
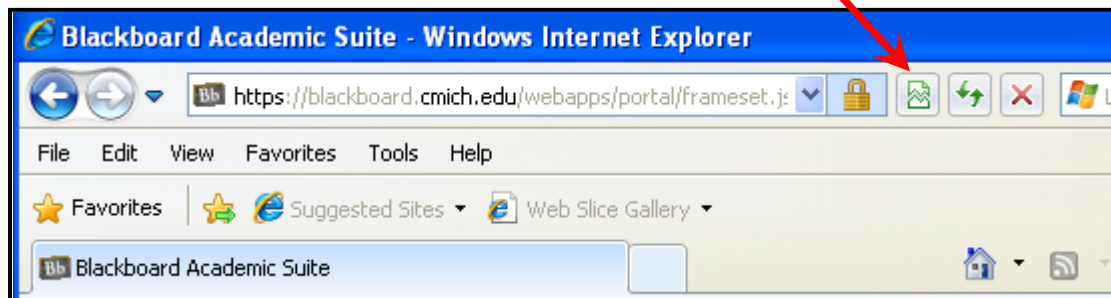


There are currently many known compatibility problems with Internet Explorer 8 and Blackboard. At this time, Internet Explorer 8 offers a “compatibility view” that may correct some of these issues.

### Enabling compatibility view case-by-case

1. Open the Web page you are trying to view.
2. Click on the broken page icon  typically located to the right of the address bar.

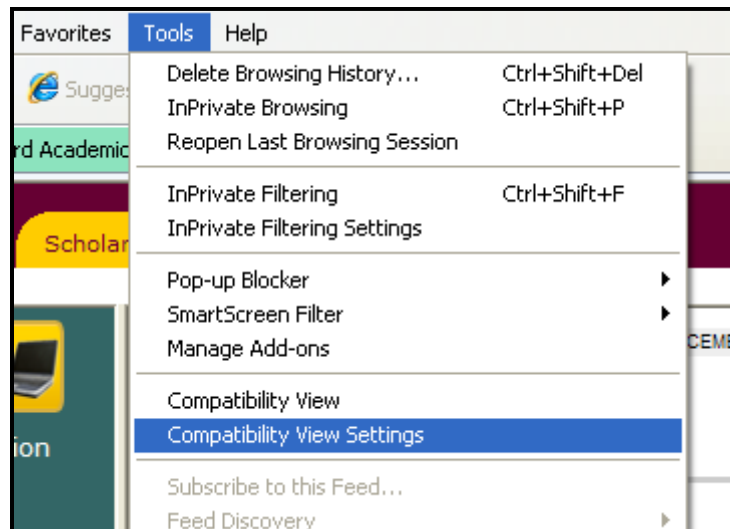
**Note:** Clicking this button will refresh the page. It is important not to do this on a page that may be sensitive to the refresh feature.



### Adding a permanent exception

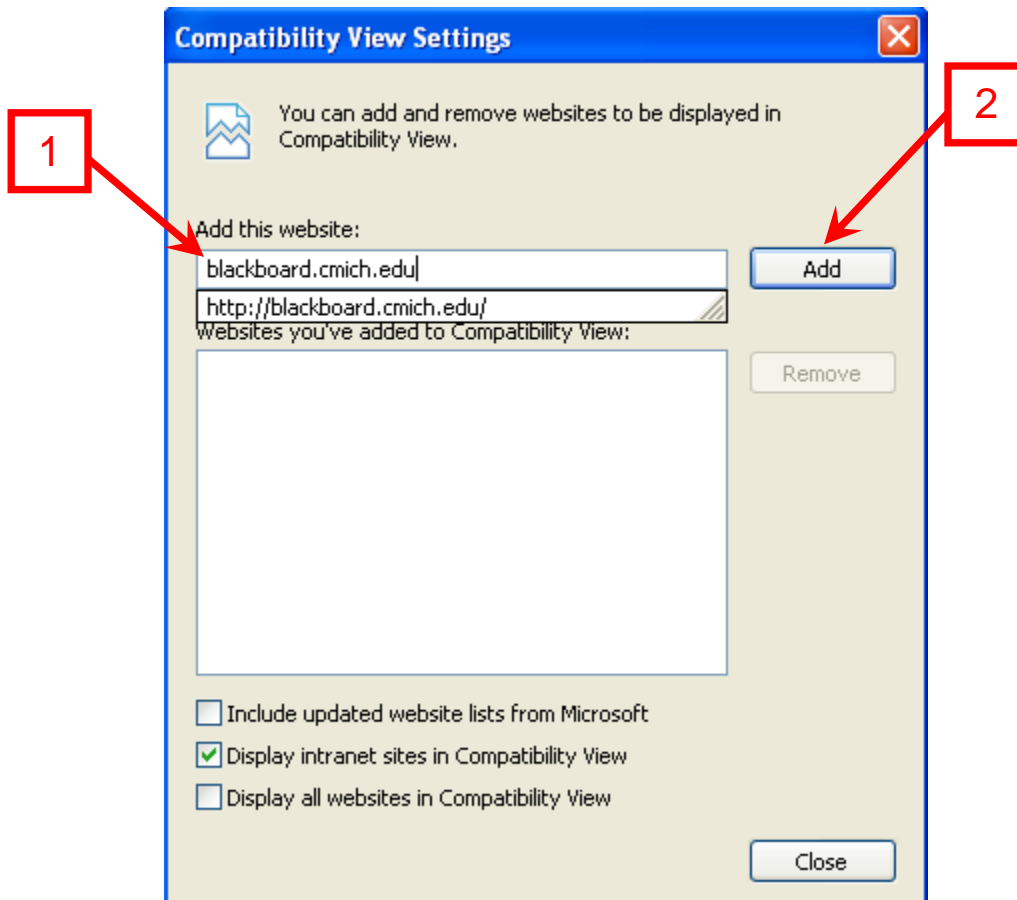
Internet Explorer 8 offers the functionality to add specified web pages to a list of permanent exceptions, meaning that the page would open in compatibility view automatically upon visiting the page.

1. Click on the **Tools** menu in Internet Explorer.
2. Click **Compatibility View Settings**.



3. Add an address into the **Add this website** field

4. Click **Add**



5. Click **Close**

**Note:** The use of Internet Explorer 8 with Blackboard is currently discouraged. The use of this compatibility view might not solve every compatibility issue and only serves as a temporary workaround.