

# ALADDIN Readi Cut HOMES

"Sold By The Golden Rule"

We Pay the Freight and Guarantee Safe Arrival of All Materials

The ALADDIN COMPANY through this catalog offers you an opportunity to buy a complete home direct from the manufacturers, saving four profits on the lumber, millwork, hardware and labor



The Sunbeam :: A Prize Winner :: 4 Plans :: \$498 And We Pay The Freight

A PRIZE WINNER designed to gladden the hearts of those who are looking for a small compact house of up-to-date appearance. It is astonishing to find so complete a home in such small compass and with so many conveniences at so low a price. The Sunbeam is made in four floor plan arrangements. They are all priced alike. The hood over front door is included.

Sunbeam No. 1



Sunbeam No. 2



Sunbeam No. 3



Sunbeam No. 4



The price in single construction, specifications for which are given below, is \$498. The price in double construction is \$585 and the specifications are the same as below except that the following materials are added: Sub-floor sheathing under finished floor with building paper between two floors, outside wall sheathing under bevel siding with building paper between, sash weights, cord, pulleys and locks for all double sliding windows and additional nails for this extra material.

### Specifications. The Sunbeam

SUNBEAM (Single Construction.) Size 22x20. 6x6-inch built-up sill, 2x6-inch joists on 16-inch centers. Clear 2 1/4-inch face tongued and grooved flooring. 2x4-inch wall and partition studding on 16-inch centers. Lath for lining all walls and ceilings. Clear A redwood bevel siding for outside walls. Clear outside finish. 2x4-inch ceiling joists on 16-inch centers. 2x4 rafters on 24-inch centers. Roof sheathing laid tight. Best quality green slate surfaced roofing. Check rail windows and frames, size of glass in each sash 26x24 inches. Kitchen, 26x16-inch glass in each sash. Bath room has swinging casement, size of glass 18x24 inches. Clear interior trim. Clear 6-inch two member baseboard. Door frames and doors, size 2 feet 8 inches by 6 feet 8 inches, highest quality fit. Front and rear doors upper half glazed. Glass openings furnished where shown in plans. Cellar stairs furnished when shown in plans. Two coats of paint for exterior. Stain and varnish for interior trim and doors. All nails, mortised locksets, hinges, double acting floor hinges and spring window bolts to complete house. Height of ceiling, 8 feet. Roof 1/4 pitch. Exposed eaves 1 foot projection. Plans reversed without charge, see page 23.

**The Columbia :: A Real Gem :: 9 Plans :: Price \$487** *And We Pay The Freight*



**T**HIS pretty cottage offers a chance to start home ownership on the very smallest of savings. Later successes may come, enabling a larger and more expensive home. But the Columbia is the starting point, conserving expenses, inspiring thrift, and saving rent.

You may choose any one of the nine floor plans shown. They are all priced alike—\$487 and we pay the freight. The Columbia is size 18x26 feet. Strong 6x6 built-up sill supports clean straight 2x6 No. 1 floor joists on 16-inch centers. Studding and ceiling joists are of splendid No. 1 2x4 stock and on 16-inch centers. Rafters of same stock on 24-inch centers. Finest grade close grained, clear tongued and grooved flooring with 2 1/4 inch face, supplied for every house. Beautiful Clear A—Redwood bevel siding offers indestructible protection to the home, while the exposed finish lumber such as corner boards, porch work, window and door casings are free from any defects such as knots, etc. No. 1 air-dried lath are supplied for all walls and ceilings. Sound roof sheathing is to be laid tight. Roof is covered with best grade green slate surfaced roofing. Double sliding sash windows with clear glass, size 26x24, glazed ready to hang for all rooms except bathroom, where swinging casement glass size 18x24 is furnished. Interior woodwork is made of clear, beautiful grained stock, while all inside doors are of handsome two-panel design, size 2 feet 8 inches by 6 feet 8 inches. Glass in upper half of

*(Continued on next page)*

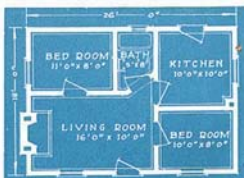


The porch shown in the above picture of the Columbia will be furnished for \$55. It is 14x6 feet in size and the price includes all materials.

**Columbia No. 1**



**Columbia No. 2**



**Columbia No. 9**



The Savings After Building a Small Home will add more to your Happiness than the luxuries of a big home—All Columbia's \$487



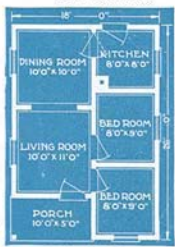
The porch size 14x6 feet shown in the picture above may be had for \$47. The price includes a pair of 4-foot wide steps.

Picture of the Columbia with inset porch, as shown in floor plans number 3 and 8. No additional charge for inset porch.

front and rear doors. Clear 6-inch two-member base boards. Cellar stairs furnished when shown in plans. Highest grade paint manufactured is supplied for two coats for outside while stain and varnish is furnished for the interior trim and doors. This quality insures perfect protection to materials and most attractive finish. Mortised locksets with brushed brass escutcheons in attractive designs come for each door in the house, except dining room door which is furnished with double acting floor hinge. Spring window bolts for all windows together with all nails necessary for constructing house are included. The height of ceilings is eight feet and the roof has one quarter pitch. Exposed eaves are of one foot projection. The foregoing is an accurate description of the Columbia as furnished for \$487 in Single Construction. Double Construction is identical except that following materials are added: Outside wall sheathing under bevel siding with building paper between; sub-floor sheathing under finish floor with building paper between two floors. Sash weights, sash pulleys, and sash locks for all double sliding windows and additional nails for the above materials. Price of any Columbia in Double Construction is \$569. Plans reversed without charge. See page 23.

The porch and steps shown in the large picture at top of page 2 will be furnished for \$86. It is 16x6 feet in size.

Columbia No. 3



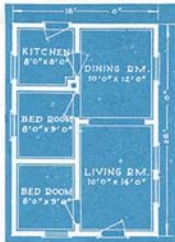
Columbia No. 4



Columbia No. 5



Columbia No. 6



Columbia No. 8



Columbia No. 10



# The Elmhurst :: 4 Ideal Arrangements :: Price \$696 *And We Pay The Freight*

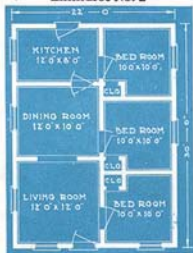


**T**HE ELMHURST is a new Aladdin design offered because of the large demand for a home 22x30 feet in size. It is presented in four excellent floor plans. Everyone who builds the Elmhurst will be more than pleased, not only with the interior arrangement, but also with the exterior appearance.

**Elmhurst No. 1**



**Elmhurst No. 2**



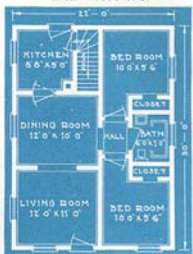
The pergola type porch is a distinctive feature. It has a tight weatherproof roof.

The price in single construction, specifications for which are given below, is \$696. The price in double construction is \$807 and the specifications are the same as for single construction except that the following materials are added: Sub-floor sheathing under finish floor with building paper to be placed between the two floors, outside wall sheathing under bevel siding with building paper to be placed between, sash weights, cord, pulleys and sash locks for all double sliding windows, additional nails for the above extra materials. Porch shown in picture may be had by adding \$90 to the price. Size of porch 14 feet by 8 feet.

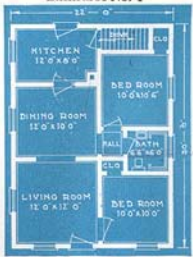
**Specifications, The Elmhurst**

ELMHURST—(Single Construction.) Size 22x30. 6x6-inch built-up sill, 2x8-inch joists on 16-inch centers. Clear 2 1/4-inch face tongued and grooved flooring. 2x4-inch wall and partition studs on 16-inch centers. Lath for lining all walls and ceilings. Clear A redwood bevel siding for outside walls. Clear outside finish. 2x4-inch ceiling joists on 16-inch centers. 2x4 rafters on 24-inch centers. Roof sheathing laid tight. Best quality green slate surfaced roofing. Check rail windows and frames, size of glass in each sash 26x24 inches. Bath room, size of glass, each sash 26x16 inches. Clear interior trim. Clear 6-inch two member baseboard. Door frames and doors, size 2 feet 8 inches by 6 feet 8 inches, highest quality fir. Front and rear doors upper half glazed. Casel openings furnished where shown in plans. Cellar stairs furnished where shown in plans. Two coats of paint for exterior. Stain and varnish for interior trim and doors. All nails, mortised locksets, hinges, double acting floor hinges and spring window bolts to complete house. Height of ceiling 8 feet. Roof 3/4 pitch. Exposed eaves 1 foot projection. Plans reversed without charge, see page 23.

**Elmhurst No. 3**



**Elmhurst No. 4**



The Cedars :: A Real Beauty :: 5 Plans :: Price \$598 *And We Pay The Freight*



**T**HE CEDARS is a beautiful bungalow, marvelously priced and remarkably designed. The price in single construction, specifications for which are given below, is \$598 which includes outside walls furnished with siding instead of shingles. Shingles will be furnished for walls, if desired, without extra cost when double construction is ordered.

The price of the Cedars in double construction is \$715 and the specifications are the same as for single construction except that the following materials are added: Sub-floor sheathing under finish floor with building paper to be placed between the two floors, outside wall sheathing under level siding or shingles with building paper to be placed between, sash weights, cord, pulleys and sash locks for all double sliding windows, additional nails for the above extra materials. Porch shown in picture may be had by adding \$99 to the price. Size of porch 16 feet by 8 feet.

**Cedars Plan No. 1**



**Specifications, The Cedars**

**CEDARS**—(Single Construction.) Size 22x26. 6-6-inch bolt-up sill, 2x4-inch joists on 16-inch centers. Clear 2 1/4-inch face tongued and grooved flooring. 2x4-inch wall and partition studs on 16-inch centers. Lath for lining all walls and ceilings. Clear A redwood level siding for outside walls. Clear outside finish. 2x4-inch ceiling joists on 16-inch centers, 2x4 rafters on 24-inch centers. Roof sheathing laid tight. Best quality green slate surface roofing. Check rail windows and frames, size of glass in each sash 20x24 inches. Bath room has swinging cabinet, size of glass 18x24 inches. Clear interior trim. Clear 6-inch two member baseboard. Door frames and doors, size 2 feet 8 inches by 6 feet 5 inches, highest quality fit. Front and rear doors upper half glass. Casement openings furnished where shown in plans. Two coats of paint for exterior. Stain and varnish for interior trim and doors. All nails, mortised locks, hinges, double acting floor hinges and spring window bolts in complete house. Height of ceiling 8 feet. Roof 1/4 pitch. Kerosene stove 1 foot penetration. Plans reversed without charge, see page 23.

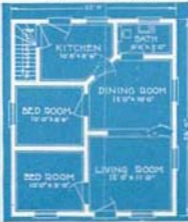
**Cedars Plan No. 3**



**Cedars Plan No. 4**



**Cedars Plan No. 5**



**Cedars Plan No. 6**

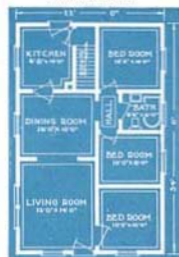


# The Bluebird :: A Home of Dream-Like Perfection :: Price \$765 *And We Pay The Freight*



**T**HE BLUEBIRD is a home of beautiful proportions, interesting detail and excellent interior arrangements. To own it insures the fullest satisfaction in everything that goes to make a real home. It will measure up to your highest expectations, from the strength of its sturdy timbers to the charm and beauty of woodwork and finish. Four floor plan arrangements are shown here. They are all priced alike. The price in single construction, specifications for which are shown at the bottom of the page, is \$765. The price in double construction is \$869 and the specifications are the same as below except that the following materials are added: Sub-floor sheathing under finished floor with building paper between two floors, outside wall sheathing under bevel siding with building paper between, sash weights, corl, pulleys and locks for all double sliding windows and additional nails for this extra material. Porch size 16x8 feet shown in picture may be had by adding \$99 to above prices.

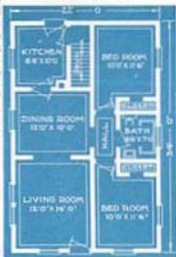
**Bluebird No. 1**



**Bluebird No. 2**



**Bluebird No. 4**



**Bluebird No. 5**



## Specifications, The Bluebird

**BLUE BIRD**—(Single Construction). Size 22x24, 6x6-inch built-up sill. 2x8-inch joists on 16-inch centers. Clear 2 1/2 inch face tongued and grooved flooring. 2x4-inch wall and partition studding on 16-inch centers. Lath for lining all walls and ceilings. Clear A redwood bevel siding for outside walls. Clear outside finish. 2x4-inch ceiling joists on 16-inch centers. 2x4 rafters on 24-inch centers. Roof sheathing laid over. Best quality green slate-surfaced roofing. Check rail windows and frames, size of glass in each sash 26x24 inches. Bath room and kitchen, size of glass, in each sash 26x16 inches. Clear interior trim. Clear 6-inch two member base-board. Door frames and doors, size 2 feet 8 inches by 6 feet 8 inches, highest quality fir. Front and rear doors upper half glazed. Casel openings furnished where shown in plans. Cellar stairs furnished when shown in plans. Two coats of paint for exterior. Stain and varnish for interior trim and doors. All nails, mortised locksets, hinges, double acting floor hinges, and spring window bolts to complete house. Height of ceiling 8 feet. Roof 1/2 pitch. Exposed eaves 1 foot projection. Plans reversed without charge. See page 23.

**Remember Aladdin pays the freight and guarantees the quantity and quality of all materials and their safe arrival at destination.**

# The Linden ::

MADE IN 3 SIZES  
PRICE OF SIZE 24' x 30'

**\$745** And We Pay  
The Freight



**T**HE LINDEN is a new design that is sure of a place among our best sellers. The photograph above illustrates the charm and home appeal of the exterior and an examination of the three floor plans will convince you of the ideal room arrangements we have obtained for this new Aladdin. From the three sizes shown you will be sure to find one that exactly meets your ideas of a comfortable, convenient, sturdy home.

The Linden No. 1 size, 24x30 feet, is **\$745** in single construction and **\$847** in double construction. The Linden No. 2 size 24x32 feet is **\$781** in single construction and **\$895** in double construction. The Linden No. 3 size 24x34 feet is **\$819** in single construction and **\$940** in double construction.

See specifications for single and double construction below. Porch as shown, size 12x8 feet, will be furnished with the Linden for **\$89** additional or one of the other porches shown in this catalog may be selected for your home at the prices quoted for the various porches.

## Specifications, The Linden, No. 1, 2 & 3

**Single Construction:** 6x6-inch built-up sill, 2x8-inch joists on 16-inch centers. Clear 2 1/4-inch face tongued and grooved flooring. 2x4-inch wall and partition studs on 16-inch centers. Lath for lining all walls and ceilings. Clear A redwood bevel siding for outside walls. Clear outside finish. 2x4-inch ceiling joists on 16-inch centers. 2x4 rafters on 24-inch centers. Roof sheathing laid tight. Best quality green slate-surfaced roofing. Check rail windows and frames, size of glass in each sash 26x24 inches. Bath room and kitchen, size of glass, in each sash 26x16 inches. Clear interior trim. Clear 6-inch two member base-board. Door frames and doors size 2 feet 8 inches by 6 feet 8 inches, highest quality fir. Front and rear doors upper half glazed. Cased openings furnished where shown in plans. Cellar

stairs furnished when shown in plans. Two coats of paint for exterior. Stain and varnish for interior trim and doors. All nails, mortised locksets, hinges, double acting floor hinges, and spring window bolts to complete house. Height of ceiling 8 feet. Roof 1/2 pitch. Exposed eaves 1 foot projection.

**Double Construction** takes the same specifications as single construction with the following additions: Sub-floor sheathing under finished floor with building paper to be placed between the two floors, outside wall sheathing under bevel siding with building paper to be placed between, sash weights, cord, pulleys and sash locks for all double sliding windows and additional nails for the above extra materials. Plans reversed without charge. See page 21.

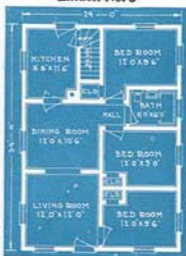
Linden No. 1



Linden No. 2



Linden No. 3



The Victory :: Astonishingly Priced :: Only \$898 *And We Pay The Freight*



**W**HEN over twenty years time and thought are devoted to one subject, surely you can know that the experience gained is of great value. For over twenty years the Aladdin Company has devoted all its energy toward perfecting ready cut homes. Perfection in a home means much.

It means, among other things, that the materials of which the home is constructed must be of the very highest quality. It means that the construction used in the building of the home must give strength, sturdiness, and the ability to withstand the wear of time. It means that the roof must be weather proof, and the paints used must be of the highest quality to give not only a well appearing home but perfect protection from the action of the weather in all seasons of the year. The completed home must be well insulated. It should be easy to heat in winter and easy to keep cool in summer. It means that the inside and outside doors must be so carefully located that they will be of convenient access in going from one room to another. These locations must also be studied to permit satisfactory arrangement of furniture and furnishings.

The location of windows is a problem in itself. Not only must the position of large pieces of furniture of common use in all homes be considered, but the number of windows to insure perfect ventilation cannot be lost sight of. Windows must be properly placed to present the best appearance within a room and also to give a balanced appearance from the exterior of the house. It has been the ambition of Aladdin to provide all these points of perfection in a home and at the same time sell that home at a lower price than it could be purchased for from any other source.

Six arrangements of the Victory, all with the same outside dimensions, offer an opportunity to pick exactly the floor plan your needs demand.

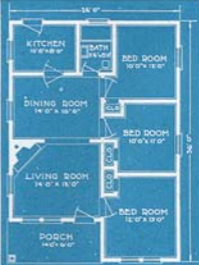
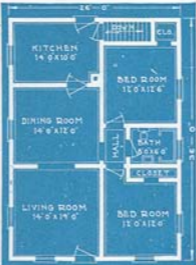
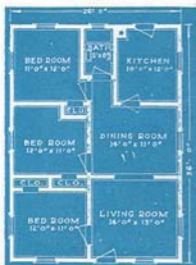


A Cozy Aladdin Interior

Victory Plan A

Victory Plan S

Victory Plan W





The price of the Victory in single construction is \$898 as described in specifications below. Price of Victory in double construction is \$1024 and specifications are same as below except that following materials are added: Sub-floor sheathing under finished floor with building paper to be placed between the two floors; outside wall sheathing under bevel siding with building paper to be placed between; sash weights, cords, pulleys and sash locks for all double sliding windows; additional nails for above extra materials.

The porch shown in the large illustration of the Victory is 22x8 feet in size and will be furnished at \$140. It may be that you will desire the 24x8-foot porch shown at the top of this page or one of the smaller porches shown in this catalog. Our object in pricing the porches separate is so you can have the porch of your choice or order without porch is you so desire.

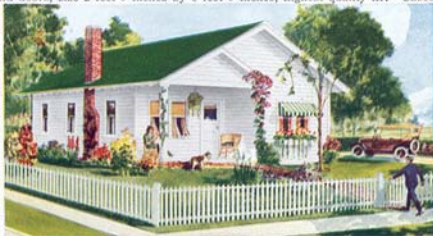
**Specifications, The Victory:** (Single Construction.) Size 26x36, 6x6-inch built-up sill, 2x8-inch joists on 16-inch centers. Clear 2 3/4-inch face tongued and grooved flooring. 2x4-inch wall and partition studding on 16-inch centers. Lath for lining all walls and ceilings. Clear A redwood bevel siding for outside walls. Clear outside finish. 2x4-inch ceiling joists on 16-inch centers. 2x6-inch rafters on 24-inch centers. Roof sheathing laid tight. Best quality green slate-surfaced roofing. Check rail windows and frames, size of glass in each sash 26x24 inches, sash glazed ready to hang. All Bathrooms also Kitchens in plans X, Y and Z supplied with check rail windows, size of glass in each sash, 26x16 inches. Clear interior trim. Clear 6-inch two-member baseboard of attractive design. Door frames and doors, size 2 feet 8 inches by 6 feet 8 inches, highest quality fir. Cased openings furnished where shown in plans.

Front and rear doors glazed upper half. Cellular stairs furnished when shown in plans. Two coats of paint for exterior. Stain and varnish for interior trim and doors. All nails, mortised locksets, hinges, double acting floor hinges and spring window bolts to complete house. Height of ceiling 8 feet. Roof 3/4 pitch. Exposed eaves 1 foot projection. Plans reversed without extra charge, see page 23.



Picture of Victory Showing Big Porch

The front porch shown in illustration above is size 24x8 feet and will be furnished at an extra cost of \$145. The photo above gives a splendid idea of the appearance of the Victory with this attractive porch.

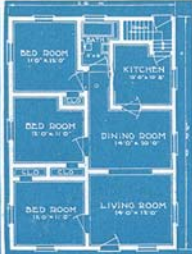


Picture of Victory Plan W With Inset Porch

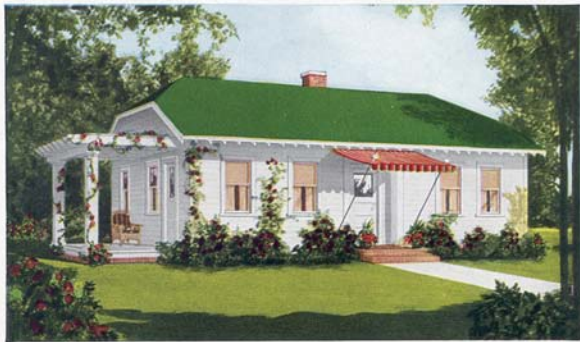
Victory Plan X

Victory Plan Y

Victory Plan Z



# The Potomac::A Quaint Colonial Bungalow::Price \$919 And We Pay The Freight

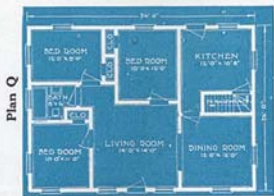
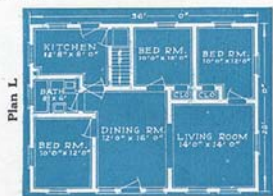
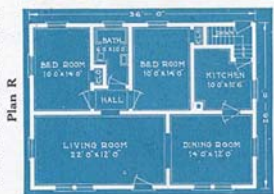
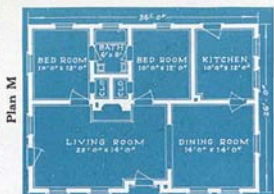


**T**HE POTOMAC is a master design. Colonial atmosphere is ever appealing to the home owner for it bespeaks hospitality, generosity, old-fashioned simplicity and true goodness. The snubbed gable ends lend a quaint touch making the Potomac a home of distinction.

The price of the Potomac in single construction is \$919 as described in specifications below. The price in double construction is \$1043 with specifications the same as above except that the following materials are added: Sub-floor sheathing below finish floor with building paper between; outside wall sheathing under bevel siding with building paper between; sash weights, cords and sash locks, for all double sliding windows and extra nails for this additional material. Pergola type porch comes extra at \$69—size 8x14 feet. This porch has matched ceiling roof covered with sheet tin. We can also furnish the same style porch in size 8x20 feet with three columns at \$102.

### Specifications, The Potomac

(Single Construction.) Size 36 by 26 feet. 6x6-inch built-up sill. 2x8-inch floor joists on 16-inch centers. Clear 2½-inch face tongued and grooved flooring. 2x4-inch wall and partition studding on 16-inch centers. Lath for lining all walls and ceilings. Clear A redwood bevel siding for outside walls. Clear outside finish. 2x4-inch ceiling joists on 16-inch centers. 2x6-inch rafters on 24-inch centers. Roof sheathing laid tight. Best quality green slate surfaced roofing. Check rail windows and frames, size of glass in each sash 26x24 inches, sash glazed ready to hang. Kitchen and bath room supplied with check rail window, size of glass in each sash 26x16 inches. Clear interior trim. Clear 6-inch two member baseboard of attractive design. Door frames and doors size 2 feet 8 inches by 6 feet 8 inches, highest quality fir. Casement openings furnished where shown in plans. Front and rear doors glazed upper half. Cellar stairs furnished when shown in plans. Two coats of paint for exterior. Stain and varnish for interior trim and doors. All nails, mortised locksets, hinges, double acting floor hinges and spring window bolts to complete house. Height of ceiling 8 feet. Roof ¼ pitch. Exposed eaves 1 foot projection. Plans reversed without charge, see page 23.



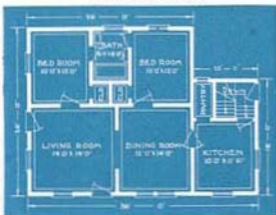
# The Coral Gables :: A New Aladdin :: Price \$815 And We Pay The Freight



**R**EFINEMENT of detail and the true simplicity of Colonial architecture distinguish this beautiful bungalow. As a home it satisfies every wish in beauty, character, comfort, convenience, and remarkable value. Three floor plans are shown, each different in size, arrangement and price. Any one of these plans can be placed, either the narrow way of your lot or the long way. One of the outside doors opening into the living room can be replaced by a window if desired at no extra cost.

The price in single construction, as described in specifications below, is \$815 for Plan No. 1, \$887 for Plan No. 2, and \$914 for Plan No. 3. The price in double construction is \$933 for Plan No. 1, \$998 for Plan No. 2, and \$1034 for Plan No. 3, with specifications the same as below, except that the following materials are added: Sub-floor sheathing below finish floor with building paper between; outside wall sheathing under bevel siding with building paper between, sash weights, cords and sash locks, for all double sliding windows and extra nails for this additional material. Porch size 12x8 feet will be furnished by your adding \$75 to the price. Remember we pay the freight.

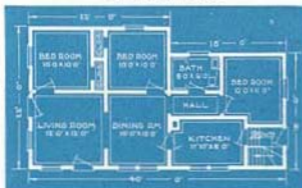
**Coral Gables No. 3**



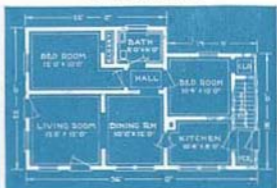
## Specifications, Coral Gables

(Single Construction) 6x6-inch built-up sill, 2x8-inch joists on 16-inch centers. Clear 2 1/2-inch face tongued and grooved flooring. 2x4-inch wall and partition studding on 16-inch centers. Lath for living all walls and ceilings. Clear A redwood bevel siding for outside walls. Clear outside finish. 2x4-inch ceiling joists on 16-inch centers. 2x4 rafters on 24-inch centers furnished for Nos. 1 and 2, 2x6 rafters on 24-inch centers for No. 3. Roof sheathing laid tight. Best quality green slate surfaced roofing. Check rail windows and frames, size of glass in each sash 26x24 inches. Kitchen and bathroom supplied with check rail windows, size of glass in each sash 26x16 inches. Clear interior trim. Clear 6-inch two member baseboard. Door frames and doors size 2 feet 8 inches by 6 feet 8 inches, highest quality fir. All outside doors upper half glazed. Cellar stairs furnished. Casement openings furnished where shown in plans. Two coats of paint for exterior. Stain and varnish for interior trim and doors. All nails, mortised locksets, hinges, double acting floor hinges and spring window bolts to complete house. Height of ceiling 8 feet. Roof 1/4 pitch. Exposed eaves 1 foot projection. Plans reversed without charge. See page 2A.

**Coral Gables No. 2**



**Coral Gables No. 1**





**A** STRONG, substantial, dignified and complete American home! Thus might be described, in one sentence, the splendid Liberty. To avoid the wasting of a single penny, is a duty we all owe to our families and ourselves. To accomplish this object in the building of a home is the most laudable of all ambitions. Aladdin designers set about the task of creating a structure in which there would not be wasted one foot of material—one inch of space.

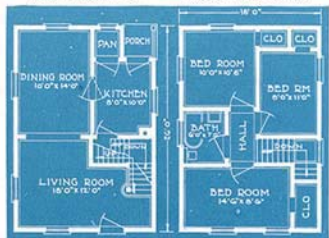
Clean square lines, well proportioned walls and roof, regular placement of windows, blend into perfect harmony. Two interior arrangements are offered at the same price, one having two bedrooms and one with three bedrooms. The Liberty is priced at \$959 for single construction, specifications for which are shown at bottom of page, and the price for double construction is \$1092. Double construction specifications are the same as for single construction except that the following materials are added: Sub-floor sheathing under finished floors with building paper to be placed between the two floors, outside wall sheathing under bevel siding with building paper to be placed between, sash weights, cord, pulleys and sash locks for all double sliding windows, and additional nails for the above extra materials. Porch size 16x8-foot will be furnished by your adding \$112 to the price.

#### Specifications, The Liberty

(Single Construction.) 6x6-inch built-up sill. 2x8-inch joists on 16-inch centers first and second floors. Clear 2 1/4-inch face, tongued and grooved flooring. 2x4-inch wall and partition studding on 16-inch centers. Lath for lining all walls and ceilings. Clear A redwood siding for outside walls. Clear outside finish. 2x4-inch ceiling joists on 16-inch centers. 2x4-inch rafters on 24-inch centers. Hip rafters 2x6 inches. Roof sheathing laid tight. Best quality green slate surfaced roofing. Check rail windows and frames, size of glass in each sash 26x28 inches 1st floor, 26x24 inches 2nd floor. Sash glazed ready to hang. Bathroom glass each sash 26x16 inches. Clear interior trim. Clear 6-inch two member baseboard. Door frames and doors, size 2 feet 8 inches by 6 feet 8 inches, highest quality fir. Front and rear doors upper half glazed. Cased openings where shown in plans. Attractive circle tread main stairs. Cellar stairs under main stairs. Two coats of paint for exterior. Stain and varnish for interior trim and doors. All nails, mortised locksets, hinges, double acting floor hinges and spring window bolts to complete house. Size of house 18x26 feet. Height of ceilings 9 feet 1st floor—8 ft. 2nd floor. Hip roof 1/2 pitch. Exposed eaves 1-foot 6-inch projection. Plans reversed without charge. See page 23.

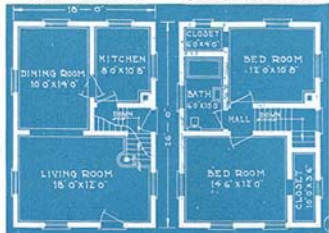
First Floor Plan J

Second Floor Plan J



First Floor Plan N

Second Floor Plan N



# The Welland :: Ideal 8 Room Home :: Price \$1098 *And We Pay The Freight*



**W**E WERE inspired to develop the Welland because of the great popularity of this type on Long Island and the evident satisfaction it has given to all owners in this suburban community adjoining New York City and elsewhere. The utility of a two-story type with the beauty of the story and a half is accomplished, while holding the apparent height of the house down, through splendid handling of eaves and roof lines. If you will study the interior plans carefully you will enthusiastically approve our statement that there was never a more harmonious arrangement or a more complete attainment of convenience than is accomplished here. A large and well proportioned living room with semi-open stairs, an attractive dining room, an efficiently planned kitchen with grade cellar entrance and nook for ice box complete the first floor. On the second floor are found three light airy bedrooms, each with closet and a large bathroom. And the Welland can be built on a lot of thirty feet frontage, or less.

The Welland is priced at **\$1098** for single construction, specifications for which are shown at bottom of page, and the price for double construction is **\$1285**. Double construction specifications are the same as for single construction except that the following materials are added: Sub-floor sheathing under finished floors with building paper to be placed between the two floors, outside wall sheathing under bevel siding with building paper to be placed between, sash weights, cord pulleys and sash locks for all double sliding windows, and additional nails for the above extra materials. Porch size 12x8 foot will be furnished by your adding **\$75** to the price.

## Specifications, The Welland

(Single Construction). Size 22x26. 6x6 built up sill; 2x4-inch joists on 16-inch centers 1st and 2nd floors. Clear 2x4-inch face tongue and grooved flooring. 2x4-inch wall

and partition studding on 16-inch centers. Lath for lining all walls and ceilings. Clear A redwood bevel siding for outside finish, 2x4-inch ceiling joists.

2x6-inch rafters on 24-inch centers.

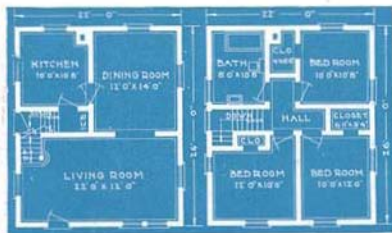
Roof sheathing laid tight. Best quality green slate surfaced roofing.

Check rail windows and frames, size of glass in each sash 26x28 inches

1st floor, 26x24 2nd floor. Sash glazed ready to hang. Kitchen and bathroom supplied with check rail window, size of glass in each sash 26x16 inches. Swinging casement window in left wall front bedroom, size glass 18x24 inches. Clear interior trim. Clear 6-inch two member baseboard. Door frames and doors, size 2 feet 8 inches by 6 feet 8 inches, highest quality fir. Front and grade doors upper half glazed. Casement openings furnished where shown in plans. Attractive circle tread stairs as shown on plans. Grade entrance cellar stairs under main stairs. Two coats of paint for exterior. Stain and varnish for interior trim and doors. All nails, mortised locksets, hinges, double acting floor hinges and spring window bolts to complete house. Height of ceiling 9 feet 1st floor—8 feet 2nd floor, sloping to 6 foot 6 inches at front and rear walls. Roof 5/12 pitch. Exposed eaves 1 foot projection. Plans reversed without charge. See page 24.

First Floor Plan

Second Floor Plan



# The Adams :: A Typical American Home :: Price \$1089 And We Pay The Freight



**T**HE ADAMS is an American home of chaste simplicity. Straight architectural lines create a pleasing and substantial style of home, which fulfills the ideals of those home builders who would rather invest their money in conveniences than embellishments. A spacious living room with semi-open stairway, well proportioned dining room and model kitchen with grade cellar entrance, complete the first story. The second story has three excellent bedrooms, four closets and bath. We show an optional second story which incorporates four bedrooms; either may be had at the same price. The price in single construction is \$1089 as per specifications below. The price in double construction is \$1255, with specifications same as below except the following materials are added: Sub-floor sheathing under finished floors with building paper to be placed between two floors, outside wall sheathing under bevel siding with building paper to be placed between, sash weights, cord, pulleys and sash locks for all double sliding windows and additional nails for the above extra materials. The porch size 20x8 will be shipped if you will add \$129 to price.

## Specifications, The Adams

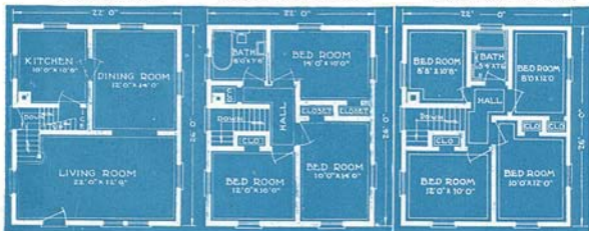
(Single Construction.) Size 22x26. 6x6 built-up sill; 2x8-inch joists on 16-inch centers 1st and 2nd floors. Clear 2 1/4-inch face tongued and grooved flooring. 2x4-inch wall and partition studding on 16-inch centers. Lath for lining all walls and ceilings. Clear A redwood bevel siding for outside walls. Clear outside finish. 2x4-inch ceiling joists on 16-inch centers. 2x4-inch rafters on 24-inch centers. Roof sheathing laid tight. Best quality green slate surfaced roofing. Check rail windows and frames, size of glass in each sash 26x28 inches 1st floor, 26x24 2nd floor. Sash glazed ready to hang. Kitchen and bathroom supplied with check rail window, size of glass in each sash 26x16 inches. Clear

interior trim. Clear 6-inch two member baseboard. Door frames and doors, size 2 feet 8 inches by 6 feet 8 inches, highest quality fir. Front and grade doors upper half glazed. Cased openings furnished where shown in plans. Attractive circle tread stairs as shown on plans. Grade entrance cellar stairs under main stairs. Two coats of paint for exterior. Stain and varnish for interior trim and doors. All nails, mortised locksets, hinges, double acting floor hinges and spring window bolts to complete house. Height of ceiling 9 feet 1st floor—8 feet 2nd floor. Roof 1/4 pitch. Exposed eaves 1 foot projection. Plans reversed without charge see page 24.

First Floor Plan

Second Floor Plan No. 1

Second Floor Plan No. 2





**T**HE PILGRIM is an interesting adaptation of Dutch architecture to the American Colonial type. This style has come to be the most popular for modest two story homes all over the country. Perfect harmony is manifest in the Pilgrim. While the impression is of a story and a half house, all ceilings both first and second floors are square with full height side walls. Study the interior. A 14x22-foot living room, 12x12-foot dining room, 12x10-foot kitchen, a coat closet and grade cellar entrance complete the first floor. The second floor has three bedrooms, hall, three closets, linen closet and bath. The price of the Pilgrim in single construction, specifications for which are shown below, is \$1148. The price in double construction is \$1308 and specifications are the same as for single construction except that the following materials are added: Sub-floor sheathing under finished floors, with building paper between the two floors. Outside wall sheathing under bevel siding with building paper between, sash weights, cord, pulleys and sash locks for the double sliding windows and additional nails for the extra materials. Pergola porch shown in the picture is roofed, giving protection and may be had at \$69 additional. Size of porch 8 feet by 14 feet.

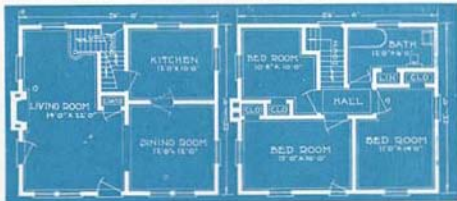
#### Specifications, The Pilgrim

(Single Construction.) Size 22x26. 6x6 built-up sill; 2x8-inch joists on 16-inch centers 1st and 2nd floors. Clear 2 1/2-inch face tongued and grooved flooring. 2x4-inch wall and partition studing on 16-inch centers. Lath for lining all walls and ceilings. Clear A redwood bevel siding for outside walls. Clear outside finish. 2x4-inch ceiling joists on 16-inch centers. 2x4-inch rafters on 24-inch centers. Roof slanting laid tight. Best quality green slate surfaced roofing. Check rail windows and frames size of glass in each sash 26x28 inches 1st floor, 26x24 2nd floor. Sash glazed ready to hang. Kitchen and bath room supplied with check rail window, size of glass in each sash 26x28

inches. Clear interior trim. Clear 6-inch two member baseboard. Door frames and doors, size 2 feet 8 inches by 6 feet 8 inches, highest quality fit. Front and rear doors upper half glazed. Cased openings furnished where shown in plans. Attractive circle tread stairs as shown on plans. Grade entrance cellar stairs under main stairs. Two coats of paint for exterior. Stain and varnish for interior trim and doors. All nails, mortised locksets, hinges, double acting floor hinges and spring window bolts to complete house. Height of ceiling 9 feet 1st floor—8 feet 2nd floor. Roof 1/4 pitch. Bevel eaves 1 foot projection. Plans reversed without charge, see page 25.

First Floor Plan

Second Floor Plan



You take absolutely no chance in dealing with The Aladdin Company. Our guarantee not only covers the quality and quantity of materials but also their safe arrival at your station.



**T**HE entrance hall with semi-open stairway and cloak closet demand your admiration the minute you enter the Capitol. Arches lead to the right and left into living room and dining room. Think of the possibilities of a living room 26 feet deep and 14 feet wide! Leading from this interesting room is a library or den. On the other side of the house is found pantry separating dining room and kitchen, with cellar entrance under the main stairway. There are six rooms on the second floor—and closets. The Capitol is priced in single construction at \$1695. The price in double construction is \$1929 and the specifications are the same as for single construction except that the following materials are added: Sub-floor sheathing under finish floors with building paper between; outside wall sheathing under bevel siding with building paper between and extra nails for all additional materials. Pergola porch, with covered roof, size 8x14 feet, will be furnished by your adding \$69 to the price. If you want the 10x14-foot Porte Cochere shown on right side of house add \$58 to price.

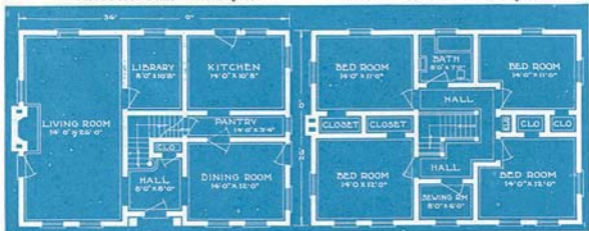
#### Specifications, The Capitol

(Single Construction.) Size 36x26. 6x8-inch built-up sills. 2x8-inch joists on 16-inch centers 1st and 2nd floors. Clear 2½-inch face tongued and grooved flooring. 2x4-inch wall and partition studding on 16-inch centers. Lath for lining all walls and ceilings. Clear A redwood bevel siding for outside walls. Clear outside finish, 2x4-inch ceiling joists on 16-inch centers. 2x6-inch rafters on 24-inch centers. Roof sheathing laid tight. Best quality green slate surfaced roofing. Check rail windows and frames, size of glass in each sash 26x28 inches, 1st floor; 26x24 inches, 2nd floor. Sash glazed ready to hang. Bath room and kitchen supplied with check-rail window, size of glass in each sash, 26x16 inches. Clear interior trim. Clear 6x8-inch two member

baseboard. Door frame and doors, size 2 feet 8 inches by 6 feet 8 inches, high quality fir. Front, rear, and side doors upper half glazed. Attractive circle tread stairs as shown on plan. Cellar stairs under main stairs. Cased openings furnished where shown in plans. Two coats of paint for exterior. Stain and varnish for interior trim and doors. All nails, mortised locksets, hinges and double acting floor hinges, sash weights, sash cord, sash pulleys and sash locks to complete house. Height of ceilings 9 feet 1st floor, 8 feet 2nd floor. Ceilings on 2nd floor are full height not sloped. Roof ¼ pitch. Boxed eaves 1 foot projection. Plans reversed without charge. See page 23.

First Floor Plan—The Capitol

Second Floor Plan—The Capitol







**T**HE MARIGOLD offers a story and a half home that can be built at the very lowest cost. The price quoted above provides you with the home with the first floor finished in the same way as all our other houses are furnished. The second floor is unfinished except for the floor. The Marigold can be furnished in either of the two first floor plans shown below. Regardless of which plan you select it is possible for you to arrange for two extra bedrooms on the second floor. Our suggestion of a convenient and practical arrangement is shown opposite the first floor plans. When you purchase the home if you wish us to also include materials for finishing the second floor in accordance with our suggestion, we will be glad to do so for \$93 additional. The small sketch over the plan arrangement suggested for the second floor, will inform you of the ceiling height obtainable.

The price of the Marigold in Single Construction, specifications for which are listed below, is \$789. In Double Construction the price is \$888 and the specifications are the same as in single construction except that the following materials are added: Sub-flooring for first floor only with building paper to be placed between the sub-flooring and finish flooring, outside wall sheathing under bevel siding with building paper between, sash weights, cord, pulleys and locks for all double sliding windows and additional nails for extra materials. Whether you purchase in Single Construction or Double Construction, materials with which to finish the second floor in accordance with our suggestion can be furnished for \$93 additional. Porch shown in picture may be had by adding \$120. Size of porch, 20x8 feet.

### Specifications, The Marigold

(Single Construction.) Size 22x26 feet. 6x6-inch built-up sill. 2x8-inch joists on 16-inch centers first floor, 2x6 joist on 16-inch centers second floor. Clear 2 1/4-inch face tongued and grooved flooring first and second floors. 2x4-inch wall and partition studding on 16-inch centers. Lath for lining all walls and ceilings on first floor. Clear A redwood bevel siding for outside walls. Clear outside finish. 2x4-inch rafters on 24-inch centers. Roof sheathing laid tight. Best quality green slate surfaced roofing. Check rail windows and frames, size of glass in each sash 26x24 inches, sash glazed ready to hang. Kitchen supplied with check rail window, size of glass in each sash 26x16 inches. Bath room has swinging casement window, glass size 15x24 inches. Clear interior trim. Clear 6-inch two member baseboard of attractive design. Door frames and doors, size 2 feet 8

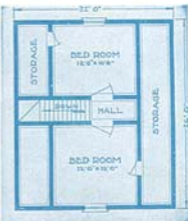
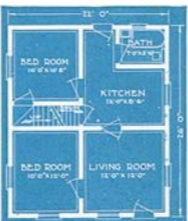
inches by 6 feet 8 inches, highest quality fir. Front and rear doors glazed upper half. Casement openings where shown in plans. Stairs to second floor and cellar furnished. Two coats of paint for exterior. Stain and varnish for interior trim and doors. All nails, mortised locksets, hinges, double acting floor hinges and spring window bolts to complete house. Height of ceiling 8 feet first floor. Roof 1/2 pitch. Exposed eaves, 1 foot projection. Plans reversed without charge. See page 23.



First Floor—Plan A

First Floor—Plan B

Suggested Second Floor Plan



The Mayflower :: **MADE IN 3 SIZES**  
**PRICE OF SIZE 18' x 18' \$382** *And We Pay The Freight*



**T**HE MAYFLOWER brings happiness to thousands of families who do not require a larger home. Also, it permits the family of modest means to get into a snug, warm and strong little home at almost unbelievable little cost. This home is being put up by many owners who have had no experience in carpenter work. Our instructions with pictures explain every step. The Mayflower is shown below in four different plan arrangements and any one of the four plans can be furnished in your choice of three different sizes. The plans are of the 18x18-foot Mayflower Homes. The house can also be furnished in a 22x22-foot size or in a 26x26-foot size. If purchased 22x22 feet in size, each room would be two feet larger each way than as shown in our 18x18-foot plans. If purchased 26x26 feet in size, each room would be four feet larger each way than as shown in our 18x18-foot plans.

The size, 18 x 18 feet, is priced at \$382 in Single Construction and at \$449 in Double Construction. The size, 22 x 22 feet, is priced at \$485 in Single Construction and at \$568 in Double Construction. The size 26 x 26 feet, is priced at \$635 in Single Construction and at \$749 in Double Construction.

The illustration of the Mayflower shows it erected with a 6x4-foot entrance hood and a 6x4-foot stoop with 4-foot wide steps. The hood can be furnished for \$13 and the stoop and steps for \$18 or any of our larger porches shown on other homes in our catalog can be purchased in preference if you desire and providing the width of the porch is not too great for the width of the Mayflower home in the size you have selected.

**Specifications, The Mayflower**

**Single Construction, Size 18 x 18 Feet**

6x6-inch built-up sill. 2x6-inch joists on 16-inch centers. Clear tongued and grooved flooring. 2x4-inch wall and partition studing on 16-inch centers. Lath for lining all walls and ceilings. Clear A redwood bevel siding for outside walls. Clear outside finish. 2x4-inch ceiling joists on 16-inch centers. 2x4-inch rafters on 24-inch centers. Roof sheathing laid tight. Best quality green slate surfaced roofing. Check-rail windows and frames, size of glass in each sash 26x24 inches, sash glazed ready to hang. Kitchen, size of glass in each sash 26x16 inches. Clear interior trim. Clear 6-inch two member baseboard. Door frames and doors, size 2 feet 8 inches by 6 feet 8 inches, highest quality fir. Front and rear doors upper half glazed. Cellular stairs furnished when shown on plans. Casement openings furnished where shown on plans. Two coats of paint for exterior. Stain and varnish for interior trim and doors. All nails, mortised

lockets, hinges, double acting dining room floor hinges and spring window bolts to complete house. Height of ceilings 8 feet. Roof 1/4 pitch. Exposed eaves 1 foot projection. **Size 22x22 feet.** The Specifications are the same for the 22-foot size except the floor joists are 2x8 inches on 16-inch centers. **Size 26x26 feet.** Specifications for the 26-foot size are the same as for the 22-foot size except rafters are 2x8 inches on 24-inch centers.

**Double Construction** takes the same specifications as single construction with the following additions: Sub-floor sheathing under finished floor with building paper to be placed between the two floors, outside wall sheathing under level siding with building paper to be placed between, sash weights, cord, pulleys and sash locks for all double sliding windows and additional nails for the above extra materials. Plans reversed without charge. See page 23.



Mayflower No. 1

Mayflower No. 3

Mayflower No. 4

Mayflower No. 5

## EXTRA FEATURES OBTAINABLE FOR ALADDIN HOUSES

For those Customers who wish to embellish their homes with a few distinctive touches, we have provided a number of features, as shown here, at but slight additional costs.

### HOMECRAFT BOOKCASE ARCH



Has been used in thousands of homes and in every case has given perfect satisfaction. The cases are 2 1/2 feet wide, the columns 8 inches square. Sent out complete with hardware and glass doors, as shown. Bookcase Arch.

3C-6.....\$66.00

### CLOSET DOORS

Closet doors are not shown, or included in our plans as a great majority request the doors omitted, but the cased openings left so they can use a curtain on the closet. If closet doors are desired they can be supplied at \$5.65 each, complete with mortised lock set and hinges.

### SPECIAL DOORS

Here we show two types of front doors, either one of which may be substituted at an additional charge of \$3.00, for the glass doors shown and regularly furnished in the various designs. The No. 14 door, which is 2 feet 8 inches x 6 feet 8 inches in size, can also be furnished in pairs for the arch openings shown in the various designs at \$20.00 per pair. The price not only includes the doors but also the astragal for between the doors, lock set, two pairs of butts, top and bottom bolt, and stain and varnish. When ordering special doors please specify on your order the style number of the door you desire.



No. 10



No. 14

Picture of Inside Doors for All Aladdin Houses

Typical Aladdin Kitchen arranged with Aladdin equipment for our Pilgrim design. The kitchen in every Aladdin house can be made as attractive as the Pilgrim kitchen. Send for Aladdin Merchandise Catalog describing these and other fixtures.

We are sure we can save you considerable money on all items shown in our Merchandise Catalog. All fixtures described within its pages are shipped direct from the manufacturer to you. This eliminates handling costs, jobbers' profits, etc., usually included in the retailers' quotations. This saving we pass on to you.



### FOUNDATION POSTS

We can furnish with your house shipment, wooden foundation posts 8 feet long at \$1.00 per post, or posts 4 feet long at 50 cents per post.

### GREEN SLATE SURFACED SHINGLES

We can furnish green slate surfaced shingles instead of the slate surfaced roofing specified on the various houses at the following additional charge:

|               |         |              |         |
|---------------|---------|--------------|---------|
| Adams.....    | \$36.00 | Potomac..... | \$54.00 |
| Bluebird..... | 44.00   | Sunbeam..... | 26.00   |
| Capitol.....  | 65.00   | Victory..... | 52.00   |
| Cedars.....   | 32.00   | Welland..... | 42.00   |

### GARAGES

|                         |       |                       |       |
|-------------------------|-------|-----------------------|-------|
| Columbia.....           | 50.00 | Cadillac 18x16.....   | 18.00 |
| Coral Gables No. 2..... | 54.00 | Cadillac 18x18.....   | 20.00 |
| Coral Gables No. 3..... | 56.00 | Cadillac 18x20.....   | 22.00 |
| Elmhurst.....           | 38.00 | Ford 8x14.....        | 8.00  |
| Liberty.....            | 32.00 | Ford 10x16.....       | 12.00 |
| Linden No. 1.....       | 40.00 | Ford 10x18.....       | 14.00 |
| Linden No. 2.....       | 42.00 | Ford 12x18.....       | 15.00 |
| Linden No. 3.....       | 45.00 | Lincoln 20x18.....    | 22.00 |
| Marion.....             | 32.00 | Lincoln 20x20.....    | 24.00 |
| Mayflower 18x18.....    | 20.00 | Lincoln 12x16.....    | 14.00 |
| Mayflower 22x22.....    | 28.00 | Studebaker 12x18..... | 16.00 |
| Mayflower 26x26.....    | 38.00 | Studebaker 12x20..... | 18.00 |
| Pilgrim.....            | 40.00 |                       |       |

They are made of the same high grade materials as the roofing. The size of each shingle is 9 inches wide by 12 1/2 inches long. They lay 4 inches to the weather, thereby giving you better than three thicknesses on your roof. We can recommend them in every way to give perfect satisfaction.

### CELLAR WINDOWS

For wall opening 3 feet wide by 2 feet high, complete with frame, glazed sash and hardware.....\$3.10

For wall opening 3 feet wide by 2 feet 8 inches high, complete with frame, glazed sash and hardware.....\$3.75

It is not necessary to forward the cellar frames before the house is shipped for by leaving the wall openings described above the frames can be set in after the foundation has been erected.

### GRADE CELLAR ENTRANCE No. 2

This addition size 7x6 feet is designed to afford a grade cellar entrance and can be attached to any Aladdin house. All material necessary for the complete addition is included together with steps to kitchen and steps to basement. Price of this addition in single construction \$70, double construction \$75.



# How Aladdin Saves You Money

## The Aladdin Plan

**T**HE Aladdin Plan of home building has been in successful operation for over twenty years. The whole purpose of the plan is to help builders of modest homes.

Its first object and principal benefit, is to save money for builders of modest homes.

The Aladdin Plan has saved \$200, \$300, \$500, \$800—\$1200 and even more money on the individual homes of thousands of home builders.

Our home builder customers write us after finishing their homes and tell us these things.

They tell us how we helped them to buy their materials for less than their local lumber dealer would sell them.

They tell us how much better our certified lumber is than they could get from their local dealers.

They tell us how strong their homes are, how warm they are, how convenient the room arrangements are, and how pretty they look when finished.

## The Aladdin Company

And these customers of ours tell us how pleased they are with all their dealings with us.

And, really, we are most pleased when they say this, for the Aladdin people are human. We are just ordinary people whose life work, life experiences are devoted to home building, devoted to making home building simpler, more economical, easier and more pleasant for our customers.

Every stockholder in The Aladdin Company is a worker in the company. We are all interested in every customer and we are all interested in knowing that every customer is satisfied.

Aladdin Homes are the original and first ever sold where the materials were all prepared in the mill, cut to fit and ready to be nailed in place when the house is being built. The ready-cut house industry was founded by Aladdin—by W. J. and O. E. Sovereign and the present work-



HOME OFFICES THE ALADDIN CO.

ers, in The Aladdin Company.

---

*Tens of Thousands of American families are living in Aladdin houses. For over twenty years this organization has devoted its energies, its brains and its experience to making home building simpler, easier and less expensive. The Savings Aladdin offers you, the Service Aladdin offers you and the Safety Aladdin offers you are completely explained on pages 20, 21, 22 and 23 of this book.*

---

**The ALADDIN Guaranty** Satisfaction, or your money back, is the soundest guaranty ever written. When this guaranty is backed by a company whose assets run into the millions you are assured of absolute safety in all your dealings. Aladdin guarantees the quantity and quality of all materials and their safe arrival at destination. The Aladdin Company guarantees your satisfaction or your money back in every transaction with us.

**Over Twenty Years of Experience** The houses shown in this book are the best we have planned in our many years of experience. We have learned from furnishing homes for thousands of families, that the majority desire and require. Each size has many different floor plan arrangements to suit your family and your tastes. We have designed these houses and priced them so that you can get into a home at the lowest possible cost, or you can have added values like porches, kitchen cabinets and other luxuries and necessities. You can buy as much or as little as you like. We want to satisfy you exactly.

## How ALADDIN Saves You Money

Now let us tell you how we save you money.

The ready-cut plan avoids wasting lumber when building—saves about \$18.00 out of every \$100.00 worth of lumber ordinarily used in building your home.

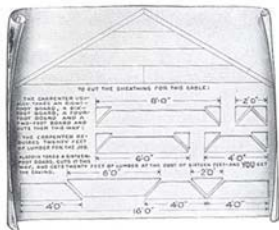
Nine-tenths of all lumber coming out of the forests are in 8-foot, 10-foot, 12-foot and 14-foot and 16-foot lengths. When you want to use other

lengths, you have to pay more money for the same quantity and quality. Aladdin designs houses to use standard lengths. That's the economy of standard parts and that's the same kind of manufacturing economy that enables automobiles to be manufactured so cheaply. And that is what enables us to put in higher quality certified lumber at lower prices.

Rapid, automatic machinery handles this lumber so swiftly, so accurately and so perfectly, that one man at a machine in our mills will cut as much as nearly a hundred carpenters can in the same length of time. And you get the benefit of this saving.

The Aladdin system of cutting the lumber in the mill saves about \$30.00 out of every \$100.00 worth of carpenter labor—as against the old system of measure, try, cut and fit on the job.





**Twenty Feet of Lumber from a Sixteen-Foot Board** Think of taking a 6-inch board sixteen feet long and getting twenty feet of 6-inch board out of it!

Think of applying this system of saving throughout all the lumber used in building your home!

Think of your own good money it saves!

Think of your money this system saves, for your house is priced to you in exactly the number of feet of lumber going into it.

To eliminate waste by scientific planning, designing and cutting of lumber is to save your money from the waste pile.

W. J. Sovereign, president of The Aladdin Company, conceived this tremendous thought, originated, perfected, and established the system.

The principle has been so thoroughly established through the success of The Aladdin Company, that it is now accepted and approved by lumbermen, contractors, engineers and scientists.

**Sturdy, Honest Lumber Makes Sturdy, Honest Homes** Early in its history, The Aladdin Company started to improve the quality of lumber that had been the custom to put into modest homes. It

started to furnish beautiful, clear lumber for the doors and interior woodwork. And ever since, it has devoted its efforts to improving its houses. It feels and believes that the modest home should have as good quality as the biggest homes. The beautiful, velvety-grained Oregon fir and yellow pine used in Aladdin homes is the finest coming out of the forests. It takes the handsomest stain, oils and varnish and holds the coloring permanently. Aladdin heat seasoned certified lumber is dehydrated by the dry steam kiln process, preventing warping, swelling or shrinking.

The paints furnished are standard high quality—the beautiful brushed brass hardware and locksets finish off the woodwork attractively. Our roofing is made by one of the largest companies in the country and is of the highest quality. Pleasure and pride can't help but come to you when you know how good a home you have built, and especially when you have secured all these good things and saved a lot of money too.

Some people will tell you not to build an Aladdin house. But most of them will be people who will lose some profit they expected to make out of you if you do. They will be people who want to sell you something, who will want to get your money. They will never be people who have built Aladdin homes.

**ALADDIN Homes Not Sectional** And please remember, always remember, that there is nothing "portable," nothing "sectional," nothing "fabricated" about an

Aladdin home. You can't take an Aladdin house down after it is built. It is designed, constructed and built just like the best architect-designed, contractor-built houses in your neighborhood. Aladdin houses are sturdy, warm and strong—real year-round homes. They have been built and lived in for years in Maine, North Dakota, Michigan, Canada—and in Alaska. The President, the General Manager and most of the executives of The Aladdin Company have been living in Aladdin homes for years.

Aladdin houses are designed to use standard lengths of certified lumber cut from standard lengths of logs as they come out of the forest. This saves waste of lumber; saves the \$18.00 out of every \$100.00 we spoke of before.

**How Lumber is Cut to Fit** The illustration shows the great saving and the simple work erecting an Aladdin home. The material is cut according to the blueprints which explain every step of the erection. The pieces fit together perfectly. And you save at least 18 percent waste lumber besides 30 percent of the labor of erection. Aladdin is the originator of the Read-i-Cut System of construction and has saved thousands of builders from \$300 to \$800 on their homes.

to fit in our mills and numbered



**Build It Yourself** We usually advise our customers to have a carpenter, if possible, but we do say that any sensible man can build an Aladdin home if he follows our simple, plain instructions and detailed blueprints of erection.

Every piece of material is cut to fit, with a few exceptions. And these pieces are marked and numbered so that you know just where every piece goes when you look at the illustrations and instructions we supply.

Of course if you build your own house, like so many other Aladdin customers have, you, too, will save money you would have to pay a carpenter.

"It's just common horse sense," wrote a customer, after he had moved into his new Aladdin. This man was so proud because he built his Aladdin himself—and he was not a carpenter either.

**ALADDIN Customers** If you want to ask advice, it is only fair to yourself, and fair to us, to ask people who know about Aladdin houses. Can a man who hasn't built an Aladdin house know as much about it, or about us, as a man who has dealt with us? We will give you the names and addresses of many customers to write to, or call on. We wouldn't do that if we didn't know they saved money, would we? All right then, if a dealer or a contractor tells you not to build an Aladdin house, ask him for his reasons and investigate these reasons by talking with a man who has built an Aladdin house. Don't take anybody's advice, who has not actually built an Aladdin house. Get your facts from people who know.

**From the Pyramids to the Woolworth Building**



To him who says the Read-Cut System is not possible or practicable, point to the Pyramids of Egypt, refer to Solomon's Temple as described in the Bible, or inspect Washington Monument, or the 57-story Woolworth Building in New York City. You will find that each was prepared, erected and completed by the Read-Cut system. But it remained for The Aladdin Company to first apply the system to your benefit in the building of a home. And thousands of American families scattered over this broad land will testify to its economy and practical success.

The pyramids aren't portable, the Woolworth Building is not portable, nor are Aladdin houses portable.

If you attempt to tear apart, or dismantle an Aladdin house, the most expert contractor could not tell it from any first-class frame dwelling because there is no difference, except possibly in the higher quality of Aladdin certified lumber.

**Avoid Profits of The Middleman**

The Aladdin Company buys immense quantities of lumber from the forests, getting absolutely the lowest prices. You, therefore, buy direct, without any middlemen to add their profit to the price of your lumber, millwork and hardware.

Is it any wonder our customers write us and tell us they saved \$300, \$500, \$800 and more, when we are able to avoid all these wastes that exist for the person who builds the old way?

For years many great corporations have been buying and building Aladdin houses for their employees. The United States Government and many states and cities have been our customers. These facts all prove that there is economy and satisfaction for our customers.

**This Catalog Our Only Salesman**

With this catalog, you are able to keep the profits in your own pocket that you ordinarily pay to your local dealers. Because we do not sell through dealers, they can't add their several hundred dollar profits to the goods you buy from us. You keep this money yourself.

When your dealer says, "Don't buy your lumber out of town," ask him where he buys the lumber he wants to sell you.

You see, he buys his lumber up here and the only money that stays in your town is the dealer's profit. Wouldn't you rather have it in your pocket than in his?

This catalog makes possible this saving—and many others.

**SEND FOR COMPLETE MERCHANDISE CATALOG**

Write today for new free copy of ALADDIN BOOK of MERCHANDISE. Our WHOLESALE PRICES save you from one-third to one-half. Be fair to yourself and investigate the amazing values we offer the home-builder; we aim to supply you at lowest possible cost consistent with real quality merchandise.

On this page we show a few selected items but limited space prevents full descriptions. The catalog gives complete details and our prices will prove a revelation.

**INSTALL YOUR OWN HEATING AND PLUMBING SYSTEMS**

Be sure to consult our engineering department concerning all heating, plumbing, and lighting problems. We can furnish all materials for complete installation; costs you nothing to get our estimates. Simply see for yourself how much we can save you!

Complete plans and instructions furnished for each job with aid of which you can do the work yourself and realize a double saving.

**SATISFACTION GUARANTEED**

The name of "Aladdin" has come to mean a recognized "Standard of Quality" in every household. It carries confidence to the buyer.

Our responsibility is your protection and we sincerely aim at all times to serve our customers on an impartial basis of "Satisfaction or Money Back." Could anything be more fair?



Aladdin Fireplace Furnaces cost no more than heating stoves. Burn any fuel. Heat the whole house evenly.

MERCHANDISE CATALOG also shows high grade stoves, hot air, steam, and hot water heating appliances.



Popular design light fixtures at small cost. We show many other designs in catalog.



**GRADE A PLUMBING FIXTURES**

This is only one of our modern plumbing fixture combinations. Every fixture guaranteed high quality. We have everything necessary for the bath, kitchen or laundry.



You cannot duplicate our price on this cabinet. Furnished in several finishes. Other cabinets also listed.



Send for Catalog Today

Aladdin Indoor Closet at extremely low price. Complete and easy to install. MERCHANDISE CATALOG also shows more elaborate outfits.

**Single and Double Construction** For years we quoted our houses in Double Construction only. An increasing demand from all parts of the country for Aladdin Houses in Single Construction has now led us to quote them both ways. Regardless of what construction you decide upon the same high quality of Aladdin Certified Lumber and Materials will be furnished.

**Porches Interchangeable** As you will notice all porches are quoted separately. This is done so that if desired, the porch can be omitted or some other porch shown in the catalog used. This is possible providing the width of the porch is not too great for the width of the house ordered.

**Blue Prints** Complete blue prints showing every step of erection are furnished with every order so that even though you may not be a carpenter, you will know just how to erect your home. Any of these houses will be reversed without additional charge. The opening for fireplaces shown in some of the photographs is not cut, so that the chimney may be omitted or its location changed from where it is shown in the picture.

**Masonry Chimneys and Fireplaces** Chimneys can be located anywhere in the house you like, for we do not cut the materials for these openings. If you do not want the fireplace which may be shown in the photograph, you need not build it. Of course, any excavation work, and the foundation work must be done on the ground. Brick, stone and cement can be had in your locality as cheaply as we could furnish it. We furnish you a foundation plan to tell you how to proceed to build the kind of foundation you want.

**Painting** You receive paint for painting the outside, two coats and stain and varnish for interior trim. You may choose natural oil and varnish, light or dark oak stain and varnish or mahogany stain and varnish. These materials are standard high quality and make a beautifully finished job.

**Shingled Walls** Shingled walls cannot be furnished for single construction. At the double construction price, we will furnish cedar shingles for the side walls instead of siding, without additional charge, which includes all other features called for in double construction.

**Stucco Walls** Sheathing and lath for stucco side walls will be furnished instead of siding for the side walls without additional charge.

**Reversing Plans** Reversing Plans means changing the rooms to the opposite sides of the house. That is, all rooms now on the right hand side would be on the left hand side and all rooms now on the left would be on the right hand side. This is sometimes desirable, depending on location of your lot and direction the house will face. We will furnish all materials, so house can be erected reversed, without charge. Kindly mention when ordering if this change is desired.

**Freight Exception** We pay the railroad freight on all our houses to all states, except the following: Texas, Louisiana, Florida, Oklahoma, New Mexico, Arkansas, Arizona, Nebraska, North and South Dakota, and Kansas. Write us for freight quotations on shipments to above states.

#### TERMS AND REFERENCES

Aladdin houses are sold for cash only. We require the full price of the house to be sent with the order to obtain the prices quoted. If, however, you prefer to send only twenty-five per cent or one-quarter of the price, with the order and pay the balance upon the arrival of the shipment, we will accept your order on this basis, providing you add \$10.00 to the price quoted to pay for expenses of shipping the house in this way.

*NOTE—This catalog supersedes all previous catalogs, and all prices herein quoted are subject to revision April 5th, 1927, July 5th, 1927 and September 5th, 1927.*

#### REFERENCES

Any bank in the United States, Bradstreet's or Dun's commercial agencies, National City Bank of New York with branches in all principal cities; First National Bank, Bay City; The Murchison National Bank, Wilmington, N. C.; Northwestern National Bank, Portland, Ore.; First National Bank, Hattiesburg, Miss., or any city official or citizen of Bay City and our customers.



**Bay County Savings Bank**  
 BAY CITY, MICHIGAN  
 December 7, 1926.

To Aladdin Customers:

We are pleased to testify to our confidence in the Aladdin Company, and to assure you that any confidence you extend them will be judiciously treated.

The men behind this organization who are perfectly responsible financially and otherwise, are all personally known to us, as is their integrity and upright business policy.

This company originated, perfected and established the *Insiput* System of construction and is the pioneer as well as the largest manufacturer of houses that we know of.

We now have full confidence that the representations of this company will be fully lived up to.

Very truly yours,  
*John P. Bay*  
 Vice President & Sgr.

# THE ALADDIN COMPANY

Offices and Mills, Bay City, Michigan,  
 Wilmington, N. Car., Portland, Ore., Toronto, Ont.

Cable Address  
 "ALADDIN"  
 W. U. Code

Write nearest office

Copyright 1927  
 THE ALADDIN CO.,  
 BAY CITY, MICH.

# ALADDIN Money-Saving GARAGES

The Aladdin garages shown below cover the demand for 95 per cent of all garages built. Aladdin garages are staunchly built of high grade materials. Lumber is all cut to fit. A couple of days' time will erect and finish one. Prices quoted are astonishingly low and include freight paid to your railroad station.

## The Ford

The Ford is made in four standard sizes. The 8x14 size being the smallest and will admit a Ford touring car with top either up or down.

Ford No. 1—8 ft. wide, 14 ft. deep....\$ 87 Freight Paid

Ford No. 2—10 ft. wide, 16 ft. deep....\$110 Freight Paid

Ford No. 3—10 ft. wide, 18 ft. deep....\$119 Freight Paid

Ford No. 4—12 ft. wide, 18 ft. deep....\$135 Freight Paid



## The Studebaker

The Studebaker will take the largest car on the market with ample room at sides for storage and working.

Studebaker No. 1—  
12 ft. wide, 16 feet deep.....\$133 Freight Paid

Studebaker No. 2—  
12 ft. wide, 18 ft. deep.....\$143 Freight Paid

Studebaker No. 3—  
12 ft. wide, 20 ft. deep.....\$153 Freight Paid

## The Cadillac

An attractive two-car garage, having four swinging doors.

Cadillac No. 1—  
18 ft. wide, 16 ft. deep..\$193 Freight Paid

Cadillac No. 2—  
18 ft. wide, 18 ft. deep..\$204 Freight Paid

Cadillac No. 3—  
18 ft. wide, 20 ft. deep..\$218 Freight Paid

Cadillac No. 4—  
18 ft. wide, 22 ft. deep..\$231 Freight Paid

## The Lincoln

Same design as The Cadillac, except that it is 20 feet wide instead of 18.

Lincoln No. 1—  
20 ft. wide, 18 ft. deep..\$220 Freight Paid

Lincoln No. 2—  
20 ft. wide, 20 ft. deep..\$231 Freight Paid



**Specifications for Aladdin Garages:** Sills, 4x4 in.; studding, 2x4 in., 24-inch centers; drop roof, one-quarter pitch; exposed eaves, one foot projection. Roof sheathing, laid tight. Best quality green slate surfaced roofing for roof. Hardware, nails and paint for two coats on exterior. Materials readi-cut and complete blue prints showing every step of erection. All garages shown are furnished without floors, as practically all auto owners prefer to build floor of concrete or cinders.

## Summer Cottages from \$180 to \$745 *And We Pay The Freight*



The summer cottage illustrated is one of our most popular designs known as The Ocean Park and is manufactured in three sizes. The 18x26-foot size sells for \$423, the 18x30-foot size for \$473 and the 20x36-foot size for \$596. Remember, we pay the freight.

Aladdin Summer Cottages are single walled, exposed studding, single matched ceiling partitions, with rooms open to the rafters.

A separate booklet is ready to be mailed to you, if you are interested in summer cottages.

# THE ALADDIN COMPANY

Offices and Mills, Bay City, Michigan,  
Wilmington, N. Car., Portland, Ore., Toronto, Ont.