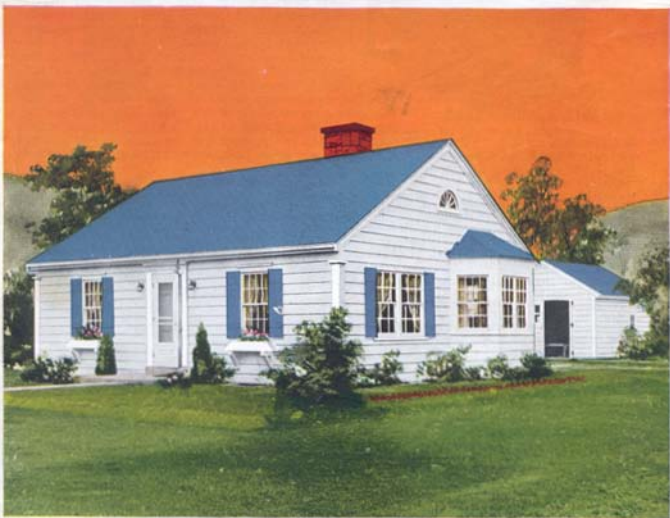




Sold By The
**GOLDEN
RULE**

ALADDIN

READI-CUT HOMES



ALADDIN Enters Thirty-Fourth Year of Pre-Fabricating Home-Building Materials by the Readi-Cut System



The ALADDIN Organization's Long Experience Means the Perfection of Machine Production, Saving of Labor on the Job and Elimination of Waste of Materials.

ALADDIN SYSTEM IS BUILT ON THIS PRINCIPLE

Modern power-driven machines can do BETTER work at a lower cost than hand labor. Then every bit of work that CAN be done by machine SHOULD be so done. The steel worker with a little hack-saw trying to cut and fit the steel girders of the modern skyscrapers should be no more out of place than the modern carpenter cutting sills, joists, and rafters. The skyscraper framework is cut to fit by machines in the steel mills, marked and numbered ready for erection.

The lumber in the Aladdin houses is cut to fit by machines in the Aladdin mills, marked and numbered ready for erection. The steel system is over forty years old—the Aladdin system over thirty-four years old.

An Aladdin Readi-cut Home saves you from twenty to thirty percent in your labor bill because the carpenter does not have to spend his time working out the construction details, and cut all the lumber by hand. Our complete drawings give him construction details that have been proven the best over a period of thirty-four years. When building the Aladdin Way, you save all the time used by a carpenter

in measuring, cutting, trying and fitting, because all of this work has been done in our factory by modern machines. A machine cut Aladdin home is better built, stronger and more substantial and it will give you a lifetime of satisfaction.

Standard size materials save waste. We save you eighteen percent in waste because our homes are designed to use standard sizes and lengths. Also all mill work, doors, windows, etc., are manufactured to standard sizes thus making it possible for us to produce them in tremendous quantities. Naturally with the large production and modern factory manufacturing methods, we effect a saving for you on all of the items entering into the construction of your home. All lumber used in Aladdin homes is standard size as adopted by The National Association of Lumber Manufacturers.

Volume the Magic Word The first rule in the dialogue of manufacturing is: To lower the cost, divide the several parts of the labor employed into simple, specialized, mechanical operations.

But this won't work without the mystic word.

And that word is "VOLUME!"

Your local contractor may build ten houses a year. Could he afford to invest \$50,000 in one machine to lower his cost on the ten houses twenty per cent?

"Volume" of business makes possible the highly specialized machinery found throughout the Aladdin mills; makes practical the investment of \$10,000 in a single machine which will lower the cost \$5.00 on a house!

But that \$5.00 is multiplied twenty to thirty times on each house and it saves every buyer of an Aladdin from \$100 to \$300 on construction cost alone.

Quantity Buying Because of the tremendous amount of building materials we purchase each year, we are in a position to buy at the lowest possible prices. The large quantity purchased makes it possible for us to obtain prices far lower than any company or individual who has a demand for only a few homes each year.

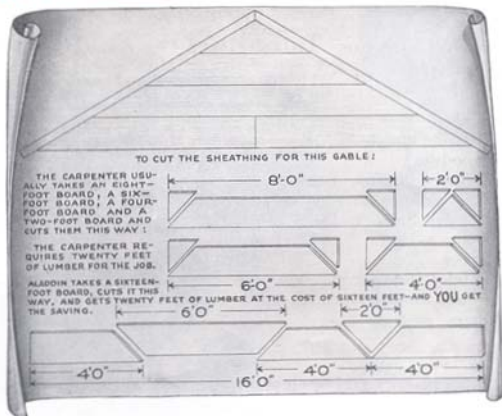
When the finest grades of materials are used, you are assured of the highest kind of an investment in your home. We never, in any case, sacrifice quality for price or profit. Aladdin Certified Lumber is guaranteed to be satisfactory.



Showing Simple Plan of Laying Out Materials

One of the most amusing remarks made is that the builder of an Aladdin home will lose as much time hunting out his material and finding the right pieces as he will save by the Readi-cut System. Any thought about time lost in hunting for pieces will be found untrue when you see the simple system of laying out materials given in our Instruction Book with every home.

How the ALADDIN Read-Cut System Saves You Money By Getting Twenty Feet of Lumber from a Sixteen Foot Board



Remember that the Lumber that's Wasted Costs You Just as Much as the Lumber that's Used.
ALADDIN Saves 18% Lumber Waste.

Efficient Planning Saves Your Money

Waste can and does influence the cost of everything you buy. This is especially true of home building.

Waste consumes your dollars and gives nothing in return. Aladdin proves to you that the Read-Cut System will save about \$18 out of each \$100 on your lumber costs.

Aladdin proves to you that the Read-cut System will save you about \$30 out of each \$100 labor cost. A study of the above drawing will give you a very clear understanding of the amazing economies of the Aladdin Read-cut System and what it means to you in dollar saving.

ALADDIN System Gives Control Over Your Costs

Why shouldn't you save these profits, like thousands of other home-builders have been doing through The Aladdin Company for the past thirty-four years?

You KNOW in advance what the materials for your house will cost you. You KNOW there will be no shortage of materials—nothing forgotten. You KNOW you will not be paying for more materials than will be used and that you will save the price of all "short ends" that are wasted by the old system.

You KNOW you will receive high grade lumber, millwork, hardware—Aladdin CERTIFIED materials. You KNOW everything will be on hand when you want it—all in one shipment and all guaranteed by Aladdin. And you KNOW in advance what your house will look like and what it will be in every way.

KNOWING gives you control—mastery of your money, of materials, of labor and of RESULTS.

Quick Shipment

We can ship any regular home in this catalog within five days after we receive your order. The average time required for delivery after leaving the factory is from three to five days. We prefer to be given a little more time if convenient to you. All homes and summer cottages are shipped complete at one time in a sealed box car from our mill at Bay City, Michigan, or Portland, Oregon, whichever is nearest to you. We send complete instructions for unloading the car so everything can be placed in convenient piles on your lot.

ALADDIN Service

You receive a scientifically designed home; a scientifically manufactured home; the benefit of buying power, thousands of times greater than your own. You receive the safeguards of our experience. You are guarded against costly extras. You have our help in keeping costs down. You save many days time. You save costly waste. You receive everything complete for your home in one shipment. You know exactly what your house will look like when completed. You save all architectural fees. You are assured prompt shipment and quick erection. You receive a bona-fide guarantee of complete satisfaction.

Will Your New Home Be Knotless?

Thirty-four years ago Aladdin established a new standard of quality for modest homes. Through all these years all exposed lumber in Aladdin houses has been free from knots and all other defects.

Your ALADDIN Home Will Be Built of:

Knotless Flooring
Knotless Siding
Knotless Outside Finish
Knotless Woodwork
Knotless Window Frames
Knotless Door Frames
Knotless Window Sash
Knotless Doors
Knotless Stairs
Knotless Porch Columns
Knotless Porch Railing
Knotless Steps

ALADDIN'S Matchless Guarantee

What Induces Us to Supply such Matchless Quality?

Aladdin believes the modest home merits the same goodness as the mansion. It should be built of material to last as long as the biggest homes. We intend to nail Aladdin quality on the highest attainable pinnacle and keep it there.

While these are excellent reasons for the careful, thinking home buyer, the real undebatable reason is summed up in the goodness, soundness and the thoroughness of the quality of Aladdin Houses. Aladdin's Guarantee: Satisfaction or your money back.

Integrity of the ALADDIN Policy

Integrity means moral soundness; it means honesty; it means freedom from corrupting influence or practice; it means strictness in the fulfillment of contracts, uprightness, square dealing. The Aladdin policy of doing business endeavors to live up to the strictest meaning of integrity. The customer must be well served—must be satisfied—must be pleased—must be a friend. The Golden Rule must govern every transaction. You who read this are entitled to know the truth of the above statement. Well, then, demand of us that proof in whatever way you wish. Shall we refer you to bankers, congressmen, postmasters, City, State or National Government officials, or, better than all shall we refer you to customers who have tested our integrity, customers in your own neighborhood? The proof is yours for the asking.



ALADDIN
*Quality Bears
Closest Inspection*

"QUALITY is remembered long after price is forgotten"

A new standard of lumber quality has been given to the world by Aladdin's famous "Certified Lumber" guaranty.

The "good enough" lumber grades, the "anything will do" grades and the multitude of substitutions for clear, knotless lumber have been shown up.

You cannot be expected to understand the complications of lumber associations' grading rules; how many circles, hearts, rings and barks make a good log nor how many knots, spots, pitch pockets or worm holes there will be to a board.

There are none of these defects in your dollar, and there should be none in what you trade your dollar for. Every tree has some clear lumber in it. It's the best part of the tree. It is the purest part of the product. Aladdin houses are built on the highest quality and all exposed lumber is taken from the best part of the tree. Our framing lumber is straight, well seasoned and sound. Aladdin houses are built on highest quality, and Golden Rule service to the customer. Aladdin has commandeered the knotless parts of the finest trees—the unsurpassed quality of defectless lumber.



ALADDIN Aluminum Protected Lumber

To own a home, having the protection, value and benefits of the latest scientific accomplishments, is a matter of pride and satisfaction.

To be one of the first in your community to own such a home is a distinction and is evidence of leadership.

The silvery flash of the Aluminum metal coat, as your home is under construction, gives notice to the world that here is a home different, sounder and more distinctive than any home around you, regardless of size. It gives notice that here is a home whose every board, which is exposed to the weather, is covered with a coat of metal protection.

The millions of tiny Aluminum flakes, by leafing together, form a continuous coat of metal protection. They keep out moisture and add years of life to the surface to which they are applied.

FINANCING AND ALADDIN TERMS

If you are in need of help to finance your Aladdin Home, we are ready to help you. Study our catalog carefully and choose the Aladdin Home that best meets your requirements. Write us a letter about it and we will immediately give you all the information you would like to have. No matter how you finance your home, whether through your local Bank or Building and Loan Association, or under the F.H.A. plan, we can offer you every assistance and furnish complete information for the lending institution. Our specifications are made to conform with the strictest F.H.A. requirements. If filing plans are required by your lending institution, we will be glad to supply them upon the receipt of a nominal deposit.

CASH WITH ORDER

Attach to your order your own personal check, bank draft, postal or express money order. We guarantee a sufficient quantity of materials to complete your home according to the drawings and specifications provided and we also guarantee safe arrival to your nearest railroad station. The cash price of each home or cottage is given on our price list.

PART CASH, BALANCE ON DELIVERY

If you prefer to send a deposit of one-fourth or 25%, we will ship your materials and you can pay the balance

through your bank when the materials arrive. There is no extra charge for handling your order in this manner.

FIVE DAY EXAMINATION

No down payment or deposit will be necessary. Simply deposit the total amount of your order in your local bank, have your banker write us stating the amount deposited will be sent us five days after your materials arrive. The bank will not release our money until the five-day period is over and you have examined the materials and found everything satisfactory.

F. H. A., BANK OR BUILDING & LOAN

If your bank or building and loan association wish to pay for your materials as the construction progresses, it is only necessary that you have them write a letter stating how and when the payments are to be made. Under these terms no down payment or deposit is required and we will arrange with your lending institution a satisfactory plan of payment. If your loan is to be insured by the F.H.A., we will accept a commitment letter from the lending institution, and in this case also it is only necessary that they state how and when our money will be paid us. Satisfactory arrangements will be made by us with the lending institution from whom you are borrowing the money.

What You Get When You Buy An ALADDIN House



A careful reading of the following will give you a clear idea of the completeness of materials and equipment which are included in the price of Aladdin Houses.

You also receive our thirty-four years of home building experience to guard you against mistakes of any kind.

It has taught us the best construction methods, the best materials to use, the best way to prepare the building plans so every step of erection can be followed even though you have had no previous experience in building. And to complete our service to you, we pay the freight and guarantee that you will receive sufficient of all materials to complete your home according to the plans and specifications.

Read the Following Carefully:

You Receive:

Foundation wall plates cut to fit.
Foundation Sills cut to fit.
Floor Joists cut to fit.
Floor Joist Bridging cut to fit.
Sub Floor Sheathing cut to fit.
Wall Sheathing cut to fit.
Wall Studding cut to fit.
Wall Sheathing cut to fit.
Ceiling Joists cut to fit.
Rafters cut to fit.
Roof Sheathing cut to fit.
Roof Ceiling cut to fit.
Water Proof Building paper between sub and finished floor.
Finish Floor 2 1/4" Tongued and Grooved.
Water Proof Building paper between wall sheathing and siding.
Siding squared ready to fit against casings and outside finish.

Cedar shingles instead of siding if preferred.
Outside finishing lumber cut ready for fitting.
Crown, bed, curve and quarter round moldings.
Water table and drip caps for exterior.
Window frames complete with inside and outside trim.
Glass in window sash ready to hang.
Window and door trim carton packed or paper wrapped.
Door frames complete with inside and outside trim.
Doors mortised ready-to-receive lock sets in carton.
Baseboard and base shoe for all rooms.
For two story houses stairways,

treads, risers, stringers, newel posts, balusters, molding, etc. cut to fit—boxed ready for erection.
Cellar Stairs where shown—all materials cut to fit.
Nails of proper size.
Mortised lock sets.
Door Hinges.
Double acting door set.
Metal Door Bumpers.
Sash Weights.
Sash Pulleys.
Sash Cord.
Sash Locks.
Sash Lifts.
Copper for window and door flashing.
State surfaced asphalt shingles.
Valley, hip and ridge flashings as needed.

Paint—three coats.
Priming coat aluminum paint.
Second and Finish coats any colors desired.
Turpentine, Putty and Oil.
Interior stains—one coat—Floor and Interior Woodwork.
Interior Varnish—two coats—Floor and Interior Woodwork.
Porch joint, porch flooring, steps, columns, balusters and porch roof sheathing and ceiling cut to fit.
Foundation plans and foundation instructions.
Complete set detailed blueprints showing every step of erection.
Copyrighted book of printed instructions and illustrations describing every step in erecting and completing the house.

Originators of Redit-Cut and Pre-Fabricated Home Building



THE ALADDIN COMPANY was founded thirty-four years ago by W. J. Sovereign and O. E. Sovereign who perfected and established the First Redit-cut System of Home Building in the world.

Today, as in the past, the company is still managed and owned by these two brothers. Customers of thirty-four years ago may write to The Aladdin Company today and know that the management is unchanged, and that they are writing to and dealing with old friends.

Their vast experience in the wants and needs of homebuilders, in the choice of the best materials for their use, in the preparation and manufacture of the lumber is of tremendous value to every customer of Aladdin. The Sovereign Brothers are ready to give you their personal time and assistance to guard you from the mistakes so often made by inexperienced homebuilders. This service costs you not one cent extra. It is included as a part of every Aladdin transaction.

The Redit-cut System as originated by The Aladdin Company has been approved by the United States Government, the Michigan State



W. J. SOVEREIGN, President

Government, and hundreds of big corporations by large purchases of Aladdin Houses. This company manufactured and shipped the first complete readi-cut home built in the world.

The Aladdin Company owns and operates mills in Michigan and Oregon, which are the largest lumber markets in the country.

THE ALADDIN COMPANY

Founded 1906

By W. J. and O. E. SOVEREIGN

HOME OFFICES AND MILLS

BAY CITY, MICHIGAN

BRANCH OFFICES AND MILLS

PORTLAND, OREGON and TORONTO, CAN.

CATALOG NO. 51

All Rights Reserved
Copyright 1940 By The Aladdin Co.



ALADDIN INTERIORS

On this page we show a photograph of the interior of our Shelbourne living room and typical photos of bath room and our standard kitchen cabinet. We will be glad to quote price on this kitchen cabinet built to the proper size for the kitchen of the Aladdin house of your choice. This cabinet is strongly built, of handsome and modern design, and housewives will find it step saving, complete, commodious and efficient.





THE VIRGINIA—Different-Interesting-Well Balanced—

Price Given
On Enclosed
Price List

And We Pay
The Freight

The Virginia attracts instant attention because it is different, interesting and well balanced. The simplicity and economy of Colonial architecture are the keynotes of the Virginia. The house presents a cozy appearance that tells you it is more than a place to live—it is a Home. Both plans are alike in general arrangement but one contains three bedrooms and the other two bedrooms, allowing you to make your selection according to your requirements. In both plans of the Virginia the living room extends out at the side, thus giving a sun parlor effect to the home. The portion of the living room that extends out at the side is separated from the balance of the living room by a circling arch at the ceiling line. This arch

does not extend down to the floor and thus it is possible to furnish the entire room as one, or to furnish the projecting portion as a sun room, if desired. You will notice that the projecting portion of the living room is lighted by windows on three sides, a virtual sun parlor. The bedrooms and bath room are separated from the living quarters. Large, generous clothes closets are provided for each bedroom which add a very valuable feature to the home. Our designers have used every available inch of floor space in these plans which mean economy to the builder. The greatest width of the Virginia home is thirty feet, making it possible to build this home on a lot forty feet or more in width.



VIRGINIA PLAN No. 1

Brighton,
Rochester, N. Y.

Dear Sirs:

In reference to your letter concerning our Aladdin Virginia home, it was very satisfactory and we would be willing to show anyone our home.

Everyone who has seen it so far has praised the design and workmanship. In building a ready cut Aladdin house, we have saved a considerable sum of money. My brother who built the house was well satisfied with the construction which saved a lot of labor and material.

John Uebelacker, Jr.



VIRGINIA PLAN No. 2



THE VASSAR—Model Story and One-Half—

Price Given
On Enclosed
Price List

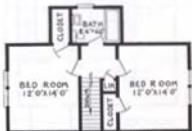
And We Pay
The Freight

The honor of being selected for picturing on the cover of this year's catalog was given to this master design—the Vassar. This is because it is so typical of demand in the modest American home. The Vassar possesses originality, character and beauty while also combining simplicity, now so much demanded in home architecture. The vestibule

entrance is surmounted by a half pitch gable roof, the front of which is embellished with artistic mouldings while pilasters form the frame for the front door. This entrance gable harmonizes with the larger gable which is a harmonious background for the fireplace chimney. Mullion windows are well proportioned to exterior wall spaces. Two thoroughly modern arrangements are shown in the floor plans below. Both offer facilities for three bedrooms, while in each case the bedroom on the first floor can be adapted to use as a sitting room or library. Opportunities for later expansion by the addition of a rear room to the first floor are offered in this plan. The Vassar is finding a host of friends and will appear favorably in any neighborhood. Write us for further information. Complete detail specifications mailed on request.



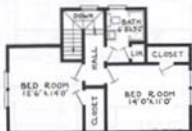
1st FLOOR PLAN No. 1



2nd FLOOR PLAN No. 1



1st FLOOR PLAN No. 2



2nd FLOOR PLAN No. 2

Welch, W. Va.

Dear Sir:

Since I have lived in my Aladdin home (twenty years) and am planning to build again I want your new catalog.

We have received many compliments on our pretty bungalow—also the fact it is so roomy—no lost space. Since your new plans comply with F. H. A. requirements, I am interested. There seems to be a great deal of building here.

Mrs. F. T. Henrize



THE PILGRIM—Three Splendid Plans—

Price Given
On Enclosed
Price List

And We Pay
The Freight



A skillful blending of Colonial and Modern details is immediately evident in the picture of the Pilgrim shown above. The main structure is in graceful proportions, yet the usual severity of the conventional Cape Cod is softened by the unusual treatment of the entrance and the addition of an exceptionally large window in the living room. Our designers have matched the beauty of the exterior with two unusually desirable interior plans.

Plan No. 1 presents a large living room which is entered from the front vestibule, and gives access to a hall at rear, to side entrance hall—grade cellar entrance, and to the dinette. Stairway to attic can be furnished from closet in right rear bedroom.

Plan No. 2 features three bedrooms with space for breakfast room set in kitchen. Stairway to second floor can also be furnished upon request. Plan No. 3, while somewhat smaller than the foregoing, retains all the handsome features shown in the photograph above, at much lower costs. Our list prices do not include this stairway, windows or floor for second floor. These plans are of course designed to meet all F.H.A. construction requirements. Write for detail specifications.

Richmond, Va.
Gentlemen:

Please send me one of your catalogs of Summer Cottages, as I am thinking about building another one on the beach. I am the owner of one of your cottages my husband purchased about fifteen years ago and have enjoyed having this cottage very much.

Mrs. T. J. Talbot





THE FERNDALE — Modern Simplicity —

Price Given
On Enclosed
Price List

And We Pay
The Freight



An exquisite example of modern simplicity in home architecture is presented in this wholly new creation. It appeals instantly to the most fastidious. Originality of treatment is shown in this recessed and paneled entrance, surmounted by small well proportioned gable. A triple mullion window is observed in the front of the living room, while double mullion matches this in the front bedroom. Wide siding adds a final touch of values. Two sizes are illustrated below, one of two bedrooms and one of three. These plans merit the closest study which will result in highest approval of the skill of the designers. Thoughtful consideration has been given to the comfort and needs of the family. Well proportioned rooms, ample closet room and wall space and step saving placing of communicating rooms testify to the values of the Ferndale. Write us for additional information.



PLAN NO. 1

Indiana, Pa.

Gentlemen:

I have a mighty good house and very good looking job as I think you will agree on looking at the picture enclosed. I am not only satisfied with the materials furnished, but also with the prompt service and business dealings. I saved \$450 on house proper, quality of materials better than I had hoped for and there was just anything but what fit just right. If I were to build again it would surely be the Aladdin Way.

Clyde Woodward.



PLAN NO. 2



THE STRATFORD — Enduring Beauty —

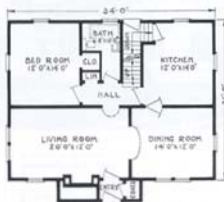
Price Given
On Enclosed
Price List

And We Pay
The Freight

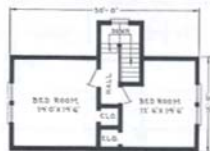
Modern architecture combined with skillful interior design distinguishes the Stratford—an immensely popular Aladdin home offered in two different sizes and plan arrangements. The Stratford is substantial—a lifetime home. Many distinctive touches lift the Stratford out of the ordinary. The snubbed gables—the shutters on the front windows—the gable roofed projection at the front providing for the entry and coat closet—the massive, circle top front door with heavy, ornamental hinges and Colonial style cylinder lock set—these are only a few of the many features that will appeal to you in this home. It is a home that will attract attention and cause favorable comment in any locality. At the prices quoted, siding or Cedar shingles as shown in the illustration can be furnished for the outside walls at no difference in price. The iron railing on the front terrace is included. Curved, plastered arches are suggested for the openings between the living rooms, dining rooms and entries and for the opening between the living room and hall of both plans, but square, cased arches can be furnished if desired at no difference in price. With the Stratford home you receive 6" x 8" built-up center girders, 2" x 10" first and 2" x 8" second floor joists on 16-inch centers and 2" x 6" rafters on 16-inch centers. Ceiling height 8'6" first floor, 8' second floor sloping to a minimum of 6' at front and rear. The roof has one-half pitch. Asphalt strip shingles are furnished for the roof covering. Complete detail specifications mailed on request.



STRATFORD No. 1—1st FLOOR PLAN



STRATFORD No. 2—1st FLOOR PLAN



STRATFORD No. 1—2nd FLOOR PLAN



STRATFORD No. 2—2nd FLOOR PLAN

Waterford, Conn.

Dear Sir:

About twenty years ago I erected one of your houses and it is still in perfect condition.

I am now interested in a small cottage to be used as a summer cottage and in time hope to build several of them here. Please let me hear from you as soon as possible.

Eugene F. Kent.



THE SHELBURNE—Fascinating in Detail—

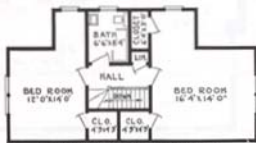
Price Given
On Enclosed
Price List

And We Pay
The Freight

The Shelburne was first erected in Bay City and opened to the public by Aladdin as a Model Home. Public approval was instant and unanimous and confirmed the good judgment of our designers. It is modeled along ultra modern lines, strong colors and contrast in the chimney, enlivening the picture from the approach. An intriguing front door, with circle top and embellished with large antique hammered hinges adding distinction to the entrance. The interior presents facilities of every nature for a family of six. The living room has three exposures, being 26 feet in depth by 15 feet in width. Curved arches lead to dining room and hallway, where you enter the downstairs suite of bedroom and toilet. Note the light, airy kitchen. Semi-open stairway leads to second floor where you find two grand bedrooms, bath, linen closet and ample clothes closets. Complete detail specifications will be sent on request.



SHELBURNE—FIRST FLOOR PLAN



SHELBURNE—SECOND FLOOR PLAN

Dear Sirs:

Manhattan, Mont.

Yes, you may refer anyone to us. We are very well satisfied with our home. It is located about five miles east of Manhattan, Mont.

J. G. Baynes.

Troy, Ohio

Dear Sirs:

I am proud to say that I built my house without the help of a carpenter. There are not words enough to tell what I think of readi-cut material. It's the only way to build.

Walter H. Stoner.



THE NEWCASTLE—Typically Cape Cod—

Price Given
On Enclosed
Price List

And We Pay
The Freight

Beauty and balance distinguish this perfect example of Cape Cod architecture. Thrifty New Englanders evolved a type of home in revolutionary times that matched their well known characteristics of simplicity, directness, economy and common sense. That it is sound architecture is evidenced by its return to popularity on the designing boards of the present day's leading architects. A living room 14 x 20½ feet! It's of a size found in few houses twice as large as the Newcastle. Dining room, kitchen and grade cellar entrance complete the perfect accommodation on the first floor. Master's bedroom matches the living room in spaciousness, and thoroughly adequate closet space is provided. Every dollar invested in this home gives magnificent values. Quality is built into every part—Aladdin Certified lumber and Aladdin Knotless finish. Complete detail specifications on request.





THE BRENTWOOD — A Notable Design —

Price Given
On Enclosed
Price List

And We Pay
the Freight

Here's a home of sunshine, flowers, trees and foliage, one of Aladdin's most notable offerings to home builders. The observer has a desire to stroll up the walk and step into a home that breathes hospitality and charm.

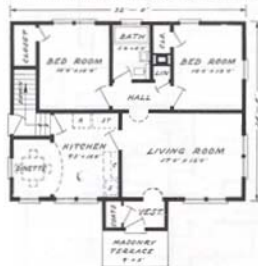
The excellent balance of the exterior is immediately apparent to the observer, the terraced entrance surmounted by a gabled vestibule and flanked by twin mullion windows.

Two sizes are shown below for the Brentwood. Each has many desirable features and each will furnish the owner

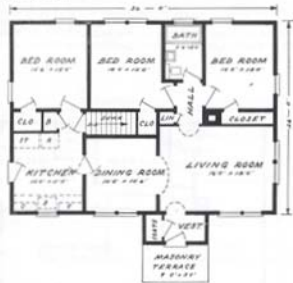
with the utmost home satisfaction.

Plan A is 32' x 24' and presents well proportioned rooms of maximum efficiency and convenience. Note alcove dinette with particularly splendid lighting.

Plan B is size 36' x 26' and offers three bedrooms and dining room. Altogether the Brentwood fulfills the highest expectation of exacting home-builders. You have only to call in the Aladdin Organization for assistance in arranging financing of your home. Our facilities and experience are at your service.



PLAN A



PLAN B



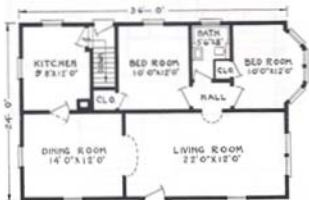
THE ROCKPORT — Cozy Design —

Price Given
On Enclosed
Price List

And We Pay
The Freight

A touch of originality is given this wholesome design by the creation of a bay window at the right, whose projecting cottage type windows harmonize splendidly with the architectural plan. Note the good looking Colonial doorway. Trimmed shutters add balance to the windows and contrast to the color scheme. Another noteworthy feature is found in the pilasters at each corner of the house. The Rockport is shown in three sizes below, each with special features to recommend it. Large living rooms are a desirable part of all plans, each has attractive dining rooms with bedrooms and baths efficiently designed. Please note that any one of these three plans can be furnished by us to face either the wide way to the street or the narrow way to the street by transposing front door and a window in the living room. A study of Aladdin specifications will reward you with the knowledge that nowhere can be found quality to exceed that which is a part of Aladdin houses. Finer materials cannot be had for we have used the greatest care to seek out and use the very best. Send for details and give us an opportunity to prove beyond doubt the facts covering the above. Complete detail specifications mailed on request.

PLAN No. 3



PLAN No. 1



PLAN No. 2



THE GABLES—Quaint and Original—

Price Given
On Enclosed
Price List And We Pay
The Freight

Unusual features distinguish this new and original home. A charming hood graces the front entrance. It is supported by well proportioned brackets and offers ample protection to the terraced steps. Roof lines, both gable and hip, are distinctive. The rear service porch is an attractive feature. Two sizes are offered to you, if you are attracted by the Gables. In both, the living room is large and given greater spaciousness by the alcove type dinette. Note that the kitchen has light and exposure on three sides. Cellar entrance is provided directly from the kitchen. Two bedrooms with ample closets, hall and bath offer every convenience and comfort. The built-in goodness, genuine quality of all materials and the beauty of this home will be a great satisfaction to every owner. Remember Aladdin's guarantee of satisfaction or your money back is your protection in building the Aladdin way. "Sold by the Golden Rule" has been tested by thousands of home builders to their lifetime gratification.



PLAN No. 1

Shipment of
any Aladdin
Home can be
made a few
days after re-
ceipt of order.



PLAN No. 2

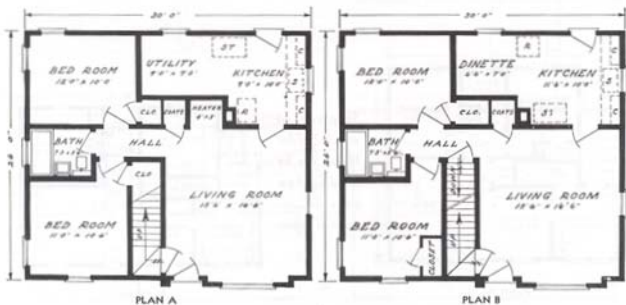


THE DRESDEN—From Connecticut Hills—

Price Given
On Enclosed
Price List

And We Pay
The Freight

Conservative and dignified aptly describes The Dresden, a design whose inspiration comes from the Connecticut hills. At first glance it appears to be a one-story home and its cost approximates just that. Yet provision is made for two good bedrooms on the second floor. Plan A is successfully arranged to be built without a basement and includes space for utility equipment or dinette and a circulating heater. The living room is of splendid size and well proportioned and lighted. Plan B includes a cellar stairway under the main stairs while you will note that utility space is adapted for a dinette. The Dresden, as priced does not include material for finishing off the second floor but should you desire this accomplished, we will quote price on request. This arrangement adapts itself to a two-bedroom, three bedroom or four bedroom plan, and at a cost astonishingly below expectations. Complete detail specifications on request.





THE ROSELAND—A Modernistic Touch—

Price Given
On Enclosed
Price List

And We Pay
The Freight

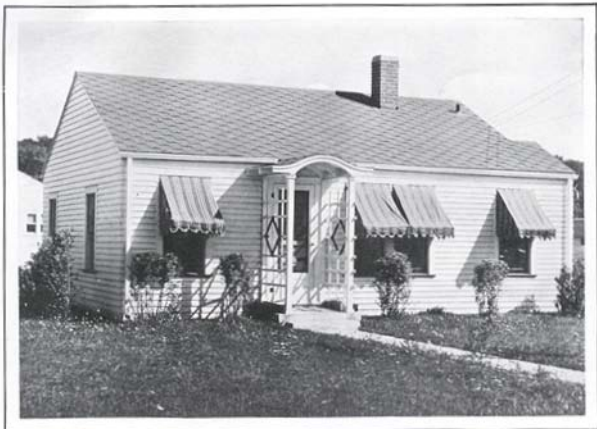
The Roseland is offered in two very desirable interior arrangements. Its exterior illustrates the charm of the hip roof which has shown increasing popularity the past year. A modernistic touch is supplied in placing the windows in the corners of the house. This window arrangement is most practical because it offers maximum wall space and good lighting effects to the interior. Plan A below is designed to be built without basement. The kitchen space is adequate for all facilities and in addition, dinette and laundry equipment. Centralized circulating heater is provided for as shown. Generous living room, two good bed rooms, bath, and three closets complete this desirable home. The Plan B Roseland carries all the above advantages but is designed with stairway for a basement design. If you desire assistance in financing your home, you have only to make this known to the Aladdin Organization and you will be aided in every possible way. Complete Detail Specifications on request.



PLAN A



PLAN B



THE MAPLES—Radiantly Modern—

Price Given
On Enclosed
Price List

And We Pay
The Freight

There is something about the Maples, one of Aladdin's newest creations, that seems to radiate warmth and cosiness the minute you see it. Sunshine and gladness must reign in such a household. Every facility found in more expensive homes is provided here. A generous sized living room with splendid wall space, sizable dining nook, efficient kitchen, bathroom conveniently located off from hall and adequate closets combine to make for comfort, convenience and efficiency. Plan A is designed for building without basement and Plan B includes cellar stairs. You will be happy in the possession of this charming home should you choose it for yourself. The modern trend is definitely toward the smaller home because you thereby achieve lower first cost, lower up-keep and easier housekeeping.

Gentlemen:

Just a few lines to let you know how much we like our home that we bought from you six months ago. We are satisfied in every way. It is of sound construction and everything in it is the best. Many of our friends who have come to see it are completely sold on Aladdin Homes. I honestly believe that I saved \$1,000 by buying your home instead of building of local materials. I am enclosing a picture of my home and hope you will sell more of them.

Hollandale, Miss.

A. S. Treadway.





THE WINSTON—Latest in Exterior—

Price Given
On Enclosed
Price List

And We Pay
The Freight

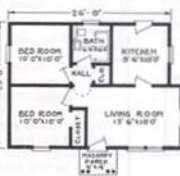
One of the newest developments in plastic building materials is the Cement-Asbestos wall shingle which is pictured above on the side walls of the Winston. These shingles are 24 x 12 inches in size, fireproof and never have to be painted. We can of course furnish them in place of siding for any Aladdin house. Write for information.

The Winston is one of our newest designs and we present it in three attractive sizes. A special feature of this home is the original columned entrance, rising from a masonry terrace. A study of the three floor plans below will show you a choice of size and design that covers a wide range of investment. Plan No. 1 is 24 x 40 feet over all and includes living room 18 x 12 feet, sun room, dining nook, kitchen, grade cellar entrance, two bedrooms, bath and closets. Fireplace may be omitted if desired. Plan No. 2 will accommodate the same sized family but with less rooms. Plan No. 3 will also accommodate a family of four on a modest scale. All materials in all three of these Winston plans are of the same high quality and the sturdy construction is unchanged from that of the largest Aladdin home. Write us about the plan that appeals to you. Complete detail specifications mailed on request.

**The Saving After Building a Small Home Will Add More to Your Happiness
Than the Luxuries of a Big House**



PLAN No. 1



PLAN No. 2



PLAN No. 3



THE BREWSTER—Beautiful in Its Simplicity—

Price Given
On Enclosed
Price List

And We Pay
The Freight

Supremely good taste was employed by our designers when they formulated the Brewster. It is a choice architectural gem, clean in line, employing a form of simple beauty and exquisite simplicity. It is truly a work of art yet most practical in execution for its very simplicity is reason for its astonishingly low cost.

You receive highest quality materials, lowest prices, prompt shipment and a guarantee covering quantity, quality and safe arrival.

Waste of materials is eliminated, every foot of lumber giving 100% value in space, convenience and comfort. The columned and hooded entrance incorporates a commodious vestibule. The choice of two interiors are afforded you, each with about the same facilities but differently arranged. Each has excellent living room, two bedrooms, dinette, bath and closets.

If you have a preference for shingled outside walls we can also meet your wishes. While a brick foundation is shown in the above picture, the foundation can be built of solid concrete, concrete blocks or tile. Wood shingle roof is also available on request.

The Brewster is furnished with 6" x 8" built-up girders, 2" x 8" joists on 16-inch centers and 2" x 6" rafters. Complete detail specifications will be sent on request.



Lyons, N. Y.

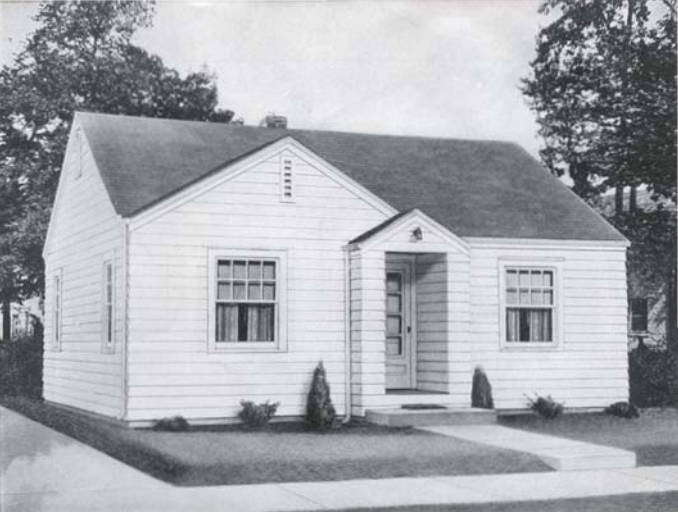
Gentlemen:

We will be glad to have you refer any customers you wish to us. We are pleased with our house and will show anyone thru and answer letters of inquiry. We are enclosing photographs of our home which we believe is better than the one in your catalog.

J. F. Schnabel

An Aladdin Home is Safer than a Wall Street Investment





THE WEBSTER—Grace and Beauty—

A spirit of friendliness and a hearty welcome greet all who approach this distinctive entrance. New England in character, The Webster will appeal to the thrifty because it offers so many satisfactory features of wholesome and complete living—at such low cost. Two plans are offered to meet the desires of both those who want to build without a basement and those who are prepared to include the basement in the cost of their home. In each plan the living room and bedrooms are of generous proportions, all rooms have cross ventilation and are well lighted. Aladdin quality materials added to efficient planning combine to create a home of high value.

Price Given
On Enclosed
Price List

And We Pay
The Freight

Troy, Ohio.

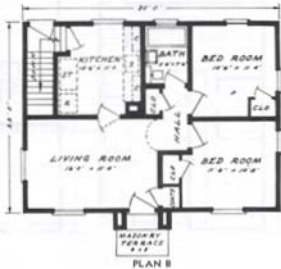
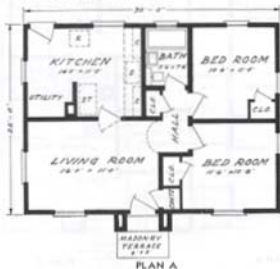
Gentlemen:

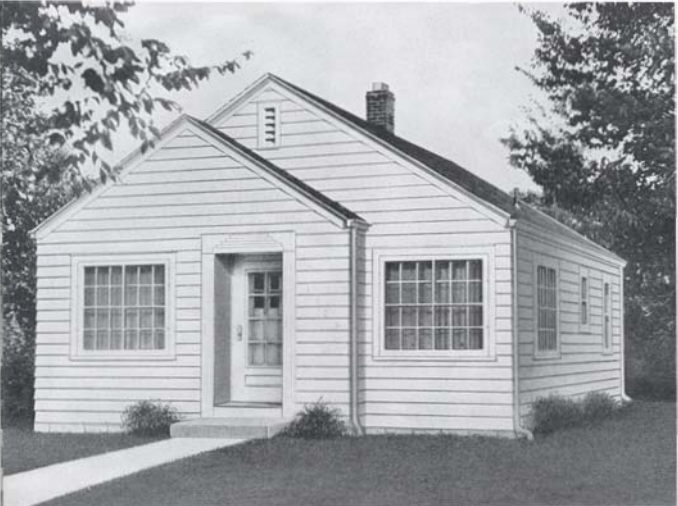
I am enclosing two pictures of our home built in 1936, which you will recognize as Ferndale and the garage as LaSalle.

We love our home very much and are proud of it. We have had many people stop to look it over—and we have seen people stop and take pictures of it.

I would very much like to receive a copy of your new catalog and am thanking you in advance for sending it.

Louis H. Chumey.





THE SUNSHINE — An Honor Design —

Price Given
On Enclosed
Price List

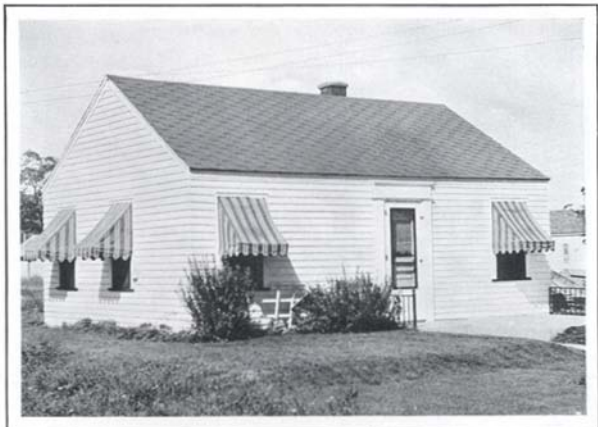
And We Pay
The Freight

New and sparkling is this latest creation of Aladdin designers. It received first honors in a recent contest. The Sunshine promises to be a first choice of many homebuilders this year, too. Wherever it has been shown, it has received high praise for exterior beauty and effective interior planning.

Three sizes are shown in the plans below. One 22'x30', one 24'x32', and one 24'x34'. Each plan offers the last degree of efficiency in arrangement and remarkable utilization of space. Observe the careful location of windows and doors to give greatest possible amount of usable wall space. Exceptional closet space is provided in each plan.

You will be permanently happy in the possession of any of the three Sunshines, because through the efficiency of Aladdin Pre-fabrication and economy of erection cost every dollar invested will give full and highest value.





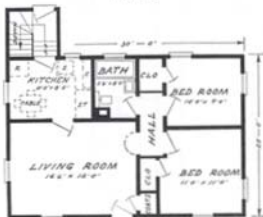
THE MONTROSE—Like A Cameo—

Price Given
On Enclosed
Price List

And We Pay
The Freight



PLAN A

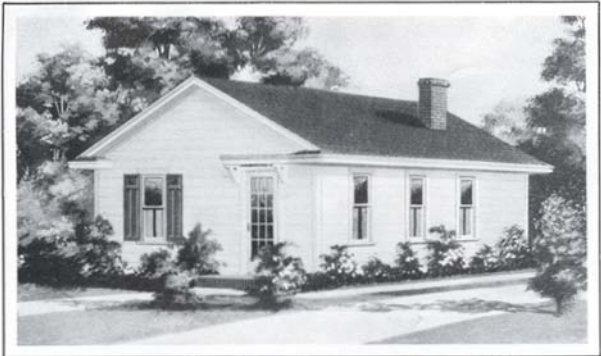


PLAN C



PLAN B

The purity of a cameo could be no more appealing to the sense of beauty than this newest product of Aladdin designers. And like a cameo big values are packed into small space. Every suggestion that would assist in keeping down the completed cost of this home has been studied, sifted and analyzed. The exterior in shape and form is delightfully proportioned — clean, straight and harmonious. Gabled front entrance is truly Colonial in spirit. Three plans are shown below. Plan A packs more roominess and livableness into 26 by 18 feet than has ever been done before, and at astonishingly low completed cost. Plans B and C are 30 x 20 feet and offer a choice between a home without basement and one with a basement. Remember, the same high quality Aladdin Certified lumber is furnished for this home as is supplied for our largest and most expensive designs. You'll be proud of every part and parcel of your home. If Plan C is desired without basement but with Utility room, stairs can be omitted and the addition used as a Utility Room.



THE OAKWOOD—Sure to Please—

Price Given
On Enclosed
Price List

And We Pay
The Freight

Here is as pretty a home as you will find anywhere—modern in design and attractive in appearance. There are four plans of the Oakwood, all different in size and arrangement. In plan A of the Oakwood, the bath room would provide a roomy pantry, opening off from the kitchen, if the bath room is not desired. In plan B, the middle bedroom could be reduced in size and used for a bath room if desired. In this way the other two bedrooms could be increased in size. In Plan C the bath room can also be converted into a pantry if this change is wanted. Write us for further information concerning these or similar changes in plan arrangements. Since the Oakwood home is designed in pure Colonial architecture, the eave construction conforms to that style. The eaves of the Oakwood home are boxed and return straight to the walls of the house, adding much to the attractiveness of the exterior. With the Oakwood home you receive 6' x 6' built-up girders. The Oakwood plan A, B and C are provided with 2' x 6' floor joists on 16-inch centers. Plan K is provided with 2' x 8' floor joists on 16-inch centers. Ceiling height 8 feet. The roof has a one-quarter pitch. Complete detail specifications mailed on request.

Webster, Mass.

Dear Sirs:

I want you to know that my Oakwood home is one of the finest homes around here and if anyone wishes to see it, I will gladly show it. We have it nearly finished now and my husband and I did all the work ourselves with one man to help nail. We did not have to hire anyone with experience, your blueprints are so clear anyone could read them.

Mrs. Adam Skrent.

Cash Selling Cuts the Cost—Every
Dollar Brings 100 Cents Value.



A very popular and widely copied plan designed by Aladdin. It is complete in accommodation including a well placed bath room.

Plan "B" will go on narrow lot and offers a fine arrangement for a family of six—three bedrooms, living-room, dining room and kitchen.

A thoroughly proven plan offering everything demanded for a home of five rooms and bath. It is impossible to secure greater utilization than is here represented.

A special feature of the Oakwood Plan "K" is the inclusion of a cellar stairs. If not wanted the space can be converted into a pantry.

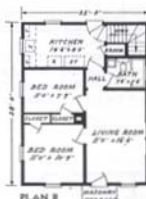


THE MARSDEN — A Big Little House —

Price Given
On Enclosed
Price List And We Pay
The Freight

Here is a big amount of home beauty, efficiency and accommodations for a very small investment. The trim, clean lines of the exterior are fully matched by the well proportioned interior arrangements. Plan A is laid out to be built without a basement while Plan B includes grade cellar stairs. In both kitchens, space is available for a dinette set. Note the expansive living rooms—16' long. Adequate closets are provided. The inside corner of living room just nicely takes

a circulating heater or stove. Both plans are adaptable to placing on the lot either facing the street with the broad front or the narrow front. Transposing outside front door and a window in the living room accomplishes this. We will be glad to make such a change to conform to your wishes. Plan C and Plan D are size 20x26 and each incorporates most desirable arrangements.



PLAN B



PLAN A



PLAN C



PLAN D

Hobart, Ind.

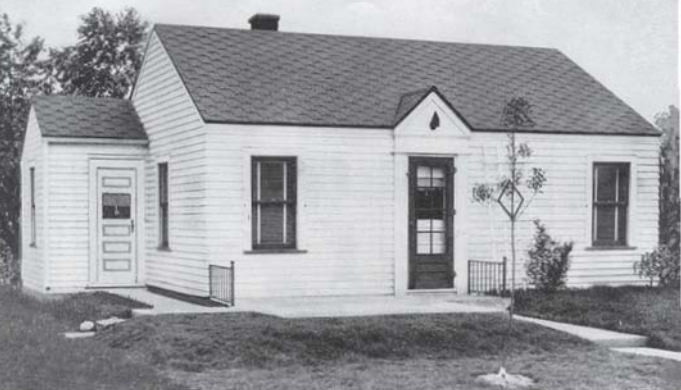
Dear Sir:

I shall be only too glad to show anyone interested in saving money and receiving good material through my Aladdin Home.

I want to take this opportunity in letting you know that we found every thing as represented. Materials fit nice and we are well pleased in every respect.

I am positive that we could not duplicate this home for a cent under \$2,000.00 more than its cost. Also should I ever build again it will be an Aladdin home.

W. E. Lankford



THE COLONIAL — Designed for Economy —

Price Given
On Enclosed
Price List

And We Pay
The Freight

This lovely home of true Colonial inspiration is commemorative of the early years of the last century when simplicity and economy were so important to home builders. It avoids decorative frills while abounding in vitality and form.

We have shown two interior arrangements, a choice between a home with basement and one without. Plan No. 1 has a generous sized living room with space well located for heater or stove. The kitchen provides adequate

location for breakfast room set or dining table, and ample space for cabinets, stove and sink. Two bedrooms, bath room and three closets complete the plan.

Plan No. 2 incorporates all of the above features but in addition, a cellar stairs is shown to basement. Should a stairway be desired to attic, it can be furnished on request by omitting the linen closet, and the stairs will lead up from the hall.

Detail specifications mailed on request.



PLAN No. 1



PLAN No. 2

Optional Materials and Equipment

Aladdin Houses—Are priced only in double construction which is double floor and wall construction. If climatic conditions permit you to use a single floor and single outside walls, we will omit the sub-flooring, wall sheathing and building paper regularly furnished with our homes and credit you full allowance for it.



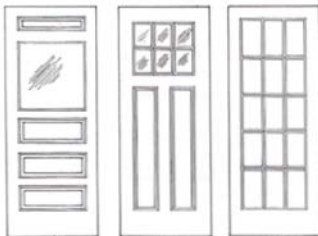
INTERIOR DOOR

in what rooms you will wish to use it.

Roof Shingles—Green slate surfaced asphalt strip shingles or No. 1 Red Cedar wood shingles are furnished with all Aladdin homes. The slate surfaced shingles have a hexagonal butt and are self spacing.

Wall Shingles—No. 1 Red Cedar shingles and shingle stain can be furnished for the outside walls in place of siding at no extra cost.

Cellar Stairway Addition—If the Aladdin home you select is not provided with a cellar stair, we can furnish the stair addition as shown at the rear of the Montrose Plan B. Write for prices.



EXTERIOR DOORS

It's Easy to Follow

ALADDIN Blueprints



FIGURE 6-REAR WALL



FIGURE 7-REAR WALL



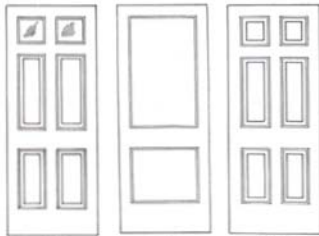
FIGURE 8-RIGHT WALL



FIGURE 9-RIGHT WALL

Here we have shown in greatly reduced size, a few figures taken from a set of Aladdin Read-cut House Plans. They show the size, length and position of every piece of material entering into the construction of the home. All materials that need mitering are mitered to the exact length and all you have to do is nail the materials in place.

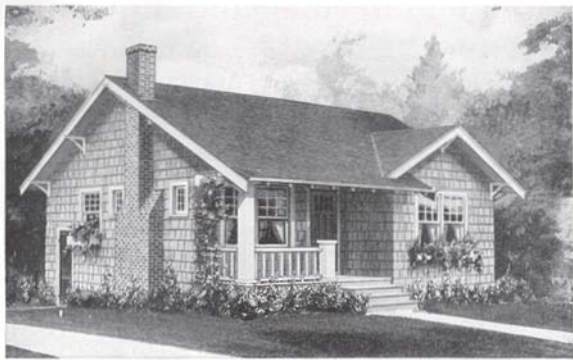
Kitchen Cabinets—The interior photographs of Aladdin kitchens show many attractive cabinet arrangements which can be furnished for any Aladdin home selected from this book. Write for prices.



2 Panel

6 Panel

INTERIOR DOORS



THE MARSHFIELD—A Snug, Distinctive Home—

Price Given
On Enclosed
Price List

And We Pay
The Freight

The Marshfield is a snug little home and the careful handling of fine details makes it a home of unusual distinction. It is compact, making it a home easy to heat and take care of. The front porch is included in the price. A fine location for a fireplace is suggested by the plans and illustration. However, we do not cut the openings for fireplaces and therefore they need not be built unless wanted. If you do not intend building the fireplace chimney, the two small windows in the end of the living room can be omitted and one full size window furnished in their place at no difference in price. The Marshfield is priced with siding or shingles on the outside walls. If you desire to shingle the outside walls as suggested in the illustration, specify them and we will furnish them for you at no additional cost. The Marshfield can be purchased in two sizes. Plan A has a conveniently located dinette, or dining alcove, off from the kitchen. A great number of small homes today are being built without a dining room and there are many good reasons for not including them. If no dining room is arranged it means a smaller home to build, to heat, to clean and maintain. It saves the cost of expensive dining room furniture. Still, many people prefer a dining room and therefore Plan B of the Marshfield is also offered. Plan B is practically the same as Plan A with the exception that a dining room is provided in place of the dinette.

The modern trend in home building has definitely turned to
Small, Convenient Houses.

Lower Investment Costs - - - Lower Maintenance Costs
and Easier Housekeeping all favor small homes.



MARSHFIELD—PLAN A

Auburn, N. Y.

Gentlemen:

We have been living in our home since October and are very much pleased with it. It is just what we have always wanted and we cannot praise it highly enough. We wish to thank you for quick shipment and service too. Had plenty of material to work with and some left over.

We have had many people ask to inspect our home and all were very much interested. We find that we saved exactly \$1400 in building this home in place of one from a local lumber dealer. The oak flooring was of a superior quality—everyone remarked about its thickness. You may refer prospective customers to us.

Mr. and Mrs. James L. Jones



MARSHFIELD—PLAN B



THE NORFOLK — Two Interesting Plans —

Price Given
On Enclosed
Price List

And We Pay
The Freight

Highly popular in its appeal to present day home builders is the type represented by the Norfolk. And there is good reason behind this popularity. Its simplicity of design, the absence of unnecessary embellishment or furbelows, insure that no money is wasted. Every dollar expended for material and labor achieves the maximum of home comfort, convenience and utility.

Two plans are shown below to meet your particular choice of a basement, or a utility room. In both plans access to the attic is provided by an enclosed stairway. It is of course possible to finish off the attic for use as either storage or added sleeping quarters. Complete detail specifications mailed on request.



PLAN No. 1



PLAN No. 2



THE BROCKTON — Inexpensive — Charming — Price Given On Enclosed Price List And We Pay The Freight

The Brockton is one of the most popular small homes of the past year. A careful study of its interior arrangement reveals the last word in comfort, convenience and efficiency. Ample wall space and cross ventilation have been accomplished in every room by our designers. Note that it contains four closets. Two plans are presented, the No. 2 Plan designed for use without a basement by in-

corporating a utility room. The No. 1 Plan shows a cellar stairs where a basement is part of the owner's wishes. A stairway leads from living room to second floor which offers a world of added space. Our price does not include flooring or partitions for the second floor but these things can be added now or later if desired. Write us for detail specifications.



PLAN No. 1



PLAN No. 2



THE CONCORD—One of Aladdin's Newest—

Price Given
On Enclosed
Price List

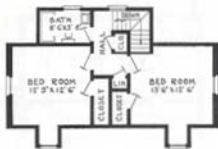
And We Pay
The Freight

Distinction is given this charming design by an entrance at once original and appealing. Pillars grace the gabled vestibule while an arched ceiling adds a new touch to the design. Narrow side lights on each side of the front door afford light to the vestibule. The main structure of the Concord is beautifully proportioned. Besides a splendidly spacious living room, the first floor contains a suite including bedroom, lavatory, linen closet, and clothes closet. These are entered from the separate hall from which the stairway also leads to the second floor. Grade cellar entrance occupies the space under the main stairway. All four downstairs rooms have double exposure for light and air. The fireplace may be built in as shown or omitted if desired. On the second floor is found two well planned bedrooms, bathroom and four closets. Always keep in mind the high quality of materials built into all Aladdin Houses and that this quality can be had at such great economies only from The Aladdin Company. The Read-cut System backed by volume production is the reason. Our Golden Rule Service and money back guarantee are your protection. Complete detail specifications mailed on request.

Shipment of
any Aladdin
Home can be
made a few
days after re-
ceipt of order.



FIRST FLOOR PLAN



SECOND FLOOR PLAN



THE HAMILTON—A Tremendously Popular Design—

Price Given
On Enclosed
Price List

And We Pay
The Freight

Many Aladdin houses have been built of brick veneer. We, of course, will quote on any design in the book, omitting siding and casings and furnishing special window and door jams. The Hamilton illustrates the attractions of the type. While the vestibule entrance shown above is of stone, it can be constructed of brick or, as is sometimes done, in wide siding. The Hamilton is a beautifully proportioned structure and will match the finest homes in any neighborhood. We will, of course, furnish this design with siding if preferred. Every modern thought is expressed in the arrangement of the interior. Note the large vestibule with cloak closet, arched opening leading from living room. Kitchen design is planned for step saving. Two splendid bedrooms are found on second floor with linen closet and bath.

We are proud to present this new Aladdin home, confident that it will give the highest satisfaction to every owner.

We would like to give you more information about it if you will write us. Sills are built up size 6" x 8", joists are 2" x 10", rafters are 2" x 6" and ceiling height 8'6" first floor and 8' second floor. Complete detail specifications will be mailed on request.



FIRST FLOOR PLAN No. 1



SECOND FLOOR PLAN No. 1



FIRST FLOOR PLAN No. 2



SECOND FLOOR PLAN No. 2



THE NEWPORT—Original in Design—

Price Given
On Enclosed
Price List

And We Pay
The Freight

This quaint design is an original as home as was ever designed! The Newport stands out in a manner that commands instant attention from the seeker of a home combining convenience and practicability with individuality of design. These features are admirably and abundantly supplied in the Newport. Two plans of the Newport are presented. While both plans include a living room, dining room, two bedrooms and a bath, it is interesting to study the differences between the two plans. Plan No. 1 is a little simpler in design and a trifle smaller in size. Plan No. 2 contains all the features of the No. 1 Plan and in addition is provided with a convenient coat closet off from the dining room, a handy place for a refrigerator at the head of the cellar stairs off from the kitchen, larger bedrooms and a larger kitchen. Both plans present the same outward appearance viewed from the front or left side. However, the No. 2 Plan is provided with a similar projection on the right side to the dining room projection on the left side of both plans. This perhaps would make the No. 2 Plan the more attractive house from the exterior when viewed from the right. Both plans, including eave projection, have a total width of twenty-nine feet and therefore, either plan could be satisfactorily built on a lot 50 feet or more in width. If the fireplace is not to be built, we can omit the two small windows on each side of the fireplace chimney and furnish one full-size window in substitution at no difference in price. Also remember that if the location of your lot or your view is such that you would prefer the living room, dining room and kitchen on the right side of your home, rather than on the left side as shown, the house can be furnished in reverse plan arrangement at no additional cost. If this change is desired you have only to mention it when placing your order. The front porch shown on the plans of both homes is included in the price. The porch is furnished without the floor with the intention that you will secure material locally and build the floor of cement, brick or tile.



NEWPORT PLAN No. 1

The roof has a one-third pitch and is furnished with green, slate surfaced asphalt strip shingles. Porch, as explained above, is included in price as are also the ornamental shutters for the front windows. Complete detail specifications mailed on request.

Robin, Idaho.

Gentlemen:

I will be very glad to show my Aladdin home to any prospective buyer you may send to see it. I am very happy with my Aladdin home and like it more each day. I feel anyone will be very pleased to have an Aladdin and they can save a lot, besides receiving better material than from local dealers. I am also pleased with the treatment received from the Aladdin Co.

Mrs. Fred Bishard.



NEWPORT PLAN No. 2

THE LUNA

From the standpoint of good architecture, splendid room arrangement and comfortable accommodations, the Luna is a summer home of superior qualities, yet it can be erected at a low cost. It is large enough for the average family. The space over the front porch can be used for storage as the porch is ceiled overhead. This storage space is very desirable in a summer cottage. The porch is size 22x8 ft. Plan No. 2 provides a splendid size living room, a kitchen and three good bedrooms. The dimensions of the Luna No. 2 will permit this cottage to be built on a narrow lot. The Luna No. 3 contains three bedrooms, living room, kitchen and large porch. The Luna No. 6 is a big, roomy cottage with four bedrooms, living room and kitchen. The Luna No. 2 and No. 3 have 2x6 in. floor joists on 24 inch centers. The Luna No. 6 has 2x8 in. floor joists on 24 inch centers. The rafters are 2x4 in. on 24 inch centers, the eaves are the exposed type. The height of the interior partitions is 7 ft. 6 in. See specifications page 39.



LUNA No. 2



LUNA No. 3



LUNA No. 6



THE ASBURY

The Asbury is a cozy summer cottage of pleasing lines. The porch can be screened-in to give an outdoor living room. The Asbury No. 1 is the smallest Aladdin cottage. It has a living room and bedroom and it's just as well built as our larger cottages. The Asbury No. 2 is 4 ft. deeper and has three rooms. It's a cute little cottage for the modest demand. Plan No. 3 size overall, 16x22 ft.

The Asbury has 4x6 in. built-up sills, the joists are 2x6 in. on 24 inch centers. The rafters are 2x4 in. on 24 inch centers. The height of interior partitions is 7 ft. 6 in. The roof has a one-quarter pitch. See specifications page 39.

Spend the first few days of your vacation building your own Aladdin Summer Cottage. It's Fun, Easy and economical. Readicut materials and the instructions we furnish make construction fast, simple and accurate.

Shamokin, Pa.
July 13, 1936

Dear Sirs:

We have given our catalog to a friend and kindly request you to send us another in case we need it. We are very much pleased with our cottage and proud to advertise your firm. It is much admired.

Leon C. Adams



ASBURY No. 1



ASBURY No. 2



ASBURY No. 3

THE OCEAN PARK

The Ocean Park is a unique design and something out of the ordinary in summer cottage architecture. Some fine features are incorporated in the four Ocean Park plan arrangements that will attract folks desiring the utmost comfort in a summer home. The main roof extends over the porch in each design, giving greater ventilation area inside and a place for storage as the porch is ceiled overhead. Plan No. 1 is a two bedroom arrangement, and is priced astonishingly low. Plan No. 2 is the same width but contains three bedrooms and rooms of larger proportions. The Plan No. 3 arrangement contains the inset porch and also two closets. Plan No. 5 is conveniently arranged, having a large living room and dining room, with three bedrooms. The sills are 4" x 6" built-up. The floor joists are 2" x 6" on 24-inch centers.

Prices
Given On
Enclosed
Price List



OCEAN PARK No. 1

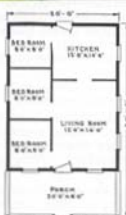
See Specifications
Page 54



OCEAN PARK No. 2



OCEAN PARK No. 3



OCEAN PARK No. 5



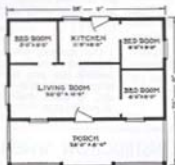
THE SHASTA

Three sizes and plans are shown for the Shasta, one of our most popular summer cottages. Overall dimensions of Plan No. 1 are 24' x 24', porch, living room, three bedrooms and kitchen make up a very complete cottage. Plan No. 2 is 28' x 26' overall. Note the porch size, 28' x 8'. The interior affords a fine living room, three bedrooms and kitchen. Plan No. 3 is size 36' x 30' overall. A splendid summer cottage of the larger type. The floor joists furnished for the Shasta No. 1 and No. 2 are 2" x 6" on 24-inch centers and for the Shasta No. 3 are 2" x 8" on 24-inch centers. The rafters are 2" x 4" on 24-inch centers. The height of the interior partitions is 8'. See specifications page 39.

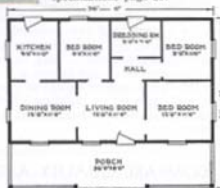
See Specifications, Page 39



SHASTA No. 1



SHASTA No. 2



SHASTA No. 3

ALADDIN SUMMER COTTAGES AND GARAGES

IN presenting this line of Aladdin Summer Cottages we have selected this year only those cottages which have proved themselves thoroughly practical during the past years. We have sold thousands of these designs. They can be found nestling on the banks of a thousand lakes and rivers throughout the entire country.

Three things are chiefly essential in a summer cottage—protection from the elements, a generous porch and plenty of light and air. In each cottage shown these things have been borne in mind. But always we have kept cost down. Strength has at no time been sacrificed, nor has weather tightness been overlooked. Every cottage is strong, tight and substantially built of the best materials.

A comparison of prices with what the same sized cottages can be built for through any other source will immediately show to you the remarkable saving, a saving you cannot afford to lose.

One feature in connection with the erection of your Aladdin summer cottage is of especial value. You will have every bit of material needed for the erection and **COMPLETION** of your cottage **ON THE GROUND AT ONE TIME**. Nothing will be forgotten or overlooked. Summer cottages are usually built at places some distance from supply dealers. Trips back and forth are expensive, in both time and money. Your Aladdin cottage arrives at destination **COMPLETE**. The lumber is all there, ready to nail in place—the windows, glass, doors, roofing, locks, nails, hinges, paint—in fact everything.

BUILD IT YOURSELF

Any one of The Aladdin Summer Cottages described in this book can be erected by you without previous experience. The materials are cut to fit in our mills ready for nailing in place, and you will be assisted by complete detailed blue prints and pictures. When erected the cottage is identical to one built by a contractor except that the material is far better than the average. Aladdin cottages are not sectional in any sense. They cannot be taken apart, or moved except as you would tear apart any dwelling house, or except as you could move any well built frame building. Satisfaction or your money back is guaranteed to every customer.

SPECIFICATIONS

The materials furnished with all Aladdin Summer Cottages will be found listed on page 39. You will note that in accordance with usual practice and customary summer cottage construction, we do not furnish any material for lining the inside of the outside walls or the ceiling. Also, inside trim, stain and varnish is not included. Two coats of high quality paint is furnished for the exterior of all summer cottages. You have your choice of colors. Front and rear outside doors are furnished but we do not include inside doors nor front or rear steps. Due to the fact that the height above ground varies so greatly in summer cottages, it is impractical for us to include steps in our prices. We therefore furnish materials from the sills up, only.

SCREENS

Can be included with any summer cottage shipment at the prices given on the enclosed price list. These prices include galvanized wire screening for porch or porches together with the necessary material to make the porch screen frames, high quality galvanized screen doors for front and rear, full length galvanized wire screens for all windows except those opening on to screen porches and necessary hardware for all screen doors, window screens and porch screens.

PRICES ON SUMMER SCREENS GIVEN ON ENCLOSED PRICE LIST

ASPHALT STRIP SHINGLES

Almost all summer cottages and garages are built with slate-surfaced asphalt roll roofing for the roof covering. For this reason Aladdin Summer Cottages and Garages are priced with roll roofing. However, we occasionally receive a request to substitute slate-surfaced, asphalt strip shingles for the roll roofing and we therefore quote prices on making this change in our specifications. See price list. On account of the low pitched porch roof on the Asbury, Shasta, Genesee, Statler and Shoreview cottages, shingles are quoted on the main roof only, roofing remaining on the porch roofs. Asphalt strip shingles are not quoted for the roof of the La Salle garages for, due to their very low pitched roofs, roll roofing is the only practical roof covering. With the La Salle garages we furnish a special, extra heavy, deck roofing which cannot be improved upon.

FOUNDATIONS

When ordering tell us whether you will build your cottage on a post foundation or a solid wall foundation so that we may furnish you with the proper foundation plan. We do not include foundation materials with any of our summer cottages. Cedar posts can be furnished for Aladdin Summer Cottages at 80 cents each for 8-foot posts or 40 cents each for 4-foot posts.

CHANGES

Our summer cottage partitions can be moved about during construction, practically at will, making it easily possible for you to rearrange the plan or alter room sizes if you wish to do so. We can sell you extra windows, etc., to assist you in making your cottage just exactly as you want it.

COMPARE QUALITY AND CONSTRUCTION WHEN COMPARING PRICE

ALADDIN

Readi Cut

Summer Cottages

Easy to Order--Easy to Build

The call of the wild--the urge of the great outdoors--can be answered with enthusiasm when one has an Aladdin Summer Cottage to go to.

Only high grade materials are furnished for Aladdin Summer Cottages. Clear and knotless bevel drop siding, knotless flooring, knotless partition material, knotless outside finish, etc., distinguish Aladdin Summer Cottages from the ordinary kind.

For instance, notice the style and thickness of our clear and knotless bevel drop siding as shown by full size drawing. This is unusual material, unusual high quality--and still our prices are low!

Immediately on receipt of your order we mail you a complete set of drawings, showing where every piece of material goes. You also receive a book of instructions and illustrations showing and explaining in a simple manner just how to build your cottage. Even if you are not experienced in carpenter work, **You Can Build Your Own Aladdin Cottage.**

Our price includes not only the materials but a large proportion of the labor--every piece of lumber in Aladdin Cottages is cut in our mills to its exact length, breadth and thickness--ready to nail in place on arrival.

All material for the erection and completion of your Aladdin Cottage will be on the ground at one time. Nothing forgotten nor overlooked. Summer cottages are usually built at places some distance from supply dealers. Trips back and forth are expensive. Your Aladdin Cottage arrives at destination complete--all lumber ready to nail in place--all windows, glass, doors, roofing, locks, nails, hinges, paint--in fact, everything.

In accordance with customary Summer Cottage Construction, the rooms are open to the rafters, and the studs on the inside of the outside walls are left exposed, showing the smooth interior surface of the Knotless Siding.

Any Aladdin Cottage can be shipped and delivered to you in about one week after receipt of your order. In another week your cottage can be ready to live in.

When erected, the cottage is identical to one built by a contractor except that the material and type of construction is far better than the average.

Specifications for Summer Cottages
--The Aladdin Company guarantees to furnish a sufficient quantity of materials to complete your summer cottage in accordance with the specifications listed below and further described in the reading matter concerning each cottage.

Quality of Materials--All lumber is guaranteed to be of high quality. Only Aladdin Certified Materials are furnished.

Girders or Sills--Built-up of 2" material to size specified on page showing cottage.

Floor Joists--Spaced on 24-inch centers, dressed and cut to fit. Size of joists specified on page showing cottage.



Studding--For walls, 2" x 4" placed on 24-inch centers, selected for quality and cut to exact length ready to be nailed into place. All walls have top and bottom plates which is the approved type of construction.

Wall Ties--Selected for quality, dressed and cut to exact length, ends mitered ready to nail in place.

Rafters--Placed on 24-inch centers and perfectly mitered and cut to fit. Size of rafters specified on page showing cottage.

Flooring--The flooring used in Aladdin Summer Cottages is Clear and knotless, tongued and grooved, accurately matched and machined to give a beautiful finish.

It is what is known as "inch" flooring but when machined down is actually $\frac{1\frac{1}{2}}{2}$ of an inch in thickness. Cut in exact length ready to nail in place.

Siding--Clear and knotless bevel drop siding manufactured so it will have a perfectly smooth interior surface against the studs. All siding cut to exact length.

Partitions--Clear and knotless double-faced beaded ceiling held at top by grooved partition cap and secured to floor by quarter-round molding on each side. All openings cased to standard size so doors can be used if desired.

Roof Sheathing--Inch lumber to be laid tight. All sheathing dressed, cut to exact length and ready to nail in place.

Roll Roofing--Made of heavy weight felt base, saturated with asphalt and surfaced with natural green slate firmly imbedded in the heavy water-proof base.

Outside Finish--Such as corner boards, window and door frames, moldings, etc., manufactured of clear and knotless stock.

Window Sash--Manufactured of knotless stock. Glass in sash ready to hang. Windows check rail type, size of glass in each sash, 26 x 24 inches, with a few exceptions where a smaller window is required to carry out the proper effect.

Outside Doors--Clear and knotless, mortised for lock sets, glass placed in them, ready to hang.

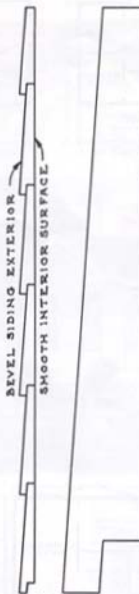
Porches--The price quoted for each cottage includes the porch. Screens quoted separately in Price List.

Paints--Two coats furnished for exterior. Unusual care has been taken in selecting paints, as the appearance of your cottage depends to a great extent upon the quality of paint used.

Hardware--Frosted brass finish lock sets, $3\frac{1}{2}$ " butts for doors, spring window bolts for all check rail windows, casement locks and hinges for swinging windows, nails of all sizes in proper amounts to complete the cottage.

Blue Prints--Drawings and a book of instructions showing every step of erection are furnished so that even though you may not be a carpenter, you will know just how to erect your cottage.

Reversing Plans--Plans can be reversed without charge. This will place all rooms on opposite side of house from that shown.



FULL SIZE DETAIL OF THE CLEAR AND KNOTLESS BEVEL DROP SIDING FURNISHED

THE SHOREVIEW

The Shoreview is furnished in three popular sizes. Any one of them can be built on a very narrow lot. The Shoreview No. 1 is a snug little layout of four rooms and porch. It is conveniently arranged and good looking, too. The other arrangements are very well planned and give you the most in comfort and convenience. The sills are 4" x 6" built-up. The floor joists are 2" x 6" on 24-inch centers. The rafters are 2" x 4" on 24-inch centers and the roof has an exposed eave. The height of the interior partitions is 7' 6". See specifications page 39.



Prices Given
On Enclosed
Price List

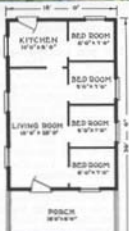
Freight Paid Price



SHOREVIEW No. 1



SHOREVIEW No. 4



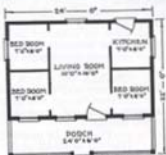
SHOREVIEW No. 3

Pawtucket, R. I.
August 10, 1936
Gentlemen:
Would you kindly send me a book of your homes including summer cottages? A friend of ours has looked over ours we bought from you in 1931 and is interested. We have the Genesee No. 3 and were have had a lot of good times in it. It is located in the country on top of a hill overlooking a lake. The house came through O. K. and just as you represented.
Mrs. Wm. Bell



THE GENESEE

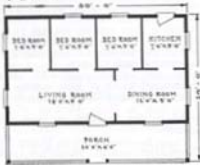
The Genesee is a strikingly good looking summer cottage and it is shown in three well planned arrangements. The Genesee No. 1 is 24' x 22' overall and contains a generous porch, living room, three bedrooms and kitchen. The full width of the cottage is utilized for a front porch. The Genesee No. 2 offers a unique arrangement of rooms, having living room and two bedrooms facing the front of the house. Kitchen and front and rear porches complete the plan. The Genesee No. 4 will attract you because of the wide expanse of living room across the front of the cottage. The sills are 4" x 6" built-up. The joists are 2" x 6" on 24-inch centers. The rafters are 2" x 4" on 24-inch centers. The height of the interior partitions is 7' 6". See specifications page 39.



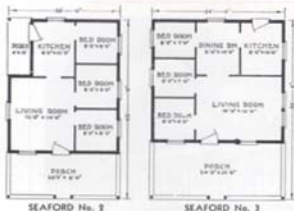
GENESEE No. 1



GENESEE No. 2



GENESEE No. 4



THE SEAFORD—

Freight Paid Price

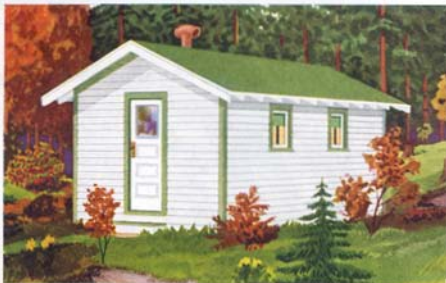
Price Given on Enclosed

Price List

Among the large types of summer homes, the Seaford stands out for the many unusual qualities it possesses. The Seaford No. 2 is a decidedly popular plan, a three bedroom design with a very convenient porch arranged at the side of the kitchen. The Seaford No. 3 has an exceptionally large porch, ten feet deep, and six rooms. Remember, we can rearrange the partitions in any summer cottage to meet your needs. The Seaford cottage has 4" x 6" built-up sills. The joists are 2" x 6" on 24-inch centers. The rafters are 2" x 4" on 24-inch centers. Roof one-quarter pitch. The height of the interior partitions is 7' 6". See Specifications Page 39.

THE HUNTER'S LODGE

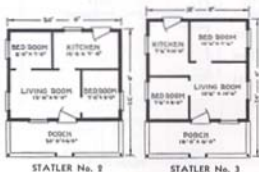
The Hunter's Lodge answers the demand for a low cost camp or "shack" in the woods. Two men can start work on the erection of the Hunter's Lodge in the morning and sleep in the completed building at night. It is a one room building and can be purchased in your choice of three sizes. The Hunter's Lodge No. 1 is 12' x 16' in size. The Hunter's Lodge No. 2 is 12' x 20' in size. No. 3, 16' x 20'. Bunks can be built up across the rear or sides or you can use double decked steel bunks or cots. We use only the best materials in Aladdin homes and summer cottages and furnish these same high quality materials for all Aladdin buildings, regardless of their size or cost. Due to the fact that the heavy, close fitting siding described on page 54 is furnished with the Hunter's Lodge, you will find the building easy to heat in the late fall months. The Hunter's Lodge contains a total of four 18" x 24" swinging casement windows, two being arranged in each side wall. A door with glass in the upper section is furnished at the front. See Specifications, page 39.



PRICES GIVEN ON
ENCLOSED PRICE LIST

THE STATLER

The Statler is a substantial, comfortable summer home, and is shown here in two different plan arrangements and sizes. The Statler No. 2 is size 20' x 22' overall having living room, two bedrooms and kitchen. The porch is 20' wide and 6' deep. This plan is one of our best sellers. The Statler No. 3 is size 18' x 24'. It is a popular type affording maximum room for its dimensions. The sills are 4" x 6" built-up. The floor joists are 2" x 6" on 24-inch centers. The rafters are 2" x 4" on 24-inch centers. The height of the interior partitions is 7' 6". See Specifications, page 39.





THE BAR HARBOR—An Ultra Modern Type—

Price Given
On Enclosed
Price List

And We Pay
The Freight

Extremely modern, but not "modernistic," the Bar Harbor presents the latest thought in summer home design. Its beauty evolves from its simplicity of form and line, yet it is as rugged as the Maine coast from where it draws its name.

Horizontal lines of the siding are accentuated by similar lines in the windows and door. The sturdy roof is in perfect harmony with this type. Three sizes are presented from which to choose. Room sizes in both plans No. 1 and No. 2 are identical. And in both, the outstanding feature—the newest idea in summer homes, is the joining of living room and porch into one single unit.

The projecting part of the living room is entirely enclosed with full casement windows. It opens up perfectly as a porch, yet can be partially or fully enclosed in inclement weather. By this arrangement the livable spaciousness of the living room is almost doubled.

Plan No. 2 offers two bedrooms while Plan No. 1 has optional four bedrooms or three bedrooms and dining room. Should you choose Plan No. 2 and desire the rear porch and dressing room we will be glad to quote price for this latter feature. Plan 3 has all the features of the two larger plans. It too can be expanded.



PLAN No. 3



PLAN No. 1

Modern, efficient
manufacturing
methods, Read-
Cut construction
and CASH Selling
result in lowest
possible prices.



PLAN No. 2

ALADDIN BUILDING ESTIMATES

EXCAVATION — Under the heading, "3" Excavation," we give the number of cubic yards of earth necessary to remove in an excavation of that depth. One-third of that amount will be the number of cubic yards in one foot of excavation. If your excavation will be less than three feet or more than three feet you can multiply the number of cubic yards for one foot of excavation by the depth you intend excavating and the resulting figure will give you the number of cubic yards to remove in your particular case. Our figures are based on making the excavation one foot larger each way than the size of the foundation.

FOUNDATIONS — Under the heading, "16" Blocks," we give you the number of concrete blocks of that size necessary for a foundation wall 10 blocks high. As concrete blocks are 8 inches high, a 10 block wall is approximately 7 feet high. If a wall of different height is built, divide the quantities by ten and multiply by the number of blocks high your wall is to be built. If a cellar is not being built under your home, a seven foot wall will not be required. It will only be necessary to carry your foundation down below the frost line. This is seldom more than 2 to 3 feet below ground or grade line and in many localities is considerably less. Should you use 24" blocks the quantity of blocks required will be one-third less. If a poured concrete foundation wall

is to be used, you will find below the number of cubic yards of poured concrete required for each home. As the mix differs in every locality, your local mason dealer can give you the quantities of cement, sand and gravel required for this type of foundation and also quote you prices on the necessary materials for the number of cubic yards of poured concrete listed. The figures are based on a wall 8" thick, not including footings.

PLASTERING SURFACE — Under this heading we give you the number of square yards of surface in the home to be lathed and plastered, and with all openings included.

CHIMNEYS — Chimneys and fireplaces are sometimes shown on our plans to suggest a practical location. Since we do not cut the openings in our homes for them, you can change the location or omit them entirely if preferred. The amount of material required for chimneys is as follows:

One 8" x 8" flue chimney, 30 bricks to each foot of height.
Two 8" x 8" flue chimney, 50 bricks to each foot of height.
Two 8" x 12" flue chimney, 35 bricks to each foot of height.
Two 8" x 12" flue chimney, 60 bricks to each foot of height.
For mortar allow 1/4 bbl. cement and 1/4 cu. yd. sand for each 1000 bricks.

DISAPPEARING STAIRWAY UTILIZES ATTIC SPACE



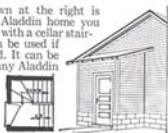
When arranging floor space it is often found that a stairway will take up too much space, this being especially true in bungalows or for attic stairs in two-story houses. Our "Aladdin" stairway takes care of this problem in a practical way and enables the builder to provide a maximum number of square feet of floor space with a maximum of convenience. When the stairway is not needed it is compactly folded and nothing is visible but a neat panel.

EASY TO OPERATE

It is always ready for service. Has a spring to assist the operator in sliding stair over panel and spring drums on each side of opening to close panel and hold stair in closed position. Is easily lowered again with but a slight pull on the chain. A child can operate it. Quotation on request.

CELLAR STAIRWAY ADDITION

The addition shown at the right is 7'x6' in size. If the Aladdin home you select is not provided with a cellar stairway this addition can be used if a basement is desired. It can be added to the rear of any Aladdin home and includes steps to the kitchen and basement with grade entrance. Quotation on request.



NAME OF HOME	Cu. Yds. Excavation 3' Deep	16" Blocks 10 Blocks High	Cu. Yds. Poured Concrete 8" Wall	Sq. Yds. Plastering Surface
Birchwood A.....	57	660	15	230
Birchwood B.....	69	720	16	273
Birchwood C.....	80	840	19	350
Birchwood D.....	111	930	21	426
Brentwood A.....	103	885	20	416
Brentwood B.....	123	960	22	510
Brewster No. 1.....	109	975	22	477
Brewster No. 2.....	108	950	21	459
Brockton No. 1.....	96	825	19	353
Brockton No. 2.....	25	330	11	353
Colonial No. 1.....	24	318	10	290
Colonial No. 2.....	83	758	17	312
Concord.....	106	1020	23	624
Dresden A-B.....	100	840	19	377
Ferndale No. 1.....	125	1050	23	507
Ferndale No. 2.....	135	1080	24	545
Gables No. 1.....	95	870	19	375
Gables No. 2.....	100	900	20	378
Hamilton No. 1.....	105	1020	23	677
Hamilton No. 2.....	92	855	19	710
Madison B.....	98	915	20	491
Madison C.....	115	1005	22	439
Madison D.....	118	1050	23	491
Maples A-B.....	83	780	18	326
Marsden A-B.....	80	735	17	324
Marsden C-D.....	69	675	16	273
Marshfield A.....	89	850	19	398
Marshfield B.....	110	900	20	498
Montrose A.....	66	675	16	266
Montrose B.....	78	735	17	307
Montrose C.....	84	825	19	334
New Castle.....	75	705	16	473
Newport No. 1.....	116	990	22	432
Newport No. 2.....	123	1050	23	460
Norfolk No. 1.....	100	825	19	387
Norfolk No. 2.....	25	330	11	387
Oakwood A.....	69	720	16	259
Oakwood B.....	63	690	16	255
Oakwood C.....	75	735	17	300
Oakwood K.....	77	780	18	347
Pilgrim No. 1.....	133	1020	23	518
Pilgrim No. 2.....	133	1020	23	500
Pilgrim No. 3.....	103	900	20	412
Plymouth No. 1.....	69	720	16	547
Plymouth No. 2.....	81	780	18	689
Rockport No. 1.....	113	930	21	400
Rockport No. 2.....	121	960	21	425
Rockport No. 3.....	94	795	18	382
Roseland A.....	81	735	17	310
Roseland B.....	81	735	17	319
Shelburne.....	129	975	22	702
Stratford No. 1.....	101	900	20	607
Stratford No. 2.....	113	960	21	712
Sunshine A.....	85	765	17	330
Sunshine B.....	98	825	19	400
Sunshine C.....	104	855	19	414
Vassar No. 1-No. 2.....	103	885	20	586
Virginia No. 1-No. 2.....	101	900	20	405
Webster A-B.....	87	795	18	360
Winston No. 1.....	115	945	21	429
Winston No. 2.....	71	705	16	265
Winston No. 3.....	56	615	14	202



THE MADISON—A True American Home—

Price Given
On Enclosed
Price List

And We Pay
The Freight

It would be hard to find a more charming home than the Madison. The roof lines are especially well proportioned. Many letters have been received from enthusiastic owners of this lovely home. It can be purchased in your choice of three different sizes and plan arrangements. The prices quoted are for siding or shingles on the exterior. If you wish to use shingles on the outside walls as shown in the illustration, advise us when ordering. An interior view of the Madison is shown at the bottom.

With the Madison home you receive 6' x 8' built-up girders, 2' x 8' floor joists on 16" centers. The roof has a one-third pitch. Asphalt strip shingles are furnished for the roof at the quoted prices. Complete detail specifications mailed on request.



PLAN B

Plan "B," a perfect two bedroom arrangement that will go on a 40-foot lot. Big value for every invested dollar is surely represented here.

With all Madison plans we have arranged for a vestibule at the front giving space for coats as shown in plans below. A French door is furnished between the living room and vestibule and the outside door is a circle top door same as we show for our Stratford. This vestibule arrangement is included in the prices quoted for the Madison home.

The Construction Used in an ALADDIN HOME Is the Same as That Used in the Best Architect-Designed, Contractor-Built House Erected Anywhere



PLAN C

Plan "C" is size 32 x 24 feet over all. A wonderful 22-foot living room and large dining room feature this plan.

—
SAVE
WASTE

—
SAVE
TIME

—
SAVE
MONEY



PLAN D

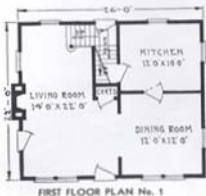
A beautiful three bedroom home, size 42 x 24 feet over all. Many buyers tell us they have saved a good thousand dollars or more on this house.



THE PLYMOUTH—A Perfect Home—

Price Given
On Enclosed
Price List

And We Pay
the Freight



The Plymouth is often referred to as a "perfect" home because it is average in size, pleasing in appearance and convenient and complete in arrangement. While the impression is that of a story-and-a-half house the second floor rooms are square with full height side walls. Two plans of the Plymouth are shown. In both plans, closet space is ample. This is particularly true in the Number 2 plan which provides for two closets off from the large, front bedroom, a closet off from each of the other bedrooms, a linen closet off from the hall and another large closet off from the hall large enough for trunks or storage. In both plans, a French door leads to the porch at the side. The porch is priced separately and can be included with your home if desired.



Ceiling height 9 feet first floor and 8 feet second floor. The main roof has a one-quarter pitch and green, slate-surfaced asphalt strip shingles are furnished for the roof covering. Complete detail specifications furnished on request.



Real Aladdin Living Room Comfort



The Living Room

Aladdin interiors are planned by experts who appreciate the priceless value of a happy, contented home life. The living room is the very center of the home—a gathering place where idle hours become golden hours of rest and relaxation. You, too, will enjoy the comforts and luxury of an Aladdin living room.

Large Cheerful Dining Rooms



The Dining Room

Simplicity and good taste are outstanding features of Aladdin dining rooms. Correct proportions and correct wall spacing with the proper arrangement of doors and windows set a definite standard equaled only in the more expensive homes.

Expert Planning Makes Convenient Interiors

**BUILD IT
YOURSELF**

ALADDIN READI-CUT GARAGES

Freight Paid
when ordered
with House

Aladdin garages are made of only the best materials and when completed are sure to please the most critical person. The lumber is entirely cut-to-fit, making erection a short and easy task. Detailed drawings show where each piece of lumber is to be placed and nailed. Aladdin offers the perfect system of buying and building garages. All freight charges paid by the Aladdin Company. Safe delivery and no shortages guaranteed.

Specifications: Materials of the same high quality as used in Aladdin houses. Sills 4" x 4", studding 2" x 4" on 24-inch centers, Clear and Knotless drop siding for side walls, see illustration of siding on page 54, 2" x 4" rafters on 24-inch centers, roof sheathing laid tight. Best quality green, slate-surfaced, roll roofing. Slate surfaced asphalt strip shingles can be had in place of roll roofing at prices quoted. See Price List. Swinging doors, each pair eight feet wide and seven and one-half feet high, except Ford No. 1 doors 7'4" wide 7'3" high, Ford No. 2, 3 and 4 doors 8' wide, 7'3" high. Garages shown with solid doors can be supplied with glass top doors at \$10.00 per pair additional. Windows furnished when shown in illustration are swinging casements. Hardware for doors and windows, nails and two coats of paint for exterior. Materials Read-Cut. Drawings and instructions for building. All garages furnished without floors as most owners prefer to build floors of cinders or concrete.



THE MERCURY

- No. 1, 12 ft. wide, 18 ft. deep.
- No. 2, 12 ft. wide, 20 ft. deep.
- No. 3, 18 ft. wide, 20 ft. deep.
- No. 4, 20 ft. wide, 20 ft. deep.

Prices Given
On Enclosed
Price List



THE HUDSON

- No. 1, 20 ft. wide, 18 ft. deep.
- No. 2, 20 ft. wide, 20 ft. deep.
- No. 3 (3 Car), 26 ft. wide, 18 ft. deep.
- No. 4 (3 Car), 26 ft. wide, 20 ft. deep.

Prices Given
On Enclosed
Price List



THE LASALLE

- No. 1, 18 ft. wide, 16 ft. deep.
- No. 2, 18 ft. wide, 18 ft. deep.
- No. 3, 18 ft. wide, 20 ft. deep.
- No. 4 (3 Car), 26 ft. wide, 18 ft. deep.
- No. 5 (3 Car), 26 ft. wide, 20 ft. deep.

Prices Given
On Enclosed
Price List



THE STUDEBAKER

- No. 1, 12 ft. wide, 16 ft. deep.
- No. 2, 12 ft. wide, 18 ft. deep.
- No. 3, 12 ft. wide, 20 ft. deep.

Prices Given
On Enclosed
Price List



THE FORD

- No. 1, 8 ft. wide, 14 ft. deep.
- No. 2, 10 ft. wide, 16 ft. deep.
- No. 3, 10 ft. wide, 18 ft. deep.
- No. 4, 12 ft. wide, 18 ft. deep.

Prices Given
On Enclosed
Price List

HOUSE	PAGE No.	HOUSE	PAGE No.
Birchwood	48	Ferndale	11
Brentwood	15	Gables	17
Brewster	22	Garages	47
Brookton	23	Hamilton	24
Colonial	28	Madison	44
Concord	33	Maples	29
Dresden	18	Marden	27

INDEX

HOUSE	PAGE No.
Marshallfield	30
Montrose	25
New Castle	14
Newport	25

HOUSE	PAGE No.	HOUSE	PAGE No.
Norfolk	31	Stratford	12
Oakwood	26	Summer Cottages	36
Pilgrim	10	Sunshine	24
Plymouth	45	Vassar	9
Rockport	16	Virginia	8
Roseland	19	Webster	23
Shellburne	13	Winston	21

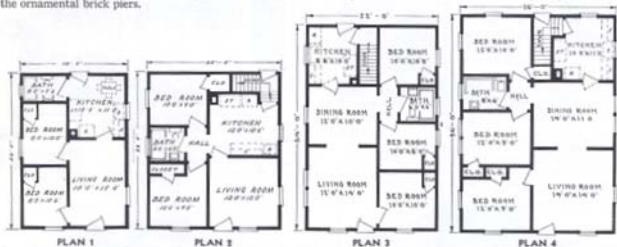


THE BIRCHWOOD—Four Sizes—

Price Given
On Enclosed
Price List

And We Pay
The Freight

The Birchwood is a home of solid attractiveness. It will measure up to your highest expectations, from the strength of its sturdy timbers to the charm and beauty of its woodwork and finish. Shrewd buyers immediately recognize the opportunity to avoid paying the top prices charged by regular dealers—an opportunity made possible by dealing direct with the Aladdin Mills. The Birchwood is presented below in four different sizes. The exterior is identical in each case, except as to location of windows. The picture above is of Plan 3. The design of the Birchwood, with porch included in prices given is of standard conventional type that has been so popular for many years. The wooden columns of the Birchwood porch can be furnished to rest on the porch floor at no difference in price. It would then be unnecessary for you to build the ornamental brick piers.



Plans Can Be Reversed

Any Aladdin Plan can be furnished reversed. A reversed plan would place all of the rooms on the opposite side of the home from that shown in the catalog plan. In a reversed plan the rooms now on the right hand side would be on the left hand side and those on the left hand side would be on the right hand side.

Masonry and Fireplaces

Chimneys can be located anywhere in the house you like for we do not cut our materials for these openings. If you do not want the fireplace which may be shown in the photograph and floor plan arrangement, you need not build it. Brick, stone, cement and plaster can be had in your locality as cheaply as we could furnish it. We furnish you a foundation plan which shows you exactly how to proceed to build your foundation. Any of our homes can be built on a pier or post foundation if desired.

Gentlemen:

Lewistown, Pa.

I can assure you that we are satisfied with our home. We have had no end of compliments on the construction and appearance of it, I can also assure you that we had more than enough material to finish it.

I am not quite finished with my grading yet. When I have finished it I would like to send a picture of it and you may use it if you so desire.

Russell Birch

Dear Sir:

Mission, Texas.

I put up my Marshfield A house in about 15 days time and everything fit to perfection, no trouble at all and lots better material than I could find here. The house came cheaper to me than it would have had I bought my material and hired a carpenter to build it. We have a lot of callers to see the Healy Cui house.

I can recommend your houses to any one that will build.

A. A. Lamb

ALADDIN ^{READI-CUT} HOMES

AND SUMMER COTTAGES

Freight Paid Price List

Freight Paid Order Blank

THE ALADDIN COMPANY

BAY CITY, MICHIGAN

Please Ship Plan Page \$

(Give Name of House or Summer Cottage)

..... \$

..... \$

..... \$

..... \$

..... \$

..... \$

..... \$

..... \$

..... \$

..... \$

Total \$

SHIPPING INSTRUCTIONS

Ship to

Town

County State

Ship on
(If no choice we select best route)

Is there a Freight Agent there?

When is shipment wanted?

If you do not know, state HOLD and notify us later)

ORDERED BY

Name

Address

County

State Date

Enclosed ☐ Check ☐ Draft ☐ Bank Letter ☐ For \$

Do not write in this space

PAINT SELECTIONS

Outside Walls

Outside Trim

Inside Trim

Finish Floors

METHOD OF PAYMENT

Check ☐ Draft ☐

Letter of Deposit ☐

Bank Letter ☐

F. H. A. Commitment ☐

Financing and ALADDIN Terms

CASH WITH ORDER. Attach to your order your personal check, Bank Draft, Postal or Express Money Order. We will ship your order freight prepaid to your nearest railroad station. We guarantee the safe arrival of all materials, and a sufficient amount to complete the home according to our drawings and specifications.

PART CASH, BALANCE C. O. D. Send us a deposit of one-quarter or 25% with your order. We will ship with a Draft attached to Bill of Lading for the balance due. You pay this Draft at your Bank upon the arrival of your materials. There is no charge for this special privilege.

FIVE DAY EXAMINATION. Deposit in your Bank or any other Loaning Institution the total amount of your order. Have them write us a letter stating that the amount of your order has been deposited with them and will be paid to The Aladdin Company within five days after the arrival of the car, with the materials for your Aladdin home. We absolutely guarantee complete satisfaction.

BANK OR BUILDING AND LOAN. If you finance your home through the cooperation of your local Bank, Building and Loan Association or any other Loaning Institution, they can pay us for your Aladdin materials as the House is being constructed. Simply have them write us a letter stating they will pay The Aladdin Company for your Aladdin Home, certain amounts as the construction progresses, or in Three Equal installments, or at a certain specified date after your materials arrive.

F. H. A. TERMS. The Federal Housing Administration, Title I Class III and Title II is a provision of the National Housing Act to provide F. H. A. insurance on mortgage loans on residential property.

The loans are made by applying to your local Bank, Building and Loan or other local Institutions approved by the Federal Housing Administration. The money is not loaned by the Government.

If your application for a loan is approved, a commitment is issued. The F. H. A. guarantees to the local institution that they will insure the mortgage for a certain specified amount when the home is completed in accordance with the plans and specifications submitted and when final inspection has been approved by a duly authorized inspector of the F. H. A. We will send to your local loaning institution a commitment letter form covering all details we require from them.

ALADDIN'S GUARANTEE

OUR Guarantee gives you absolute protection. We guarantee all materials furnished by us for your Aladdin Home to be exactly as represented in our catalog and specifications. Further that you will receive everything in perfect condition and a sufficient amount of all materials to complete the home according to the drawings and specifications furnished by us.

The Quality and Quantity of all materials as guaranteed by us gives you the strongest protection possible when backed by the oldest manufacturer of ready-cut homes in the world, having 34 years of honest dealings with home builders throughout the entire United States.

THE ALADDIN COMPANY

Freight Paid Price List on ALADDIN Homes

HOUSES

Name of House	Page	Double Construction Freight Paid Price
Birchwood No. 1.....	48	\$ 958.00
Birchwood No. 2.....	48	1167.00
Birchwood No. 3.....	48	1420.00
Birchwood No. 4.....	48	1690.00
Brentwood A.....	15	1581.00
Brentwood B.....	15	1796.00
Brewster No. 1.....	22	1595.00
Brewster No. 2.....	22	1595.00
Brockton No. 1.....	32	1483.00
Brockton No. 2.....	32	1483.00
Colonial No. 1.....	28	1097.00
Colonial No. 2.....	28	1135.00
Concord.....	33	2122.00
Dresden A.....	18	1674.00
Dresden B.....	18	1674.00
Ferndale No. 1.....	11	1885.00
Ferndale No. 2.....	11	1919.00
Gables No. 1.....	17	1519.00
Gables No. 2.....	17	1550.00
Hamilton No. 1.....	34	2194.00
Hamilton No. 2.....	34	1975.00
Madison B.....	44	1540.00
Madison C.....	44	1712.00
Madison D.....	44	1825.00
Maples A.....	20	1155.00
Maples B.....	20	1155.00
Marsden A.....	27	1228.00
Marsden B.....	27	1228.00
Marsden C.....	27	1069.00
Marsden D.....	27	1069.00
Marshfield A.....	30	1585.00
Marshfield B.....	30	1828.00
Montrose A.....	25	945.00
Montrose B.....	25	1099.00
Montrose C.....	25	1191.00

HOUSES

Name of House	Page	Double Construction Freight Paid Price
Newcastle.....	14	\$1779.00
Newport No. 1.....	35	1933.00
Newport No. 2.....	35	1967.00
Norfolk No. 1.....	31	1560.00
Norfolk No. 2.....	31	1560.00
Oakwood A.....	26	918.00
Oakwood B.....	26	955.00
Oakwood C.....	26	994.00
Oakwood K.....	26	1132.00
Pilgrim No. 1.....	10	1930.00
Pilgrim No. 2.....	10	1930.00
Pilgrim No. 3.....	10	1644.00
Plymouth No. 1.....	45	2113.00
Plymouth No. 2.....	45	2363.00
Rockport No. 1.....	16	1612.00
Rockport No. 2.....	16	1751.00
Rockport No. 3.....	16	1480.00
Roseland A.....	19	1230.00
Roseland B.....	19	1230.00
Shelburne.....	13	2826.00
Stratford No. 1.....	12	2158.00
Stratford No. 2.....	12	2427.00
Sunshine A.....	24	1269.00
Sunshine B.....	24	1471.00
Sunshine C.....	24	1512.00
Vassar No. 1.....	9	2133.00
Vassar No. 2.....	9	2133.00
Virginia No. 1.....	8	1495.00
Virginia No. 2.....	8	1495.00
Webster A.....	23	1396.00
Webster B.....	23	1396.00
Winston No. 1.....	21	1658.00
Winston No. 2.....	21	1098.00
Winston No. 3.....	21	897.00

ALL PRICES SUBJECT TO CHANGE WITHOUT NOTICE

DOUBLE CONSTRUCTION. All Aladdin Homes are priced in double construction, thus providing you with the most substantial, warm and sturdy type of home.

PORCHES. All porches illustrated in our catalog are included in the price given for the home. This does not apply to masonry stoops or steps.

ROOF COVERING. First Quality green, sate surfaced, hexagonal butt asphalt strip shingles or No. 1 Red Cedar wood shingles will be furnished for the roof of your Aladdin Home at the price quoted above. Tell us the particular shingle you wish furnished.

BRICK VENEER. If you wish to use brick veneer on the exterior walls, write us for complete details.

MASONRY MATERIALS AND PLASTER BASE.

Masonry materials are not included in our price. We recommend that you purchase from your local mason contractor all masons' supplies including rocklath or similar plaster bases. Also any type of wall board if you do not wish to plaster the interior of your home. We do not ship these materials as they are priced about the same in all localities and can be ordered from your local mason dealer as you need them.

ATTIC INSULATION. We will be glad to quote you on high grade insulation for use between the ceiling joists in your attic. It's easy to install. Write us for prices.

FREIGHT PAID PRICES. Freight paid prices quoted on this price list apply for shipment into the states of Michigan, Ohio, Pennsylvania, New York, Minnesota, Wisconsin, Iowa, Missouri, Illinois, Indiana, Kentucky, West Virginia, New Jersey, Connecticut, Massachusetts, New Hampshire, Vermont, Maine, Rhode Island, Maryland, Virginia, Tennessee and Delaware.

FREIGHT PAID PRICE LIST

— FOR —

ALADDIN Summer Cottages

SUMMER COTTAGES

Name of Cottage	Page	Price of Cottage Freight Paid	Price of Screens Freight Paid	Wood or Asphalt Shingles Instead of Roofing
Asbury	36			
Plan No. 1.....	36	\$311	\$20	\$16
Plan No. 2.....	36	369	20	20
Plan No. 3.....	36	394	20	23
Bar Harbor	42			
Plan No. 1.....	42	1344	51	69
Plan No. 2.....	42	1016	40	48
Plan No. 3.....	42	895	37	41
Genesee	40			
Plan No. 1.....	40	549	26	29
Plan No. 2.....	40	576	33	30
Plan No. 4.....	40	709	33	39
Hunters' Lodge	41			
Plan No. 1.....	41	233	9	18
Plan No. 2.....	41	263	9	19
Plan No. 3.....	41	316	9	24
Luna	36			
Plan No. 2.....	36	626	30	40
Plan No. 3.....	36	646	30	40
Plan No. 6.....	36	776	33	50

SUMMER COTTAGES

Name of Cottage	Page	Price of Cottage Freight Paid	Price of Screens Freight Paid	Wood or Asphalt Shingles Instead of Roofing
Ocean Park	37			
Plan No. 1.....	37	\$551	\$30	\$32
Plan No. 2.....	37	597	30	37
Plan No. 3.....	37	770	36	46
Plan No. 5.....	37	713	33	44
Seaford	41			
Plan No. 2.....	41	681	37	39
Plan No. 3.....	41	773	34	50
Shasta	37			
Plan No. 1.....	37	613	31	31
Plan No. 2.....	37	698	34	36
Plan No. 3.....	37	968	43	53
Shoreview	40			
Plan No. 1.....	40	410	22	22
Plan No. 3.....	40	646	31	41
Plan No. 4.....	40	526	26	30
Statler	41			
Plan No. 2.....	41	492	26	29
Plan No. 3.....	41	490	26	29

COMPLETE SUMMER COTTAGE SPECIFICATIONS — Page 39

GARAGE PRICES

If you desire a garage shipped with your order, we will be glad to quote a freight paid price on the garage selected from our catalog. We do not sell garages except when ordered with one of our houses or summer cottages and have not included garage prices in this price list.

GARAGE SPECIFICATIONS Page 47

SPECIAL NOTICE

All Prices Are Subject To
Change Without Notice

THE ALADDIN COMPANY

MANUFACTURERS OF ALADDIN READI-CUT HOUSES

Home Offices and Mills
BAY CITY, MICHIGAN

Branch Office and Mill
PORTLAND, OREGON