



Sold By The  
**GOLDEN  
RULE**

# ALADDIN

## READI-CUT HOMES



THE ROCKPORT—SEE PAGE 2—FOR PLANS AND DESCRIPTION

SAVE FOUR  
PROFITS  
ON THE

**LUMBER, MILLWORK, HARDWARE AND LABOR**



## THE ROCKPORT— RANCH HOUSE TYPE

The large photograph in full colors shown on the front cover of our catalog illustrates an exceedingly popular choice of Aladdin customers—the Rockport. The photo above pictures the Rockport with the ever popular breezeway connecting the house with either a one-car or two-car garage, which places the plan under the general classification of Ranch House.

Price Given  
On Enclosed  
Price List



PLAN No. 5

## STUDY SPECIAL FEATURES OF ROCKPORT

A touch of originality is given this wholesome design by the creation of a bay window, whose projecting cottage type windows harmonize splendidly with the architectural plan. Note the good looking Colonial doorway. Trimmed shutters add balance to the windows and contrast to the color scheme. Another noteworthy feature is found in the pilasters at each corner of the house. The Rockport is shown in three plans, each with special features to recommend it. Large living rooms are a desirable part of all plans, each has attractive dining rooms with bedrooms and baths efficiently designed. Please note that any one of these three plans can be furnished by us to face either the wide way to the street or the narrow way to the



PLAN No. 2—See Front Cover

Fort Wayne, Indiana  
April 24, 1947

Gentlemen:

Please send us your catalog of new homes. We are interested in a new home. We have the Rockport home and like it very much and would like to build some homes here in Fort Wayne, Indiana.  
Sincerely, Paul Meyer,  
Winchester Road—R.R.4

street by transposing front door in the living room. A study of Aladdin specifications will reward you with the knowledge that nowhere can be found quality to exceed that which is a part of Aladdin houses. Finer materials cannot be had for we have used the greatest care to seek out and use the very best. Send for details and give us an opportunity to prove beyond doubt the facts covering the above. Complete detail specifications mailed on request.

## RANCH HOUSES

The inspiration for the Ranch House type of home originated in the West and its present great popularity is based on sound reasons. It is, of course, primarily a one-story type, with or without porches, and features plenty of light and air. Its longest dimension usually faces the street or road and its approach is inviting and friendly. We can quote the above garage (for one car or two) with Breezeway connecting, for many Aladdin Homes shown in our catalog.



PLAN No. 3

**BUILD IT YOURSELF**



## THE BREWSTER—Beautiful in Its Simplicity—

Price Given  
On Enclosed  
Price List

Auburn, California  
March 7, 1947

Dear Sirs:

On June 14, 1929 we purchased the materials for the Brewster house from you. We've had so much fun building and living in our little home, that now due to the increase in our family, we are in need of a larger place.

We would appreciate any information on the availability of your selection of homes now, and their prices.

Thanking you, I remain

Sincerely yours,  
Mrs. Clinton F. Davies,  
Box 545  
Auburn, California

Supremely good taste was employed by our designers when they formulated the Brewster. It is a choice architectural gem, clean in line, employing a form of simple beauty and exquisite simplicity. It is truly a work of art yet most practical in execution for its very simplicity is reason for its astonishingly low cost.

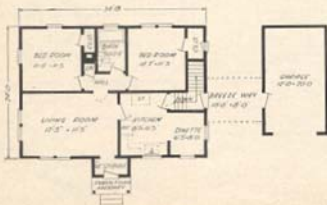
Waste of material is eliminated, every foot of lumber giving 100% value in space, convenience and comfort. The columned and hooded entrance incorporates a commodious vestibule. The interior has every facility needed in a modern home. The excellent living room will more than answer the average family's requirements as to size and wall space.

If you prefer shingles for the exterior instead of clapboard siding, we can meet your wishes although this Colonial type home is very well adapted to siding for the exterior.

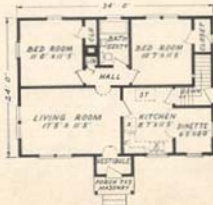
The Brewster, Plan 4 arrangement has exactly the same interior arrangement as Plan 2 but the breezeway, size 10' x 8' with the garage 12' x 20' in size, has been added and is included in the price. We can also quote the Plan 4 arrangement having a two car garage instead of the one car if you prefer the double garage.

A very convenient hood is furnished at the side over the outside door as shown in above illustration. Complete detail specifications will be sent on request listing all materials we provide for this home.

## BREWSTER with BREEZEWAY and GARAGE An Aladdin Home is Safer than a Wall Street Investment



PLAN No. 4



PLAN No. 2



## THE PILGRIM—Three Splendid Plans—

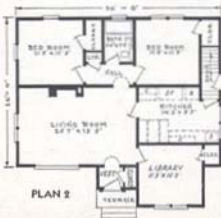
Price Given  
On Enclosed  
Price List



A skillful blending of Colonial and Modern details is immediately evident in the picture of the Pilgrim shown above. The main structure is in graceful proportions, yet the usual severity of the conventional Cape Cod is softened by the unusual treatment of the entrance and the addition of an exceptionally large window in the living room. Our designers have matched the beauty of the exterior with three unusually desirable interior plans.

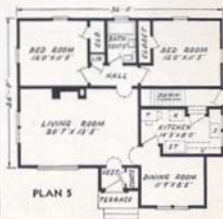
All plans present large living rooms which are entered from the front vestibule.

Plan 2 features a library and space for a breakfast set in the kitchen. Plan 4, while somewhat smaller than the foregoing, retains all the handsome features shown in the photograph above and at a much lower cost. In Plan 4 and also Plan 5 we can arrange a stair to the attic leading out of the living room and running up over the stair going down to the basement. This item is not included in our list price but we will be glad to quote on this change. Our prices do not include windows for the second floor nor do they include flooring. Write for detail specifications.



Ft. Wayne 3, Ind.  
The Aladdin Company  
Buy City, Michigan

Dear Sirs:  
On or about December 31, 1940, we purchased one of your homes—the Pilgrim. We cannot tell you how much we enjoy our home. Everyone envies us for having been able to get such nice material and good styling.  
I think you might be interested to know that we had a lovely upstairs finished about a year and a half ago. You can't realize how much room you can have in an unfinished attic until you see it. We have two very large rooms, one 14' x 18' and one 14' x 19'.  
We are so very satisfied in every respect with everything we purchased from you that we'd like to buy from you again.  
Sincerely,  
Mr. and Mrs. Richard J. Robertson.

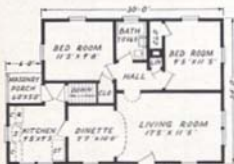




## THE GABLES—Quaint and Original—

Price Given  
On Enclosed  
Price List

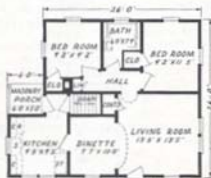
Unusual features distinguish this new and original home. A charming hood graces the front entrance. It is supported by well proportioned brackets and offers ample protection to the terraced steps. Roof lines, both gable and hip, are distinctive. The rear service porch is an attractive feature. Two sizes are offered to you, if you are attracted by the Gables. In both, the living room is large and given greater spaciousness by the alcove type dinette. Note that the kitchen has light and exposure on two sides. Cellar entrance is provided directly from the kitchen. Two bedrooms with ample closets, hall and bath offer every convenience and comfort. The built-in goodness, genuine quality of all materials and the beauty of this home will be a great satisfaction to every owner. Remember Aladdin's guarantee of satisfaction or your money back is your protection in building the Aladdin way. "Sold by the Golden Rule" has been tested by thousands of home builders to their lifetime gratification.



PLAN No. A

Shipment of  
any Aladdin  
Home can be  
made a few  
days after re-  
ceipt of order.

**BUILD IT YOURSELF**



PLAN No. B

The Aladdin Company  
Bay City, Michigan

Des Plaines, Illinois

Dear Sirs:  
Back in 1924 I bought an Aladdin home and built it at this address. We have lived in it ever since and have been very pleased with the material and everything in our Aladdin home and now we are contemplating building a home for one of our children and it's only natural that we think of Aladdin. Please send your latest catalog to us soon.

Very truly yours, Herman B. Landolt.

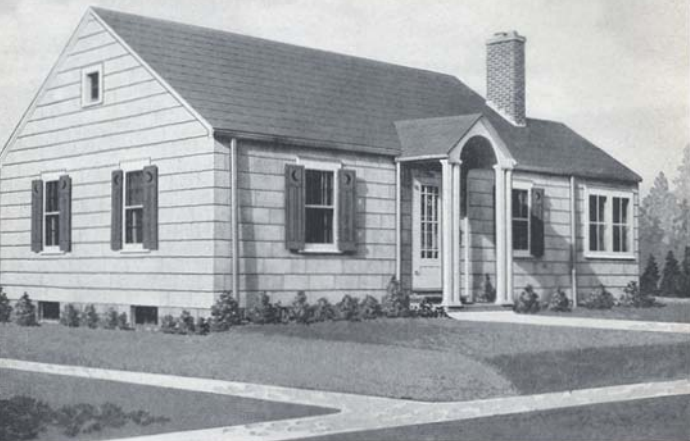
The Aladdin Company  
Bay City, Michigan

Dunker Hill, Illinois

Dear Sirs:  
I am interested in building a new home and would like to have your new catalog of read-cut homes. My father bought and built your Gables home in 1937 and is very well pleased with it. Please send your catalog as soon as possible.  
Thank you,

Sincerely,  
Mrs. George Gager.





## THE WINSTON—Latest in Exterior—

Price Given  
On Enclosed  
Price List

One of the newest developments in plastic building materials is the Cement-Asbestos wall shingle which is pictured above on the side walls of the Winston. These shingles are 24 x 12 inches in size, fireproof and never have to be painted. We can of course furnish them in place of siding for any Aladdin house. Write for information.

The Winston is one of our newest designs and we present it in two attractive sizes. A special feature of this home is the original columned entrance, rising from a masonry terrace. A study of the floor plans below will show you a choice of size and design that covers a wide range of investment. Plan No. 1 is 24x40 feet over all and includes large living room, sun room, dining nook, kitchen, grade cellar entrance, two bedrooms, bath and closets. Fireplace may be omitted if desired. Plan 5 will warrant careful study to appreciate the desirable features. All materials in these Winston plans are of the same high quality and the sturdy construction is unchanged from that of the largest Aladdin home. Write us about the plan that appeals to you. Complete detail specifications mailed on request.

Millersburg, Ohio

The Aladdin Company  
Bay City, Michigan

Dear Sirs:

We built one of your homes, the Stanhope, some 28 years ago and still like it very much. Everyone admires it.

One of our sons is going to build a house as soon as he can this spring. As he was born and raised in an Aladdin Home he wants to build one for he feels he knows what they are. Would you please send him one of your catalogs at once?

Yours truly,  
Hayes Hayman.



PLAN No. 1



PLAN No. 5



## THE CONCORD—One of Aladdin's Newest—

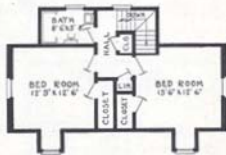
Price Given  
On Enclosed  
Price List

Distinction is given this charming design by an entrance at once original and appealing. Pillars grace the gabled vestibule while an arched ceiling adds a new touch to the design. Narrow side lights on each side of the front door afford light to the vestibule. The main structure of the Concord is beautifully proportioned. Besides a splendidly spacious living room, the first floor contains a suite including bedroom, lavatory, linen closet, and clothes closet. These are entered from the separate hall from which the stairway also leads to the second floor. Grade cellar entrance occupies the space under the main stairway. All four downstairs rooms have double exposure for light and air. The fireplace may be built in as shown or omitted if desired. On the second floor is found two well planned bedrooms, bathroom and four closets. Always keep in mind the high quality of materials built into all Aladdin Houses and that this quality can be had at such great economies only from The Aladdin Company. The Readi-cut System backed by volume production is the reason. Our Golden Rule Service and money back guarantee are your protection. Complete detail specifications mailed on request.

Shipment of  
any Aladdin  
Home can be  
made a few  
days after re-  
ceipt of order.



FIRST FLOOR PLAN



SECOND FLOOR PLAN

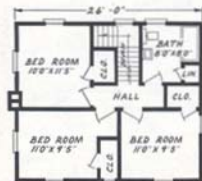


## THE PLYMOUTH—A Perfect Home —

Price Given  
On Enclosed  
Price List



FIRST FLOOR PLAN No. 3



SECOND FLOOR PLAN No. 3

The Plymouth is often referred to as a "perfect" home because it is average in size, pleasing in appearance and convenient and complete in arrangement. While the impression is that of a story-and-a-half house the second floor rooms are square with full height side walls. Two plans of the Plymouth are shown. In both plans, closet space is ample. This is particularly true in the Number 2 plan which provides for two closets off from the large, front bedroom, a closet off from each of the other bedrooms, a linen closet off from the hall and another large closet off from the hall large enough for trunks or storage. In both plans, a French door leads to the porch at the side. Ceiling height 9 feet first floor and 8 feet second floor. The main roof has a one-quarter pitch and slate-surfaced asphalt strip shingles are furnished for the roof covering. Complete detail specifications furnished on request.



FIRST FLOOR PLAN No. 2



SECOND FLOOR PLAN No. 2





## THE AMHURST—Ultra-Modern Brick—

Price Given  
on Enclosed  
Price List

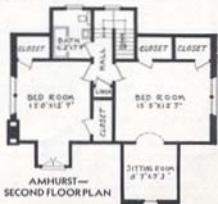
We present here a sturdy conservative American type of home that is finding great popularity at the present. In form and detail, it will always remain attractive, substantial and wholesomely livable. The three gables facing the front are excellently proportioned, decorative and of real utility. Note the front entrance, approached by a convenient terrace, while the door is bordered with cut stone and slightly recessed. The interior of the Amhurst offers a world of attractions to the careful student of plan arrangement. Eight rooms and bath afford every luxury and necessity to be found in the very finest homes. From the cloak closet in the vestibule through the living room to the dining facilities, including dining room, kitchen and breakfast room, the arrangement is most studiously conceived for convenience. From the hall at rear, entrance is to be had to downstairs bedroom, lavatory and stairway. The second floor is arranged with owner's suite, including a most desirable sitting room and double closets. The third bedroom also has two generous sized closets and linen closet and bath are of convenient access. The Amhurst will lend charm and dignity in company with the largest homes and will be a never-ending source of pleasure and pride to its owner.



### BRICK VENEER

Any Aladdin House shown in brick veneer can also be had with siding on the exterior if preferred. Write us regarding this change.

Any Aladdin Home shown with siding or shingles can be built having a brick veneer exterior. We do not furnish any of our homes for a solid masonry exterior wall.



Lakewood, N. J.

The Aladdin Co.  
Bay City, Mich.

Gentlemen:

I am interested in obtaining your catalog of ready-cut homes showing types, plans and prices.

Some 20 years ago my mother bought an all-year bungalow from your company and it is as good as new now. I am interested in a 6-room home.

Thanking you for sending a catalog promptly, I am

Very truly yours,  
Thomas Giffy.

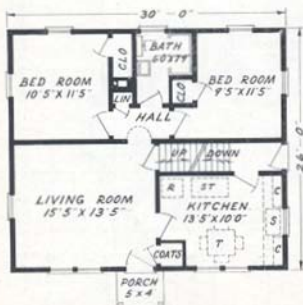


## THE NORFOLK — Two Interesting Plans —

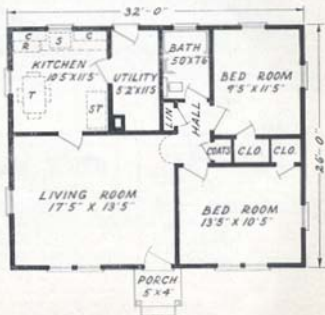
Price Given  
On Enclosed  
Price List

Highly popular in its appeal to present day home builders is the type represented by the Norfolk. And there is good reason behind this popularity. Its simplicity of design, the absence of unnecessary embellishment or furbelows, insure that no money is wasted. Every dollar expended for material and labor achieves the maximum of home comfort, convenience and utility. Two plans are

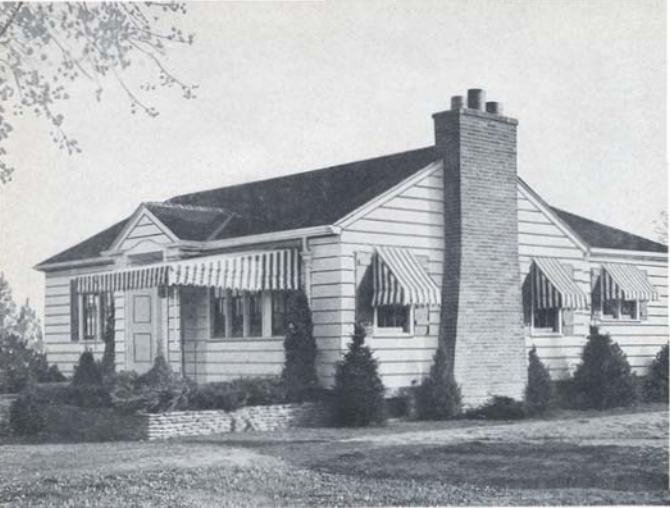
shown below to meet your particular choice. In Plan No. 1 access to the attic is provided by an enclosed stairway. It is of course possible to finish off the attic for use as either storage or added sleeping quarters. Plan No. 3 includes a utility room when basement is not desired. Complete detail specifications mailed on request.



PLAN No. 1



PLAN No. 3

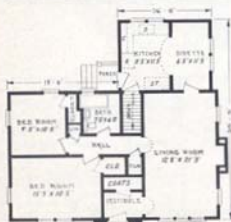


## THE FERNDALE — Modern Simplicity —

Price Given  
On Enclosed  
Price List



An exquisite example of modern simplicity in home architecture is presented in this wholly new creation. It appeals instantly to the most fastidious. Originality of treatment is shown in this recessed and paneled entrance, surmounted by small well proportioned gable. A triple mullion window is observed in the front of the living room, while double mullion matches this in the front bedroom. Wide siding adds a final touch of values. Two sizes are illustrated below, one of two bedrooms and one of three. These plans merit the closest study which will result in highest approval of the skill of the designers. Thoughtful consideration has been given to the comfort and needs of the family. Well proportioned rooms, ample closet room and wall space and step saving placing of communicating rooms testify to the values of the Ferndale. Write us for additional information.



Indiana, Pa.

Gentlemen:

I have a mighty good house and very good looking job as I think you will agree on looking at the picture enclosed. I am not only satisfied with the materials furnished, but also with the prompt service and business dealings. I saved \$400 on house proper, quality of materials better than I had hoped for and there was not anything but what fit just right. If I were to build again it would surely be the Abolition Way.

Clyde Woodward.

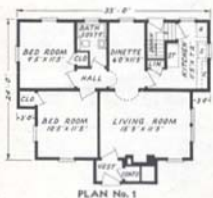




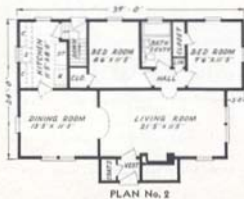
## THE MADISON—A True American Home—

Price Given  
On Enclosed  
Price List

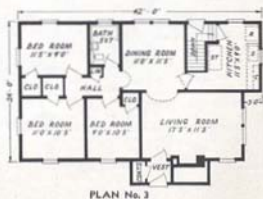
You will find this charming Madison home dotting the landscape in literally hundreds of communities. Its design is typically American and its popularity is assured. Owners of the Madison never fail to write us of their satisfaction and pleasure. The roof lines are especially interesting, while the sturdy chimney breathes hospitality. While the picture shows an open entrance, you will note the floor plans indicate a vestibule for which we furnish a beautiful circle top slab door. The inside vestibule door is a French door with divided lights. You will find three floor plan arrangements below, each studiously planned for greatest comfort, convenience and efficiency. Placement of doors and windows have been studied with furniture arrangement always in mind. In choosing the Madison you will find greater attachment and approval of your home as the future years come and go. Write us about your ideas.



The Construction Used in an ALADDIN HOME Is the Same  
as That Used in the Best Architect-Designed, Contractor-Built  
House Erected Anywhere



—  
SAVE  
WASTE  
—  
SAVE  
TIME  
—  
SAVE  
MONEY  
—





## THE VASSAR—Model Story and One-Half—

Price Given  
On Enclosed  
Price List

The Vassar is a master design. It is typical of the demand in the modest American home. The Vassar possesses originality, character and beauty while also combining simplicity, now so much demanded in home architecture.

The vestibule entrance is surmounted by a half pitch gable roof, the front of which is embellished with artistic mouldings while pilasters form the frame for the front door. This entrance gable harmonizes with the larger gable which is a harmonious background for the fireplace chimney. Mullion windows are well proportioned to the exterior wall space. The floor plan arrangement offers a well proportioned three bedroom home. Note the convenient arrangement in the hall which gives you access to the first floor lavatory, stair to second floor, kitchen and bedroom.

The Vassar is finding a host of friends and will appear favorably in any neighborhood. Write us for further information. Complete detail specifications will be mailed to you on request.

### **ALADDIN'S** *Matchless Guarantee*

What Induces Us to Supply such Matchless Quality?

Aladdin believes the modest home merits the same goodness as the mansion. It should be built of material to last as long as the biggest homes. We intend to nail Aladdin quality on the highest attainable pinnacle and keep it there.

While these are excellent reasons for the careful, thinking home buyer, the real undebatable reason is summed up in the goodness, soundness and the thoroughness of the quality of Aladdin Houses. Aladdin's Guarantee: Satisfaction or your money back.

## BUILD IT YOURSELF



1st FLOOR PLAN No. 2



2nd FLOOR PLAN No. 2







THE WINTHROP



plan at the left for the Winthrop, the bedrooms are designed with windows located at the corner. This window arrangement gives you the utmost in wall space and provides a very pleasing bedroom interior.

**SAVE TIME! SAVE WASTE! SAVE MONEY! BUILD YOUR OWN ALADDIN HOME**

## THE SALEM

Good taste is expressed in the design of this excellent example of New England architecture. It would be difficult to incorporate more living accommodations and convenience in a home of this size. Good proportions are evident in every part, both outside and thru-out the interior. The spacious living room, airy and light, would do justice to a much larger house. Should a third bedroom be desired, a door could be furnished between living room and dining room instead of arch shown. Direct entrance thru a door from living room to kitchen would be a part of this change. Send for detail specifications.

**FACTORY CUTTING AND FITTING—SAVES LABOR**



THE SALEM



FIRST FLOOR



SECOND FLOOR



## THE BIRCHWOOD—

Price Given  
On Enclosed  
Price List

The Birchwood is a home of solid attractiveness. It will measure up to your highest expectations, from the strength of its sturdy timbers to the charm and beauty of its woodwork and finish. Shrewd buyers immediately recognize the opportunity to avoid paying the top prices charged by regular dealers—an opportunity made possible by dealing direct with the Aladdin Mills. The Birchwood is presented in two different sizes. The exterior is identical in each case, except as to location of windows. The design of the Birchwood, with porch included in prices given, is of standard conventional type that has been so popular for many years. The wooden columns of the Birchwood porch can be furnished to rest on the porch floor at no difference in price. It would then be unnecessary for you to build the ornamental brick piers.



## BUILD IT YOURSELF



## THE COLONIAL—

This lovely home follows the traditional New England feeling. It avoids decorative frills while abounding in vitality and form.

The floor plan at the right provides for a pleasant and convenient kitchen with adequate location for breakfast set or dining table. There is ample space for cabinets, stove and sink. Two bedrooms, bath and three closets complete the plan.

Detail specifications will be gladly mailed on request.

Dear Sir:

Fowler, Ind.

We have received the blueprints, checking list and above all the car with the house arrived yesterday and was unloaded today. Everything arrived in fine shape and the lumber to be used is indeed excellent lumber.

A number of people have asked to see your catalog and to see our house when it is completed, and we are hoping that it will mean more business for your company from here.

We would like to take this opportunity to thank you for your help and co-operation.

Sincerely yours,  
Allen Larson.

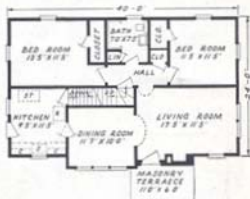




## THE SHELBURNE—Fascinating in Detail—

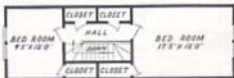
Price Given  
On Enclosed  
Price List

The Shelburne was first erected in Bay City and opened to the public by Aladdin as a Model Home. Public approval was instant and unanimous and confirmed the good judgment of our designers. It is modeled along ultra modern lines, strong colors and contrast in the chimney, enlivening the picture from the approach. An intriguing front door, with circle top and embellished with large antique hammered hinges adding distinction to the entrance. The interior presents facilities of every nature for a family of six. Curved arches lead to dining room and hallway, where you enter the downstairs suite of bedrooms and bath. Note the light, airy kitchen. Stairway leads to second floor from hall. While we have priced this home, including stairway to second floor, it is furnished without the upstairs being finished. A sub floor is however provided. We will be glad to quote you a price on the upstairs completely finished as shown in the plan at the right. Of course the upstairs can be finished off at any time in the future when it is convenient to do so. A double window is furnished in the end of the living room as shown on the floor plan.



SHELBURNE No. 2—FIRST FLOOR PLAN

## OVER FORTY YEARS HOME BUILDERS TO THE NATION



SHELBURNE No. 2—SECOND FLOOR PLAN

The Aladdin Company  
Bay City, Michigan

Lewistown, Pa.

Dear Sirs:  
We are living in one of your homes which we bought thirty years ago and we have been very well pleased with it. Now we wish to move out of town and we are planning to build another home soon.

Please send us your latest catalog and price list.

A satisfied customer,  
Mrs. Ralph T. Smeeth.

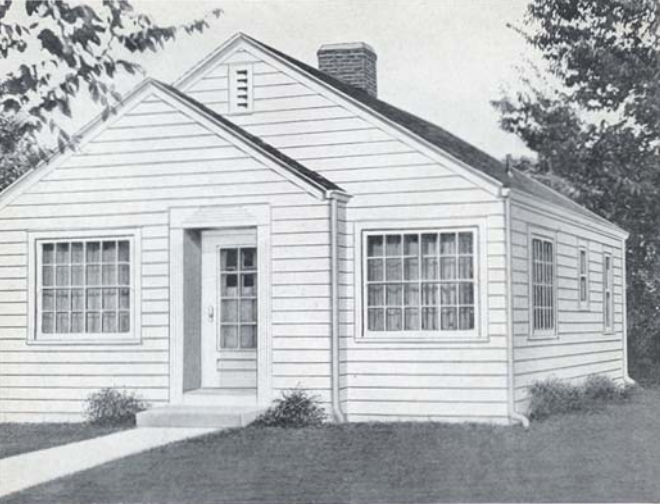
The Aladdin Company  
Bay City, Michigan

Bloomburg, Pa.

Gentlemen:  
Please send me your catalog. I bought and built one of your homes about thirty-five years ago. I am thinking of building again and have a cousin who is also thinking of building. I was so well pleased with my home that I would like to see what you have to offer now.

Yours truly,  
C. C. Gerber.

QUALITY ENDURES THROUGH THE YEARS



## THE SUNSHINE — An Honor Design —

Price Given  
On Enclosed  
Price List

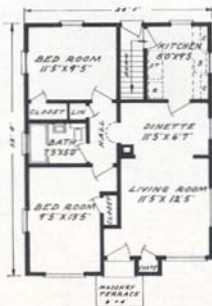
New and sparkling is this latest creation of Aladdin designers. It received first honors in a recent contest. The Sunshine promises to be a first choice of many homebuilders this year, too. Wherever it has been shown, it has received high praise for exterior beauty and effective interior planning.

Three sizes are shown in the plans below. One 22'x30', one 24'x32', and one 24'x36'. Each plan offers the last degree of efficiency in arrangement and remarkable utilization of space. Observe the careful location of windows and doors to give the greatest possible amount of usable wall space. Exceptional closet space is provided in each plan.

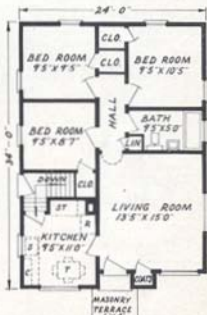
You will be permanently happy in the possession of any of the three Sunshines, because through the efficiency of Aladdin Pre-fabrication and economy of erection cost every dollar invested will give full and highest value.



PLAN D



PLAN B



PLAN E





## THE HAMILTON—A Tremendously Popular Design—

Price Given  
On Enclosed  
Price List

Many Aladdin houses have been built of brick veneer. We, of course, will quote on any design in the book, omitting siding and casings and furnishing special window and door jams. The Hamilton illustrates the attractions of the type. While the vestibule entrance shown above is of stone, it can be constructed of brick or, as is sometimes done, in wide siding. The Hamilton is a beautifully proportioned structure and will match the finest homes in any neighborhood. We will, of course, furnish this design with siding if preferred. Every modern thought is expressed in the arrangement of the interior. Note the large vestibule with cloak closet, arched opening leading from living room. Kitchen design is planned for step saving. Two splendid bedrooms are found on second floor with linen closet and bath.

We are proud to present this new Aladdin home, confident that it will give the highest satisfaction to every owner. We would like to give you more information about it if you will write us. Complete detail specifications will be mailed on request.



FIRST FLOOR PLAN No. 1



SECOND FLOOR PLAN No. 1



FIRST FLOOR PLAN No. 2



SECOND FLOOR PLAN No. 2



## THE MT. VERNON—A Typically Modern and Economical Design—

Price Given  
On Enclosed  
Price List

This modest but beautiful home is one of our newest. Its simplicity of form, its cleanliness of lines and its perfect proportions fill all observers with enthusiasm and admiration. It will measure up to its surroundings wherever built. Its choice of three sizes is shown below for the Mt. Vernon, each plan to express the best features of model interiors. Plan 2 is 28' wide and has a depth of 22'. A generous sized living room affords excellent wall space for your furniture. The kitchen arrangement admits the placing of dinette table and chairs. Two conveniently placed bedrooms with four closets and bath complete the plan. Plan 4 is the same size as Plan 2 and is designed for those not wishing to have a basement. A storage or utility room is provided in this arrangement. The largest of the three, Plan 3, is 30x24' and with all the foregoing and added features offers rooms of proportionately larger sizes. The Mt. Vernon is proving to be one of our most popular homes. Write us about it. We will send you detail specifications.

**BUILD  
IT  
YOURSELF**

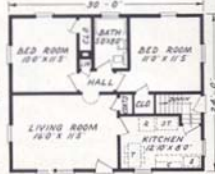
**You Save When You Build The ALADDIN Way  
Because Factory Cutting and Fitting Reduces  
The Labor Cost 30% and Lumber Waste 18%**



PLAN NO. 4



PLAN NO. 2



PLAN NO. 3



## THE BRENTWOOD — A Notable Design —

Price Given  
On Enclosed  
Price List

Here's a home of sunshine, flowers, trees and foliage, one of Aladdin's most notable offerings to home builders. The observer has a desire to stroll up the walk and step into a home that breathes hospitality and charm.

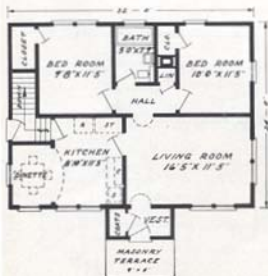
The excellent balance of the exterior is immediately apparent to the observer, the terraced entrance surmounted by a gabled vestibule and flanked by twin mullion windows.

Two sizes are shown below for the Brentwood. Each has

many desirable features and each will furnish the owner with the utmost home satisfaction.

Plan A is 32' x 24' and presents well proportioned rooms of maximum efficiency and convenience. Note alcove dinette with particularly splendid lighting.

Plan C is size 36' x 26'. Altogether the Brentwood fulfills the highest expectation of exacting home-builders. Iron railing on terrace not included. Our facilities and experience are at your service. Write for detail specifications.



PLAN A

QUALITY  
ENDURES  
THROUGH  
YEARS



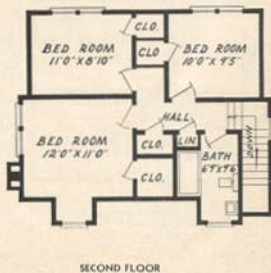
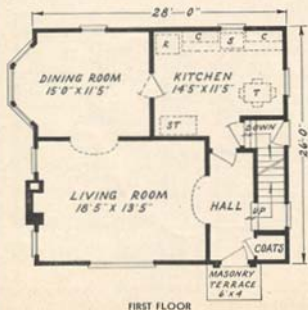
PLAN C



## THE SUMMERSET—Typically Cape Cod—

Price Given  
On Enclosed  
Price List

Beauty and balance distinguish this perfect example of Cape Cod architecture. Thrifty New Englanders evolved a type of home in revolutionary times that matched their well known characteristics of simplicity, directness, economy and common sense. That it is sound architecture is evidenced by its return to popularity on the designing boards of the present day's leading architects. A living room 18' 5" x 13' 5"! It's of a size found in few houses twice as large as the Summerset. A dining room, kitchen and grade cellar entrance complete the perfect accommodation on the first floor. Master's bedroom matches the living room in spaciousness, and thoroughly adequate closet space is provided. Every dollar invested in this home gives magnificent values. Quality is built into every part—Aladdin Certified lumber and Aladdin Knotless finish. Complete detail specifications on request.



# ALADDIN Enters FORTY-SECOND Year of Manufacturing READI-CUT HOMES



*The ALADDIN Organization's Long Experience Means the Perfection of Machine Production, Saving of Labor on the Job and Elimination of Waste of Materials.*

## ALADDIN SYSTEM IS BUILT ON THIS PRINCIPLE

Modern power-driven machines can do BETTER work at a lower cost than hand labor. Then every bit of work that CAN be done by machine SHOULD be so done. The steel worker with a little hack-saw trying to cut and fit the steel girders of the modern skyscrapers should be no more out of place than the modern carpenter cutting sills, joists, and rafters. The skyscraper framework is cut to fit by machines in the steel mills, marked and numbered ready for erection.

The lumber in the Aladdin houses is cut to fit by machines in the Aladdin mills, marked and numbered ready for erection. The steel system is over sixty years old—the Aladdin system over forty years old.

An Aladdin Read-cut Home saves you from twenty to thirty percent in your labor bill because the carpenter does not have to spend his time working out the construction details, and cut all the lumber by hand. Our complete drawings

give him construction details that have been proven the best over a period of over forty years. When building the Aladdin Way, you save all the time used by a carpenter

in measuring, cutting, trying and fitting, because all of this work has been done in our factory by modern machines. A machine cut Aladdin home is better built, stronger and more substantial and it will give you a lifetime of satisfaction.

Standard size materials save waste. We save you eighteen percent in waste because our homes are designed to use standard sizes and lengths. Also all mill work, doors, windows, etc., are manufactured to standard sizes thus making it possible for us to produce them in tremendous quantities. Naturally with the large production and modern factory manufacturing methods, we effect a saving for you on all of the items entering into the construction of your home. All lumber used in Aladdin homes is standard size as adopted by The National Association of Lumber Manufacturers.

**Volume the Magic Word** The first rule in the decalogue of manufacturing is: To lower the cost, divide the several parts of the labor employed into simple, specialized, mechanical operations.

But this won't work without the mystic word.

And that word is "VOLUME!"

Your local contractor may build ten houses a year. Could he afford to invest \$50,000 in machinery to lower his cost on the ten houses twenty per cent?

"Volume" of business makes possible the highly specialized machinery found throughout the Aladdin mills; makes practical the investment of \$10,000 in a single machine which will lower the cost \$5.00 on a house!

But that \$5.00 is multiplied twenty to thirty times on each house and it saves every buyer of an Aladdin from \$100 to \$300 on construction cost alone.

**Quantity Buying** Because of the tremendous amount of building materials we purchase each year, we are in a position to buy at the lowest possible prices. The large quantity purchased makes it possible for us to obtain prices far lower than any company or individual who has a demand for only a few homes each year.

When the finest grades of materials are used, you are assured of the highest kind of an investment in your home. We never, in any case, sacrifice quality for price or profit. Aladdin Certified Lumber is guaranteed to be satisfactory.



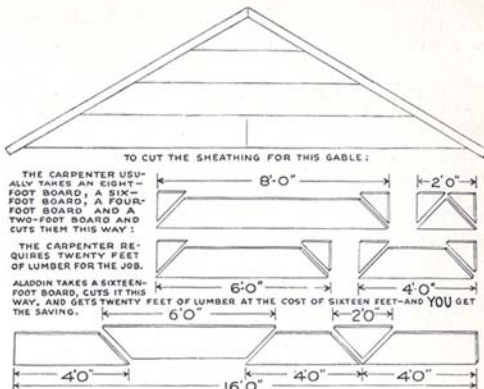
Showing Simple Plan of Laying Out Materials

One of the most amusing remarks made is that the builder of an Aladdin home will lose as much time hunting out his material and finding the right pieces as he will save by the Read-cut System. Any thought about time lost in hunting for pieces will be found untrue when you see the simple system of laying out materials given in our Instruction Book with every home.



## HOW THE ALADDIN READI-CUT SYSTEM SAVES YOU MONEY BY GETTING 20 FT. OF LUMBER FROM A 16 FT. BOARD

An Aladdin Read-cut Home saves you from twenty to thirty percent in your labor bill because the carpenter does not have to spend his time working out the construction details, and cut all the lumber by hand. Our complete drawings give him construction details that have been proven the best over a period of forty-two years.



**REMEMBER THE LUMBER THAT'S WASTED COSTS JUST AS MUCH AS THE LUMBER THAT'S USED. ALADDIN SAVES 18% LUMBER WASTE.**

## Efficient Planning Saves Your Money

Waste can and does influence the cost of everything you buy. This is especially true of home building.

Aladdin proves to you that the Read-cut System will save you about \$30 out of each \$100 labor cost. A study of the above drawing will give you a very clear understanding of the amazing economies of the Aladdin Read-cut System and what it means to you in dollar saving.

## ALADDIN System Gives Control Over Your Costs

Why shouldn't you save these profits, like thousands of other home-builders have been doing through The Aladdin Company for the past forty-two years?

You KNOW there will be no shortage of materials—nothing forgotten. You KNOW you will not be paying for more materials than will be used and that you will save the price of all "short ends" that are wasted by the old system.

You KNOW you will receive high grade lumber, millwork, hardware—Aladdin CERTIFIED materials. You KNOW everything will be on hand when you want it—all in one shipment and all guaranteed by Aladdin. And you KNOW in advance what your house will look like and what it will be in every way.

KNOWING gives you control—mastery of your money, of materials, of labor and of RESULTS.

## Quick Shipment

We can ship any regular home in this catalog within eight days after we receive your order. The average time required for delivery after leaving the factory is from three to five days. We prefer to be given a little more time if convenient to you. All homes and summer cottages are shipped complete at one time in a sealed box car from our mill.

## ALADDIN Service

You receive a scientifically designed home; a scientifically manufactured home; the benefit of buying power, thousands of times greater than your own. You receive the safeguards of our experience. You are guarded against costly extras. You have our help in keeping costs down. You save many days' time. You save costly waste. You receive everything complete for your home in one shipment. You know exactly what your house will look like when completed. You save all architectural fees. You are assured prompt shipment and quick erection. You receive a bona-fide guarantee of complete satisfaction.



AWARDS OF QUALITY

# ALADDIN ORIGINATED THE READI-CUT SYSTEM OF HOME BUILDING



O. E. SOVEREIGN, Gen. Mgr.

THE ALADDIN COMPANY was founded forty-two years ago by W. J. Sovereign and O. E. Sovereign who perfected and established the First Read-cut System of Home Building in the world.

Today, as in the past, the company is still managed and owned by these two brothers. Customers of forty-two years ago may write to The Aladdin Company today and know that the management is unchanged, and that they are writing to and dealing with old friends.

Their vast experience in the wants and needs of homebuilders, in the choice of the best materials for their use, in the preparation and manufacture of the lumber is of tremendous value to every customer of Aladdin. The Sovereign Brothers are ready to give you their personal time and assistance to guard you from the mistakes so often made by inexperienced homebuilders. This service costs you not one cent extra. It is included as a part of every Aladdin transaction.

The Read-cut System as originated by The Aladdin Company has been approved by the United States Government, the Michigan State



W. J. SOVEREIGN, President

Government, and hundreds of big corporations by large purchases of Aladdin Houses. This company manufactured and shipped the first complete read-cut home built in the world.

The Aladdin Company operates mills in Michigan and Oregon, which are the largest lumber markets in the country.

## What You Get When You Buy An ALADDIN House



A careful reading of the following will give you a clear idea of the completeness of materials and equipment which are included in the price of Aladdin Houses.

You also receive our forty-two years of home building experience to guard you against mistakes of any kind.

It has taught us the best construction methods, the best materials to use, the best way to prepare the building plans so every step of erection can be followed even though you have had no previous experience in building. And to complete our service to you, we guarantee that you will receive sufficient of all materials to complete your home according to the plans and specifications.

### Read the Following Carefully:

#### You Receive:

Foundation wall plates cut to fit.  
Foundation Sills cut to fit.  
Floor Joists cut to fit.  
Floor Joist Bridging cut to fit.  
Sub Floor Sheathing cut to fit.  
Wall Studing cut to fit.  
Wall Sheathing cut to fit.  
Partition Scaffolding cut to fit.  
Ceiling Joists cut to fit.  
Rafters cut to fit.  
Roof Sheathing cut to fit.  
Roof Ceiling cut to fit.  
Water Proof Building paper between sills and finished floor.  
Finish Floor Tongued and Grooved.  
Water Proof Building paper between wall sheathing and siding.  
Siding squared ready to fit against casings and outside finish.

Cedar shingles or asbestos shingles instead of siding if preferred.  
Outside finishing lumber cut ready for fitting.  
Crown, bed, cove and quarter round moldings.  
Water table and drip caps for exterior.  
Window frames complete with inside and outside trim.  
Glass in window sash ready to hang.  
Window and door trim casing packed or paper wrapped.  
Door frames complete with inside and outside trim.  
Doors—Interior and Exterior.  
Baseboard and base shoe for all rooms.

For two story houses stairways, treads, risers, stringers, newel posts, balusters, molding, etc. cut to fit—boxed ready for erection.  
Cellar Stairs where shown—all materials cut to fit.  
Nails of proper size.  
Lock sets.  
Door Hinges.  
Double acting door set.  
Metal Door Bumpers.  
Sash Weights.  
Sash Pulleys.  
Sash Cord.  
Sash Locks.  
Sash Lifts.  
Slate surfaced asphalt shingles.  
Valley, hip and ridge flashings as needed.

Paint—three coats. Finish coats any colors desired.  
Turpentine, Putty and Oil.  
Interior stains—one coat—Floor and Interior Woodwork.  
Interior Varnish—two coats—Floor and Interior Woodwork.  
Porch joint, porch flooring, steps, columns, balusters and porch roof sheathing and ceiling cut to fit.  
Foundation plans and foundation instructions.  
Complete set detailed blueprints showing every step of erection.  
Copyrighted book of printed instructions and illustrations describing every step in erecting and completing the house.

# ALADDIN BUILDING ESTIMATES

**EXCAVATION**—Under the heading, "3' Excavation," we give the number of cubic yards of earth necessary to remove in an excavation of that depth. One-third of that amount will be the number of cubic yards in one foot of excavation. If your excavation will be less than three feet or more than three feet you can multiply the number of cubic yards for one foot of excavation by the depth you intend excavating and the resulting figure will give you the number of cubic yards to remove in your particular case. Our figures are based on making the excavation one foot larger each way than the size of the foundation.

**FOUNDATIONS**—Under the heading, "16" Blocks," we give you the number of concrete blocks of that size necessary for a foundation wall 10 blocks high. As concrete blocks are 8 inches high, a 10 block wall is approximately 2 feet high. If a wall of different height is built, divide the quantities by ten and multiply by the number of blocks high your wall is to be built. If a cellar is not being built under your home, a seven foot wall will not be required. It will only be necessary

to carry your foundation down below the frost line. This is seldom more than 2 to 3 feet below ground or grade line and in many localities is considerably less. Should you use 24" blocks the quantity of blocks required will be one-third less. If a poured concrete foundation wall is to be used, you will find below the number of cubic yards of poured concrete required for each home. As the mix differs in every locality, your local mason dealer can give you the quantities of cement, sand and gravel required for this type of foundation and also quote you prices on the necessary materials for the number of cubic yards of poured concrete listed. The figures are based on a wall 8" thick, not including footings.

**PLASTERING SURFACE**—Under this heading we give you the number of square yards of surface in the home to be lathed and plastered, and with all openings included.

**CHIMNEYS**—Chimneys and fireplaces are sometimes shown on our plans to suggest a practical location. Since we do not cut the openings in our homes for them, you can change the location or omit them entirely if preferred. The amount of material required for chimneys is as follows:

One 8" x 8" flue chimney, 30 bricks to each foot of height.  
Two 8" x 8" flue chimney, 50 bricks to each foot of height.  
One 8" x 12" flue chimney, 35 bricks to each foot of height.  
Two 8" x 12" flue chimney, 60 bricks to each foot of height.  
For mortar allow  $\frac{1}{2}$  bbl. cement and  $\frac{1}{2}$  cu. yd. sand for each 1000 bricks.

## It's Easy to Follow ALADDIN Blueprints



FIGURE 4-REAR WALL



FIGURE 7-REAR WALL



FIGURE 8-RIGHT WALL

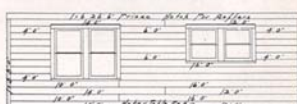


FIGURE 9-RIGHT WALL

NAME OF HOME	Cu. Yds. Excavation 3' Deep	16" Blocks 10 Blocks High	Cu. Yds. Poured Concrete 8" Wall	Sq. Yds. Plastering Surface
Amhurst	123	960	21	703
Brentwood A.	103	885	20	416
Brentwood C.	123	960	21	450
Birewood No. 4.	111	900	21	426
Birewood No. 7.	90	840	19	376
Bristol A-B.	123	990	23	455
Brewster No. 2.	108	930	22	439
Brewster No. 4.	108	930	22	439
Colonial No. 2.	83	758	18	312
Concord.	106	1020	23	624
Ferndale No. 1.	125	1050	23	507
Ferndale No. 2.	135	1080	24	545
Gables A.	100	900	20	378
Gables B.	95	870	19	375
Hamilton No. 1.	106	1020	23	777
Hamilton No. 2.	92	855	19	710
Madison No. 1.	98	915	20	401
Madison No. 2.	115	1035	22	459
Madison No. 3.	118	1050	23	491
Mr. Vernon No. 2.	80	735	18	314
Mr. Vernon No. 3.	93	795	19	350
Mr. Vernon No. 4.	80	735	17	324
Norfolk No. 1.	100	825	19	387
Norfolk No. 3.	25	330	11	387
Palm Springs No. 1.	112	931	22	383
Palm Springs No. 2.	128	980	24	455
Pilgrim No. 2-5.	133	1020	23	500
Pilgrim No. 4.	110	935	22	423
Plymouth No. 2.	81	780	18	689
Plymouth No. 3.	69	720	16	547
Rockport No. 2.	121	960	21	425
Rockport No. 3.	94	795	18	382
Rockport No. 5.	107	1021	24	482
Salem	64	660	17	450
Shelburne No. 2.	126	975	23	680
Summerset	95	795	20	612
Sunshine B.	98	825	20	400
Sunshine D.	85	765	18	330
Sunshine E.	104	855	20	414
Vassar No. 2.	103	885	20	586
Winston No. 1.	115	945	22	398
Winston No. 5.	119	945	22	430
Winthrop	97	826	20	347

**Masonry and Fireplaces**—Chimneys can be located anywhere in the house you like for we do not cut our materials for these openings. If you do not want the fireplace which may be shown in the photograph and floor plan arrangement, you need not build it. We furnish you a foundation plan which shows you exactly how to proceed to build your foundation.

**Plans Can Be Reversed**—Any Aladdin Plan can be furnished reversed. A reversed plan would place all of the rooms on the opposite side of the home from that shown in the catalog plan.

**Room Sizes**—indicated on catalog floor plans are net dimensions between plastered walls. This system gives accurate information for proper placement of furniture and other equipment.

**Special Plans**—The success of the Aladdin System depends to a large extent on the reasonable standardization of designs and material sizes. For this reason we find it impractical to quote on special plans of any kind.

Here we have shown in greatly reduced size, a few figures taken from a set of Aladdin Read-cut House Plans. They show the size, length and position of every piece of material entering into the construction of the home. All materials that need mitering are mitered to the exact length and all you have to do is nail the materials in place.

**WRITE US** If interested in any of the following items—screens, basement windows, extra windows, extra doors, oak flooring or cellar stair addition (if the plan you want has no cellar stair) we will be glad to quote you prices. Square cased arches or round arches can be furnished wherever arches are designated in plan.

# UNTO THE THIRD GENERATION

## GRANDFATHER SON and GRANDSON

### EACH STARTS HIS MARRIED LIFE IN HIS OWN NEW ALADDIN HOME

Aladdin home owners who built and have lived in their Aladdins for over thirty years here testify unsolicited to their satisfaction and happiness. AND their sons and their son's sons are urged to come to Aladdin for satisfaction, safety and economy.

Dear Sirs:  
I am writing to request that you send me one of your catalogs. If you will look through your files you will note that in 1914 we purchased one of your houses, the "Georgian No. 2." We went to housekeeping in it when we were married Oct. 24, 1914. My brother, Laurence Huddy, also purchased your "Stanhope." Now, one of my twin daughters and her husband are interested in building, too.  
Very truly yours, Mrs. R. P. Dell

Sirs:  
Will you please send a catalog of homes as soon as possible. Thanks.  
Yours truly, Mrs. V. H. Barton  
P.S. I built an Aladdin home in Oceana about 25 years ago and now my son is planning on building and would like to see your catalog.

Dear Sirs:  
I am the lady who built an Aladdin cottage on Cape Cod and it withstood the hurricane. I would like one of your new catalogs.  
Sincerely, Mrs. Jessie M. McLean  
P.S. I have a son who might be interested in building in near future as he has just purchased 14 acres out of Ft. Wayne, Ind.  
Westwood, N. J.

Gentlemen:  
Please send us your latest catalog and description of homes.  
We have been living in one of your homes for 25 years now and we expect to sell it and build a new one. Please rush and oblige.  
Yours truly, John T. Isch

Dear Sirs: Edmonds, Wash.  
Please send me your latest catalog of your Ready-Cut Homes, and also any other information you can give me on the possibilities of immediate delivery.  
As you may remember, my father purchased one of your homes in Juneau, Alaska about 15 years ago, and it is still in good condition.  
Truly yours, James Ramsay  
Messrs: Ramsey, Ind.  
Please send me your latest catalog of Aladdin Homes.  
I have erected several of your houses in the past and find they are good material and go up good.  
Respectfully, C. W. Patterson

Dear Sirs:  
I did some business with you back in 1914 thru a third party who did the building while I furnished the funds, and now I am interested in a house for myself. So would like one of your up-to-date books on houses and plans, also prices.  
Very respectfully, Joseph Griffin

Dear Sirs:  
East Braintree 84, Mass.  
I bought one of these homes of you in 1916, "Emerald" Style and I am more proud of it than ever.  
I would very much like one of your catalogs. I recommended some folks to you the other day.  
Yours very truly, Mrs. E. M. Linde Taylor

Gentlemen:  
Utica, N. Y.  
Some 27 years ago I bought my home "The Brentwood" and still live in it. Send me catalog on latest homes, also prices.  
Yours sincerely, Ben D. Smith

Dear Sirs:  
Huntington, W. Va.  
My father bought a house from you in 1913. If you are still in business would like to have a catalog on small homes.  
Yours truly, H. B. Mackay

Gentlemen:  
West Concord, Mass.  
Please send me a catalog of your houses. We bought 12 or 13 Aladdin Homes in 1912-15.  
Yours truly, F. E. Marble

Dear Sirs:  
Knoxville, Tenn.  
Will you please mail me a catalog. I have bought 2 houses from your company and was pleased with them and want to get some more from your company.  
Yours truly, E. Barsbill

Gentlemen:  
Bridgeton, N. J.  
We are writing to get information you could give regarding the Aladdin Ready-cut Homes.  
My grandfather had one of these homes some years ago and was very pleased so we decided to try one.  
Yours truly, Miss V. J. Keating

Dear Sirs:  
Culbertson, Montana  
About 25 years ago we got a ready-cut house from your company. It has been so satisfactory that when it has now come time to build in another place, we wanted another Aladdin house. We would like to have one of your catalogs.  
Sincerely yours, Mrs. A. C. Petersen

Gentlemen:  
Ogdensburg, N. Y.  
In 1925 my Dad purchased a home from you and in the passing years it has met every test. I have just returned from the Pacific and am interested in building a new home for my family. Would you kindly send me your catalog.  
Respectfully yours, Francis G. Mason

Dear Sirs:  
Medicine Lodge, Kans.  
As I am in the market for another house and having built one of your ready-cut houses, I naturally turn to you for another as I think I saved at least 40% by so doing. Would like to have another set of building plans and prices from you so I can see what I can do about building another ready-cut house. Thanking you for past favors, I am  
Yours truly, Chas. L. Moorman

Gentlemen:  
Grand Island, N. Y.  
Kindly mail me catalog with prices and delivery on your ready-cut houses. I built one of your houses over 30 years ago. Did most of the erection myself and was quite pleased with the job, materials and all.  
Yours truly, F. B. Fadum  
Lewiston, Florida—Jan. 23, 1948  
The Aladdin Company  
Bay City, Michigan  
Dear Sirs:  
Please send me your Catalog. One of your houses erected in 1926 has withstood all our hurricanes and remains a fine home today. It satisfies us in every way.  
Yours truly,  
G. D. Rackstraw

Dear Sirs:  
Springfield, Vt.  
I am writing to inquire if it would be possible to buy another ready-cut house very soon. We built a Victory ready-cut bungalow in the city in 1916 at Monmouth, N. Y. We have just sold that and want to build another ready-cut house as we were very much pleased with that one. Have you a new catalog?  
Yours truly,  
Mr. and Mrs. Frank E. Barber

Dear Sirs:  
Youngstown, Ohio  
Please send me your illustrated catalog at an early date. For your information we constructed 57 of your houses in or about the year 1920.  
Yours very truly, Robert M. Kelly Jr.

Dear Sirs:  
Sandwich, Ill.  
My husband's grandfather bought a ready-cut cottage from you. He lived in it until recently and was very well pleased with it.  
Now my husband and I would appreciate it if you would send us full and complete information on your ready-cut houses.  
Sincerely, Mrs. E. J. Cook II

Gentlemen:  
Readenton, Fla.  
Enclosed find 10c for your catalog of your ready-cut houses.  
Incidentally I purchased one of your houses 20 years ago and it is still as good as new.  
Very truly yours, E. G. Sherley

Dear Mr. Aladdin:  
Clinton, Mo.  
I am writing you for catalog and price list on your ready-cut homes. In 1919 I bought a house from you called the "Rochester" and I like it just fine and am well pleased with my home. I may leave my farm, if I do I may have to build me a home and I want it to be an Aladdin Home, too.  
Yours sincerely, L. A. Bramell

Dear Aladdin People:  
Ennismith, Md.  
I have a grandson who has been overseas for two years. Now he is home and married and would like to have a home so I am writing for a book.  
I built an Aladdin home about 22 years ago. It was a "Hereford." It was a beautiful little home. I have been a widow now for 10 years. I hope to hear from you soon.  
Yours truly, Mrs. David N. Myers  
Mt. Dora, Florida

Dear Sirs:  
Will you kindly mail to me at once, one of your catalogs. I was a customer of yours in 1917, 1922 and I think 1927 at Riverdale, N. Y. At present I am here in Florida (retired), and am looking for a small home.  
Yours very truly, John W. Phillips

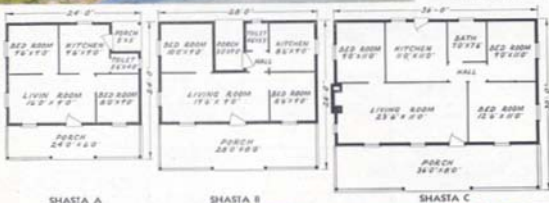
## QUALITY ENDURES THROUGH YEARS





## SUMMER COTTAGES THE SHASTA

A choice of three sizes of the Shasta Summer Cottage is shown below—each with the maximum facilities and conveniences possible for its size. All have a generous porch, which will make a splendid summer living room. The Shasta has been a popular and favorite cottage for many years and will be found to be genuinely livable wherever placed. Shasta A is 24 x 24 feet over all, suitable for a modest family of four. Shasta B is somewhat larger and with the same accommodations. Shasta C provides for three bedrooms.



Specifications for Summer Cottages given on price list.

SHASTA A

SHASTA B

SHASTA C

## THE ASBURY A

It would be hard to exceed this little gem of a cottage for its size and price. It is of course built as strong and of the same high quality as our largest houses. We will be glad to give you complete information and specifications if you will write us. Summer Cottage Specifications are given on the price list.

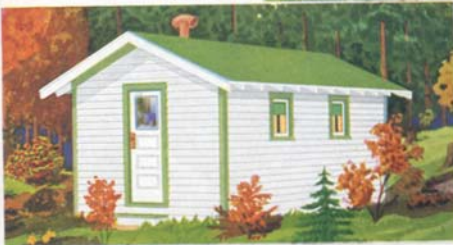


ASBURY A



## THE HUNTER'S LODGE

The Hunter's Lodge answers the demand for a low cost camp or "shack" in the woods. Two men can start work on the erection of the Hunter's Lodge in the morning and sleep in the completed building at night. It is a one room building and can be purchased in your choice of three sizes. The Hunter's Lodge No. 1 is 12' x 16' in size. The Hunter's Lodge No. 2 is 12' x 20' in size. No. 3, 16' x 20'. Bunks can be built up across the rear or sides or you can use double decked steel bunks of cots. Due to the fact that the heavy, close fitting siding is furnished with the Hunter's Lodge, you will find the building easy to heat in the late fall months. The Hunter's Lodge contains a total of four 18' x 24' swinging casement windows, two being arranged in each side wall. A door with glass in the upper section is furnished at the front.



HUNTER'S LODGE



# SUMMER COTTAGES THE OCEAN PARK

The Ocean Park is a unique design and something out of the ordinary in summer cottage architecture. Some fine features are incorporated in the three Ocean Park plan arrangements that will attract folks desiring the utmost comfort in a summer home. The main roof extends over the porch in each design, giving greater ventilation area inside and a place for storage as the porch is ceiled overhead. Plan A is a two bedroom arrangement, and is priced astonishingly low. Plan No. B is the same width but contains a rear porch and rooms of larger proportions. The Plan No. C arrangement contains the inset porch and also two closets and a rear room usable as either a bath room or a third bedroom. Entrance from the rear is made through the porch and hall without going through the kitchen. Wide eaves are a desirable feature of all summer cottages, affording greater protection from the sun and consequently a cooler interior. Write us about your ideas. Specifications are given on our price list.

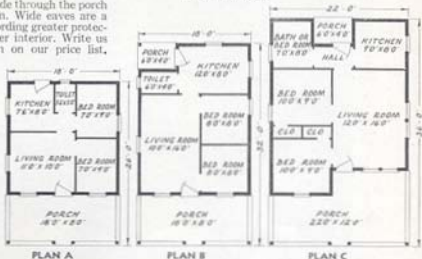


THE OCEAN PARK

## BUILD IT YOURSELF

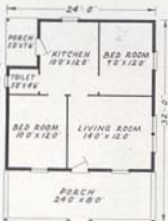
Our price includes not only the materials but a large proportion of the labor—every piece of lumber in Aladdin Cottages is cut in our mills to its exact length, breadth and thickness—ready to nail in place on arrival.

All material for the erection and completion of your Aladdin Cottage will be on the ground at one time. Nothing forgotten nor overlooked. Summer cottages are usually built at places some distance from supply dealers. Trips back and forth are expensive. Your Aladdin Cottage arrives at destination complete—all lumber ready to nail in place—all windows, glass, doors, roofing, locks, nails, hinges, paint—in fact, everything.



## SEAFORD A

The Seaford design incorporates the ever popular hip roof which projects over the front porch affording a living room 24 x 8 feet in extent. The interior is most attractive and convenient and rooms are of generous proportions. Write for further details. Specifications for summer cottages are given on price list.



SHOREVIEW A



SEAFORD A

## SHOREVIEW A

The Shoreview is designed for a narrow lot, being 18 x 30 feet over all. Note size of living room. This has long been a popular and satisfactory summer home and has been built on literally hundreds of lakes and streams. Write us for further facts.



# ALADDIN SUMMER COTTAGES SHOWN ON PAGES 28, 29 and 30

**I**N presenting this line of Aladdin Summer Cottages we have selected this year only those cottages which have proved themselves thoroughly practical during the past years. We have sold thousands of these designs. They can be found nestling on the banks of a thousand lakes and rivers throughout the entire country.

Three things are chiefly essential in a summer cottage—protection from the elements, a generous porch and plenty of light and air. In each cottage shown these things have been borne in mind. But always we have kept cost down. Strength has at no time been sacrificed, nor has weather tightness been overlooked. Every cottage is strong, tight and substantially built of the best materials.

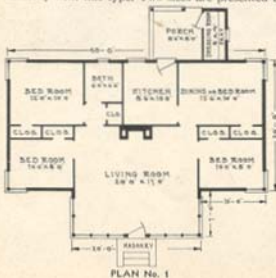
One feature in connection with the erection of your Aladdin summer cottage is of especial value. You will have every bit of material needed for the erection and **COMPLETION** of your cottage **ON THE GROUND AT ONE TIME**. Nothing will be forgotten or overlooked. Summer cottages are usually built at places some distance from supply dealers. Trips back and forth are expensive, in both time and money. Your Aladdin cottage arrives at destination **COMPLETE**. The lumber is all there, ready to nail in place—the windows, glass, doors, roofing, locks, nails, hinges, paint—in fact everything. Many of our customers build their Aladdin Summer Cottage themselves. Greater pride of ownership naturally results. Write for further details, or submit your own floor plan arrangement for any of these designs and we will be glad to give you a price on your plan.



## THE BAR HARBOR—An Ultra Modern Type — Price Given On Enclosed Price List

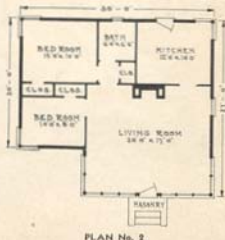
Extremely modern, but not "modernistic," the Bar Harbor presents the latest thought in summer home design. Its beauty evolves from its simplicity of form and line, yet it is as rugged as the Maine coast from where it draws its name.

Horizontal lines of the siding are accentuated by similar lines in the windows and door. The sturdy roof is in perfect harmony with this type. Two sizes are presented from which to choose.



The projecting part of the living room is entirely enclosed with full casement windows. It opens up perfectly as a porch, yet can be partially or fully enclosed in inclement weather. By this arrangement the livable spaciousness of the living room is almost doubled.

Plan No. 2 offers two bedrooms while Plan No. 1 has optional four bedrooms or three bedrooms and dining room. Should you choose Plan No. 2 and desire the rear porch and dressing room we will be glad to quote price for this latter feature.





Modern equipment and facilities in the kitchen and bathrooms are a joy to home-makers. Illustrated here are two splendid examples of present day efficiency and beauty as installed by some of Aladdin homebuilders.

**BUILD IT  
YOURSELF**

**ALADDIN**

**READI-  
CUT**

**GARAGES**

Aladdin garages are made of only the best materials and when completed are sure to please the most critical person. The lumber is entirely cut-to-fit, making erection a short and easy task. Detailed drawings show where each piece of lumber is to be placed and nailed. Aladdin offers the perfect system of buying and building garages. Safe delivery and no shortages guaranteed.

**Specifications:** Materials of the same high quality as used in Aladdin houses. Sills 4" x 4", studding 2" x 4" on 24-inch centers. Drop siding for side walls, 2" x 4" rafters

on 24-inch centers, roof sheathing laid tight. Best quality green, slate-surfaced, roll roofing. Slate surfaced asphalt strip shingles can be had in place of roll roofing at prices quoted. See Price List. Doors, eight feet wide and seven and one-half feet high. Windows furnished when shown in illustration are swinging casements. Hardware for doors and windows, nails and two coats of paint for exterior. Materials Read-i-Cut. Drawings and instructions for building. All garages furnished without floors as most owners prefer to build floors of cinders or concrete.



**THE MERCURY ONE CAR**

No. 1, 12 ft. wide, 18 ft. deep.  
No. 2, 12 ft. wide, 20 ft. deep.



**THE MERCURY TWO CAR**

No. 3, 18 ft. wide, 20 ft. deep.  
No. 4, 20 ft. wide, 20 ft. deep.

**Prices Given  
On Enclosed  
Price List**

**THE ALADDIN COMPANY**

FOUNDED 1906

By

W. J. and O. E. SOVEREIGN

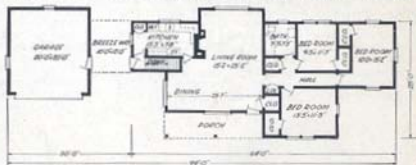
HOME OFFICE and MILLS: BAY CITY, MICHIGAN

CATALOGUE No. 53

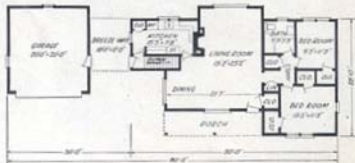


## THE PALM SPRINGS—A Typical Western Ranch House

SHOWN HERE ARE  
TWO PLANS EACH  
WITH PORCH AND  
BREEZEWAY AND ALSO  
A THIRD BEDROOM  
ADDITION



PLAN No. 1



PLAN No. 2

Present day homebuilders have shown a tremendous interest in Western Ranch House Architecture. Its attractions are many and by all means sensible. It is a type that is suitable for all climates, east or west, north or south. It is featured by a low roof, wide eaves, a covered porch and unusual spaciousness. The Palm Springs plan incorporates all these features harmoniously and in good proportion.

The Breezeway connecting the house proper and garage is used as a shady porch, an outdoor dining place and a covered space for garden furniture and children's playthings. Of course it is excellent protection to reach the garage in inclement weather. Two plans are illustrated above, each of almost identical exterior appearance. Cellar stairs may be omitted from either plan if no basement is desired. Our plans contemplate concrete floor for both the garage and breezeway. We furnish no masonry. Send for detail specifications.

**QUALITY ENDURES THROUGH THE YEARS — READ PAGE 27**

### INDEX

House	Page No.	House	Page No.	House	Page No.	House	Page No.	House	Page No.
Amhurst	9	Concord	7	Hamilton	19	Plymouth	8	Sunshine	18
Birchwood	16	Estimate	26	Madison	12	Rockport	2	Testimonials	27
Brentwood	21	Ferndale	11	Mt. Vernon	20	Salem	15	Vassar	13
Brewster	3	Gables	5	Norfolk	10	Shelburne	17	Winston	6
Bristol	14	Garages	21	Palm Springs	32	Summer	22	Winthrop	15
Colonial	16	General Information	33	Pilgrim	4	Summer Cottages	28		