



Sold By The
**GOLDEN
RULE**

ALADDIN

READI-CUT HOMES





ALUMINUM PRIMING IS *Better* PRIMING

TRADE MARK



REG. U. S. PAT. OFF.

ALBRON

THE ALADDIN COMPANY

Founded 1906

By W. J. and O. E. SOVEREIGN
HOME OFFICES AND MILLS
BAY CITY, MICHIGAN

ALADDIN ALUMINUM PROTECTED LUMBER

Every ALADDIN Home is now
protected with a metal coat of
ALUMINUM

This Adds Years to the Life of Your Home

One of Aladdin's greatest recent advancements in Quality Construction Methods is the furnishing of a coat of aluminum for all material subject to weather. This coat of high quality aluminum priming paint is furnished for all siding and outside finish exposed to the weather. Your home will have a metal coat of protection on all exterior surfaces. This forms the strongest known protection against the ravages of weather, dampness, age or other damage. It also forms a perfect undercoat for our high quality paint. A paint job is only as good as its primer. It gives the most perfect protection to our certified and guaranteed knotless siding and knotless outside finish.

ALADDIN Homes Lead in Value, Scientific Accomplishment and True Distinction.

To own a home, having the protection, value and benefits of the latest scientific accomplishments, is a matter of pride and satisfaction.

To be one of the first in your community to own such a home is a distinction and is evidence of leadership.

The silvery flash of the Aluminum metal coat, as your home is under construction, gives notice to the world that here is a home different, sounder and more distinctive than any home around you, regardless of size. It gives notice that here is a home whose every board, which is exposed to the weather, is covered with a coat of metal protection.

The millions of tiny Aluminum flakes, by leaning together, form a continuous coat of metal protection. They keep out moisture and add years of life to the surface to which they are applied.

Copper flashing is furnished for use under the drip cap on all outside doors and windows. Copper valley flashing when required is used when wood shingles are furnished for the roof.

IMPERISHABLE COPPER and ALU- MINUM Guard Your ALADDIN Home Against the Ravages of Time and Weather.

BRANCH OFFICES AND MILLS
PORTLAND, OREGON and TORONTO, CAN.

CATALOG NO. 49

All Rights Reserved
Copyright 1937

What Our 31 Years Experience Means to You When Building a New Home



O. E. SOVEREIGN, Gen. Mgr.

THE ALADDIN COMPANY was started thirty-one years ago by W. J. Sovereign and O. E. Sovereign who perfected and established the First Read-cut System of Home Building in the world.

Today, as in the past, the company is still managed and owned by these two brothers. Customers of thirty-one years ago may write to The Aladdin Company today and know that the management is unchanged, and that they are writing to and dealing with old friends.

Their vast experience in the wants and needs of homebuilders, in the choice of the best materials for their use, in the preparation and manufacture of the lumber is of tremendous value to every customer of Aladdin. The Sovereign Brothers are ready to give you their personal time and assistance to guard you from the mistakes so often made by inexperienced homebuilders. This service costs you not one cent extra. It is included as a part of every Aladdin transaction.

The Read-cut System as originated by The Aladdin Company has been approved by the United States Government, the Michigan State

Government, and hundreds of big corporations by large purchases of Aladdin Houses. This company manufactured and shipped the first complete read-cut home built in the world.

The Aladdin Company owns and operates mills in Michigan and Oregon, which are the largest lumber markets in the country.



W. J. SOVEREIGN, President

What You Get When You Buy An ALADDIN House



A careful reading of the following will give you a clear idea of the completeness of materials and equipment which are included in the price of Aladdin Houses.

You also receive our thirty-one years of home building experience to guard you against mistakes of any kind.

It has taught us the best construction methods, the best materials to use, the best way to prepare the building plans so every step of erection can be followed even though you have had no previous experience in building. And to complete our service to you, we pay the freight and guarantee that you will receive sufficient of all materials to complete your home according to the plans and specifications.

Read the Following Carefully: You Receive:

Foundation Sills cut to fit.
Floor Joists cut to fit.
Sub Floor Sheathing cut to fit.
Wall Sheathing cut to fit.
Partition Studing cut to fit.
Ceiling Joists cut to fit.
Rafters cut to fit.
Roof Sheathing cut to fit.
Roof Ceiling cut to fit.
Building paper between sub and finished floor.
Finish Floor 2 1/2" Tongued and Grooved.
Building paper between wall sheathing and siding.
Siding splayed ready to fit against casings and outside finish.
Cedar shingles instead of siding if preferred.

Outside finishing lumber cut ready for fitting.
Crown, bed, cove and quarter round moldings.
Water table and drip caps for exterior.
Window frames complete with inside and outside trim.
Glass in window sash ready to hang.
Door frames complete with inside and outside trim.
Doors mortised ready to receive lock sets in cartons.
Baseboard and base shoe for all rooms.
For two story homes stairways, treads, risers, stringers, newel posts, balusters, molding, etc. cut to fit—board ready for erection.

Cellar Stairs where shown—all materials cut to fit.
Entrance steps cut to fit.
Sills of proper size.
Mortised lock sets.
Door Hinges.
Double acting door set.
Metal Door Bumpers.
Sash Weights.
Sash Pulleys.
Sash Cord.
Sash Locks.
Sash Lifts.
Copper for window and door flashing.
Slate surfaced roll roofing or slate surfaced shingles.
Valley, hip and ridge flashings as needed.
Paint—three coats.

Under coat aluminum paint.
Other coats any colors desired.
Turpentine.
Putty.
Interior Stains.
Interior Varnish.
Porch joint, porch flooring, steps, columns, balusters and porch roof sheathing and ceiling cut to fit.
Foundation plans and foundation instructions.
Complete set detailed blueprints showing every step of erection.
Copyrighted book of printed instructions and illustrations describing every step in erecting and completing the house.

*"Quality is remembered long
after price is forgotten"*

No Quality Can Exceed in Value ALADDIN'S Famous DOLLAR-A-KNOT Lumber

A new standard of lumber quality has been given to the world by Aladdin's famous "Dollar-A-Knot" guaranty.

The "good enough" lumber grades, the "anything will do" grades and the multitude of substitutions for clear, knotless lumber have been shown up.

You cannot be expected to understand the complications of lumber associations' grading rules; how many circles, hearts, rings and barks make a good log nor how many knots, spots, pitch pockets or worm holes there will be to a board.

There are none of these defects in your dollar, and there should be none in what you trade your dollar for.

I'll Pay \$1.00 for Every Knot

I'll pay \$1.00 for every knot any customer can find in our Red Cedar or Redwood Siding. I stand ready to prove to you in this way that the lumber in Aladdin Ready-Cut Houses is higher in grade throughout than is regularly carried by any seller of lumber in America. Further, we guarantee that you will receive clear and knotless siding, clear and knotless flooring and clear and knotless interior finish for every Aladdin Dwelling House.

O. E. Sovereign, Gen. Mgr.
The Aladdin Company

Knotless Means Just What It Says

"A-Dollar-A-Knot." Could any guarantee be plainer or more forceful or more effective. You know a knot when you see it and you know it makes a board less valuable. And when we guarantee Aladdin lumber to be knotless, or guarantee "A-Dollar-A-Knot" for our red cedar or redwood siding, you know that your lumber is going to be the very highest grade taken from the forest.

Golden Rule Service

Every tree has some clear lumber in it. It's the best part of the tree. It is the purest part of the product. Aladdin houses are built on the highest quality and all exposed lumber is taken from the best part of the tree. Our framing lumber is straight, well seasoned and sound. Aladdin houses are built on highest quality, and Golden Rule service to the customer. Aladdin has commandeered the knotless parts of the finest trees—the unsurpassed quality of defectless lumber.

ALADDIN'S MATCHLESS GUARANTY

What Induces Us to Supply such Matchless Quality.

Aladdin believes the modest home merits the same goodness as the mansion. It should be built of material to last as long as the biggest homes. We intend to nail Aladdin quality on the highest attainable pinnacle and keep it there.

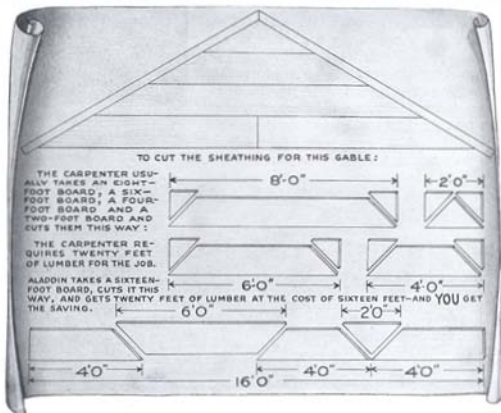
While these are excellent reasons for the careful, thinking home buyer, the real undebatable reason is summed up in the goodness, soundness and the thoroughness of the quality of Aladdin Houses.

The Service Aladdin Offers

You receive a scientifically designed home; a scientifically manufactured home; the benefit of buying power, thousands of times greater than your own. You receive the safeguards of our experience. You are guarded against costly extras. You have our help in keeping costs down. You save many days time. You save costly waste. You receive everything complete for your home in one shipment. You know exactly what your house will look like when completed. You save all architectural fees. You are assured prompt shipment and quick erection. You receive a bona-fide guarantee of complete satisfaction.



How the ALADDIN REDI-CUT System Saves You Money By Getting Twenty Feet of Lumber from a Sixteen Foot Board



Remember that the Lumber that's Wasted Costs You Just as Much as the Lumber that's Used.
ALADDIN Saves 18% Lumber Waste.

FACTORY CUTTING AND FITTING—SAVES LABOR

An Aladdin REDI-cut Home saves you from thirty to forty percent in your labor bill because the carpenter does not have to spend his time working out the construction details, and cut all the lumber by hand. Our complete drawings give him construction details that have been proven the best over a period of thirty years. When building the Aladdin Way, you save all the time used by a carpenter in measuring, cutting, trying and fitting, because all of this work has been done in our factory by modern machines. A machine cut Aladdin home is better built, stronger and more substantial and it will give you a lifetime of satisfaction.



QUANTITY BUYING

Because of the tremendous amount of building materials we purchase each year, we are in a position to buy at the lowest possible prices. The large quantity purchased makes it possible for us to obtain prices far lower than any company or individual who has a demand for only a few homes each year.

When the finest grades of materials are used, you are assured of the highest kind of an investment in your home. We never, in any case, sacrifice quality for price or profit. Aladdin Certified Lumber is guaranteed to be satisfactory.

STANDARD SIZE MATERIALS SAVE WASTE

We save you eighteen percent in waste because our homes are designed to use standard sizes and lengths. Also all mill work, doors, windows, etc., are manufactured to standard sizes thus making it possible for us to produce them in tremendous quantities. Naturally with the large production and modern factory manufacturing methods, we effect a saving for you on all of the items entering into the construction of your home. All lumber used in Aladdin homes is a standard size as adopted by The National Association of Lumber Manufacturers.

Why Some Lumber Dealers And Contractors Talk Against Readi-Cut Houses



T'S the simplest reason in the world. They have no chance to make a profit on the house you buy from The Aladdin Company. You keep the profit in your own pocket that you would ordinarily pay to them.

When the local lumber dealer says, "Don't buy your lumber out of town," ask him where he buys the lumber he wants to sell you. You see he buys his lumber up here and the only money that stays in your town is his profit. Many contractors don't like readi-cut houses because they lower labor costs about one-third. They, therefore, make less money building one.



Showing Simple Plan of Laying Out Materials

One of the most amusing remarks made is that the builder of an Aladdin home will lose as much time hunting out his material and finding the right pieces as he will save by the Readi-cut System. Any thought about time lost in hunting for pieces will be found untrue when you see the simple system of laying out materials given in our Instruction Book with every home.

VOLUME—THE MAGIC WORD

The first rule in the decalogue of manufacturing is: **To lower the cost, divide the several parts of the labor employed into simple, specialized, mechanical operations.**

But this won't work without the mystic word. And that word is "VOLUME!"

Your local contractor may build ten houses a year. Could he afford to invest \$50,000 in one machine to lower his cost on the ten houses twenty per cent?

"Volume" of business makes possible the

highly specialized machinery found throughout the Aladdin mills; makes practicable the investment of \$10,000 in a single machine which will lower the cost \$5.00 on a house!

But that \$5.00 is multiplied twenty to thirty times on each house and it saves every buyer from \$100 to \$200 on construction cost alone.

ALADDIN FIRE STOP CONSTRUCTION

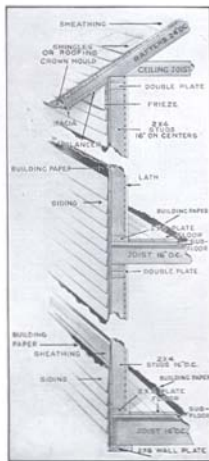
Aladdin fire stop construction is recommended by The Fire Insurance Companies and is used in all Aladdin homes. By referring to the sketch at the right, you will readily understand the advantages in our fire stop construction. The studs do not run from the foundation wall up to the attic. By using 2" x 4" plates, drafts are eliminated and fire cannot run up thru side walls.

MASONRY, CHIMNEYS and FIREPLACES

Chimneys can be located anywhere in the house you like for we do not cut our materials for these openings. If you do not want the fireplace which may be shown in the photograph and floor plan arrangement, you need not build it. Brick, stone, cement and plaster can be had in your locality as cheaply as we could furnish it. We furnish you a foundation plan which shows you exactly how to proceed to build your foundation. Any of our homes can be built on a pier or post foundation if desired.

PLANS CAN BE REVERSED

Any Aladdin Plan can be furnished reversed. A reversed plan would place all of the rooms on the opposite side of the home from that shown in the catalog plan. In a reversed plan the rooms now on the right hand side would be on the left hand side and those on the left hand side would be on the right hand side.



Aladdin Fire Stop Construction

Here Are 5 Different Ways You Can Pay for Your Home

1—CASH WITH ORDER.

A two percent discount will be allowed for full cash with order. Just send your check, bank draft, postal or express money order with your order.

2—PART CASH—BALANCE C. O. D.

If you cannot send us the full cash with order, but will have the money ready when your materials arrive, send us a deposit of one-quarter or twenty-five percent and you can pay the balance thru your bank when the materials arrive. No discount is allowed under this plan.

3—DEPOSIT MONEY IN YOUR LOCAL BANK.

When you have your order made out and know what the total is, deposit this amount in your local bank. Have your banker write us stating that amount will be sent us when your materials arrive, or if you wish to inspect the materials, his letter should state that the payment will be made five days after the materials arrive. We guarantee the quality, quantity and the safe arrival of all materials to your railroad station.

4—FEDERAL HOUSING ADMINISTRATION BANK OR BUILDING AND LOAN.

If you are planning to finance your home thru a Federal Housing Administration Insured Mortgage, or a straight bank loan, first interview your local bank cashier or building and loan secretary. Show him the catalog photograph, floor plan and specifications, of the home selected. If your property qualifies for a loan, he will then assist you in filing your application. We will cooperate by furnishing the necessary filing plans on request, for a small deposit against your order. We will accept payment for Aladdin materials in accordance with the regulations prescribed by the loaning institution or The Federal Housing Administration district office.

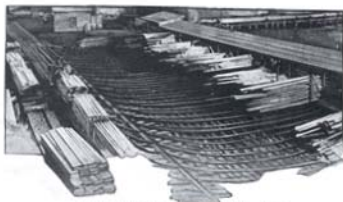
5—FIRE INSURANCE LOSSES.

If your home has burned, and you do not wish to wait for your money from the insurance company, we will ship your home immediately if you will get a letter from your insurance company to The Aladdin Company agreeing to pay us for your materials when your insurance money is available.

ALADDIN'S Service to the Homebuilder

ARCHITECTURAL PLAN SERVICE

This catalog contains plans and designs that are the best that home planning experts and building engineers know how to design. In our plans every inch of available floor space is used to advantage. Because we standardize on the homes shown in our catalog, we can make hundreds of blueprints from one set of drawings, thus making it possible for us to give you this plan service absolutely free with your home. Should the design you select require slight changes, we will, if practical to do so, make them for you at actual cost.



Loading Yard of the ALADDIN Mill Railroad that Transports Lumber from the Yards to the Mill

QUICK SHIPMENT

We can ship any regular home in this catalog within five days after we receive your order. The average time required for delivery after leaving the factory is from three to five days. We prefer to be given a little more time if convenient to you.

COMPLETE IN ONE CAR

All homes and summer cottages are shipped complete at one time in a sealed box car from our mill at Bay City, Michigan, or Portland, Oregon, whichever is nearest to you. We send complete instructions for unloading the car so everything can be placed in convenient piles on your lot.



LATEST METHODS in Home Building

*Gone Are the Ancient Hand-Saw Ways
of Building Homes*

**Alert Home Builders Profit by Newest,
Up-to-the-Minute Construction Efficiency**

READ HERE HOW TO CONTROL YOUR BUILDING COSTS

WASTE can and does influence the cost of everything you buy. This is especially true of home building.

Waste consumes your dollars and gives nothing in return. Aladdin proves to you that the Read-i-cut System will save about \$18 out of each \$100 on your lumber costs.

Aladdin proves to you that the Read-i-cut System will save you about \$30 out of each \$100 labor cost.

When the customer buys direct from the manufacturer there are no middlemen's cost and profits in the price he pays.

You can buy your house direct from the manufacturer. You can save the costs and profits of middlemen. You can save from \$200 to \$1,000 on the materials. This is your good money that would otherwise go into the pockets of middlemen.

Why shouldn't you save these profits, like thousands of other homebuilders have been doing through The Aladdin Company for the past thirty years?

You KNOW in advance what the materials for your house will cost you. You KNOW there will be no shortage of materials—nothing forgotten. You KNOW you will not be paying for more materials than will be used and that you will save the price of all "short ends" that are wasted by the old system.

You KNOW you will receive high grade lumber, millwork, hardware—Aladdin CERTIFIED materials. You KNOW everything

will be on hand when you want it—all in one shipment and all guaranteed by Aladdin. And you KNOW in advance what your house will look like and what it will be in every way.

KNOWING gives you control—mastery of your money, of materials, of labor and of RESULTS.

Buying an Aladdin Home is the safest, easiest and wisest way to build.

Aladdin houses are sold from this catalog and built in every State in the Union. Varying weather conditions and the personal needs of the builder can easily be met by us with such changes in our specifications as you may wish.

ALADDIN Service Department

Aladdin Service Department will assist you with color suggestions for decorating your home both outside and inside. Write us about it.



Interior on left shows our attractive Virginia home while that on the right illustrates our Madison.





THE MADISON — A True American Home —

Price Given
On Enclosed
Price List

And We Pay
The Freight

It would be hard to find a more charming home than the Madison. The roof lines are especially well proportioned. Many letters have been received from enthusiastic owners of this lovely home. It can be purchased in your choice of three different sizes and plan arrangements. The prices quoted are for siding or shingles on the exterior. If you wish to use shingles on the outside walls as shown in the illustration, advise us when ordering. An interior view of the Madison is shown at the bottom of Page 8. With the Madison home you receive 6" x 8" built-up girders, 2" x 8" floor joists on 16" centers and 2" x 6" rafters on 24" centers. Ceiling height 8'6". The roof has a one-third pitch. Asphalt strip shingles are furnished for the roof at the quoted prices. Complete detail specifications mailed on request.

With all Madison plans we have arranged for a vestibule at the front giving space for coats as shown in plans below. A French door is furnished between the living room and vestibule and the outside door is a circle top door same as we show for our Stratford and University homes. This vestibule arrangement is included in the prices quoted for the Madison home.

The Construction Used in an ALADDIN HOME Is the Same as That Used in the Best Architect-Designed, Contractor-Built House Erected Anywhere



PLAN B

Plan "B," a perfect two bedroom arrangement that will go on a 40-foot lot. Big value for every invested dollar is surely represented here.



PLAN C

Plan "C" is size 36 x 32 feet over all. A wonderful 22-foot living room, and large dining room feature this plan.

—
SAVE
WASTE
—
SAVE
TIME
—
SAVE
MONEY
—



PLAN D

A beautiful three bedroom home, size 42 x 32 feet over all. Many buyers tell us they have saved a good thousand dollars or more on this house.



THE PERSHING—Four Exceptional Plans—

Price Given
On Enclosed
Price List

And We Pay
The Freight

Here is one of the choicest of our new designs. It is as modern as the latest fashion magazine. New trends in home design seek the utmost in simplicity, a very suitable trend, for economy of cost accompanies it. In two of the plans below, the car room is an integral part of the structure—the last word in architectural home design. In the other two plans the car room wing becomes a part of the home room arrangements. Both two and three bedroom plans are shown for the Pershing while bath room and closets are in all plans. All four plans have generous sized living rooms. Be sure to read "What you get when you buy an Aladdin house" on page 3 so you will have a full understanding of the completeness of the materials we furnish and also the service that goes with every sale.

Write us if you have any questions about Aladdin houses. We are glad to give the fullest information. The Pershing will delight you in every way.

You will receive 6" x 8" built-up sills, 2" x 8" joists on 16-inch centers and 2" x 4" rafters. Ceiling height is 8 ft. Complete detail specifications mailed on request to you.

Using Aladdin Read-Cut Materials You Save About Thirty Percent on Labor. In Other Words, Using Aladdin Read-Cut Materials, Your Home Is Almost One-Third Constructed When the Materials Reach You.



PLAN No. 1



PLAN No. 4

Deerfield, N.Y.

Gentlemen:

You have my permission to refer prospects to me in regard to Aladdin homes. I will be glad to show them through our home should they call.

We are very well satisfied with our home, particularly because we now own our own home and this would have been impossible without Aladdin, considering the cost of a contractor-built house of the same quality.

Wm. A. Keene



PLAN No. 2



PLAN No. 3



THE GEORGIAN—A Popular Brick Veneer—

Price Given
On Enclosed
Price List

And We Pay
The Freight

An important factor in the important matter of choosing a new home is the selection of a design that will wear well through the years. There are several types of architecture whose excellent proportions, true harmony of detail and particularly, adherence to detail, have carried them successfully through many generations. Such is that represented by the Georgian shown on this page. Its chief motif is drawn from the severe Colonial times when simplicity was considered among the chief virtues. And simplicity in such cases adds high values for it likewise achieves economy of cost and maximum space and convenience. The Georgian's glory is the fascinating design of its front entrance. Two fluted pilasters border the door which is surmounted by a truly proportioned gable, with projecting moulds and dentals. The door itself is in perfect harmony with the whole.

The Georgian interior presents a study in living perfection. Not a single desirable feature of the modern home is missing. Every desirable thing is present. A charming entrance hall greets the visitor, with arched entrance to living room and direct access to the kitchen. Semi-open stairway inconspicuously decorates this room. A cloak closet is located at just the right spot. Four windows give generous light and air to the living room, which is joined to dining room with a curved arch. Grade cellar entrance completes the downstairs facilities. The second floor presents three fine bedrooms, all with two exposures and splendid closets. The bath is of generous dimensions. The Georgian is priced for use of brick veneer on the outside walls. We will be glad to quote on furnishing wide siding if you prefer a siding exterior. Complete detail specifications sent on request.

Manheim, Pa.

Dear Sirs:

I have been recommending your homes and wish you would send catalogs to the names I am enclosing. I have many callers to see my home which we are enjoying. We feel as though it were a \$10,000 home.

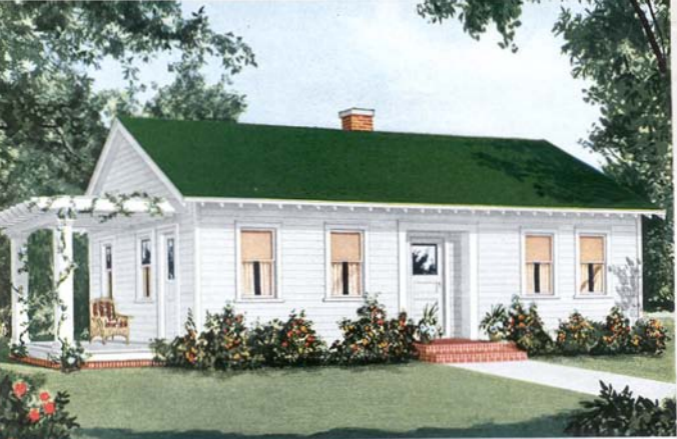
Jeremiah Earhart.



FIRST FLOOR—THE GEORGIAN



SECOND FLOOR—THE GEORGIAN



THE POPLAR—A Quaint Colonial Bungalow—

Price Given
On Enclosed
Price List

And We Pay
The Freight

A true Colonial atmosphere is present in the design of this delightful bungalow. You will be proud of the genuinely honest construction, sturdy timbers and beautiful interior woodwork. Originality is expressed in the roof lines. Exposed rafter ends lend a touch of individuality while the general proportions of the structure are most harmonious. Four plans of the Poplar are shown below. In some of the plans a door is shown in the side of the living room in order to give access to the pergola porch. In other plans a window is shown. In any of the plans you can have either a door or window depending upon whether or not you wish to order the pergola porch. There is no charge for this change from door to window or window to door. The 14' x 8' pergola porch has weather tight roof. It is priced separately so it can be purchased with your home or not, as you prefer. When the width of the building lot prevents using the porch at the

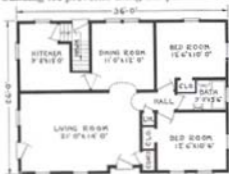
side of the house as pictured, it is often built on to the front of the house. This arrangement also provides a very attractive appearance. With the Poplar home you receive 6" x 8" built-up girders, 2" x 8" floor joists on 16" centers and 2" x 6" rafters on 24" centers. Ceiling height 8 feet. The roof has a one-quarter pitch. Complete detail specifications mailed on request.



PLAN C



PLAN D



PLAN G



PLAN F

Auburn, Calif.

Dear Sirs:

I will be glad to tell others about my Aladdin home. We are pleased in every way with the house and the way it went together. I have assured myself that I have saved between \$800 and \$1000 by not having a contractor. I expect to build another of your houses to rent.

S. P. Campbell.



THE SHELBURNE—Fascinating in Detail—

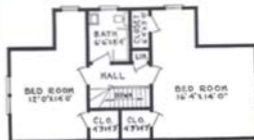
Price Given
On Enclosed
Price List

And We Pay
The Freight

The Shelburne was first erected in Bay City and opened to the public by Aladdin as a Model Home. Public approval was instant and unanimous and confirmed the good judgment of our designers. It is modeled along ultra modern lines, strong colors and contrast in the chimney, enlivening the picture from the approach. An intriguing front door, with circle top and embellished with large antique hammered hinges adding distinction to the entrance. The interior presents facilities of every nature for a family of six. The living room has three exposures, being 26 feet in depth by 15 feet in width. Curved arches lead to dining room and hallway, where you enter the downstairs suite of bedroom and toilet. Note the light, airy kitchen. Semi-open stairway leads to second floor where you find two grand bedrooms, bath, linen closet and ample clothes closets. Complete detail specifications will be sent on request.



SHELBURNE—FIRST FLOOR PLAN



SHELBURNE—SECOND FLOOR PLAN

Dear Sirs:

Manhattan, Mont.

Yes, you may refer anyone to us. We are very well satisfied with our home. It is located about five miles east of Manhattan, Mont.

J. G. Baynes.

Troy, Ohio

Dear Sirs:

I am proud to say that I built my house without the help of a carpenter. There are not words enough to tell what I think of readi-cut material. It's the only way to build.

Walter H. Stoner.



THE BREWSTER—Beautiful in Its Simplicity—

Price Given
On Enclosed
Price List

And We Pay
The Freight

Supremely good taste was employed by our designers when they formulated the Brewster. It is a choice architectural gem, clean in line, employing a form of simple beauty and exquisite simplicity. It is truly a work of art yet most practical in execution for its very simplicity is reason for its astonishingly low cost.

You receive highest quality materials, lowest prices, prompt shipment and a guarantee covering quantity, quality and safe arrival.

Waste of materials is eliminated, every foot of lumber giving 100% value in space, convenience and comfort. The columned and hooded entrance incorporates a commodious vestibule. The choice of two interiors are afforded you, each with about the same facilities but differently arranged. Each has excellent living room, two bedrooms, dinette, bath and closets.

If you have a preference for shingled outside walls we can also meet your wishes. While a brick foundation is shown in the above picture, the foundation can be built of solid concrete, concrete blocks or tile. Wood shingle roof is also available on request.

The Brewster is furnished with 6" x 8" built-up girders, 2" x 8" joists on 16-inch centers and 2" x 6" rafters on 24-inch centers. Complete detail specifications will be sent on request.



PLAN No. 1

Lyons, N. Y.

Gentlemen:

We will be glad to have you refer any customers you wish to us. We are pleased with our house and will show anyone thru and answer letters of inquiry. We are enclosing photographs of our home which we believe is better than the one in your catalog.

J. F. Schnabel

An Aladdin Home is Safer than a Wall Street Investment



PLAN No. 2



Brewster Living Room

Above is shown a photograph of the living room of the Brewster which is described on the opposite page. Note the surprising spaciousness of the lovely room afforded in this modest sized Aladdin home. The two mullion windows are well proportioned and give generous light and air. Below at the left is shown the cozy dining alcove, large enough to seat six or eight people. At the right, below, is an interesting picture of the bathroom in the Shelbourne which is described on page 13. You can have just such beauty in your Aladdin home.





Both plans of the Larchwood home are models of the Economy of Space in plan arrangement. The gable roof of porch gives distinctiveness to this fine home. You will notice two different sized plans are shown for the Larchwood. One plan has two bedrooms and the other plan has three bedrooms. We will welcome your inquiries

THE LARCHWOOD — Price Given On Enclosed Price List — And We Pay the Freight

about this typically American home. Complete detail specifications mailed on request.

THE CYPRESS — Price Given On Enclosed Price List — And We Pay The Freight

Here is a little gem of a home which has been built thousands of times during the past twenty years. No greater value for your investment could be possible than is shown in the picture of the Cypress and the choice of three floor plans. Any one of these can be erected easily by inexperienced men, assisted by our easily understood drawings and instructions. Write us about the one of your choice. Complete detail specifications mailed on request.

Paying Cash Is One Big Reason for These Low Prices





THE HAWTHORNE—Astonishingly Priced—

Price Given
On Enclosed
Price List

And We Pay
The Freight

The Hawthorne is a fine example of the average American home. It is ideal in size, perfect in proportion—and the price is astonishingly low. All materials are of our Certified high qualities. Always remember that Aladdin guarantees that you will have sufficient material to complete your house as stated in our specifications. And this guarantee also covers safe arrival of all material in perfect condition. A noteworthy feature of the Hawthorne home is that every bedroom in all five plans is provided with a closet. The 22' x 8" porch shown in the illustration is priced separately to permit you omitting it or selecting some one of our other porches, if you prefer. If desired, the porch columns can be furnished to extend down to the porch floor, making the cement block piers unnecessary. With the Hawthorne home you receive 6" x 8" built-up girders, 2" x 8" floor joists on 16-inch centers and 2" x 6" rafters on 24-inch centers. Ceiling height 8 feet. The roof has a one-quarter pitch. Complete detail specifications mailed on request.



PLAN A

Aladdin furnishes highest quality materials, performs about one-third of the construction labor for you by machinery at the factory, quotes one low price on the entire bill of material and ships everything in one car, freight paid to your station. Satisfaction or your money back is guaranteed.

Save Waste—Save Time—Save Money



PLAN C



PLAN D



PLAN F



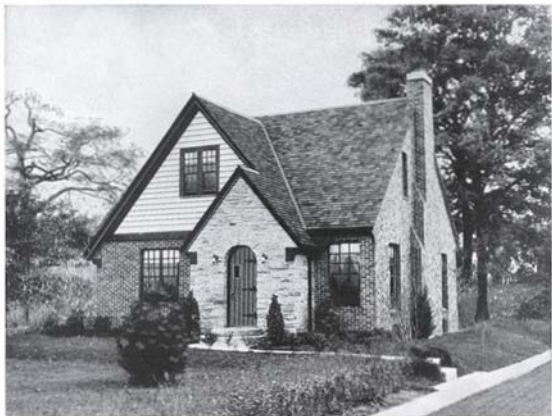
PLAN G

Sarasota, Fla.

Dear Sir:

My new Hamilton is nearing completion and is the talk of the town. It has proved to be a mild sensation. I am making a show place of it and thousands of tourists will see it this winter. I expect to be a steady customer of yours. You will doubtless do a sizeable business, for everyone is interested in the Aladdin way of breaking down the price fixing of the lumber associations that are throttling the building industry in Sarasota and its environs.

Fred W. Lytton.



THE HAMILTON—A Tremendously Popular Design—

Price Given
On Enclosed
Price List

And We Pay
The Freight

Many Aladdin houses have been built of brick veneer. We, of course, will quote on any design in the book, omitting siding and casings and furnishing special window and door jams. The Hamilton illustrates the attractions of the type. While the vestibule entrance shown above is of stone, it can be constructed of brick or, as is sometimes done, in wide siding. The Hamilton is a beautifully proportioned structure and will match the finest homes in any neighborhood. We will, of course, furnish this design with siding if preferred. Every modern thought is expressed in the arrangement of the interior. Note the large vestibule with cloak closet, arched opening leading from living room. Kitchen design is planned for step saving. Two splendid bedrooms are found on second floor with linen closet and bath.

We are proud to present this new Aladdin home, confident that it will give the highest satisfaction to every owner. We would like to give you more information about it if you will write us.

Sills are built up size 6" x 8", joists are 2" x 10", rafters are 2" x 6" and ceiling height 8'6" first floor and 8' second floor. Complete detail specifications will be mailed on request.



FIRST FLOOR PLAN No. 2



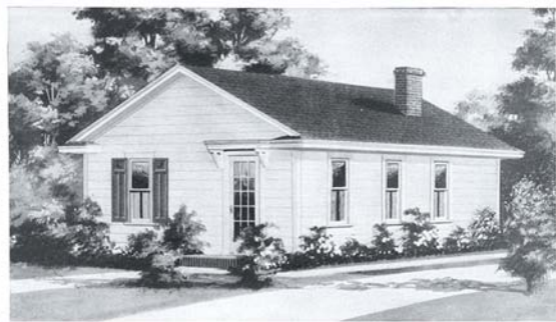
SECOND FLOOR PLAN No. 2



FIRST FLOOR PLAN No. 1



SECOND FLOOR PLAN No. 1



THE OAKWOOD—Sure to Please—

Price Given
On Enclosed
Price List

And We Pay
The Freight

Here is as pretty a home as you will find anywhere—modern in design and attractive in appearance. There are four plans of the Oakwood, all different in size and arrangement. In plan A of the Oakwood, the bath room would provide a roomy pantry, opening off from the kitchen, if the bath room is not desired. In plan B, the middle bedroom could be reduced in size and used for a bath room if desired. In this way the other two bedrooms could be increased in size. In Plan C the bath room can also be converted into a pantry if this change is wanted. Write us for further information concerning these or similar changes in plan arrangements. Since the Oakwood home is designed in pure Colonial architecture, the eave construction conforms to that style. The eaves of the Oakwood home are boxed and return straight to the walls of the house, adding much to the attractiveness of the exterior. With the Oakwood home you receive 6" x 6" built-up girders. The Oakwood plan A, B and C are provided with 2" x 6" floor joists on 16-inch centers, Plan K is provided with 2" x 8" floor joists on 16-inch centers. All rafters are 2" x 4" on 24-inch centers. Ceiling height 8 feet. The roof has a one-quarter pitch. Complete detail specifications mailed on request.

Webster, Mass.

Dear Sirs:

I want you to know that my Oakwood home is one of the finest homes around here and if anyone wishes to see it, I will gladly show it. We have it nearly finished now and my husband and I did all the work ourselves with one man to help nail. We did not have to hire anyone with experience, your blueprints are so clear anyone could read them.

Mrs. Adam Skrent.

**Cash Selling Cuts the Cost—Every
Dollar Brings 100 Cents Value.**



A very popular and widely copied plan designed by Aladdin. It is complete in accommodation including a well placed bath room.

Plan "B" will go on narrow lot and offers a fine arrangement for a family of six—three bedrooms, living room, dining room and kitchen.

A thoroughly proven plan offering everything demanded for a home of five rooms and bath. It is impossible to secure greater utilization than is here represented.

A special feature of the Oakwood Plan "K" is the inclusion of a cellar stairs. If not wanted the space can be converted into a pantry.



THE CEDARWOOD—A Real Beauty—

Price Given
On Enclosed
Price List

And We Pay
The Freight

This home has enjoyed a continuous popularity for nearly thirty years. It is perfect in proportion and a type that will never be out of fashion. There are four plans to choose from. Plan C contains a living room, kitchen, and three bedrooms. If a dining room is desired the rear bedroom can be made into a kitchen and the outside door changed at no additional cost. Another change sometimes made in Plan C is to make a bathroom out of the middle bedroom which

slightly enlarges the front and rear bedrooms. The prices quoted are for either siding or wood shingles on the outside walls. It is necessary that you specify on your order whether siding or shingles are desired. The porch is 16' wide and 8' deep. If you do not wish to build the brick piers shown in the photograph, we can furnish full length columns to extend down to the porch floor. The porch is priced separately so you can order this porch or some other porch shown in the catalog or leave it off entirely if you so desire. The Cedarwood is furnished with 6" x 8" built-up girders, 2" x 8" floor joists on 16" centers and 2" x 4" rafters on 24" centers. Ceiling height 8'. The roof has a one-quarter pitch. Complete detail specifications mailed on request.

Boylston, Mass.

Gentlemen:

I will be glad to give any information regarding my experience with your Aladdin houses. I found your material for my house and everything about it just as you represented it to be—everything matched perfectly and my house is very warm and cozy in winter. Almost anyone can afford one of these homes if they try.

Mrs. Minnie Place.



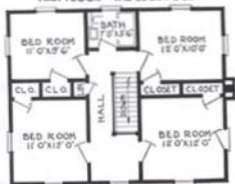


THE EDGEWOOD—New England Influence—

Price Given
On Enclosed
Price List And We Pay
The Freight



FIRST FLOOR—THE EDGEWOOD



SECOND FLOOR—THE EDGEWOOD

The best American traditions in home architecture are perfectly represented in the creation of the Edgewood. In floor plan and detail, it follows the conservative ideas of early New England settlers, whose homes, built one hundred and two hundred years ago, dot the hills and highways of the far eastern states. Embellishment of this type was limited largely to the entrance, whose detail was taken from the Doric or Ionic Architecture of the Greeks. The Edgewood is true to type. The interior arrangement presents space convenience and arrangement on a really grand scale for a home of this size. Leading from the entrance hall to the right, one enters a living room with a depth of 24 feet and exposure and light on three sides. To the left of the entrance opens up a well proportioned dining room with cloak closet, light airy kitchen and convenient dining nook. On the second floor are arranged four attractive bedrooms, each with double exposure, convenient closets and centrally arranged bathroom. It would be quite impossible to secure more living convenience for your investment, for not one inch of space in the entire home is wasted. We would like to discuss this home more in detail with you. Write us about it. Complete detail specifications mailed on request.

Liverpool, N. Y.

Dear Sirs:

You would be surprised to see how many cars stop on my highway and watch my Capitol go up. I am very proud to be the owner of two of your homes. The Birchwood could be rented a dozen times, but I will not rent it until I get in my Capitol. I am more than pleased.

Harry B. Love.



THE UNIVERSITY — Popular Everywhere —

Price Given
On Enclosed
Price List

And We Pay
The Freight

This home has been extremely popular in all sections of the country. It is a typically modern plan and typically American.

The roof treatment is very interesting with its large and small gable grouping. We furnish 12-inch siding for this home, which with its mitered corners, makes a beautiful exterior.

The living room is excellently proportioned, with fireplace taking up no room inside. Arched entrances are shown leading to living room from vestibule and dining room. The dining room projects from the side of the house, giving a size of 12' x 11' 6" in Plan 1 and 13' x 2' in Plan 2.

Arched entrance leads to hall which separates the two bedrooms.

A modern sized and arranged kitchen has rear outside entrance as well as door to basement.

Every facility found in the most modern home has been included in The University. Three coats of paint are included, the undercoat being of Aluminum. Knotless exposed lumber is your guaranty of real lasting quality.

Write us with any questions about The University.

Sills are 6" x 8" built-up, joists 2" x 10", rafters 2" x 6" and ceiling height 8'6".

Complete detailed specifications will be sent on request.

Batavia, N. Y.

Gentlemen:
I am writing you to let you know I received my cottage in nice time and in good shape. I have it up and living in it for the past two weeks and indeed very much pleased with it. Everything went together so nice and plenty of everything.

John R. Fenton.



PLAN No. 1



PLAN No. 2



THE LEXINGTON—A Big Favorite—

Price Given
On Enclosed
Price List

And We Pay
The Freight

The picture above carries the imagination back to the early years of the last century when Colonial simplicity was the inspiration for home architecture. Among the chief virtues of the times was directness and economy toward a desired end. These virtues are reflected in this perfect copy—the Lexington. This lovely home avoids decorative frills but does abound in life and vitality in form, line and shadow, or contrast. Originality is expressed in the charming entrance which is balanced with two shuttered windows on the front. Two interestingly arranged interior plans are shown below for the Lexington. Every facility and convenience is incorporated in both, generous sized

living room, two bedrooms, kitchen and dining nook, bath and ample closets. All main rooms have windows on two sides giving adequate light and air. The delightful dining nook, planned for both interior arrangements, is shown in photograph below. Write us for price on the Colonial type dining nook furniture. Dollar-A-Knot Quality is built into every part of all Aladdin Houses and becomes a matter of great pride to owners. We will be glad to give you the fullest information of this beautiful home. Complete detail specifications mailed on request.

Valuable information will be found on pages 2-3-4-5-6-7 and 8.



PLAN No. 1



DINING NOOK—The Lexington



PLAN No. 2



THE WELLINGTON—English Colonial Beauty—

Price Given On Enclosed Price List And We Pay The Freight

The Wellington is a very fine example of English Colonial Architecture. Not just another house, but a home of distinction that will do credit to any community. The exterior is a delight to the eye and the interior is ideally arranged. It can be used as a 3 or 4 bedroom home as the room marked "library" on the floor plan would make a perfect first floor bedroom, as lavatory is located next to it and door from dining room can be omitted. Another option is the Breakfast Room. This can be used as a pantry or entrance can be changed to living room and it can then be used as a study room.

The living room with its grouping of casement windows, both front and rear, actually make it a sun room and at the same time leaves wall space for the proper placing of living room furniture. If on account of location of your lot exit door to driveway should be on other side, it can be

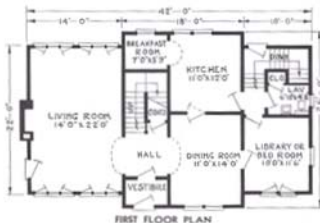
accomplished by reversing the entire floor plan. This will place the living room on the right hand side of the house. If you wish this change, please mention when ordering.

One of the very desirable features of the Wellington is the large amount of closet room. A commodious coat closet under main stairs, closet off the lavatory, four unusually large clothes closets and linen closet on second floor.

It is truly a home of beauty, comfort and convenience. A home of architectural balance with its dignified front entrance and massive roof that is good today and will be in good keeping fifty years from now.

The structural details of the Wellington are a guarantee of a permanent home. The sills are 6" x 8". Joists for first and second floors 2" x 10" on 16" centers. Height ceilings first floor 9 feet. Second floor 8 feet.

Good Materials Plus Good Construction and Correct Architecture Makes ALADDIN HOMES the Outstanding HOME VALUE of All Times





THE PLYMOUTH—A Perfect Home—

Price Given
On Enclosed
Price List

And We Pay
the Freight



FIRST FLOOR PLAN No. 1

The Plymouth is often referred to as a "perfect" home because it is average in size, pleasing in appearance and convenient and complete in arrangement. While the impression is that of a story-and-a-half house the second floor rooms are square with full height side walls. Two plans of the Plymouth are shown. In both plans, closet space is ample. This is particularly true in the Number 2 plan which provides for two closets off from the large, front bedroom, a closet off from each of the other bedrooms, a linen closet off from the hall and another large closet off from the hall large enough for trunks or storage. In both plans, a French door leads to the porch at the side. The porch is priced separately and can be included with your home if desired. With the Plymouth you receive 6" x 8" built-up girders, 2" x 8" first and second floor joists on 16-inch centers and 2" x 4" rafters on 24-inch centers. Ceiling height 9 feet first floor and 8 feet second floor. The main roof has a one-quarter pitch and green, slate-surfaced asphalt strip shingles are furnished for the roof covering. Complete detail specifications furnished on request.



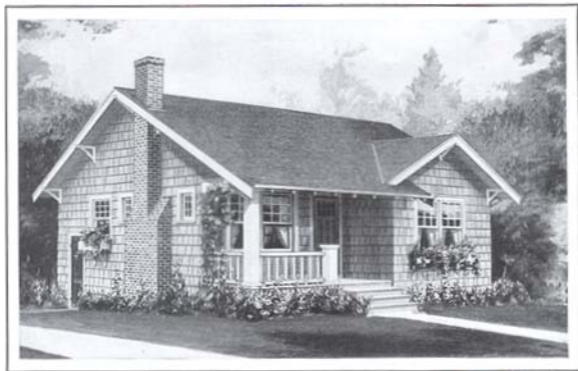
FIRST FLOOR PLAN No. 2



SECOND FLOOR PLAN No. 1



SECOND FLOOR PLAN No. 2



THE MARSHFIELD—A Snug, Distinctive Home—

Price Given
On Enclosed
Price List

And We Pay
The Freight

The Marshfield is a snug little home and the careful handling of fine details makes it a home of unusual distinction. It is compact, making it a home easy to heat and take care of. The front porch is included in the price. A fine location for a fireplace is suggested by the plans and illustration. However, we do not cut the openings for fireplaces and therefore they need not be built unless wanted. If you do not intend building the fireplace chimney, the two small windows in the end of the living room can be omitted and one full size window furnished in their place at no difference in price. The Marshfield is priced with siding or shingles on the outside walls. If you desire to shingle the outside walls as suggested in the illustration, specify them and we will furnish them for you at no additional cost. The Marshfield can be purchased in two sizes. Plan A has a conveniently located dinette, or dining alcove, off from the kitchen. A great number of small homes today are being built without a dining room and there are many good reasons for not including them. If no dining room is arranged it means a smaller home to build, to heat, to clean and maintain. It saves the cost of expensive dining room furniture. Still, many people prefer a dining room and therefore Plan B of the Marshfield is also offered. Plan B is practically the same as Plan A with the exception that a dining room is provided in place of the dinette. With the Marshfield you receive 6" x 8" built-up girders, 2" x 8" floor joists on 16-inch centers and 2" x 6" rafters on 24-inch centers. Ceiling height 9 feet. The roof has a one-quarter pitch. Complete detail specifications furnished on request.

The modern trend in home building has definitely turned to
Small, Convenient Houses.

Lower Investment Costs - - - Lower Maintenance Costs
and Easier Housekeeping all favor small homes.



MARSHFIELD—PLAN A

Auburn, N. Y.

Gentlemen:

We have been living in our home since October and are very much pleased with it. It is just what we have always wanted and we cannot praise it highly enough. We wish to thank you for quick shipment and service too. Had plenty of material to work with and some left over.

We have had many people ask to inspect our home and all were very much interested. We find that we saved exactly \$1400 in building this home in place of one from a local lumber dealer. The oak flooring was of a superior quality—everyone remarked about its thickness. You may refer prospective customers to us.

Mr. and Mrs. James L. Jones



MARSHFIELD—PLAN B



THE NEWPORT—Original in Design—

Price Given
On Enclosed
Price List

And We Pay
The Freight

This quaint design is as original a home as was ever designed! The Newport stands out in a manner that commands instant attention from the seeker of a home combining convenience and practicality with individuality of design. These features are admirably and abundantly supplied in the Newport. Two plans of the Newport are presented. While both plans include a living room, dining room, two bedrooms and a bath, it is interesting to study the differences between the two plans. Plan No. 1 is a little simpler in design and a trifle smaller in size. Plan No. 2 contains all the features of the No. 1 Plan and in addition is provided with a convenient coat closet off from the dining room, a handy place for a refrigerator at the head of the cellar stairs off from the kitchen, larger bedrooms and a larger kitchen. Both plans present the same outward appearance viewed from the front or left side. However, the No. 2 Plan is provided with a similar projection on the right side to the dining room on a lot 50 feet or more in width. If the fireplace is not to be built, we can omit the two small windows on each side of the fireplace chimney and furnish one full-size window in substitution at no difference in price. Also remember that if the location of your lot or your view is such that you would prefer the living room, dining room and kitchen on the right side of your home, rather than on the left side as shown, the house can be furnished in reverse plan arrangement at no additional cost. If this change is desired you have only to mention it when placing your order. The front porch shown on the plans of both homes is included in the price. The porch is furnished without the floor with the intention that you



NEWPORT PLAN No. 1

will secure material locally and build the floor of cement, brick or tile. With the Newport home you receive 6' x 8' built-up girders, 2' x 8' floor joists on 10' centers and 2' x 6' rafters on 24' centers. Ceiling height 9 feet. The roof has a one-third pitch and is furnished with green, slate surfaced asphalt strip shingles. Porch, as explained above, is included in price as are also the ornamental shutters for the front windows. Complete detail specifications mailed on request.

Robin, Idaho.

Gentlemen:

I will be very glad to show my Aladdin home to any prospective buyer you may send to see it. I am very happy with my Aladdin home and like it more each day. I feel anyone will be very pleased to have an Aladdin and they can save a lot, besides receiving better material than from local dealers. I am also pleased with the treatment received from the Aladdin Co.

Mrs. Fred Bishard.



NEWPORT PLAN No. 2



THE DOVER—A New Aladdin Creation—

Price Given
On Enclosed
Price List

And We Pay
The Freight

Recent vogue in modest homes is splendidly represented by the creation of this delightfully interesting Dover. The handling of the entrance gable is in excellent proportion to the main structure, and to attain the real beauty shown in our picture, it is suggested that the lawn be terraced to a level with the entrance. Note the special grouping of windows. This feature adds much to the Dover's light, air and comfort. The specially designed circle top front door is embellished with heavy hammered iron strap hinges.

Two plans are shown below, one 24 feet wide and one 28 feet wide. The first provides an exceptionally large living room 24 feet by 12 feet, an excellent dining room, two bedrooms, bath, conveniently located kitchen and grade cellar entrance. The larger plan offers three bedrooms and the same additional accommodations as the smaller. In selecting the plan to meet your needs, you will be happy in your choice of the Dover for your home. Complete detail specifications mailed on request.



THE DOVER PLAN A

Aladdin Houses Are Sold by the Golden Rule

For thirty-one years The Golden Rule has governed the business policies of the men responsible for The Aladdin Company and its products. During all this time there has never been a Court Action started by any customer against the company. Our broad guaranty of "Satisfaction or Your Money Back" insures a happy relationship between the company and all customers.

Gouverneur, N. Y.

Gentlemen:

I am sending the name of a prospect. Would you please send him a catalog? I am hoping you will sell him a home as I like mine better all the time. If I ever build again I will certainly buy thru your company as you used me fine in every way.

John A. Mills



THE DOVER PLAN B



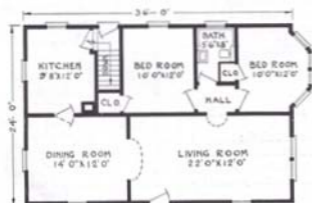
THE ROCKPORT — Cozy Design —

Price Given
On Enclosed
Price List

And We Pay
The Freight

A touch of originality is given this wholesome design by the creation of a bay window at the right, whose projecting cottage type windows harmonize splendidly with the architectural plan. Note the good looking Colonial doorway. Trimmed shutters add balance to the windows and contrast to the color scheme. Another noteworthy feature is found in the pilasters at each corner of the house. The Rockport is shown in two sizes below, each with special features to recommend it. Large living rooms are a desirable part of both plans, each with attractive dining rooms with bedrooms and baths efficiently designed. A study of Aladdin specifications will reward you with the knowledge that nowhere can be found quality to exceed that which is a part of Aladdin houses. Finer materials cannot be had for we have used the greatest care to seek out and use the very best. Send for details and give us an opportunity to prove beyond doubt the facts covering the above. Complete detail specifications mailed on request.

If the materials you receive with your home
are not all that we claim them to be in quality and quantity,
the Aladdin Company stands ready to return your money.



PLAN No. 1



PLAN No. 2



THE OXFORD—A Fusion of Grace and Beauty—

Price Given
On Enclosed
Price List

And We Pay
The Freight

One of the most recent and most popular of all Aladdin houses, the "Oxford" has justly earned its reputation as a gem among homes. Aladdin architects have been well rewarded for their efforts to produce a design with the fusion of graceful lines giving an atmosphere of impressive beauty, size and elegance. The house is essentially aristocratic—yet it possesses a definite, personal individuality of its own. The charming pointed shutters and arched side entrance with gate offer splendid examples of this personality. Note curved top English type front door.

The floor plan is ideal—with spacious, full-length living-room, cheery fireplace, curved, plastered arches and an unusually large kitchen with recessed cellar entrance. An outstanding feature is the Radio Room, off the living-room, which may also be used for phonograph, telephone, etc. This noteworthy idea is exclusive with Aladdin. There is also a vestibule coat closet, the convenience of which cannot be over estimated. Upstairs are three unusually large, light and airy bed-rooms, with big closets. The bathroom correctly expresses the modern idea with its recessed and built-in tub and ingenious arrangement of other appointments. See price list enclosed.



The OXFORD—FIRST FLOOR PLAN



The OXFORD—SECOND FLOOR PLAN

Dear Sirs:

Schenectady, N. Y.

Again we wish to thank you for the courtesy, consideration and all the help you gave us in connection with our order. We are well pleased with our house as are all who come to inspect it. We have several built in features that are attracting quite a little attention and will write you in detail about them later if you are interested.

H.L. Newell.

An Ultra Modern Aladdin Bed Room



The Bed Room

Proper ventilation and wall spacing are features that stand out by themselves in Aladdin bed rooms. Thoughtful planning in the selection of furniture and curtains and care in the arrangement of furniture makes possible such beautiful results as shown in this picture of an Aladdin bed room.

The picture at the left illustrates an ultra-modern treatment in the furnishing of our Avalon where the two bedrooms on the second floor were thrown into one large Masters Bedroom, with individual closets at the rear. Such changes in our regular plans can always be made at slight cost.



Conveniently Planned Kitchens



The Kitchen

From the housewife's standpoint the kitchen is the most important room in the modern home. By correct arrangement and planning the burden of kitchen work is greatly reduced in Aladdin kitchens. In all plans, excellent light and ventilation are provided.

At the left is shown a 10 x 12 ft. kitchen in one of our medium sized homes. It is light, airy, convenient and adequate for all purposes. At the bottom is shown a breakfast room addition. We will be glad to quote prices on such additions.



Beauty, Comfort and Convenience By Aladdin



THE GABLES—Quaint and Original—

Price Given
On Enclosed
Price List

And We Pay
The Freight

Unusual features distinguish this new and original home. A charming hood graces the front entrance. It is supported by well proportioned brackets and offers ample protection to the terraced steps. Roof lines, both gable and hip, are distinctive. The rear service porch is an attractive feature. Two sizes are offered to you, if you are attracted by the Gables. In both, the living room is large and given greater spaciousness by the alcove type dinette. Note that the kitchen has light and exposure on three sides. Cellar entrance is provided directly from the kitchen. Two bedrooms with ample closets, hall and bath offer every convenience and comfort. The built-in goodness, genuine quality of all materials and the beauty of this home will be a great satisfaction to every owner. Remember Aladdin's guarantee of satisfaction or your money back is your protection in building the Aladdin way. "Sold by the Golden Rule" has been tested by thousands of home builders to their lifetime gratification.

The Gables is furnished with 6" x 8" built-up sills, 2" x 8" joists and 2" x 4" and 2" x 6" rafters. Ceiling height is 8½ feet. Complete detailed specifications will be furnished on request.



PLAN No. 1

Shipment of
any Aladdin
Home can be
made a few
days after re-
ceipt of order.



PLAN No. 2



THE VASSAR—Model Story and One-Half—

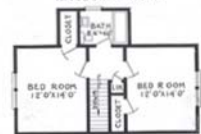
Price Given
On Enclosed
Price List

And We Pay
The Freight

The honor of being selected for picturing on the cover of this years catalog was given to this master design—the Vassar. This is because it is so typical of 1937 demand in the modest American home. The Vassar possesses originality, character and beauty while also combining simplicity, now so much demanded in home architecture. The vestibule



1st FLOOR PLAN No. 1

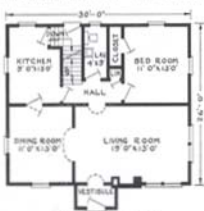


2nd FLOOR PLAN No. 1

entrance is surmounted by a half pitch gable roof, the front of which is embellished with artistic mouldings while pilasters form the frame for the front door. This entrance gable harmonizes with the larger gable which is a harmonious background for the fireplace chimney. Mullion windows are well proportioned to exterior wall spaces. Two thoroughly modern arrangements are shown in the floor plans below. Both offer facilities for three bedrooms, while in each case the bedroom on the first floor can be adapted to use as a sitting room or library. Opportunities for later expansion by the addition of a rear room to the first floor are offered in this plan. The Vassar is finding a host of friends and will appear favorably in any neighborhood. Write us for further information. Complete detail specifications mailed on request.

ALADDIN SUPER WALL BOARD

Aladdin Super Wall Board makes an ideal inner wall in place of lath and plaster, for all rooms, walls and ceilings. It comes to you in a natural light cream surface entirely suitable without decoration for attractive appearance. Either cold water paint or ordinary paint can be used if you desire to decorate. It is a full half inch thick, strong, tough, fire-resistant and vermin-proof. Its insulating value, against heat and cold, is superior to lath and plaster as reported by the United States Bureau of Standards.



1st FLOOR PLAN No. 2



2nd FLOOR PLAN No. 2



THE ANDOVER—Charming Colonial Influence—

Price Given
On Enclosed
Price List

And We Pay
The Freight

The satisfaction of a complete home is realized in the Andover. Nothing has been omitted in this compact cozy home. Vestibule with coat closet living room, dining room, kitchen, breakfast room and lavatory on first floor. Three bedrooms with commodious closets, large bathroom and linen closet on second floor. Just notice the generous size of all rooms, not an inch of space has been wasted. The front elevation of the roof shows two small dormers; one in the front bedroom, one in the bathroom. The rear has one large dormer twenty-four feet wide. Ceiling height first floor eight feet six inches, second floor ceiling height eight feet.

Dear Sirs:

Shamokin, Pa.

I will be pleased to give any information concerning my Aladdin home, also proud to show anyone through. Would have no reason not to be proud of it, as my wife and I have something we can call our own. We give you all the credit, to the extent that your Company made it possible for us to purchase our home—one within our means. We realize we would be like the man without a country—still in rent had it not been for you.

Many of our friends are calling to see it and all admire it. One person stated we have one of the nicest and best planned homes in our town and we are proud of that remark. Words cannot express the pride we take in our cozy home. We consider the Aladdin Company produces an economical home with a costly appearance.

J. G. Earhart.

Using Aladdin
Readi-Cut
Materials You
Save About
Thirty Percent
on Labor. In
Other Words,
Using Aladdin
Readi-Cut
Materials, Your
Home Is Al-
most One-Third
Constructed
When the
Materials Reach
You.





THE MAPLEHAVEN—A Master Design—

Price Given
On Enclosed
Price List

And We Pay
The Freight

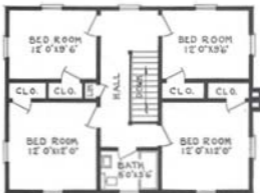
The grandeur of a white home with the sun's sharply etched shadows is beautifully pictured in the above photograph of the Maplehaven. The Maplehaven shown above is built in a beautiful residential section of Charleston, West Virginia, where it is admired by all observers. Grouped columns supporting the arched front entrance are perfectly proportioned. Paneled and glazed side lights embellish a most attractive front door design. Colonial, divided light windows are an added feature. Simplicity is the guiding motif of the whole plan. On entering this home, a generous sized hall is discovered, with semi-open stairway and large cloak closet at rear. At the right of the hall, a curved arch opens into spacious living room with three exposures. Dining room, kitchen and dinette complete the first floor facilities. Four light, airy bedrooms are afforded on the second floor, each with good closet and a conveniently located bathroom complete the arrangement. Complete detail specifications mailed on request.

Lawrence, Mass.

Gentlemen:

We are continuing to enjoy our Aladdin home very much. It is particularly attractive in its garden setting and has won much favorable comment in the press and otherwise. It has withstood two very severe winters and I can truthfully say that your houses are all that you advertise them to be.

Margaret Lord



Aladdin's
Readi-Cut
System
Saves
18% of
Usual
Lumber
Waste



THE CHATHAM—Charming Cape Cod—

Price Given
On Enclosed
Price List

And We Pay
The Freight

The Chatham adheres to simplicity and balance to achieve a charm peculiarly its own. There is not one excess foot of material or hour of labor required in the creation of this home. Every dollar invested produces the maximum of convenience, comfort and livableness. Three interesting interior arrangements are offered for your choice. One of these incorporates three bedrooms and two of them have two bedrooms. Sizes of the several designs are shown on the floor plans below. You will also note that in all three plans, the rooms have double exposures, window on two sides of the rooms for admitting the greatest amount of light and air. The Chatham promises to be one of our most popular cottages in its price class, and we know every owner will be proud to call it home. Complete detail specifications mailed on request.

**The Saving After Building a Small Home
Will Add More to
Your Happiness Than the Luxuries of a Big House**

Snyders, Pa., December 24, 1936

Gentlemen:

I am more than satisfied with my new Aladdin Birchwood home and it is just as you told me it would be. I am a carpenter by trade, having done carpenter work for many years and never had any houses so easy to build.

Arthur Westman



PLAN No. 1



PLAN No. 2



PLAN No. 3



THE AMHURST—Ultra-Modern Brick—

Price Given
on Enclosed
Price List

And We Pay
The Freight

We present here a sturdy conservative American type of home that is finding great popularity at the present. In form and detail, it will always remain attractive, substantial and wholesomely livable. The three gables facing the front are excellently proportioned, decorative and of real utility. Note the front entrance, approached by a convenient terrace, while the door is bordered with cut stone and slightly recessed. The interior of the Amhurst offers a world of attractions to the careful student of plan arrangement. Eight rooms and bath afford every luxury and necessity to be found in the very finest homes. From the cloak closet in the vestibule through the living room to the dining facilities, including dining room, kitchen and breakfast room, the arrangement is most studiously conceived for convenience. From the hall at rear, entrance is to be had to downstairs bedroom, lavatory and stairway. The second floor is arranged with owner's suite, including a most desirable sitting room and double closets. The third bedroom also has two generous sized closets and linen closet and bath are of convenient access. The Amhurst will lend charm and dignity in company with the largest homes and will be a never-ending source of pleasure and pride to its owner.

Aladdin Brick Veneer

Any Aladdin house shown in brick veneer can also be had with exterior walls of siding if preferred. Write us on this subject if you desire brick veneer or siding for any design.

Dear Sirs:

I would be just too glad to grant you permission to send any prospective customers to me or write me regarding our Aladdin home which we are enjoying so much at present. It is almost finished and I have done all the work myself.

Sterling, Illinois

Harold L. Heller.



AMHURST—FIRST FLOOR PLAN



AMHURST—
SECOND FLOOR PLAN

Real Aladdin Living Room Comfort



The Living Room

Aladdin interiors are planned by experts who appreciate the priceless value of a happy, contented home life. The living room is the very center of the home—a gathering place where idle hours become golden hours of rest and relaxation. You, too, will enjoy the comforts and luxury of an Aladdin living room.

Large Cheerful Dining Rooms



The Dining Room

Simplicity and good taste are outstanding features of Aladdin dining rooms. Correct proportions and correct wall spacing with the proper arrangement of doors and windows set a definite standard equaled only in the more expensive homes.

Expert Planning Makes Convenient Interiors



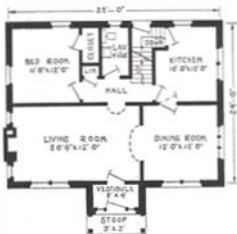
THE CONCORD—One of Aladdin's Newest—

Price Given
On Enclosed
Price List

And We Pay
The Freight

Distinction is given this charming design by an entrance at once original and appealing. Pillars grace the gabled vestibule while an arched ceiling adds a new touch to the design. Narrow side lights on each side of the front door afford light to the vestibule. The main structure of the Concord is beautifully proportioned. Besides a splendidly spacious living room, the first floor contains a suite including bedroom, lavatory, linen closet, and clothes closet. These are entered from the separate hall from which the stairway also leads to the second floor. Grade cellar entrance occupies the space under the main stairway. All four downstairs rooms have double exposure for light and air. The fireplace may be built in as shown or omitted if desired. On the second floor is found two well planned bedrooms, bathroom and four closets. Always keep in mind the high quality of materials built into all Aladdin Houses and that this quality can be had at such great economies only from The Aladdin Company. The Ready-cut System backed by volume production is the reason. Our Golden Rule Service and money back guarantee are your protection. Complete detail specifications mailed on request.

Shipment of
any Aladdin
Home can be
made a few
days after re-
ceipt of order.



FIRST FLOOR PLAN



SECOND FLOOR PLAN



THE STRATFORD — Enduring Beauty —

Prices Given
On Enclosed
Price List

And We Pay
The Freight

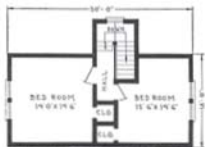
Modern architecture combined with skillful interior design distinguishes the Stratford—an immensely popular Aladdin home offered in two different sizes and plan arrangements. The Stratford is substantial—a lifetime home. Many distinctive touches lift the Stratford out of the ordinary. The snubbed gables—the shutters on the front windows—the gable roofed projection at the front providing for the entry and coat closet—the massive, circle top front door with heavy, ornamental hinges and Colonial style cylinder lock set—these are only a few of the many features that will appeal to you in this home. It is a home that will attract attention and cause favorable comment in any locality. At the prices quoted, siding or Cedar shingles as shown in the illustration can be furnished for the outside walls at no difference in price. The iron railing on the front terrace is included. Curved, plastered arches are suggested for the openings between the living rooms, dining rooms and entries and for the opening between the living room and hall of both plans.



STRATFORD No. 1—1st FLOOR PLAN



STRATFORD No. 2—1st FLOOR PLAN



STRATFORD No. 1—2nd FLOOR PLAN

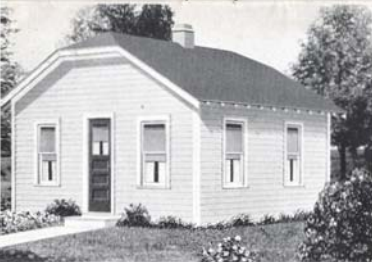


STRATFORD No. 2—2nd FLOOR PLAN

but square, cased arches can be furnished if desired at no difference in price. With the Stratford home you receive 6" x 8" built-up center girders, 2" x 10" first and 2" x 8" second floor joists on 16-inch centers and 2" x 6" rafters on 16-inch centers. Ceiling height 8'6" first floor, 8' second floor sloping to a minimum of 6' at front and rear. The roof has one-half pitch. Asphalt strip shingles are furnished for the roof covering. Complete detail specifications mailed on request.

ALADDIN SUPER WALL BOARD

Aladdin Super Wall Board makes an ideal inner wall in place of lath and plaster, for all rooms, walls and ceilings. It comes to you in a natural light cream surface entirely suitable without decoration for attractive appearance. Either cold water paint or ordinary paint can be used if you desire to decorate. It is a full half inch thick, strong, tough, fire-resistant and verminproof. Its insulating value, against heat and cold, is superior to lath and plaster as reported by the United States Bureau of Standards.



**Build
It Yourself**

THE CONVERTIBLE

Price Given
On Enclosed
Price List

And We Pay
The Freight

Thornton, Idaho

Gentlemen:

I have had a good many inquiries and visitors to our home, The Whitehall. We are more than satisfied with it in every way. I'll be glad to do all I can to boost the Aladdin homes to future homebuilders.

(Signed)

Myron B. Jeppson

The Convertible is a stepping stone to Homeland. It is a house designed for living quarters until a larger one is built, when it can easily be converted into a two-car garage. This is being done by thousands of people who own their own lot, either all paid for or partly paid for. The Convertible home gives one the opportunity to own a home with a minimum investment and then provides the opportunity for them to save for a larger home.

Two sizes of the Convertible home are shown. Either floor plan can be furnished in the 18' x 18' size or the 20' x 20' size. With the Convertible home, you receive 6" x 6" built-up girders, 2" x 6" floor joists on 16" centers, 2" x 4" rafters on 24" centers. The ceiling height is 8'. The roof has a one-quarter pitch. Complete detail specifications will be mailed on request.



Metcalfe, Ill.
Dear Sirs:

We are well pleased with our new home and will be glad to allow you the privilege of sending customers to us to see our Elmwood. We will be glad to show it to them.

Mrs. Elizabeth De-Alley.

There is a strong appeal in this pretty hip roof cottage. Three convenient plan arrangements offer a fine selection. The Whitehall is 24' wide and 20' deep. Ornamental shutters are furnished for the front windows as shown in the picture. If a cellar stair is desired, write for separate quotation on the cellar stair addition. With the Whitehall, you receive 6" x 6" built-up girders, 2" x 6" floor joists on 16" centers, 2" x 4" rafters on 24" centers. Ceiling height 8'. The roof has a one-quarter pitch. Complete detail specifications will be furnished on request.

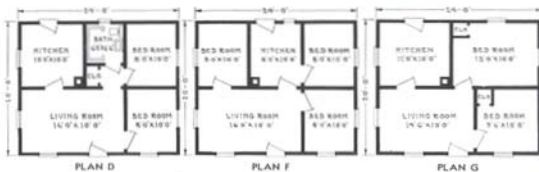
THE WHITEHALL—

A Splendid Model

Price Given
On Enclosed
Price List

And We Pay
The Freight

In this catalog you will find the **GREATEST HOME VALUES** ever offered in one book, **Big Production Methods and Direct Selling the Reason**





THE AVALON—Graceful and Stately—

Price Given
On Enclosed
Price List

And We Pay
The Freight

The Avalon is a graceful and stately home produced in the ever-popular Dutch Colonial type of architecture. Skillful handling of details is largely accountable for its charm. Nothing could be added to the Avalon to increase its beauty. The circling hood over the front entrance, the divided lights in the windows and front door, the shutters on the front windows, the pergola roofed sun parlor at the end of the house—these are the decorative touches that make the Avalon differently beautiful. The Avalon is priced with siding on the outside walls but is pictured with shingles used on the outside walls of the second floor. Shingled side walls can be provided without extra cost. The circular hood for the front entrance reaches you completely built-up making it only necessary to set it in place. Think of the labor saving this means to you. It would take a carpenter a day to lay out, cut, measure and assemble just this one small part of the home. We cut the hood by machinery and complete it with the brackets in less than an hour. The interior of the Avalon leaves nothing to be desired in a home of this size. The center hall with the conveniently located coat closet and the stairway to the second floor, leads to the left through a square, cased opening or curved plastered arch (whichever you prefer), to a large living room. From the living room a French door leads to a roomy sun parlor that will perhaps be the most popular room in the house. From the living room a door also leads to the rear hall. The rear hall connects the living room with the kitchen. Off from it opens a first floor toilet, a convenient closet and the door to the cellar stairs. Both the dining room and the kitchen are large and the door and window arrangement in these rooms permits perfect arrangement of fixtures and furniture. The second floor contains four large, corner bed rooms, all with three windows and all lighted on two sides. An exceptionally large closet is provided off from each bed room and a linen closet will be found in the hall. The stairwell in the second floor hall is guarded by an attractive rail, balusters and newel posts. The sun parlor pictured on the Avalon is included with the house at the price quoted as are also green, slate-surfaced asphalt strip shingles for the roof and the ornamental shutters for the front windows. With the Avalon you receive 6" x 8" built-up girders, 2" x 10" first and second floor joists on 16-inch centers and 2" x 6" rafters on 24-inch centers. Ceiling height 9 feet first floor and 8 feet second floor. The main roof has a one-quarter pitch. Complete detail specifications furnished on request.

Bangall, N. Y.

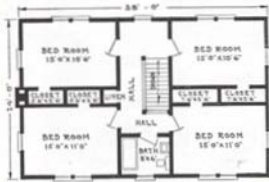
Dear Sirs:

We have been living some time in our new Avalon home and are so well pleased with it that we wish to tell you about it. There isn't one thing in it that we would want any different than it is. Before we built you know we changed the French doors into an archway and placed the chimney to the north of the house, which is a great improvement. It makes the living room just beautiful. Everyone that sees it admires it. A neighbor of ours is going to sell her lot here and as soon as she does she is going to put up one of these houses. She likes it very much. We are very well pleased with everything. I know there will be others who will put up your houses here.

Mr. and Mrs. Geo. Dillinger.



FIRST FLOOR PLAN



SECOND FLOOR PLAN



THE MARBLEHEAD—A Modified Cape Cod—

Price Given
On Enclosed
Price List

And We Pay
The Freight

The Marblehead presents a picture of dignity and simplicity in a popular type of brick veneer. Its dormered roof is perfectly proportioned and in keeping with the New England motif. It is planned to accomplish extreme economy in the use of decoration and yet it achieves true beauty. Two floor plans are illustrated below, one with two bedrooms and one with three bedrooms. Plan A has a ground width of 30 feet and a grand living room 25 feet deep with three exposures. Plan B is 36 feet wide



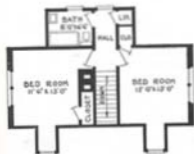
FIRST FLOOR PLAN A

This plan incorporates three bedrooms on the second floor with unusually ample closets. Both plans have desirable breakfast nooks. The Marblehead will fit into any neighborhood to the complete satisfaction and pride of its owner. Complete detail specifications mailed on request.

Gentlemen:

I shall be glad to have you use my name as a reference for Aladdin homes. I have had a good many inquiries and visits to our home, the Whitehall C. We are more than satisfied with it in every way. I'll be glad to do all I can to boost the Aladdin homes to future home builders.

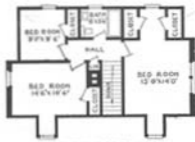
*Myles B. Jeppson,
Thornton, Idaho.*



SECOND FLOOR PLAN A



FIRST FLOOR PLAN B



SECOND FLOOR PLAN B

Many questions regarding Aladdin homes will be found answered on pages 2, 3, 4, 5, 6, 7 and 8



THE VIRGINIA—Different-Interesting-Well Balanced—

Price Given
On Enclosed
Price List

And We Pay
The Freight

The Virginia attracts instant attention because it is different, interesting and well balanced. The simplicity and economy of Colonial architecture are the keynotes of the Virginia. The house presents a cozy appearance that tells you it is more than a place to live—it is a Home. Both plans are alike in general arrangement but one contains three bedrooms and the other two bedrooms, allowing you to make your selection according to your requirements. In both plans of the Virginia the living room extends out at the side, thus giving a sun parlor effect to the home. The portion of the living room that extends out at the side is separated from the balance of the living room by a circling arch at the ceiling line. This arch does not extend down to the floor and thus it is possible to furnish the entire room as one, or to furnish the projecting portion as a sun room, if desired. You will notice

that the projecting portion of the living room is lighted by windows on three sides, a virtual sun parlor. See the colored interior photograph of the living room of the Virginia at the bottom of Page 8. The bedrooms and bath room are separated from the living quarters. Large, generous clothes closets are provided for each bedroom which add a very valuable feature to the home. Our designers have used every available inch of floor space in these plans which mean economy to the builder. The greatest width of the Virginia home is thirty feet, making it possible to build this home on a lot forty feet or more in width. With the Virginia home you receive 6" x 8" built-up girders, 2" x 8" floor joists on 16-inch centers and 2" x 4" rafters on 24-inch centers. Ceiling height 8 feet. The roof has a one-third pitch. Complete detail specifications mailed on request.



VIRGINIA PLAN No. 1

Brighton,
Rochester, N. Y.

Dear Sirs:

In reference to your letter concerning our Aladdin Virginia home, it was very satisfactory and we would be willing to show anyone our home.

Everyone who has seen it so far has praised the design and workmanship. In building a ready cut Aladdin house, we have saved a considerable sum of money. My brother who built the house was well satisfied with the construction which saved a lot of labor and material.

John Uehliacker, Jr.

Read the dollar
a knot guaranty
on page 4.



VIRGINIA PLAN No. 2



THE REDWOOD—A Little Kingdom of Your Own—

Price Given
On Enclosed
Price List

And We Pay
The Freight

The Redwood is one of the prettiest small homes ever designed. It gladdens the hearts of those who are looking for a small, compact house of up-to-date appearance. It is astonishing to find so complete a home in such small compass and with so many conveniences at so low a price. And the quality of the materials that come with the Redwood is identical with that found in the largest and highest priced Aladdin home. There is only one grade in all Aladdin homes—the best. Good materials make a sturdy, lasting home and one that is always easy to sell should you want to do so. The construction used in an Aladdin home is the same as that used in the best Architect-designed, Contractor-built house erected anywhere. We are offering this excellent home at a price only made possible because of our tremendous buying power, our direct to you sales plan and our cash prices. You buy not from a retailer, not from a jobber, not from a wholesaler, but direct from the manufacturer. We make it easy for you to buy right, easy for you to build well and easy for you to own this splendid home. You can build the Redwood yourself for the materials you receive are cut to fit and we furnish drawings and pictures showing where each piece goes. We also furnish a book of instructions telling you just what to do, when to do it and how to do it. Our book of instructions also tells you about many "short cuts" that will save you time when building your home. Even women have told us that they erected their Aladdin Home or assisted in the erection. With the Redwood home you receive 6" x 6" built-up girders, 2" x 6" floor joists on 16-inch centers and 2" x 4" rafters on 24-inch centers. Ceiling height 8 feet. The roof has a one-quarter pitch. Complete detail specifications furnished on request.

A Letter from Virginia

Gentlemen:

The little house we bought from you last May is complete. Everything went together nicely. The material was much better than we could have bought here and you furnished plenty of everything. We are more than pleased with our little home. If we ever build another will certainly buy from you as we figure we saved around \$300. We thank you for your kindness and fair dealings and will do all we can in the future to boost you.

Mr. and Mrs. J. E. Dickson

(Mail address sent upon request).

Reading, Pa.

Dear Sirs:

I built our Hawthorne home with the aid of my wife, and we enjoyed it. Anyone who can read a blueprint can do this and will appreciate their homes more for having built them. One man from a lumber yard here told me they don't even build stairways to cellar in their Ten to Fourteen Thousand Dollar homes, like you supplied me. My wife, daughter and I sure feel proud of this home of ours.

Carl C. Young.



REDWOOD No. 1



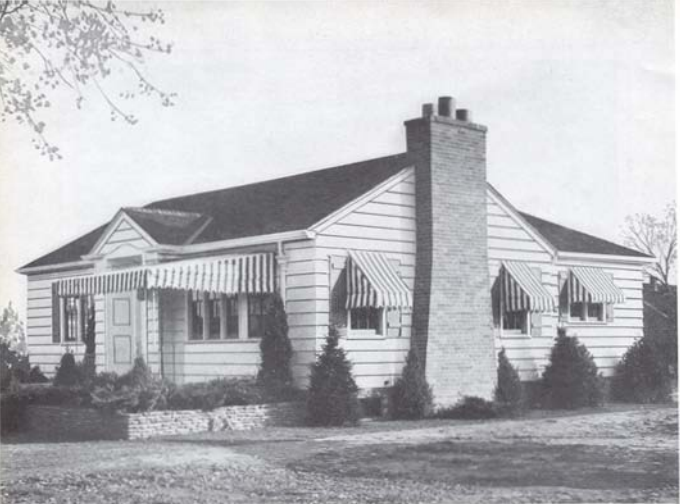
REDWOOD No. 2



REDWOOD No. 3



REDWOOD No. 5



THE FERNDALE — Modern Simplicity —

Price Given
On Enclosed
Price List

And We Pay
The Freight



An exquisite example of modern simplicity in home architecture is presented in this wholly new creation. It appeals instantly to the most fastidious. Originality of treatment is shown in this recessed and paneled entrance, surmounted by small well proportioned gable. A triple million window is observed in the front of the living room, while double million matches this in the front bedroom. Wide siding adds a final touch of values. Two sizes are illustrated below, one of two bedrooms and one of three. These plans merit the closest study which will result in highest approval of the skill of the designers. Thoughtful consideration has been given to the comfort and needs of the family. Well proportioned rooms, ample closet room and wall space and step saving placing of communicating rooms testify to the values of the Ferndale. Write us for additional information. Sills are built up of 6" x 8" timbers, joists are 2" x 6", rafters 2" x 4" and ceiling height 8' 6". Complete detail specifications will be mailed on request.



PLAN NO. 1

Indiana, Pa.

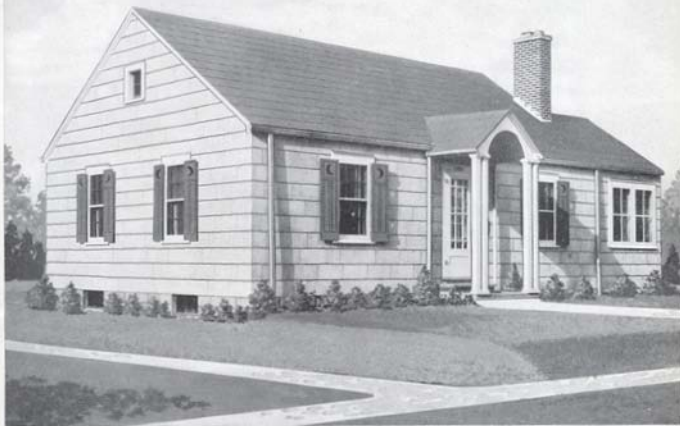
Gentlemen:

I have a mighty good house and very good looking job as I think you will agree on looking at the picture enclosed. I am not only satisfied with the materials furnished, but also with the prompt service and business dealings. I saved \$450 on house proper, quality of materials better than I had hoped for and there was not anything but what fit just right. If I were to build again it would surely be the Aladdin Way.

Clyde Woodward.



PLAN NO. 2



THE WINSTON—Latest in Exterior—

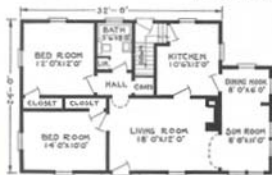
Price Given
On Enclosed
Price List

And We Pay
The Freight

One of the newest developments in plastic building materials is the Cement-Asbestos wall shingle which is pictured above on the side walls of the Winston. These shingles are 24 x 12 inches in size, fireproof and never have to be painted. We can of course furnish them in place of siding for any Aladdin house. Write for information.

The Winston is one of our newest designs and we present it in three attractive sizes. A special feature of this home is the original columned entrance, rising from a masonry terrace. A study of the three floor plans below will show you a choice of size and design that covers a wide range of investment. Plan No. 1 is 24 x 40 feet over all and includes living room 18 x 12 feet, sun room, dining nook, kitchen, grade cellar entrance, two bedrooms, bath and closets. Fireplace may be omitted if desired. Plan No. 2 will accommodate the same sized family but with less rooms. Plan No. 3 will also accommodate a family of four on a modest scale. All materials in all three of these Winston plans are of the same high quality and the sturdy construction is unchanged from that of the largest Aladdin home. Write us about the plan that appeals to you. Complete detail specifications mailed on request.

**The Saving After Building a Small Home Will Add More to Your Happiness
Than the Luxuries of a Big House**



PLAN No. 1



PLAN No. 2



PLAN No. 3



THE BIRCHWOOD — Dream-like Perfection —

Price Given
On Enclosed
Price List

And We Pay
The Freight

The Birchwood is a home of dream-like perfection. It will measure up to your highest expectations, from the strength of its sturdy timbers to the charm and beauty of its woodwork and finish. Shrewd buyers immediately recognize the opportunity to avoid paying the top prices charged by regular dealers—an opportunity made possible by dealing direct with the Aladdin Mills. It is just like buying your materials at a special discount of twenty percent to thirty percent. Comparing the price of this attractive home with the price asked by other concerns, prove the big savings Aladdin gives you. The porch is priced separately. It can be purchased with the home or, if you prefer, it can be omitted. Perhaps

some other porch shown in this catalog would be more satisfactory to you. The wooden columns of the Birchwood porch can be furnished to rest on the porch floor at no difference in price. It would then be unnecessary for you to build the ornamental brick piers. With the Birchwood home you receive 6" x 8" built-up girders, 2" x 8" floor joists on 16-inch centers and 2" x 4" rafters on 24-inch centers. Ceiling height 8 feet. The roof has a one-quarter pitch. Complete detail specifications furnished on request.



PLAN A



PLAN B



PLAN C



PLAN D

Dear Sirs:

Winthrop, N. Y.

I am very much pleased with my Birchwood house. The carpenter I had working on my house claimed I saved at least half on the price of labor and everything fitted fine, and the finishing material was better than I expected. I am well satisfied with everything you sent.

W. S. Keegan.

Curtis Bay, Md.

Dear Sirs:

The Aladdin home we built is located about two miles north of Odenton, Md. We are very well pleased with it and will be glad to recommend Aladdin homes to anyone who is thinking of buying or building a home. My husband is not a carpenter, yet he had no difficulty in putting up our readicut home with the aid of the complete plans we received with it.

Mrs. Lyle Fellows.

Buying All Materials From One Company Under a Strong Guarantee of Satisfaction Commands for You the Best Price and Saves Trouble.



THE MARYLAND—A New Modern Type—

Price Given
On Enclosed
Price List

And We Pay
The Freight

Appreciative students of home plans pronounce the Maryland the biggest, low cost home ever designed. To find three bedrooms in addition to living room, dining room, kitchen and bath within the compass of 26x24 ft. is astonishing. Every inch



FIRST FLOOR PLAN A



SECOND FLOOR PLAN A

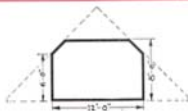


FIRST FLOOR PLAN B



SECOND FLOOR PLAN B

**You Will Start Saving
Money the Day You
Buy An Aladdin Home**



Optional Materials and Equipment

Aladdin Houses—Are priced only in double construction which is double floor and wall construction. If climatic conditions permit you to use a single floor and single outside walls, we will omit the sub-flooring, wall sheathing and building paper regularly furnished with our homes and credit you full allowance for it.

Porches—Whenever possible Aladdin porches are quoted separately to permit buying the house without the porch or to enable you selecting a different porch from that shown on the house. The front steps are included in the price of the porch.

Cellar Windows—For wall opening 3 ft. wide by 2 ft. high, complete with frame, glazed sash and hardware \$2.50 each. It is unnecessary to ship frames before the house, for by leaving openings 3'x2', the frames can be set in the foundation later.



INTERIOR DOOR

Closet Doors—Because it is more convenient to use just a cased arch for closets in smaller bedrooms, we do not include closet doors in the Cypress, Cedarwood, Elmwood, Oakwood, Redwood, Whitehall or Winston Plan No. 3. The cased openings in these homes can be artistically draped eliminating the use of closet doors which will give more space for arranging furniture. If you wish closet doors for any of the above mentioned homes, we will provide them at \$5.95 each including hardware. An illustration of the style of inside doors furnished with Aladdin homes is shown at the left.

Outside Doors—The outside front door furnished with many of our homes is a standard sash door with one light of glass about 24" square in the top. If the Aladdin home you select is provided with this design of door and you wish us to furnish any of the other

styles as shown for other homes in our catalog, write for prices.

Extra Windows—If extra windows are desired, or if you wish us to replace single windows with double windows, write for prices.

Oak Flooring—Oak flooring can be furnished in any or all rooms of any Aladdin home. If wanted, write for prices, and state in what rooms you will wish to use it.

Shingles and Asphalt Roofing—Green slate surfaced asphalt strip shingles or No. 1 Red Cedar wood shingles are furnished with some Aladdin homes. The slate surfaced shingles have a hexagonal butt and are self spacing. When roll roofing is included see separate quotation for shingles instead of roll roofing on price list attached.

Wall Shingles—No. 1 Red Cedar shingles and shingle stain can be furnished for the outside walls in place of siding at no extra cost.

Arches—Square cased openings or materials for curved plastered arches can be furnished in any of our homes where arch openings are shown in the plan.

Screens and Storm Sash—Screens and storm sash can be furnished for all outside door and window openings. Write for prices, mentioning the home selected.

Cellar Stairway Addition—If the Aladdin home you select is not provided with a cellar stair, we can furnish the stair addition as shown at the rear of the Fairfield Plan No. 1 or No. 2. Write for prices.

Plaster Base and Wallboard—Lathing for a plaster base and wall board is priced for each home on price list attached thus allowing you to select the particular material that best meets your requirements.

Kitchen Cabinets—The interior photographs of Aladdin kitchens show many attractive cabinet arrangements which can be furnished for any Aladdin home selected from this book. Write for prices.

It's Easy to Follow ALADDIN Blueprints



FIGURE 4-REAR HALL



FIGURE 7-REAR HALL



FIGURE 8-RIGHT HALL

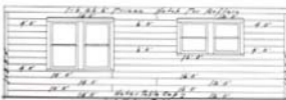


FIGURE 9-RIGHT HALL

Here we have shown in greatly reduced size, a few figures taken from a set of Aladdin Ready-cut House Plans. They show the size, length and position of every piece of material entering into the construction of the home. All materials that need mitering are mitered to the exact length and all you have to do is nail the materials in place.

"HOMEBUILDERS TO THE NATION"



THE KITCHEN

Convenient step saving kitchens are made possible in Aladdin homes by expert designers, who have made a life long study of this work. We will quote on this design of kitchen cabinet, or any other design shown in our catalog, for your Aladdin Home.



THE LIVING ROOM

Large comfortable living rooms exemplify the careful thought given your home by our designers, in locating doors and windows so that your furniture can be attractively arranged.



THE BATHROOM

Aladdin bathrooms are modern in design and planned to give you the best possible arrangement for your fixtures.



FIRST FLOOR PLAN—THE CAPITOL

SECOND FLOOR PLAN—THE CAPITOL

The Capitol is an imposing home. Large sized rooms throughout and four bedrooms with ample closet space make it a wonderful house for a large family. Some of our customers use the library as a breakfast room, opening off from the kitchen. Others have used the same space for a first floor bedroom and still others have used it for a first floor toilet with hallway connecting the living room with the kitchen. On the second floor, the sewing room is often used as a second bathroom, opening off from one of the front bedrooms. If you prefer to have windows with six square divided lights in the upper sash instead of the windows shown in the photograph, write us for prices. The front and side doors are our No. 9 doors shown on page 42. The 14' x 8' porch and the 14' x 10' portecochere or covered drive, are both roofed with a tight, weatherproof roof and both are priced separately so they can be purchased with the home or not, as you prefer. Complete detail specifications furnished on request.



THE CAPITOL—

Price Given
On Enclosed
Price List

And We Pay
The Freight

THE BELHAVEN—

Price Given
On Enclosed
Price List

AND WE PAY THE FREIGHT



There is plenty of style in the Belhaven home—style at low cost. It combines a fine exterior with two fine plans. The Belhaven is a home that for convenience and compactness cannot be surpassed. Little things, well planned, add much charm; such as well proportioned hood over front entrance, dormer over front windows, ornamental shutters, divided lights in windows, fifteen light front door. These are all items that add much to the value of your home at very little cost. Plan D is provided with an inside cellar stairway. If you wish to purchase the other Belhaven plan and desire a basement or cellar beneath the home, we suggest that you purchase our Cellar Stairway addition as described on page 50. It provides a practical and convenient means of reaching both the cellar and the kitchen from the outside. The Belhaven home can be built with terraced front lawn as shown or set upon a higher foundation. With the Belhaven home you receive 6' x 8' built-up center girders, 2' x 8' floor joists on 16 inch centers and 2' x 6' rafters on 24 inch centers. Ceiling height 8 feet. The roof has a one-quarter pitch. The hood over front entrance and ornamental shutters as shown are included in the price quoted for the house. Complete detail specifications are furnished on request.

Selling for Cash Makes These
Low Prices Possible



PLAN A

PLAN D



THE FAIRFIELD

Bright and
"Homey"

There is a charm about the Fairfield that attracts your instant attention. It is a bright and "homey" plan. The home is so distinctly attractive that it has been necessary for us to design it in two different plans;



FAIRFIELD PLAN No. 1

FAIRFIELD PLAN No. 2

one provides for a 26-foot width home and the other for a 28-foot width home. This is to adapt the house to lots of different frontage. In both of the Fairfield plans our cellar stairway addition is arranged off the rear of the kitchen and is included at the price quoted. This permits entrance direct to the kitchen or to the cellar, from the outside of the house. The porch also is an integral part of the home and is included in the price. In the No. 1 plan the living room extends across the entire front of the house. Two bedrooms are provided for in this plan. An extra bedroom 10 x 12 feet in size could be obtained if desired by taking the space from the end of the living room. This would leave the living room 16 x 12 feet in size and would give an arrange-

ment and number of rooms practically the same as in the No. 2 plan. This change can be made for you in the No. 1 plan for \$14.00 additional. Three bedrooms are arranged in the No. 2 plan. Complete detail specifications furnished on request.

Three plans of the Elmwood home offer a fine choice of room arrangement in this attractive home. Two and three bedroom plans are available. Some of our customers who select the plan A have us place the bath room door in the partition between the kitchen and bath room. They then use the bath room for a pantry. Others have us provide a closed opening between the kitchen and bath room and they then use the bath room as a dining alcove. When this last described change is made we often omit the partition between the living and dining rooms, forming a living room 12' x 19' in size. Either of these changes may interest you

providing a bath room is not desired. Similar changes can be made in any Aladdin home. The 14' x 8' pergola type porch with weather proof roof is priced separately so you can purchase it with your home or not, as you prefer. Many purchase and use the Cedarwood porch on the Elmwood. With the Elmwood home you receive 6' x 8' built-up girders, 2' x 8' floor joists on 16-inch centers and 2' x 4' rafters on 24-inch centers. Ceiling height 8 feet. The roof has a one-quarter pitch. Complete detail specifications furnished on request.

THE ELMWOOD—

Price Given
On Enclosed
Price List

And We Pay
The Freight



ALADDIN

Readi Cut

Summer Cottages

Easy to Order--Easy to Build



The call of the wild—the urge of the great outdoors—can be answered with enthusiasm when one has an Aladdin Summer Cottage to go to.

Only high grade materials are furnished for Aladdin Summer Cottages. Clear and knotless bevel drop siding, knotless flooring, knotless partition material, knotless outside finish, etc., distinguish Aladdin Summer Cottages from the ordinary kind.

For instance, notice the style and thickness of our clear and knotless bevel drop siding as shown by full size drawing. This is unusual material, unusual high quality—and still our prices are low!

Immediately on receipt of your order we mail you a complete set of drawings, showing where every piece of material goes. You also receive a book of instructions and illustrations showing and explaining in a simple manner just how to build your cottage. Even if you are not experienced in carpenter work, **You Can Build Your Own Aladdin Cottage.**

Our price includes not only the materials but a large proportion of the labor—every piece of lumber in Aladdin Cottages is cut in our mills to its exact length, breadth and thickness—ready to nail in place on arrival.

All material for the erection and completion of your Aladdin Cottage will be on the ground at one time. Nothing forgotten nor overlooked. Summer cottages are usually built at places some distance from supply dealers. Trips back and forth are expensive. Your Aladdin Cottage arrives at destination complete—all lumber ready to nail in place—all windows, glass, doors, roofing, locks, nails, hinges, paint—in fact, everything.

In accordance with customary Summer Cottage Construction, the rooms are open to the rafters, and the studs on the inside of the outside walls are left exposed, showing the smooth interior surface of the Knotless Siding.

Any Aladdin Cottage can be shipped and delivered to you in about one week after receipt of your order. In another week your cottage can be ready to live in.

When erected, the cottage is identical to one built by a contractor except that the material and type of construction is far better than the average.

Specifications for Summer Cottages
—The Aladdin Company guarantees to furnish a sufficient quantity of materials to complete your summer cottage in accordance with the specifications listed below and further described in the reading matter concerning each cottage.

Quality of Materials—All lumber is guaranteed to be of high quality. Only Aladdin Certified Materials are furnished.

Girders or Sills—Built-up of 2" material to size specified on page showing cottage.

Floor Joists—Spaced on 24-inch centers, dressed and cut to fit. Size of joists specified on page showing cottage.

Studding—For walls, 2" x 4" placed on 24-inch centers, selected for quality and cut to exact length ready to be nailed into place. All walls have top and bottom plates which is the approved type of construction.

Wall Ties—Selected for quality, dressed and cut to exact length, ends mitered ready to nail in place.

Rafters—Placed on 24-inch centers and perfectly mitered and cut to fit. Size of rafters specified on page showing cottage.

Flooring—The flooring used in Aladdin Summer Cottages is Clear and knotless, tongued and grooved, accurately matched and machined to give a beautiful finish.

It is what is known as "inch" flooring but when machined down is actually $\frac{1\frac{1}{2}}{2}$ of an inch in thickness. Cut in exact length ready to nail in place.

Siding—Clear and knotless bevel drop siding manufactured so it will have a perfectly smooth interior surface against the studs. All siding cut to exact length.

Partitions—Clear and knotless double-faced beaded ceiling held at top by grooved partition cap and secured to floor by quarter-round molding on each side. All openings cased to standard size so doors can be used if desired.

Roof Sheathing—1-inch lumber to belaid tight. All sheathing dressed, cut to exact length and ready to nail in place.

Roll Roofing—Made of heavy weight felt base, saturated with asphalt and surfaced with natural green slate firmly imbedded in the heavy water-proof base.

Outside Finish—Such as corner boards, window and door frames, moldings, etc., manufactured of clear and knotless stock.

Window Sash—Manufactured of knotless stock. Glass in sash ready to hang. Windows check rail type, size of glass in each sash, 26 x 24 inches, with a few exceptions where a smaller window is required to carry out the proper effect.

Outside Doors—Clear and knotless, mortised for lock sets, glass placed in them, ready to hang.

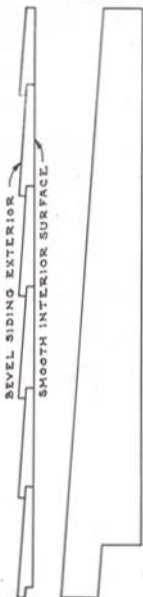
Porches—The price quoted for each cottage includes the porch. Screens quoted separately in Price List.

Paints—Two coats furnished for exterior. Unusual care has been taken in selecting paints, as the appearance of your cottage depends to a great extent upon the quality of paint used.

Hardware—Frosted brass finish lock sets, $3\frac{1}{2}$ " butts for doors, spring window bolts for all check rail windows, casement locks and hinges for swinging windows, nails of all sizes in proper amounts to complete the cottage.

Blue Prints—Drawings and a book of instructions showing every step of erection are furnished so that even though you may not be a carpenter, you will know just how to erect your cottage.

Reversing Plans—Plans can be reversed without charge. This will place all rooms on opposite side of house from that shown.



FULL SIZE DETAIL OF THE CLEAR AND KNOTLESS BEVEL DROP SIDING FURNISHED

THE LONG BEACH . . .

Big, light and airy living rooms are desirable features of the three plans shown for The Long Beach. Each has, in addition, three bedrooms, toilet and kitchen.

Plan No. 3 is arranged so that upper and lower built-in berths can be installed giving a larger owner's bedroom.

This summer cottage is both sturdy and handsome and will give long satisfaction to its owner.

The sills are 4" x 6" built-up, floor joists are 2" x 6", wall studding 2" x 4" and height of partitions 7'6". See specifications for summer cottages on page 54.

Screens and other equipment are described on page 51 while prices will be found on enclosed price list.



LAKE LOUISE

A woody atmosphere pervades this interesting cottage. An increasing demand for the log cabin type has caused us to present the Lake Louise this year for the first time.

The outside walls are built of special thick siding machined to give a true log effect, corners mitered and with log type porch columns.

The front porch can of course be screened, it being eight feet wide. We will quote a price on this type of siding for any of our summer cottages.

Two optional floor plans are shown and priced, each with three bedrooms.

Sills are built-up, size 4" x 6", joists are 2" x 6", rafters are 2" x 4", wall studding 2" x 4" and height of partitions is 7'6".



Gentlemen:
Troy, Ohio

The building material for the house has arrived and everything is just as advertised. Am very proud of it. Should I want to build again in the years to come it surely will be an Aladdin for I will always think of you first. I will send a list of names as soon as I can get to see them as there are several friends who want to see my house or material before they decide to build.

Walter H. Stoner

THE SHOREVIEW

The Shoreview is furnished in three popular sizes. Any one of them can be built on a very narrow lot. The Shoreview No. 1 is a snug little layout of four rooms and porch. It is conveniently arranged and good looking, too. The other arrangements are very well planned and give you the most in comfort and convenience. The sills are 4" x 6" built-up. The floor joists are 2" x 6" on 24-inch centers. The rafters are 2" x 4" on 24-inch centers and the roof has an exposed eave. The height of the interior partitions is 7' 6". See specifications page 54.



Prices Given
On Enclosed
Price List



Freight Paid Price



Pawtucket, R. I.
August 10, 1935

Gentlemen:

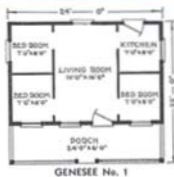
Would you kindly send me a book of your homes including summer cottages? A friend of ours has looked over ours we bought from you in 1931 and is interested. We have the Genesee No. 2 and sure have had a lot of good times in it. It is located in the country on top of a hill overlooking a lake. The house came through O. K. and just as you represented.

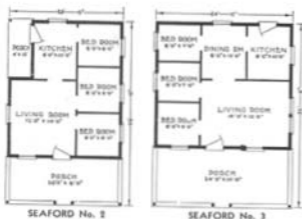
Mrs. Wm. Bell



THE GENESEE

The Genesee is a strikingly good looking summer cottage and it is shown in three well planned arrangements. The Genesee No. 1 is 24' x 22' overall and contains a generous porch, living room, three bedrooms and kitchen. The full width of the cottage is utilized for a front porch. The Genesee No. 2 offers a unique arrangement of rooms, having living room and two bedrooms facing the front of the house. Kitchen and front and rear porches complete the plan. The Genesee No. 4 will attract you because of the wide expanse of living room across the front of the cottage. The sills are 4" x 6" built-up. The joists are 2" x 6" on 24-inch centers. The rafters are 2" x 4" on 24-inch centers. The height of the interior partitions is 7' 6". See specifications page 54.





THE SEAFORD—

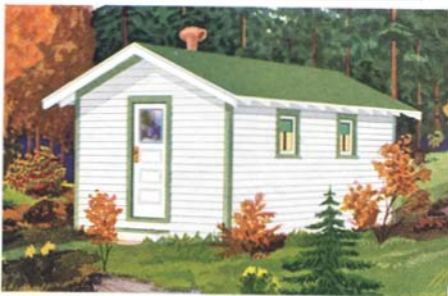
Freight Paid Price

Price Given on Enclosed Price List

Among the large types of summer homes, the Seaford stands out for the many unusual qualities it possesses. The Seaford No. 2 is a decidedly popular plan, a three bedroom design with a very convenient porch arranged at the side of the kitchen. The Seaford No. 3 has an exceptionally large porch, ten feet deep, and six rooms. Remember, we can rearrange the partitions in any summer cottage to meet your needs. The Seaford cottage has 4" x 6" built-up sills. The joists are 2" x 6" on 24-inch centers. The rafters are 2" x 4" on 24-inch centers. Roof one-quarter pitch. The height of the interior partitions is 7' 6". See Specifications Page 54.

THE HUNTER'S LODGE

The Hunter's Lodge answers the demand for a low cost camp or "shack" in the woods. Two men can start work on the erection of the Hunter's Lodge in the morning and sleep in the completed building at night. It is a one room building and can be purchased in your choice of three sizes. The Hunter's Lodge No. 1 is 12' x 16' in size. The Hunter's Lodge No. 2 is 12' x 20' in size. No. 3, 16' x 20'. Bunks can be built up across the rear or sides or you can use double decked steel bunks or cots. We use only the best materials in Aladdin homes and summer cottages and furnish these same high quality materials for all Aladdin buildings, regardless of their size or cost. Due to the fact that the heavy, close fitting siding described on page 54 is furnished with the Hunter's Lodge, you will find the building easy to heat in the late fall months. The Hunter's Lodge contains a total of four 18" x 24" swinging casement windows, two being arranged in each side wall. A door with glass in the upper section is furnished at the front. See Specifications, page 54.



PRICES GIVEN ON
ENCLOSED PRICE LIST

THE STATLER

The Statler is a substantial, comfortable summer home, and is shown here in two different plan arrangements and sizes. The Statler No. 2 is size 30' x 22' overall having living room, two bedrooms and kitchen. The porch is 20' wide and 6' deep. This plan is one of our best sellers. The Statler No. 3 is size 18' x 24'. It is a popular type affording maximum room for its dimensions. The sills are 4" x 6" built-up. The floor joists are 2" x 6" on 24-inch centers. The rafters are 2" x 4" on 24-inch centers. The height of the interior partitions is 7' 6". See Specifications, page 54.





THE BAR HARBOR—An Ultra Modern Type—

Price Given
On Enclosed
Price List

And We Pay
The Freight

Extremely modern, but not "modernistic," the Bar Harbor presents the latest thought in summer home design. Its beauty evolves from its simplicity of form and line, yet it is as rugged as the Maine coast from where it draws its name.

Horizontal lines of the siding are accentuated by similar lines in the windows and door. The sturdy roof is in perfect harmony with this type. Two sizes are presented from which to choose. Room sizes in both plans are identical. And in both, the outstanding feature—the newest idea in summer homes, is the joining of living room and porch into one single unit.

The projecting part of the living room is entirely enclosed with full casement windows. It opens up perfectly as a porch, yet can be partially or fully enclosed in inclement weather. By this arrangement the livable spaciousness of the living room is almost doubled.

Plan No. 2 offers two bedrooms while Plan No. 1 has optional four bedrooms or three bedrooms and dining room. Should you choose Plan No. 1 and desire the rear porch and dressing room we will be glad to quote price for this latter feature.

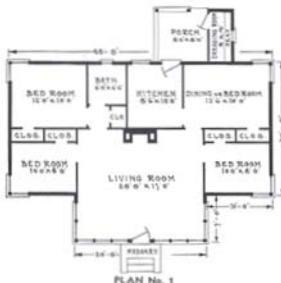
The Bar Harbor is furnished with 6" x 6" built-up sills, 2" x 8" floor joists on 24-inch centers and 2" x 4" rafters on 24-inch center. See specifications for summer cottages on Page 54.

Cicero, Ind.

Gentlemen:

Our house is not quite finished but we are getting along fine. Neighbors remark about the fine quality of material and can't see how I can get through with so little cost. They think a house like that would cost \$3000 or \$3500 and are surprised when I tell them I will get through and finish it for \$2500.

D. B. Zimmerman



PLAN No. 1

Modern, efficient
manufacturing
methods, Read-
Cut construction
and CASH Selling
result in lowest
possible prices.



PLAN No. 2

ALADDIN SUMMER COTTAGES AND GARAGES

IN presenting this line of Aladdin Summer Cottages we have selected this year only those cottages which have proved themselves thoroughly practical during the past years. We have sold thousands of these designs. They can be found nestling on the banks of a thousand lakes and rivers throughout the entire country.

Three things are chiefly essential in a summer cottage—protection from the elements, a generous porch and plenty of light and air. In each cottage shown these things have been borne in mind. But always we have kept cost down. Strength has at no time been sacrificed, nor has weather tightness been overlooked. Every cottage is strong, tight and substantially built of the best materials.

A comparison of prices with what the same sized cottages can be built for through any other source will immediately show to you the remarkable saving, a saving you cannot afford to lose.

One feature in connection with the erection of your Aladdin summer cottage is of especial value. You will have every bit of material needed for the erection and **COMPLETION** of your cottage **ON THE GROUND AT ONE TIME**. Nothing will be forgotten or overlooked. Summer cottages are usually built at places some distance from supply dealers. Trips back and forth are expensive, in both time and money. Your Aladdin cottage arrives at destination **COMPLETE**. The lumber is all there, ready to nail in place—the windows, glass, doors, roofing, locks, nails, hinges, paint—in fact everything.

BUILD IT YOURSELF

Any one of The Aladdin Summer Cottages described in this book can be erected by you without previous experience. The materials are cut to fit in our mills ready for nailing in place, and you will be assisted by complete detailed blue prints and pictures. When erected the cottage is identical to one built by a contractor except that the material is far better than the average. Aladdin cottages are not sectional in any sense. They cannot be taken apart, or moved except as you would tear apart any dwelling house, or except as you could move any well built frame building. Satisfaction or your money back is guaranteed to every customer.

SPECIFICATIONS

The materials furnished with all Aladdin Summer Cottages will be found listed on page 54. You will note that in accordance with usual practice and customary summer cottage construction, we do not furnish any material for lining the inside of the outside walls or the ceiling. Also, inside trim, stain and varnish is not included. Two coats of high quality paint is furnished for the exterior of all summer cottages. You have your choice of colors. Front and rear outside doors are furnished but we do not include inside doors nor front or rear steps. Due to the fact that the height above ground varies so greatly in summer cottages, it is impractical for us to include steps in our prices. We therefore furnish materials from the sills up, only.

SCREENS

Can be included with any summer cottage shipment at the prices given on the enclosed price list. These prices include galvanized wire screening for porch or porches together with the necessary material to make the porch screen frames, high quality galvanized screen doors for front and rear, full length galvanized wire screens for all windows except those opening on to screen porches and necessary hardware for all screen doors, window screens and porch screens.

PRICES ON SUMMER SCREENS GIVEN ON ENCLOSED PRICE LIST

ASPHALT STRIP SHINGLES

Almost all summer cottages and garages are built with slate-surfaced asphalt roll roofing for the roof covering. For this reason Aladdin Summer Cottages and Garages are priced with roll roofing. However, we occasionally receive a request to substitute slate-surfaced, asphalt strip shingles for the roll roofing and we therefore quote prices on making this change in our specifications. See price list. On account of the low pitched porch roof on the Asbury, Shasta, Genesee, Statler and Shoreview cottages, shingles are quoted on the main roof only, roofing remaining on the porch roofs. Asphalt strip shingles are not quoted for the roof of the La Salle garages for, due to their very low pitched roofs, roll roofing is the only practical roof covering. With the La Salle garages we furnish a special, extra heavy, deck roofing which cannot be improved upon.

FOUNDATIONS

When ordering tell us whether you will build your cottage on a post foundation or a solid wall foundation so that we may furnish you with the proper foundation plan. We do not include foundation materials with any of our summer cottages. Cedar posts can be furnished for Aladdin Summer Cottages at 80 cents each for 8-foot posts or 40 cents each for 4-foot posts.

CHANGES

Our summer cottage partitions can be moved about during construction, practically at will, making it easily possible for you to rearrange the plan or alter room sizes if you wish to do so. We can sell you extra windows, etc., to assist you in making your cottage just exactly as you want it.

COMPARE QUALITY AND CONSTRUCTION WHEN COMPARING PRICE

THE LUNA

From the standpoint of good architecture, splendid room arrangement and comfortable accommodations, the Luna is a summer home of superior qualities, yet it can be erected at a low cost. It is large enough for the average family. The space over the front porch can be used for storage as the porch is ceiled overhead. This storage space is very desirable in a summer cottage. The porch is size 22x8 ft. Plan No. 2 provides a splendid size living room, a kitchen and three good bedrooms. The dimensions of the Luna No. 2 will permit this cottage to be built on a narrow lot. The Luna No. 3 contains three bedrooms, living room, kitchen and large porch. The Luna No. 6 is a big, roomy cottage with four bedrooms, living room and kitchen. The Luna has 4x6 in. built-up sills. The Luna No. 2 and No. 3 have 2x6 in. floor joists on 24 inch centers. The Luna No. 6 has 2x8 in. floor joists on 24 inch centers. The rafters are 2x4 in. on 24 inch centers, the eaves are the exposed type. The height of the interior partitions is 7 ft. 6 in. See specifications page 51.



LUNA No. 2



LUNA No. 3



LUNA No. 6



THE ASBURY

The Asbury is a cozy summer cottage of pleasing lines. The porch can be screened-in to give an outdoor living room. The Asbury No. 1 is the smallest Aladdin cottage. It has a living room and bedroom and it's just as well built as our larger cottages. The Asbury No. 2 is 4 ft. deeper and has three rooms. It's a cute little cottage for the modest demand. Plan No. 3 size overall, 16x22 ft.

The Asbury has 4x6 in. built-up sills, the joists are 2x6 in. on 24 inch centers. The rafters are 2x4 in. on 24 inch centers. The height of interior partitions is 7 ft. 6 in. The roof has a one-quarter pitch. See specifications page 54.

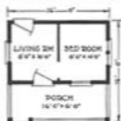
Spend the first few days of your vacation building your own Aladdin Summer Cottage. It's Fun, Easy and economical. Readicut materials and the instructions we furnish make construction fast, simple and accurate.

Shamokin, Pa.
July 13, 1936

Dear Sirs:

We have given our catalog to a friend and kindly request you to send us another in case we need it. We are very much pleased with our cottage and proud to advertise your firm. It is much admired.

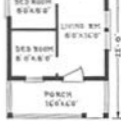
Leon C. Adams



ASBURY No. 1



ASBURY No. 2



ASBURY No. 3

THE OCEAN PARK

The Ocean Park is a unique design and something out of the ordinary in summer cottage architecture. Some fine features are incorporated in the four Ocean Park plan arrangements that will attract folks desiring the utmost comfort in a summer home. The main roof extends over the porch in each design, giving greater ventilation area inside and a place for storage as the porch is ceiled overhead. Plan No. 1 is a two bedroom arrangement, and is priced astonishingly low. Plan No. 2 is the same width but contains three bedrooms and rooms of larger proportions. The Plan No. 3 arrangement contains the inset porch and also two closets. Plan No. 5 is conveniently arranged, having a large living room and dining room, with three bedrooms.

The sills are 4" x 6" built-up. The floor joists are 2" x 6" on 24-inch centers.



See Specifications
Page 54



THE SHASTA

Three sizes and plans are shown for the Shasta, one of our most popular summer cottages. Overall dimensions of Plan No. 1 are 24' x 24', porch, living room, three bedrooms and kitchen make up a very complete cottage. Plan No. 2 is 28' x 25' overall. Note the porch size, 28' x 8'. The interior affords a fine living room, three bedrooms and kitchen. Plan No. 3 is size 36' x 30' overall. A splendid summer cottage of the larger type. The sills are 4" x 6" built-up. The floor joists furnished for the Shasta No. 1 and No. 2 are 2" x 6" on 24-inch centers and for the Shasta No. 3 are 2" x 8" on 24-inch centers. The rafters are 2" x 4" on 24-inch centers. The height of the interior partitions is 8'. See specifications page 54.

See Specifications, Page 59



ALADDIN BUILDING ESTIMATES

EXPLANATION OF FIGURES—The labor figures given below have been carefully compiled from data obtained from actual work under widely varying conditions, covering a period of more than twenty years. They are therefore, average figures, for average work, by average workmen, under average conditions. The price of labor and the cost of masonry materials are not the same in all localities. We are giving you figures from which the cost of construction can be determined fairly accurately by applying your own local prices for labor and masonry materials.

EXCAVATION—Under the heading, "3' Excavation," we give the number of cubic yards of earth necessary to remove in an excavation of that depth. One-third of that amount will be the number of cubic yards in one foot of excavation. If your excavation will be less than three feet or more than three feet you can multiply the number of cubic yards for one foot of excavation by the depth you intend excavating and the resulting figure will give you the number of cubic yards to remove in your particular case. Our figures are based on making the excavation one foot larger each way than the size of the foundation.

FOUNDATIONS—Under the heading, "16" Blocks," we give you the number of concrete blocks of that size necessary for a foundation wall 10 blocks high. As concrete blocks are 8 inches high, a 10 block wall is approximately 7 feet high. If a wall of different height is built, divide the quantities by ten and multiply by the number of blocks high your wall is to be built. If a cellar is not being built under your home, a seven foot wall will not be required. It will only be necessary

to carry your foundation down below the frost line. This is seldom more than 2 to 3 feet below ground or grade line and in many localities is considerably less. Should you use 24" blocks the quantity of blocks required will be one-third less. If a poured concrete foundation wall is to be used, you will find below the number of cubic yards of poured concrete required for each home. As the mix differs in every locality, your local mason dealer can give you the quantities of cement, sand and gravel required for this type of foundation and also quote you prices on the necessary materials for the number of cubic yards of poured concrete listed. The figures are based on a wall 8" thick, not including footings.

PLASTERING SURFACE—Under this heading we give you the number of square yards of surface in the home to be lathed and plastered, and with all openings included.

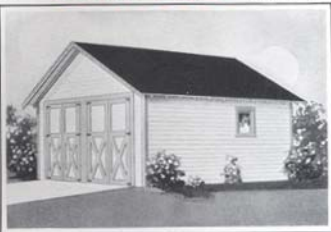
CHIMNEYS—Chimneys and fireplaces are sometimes shown on our plans to suggest a practical location. Since we do not cut the openings in our homes for them, you can change the location or omit them entirely if preferred. The amount of material required for chimneys is as follows:

One 8" x 8" flue chimney, 20 bricks to each foot of height.
Two 8" x 8" flue chimneys, 50 bricks to each foot of height.
One 8" x 12" flue chimney, 35 bricks to each foot of height.
Two 8" x 12" flue chimneys, 60 bricks to each foot of height.
For mortar allow $\frac{1}{2}$ bbl. cement and $\frac{1}{2}$ cu. yd. sand for each 1000 bricks.

NAME OF HOME	Cu. Yds. Excavation 3' Deep	16" Blocks 10 Blocks High	Cu. Yds. Poured Concrete 8" Wall	Carpenter Labor Double Construction		Painting Exterior and Interior		Sq. Yds. Plastering Surface
				Men	Days	Men	Days	
Amherst.....	123	960	21	3	18	1	13	703
Andover.....	100	825	18	3	15	1	10	642
Avalon.....	127	1080	24	2	29½	2	12	872
Bellhaven.....	75	750	17	1	14	1	8½	310
Birchwood.....	90	840	20	1	16	1	9	364
Brewster No. 1.....	109	975	22	1	19	1	10	477
Brewster No. 2.....	108	930	21	1	15	1	9½	420
Capitol.....	118	930	21	1	22½	2	10	868
Cedarwood.....	69	720	16	1	12	1	7½	300
Chatham No. 1.....	87	780	17	1	15	1	6	328
Chatham No. 2.....	91	825	18	1	16	1	7	335
Chatham No. 3.....	89	800	18	1	15½	1	6½	320
Concord.....	106	1020	23	1	18	2	7½	624
Convertible 18"x18".....	41	540	12	1	7	1	5	156
Convertible 20"x20".....	49	600	13	1	8	1	6	179
Cypress.....	115	960	21	1	9½	1	6½	243
Dover No. 1.....	114	945	21	1	15	1	9	411
Dover No. 2.....	131	1028	23	1	19	1	10	485
Edgewood.....	92	795	18	1	24	2	7	667
Elmwood.....	80	780	17	1	13	1	8	363
Fairfield No. 1.....	112	1020	23	1	22	2	7	480
Fairfield No. 2.....	120	1050	23	1	22	2	8	514
Ferndale No. 1.....	125	1050	23	1	22	2	8	507
Ferndale No. 2.....	135	1080	24	1	17	1	9½	345
Gables No. 1.....	95	870	19	1	13	1	8	375
Gables No. 2.....	100	900	20	1	14	1	9	378
Georgian.....	81	780	17	1	18	1	5	583
Hamilton No. 1.....	100	1020	23	1	19	1	7½	617
Hamilton No. 2.....	92	855	19	1	19	1	7	710
Hawthorne.....	111	930	21	1	16	1	9	415
Larchwood D.....	92	840	19	1	14½	1	9	387
Larchwood E.....	97	870	19	1	15	1	10	433
Lexington.....	86	788	17	1	13½	1	9	338
Madison B.....	98	915	20	1	16	1	8	401
Madison C.....	115	1035	22	1	16½	1	11	429
Madison D.....	118	1020	23	1	17½	1	12	491
Maplehaven.....	98	825	18	1	21	2	12	681
Marblehead A.....	100	850	19	1	14	1	6	545
Marblehead B.....	112	1015	20	1	16½	2	8½	695
Marblehead C.....	89	750	17	1	15½	1	11	398
Marshallfield B.....	110	900	20	1	17½	1	10	560
Maryland.....	81	735	16	1	17	1	11	560
Newport No. 1.....	116	990	22	1	19	1	12	432
Newport No. 2.....	123	1050	23	1	20	1	13	460
Oakwood A.....	69	720	16	1	12½	1	8	259
Oakwood B.....	63	690	15	1	11	1	7	255
Oakwood C.....	79	750	17	1	13½	1	8½	300
Oakwood K.....	77	780	17	1	14	1	9	347
Oxford.....	82	810	18	1	17	1	12	640
Pershing No. 1, No. 2.....	80	834	18	1	13	1	8	369
Pershing No. 3, No. 4.....	90	850	19	1	15	1	9	381
Plymouth No. 1.....	69	720	16	1	22½	2	6½	547
Plymouth No. 2.....	81	780	17	1	25	2	7	689
Poplar.....	111	930	21	1	14	1	9	423
Redwood.....	54	630	14	1	9	1	6½	238
Rockport No. 1.....	113	930	21	1	17	1	11	542
Rockport No. 2.....	121	960	21	1	18½	1	12	515
Shelburne.....	129	975	22	1	18	1	12	702
Stratford No. 1.....	101	900	20	1	18	1	10½	607
Stratford No. 2.....	113	960	21	1	21	1	10	712
University.....	132	1110	25	1	24	2	8	512
Vassar.....	203	1865	40	1	14	1	10	586
Virginia.....	101	900	20	1	26	2	9	495
Wellington.....	126	1035	22	1	18	1	14	796
Whitehall.....	57	660	13	1	9½	1	6½	239
Winston No. 1.....	115	945	21	1	14	1	8	420
Winston No. 2.....	71	705	16	1	11½	1	6	265
Winston No. 3.....	56	615	14	1	9	1	3	202

Aladdin garages are made of only the best materials and when completed are sure to please the most critical person. The lumber is entirely cut-to-fit, making erection a short and easy task. Detailed drawings show where each piece of lumber is to be placed and nailed. Aladdin offers the perfect system of buying and building garages. All freight charges paid by the Aladdin Company. Safe delivery and no shortages guaranteed.

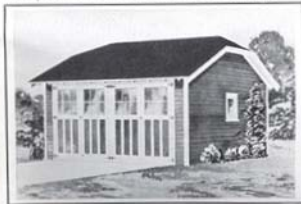
Specifications: Materials of the same high quality as used in Aladdin houses. Sills 4" x 4", studding 2" x 4" on 24-inch centers. Clear and Knotless drop siding for side walls, see illustration of siding on page 54. 2" x 4" rafters on 24-inch centers, roof sheathing laid tight. Best quality green, slate-surfaced, roll roofing. Slate surfaced asphalt strip shingles can be had in place of roll roofing at prices quoted. See Price List. Swinging doors, each pair eight feet wide and seven and one-half feet high, except Ford No. 1 doors 7'4" wide 7'3" high, Ford No. 2, 3 and 4 doors 8' wide, 7'3" high. Garages shown with solid doors can be supplied with glass top doors at \$10.00 per pair additional. Windows furnished when shown in illustration are swinging casements. Hardware for doors and windows, nails and two coats of paint for exterior. Materials Read-Cut. Drawings and instructions for building. All garages furnished without floors as most owners prefer to build floors of cinders or concrete.



THE CADILLAC

- No. 1, 18 ft. wide, 16 ft. deep.
No. 2, 18 ft. wide, 18 ft. deep.
No. 3, 18 ft. wide, 20 ft. deep.
No. 4, 20 ft. wide, 18 ft. deep.
No. 5, 20 ft. wide, 20 ft. deep.

**Prices Given
On Enclosed
Price List**



THE HUDSON

- No. 1, 20 ft. wide, 18 ft. deep.
No. 2, 20 ft. wide, 20 ft. deep.
No. 3 (3 Car), 26 ft. wide, 18 ft. deep.
No. 4 (3 Car), 26 ft. wide, 20 ft. deep.

**Prices Given
On Enclosed
Price List**



THE LASALLE

- No. 1, 18 ft. wide, 16 ft. deep.
No. 2, 18 ft. wide, 18 ft. deep.
No. 3, 18 ft. wide, 20 ft. deep.
No. 4 (3 Car), 26 ft. wide, 18 ft. deep.
No. 5 (3 Car), 26 ft. wide, 20 ft. deep.

**Prices Given
On Enclosed
Price List**



THE STUDEBAKER

- No. 1, 12 ft. wide, 16 ft. deep.
No. 2, 12 ft. wide, 18 ft. deep.
No. 3, 12 ft. wide, 20 ft. deep.

**Prices Given
On Enclosed
Price List**



THE FORD

- No. 1, 8 ft. wide, 14 ft. deep.
No. 2, 10 ft. wide, 16 ft. deep.
No. 3, 10 ft. wide, 18 ft. deep.
No. 4, 12 ft. wide, 18 ft. deep.

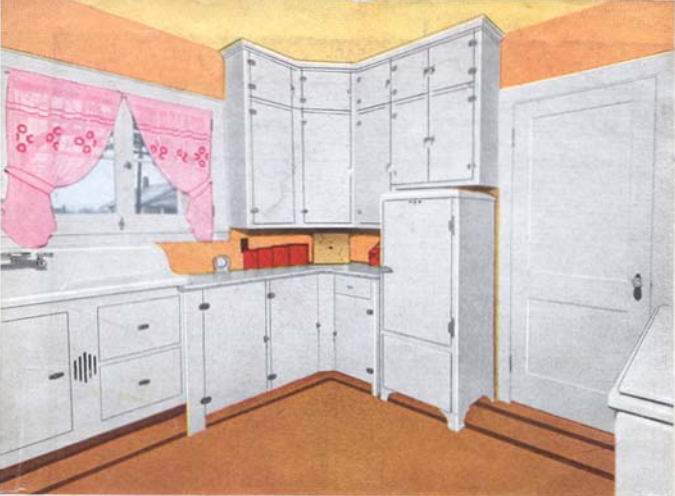
**Prices Given
On Enclosed
Price List**

HOUSE	PAGE	HOUSE	PAGE
Amherst	37	Convertible	41
Andover	34	Cypress	16
Avalon	42	Dover	28
Bethaven	52	Edgewood	21
Birchwood	48	Elmwood	53
Brewster	14	Fairfield	53
Capital	52	Fernside	46
Cedarwood	29	Gables	32
Chatham	26	Garners	63
Concord	29	Georgian	11

INDEX

HOUSE	PAGE
Hamilton	18
Hawthorne	17
Larchwood	16
Lexington	23
Madison	39
Maplehaven	5
Marblehead	43

HOUSE	PAGE	HOUSE	PAGE
Marshall	26	Shelburne	13
Maryland	49	Stratford	40
Newport	27	Summer Cottages	54-61
Oakwood	19	University	22
Oxford	30	Vassar	33
Pershing	10	Virginia	44
Plymouth	25	Wellington	21
Poplar	12	Whitehall	41
Redwood	45	Winston	47
Rockport	29		



Brewster Kitchen

The above photograph shows the kitchen of the Brewster which is described on page 14. Cabinet work of this type is furnished by us on special order to fit the kitchens of any Aladdin Houses. Photograph of other kitchen cabinets are also shown on pages 31 and 51.



Typical bathroom showing the attractive use of colors, the walls being either glazed tile or plaster marked off and glazed with colorful enamel.

Beautifully designed front entrance furnished with the Maplehaven, page 35, can be ordered for any Aladdin house.

FREIGHT PAID PRICE LIST

— FOR —

Aladdin Houses and Summer Cottages

There is NO Substitute for Quality



The Dollar A Knot guaranty is proof beyond doubt that Aladdin furnishes only the finest grades of lumber in Aladdin homes. The economies of the Read-i-Cut System in waste saving makes it possible for us to supply the finest materials at a lower cost than ordinary grades.



This Trade-Mark is one of the most important features to look for when purchasing hardware.

It is unnecessary for one to know the detail of lock construction in order to purchase a secure and dependable lock as this Trade-Mark Yale is acknowledged as a symbol of the utmost dependability in locks of every description. Ninety-six years in the lock business.



For nearly 100 years, Pratt and Lambert have been making the very highest grade paint products. Painters and home owners who have used these products know that they possess the greatest degree of durability and covering capacity, and that they give lasting beauty and protection. Pratt and Lambert qual-

ity is a worthy companion to Aladdin Dollar-A-Knot Quality.



The United States Gypsum Company is one of the largest manufacturers of wall boards, plaster boards, insulating boards and plaster products in the world. The Aladdin Com-

pany has been doing business with the United States Gypsum Company for over twenty-six years. What greater proof of quality and satisfaction could be offered?



ASPHALT SHINGLES AND ROLL ROOFING

More than three-quarters of a century's experience has taught The Barrett Company how to build the greatest amount of durability, fire-safety, beauty and weather protection into roofs. All Barrett's splendid facilities, felt mills, refineries, factories, laboratories and manufacturing skill—contribute to make these products the best it is possible to produce.

Chase Copper

Chase copper flashing is furnished for all outside doors and windows in all Aladdin houses, and the same copper flashing is furnished for roof valleys where wood shingles are specified. No finer material than copper can be used for flashing against rain and snow.



ALBRON

Alcoa Albron Aluminum is manufactured only by The Aluminum Company of America and marketed under the adjacent trademark. Our aluminum paint undercoat gives a metal sheath of protection to your house and makes a perfect foundation for the two finishing coats of fine paint on the exterior—three coats of paint on your Aladdin.

Freight Paid Price List on Aladdin Homes

HOUSES		Double Construction Freight Paid Price	Porch Freight Paid Price	Wood Lath Freight Paid Price	Rocklath Freight Paid Price	Wallboard Freight Paid Price	Wood or Asphalt Strip Shingles instead of Roofing
Name of House	Page						
Amhurst	37	\$2446	\$108	\$178	\$308	included
Andover	34	2342	98	163	284	included
Avalon	42	3057	included	125	207	362	included
Belhaven	52	1099	44	75	131	50
Birchwood	48	1129	119	54	90	157	48
Brewster	14						
No. 1	14	1598	included	61	102	178	included
No. 2	14	1592	included	60	100	175	included
Capitol	52	2564	70	120	200	350	included
		Porte Cochere	\$ 57				
Cedarwood	20						
Plans A-C-E	20	891	119	42	84	126	37
Plan D	20	898	119	43	86	129	37
Chatham	36						
No. 1	36	1317	50	83	141	included
No. 2	36	1356	51	85	146	included
No. 3	36	1341	50	83	142	included
Concord	39	2039	97	160	274	included
Convertible	41						
No. 1	41	537	22	44	66	21
No. 2	41	615	27	54	71	24
Cypress	16	707	99	32	63	95	31
Dover	28						
Plan A	28	1781	62	103	186	included
Plan B	28	2014	75	124	224	included
Edgewood	21	2249	99	99	168	293	included
Elmwood	53	982	89	47	94	141	45
Fairfield	53						
No. 1	53	1996	included	69	115	201	included
No. 2	53	2085	included	74	123	215	included
Ferndale	46						
No. 1	46	1811	75	129	225	included
No. 2	46	1904	79	134	234	included
Gables	32						
No. 1	32	1432	57	94	165	included
No. 2	32	1459	58	97	170	included
Georgian	11	1899	88	147	250	included
Hamilton	18						
No. 1	18	2070	89	149	261	included
No. 2	18	1739	80	133	233	included
Hawthorne	17						
Plans A-D-G	17	1270	159	63	108	189	61
Plans C-F	17	1336	159	64	110	192	61
Larchwood	16						
Plan D	16	1162	99	56	93	162	49
Plan E	16	1220	99	59	98	171	51
Lexington	23						
No. 1	23	1374	included	51	84	143	included
No. 2	23	1365	included	50	82	140	included
Madison	9						
Plan B	9	1494	55	94	164	included
Plan C	9	1614	63	109	191	included
Plan D	9	1725	69	118	207	included

TERMS
PAGE
SEVEN

At These Prices We Guarantee to Deliver You E

Double Construction—All homes shown in this 1937 Catalog are priced in double construction only. With double construction sub-floor sheathing and building paper are furnished to use under the finish flooring and wall sheathing and building paper are included to use under the siding or shingles on the outside walls. Double construction provides you with the sturdiest and soundest type of construction known to building engineers.

Porches—Where possible, porches are priced separately so that you can purchase the home without the porch, or select a porch that is shown on some other home in the catalog. The porch price includes the complete materials, except masonry materials.

Wood Lath—The price quoted includes the necessary wood lath and lath nails for all walls, partitions and ceilings, also plaster grounds around inside door openings and the baseboard.

Rocklath—United States Gypsum Rocklath is 5/8 inches in thickness and is made in sheets 16 inches wide and 48 inches long. The Rocklath price for each home includes the necessary nails for applying it. Rocklath has reinforced folded edges for maximum strength and nail-holding power and is fire-proof. Plaster clings to Rocklath more tightly than to any other type of lath. The convenient size sheets makes it easy to apply and when using it for a plaster base, you are assured of the finest kind of

Freight Paid Price List on Aladdin Homes

HOUSES

Name of House	Page	Double Construction Freight Paid Price	Porch Freight Paid Price	Wood lath Freight Paid Price	Rocklath Freight Paid Price	Wallboard Freight Paid Price	Wood or Asphalt Strip Shingles Instead of Roofing
Maplehaven	35	2436	Garage not inc.	102	170	300	included
Marblehead	43						
Plan A	43	1932	-----	84	141	241	included
Plan B	43	2193	-----	107	181	305	included
Marshfield	26						
Plan A	26	1428	included	58	96	168	76
Plan B	26	1631	included	67	111	194	83
Maryland	49						
Plan A	49	1860	included	76	127	220	included
Plan B	49	1848	included	75	125	218	included
Newport	27						
No. 1	27	1811	included	69	117	206	included
No. 2	27	1837	included	74	125	214	included
Oakwood	19						
Plan A	19	803	-----	40	81	122	35
Plan B	19	828	-----	42	85	128	37
Plan C	19	863	-----	43	87	131	40
Plan K	19	992	-----	47	95	143	42
Oxford	30	2319	-----	99	165	289	included
Pershing	10						
Nos. 1-2	10	1162	-----	55	92	161	51
Nos. 3-4	10	1218	-----	57	95	166	51
Plymouth	25						
No. 1	25	1858	Front Porch in price				
		Side Porch \$ 70		83	138	242	included
No. 2	25	2113	Front Porch in price				
		Side Porch \$ 70		94	156	273	included
Poplar	12						
Plan C	12	1306	70	59	98	171	61
Plans D-F-G	12	1348	70	61	100	175	61
Redwood	45	730	-----	34	68	103	31
Rockport	29						
No. 1	29	1654	-----	61	100	180	included
No. 2	29	1826	-----	68	113	200	included
Shelburne	13	2785	-----	100	166	297	included
Stratford	40						
No. 1	40	2029	-----	82	137	240	included
No. 2	40	2362	-----	97	162	284	included
University	22						
No. 1	22	2044	-----	70	114	199	included
No. 2	22	2183	-----	76	124	217	included
Vassar	33						
No. 1	33	2126	-----	87	146	258	included
No. 2	33	2184	-----	94	156	271	included
Virginia	44						
Nos. 1-2	44	1363	-----	59	97	170	49
Wellington	24	3259	-----	106	175	295	included
Whitehall	41						
Plans D-F	41	710	-----	35	70	106	33
Plan G	41	699	-----	33	67	102	33
Winston	47						
No. 1	47	1562	included	64	104	180	included
No. 2	47	988	included	40	82	123	39
No. 3	47	810	included	31	63	95	31

h Material to Complete Your House as Specified

TERMS
PAGE
SEVEN

a plaster job. Plaster grounds are included in the price quoted for Rocklath.

Wall Board—United States Gypsum Weatherwood Wall Board provides strength and high insulation value for your home. It is full 1/4 inch thick and is furnished 4 feet wide and in lengths of 8, 9, 10, 12 feet, to suit the particular home selected. Any kind of a decorative treatment can be used or it can be left in its attractive Cream color. Nails included.

Roof Covering — Barrett's green, slate surfaced asphalt roll roofing is specified for many homes, but if you wish shingles, we will furnish them at the separate prices quoted. If shingles for the roof are included, we will furnish your choice of No. 1 Red

Cedar Wood Shingles or Barrett's Hexagonal Asphalt Strip Shingles. Nails, flashing, etc., are included in the price quoted for roof covering.

Freight Paid Prices—The freight paid prices quoted on this price list apply for shipment into the States of Michigan, Ohio, Pennsylvania, New York, Minnesota, Wisconsin, Iowa, Missouri, Illinois, Indiana, Kentucky, West Virginia, New Jersey, Connecticut, Massachusetts, New Hampshire, Vermont, Maine, Rhode Island, Maryland, Virginia, Tennessee, Delaware, Washington, Oregon, California, Montana, Idaho, Utah, Nevada, Wyoming, and Colorado.

Detailed Specifications for Any Home will be mailed on request.

Freight Paid Order Blank

Order to

THE ALADDIN COMPANY

The Oldest and Largest Manufacturers of Read-Cut Houses in the World

BAY CITY, MICHIGAN

Please Ship Plan Page \$
(Give Name of House or Summer Cottage)

Price of Porch (if wanted) \$

Wood Lath [] Rock Lath [] $\frac{1}{2}$ " Insulating Wallboard [] \$

No. 1 Red Cedar Wood Shingles [] or Green Hex Butt Asphalt Strip
Shingles [] \$

Closet Doors (See Catalog Page 50) \$

Cellar Windows (See Catalog Page 50) \$

Galv. Window Screens [] Storm Sash [] Combination Doors [] \$

Select Oak Flooring \$

Kitchen Cabinets \$

..... \$

..... \$

..... \$

..... \$

..... \$

..... \$

..... \$

Total \$

SHIPPING INSTRUCTIONS

Ship to
Town
County State
Ship on
(If no choice we select best route)
Is there a Freight Agent there?.....
When is shipment wanted?.....
(If you do not know, state HOLD and notify us later)

ORDERED BY

Name
Address
County
State Date
Enclosed

Check	[]
Draft	[]
Money Order	[]

 For \$.....

Do not write in this space

Kind of Foundation

Solid Wall [] Post []

Outside Body Paint

(Color)

Outside Trim Paint

(Color)

Color of Stain for Inside Trim
and Doors or Color of Cellutone
Enamel for Trim and Doors.....



ECONOMY Low Cost Homes

To meet an insistant demand for a house especially designed for the ut-
most in simplicity, economy and low cost, we are offering our Economy Low Cost Home design here.

Cost is reduced to the last penny possible, while furnishing a sturdy house. The lumber used is of the same grades supplied for regular Aladdin houses.

Three floor plans are shown in the 16x20 ft. size, four floor plans for the 16x24 size and four plans for the 16x30 size — eleven plans. Prices quoted include freight in each case.

Fireplace chimney need not be built unless desired, as we do not cut the materials for chimney opening

SPECIFICATIONS — ECONOMY HOUSE

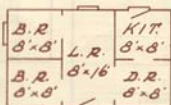
Price includes lumber cut to fit, bevel siding, flooring, roofing, windows, outside doors, interior cased arches, hardware, glass, paint, stain and varnish, nails, complete drawings and instructions.

Sills outside 4x6, inside 6x6. Floor joists 2x6, 16 o. c. All wall and partition studding 16 o. c. Ceiling joist 2x4, 16 o. c. Rafters 2x4, 24 o. c. Ceiling Height 8 ft. Single floors and walls.

	Freight Paid Prices	Freight Paid Wall Board	
Economy Plan A	\$423	\$ 67	L. R. 2 B. R.
Economy Plan B	523	87	KIT. 10'x16'
Economy Plan C and D	623	107	10'x16'



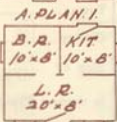
B.PLAN.1.



B.PLAN.2.



A.PLAN.2.



A.PLAN.3.



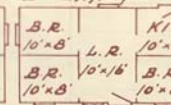
B.PLAN.3.



B.PLAN.4.



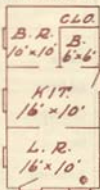
C.PLAN.1.



C.PLAN.2.



D.PLAN.1.



D.PLAN.2.

Summer Cottage and Garage Prices

SUMMER COTTAGES

Name of Cottage	Page	Price of Cottage Freight Paid	Price of Screens Freight Paid	Wood or Asphalt Shingles Instead of Roofing
Asbury	60			
Plan No. 1.....	60	\$295	\$18	\$11
Plan No. 2.....	60	352	18	17
Plan No. 3.....	60	379	18	21
Bar Harbor	58			
Plan No. 1.....	58	1224	52	64
Plan No. 2.....	58	908	43	46
Genesee	56			
Plan No. 1.....	56	515	26	26
Plan No. 2.....	56	546	32	29
Plan No. 4.....	56	669	34	34
Hunters' Lodge	57			
Plan No. 1.....	57	216	7	15
Plan No. 2.....	57	248	7	17
Plan No. 3.....	57	299	7	22
Lake Louise	55			
Plan No. 1.....	55	975	60	49
Plan No. 2.....	55	1044	61	50
Long Beach	55			
Plan No. 1.....	55	746	48	39
Plan No. 2.....	55	879	52	48
Plan No. 3.....	55	788	53	40
Luna	60			
Plan No. 2.....	60	585	29	37
Plan No. 3.....	60	602	29	40
Plan No. 6.....	60	739	33	51
Ocean Park	61			
Plan No. 1.....	61	523	30	32
Plan No. 2.....	61	569	30	36
Plan No. 3.....	61	714	34	45
Plan No. 5.....	61	664	32	43
Seaford	57			
Plan No. 2.....	57	632	37	35
Plan No. 3.....	57	716	37	43
Shasta	61			
Plan No. 1.....	61	565	32	30
Plan No. 2.....	61	652	34	31
Plan No. 3.....	61	915	43	46
Shoreview	56			
Plan No. 1.....	56	377	20	18
Plan No. 3.....	56	606	27	33
Plan No. 4.....	56	480	23	26
Statler	57			
Plan No. 2.....	57	465	23	24
Plan No. 3.....	57	463	23	24

THE FREIGHT PAID PRICES QUOTED ON GARAGES APPLY ONLY WHEN PURCHASED FOR SHIPMENT WITH AN ALADDIN HOME. WE DO NOT SELL GARAGES SEPARATELY.

GARAGES

Name of Garage	Price of Garage Freight Paid	Wood or Asphalt Strip Shingles Instead of Roofing
Cadillac		
No. 1	\$169	\$20
No. 2	180	23
No. 3	195	26
No. 4	197	26
No. 5	206	27
Ford		
No. 1	85	10
No. 2	103	14
No. 3	112	14
No. 4	127	16
Hudson		
No. 1	205	27
No. 2	216	29
No. 3	249	31
No. 4	269	33
La Salle		
No. 1	175	
No. 2	185	
No. 3	199	
No. 4	244	
No. 5	259	
Studebaker		
No. 1	125	15
No. 2	132	19
No. 3	142	20

GARAGE SPECIFICATIONS Page 63

IMPORTANT NOTICE

Because of advancing market prices on all building materials, prices are subject to advance April 15th, July 15th and September 15th.

COMPLETE SUMMER COTTAGE SPECIFICATIONS — Page 54

THE ALADDIN COMPANY

MANUFACTURERS OF ALADDIN READI-CUT HOUSES

Home Offices and Mills
BAY CITY, MICHIGAN

Branch Office and Mill
PORTLAND, OREGON

1937