

ALADDIN



READI-CUT HOMES

(NOT PREFABRICATED)

THE ALADDIN COMPANY OF BAY CITY, MICHIGAN, WAS FOUNDED FORTY-FIVE YEARS AGO 1951



INDEX

Alamo	Page	House	Page	House	Page	House	Page
Alamo	16	Concord	31	Ivywood	41	Palm Springs	13
Atlanta	18	Conoma	22	Lexington	4	Palo Alto	27
Birchwood	26	Del Mar	8	Parkway	32	Rosewood	14
Brentwood	5			Madison	23	Shelburne	25
Brewster	29	El Paso	21	Magnolia	21	Summerset	30
Briarcliff	24			Merlot	6	Sunshine	7
Brookline	11	Gables	26	Newport	36		
Cedars	39	Greenwich	28	Norfolk	15	Redwood	9
						Winston	

**SAVE FOUR
PROFITS
ON THE**

LUMBER, MILLWORK, HARDWARE AND LABOR

45 Years of ALADDIN Success

Here are twelve Aladdin workers who have been continuously working with the Company for over thirty years. They are ready to work for you and with you in building your home.



W. J. SOVEREIGN—45
President



H. V. WHITE—31
Ass't Gen. Mgr.



A. I. LAMB—37
Sup'y of Production



O. E. SOVEREIGN—45
Treas. and Gen. Mgr.



OTTO PIERCE—38



A. PERMODA—35



G. PORTER—30



B. ANDREWS—38



Z. BURGESSON—31



I. BRAUER—30



F. LUTZKE—40

ALADDIN ORIGINATED THE READI-CUT SYSTEM OF HOME BUILDING

THE ALADDIN COMPANY was founded forty-five years ago by W. J. Sovereign and O. E. Sovereign who perfected and established the First Read-cut System of Home Building in the world.

Today, as in the past, the company is still managed and owned by these two brothers. Customers of forty-five years ago may write to The Aladdin Company today and know that the management is unchanged, and that they are writing to and dealing with old friends. Their vast experience in the wants and needs of homebuilders, in the choice of the best materials for their use, in the preparation and manufacture of the lumber is of tremendous value to every customer of Aladdin. The Sovereign Brothers are ready to give you their personal time and assistance to guard you from the mistakes so often made by inexperienced homebuilders. This service costs you not one cent extra. It is included as a part of every Aladdin transaction.

The Read-cut System as originated by The Aladdin Company has been approved by the United States Government, the Michigan State Government, and hundreds of big corporations by large purchases of Aladdin Houses. This company manufactured and shipped the first complete read-cut home built in the world.



V. LEPEAK—41

WHAT YOU GET WHEN YOU BUY AN ALADDIN READI-CUT HOUSE

A careful reading of the following will give you a clear idea of the completeness of materials and equipment which are included in the price of Aladdin Houses.

You also receive our forty-five years of home building experience to guard you against mistakes of any kind. It has taught us the best construction methods, the best materials to use, the best way to prepare the building plans so every step of erection can be followed even though you have had no previous experience in building. And to complete our service to you, we guarantee that you will receive sufficient of all materials to complete your home according to the plans and specifications.

Read the Following Carefully:

Foundation wall plates cut to fit.
Foundation Sills cut to fit.
Floor Joists cut to fit.
Floor Joist Bridging cut to fit.
Sub Floor Sheathing cut to fit.
Wall Scaffolding cut to fit.
Wall Sheathing cut to fit.
Partition Studding cut to fit.
Ceiling Joists cut to fit.
Rafters cut to fit.
Roof Sheathing cut to fit.
Water Proof Building paper between sub and finished floor.
Finish Floor Tongued and Grooved.
Water Proof Building paper between wall sheathing and siding.

Siding squared ready to fit against eaves and outside finish.
Cedar shingles or asbestos shingles instead of siding if preferred.
Outside finishing lumber cut ready for fitting.
Crown, bed, cove and quarter round moldings.
Window frames complete with inside and outside trim.
Glass in window sash ready to hang.
Window and door trim.
Door frames complete with inside and outside trim.
Doors—Interior and Exterior.

Baseboard and base shoe for all rooms.
For two story houses stairways, treads, risers, stringers, newel posts, balusters, molding, etc.—based ready for erection.
Cellar Stairs where shown—all materials cut to fit.
Nails of proper size.
Lock sets.
Door Hinges.
Double acting door set where shown.
Metal Door Bumpers.
All window hardware complete.
Slate surfaced asphalt shingles.
Valley flashings as needed.
Paint—three coats. Finish coats any colors desired.

Turpentine, Putty and Oil.
Interior stains—one coat—Floor and Interior Woodwork.
Interior Varnish—two coats—Floor and Interior Woodwork.
Porch Sills, porch flooring, steps, columns, balusters and porch roof sheathing and ceiling cut to fit.
Foundation plans and foundation instructions.
Complete set detailed blueprints showing every step of erection.
Copyrighted book of printed instructions and illustrations describing every step in erecting and completing the house.

ALADDIN Enters FORTY-FIFTH Year of Manufacturing READI-CUT HOMES



The ALADDIN Organization's Long Experience Means the Perfection of Machine Production, Saving of Labor on the Job and Elimination of Waste of Materials.

ALADDIN SYSTEM IS BUILT ON THIS PRINCIPLE

Modern power-driven machines can do BETTER work at a lower cost than hand labor. Then every bit of work that CAN be done by machine SHOULD be so done. The steel worker with a little hack-saw trying to cut and fit the steel girders of the modern skyscrapers should be no more out of place than the modern carpenter cutting sills, joists, and rafters. The skyscraper framework is cut to fit by machines in the steel mills, marked and numbered ready for erection.

The lumber in the Aladdin houses is cut to fit by machines in the Aladdin mills, marked and numbered ready for erection. The steel system is over sixty years old—the Aladdin system over forty years old.

An Aladdin Read-cut Home saves you from twenty to thirty percent in your labor bill because the carpenter does not have to spend his time working out the construction details, and cut all the lumber by hand. Our complete drawings

give him construction details that have been proven the best over a period of over forty years. When building the Aladdin Way, you save all the time used by a carpenter

in measuring, cutting, trying and fitting, because all of this work has been done in our factory by modern machines. A machine cut Aladdin home is better built, stronger and more substantial and it will give you a lifetime of satisfaction.

Standard size materials save waste. We save you eighteen percent in waste because our homes are designed to use standard sizes and lengths. Also all mill work, doors, windows, etc., are manufactured to standard sizes thus making it possible for us to produce them in tremendous quantities. Naturally with the large production and modern factory manufacturing methods, we effect a saving for you on all of the items entering into the construction of your home. All lumber used in Aladdin homes is standard size as adopted by The National Association of Lumber Manufacturers.

Volume the Magic Word

The first rule in the decalogue of manufacturing is: To lower the cost, divide the several parts of the labor employed into simple, specialized, mechanical operations.

But this won't work without the mystic word,

And that word is "VOLUME!"

Your local contractor may build ten houses a year. Could he afford to invest \$50,000 in machinery to lower his cost on the ten houses twenty per cent?

"Volume" of business makes possible the highly specialized machinery found throughout the Aladdin mills; makes practical the investment of \$10,000 in a single machine which will lower the cost \$5.00 on a house!

But that \$5.00 is multiplied twenty to thirty times on each house and it saves every buyer of an Aladdin from \$1.00 to \$2.00 on construction cost alone.

Quantity Buying

Because of the tremendous amount of building materials we purchase each year, we are in a position to buy at the lowest possible prices. The large quantity purchased makes it possible for us to obtain prices far lower than any company or individual who has a demand for only a few homes each year.

When the finest grades of materials are used, you are assured of the highest kind of an investment in your home. We never, in any case, sacrifice quality for price or profit. Aladdin Certified Lumber is guaranteed to be satisfactory.



Showing Simple Plan of Laying Out Materials

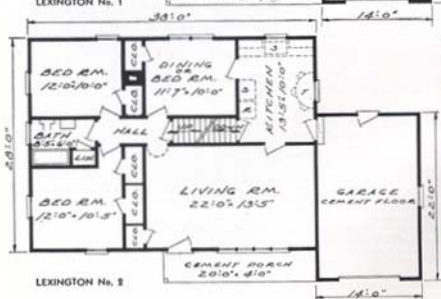
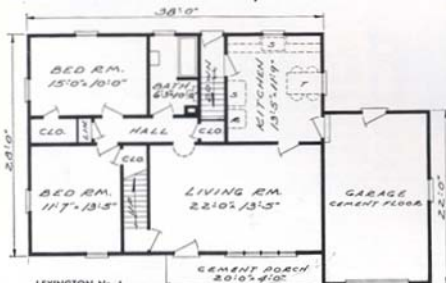
One of the most amusing remarks made is that the builder of an Aladdin home will lose as much time hunting out his material and finding the right pieces as he will save by the Read-cut System. Any thought about time lost in hunting for pieces will be found untrue when you see the simple system of laying out materials given in our Instruction Book with every home.



THE LEXINGTON — Adapted from Colonial Times —

Price Given
On Enclosed
Price List

WE PAY THE
FREIGHT



The traditional simplicity and economy of early New England settlers inspired the architectural plans or designs of their rugged homes. Colonial homes are still sturdy and remain as sound as when built two hundred or more years ago. Aladdin designers have truthfully followed the functional form while incorporating the modern features of picture window and attached garage. Two plans are presented for your choice, one with two bedrooms and one with three bedrooms. There is ample reason to believe that the high quality of all Aladdin materials will give a life to your Aladdin home comparable to that of the first Colonial homes. If you desire to finish off the second floor for two bedrooms, write us for plans and prices. Write for detail specifications and further information.



Aladdin Dining Room
In Full Color

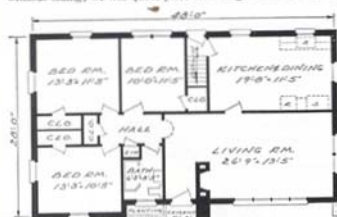


THE BRENTWOOD—One of ALADDIN'S Newest—

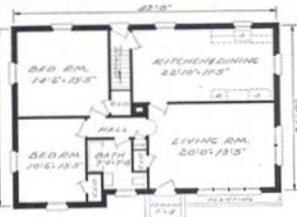
Price Given
On Enclosed
Price List

WE PAY
THE
FREIGHT

Approached from any side, here is a home of impressive beauty. Our designers were inspired by the inclination of present-day home builders for well-proportioned dignity—with simple embellishment. The gabled projection of the bedroom creates a pleasant break in both the front wall and the otherwise plainness of an unbroken roof. Note the main eaves at the front which afford protection to the front entrance door. And the living room is beautiful with an exceptionally large picture window. Four plans are shown, two of two bedrooms and two of three bedrooms. Ample space is available in the kitchen for a dining table. This Aladdin Home is shown in brick veneer and priced without siding; we will quote price for siding for the outside walls. Write for specifications.



BRENTWOOD No. 1



BRENTWOOD No. 2



BRENTWOOD No. 3

BRICK VENEER

The Brentwood shown above is the only home in our Catalog priced without siding or shingles for the outside walls and shown in brick veneer. We do not include brick or masonry materials of any kind. If you do not



BRENTWOOD No. 4

wish to use brick veneer on the Brentwood and prefer wood siding as shown in the illustration on page 34, write us. Write us for the allowance for omission of siding, paint and nails if you wish to veneer the exterior with brick. We do not furnish any of our homes having solid masonry exterior wall, such as solid brick, concrete blocks or stone.



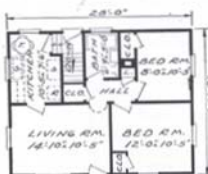
THE MT. VERNON—A Typically Modern and Economical Design—

Price Given
On Enclosed
Price List

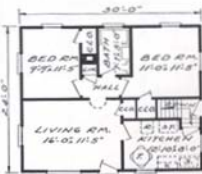
This modest but beautiful home is one of our most popular. Its simplicity of form, its cleanliness of lines and its perfect proportions fill all observers with enthusiasm and admiration. It will measure up to its surroundings wherever built. Its choice of three sizes is shown below for the Mt. Vernon, each plan to express the best features of model interiors. Plan 2 is 28' wide and has a depth of 22'. A generous sized living room affords excellent wall space for your furniture. The kitchen arrangement admits the placing of dinette table and chairs. Two conveniently placed bedrooms with four closets and bath complete the plan. Plan 4 is the same size as Plan 2 and is designed for those not wishing to have a basement. A storage or utility room is provided in this arrangement. The largest of the three, Plan 3, is 30x24' and with all the foregoing and added features offers rooms of proportionately larger sizes. The Mt. Vernon is proving to be one of our most popular homes. Write us about it. We will send you detail specifications.

**WE PAY
THE
FREIGHT**

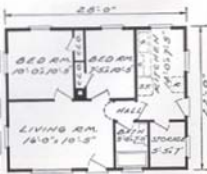
**You Save When You Build The ALADDIN
Way Because Factory Cutting and
Fitting Reduces The Labor Cost 30%
and Lumber Waste 18%**



PLAN No. 1



PLAN No. 3



PLAN No. 4



THE SUNSHINE — Classic Simplicity —

Price Given
On Enclosed
Price List

WE PAY THE
FREIGHT

"Effectively efficient" aptly describes the architecture and planning of all three arrangements and sizes shown below. The front elevation is interestingly planned with the projecting gable and picture windows. The roof is a third pitch, giving adequate attic space, especially true when our folding stairway is installed in the hall ceiling. Plan "D" hallway will not accommodate folding stair.

Remarkable utilization of space is evidenced in each of the three sizes—22'x30', 24'x32' and 24'x34'. The plan "E" incorporates three bedrooms, each with adequate closet. Linen closets are arranged in each plan. Plan to do part of the work of erection and you will save a substantial part of the cost. The Aladdin Read-cut System simplifies the work astonishingly. Write for detail specifications, and further information.



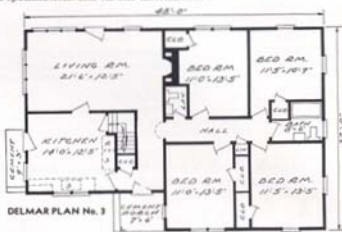
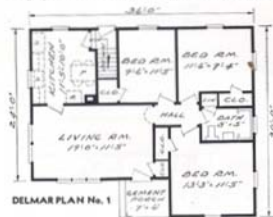


THE DEL MAR—Ultra Modern—

Price Given
On Enclosed
Price List

WE PAY THE
FREIGHT

Aladdin is proud to present this exquisitely beautiful and refreshingly modern home—newly conceived and planned by our designers. The picture above merits a thorough study of its many engaging features. Contrast is achieved in the outside elevation by using perpendicular siding, fronting and next to the front door. The entrance is protected by the main roof projection. An ornamental metal supporting column graces the approach. Note that the mullioned bedroom windows are placed high to afford increased and usable wall space underneath them. A graceful hood of appropriate design protects the kitchen entrance. Write us for detail specifications and further information.



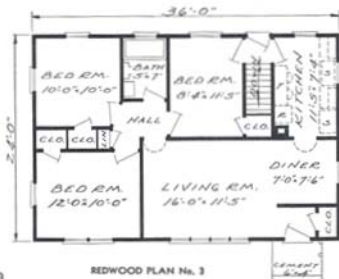


THE REDWOOD—As New, Modern and Fresh as Tomorrow's Sunrise

If you made a trip through New England these days, you would discover the increasing popularity of the old time decorative schemes for both new and old houses—the dark red body paint with pure white trim. Thus we show the Redwood above. Of course you may have any colors that you prefer. All three plans here are adapted for narrow lots, or the house may be placed fronting the long way. Large picture window is incorporated in each plan and the siding, part horizontal and part perpendicular, lends an interesting contrast. Write for detail specifications. Prices on enclosed price list. We pay the freight.

ALADDIN'S MATCHLESS GUARANTEE

What Induces Us to Supply Such Matchless Quality? Aladdin believes the modest home merits the same goodness as the mansion. We have nailed Aladdin quality on the highest attainable pinnacle and have kept it there. While these are excellent reasons for the careful, thinking home buyer, the real undebatable reason is summed up in the goodness, soundness and the thoroughness of the quality of Aladdin Houses. Aladdin's Guarantee: Satisfaction or your money back.





THE WINSTON—Distinctive Exterior—

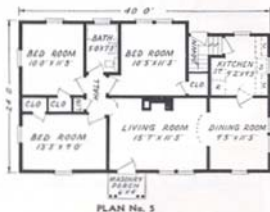
Price Given
On Enclosed
Price List

WE PAY THE
FREIGHT

One of the best developments in plastic building materials is the Cement-Asbestos wall shingle which is pictured above on the side walls of the Winston. These shingles are 24x12 inches in size, fireproof and never have to be painted. We can, of course, furnish them in place of siding for any Aladdin house. Write for information.

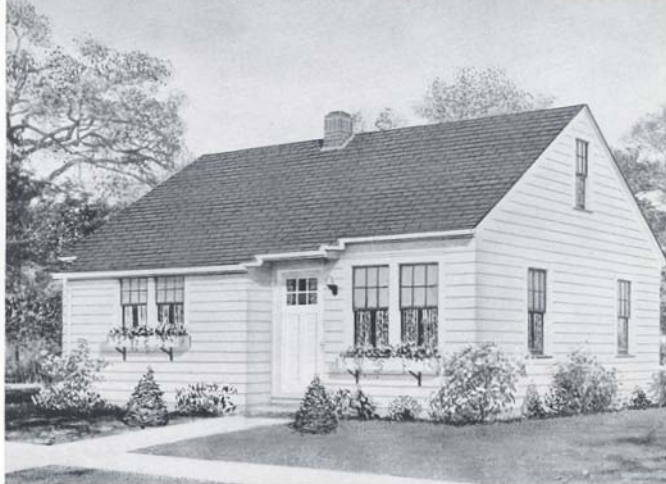
The Winston is one of our best designs and we present it in two attractive sizes. A special feature of this home is the original columned entrance rising from a masonry terrace. A study of the floor plans below will show you a choice of size and design that covers a wide range of investment. Plan No. 1 is 40x24 feet over-all and includes large living room, sun room, dining nook, kitchen, grade cellar entrance, two bedrooms, bath and closets. Fireplace may be omitted if not desired. Plan 5 will warrant careful study to appreciate the desirable features. Write us about the plan that appeals to you. Complete detail specifications mailed on request.

QUALITY ENDURES THRU THE YEARS



PAY YOURSELF THOSE HIGH WAGES

The savings after building a modest home will add more
to your happiness than the luxury of a big home



THE BROCKTON—Warmly Hospitable—

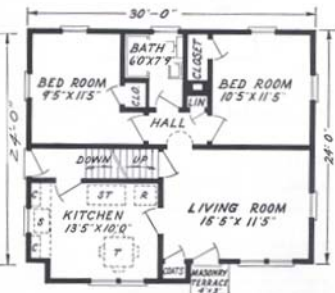
Price Given
On Enclosed
Price List

WE PAY THE
FREIGHT

The Brockton is one of the most popular small homes of the past year. A careful study of its interior arrangement reveals the last word in comfort, convenience and efficiency. Ample wall space and cross ventilation have been accomplished in every room by our designers. Note that it contains four closets. Two plans are presented, both

plans show a cellar stairs where a basement is part of the owner's wishes. A stairway leads from living room to second floor in plan No. 4, which offers a world of added space. Our price does not include flooring or partitions for the second floor but these things can be added now or later if desired. Write us for detail specifications.

SOLD BY THE GOLDEN RULE FOR FORTY-FIVE YEARS





THE PASADENA—For a Narrow Lot—

Price Given
On Enclosed
Price List

WE PAY
THE
FREIGHT

Here is a home of ultra-modern design that can be placed either way on your lot. Frontage required can be as narrow as forty feet, or when placed the long way on your site, can still occupy a fifty foot lot. Take especial note of the large picture window, in size,



PLAN No. 1



PLAN No. 2

from floor to ceiling. You may have this window either as shown in the photo above or we will transpose it to the rear of the living room and place the mullion window, now in the back, at the end of that room. Plan No. 2 provides three bedrooms although it is the smaller of the two plans. Specifications will be furnished on request. Write us.

ALADDIN READI-CUT HOUSES, SOLD BY THE GOLDEN RULE

Sayville, L. I., N. Y.

Martins Ferry, Ohio

Dear Mr. Sovereign:

We have been working on our El Paso #3 six weeks next Saturday. We have had many visitors admiring our home and saying how well constructed it is, then we explain to them about the Aladdin Home and everyone agrees it is much better than any house you can buy ready made. There is another house being constructed a block down from us and is costing \$20,000 and everyone says it can't compare with our El Paso.

It will really be beautiful when it's finished. It has such a nice setting, we have a plot 100x150, just right for such a home, right in among tall pine trees.

Very truly,
Mrs. R. M.

Dear Sirs:

Well, I'm just putting the finishing touches to the house and moving in so I have been very busy. I built this house by myself—my first attempt at anything like this and I do think I did all right by using your plans and blueprints. They were easily followed. It hasn't taken too long considering I did the building in my spare time. All I paid to have done was the plastering. The lumber was far superior to the lumber around here and the flooring was extra nice. Thank you for being as considerate as you have always been with us.

Sincerely yours,
E. R., Jr.



THE PALM SPRINGS — A Typical Western Ranch House

Present-day home builders have shown a tremendous interest in Western Ranch House Architecture. It is a type that is suitable for all climates and is featured by a low roof, wide eaves and covered porch. The breezeway connecting the house proper and garage is an excellent protection to reach the garage in inclement weather. The two plans illustrated are almost identical in exterior appearance. Our plans contemplate concrete floor for both garage and breezeway. We furnish no masonry. Each plan is priced without breezeway and garage. Write for price on breezeway and either one or two-car garage. Send for detail specifications. We pay the freight.



PLAN No. 1



PLAN No. 2

SHOWN
HERE ARE
TWO FINE
PLANS. EACH
CAN BE HAD
WITH
GARAGE AND
BREEZEWAY



THE ROSEWOOD—Captivatingly Original—

Price Given
On Enclosed
Price List

WE PAY THE
FREIGHT



PLAN No. 1



PLAN No. 2

Skilful treatment is portrayed in the well proportioned gables fronting the Rosewood. Perpendicular siding at the front offers pleasing contrast to the usual clapboard siding, and permits a contrasting color of your choice.

Picture windows are shown in both living room and dining room of each of the three floor plans. In Plans No. 1 and No. 2 you will note that the overall size of the house is the same, but the dining room is omitted from Plan 2 and becomes a third bedroom. All three arrangements merit your careful study to choose the one which best suits your needs.

The stairway to second floor in plans 1 and 3 makes possible the addition of extra bedrooms at some future time—"a house that grows." Our price does not include any materials for the second floor. Rail and awning not furnished. Send for detail specifications.



PLAN No. 3

WE SHIP COMPLETE HOUSE IN
SEALED BOX CAR



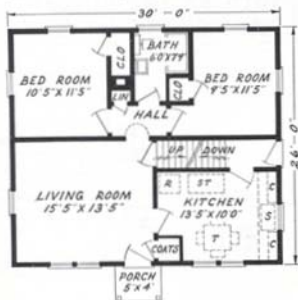
THE NORFOLK — Two Interesting Plans —

Price Given
On Enclosed
Price List

WE PAY THE
FREIGHT

Highly popular in its appeal to present day home builders is the type represented by the Norfolk. And there is good reason behind this popularity. Its simplicity of design, the absence of unnecessary embellishment or furbelows, insure that no money is wasted. Every dollar expended for material and labor achieves the maximum of home comfort, convenience and utility. Two plans are shown below to meet your particular choice. In Plan No. 1

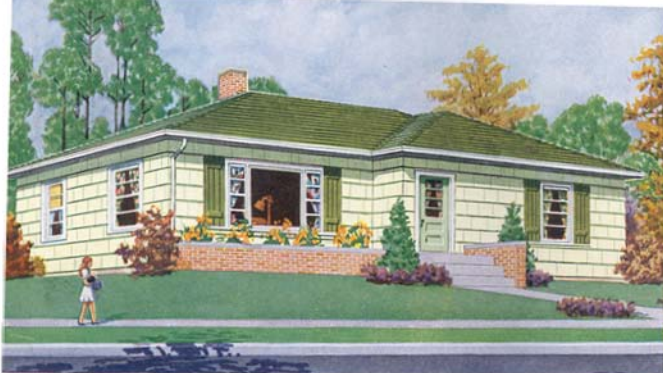
access to the second floor is provided by an enclosed stairway. It is of course possible to finish off this space for use as either storage or added sleeping quarters. Plan No. 3 includes a utility room when basement is not desired. Folding stairway can be installed in ceiling of hall to reach second floor. See Page 48. Complete detail specifications mailed on request.



PLAN No. 1



PLAN No. 3



THE ALAMO — Radiantly Modern —

Price Given
On Enclosed
Price List

WE PAY THE
FREIGHT

Over forty-five years' experience in keeping abreast of the desires and needs of American home builders are summed up in the Alamo which will be one of the leaders in our new designs. The exterior lines are splendidly proportioned and in harmony with the hip roof and moderately styled

side lights which harmonize with the horizontal window lights in all other windows. The outside walls are finished with the newest development—long-lived red cedar shingles, grooved and etched to resemble the antique "hand-rived shakes" which are already distinguished when you receive them. They, therefore, do not require the expense of painting. These shingles come in four shades.

Three interesting floor plans are shown for the Alamo. Whichever one you choose will result in the identical appearance shown in our attractive picture above. The brick work in front is not part of the foundation and may be omitted without detriment to the appearance of this charming Aladdin home. Write for specifications and further information.



PLAN No. 1



PLAN No. 2

**SOLD BY THE GOLDEN
RULE FOR FORTY-FIVE YEARS**

READ
PAGES
2 35
3 38
34 42
43



PLAN No. 3



THE ROCKPORT—Authentically Cape Cod—

Price Given
On Enclosed
Price List

WE PAY THE
FREIGHT

A touch of originality is given this wholesome design by the creation of a bay window, whose projecting cottage type windows harmonize splendidly with the architectural plan. Note the good looking Colonial doorway. Write for further information.



PLAN No. 2

READ
PAGE

19



PLAN No. 4

The Rockport is shown in three plans, each with special features to recommend it. Large living rooms are a desirable part of all plans, each has attractive dining rooms with bedrooms and baths efficiently designed. Trimmed shutters add balance to the windows and contrast to the color scheme. Another noteworthy feature is found in the pilasters at each corner of the house.

SOLD BY THE GOLDEN RULE—SATISFACTION OR YOUR MONEY BACK



PLAN No. 5

A study of Aladdin specifications will reward you with the knowledge that nowhere can be found quality to exceed that which is a part of Aladdin houses. Finer materials cannot be had for we have used the greatest care to seek out and use the very best. Write for detail specifications.

BREEZE WAY and GARAGE

The Plan 5 at the left portrays the ever popular breeze way and garage. This breeze way and single car garage are included in the price quoted for Plan 5. We can quote on a two-car garage instead of a one-car if desired.



THE ATLANTA—Symmetrically Proportioned—

Price Given
On Enclosed
Price List

WE PAY
THE FREIGHT

This pretty design offers a chance to start home ownership on the smallest of savings. Later successes may come, enabling a larger and more expensive home. But either of these designs is the starting point, conserving expenses, inspiring thrift, and saving rent.

The extreme simplicity makes possible applying the owner's labor in very large part, or in fact doing practically all the work of erection. Big savings on cost are thus possible! Literally thousands of our customers, over the years, have had splendid success in erecting and completing their homes. Our instructions, illustrations and drawings are plain and easily understood, with each piece of material marked and numbered to show its place during erection. Every day's labor the owner or friends can put in saves from \$12.00 to \$15.00. And that is what really cuts costs. While this, our newest small plan home was especially designed for a narrow lot, the house having a frontage of 22 or 24 feet, it can, of course, face the street the long way. In that event, we can place the picture window next to the entrance door if desired. The Atlanta expresses grace and symmetry in every line. It is classified as Modern American. Should a basement not be planned, the cellar stairway can be omitted and that space would be utilized to enlarge the bedroom. The floor plans offer maximum efficiency of room arrangement. Write for specifications.

WHEN YOU BUY AN ALADDIN HOME

You Get Dependable Materials,
Superior Workmanship and
Proven Economy.



Save

Time

Save

Money



UNTO THE THIRD GENERATION GRANDFATHER SON and GRANDSON

EACH STARTS HIS MARRIED LIFE IN HIS OWN NEW ALADDIN HOME

Aladdin home owners who built and have lived in their Aladdins for over thirty years here testify unsolicited to their satisfaction and happiness. AND their sons and their sons' sons therefore come to Aladdin for satisfaction, safety and economy.

Dear Sirs:

About 20 years ago my grandparents built a home purchased from your company. I am happy to tell you it is still in perfect condition and a good looking home. As we are interested in building, would like the catalog described in the enclosed advertisement. Sincerely, Mrs. W. P.

Gentlemen:

Enclosed find 25c for your catalog. My father built an Aladdin home 30 years ago and it has proved most satisfactory thru the years. Sincerely, R. C. N.

Dear Sirs:

Enclosed find 25c for catalog. Am very interested in your houses. My father built one 28 years ago and is well satisfied. Thank you. R. M. C.

Gentlemen:

Will you kindly send your latest catalog to the above address. My dad bought one of your homes about 20 years ago and it is just as good today as it was then. Knowing his home as I do is why I want to have or build my own home and the name Aladdin has always been in my mind for that reason.

Sincerely yours, D.C.G.

Manitowoc, Wis.

Dear Sirs:

I noticed your advertisement in a Milwaukee paper and realized that my parents had bought and built one of your readi-cut homes in about 1924—shortly before I was born. Now that I am married we are hoping to build a home of our own soon and I wondered whether you have any catalog or pamphlet you could send us. Thank you for your service.

Gentlemen:

Please send me your catalog of Read-Cut houses with prices. We are interested in your homes due to the fact that you sold my parents a home as far back as 1918.

Yours truly, R. E. A.

Dear Sirs:

Kindly send catalog of Aladdin homes. My parents purchased an Aladdin house from your company in 1913. Complete satisfaction in the home has made possible many pleasant recollections. Sincerely yours, F.C.M.

Gentlemen:

Over thirty years ago my husband's father bought and erected an Aladdin home in this city. It has withstood the rigors of Montana winters for these many years. Please send us your catalog. Yours truly, Mrs. J.W.L.

Dear Sirs:

Please send me catalog of Aladdin homes. My father bought a house in 1910 or 1912. I raised my family of 7 children in it. Mrs. E. T.

Gentlemen:

I would appreciate your forwarding me your booklet on "Read-Cut Homes." It may interest you to know that my father erected one of your Aladdin homes in 1915. Incidentally, it still stands and the only maintenance was a new roof five years ago. Sincerely yours, J. R. M.

Gentlemen:

Having seen your advertisement in the Cleveland Plain Dealer, I am pleased to inform you that my interest is aroused greatly in your catalog. My father purchased one of your homes in 1920 and is still living in it. Daily he receives favorable comment on his residence. Sincerely, C. M. C.

Gentlemen:

Would like to see your latest catalog. It is interesting to recall to you that 28 or more years ago we purchased your Colonial two-story home and it is still one of the most attractive residences in our old home town.

Very truly yours, S. C. R.

Dear Sirs: Akron, Ohio

Please send your new catalog. We are still living in the Aladdin house that we built with our own hands in 1917.

Yours truly, Mrs. H.R.L.

Dillsburg, Pa.

Dear Friends:

Please send your catalog in four colors. My father bought a house from you about 35 or 40 years ago.

Yours truly, Mrs. R.A.B.

He is dead almost 26 years now but my mother lives in their home. My son has the book you gave dad as a gift. Mother gave it to him after father died. It is lovely to look at.

Gentlemen:

My grandfather built an Aladdin house in 1928 and it is still perfect. Said to be the best built house in town. Now my husband would like to look over your latest catalog.

Yours truly, E. H.

Gentlemen:

My father-in-law built one of your Aladdin houses in 1906 and it still stands to this day and in excellent condition. Maybe as you say we can "beat the building game" at its own terms.

Yours very truly, W. J. H.

Gentlemen:

Enclosed is 25 cents for your catalog of homes. Our folks have had one of your homes for about twenty-five years. It is certainly wonderful and so well designed.

Yours truly, Mrs. P.M.

COMPLETE NAME AND ADDRESS FURNISHED ON REQUEST

QUALITY ENDURES THROUGH THE YEARS



THE PILGRIM—Has Achieved Immense Popularity

Price Given
On Enclosed
Price List

WE PAY THE
FREIGHT

Skillful planning of Colonial and modern details is immediately evident in the picture of the Pilgrim shown above. In Plan 4 and also in Plan 5, we can arrange a stair to the attic leading out of the living room and running up over the stair to the basement. This item is not included in our list prices but we will be glad to quote on this change which will include windows for the second floor. Write for detail specifications.



ATTIC

Turn to page 48 and note the beautiful arrangements that can convert an attic into a usable second floor.



PILGRIM with BREEZEWAY and GARAGE

The photo above pictures the Pilgrim with the ever popular breezeway connecting the house proper with the garage. The breezeway can be used as a shady porch, outdoor dining place and a covered space for garden furniture and children's playthings. It affords excellent protection to reach the garage in inclement weather. We can quote on furnishing the above described breezeway with garage (for one car or two cars) for the Pilgrim home or most any Aladdin home shown in our catalog. Side kitchen window furnished all plans.



THE EL PASO—Expresses the New Look

Price Given
On Enclosed
Price List

WE PAY THE
FREIGHT

The El Paso expresses the "New Look" in the currently changing type of American home design. Expanded frontage, moderately following the Ranch house plan, it also achieves distinct individuality. Observations of recently built fine homes will disclose the present popularity of hip roofs as illustrated above. Resale value in the home is an important factor and this is insured by good appearance, good plan and highest quality.

The exterior walls are shown with our long-lived red cedar shingles, grooved and etched to resemble the antique "hand-rived shakes." They are laid at wide exposure for greatest beauty. This new method of laying shingles, double thickness, gives maximum insulation. You may have your choice of several soft, pleasing colors. Wide siding will be furnished if preferred. We can furnish plans 1 and 2 shown here without the garage section at a lower cost to you. Ask for prices.



SAVE
WASTE
•
SAVE
TIME
•
SAVE
MONEY





THE CORONADO—A Superb Creation

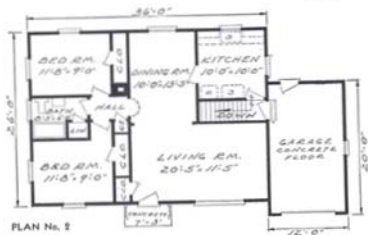
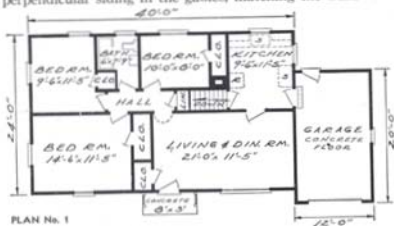
Price Given
On Enclosed
Price List

WE PAY THE
FREIGHT

Lovely to look at. Lovely to live in—that's the "new look" expressed in this charming home. A study of the above photograph is really necessary to fully appreciate its originality in form and entrancing detail. Of especial interest is the contrasting treatment of the outside walls. The perpendicular siding in the gables, matching the walls below the window line, with either wide

siding or large Cedar Shingles, whose lines run horizontally, bespeaks rhythmic contrast. Note the hooded entrance and beautifully designed picture window, which completes a scene of fascinating beauty. Plan No. 3 is priced without the garage while Plans No. 1 and No. 2 are priced with the garage. All plans are designed to give efficient and convenient floor space. Write us for specifications and further information.

**QUALITY ENDURES
THRU THE YEARS—
READ PAGE 19**





THE MAGNOLIA—With Terrace and Gallery —

Price Given
On Enclosed
Price List

WE PAY THE
FREIGHT

Here is a two-story home plan that has just about everything the modern home maker aspires to. In plan it is distinctly original, particularly its fascinating upper gallery which offers protection from the elements to the front terrace. The second story front gable is designed with perpendicular beveled edge siding, a sure touch of contrast, which can be further emphasized by using a pastel color (if desired) for this part of the exterior.

Take especial note of large picture window in the living room, which extends from the base board to the ceiling, the very latest feature in homes of 1951. The entrance hall gives access to the living room, dining room, stairway and cloak closet. The kitchen is sufficiently spacious for a dinette set. "Powder room," or lavatory is a part of first floor convenience. Note the large master bedroom with two additional bedrooms, bath and four closets on the second floor. This admirable design is sure to be a permanently happy selection wherever it may be built. Write for further details.

You Can Build It Yourself



FIRST FLOOR PLAN

ALADDIN'S

Matchless Guarantee

What Induces Us to Supply Such Matchless Quality? Aladdin believes the modest home merits the same goodness as the mansion. We have nailed Aladdin quality on the highest attainable pinnacle and have kept it there. While these are excellent reasons for the careful, thinking home buyer, the real undebatable reason is summed up in the goodness, soundness and the thoroughness of the quality of Aladdin Houses. Aladdin's Guarantee: Satisfaction or your money back.



SECOND FLOOR PLAN

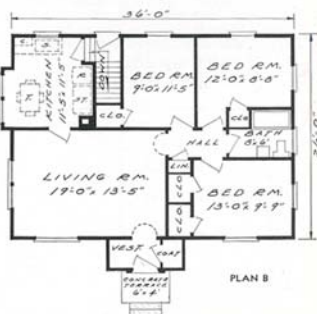
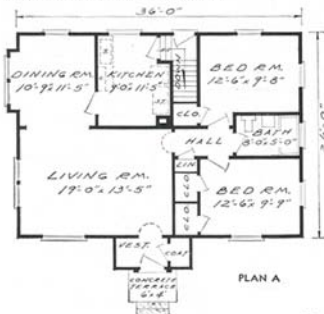


THE BRISTOL—Brilliantly Modern American—

Price Given
On Enclosed
Price List

WE PAY THE
FREIGHT

The Bristol is embellished with two typically Colonial features, the front entrance and the bay window in the dining room. Fluted pilasters bordering each side of the front door, are topped by a head casing designed with dentils. This beautifully proportioned ensemble is of true Colonial inspiration, and affords a genuine welcome to those who enter its portals. The Bristol has proven very popular and has received loud praises of its beauty, convenience and economy from those who have built it. Its interior arrangement includes very desirable features of the ultra modern American home. The Plan B arrangement provides 3 bedrooms of a commodious size that will take care of the needs of the average family. The 2 bedroom arrangement, which is the Bristol, Plan A, provides dining room accommodations. Both plans surely deserve a careful study to be fully appreciated. We will be glad to discuss with you further details of your individual wishes. Write us for detail specifications.

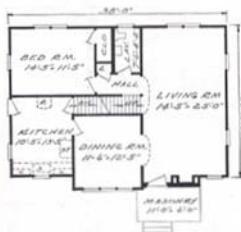




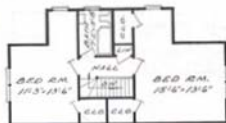
THE SHELBURNE—Fascinating in Detail—

Price Given
On Enclosed
Price List

WE PAY THE
FREIGHT

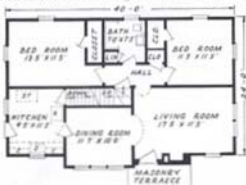


SHELBURNE No. 1—FIRST FLOOR PLAN



SHELBURNE No. 1—SECOND FLOOR PLAN

The Shelburne was first erected in Bay City and opened to the public by Aladdin as a Model Home. Public approval was instant and unanimous and confirmed the good judgment of our designers. It is modeled along ultra modern lines, strong colors and contrast in the chimney, enlivening the picture from the approach. An intriguing front door, with circle top and embellished with large antique hammered hinges adding distinction to the entrance. The No. 1 Plan is priced with two large bedrooms and bath on second floor making this a three-bedroom home. In Plan No. 2 you will note that an enclosed stair leads to second floor from hall. We have priced the Plan No. 2 including enclosed stairway to second floor and a sub-floor making a large attic storeroom. We will be glad to quote a price on the upstairs furnished as shown in the second floor plan, or the upstairs can be finished off at any time in the future when it is convenient for you to do so. This gives you a chance to convert a two-bedroom home into a four-bedroom home when conditions require additional rooms. Write for specifications in detail.



SHELBURNE No. 2—FIRST FLOOR PLAN



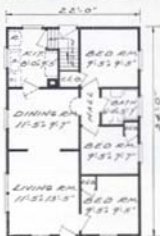
SHELBURNE No. 2—SECOND FLOOR PLAN



THE BIRCHWOOD—

Price Given
On Enclosed
Price List

The Birchwood is a home of solid attractiveness. It will measure up to your highest expectations, from the strength of its sturdy timbers to the charm and beauty of its woodwork and finish. Shrewd buyers immediately recognize the opportunity to avoid paying the top prices charged by regular dealers—an opportunity made possible by dealing direct with the Aladdin Mills. The Birchwood is presented in two different sizes. The exterior is identical in each case, except as to location of windows. The Birchwood, with porch included in prices given, is of standard conventional type that has been so popular for many years. The wood columns can be furnished to rest on porch floor thus eliminating the ornamental brick piers. Be sure to tell us how you would like porch columns furnished with your Birchwood. Write for detail specifications.



PLAN No. 7



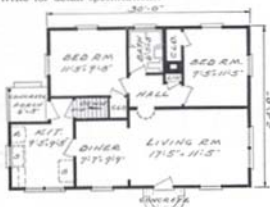
PLAN 4

BUILD IT YOURSELF



THE GABLES

Unusual features distinguish this original design. A charming hood graces the front entrance. It is supported by well proportioned brackets and offers ample protection to the terraced steps. Roof lines, both gable and hip, are distinctive. The rear service porch is an attractive feature. Write for detail specifications.



PLAN A

The built-in goodness, genuine quality of all materials and the beauty of this home will be a great satisfaction to every owner. Remember Aladdin's guarantee of satisfaction or your money back is your protection in building the Aladdin way. "Sold by the Golden Rule" has been tested by thousands of home builders to their lifetime gratification.



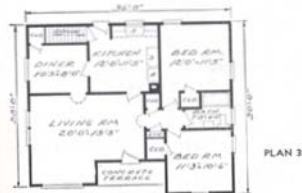
THE PALO ALTO—Picturesquely Western—

Price Given
On Enclosed
Price List

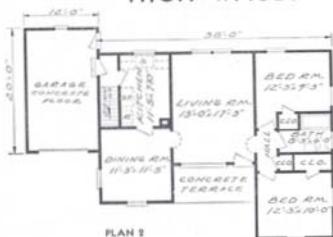
WE PAY THE
FREIGHT

The Palo Alto is presented as a true-to-type Ranch house as the result of comprehensive study by our designers. The appeal of this new pattern of American architecture is constantly growing stronger. The Palo Alto is authentically styled in exterior as well as in interior plan. Notable details are the terraced entrance protected by over hang of the main roof, inviting entrance door and floor to ceiling picture window. All plans incorporate spacious living rooms, which divides the bedrooms and bath from the dining room and kitchen. In Plan No. 1 the floor to ceiling picture window is shown in the rear of the living room, while in Plan No. 2 and Plan No. 3 it is located in front wall, as shown in the above photograph. Plan No. 3 is priced without the garage, while Plan No. 1 and No. 2 are priced with single car garage as shown in illustration above.

The exterior walls will be furnished with siding, shingles or asbestos cement shingles. Our Winston design illustrates asbestos shingles and our Parkway, the double cedar shingles. Our listed price covers your choice without extra charge. Specifications will be furnished for the Palo Alto upon request. Write us.



PAY YOURSELF THOSE HIGH WAGES





THE GREENBRIER—Modified Ranch House

This house has been described as a "modified ranch house" type. Typical of the characteristics which inspired it, the structure is planned to set close to the ground. When the planting of shrubs is completed its lines are softened and the ensemble is most harmonious. Note the broad gable with louvre which modifies the long expanse of roof. Bay windows on front and side add interesting touches, both outside and inside. Your choice of two interior arrangements will be found in the plans shown. Both are of the same size but plan No. 2 offers opportunity for a "house that grows." Stairway to the second floor makes possible the inclusion of two added bedrooms. Materials for completing the second floor will be quoted upon request. Resale value of a house is a most important consideration when selecting your plan. The Greenbrier will measure up highly to this factor, for it is a standard of good modern design with no distinctive embellishment that might be objectionable to prospective buyers. It would have a ready sale.



GREENBRIER PLAN No. 1

SAVE
WASTE

•
SAVE
TIME

•
SAVE
MONEY



GREENBRIER PLAN No. 2

The ALADDIN Organization's Long Experience
Means the Perfection of Machine Production



THE BREWSTER—Beautiful in Its Simplicity—

Price Given
On Enclosed
Price List

WE PAY THE
FREIGHT

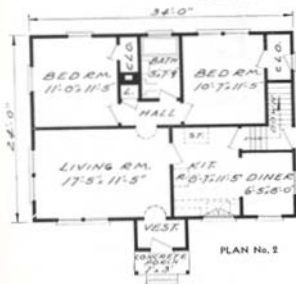
Supremely good taste was employed by our designers when they formulated the Brewster. It is a choice architectural gem, clean in line, employing a form of simple beauty and exquisite simplicity. It is truly a work of art yet most practical in execution for its very simplicity is reason for its astonishingly low cost.

Waste of material is eliminated, every foot of lumber giving 100% value in space, convenience and comfort. The columned and hooded entrance incorporates a commodious vestibule. The interior has every facility needed in a modern home. The excellent living room will more than answer the average family's requirements as to size and wall space.

If you prefer shingles as shown on page 32 for the exterior instead of clapboard siding, we can meet your wishes altho this Colonial type home is very well adapted to siding for the exterior.

A very convenient hood is furnished at the side over the outside door. Complete detail specifications will be sent on request listing all materials we provide for this home.

The Construction Used in an ALADDIN HOME is the Same as That Used in the Best Architect-Designed, Contractor-Built House Erected Anywhere





THE SUMMERSET—Typically Cape Cod—

Price Given
On Enclosed
Price List

WE PAY
THE FREIGHT

Beauty and balance distinguish this perfect example of Cape Cod architecture. Thrifty New Englanders evolved a type of home in revolutionary times that matched their well known characteristics of simplicity, directness, economy and common sense. That it is sound architecture is evidenced by its return to popularity on the designing boards of the present day's leading architects. A living room $18'5" \times 13'5"$. It's of a size found in few houses twice as large as the Summer-set. A dining room, kitchen and grade cellar entrance complete the perfect accommodation on the first floor. Master bedroom matches the living room in spaciousness, and thoroughly adequate closet space is provided. Every dollar invested in this home gives magnificent values. Quality is built into every part—Aladdin Certified lumber and Aladdin Knotless finish. Complete detail specifications on request.



BUILD IT YOURSELF





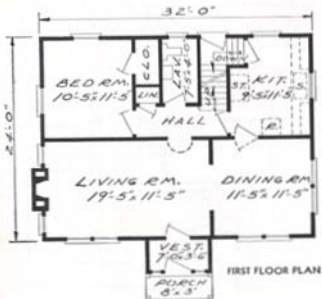
THE CONCORD — Sculptured with Sincerity —

Price Given
On Enclosed
Price List

WE PAY THE
FREIGHT

Distinction is given this charming design by an entrance at once original and appealing. Pillars grace the gabled vestibule while an arched ceiling adds a new touch to the design. Narrow side lights on each side of the front door afford light to the vestibule. The main structure of the Concord is beautifully proportioned. Besides a splendidly spacious living room, the first floor contains a suite including bedroom, lavatory, linen closet and clothes closet. These are entered from the separate hall from which the stairway also leads to the second floor. Grade cellar entrance occupies the space under the main stairway. All four downstairs rooms have double exposure for light and air. The fireplace may be built in as shown, or omitted if desired. On the second floor are found two well planned bedrooms, bathroom and four closets. Complete detail specifications mailed on request, without cost.

The Construction Used in an ALADDIN HOME Is the Same as That Used in the Best Architect-Designed, Contractor-Built House Erected Anywhere





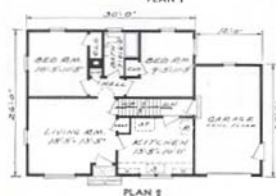
THE PARKWAY—New and Modern—

Price Given
On Enclosed
Price List

WE PAY THE
FREIGHT

This actual color photograph of the Parkway pictures one of our newest modernized Colonial designs—truly a "Home of Tomorrow." Here for the first time, too, we are showing the newest thing in insulated heavy outside cedar shingle walls. Note that deep shadows thrown by the thick base of the shingles soften the severity of plain

white walls. Under each shingle is an undercourse of unstained cedar giving added insulation value. All shingles are dip stained when received by you which further saves the cost of painting your new home. Write for detail specifications.



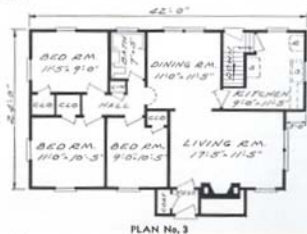
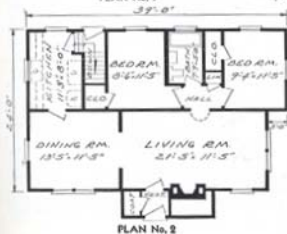


THE MADISON—A True American Home—

Price Given
On Enclosed
Price List

WE PAY
THE
FREIGHT

You will find this charming Madison home dotting the landscape in literally hundreds of communities. This design is typically American and its popularity is assured. The roof lines are especially interesting while the sturdy chimney breathes hospitality. On the exterior we illustrate rugged, artistic shingles of long-lived red cedar grooved and etched to resemble the antique hand-riven shakes of our forefathers. You have a choice of soft, pleasing colors. These shingles are laid at wide exposure for greatest beauty and economy and provide deep, filtering shadow lines resulting from the application of these shakes directly over an under-course of unstained shingles. They lend an element of distinction to this type of architecture. A double thickness and wide exposure gives maximum insulation—keeps your home warm in winter and cool in summer. This attractive shingle exterior is also shown for our Parkway on page 32 and can be furnished in place of wood siding for any homes shown in our catalog. Write us for detail specifications.





BRENTWOOD—Shown with Siding Exterior

THE BRENTWOOD

In order to give you an idea of the attractiveness of the Brentwood in siding, we show a photograph of it with this particular exterior treatment. The Brentwood is regularly priced for a brick veneer exterior but we will gladly quote on furnishing siding, giving you an exterior as illustrated at the left. Write us for prices on the siding.

Berlin, N. J.

Gentlemen:

Many thanks for the very useful gift received from your firm. This is an addition to the already splendid Bristol A. I take this opportunity to again thank you for your fair business dealing and service superb and, dollar for dollar value, this house cannot be equalled locally. It will interest you to know that your house withstood the recent Jersey hurricane without losing a single shingle while the house next door had over forty shingles torn off.

Very sincerely, E. B. T.

PICTURE WINDOWS

We can substitute a picture window for a single or double window in any of our plans at an extra cost. Write us for prices. Our picture window designs are shown on page 47 of this catalog and come in three styles. Styles 1 and 2 are furnished in either 64" width or 84" width. Style 8 is furnished in the 84" width only.

NOTE—Name and address of any letters furnished on request. **WRITE US.**

RANCH HOUSES The inspiration for the ranch house type of home originated in the West and its present great popularity is based on sound reasons. It is a one-story type home which features plenty of light and air. Its longest dimension usually faces the street or road and its approach is inviting and friendly. If you require a one-car garage, we will be glad to quote with breezeway connecting, or if you desire a two-car garage, we can quote the arrangement as shown on page 13.

WELL PLANNED INTERIORS

Sopris, Colo.

Dear Sirs:

We moved into our new home September 1st. We love it. Many people have come in to see it and marveled at the fine construction, fine planning and its compactness. Considered to be the best house in town.

Respectfully, S. B.

Mt. Savage, Md.

Dear Sovereign Brothers:

We want you to know we're warm and snug in our Aladdin "Norfolk" home. Our friends are surprised how large this home is on the inside and at the lovely woodwork and floors. Everything will last us a lifetime, and it should to our successors, too. We sing praises for your company.

Sincerely, C. J. N.

Dears Sirs,

Jacksonville, Ill.

We just can't praise the Aladdin Read-cut Homes enough. We found all blueprints and instructions simple to follow, every piece fitting as you stated. No shortage of material. I will always recommend Aladdin to anyone wishing to build a home.

Very truly yours, Miss R. T.



ALAMO No. 1 KITCHEN

ALADDIN HOUSES

Sold By The GOLDEN RULE

For FORTY-FIVE YEARS

My Dear Sirs:

This is to remind you of how we appreciate our Aladdin Norfolk #1, built in 6 weeks during last July and August. My boy, wife and two daughters are happy as can be in their new home. The lumber was so much better than we could get here at any price. We had so many compliments on the first class material. Yours for better homes as that is the backbone of our nation.

Brookville, O.

L. C. G. and Family

Coropolis, Pa.

Dear Sirs:

We moved into our new Rockport on Thanksgiving Day, and like it very much. I received the lumber for the house on the 5th of June and did most all the work myself, but, plastering, wiring and installing the furnace so I don't think that is too bad considering that I was working in the mill 8 and 10 hours every day. It was a pleasure dealing with your company.

Sincerely, R. W.

PEOPLES NATIONAL BANK OF Bay City BAY CITY, MICHIGAN

EDWARD W. BOWEN
PRESIDENT

January 2, 1931

To Prospective Aladdin Customers:

The Aladdin Company has been a valued customer of this bank and its predecessor, The National Bank of Bay City and Peoples Commercial and Savings Bank, for over forty-five years. The company's sound business principles, integrity and fair dealings have never, to our knowledge, been questioned by the business associates or the very thousands of customers.

It has earned the complete confidence of the public.

Very truly yours,

Edward W. Bowen
Executive Vice President
& Cashier

The above letter will fully explain our business reputation and our ability to fulfill our obligations. We refer you to Dun & Bradstreet's or your own local bank for further reference as to our financial responsibility.

ALADDIN READI-CUT HOUSES ARE NOT PREFABRICATED

Dear Friend:

We have our Aladdin Pilgrim home finished and are now living in it since July and we think it's a dream. Everyone that sees it thinks it's grand. We sure are proud of our beautiful home.

Yours truly, Mr. and Mrs. A. C. S.

Clinton, Iowa

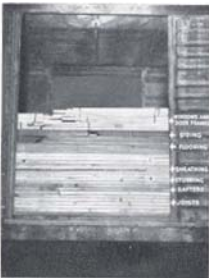
Dear Sirs:

We certainly feel that our Rockport home holds its own against any of the places going up in our town. We are just as happy with it now as we were the day we moved in. Wishing you continued success, we are

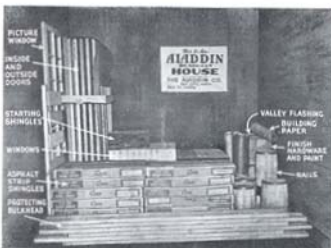
Sincerely, C. F.

Liverpool, N. Y.

ALADDIN GUARANTEES SAFE ARRIVAL OF YOUR MATERIALS WE SHIP YOUR HOME COMPLETE



These pictures show exactly how carefully and systematically your materials are packed for shipment. We guarantee enough materials to complete the home according to the drawings and specifications and also their safe arrival to nearest railroad station.

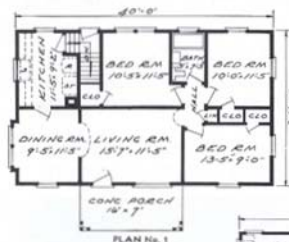




THE NEWPORT—An Original and Arresting Design—

Price Given
On Enclosed
Price List

WE PAY THE
FREIGHT



As new, as fresh and as lovely as tomorrow's colorful sunrise, the Newport is a shining example of all that is good in a modern and modest home. The usual severity of a plain roof is broken by the slight offset at the right, the porch roof with triple columns blends perfectly and protectively into the whole structure, while the picture window is well proportioned and attractive. Note the left elevation where you find perpendicular siding in the gable, offering contrast to the usual siding by separation at the ceiling line with dentils. The projecting mullion window completes a picture of originality and charm. Write us for optional price on ornamental screen door shown on the Newport. Complete detail specifications mailed on request.

BRICK VENEER

Any Aladdin Home shown in the catalog with siding or shingles on the exterior can be built having a brick veneer exterior, which we do not furnish. Write us for the allowance for omission of siding, paint and nails if you wish to veneer the exterior with brick. We do not furnish any of our homes for a solid masonry exterior wall such as solid brick, concrete blocks or stone.





LIVING ROOM

BUILD IT YOURSELF

New Haven, Ind.

Dear Sirs:

I am a well satisfied Aladdin home owner, having bought Rosewood No. 2 in reverse.

This house was started on July 1st, 1949 and completed October 15, 1949 in spare time by my wife, 2 children age 15 and 16 and myself. I paid out approximately \$350 on help. I have a hot water system with the convectors built under each window.

This house has been viewed and admired by many people, also I have been asked many questions about your material and so forth, which I tell them is perfect in every detail and very easily assembled. Send anyone to see it. Tell them to call after 3:30 because we both work.

Yours truly,
A. L. F.

Sharon, Pa.

Dear Sirs:

We wish to let you know how well we like our Aladdin home. On May 15th, 1950 we started to build the El Paso #3. On October 28th, 1950 it was completed and we were ready to move in.

Reading plans was simple and the construction work was all done by ourselves, saving us considerable labor cost. If you wish to refer anyone to us, we will be more than willing to have them stop and see our home as we are very proud of it.

Mr. and Mrs. W. T.

Sheboygan, Wis.

Dear Sirs:

So busy that I haven't had time to write and tell you that the lumber arrived in very good condition.

My husband did most of the work himself and a carpenter couldn't have done better. Our Cedars house is just about completed all but the plastering. We hope to be in it by November. We would have been in sooner but my husband only had a couple of hours a day to work on it. I want to thank you again for everything.

Yours truly,
Mrs. R. G.

ALADDIN READI-CUT HOUSES ARE NOT PREFABRICATED

Dear Sirs:

Doerun, Ga.

Enclosed you will find a picture of my home that we got from you. We have enjoyed our home very, very much. My son-in-law and myself put it up and we moved in it in eight weeks after we got the material. The blueprints were so simple with each piece of lumber marked, we didn't have any trouble building it.

We could not have bought the lumber here for what my house complete cost me. I am proud to recommend your way of home building to any one who wants a good house at lower cost for the material.

Yours truly, S. W. S.

Elmore, Ohio

Dear Sirs:

This coming third of November it will be one year that we lived in this Aladdin "Bristol".

At my age of 80 years, I find real pleasure in constructing the Aladdin. First, you get everything at once. No holdups in building. Second, no whole lot of odds and ends of boards and 2x4's ready for a bonfire. Third, everything readi-cut and it fits. Go nail 'em up. That's real pleasure. Get a good hammer, the nails are on the job too.

Mr. and Mrs. F. J. N.

SAVE FOUR PROFITS

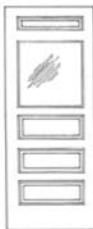
on the

Lumber, Millwork, Hardware,
and Labor. You Buy
Your COMPLETE House
ALL IN ONE SHIPMENT
Direct from Aladdin Mills
Saving Middlemen's Profit

A LOVELY KITCHEN

The fascinating treatment of the dining corner arrangement shown at right is possible in a great many Aladdin floor plans. Bright colors add greatly to the pleasure of home work.

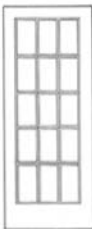




No. 8



No. 9



No. 14



No. 16



No. 10

EXTERIOR DOORS

Style No. 8 door is provided at the rear of each of our Aladdin homes. In our specifications we list the front door, giving the style number of door provided. If you wish a different style door than is specified in the specifications for your home, write us.



INTERIOR DOOR

Shown above is our beautiful four panel door which we provide for all interior openings where doors are shown. If you wish flush doors we can provide them at an extra cost. Write for prices.

MASONRY and FIREPLACES

Chimneys can be located anywhere in the house you like as we do not cut our materials for these openings. If you do not plan to build a fireplace which may be shown in the photograph and plan arrangement, you need not build it. Our foundation plan shows exactly how to proceed with the construction of your foundation. Be sure to get the foundation plan before you build your foundation. We do not furnish or quote on masonry material, plaster base, such as rock lath, or plaster.

ROOM SIZES Shown on catalog floor plans are net dimensions between plastered walls. These dimensions give you the accurate sizes to plan for proper placement of furniture and other equipment.

ALADDIN READI-CUT GARAGES



STANDARD GARAGE

PLANS CAN BE REVERSED

Any Aladdin plan can be furnished to be erected reversed. A reversed plan would place all of the rooms on the opposite side of the home from that shown in the catalog floor plan arrangement.

SPECIAL PLANS The success of the Aladdin Read-cut System depends to a large extent on the reasonable standardization of designs and material sizes. For this reason we find it impractical to quote on special plans of any kind.

GARAGE SPECIFICATIONS

The materials used in our garages are exactly the same high grade as we furnish for our homes. This lumber is entirely cut-to-fit, making the erection a short and easy task. Sills 4"x4", studding 2"x4" on 24" centers, drop siding for side walls, 2"x4" rafters on 24" centers, roof sheathing laid tight, best quality slate surfaced roll roofing. Slate surfaced asphalt strip shingles can be had in place of roofing at prices quoted. See price list. Doors overhead type, 8' wide. Windows furnished as shown in illustration. All hardware, nails and two coats of paint for exterior. All garages furnished without floors as most owners prefer to build floors of cinders or concrete. If you wish a hip roof garage we can furnish that type of roof. Complete prices on enclosed price list.

No. 5—12 ft. wide, 22 ft. deep. No. 6—20 ft. wide, 22 ft. deep.

INDEX OF SUBJECTS DESCRIBED IN THIS ALADDIN CATALOG

Aladdin Read-cut Systems: Pages 2, 3, 38, 42, 43, 47.

Aladdin Terms: See enclosed price list.

Attics: Finishing off second floor, Page 48.

Aladdin Guaranty: See Price List—(Page 23).

Architect: Page 47.

Backyard Designs: Page 17-20.

Cellar Windows: Page 47.

Chimneys: Page 46.

Economy Houses: Pages 29, 40, 41.

Foundations: Page 47.

Foundation Plans: Send \$2.00.

Freight: See order blank on price list.

Garages: Page 38.

Heating, Lighting and Plumbing: Not included, secure locally.

Kitchen Cabinets: Page 43.

Masonry Material, Plaster Base: See Price List and Page 38.

Materials Used: Pages 2, 3, 38, 42, 43.

Picture Windows: Page 47.

Quick Shipment: Page 43.

Reverse Plans: Page 38.

Ranch Houses: Pages 4, 8, 9, 13, 21, 22, 27, 28.

Refusing Labor Costs: Pages 42, 43.

Summer Cottages: Page 47.

Plans with Utility Rooms: Pages 6, 15, 26.

Three Bedroom Houses: Pages 5, 7, 8, 9, 10.

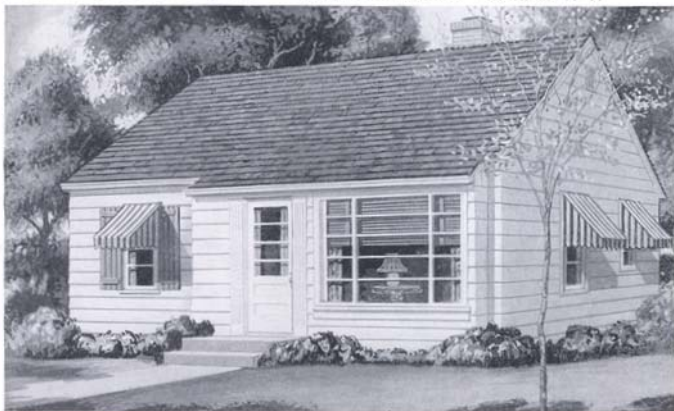
12, 13, 14, 16, 17, 20, 21, 23, 24, 25, 26,

28, 31, 32, 33, 36, 40.

What You Get with your Aladdin House:

Page 2.

Waste Elimination: Page 43.



THE CEDARS—Sparklingly New

Price Given
On Enclosed
Price List

WE PAY THE
FREIGHT

The photo and four floor plans of the new Cedars speak eloquently for themselves. This is our feature small home for 1950. The floor to ceiling picture window dominates this cozy little home and seems to bring the outdoors right into your living room. This feature is a vivid expression of the very latest plans in modern American homes. Should you plan to do considerable work on the erection you will have a sound and lasting investment at a great saving in cost. Write us about your choice of plan and receive complete specifications.



PLAN No. 1



PLAN No. 2



PLAN No. 3

SAVE
WASTE
—
SAVE
TIME
—
SAVE
MONEY
—
READ
PAGE
19

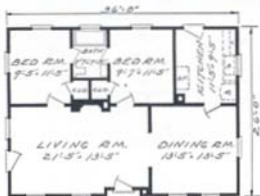


PLAN No. 4

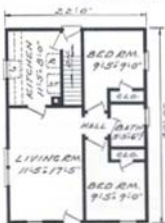


THE POTOMAC—ECONOMY

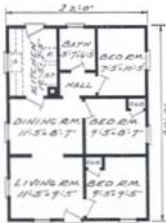
Price Given
On Enclosed
Price List



POTOMAC NO. 1



POTOMAC NO. 2



POTOMAC NO. 3

Refinement of detail and true simplicity distinguish this well-proportioned home. It satisfies every wish in beauty, comfort, convenience, and too, remarkable value. Either Plan Two or Plan Three of the Potomac can be turned to face the street the long way of the house by transposing the front door. The pergola type porch roof harmonizes with the exposed rafter ends. This porch is quoted as an extra in our price list attached. Write for our "Economy" specifications for the Potomac.

BUILD IT YOURSELF

The Colonial atmosphere of the Potomac is very appealing to the home owner for it bespeaks hospitality, old-fashioned simplicity and true goodness. From its clean, straight timbers to its beautifully machined siding and handsomely grained woodwork, it represents the very best in materials. Five large rooms and bath are shown in the Plan One—truly a home to be proud of. The Potomac has been one of our most popular houses for many years and has always given its owners highest satisfaction.

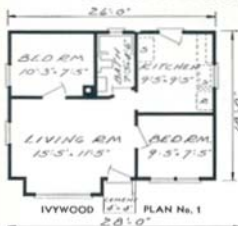
SINGLE CONSTRUCTION includes everything shown in the specifications except sheathing lumber and building paper under the siding on the outside walls and except subfloor lumber and building paper under the finish floors. See price list for prices on "Economy Homes" which are shown on pages 39, 40, and 41.

DOUBLE CONSTRUCTION includes everything shown in the specifications. You will note we provide inch wall sheathing and building paper underneath the bevel siding and inch subfloor sheathing and building paper underneath the finish floor. See price list. Porches are priced separately for "Economy Homes" shown on page 40 only.



THE IVYWOOD—Happily Proportioned and Gay

Here is a home that will gladden the hearts of those who are looking for a modest, compact home. Its exterior features are thoroughly up-to-date, presenting an extended and large picture window with modern front entrance and door. The three floor plans in three sizes offer you a choice to meet your wishes as to cost—and plan. All materials going into the Ivywood are of the same fine quality—the very best—that is furnished for our largest houses. It is priced in both single and double construction.



SAVE
WASTE
•
SAVE TIME
•
SAVE MONEY



Dear Sir:

Our home is nearly completed but for the trim and floors. We're very proud of our Alamo No. 2 Home. We get many compliments. No one believes it's a pre-cut home and they all think it's beautiful. My cousin wants one just like it.

Yours truly, R. K.

Mt. Pleasant, Pa.

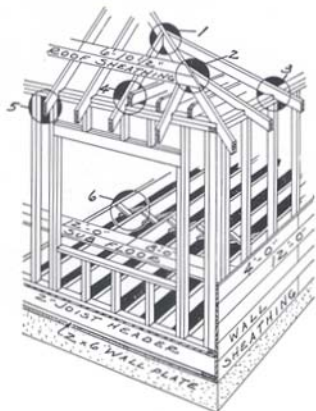
Dear Sirs,

We sure love our little Bristol home and everyone who has seen it likes it very much and is surprised to see the space and arrangement inside. We wish to thank you and your company for all the courtesy and kindness shown us.

Very truly yours, E. R. M.

Swackley, Pa.

SHOWING SAVINGS IN LABOR BY THE READI-CUT SYSTEM



The picture at the left shows how the lumber in your Aladdin house will be cut to fit in our mill and ready to nail in place when you receive it. Figure 1 shows jack rafters with the mitre and bevel at upper end. Figure 2 shows mitre on end of roof sheathing. Figure 3 shows "heel" cut on rafters. Figure 4 shows mitre cut on end of ceiling joists. Figure 5 shows mitre on end of rafters. Figure 6 shows mitre on joists bridging. Wall plates, joists header, floor joists, wall sheathing, wall and partition studding and sub-floor materials are also accurately cut to proper sizes and lengths, each piece also marked for length and location. An Aladdin Read-Cut house is identical in DESIGN, CONSTRUCTION AND MATERIALS to the best architect planned and contractor built home. The Aladdin Company's forty-five years of sound business principles, integrity and fair dealing is your safeguard.

LUMBER MUST BE DRY

No house is well built unless all lumber is dry. Dry lumber is best because: It is pre-shrunk—prevents shrinking later; superior in nail-holding qualities; more resistant to decay; stronger and stiffer. Aladdin gets "The Pick of the TREES."

All Aladdin lumber is thoroughly dry before being shipped to you. We guarantee complete satisfaction or your money back.

ALADDIN HOUSES ARE NOT "PREFABRICATED"

PAY YOURSELF THOSE HIGH WAGES

Every hour you can put in on the construction of your Aladdin home means a saving to you of from \$2.00 to \$3.00 per hour on its cost. That means a SAVING of from \$15.00 to \$18.00 for every day you work on it! **** Depending on the size of the house, the carpenter work sums up to from three hundred hours to twelve hundred hours. WITH MOST OF THE SKILLED LABOR ALREADY PERFORMED, when you receive your Aladdin Read-Cut, what an opportunity you have to bring down the cost of your new home to practically a pre-war level. Our drawings and instructions cover everything from the foundation up, so you can save any part, or even all labor costs.

Bristol Under Construction

Below we show the Bristol under construction. We illustrate the first steps in framing the house, the studding for the outside walls and partitions having been nailed up. This picture shows the exact construction details of every Aladdin house.



Aladdin's 45 Years Service

The Aladdin Company initiated the Modular Principle of house design 45 years ago.

Initiated the Factory Pre-cut System 45 years ago.

Initiated the "Packaged" Sales Plan 45 years ago (one price for the complete house).

Initiated the Merchandising Plan of Direct Sales by the manufacturer to the home builder 45 years ago.

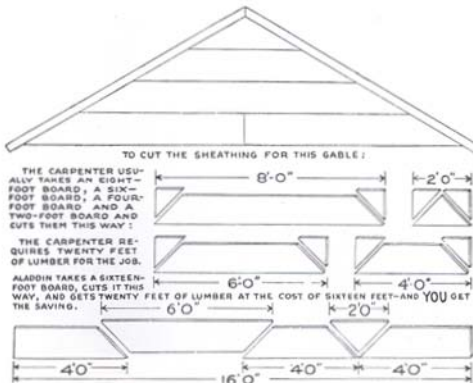
Initiated the Plan of Supplying only the very highest grades of lumber and all other building materials 45 years ago.

Initiated the Practice of Unconditional Guarantees of complete satisfaction to ALL Aladdin Home Builders 45 years ago.

Aladdin has practiced the Golden Rule in Business for 45 Years

HOW THE ALADDIN READI-CUT SYSTEM SAVES YOU MONEY BY GETTING 20 FT. OF LUMBER FROM A 16 FT. BOARD

An Aladdin Read-cut Home saves you from twenty to thirty percent in your labor bill because the carpenter does not have to spend his time working out the construction details, and cut all the lumber by hand. Our complete drawings give him construction details that have been proven the best over a period of forty-five years.



REMEMBER THE LUMBER THAT'S WASTED COSTS JUST AS MUCH AS THE LUMBER THAT'S USED. ALADDIN SAVES 18% LUMBER WASTE.

Efficient Planning Saves Your Money

Aladdin proves to you that the Read-cut System will save you about \$30 out of each \$100 on your lumber costs. The above drawing will give you a very clear understanding of the amazing economies of the Aladdin Read-cut System and what it means to you in dollar saving.

ALADDIN System Gives Control Over Your Costs

you. You KNOW there will be no shortage of materials—nothing forgotten. You KNOW you will not be paying for more materials than will be used and that you will save the price of all "short ends" that are wasted by the old system.

You KNOW you will receive high grade lumber, millwork, hardware—Aladdin CERTIFIED materials. You KNOW everything will be on hand when you want it—all in one shipment and all guaranteed by Aladdin. And you KNOW in advance what your house will look like and what it will be in every way.

KNOWING gives you control—mastery of your money, of materials, of labor and of RESULTS.

Quick Shipment

We can ship any regular home in this catalog within ten days to two weeks after we receive your order. The average time required for delivery after leaving the factory is from three to five days. We prefer to be given a little more time if convenient to you. All homes are shipped complete at one time in a sealed box car from our mill. Before you start your foundation send a deposit of \$2.00 for a plan and instructions for laying out your foundation.

ALADDIN Service

You receive a scientifically designed home; a scientifically manufactured home; the benefit of buying power, thousands of times greater than your own. You receive the safeguards of our experience. You are guarded against costly extras. You have our help in keeping costs down. You save many days time. You save costly waste. You receive everything complete for your home in one shipment. You know exactly what your house will look like when completed. You save all architectural fees. You are assured prompt shipment and quick erection. You receive a bona-fide guarantee of complete satisfaction.

Why shouldn't you save these profits, like thousands of other home-builders have been doing through The Aladdin Company for the past forty-five years?

You KNOW in advance what the materials for your house will cost





ROSEWOOD LIVING ROOM

ALADDIN System Gives Control Over Your Costs

Dear Sirs:

We moved into our Aladdin Home, the Alamo No. 3, on September 9th and to say we are pleased with it, is putting it mildly. We like everything about it, size, floor plan, quality of lumber. We recommend Aladdin Homes to everyone we know who is considering building. Hardly a day passes that we don't receive a compliment on our beautiful little home.

Here is something I think you will appreciate. Last week a lumber dealer here in town told my husband that there is something distinctive in an Aladdin home that you don't see in any other readi-cut or pre-fab house. Both my husband and I wish to thank you for all favors and to say that it has been a pleasure dealing with you.

Very truly yours,
Mrs. O. E. H.

Fort Madison, Iowa

Dear Sirs:

We received all material for our Pilgrim home and windows and screens and storm window for picture window. Everything in good condition. This is a very nice home, inside and out. Pictures don't do justice to it. The material from your company was good. The service was good so again I thank you for everything.

Yours respectfully, T. P.

Bath, N. Y.

QUALITY MATERIALS

North Vernon, Ind.

Dear Sir:

We already have one Aladdin house and we were very pleased. Everyone wants to know where we got such good material. We are living in our Sunshine home and think it is wonderful.

H. J. B.

Devils Lake, N. Dak.

Dear Sirs:

We are now all settled in our new Aladdin house and it is a lovely home. The floors and woodwork are just beautiful since they were varnished. Thanks again for sending such good material. We were more than pleased with everything.

Yours truly,
D. McK.

PLAN NOW—DON'T DELAY

Sturgis, Michigan

Dear Sirs:

Received your letter of the 24th regarding the five Aladdin homes that I built this summer. We were very pleased with these homes, which consist of very good material, and our experience shows that we are saving about 20% labor in the construction over the conventional type houses. I intend to have some photographs made of my Coronado, Pilgrim, Palo Alto and two Cedars and will send you them.

Yours very truly,
M. J. B.

Euclid, O.

Gentlemen:

I like the way you folks do business. (Built the Summerset.)

R. A. M.

Kramer, N. Dak.

Dear Sirs:

I am very well satisfied with my home. Top material at a low cost. (Built the Cedars.)

E. C. N.

Ithaca, N. Y.

Gentlemen:

We are well pleased with the house and with our business transactions with your company. (Built the Atlanta.)

R. P. M.

Chittanooga, N. Y.

Dear Sirs:

We were very pleased with everything about our Aladdin house. (Built the Newport.)

R. T. W.

West Frankfort, N. Y.

Gentlemen:

Our Mt. Vernon is said to be the finest house in this section. The material is the best and plenty of it. We recommend it highly.

R. H.

ALADDIN Has Always Adhered to These Principles

To fulfill every promise; to mix integrity with every article you sell; to be courteous and kind; to be fair always to all men; to build up with hope for better things as your guiding star; to keep faith with others, as well as yourself; to try to do the thing better than it has been done; to hate sham, shoddy and bombast; of such is the kingdom of successful business.

ALADDIN KITCHENS

Here is a thrilling, colorful suggestion for a typical Aladdin kitchen. Light and airy, our kitchens are arranged for step saving efficiency and planned for beauty and living. Home-Makers will find a joy to the heart and feet. The cabinet is beautifully precision made from the best quality hardwood, modern composition wood, fine chrome hardware and fine wear-resistant enamel. Further illustrations will be found on page 34. The cabinet is finished inside and outside in this velvety enamel and is available only in pre-finished white enamel. You will receive the cabinet in strong cartons, ready for installation. We do not include sink, plumbing fixtures, linoleum counter cover or metal mouldings for same. Write for price for the Aladdin Home you are interested in. You will find our price a third less than you can possibly purchase the same quality elsewhere. If Knotty Pine walls are desired for your kitchen, write for price on this material. We can quote it only for kitchen walls.



COLOR GIVES CHARM

Bring your kitchen and bath room to life with the sparkle of bright colors. There is no added cost in choosing and applying your individual favorite colors for walls, floors and curtains. Inspiration can be had by studying illustrations of these rooms as shown in today's magazines.

SAVE FOUR PROFITS

on the

Lumber, Millwork, Hardware, and Labor. You Buy Your COMPLETE House ALL IN ONE SHIPMENT Direct from Aladdin's Mills Saving Middlemen's Profit



ALADDIN BUILDING ESTIMATES

EXCAVATION — Under the heading, "3' Excavation," we give the number of cubic yards of earth necessary to remove in an excavation of that depth. One-third of that amount will be the number of cubic yards in one foot of excavation. If your excavation will be less

than three feet or more than three feet you can multiply the number of cubic yards for one foot of excavation by the depth you intend excavating and the resulting figure will give you the number of cubic yards to remove in your particular case. Our figures are based on making the excavation one foot larger each way than the size of the foundation and does not include garage.

NAME OF HOME	Cu. Yds. Excavation 3' Deep	10' Blocks High	Cu. Yds. Poured Concrete 8" Wall	Sq. Yds. Plastering Surface
Alamo No. 1.....	129	940	25	483
Alamo No. 2.....	129	940	25	472
Alamo No. 3.....	102	820	23	403
Atlanta No. 1.....	98	740	22	401
Atlanta No. 2.....	98	720	22	384
Birchwood No. 4.....	118	910	24	414
Birchwood No. 7.....	96	820	22	399
Brentwood No. 1.....	168	1170	32	518
Brentwood No. 2.....	149	1060	42	485
Brentwood No. 3.....	127	1000	40	425
Brewster No. 2.....	108	910	24	436
Brewster No. 3.....	110	880	24	403
Bristol "A".....	124	970	26	491
Bristol "B".....	124	970	26	501
Brookton No. 3.....	95	820	22	388
Brookton No. 4.....	95	820	22	387
Cedars No. 1.....	20	655	18	230
Cedars No. 2.....	25	715	19	268
Cedars No. 3.....	39	775	24	317
Cedars No. 4.....	106	865	23	352
Concord.....	110	910	24	618
Coronado No. 1.....	121	940	25	473
Coronado No. 2.....	110	910	24	475
Coronado No. 3.....	98	830	22	378
Del Mar No. 1.....	104	885	27	368
Del Mar No. 2.....	129	1015	28	461
Del Mar No. 3.....	174	1215	33	605
Del Mar No. 4.....	174	1215	33	657
El Paso No. 1.....	111	1090	29	520
El Paso No. 2.....	123	970	26	475
El Paso No. 3.....	119	1300	35	672
El Paso No. 4.....	121	970	26	461
Gables "A".....	101	880	23	296
Green Briar No. 1.....	119	940	25	431
Green Briar No. 2.....	119	940	25	466
Ivywood No. 1.....	23	600	19	227
Ivywood No. 2.....	23	795	22	300
Ivywood No. 3.....	107	895	24	425
Lexington No. 1.....	131	975	27	486
Lexington No. 2.....	131	975	27	497
Madison No. 1.....	100	895	24	411
Madison No. 2.....	122	985	26	482
Madison No. 3.....	130	1050	27	510
Magnum.....	91	850	23	660
Mt. Vernon No. 2.....	80	730	20	341
Mt. Vernon No. 3.....	82	790	21	372
Mt. Vernon No. 4.....	23	730	20	313
Newport No. 1.....	122	940	25	430
Newport No. 4.....	81	730	20	340
Newport No. 5.....	72	730	20	359
Norfolk No. 1.....	100	870	22	393
Norfolk No. 2.....	26	850	23	364
Palm Springs No. 1.....	101	1405	30	633
Palm Springs No. 3.....	136	1045	28	457
Palo Alto No. 1.....	90	970	26	390
Palo Alto No. 2.....	118	1090	29	442
Palo Alto No. 3.....	125	1060	29	490
Parkway No. 1.....	118	940	25	429
Parkway No. 2.....	100	850	23	397
Parkway No. 4.....	118	940	25	434
Parkway No. 5.....	133	1090	27	469
Pasadena No. 1.....	100	1060	29	429
Pasadena No. 2.....	113	910	25	409
Pilgrim No. 2.....	133	1015	27	469
Pilgrim No. 4.....	110	940	25	418
Potomac No. 1.....	133	1015	27	516
Potomac No. 2.....	85	925	26	372
Potomac No. 3.....	85	760	20	329
Potomac No. 4.....	23	760	20	341
Redwood No. 1.....	27	825	23	372
Redwood No. 2.....	96	825	23	372
Redwood No. 3.....	110	890	24	411
Rockport No. 2.....	122	960	25	412
Rockport No. 4.....	100	960	25	372
Rockport No. 5.....	122	960	25	412
Rosewood No. 1.....	132	1030	27	470
Rosewood No. 2.....	132	1030	27	513
Rosewood No. 3.....	114	940	25	432
Shelburne No. 1.....	129	920	26	712
Shelburne No. 2.....	126	1045	28	500
Sunmeadow.....	96	815	21	438
Sunshine "B".....	87	820	22	380
Sunshine "D".....	85	760	20	344
Sunshine "E".....	102	850	23	420
Winston No. 1.....	115	940	25	425
Winston No. 5.....	117	940	25	475

FOUNDATIONS — Under the heading, "10' Blocks," we give you the number of concrete blocks of that size necessary for a foundation wall 10 blocks high. As concrete blocks are 8 inches high, a 10 block wall is approximately 7 feet high. If a wall of different height is built divide the quantities by ten and multiply by the number of blocks high your wall is to be built. If a cellar is not being built under your home, a seven foot wall will not be required. It will only be necessary to carry your foundation down below the frost line. This is seldom more than 2 to 3 feet below ground or grade line and in many localities is considerably less. Should you use 24" blocks the quantity of blocks required will be one-third less. If a poured concrete foundation wall is to be used, you will find below the number of cubic yards of poured concrete required for each home. As the mix differs in every locality, your local mason dealer can give you the quantities of cement, sand and gravel required for this type of foundation and also quote you prices on the necessary materials for the number of cubic yards of poured concrete listed. The figures are based on a wall 8" thick, not including footings.

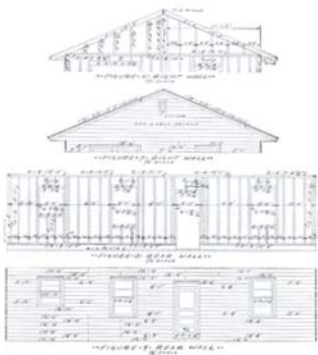
PLASTERING SURFACE — Under this heading we give you the number of square yards of surface in the home to be lathed and plastered, and with all openings included.

CHIMNEYS — Chimneys and fireplaces are sometimes shown on our plans to suggest a practical location. Since we do not cut the openings in our homes for them, you can change the location or omit them entirely if preferred. The amount of material required for chimneys is as follows:

One 8" x 8" flue chimney, 20 bricks to each foot of height.
Two 8" x 8" flue chimneys, 30 bricks to each foot of height.
One 8" x 12" flue chimney, 35 bricks to each foot of height.
Two 8" x 12" flue chimneys, 60 bricks to each foot of height.
For mortar allow $\frac{1}{4}$ bbl. cement and $\frac{1}{2}$ cu. yd. sand for each 1000 bricks.

It's Easy to Follow

ALADDIN Blueprints



Here we have shown in greatly reduced size, a few figures taken from a set of Aladdin Ready-cut House Plans. They show the size, length and position of every piece of material entering into the construction of the home. All materials that need mitering are mitered to the exact length and all you have to do is nail the materials in place.

Optional Materials and Equipment



PICTURE WINDOW STYLE 1



PICTURE WINDOW STYLE 2



PICTURE WINDOW STYLE 8

PICTURE WINDOWS The recent vogue of installing picture windows is both attractive and sensible. Practical, because this type of window enhances the attractiveness of any home and practical, because of the better light in the room in which it is placed. The above picture windows do not open for ventilation and as illustrated, are one complete sash. Style 1 and 2 can be furnished in place of any single or double (mullion) window and are available in two sizes—5'4"x4'6" and 7'0"x4'6". Style 8 is supplied in one size only—7'0"x6'0". Our picture window No. 9 is approximately 7'x6', divided into nine lights, as shown on page 8 and page 9. The picture window No. 10 is approximately 9'6"x6'0", divided twelve lights and is illustrated on page 4 and page 5. These windows are shipped knocked down, ready to assemble for easy handling. Write for prices. These windows are not sold separately from our houses but are included when shown in plan and illustration.

SHINGLES Instead of wood siding for the outside walls we can furnish artistic shingles of long-lived red cedar grooved and etched to resemble the antique shingles as illustrated on page 32 and also on page 33. The shingles are laid at a wide exposure with a double thickness at the butt. You have your choice of either siding or these shingles at no difference in price. Shingles come in Green, Gray, Brown, or White.

ARCHES We include in the price for each home square cased openings or materials to build a curved plastered arch where arch openings are shown in the floor plan. We will furnish either type with your home. If you use dry wall for the interior, such as plaster board or wall board, we will furnish square cased arches as the curved arches can be used only when you plaster the interior. Specify the kind you want.

CELLAR WINDOWS We can furnish a complete cellar window unit already assembled with hardware in place, including glazed sash and the cellar window screen, for either a 2 block high opening or a 3 block high opening. For either cellar window leave the foundation wall opening 32 1/4" wide. It is not necessary that the windows be shipped before the house as they can easily be set in the foundation wall when your materials arrive. Write for prices.

OAK FLOORING "Select" oak flooring can be furnished in any or all rooms of any Aladdin home. If wanted, write us for prices and state in what rooms you will wish to use the oak flooring.

KITCHEN CABINETS Kitchen cabinets can be furnished in accordance with catalog floor plan layouts. These kitchen cabinets are shipped to you direct and are complete—fully enameled (white) outside and inside. Doors are hung, friction catches applied, door and drawers prepared for pulls. These cabinets are finished in mar-resisting, high lustre white enamel. See pages 34 and 45. Write for prices.

SUMMER COTTAGES

We have prepared a special pamphlet illustrating our Aladdin Summer Cottages. This pamphlet will be sent to you on request and without obligation. When writing us please state if you are in possession of our regular catalog.

FOUNDATION PLANS A foundation plan for the home of your selection will be mailed you complete with instructions for laying out the foundation wall upon receipt of a deposit of \$2.00. Be sure to get the foundation plan for your home before starting your foundation wall.

**PRICES QUOTED ON ABOVE ITEMS
ARE FOR SHIPMENT ONLY WITH YOUR HOUSE**

THE ALADDIN COMPANY

Catalog No. 56

FOUNDED 1908

BY—W. J. and O. E. SOVEREIGN

1951

HOME OFFICE and MILLS, BAY CITY, MICHIGAN

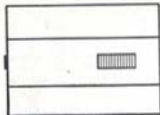
EXPANSION ATTICS— HOMES THAT GROW

The average total first floor space of one story homes in this book approximates 800 square feet. Expansion attics as shown here add one-half again as much. Attics may be finished when building or later. The attic bed unit shown at the right will be furnished in either single or double size. One or both sides of bed can be furnished with full length closet doors instead of shelves or drawers.

PLAN No. 1 →



PLAN No. 2



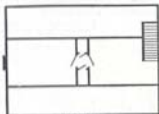
PLAN No. 2

of the hall. The stairway can be lowered or raised with almost finger pressure. When closed, the space is covered with a neat panel. The frame opening in the ceiling is about 26" x 54".

A few of our plans show a permanent stairway to second floor but no materials are included to finish off the second floor, unless the floor plan, and specifications state the second floor materials are included. In most homes valuable attic space is available for future expansion.

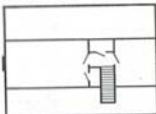
OUR FOLDING STAIRWAY

Where no stairway is shown in the floor plan it is always possible to install a folding stairway, usually in the ceiling



PLAN No. 1

The three suggestions will add another 300 or 400 square feet of living space to your home. You can include in your order (if a permanent stair to the second floor is not included) a folding stairway as pictured on this page. Price will be given on request. When installing this folding stairway you are spared the present cost of finishing off the second-story rooms but are in shape to expand at a later time at minimum cost.



PLAN No. 3 BELOW

