



**Sold By The
GOLDEN
RULE**

ALADDIN

**READI-CUT
HOMES**
(NOT PREFABRICATED)

THE ALADDIN COMPANY OF BAY CITY, MICHIGAN, WAS FOUNDED FORTY-SIX YEARS AGO



THE SANTA BARBARA—See page 41 for Plans and Description

INDEX

House	Page	House	Page	House	Page	House	Page	House	Page
Acacia.....	17	Colony.....	20	Inglewood.....	49	Palo Alto.....	15	Santa Barbara.....	41
Alamo.....	32	Concord.....	27	Jasmine.....	9	Palmhurst.....	21	Santa Fe.....	5
Atlanta.....	14	Cronache.....	10	Lexington.....	24	Parkway.....	18	Shelburne.....	32
Beverly.....	42	Del Mar.....	28	Madison.....	30	Pasadena.....	26	Summerbrook.....	35
Brentwood.....	33	El Paso.....	53	Magnolia.....	43	Pilgrim.....	44	Sunshine.....	19
Brewster.....	23	El Rancho.....	16	Mayfair.....	20	Pomona.....	31	Sylvan.....	20
Bristol.....	40	Clenbrooke.....	12	Newport.....	48	Hollywood.....	29	Vinewood.....	7
Bruckton.....	39	Graystone.....	8	Norfolk.....	35	Rio Grande.....	1	Williamsburg.....	25
Carlton.....	11	Greenbrier.....	22	Palm Springs.....	13	Rockport.....	45	Winston.....	38
						Rosewood.....	6		

**SAVE FOUR
PROFITS**

LUMBER, MILLWORK, HARDWARE AND LABOR

46 Years of ALADDIN Success

Here are twelve Aladdin workers who have been continuously working with the Company for over thirty years. They are ready to work for you and with you in building your home.



W. J. SOVEREIGN—46
President



H. V. WHITE—32
Ass't Gen. Mgr.



A. I. LAMB—38
Sup't of Production



O. E. SOVEREIGN—46
Treas. and Gen. Mgr.



OTTO PIERCE—39



A. PERMODA—36



G. PORTER—31



B. ANDREWS—39



Z. BURGESSON—32



L. BRAUER—31

ALADDIN ORIGINATED THE READI-CUT SYSTEM OF HOME BUILDING

THE ALADDIN COMPANY was founded forty-six years ago by W. J. Sovereign and O. E. Sovereign who perfected and established the First Read-cut System of Home Building in the world.

Today, as in the past, the company is still managed and owned by these two brothers. Customers of forty-six years ago may write to The Aladdin Company today and know that the management is unchanged, and that they are writing to and dealing with old friends.

Their vast experience in the wants and needs of homebuilders, in the choice of the best materials for their use, in the preparation and manufacture of the lumber is of tremendous value to every customer of Aladdin. The Sovereign Brothers are ready to give you their personal time and assistance to guard you from the mistakes so often made by inexperienced homebuilders. This service costs you not one cent extra. It is included as a part of every Aladdin transaction.

The Read-cut System as originated by The Aladdin Company has been approved by the United States Government, the Michigan State Government, and hundreds of big corporations by large purchases of Aladdin Houses. This company manufactured and shipped the first complete read-cut home built in the world.



F. LUTZKE—41



V. LEPEAK—42

WHAT YOU GET WHEN YOU BUY AN ALADDIN READI-CUT HOUSE

A careful reading of the following will give you a clear idea of the completeness of materials and equipment which are included in the price of Aladdin Houses.

You also receive our forty-six years of home building experience to guard you against mistakes of any kind.

It has taught us the best construction methods, the best materials to use, the best way to prepare the building plans so every step of erection can be followed even though you have had no previous experience in building. And to complete our service to you, we guarantee that you will receive sufficient of all materials to complete your home according to the plans and specifications. Read the following carefully—

Foundation wall plates cut to fit
Girders Sills cut to fit.
Floor Joists cut to fit.
Floor Joist Bridging cut to fit.
Sub Floor Sheathing cut to fit.
Wall Sheathing cut to fit.
Partition Studing cut to fit.
Ceiling Joists cut to fit.
Rafters cut to fit.
Roof Sheathing cut to fit.
Water Proof Building paper between sub and finished floor.
Finish Floor Tongued and Grooved.
Water Proof Building paper between wall sheathing and siding.

Siding squared ready to fit against eaves and outside finish.
Cedar shingles or asbestos shingles instead of siding if preferred.
Outside finishing lumber cut ready for fitting.
Roof, eave and quarter round moldings.
Window frames complete with inside and outside trim.
Glass in window sash ready to hang.
Door frames complete with inside and outside trim.
Doors—Interior and Exterior.
Baseboard and base shoe for all rooms.
For two story houses stairways,

treads, risers, stringers, newel posts, balusters, molding, etc.—boxed ready for erection.
Celloid Stairs where shown—all materials cut to fit.
Nails of proper size in proper quantity.
Lock sets, Door Hinges.
Double acting door set where shown.
Metal Door Bumpers.
All window hardware complete.
Slate surfaced asphalt shingles.
Valley findings as needed.
Paint—three coats. Finish coats any colors desired.
Turpentine, Putty and Oil.
Interior stains—one coat—Floor and Interior Woodwork.

Interior Varnish—two coats—Floor and Interior Woodwork.
Porch joint, porch flooring, steps, columns, balusters and porch roof sheathing and ceiling cut to fit.
Closet hook strips.
Closet Shelving.
Window Shutters where shown.
Flower Boxes where shown.
Foundation plans and foundation instructions. (See Page 51).
Complete set detailed blueprints showing every step of erection.
Copyrighted book of printed instructions and illustrations describing every step in erecting and completing the house.

ALADDIN Enters FORTY-SIXTH Year of Manufacturing READI-CUT HOMES



The ALADDIN Organization's Long Experience Means the Perfection of Machine Production, Saving of Labor on the Job and Elimination of Waste of Materials.

ALADDIN SYSTEM IS BUILT ON THIS PRINCIPLE

Modern power-driven machines can do BETTER work at a lower cost than hand labor. Then every bit of work that CAN be done by machine SHOULD be so done. The steel worker with a little hack-saw trying to cut and fit the steel girders of the modern skyscrapers should be no more out of place than the modern carpenter cutting sills, joists, and rafters. The skyscraper framework is cut to fit by machines in the steel mills, marked and numbered ready for erection.

The lumber in the Aladdin houses is cut to fit by machines in the Aladdin mills, marked and numbered ready for erection. The steel system is over sixty years old—the Aladdin system over forty five years old.

An Aladdin Read-cut Home saves you from twenty to thirty percent in your labor bill because the carpenter does not have to spend his time working out the construction details, and cut all the lumber by hand. Our complete drawings

give him construction details that have been proven the best over a period of over forty five years. When building the Aladdin Way, you save all the time used by a carpenter

in measuring, cutting, trying and fitting, because all of this work has been done in our factory by modern machines. A machine cut Aladdin home is better built, stronger and more substantial and it will give you a lifetime of satisfaction.

Standard size materials save waste. We save you eighteen percent in waste because our homes are designed to use standard sizes and lengths. Also all mill work, doors, windows, etc., are manufactured to standard sizes thus making it possible for us to produce them in tremendous quantities. Naturally with the large production and modern factory manufacturing methods, we effect a saving for you on all of the items entering into the construction of your home. All lumber used in Aladdin homes is standard size as adopted by The National Association of Lumber Manufacturers.

Volume the Magic Word

The first rule in the dialogue of manufacturing is: To lower the cost, divide the several parts of the labor employed into simple, specialized, mechanical operations.

But this won't work without the mystic word.

And that word is "VOLUME!"

Your local contractor may build ten houses a year. Could he afford to invest \$50,000 in machinery to lower his cost on the ten houses twenty per cent?

"Volume" of business makes possible the highly specialized machinery found throughout the Aladdin mills; makes practical the investment of \$10,000 in a single machine which will lower the cost \$5.00 on a house!

But that \$5.00 is multiplied twenty to thirty times on each house and it saves every buyer of an Aladdin from \$100 to \$300 on construction cost alone.

Quantity Buying

Because of the tremendous amount of building materials we purchase each year, we are in a position to buy at the lowest possible prices. The large quantity purchased makes it possible for us to obtain prices far lower than any company or individual who has a demand for only a few homes each year.

When the finest grades of materials are used, you are assured of the highest kind of an investment in your home. We never, in any case, sacrifice quality for price or profit. Aladdin Certified Lumber is guaranteed to be satisfactory.



Showing Simple Plan of Laying Out Materials

One of the most amusing remarks made is that the builder of an Aladdin home will lose as much time hunting out his material and finding the right pieces as he will save by the Read-cut System. Any thought about time lost in hunting for pieces will be found untrue when you see the simple system of laying out materials given in our Instruction Book with every home.



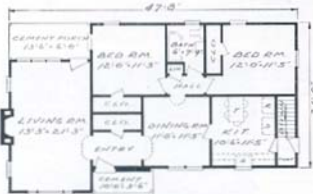
THE RIO GRANDE

Price Given
On Enclosed
Price List

WE PAY THE
FREIGHT



PLAN No. 1



PLAN No. 2

Every modern feature, every modern convenience of today's newest and finest home building plans will be found by a careful study of the Rio Grande. The picture above presents a beautifully proportioned structure, in ground elevations, walls and windows and roof lines. The ever popular sweeping gables do much to enhance its beauty, the front projection offering protection to the entrance. Extra wide picture windows face both the terrace and garden at rear of living room. Original in conception and highly convenient is the double combination bath room in Plan No. 1. Its placement in this plan permits circulating access from living room to dining room and kitchen through front hall, as well as from living room through bedrooms and bath. In our price for the Rio Grande we have included siding where stone is shown in the front wall. If you plan to use stone as illustrated, write us for allowance for siding and paint for that portion of the front wall.

**For further plans on the
Rio Grande See Page 50**

Dear Sirs:

Verona, Pa.

We would like to tell you that we are very happy with our Aladdin Home and we think you gentlemen are the perfect business men. There was never one thing that we needed that you failed to take care of, and our opinion of The Aladdin Company is only the highest of praise is due them.

If we can be of any help we shall only be too glad to help,

Mr. and Mrs. H. H.

Dear Sirs:

Allentown, Pa.

Received my Alamo #2 home right on the day expected. Four and one half days, three men and the house is already under roof. Everything fits like a glove. As a builder, other contractors were wondering why I built a pre-cut home, but since they see the quality of the materials, the saving in labor, the saving in time by having the house in one package, they are admiring the erection and speaking of going into the same type of building.

Yours truly,
E. A. S.



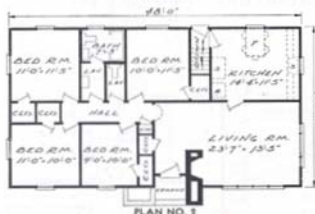
THE SANTA FE—Resplendent in Detail—

Price Given
On Enclosed
Price List

WE PAY THE
FREIGHT



PLAN NO. 1



PLAN NO. 2

Aladdin designers have captured the newest trend in home planning with the presentation of the Santa Fe for 1952. It is fascinating in its simplicity, and because it is a perfectly square structure, it is also most economical in cost. The Santa Fe is shown with the large double course "Shake" Cedar Shingles, described elsewhere in this book. While the large chimney adds charm to this home its construction is optional. Two room arrangements are shown here, one three bedrooms and one with four bedrooms. In both plans a powder room increases the convenience, in addition to the bathroom. The living room is generously provided with light, having two large picture windows. Five closets are arranged in each plan. By sending for our specifications you will receive detail information on every part of this lovely home and further details in reply to any questions that you want answered. Your choice of exterior colors for the Santa Fe will be possible after receiving our diversified color card.

Dear Sirs:

Highland, Maryland

I might add that, should you decide to deal with the Aladdin people I can assure you that you will never regret the deal you may make with them. This is my second experience with the Aladdin Company, and I can assure you, if the first one (over ten years ago) had not been entirely satisfactory, there would not have been a second deal. The Company is thoroughly reliable in every respect, and any statement they may make to you, either in their printed catalog, or by written letter, can be absolutely relied on. The material is of the best, and they send you more than enough for a home. Persons in my neighborhood who inspected the place while it was being constructed remarked upon the excellent quality of the lumber and other materials furnished.

Dear Sirs:

Onondago Hill 7
New York

Our Shelburne in every way has our approval. We are located on top of a hill and it stood a tornado last November when we just moved in and we didn't hear a groan or see any damage. We are completely satisfied both on the quality and excellent service you've afforded us. We definitely would build the same way again.

N. G. H.

H. F. C.



THE ROSEWOOD — Captivatingly Original —

Price Given
On Enclosed
Price List

WE PAY THE
FREIGHT



PLAN No. 1



PLAN No. 2

Skilful treatment is portrayed in the well proportioned gables fronting the Rosewood. Perpendicular siding at the front offers pleasing contrast to the usual clapboard siding, and permits a contrasting color of your choice.

Picture windows are shown in both living room and dining room of each of two floor plans. In Plans No. 1 and No. 2 you will note that the overall size of the house is the same, but the dining room is omitted from Plan 2 and becomes a third bedroom. All three arrangements merit your careful study to choose the one which best suits your needs.

The stairway to second floor in plans 1 and 3 makes possible the addition of extra bedrooms at some future time—"a house that grows." Our price does not include any materials for the second floor. Rail and awning not furnished. Send for detail specifications.



PLAN No. 3

WE SHIP COMPLETE HOUSE IN
SEALED BOX CAR



THE VINEWOOD—A Master Design —

Price Given
On Enclosed
Price List

WE PAY
THE
FREIGHT

Here is the Vinewood plan. Aladdin designers have captured the Colonial charm and simplicity while bringing it up to date with such interesting features as big picture window, projecting and gabled front entrance and contrasting Cedar Shakes for the outside walls of the latter. Each of the two interior plan arrangements have been popular over a period of years, along with a different exterior. Plan No. 1 has two bedrooms with combination dining space and sun room. Plan No. 2 affords three bedrooms to accommodate a larger family. If either of these two plans meets your family needs you will be the happy possessor of a charming home.

**You save when you build the ALADDIN way
because factory cutting and fitting reduces
the labor cost 30% and lumber waste 18%.**

**WE PAY
THE
FREIGHT**



PLAN NO. 1



PLAN NO. 2



THE GRAYSTONE — DESIGNED FOR A NARROW LOT

Price Given
On Enclosed
Price List,

WE PAY THE
FREIGHT



Dear Sirs:

Lorain, Ohio
We have had many lovely compliments on our house. We are truly proud of it. We are ever so grateful to all of you.
B. P. S.

Aladdin designers have created this charming home for those who appreciate the best in modern design. Notice the nice contrast achieved in the perpendicular siding at front of living room. Notice also the modern ornamental metal column which supports the projecting roof and which in turn protects the entrance way. This is modern design applied with common sense—even the mulioned windows in the bedroom are high enough to permit the use of the wall space beneath for furniture. Aladdin has built its reputation on both high quality of materials and good design. Two interesting plans are shown here, both of which are designed to permit building of either on a narrow lot, yet each will be equally attractive when facing the long way on your lot. Write today for detail specifications on this fine home.



Dear Sirs.

Bellville, Texas

All of labor on our house was performed by my brother and myself. We both go to college and we built the house without any previous construction experience.

M. J. L.



THE JASMINE — Home of Comfort —

Price Given
On Enclosed
Price List

WE PAY THE
FREIGHT



BUILD
IT
YOURSELF



Building a home will probably be the largest personal investment of your lifetime. To have at your command an organization experienced in planning, creating and advising you when you build—an organization with a lifetime—over forty-six years—spent in this work—is a priceless advantage to you.

The modest home on this page has had wide acceptance by homebuilders. You will be proud of its exterior beauty. It can be placed with pride and confidence in any surroundings. A careful study of its interior arrangements reveals the last word in comfort, convenience and efficiency. Ample wall space and cross ventilation have been accomplished in every room. Note that it includes four closets. Your choice of two plans is shown above.

SOLD BY THE GOLDEN RULE FOR FORTY-SIX YEARS



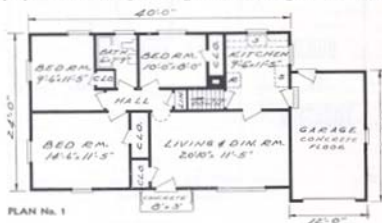
THE CORONADO—A Superb Creation —

Price Given
On Enclosed
Price List

WE PAY THE
FREIGHT

Lovely to look at. Lovely to live in—that's the "new look" expressed in this charming home. A study of the above photograph is really necessary to fully appreciate its originality in form and entrancing detail. Of especial interest is the contrasting treatment of the outside walls. The perpendicular siding in the gables, matching the walls below

the window line, with either wide siding or large Cedar Shingles, whose lines run horizontally, bespeaks rhythmic contrast. Note the hooded entrance and beautifully designed picture window, which completes a scene of fascinating beauty. Plan No. 3 is priced without the garage while Plans No. 1 and No. 2 are priced with the garage. All plans are designed to give efficient and convenient floor space. Write us for specifications and further information.



**QUALITY ENDURES
THRU THE YEARS—
READ PAGE 18**





THE CARLTON — Sparklingly New

Price Given
On Enclosed
Price List

WE PAY THE
FREIGHT



The photo and four floor plans of the new Carlton speak eloquently for themselves. The floor to ceiling picture window dominates this cozy little home and seems to bring the outdoors right into your living room. This feature is a vivid expression of the very latest plans in modern American homes. Should you plan to do considerable work on the erection you will have a sound and lasting investment at a great saving in cost. Write us about your choice of plan and receive complete specifications.



Dear Sir:

Columbus, Nebraska

Gentlemen:

Modoc, Illinois

House well constructed—no corners cut and hidden defects usually left by contractors could not be found when you build your own home. Would welcome your inspection and constructive criticism should you have a representative in this territory.

We are really proud of our new home and we get so many compliments. Everybody says it's the prettiest little home in this part of the country and the carpenter and others have said it's the finest lumber they every saw.

E.S.

L.J.F.



THE GLENBROOKE — With A Carport

Price Given
On Enclosed
Price List

WE PAY THE
FREIGHT



The Carport was originated by the world famous architect, Frank Lloyd Wright, as a substitute for a garage. Its popularity has steadily increased, for while adding attractiveness wherever it is placed, as compared with a garage, it is also economical. It can be added to almost any Aladdin house. Price will be quoted on request. Note the interesting details of the new Glenbrooke design. The projecting brick front of the living room includes a picture window. In our price for the Glenbrooke we have included siding where brick is shown in the front wall. If you plan to use brick as illustrated write us for allowance for siding and paint for that portion of the front wall. Graceful metal porch column, shuttered window and two well-proportioned roof gables complete the picture. The floor plans at left warrant your careful study, giving attractive choices. One features a Utility Room, while the Plan 2 includes a Grade Cellar entrance.

Gentlemen:

Lansing, Michigan

I have now built two homes, one of your Aladdin Homes and one by the old "measure, mark and saw forever" method. I wouldn't go back to the old method for anything, as long as I can buy an Aladdin, if I ever build again. Your homes, plans, and methods are really more than you claim for them. The material is better than can be bought any more at any price, as hundreds of interested visitors during construction all agree. I am very glad I dealt with your company and am sure I have interested scores of people in your homes, many of them prospective customers. Thanks again, for our fine home.

W. E. B.

DON'T DELAY—ACT NOW

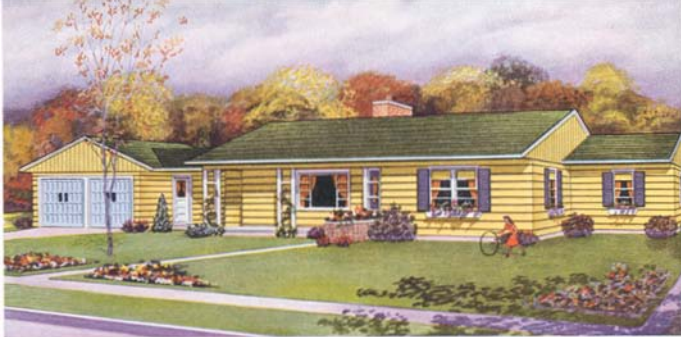
Dear Sirs:

Elmore, Ohio

I am sending you a few prospects of people who have been here to look at this wonderful little house or home. People do continue to come to see this wonderful little home of ours.

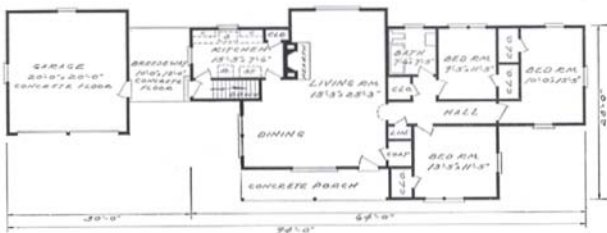
If I did not have so many milestones on my head I would build one every year as I know I could sell them at a good profit. With best wishes and farewell.

F. J. H.



THE PALM SPRINGS — A Typical Western Ranch House

Present-day home builders have shown a tremendous interest in Western Ranch House Architecture. It is a type that is suitable for all climates and is featured by a low roof, wide eaves and covered porch. The breezeway connecting the house proper and garage is an excellent protection to reach the garage in inclement weather. The two plans illustrated are almost identical in exterior appearance. Our plans contemplate concrete floor for both garage and breezeway. We furnish no masonry. Each plan is priced without breezeway and garage. Write for price on breezeway and either one or two-car garage. Send for detail specifications. We pay the freight.



PLAN No. 1



PLAN No. 2

SHOWN
HERE ARE
TWO FINE
PLANS. EACH
CAN BE HAD
WITH
GARAGE AND
BREEZEWAY



THE ATLANTA—Symmetrically Proportioned—

Price Given
On Enclosed
Price List

WE PAY
THE FREIGHT

This pretty design offers a chance to start home ownership on the smallest of savings. Later successes may come, enabling a larger and more expensive home. But either of these designs is the starting point, conserving expenses, inspiring thrift, and saving rent.

The extreme simplicity makes possible applying the owner's labor in very large part, or in fact doing practically all the work of erection. Big savings on cost are thus possible! Literally thousands of our customers, over the years, have had splendid success in erecting and completing their homes. Our instructions, illustrations and drawings are plain and easily understood, with each piece of material marked and numbered to show its place during erection. Every day's labor the owner or friends can put in saves from \$12.00 to \$15.00. And that is what really cuts costs. While this, our newest small plan home was especially designed for a narrow lot, the house having a frontage of 22 or 24 feet, it can, of course, face the street the long way. In that event, we can place the picture window next to the entrance door if desired. The Atlanta expresses grace and symmetry in every line. It is classified as Modern American. Should a basement not be planned, the cellar stairway can be omitted and that space would be utilized to enlarge the bedroom. The floor plans offer maximum efficiency of room arrangement. Write for specifications.

WHEN YOU BUY AN ALADDIN HOME

You Get Dependable Materials,
Superior Workmanship and
Proven Economy.



Save

Time

Save

Money





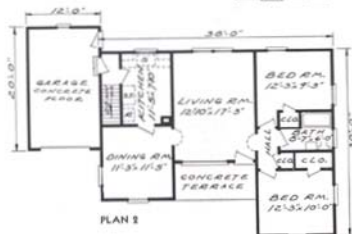
THE PALO ALTO—Picturesquely Western—

Price Given
On Enclosed
Price List

WE PAY THE
FREIGHT

The Palo Alto is presented as a true-to-type Ranch house as the result of comprehensive study by our designers. The appeal of this new pattern of American architecture is constantly growing stronger. The Palo Alto is authentically styled in exterior as well as in interior plan. Notable details are the terraced entrance protected by over hang of the main roof, inviting entrance door and floor to ceiling picture window. All plans incorporate spacious living rooms, which divides the bedrooms and bath from the dining room and kitchen. In

Plan No. 1 the floor to ceiling picture window is shown in the rear of the living room, while in Plan No. 2 and Plan No. 3 it is located in front wall, as shown in the above photograph. Plan No. 3 is priced without the garage, while the exterior wall will be furnished with siding, shingles or asbestos shingles. Our Winston design illustrates asbestos shingles and our Parkway, the double cedar shingles. Our listed price covers your choice without extra charge. Specifications will be furnished for the Palo Alto upon request. Write us.



PAY YOURSELF THOSE HIGH WAGES





THE EL RANCHO—Western Beauty—

Price Given
On Enclosed
Price List

WE PAY THE
FREIGHT



Advanced house design is perfectly expressed in both exterior features as well as interior plan of the El Rancho. While cut stone is used in the projecting living room, enhancing the beauty of the whole, this feature may be altered by the use of either siding or "Shake" Shingles. In our price for the El Rancho we have included siding where stone is shown in the front wall. If you plan to use stone as illustrated, write us for allowance for siding and paint for that portion of the front wall. Graceful roof gable-ends are splendidly proportioned. The entrance door is covered, protecting family and visitors in inclement weather.

Two sizes and plan arrangements are shown here. A special feature is the convenience of a complete bath room AND a powder room to service three bedrooms in the No. 1 plan. This plan includes five closets and two linen closets. Write for detail specifications.

Chicopee Falls, Mass.

Dear Sir:

Let me hand it out to your company also. The lumber was excellent and you've helped us out with every difficulty we had and we've nothing but praise for The Aladdin Company. You've sent us plenty of material. In fact, I also have 14 ft. of cabinets going up in the cellar for my laundry built around my sink and Bendix being built with leftover lumber and scrap. All in all, I extend my thanks to your company and everyone who helped us. Everyone we did business with were grand to work with. Even the building inspector came over on his own time to give us a few pointers. Thank you again. I remain,

J. A. D.

Fergus, Montana

Gentlemen:

I would say I erected this house at a saving of \$3000.00 as compared by local prices, considering the materials far better in quality than I could have bought at the price of the "Norfolk" locally.

Yours truly,
H. G. E.



THE ACACIA—Pretty as Its Flowered Namesake

Price Given
On Enclosed
Price List

WE PAY THE
FREIGHT



The high brilliance of the Acacia flower inspired the naming of this architectural gem. Its beautifully proportioned frame is simple for the sake of economy, yet it is gayly touched with interesting detail—exceptionally large picture window, over-



hanging roof at entrance, newly designed hood over kitchen entrance, and deep shadow lines formed by the heavy double "Shake" Cedar Shingles. Detail specifications will be sent you on request, which will give you all the interesting facts about the Acacia. Write us.

Montoursville, Pa.

South Weymouth, Mass.

Gentlemen:

I might add, that we are receiving many pleasing compliments on our Parkway #1 by the many persons who have inspected our house. We could sell at a nice profit if we desired, but we like it so well and know that we cannot replace it at this cost.

Sincerely,
L. C. R.

Dear Sirs:

We found everything to fit easily and to perfection. The entire project seemed planned for our convenience, from the packing done by you to the erection by us. We are proud of our home and it has been admired by many friends.

Yours truly,
G. E. T.

UNTO THE THIRD GENERATION

GRANDFATHER
SON and GRANDSON

EACH STARTS HIS MARRIED LIFE IN HIS OWN NEW ALADDIN HOME

Aladdin home owners who built and have lived in their Aladdins for over thirty years here testify unsolicited to their satisfaction and happiness. AND their sons and their sons' sons therefore come to Aladdin for satisfaction, safety and economy.

Gentlemen:

Indiana, Pennsylvania

Will you mail me your latest catalog and price list? Since building my Aladdin home some fifteen years ago, I have three sons who very soon wish to follow in the footsteps of their Dad—and build Aladdin. I know they will do well to build Aladdin.

C. W.

Gentlemen:

Harrisburg, Pa.

I would appreciate your forwarding me your booklet on "Readi-cut Homes." It may interest you to know that my father erected one of your Aladdin homes in 1915. Incidentally, it still stands and the only maintenance was a new roof five years ago.

J. R. M.

Gentlemen:

Manitowoc, Wis.

I noticed your advertisement in a Milwaukee paper and realized that my parents had bought and built one of your readi-cut homes in about 1924—shortly before I was born. Now that I am married we are hoping to build a home of our own soon and I wondered whether you have any catalog or pamphlet you could send us. Thank you for your service.

Mr. and Mrs. H. C. K.

Premont, Texas

Gentlemen:

My grandfather built an Aladdin house in 1928 and it is still perfect. Said to be the best built house in town. Now my husband would like to look over your latest catalog.

E. H.

Maidsville, W. Va.

Gentlemen:

Would like to see your latest catalog. It is interesting to recall to you that 28 or more years ago we purchased your Colonial two-story home and it is still one of the most attractive residences in our old home town.

S. C. R.

Gentlemen:

Alfred, New York

About 20 years ago my grandparents built a home purchased from your company. I am happy to tell you it is still in perfect condition and a good looking home. As we are interested in building, would like the catalog described in the enclosed advertisement.

Mrs. W. F.

Gentlemen:

Chicago, Illinois

Enclosed is 25 cents for your catalog of homes. Our folks have had one of your homes for about twenty-five years. It is certainly wonderful and so well designed.

Mrs. P. M.

Gentlemen:

Butte, Montana

Over thirty years ago my husband's father bought and erected an Aladdin home in this city. It has withstood the rigors of Montana winters for these many years. Please send us your catalog.

Mrs. J. W. L.

Gentlemen:

Dillsburg, Pa.

Please send your catalog in four colors. My father bought a house from you about 35 or 40 years ago. He is dead almost 26 years now but my mother lives in their home. My son has the book you gave dad as a gift. Mother gave it to him after father died. It is lovely to look at.

Mrs. R. A. B.

Gentlemen:

Chenango Forks, N. Y.

Will you kindly send your latest catalog to the above address. My dad bought one of your homes about 20 years ago and it is just as good today as it was then. Knowing his home as I do is why I want to have or build my own home and the name Aladdin has always been in my mind for that reason.

D. C. G.

Gentlemen:

East Providence, R. I.

Please send me your catalog of Read-Cut houses with prices. We are interested in your homes due to the fact that you sold my parents a home as far back as 1918.

R. E. A.

Akron, Ohio

Gentlemen:

Please send your new catalog. We are still living in the Aladdin house that we built with our own hands in 1917.

Mrs. H. R. L.

Norfolk, Va.

Gentlemen:

My father-in-law built one of your Aladdin houses in 1906 and it still stands to this day and in excellent condition. Maybe as you say we can "beat the building game" at its own terms.

W. J. H.

Cheviot, Ill.

Gentlemen:

Enclosed find 25c for your catalog. My father built an Aladdin home 30 years ago and it has proved most satisfactory thru the years.

R. C. N.

Sherman, Texas

Gentlemen:

Kindly send catalog of Aladdin homes. My parents purchased an Aladdin house from your company in 1913. Complete satisfaction in the home has made possible many pleasant recollections.

F. C. M.

California, Pa.

Gentlemen:

Please send me catalog of Aladdin Homes. My father bought a house in 1910 or 1912. I raised my family of 7 children in it.

Mrs. E. T.

COMPLETE NAME AND ADDRESS FURNISHED ON REQUEST

QUALITY ENDURES THROUGH THE YEARS



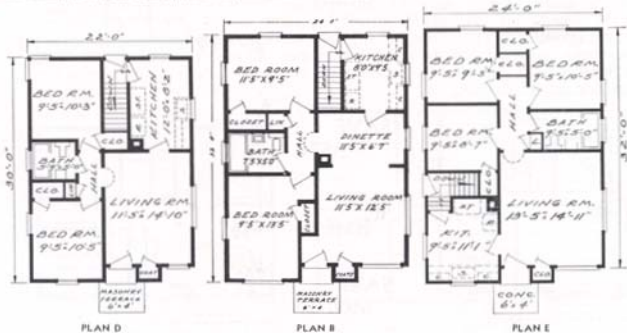
THE SUNSHINE — Classic Simplicity —

Price Given
On Enclosed
Price List

WE PAY THE
FREIGHT

"Effectively efficient" aptly describes the architecture and planning of all three arrangements and sizes shown below. The front elevation is interestingly planned with the projecting gable and picture windows. The roof is a third pitch, giving adequate attic space, especially true when our folding stairway is installed in the hall ceiling. Plan "D" hallway will not accommodate folding stair.

Remarkable utilization of space is evidenced in each of the three sizes—22'x30', 24'x32' and 24'x34'. The plan "E" incorporates three bedrooms, each with adequate closet. Linen closets are arranged in each plan. Plan to do part of the work of erection and you will save a substantial part of the cost. The Aladdin Read-cut System simplifies the work astonishingly. Write for detail specifications, and further information.





THE MAYFAIR

A JEWEL FOR
ANY SETTING

Price Given
On Enclosed
Price List

WE PAY THE
FREIGHT



MAYFAIR

Modest in size but dazzlingly conceived in all details, this newest little home will charm its owner and all who observe it. It is a feature house in all of Aladdin 1952 advertising. The strikingly large picture window



SYLVAN No. 1

"brings the outdoors into the living room." Note the wall space available under the high windows in the living room. The exterior plan is beautifully proportioned. Three sizes are available, one with three bedrooms, shown in the floor plans accompanying the picture of exterior. All have the same exterior design. Whichever plan you select you will have a beautiful modern and satisfying home. Send for detail specifications.



COLONY

SAVE
WASTE
•
SAVE
TIME
•
SAVE
MONEY



SYLVAN No. 2

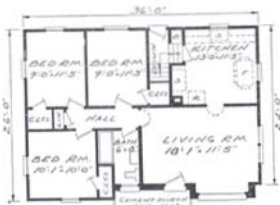


THE PALOMAR—Contrasting Brick and Shingles

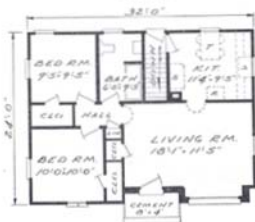
Price Given
On Enclosed
Price List

WE PAY THE
FREIGHT

The deep shadow lines created by our heavy "Shake" shingles are a mark of beauty as pictured above. Simplicity dominates the square form of the Palomar, yet this very simplicity is artistic in its details. Maximum livability and usable living space are also accomplished in the square type of home. The four bed room plan below includes, besides the bath, a separate lavatory or "Powder Room." You will receive additional details and specifications. In our price for the Palomar we have included siding where brick is shown in the front wall. If you plan to use brick as illustrated, write us for allowance for siding and paint for that portion of the front wall.



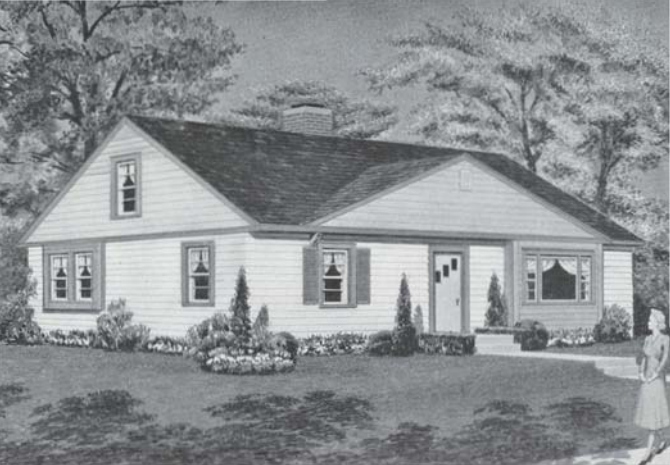
PLAN No. 1



PLAN No. 2



PLAN No. 3



THE GREENBRIER—Modified Ranch House

This house has been described as a "modified ranch house" type. Typical of the characteristics which inspired it, the structure is planned to set close to the ground. When the planting of shrubs is completed its lines are softened and the ensemble is most harmonious. Note the broad gable with louvre which modifies the long expanse of roof. Bay windows on front and side add interesting touches, both outside and inside. Your choice of two interior arrangements will be found in the plans shown. Both are of the same size but plan No. 2 offers opportunity for a "house that grows." Stairway to the second floor makes possible the inclusion of two added bedrooms. Materials for completing the second floor will be quoted upon request. Resale value of a house is a most important consideration when selecting your plan. The Greenbrier will measure up highly to this factor, for it is a standard of good modern design with no distinctive embellishment that might be objectionable to prospective buyers. It would have a ready sale.



GREENBRIER PLAN No. 1

SAVE
WASTE

•
SAVE
TIME

•
SAVE
MONEY



GREENBRIER PLAN No. 2

The ALADDIN Organization's Long Experience
Means the Perfection of Machine Production



THE BREWSTER—Beautiful in Its Simplicity—

Price Given
On Enclosed
Price List

WE PAY THE
FREIGHT

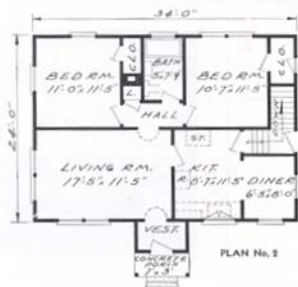
Supremely good taste was employed by our designers when they formulated the Brewster. It is a choice architectural gem, clean in line, employing a form of simple beauty and exquisite simplicity. It is truly a work of art yet most practical in execution for its very simplicity is reason for its astonishingly low cost.

Waste of material is eliminated, every foot of lumber giving 100% value in space, convenience and comfort. The columned and hooded entrance incorporates a commodious vestibule. The interior has every facility needed in a modern home. The excellent living room will more than answer the average family's requirements as to size and wall space.

If you prefer shingles as shown on page 52 for the exterior instead of clapboard siding, we can meet your wishes altho this Colonial type home is very well adapted to siding for the exterior.

A very convenient hood is furnished at the side over the outside door. Complete detail specifications will be sent on request listing all materials we provide for this home.

The Construction Used in an ALADDIN HOME is the Same as That Used in the Best Architect-Designed, Contractor-Built House Erected Anywhere

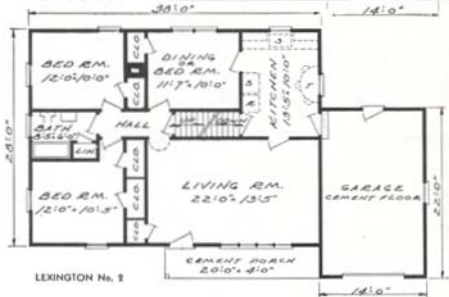
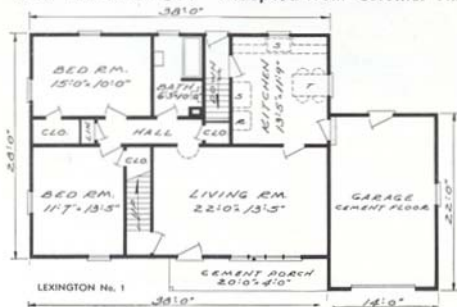




THE LEXINGTON — Adapted from Colonial Times —

Price Given
On Enclosed
Price List

WE PAY THE
FREIGHT



The traditional simplicity and economy of early New England settlers inspired the architectural plans or designs of their rugged homes. Colonial homes are still sturdy and remain as sound as when built two hundred or more years ago. Aladdin designers have truthfully followed the functional form while incorporating the modern features of picture window and attached garage. Two plans are presented for your choice, one with two bedrooms and one with three bedrooms. There is ample reason to believe that the high quality of all Aladdin materials will give a life to your Aladdin home comparable to that of the first Colonial homes. If you desire to finish off the second floor for two bedrooms, write us for plans and prices. Write for detail specifications and further information.



Aladdin Dining Room
In Full Color



THE WILLIAMSBURG—Fascinating in Brick—

Price Given
On Enclosed
Price List

WE PAY THE
FREIGHT

There is something very impressive about this handsome Aladdin plan in brick. While it's a spacious, roomy house it looks even bigger than it actually is. In addition it has unusual features that give the utmost distinction to a home—for instance, the impressive entrance. The graceful, gabled, vestibuled entrance, shown here with cut stone sides—this helps to create a distinguished effect. Notice the dormer windows that add contrast to the roof line. Besides a wonderfully spacious living room, the first floor offers dining room, bedroom, kitchen, dining nook, and lavatory with a rear hall from which a stairway leads to the second floor. There, you will find two additional fine bedrooms, a children's room or sewing room, a bath and three closets. Note that all rooms on both floors enjoy double exposure that provides cross ventilation and excellent light. While our picture of the Williamsburg shows the exterior finished in tan brick, write us for prices for siding or shake shingles if you do not wish to build your home with a brick veneer exterior. Write for specifications.





THE SUMMERSET—Typically Cape Cod—

Price Given
On Enclosed
Price List

WE PAY
THE FREIGHT

Beauty and balance distinguish this perfect example of Cape Cod architecture. Thrifty New Englanders evolved a type of home in revolutionary times that matched their well known characteristics of simplicity, directness, economy and common sense. That it is sound architecture is evidenced by its return to popularity on the designing boards of the present day's leading architects. A living room 18'5" x 13'5"! It's of a size found in few houses twice as large as the Summer-set. A dining room, kitchen and grade cellar entrance complete the perfect accommodation on the first floor. Master bedroom matches the living room in spaciousness, and thoroughly adequate closet space is provided. Every dollar invested in this home gives magnificent values. Quality is built into every part—Aladdin Certified lumber and Aladdin Knotless finish. Complete detail specifications on request.



BUILD IT YOURSELF





THE CONCORD — Sculptured with Sincerity —

Price Given
On Enclosed
Price List

WE PAY THE
FREIGHT

Distinction is given this charming design by an entrance at once original and appealing. Pillars grace the gabled vestibule while an arched ceiling adds a new touch to the design. Narrow side lights on each side of the front door afford light to the vestibule. The main structure of the Concord is beautifully proportioned. Besides a splendidly spacious living room, the first floor contains a suite including bedroom, lavatory, linen closet and clothes closet. These are entered from the separate hall from which the stairway also leads to the second floor. Grade cellar entrance occupies the space under the main stairway. All four downstairs rooms have double exposure for light and air. The fireplace may be built in as shown, or omitted if desired. On the second floor are found two well planned bedrooms, bathroom and four closets. Complete detail specifications mailed on request, without cost.

The Construction Used in an ALADDIN HOME Is the Same as That Used in the Best Architect-Designed, Contractor-Built House Erected Anywhere



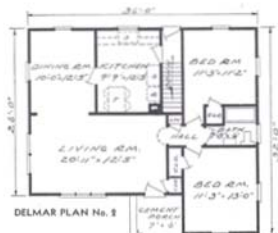
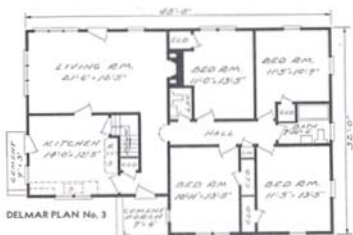
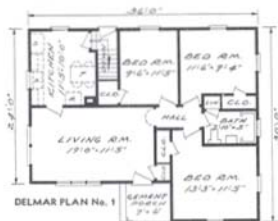


THE DEL MAR—Ultra Modern—

Price Given
On Enclosed
Price List

WE PAY THE
FREIGHT

Aladdin is proud to present this exquisitely beautiful and refreshingly modern home—newly conceived and planned by our designers. The picture above merits a thorough study of its many engaging features. Contrast is achieved in the outside elevation by using perpendicular siding, fronting and next to the front door. The entrance is protected by the main roof projection. An ornamental metal supporting column graces the approach. Note that the mullioned bedroom windows are placed high to afford increased and usable wall space underneath them. A graceful hood of appropriate design protects the kitchen entrance. Write us for detail specifications and further information.





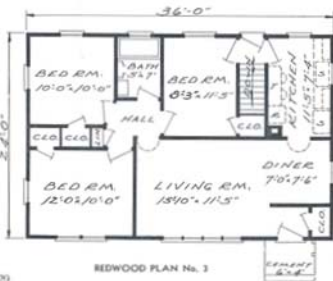
THE REDWOOD—As New, Modern and Fresh as Tomorrow's Sunrise

If you made a trip through New England these days, you would discover the increasing popularity of the old time decorative schemes for both new and old houses—the dark red body paint with pure white trim. Thus we show the Redwood above. Of course you may have any colors that you prefer. All three plans here are adapted for narrow lots, or the house may be placed fronting the long way. Large picture window is incorporated in each plan and the siding, part horizontal and part perpendicular, lends an interesting contrast. Write for detail specifications. Prices on enclosed price list. We pay the freight.



ALADDIN'S MATCHLESS GUARANTEE

What Induces Us to Supply Such Matchless Quality? Aladdin believes the modest home merits the same goodness as the mansion. We have nailed Aladdin quality on the highest attainable pinnacle and have kept it there. While these are excellent reasons for the careful, thinking home buyer, the real undebatable reason is summed up in the goodness, soundness and the thoroughness of the quality of Aladdin Houses. Aladdin's Guarantee: Satisfaction or your money back.



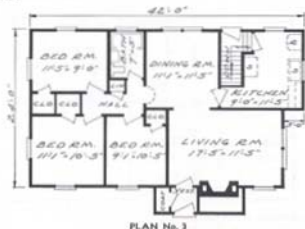
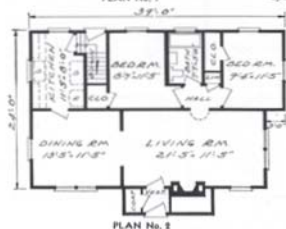
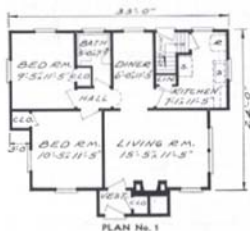


THE MADISON—A True American Home—

Price Given
On Enclosed
Price List

WE PAY
THE
FREIGHT

You will find this charming Madison home dotting the landscape in literally hundreds of communities. This design is typically American and its popularity is assured. The roof lines are especially interesting while the sturdy chimney breathes hospitality. On the exterior we illustrate rugged, artistic shingles of long-lived red cedar grooved and etched to resemble the antique hand-rived shakes of our forefathers. You have a choice of soft, pleasing colors. These shingles are laid at wide exposure for greatest beauty and economy and provide deep, filtering shadow lines resulting from the application of these shakes directly over an under-course of unstained shingles. They lend an element of distinction to this type of architecture. A double thickness and wide exposure gives maximum insulation—keeps your home warm in winter and cool in summer. This attractive shingle exterior is also shown for our Parkway on page 52 and can be furnished in place of wood siding for any homes shown in our catalog. Write us for detail specifications.



ALADDIN ^{READI-CUT} GARAGES



STANDARD No. 5-11' x 22'
STANDARD No. 6-10' x 22'



SOVEREIGN No. 5-11' x 22'
SOVEREIGN No. 6-10' x 22'



SERVICE No. 5-11' x 22'
SERVICE No. 6-10' x 22'



SUBURBAN No. 5-11' x 22'
SUBURBAN No. 6-10' x 22'

GARAGES Our garages are manufactured in two sizes only, 12' x 22' for one car and 30' x 22' for two cars. Garages are priced in single construction; that is, with 2" x 4" studding and bevel drop siding, or double construction, that is with sheathing, building paper and bevel siding or shake shingles to match the house. We furnish complete materials except concrete slab floor. Overhead garage doors are provided as illustrated. We do not sell garages separately.

ALADDIN STORAGE WALL

With our Aladdin Storage Wall it is now possible to keep in one place family possessions usually scattered all about the home. As pictured at the right, space is provided in Section A for hanging clothes, storing shoes and rubbers, also hats. Section B will take care of card tables, luggage, vases, books, etc. In Section C there is a built-in writing desk. We also have Section D, if you wish four sections, which is the same as Section A except the doors are hinged on the right instead of on the left as shown in Section A. Belongings stored thus are always easily accessible (more conveniently than in the average closet). The sections run from floor to a height of 96". Sections A and D are 24" wide, Section B is 36" wide, while Section C is 24" wide. All sections have a depth of 16". One or more sections may be ordered as desired. The sections all have backs and are shipped knocked-down, cut-to-fit and ready for assembly, with complete hardware. The walls are constructed of Douglas Fir plywood which is beautifully grained and will take any kind of decorative finish. Write for prices. Our storage walls are shipped only with our houses. We do not sell them separately.



Section "A" "B" "C"

ROOM SIZES

The sizes shown on catalog floor plans are net dimensions between finished, plastered walls. These dimensions give you the accurate sizes to plan for proper placement of furniture and other equipment for each room.

GABLE MATERIAL

For the white gables illustrated on pages 4, 9, 12, 21, 28 and 33, we furnish exterior plywood veneer which is perfectly smooth. We can omit the plywood and furnish 6" vertical ceiling as shown on page 5, or bevel siding as shown on page 16, or shake shingles. Specify gable material desired when ordering any of the homes mentioned above.

SPECIAL PLANS

The success of the Aladdin Read-cut System depends to a large extent on the reasonable standardization of designs and material sizes. For this reason we find it impractical to quote on special plans of any kind.



THE ALAMO — Radiantly Modern —

Price Given
On Enclosed
Price List

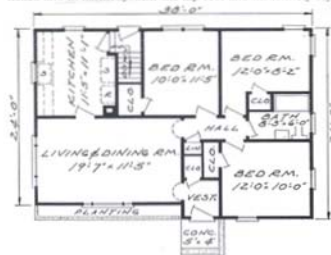
WE PAY THE
FREIGHT

Over forty-six years' experience in keeping abreast of the desires and needs of American home builders are summed up in the Alamo which will be one of the leaders in our new designs. The exterior lines are splendidly proportioned and in harmony with the hip roof and moderately styled projecting eaves. Note the large picture window with

side lights which harmonize with the horizontal window lights in all other windows. The outside walls are finished with the newest development—long-lived red cedar shingles, grooved and etched to resemble the antique "hand-riven shakes" which are already dip-stained when you receive them. They, therefore, do not require the expense of painting. These shingles come in four shades.

Three interesting floor plans are shown for the Alamo. Whichever one you choose will result in the identical appearance shown in our attractive picture above. The brick work in front is not part of the foundation and may be omitted without detriment to the appearance of this charming Aladdin home. Write for specifications and further information.

**SOLD BY THE GOLDEN
RULE FOR FORTY-SIX YEARS**



READ
PAGES
2 55
3 58
54 59
62



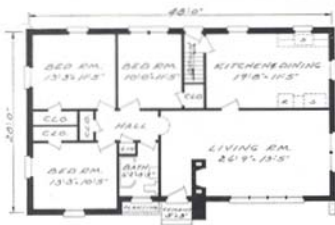


THE BRENTWOOD—One of ALADDIN'S Newest—

Price Given
On Enclosed
Price List

WE PAY
THE
FREIGHT

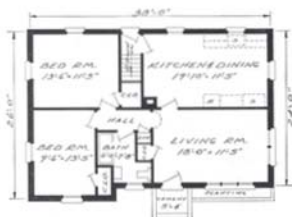
Approached from any side, here is a home of impressive beauty. Our designers were inspired by the inclination of present-day home builders for well-proportioned dignity—with simple embellishment. The gabled projection of the bedroom creates a pleasant break in both the front wall and the otherwise plainness of an unbroken roof. Note the main eaves at the front which afford protection to the front entrance door. And the living room is beautiful with an exceptionally large picture window. Four plans are shown, two of two bedrooms and two of three bedrooms. Ample space is available in the kitchen for a dining table. This Aladdin Home is shown in brick veneer and priced without siding; we will quote price for siding for the outside walls. Write for specifications.



BRENTWOOD No. 1



BRENTWOOD No. 2



BRENTWOOD No. 3

BRICK VENEER

The Brentwood shown above is priced without siding or shingles for the outside walls and shown in brick veneer. We do not include brick or masonry materials of any kind. If you do not

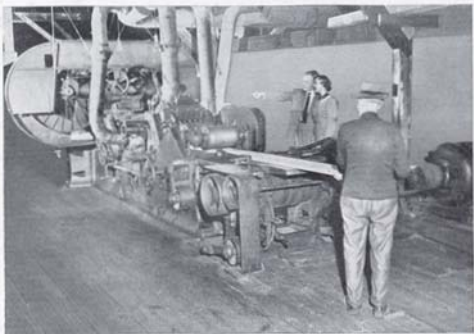


BRENTWOOD No. 4

wish to use brick veneer on the Brentwood and prefer wood siding as shown in the illustration on page 54, write us. We do not furnish any of our homes having solid masonry exterior wall, such as solid brick, concrete blocks or stone.



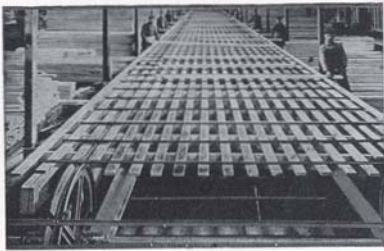
Birdseye View of ALADDIN Mills at Bay City — Main Building 1000 Feet Long



Between five and six million feet of thoroughly dry lumber are housed under cover at all times in the five large Aladdin Mill Buildings shown above. No lumber is piled or yarded out of doors. This means that our lumber enters the cars directly from inside storage and reaches you without being subjected to rain or moisture. We do not buy green or partially dry lumber of any kind. No house is well-built unless thoroughly seasoned lumber is used. Dry lumber is pre-shrunk which prevents shrinking later, has superior nail holding qualities and is more resistant to decay. It is stronger and sturdier.

SHOWN HERE IS HOW MACHINERY TAKES THE PLACE OF HAND LABOR

The big machine at the upper left rips, resaws, and planes the rough boards at the rate of 4000 board feet an hour. The boards and "dimension" lumber then drop ahead on a "gang trimmer," the battery of saws shown at the lower left, where they are cut to exact length, and with great accuracy. The picture lower right illustrates how the cut-to-fit lumber is conveyed from the saws to various storing bins for assembly in freight cars before shipment to our customers. All other materials are handled by this same mass production method. This is just one place ALADDIN saves you money.





THE NORFOLK — Two Interesting Plans —

Price Given
On Enclosed
Price List

WE PAY THE
FREIGHT

Highly popular in its appeal to present day home builders is the type represented by the Norfolk. And there is good reason behind this popularity. Its simplicity of design, the absence of unnecessary embellishment or furbelows, insure that no money is wasted. Every dollar expended for material and labor achieves the maximum of home comfort, convenience and utility. Two plans are shown below to meet your particular choice. In Plan No. 1

access to the second floor is provided by an enclosed stairway. It is of course possible to finish off this space for use as either storage or added sleeping quarters. Plan No. 3 includes a utility room when basement is not desired. Folding stairway can be installed in ceiling of hall to reach second floor. See Page 64. Complete detail specifications mailed on request.



PLAN No. 1



PLAN No. 3

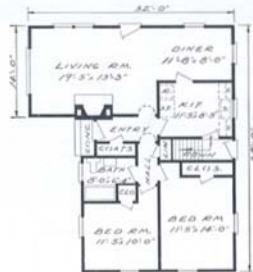


THE PASADENA—For a Narrow Lot—

Price Given
On Enclosed
Price List

WE PAY
THE
FREIGHT

Here is a home of ultra-modern design that can be placed either way on your lot. Frontage required can be as narrow as forty feet, or when placed the long way on your site, can still occupy a fifty foot lot. Take especial note of the large picture



PLAN No. 1



PLAN No. 2

window, in size, from floor to ceiling. You may have this window either as shown in the photo above or we will transpose it to the rear of the living room and place the mullion window, now in the back, at the end of that room. Plan No. 2 provides three bedrooms although it is the smaller of the two plans. Specifications will be furnished on request. Write us.

ALADDIN READI-CUT HOUSES, SOLD BY THE GOLDEN RULE

Bloomington, Illinois

Cudahy, Wisconsin

Dear Sirs:

When we applied for our loan (a G. I.) the loan company never thought we'd be able to build for what we figured. I think I can safely say that completely built with all materials from our lumber yards the house would cost at least \$10,000. (Comparable houses are selling for \$12,000.00.)

I would like to mention that we had more than enough materials.

We have shown our house to dozens of people and we would be more than happy to help and explain about loans and contracts to anyone who is interested in building one of your homes.

Since I did most of the carpenter work myself, (including installing the windows and most of the doors). I would like to point out that I'm not a carpenter by trade. I make eye glasses—anyone can follow the simple plans.

J. M. T.

Dear Sirs:

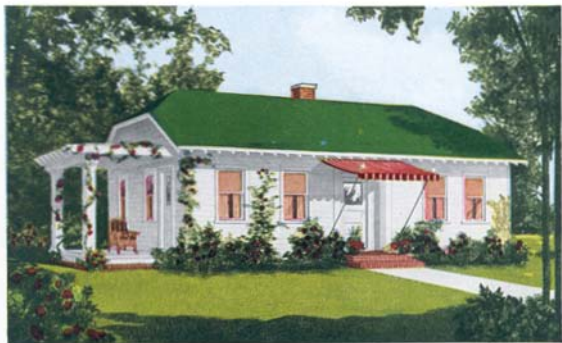
I wish to thank you for your fine service and as a homeowner I'm proud to say I do have a very nice home.

My wife and I are very well pleased with our home, The Alamo, and all of our friends also say that it is a very beautiful home.

We built our home right from the foundation up to its present state, and when we do have it complete, we will send pictures of our home to you. We have Texas Cordova stone siding all around the house and it sure is beautiful. This stone is mined in Texas.

You can quote me in saying that the Aladdin is the "best home."

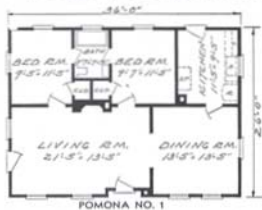
J. A. M.



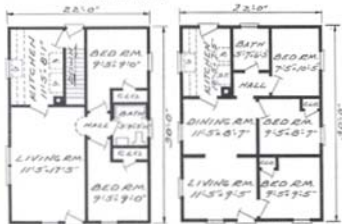
THE POMONA—VINECLAD—

Price Given
On Enclosed
Price List

WE PAY
THE
FREIGHT



POMONA NO. 1



POMONA NO. 2

POMONA NO. 3

Refinement of detail and true simplicity distinguish this well-proportioned home. It satisfies every wish in beauty, comfort, convenience, and too, remarkable value. Either Plan Two or Plan Three of the Pomona can be turned to face the street the long way of the house by transposing the front door. The pergola type porch roof harmonizes with the exposed rafter ends. This porch is quoted as an extra in our price list attached. Write for our specifications for the Pomona.

BUILD IT YOURSELF

The Colonial atmosphere of the Pomona is very appealing to the home owner for it bespeaks hospitality, old-fashioned simplicity and true goodness. From its clean, straight timbers to its beautifully machined siding and handsomely grained woodwork, it represents the very best in materials. Five large rooms and bath are shown in the Plan One—truly a home to be proud of. The Pomona has been one of our most popular houses for many years and has always given its owners highest satisfaction.

Gentlemen:

Valley, Nebraska.

We will be glad to cooperate with you in showing our home to prospective buyers. We are proud of it and proud of ourselves for having the courage to build it as we did.

Very truly yours,
C. M. S.

Lebanon, Ky.

Dear Sirs:

Our Aladdin Rosewood No. 1 has fulfilled all of our hopes in quality and beauty. Thank you for your great part in making our home possible.

Sincerely,
Mrs. W. H. W.



THE WINSTON—Distinctive Exterior—

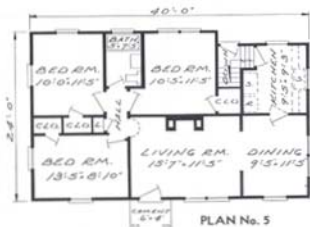
Price Given
On Enclosed
Price List

WE PAY THE
FREIGHT

One of the best developments in plastic building materials is the Cement-Asbestos wall shingle which is pictured above on the side walls of the Winston. These shingles are 24x12 inches in size, fireproof and never have to be painted. We can, of course, furnish them in place of siding for any Aladdin house. Write for information.

The Winston is one of our best designs and we present it in two attractive sizes. A special feature of this home is the original columned entrance rising from a masonry terrace. A study of the floor plans below will show you a choice of size and design that covers a wide range of investment. Plan No. 1 is 40x24 feet over-all and includes large living room, sun room, dining nook, kitchen, grade cellar entrance, two bedrooms, bath and closets. Fireplace may be omitted if not desired. Plan 5 will warrant careful study to appreciate the desirable features. Write us about the plan that appeals to you. Complete detail specifications mailed on request.

QUALITY ENDURES THRU THE YEARS



The Construction used in an ALADDIN HOME is the same as that used in the best Architect-designed Contractor-built house erected anywhere



THE BROCKTON—Warmly Hospitable—

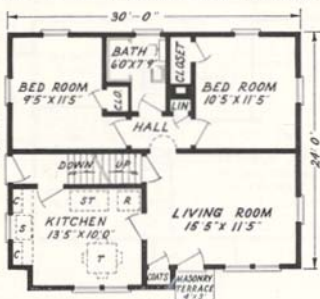
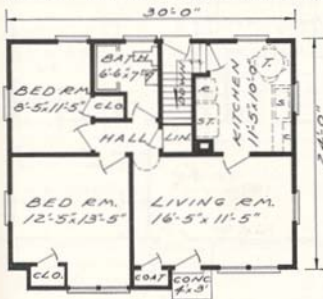
Price Given
On Enclosed
Price List

WE PAY THE
FREIGHT

The Brockton is one of the most popular small homes of the past year. A careful study of its interior arrangement reveals the last word in comfort, convenience and efficiency. Ample wall space and cross ventilation have been accomplished in every room by our designers. Note that it contains four closets. Two plans are presented, both

plans show a cellar stairs where a basement is part of the owner's wishes. A stairway leads from living room to second floor in plan No. 4, which offers a world of added space. Our price does not include flooring or partitions for the second floor but these things can be added now or later if desired. Write us for detail specifications.

SOLD BY THE GOLDEN RULE FOR FORTY-SIX YEARS





THE BRISTOL—Brilliantly Modern American—

Price Given
On Enclosed
Price List

WE PAY THE
FREIGHT

The Bristol is embellished with two typically Colonial features, the front entrance and the bay window in the dining room. Fluted pilasters bordering each side of the front door, are topped by a head casing designed with dentils. This beautifully proportioned ensemble is of true Colonial inspiration, and affords a genuine welcome to those who enter its portals. The Bristol has proven very popular and has received loud praises of its beauty, convenience and economy from those who have built it. Its interior arrangement includes very desirable features of the ultra modern American home. The Plan B arrangement provides 3 bedrooms of a commodious size that will take care of the needs of the average family. The 2 bedroom arrangement, which is the Bristol, Plan A, provides dining room accommodations. Both plans surely deserve a careful study to be fully appreciated. We will be glad to discuss with you further details of your individual wishes. Write us for detail specifications.



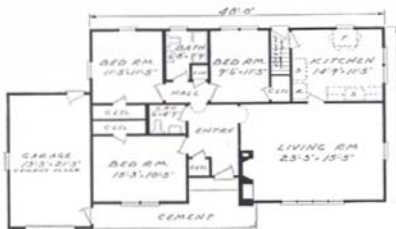


THE SANTA BARBARA—

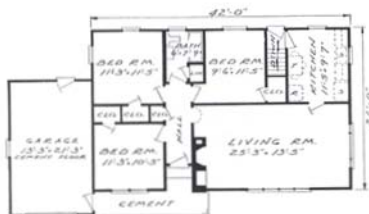
An Exterior of
Arresting Contrasts

Price Given
On Enclosed
Price List

WE PAY THE
FREIGHT



PLAN NO. 1



PLAN NO. 2

Rawlins, Wyoming

We are most satisfied with our home in construction, appearance and genuine livability and feel it is comparable with \$20,000 homes as found in this locality.

C. E. S.

East Helena, Montana

Due to the fact that we are the first Aladdin Home-owners in East Helena in several years, we have had a great number of people visit us from the day the house arrived and even now that we are living in it. May we also say how pleased we were with all the lumber and materials received.

J. M.

Almost dramatic in its harmony of blending colors, and contrasting exterior wall materials, this latest Aladdin by our designers will take a leading place for 1952. It is distinctively different in many ways. The covered front entrance pleasantly merges with the protected garage entrance. Perpendicular siding breaks, in an interesting fashion, from the Cedar "shake" Shingles which enclose the living room. A metal post graces the approach, while a sturdy chimney completes the picture. Both plans shown here include three bedrooms, and in each especially large living rooms with ample wall space. The larger plan No. 1 includes, besides the bath, a "Powder Room". Detail specifications and further information about the Santa Barbara will be gladly sent to you on request.

For further plans on the
Santa Barbara see Page 50



THE BEVERLY—Marked by Grace and Beauty —

Price Given
On Enclosed
Price List

WE PAY THE
FREIGHT

The recessed entrance of the Beverly, edged by fluted pilasters, and a genuine classical front door give distinction to this home. Four gables embellish the roof lines in an interesting way and an artistic touch is the substitution of smooth surfaces for the conventional siding in the gables facing the front. The picture window of wide expanse in the living room insures an exceptionally light and cheerful home. Below you will find a three bed room plan and a two bed room plan. Nothing has been omitted by our designers that goes to make a livable, comfortable and complete domicile. Vestibule and cloak room are desirable adjuncts to the home having permissible space for these advantages. All rooms are well proportioned for the service required of them. Kitchens of high efficiency and ample accoutrements are the result of careful planning. Should you desire The Beverly you will make a happy decision and one of great comfort and satisfaction. Write us. Every item of material furnished for the Beverly is of the very finest grade of material and is guaranteed by us to meet with your complete satisfaction. Write for specifications.





THE MAGNOLIA—With Terrace and Gallery—

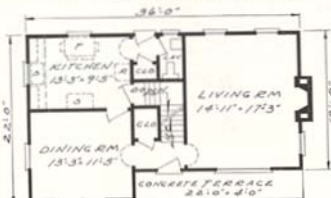
Price Given
On Enclosed
Price List

WE PAY THE
FREIGHT

Here is a two-story home plan that has just about everything the modern home maker aspires to. In plan it is distinctly original, particularly its fascinating upper gallery which offers protection from the elements to the front terrace. The second story front gable is designed with perpendicular beveled edge siding, a sure touch of contrast, which can be further emphasized by using a pastel color (if desired) for this part of the exterior.

Take especial note of large picture window in the living room, which extends from the base board to the ceiling, the very latest feature in homes of 1952. The entrance hall gives access to the living room, dining room, stairway and cloak closet. The kitchen is sufficiently spacious for a dinette set. "Powder room," or lavatory is a part of first floor convenience. Note the large master bedroom with two additional bedrooms, bath and four closets on the second floor. This admirable design is sure to be a permanently happy selection wherever it may be built. Write for further details.

You Can Build It Yourself



ALADDIN'S Matchless Guarantee

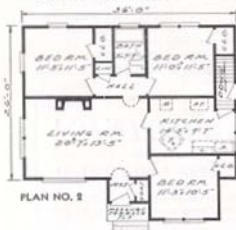
What Induces Us to Supply Such Matchless Quality? Aladdin believes the modest home merits the same goodness as the mansion. We have nailed Aladdin quality on the highest attainable pinnacle and have kept it there. While these are excellent reasons for the careful, thinking home buyer, the real undebatable reason is summed up in the goodness, soundness and the thoroughness of the quality of Aladdin Houses. Aladdin's Guarantee: Satisfaction or your money back.



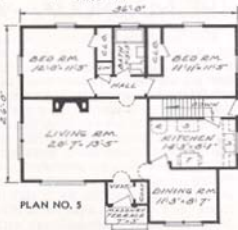
THE PILGRIM—Has Achieved Immense Popularity

Price Given
On Enclosed
Price List

WE PAY THE
FREIGHT



Skillful planning of Colonial and modern details is immediately evident in the picture of the Pilgrim shown above. In Plan 4 and also in Plan 5, we can arrange a stair to the attic leading out of the living room and running up over the stair to the basement. This item is not included in our list prices but we will be glad to quote on this change which will include windows for the second floor. Write for detail specifications.



ATTIC

Turn to page 64 and note the beautiful arrangements that can convert an attic into a usable second floor.



PILGRIM with BREEZEWAY and GARAGE

The photo above pictures the Pilgrim with the ever popular breezeway connecting the house proper with the garage. The breezeway can be used as a shady porch, outdoor dining place and a covered space for garden furniture and children's playthings. It affords excellent protection to reach the garage in inclement weather. We can quote on furnishing the above described breezeway with garage (for one car or two cars) for the Pilgrim home or most any Aladdin home shown in our catalog. Side kitchen window furnished all plans.

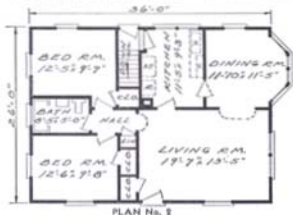


THE ROCKPORT—Authentically Cape Cod—

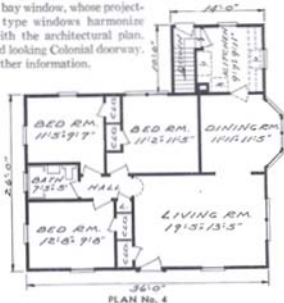
Price Given
On Enclosed
Price List

WE PAY THE
FREIGHT

A touch of originality is given this wholesome design by the creation of a bay window, whose projecting cottage type windows harmonize splendidly with the architectural plan. Note the good looking Colonial doorway. Write for further information.



READ
PAGE
18



The Rockport is shown in three plans, each with special features to recommend it. Large living rooms are a desirable part of all plans, each has attractive dining rooms with bedrooms and baths efficiently designed. Trimmed shutters add balance to the windows and contrast to the color scheme. Another noteworthy feature is found in the pilasters at each corner of the house.

SOLD BY THE GOLDEN RULE—SATISFACTION OR YOUR MONEY BACK



A study of Aladdin specifications will reward you with the knowledge that nowhere can be found quality to exceed that which is a part of Aladdin houses. Finer materials cannot be had for we have used the greatest care to seek out and use the very best. Write for detail specifications.

BREEZE WAY and GARAGE

The Plan 5 as at the left portrays the ever popular breeze way and garage. This breeze way and single car garage are included in the price quoted for Plan 5. We can quote on a two-car garage instead of a one-car if desired.

QUALITY IS REMEMBERED LONG AFTER PRICE IS FORGOTTEN

All exposed lumber both inside and out in every Aladdin house is clear and free from knots or other defects—and is kiln dried.

The framing lumber (dimension) is free from any defects that might impair its strength and is thoroughly Air Dried and Seasoned.

U. S. Naval Academy
Annapolis, Md.

Dear Sir:

I now have a home here in Annapolis which I purchased from you in 1921. This house is as good today as when built and far better than some homes in this locality. No signs of shrinkage or settlement anywhere whereas my neighbor, having built with local lumber, with a moisture content far beyond what should be, has done considerable patchwork on plaster, and has lowered the base mold three times to keep up with the shrinkage of floor joists, where mine is as tight as when built. You may quote me if you wish because of its truth. Please forward all necessary information as is possible on your catalog. It will be appreciated.

H. W. D.



This Aladdin High Standard of Excellence has constantly been maintained throughout the forty-six years record of The Aladdin Company.

Gentlemen:

Coralville Heights, Iowa City, Iowa

We're very well satisfied with all the lumber. It all fit perfectly. If things ever get anywhere near back to normal again, we will probably build another Aladdin house. We can't say enough for them, and the reliability of The Aladdin Company. There has been several people gotten your address from us.

B. W.

To Appraise properly the flawless value which Aladdin lumber builds into every home, it is only necessary to inspect one that is under construction, or to visit our Bay City Mill and see the materials as they are being loaded into the cars. There is an Aladdin near you wherever you live.

Dear Sir:

Negley, Ohio

I have been very pleased with Aladdin materials and the prompt courtesy in which all matters concerning my questions, order and shipment were taken care of. In appreciation of this courtesy, I will be glad to answer any further questions of The Aladdin Company or its prospective customers in this area.

R. W. M.

The average sized Aladdin house contains 4503 pieces of lumber. Every piece has been carefully machined, every piece will be of the quality described above, every piece is guaranteed to arrive and to be sufficient to complete the home.

Dear Mr. Peyton:

Charleston 4, W. Va.

The Aladdin Company is reliable, having had years of experience manufacturing ready-cut homes. It was my pleasure to visit the factory in Bay City prior to placing the order for my home, but this is not necessary due to the integrity of the firm. My home is located among the newer and better homes of Charleston and it is a satisfaction to know that it contains good materials which are not incorporated in many of the expensive homes erected since World War II.

S. E. B.

These facts and the honorable history of The Aladdin Company justify you in extending your full confidence in the satisfactory outcome of your dealings with the Company.

State of



Michigan

Whereas, It is the province of the **Michigan Agricultural Society** to recognize and assist in advancing all improvements both along Agricultural and Industrial lines; and

Whereas, The conservation of time and material in the construction of buildings is distinctly along the line of such advancement; and

Whereas, The Aladdin house designed and constructed by the **Aladdin Company** for the Northeastern Michigan Development Bureau, which house has been recently erected on the grounds of the Michigan Agricultural Society, is a strong demonstration of saving of expense in building by scientific, practical, economical and successful conservation of material; in the elimination of waste in both material and labor; and

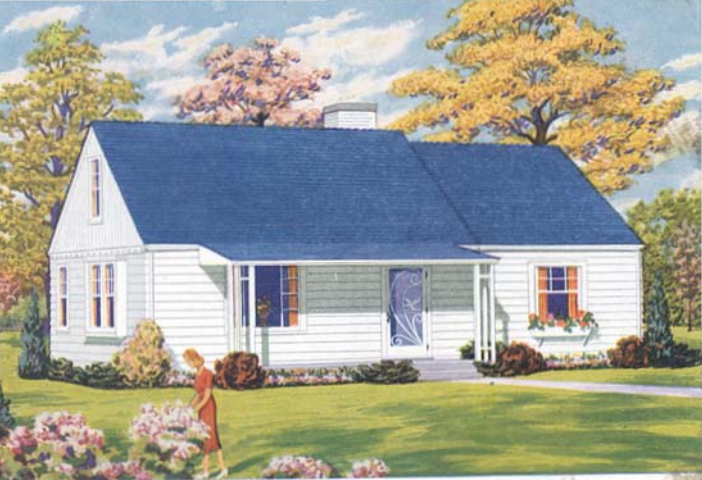
Whereas, The Aladdin Company originated, perfected and established the Ready-Cut System of Construction, therefore be it

Resolved, That the Michigan Agricultural Society does hereby award to the Aladdin Company a certificate of merit consisting of a Gold Medal suitably inscribed, and the same is hereby authorized.

Dated *September 8* 1914

G. S. Dickinson
Secretary and Manager.

Evidence of ALADDIN'S LEADERSHIP
BEFORE WORLD WAR I, and **STILL LEADING IN HOUSE MANUFACTURING IN 1952**



THE NEWPORT—An Original and Arresting Design—

Price Given
On Enclosed
Price List

WE PAY THE
FREIGHT



PLAN No. 1

BRICK VENEER

Any Aladdin Home shown in the catalog with siding or shingles on the exterior can be built having a brick veneer exterior, which we do not furnish. Write us for the allowance for omission of siding, paint and nails if you wish to veneer the exterior with brick. We do not furnish any of our homes for a solid masonry exterior wall such as solid brick, concrete blocks or stone.

As new, as fresh and as lovely as tomorrow's colorful sunrise, the Newport is a shining example of all that is good in a modern and modest home. The usual severity of a plain roof is broken by the slight offset at the right, the porch-roof with triple columns blends perfectly and protectively into the whole structure, while the picture window is well proportioned and attractive. Note the left elevation where you find perpendicular siding in the gable, offering contrast to the usual siding by separation at the ceiling line with dentils. The projecting mullion window completes a picture of originality and charm. Write us for optional price on ornamental screen door shown on the Newport. Complete detail specifications mailed on request.



PLAN No. 4



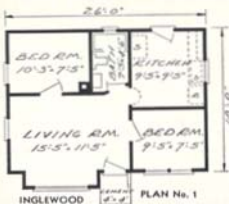
PLAN No. 5



THE INGLEWOOD—Happily Proportioned and Gay—

Price Given
On Enclosed
Price List

Here is a home that will gladden the hearts of those who are looking for a modest, compact home. Its exterior features are thoroughly up-to-date, presenting an extended and large picture window with modern front entrance and door. The three floor plans in three sizes offer you a choice to meet your wishes as to cost—and plan. All materials going into the Inglewood are of the same fine quality—the very best—that is furnished for our largest houses.



SAVE
WASTE
•
SAVE TIME
•
SAVE
MONEY



Kramer, North Dakota

Dear Sir:

I am very well satisfied with my Cedars No. 1. We are proud to have such a nice home and have had people come from quite far to inspect it. All thought we had done very well and that the plans were simple to follow.

E. C. N.

Brookville, Ohio

Dear Sir:

We didn't run short of any material. Fed we have saved quite a bit of money by building an Aladdin house. We have showed nine couples through our home who were interested in Aladdin homes and will gladly show many more. We are very proud of our home.

A. H.



THE RIO GRANDE

THE RIO GRANDE

Shown here is an additional floor plan to the charming Rio Grande. For those who want a well-designed, compact home, this plan will fill the needs of the modest family. The more-than-ample kitchen and extra large living room are in complete harmony and have much of the "flavor of the Old West." Refer to page 4, for other plans of the Rio Grande.

PLAN NOW—DONT DELAY BUILD IT YOURSELF

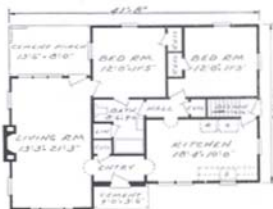
Clyde, Ohio

Dear Sirs:

My father and I did all the labor of building the house including the plumbing, wiring, etc. The only thing hired done was the installation of the heating unit. We did all the labor during our spare time (weekends, after daily work and during our two-week vacation from the local plant). I wish to say that we did not encounter any difficulty at all in your "Readi-cut" system; everything fit together. I was not short any materials and in every case you have the materials figured right to the inch and then allowing a safe margin of extra. I have received countless compliments on the house from everybody who sees it. I have a corner lot and the house really "stands out."

In closing I wish to say that I have been very happy in dealing with your fine and honest organization.

Gratefully yours,
J. T. H.



PLAN No. 3

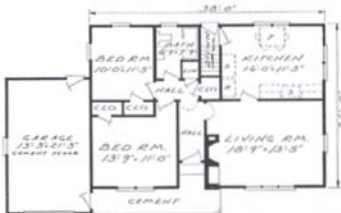


THE SANTA BARBARA

THE SANTA BARBARA

For gracious living, here is a home that warrants a very close inspection. The center hall and cellar stairs of the Santa Barbara divides this plan into two spheres of living. The living room and kitchen is separated from the sphere of rest and relaxation containing the two large bedrooms and bath. The living room is enchanting with its large picture window, giving it grace and beauty unexcelled for a modest home. The large, efficient kitchen has a "down-to-earth" quality which will be a joy to every householder. A large part of a woman's life is spent in her kitchen. With this fact in mind, we have designed this floor plan for the most in comfort and efficiency. Refer to page 41 for other plans of the Santa Barbara.

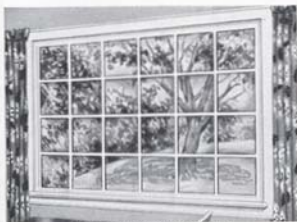
READ PAGES
2, 3, 54,
55, 58, 59, 62



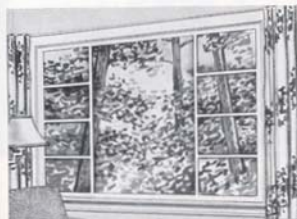
PLAN No. 3

ALADDIN READI-CUT HOUSES ARE NOT PREFABRICATED

Optional Materials and Equipment



PICTURE WINDOW STYLE 1



PICTURE WINDOW STYLE 2



PICTURE WINDOW STYLE 3

PICTURE WINDOWS The recent vogue of installing picture windows is both attractive and sensible. Practical, because this type of window enhances the attractiveness of any home and practical, because of the better light in the room in which it is placed. The above picture windows do not open for ventilation and as illustrated, are one complete sash. Style 1 and 2 can be furnished in place of any single or double (mullion) window and are available in two sizes—5'4"x4'6" and 7'0"x4'6". Style 3 is supplied in one size only—7'0"x6'0". Our picture window No. 9 is approximately 7'x6', divided into nine lights, as shown on page 28 and page 29. The picture window No. 10 is approximately 9'6"x6'0", divided twelve lights and is illustrated on page 24 and page 33. Windows No. 9 and 10 are shipped knocked down, ready to assemble for easy handling. Write for prices. These windows are not sold separately from our houses but are included when shown in plan and illustration.

VISIT US — You are cordially invited to visit us at our Bay City offices, located at Fourth and Washington, across from the Bay City Post Office. We will be proud to show you through the Aladdin mills where you can inspect our lumber and see our houses being manufactured. We can also show you some of the many Aladdin Homes built in Bay City.

SHINGLES Instead of wood siding for the outside walls we can furnish artistic shingles of long-lived red cedar grooved and etched to resemble the antique shingles as illustrated on page 30 and also on page 52. The shingles are laid at a wide exposure with a double thickness at the butt. You have your choice of either siding or these shingles at no difference in price. Shingles come in Green, Gray, Burgundy, Brown, or White.

ARCHES We include in the price for each home square cased openings or materials to build a curved plastered arch where arch openings are shown in the floor plan. We will furnish either type with your home. If you use dry wall for the interior, such as plaster board or wall board, we will furnish square cased arches as the curved arches can be used only when you plaster the interior. Specify the kind you want.

CELLAR WINDOWS We can furnish a complete cellar window unit already assembled with hardware in place, including glazed sash and the cellar window screen, for either a 2 block high opening or a 3 block high opening. For either cellar window leave the foundation wall opening 32 1/4" wide. It is not necessary that the windows be shipped before the house as they can easily be set in the foundation wall when your materials arrive. Write for prices.

OAK FLOORING "Select" oak flooring can be furnished in any or all rooms of any Aladdin home. If wanted, write us for prices and state in what rooms you will wish to use the oak flooring.

KITCHEN CABINETS Kitchen cabinets can be furnished in accordance with catalog floor plan layouts. These kitchen cabinets are shipped to you direct and are complete—fully enameled (white) outside and inside. Doors are hung, friction catches applied, door and drawers prepared for pulls. These cabinets are finished in mar-resisting, high lustre white enamel. See pages 54 and 60. Write for prices.

SUMMER COTTAGES We have prepared a special pamphlet illustrating our Aladdin Summer Cottages. This pamphlet will be sent to you on request and without obligation. When writing us please state if you are in possession of our regular catalog.

FOUNDATION PLANS A foundation plan for the home of your selection will be mailed you complete with instructions for laying out the foundation wall upon receipt of a deposit of \$5.00. Be sure to get the foundation plan for your home before starting your foundation wall.

**PRICES QUOTED ON ABOVE ITEMS
ARE FOR SHIPMENT ONLY WITH YOUR HOUSE**



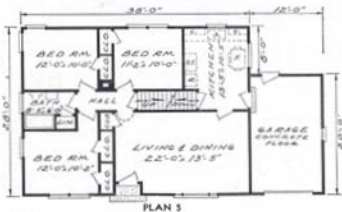
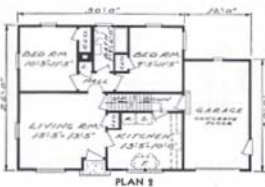
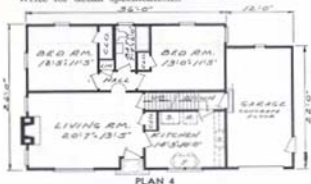
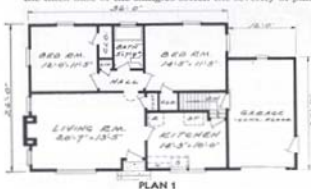
THE PARKWAY—New and Modern—

Price Given
On Enclosed
Price List

WE PAY THE
FREIGHT

This actual color photograph of the Parkway pictures one of our newest modernized Colonial designs—truly a "Home of Tomorrow." Here for the first time, too, we are showing the newest thing in insulated heavy outside cedar shingle walls. Note that deep shadows thrown by the thick base of the shingles soften the severity of plain

white walls. Under each shingle is an undercourse of unstained cedar giving added insulation value. All shingles are dip stained when received by you which further saves the cost of painting your new home. Write for detail specifications.





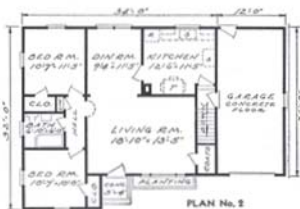
THE EL PASO—Expresses the New Look—

Price Given
On Enclosed
Price List

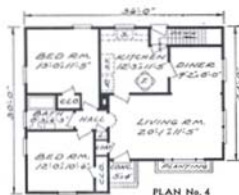
WE PAY THE
FREIGHT

The El Paso expresses the "New Look" in the currently changing type of American home design. Expanded frontage, moderately following the Ranch house plan, it also achieves distinct individuality. Observations of recently built fine homes will disclose the present popularity of hip roofs as illustrated above. Resale value in the home is an important factor and this is insured by good appearance, good plan and highest quality.

The exterior walls are shown with our long-lived red cedar shingles, grooved and etched to resemble the antique "hand-rived shakes." They are laid at wide exposure for greatest beauty. This new method of laying shingles, double thickness, gives maximum insulation. You may have your choice of several soft, pleasing colors. Wide siding will be furnished if preferred. We can furnish plans 1 and 2 shown here without the garage section at a lower cost to you. Ask for prices.



SAVE
WASTE
•
SAVE
TIME
•
SAVE
MONEY





BRENTWOOD—Shown with Siding Exterior

THE BRENTWOOD

In order to give you an idea of the attractiveness of the Brentwood in siding, we show a photograph of it with this particular exterior treatment. The Brentwood is regularly priced for a brick veneer exterior but we will gladly quote on furnishing siding, giving you an exterior as illustrated at the left. Write us for prices on the siding

Berlin, N. J.

Gentlemen:

Many thanks for the very useful gift received from your firm. This is an addition to the already splendid Bristol A. I take this opportunity to again thank you for your fair business dealing and service superb and, dollar for dollar value, this house cannot be equalled locally. It will interest you to know that your house withstood the recent Jersey hurricane without losing a single shingle while the house next door had over forty shingles torn off.

Very sincerely, E. B. T.

PICTURE WINDOWS

We can substitute a picture window for a single or double window in any of our plans at an extra cost. Write us for prices. Our picture window designs are shown on page 31 of this catalog and come in three styles. Styles 1 and 2 are furnished in either 64" width or 84" width. Style 8 is furnished in the 84" width only.

NOTE—Name and address of any letters furnished on request. WRITE US.

Jacksonville, Ill

RANCH HOUSES The inspiration for the ranch house type of home originated in the West and its present great popularity is based on sound reasons. It is a one-story type home which features plenty of light and air. Its longest dimension usually faces the street or road and its approach is inviting and friendly. If you require a one-car garage, we will be glad to quote with breezeway connecting, or if you desire a two-car garage, we can quote the arrangement as shown on page 13.

Dears Sirs:

We just can't praise the Aladdin Read-cut Homes enough. We found all blueprints and instructions simple to follow, every piece fitting as you stated. No shortage of material. I will always recommend Aladdin to anyone wishing to build a home.

Very truly yours, Miss R. T.

WELL PLANNED INTERIORS

Sopris, Colo.

Dear Sirs:

We moved into our new home September 1st. We love it. Many people have come in to see it and marveled at the fine construction, fine planning and its compactness. Considered to be the best house in town.

Respectfully, S. B.

Mt. Savage, Md.

Dear Sovereign Brothers:

We want you to know we're warm and snug in our Aladdin "Norfolk" home. Our friends are surprised how large this home is on the inside and at the lovely woodwork and floors. Everything will last us a lifetime, and it should to our successors, too. We sing praises for your company.

Sincerely, C. J. N.



ALAMO No. 1 KITCHEN

ALADDIN Has Always Adhered to These Principles

To fulfill every promise; to mix integrity with every article you sell; to be courteous and kind; to be fair always to all men; to build up with hope for better things as your guiding star; to keep faith with others, as well as yourself; to try to do the thing better than it has been done; to hate sham, shoddy and bombast; of such is the kingdom of successful business.

ALADDIN HOUSES

Sold By The
GOLDEN RULE

For

FORTY-SIX YEARS

The letter at the right will fully explain our business reputation and our ability to fulfill our obligations. We refer you to Dun & Bradstreet's or your own local bank for further reference as to our financial responsibility.

ALADDIN'S
MATCHLESS GUARANTEE

What Induces Us to Supply Such Matchless Quality?

Aladdin believes the modest home merits the same goodness as the mansion. We have nailed Aladdin quality on the highest attainable pinnacle and have kept it there. While these are excellent reasons for the careful, thinking home buyer, the real undebatable reason is summed up in the goodness, soundness and the thoroughness of the quality of Aladdin Houses. Aladdin's Guarantee: Satisfaction or your money back.

PEOPLES NATIONAL BANK

www.blackwell-synergy.com

Bay City, Michigan

© 2000 Blackwell Science Ltd

January 2, 1952

To Prospective Aladdin Customers:

The Aladdin Company has been a valued customer of this bank and its predecessors, The National Bank of Bay City and Peoples Commercial and Savings Bank, for over forty-six years. The Company's sound business principles, integrity and fair dealings have never, to our knowledge, been questioned by its business associates or its many thousands of customers.

It has earned the complete confidence of the public.

Very truly yours,

Edward W. Brown
Executive Vice President
& Cashier

ALADDIN GUARANTEES SAFE ARRIVAL OF YOUR MATERIALS
WE SHIP YOUR HOME COMPLETE



These pictures show exactly how carefully and systematically your materials are packed for shipment. We guarantee enough materials to complete the home according to the drawings and specifications and also their safe arrival to nearest railroad station.





PLEASANT AND LIVABLE INTERIORS

Customers Who Built Their ALADDINS Themselves

Gentlemen: Saxonville, Mass.

This last summer I had many people visit me and inquire about the house and The Aladdin Company. They all thought that the house was beautiful inside and out. They could not believe that the house cost half as much as those that were not Aladdin houses. They were well pleased with the type of construction and especially the finish material which was free of knots.

My wife and I are most happy with our new home. We both have nothing but praise for The Aladdin Company for all the work and help they gave us. As for the erecting of the house, like I told all those who visited me, anyone can do it.

I want to say that you people were wonderful in giving all the aid that I needed during the building of the house. The material was very good to work with and there was plenty of stock. We wish to thank you a million times for all you have done for us in helping us get a new home.

Very truly yours,
R. C. F.

Johnstown, Pa.

Dear Sir:

First hope this finds you all in good health; we're both fine also. Our home is complete now, just to landscape the ground and to plant some trees and so on. We had a lot of nice comments about the home and they can't believe how fast it went up. We did all the carpenter work ourselves. I even laid the 12-inch blocks for the foundation. The only other help we had was my wife's brother. He is 15 years old and came up every day. We worked about 70 days in all on it. In fact, a contractor was putting up a home one lot away from us, started the same week, and we were finished two months before them, and they have wood siding and we have brick.

J. C.

New Glarus, Wisconsin.

I am very much pleased with my new home. Many of our neighbors came to see the house when it was under construction. The vast majority commented on the fine lumber and the floor plan appealed to all of them. I can truthfully state that we had no construction problem at any time and it was a pleasure to build a well planned Aladdin home, the Coronado.

If you have any prospective customers in our neighborhood, you may invite them to come to see our Aladdin home. My wife or I will be happy to show them through.

Very respectfully,
H. B.

Factoryville, Pa.

This particular home, the Aladdin Atlanta, we have just completed is very nice and satisfactory. My father and I have had no experience in building homes. I have recommended your homes to many of our friends and relatives. My father and I have done the entire job ourselves.

W. E. C.

Chittenango, N.Y.

Was amazed at how easy and how much fun it was to put up our Aladdin Newport. Had never done any such carpenter work before. Did all the work except for heating and wiring myself with the help of friends.

R. T. W.

Dear Sirs:

Mansfield, Ohio

With the assistance of a very fine neighbor I have done just about all the work, including the plumbing and the electrical work. We are very proud of our house, and have had many compliments on it.

It has been a pleasure to deal with the Aladdin Company and would advise any prospective builder to consider Aladdin before making a definite choice.

Yours truly,
M. L. F.



LIVING ROOM

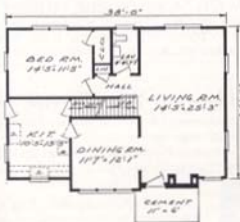


THE SHELBURNE—Fascinating in Detail—

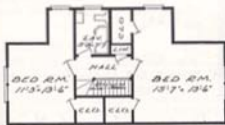
Price Given
On Enclosed
Price List

WE PAY THE
FREIGHT

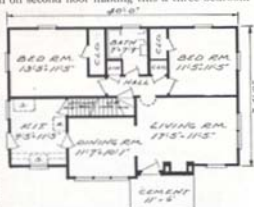
The Shelburne was first erected in Bay City and opened to the public by Aladdin as a Model Home. Public approval was instant and unanimous and confirmed the good judgment of our designers. It is modeled along ultra modern lines, strong colors and contrast in the chimney, enlivening the picture from the approach. An intriguing front door, with circle top and embellished with large antique hammered hinges adding distinction to the entrance. The No. 1 Plan is priced with two large bedrooms and bath on second floor making this a three-bedroom home. In Plan No. 2 you will note that an enclosed stair leads to second floor from hall. We have priced the Plan No. 2 including enclosed stairway to second floor and a sub-floor making a large attic storeroom. We will be glad to quote a price on the upstairs furnished as shown in the second floor plan, or the upstairs can be finished off at any time in the future when it is convenient for you to do so. This gives you a chance to convert a two-bedroom home into a four-bedroom home when conditions require additional rooms. Write for specifications in detail.



SHELBURNE No. 1—FIRST FLOOR PLAN



SHELBURNE No. 1—SECOND FLOOR PLAN

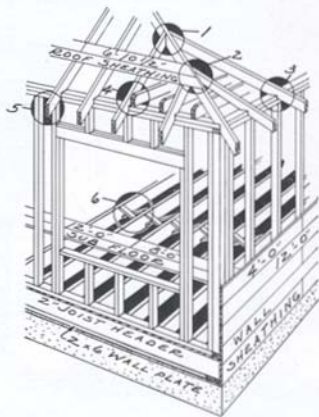


SHELBURNE No. 2—FIRST FLOOR PLAN



SHELBURNE No. 2—SECOND FLOOR PLAN

SHOWING SAVINGS IN LABOR BY THE READI-CUT SYSTEM



The picture at the left shows how the lumber in your Aladdin house will be cut to fit in our mill and ready to nail in place when you receive it. Figure 1 shows jack rafters with the mitre and bevel at upper end. Figure 2 shows mitre on end of roof sheathing. Figure 3 shows "heel" cut on rafters. Figure 4 shows mitre cut on end of ceiling joists. Figure 5 shows mitre on end of rafters. Figure 6 shows mitre on joists bridging. Wall plates, joists header, floor joists, wall sheathing, wall and partition studding and sub-floor materials are also accurately cut to proper sizes and lengths, each piece also marked for length and location. An Aladdin Read-Cut house is identical in DESIGN, CONSTRUCTION AND MATERIALS to the best architect planned and contractor built home. The Aladdin Company's forty-six years of sound business principles, integrity and fair dealing is your safeguard.

LUMBER MUST BE DRY

No house is well built unless all lumber is dry. Dry lumber is best because: It is pre-shrunk—prevents shrinking later; superior in nail-holding qualities; more resistant to decay; stronger and stiffer. Aladdin gets "The Pick of the TREES."

All Aladdin lumber is thoroughly dry before being shipped to you. We guarantee complete satisfaction or your money back.

ALADDIN HOUSES ARE NOT "PREFABRICATED"

PAY YOURSELF THOSE HIGH WAGES

Every hour you can put in on the construction of your Aladdin home means a saving to you of from \$2.00 to \$3.00 per hour on its cost. That means a SAVING of from \$15.00 to \$18.00 for every day you work on it! **** Depending on the size of the house, the carpenter work sums up to from three hundred hours to twelve hundred hours. WITH MOST OF THE SKILLED LABOR ALREADY PERFORMED, when you receive your Aladdin Read-Cut, what an opportunity you have to bring down the cost of your new home to practically a pre-war level. Our drawings and instructions cover everything from the foundation up, so you can save any part, or even all labor costs.

Bristol Under Construction

Below we show the Bristol under construction. We illustrate the first steps in framing the house, the studding for the outside walls and partitions having been nailed up. This picture shows the exact construction details of every Aladdin house.



Aladdin's 46 Years Service

The Aladdin Company initiated the Modular Principle of house design 46 years ago.

Initiated the Factory Pre-cut System 46 years ago.

Initiated the "Packaged" Sales Plan 46 years ago (one price for the complete house).

Initiated the Merchandising Plan of Direct Sales by the manufacturer to the home builder 46 years ago.

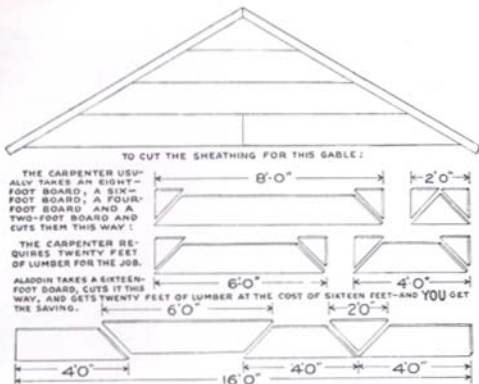
Initiated the Plan of Supplying only the very highest grades of lumber and all other building materials 46 years ago.

Initiated the Practice of Unconditional Guarantees of complete satisfaction to ALL Aladdin Home Builders 46 years ago.

Aladdin has practiced the Golden Rule in Business for 46 Years

HOW THE ALADDIN READI-CUT SYSTEM SAVES YOU MONEY BY GETTING 20 FT. OF LUMBER FROM A 16 FT. BOARD

An Aladdin Read-cut Home saves you from twenty to thirty percent in your labor bill because the carpenter does not have to spend his time working out the construction details, and cut all the lumber by hand. Our complete drawings give him construction details that have been proven the best over a period of forty-six years.



REMEMBER THE LUMBER THAT'S WASTED COSTS JUST AS MUCH AS THE LUMBER THAT'S USED. ALADDIN SAVES 18% LUMBER WASTE.

Efficient Planning Saves Your Money

Aladdin proves to you that the Read-cut System will save you about \$30 out of each \$100 on your lumber costs. The above drawing will give you a very clear understanding of the amazing economies of the Aladdin Read-cut System and what it means to you in dollar saving.

ALADDIN System Gives Control Over Your Costs

Why shouldn't you save these profits, like thousands of other home-builders have been doing through The Aladdin Company for the past forty-six years?

You KNOW there will be no shortage of materials—nothing forgotten. You KNOW you will not be paying for more materials than will be used and that you will save the price of all "short ends" that are wasted by the old system.

You KNOW you will receive high grade lumber, millwork, hardware—Aladdin CERTIFIED materials. You KNOW everything will be on hand when you want it—all in one shipment and all guaranteed by Aladdin. And you KNOW in advance what your house will look like and what it will be in every way.

KNOWING gives you control—mastery of your money, of materials, of labor and of RESULTS.

Quick Shipment

We can ship any regular home in this catalog within ten days to two weeks after we receive your order. The average time required for delivery after leaving the factory is from three to five days. We prefer to be given a little more time if convenient to you. All homes are shipped complete at one time in a sealed box car from our mill. Before you start your foundation send a deposit of \$2.00 for a plan and instructions for laying out your foundation.

ALADDIN Service

You receive a scientifically designed home; a scientifically manufactured home; the benefit of buying power, thousands of times greater than your own. You receive the safeguards of our experience. You are guarded against costly extras. You have our help in keeping costs down. You save many days' time. You save costly waste. You receive everything complete for your home in one shipment. You know exactly what your house will look like when completed. You save all architectural fees. You are assured prompt shipment and quick erection. You receive a bona-fide guarantee of complete satisfaction.

ALADDIN'S GUARANTEE

The built-in goodness, genuine quality of all materials and the beauty of any Aladdin Home will be a great satisfaction to every owner. Remember Aladdin's guarantee of satisfaction or your money back is your protection in building the Aladdin way. "Sold by the Golden Rule" has been tested by thousands of home builders to their lifetime gratification.

ALADDIN KITCHENS

Here is a thrilling, colorful suggestion for a typical Aladdin kitchen. Light and airy, our kitchens are arranged for step saving efficiency and planned for beauty and living. Home-Makers will find a joy to the heart and feet. The cabinet is beautifully precision made from the best quality hardwood, modern composition wood, fine chrome hardware and fine wear-resistant enamel. Further illustrations will be found on page 54. The cabinet is finished inside and outside in this velvety enamel and is available only in pre-finished white enamel. You will receive the cabinet in strong cartons, ready for installation. We do not include sink, plumbing fixtures, linoleum counter cover or metal mouldings for same. Write for price for the Aladdin Home you are interested in. You will find our price a third less than you can possibly purchase the same quality elsewhere. If Knotty Pine walls are desired for your kitchen, write for price on this material. We can quote it only for kitchen walls.



SOLD BY THE GOLDEN RULE

An original copy of every Customer's letter reproduced in this book reposes in Aladdin Office Files. The full name and address of any or all of them will be furnished on request. Because the Golden



Rule governs every transaction with each and every customer, you are assured of complete satisfaction with our values, our materials and our service. We know of not one Customer in our forty-six years in business who is not a friend of Aladdin.

COLOR GIVES CHARM

Bring your kitchen and bath room to life with the sparkle of bright colors. There is no added cost in choosing and applying your individual favorite colors for walls, floors and curtains. Inspiration can be had by studying illustrations of these rooms as shown in today's magazines.



PILGRIM LIVING ROOM

WHAT ALADDIN'S GUARANTEE MEANS

We started in business 46 years ago with the idea of providing low cost homes manufactured in our own mills from the finest obtainable materials. We have never deviated from this policy. The reputation we have built up for outstanding quality is our most precious asset. We intend at all times to maintain that reputation—to observe strictly the high standards home builders expect from us. That is why we can give the purchaser of an Aladdin house the most foolproof guarantee we know of. No one can offer you greater protection than we do when we say: Satisfaction or Your Money Back.

COMPLETE SATISFACTION GUARANTEED

Rock Ridge, Maryland

Gentlemen:

While building the house, many people were interested in it because it was ready cut and since we moved several prospects that have your catalog now are asking if they may see through our home before deciding. Believe us, we are proud to show it as well as we are happy to tell them how wonderful and reliable a firm you are to deal with. We really feel indebted to you for our cozy home at such a low cost.

D.P.S.



ROSEWOOD LIVING ROOM



A LOVELY KITCHEN

The fascinating treatment of the dining corner arrangement shown at right is possible in a great many Aladdin floor plans. Bright colors add greatly to the pleasure of home work.

SAVE FOUR PROFITS

on the
Lumber, Millwork, Hardware,
and Labor. You Buy
Your COMPLETE House
ALL IN ONE SHIPMENT
Direct from Aladdin Mills
Saving Middlemen's Profit



No. 8



No. 9



No. 10



No. 16



No. 17

EXTERIOR DOORS

Style No. 8 door is provided at the rear of each of our Aladdin homes. In our specifications we list the front door, giving the style number of door provided. If you wish a different style door than is specified in the specifications for your home, write us.



2 Panel

INTERIOR DOORS

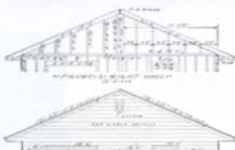
Shown at the left is our beautiful two-panel door which we provide for all interior openings where doors are shown. If you wish flush doors as shown at the right, we can provide them at an extra cost. Write us for prices.



Flush

It's Easy to Follow

ALADDIN Blueprints

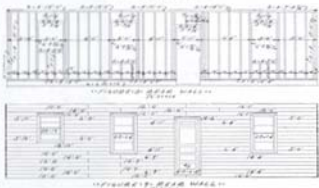


PLANS CAN BE REVERSED

Any Aladdin home can be furnished to be erected reversed. In a reversed home all rooms shown on the right-hand side in catalog floor plan arrangement will be on the left-hand side. Be sure to tell us if you plan to build your home reversed.

MASONRY and FIREPLACES

Chimneys and fireplaces are shown on our plans to suggest a practical location. We do not cut the openings in our homes for them. Our foundation plans show exactly how to proceed with the construction of your foundation. Be sure to get the foundation plan before you build your foundation. We do not furnish or quote on masonry materials, plaster, plaster bases, such as rock lath, or wall board.



BUILD YOUR OWN ALADDIN HOME

Here we have shown in greatly reduced size, a few figures taken from a set of Aladdin Ready-cut House Plans. They show the size, length and position of every piece of material entering into the construction of the home. All materials including mitered materials are marked and cut to exact length, and all you have to do is nail the materials in place.

INDEX OF SUBJECTS DESCRIBED IN THIS ALADDIN CATALOG

Aladdin Ready-cut System: Pages 2, 3, 54, 55, 58, 59, 62.

Aladdin Terms: See enclosed price list.

Attics: Finishing off second floor, page 64.

Aladdin Guaranty: See Price List—(Page 55).

Arches: Page 54.

Bearaway Designs: Pages 13, 44, 45.

Cellar Windows: Page 54.

Chimneys: Page 62.

Foundations: Page 63.

Foundation Plans: Send \$5.00. Page 54.

Freight: See order blank on price list.

Garages: Page 51.

Heating, Lighting, and Plumbing: Not included, secure locally.

Kitchen Cabinets: Page 60.

Masonry Materials: See Price List and page 62.

Materials Used: Pages 2, 3, 54, 55, 58, 59, 62.

Picture Windows: Page 54.

Quick Shipment: Page 59.

Reverse Plans: Page 63.

Ranch Houses: Pages 4, 5, 7, 8, 10, 12, 13, 15, 16, 21, 22, 24, 28, 29, 41, 53.

Reducing Labor costs: Pages 58, 59.

Summer Cottages: Page 51.

Plans with utility rooms: 8, 12, 17, 20, 25, 48.

Three Bedroom Houses: 4, 5, 6, 7, 8, 10, 13, 16, 19, 21, 25, 28, 27, 28, 29, 30, 32, 33, 36, 37, 38, 41, 43, 44, 45, 48, 52, 53, 57.

What you get: Page 2.

Waste Elimination: Page 59.

ALADDIN BUILDING ESTIMATES

EXCAVATION—Below we give the cubic yards of excavation 3' deep. One-third of that amount will be the number of cubic yards in 1' of excavation for your foundation. Multiply the number of cubic yards for 1' of excavation, by the depth you intend excavating. You will then have the number of cubic yards to remove for your foundation. Our figures are based on making the excavation 3' larger each way than the size of the foundation and does not include attached garages.

FOOTINGS—We give under "Cubic Yards of Poured Concrete" total number of cubic yards of concrete required for all main footings, column footings, porch footings, terrace floors, chimney footings and concrete steps when shown, also basement floors and doors for all attached garages.

FOUNDATIONS—Under "16" Blocks for Foundation" we give the number of concrete blocks required to construct the foundation according to our foundation plan. This includes porches and terraces where shown; also wall for garages if attached to house. All plans having a basement stairs are figured for a foundation wall 10 blocks high. All plans without basement stairs

are figured for a main foundation wall 5 blocks high. For foundation plans see page 51.

PLASTERING—Under this heading we give you the square yards of plastering surface, or if you use wall-board, the square yards of surface to be covered. The yardage includes all walls and ceiling surface. It does not include walls for any attached garages. All openings are included in figures such as doors and windows to allow for cutting and waste of your plaster base, such as rocklath, or wallboard.

CHIMNEYS—Chimneys and fireplaces are sometimes shown on our plans to suggest a practical location. Since we do not cut the openings in our homes for them, you can change the location or omit them entirely if preferred. The amount of material required for chimneys is as follows:

One 8" x 8" flue chimney, 30 bricks to each foot of height.
Two 8" x 8" flue chimneys, 30 bricks to each foot of height.
One 8" x 12" flue chimney, 35 bricks to each foot of height.
Two 8" x 12" flue chimneys, 35 bricks to each foot of height.
For mortar allow 1/2 bbl. cement and 1/2 cu. yd. sand for each 1000 bricks.

HOUSE	16" Blocks for Foundation	Cu. Yds. Poured Concrete	Cu. Yds. Excavation 3' Deep	Sq. Yds. Plaster or Wallboard Surface
Aracacia No. 1	902	15	100	353
Aracacia No. 2	518	5	35	374
Alamo No. 1	1150	19	120	483
Alamo No. 2	1080	19	120	472
Alamo No. 3	968	15	102	403
Atlanta No. 1	442	9	29	321
Atlanta No. 2	531	14	98	384
Beverly No. 1	1016	16	116	432
Beverly No. 2	1136	20	141	479
Brentwood No. 1 BV	1188	22	168	518
Brentwood No. 2 BV	1132	20	149	485
Brentwood No. 3 BV	1056	17	127	425
Brentwood No. 4 BV	1056	17	127	452
Brewster No. 1	968	16	108	436
Brewster No. 2	968	16	110	403
Bristled "A"	1034	18	124	491
Bristled "B"	1036	18	124	501
Brookton No. 3	860	14	95	380
Brookton No. 4	860	14	95	387
Carlton No. 1	306	5	20	230
Carlton No. 2	420	5	25	288
Carlton No. 3	824	13	89	337
Carlton No. 4	914	16	106	382
Colony	894	14	92	359
Coronado	914	15	110	448
Coronado No. 1	1156	21	123	473
Coronado No. 2	1122	21	118	475
Coronado No. 3	886	14	98	370
Del Mar No. 1	1016	18	101	368
Del Mar No. 2	1044	18	129	461
Del Mar No. 3	1278	25	174	605
Del Mar No. 4	1220	24	174	657
EJ Paso No. 1	1328	26	144	528
EJ Paso No. 2	1190	24	123	475
EJ Paso No. 3	1428	27	179	672
EJ Paso No. 4	1082	18	121	461
EJ Ranch No. 1	1276	25	177	632
EJ Ranch No. 2	1085	19	137	473
Glenbrook No. 1	708	18	83	456
Glenbrook No. 2	1094	22	120	443
Green Brier No. 1	972	21	119	411
Green Brier No. 2	972	21	119	466
Greystone No. 1	596	8	48	530
Greystone No. 2	990	18	117	427
Inglewood No. 1	382	5	23	227
Inglewood No. 2	427	5	28	309
Inglewood No. 3	924	16	107	425
Jasmine No. 1	902	18	94	336
Jasmine No. 2	902	18	94	364
Lexington No. 1	1244	26	134	486
Lexington No. 2	1244	26	134	497
Madison No. 1	962	15	100	411
Madison No. 2	1050	18	122	462
Madison No. 3	1094	20	130	510

HOUSE	16" Blocks for Foundation	Cu. Yds. Poured Concrete	Cu. Yds. Excavation 3' Deep	Sq. Yds. Plaster or Wallboard Surface
Magnolia	946	15	91	660
Mayfair	444	7	46	220
Newport No. 1	1050	20	122	430
Newport No. 4	804	13	81	310
Newport No. 5	468	6	27	250
Norfolk No. 1	872	14	100	393
Norfolk No. 3	484	6	35	361
Palm Springs No. 1	1766	35	181	633
Palm Springs No. 2	1414	27	136	457
Palo Alto No. 1	1186	20	98	390
Palo Alto No. 2	1186	20	118	442
Palo Alto No. 3	1078	18	123	490
Palomar No. 1	906	12	118	431
Palomar No. 2	906	14	90	348
Palomar No. 3	1170	19	160	595
Parkway No. 1	1116	21	118	429
Parkway No. 2	1028	18	100	397
Parkway No. 4	1116	21	118	434
Parkway No. 5	1176	23	133	469
Pasadena No. 1	1068	19	130	491
Pasadena No. 2	973	17	113	489
Pilgrim No. 2	1056	18	133	469
Pilgrim No. 4	906	16	110	448
Pilgrim No. 5	1056	18	133	516
Pomona No. 1	516	7	40	373
Pomona No. 2	814	13	85	329
Pomona No. 3	442	6	25	341
Redwood No. 1	384	7	31	372
Redwood No. 2	872	17	96	372
Redwood No. 3	931	17	110	411
Rio Grande No. 1	1140	28	182	666
Rio Grande No. 2	1234	24	142	478
Rio Grande No. 3	1186	21	131	421
Rockport No. 2	890	18	122	412
Rockport No. 4	1107	20	139	515
Rockport No. 5	1253	23	122	475
Rosewood No. 1	1170	22	132	470
Rosewood No. 2	1170	22	132	513
Rosewood No. 3	1125	18	114	432
Santa Barbara No. 1	1481	30	170	534
Santa Barbara No. 2	1332	27	137	474
Santa Barbara No. 3	1381	25	125	410
Santa Fe No. 1	1162	22	156	589
Santa Fe No. 2	1180	22	156	582
Shelburne No. 1	1074	19	107	712
Shelburne No. 2	1074	20	126	500
Summeret	913	14	96	638
Sunshine "B"	872	14	97	398
Sunshine "D"	814	13	85	344
Sunshine "E"	902	15	102	428
Sylvan No. 1	1049	18	120	433
Sylvan No. 2	520	9	40	414
Vineyard No. 1	1062	18	123	424
Vineyard No. 2	1062	18	120	462
Williamsburg	1044	18	120	689
Winston No. 1	990	16	115	455
Winston No. 3	990	17	117	475

THE ALADDIN COMPANY

Catalog No. 57

FOUNDED 1906

1952

BY—W. J. and O. E. SOVEREIGN

HOME OFFICE and MILLS, BAY CITY, MICHIGAN

EXPANSION ATTICS— HOMES THAT GROW

The average total first floor space of one story homes in this book approximates 800 square feet. Expansion attics as shown here add one-half again as much. Attics may be finished when building or later. The attic bed unit shown at the right will be furnished in either single or double size. One or both sides of bed can be furnished with full length closet doors instead of shelves or drawers.



PLAN No. 2

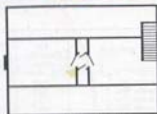
A few of our plans show a permanent stairway to second floor but no materials are included to finish off the second floor, unless the floor plan, and specifications state the second floor materials are included. In most homes valuable attic space is available for future expansion.

OUR FOLDING STAIRWAY

Where no stairway is shown in the floor plan it is always possible to install a folding stairway, usually in the ceiling of the hall. The stairway can be lowered or raised with almost finger pressure. When closed, the space is covered with a neat panel. The frame opening in the ceiling is about 26" x 54".

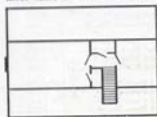


PLAN No. 1



PLAN No. 1

The three suggestions will add another 300 or 400 square feet of living space to your home. You can include in your order (if a permanent stair to the second floor is not included) a folding stairway as pictured on this page. Price will be given on request. When installing this folding stairway you are spared the present cost of finishing off the second-story rooms but are in shape to expand at a later time at minimum cost.



PLAN No. 3 BELOW

