

*"Build it Yourself"*

# ALADDIN

KNOCKED-DOWN  
HOUSES

SUMMER COTTAGES  
DWELLING HOUSES  
AUTO GARAGES  
BOAT HOUSES

No experience or mechanical skill needed to put together "Aladdin" Knocked-down Houses, and no tool but a hammer.

North American Construction Co.  
Bay City, Michigan, U. S. A.

## Put up an "Aladdin" Yourself

Don't hesitate to send for an "Aladdin" house because you fear it is difficult to put up. There is no back-breaking, muscle racking, sawing, measuring, figuring or fitting to do. We do all that in our mill. Your "work" is driving nails.



## Or hire an ordinary man to put it up

If you haven't the time or inclination to do the actual work, you can hire an ordinary man to put it up. There are no "extras." You know absolutely what your completed house will cost beforehand—plus a couple of days labor.

## “Build it Yourself” —What the Phrase Means

Over 30,000 boats were built from paper patterns last year alone, by private owners, most of whom were inexperienced, and many of whom had absolutely no skill as carpenters. They succeeded because in reality it is not a difficult thing to do—the patterns were so complete and instructions so explicit. This new movement, or idea, of “building things yourself,” has been fully vindicated—has proven an entire success.

These people who built their own boats saved a very large amount of money by so doing. In fact, that is the underlying principle of the “build it yourself” idea—that is the particular advantage of it. It saves the builder's money—proportionately speaking, much money. For example, take an “Aladdin” Summer Cottage, Style B, that we sell for \$118. Get a carpenter or builder to figure on it and you will find he will charge you not less than \$300.

So far so good. “But,” you say, “I'm no carpenter—haven't even any skill with tools.”

That's just the point! You don't need the skill. If you can hit a nail with a hammer, you can put up an “Aladdin” knocked-down house. You do not need a saw. Not even a rule or square, because you do not have to make any measurements. It is as simple as a b c. A bright boy can put an “Aladdin” house together. The instructions are so complete and explicit—the patterns and diagrams are so clear and simple that a novice finds it easy to do. Every part is numbered to correspond with the diagram. You really can't go wrong—simply nail them together at the places indicated.

The term “knocked-down” means just what it says: A house that has been sawed out, put together, then systematically knocked down and the parts gathered together to send out to purchasers to be put up again.

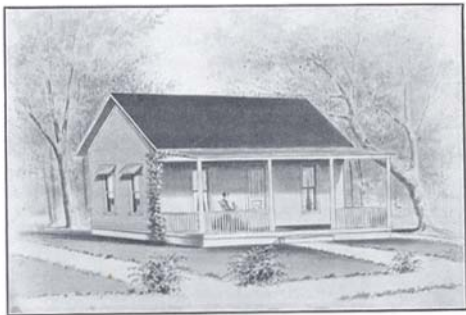
In direct contrast to the light and often flimsy *portable* houses being sold by certain concerns, “Aladdin” houses are strong and sturdy, well able to withstand the buffets of the severest storms and last for many years.

## Summer Cottage—General Description

The "ALADDIN" Knocked-down Summer Cottage is an innovation in summer cottages. It stands without an equal—in appearance, structural solidity, durability, and the ease and speed with which it may be erected. Nothing temporary about this cottage; everything is permanent. When nailed together it will last as long as any kind of wooden structure.

In the "ALADDIN" Knocked-down Summer Cottage the very best of timber is used. All timber in the frames is dressed on four sides. The studding of 2x4's are placed every 16 inches, making the walls as firm and strong as those of any dwelling. The joists upon which the floor is laid are every 16 inches apart, making the floor solid and free from vibration. The flooring used is matched and the best quality. The siding runs lengthwise of the cottage, same as on all houses. The roof is covered with a prepared roofing, making it absolutely impervious to water; the doors are all paneled and the windows have sliding sash. The floor of the porch is made of matched flooring, and the roof of the porch is supported by handsome, turned columns.

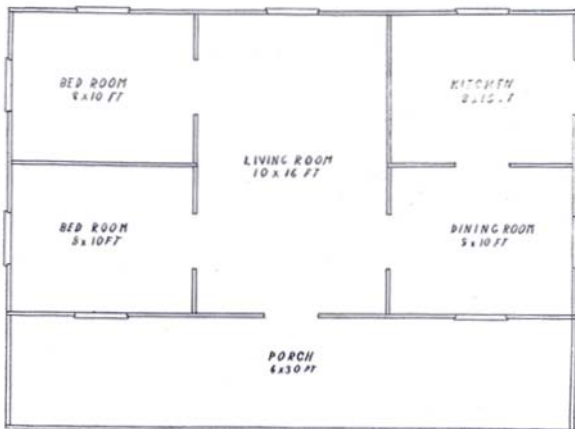
Every piece of lumber or timber used is sawed and fitted the correct length or size, the gables being sawed on the bias and each piece of studding, rafters, flooring, siding, etc., are all cut to fit, so that in the erection, all one has to do is to place the timber and boards where they belong and nail them there. With each cottage we send a full set of patterns showing where every piece goes and how to place it there; together with full instructions telling you just what to do and how to do it.



Style G Bungalow—Described on Page 3

# "Aladdin" Knocked-down Bungalow

Style G—Size 22x30 ft.



Style G Bungalow has a very large and attractive porch, being 6x30 feet. In the center of this building is a large living or lounging room; leading off this living room on the one side is a dining room and kitchen, leading from the other side are two bedrooms. This Bungalow is complete in every detail and contains all the elements of comfort. It is strong and substantially built; when erected will last as long as any wooden structure and can be erected in two days.

Price, complete, knocked-down - - - - \$357.00

Living Room 10x16 ft.  
Bedrooms 8x10 ft.  
Dining Room 8x10 ft.

Kitchen 8x10 ft.  
Porch 6x30 ft.  
Height of Walls 8 ft.

Studding and rafters 2x4 inches, Studding, rafters and joists placed every 16 inches, Flooring 1 inch matched, Siding  $\frac{1}{2}$  inch, Roof inch lumber over-laid with best prepared roofing, Paneled Doors, size 2 ft. 6 in. x 6 ft. 8 in., Windows size 26x60 inches with two sliding sash, Porch Columns turned 5 inches, Glass double strength.

## Aladdin Summer Cottages

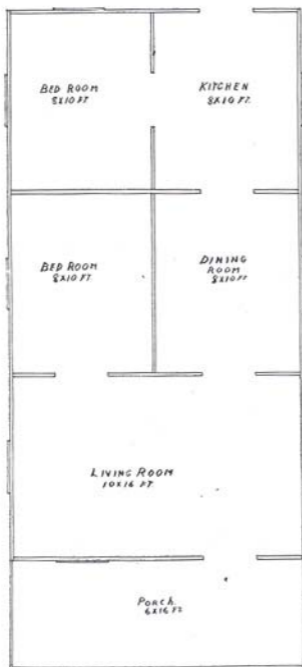


The strongest, the handsomest, the roomiest, the easiest to erect, and the most reasonable in price of all the summer cottages in the market. Style F Knocked-down Summer Cottage, \$298

Complete in every part.

**W**HEN we tell you all the above **quality** features of the "ALADDIN" we feel that they alone deserve your order, but when we add that in addition to it being the **best**, it is also the **lowest in price**, we feel that surely the "ALADDIN" is the cottage you will select. We admit that it is rather unprecedented in any line to sell the best article of its kind at a price lower than any other; but we can afford to do it, for several reasons: First, we are in the heart of the timber district, where good lumber is very cheap; second, the large capacity of our mill enables us to handle a big volume of business at a small cost; third, the construction of our houses is very simple, (made so purposely, in order that the most inexperienced amateur can have absolutely no difficulty in erecting them).

Our Style F Cottage (shown here) is a beauty in every line. A contractor or builder could not duplicate it under \$600.00; its price is from 25 to 50 per cent less than any of the so-called "portable" summer cottages now on the market, and in strength, durability, style, and ease of erection, it is considerably better.



## Knocked-Down Summer Cottage

Style F

Size 16x36 feet

Contains five rooms and porch. Living room is 10x16 feet. Off from living room is an 8x10 bed room. Also leading from the living room is the dining room 8x10 feet. Directly back of dining room is kitchen of same dimensions. Leading from kitchen is another bed room 8x10 feet. A porch with roof extends the full width of the house 6x16 feet, and has three round porch pillars. Partitions are made of matched lumber. All timbers and every stick, window, window sash, door, roof, porch, hardware, everything to complete this house is furnished and all pieces guaranteed to fit perfectly without the use of a saw. Can be erected in two days with our simple, comprehensive and perfect instructions. Price complete, knocked down, - - \$298

Living Room, 10x16 ft.  
Dining Room, 8x10 ft.  
Porch, 6x16 ft.

Bed Rooms, 8x10 ft.  
Kitchen, 8x10 ft.  
Height of walls, 8 ft.

Studding and rafters, 2x4 inches; studding, rafters and joists are placed every 16 inches; flooring 1 inch matched; siding  $\frac{1}{2}$  inch; roof 1 inch lumber over laid with best prepared roofing; paneled doors, size 2 ft. 6 inches by 6 ft. 8 inches; windows, size 26 inches by 60 inches, two sliding sash, glass double strength; porch columns turned, 5 inches.



## Knocked-down Summer Cottage

### Style D and C

Style D, size 16x26 ft., 4 rooms, complete,	- - -	\$247
Style C, size 16x26 ft., 3 rooms, complete,	- - -	\$243

We challenge any "portable" construction company in the United States to show any summer cottage of this size that is as good at double the price.

#### STYLE D

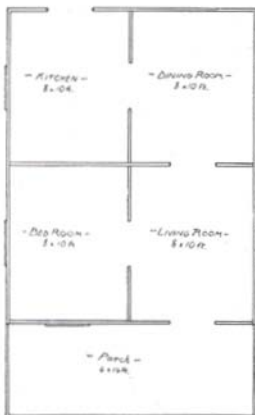
Living Room, 8x10 ft.  
 Bed Room, 8x10 ft.  
 Dining Room, 8x10 ft.  
 Kitchen, 8x10 ft.  
 Porch, 6x16 ft.  
 Height of Walls, 8 ft.

#### STYLE C

Living Room, 10x16 ft.  
 Bed Room, 8x10 ft.  
 Kitchen, 8x10 ft.  
 Porch, 6x16 ft.  
 Height of Walls, 8 ft.

Studding and rafters, 2x4 inches; studding, rafters and joists are placed every 16 inches; flooring 1 inch matched; siding  $\frac{1}{2}$  inch; roof inch lumber over laid with the best prepared roofing; paneled doors, size 2 ft. 6 inch by 6 ft. 8 inch; windows size 26x60 inches, with two sliding sash, glass double strength; porch columns turned 5 inches.





## "Aladdin" Summer Cottage

Style D—Size 16x26 feet

Contains four rooms and porch. Living room 8x10 feet. Dining room leads from living room and is 8x10 feet. Bed room leads from living room, size 8x10 feet. Kitchen leads from dining room, size 8x10 feet. Covered porch extends full width of house, size 6x16 feet. This house has been erected in 12 hours by two men from our knocked down forms.

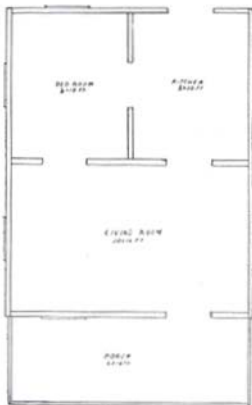
Price, complete, knocked down, \$247.

## "Aladdin" Summer Cottage

Style C—Size 16x26 feet

Same as Style D, except that it contains three rooms, living room 10x16 feet. Bed room leads from living room, size 8x10. Kitchen leads from living room, size 8x10 feet. Covered porch extends full width of house, size 6x16 feet. This house has been erected in 12 hours by two men from our knocked-down forms.

Price, complete, knocked-down, \$243.





## Knocked-down Summer Cottage and Hunting Lodge

Hunting Lodge, Style B, 10x16 ft., without porch,	\$ 98
Summer Cottage, Style B, 10x22 ft., with porch,	\$118
Summer Cottage, Style B, 10x22 ft., with partition, making 2 rooms,	\$126



Size of room, 10x16 ft., or two 8x10 rooms.

Porch, 6x10 ft.

Height of walls, 8 ft.

Studding and rafters 2x4 inches.

Studding, rafters and joists are placed every 16 inches.

Flooring 1 inch matched.

Siding  $\frac{3}{4}$  inch.

Roof inch lumber, over laid with best prepared roofing.

Paneled doors, size 2 ft. 6 inch by 6 ft. 8 inch.

Windows 26x60 inches, with two sliding sash.

Porch columns turned 4 inches.

Glass double strength.

Price includes everything complete.

## Knocked-down Dwelling House

This house, when erected, is exactly the same as any house of same size and style erected by a contractor. The difference between our method of construction and the old method of construction employed in building and erecting a house is that we do all the work by automatic machinery, instead of by the slow and costly process of hand labor, by which method houses are usually built. The result in the finished house is in both cases the same, but the result as to cost is radically different. Our method of construction enables you to purchase and erect this house at a very great saving in cost, a saving in fact of many hundred dollars less than you could get a contractor to build and erect a house of like size, style and quality. We do all the cutting and fitting of this house with a perfect exactness—an exactness obtainable only by the use of the most modern and improved machinery—leaving for you only the driving of the nails in its erection, a quick, inexpensive and easy thing to do.

Many a workmen or man of moderate means would like to own his home who has not the money (from \$1,200 to \$1,500) to buy a cottage already built. To *all* of such, the Aladdin Knocked-down Dwelling House is just the thing, because they can either build it themselves at simply the cost of their own time plus \$492 for material, or can have it nailed together under their own supervision by unskilled labor. Either course will save them several hundred dollars. We *guarantee* the Aladdin Knocked-down Dwelling House to be absolutely weather-proof, warm, strong, durable, and modern in design—as much so as any house put up by a contractor or builder, and *will last just as long*.

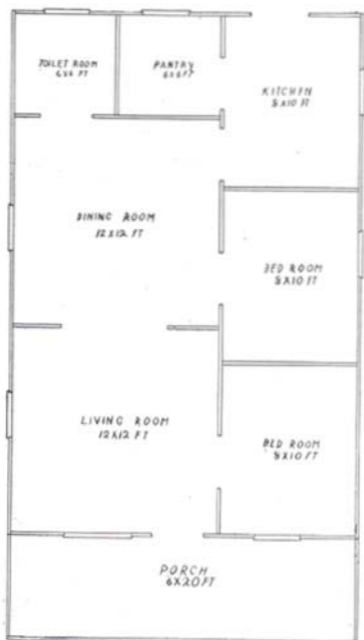
We invite mining companies, manufacturers, etc., to get our quotation, in quantities, for houses for their workmen. They can be erected in a few days.



## Knocked-down Dwelling House

Six Rooms. Price, complete, \$592

This house is built after modern and improved methods of construction. It is as good a building in every sense of the word for its size as money can buy, and when erected is worth \$1,200. It has a large porch across the front of the house. The inside has a large living room, and adjoining it is a dining room connected by a handsome arch. Off the living room is one bed room, and off the dining room is one bed room. Leading from the dining room is a kitchen, and leading from the kitchen is a pantry; a toilet room also leads from the dining room. Patent plaster board is used and is a non-conductor of heat and cold and also of sound. When placed on the walls there is between it and the outside siding what is known as a dead air space. This dead air space is used in the construction of all large buildings, and prevents the penetration of changing temperatures and of sound. Parties not desiring to erect this house themselves could have it erected by hired labor at a very small cost.



## Knocked-down Dwelling House

Price, complete,  
\$492

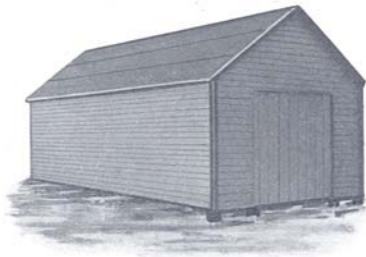
### SIZE OF ROOMS:

Living Room  
12x12 ft.  
Dining Room  
12x12 ft.  
Bedrooms 8x10 ft.  
Kitchen 8x10 ft.  
Toilet Room 6x6 ft.  
Pantry 6x6 ft.  
Porch 6x20 ft.  
Height of Walls 10ft.  
Height of Ceilings  
9 ft. 9 in.  
Height from Sill to  
Peak of Gable 17  
ft. 6 in.

Sills 6x8 inches; joists 2x6 inches; studding and rafters 2x4 inches; joists, studding and rafters placed every 16 inches; flooring 1 inch matched; siding  $\frac{1}{2}$  inch; roof inch lumber overlaid with best prepared roofing; patent plaster board (to be nailed on studding, no lath or plaster required; windows size 26x60 inches with two sliding sash; glass double strength; porch columns turned 5 inches; front and rear steps.

## Aladdin Knocked-Down Boat Houses

We are the originators of the knocked-down house plan and have many different kinds, which were successfully built by amateurs last year—an evidence of the practical value of our system.

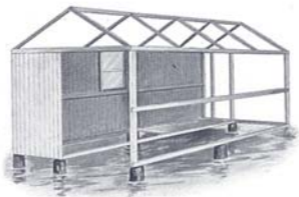


No. 3 "ALADDIN" Boat House—Size 20x8 ft. Designed for skiffs and small launches.

In the "ALADDIN" knocked-down boat house the timber used for the frame is dressed on four sides, giving it a good appearance and making it easy to handle. This timber is cut in correct lengths requiring only to be held in position and spiked to complete the frame. The siding on this house is tongued and grooved so that each piece sets into the next, giving the house exceptional strength, and when put on in this manner cannot warp out of shape from dampness as is bound to be the case with other kinds of siding. All the siding for this house is cut the correct length, needing only to be held in position and nailed to the frame. The roof is made from dressed tongued and grooved lumber each piece being securely driven into that of the next then nailed making the roof impervious to water. The doors are made by putting together specially cut pieces for that purpose and screwing on the hinges. With this knock-down boat house complete patterns for putting the house together are sent and full instructions telling exactly where each piece goes. This house can easily be nailed together in one day.

Price, knocked-down, including all hardware, etc., - - \$59.00

We have been in the saw mill and construction business for seventeen years. Theory is good—experiment is better—but *experience* is best.



No. 5 "ALADDIN" Boat House—Size 26x8 ft. Complete in all features as described under head of No. 3 Boat House.

Size 8x26 ft., height of walls 7 ft., size of well 6x26 ft., size of front doors 6x7 ft., size of rear door 3x7 feet, inside platform 2 inch plank, frame of 2x4's, siding tongued and grooved 1 inch lumber, roof tongued and grooved tightly matched lumber.

Price, knocked-down, including all hardware, etc., - - \$74.00

No. 7 "ALADDIN" Boat House—Size 36x10 ft. Complete in all details as described under head of No. 3 Boat House.

Size 10x36 ft., height of walls 7 ft., size of well 8x36 ft., size of front doors 8x7 feet, size of rear door 4x7 ft., inside platform 2 inch plank, frame of 2x4's, siding tongued and grooved 1 inch lumber, roof tongued and grooved tightly matched lumber.

Price, knocked-down, including all hardware, etc. - - \$98.00

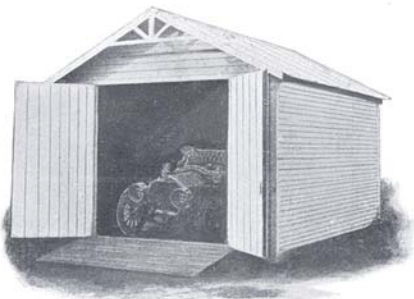
No. 9 "ALADDIN" Boat House—size 46x12 ft. Same specifications as above.

Size 12x46 ft., height of walls 8 ft., size of well 10x46 ft., size of front doors 10x8 ft., size of rear door 4x8 ft., inside platform 2 inch plank, siding tongued and grooved 1 inch lumber, roof tongued and grooved tightly matched lumber.

Price, knocked-down, including all hardware, etc., - - \$169.00

We guarantee absolutely that every piece of lumber is of good quality, dressed and will fit perfectly.

We are located in the heart of the timber lands of Michigan—that's why you find our prices so low, so much lower than others.



No. 2 "ALADDIN" Automobile Garage—Size 12x20 ft. Designed for all sizes of touring cars. This is a roomy, light and airy house, with ample room for tools, accessories, etc. Our garages are much larger than anything in their class on the market AND much cheaper.

Large double doors; window sash and frame of best quality lumber, dressed thoroughly and seasoned. Every board and piece is cut to exact size and guaranteed to fit. Simple and complete instructions and diagrams for erecting. Price includes all hardware, nails, hinges, locks, and window sashes. Roofing of perfect matched lumber, absolutely impervious to water.

Price, complete, knocked-down - - - - - \$147.00

No. 1 "ALADDIN" Automobile Garage—Size 10x16 feet. Designed for all sizes of runabouts—same as No. 2 but without window.

Size 10x16 ft., Height of Walls 8 ft.

Studding and rafters 2x4 inches, two sills run lengthwise and two across garage, joists, studding and rafters placed every 16 inches, flooring 1 inch matched, siding  $\frac{1}{2}$  inch, roof of tongued and grooved matched lumber, size of large door 8x8 ft., bridge 2 inch plank.

Price, complete, knocked-down - - - - - \$89.00



A positive and definite guaranty is behind every sale we make,  
a guaranty backed by our large factory.

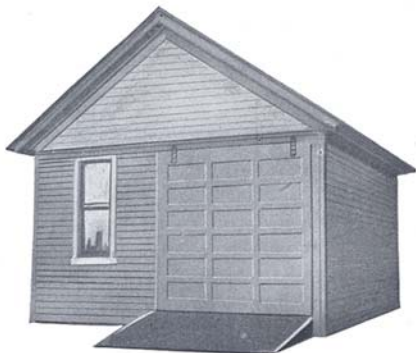


## Aladdin Knocked-down Automobile Garages

No. 3 "ALADDIN" Automobile Garage—Size 16x20 feet. Designed for two touring cars, with ample room for tools, accessories, etc. This house is particularly attractive, and at the price we quote cannot be met in design, finish, stability, etc.

Large double paneled door; window sash and frame of best quality lumber, dressed thoroughly and seasoned. Every board and piece is cut to exact size and guaranteed to fit. Simple and complete instructions and diagrams for erecting. Price includes all hardware, nails, hinges, locks and window sashes. Roofing of best grade prepared, absolutely impervious to water.

Price, complete, knocked-down,        -        -        -        -        \$200.00



## Aladdin Knock-down Automobile Garages

### Aladdin Garage, No. 4

Price, complete knocked-down - - - - - \$240.00

Size 20x20 ft. Hight of walls 9 ft.

Studding and rafters 2x4 inches; joists 2x6 inches; three sills run lengthwise and two across garage; joists studding and rafters placed every 16 inches; flooring 1 inch matched, siding  $\frac{3}{4}$  inch; roof inch lumber over laid with best prepared roofing; size of large door 8x9 feet; paneled door in rear size 2 ft. 6 in. by 6 ft. 8 in.; windows size 26x60 inches, with two sliding sash. bridge 2 inch plank.

### Aladdin Garage No. 5

Price, complete, knocked-down, - - - - - \$275.00

Size 16x30 ft. Hight of walls 9 ft.

Studding and rafters 2x4 inches; joists, 2x6 inches; three sills run lengthwise and two across garage; joists, studding and rafters placed every 16 inches; flooring 1 inch matched; siding  $\frac{3}{4}$  inch; roof inch lumber, over laid with best prepared roofing; size of large door 8x9 feet; paneled door in rear, size 2 ft. 6 in. by 6 ft. 8 in.; windows size 26x60 inches, with two sliding sash; bridge 2 inch plank.

## Patterns

If you desire patterns only for knocked-down houses, we will send full and complete patterns and detailed drawings, drawn to scale for the following prices: Patterns for cottages, \$10.00. Patterns for boat houses and garages, \$5.00. Full instructions accompany these, making it easy to build from them.

---

## Terms

50 per cent. cash with order and balance C. O. D. Draft attached to bill of lading. All prices subject to advance in price of lumber.

[Discount of 5 per cent. allowed for full amount of cash with order.]

