

"Manufacturers Create Value---Middlemen Add Cost"



DIRECT FROM THE FOREST
TO THE HOME

THE original and only
perfect system for the
construction of knocked
down houses. :: :: ::

Manufactured Exclusively by the
North American Construction Company
BAY CITY, MICHIGAN, U. S. A.

WE SEND YOU A COMPLETE HOUSE, READY
TO BE NAILED TOGETHER AND LIVE IN
FOR LESS THAN YOU CAN BUY THE ROUGH
LUMBER FOR. ∴ ∴ ∴ ∴

An Aladdin House at a Glance—What You Get.

Foundation timbers.

Joists, studding and rafters.

Siding.

Flooring.

Roof sheathing.

Porch timbers, joists, flooring, columns, railing and posts, moulding, roof sheathing
and roofing.

Ruberoid roofing (shingles if preferred).

Steps for front and back.

Doors for all openings, with frame and trim inside and out.

Windows and frame, sash, with glass in place, and trim inside and out.

Moulded base board for inside rooms.

Weather moulding for trimming all outside doors and windows.

All hardware.

Mortice locks, knobs and hinges.

Nails of proper size for entire house.

Paint for two coats outside and inside (any color).

Plaster board for lining entire house.

Instructions for doing all the work.

ALADDIN HOUSES

"Built in a Day"

Catalog No. 18

Fall 1909

North American
Construction Company

Bay City,
Michigan,
U. S. A.



Eighteen
Years
in the
Lumber
Business

THE ALADDIN PLAN: Save all cost which adds no value, by selling *"direct from the forest to the home."*

☐ Ordinarily the home builder pays from two to four times the actual cost of production for every piece of material that goes into his house. The reason for the high cost is, that the goods pass through so many hands. The lumber starting with the lumberman, who cuts the timber, to the mill owner, from the mill owner to the big wholesaler, from the wholesaler to the planing mill, from the planing mill to the local lumber yard. Each middle man adds his expenses, his losses, his profits. All these are piled up in the retail price and must be paid for by YOU.

☐ Aladdin houses are the only knocked-down houses manufactured today.

☐ The North American Construction Company originated the knock-down system of house construction.

☐ Aladdin houses are designed so that mill-run lengths are used almost throughout. Using mill-run lengths makes unnecessary the cutting to waste of good lumber. We reduce waste in everything down to less than two per cent. That's one reason why we can furnish No. 1 Huron Pine in every house at such low figures.

☞ Skilled labor is absolutely unnecessary in any part of the erection and completing of an Aladdin house—Because we supply the skilled labor in our mill, preparing the entire house for you to fit together in a few days.

☞ An Aladdin house is exactly like any well constructed house when it is erected. It cannot be taken apart except as you would tear apart any good house.

☞ A saw is not needed in any part of the erection of one of our houses. We do all the measuring, sawing and fitting in our mill, by automatic machinery and the best skilled labor.

☞ Our mill is situated right in the heart of the great timber lands of Michigan.

☞ When erected an Aladdin house will last for several generations.

"DIRECT FROM THE FOREST TO THE HOME."

☞ Stop and think what that means—"direct from the forest to the home"—It means that you are buying your house at the same price it costs us here—right where the timber grows—to build a house. It means that your house costs you no more than if you could go direct to a mill at the edge of the forest and buy the timber and lumber. It means that you are really doing that very thing, buying it from the mill at the edge of the forest. It means that you are not paying a profit to the big jobber, a profit to the big wholesaler and a profit to the local lumber dealer at your home, and on top of all that the freight for shipping the lumber to the several places where each does business. The house is shipped to you "direct from the forest to the home." Another thing—each of the above lumber dealers sells on credit. They all add from five per cent. to ten per cent. to make up for bad accounts—losses. We sell for cash only—we have no bad accounts and are therefore not obliged to take from the man who pays to make up for the man who doesn't pay.

WHAT YOU GET WHEN YOU BUY AN ALADDIN HOUSE.

☞ Each price of each house in this catalog pays for the complete house.

☞ A complete house means all lumber cut to fit accurately for the foundation timbers, the joists, studding and rafters, the siding, the flooring; the porch timbers, joists, flooring, columns, railing, steps; the roofing, roof sheathing; doors, half glass for outside and paneled for all inside openings, windows, with glass in place; window sash, inside and outside window trim and inside and outside door trim, moulded base board for all inside rooms, weather moulding for trimming all outside doors and windows, all hardware, mortised locks for all inside doors; handsome burnished art brass locks and hinges for outside doors; nails for entire house, paint for two coats inside and outside and plaster board for lining entire house inside.

THE LUMBER WE USE.

☞ Every piece of lumber in every Aladdin house has been carefully selected from the highest grade of Huron Pine. It is carefully inspected by experienced men and if not up to a high standard is not used. This is an extremely important point and you should consider it carefully. Our facilities for buying high grades are unequaled by any manufacturer of lumber in the country. This means much to the purchaser—to know the quality of materials used—to know that the lumber and timber are the best; that it is well seasoned; sound and of first quality throughout. And nowhere in the world is there better pine to be found than in the great timber state of Michigan.

ALADDIN PLASTER BOARD.

☞ Aladdin plaster board is the greatest single achievement in the builders' craft in the last generation.

☞ Aladdin plaster board makes a perfect wall; it is easily and quickly put on; its remarkable construction gives absolute protection against extremes in weather; it is positively fire-proof; it deadens sound.

☐ In actual, carefully conducted, comparative tests a house lined with Aladdin plaster board required 18 per cent. less coal to keep it at a temperature of 70 degrees than a house of identical size and construction, but which had the usual lath and plaster inside walls.

☐ The above test gave definite proof of the superiority of Aladdin plaster board over lath and plaster.

☐ Aladdin plaster board is composed of four layers of wool felt and three thicknesses of the very best close grain plaster. It is manufactured under enormous pressure and the result is a perfect board, stiff, strong and smooth.

☐ It will not crack with age, nor loosen from dampness, as will the ordinary plaster.

☐ It comes in sheets 32 x 36 inches in size and is nailed directly to the studding. The plaster alone in Aladdin plaster board is equal in warmth to ordinary plaster, while the four layers of wool felt are more than equal in protection to inch lumber sheathing and building paper combined.

☐ You paper directly onto the plaster board.

THE WARMTH OF ALADDIN HOUSES.

☐ We have ample proof of our unqualified statement that Aladdin houses are warmer than any house outside of solid masonry. We have letters from many owners of Aladdin houses in the northernmost sections of the United States stating that their houses are **WARMER** than any wooden house they ever lived in.

THE ADVANTAGES TO YOU IN BUYING AN ALADDIN HOUSE.

☐ You know exactly what your complete house will cost; there are no extras. Everything is included in the price stated in this catalog.

☐ You know exactly what your completed house will look like. We show you photographs of your house, inside and outside, floor plans, furnish complete specifications.

☐ You save several months' time for we usually ship your house the same day your order is received.

☐ You can do all the work yourself, easily, for we furnish such complete instructions and illustrations that you will need no assistance from skilled labor in any part of the work.

☐ Or you can hire an ordinary unskilled man to do the work by the day. No high priced labor required.

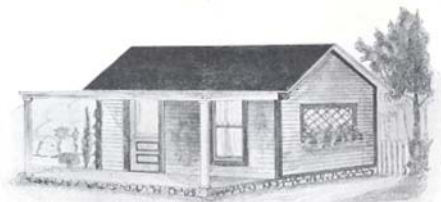
☐ You get the best grade of material throughout the entire house—at a less price for the completed house than you can buy the rough lumber for alone.



Interior Style J.

Read Pages One, Two and Three.

Aladdin Two-Room Dwelling House, Style A, \$180



STYLE A—TWO ROOMS.

Style A is a cosy attractive little house of two rooms, with big porch running full length of house. It is built just like our most expensive house, only smaller. Its construction throughout is identical to our larger sizes. It has glass in front door, diamond paned window in end and handsome turned columns on porch.

SPECIFICATIONS—STYLE A.

Size 16x16 ft.—Price \$180.

Height of ceilings, 8 ft. 2 in.

All ceilings square, not hipped.

All lumber selected Huron Pine.

2 sills run lengthwise and two across the ends.

Joists, 2x6 in.

Studding and rafters, 2x4 in.

Joists, studding and rafters placed every 16 in.

Flooring, 1-inch matched, 3 inch-1/2 wide.

Siding 1/2 inch.

Roof, 1-inch lumber overlaid with best prepared roofing.

Patent plaster board, (to be nailed on studding) no lath or plaster required.

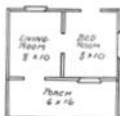
Windows, size 26x60 in., two sliding sash glass double strength.

Doors, 2 ft. 8x6 ft. 8, front door upper half glass.

Porch columns, 5 inches.

Base boards and all interior trim and finish.

Hardware, locks, hinges, knobs, nails, paint for two coats inside and out.



Floor Plan Style A.
Size 16x16—Price \$180.

ALADDIN TWO-ROOM DWELLING HOUSE—STYLE B—Price \$156.



STYLE B—TWO ROOMS.

Style B is identical to Style A in size and construction except that porch runs short way of house and the slight changes in windows noted on floor plan. It is a big seller. Price \$156.



B size 10x22
Price \$156.

Aladdin Four-Room Dwelling House, Style D, \$296



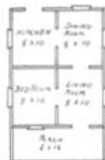
STYLE D—FOUR ROOMS AND STYLE C—THREE ROOMS.

Many a man of moderate means would like to own his own little home, but has not got the money, from \$500 to \$800 to buy a cottage already built or to have it built by carpenters for him. To all such, the "Aladdin" knock-down house is just the thing, because it can be built by themselves at simply a cost of their own time, plus our price for all the material, or can have it nailed together under their own supervision by unskilled labor. Either course will save several hundred dollars. We guarantee all "Aladdin" houses to be absolutely weather-proof, warm, strong, durable and modern in design—as much so as any house built by usual methods and will last just as long.

Style D is a cosy little four-room house, exactly like any other house in this catalog except in size.

SPECIFICATIONS—STYLE D.

Size 16x26 ft.—Price \$296.



Floor Plan Style D
Size 16x26.

Height of ceilings, 8 ft. 2 in.

All ceilings square, not hipped.

All lumber selected Huron Pine.

3 sills run lengthwise, one on each side and one through the center, and two sills at the ends.

Joists, 2x6 in.

Studding and rafters, 2x4 in.

Joists, studding and rafters placed every 16 in.

Flooring, 1-inch matched, 3 inches wide.

Roof, 1-inch lumber overlaid with best prepared roofing.

Patent plaster board, (to be nailed on studding) no lath or plaster required.

Siding $\frac{7}{8}$ inch. Windows, size 26x60 in., two sliding sash, glass double strength.

Doors, 2 ft. 8x6 ft. 8, front door upper half glass. Porch columns, 5 inches, and railings.

Base boards and all interior trim and finish.

Hardware, locks, hinges, knobs, nails, paint for two coats inside and out.

STYLE C DWELLING HOUSE, THREE ROOMS.

Same as Style D except it has large 10 x 16 room in front.

Size 16x26 ft.—Price \$283.

Height of ceilings, 8 ft. 2 in. All ceilings square, not hipped.

All lumber selected Huron Pine.

3 sills run lengthwise, one on each side and one through the center, and two sills at the ends.

Joists, 2x6 in. Studding and rafters, 2x4 in.

Joists, studding and rafters placed every 16 in.

Flooring, 1-inch matched, 3 inches wide.

Roof, 1-inch lumber overlaid with best prepared roofing.

Patent plaster board (to be nailed on studding) no lath or plaster required.

Siding $\frac{7}{8}$ inch.

Windows, size 26x60 in., two sliding sash, glass double strength.

Doors, 2 ft. 8x6 ft. 8, front door upper half glass.

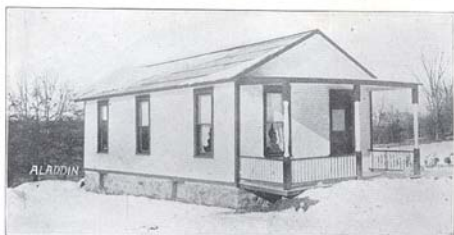
Porch columns, 5 inches, with railings. Base boards and all interior trim and finish.

Hardware, locks, hinges, knobs, nails, paint for two coats inside and out.



Floor Plan Style C
Size 16x26.

Aladdin Five-Room Dwelling House, Style F, \$365

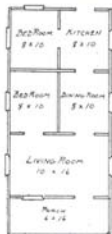


STYLE F—FIVE ROOMS.

Here is a handsome house designed along conventional lines and has always been a popular seller. A contractor would charge you not less than \$750.00 to build a house like this. It is actually worth that price when it is erected. It is truly an "Aladdin" house for it has been erected in **ONE DAY** by a crew of five men. This, of course, would not be possible by any other method of construction than ours, for we save three-quarters of the labor required by cutting out every stick in our mill, thereby reducing both cost of material and cost of labor. The house contains five rooms and handsome porch. Living room, two bed rooms, dining room and kitchen. It is truly an ideal comfortable, warm and attractive home.

SPECIFICATIONS—STYLE F.

Size 16x36 ft.—Price \$365.



Floor Plan Style F
Size 16x36.

Height of ceilings, 8 ft. 2 in.

All ceilings square, not hipped.

All lumber selected Huron Pine.

3 sills run lengthwise, one on each side and one through the center, and two sills at the ends.

Joists, 2x6 in.

Studding and rafters, 2x4 in.

Joists, studding and rafters placed every 16 in.

Flooring, 1-inch matched, 3 inches wide.

Roof, 1-inch lumber overlaid with best prepared roofing.

Patent plaster board, (to be nailed on studding) no lath or plaster required.

Siding $\frac{7}{8}$ inch.

Windows, size 26x60 in., two sliding sash, glass double strength.

Doors, 2 ft. 8x6 ft. 8, front door upper half glass.

Porch columns, 5 inches, with railings.

Base boards and all interior trim and finish.

Hardware, locks, hinges, knobs, nails, paint for two coats inside and out.

DID YOU EVER BUILD A HOUSE, OR HAVE ONE BUILT FOR YOU?

If you have, you know what "extras" cost. You know how much more your house cost than you expected it would, a hundred and one little extra fittings and things that you never thought of when the estimates were made. It is just the same, when a contractor builds your house, he always rings in a good bill for the "extras." **THERE ARE NO EXTRAS WHEN YOU BUY ONE OF THESE HOUSES.** You know absolutely what your house costs beforehand, plus a few days of ordinary labor—skilled labor not being necessary at any stage of its construction. Everything is furnished.

Aladdin Five-Room Dwelling House, Style G, \$397



STYLE G—FIVE ROOMS.

Style G has been the most popular of all our designs—the demand for it is constant. This is so because of its particularly attractive appearance and its general convenience. It is particularly desirable for the country, where ground space is not so valuable in frontage, for it is thirty feet long. Its long porch, attractive glazed front door, large central living room, two bed rooms, both placed on one side of house, and dining room and kitchen on the other makes it one of the most conveniently arranged homes imaginable. It is exceptionally well designed for strength and warmth, and when erected will last as long as any wooden structure ever built. As in all other houses, every piece of lumber in entire house is dressed on four sides, paneled doors are supplied for all rooms, flooring all matched, porch roof supported by handsome turned columns, and every piece guaranteed to be cut perfectly and fit exactly without the use of a saw. Style G is also made in size 28x30 ft., making living room 10x20 ft., and the other four rooms each 10x10 ft. This size has an 8x30 ft. porch.

SPECIFICATIONS—STYLE G.

Size 22x30 ft.—Price \$397. Size 28x30 ft.—Price \$518

Height of ceilings, 8 ft. 2 in.

All ceilings square, not hipped.

All lumber selected Huron Pine.

3 sills run lengthwise, one on each side and one through the center, and two sills at the ends.

Joists, 2x6 in.

Studding and rafters, 2x4 in.

Joists, studding and rafters placed every 16 in.

Flooring, 1-inch matched, 3 inches wide.

Siding $\frac{1}{2}$ inch.

Roof, 1-inch lumber overlaid with best prepared roofing.

Patent plaster board, (to be nailed on studding) no lath or plaster required.

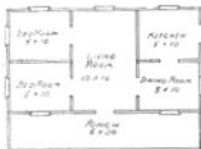
Windows, 26x60 in., two sliding sash, glass double strength.

Doors, 2 ft. 8x6 ft. 8, front door upper half glass.

Porch columns, 5 inches, with railing.

Base board and all interior trim and finish.

Hardware, locks, hinges, knobs, nails, paint for two coats inside and out.



Floor Plan Style G, Size 22x30.

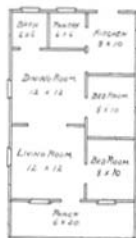


Aladdin Six-Room Dwelling House, Style J, \$492



STYLE J—SIX ROOMS.

A cosy, comfortable, convenient, warm home; that exactly describes this remarkable house. It is as good a building in every sense of the word for its size as money can buy, and when erected is worth \$1,200. Note the specifications below and you will see that it is designed and built exactly like any good contractor would build it. This house can be put up and completed by one inexperienced man ready to be papered and painted in one week. This is possible because every stick is cut the right size and ready to be nailed in place and because our instructions and drawings are so complete that no fitting, figuring or fussing is necessary. Every piece in the house is marked to correspond with the drawings. Study the floor plan and see how conveniently the house is laid out. Note the arch between living room and dining room, large porch etc. Style J is also made in size 24 x 36 ft, making two bed rooms and kitchen four feet wider.



Floor Plan Style J.

SPECIFICATIONS—STYLE J.

Size 20x36 ft.—Price \$492.

Size 24x36 ft.—Price \$590.

Height of ceilings, 9 ft. 7 in.

All ceilings square, not hipped.

All lumber selected Huren Pine.

Sills, 6x8 in. 3 sills run lengthwise, one in center and one on each side, two across ends.

Joists, 2x6 in. Studding and rafters, 2x4 in.

Joists, studding and rafters placed every 16 in.

Flooring, 1-inch matched, 3 inches wide. Siding $\frac{3}{4}$ inch.

Roof, 1-inch lumber overlaid with best prepared roofing.

Patent plaster board, (to be nailed on studding) no lath or plaster required.

Windows, 26x60 in., two sliding sash, glass double strength.

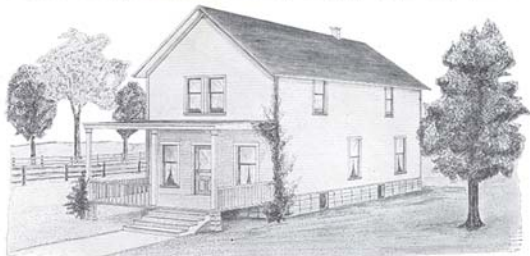
Base board and all interior trim and finish.

Porch columns, turned 5 in., with railing.

Doors, 2 ft. 8x6 ft. 8, front door upper half glass. Front and rear steps.

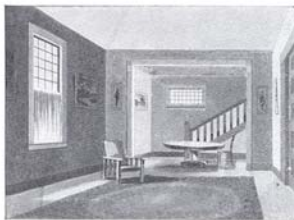
Hardware, locks, hinges, knobs, nails, paint for two coats inside and out.

Aladdin Eight-Room Dwelling House, Style M, \$846



STYLE M—EIGHT ROOMS, TWO-STORY.

An eight room two-story dwelling house complete in every detail, and without any extras to buy for this price—think of it! It is absolutely impossible by any other method of construction than ours. It is only possible because of the great extent of our business, our location in the heart of the timber lands and the automatic machinery in our plant. This machinery cuts the entire siding for one side of this house in one operation. And because it is cut by machinery it is absolutely accurate.



Interior Style M.

Style M has a cosy parlor, large living room, large dining room with open stairway leading from it, bed room, kitchen and pantry—all down stairs. Two large bed rooms and bath room are up stairs. An ideal home, perfect in design, construction and detail. The stairway has handsome post, balusters and railing with attractive diamond paned window above it. A large porch with turned columns and railing fronts the house. Style M is also made size 24x36 ft., making parlor, bed room and kitchen each 10x12 ft., \$970.

SPECIFICATIONS—STYLE M.

Size 20x36 ft.—Price \$846.

Height of ceilings, 9 ft. first floor; 8 ft. 3 in. second floor.

All ceilings up stairs and down stairs square, not hipped.

All lumber selected Huron Pine.

Sills, 6x8 in. Three sills run lengthwise, one in center and one on each side, two across ends.

Joists, 2x6 in. Studding and rafters, 2x4 in.

Joists, studding and rafters placed every 16 in.

Flooring, 1-inch matched, 3 inches wide.

Siding, $\frac{5}{8}$ in.

Roof inch lumber overlaid with best prepared roofing.

Patent plaster board (to be nailed on studding) no lath or plaster needed.

Base board and all interior trim and finish.

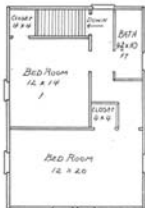
Porch columns turned 5 in., with railing.

Windows, 26x60 in., two sliding sash, glass double strength.

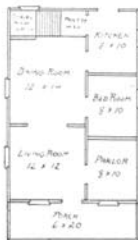
Doors, 2 ft. 8x6 ft. 8. Front door upper half glass.

Front and rear steps.

Hardware, locks, hinges, knobs, nails, paint for two coats inside and outside.



Second Floor, Style M.



First Floor, Style M.

Aladdin Wonder House, Style E, \$565

The most remarkable
House ever designed.



STYLE E—FIVE ROOMS.

On a ground space of 20x20 feet this house gives more room, more comfort, more convenience than has ever before been obtained. We spent many months study over this design for we wanted to produce a low cost house that would give: Two stories, having two bed rooms up stairs, each with closets; a hall, a living room, a dining room, a kitchen, an open stairway, a porch and above all, an attractive looking house. A careful study of the floor plans and the photograph will immediately show you that we have attained our ambition—a real Wonder House.

In the first place please note that the floor plan shows the porch extended out in front of the house, while the photo does not. We now furnish the house exactly similar to the photo, with porch set in but also extended out in front of house, giving a full 8x8 ft. porch with railing on both sides, but with no roof over the part extended out.

Note the exterior features: A sweep to the end of the trim on the eaves; a broad belt across front of house; diamond paned single sash window in hall over stairway; double extended diamond paned window in dining room. The inside of this double window has wide paneled trim around whole frame. A wide window fronts the house

ALADDIN WONDER HOUSE—Continued

in living room. Handsome 8-inch turned porch column with cap and base is an attractive feature of the porch.

And every piece of material in this house is cut from our carefully selected Huron pine. Every stick is cut to its proper size ready to be nailed in place. The stairway is, of course, all cut and of especially selected stock.

Two men erected and completed this house in exactly six days at Bay City. It can be done by any two men who are willing to work, assisted by our complete instructions and illustrations.

Remember that the price of this house includes absolutely everything for the complete house. You have nothing to buy after you receive it. Plenty of storage room is found on the second floor, and the entire house is roomy, airy and light.

Read the general description on pages 1, 2 and 3 of this catalog without fail, for it tells of the strength and warmth of Aladdin Houses.

SPECIFICATIONS WONDER HOUSE—STYLE E

Size 20x20 ft.—Price \$565.

All lumber selected Huron pine.

Height of ceilings, 9 ft. first floor; 8 ft. second floor.

Sills, 6x8 in.; three sills lengthwise, two across ends.

Joists, first and second floors 2x6 in., studding and rafters 2x4 in.

Joists, studding and rafters placed on 16-inch centers.

Flooring, 1 in. matched, 3 in. wide; siding $\frac{1}{2}$ in.

Roof, inch lumber, overlaid with best prepared roofing (or shingles.)

Patent Plaster Board (to be nailed on studding) No lath or plaster required.

Base board and all interior trim and finish.

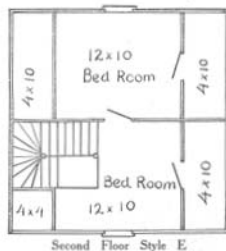
Porch column, 8 in. turned.

Windows, 2 ft. 6 in. x 5 ft., two sliding sash, double strength glass.

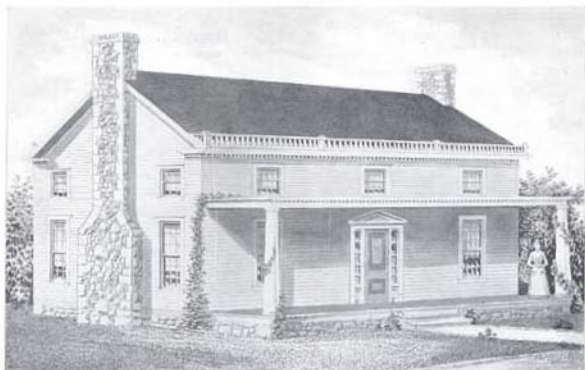
Doors, 2 ft. 8 in. x 6 ft. 8 in. Front door, upper half glass

Front and rear steps.

Hardware, locks, hinges, knobs, nails, paint and varnish for two coats inside and out.



Aladdin-The Colonial-Dwelling House, Style R, \$1,320



THE COLONIAL STYLE R—TWO STORIES.

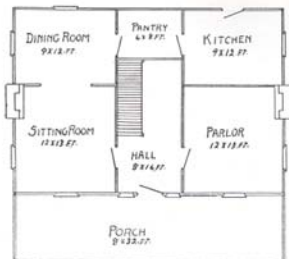
Typically Colonial—such as our Massachusetts forefathers built and handed down to the present generation. Wholesome in design, sturdy, comfortable—and lasting. Attractive because of its historical associations, of the period of 1776, it has delighted many purchasers and satisfied every requirement of what a home should be.

The large hall leads right square through the center of the house. Open stairway (Colonial design) takes up one-quarter of this hall, and doors lead to right into parlor, to left into sitting room. Open fireplace in parlor and sitting room, are optional with purchaser as we do not furnish material for these chimneys. Dining room is in rear of sitting room and pantry is between dining room and kitchen, with double swing doors. Up stairs there are four roomy bed rooms, with bath and linen closet. Plenty of light and room is the result.

All through this house you will find the true Colonial features. The design of the open stairway, the design of the interior trim, of doors, windows, etc., follow with great accuracy the typical Colonial mansion of a century ago. When erected the Colonial will last for generations.



The Colonial

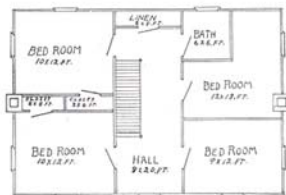


Floor Plan, "The Colonial," First Floor.

The ceilings in The Colonial, both upstairs and down, are all square, not hipped. First floor ceilings are 9 feet high, and upstairs 8 feet 3 inches. Windows are of the typically Colonial design, six lights to the sash, although if preferred we will furnish full sized glass, single light to each sash. All glass is double strength, of first grade.

Many instances occur where it is desired to erect a summer home in the mountains, on the seashore or other places where material for construction cannot be had at hand, and where skilled labor must be imported. Our method of construction is ideal for instances of

this kind for we ship your complete house in one shipment, all material being on the ground and any ordinary labor may be utilized.



Floor Plan, "The Colonial," Second Floor.

SPECIFICATIONS, "THE COLONIAL"—STYLE R.

Size 30x32 ft.—\$1,320.

Height of ceilings, 9 ft., first floor; 8 ft. 3 in., second floor.

All lumber selected Huron Pine.

Sills 6x8 inches; one sill on each side, one through center and two on ends.

Studding, 2x4 in.

Rafters, 2x4 in.

Joists, 2x8 inches down and 2x6 in. up stairs.

Joists, studding and rafters placed every 16 inches.

Flooring, 1-inch matched, 3 inches wide.

Roof, 1-inch lumber overlaid with best prepared roofing (shingles if preferred).

Patent plaster board (to be nailed on studding) no lath or plaster required.

Doors, 2 ft. 8x6 ft. 8 in.

Front door, Colonial design, with side lights.

Windows, 26x60 in., two sliding sash, double strength glass.

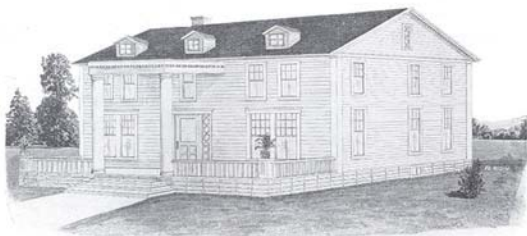
Base boards and all interior trim and finish.

Complete instructions and illustrations for erecting.

All hardware, locks, hinges, knobs, nails and paint for two colors inside and outside.



Aladdin--The Virginia--Style V, \$2,000



THE VIRGINIA--STYLE V.

The popularity of the southern type of architecture is too evident in its manifestations everywhere in recent years, to need further mention here. It is astonishing to note its modifications in modern homes. It crops out seemingly on every structure of recent date.

Here is a real Virginia mansion.

It covers less ground space than the old southern homes, but note the arrangements of rooms in the floor plans on opposite page. It is hard to conceive a more perfect plan. Every necessity of the modern high class residence is met, every convenience supplied—and at \$2,000 for the complete house.

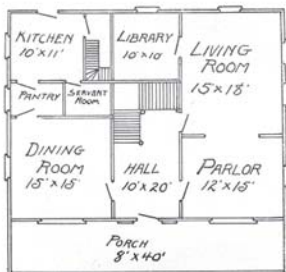
We have not copyrighted this design. The price, \$2,000, is the best copyright we could have. We do not fear that our design will be sold by others for we defy anyone to match the cost within \$1,500 of our price.

Note the handsome columns which front the house, in perfect harmony and proportion to the whole. The wide verandah, the square paneled railing posts, the dormer windows, the low pitched roof, the broad front door, with glass paneled sides; the beaded trim at the eaves, all necessary features of the true southern type. And this complete house sells for exactly \$2,000. Nothing to buy but the foundation.

We guarantee that this house can be erected in one-quarter the length of time required to build it by ordinary methods. By saving three-quarters the labor and by using unskilled labor you can readily see how great is the saving for the finished structure. No architects, contractors or carpenters necessary. You can either do the work yourself, supervise the work done or hire a handy, trustworthy man to supervise it. Our instructions and the simplicity of our method makes the work progress with ease and dispatch.

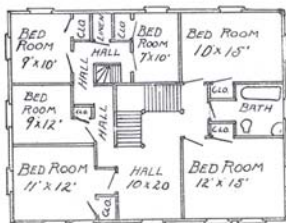


The Virginia, Style V



Floor Plan, The Virginia, Style V, First Floor.

A careful study of these floor plans will be a revelation on the utilization of space. A large reception hall centers the house. On the right front is the parlor, back of which is large living room, with arch between. Library leads from living room. On left of hall a large light dining room is found with pantry, kitchen and servants room. Rear stairs for servants use are a necessary feature of such a home. Open stairway leads to second floor where you find six bed rooms, bath room and linen closet.



Floor Plan, The Virginia, Style V, Second Floor.

SPECIFICATIONS, THE VIRGINIA—STYLE V.

Size 38x40 ft.—\$2,000.

Height of ceilings, first floor, 9 feet; second floor, 8 feet 3 inches.

All lumber selected Huron Pine.

Sills, 8x8 inches, one sill on each side, one through center and one at each end.

Studding, 2x4 in.; rafters, 2x6; joists, 2x8, first floor; 2x6 second floor.

Flooring, 1-inch matched, 3 inches wide.

Roof, 1-inch lumber overlaid with best prepared roofing (shingles if preferred).

Patent plaster board (to be nailed on studding) no lath or plaster required.

Doors, 2 ft. 8x6 ft. 8 in.; windows, 26x60 inches, two sliding sash, double strength glass.

Front and rear steps.

Front door, special design.

Base boards and all interior trim and finish.

Hardware, locks, hinges, knobs, nails, and paint for two coats for inside and out.

Special large fluted columns for portico.

Complete instructions and illustrations for erecting.



Aladdin Four-Room Dwelling House, Style H, \$486



STYLE H—FOUR ROOMS.

This attractive house is a very popular design, and has found favor in all localities. It presents a composite and harmonious design, very attractive from the outside and exceptionally convenient interior. It is a square house, such as many people prefer and the interior is arranged very attractively. The special design double window in dining room, with upper sash of leaded glass makes dining room very light and attractive. Arch leads from living room to dining room, closet off bed room, and pantry off of kitchen. If desired the dining room and living room will be supplied in one large 12x24 ft. room. This house would cost not less than \$1,200 if built by a contractor and is worth that amount in any part of the United States.



Floor Plan Style H.

SPECIFICATIONS—STYLE H.

Size 24x30 ft.—Price \$486.

- Height of ceilings, 9 ft. 7 in.
- All ceilings square, not hipped.
- All lumber selected Huren Pine.
- Sills, 6x8 in. 3 sills run lengthwise, one in center and one on each side, two across ends.
- Joists, 2x6 in. Studding and rafters, 2x4 in.
- Joists, studding and rafters placed every 16 in.
- Flooring, 1-inch matched, 3 inches wide. Siding $\frac{7}{8}$ inch.
- Roof, 1-inch lumber overlaid with best prepared roofing.
- Patent plaster board, (to be nailed on studding) no lath or plaster required.
- Windows, 26x60 in., two sliding sash, glass double strength.
- Base board and all interior trim and finish.
- Porch columns, turned 5 in., with railing.
- Doors, 2 ft. 8x6 ft. 8, front door upper half glass. Front and rear steps.
- Hardware, locks, hinges, knobs, nails, paint for two coats inside and out.



Aladdin Modern, Style O, \$1410



STYLE O—EIGHT ROOMS.

A typically modern American home. One that affords opportunity for every convenience and luxury while taking a comparatively small ground space and at an exceptionally low price. Such is the Style O shown here. You cannot equal all these distinct advantages anywhere, within \$800 of this price.

Note the spacious living room, 15x20 feet in size. A handsome open stairway is in the rear of this room. A group of three windows on the side and one in front gives a bright, cheerful living room. The parlor, size 15x15 feet, opens from living room with a large arch, and a double window in front and single window in the side gives plenty of light. The dining room is 15x15 feet and has double extended window and a single window. Kitchen is size 10x12 feet with pantry 3x10 feet, having double swinging doors. Up stairs you find three large bed rooms, bath, linen closet and hall, with closets for each bed room. And think of it—you receive this entire house, every single item for the complete structure, for the price of \$1,410.



Style O, First Floor



Style O, Second Floor.

SPECIFICATIONS—STYLE O

Size 30x30 ft.—Price \$1,410.

All lumber selected Huron pine.
Height of ceilings, 9 ft. first floor, 8 ft. 3 in. second floor.

Sills, 6x8 in.

Joists, 2x8 in. first floor; 2x6 in. second floor.

Foists, studding and rafters placed on 16-inch centers.

Flooring, 1 in. matched, 3 in. wide.

Siding, 3/4 in.

Roof, inch lumber, overlaid with best prepared roofing (or shingles.)

Patent Plaster Board (to be nailed on studding)

No lath or plaster required.

Base board and all interior trim and finish.

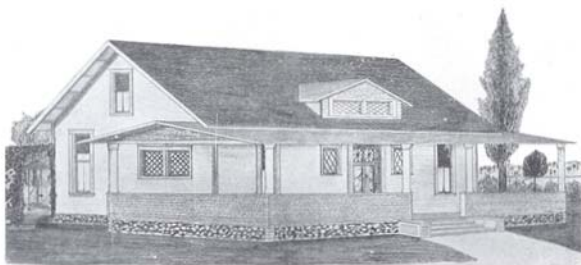
Porch columns turned eight inches, with special design railing.

Windows, 2 ft. 6 in. x 5 ft., two sliding sash, glass double strength.

Doors, 2 ft. 8 in. x 6 ft. 8 in. Front door special oval glass.

Hardware, locks, hinges, knobs, nails paint and varnish for two coats, inside and out.
Front and rear steps.

Aladdin—The Newport—Style S, \$1,470



THE NEWPORT—STYLE S.

With 52-foot Porch.

"Gentlemen, the King!"—of summer homes. Every feature that is demanded in the ideal summer residence is incorporated in this handsome structure. Air and freedom—comfort and convenience—these were the points sought after and attained in the design.

A 52-foot porch—16 feet deep at the ends.

A great, airy, central living room—16 feet wide, 22 feet deep and 20 feet to the peak of the beamed ceiling.

A diamond-paned dormer window throws light through the upper part of the room and two windows in rear and two in front make the lower part very light, in addition to the small glass in the handsome frontdoor. An attractive gallery runs around the two sides and across the front of this room, with open stairway leading to gallery at rear of room.

The rear of this room is so designed that large open fireplace may be placed if desired.

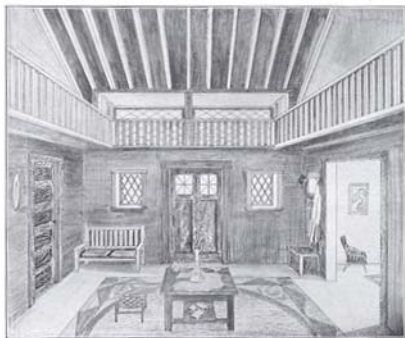
Arch leads to dining room, with kitchen in rear, and two bed rooms with bath between are on opposite side. Two light roomy bed rooms are on second floor; this gives living room, dining room, kitchen, four bed rooms and bath. Enough for family and friends.

This house erected by usual methods would cost you between \$3,000 and \$3,500. Our method of doing all the skilled labor in our mill, and by automatic machinery, saves a large proportion of the cost, aside from the fact that you buy the complete material direct from the forest.

This house is also furnished with two small dormer windows one on each side of large one, with ventilator windows for upper chambers. This adds nothing to the cost.



Plaster Board with the Newport



Interior, The Newport, Style S.

diamond-paned window in dining room, with swivel opening arrangement, admitting fresh air to upper part of room and light in plenty. All features of this house are in harmony.

We furnish plaster board for this entire house, making it thoroughly warm, as much so as any first class modern dwelling. Another feature of the plaster board is its heat resistance in the summer time. The Newport will always be found cool in the hottest weather.

The gable roof at ends of porch, the shingled porch railing and porch gable, the handsome turned columns on porch, make it very attractive in appearance. Note the long double

SPECIFICATIONS—THE NEWPORT—STYLE S

Size 30x35 ft.—\$1,470.

Height of ceilings, 9 ft. 7 in.

All lumber of selected Huron Pine.

Sills, 6x8 in. One sill on each side, one through center and two at ends.

Studding, 2x4 in.

Rafters, 2x6 in.

Joists, 2x8 in. down, and 2x6 up stairs.

Joists, studding and rafters placed every 16 inches.

Flooring, 1-inch matched, 3 inches wide.

Roof, 1-inch lumber overlaid with best prepared roofing. (shingles if preferred).

Patent Plaster board, (to be nailed on studding) no lath or plaster required.

Doors, 2 ft. 8 in. x 6 ft. 8 in.

Front door, heavy oak, glazed, special design.

Windows, 26x60 in., two sliding sash, double strength glass.

Front and rear steps.

Base boards and all interior trim and finish.

Hardware, locks, hinges, knobs, nails, and paint for two coats for inside and out.

Complete instructions and illustrations for erecting.



Floor Plan, The Newport, First Floor.



Floor Plan, The Newport, Second Floor.

Aladdin Bungalow, "The California," Style P, \$640

(In Winter Construction.)



The "California" is designed to meet the popular demand for the Bungalow type which originated in the fair state of California. This house typifies the present period of bungalow construction and presents a particularly attractive exterior and convenient interior. A large, very light combined living and dining room is at one end. An entrance hall opens into the living room through an arch. Bath room of commodious dimensions is off of hall. (If desired a closet, size 2x4 feet will be placed in end of bath room, door leading into front bed room, and leaving bath room 4x8 feet.) Two bed rooms, each 9x10 and kitchen, size 8x10, complete a convenient and attractive interior. A porch runs around three sides of house, being 8 feet wide and covered over entrance. Attractive ballusters are supplied for porch railing and special design, heavy oak front door with side lights.

SPECIFICATIONS—STYLE P.

Size 18x30 ft. (26x46 ft. over all)—Price \$640.

All lumber selected Huren pine.

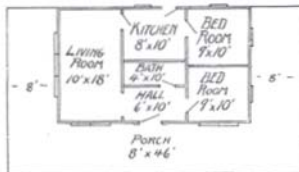
Height of ceilings, 9 ft.

Sills, 6x8 inches (one sill on each side, one through center and two across the ends.)

Joists, 2x6. Studding and rafters 2x4. Joists, studding and rafters on 16-inch centers.

Flooring, 1-inch matched, 3 inches wide. Siding $\frac{7}{8}$ inch.

Roof, inch lumber overlaid with best prepared roofing (or shingles.)



Floor Plan Style P

Patent Plaster Board (to be nailed on studding.)

No lath or plaster required.

Base board and all interior trim and finish.

Porch columns square, special design. Panded railing posts and railing.

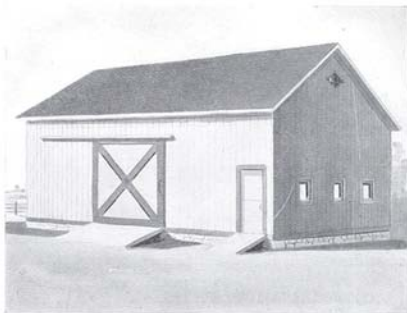
Windows, 2 ft. 6 in. x 5 ft.; two sliding sash, glass double strength.

Doors, 2 ft. 8 in. x 6 ft. 8 in.; front door special design of oak.

Front and rear steps.

Hardware, locks, hinges, knobs, nails, paint and varnish for two coats inside and out.

Aladdin Barn, Five Sizes



BARN.

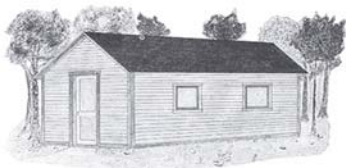
This "Aladdin" barn is very carefully designed to withstand the heaviest strains of wind and weather, heavy machinery, or in fact any possible strain or test ever encountered. The timbers are of extremely fine stock and so designed that they are easily erected and fastened together. In fact, it is a perfect structure and at a price that you must surely recognize as being very low. Large double doors on each side of barn. Interior may be arranged according to your requirements, with certain limitations. We allow for several stalls and granary. Every barn is reinforced with 2x6 collar beams.

PRICES.

- No. 1. Size, 20x30 ft.—Price \$338.
- No. 2. Size, 22x40 ft.—Price \$530.
- No. 3. Size, 30x40 ft.—Price \$650.
- No. 4. Size, 30x60 ft.—Price \$350.
- No. 5. Size, 40x60 ft.—Price \$1,090.

SPECIFICATIONS.

Height of side wall 16 ft.
 Sills, 6x8 in.
 Joists, 2x12 in.
 Studding, 2x6 in.
 Rafters, 2x6 in.
 Flooring, 2-in. plank.
 Perpendicular siding, one inch thick.
 Roof, inch lumber overlaid with best prepared roofing.
 Windows, 26x30 in., glass double strength.
 Large doors, 12x12 ft.
 Small door, 4x8 ft.
 All lumber and timber dressed four sides.
 3 sills run lengthwise, one on each side and one through the center, and two sills across the ends.



Aladdin Hunter's Lodge.

ALADDIN HUNTER'S LODGE--\$98.

This building is designed for settler's house, or hunter's lodge. It is built just like other houses, strong and substantial. One door in front and four windows, two on each side. Height of side wall 7 ft. 6 inches.

Size 12x16. Price complete, \$98.


Aladdin Summer Cottages

"Never in my life have I derived such pleasure and satisfaction from work or play as was given me from watching my ALADDIN house grow under my own hands. From a pile of lumber I fashioned a complete, sturdy house. Every step was intensely interesting; annoyance or trouble I experienced none, for every stick and board was marked and numbered and found its place perfectly. Gentlemen I congratulate you on your wonderful system, and thank you for the pleasure and profit you have given me."—G. K. MacEdward, Detroit, Mich.

The summer cottage is perhaps the most popular pleasure or summer recreation of to-day. Added to its common sense and healthful features there is the advantage of its economy, after first cost. Fresh air, outdoor life, change from monotony of home life and the pleasure of entertaining one's friends pleasantly all make for its popularity.

We show in the following pages a variety of designs, sizes and prices that will surely enable your ideas of a cottage to be gratified. You will note that every cottage has a commodious porch. The sizes run from two rooms up and the prices from \$98 up.

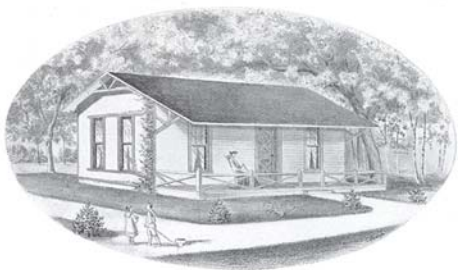
SUMMER COTTAGE CONSTRUCTION.

 Please bear in mind that our summer cottages are constructed to last for years. They are identical to our winter construction, except that we do not supply plaster board for interior. The partitions are of fine beaded matched lumber. Every piece of lumber in the whole house is dressed on all four sides, so that the entire interior may be oiled, stained or painted if desired.

Do not confuse Aladdin knock-down houses with the "Portable" kind. Aladdin houses are not portable in any sense. When erected they are exactly like any good house erected by a competent contractor. They cannot be taken apart. They are up to stay. Our summer cottages are really warm enough for occupying the year round in all except the coldest climates. Our siding is tongued and grooved, making a perfectly tight side wall, wind, rain and weather-proof.

Aladdin Five-Room Summer Cottage, Style KK

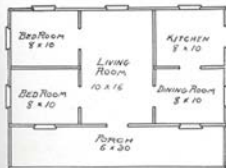
Price \$387



"THE RUSTIC"—STYLE KK—FIVE ROOMS.

Can you equal this in quaint design, comfort or appearance? Or in price, for a complete house? A big, roomy, shady porch, a large central living room, two bed rooms, dining room and convenient kitchen—five rooms, size 22 x 30 feet. This house has attracted much favorable comment wherever erected, for it is different from anything you've seen. We supply a specially designed, heavy panel front door, in harmony with general detail. The arrangement of rooms is such as we have found most popular and giving the maximum of room and convenience.

When you have erected and finished any one of the Aladdin houses you will not have a shaving on the ground. This does not mean that you will have no pieces left, for we usually furnish several pieces of each size of lumber extra, but it means that you won't have to use a saw or chisel in the work. Every piece is cut perfectly to fit by us.



Floor Plan, Style KK, Size 22x30.

Partitions matched ceiling.

Hardware, locks, hinges, knobs, nails, and two coats of paint for outside and inside.

SPECIFICATIONS—STYLE KK.

Size 22x30 ft.—Price \$387.

3 sills run lengthwise, one on each side and one through the center, and two sills at the ends.

Joints, 2x6 in.

Studding and rafters, 2x4 in.

Joints, studding and rafters placed every 16 inches.

Flooring, 1-inch matched.

Siding, $\frac{3}{8}$ inch.

Roof, 1-inch lumber overlaid with best prepared roofing.

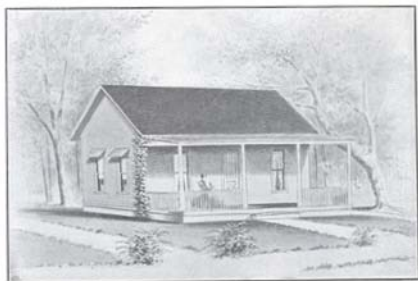
Windows, 26x60 in., two sliding sash, glass double strength.

Doors, 2 ft. 8x6 ft. 8, front door special design.

All lumber selected Huron Pine.

Aladdin Five-Room Summer Cottage, Style GG

Price \$357



STYLE GG—FIVE ROOMS.

The large porch running full length of Style GG has made it particularly attractive for summer or sea shore use. This porch is 6 x 30 feet. In the center of the cottage is a large living or lounging room. The above photo does not show this house with the handsome front door with upper half glass. We now supply this glass door with every house. The lay-out of the rooms in this house is particularly attractive, dining room and kitchen being on one side of house and bed rooms on the other side. Style GG never fails to give exceptional pleasure to all purchasers.

Over one hundred of these houses, Style GG, have been shipped to all parts of the country. Every purchaser has saved several hundred dollars. If it meets your requirements as to size, you cannot do better than to select it.

We also build Style GG in size 28x30, making living room 10x20 and other four rooms 10x10, with 8x30 porch.

SPECIFICATIONS.

STYLE GG—SUMMER COTTAGE.

Size 22x30 ft.—Price \$357.

Size 28x30 ft.—Price \$478.

3 sills run lengthwise, one on each side and one through the center, and two sills at the ends.

Studding and rafters, 2x4 in.

Joists, studding and rafters placed every 16 in.

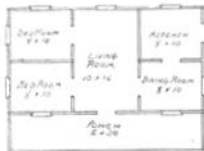
Flooring, 1-inch matched.

Siding, $\frac{1}{2}$ inch.

Roof, 1-inch lumber overlaid with best prepared roofing.

Windows, 26x60 in., two sliding sash, glass double strength.

Doors, 2 ft. 8x6 ft. 8, front door upper half glass.



Floor Plan, Style GG, Size 22x30.

Porch columns, 5 inches.

Partitions of matched ceiling.

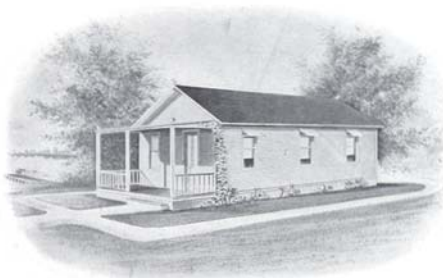
All lumber of selected Huron Pine.

All hardware, locks, hinges, nails, and paint for two coats inside and outside.



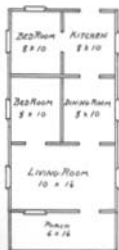
Aladdin Five-Room Summer Cottage, Style FF

Price \$298



STYLE FF—FIVE ROOMS.

Style FF is the original design of Aladdin Summer Cottages. It is perhaps the best known design in the world, for it has been shown in the largest magazines and papers in the country. It is particularly attractive in design, convenience and comfort, and never fails to give the greatest satisfaction to owners. Large living room, two bed rooms, dining room and kitchen offer every degree of comfort and make it a complete little home.



Floor Plan, Style FF.

Size 16x36.

SPECIFICATIONS—STYLE FF—SUMMER COTTAGE.

Size 16x36 ft.—Price \$298.

3 sills run lengthwise, one on each side and one through the center, and two sills at the ends.

Joists, 2x6 in.

Studding and rafters, 2x4 in.

Joists, studding and rafters placed every 16 in.

Flooring, 1-inch matched.

Roof, 1-inch lumber overlaid with best prepared roofing.

Siding, $\frac{3}{8}$ inch.

Windows, size 26x60 in., two sliding sash, glass double strength.

Doors, 2 ft. 6x6 ft. 8, front door upper half glass.

Porch columns, 5 inches.

Partitions matched ceiling.

All lumber selected Huron Pine.

All hardware, locks, hinges, knobs, nails, and paint for two coats inside and outside.

Remember that Aladdin houses are the original knock-down houses—the first that were ever placed on the market. We spent many years to perfect our method of manufacturing houses, so that any man, without previous skill with tools, can easily erect his own home.

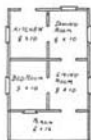
Aladdin Four-Room Cottage, Style DD

Price \$247



STYLE DD FOUR ROOMS AND STYLE CC THREE ROOMS.

Style DD Summer Cottage may be used in several different ways, with respect to its interior. It may be used as one bed room, one sitting room, a dining room and kitchen; two bed rooms, dining room and kitchen or three bed rooms and combined dining room and kitchen. It is cosy, compact and convenient—and remarkably low priced.



Floor Plan, Style DD.
Size 16x26.

SPECIFICATIONS—STYLE DD—SUMMER COTTAGE.

Size 16x26 ft.—Price \$247.

3 sills run lengthwise, one on each side and one through the center, and two sills at the ends.

Studding and rafters, 2x4 in.

Joists, studding and rafters placed every 16 in.

Flooring, 1-inch matched.

Roof, 1-inch lumber overlaid with best prepared roofing.

Siding, $\frac{7}{8}$ inch.

Windows, size 26x60 in., two sliding sash, glass double strength.

Doors, 2 ft. 8x6 ft. 8, front door upper half glass.

Porch columns, 5 inches.

Partitions of matched ceiling.

All hardware, locks, hinges, knobs, nails, and paint for two coats inside and outside.

All lumber selected Huron Pine.

STYLE CC SUMMER COTTAGE—THREE ROOMS.

Style CC gives a large 10 x 16 living and dining room and a bed room 8 x 10 feet and kitchen 8 x 10 feet. The only difference in the two styles is that one partition is left out.

SPECIFICATIONS—STYLE CC—SUMMER COTTAGE.

Size 16x26 ft.—Price \$243.

3 sills run lengthwise, one on each side and one through the center, and two sills at the ends.

Studding and rafters, 2x4 in.

Joists, studding and rafters placed every 16 in.

Flooring, 1-inch matched.

Roof, 1-inch lumber overlaid with best prepared roofing.

Siding, $\frac{7}{8}$ inch.

Windows, size 26x60 in., two sliding sash, glass double strength.

Doors, 2 ft. 8x6 ft. 8, front door upper half glass.

Porch columns, 5 inches.

Partitions of matched ceiling.

All hardware, locks, hinges, knobs, nails, and paint for two coats inside and outside.

All lumber selected Huron Pine.



Floor Plan, Style CC.
Size 16x26.

Aladdin Two-Room Summer Cottage, Style AA

Price \$150



STYLE AA—TWO ROOMS.

The photograph above tells the story of the attractiveness of this little cottage as well as volumes of description. Its porch makes an excellent summer living room and the two rooms may be used for any purpose desired. Dozens of these cottages have been erected all over the country and they are a continual delight to their owners. It is built just like our larger sizes, and will last just as long.



Floor Plan, Style AA.

Size 16x16, Price \$150.

Doors, 2 ft. 8x6 ft. 8, front

door upper half glass.

Porch columns, 5 inches.

Partitions of matched ceiling.

All hardware, locks, hinges, knobs, nails, and paint for two coats inside and outside.

All lumber selected Huron Pine.

SPECIFICATIONS—STYLE AA.

Size 16x16 ft.—Price \$150.

Height of ceilings, 8 ft. 2 in.

2 sills run lengthwise and two across the ends.

Studding and rafters, 2x4 in.

Joists, studding and rafters placed every 16 in.

Flooring, 1-inch matched.

Siding, 1/2 inch.

Roof, 1-inch lumber overlaid with best prepared roofing.

Windows, size 26x60 in., two sliding sash, glass double strength.

ALADDIN TWO-ROOM SUMMER COTTAGE—STYLE BB—\$126.



BB, Size 10x22

Price \$126.

Style BB is identical to Style AA except that the porch runs the short way of the house, and the windows are slightly different. This little cottage is wonderfully low priced, lower than it is possible to build a house even with inferior material. The price includes everything complete.

Aladdin Automobile Garages



ALADDIN AUTO HOUSE No. 1 AND No. 2.

Our Auto Garages are lower in price than you can secure a building of equal strength and appearance by any other method of construction. They are positively proof against vibration, will house a machine perfectly, no matter what its weight, and are warm and convenient. All lumber is dressed on four sides, making inside so that it may be either oiled or painted. Doors will, in all cases, admit car with top up. Any one of these houses can be erected in from one to three days by any unskilled man. Strong floor is supplied with every house.

No. 1 Aladdin Auto House—Size 10 x 16 feet. Designed for all sizes of runabouts. Height of walls 8 feet; studding and rafters, 2 x 4 inches; two sills run lengthwise and two across ends; joists studding and rafters placed every 16 inches; flooring 1-inch matched; siding $\frac{3}{4}$ -inch tongued and grooved; roof tongued and grooved matched lumber; size of large door 8 x 8 feet; runway 2-inch planks. Price includes all lumber cut to fit, all hardware, locks, nails, hinges, paint any color for two coats.

Price, complete.....\$89

No. 2 Aladdin Auto House—Size 12 x 20 feet. Designed for all sizes of touring cars; roomy, light and airy, with plenty of room for tools, accessories, etc. Same as above specifications, except that it has large window with glass in place, sash and trim.

Price, complete.....\$147

We are pleased to correspond with you on any subject appertaining to Aladdin houses. We will gladly answer any questions you care to ask, and seek an opportunity of convincing you fully of the merit and economy of our houses.

Aladdin Automobile Garages



ALADDIN AUTO HOUSE No. 3 AND No. 4.

No. 3 Aladdin Auto House—Size 16 x 20 feet. Designed for two touring cars, with ample room for accessories, tools, etc. At the price we quote it is a very remarkable house—harmonious in design, strong and substantial. You cannot equal it anywhere. Has large double paneled door in front with large window, and door and window in rear of house. Front door runs on best grade track and easily. Is perfect in every way for use in housing two touring cars.

Price, complete throughout\$200

No. 4 Aladdin Auto House—Size 20 x 20 feet, joists 2 x 6; three sills run lengthwise and two across ends; roof inch lumber overlaid with best prepared roofing; size of large door 8 x 9 feet; paneled door in rear, size 2 ft. 6 in. x 6 ft. 8 in; windows in front and rear size 26 x 60 inches, two sliding sash; runway 2-inch plank. Front door on best grade tracks.

Price\$240

The North American Construction Co. has never had a complaint from the purchaser of an Aladdin house. This is a remarkable record and testifies fully to the excellence of material, economy of construction, and our careful, thorough business methods.

We supply paint for body and trimming of these garages in any color specified, so that when finished they will harmonize with surroundings.

Aladdin Automobile Garages



ALADDIN PREMIER AUTO HOUSE.

A glance at the Premier is sufficient to acquaint you with its beauty, its size, its convenience, its durability. It may be placed alongside any house, in any surroundings with the assurance of adding value thereto. The Premier is 16 x 30 feet in size, has large door, size 8 x 9 feet; three windows each 26 x 60 inches, with two sliding sash and paneled door at side. Construction throughout is such that four heaviest type cars may be housed. Price, complete. \$275

Aladdin Premier B—Size 16 x 20 feet. Identical in construction and appearance and with three windows, paneled small door at side, etc. Price, complete. \$230

Read the letters of purchasers of Aladdin houses on last page of this catalog. Send for further testimony of like nature. It will be sent on request.

The advantages of keeping your machine under lock and key are well known. An investment in one of these garages will yield a monthly dividend of from 10 to 20 per cent.

Aladdin Boat Houses



All lumber in every Aladdin Boat House is of selected Huron Pine dressed on four sides. Every piece is cut to correct lengths and ready to be nailed in place. Each house is supplied with anchor braces to give extreme strength to frame, and the whole is perfectly



wind and weather proof. Price includes everything for the complete house, all lumber, hardware, nails, roofing, locks, paint, etc. Any one of these houses can be easily erected in one day.

No. 3 Aladdin Boat House—Size 8 x 20 feet, designed for skiffs and small sized launches.

Price, complete.....\$ 59

No. 5 Aladding Boat House—Size 8 x 26 feet. Height of walls, 7 feet; size of well, 6 x 26 feet; size front doors, 6 x 7 feet; size of rear door, 3 x 7 feet; inside platform, 2-inch plank; frame, 2 x 4; siding tongued and grooved, 1-inch lumber, roof tongued and grooved tightly matched lumber.

Price, complete.....\$ 74

No. 7 Aladdin Boat House—Size 36 x 10 feet; height of walls, 7 feet; size of well, 8 x 36 feet; size of front doors, 8 x 7 feet; size of rear door, 4 x 7 feet; inside platform 2-inch plank; frame of 2 x 4; siding tongued and grooved, 1-inch lumber; roof tongued and grooved tightly matched lumber.

Price, complete.....\$ 98

No. 9 Aladdin Boat House—Size 46 x 12 feet; height of walls, 8 feet; size of well, 10 x 46 feet; size of front doors, 10 x 8 feet; size of rear door, 4 x 8 feet; inside platform 2-inch plank; siding tongued and grooved, 1-inch lumber; roof tongued and grooved lumber, tightly matched.

Price, complete.....\$169

Several lumber concerns have recently advertised to furnish "all the material" for a house at a certain figure. We investigated and found that they supplied **ONLY THE ROUGH, UNCUT** lumber for that price. They did not include any mill work, any doors, any windows, any roofing, shingles or hardware. Neither do they supply flooring, paint or glass. We supply all these things for the complete house for the price stated.

What Buyers of Aladdin Houses Think of Them

Glenn Spring Heights, Stamford, Conn.

December 2nd, 1908.

NORTH AMERICAN CONSTRUCTION CO.,

Bay City, Michigan.

Gentlemen—The Style F house you sent me proved very satisfactory. Everything in the entire house was cut to a perfect exactness and fitted correctly. I certainly do recommend your houses as neat, comfortable, attractive and money saving, and I will be pleased to show my house to anyone whom you might send here to look at it. Thanking you for your promptness and past favors, I am,

Yours very truly,

M. J. CUMMINGS.

"My hired man erected the No. 1 garage in a few hours. I was very much surprised at the high quality of the lumber and other materials supplied." G. H. Slocum, Detroit, Mich.

"I have one of the Style F, just about completed and will start on the other Style F, erecting it a short distance away as soon as the weather moderates. The work was extremely easy and everything is fine." B. H. McLane, Middle Haddam, Conn. (Mr. McLane bought two of our Style F houses).

"The Style J has just arrived and is now on the ground. I examined the material very carefully and am much pleased with the quality." F. A. Sweezy, Sweezy Realty Co., Newark, N. J.

"I don't see how you can give so much for the money. Am more than pleased with my Style B house." George J. Stivers, 1834 Rase street, Philadelphia, Pa.

"We found all materials according to specifications and even had a few pieces of each kind left over in Style F, which I bought of you." H. T. Allen, 726 Sansom street, Philadelphia, Pa.

"Am more than pleased with every part of Style J house which I have just finished. The lumber is the best." R. D. Mayhew, R. F. D. No. 3, Manito, Mason county, Ill.

"Would be pleased to recommend your buildings to anyone. My style J is perfectly satisfactory." E. J. Snyder, Clairton, Pa.

"Am much pleased with cottage I purchased from you." Dr. Alfred R. Perrin, 1276 Lexington avenue, New York City.

NORTH AMERICAN CONSTRUCTION CO.

Bay City, Michigan.

Read Pages One, Two and Three.

Reference: Commercial Bank, Bay City.

TERMS.

50 per cent. cash with order and balance C. O. D. This is an invariable rule and is not meant to be a reflection on your financial standing. We absolutely will not sell houses on any other except a strictly cash basis. All prices subject to advance in price of lumber. (Discount of 5 per cent. allowed for full amount of cash with order).

NORTH AMERICAN CONSTRUCTION CO.,

Bay City, Michigan.



