



HOME

ALADDIN HOUSES



ALADDIN HOUSES

"Built in a Day"



CATALOG No. 24
SPRING 1913

NORTH AMERICAN
CONSTRUCTION COMPANY

GENERAL OFFICES

BAY CITY, MICHIGAN, U. S. A.

MILLS IN

MICHIGAN, TEXAS, CALIFORNIA,

OREGON, FLORIDA, MISSOURI.

*Address All Communications Direct to Home Offices
at Bay City, Michigan*

THE ALADDIN HOUSE AT A GLANCE

Foundation timbers cut to fit.

Joists, studding, rafters, and ceiling joists all accurately cut to fit.

Sheathing lumber for all outside walls cut to fit.

Bevel siding, every single piece guaranteed to be cut and to fit accurately.

Outside finishing lumber, all mitered.

Flooring, cut to fit. Roof sheathing, cut to fit.

Porch timbers, joists, flooring, columns, railing and posts, moulding, roof sheathing and roofing, all and every piece cut to fit except porch rail, uncut.

Extra Star-A-Star Cedar shingles or prepared roofing.

Steps for front and back, cut and shaped to fit.

Doors for all openings, mortised, and with frame and trim inside and out.

Windows and frame, sash, with glass in place, and trim inside and out.

Moulded base board for inside rooms, not cut to fit.

Weather moulding for trimming all outside doors and windows, cut to fit.

Crown mould, etc.

Stairways for all two-story houses cut to fit.

All hardware. Mortise locks, knobs and hinges, tin flashing.

Nails of proper size for entire house.

Paint for two coats outside and inside (any color), shellac, putty, oils, and varnishes.

Plaster board for lining entire house, or lath and plaster.

Instructions and illustrations for doing all the work.

Compare the above items with any lists of materials furnished for other so-called complete houses.

(Aladdin houses are always shipped under the freight classification of lumber with the L. C. L. material listed under their respective classifications.)

The floor plan of any house in this catalog will be reversed without extra charge.

TERMS

Twenty-five per cent. cash with order, balance C. O. D. This is not meant as a reflection on your financial standing, but is an invariable rule, and we will not sell houses on any other terms. A discount of 5 per cent. is allowed from these prices where full amount is sent with order. For your convenience, we have shown the list price and the net price with each house.

NORTH AMERICAN CONSTRUCTION COMPANY BAY CITY, MICHIGAN

REFERENCES:

Bradstreet's Commercial Agency, Commercial Bank, or Bay City Bank, Bay City, Michigan

Address all Communications Direct to Home Office
at Bay City, Michigan





THE ALADDIN PLAN

SAVE all cost which adds no value by selling "direct from the forest to the home." Ordinarily, the home builder pays from two to four times the actual cost of production for every piece of material that goes into his house. The reason for the high cost is, that the goods pass through so many hands and with as many profits added. The lumber, starting with the lumberman, who cuts the timber, to the mill owner, from the mill to the big wholesaler, from the wholesaler to the planing mill, from the planing mill to the local lumber yard. Each middleman adds his expense, his losses, his profits. All these are piled up in the retail price and must be paid by YOU.

The North American Construction Company originated the Read-Cut system of house construction.

An Aladdin house is exactly like any other well-constructed house when it is erected. It cannot be taken apart except as you would tear apart any good house.

A saw is practically unnecessary in any part of the erection of one of our houses. We do the measuring, sawing, and fitting in our mills, by automatic machinery and best skilled labor.

Our mills are situated right in the heart of the great timber lands of Michigan, Florida, Texas, Oregon, Missouri, and California.

When erected, an Aladdin house will last for several generations, as long as any other well-constructed house.

Aladdin houses are the only Read-Cut houses manufactured to-day.

Aladdin houses are designed so that mill-run lengths are used almost throughout. Using mill-run lengths makes unnecessary the cutting to waste of good lumber. We reduce waste in everything down to less than two per cent. That's one reason why we can furnish No. 1 Yellow Pine and Huron Pine in every house at such low figures.

Skilled labor is really unnecessary in the erection and completion of an Aladdin house—because we supply the skilled labor in our mills, preparing the entire house for you to fit and nail together in a few days.

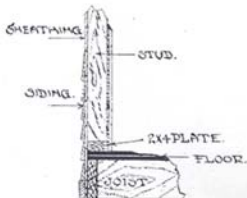
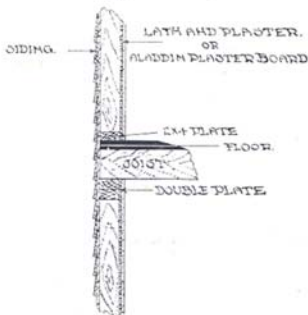
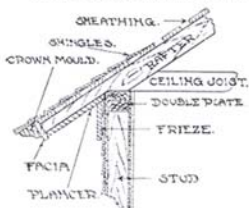
Stop and think what that means—"direct from the forest to the home." It means that you are buying your house at the same price it costs us

here—right where the timber grows—to build a house. It means that your house costs you no more than if you could go direct to a mill at the edge of the forest and buy the timber and lumber. It means that

you are really doing that very thing, buying it from the mill at the edge of the forest. It means that you are not paying a profit to the big jobber, a profit to the big wholesaler, and a profit to the local lumber dealer at your door, and on top of all that the freight for shipping the lumber to the local places where each does business. The house is shipped to you

"DIRECT FROM
THE FOREST TO
THE HOME."

"direct from the forest to the home." Another thing, each of the above lumber dealers sells on credit. They all add from 5 per cent. to 10 per cent. to make up for bad accounts — losses which are charged up in your bill. We sell for cash only — we have no bad accounts, and are therefore not obliged to take from the man who pays to make up for the man who doesn't pay.



Each price of each house in this catalog pays for the complete house.

A complete house means all lumber cut to fit accurately for the foundation timber, the joists, studding and rafters, ceiling joists,

sheathing for outside walls, the siding, the flooring: the

porch timbers, joists, flooring, columns, railing, steps; the roofing or shingles, roof sheathing; doors, half-glass for outside and paneled for all inside openings; windows, with glass in place; window sash, inside and outside window trim and inside and outside door trim; moulded base board for all inside rooms, weather moulding for trimming all outside doors and windows, crown mould; all hardware mortised locks for all doors; handsome burnished art brass locks and hinges for doors; nails for entire house; paint for two coats inside and outside, oils, varnishes, shellac, putty, and plaster board or lath and plaster for lining entire house inside; plasto-filler. Complete instructions.

Every piece of framing and sheathing lumber in every Aladdin house has been carefully selected from the highest grade of Huron Pine, and clear Yellow Pine is used for all inside finish at the Bay City mills. From our Florida, Missouri,

and Texas mills we use all Yellow Pine. From the California mill we ship redwood siding and outside finish and Oregon Fir framing, flooring, and inside finish. From our Oregon mill we ship all material in fir. It is carefully inspected by experienced men, and if not up to a high standard is used. This is an extremely important point and you should consider it fully. Our facilities for buying high grades are unequalled by any mill.

THE LUMBER
WE USE

facturer of lumber in the country. This means much to the purchaser—to know the quality of materials used—to know that the lumber and timber are the best; that it is well seasoned, sound, and of first quality throughout. All the interior finish, doors, etc., are put through three separate sanding machines, making a beautiful finish.

ALADDIN PLASTER BOARD OR LATH AND PLASTER—YOUR CHOICE

Aladdin plaster board is the greatest single achievement in the builders' craft in the last generation.

ALADDIN PLASTER BOARD

Aladdin plaster board makes a perfect wall; it is easily and quickly put on; its remarkable construction gives absolute protection against extremes in weather; it is positively fireproof; it deadens sound.

In actual, carefully conducted, comparative tests a house lined with Aladdin plaster board required 18 per cent. less coal to keep it at a temperature of 70 degrees than a house of identical size and construction, but which had the usual lath and plaster inside walls.

The above test gave definite proof of the superiority of Aladdin plaster board over lath and plaster.

It will not crack with age, nor loosen from dampness, as will the ordinary plaster.

It comes in sheets 32 x 36 inches in size and is nailed directly to the studing. The plaster alone in Aladdin plaster board is equal in warmth to ordinary plaster, while the four layers of wool felt are more than equal in protection to inch lumber sheathing and building paper combined.

We also furnish a special Plasto-filler, which when mixed with water is used to fill all joints of the plaster board, giving a smooth, perfect wall, upon which you paper direct or use kalsomine, or, as we sometimes recommend, you can put a putty coat or hard plaster finish directly onto the board.

We will furnish either lath and plaster or plaster board, whichever is specified by customer.

With every Aladdin house, paint of any color, for two coats inside and outside is furnished. You will be sent, on request, our large color card of many beautiful colors. You may select as many different colors as you wish to choose for body, trimmings, porch floor, porch ceiling, window sash, etc., and you may have either paint, oil and varnish, or stain and varnish, for the interior finish. Shellac and putty are also included with the paint. We also furnish the highest grade of pure white lead and linseed oil with dry colors.

THE WARMTH OF ALADDIN HOUSES

We have ample proof of our unqualified statement that Aladdin houses are as warm as any house outside of solid masonry. We have letters from many owners of Aladdin houses in the northernmost section of the United States stating that their houses are **WARMER** than any wooden house they ever lived in.

WASTE

People have not yet learned the first principles of economy in house construction. In buying lumber in the usual way you pay for about 18 per cent more material than is used—18 per cent. simply wasted, and, at the least, you pay for 50 per cent. more time and labor than necessary.

The architect, in designing a house, seldom considers the subject of cutting material to waste. He lays out the dimensions of the house, places windows, doors, etc., without any thought of how the material will cut. The contractor orders so many thousand feet of siding, of flooring, of 2 x 4, of 2 x 6, etc., without any thought as to the utilization of mill-run lengths. You, of course, know that sawmills cut logs in certain lengths, 12 feet, 16 feet, 20 feet, and it comes through the planing mill in those same lengths. It also comes to the contractor in the same lengths. When the carpenter cuts the siding to fit between two windows, the windows may be 10 feet 1 inch apart. He has to take 14 pieces of siding each 12 feet long and cut each one of them 10 feet 1 inch, wasting 1 foot 11 inches, or about 18 per cent. of good lumber absolutely wasted.

This waste is eliminated by the Aladdin designers and the Aladdin system.

FACTS

You pay but one profit on all the material.

You know exactly what your complete house will cost. Everything is included in the price stated in this catalog and in specifications.

THE ADVANTAGES TO YOU IN BUYING AN ALADDIN HOUSE

You know exactly what your completed house will look like. We show you photographs of your house, inside and outside, floor plans, furnish complete specifications.

You save several months' time, for we usually ship your house promptly upon receipt of your order. It can be erected in one-third the usual time.

You can do all the work yourself, easily, for we furnish such complete instructions and illustrations that you will need practically no assistance from skilled labor in any part of the work.

Or you can hire an ordinary carpenter to do the work by the day.

You can get the best grade of material throughout the entire house at a less price for the completed house than you can buy through any other source.



ALADDIN — PRONOUNCED A-LADD'-IN

WARMTH OF AN ALADDIN HOUSE

ONE of the most essential things to consider in the purchase of a home, in northern climates, is its construction as to warmth.

The economical and saving housewife of to-day greatly laments the increase in the cost of fuel, and she is, therefore, anxious to reduce the household expenses and cut down the cost of maintaining a home and keeping it warm.

Contractors and real estate men say among themselves that the only thing necessary is a good coat of paint on the outside to cover up and paper on the inside, and they can sell any house. This is not our method of doing business. We have aimed to furnish the warmest construction so as to reduce the fuel bills to a minimum. On the outside of the studding we furnish sheathing and on the outside of the sheathing, bevel siding. Four inches in from this outside wall we furnish plaster board for lining the inside walls, ceilings, and partitions. Between the plaster board, sheathing and siding on the outside is a four-inch dead air space which in itself is one of the best nonconductors of heat and cold.

The plaster board is composed of four layers of wool felt. Wool felt itself, from its very composition, prevents penetration of either heat or cold. This plaster board is not only composed of one layer of Wool Felt but has four layers. Between each layer is placed finest-grained plaster so that any building lined with the plaster board is exceptionally warm.

To secure a perfect dead air space, which permits of no circulation of cold or heat, we have capped the top of every stud for the side walls with two 2 x 4 plates. No cold can penetrate down between the walls through these plates. At the bottom of each wall we also furnish a 2 x 4 plate, which is laid on top of the floor. This is known as a fire-stop construction demanded by the best building codes in our largest cities, and insurance companies favor this type of construction, for it prevents fire starting in the basement and creeping up through the side walls. At the same time fire starting on the first floor of the house cannot, with this construction, creep up the side walls to the second story, so that in furnishing a house as warmly constructed as it is possible, we, at the same time, furnish the building with a fire-stop construction demanded by the best authorities.

It would be very discouraging and very unsatisfactory to live in any house that requires a big outlay of money for fuel, and then be unable to keep it warm in the coldest weather.

We have any number of letters and references from customers of Aladdin houses, who have lived in them for years. These customers will tell you that their houses are the warmest constructed houses they ever lived in. Their names and addresses will be gladly furnished you upon request. The exceptional warmth of an Aladdin house is one of its many desirable features.



32°

BELOW ZERO
and comfortable
as could be desired

ALADDIN
READI-CUT
HOUSES
SAVE
MONEY

ALADDIN
BUNGALOW
erected at

MOOSE JAW
SASKATCHEWAN
CANADA



ALADDIN TWO-ROOM DWELLING HOUSE THE ANSON

THE Anson is a cosy, attractive little house of two rooms, with big porch running full length of house. It is built just like our most expensive house, only smaller. Its construction throughout is identical to our larger sizes. It has glass in front door, divided light window in end, and handsome turned columns on porch. Size 20 x 16 ft. has two 10 x 10 ft. rooms. Size 20 x 18 ft. has two 10 x 12 ft. rooms.

SPECIFICATIONS

Size, 16 x 16 ft. Price, \$208. Cash Discount, 5%. Net Price, \$197.60. See Terms.
Size, 20 x 16 ft. Price, \$259. Cash Discount, 5%. Net Price, \$246.05. See Terms.
Size, 20 x 18 ft. Price, \$306. Cash Discount, 5%. Net Price, \$290.70. See Terms.

Height of ceilings, 8 ft.

All ceilings square, not hipped.

All lumber selected Yellow Pine and Huron Pine.

Joists, 2 x 6 in.

Studding, rafters, and ceiling joists, 2 x 4 in.

Joists and studding placed every 16 in.

Sheathing lumber. Flooring, 1-inch matched, 3 inches wide. Bevel siding.

Roof, 1-inch lumber, overlaid with best prepared roofing or shingles.

Patent plaster board or lath and plaster.

Window openings, 30 x 66 in., two sliding sash, glass double strength.

Doors, outside, 2 ft. 8 in. x 6 ft. 8 in.; inside, 2 ft.

8 in. x 6 ft. 8 in., front door, upper half glass. Porch columns, 5 inches.

Base board and all interior trim and finish clear Yellow Pine.

Hardware, locks, hinges, knobs, nails, paint for two coats inside and outside.



The Bison, 10 x 22



Floor Plan, Style Anson.
16 x 16



THE BISON

Size, 10 x 22 ft. Price, \$196. Cash Discount, 5%.

Net Price, \$186.20. See Terms.

Size, 10 x 26 ft. Price, \$230. Cash Discount, 5%.

Net Price, \$218.50. See Terms.

Size, 12 x 26 ft. Price, \$274. Cash Discount, 5%.

Net Price, \$260.30. See Terms.

The Bison is identical to The Anson in size and construction, except that porch runs short way of house and the slight changes in windows noted on floor plan. It is a big seller. Size 10 x 26 ft. has two 10 x 10 ft. rooms. Size 12 x 26 ft. has two 10 x 12 ft. rooms.



ALADDIN FOUR-ROOM DWELLING HOUSE THE DELTA

MANY a man of moderate means would like to own his own little home, but has not got the money, from \$500 to \$800, to buy a cottage already built or to have it built by carpenters for him. To all such, the "Aladdin" knock-down house is just the thing, because it can be built by themselves at simply a cost of their own time, plus our price for all the material, or can have it nailed together under their own supervision by unskilled labor. Either course will save several hundred dollars. We guarantee all "Aladdin" houses to be absolutely weather-proof, warm, strong, durable, and modern in design — as much so as any house built by usual methods, and will last just as long. Blinds not included.

The Delta is a cosy little four-room house, exactly like any other house in this catalog except in size. Size 20 x 30 ft. has four 10 x 12 ft. rooms.



Floor Plan, Style
Delta. 16 x 26

SPECIFICATIONS

Size, 16 x 26 ft. Price, \$345. Cash Discount, 5%. Net Price, \$327.75. See Terms.
Size, 20 x 30 ft. Price, \$484. Cash Discount, 5%. Net Price, \$459.80. See Terms.

Height of ceiling, 8 ft. All ceilings square, not hipped.

All lumber selected Yellow Pine and Huron Pine.

Joists, 2 x 6 in.

Studding, rafters, and ceiling joists, 2 x 4 in.

Joists and studding placed every 16 in.

Flooring, 1-inch matched, 3 inches wide.

Roof, 1-inch lumber, overlaid with best prepared roofing or shingles.

Patent plaster board or lath and plaster.

Sheathing lumber. Bevel siding. Front and rear steps.

Doors, outside, 2 ft. 8 in. x 6 ft. 8 in., inside, 2 ft. 8 in. x 6

ft. 8 in.; front door, upper half glass.

Window openings, size, 30 x 66 in., two sliding sash, glass double strength.

Porch columns, 5 inches, and railings. Base board and all interior trim and finish clear yellow pine.

Hardware, locks, hinges, knobs, nails, paint for two coats inside and outside.



The Carson. 16 x 26

ALADDIN THREE-ROOM DWELLING HOUSE THE CARSON

Same as The Delta, except it has large 10 x 16 ft. room in front.

16 x 26 ft. Price, \$336. Cash Discount, 5%. Net Price, \$319.20. See Terms.

20 x 30 ft. has one 20 x 12 ft. room and two 10 x 12 ft. rooms.

20 x 30 ft. Price, \$474. Cash Discount, 5%. Net Price, \$445.30. See Terms.



ALADDIN FOUR-ROOM DWELLING HOUSE THE RODNEY

FOUR rooms, a 20 x 6 ft. porch, with railing, double casement window in dining room, and generally of harmonious design — these are the special features of The Rodney. It is a particularly good seller and always gives the highest pleasure to its owners. Whenever another room or two is desired it can be added to the rear at very slight effort and expense. Size 24 x 26 ft. has four 10 x 12 ft. rooms.

SPECIFICATIONS

Size, 20 x 22 ft. Price, \$366. Cash Discount, 5%. Net Price, \$347.70. See Terms.
Size, 24 x 26 ft. Price, \$520. Cash Discount, 5%. Net Price, \$494.00. See Terms.



Floor Plan, Style Rodney

Height of ceilings, 8 ft. All ceilings square, not hipped.

All lumber selected Yellow Pine and Huron Pine.

Joists, 2 x 6 in.

Studding and rafters, 2 x 4 in.

Joists, studding, and ceiling joists placed every 16 inches.

Flooring, 1-inch matched, 3 inches wide.

Sheathing lumber. Bevel siding.

Roof, 1-inch lumber, overlaid with best prepared roofing or shingles.

Patent plaster board or lath and plaster.

Window openings, 30 x 66 in., two sliding sash, glass double strength.

Doors, outside, 2 ft. 8 in. x 6 ft. 8 in., inside, 2 ft. 8 in. x 6 ft. 8 in.; front door, upper half glass.

Porch columns, 3 inches, with railing. Front and rear steps.

Base board and all interior trim and finish clear Yellow Pine.

Hardware, locks, hinges, knobs, nails, paint for two coats inside and outside.



ALADDIN FIVE-ROOM DWELLING HOUSE THE FRISCO

HERE is a handsome house designed along conventional lines and has always been a popular seller. A contractor would charge you not less than \$750 to build a house like this. It is actually worth that price when it is erected. It is truly an "Aladdin" house, for it has been erected in **ONE DAY** by a crew of six men. This, of course, would not be possible by any other method of construction than ours, for we save three-quarters of the labor required by cutting out every stick in our mill, thereby reducing both cost of material and cost of labor. The house contains five rooms and handsome porch, living room, two bed rooms, dining room, and kitchen. It is truly an ideal, comfortable, warm, and attractive home.

SPECIFICATIONS

Size, 16 x 36 ft. Price, \$414. Cash Discount, 5%. Net Price, \$393.30. See Terms.

Height of ceilings, 8 ft. All ceilings square, not hipped. All lumber selected Yellow Pine and Huron Pine.

Joists, 2 x 6 in. Sill, 4 x 6 in. Studding and rafters, 2 x 4 in.

Joists, studding, and ceiling joists placed every 16 inches.

Flooring, 1-inch matched, 3 inches wide. Sheathing lumber.

Roof, 1-inch lumber overlaid with best prepared roofing or shingles.

Patent plaster board or lath and plaster.

Bevel siding. Front and rear steps.

Doors, outside, 2 ft. 8 in. x 6 ft. 8 in., inside, 2 ft. 8 in. x 6 ft. 8 in.; front door, upper half glass.

Window openings, size, 30 x 66 in., two sliding sash, glass double strength.

Porch columns, 5 inches, and railings.

Base boards and all interior trim and finish clear Yellow Pine.

Hardware, locks, hinges, knobs, nails, paint for two coats inside and outside.



Floor Plan, Style Frisco



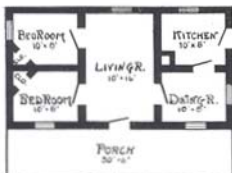
ALADDIN FIVE-ROOM HOUSE THE GRETNA

THE Gretna has been the most popular of all our designs — the demand for it is constant. This is so because of its particularly attractive appearance and its general convenience. It is particularly desirable for the country, where ground space is not so valuable in frontage, for it is thirty feet long. Its long porch, attractive glazed front door, large central living room, two bed rooms, both placed on one side of house, and dining room and kitchen on the other, make it one of the most conveniently arranged homes imaginable. It is exceptionally well designed for strength and warmth, and when erected will last as long as any wooden structure ever built. As in all other houses, every piece of lumber in entire house is dressed on four sides, paneled doors are supplied for all rooms, flooring all matched, porch roof supported by handsome turned columns. You may have your option of either floor plan shown below at same price.

SPECIFICATIONS

Size, 22 x 30 ft. Price, \$421. Cash Discount, 5%.
Net Price, \$399.95. See Terms.

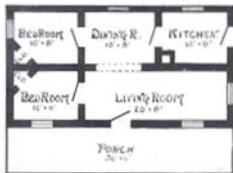
Height of ceiling, 8 ft. All ceilings square, not hipped.
All lumber selected Yellow Pine and Huron Pine.
Joists, 2 x 6 in. Sill, 4 x 6 in.
Studding, rafters, and ceiling joists, 2 x 4 in.
Joists, studding, and ceiling joists placed every 16 in.
Sheathing lumber. Flooring, 1-inch matched, 3 inches wide.
Bevel Siding.
Roof, 1-inch lumber, overlaid with best prepared roofing or shingles.



Floor Plan, Style Gretna. 22 x 30

Windows, 30 x 66 in., two sliding sash, glass double strength.
Patent plaster board or lath and plaster.
Doors, outside, 2 ft. 8 in. x 6 ft. 8 in., inside, 2 ft. 8 in. x 6 ft. 8 in.; front door, upper half glass.
Porch columns, 5 inches, with railing. Front and rear steps.
Base board and all interior trim and finish clear Yellow Pine.
Hardware, locks, hinges, knobs, nails, and paint for two coats inside and out.

See Terms on page 2.





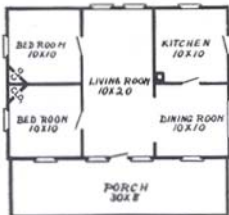
ALADDIN FIVE-ROOM DWELLING HOUSE THE GENEVA

WE show here two houses that you will notice to be very similar to the ever-popular Gretna. They are larger and offer you a selection between two floor plans, at practically the same price. It is our aim to give as large a selection as possible to conform to the tastes and needs of different people. The double casement window in the end, with diamond-paned windows, the two square windows, one on each side of the front door, the large oval glass door, are all very attractive features.

SPECIFICATIONS

Geneva No. 1. Size, 28 x 30 ft. Price, \$612. Cash Discount, 5%. Net Price, \$581.40. See Terms.

Geneva No. 2. Size, 28 x 30 ft. Price, \$627. Cash Discount, 5%. Net Price, \$595.65. See Terms.



Floor Plan, Style Geneva No. 1

Patent plaster board or lath and plaster.
Window openings, 30 x 66 in., sliding sash, glass double strength.
Doors, outside, 2 ft. 8 in. x 6 ft. 8 in., inside, 2 ft. 8 in. x 6 ft. 8 in.; front door, upper half glass.
Porch columns, 6 inches, with railing.
Base board and all interior trim and finish clear Yellow Pine.
Hardware, locks, hinges, knobs, nails, and paint for two coats inside and outside.

Height of ceiling, 9 ft.
All ceilings square, not hipped.
All lumber selected Yellow Pine and Huron Pine.
Joists, 2 x 6 in. Sill, 6 x 6 in. Studding and rafters, 2 x 4 in.
Joists, Studding, and ceiling joist placed every 16 in.
Sheathing lumber. Flooring, 1-inch matched, 3 inches wide. Bevel siding. Steps for front and rear.
Roof, 1-inch lumber overlaid with best prepared roofing or shingles.



Floor Plan, Style Geneva No. 2



ALADDIN DWELLING HOUSE THE COLUMBIA

A USABLE, likable five-room house that has a generous living room across two-thirds of the front. Finished very attractively outside without running up the cost. Porch extends across entire width, and is supported by four heavy square posts. These relieved just above railing by moulding to be painted in trim color. Bed rooms together on left side, dining room and kitchen at back. Beveled siding and exposed rafters.

SPECIFICATIONS

Size, 30 x 24 ft. Price, \$627. Cash Discount, 5%. Net Price, \$595.65. See Terms.

Height of ceilings, 8 ft.

All lumber selected Yellow Pine and Huron Pine.

Sill, 6 x 6 in.

Joists, 2 x 6 in. Rafters, 2 x 4 in. Studding and ceiling joists placed every 16 in.

Sheathing lumber.

Flooring, 1-inch matched, 3 inches wide. Bevel siding.

Roof, 1-inch lumber, overlaid with best prepared roofing or shingles.

Patent plaster board or lath and plaster.

Windows, 30 x 66 in., two sliding sash, glass double strength.

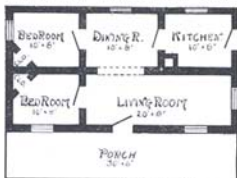
Base board and all interior trim and finish clear Yellow Pine.

Porch columns, 6 in.

Doors, outside, 2 ft. 8 in. x 6 ft. 8 in., inside, 2 ft. 8 in. x 6 ft. 8 in.

Front and rear steps.

Hardware, locks, hinges, knobs, nails, and paint for two coats inside and outside.



Floor Plan, Style Columbia



ALADDIN FOUR-ROOM DWELLING HOUSE

(Addition not included.)

THE HOPETON

THIS attractive house is a very popular design, and has found favor in all localities. It presents a composite and harmonious design, very attractive from the outside and exceptionally convenient interior. It is a square house, such as many people prefer, and interior is arranged very attractively. The special design double window in dining room, with upper sash of divided glass, makes dining room very light and attractive. Arch leads from living room to dining room, closet off bed room, and pantry off of kitchen. If desired, the dining room and living room will be supplied in one large 12x24 ft. room. This house would cost not less than \$1,200 if built by a contractor, and is worth that amount in any part of the United States.

SPECIFICATIONS

Size, 24 x 30 ft. Price, \$566. Cash Discount, 5%. Net Price, \$537.70. See Terms.

Size, 26 x 32 ft. Price, \$676. Cash Discount, 5%. Net Price, \$642.20. See Terms.

With 8 x 10 ft. addition, add \$58. With 8 x 16 ft. addition, add \$74.

With 10 x 16 ft. addition, add \$118.

Height of ceilings, 9 ft. All ceilings square, not hipped.

All lumber selected Huron Pine and Yellow Pine. Sill, 6 x 8 in.

Joists, 2 x 6 in. Studding, rafters, and ceiling joists, 2 x 4 in. Joists, studding and ceiling joist placed every 16 in.

Flooring, 1-inch matched, 3 inches wide.

Sheathing lumber.

Bevel siding.

Roof, 1-inch lumber, overlaid with best prepared roofing or shingles.

Patent plaster board or lath and 1/2 in. gyp.

Window openings, 30 x 66 in., two sliding sash, glass double strength.

Base board and all interior trim and finish clear Yellow Pine.

Porch columns, turned 6 in., with railing.

Doors, outside, 2 ft. 8 in. x 6 ft. 8 in.; front door, upper half glass. Front and rear steps.

Hardware—locks, hinges, knobs, nails, paint for two coats inside and outside.



Style H-2432

Floor Plan, Style Hopeton. 24x30



Style H-2634

Floor Plan, Style Hopeton. 26x32

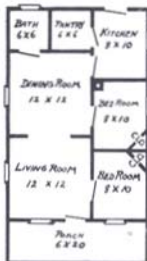


ALADDIN SIX-ROOM DWELLING HOUSE THE JERSEY

A COSY, comfortable, convenient, warm home; that exactly describes this remarkable house. It is as good a building in every sense of the word for its size as money can buy, and when erected is worth \$1,400. Note the specifications below and you will see that it is designed and built exactly like any good contractor would build it. This house can be put up and completed by two inexperienced men ready to be papered and painted in one week. This is possible because every stick is cut the right size and ready to be nailed in place, and because our instructions and drawings are so complete that no fitting, figuring, or fussing is necessary. Every piece in the house is marked to correspond with the drawings. Study the floor plan and see how conveniently the house is laid out. Note the arch between living room and dining room, large porch, etc.

SPECIFICATIONS

Jersey No. 1.	Size, 20 x 36 ft.	Price, \$571.	Cash Discount, 5%.	Net Price, \$542.45.	See Terms.
Jersey No. 2.	Size, 22 x 36 ft.	Price, \$628.	Cash Discount, 5%.	Net Price, \$596.60.	See Terms.
Jersey No. 3.	Size, 24 x 36 ft.	Price, \$680.	Cash Discount, 5%.	Net Price, \$646.00.	See Terms.
Jersey No. 4.	Size, 24 x 38 ft.	Price, \$720.	Cash Discount, 5%.	Net Price, \$684.00.	See Terms.
Jersey No. 5.	Size, 26 x 44 ft.	Price, \$892.	Cash Discount, 5%.	Net Price, \$847.40.	See Terms.



Floor Plan, Style Jersey

Height of ceilings, 9 ft. All ceilings square, not hipped.

All lumber selected Yellow Pine and Huron Pine.

Sill, 6 x 8 in.

Joists, 2 x 6 in. Studding and ceiling joists, 2 x 4 in.

Joists, studding and ceiling joists, placed every 16 in.

Flooring, 1-inch matched, 3 inches wide. Bevel siding.

Sheathing lumber. Roof, 1-inch lumber, overlaid with best prepared roofing or shingles.

Patent plaster board or lath and plaster.

Window openings, 30 x 66 in., two sliding sash, glass double strength.

Base board and all interior trim and finish clear Yellow Pine.

Porch columns, turned 6 in., with railing.

Doors, outside, 2 ft. 8 in. x 6 ft. 8 in., inside, 2 ft. 8 in. x 6 ft. 8 in.; front door, upper half glass.

Hardware, locks, hinges, knobs, nails, paint for two coats inside and outside.

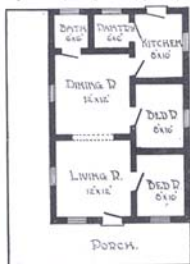


ALADDIN SIX-ROOM DWELLING HOUSE THE JEFFERSON

THIS house is practically the same as that shown on the foregoing page, except that it has porch running across the front and down one side. It is standard, one of our first designs, and has proven so popular, owing to its convenient arrangement and low price, that we have had to build it in many different sizes to meet the demands of our different customers. It evidences in a remarkable way the merit and economy of our method of construction. We show this below in five sizes.

SPECIFICATIONS

Jefferson, No. 1.	Size, 26 x 36 ft.	Price, \$653.	Cash Discount, 5%.	Net Price, \$620.35.	See Terms.
Jefferson, No. 2.	Size, 28 x 36 ft.	Price, \$710.	Cash Discount, 5%.	Net Price, \$674.50.	See Terms.
Jefferson, No. 3.	Size, 30 x 36 ft.	Price, \$752.	Cash Discount, 5%.	Net Price, \$714.40.	See Terms.
Jefferson, No. 4.	Size, 30 x 38 ft.	Price, \$803.	Cash Discount, 5%.	Net Price, \$762.85.	See Terms.
Jefferson, No. 5.	Size, 32 x 44 ft.	Price, \$974.	Cash Discount, 5%.	Net Price, \$925.30.	See Terms.



Floor Plan, Style Jefferson

All lumber selected Yellow Pine and Huron Pine.

Height of ceilings, 9 ft.

Sill, 6 x 8 in.

Joists, 2 x 6 in.

Studding, rafters, and ceiling joists, 2 x 4 in.

Joists and studding placed on 16-inch centers.

Flooring, 1-inch matched, 3 inches wide.

Sheathing lumber.

Bevel siding.

Roof, inch lumber, overlaid with best prepared roofing or shingles.

Patent plaster board or lath and plaster.

Base board and all interior trim and finish clear Yellow Pine.

Porch columns, 8 in. turned.

Window openings, 30 x 66 in., two sliding sash, glass double strength.

Doors, outside, 2 ft. 8 in. x 6 ft. 8 in., inside, 2 ft. 8 in. x 6 ft. 8 in.; front door, upper half glass.

Front and rear steps.

Hardware, locks, hinges, knobs, nails, paint for two coats inside and outside.



ALADDIN DWELLING HOUSE THE JAMESBURG

THE Jamesburg is a quaint and distinctive type of bungalow. It is practically the same in size and arrangement as The Jersey, except that it has a few embellishments in exterior design. The rafter ends under the eaves are exposed and of fancy scrolled design. A group triple window is shown in living room. Gable roof porch lends a pleasing appearance to front of house. The front door is of special design, having long panels and square divided lights at top. The porch work, columns, railing, and balusters are all very heavy.

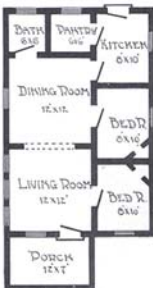
SPECIFICATIONS

Size, 20 x 37 ft.	Price, \$625.	Cash Discount, 5%.	Net Price, \$593.75.	See Terms.
Size, 22 x 37 ft.	Price, \$698.	Cash Discount, 5%.	Net Price, \$663.10.	See Terms.
Size, 24 x 37 ft.	Price, \$734.	Cash Discount, 5%.	Net Price, \$697.30.	See Terms.

Height of ceilings, 9 ft. All ceilings square, not hipped. All lumber selected Yellow Pine and Huron Pine. Sill, 6 x 8 in. Joists, 2 x 6 in. Stud-
ding and rafters, 2 x 4 in. Joists and studding placed every 16 in. Floor-
ing, 1-inch matched, 3 inches wide. Bevel siding. Sheathing lumber.
Roof, 1-inch lumber, overlaid with best prepared roofing or shingles.
Patent plaster board
or lath and plaster.
Window openings, 30
x 66 in., two sliding
sash, glass double
strength. Base board
and all interior trim and
finish clear Yellow
Pine. Porch columns,
8 inches, with railing.
Doors, outside, 2 ft. 8
in. x 6 ft. 8 in., inside,
2 ft. 8 in. x 6 ft. 8 in.;
front door, upper half
glass. Front and rear
steps. Hardware,
locks, hinges, knobs,
nails, and paint for two
coats inside and out.



The Jamesburg, showing group window in
living room



Floor Plan, Style Jamesburg



ALADDIN DWELLING HOUSE THE TUCSON

THE Tucson is positively the last word in a low-cost two-story, five-room house. It is hardly possible that a two-story house could be designed to utilize its space so economically and with such good results. The living room, opening as it does into the dining room, with a wide arch, gives a great degree of roominess. A living room, dining room, kitchen, and two bed rooms are secured in this design at a truly astonishing price for all the material for the complete house. Twenty-seven of these houses were sold to one large New York firm. Rear addition shown in photograph at bottom not included in this price. See page 88.

SPECIFICATIONS

Size, 16 x 20 ft. Price, \$575. Cash Discount, 5%. Net Price, \$546.25. See Terms.

All lumber selected Yellow Pine and Huron Pine.

Height of ceilings, 9 ft. first floor, 8 ft. second floor. Sill, 6 x 6 in.

Joists, first and second floors, 2 x 6 in., studding, rafters, and ceiling joists, 2 x 4 in. Joists and studding placed on 16-inch centers.

Flooring, 1-inch matched, 3 inches wide. Bevel siding. Sheathing lumber.

Roof, inch lumber, overlaid with best prepared roofing.

Patent plaster board or lath and plaster.

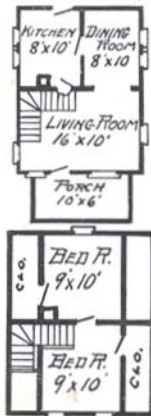
Base board and all interior trim and finish clear Yellow Pine.

Porch columns, 6 in., turned.

Window openings, 30 x 66 in., two sliding sash, double strength glass.

Doors, outside, 2 ft. 8 in. x 6 ft. 8 in., inside, 2 ft. 8 in. x 6 ft. 8 in.

Front and rear steps. Hardware, locks, hinges, knobs, nails, paint for two coats inside and outside.





ALADDIN FIVE-ROOM DWELLING HOUSE THE EDEN

ON a ground space of 20 x 20 feet this house gives more room, more comfort, more convenience than has ever before been obtained. Two stories, having two bed rooms up stairs, each with closets; a hall, a living room, a dining room, a kitchen, an open stairway, a porch, and, above all, an attractive-looking house.

Note the exterior features. A broad belt across front of house; diamond-paned single-sash window in hall over stairway; double diamond-paned window in dining room. A wide window fronts the house in living room. Handsome 8-inch turned porch column with cap and base is an attractive feature of the porch.

The Eden is also furnished with bath room on second floor. This is secured by including a dormer window on one side, taking no space from bed rooms. Price, with bath room, \$38 extra.

Two men erected and completed this house in exactly six days at Bay City. It can be done by any two men who are willing to work, assisted by our complete instructions and illustrations.

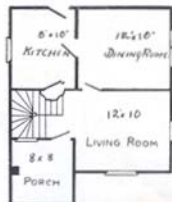
SPECIFICATIONS

Size, 20 x 20 ft. Price, \$628. Cash Discount, 5%. Net Price, \$596.60. See Terms.

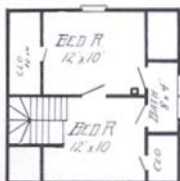
All lumber selected Yellow Pine and Huron Pine. Height of ceilings, 9 ft. first floor, 8 ft. second floor. Sill, 6 x 6 in. Joists, first and second floors, 2 x 6 in., studding, rafters, and ceiling joists, 2 x 4 in. Joists, and studding placed on 16-inch centers. Sheathing lumber. Flooring, 1-in. matched, 3 in. wide. Bevel siding. Roof, inch lumber, overlaid with best prepared roofing (or shingles). Patent plaster board or lath and plaster. Base board and all interior trim and finish clear Yellow Pine. Porch columns, 8 in. turned. Window openings, 30 x 66 in., two sliding sash, double strength glass. Doors, outside, 2 ft. 8 in. x 6 ft. 8 in., inside, 2 ft. 8 in. x 6 ft. 8 in.; front door, upper half glass. Front and rear steps. Hardware, locks, hinges, knobs, nails, paint for two coats inside and outside.



Second Floor Plan, Style Eden



First Floor Plan, Style Eden



The Eden, with Bath Room



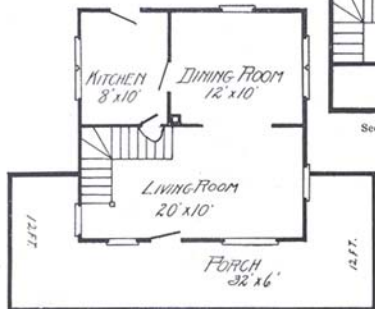
ALADDIN DWELLING HOUSE THE NEWTON

THE Newton is really an Eden with the attractive Newport porch, although it has considerably more room than the regular Eden. You will note that the porch is 32 feet long and 12 feet deep at ends. Pillared arch is furnished between living and dining room, and bath room on second floor.

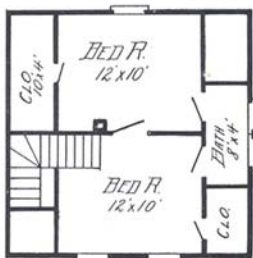
SPECIFICATIONS

The Newton. Size, 20 x 26 ft. Price, \$726. Cash Discount, 5%. Net Price, \$689.70. See Terms.

All lumber selected Yellow Pine and Huron Pine. Height of ceilings, 9 ft. first floor; 8 ft. second floor. Sill, 6 x 6 in. Joists, first and second floors, 2 x 6 in., studding, rafters, and ceiling joists, 2 x 4 in. Joists and studding placed on 16-inch centers. Flooring, 1-inch matched, 3 inches wide. Roof, inch lumber, overlaid with best prepared roofing (or shingles). Sheathing lumber.



First Floor Plan, Style Newton



Second Floor Plan, Style Newton

Bevel siding. Patent plaster board or lath and plaster. Base board and all interior trim and finish clear Yellow Pine. Porch columns, 6 in. turned. Window openings 30 x 66 in., two sliding sash, double strength glass. Doors, outside, 2 ft. 8 in. x 6 ft. 8 in.; inside, 2 ft. 8 in. x 6 ft. 8 in.; front door, upper half glass. Front and rear steps. Hardware, locks, hinges, knobs, nails, paint for two coats inside and outside.



ALADDIN DWELLING HOUSE THE ELGIN

THE Elgin is a thoroughly practical and modern six-room house. It has several desirable features particularly worthy of consideration. The living room is of the alcove type, roomy and well lighted. Semi-open stairway with cellar entrance is conveniently placed. The small rear addition forms both bath room and covered porch. Three bed rooms, closets, and hall are laid out advantageously on the second floor. The house is especially adapted for a narrow city lot, having a frontage of 20 ft.

SPECIFICATIONS

Size, 20 x 34 ft. (exclusive of front porch).
Price, \$798. Cash Discount, 5%. Net
Price, \$758.10. See Terms.

All lumber selected Yellow Pine and Huron Pine. Height of ceilings, 9 ft. first floor; 8 ft. second floor.

Sill, 6 x 6 in.

Joists, first floor, 2 x 8 in., and second floor, 2 x 6 in.

Studding, rafters, and ceiling joists, 2 x 4 in.

Joists and studding placed on 16-inch centers.

Flooring, 1-inch matched, 3 inches wide. Bevel siding. Sheathing lumber.

Roof, inch lumber, overlaid with best prepared roofing (or shingles).

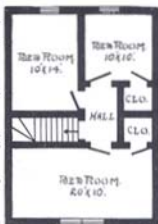
Patent plaster board or lath and plaster.

Base board and all interior trim and finish clear Yellow Pine. Porch columns, 6-inch turned.

Window openings, 30 x 66 in., two sliding sash, double strength glass.



First Floor Plan, Style
Elgin



Second Floor Plan, Style
Elgin

Doors, outside, 2 ft. 8 in. x 6 ft. 8 in.; inside, 2 ft. 8 in. x 6 ft. 8 in.; front door, upper half glass.

Front and rear steps.

Hardware, locks, hinges, knobs, nails, paint for two coats inside and outside.



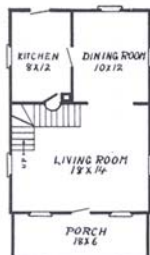


ALADDIN SIX-ROOM DWELLING HOUSE THE FINLEY

THE Finley is a remarkably low-price house for its size. It is, however, a very neat six-room house. The living room is 14 x 18 ft., and an attractive open stairway is in the rear of this room. A 10 x 12 ft. dining room and an 8 x 12 ft. kitchen make up the balance of the first floor, while three bed rooms and closet are up stairs. This house can be erected by two men in eight days.

SPECIFICATIONS

Size, 18 x 32 ft. Price, \$787. Cash Discount, 5%. Net Price, \$747.65. See Terms.



First Floor Plan, Style
Finley

All lumber selected Yellow Pine and Huron Pine.
Height of ceilings, 9 ft. first floor, 8 ft. second floor.
Sill, 6 x 6 in.

Joists, first floor, 2 x 6 in.; second floor, 2 x 6 in.; studding, rafters, and ceiling joists, 2 x 4 in.

Joist and studding placed on 16-inch centers.
Sheathing lumber. Flooring, 1-inch matched, 3 inches wide. Bevel siding.

Roof, inch lumber, overlaid with best prepared roofing (or shingles).

Patent plaster board or lath and plaster.

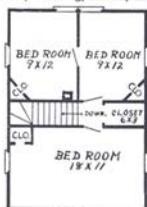
Base board and all interior trim and finish clear Yellow Pine.

Window openings, 30 x 66 in., two sliding sash, double strength glass.

Doors, outside, 2 ft. 8 in. x 6 ft. 8 in., inside, 2 ft. 8 in. x 6 ft. 8 in.; front door, upper half glass.

Front and rear steps.

Hardware, locks, hinges, knobs, nails, paint for two coats inside and outside.



Second Floor Plan, Style
Finley



ALADDIN DWELLING HOUSE THE AUGUSTA

FOR the average family the Augusta will be a home in every sense of the word. Every room in the entire house is conveniently arranged so that they all open direct into the halls up stairs and down. Every room has plenty of light and each bed room is furnished with a good-sized closet. The small room at the head of the stairs can be used either as a sewing room or den. The exterior appearance of the house shows up even better than the cut. This house when painted, and finished attractively will be a revelation to you, in that a house of this character can be erected and completed at such a low cost.

SPECIFICATIONS

Size, 20 x 24 (exclusive of porch). Price, \$840. Cash Discount, 5%. Net Price, \$798. See Terms.



First Floor Plan, Style
Augusta

Height of ceilings, 9 ft. first floor; 8 ft. second floor.

All lumber selected Yellow Pine and Huron Pine.

Sill, 6 x 8 in.

Joists, 2 x 8 in. Studding, rafters, and ceiling joists, 2 x 4 in.

Sheathing lumber.

Flooring, 1-inch matched, 3 inches wide.

Bevel siding.

Roof, inch lumber, overlaid with best prepared roofing or shingles.

Patent plaster board or lath and plaster.

Base board and all interior trim and finish clear Yellow Pine.

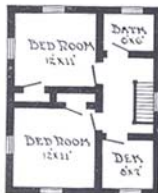
Porch columns, 8 in., with railing.

Windows, 30 x 66 in., two sliding sash, glass double strength.

Doors, outside, 2 ft. 8 in. x 6 ft. 8 in., inside, 2 ft. 8 in. x 6 ft. 8 in.; front door, upper half glass.

Front and rear steps.

Hardware, locks, hinges, knobs, nails, and paint for two coats inside and outside.



Second Floor Plan, Style
Augusta



ALADDIN TEN-ROOM DWELLING HOUSE THE THORNDALE

THE photograph, the floor plan, and the price are all that need be called to your attention in showing you this remarkable The Thorndale. What more can be added in its favor? A ten-room house at this price! And yet if you haven't use for so many rooms, we will furnish the house leaving out the partition between the two down stairs bed rooms, making a 10 x 16 ft. living room, or if you wish at least one large bed room up stairs, we will leave out partition between any two rooms. These changes will not change the price. This house is a big seller.

SPECIFICATIONS

Size, 30 x 24 ft. Price, \$829. Cash Discount, 5%. Net Price, \$787.55. See Terms.

All lumber selected Yellow Pine and Huron Pine. Height of ceilings, 9 ft. first floor; 8 ft. second floor. Sill, 6 x 6 in.

Joists, first floor, 2 x 6 in.; second floor, 2 x 6 in.; studding, rafters, and ceiling joists, 2 x 4 in.

Joists and studding placed on 16-inch centers. Flooring, 1-inch matched, 3 inches wide. Bevel siding.

Sheathing lumber. Roof, inch lumber, overlaid with best prepared roofing (or shingles).

Patent plaster board or lath and plaster.

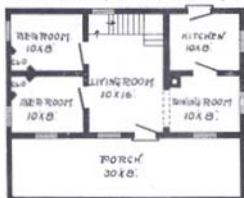
Base board and all interior trim and finish clear Yellow Pine.

Window openings, 30 x 66 in., two sliding sash, double strength glass.

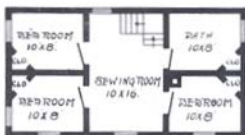
Doors, outside, 2 ft. 8 in. x 6 ft. 8 in., inside, 2 ft. 8 in. x 6 ft. 8 in.; front door, upper half glass.

Front and rear steps.

Hardware, locks, hinges, knobs, nails, and paint for two coats inside and outside.



First Floor Plan, Style Thorndale



Second Floor Plan, Style Thorndale



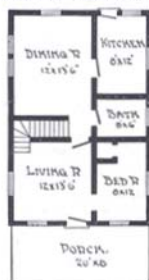
ALADDIN DWELLING THE HUGHES

WE show in the Hughes one of those well-arranged story-and-a-half houses that are so popular nowadays. Building in this manner makes it possible to utilize every inch of available space to the best possible advantage at a low cost. A glance at the floor plans and the price of the Hughes must convince you of the truth of this statement. And not only is the house conveniently arranged, but the attractive porch and shingled gables make a very pretty effect. If you are looking for a house of this kind you cannot possibly improve upon the Hughes.

SPECIFICATIONS

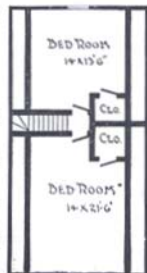
Size, 30 x 38 ft. Price, \$946. Cash Discount, 5%. Net Price, \$898.70. See Terms.

All lumber selected Yellow Pine and Huron Pine. Height of ceilings, 9 ft. first floor, 8 ft. second floor.



Floor Plan, Style Hughes

Sill, 6 x 8 in.
Joists, first floor, 2 x 8 in. and second floor, 2 x 6 in.
Studding, rafters, and ceiling joists, 2 x 4 in.
Joists and studding placed on 16-inch centers.
Flooring, 1-inch matched, 3 inches wide.
Bevel siding.
Sheathing lumber.
Roof, inch lumber, overlaid with best roofing or shingles.
Patent plaster board or lath and plaster.
Base board and all interior trim and finish clear Yellow Pine.
Porch columns, 6 in. turned.
Windows, 30 x 66 in., two sliding sash, double strength glass.
Doors, outside, 2 ft. 8 in. x 6 ft. 8 in., inside, 2 ft. 8 in. x 6 ft. 8 in.; front door, upper half glass.
Front and rear steps.
Hardware, locks, hinges, knobs, nails, and paint for two coats inside and outside.



Floor Plan, Style Hughes



ALADDIN DWELLING HOUSE THE PORTLAND

FOUR gables give the Portland a surprising amount of room on its second floor. Large front room, two rear bed rooms, bath and linen closet are secured with this excellent roof design. On the first floor a twenty-foot living room extends across the full front of the house, arch leads to dining room, and good kitchen, pantry, and inset rear porch are arranged. The porch railing is of the full length square spindle type and columns set on pedestals. Attractive group window fronts the upper part of the house, and the gable is furnished with shingles.

SPECIFICATIONS

Size, 20 x 38 ft. Price, \$839. Cash Discount, 5%.
Net Price, \$797.05. See Terms.

Height of ceilings, 9 ft. first floor; 8 ft. second floor.
All lumber selected Yellow Pine and Huron Pine.

Sill, 6 x 8 in.

Studding, 2 x 4 in.

Joists, 2 x 8 in. down and 2 x 8 in. up stairs.

Joists and studding placed every 16 in.

Flooring, 1-inch matched, 3 inches wide.

Sheathing lumber. Bevel siding.

Roof, 1-inch lumber, overlaid with shingles.

Patent plaster board or lath and plaster.

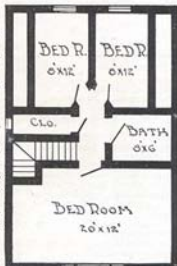
Doors, outside, 2 ft. 8 in. x 6 ft. 8 in.; inside, 2 ft. 8 in. x 6 ft. 8 in.; front door, upper half glass.

Windows, 30 x 66 in., two sliding sash, double strength glass. One special group of windows.

Hinges, locks, hinges, knobs, and paint for two coats inside and outside.



First Floor Plan, Style Portland



Second Floor Plan, Style Portland



ALADDIN DWELLING THE BRISTOL

HERE is one of the most popular styles of houses that has ever been designed. The reason for this popularity is easy to determine. First, the exterior is architecturally harmonious — the roof being an integral part of the whole and lending a distinct feature to the design. At the same time this roof permits of extraordinary utility in the second-story arrangements — lots of room. It secures almost a full second story with the roof really set on the first story. Our arrangement of rooms in the Bristol is particularly worthy of notice. Excellent reception room, 12 x 13 ft. with open stairway of paneled design, big living room, and dining room with attractive arches. Grade entrance at the left conveniently reached from kitchen or front of hall. Good pantry and rear vestibule are also shown. It would be very difficult to improve this house in any way.



Floor Plan, Style Bristol



Floor Plan, Style Bristol

SPECIFICATIONS

Size, 24 x 32 (exclusive of porch). Price, \$1,352. Cash Discount, 5%. Net Price, \$1,189.40. See Terms.

Height of ceiling, 9 ft. first floor; 8 ft. second floor.
All lumber selected Yellow Pine and Huron Pine.
Sill, 6 x 8 in.
Studding, 2 x 4 in. Rafters and ceiling joists, 2 x 4 in.
Joists, 2 x 8 in. down and 2 x 8 in. up stairs.
Flooring, 1-inch matched, 3 inches wide. Sheathing lumber.
Joists and studding placed every 16 in.
Roof, 1-inch lumber, overlaid with shingles.
Patent plaster board or lath and plaster.
Doors, outside, 2 ft. 8 in. x 6 ft. 8 in.; inside, 2 ft. 8 in. x 6 ft. 8 in.; front door, three-quarter length glass.
Windows, 30 x 66 in., two sliding sash, double strength glass.
Base board and all interior finish clear Yellow Pine.
Front and rear steps.
Complete instructions and illustrations for erecting.
All hardware, locks, hinges, knobs, nails, and paint for two coats inside and outside.



Aladdin Automobile Garages



ALADDIN AUTO HOUSE No. 3 AND No. 4.

No. 3 Aladdin Auto House—Size 16 x 20 feet. Designed for two touring cars, with ample room for accessories, tools, etc. At the price we quote it is a very remarkable house—harmonious in design, strong and substantial. You cannot equal it anywhere. Has large double paneled door in front with large window, and door and window in rear of house. Front door runs on best grade track and easily. Is perfect in every way for use in housing two touring cars.

Price, complete throughout\$200

No. 4 Aladdin Auto House—Size 20 x 20 feet, joists 2 x 6; three sills run lengthwise and two across ends; roof inch lumber overlaid with best prepared roofing; size of large door 8 x 9 feet; paneled door in rear, size 2 ft. 6 in. x 6 ft. 8 in; windows in front and rear size 26 x 60 inches, two sliding sash; runway 2-inch plank. Front door on best grade tracks.

Price\$240

The North American Construction Co. has never had a complaint from the purchaser of an Aladdin house. This is a remarkable record and testifies fully to the excellence of material, economy of construction, and our careful, thorough business methods.

We supply paint for body and trimming of these garages in any color specified, so that when finished they will harmonize with surroundings.



ALADDIN DWELLING HOUSE THE WOODWARD

THIS particular type is very popular in all sections. It presents a handsome exterior from either front, side, or rear, being compact, well proportioned, and of strictly modern design. Grouped square columns set upon pedestals support the main roof in front while the rear roof is carried out to form a porch, pantry, and cellar entrance. Note the wide projecting eaves supported by brackets. The interior has three bed rooms, bath, and good sized living room, dining room, with open stairway and kitchen with pantry.

SPECIFICATIONS

Size, 26 x 36 ft. Price, \$1,108. Cash Discount, 5%. Net Price, \$1,052.60. See Terms.

Height of ceilings, 9 ft.; second floor, 8 ft.
All lumber selected Yellow Pine and Huron Pine.
Sill, 6 x 8 in.
Joists, 2 x 8 in. first floor; 2 x 6 in. second floor. Studding, rafters, and ceiling joists, 2 x 4 in.
Joists and studding placed every 16 in.
Flooring, 1-inch matched, 3 inches wide.
Roof, 1-inch lumber, overlaid with shingles.
Bevel siding. Sheathing lumber.
Patent plaster board or lath and plaster.
Windows, 30 x 66 in., two sliding sash, glass double strength.
Base board and all interior trim and finish clear Yellow Pine.
Porch columns square, with railing.
Doors, outside, 2 ft. 8 in. x 6 ft. 8 in., inside, 2 ft. 8 in. x 6 ft. 8 in.; front door, special design.

Front and rear steps.
Hardware, locks, hinges, knobs, nails, paint for two coats inside and outside.

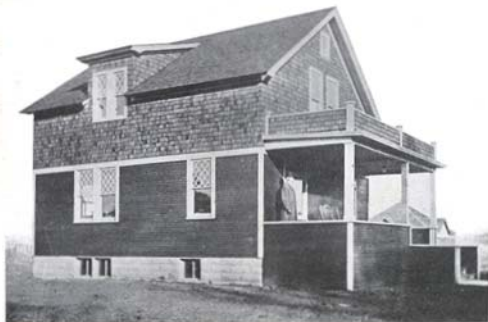


Floor Plan, Style
Woodward



Floor Plan, Style
Woodward





ALADDIN DWELLING HOUSE THE HAMILTON

THIS is a very popular type of house in the smaller cities. It is of the half-shingled style, with a gable roof, porch, and split roof dormer. It is one of the simplest and easiest to build of any of our two-story designs. The living room is of generous dimensions, 12 x 16 ft., and open stairway at the rear. Living room, parlor, dining room, kitchen, and pantry are down stairs, and three bed rooms with closets and bath are up stairs.

SPECIFICATIONS

Size, 24 x 36 ft. Price, \$1,098. Cash Discount, 5%. Net Price, \$1,043.10. See Terms.

Height of ceiling, 9 ft. first floor; 8 ft. second floor.

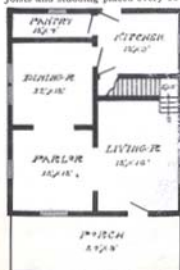
All lumber selected Yellow Pine and Huron Pine.

Sill, 6 x 8 inches.

Studding, 2 x 4 in. Rafter and ceiling joists, 2 x 4 in.

Joists, 2 x 8 inches down and 2 x 6 in. up stairs.

Joists and studding placed every 16 in.



First Floor Plan, Style Hamilton

Sheathing lumber. Siding first story, shingles second story. Floor-

ing, 1-inch matched, 3 inches wide.

Roof, 1-inch lumber, overlaid with shingles.

Patent plaster board or lath and plaster.

Doors, outside, 2 ft. 8 in. x 6 ft.

8 in., inside, 2 ft. 8 in. x 6 ft.

8 in.; front door, upper half

glass.

Windows, 30 x 66 in., two

sliding sash, double strength

glass.

Front window opening, size

48 x 66 in.

Base board and all interior fin-

ish clear Yellow Pine.

Front and rear steps.

Complete instructions and

illustrations for erecting.

All hardware, locks, hinges,

knobs, nails, and paint for

two coats inside and out-

side.



Second Floor Plan, Style Hamilton

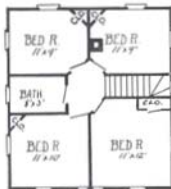


ALADDIN DWELLING HOUSE

THE ADDISON



First Floor Plan, Style Addison



Second Floor Plan, Style Addison

SEVERAL different features are incorporated in the design of the Addison not shown in our many other styles. It is a big, square, sensibly-designed house with finished details to lend a pleasing appearance. The porch work is especially attractive, all posts being paneled, the frieze being embellished with dentals and attractive mouldings. The porch rail may be either enclosed or open, as preferred. Light is given to the roomy attic by the neat dormer window. Wide front windows and handsome front door are noticed. Inside are shown living room, with open paneled stairway, dining room, pantry, kitchen, and four bed rooms and bath.

SPECIFICATIONS

Size, 22 x 32 ft. Price, \$1,045. Cash Discount, 5%. Net Price, \$992.75. See Terms.

Height of ceiling, 9 ft. first floor; 8 ft. second floor. All lumber selected Yellow Pine and Huron Pine. Sill, 6 x 8 in. Studding, 2 x 4 in. Rafters and ceiling joists, 2 x 4 in. Joists, 2 x 8 in. down and 2 x 6 in. up stairs. Joists and studding placed every 16 in. Flooring, 1-inch matched, 3 inches wide. Sheathing lumber. Roof, 1-inch lumber, overlaid with shingles. Siding first story, shingles second story. Patent plaster board or lath and plaster. Doors, outside, 2 ft. 8 in. x 6 ft. 8 in., inside, 3 ft. 8 in. x 6 ft. 8 in.; front door, upper half glass. Windows, 30 x 66 in., two sliding sash, double strength glass. Front window openings, 48 x 66 in. Base board and all interior finish clear Yellow Pine. Front and rear steps. Complete instructions and illustrations for erecting. All hardware, locks, hinges, knobs, nails, and paint for two coats inside and outside.





ALADDIN DWELLING HOUSE THE HUDSON

NO comment on our part is needed to convince you of the many attractive features of the Hudson. Every need in a modern and up-to-date home is afforded by this design, with its large living room, dining room, kitchen, pantry, hall, clothes closet, four bed rooms, bath and closets. It seems hardly possible to secure more room, more space, or more convenience in 24 x 36 ground space. Note grade cellar entrance at side.

SPECIFICATIONS

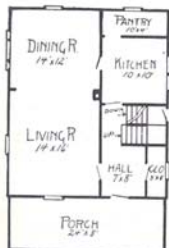
Size, 24 x 36 ft. Price, \$1,142. Cash Discount, 5%. Net Price, \$1,084.90. See Terms.

Height of ceiling, 9 ft. first floor; 8 ft. second floor.

All lumber selected Huron Pine and Yellow Pine.

Sill, 6 x 8 inches.

Studding and ceiling joists, 2 x 4 in.



First Floor Plan, Style Hudson

Joists, 2 x 8 in. down and 2 x 6 in. up stairs.

Joists and studding placed every 16 in.

Flooring, 1-inch matched, 3 inches wide. Sheathing lumber. Bevel Siding.

Roof, 1-inch lumber, overlaid with shingles.

Patent plaster board or lath and plaster.

Doors, 2 ft. 8 in. x 6 ft. 8 in.; front door, upper half glass.

Windows, 30 x 66 in., two sliding sash, double strength glass.

Base boards and all interior trim and finish clear Yellow Pine.

Front and rear steps.

Complete instructions and illustrations for erecting.

All hardware, locks, hinges, knobs, nails, and paint for two coats inside and outside.



Second Floor Plan, Style Hudson



ALADDIN DWELLING HOUSE THE STANDARD

IF you like a square house, the Standard will surely appeal to you as one of the handsomest you have seen. A broad belt runs around the house just under the upper windows, and the decorative plan calls for dark-colored paint above this belt and light below, or the reverse. Exposed scrolled rafter ends are shown under the eaves, which flare straight out; good heavy porch pillars, large triple windows in front, full length porch railing, reaching to ground—these are each and every one distinctly desirable attractions. Has grade entrance.

SPECIFICATIONS

Size, 22 x 30 ft. Price, \$1,146. Cash Discount, 5%. Net Price, \$1,088.70. See Terms.



First Floor Plan, Style Standard

Height of ceilings, 9 ft. first floor; 8 ft. second floor.
All lumber selected Yellow Pine and Huron Pine.
Sill, 6 x 8 in.
Studding and ceiling joists, 2 x 4 in.
Joists, 2 x 8 in. down and 2 x 6 in. up stairs.
Joists and studding placed every 16 in.
Sheathing lumber.
Flooring, 1-inch matched, 3 inches wide.
Roof, 1-inch lumber, overlaid with shingles. Bevel siding.
Patent plaster board or lath and plaster.
Doors, 2 ft. 8 in. x 6 ft. 8 in.; front door, upper half glass.
Windows, 30 x 66 in., two sliding sash, double strength glass.
Base boards and all interior trim and finish clear Yellow Pine.
Front and rear steps.
Complete instructions and illustrations for erecting.
All hardware, locks, hinges, knobs, nails, and paint for two coats inside and outside.



Second Floor Plan, Style Standard



ALADDIN DWELLING HOUSE THE CHARLESTON

TWO-STORY modern type. First noticeable feature is the deep bays in front, both stories, also on one side. These give free sight in all directions, and ample light, has double front dormer window in roof. All walls of siding. Three round porch columns. A good, substantial, roomy house, with four good bed rooms on second floor.

SPECIFICATIONS

Size, 28 x 33 ft. (exclusive of porch). Price, \$1,340. Cash Discount, 5%. Net Price, \$1,273. See Terms.

Height of ceilings, 9 ft. first floor, 8 ft. second floor.

All lumber selected Yellow Pine and Huron Pine.

Sill, 6 x 8 in.

Rafters and ceiling joists, 2 x 4 in.

Studding, 2 x 4 in.

Joists, 2 x 8 in. down and

2 x 8 in. up stairs.

Joists and studding placed every 16 in.

Sheathing lumber.

Bevel siding.

Flooring, 1-inch matched, 3 inches wide.

Roof, 1-inch lumber, overlaid with shingles.

Patent plaster board or lath and plaster.

Doors, outside, 2 ft. 8 in. x 6 ft. 8 in., inside, 2 ft. 8 in. x 6 ft. 8 in.; front door, upper half glass.

Windows, 30 x 66 in., two sliding sash, double strength glass.

Base board and all interior finish clear Yellow Pine.

Front and rear steps.

Complete instructions and illustrations for erecting.

All hardware, locks, hinges, knobs, nails, and paint for two coats inside and outside.



Floor Plan, Style Charleston



Floor Plan, Style Charleston



ALADDIN DWELLING HOUSE THE KINGSTON

THIS square type of house offers you one of the greatest values in modern house construction. Every available inch of space is utilized to its full capacity. A glance at the floor plan will immediately convince you that the arrangement of rooms could not be bettered. The break in the dining room which also extends up stairs into bed room, can be fitted around with window seat or made attractive in various other ways. In making a selection of this substantial house you will have a home that will stand out in any neighborhood where it may be erected. Its wide projecting eaves and full length porch, together with the exterior finished half in siding and half in shingling are features when finished attractively that cannot but be noticed and admired. Cellar entrance under main stairs.

SPECIFICATIONS

Size, 30 x 38 ft. Price, \$7,534. Cash Discount, 5%. Net Price, \$7,157.30. See Terms.

Height of ceilings, 9 ft. first floor, 8 ft. second floor.

All lumber of selected Yellow Pine and Huron Pine.

Sill, 6 x 8 in.

Studding, 2 x 4 in. Rafters and ceiling joists, 2 x 4 in.

Joists, 2 x 8 in. down, and 2 x 8 in. up stairs. Joists and studding placed every 16 in.

Flooring, 1-inch matched, 3 inches wide.

Roof, 1-inch lumber, overlaid with shingles.

Patent plaster board or lath and plaster.

Side walls, sheathing, siding and shingles.

Doors, 2 ft. 8 in. x 6 ft. 8 in.; front door, special.

Windows, 30 x 66 in., two sliding sash, double strength glass.

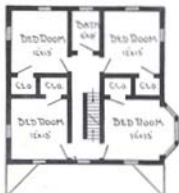
Front and rear steps.

Base board and all interior trim and finish clear Yellow Pine.

Hardware, locks, hinges, knobs, nails, and paint for two coats inside and outside.



First Floor Plan, Style Kingston



Second Floor Plan, Style Kingston



ALADDIN DWELLING HOUSE THE SALEM

A NEW, square town-house, similar to our popular "Standard." Inside arrangement conforms to the same square plan. Roomy porch is built-up solid, with siding from ground to railing. Two vents or scuppers. Three round columns rest on square pillars that nicely ornament the porch construction. First story has siding walls and upper sidewalls of shingles. Large windows afford plenty of light. This house has four bed rooms.

SPECIFICATIONS

Size, 28 x 30 ft. Price, \$1,498. Cash Discount, 5%. Net Price, \$1,423.20. See Terms.

Height of ceilings, 9 ft. first floor; 8 ft. second floor.

All lumber selected Yellow Pine and Huron Pine.

Sill, 6 x 8 in.

Studding and ceiling joists, 2 x 4 in.

Joists, 2 x 10 in. down and 2 x 8 in. up stairs.

Joists and studding placed every 16 in.

Flooring, 1-inch matched, 3 inches wide.

Side walls, sheathing and siding first story, sheathing and shingles second story.

Roof, 1-inch lumber, overlaid with shingles.

Patent plaster board or lath and plaster.

Doors, 2 ft. 8 in. x 6 ft. 8 in.; front door, upper half glass.

Windows, 30 x 66 in., two sliding sash, double strength glass.

Base board and all interior trim and finish clear Yellow Pine.

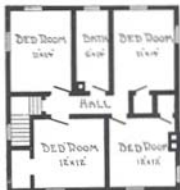
Front and rear steps.

Complete instructions and illustrations for erecting.

All hardware, locks, hinges, knobs, nails, and paint for two coats inside and outside.



Floor Plan, Style Salem



Floor Plan, Style Salem



ALADDIN DWELLING HOUSE THE OREGON

THE Oregon is a highly practical design, wonderfully popular and successful. It creates the most favorable comment wherever erected. It is simple and dignified in exterior appearance and most convenient in interior arrangement. Good-sized living room and dining room, with bed room and kitchen, are arranged on first floor, with three bed rooms and bath up stairs, making four bed rooms in all. Paneled, open stairway is a good feature of living room.

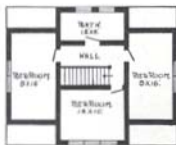
SPECIFICATIONS

Size, 30 x 24 ft. Price, \$1,340. Cash Discount, 5%.
Net Price, \$1,273. See Terms.

Height of ceilings, 9 ft. first floor; 8 ft. second floor.
All lumber selected Yellow Pine and Huron Pine.
Sill, 6 x 8 in.
Studding, 2 x 4 in. Joists, 2 x 8 in. down and 2 x 8 in. up stairs.
Lumber sheathing. Bevel siding.
Joists, and studding placed every 16 in.
Flooring, 1-inch matched, 3 inches wide.
Roof, 1-inch lumber, overlaid with shingles.
Patent plaster board or lath and plaster.
Doors, outside, 2 ft. 8 in. x 6 ft. 8 in., inside, 2 ft. 8 in. x 6 ft. 8 in.; front door, upper half glass.
Windows, 30 x 66 in., two sliding sash, double strength glass.
Hardware, locks, hinges, knobs, nails, and paint for two coats inside and outside.

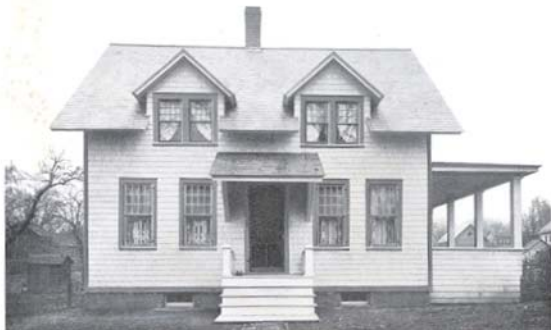


Floor Plan, Style Oregon



Floor Plan, Style Oregon





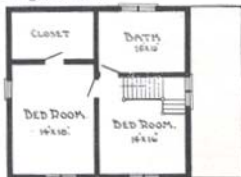
ALADDIN DWELLING HOUSE THE MAYWOOD

THE Maywood gives the advantages of the side porch as found on so many of the large and modern houses. Entrance is had to this porch from door in the dining room. The hooded front entrance is a novel feature, which with the front dormer windows gives a very attractive appearance. The interior is excellently arranged, having large living room, with open stairway, while excellent pantry is shown from kitchen. The second story can really be utilized for three bed rooms and bath, although the floor plan as shown has the 16 x 10 ft. room as bath. The exterior is shingled all over.

SPECIFICATIONS

Size, 38 x 36 ft. (exclusive of porch). Price, \$1,120. Cash Discount, 5%. Net Price, \$1,064. See Terms.

Height of ceiling, 9 ft. first floor; 8 ft. second floor.
All lumber selected Yellow Pine and Huron Pine.
Sill, 6 x 8 in. Studding, 2 x 4 in. Sheathing lumber.
Joists, 2 x 8 in. down and 2 x 8 in. up stairs.
Joists and studding placed every 16 in.
Flooring, 1-inch matched, 3 inches wide. Side walls shingles.
Roof, 1-inch lumber, overlaid with shingles.
Patent plaster board or lath and plaster.
Doors, outside, 2 ft. 8 in. x 6 ft. 8 in., inside, 2 ft. 8 in. x 6 ft. 8 in.; front door, special.
Windows, 30 x 66 in., two sliding sash, double strength glass.
Base boards and all interior trim and finish clear Yellow Pine. Front and rear steps.
Complete instructions and illustrations for erecting.
All hardware, locks, hinges, knobs, nails, and paint for two coats inside and outside.



Second Floor Plan, Style Maywood



First Floor Plan, Style Maywood





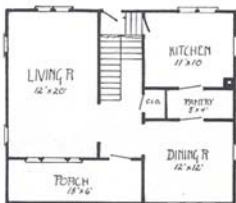
THE ALADDIN DWELLING THE BIRMINGHAM

THE Birmingham has the shingled gables with siding on first story, split roof dormer with group of four windows, especially designed; divided light windows, small windows in side of living room for over fireplace (although full-sized windows will be furnished if desired). Large living room with arches from it and dining room into hall; three large bed rooms and closets and bath — all the desirable things needed to make a real home. It would be impossible to get more beauty, comfort, and convenience into a house of this size.

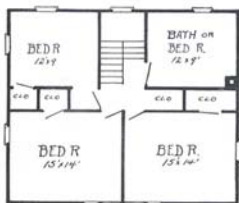
SPECIFICATIONS

Size, 30 x 26 ft. Price, \$1,470. Cash Discount, 5%. Net Price, \$1,396.50. See Terms.

Height of ceiling, 9 ft. first floor, 8 ft. second floor. All lumber selected Yellow Pine and Huron Pine. Sill, 6 x 8 in. Studding, 2 x 4 in. Rafters and ceiling joists, 2 x 6 in. Joists, 2 x 8 in. down and 2 x 8 in. up stairs. Joists and studding placed every 16 in. Sheathing lumber. Flooring, 1-inch matched, 3 inches wide. Bevel siding. Roof, 1-inch lumber, overlaid with shingles. Patent plaster board or lath and plaster. Doors, 2 ft. 8 in. x 6 ft. 8 in.; front door, heavy oak, glazed. Windows, 30 x 66 in., two sliding sash, double strength glass. Front and rear steps. Base boards and all interior trim and finish clear Yellow Pine. Hardware, locks, hinges, knobs, nails, and paint for two coats inside and outside.



First Floor Plan, Style Birmingham



Second Floor Plan, Style Birmingham

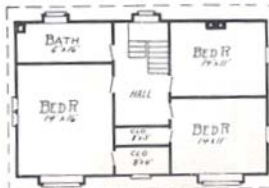


ALADDIN DWELLING HOUSE THE FLANDERS

THE Flanders is a type of architecture that is becoming decidedly popular throughout the country. It is a modification of the Dutch-Colonial, rugged in outline, expressing its individuality in pleasing details, and offering the very greatest degree of room and convenience with the above features. Large living room with window seat, deep hall, attractive staircase, dining room, kitchen and pantry are on first floor, while large bed room, bath, closet, with window, and two extra bed rooms make up second floor.



First Floor Plan, Style Flanders



Second Floor Plan, Style Flanders

SPECIFICATIONS

Size, 22 x 36 ft. Price, \$1,680. Cash Discount, 5%.
Net Price, \$1,596. See Terms.

Height of ceilings, 9 ft. first floor; 8 ft. second floor. All lumber of selected Yellow Pine and Huron Pine. Sill, 6 x 8 in. Studding, 2 x 4 in. Rafters and ceiling joists, 2 x 6 in. Joists, 2 x 8 in. down, and 2 x 8 in. up stairs. Joists and studding placed every 16 in. Sheathing lumber. Flooring, 1-inch matched, 3 inches wide. Roof, 1-inch lumber, overlaid with shingles. Patent plaster board or lath and plaster. Doors, 2 ft. 8 in. x 6 ft. 8 in.; front door, heavy oak, glazed. Windows, 30 x 66 in., two sliding sash, double strength glass. Front and rear steps. Base board and all interior trim and finish clear Yellow Pine. Hardware, locks, hinges, knobs, nails, and paint for two coats inside and outside.





ALADDIN DWELLING THE BRENTWOOD

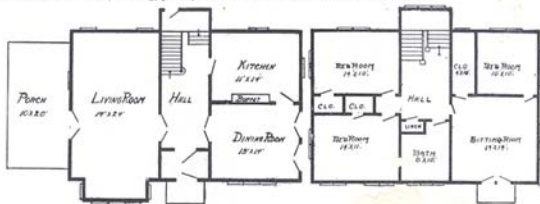
THIS most charming dwelling has a host of admirers. Its individuality is apparent in many ways. The broken roof, second story balcony, hooded front entrance, semi-enclosed porch, pergola porte cochere with French doors leading to dining room, casement windows, and full attic, form a delightfully attractive whole. The house will be furnished with either siding, shingles, or stucco exterior. The bay window projects three feet and is ten feet wide. The pergola at the side is furnished with tin roof, giving protection against snow and rain. This pergola can be furnished with floor, giving a side veranda instead of porte cochere.

Note the sleeping room leading from sitting or dressing room on second floor. This gives all the advantages of the sleeping porch, with none of its inconveniences, this sleeping room having four windows. Linen closet is arranged in hall, a very large closet from the sitting room, and each bed room has a closet. The hall, both first and second story, is commodious, while a stairway of pure Colonial type is furnished. Built-in buffet in dining room affords room for dishes, linen, and silver.

SPECIFICATIONS

Size, 36 x 24 ft. (exclusive of porches). Price, \$2,100. Cash Discount, 5%.
Net Price, \$1,995. See Terms.

Height of ceilings, 9 ft. first floor; 8 ft. second floor. All lumber selected Yellow Pine and Huron Pine. Sill, 6 x 8 in. Studding, 2 x 4 in. Rafters, 2 x 6 in. Joists, first and second floor, 2 x 10 in.; attic, 2 x 6 in. Joist and studding on 16-inch centers. Flooring, 1-inch matched, 3 inches wide. Roof, 1-inch lumber, overlaid with shingles. Patent plaster board or lath and plaster. Doors, 2 ft. 8 in. x 6 ft. 8 in.; front door, 3 ft. x 7 ft. Windows, casement in front of house, others sliding sash. Walls siding, pergola columns, 12 in. Base board, stairs, and all interior trim and finish clear Yellow Pine. Hardware, locks, hinges, knobs, etc., brushed brass. Nails, flashing, paints, and varnishes for two coats inside and outside.



First Floor Plan, Style Brentwood

Second Floor Plan, Style Brentwood



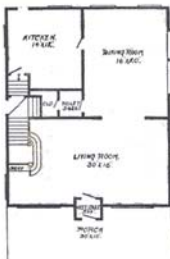
ALADDIN DWELLING THE MASSACHUSETTS

A DISTINCTLY original type following Swiss lines, yet perfectly adapted to modern ideas of what an American home should be. The Massachusetts is presented as one of our newest "Aladdins." The use of cobble stones is optional, as we regularly supply the built-up porch pedestals and rail of heavy timber and shingles. Wide siding is furnished for the first story and shingles for the second story. The roof has an overhang of four feet, supported by heavy-timber brackets. While the porch floor and railing extend across the front of the house, the porch roof ends under one window and projects over the opposite side, supported by heavy pedestals forming a porte cochere. The large bay window in dining room with built-in seat is an attractive feature. Note the floor plan. It shows living room 16 x 30 ft. with open stairway, built-in bookcase and square columns in arch, extra large dining room, kitchen, grade entrance, and up stairs is shown billiard room, three bed rooms, bath and closets.

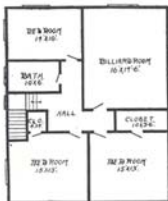
SPECIFICATIONS

Size, 30 ft. x 36 ft. (exclusive of porch and porte cochere). Price, \$2,446.
Cash Discount, 5%. Net Price, \$2,323.70. See Terms.

Height of ceiling, 9 ft. first floor; 8 ft. second floor. All lumber selected Yellow Pine and Huron Pine. Sill, 6 x 8 in. Studding, 2 x 4 in. Rafters, 2 x 6 in. Joists, 2 x 10 in. down and 2 x 10 in. up stairs. Flooring, 1-inch matched, 3 inches wide. Roof, 1-inch lumber, overlaid with shingles or roofing. Patent plaster board or lath and plaster. Walls, first story, siding; second story, shingles. Doors, 2 ft. 8 in. x 6 ft. 8 in.; front door, 3 ft. x 7 ft. Windows, special, two sliding sash, double strength glass. Front and rear steps. Base board, stairs, and all interior trim and finish clear Yellow Pine. Hardware, locks, hinges, knobs, brushed brass. Nails and paint for two coats inside and outside.



First Floor Plan, Style
Massachusetts



Second Floor Plan, Style
Massachusetts

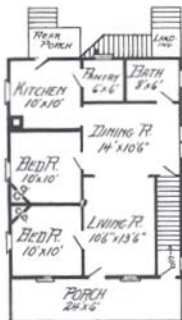


ALADDIN TWO-APARTMENT HOUSE THE DUPLEX

THE "Aladdin" two-family house, The Duplex, is produced as the result of a large demand we have had for a double house. The double house has some very attractive features. It enables its owner to live in one part and secure a good rental from the other — and his return is consequently much greater than if he had built two separate houses. The Duplex is a big, strong, conveniently arranged house, and its completed cost will be several hundred dollars less than it could possibly be built for by any other method. Note the double front and back porches.

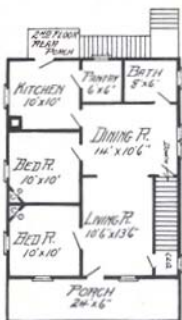
SPECIFICATIONS

Size, 24 x 36 ft. Price, \$1,210. Cash Discount, 5%. Net Price, \$1,149.50. See Terms.



First Floor Plan, Style Duplex

Height of ceilings, 9 ft. first floor; 8 ft. second floor. All ceilings up stairs and down stairs square, not hipped.
All lumber selected Yellow Pine and Huron Pine.
Sill, 6 x 8 in.
Joists, 2 x 8 in. first floor, 2 x 8 in. second floor. Studding and rafters, 2 x 4 in.
Joists, studding, and ceiling joists placed on 16-inch centers.
Sheathing lumber.
Flooring, 1-inch matched, 3 inches wide.
Bevel siding.
Roof, inch lumber, overlaid with best prepared roofing or shingles.
Patent plaster board or lath and plaster.
Base board and all interior trim and finish clear Yellow Pine.
Porch columns, square, 10 in., with railing.
Windows, 30 x 66 in., two sliding sash, glass double strength.
Doors, outside, 2 ft. 8 in. x 6 ft. 8 in.; inside, 2 ft. 8 in. x 6 ft. 8 in.; front door, upper half glass.
Front and rear steps.
Hardware, locks, hinges, knobs, nails, paint for two coats inside and outside.



Second Floor Plan, Style Duplex



ALADDIN DWELLING HOUSE THE CONSORT

A DUPLEX house having the advantage of looking single. Separate front doors on combination porch. Individual side porches, all rooms ample size. Two bed rooms and bath on second floor either side. First story shingle, second story siding adds to appearance. Porch corners have pillars to balance. A profitable investment that soon means free rent for owner.

SPECIFICATIONS

Size, 33 x 36 ft. Price, \$1,847. Cash Discount, 5%. Net Price, \$1,754.65. See Terms.

Height of ceilings, 9 ft. first floor; 8 ft. second floor.

All ceilings up stairs and down stairs square, not hipped.

All lumber selected Huron Pine and Yellow Pine.

Sill, 6 x 8 in.

Joists, 2 x 8 in., first floor, 2 x 8 in. second floor. Studding and rafters, 2 x 4 in.

Flooring, 1-inch matched, 3 inches wide.

Sheathing lumber. Side walls, shingles, first story; bevel siding, second story.

Roof, inch lumber, overlaid with best prepared roofing or shingles.

Patent plaster board or lath and plaster.

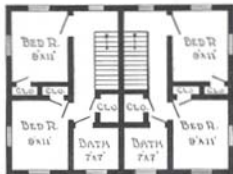
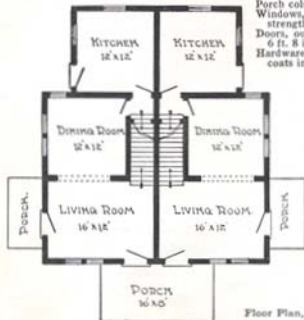
Base board and all interior trim and finish clear Yellow Pine.

Porch columns, square, and of wood.

Windows, 30 x 60 in., two sliding sash, glass double strength.

Doors, outside, 2 ft. 8 in. x 6 ft. 8 in., inside, 2 ft. 8 in. x 6 ft. 8 in.; front door, upper half glass.

Hardware, locks, hinges, knobs, nails, and paint for two coats inside and outside.



Floor Plan, Style Consort



THE CLUB HOUSE

OUR first sale of this great house used as a club house by a gun club in Virginia, but can be used for hotel or farm house with slight alterations. Modern type of construction, with walls of siding and porch across entire front. Door opens into a central lobby or gun room, with wide stairs to second floor; office and lounging room to one side; dining room on other. Kitchen extends back from main building, keeps heat and cooking smell from guests. Every bed room has large window.

SPECIFICATIONS

Price, \$2,654. Cash Discount, 5%. Net Price, \$2,521.30. See Terms.



Floor Plan

Height of ceilings, 9 ft. first floor; 8 ft. second floor. All lumber selected Huron Pine and Yellow Pine. Sill, 6 x 8 in. Studding and ceiling joists, 2 x 4 in. Joists, 2 x 10 in. down and 2 x 10 in. up stairs. Joists and studding placed every 16 in.

Sheathing lumber. Bevel siding.

Flooring, 1-inch matched, 3 inches wide.

Roof, 1-inch lumber overlaid with shingles.

Patent plaster board or lath and plaster.

Doors, 2 ft. 8 in. x 6 ft. 8 in.; front door, special.

Windows, 30 x 66 in., two sliding sash, double strength glass.

Base boards and all interior trim and finish clear Yellow Pine.

Front and rear steps.

Complete instructions and illustrations for erecting.

All hardware, locks, hinges, knobs, nails, and paint for two coats inside and outside.



Floor Plan





ALADDIN BARNS GAMBREL ROOF BARN

THREE types of barns are here shown. In every case the construction of the barns and material is identical, the only difference being in size and designs. These barns have given the highest satisfaction and service on the western plains of Nebraska and Kansas, where they are subjected to the heaviest strains of wind and storms. They will stand any strains that any high-class barn can be expected to withstand. The Gambrel design has side walls 14 ft. high, and the gable roof barn has side walls 16 ft. high.

GAMBREL DESIGN BARN

- No. 1. Size, 20 x 30 ft. Price, \$415. Add \$130 for each 10 ft. longer.
 No. 2. Size, 30 x 30 ft. Price, \$500. Add \$150 for each 10 ft. longer.
 5% discount from above prices for full amount with order.



Gable Design Barn



Special. Size, 16 x 24 ft. Price, \$318. Cash Discount, 5%.
 Net Price, \$302.10. See Terms.

GABLE DESIGN BARN

No. 1. Size, 20 x 30 ft.	Price, \$356.	Cash Discount, 5%.	Net Price, \$338.20.	See Terms.
No. 2. Size, 22 x 40 ft.	Price, \$502.	Cash Discount, 5%.	Net Price, \$476.90.	See Terms.
No. 3. Size, 30 x 40 ft.	Price, \$599.	Cash Discount, 5%.	Net Price, \$569.05.	See Terms.
No. 4. Size, 30 x 60 ft.	Price, \$775.	Cash Discount, 5%.	Net Price, \$736.25.	See Terms.
No. 5. Size, 40 x 60 ft.	Price, \$981.	Cash Discount, 5%.	Net Price, \$931.95.	See Terms.

ALADDIN HUNTER'S LODGE

This building is designed for sealer's house, or hunter's lodge. It is built just like other houses, strong and substantial. One door in front and four windows, two on each side. Height of side wall, 7 ft. 6 in. No plaster board with this house.

Size, 12 x 16 ft. Price, \$98.80. Cash Discount, 5%. Net Price, \$93.86. See Terms.



ALADDIN BUNGALOW THE KENTUCKY

THE place of honor is given to the Aladdin Bungalow, "The Kentucky." Is it not a beauty in every line? Simplicity is the keynote, yet what could be added to improve its attractions? While it reminds one of the stately colonnades of old colonial mansions, it still retains the delightful atmosphere of modern American bungalows. The broad expanse of porch, with plain Tuscan columns and projecting eaves successfully blends these two most desirable types without losing the dignity of the one or the cosy hominess of the other. Double front doors swing to open wide a hospitality of true American spirit. Casement windows with divided lights swing into living room, dining room and bedroom from the porch. Both living room and dining room are unusually well lighted. The Kentucky Bungalow has made a most remarkable impression on our customers, having attained a greater degree of popularity than any design we have ever produced. If you want shingles for side walls, ask for price.

SPECIFICATIONS

No. 1. Size, 32 x 32 ft. Price, \$925. Cash Discount, 5%. Net Price, \$868.75. See Terms.
No. 2. Size, 42 x 32 ft. Price, \$1,320. Cash Discount, 5%. Net Price, \$1,254.00. See Terms.

Height of ceiling, 9 ft. All ceilings square, not hipped. All lumber selected Yellow Pine and Hiram Pine.

Sill, 4 in. Joists, 2 x 8 in. Rafters, 2 x 6 in. Shading and ceiling joists, 2 x 4 in.

Joists, rafters, and ceiling joists placed every 20 in.

Shedding lumber. Flooring, 5-inch matched, 3 inches wide.

Base, 1-inch lumber, overlaid with best prepared roofing or shingles. Porcelain plaster base or left and plaster.

Porch columns, 8 in. Doors, outside, 2 ft. 8 in. x 6 ft. 8 in. inside, 2 ft. 8 in. x 6 ft. 8 in. 2 1/2 ft. 8 in. Front and rear steps. Windows, 30 x 56 in. glass double strength. Base board and all interior trim and finish clear Yellow Pine. Hardware, locks, hinges, knobs, nails, and paint for two coats inside and outside. Special cement windows in front.

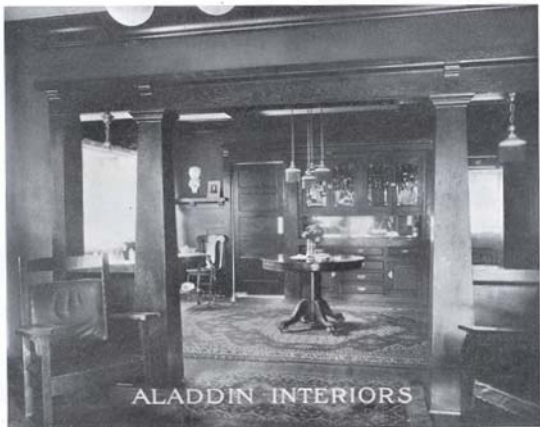


Floor Plan, Style Kentucky No. 1



Floor Plan, Style Kentucky No. 2





"The first sure symptom of a healthful mind
is a heart at rest and pleasure felt at home"

BELIEVING that the interiors of Aladdin Houses will interest you almost as much as our pictures of the exteriors, we are showing a few photographs that we have received from our customers recently.

It has been said that the outside of the house shows the man's character, the inside, the wife's. These pictures, then, show the limitless possibilities for expression of character and taste. Every facility known to modern design, decoration, and finish are at your command. Our designs, our materials, and our skilled workmen are equal to any demand made upon them. Of course, we have a stock finish, at the price listed, of which each of the interiors is a part,



Living Room, The Winthrop



Bed Room, The Massachusetts



Living Room, The Jersey



Reception Hall, The Suburban



Dining Room, The Brentwood



Kitchen, The Gretna



Dining Room, The Portland



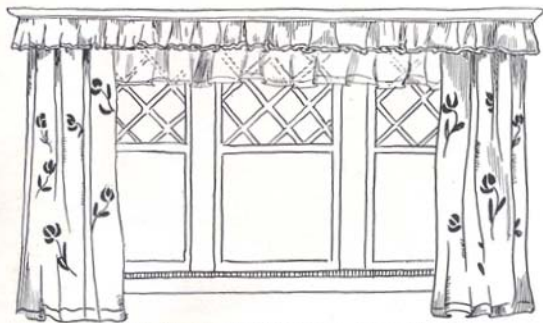
Living Room, The Massachusetts



Dining Room, The Melrose

but they differ with the various designs. Built-in furniture, paneled walls, beamed ceilings, columned arches, buffets, bookcases, in fact, everything that is found in the most modern homes can be had of us. The prices are based on the closest margins—in fact, are about equal to what the material costs the average mill or shop.

For interior finish, we furnish with each house whatever you may select in the way of paints, oils, stains, or varnishes, so that your taste may have free rein.



Example of Curtain Suggestions from Decorative Branch, see page 91



ALADDIN BUNGALOW THE OGDEN

THIS is a very popular type of small dwelling in Los Angeles — simple in design yet with several distinctive features setting it above the usual small house in its appeal to the eye. Broad eaves and exposed rafter ends follow closely the well-known bungalow appearance. Porch with pergola of heavy beams, brackets for the eaves at front and back and rustic siding of perpendicular boards and o. g. battons.

The interior has an excellent living room, size, 18 x 12 ft., bed room with closet and kitchen with pantry. Either paint for the exterior or stain will be furnished.



Floor Plan, Style, Ogden

SPECIFICATIONS

Size, 18 x 24 ft. Price, \$450. Cash Discount, 5%.
Net Price, \$427.50. See Terms.

Height of ceiling, 8 ft.

All ceilings, square, not hipped.

All lumber selected Yellow Pine and Huron Pine.

Joists, 2 x 6 in. Sill, 4 x 6 in.

Studding and rafters, 2 x 4 in.

Joists, studding, and ceiling joists placed every 16 in.

Sheathing lumber. Flooring, 1-inch matched, 3 inches wide.

Siding, 1 x 12 with battons.

Roof, 1-inch lumber, overlaid with best prepared roofing or shingles.

Patent plaster board or lath and plaster.

Window openings, 30 x 66 in., two sliding sash, glass double strength.

Doors, outside 2 ft. 8 in. x 6 ft. 8 in., inside, 2 ft. 8 in. x 6 ft. 8 in.; front door, upper half glass.

Porch columns, 4 in.

Front and rear steps.

Base board and all interior trim and finish clear Yellow Pine.

Hardware, locks, hinges, knobs, nails, paint for two coats inside and outside.



ALADDIN BUNGALOW THE REDLANDS

THIS shingled bungalow is somewhat different in its exterior decorative ideas. The pyramidal column may be built of either brick, stone, or concrete (we do not furnish this). The combination living and dining room is necessary to this small type to secure two bed rooms and bath. Prepared roofing is practically necessary with this very flat type of bungalow roof. Masonry not included.

SPECIFICATIONS

Size, 30 x 28 ft. Price, \$907. Cash Discount, 5%.
Net Price, \$861.65. See Terms.



Floor Plan, Style Redlands

Height of ceilings, 9 ft.

All ceilings square, not hipped.

All lumber selected Yellow Pine and Huron Pine.

Sill, 6 x 6 in.

Joists, 2 x 8 in.

Joists and studding placed every 16 in.

Flooring, 1-inch matched, 3 inches wide.

Sheathing lumber.

Shingled side walls.

Roof, 1-inch lumber, overlaid with shingles or prepared roofing.

Patent plaster board or lath and plaster.

Windows, 30 x 66 in., two sliding sash, glass double strength and special sizes.

Base board and all interior trim and finish clear Yellow Pine.

Doors, outside, 2 ft. 8 in. x 6 ft. 8 in., inside, 2 ft. 8 in. x 6 ft. 8 in.; front door, special design.

Front and rear steps.

Hardware, locks, hinges, knobs, nails, and paint for two coats inside and outside.



ALADDIN BUNGALOW THE JACKSON

INDIVIDUALITY marks the design of this two-story bungalow. The gable roof porch, with groups of three square porch columns, split roof dormer, triple and double window groups, are each added to secure finish and harmony. Six rooms are shown in the floor plans, four down stairs, and two up stairs. Entrance may be had to basement underneath main stairs, or this space may be used for pantry. Pillared arch is furnished between living room and dining room.

SPECIFICATIONS

Size, 32 x 20 ft. Price, \$723. Cash Discount, 5%. Net Price, \$686.85. See Terms.

Height of ceilings, 9 ft. and 7 ft. 6 in.

All lumber selected Yellow Pine and Huron Pine.

Sill, 6 x 6 in.

Joists, 2 x 8 in. Rafters, 2 x 4 in. Studding and ceiling joists placed every 16 in.

Sheathing lumber. Flooring, 1-inch matched, 3 inches wide. Bevel siding.

Roof, 1-inch lumber, overlaid with best prepared roofing or shingles.

Patent plaster board or lath and plaster.

Windows, 30 x 66 in., two sliding sash, glass double strength.

Base board and all interior trim and finish clear Yellow Pine.

Porch columns, 6 in.

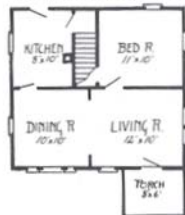
Doors, outside, 2 ft. 8 in. x 6 ft.

8 in., inside, 2 ft. 8 in. x 6 ft.

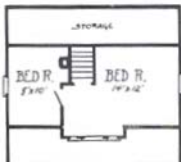
8 in.; front door, upper half glass.

Front and rear steps.

Hardware, locks, hinges, knobs, nails, paint for two coats inside and outside.



First Floor Plan, Style Jackson



Second Floor Plan, Style Jackson



ALADDIN BUNGALOW THE HURON

UNPRETENTIOUS, yet pleasing in general outline, the Huron will be found decidedly satisfactory throughout. It is of the two-story bungalow type, giving the utility of a second story, with the usual cottage or bungalow outline. The bay window forms a cosy nook for a window seat. The porch has a solid railing, much desired by many.

SPECIFICATIONS

Size, 22 x 28 ft. Price, \$829. Cash Discount, 5%. Net Price, \$787.55. See Terms.

Height of ceilings, 9 ft. first floor; 8 ft. second floor.

All lumber selected Yellow Pine and Huron Pine.

Sill, 6 x 8 in.

Studding, 2 x 4 in. Rafters, 2 x 4 in.

Joists, 2 x 8 in. down and 2 x 6 in. up stairs.

Joists and studding placed every 16 in. Sheathing lumber under siding.

Bevel siding. Flooring, 1-inch matched, 3 inches wide.

Roof, 1-inch lumber, overlaid with shingles or roofing.

Patent plaster board or lath and plaster.

Doors, outside, 2 ft. 8 in. x 6 ft. 8 in.; inside, 2 ft. 8 in. x 6 ft. 8 in.; front door, upper half glass.

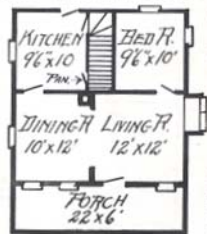
Windows, 30 x 66 in., two sliding sash, double strength glass.

Base board and all interior trim and finish clear Yellow Pine.

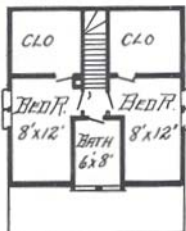
Front and rear steps.

Complete instructions and illustrations for erecting.

All hardware, locks, hinges, knobs, nails, and paint for two coats inside and outside.



First Floor Plan, Style Huron

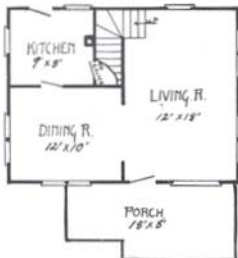


Second Floor Plan, Style Huron



ALADDIN BUNGALOW THE GEORGIA

YOU will recognize in this a pretty half-shingled type of two-story bungalow with a few unusual ornamentations. It is difficult to imagine a more pleasing arrangement of group windows, roof lines, and porch. The interior offers the ever-popular large living room and open stairway, and there is a room for every necessity. The Georgia is one of our newer designs and is proving to be a great seller. Rear porch and front pedestals at ends of steps not included.

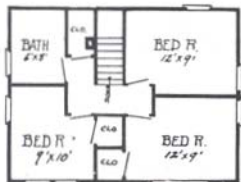


First Floor Plan, Style Georgia

SPECIFICATIONS

Size, 24 x 18 ft. Price, \$839. Cash Discount, 5%. Net Price, \$797.05. See Terms.

Height of ceilings, 9 ft. first floor; 8 ft. second floor. All lumber selected Yellow Pine and Huron Pine. Sill, 6 x 8 in. Studding, 2 x 4 in. Rafters and ceiling joists, 2 x 4 in. Joists, 2 x 8 in. down and 2 x 6 in. up stairs. Joists and studding placed every 16 in. Sheathing lumber. Flooring, 1-in., 3 inches wide. Patent plaster board or lath and plaster. Bevel siding first story, shingles second story. Doors, outside, 2 ft. 8 in. x 6 ft. 8 in.; inside, 2 ft. 8 in. x 6 ft. 8 in.; front door, upper half glass. Window casements, double strength glass. Base board and all interior finish clear Yellow Pine. Front and rear steps. Complete instructions and illustrations for erecting. All hardware, locks, hinges, knobs, nails, and paint for two coats inside and outside.



Second Floor Plan, Style Georgia





ALADDIN BUNGALOW THE LAKEVIEW

A LITTLE beauty that seems to expand when you get inside. Plenty of space for small family in town, and larger family at seashore. Living room has corner-seat fronting fireplace. Two bed rooms, each has closet. Main roof-line raised over living room in an ell that runs down in front to cover porch. Side walls shingle, same as porch pillars. Railing extends through post, mission style.

SPECIFICATIONS

Size, 24 x 32 ft. Price, \$1,035. Cash Discount, 5%. Net Price, \$983.25. See Terms.

Height of ceilings, 9 ft. All ceilings square, not hipped.

All lumber selected Yellow Pine and Huron Pine.

Sill, 6 x 8 in.

Joists, 2 x 8 in. Studding, rafters, and ceiling joists, 2 x 4 in.

Joists and studding placed every 16 in.

Flooring, 1-inch matched, 3 inches wide.

Sheathing lumber.

Roof, 1-inch lumber, overlaid with best prepared roofing or shingles.

Patent plaster board or lath and plaster.

Side walls, shingles.

Window openings, 30 x 66 in., two sliding sash, glass double strength.

Doors, outside, 2 ft. 8 in. x 6 ft. 8 in., inside, 2 ft. 8 in. x 6 ft. 8 in.; front door, special design, 3 ft. x 7 ft.

Base board and all interior trim and finish clear Yellow Pine.

Hardware, locks, hinges, knobs, nails, and paint for two coats inside and outside.



Floor Plan, Style Lakeview





ALADDIN BUNGALOW THE BRIGHTON

A COMPACT bungalow designed for points facing strong winds, on ocean shores, but pretty enough for any location. Porch pillars support double wooden columns. Frontal line of porch flush, affords plenty of shade. Ventilation under roof. Wide stone fireplace in living room. Screen porch in back. Large dining room has paneled window for plenty of light and ocean view. Roof line raised over this window. Shingle side walls. Masonry not furnished.

SPECIFICATIONS

Size, 24 x 34 ft. Price, \$914. Cash Discount, 5%. Net Price, \$868.30.
See Terms.

Height of ceilings, 9 ft.

All ceilings square, not hipped.

All lumber selected Yellow Pine and Huron Pine.

Sill, 6 x 8 in.

Joists, 2 x 8 in.

Studding, rafters, and ceiling joists, 2 x 4 in.

Joists and studding placed every 16 in.

Sheathing lumber.

Flooring, 1-inch matched, 3 inches wide.

Roof, 1-inch lumber, overlaid with best shingles or roofing.

Patent plaster board or lath and plaster.

Side walls, shingles.

Front and rear steps.

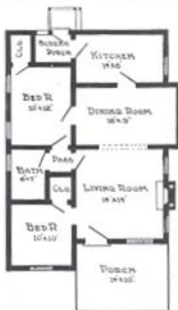
Doors, outside, 2 ft. 8 in. x 6 ft. 8 in., inside, 2 ft. 8 in. x 6 ft. 8 in.; front door, special.

Window openings, 30 x 66 in., two sliding sash, glass double strength.

Porch columns, 6 in. square.

Base boards and all interior trim and finish clear Yellow Pine.

Hardware, locks, hinges, knobs, nails, and paint for two coats inside and outside.



Floor Plan, Style Brighton



ALADDIN BUNGALOW THE MELROSE

ORIGINAL ideas are embodied in the design of this real bungalow. Not only are the rooms all well proportioned but they are exceptionally well arranged for convenience, light, and comfort. One of the most desirable things in this design is the loggia or sun parlor. This makes a delightful sewing room and reading room. Plenty of wall space is secured in the living room for davenport or piano. French doors divide living room from loggia. Arch separates living room and dining room. Two good bed rooms, each with closet, are shown. Cellar entrance and rear door are in just the right location, while bath is next to kitchen and reached from hall. The exterior is shingled all over.

SPECIFICATIONS

Size, 24 x 40 ft. (exclusive of porch). Price, \$1,246. Cash Discount, 5%. Net Price, \$1,183.70. See Terms.

Height of ceilings, 9 ft.

All lumber selected Yellow Pine and Huron Pine.



Floor Plan, Style Melrose

Sill, 6 x 8 in.

Joists, 2 x 8 in. Studding, rafters, and ceiling joists, 2 x 4 in.

Joists and studding placed every 16 in.

Flooring, 1-inch matched, 3 inches wide.

Roof, 1-inch lumber, overlaid with best prepared roofing or shingles.

Patent plaster board or lath and plaster.

Side walls, sheathing lumber, and shingles.

Window openings, 30 x 66 in., two sliding sash, glass, double strength.

Doors, outside, 2 ft. 8 in. x 6 ft. 8 in., inside, 2 ft. 8 in. x 6 ft. 8 in.; front door, special design oak.

Front door, 3 ft. x 7 ft.

Base boards and all interior trim and finish clear Yellow Pine.

Hardware, locks, hinges, knobs, nails, paint for two coats inside and outside.





ALADDIN BUNGALOW THE SHERMAN

LIVING room, dining room, kitchen, pantry, three bed rooms, bath, and closet are shown in the plan of this desirable bungalow. The living room is square and of good dimensions, with arch leading to dining room. Attractive group windows are furnished for living room. The arrangement of the several rooms is very convenient and handy. Divided square lights are furnished for upper sash of all windows, although they will be furnished with single large glass if preferred.

SPECIFICATIONS

Sherman, No. 1. Size, 24 x 46 ft. Price, \$1,078. Cash Discount, 5%. Net Price, \$1,024.10. See Terms.
Sherman, No. 2. Size, 26 x 48 ft. Price, \$1,230. Cash Discount, 5%. Net Price, \$1,168.50. See Terms.

Height of ceilings, 9 ft. All ceilings square, not hipped.

All lumber selected Yellow Pine and Huron Pine.

Sill, 6 x 8 in.

Joists, 2 x 8 in.

Rafters, 2 x 6 in.

Studding and ceiling joists, 2 x 4 in.

Joists, studding, and ceiling joists placed every 16 in.

Sheathing lumber.

Flooring, 1-inch matched, 3 inches wide.

Bevel siding.

Roof, 1 inch lumber, overlaid with best prepared roofing or shingles.

Patent plaster board or lath and plaster.

Windows, 30 x 66 in., two sliding sash, glass double strength.

Base board and all interior trim and finish clear Yellow Pine.

Porch columns, square, with railing.

Doors, outside, 2 ft. 8 in. x 6 ft. 8 in., inside, 2 ft. 8 in. x 6 ft. 8 in.

Front and rear steps.

Hardware, locks, hinges, knobs, nails, and paint for two coats inside and outside.



Floor Plan No. 1, Style
Sherman



Floor Plan No. 2, Style
Sherman



ALADDIN BUNGALOW THE WINTHROP

PLENTY of light! Plenty of air! Cosy, compact, and convenient. All these combined make the Winthrop an ideal type for a small family bungalow. The screened porch and grade and cellar entrance off the kitchen will save many steps for the housekeeper, and the bay window in the dining room makes it a cheerful, sunny room. As originally designed, the outside walls of the Winthrop are shingled, but siding can be substituted, if desired. Certainly, no more attractively designed and conveniently arranged bungalow could possibly be built than the Winthrop. Masonry not included.

SPECIFICATIONS

Size, 24 x 39 (exclusive of porch). Price, \$1,046. Cash Discount, 5%. Net Price, \$993.70. See Terms.

Height of ceilings, 9 ft. All ceilings square, not hipped.

All lumber selected Yellow Pine and Huron Pine.

Sill, 6 x 8 in.

Joists, 2 x 8 in. Rafters, 2 x 6 in. Studding and ceiling joists, 2 x 4 in.

Joists, studding, and ceiling joists placed every 16 in.

Flooring, 1-inch matched, 3 inches wide. Side walls, shingles. Sheathing lumber.

Roof, 1-inch lumber, overlaid with best prepared roofing or shingles.

Patent plaster board or lath and plaster.

Windows, 30 x 66 in., two sliding sash, glass double strength.

Base board and all interior trim and finish clear Yellow Pine.

Porch columns, square, with chain rail.

Doors, outside, 2 ft. 8 in. x 6 ft. 8 in., inside, 2 ft. 8 in. x 6 ft. 8 in.

Front and rear steps.

Hardware, locks, hinges, knobs, nails, and paint for two coats inside and outside.



Floor P'





ALADDIN BUNGALOW THE MARSDEN

THIS pretty bungalow, of six rooms, is designed in excellent style and the plan commends itself for its compactness and to give all the room possible for its cost. The living room is 26 x 16 ft. This room is separated from the dining room by an attractive arch. The dining room has a large deep bay window, arranged to allow a buffet underneath. There are three good-sized chambers with bath

room between and directly connecting them to inside hall. Generous closet room has been provided. The grade cellar entrance is another convenient feature.

The Marsden is without question the most complete, convenient, and attractive design that we are showing.

SPECIFICATIONS

Size, 26 x 38 ft. Price, \$9,412. Cash Discount, 5%. Net Price, \$8,941.40. See Terms.

Height of ceilings, 9 ft.; second floor, 8 ft.

All lumber selected Yellow Pine and Huron Pine.

Sill, 6 x 8 in. Joists, 2 x 8 in. first floor, 2 x 8



Second Floor Plan, Style Marsden



First Floor Plan, Style Marsden

in. second floor. Studding, rafters, and ceiling joists, 2 x 4 in.

Flooring, 1-inch matched, 3 inches wide.

Joist and studding placed every 16 in.

Side walls, shingles.

Roof, 1-inch lumber, overlaid with shingles.

Patent plaster board or lath and plaster.

Windows, 30 x 66 in., two sliding sash, glass double

strength, also special sizes.

Base board and all interior trim and finish clear

Yellow Pine.

Porch columns, square, with railing.

Doors, outside, 2 ft. 8 in. x 6 ft. 8 in., inside, 2 ft. 8

in. x 6 ft. 8 in.; front door, special design.

Front and rear steps.

Hardware, locks, hinges, knobs, nails, and paint for

two coats inside and outside.





ALADDIN DWELLING THE SWISS

THIS house is modeled on Swiss lines with the usual flat roof and straight lines. The porch is of the pergola type with upper section that can be used as a sleeping porch. Exposed rafters, heavy brackets, and shingled exterior all make for attractiveness. The down stairs is well planned to utilize all space possible and you will note the kitchen stairway to main landing. Four bed rooms, bath, and closets are arranged on the second floor.

SPECIFICATIONS

Size, 26 x 28 ft. Price, \$1,365. Cash Discount, 5%.

Net Price, \$1,296.75. See Terms.

Height of ceiling, 9 ft. first floor; 8 ft. second floor.

All lumber selected Yellow Pine and Huron Pine.

Sill, 6 x 8 in.

Studding, 2 x 4 in. Rafters

and ceiling joists, 2 x 4 in.

Joists, 2 x 8 in. down and 2 x 8 in. up stairs.

Joists and studding placed every 16 in.

Flooring, 1-inch matched, 3 inches wide.

Roof, 1-inch lumber, overlaid with shingles. Sheathing

lumber. Side walls, shingles.

Patent plaster board or lath and plaster.

Doors, outside, 2 ft. 8 in. x 6 ft. 8 in., inside, 2 ft. 8 in. x 6 ft. 8 in.; front door, upper half glass.

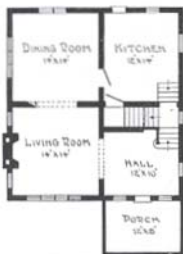
Windows, 30 x 66 in., two sliding sash, double strength glass.

Base board and all interior finish clear Yellow Pine.

Front and rear steps.

Complete instructions and illustrations for erecting.

All hardware, locks, hinges, knobs, nails, and paint for two coats inside and outside.



First Floor Plan, Style Swiss



Second Floor Plan, Style Swiss



ALADDIN BUNGALOW THE SELFRIDGE

SNUG and comfy, still having all ample rooms. Plain white porch and fireplace of concrete ornamented with coping stones. Top of chimney same. Double window either side of fireplace, in fact, double windows wherever possible. Front roof line longer than back, to include porch. Shingle side walls. Masonry not furnished.

SPECIFICATIONS

Size, 26 x 27 ft. Price, \$817. Cash Discount, 5%.

Net Price, \$776.15. See Terms.

Height of ceilings, 9 ft.

All lumber selected Yellow Pine and Huron Pine.

Sill, 6 x 8 in.

Studding, 2 x 4 in. Rafters and ceiling joists, 2 x 4 in.

Joists, 2 x 8 in.

Sheathing lumber.

Joists and studding placed every 16 in.

Flooring, $\frac{1}{2}$ -inch., 3 inches wide.

Patent plaster board or lath and plaster.

Side walls shingles.

Doors, outside, 2 ft. 8 in. x 6 ft. 8 in., inside, 2 ft. 8 in. x 6 ft. 8 in.; front door, special.

Windows, 30 x 66 in., two sliding sash, double strength glass.

Base board and all interior finish clear Yellow Pine.

Front and rear steps.

Complete instructions and illustrations for erecting.

All hardware, locks, hinges, knobs, nails, and paint for two coats inside and outside.



Floor Plan, Style Selfridge



ALADDIN BUNGALOW THE DETROIT

A TWO-STORY design and yet carrying genuine bungalow lines throughout. Roomy, well arranged, and very satisfactory to all owners. The price, as on our other buildings, is at least 30 per cent. lower than the same building could possibly be built by ordinary methods. Consider the advantage of knowing in advance the exact cost of all the material for the complete structure.

SPECIFICATIONS

Size, 26 x 30 ft. Price, \$932. Cash Discount, 5%. Net Price, \$885.40. See Terms

Height of ceilings, 9 ft.; second floor, 8 ft.

All lumber selected Yellow Pine and Huron Pine.

Sill, 6 x 8 in.

Joists, 2 x 8 in. first floor, 2 x 6 in. second floor. Studding, rafters, and ceiling joists, 2 x 4 in.

Joists and studding placed every 16 in.

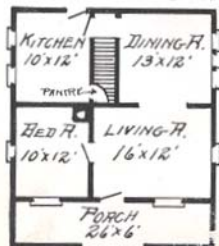
Flooring, 1-inch matched, 3 inches wide.

Roof, 1-inch lumber, overlaid with shingles.

Side walls, sheathing, and shingles.

Patent plaster board or lath and plaster.

Windows, 30 x 66 in., two sliding sash, glass double strength, also special sizes.



First Floor Plan, Style Detroit

Base board and all interior trim and finish clear Yellow Pine.

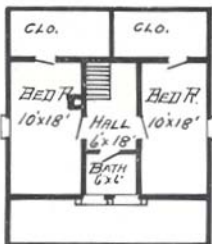
Porch columns square, with railing.

Doors, outside, 2 ft. 8 in. x 6 ft. 8 in., inside, 2 ft. 8 in. x 6 ft. 8 in.; front door, special design.

Front and rear steps.

Hardware, locks, hinges, knobs, nails, and paint

two coats inside and outside.



Second Floor Plan, Style Detroit



ALADDIN BUNGALOW THE PIERSON

MISSION-STYLE bungalow with pergola porch. Latter has columns set on square bases of peculiar design, built of brick to match fireplace. Two wide front windows. Window either side of fireplace, and double window in dining room, bed room, and kitchen. Illustration shows how shingle side walls may be applied to enhance beauties of construction. No masonry included.

SPECIFICATIONS

Size, 26 x 34 ft. Price, \$1,155. Cash Discount, 5%.

Net Price, \$1,097.25. See Terms.

Height of ceilings, 9 ft. All ceilings square, not hipped.

All lumber selected Yellow Pine and Huron Pine.

Sill, 6 x 8 in.

Joists, 2 x 8 in. Rafters, 2 x 6 in. Studding and ceiling joists, 2 x 4 in.

Joists, studding, and ceiling joists placed every 16 in.

Flooring, 1-inch matched, 3 inches wide. Side walls, sheathing lumber, and shingles.

Roof, 1-inch lumber, overlaid with best prepared roofing or shingles.

Patent plaster board or lath and plaster.

Windows, 30 x 66 in., two sliding sash, also two specials, glass double strength.

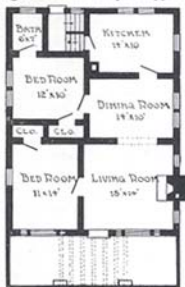
Base board and all interior trim and finish clear Yellow Pine.

Porch columns, square.

Doors, outside, 2 ft. 8 in. x 6 ft. 8 in., inside 2 ft. 8 in. x 6 ft. 8 in.; front door, special.

Front and rear steps.

Hardware, locks, hinges, knobs, nails, and paint for two coats inside and outside.



Floor Plan, Style Pierson



ALADDIN BUNGALOW THE ROOKWOOD

PYRAMID pillars of concrete support the porch corners. The same tapering style is borne out in the fireplace and its chimney. Latter has counter-sunk panels in Greek design. Shingles or siding for outside walls. Entrance post heavy, square, rising one back of other. A very well-lighted construction (see diagram).

Roof line raised over dining-room windows. No masonry included.

SPECIFICATIONS

Size, 26 x 42 ft. Price, \$1,461. Cash Discount, 5%.
Net Price, \$1,387.95. See Terms.

Height of ceilings, 9 ft.

All lumber selected Yellow Pine and Huron Pine.

Sill, 6 x 8 in.

Joists, 2 x 8 in. Rafters, 2 x 6 in. Studding and ceiling joists, 2 x 4 in.

Joists, studding, and ceiling joists placed every 16 in.

Sheathing lumber.

Flooring, 1-inch matched, 3 inches wide.

Bevel siding.

Roof, 1-inch lumber, overlaid with best prepared roofing or shingles.

Patent plaster board or lath and plaster.

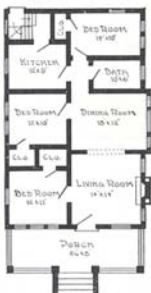
Windows, 30 x 66 in., two sliding sash, glass double strength.

Base board and all interior trim and finish clear Yellow Pine.

Doors, outside, 2 ft. 8 in. x 6 ft. 8 in., inside, 2 ft. 8 in. x 6 ft. 8 in.; front door, special.

Front and rear steps.

Hardware, locks, hinges, knobs, nails, and paint for two coats inside and outside.



Floor Plan, The Rookwood



ALADDIN BUNGALOW THE ROMEO

A MODERN, homey type, with massive stone columns fronting porch; stone fireplace of ample width for wood-logs in one end of mammoth living room. This extends across entire front; has two wide windows in front, and a third in end opposite fireplace. Double windows in dining room. Stairs to central landing from both living room and kitchen. Door on this landing opens onto Romeo balcony. Up stairs, large front bed room has two clothes closets; other bed rooms each have clothes closet. Very large bath room. Wide overhanging eaves have broken roof line to add to attractiveness. Masonry not included.

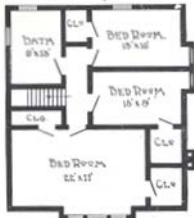
SPECIFICATIONS

Size, 28 x 30 ft. Price, \$1,767. Cash Discount, 5%.
Net Price, \$1,678.15. See Terms.

Height of ceilings, 9 ft. first floor; 8 ft. second floor.
All lumber selected Yellow Pine and Huron Pine.
Sill, 6 x 8 in.
Studding, 2 x 4 in.
Joists, 2 x 10 in. down and 2 x 8 in. up stairs.
Joists and studding placed every 16 in.
Sheathing lumber. Flooring, 1-inch matched, 3 inches wide.
Bevel siding.
Roof, 1-inch lumber, overlaid with shingles or roofing.
Patent plaster board or lath and plaster.
Doors, outside, 2 ft. 8 in. x 6 ft. 8 in., inside, 2 ft. 8 in. x 6 ft. 8 in.; front door, special.
Windows, 30 x 66 in., two sliding sash, double strength glass.
One special three-group window. Two special two-group.
Base board and all interior trim and finish clear Yellow Pine.
Front and rear steps.
Complete instructions and illustrations for erecting.
All hardware, locks, hinges, knobs, nails, and paint for two coats inside and outside.



First Floor Plan, Style Romeo



Second Floor Plan, Style Romeo





ALADDIN BUNGALOW THE ALBANY

SEVERAL strikingly distinctive features will be noticed in the design of this handsome bungalow, The Albany. It is of a similar type to our Denver. Notice the construction of the porch railing — different. The exterior window and door trim tapers toward the top, the porch pillars are square and paneled, the dormer windows in roof give light and room to up stairs bed rooms. All side walls and roof are shingled.

SPECIFICATIONS

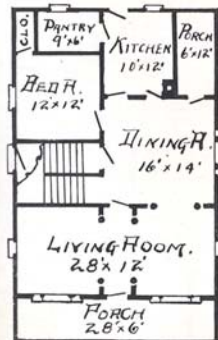
Size, 28 x 44 ft. Price, \$1,680. Cash Discount, 5%. Net Price, \$1,596. See Terms.

All lumber selected Yellow Pine and Huron Pine.

Height of ceilings, 9 ft. first floor; 8 ft. second floor, not hipped. Sill, 6 x 8 in.

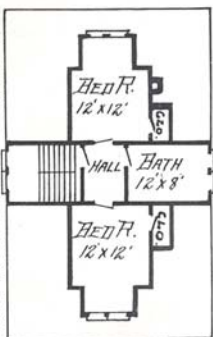
Joists, first floor, 2 x 8 in. and second floor, 2 x 6 in., studding and rafters, 2 x 4 in.

Joists, studding, and ceiling joists placed on 16-in. centers. Sheathing lumber. Flooring, 1-inch matched, 3 inches wide.



First Floor Plan, Style Albany

Side walls, shingles.
Roof, inch lumber, overlaid with best shingles.
Patent plaster board or lath and plaster.
Base board and all interior trim and finish clear Yellow Pine.
Porch columns, 10 in. square.
Windows, 30 x 66 in., two sliding sash, double strength glass. Two special triple frames and four special mullion frames.
Doors, 2 ft. 8 in. x 6 ft. 8 in.; front door, 2 ft. 10 in. x 7 ft. 8 in., upper half glass.
Front and rear steps.
Hardware, locks, hinges, knobs, nails, and paint for two coats inside and outside.



Second Floor Plan, Style Albany



ALADDIN BUNGALOW THE ORMOND

A SQUARE-EFFECT design whose front typifies strength and compactness. Four brick pillars project above porch floor; all capped with stone slab to match porch edge and steps. Porch columns rest on two end pillars. Frontal line of porch extends flush across full width of house. Two very wide windows. Two bed rooms open on hall, with bath room between them. Den can be used as third bed room, if desired. Shingle siding. Please understand we do not furnish masonry for porch.

SPECIFICATIONS

Size, 28 x 45 ft. Price, \$1,456. Cash Discount, 5%. Net Price, \$1,383.20. See Terms.

Height of ceilings, 9 ft.

All lumber selected Yellow Pine and Huron Pine.

Sill, 6 x 8 in.

Joists, 2 x 10 in. Studding and ceiling joists, 2 x 4 in. Rafters, 2 x 6 in.

Joists and studding placed every 16 in.

Flooring, 1-inch matched, 3 inches wide.

Roof, 1-inch lumber, overlaid with shingles or roofing.

Side walls, sheathing and shingles.

Patent plaster board or lath and plaster.

Windows, 30 x 66 in., two sliding sash, glass double strength, also special sizes.

Base board and all interior trim and finish clear Yellow Pine.

Porch columns square, tapering.

Doors, outside, 2 ft. 8 in. x 6 ft. 8 in., inside, 2 ft. 8 in. x 6 ft. 8 in.; front door, special design.

Front and rear steps.

Hardware, locks, hinges, knobs, nails, and paint for two coats inside and outside.



Floor Plan, Style Ormond



ALADDIN BUNGALOW THE LINWOOD

THE Linwood—surprising what room there is in this bungalow, account of the arrangement. Three big bed rooms, each with large clothes closets, and all bed rooms open on hall. Side porch may be used for sleeping. All rooms well lighted; fireplace in living room. Front porch is built pergola-style with gently-sloping roof; corner columns heavy. Note how looks are improved by alternating narrow and wide strips of siding. Beamed ceiling for living and dining rooms. Masonry not included. Instead of concrete columns, they are furnished in wood.

SPECIFICATIONS

Size, 28 x 52 ft. Price, \$1,416. Cash Discount, 5%.

Net Price, \$1,345.20. See Terms.

Height of ceilings, 9 ft.

All lumber selected Yellow Pine and Huron Pine.

Sill, 6 x 8 in.

Joists, 2 x 8 in. Rafters, 2 x 4 in.

Studding and ceiling joists placed every 16 in.

Sheathing lumber.

Flooring, 1-inch matched, 3 inches wide.

Bevel siding, wide or narrow.

Roof, 1-inch lumber overlaid with best prepared roofing or shingles.

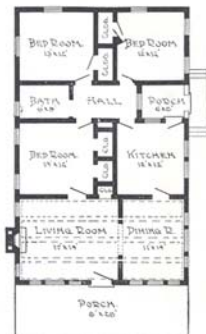
Patent plaster board or lath and plaster.

Windows, 30 x 66 in., two sliding sash, glass double strength.

Base board and all interior trim and finish clear Yellow Pine.

Doors, outside, 2 ft. 8 in. x 6 ft. 8 in., inside, 2 ft. 8 in. x 6 ft. 8 in.; front door, special design. Front and rear steps.

Hardware, locks, hinges, knobs, nails, and paint for two coats inside and outside.



Floor Plan, Style Linwood



ALADDIN BUNGALOW THE MAPLES

THE Maples typifies the bungalow spirit. Low, flat lines, wide eaves, odd windows, exposed rafter ends and simple outlines. A really ideal arrangement is shown inside. Entrance hall leads directly into living room, front bed room or bath. This plan separates bath entrance from any of the rooms usually occupied. Light is furnished to bath through frosted glass window from dining room. This window is placed high. Corner arch leads from living room to dining room. All rooms but the dining room are corner rooms, with plenty of light and air in each. The dining room has attractive wide window. Five rooms with bath, hall, and porch. For Nos. 2 and 3 arrangement see floor plan, The Gretna.

SPECIFICATIONS

- | | | | | | |
|--------|-------------------|---------------|--------------------|----------------------|------------|
| No. 1. | Size, 30 x 24 ft. | Price, \$735. | Cash Discount, 5%. | Net Price, \$698.25. | See Terms. |
| No. 2. | Size, 30 x 16 ft. | Price, \$520. | Cash Discount, 5%. | Net Price, \$494.00. | See Terms. |
| No. 3. | Size, 30 x 18 ft. | Price, \$606. | Cash Discount, 5%. | Net Price, \$575.70. | See Terms. |



No. 1. Style Maples. 30 x 24

Height of ceilings, 9 ft. All lumber selected Yellow Pine and Huron Pine.

Sill, 6 x 6 in.

Joists, 2 x 8 in. Rafters, 2 x 4 in. Joists, studding, and ceiling joists placed every 16 in. Sheathing lumber.

Flooring, 1-inch matched, 3 inches wide. Bevel siding. Roof, 1-inch lumber, overlaid with best prepared roofing or shingles.

Patent plaster board or lath and plaster.

Windows, 30 x 66 in., glass double strength.

Base board and all interior trim and finish clear Yellow Pine.

Porch columns, 6 in.

Doors, outside, 2 ft. 8 in. x 6 ft. 8 in., inside, 2 ft. 8 in. x 6 ft. 8 in.; front door, special design, 3 x 7 ft.

Front and rear steps.

Hardware, locks, hinges, knobs, nails, and paint for two coats inside and outside.



ALADDIN BUNGALOW THE DENVER

WE believe you will agree with us in our assertion that "The Denver" is one of the prettiest little bungalows you ever saw. It is harmonious in outline, attractive to the eye, novel in design, and distinct in detail. Note the broad, sweeping roof lines, with flaring eaves. The outside window and door trim is broad at the base and tapers slightly toward the top. The entire exterior is shingled.

The Denver has two bed rooms, living room, dining room, bath room, kitchen, and closet. The living room is separated from the dining room by a very wide arch. While separating the two rooms, still they are so designed as to give the living room greater size than simply 10 x 12 ft.

SPECIFICATIONS

Size, 30 x 28 ft. Price, \$933. Cash Discount, 5%. Net Price, \$886.35. See Terms.

Height of ceilings, 9 ft. All ceilings square, not hipped.

All lumber selected Yellow Pine and Huron Pine.

Sill, 6 x 8 in.

Joists, 2 x 8 in. Studding and rafters, 2 x 4 in.

Joists, studding, and ceiling joists placed every 16 in.

Flooring, 1-inch matched, 3 inches wide. Sheathing and shingles for all sides.

Roof, 1-inch lumber, overlaid with shingles.

Patent plaster board or lath and plaster.

Windows, 30 x 66 in., two sliding sash, glass double strength, also special sizes.

Base board and all interior trim and finish clear Yellow Pine.

Porch columns, square, with railing.

Doors, outside, 2 ft. 8 in. x 6 ft. 8 in., inside, 2 ft. 8 in. x 6 ft. 8 in.; front door, special design.

Front and rear steps.

Hardware, locks, hinges, knobs, nails, and paint for two coats inside and outside.



Floor Plan, Style Denver



ALADDIN BUNGALOW THE PLAZA

THIS magnificent bungalow secures its inspiration from one of the best-known bungalows in Pasadena, California. The roof lines are well handled, while a very desirable feature will be noted in the porch that extends two-thirds across the front and down the side. Note the pergola roof over the rear section of the porch. The interior is wonderfully arranged, giving three bed rooms, each with closet, and large living room, dining room, and kitchen. The attractions of a dainty breakfast room are most appreciated by the housewife who has had this decided convenience. Built-in buffet is included in the price. Masonry not included.

SPECIFICATIONS

Size, 36 x 44 ft. Price, \$1,682. Cash Discount, 5%. Net Price, \$1,597.90. See Terms.

Height of ceiling, 9 ft. All ceilings square, not hipped.

All lumber selected Yellow Pine and Huron Pine.

Sill, 6 x 8 in.

Joists, 2 x 10 in.

Studding and ceiling joists, 2 x 4 in. Rafters, 2 x 6 in.

Joists and studding placed every 16 in. Flooring, 1-inch matched, 3 inches wide.

Roof, 1-inch lumber, overlaid with best prepared roofing or shingles.

Patent plaster board or lath and plaster.

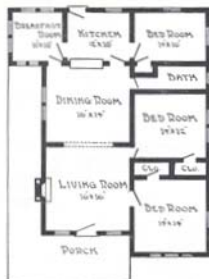
Side walls, sheathing and siding.

Window openings, 30 x 66 in., two sliding sash, glass double strength.

Doors, outside, 3 ft. 8 in. x 6 ft. 8 in., inside, 2 ft. 8 in. x 6 ft. 8 in.; front door, 3 ft. x 7 ft., special design oak.

Base boards and all interior trim and finish, clear Yellow Pine.

Hardware, locks, hinges, knobs, nails, paint for two coats inside and out.



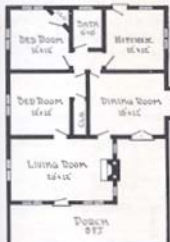
Floor Plan, Style Plaza





ALADDIN BUNGALOW THE RAVENSWOOD

SUBURBAN home type, trim, and beautiful without being expensive. Brick porch has three pillars topped with coping stones, on which rest wood columns carrying roof. Latter has exposed rafters. Long front roof extends to cover porch. The dormer window also has exposed rafters to match main roof. Inside very conveniently arranged, and every room has double windows; dining room bay a group of three windows. Masonry not furnished.



Floor Plan, Style Ravenswood

SPECIFICATIONS

Size, 30 x 44 ft. (over all). Price, \$1,473. Cash Discount, 5%. Net Price, \$1,398.40. See Terms.

Height of ceilings, 9 ft.

All lumber selected Yellow Pine and Huron Pine.

Sill, 6 x 8 in.

Joists, 2 x 10 in. Rafters, 2 x 6 in. Studding and ceiling joists placed every 16 in.

Flooring, 1-inch matched, 3 inches wide. Sheathing lumber. Bevel siding.

Roof, 1-inch lumber, overlaid with best prepared roofing or shingles.

Patent plaster board or lath and plaster.

Windows, 30 x 66 in., two sliding sash; glass, double strength.

Base board and all interior trim and finish clear Yellow Pine.

Porch columns, square, tapering.

Doors, outside, 2 ft. 8 in. x 6 ft. 8 in., inside, 2 ft. 8 in. x 6 ft. 8 in.; front door, special design, 3 x 7 ft.

Front and rear steps.

Hardware, locks, hinges, knobs, nails, and paint for two coats inside and outside.



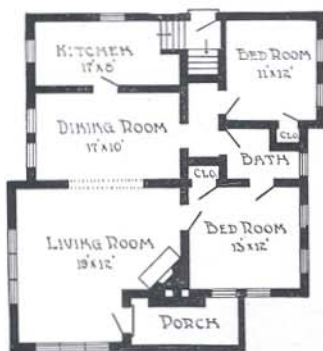


ALADDIN BUNGALOW THE LOGGIA

THIS bungalow is unique because of the unusual features of the front elevation. Large chimney square in front is distinctive, and the fireplace thus utilizes an important corner of the living room, forming a pleasing decorative value. The living room is exceptionally well lighted with group windows, and is of generous dimensions. You will note grade entrance from kitchen, plenty of closet space and good bath room. Masonry not included.

SPECIFICATIONS

Size, 32 x 30 ft. Price, \$1,042. Cash Discount, 5%. Net Price, \$989.90. See Terms.



Floor Plan, Style Loggia

Height of ceilings, 9 ft.
All lumber selected Yellow Pine and Huron Pine.
Sill, 6 x 8 in.
Joists, 2 x 8 in.
Rafters, 2 x 6 in.
Studding and ceiling joists placed every 16 in.
Flooring, 1-inch matched, 3 inches wide.
Side walls shingles.
Sheathing lumber.
Roof, 1-inch lumber, overlaid with best prepared roofing or shingles.
Patent plaster board or lath and plaster.
Windows, 30 x 66 in., two sliding sash, glass double strength.
Base board and all interior trim and finish clear Yellow Pine.
Doors, outside, 2 ft. 8 in. x 6 ft. 8 in., inside, 2 ft. 8 in. x 6 ft. 8 in.; front door, special.
Front and rear steps.
Hardware, locks, hinges, knobs, nails, and paint for two coats inside and outside.

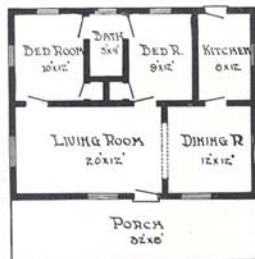


ALADDIN BUNGALOW THE OAKLAND

LOW roof, overhanging eaves, and rugged mission lines stamp this bungalow as typical of many found in sunny Oakland, California. Note the wide front windows in both the dining room and living room. Also wide window in end of living room and high double casement window in end of dining room. Light, roomy bath room is conveniently placed between bed rooms. The main roof overhangs the porch.

SPECIFICATIONS

Size, 32 x 32 ft. Price, \$975. Cash Discount, 5%. Net Price, \$926.25. Set Terms.



Floor Plan, Style Oakland

Height of ceilings, 9 ft. All ceilings square, not hipped.

All lumber selected Yellow Pine and Huron Pine.

Sill, 6 x 8 in.

Joists, 2 x 8 in. Rafters, 2 x 6 in. Studding and ceiling joist, 2 x 4 in.

Joists, studding, and ceiling joists placed every 16 in. Sheathing lumber.

Flooring, 1-inch matched, 3 inches wide. Bevel siding.

Roof, 1-inch lumber, overlaid with best prepared roofing or shingles.

Patent plaster board or lath and plaster.

Windows, 30 x 66 in., two sliding sash, glass double strength.

Base board and all interior trim and finish, clear Yellow Pine.

Porch columns, square, with railing.

Doors, outside, 2 ft. 8 in. x 6 ft. 8 in.; inside, 2 ft. 8 in. x 6 ft. 8 in.

Front and rear steps.

Hardware, locks, hinges, knobs, nails, paint for two coats inside and out.



ALADDIN DWELLING THE LUCERNE

BEAUTIFUL Swiss-style of home, with broken roof lines, and ornate two-story porch. Balcony to correspond on side. Design permits of wide brick fireplace in monster living room. Has window on either side of it. Dining room occupies balance of front and has double window front and side. Fireplace in library, wide upper hall, with four bed rooms opening off it. Connecting front rooms. Deep window-seat at end of upper hall has group of windows to furnish bright light. Shingles and siding for side walls.

SPECIFICATIONS

Size, 34 x 40 ft. Price, \$2,196. Cash Discount, 5%.

Net Price, \$2,086.20. See Terms.

Height of ceiling, 9 ft. first floor; 8 ft. second floor.

All lumber selected Yellow Pine and Huron Pine. Sill, 6 x 8 in.

Studding and ceiling joists, 2 x 4 in. Joists, 2 x 10 in. down and 2 x 8 in. upstairs. Joist and studding placed every 16 in.

Sheathing lumber. Flooring, 1-inch matched, 3 inches wide. Bevel siding first story, shingles second story.

Roof, 1-inch lumber, overlaid with shingles.

Patent plaster board or lath and plaster.

Doors, 2 ft. 8 in. x 6 ft. 8 in.; front door, special.

Windows, 30 x 66 in., two sliding sash, double strength glass, and special.

Base boards and all interior trim and finish clear Yellow Pine.

Front and rear steps.

Complete instructions and illustrations for erecting.

All hardware, locks, hinges, knobs, nails, and paint for two coats inside and outside.



First Floor Plan, Style Lucerne



Second Floor Plan, Style Lucerne



ALADDIN BUNGALOW THE TEXAS

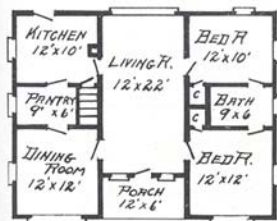
THE porch of the Texas is somewhat different from most of our other designs. It commends itself as a protection from wind, rain, and sun, and is especially appreciated in locations that are more or less exposed to these elements. In the arrangement of rooms, we have found this type especially popular. The grouping of windows as shown above lends much to its attractiveness.

SPECIFICATIONS

Size, 36 x 28 ft. Price, \$1,041. Cash Discount, 5%. Net Price, \$988.95. See Terms.

Height of ceilings, 9 ft. All ceilings square, not hipped.

All lumber selected Yellow Pine and Huron Pine.



Floor Plan, Style Texas

Sill, 6 x 8 in.
Joists, 2 x 8 in.
Studding, rafters, and ceiling joists, 2 x 4 in.
Joists and studding placed every 16 in.
Flooring, 1-inch matched, 3 inches wide.
Roof, 1-inch lumber, overlaid with best prepared roofing or shingles.
Patent plaster board or lath and plaster.
Side walls, sheathing, and shingles.
Window, openings, 30 x 66 in., two sliding sash and special sizes glass double strength.
Doors, outside, 2 ft. 8 in. x 6 ft. 8 in., inside, 2 ft. 8 in. x 6 ft. 8 in.; front door, special design oak, 3 ft. x 7 ft.
Base board and all interior trim and finish clear Yellow Pine.
Hardware, locks, hinges, knobs, nails, and paint for two coats inside and outside.



ALADDIN BUNGALOW THE NEWPORT—STYLE S WITH 52-FOOT PORCH

EVERY feature that is demanded in a high-class residence is incorporated in this handsome structure. Air and freedom, comfort and convenience — these were the points sought after and attained in the design. A 52-foot porch — 16 ft. deep at the ends.

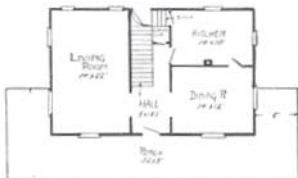
A great airy, central living room — 16 ft. wide, 22 ft. deep, and 20 ft. to the peak of the beamed ceiling, in the design No. 1.

A diamond-paned dormer window throws light through the upper part of the room, and two windows in rear and two in front make the lower part very light, in addition to the small glass in the handsome front door. An attractive gallery runs around the two sides and across the front of this room, with open stairway leading to gallery at rear of room. Rear of this room is so arranged that large open fireplace may be placed if desired.

Arch leads to dining room, with kitchen in rear, and two bed rooms with bath between are on opposite side. Two light, roomy bed rooms are on second floor; this gives living room, dining room, kitchen, four bed rooms, and bath. Enough for family and friends. The floor plan of Newport No. 2 explains itself.

This house erected by usual methods would cost you between \$3,000 and \$3,500. Our method of doing all the skilled labor in our mills, and by automatic machinery, saves a large proportion of the cost, aside from the fact that you buy the complete material direct from the forest.

The above cut is a photo of the Newport as furnished with shingle siding. Shingle siding adds \$48 to the regular price. The Newport is regularly furnished with our ordinary siding.



First Floor Plan No. 2, Style Newport



Second Floor Plan No. 2, Style Newport



ALADDIN BUNGALOW THE NEWPORT—STYLE S

THE gable roof at ends of porch, the shingled porch railing and porch gable, the handsome turned columns on porch, make it very attractive in appearance. Note the long double diamond-paned window in dining room, with swivel-opening arrangement, admitting fresh air to upper part of room and light in plenty. All features of this house are in harmony. With glass porch as shown above and door cut through dining room, you have a delightful sun parlor. Ask for price on glass porch.

SPECIFICATIONS

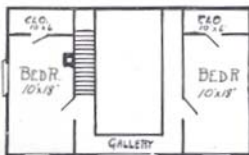
No. 1. Size, 30 x 36 ft. Price, \$1,559. Cash Discount, 5%. Net Price, \$1,481.15. See Terms.

No. 2. Size, 30 x 36 ft. Price, \$1,599. Cash Discount, 5%. Net Price, \$1,519.50. See Terms.

Height of ceilings, 9 ft. first floor; 8 ft. second floor. All lumber selected Yellow Pine and Huron Pine. Sill, 6 x 8 in. Studding, 2 x 4 in. Rafters and ceiling joists, 2 x 6 in. Joists, 2 x 8 in. down and 2 x 6 in. up stairs. Joists and studding placed every 15 in. Flooring, 1-inch matched, 3 inches wide. Roof, 1-inch lumber, overlaid with best prepared roofing (shingles if preferred). Sheathing lumber and siding. Patent plaster board or lath and plaster. Doors, 2 ft. 8 in. x 6 ft. 8 in.; front door heavy oak, glazed, special design, size, 3 ft. x 7 ft. Windows, 30 x 66 in., two sliding sash, double strength glass, also casement. Front and rear steps. Base board and all interior trim and finish clear Yellow Pine. Hardware, locks, hinges, knobs, nails, and paint for two coats inside and outside. Complete instructions and illustrations for erecting.



First Floor Plan, Style Newport



Second Floor Plan, Style Newport



The North American Construction Company has secured special permission from the Good Housekeeping Magazine to use the FIRST PRIZE BUNGALOW DESIGN in the bungalow contest conducted by this magazine.

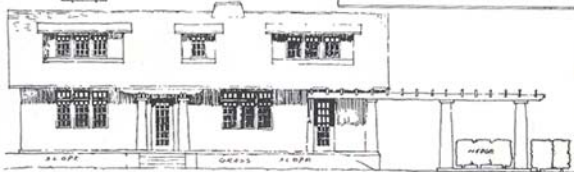
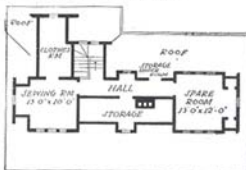
Entries for the contest were received from every section of the country, over one thousand designs being submitted. These designs were submitted to a committee of experts.

In making a choice among this great number of designs, the committee took into consideration, not only the appearance but every feature of convenience, arrangement, economy, and architectural beauty.

Announcement was made in the April issue, and the design presented here was selected as being the best of the thousand designs.

We immediately sought and secured permission to add this design to our large number of Aladdin Houses and we are now manufacturing it complete and exactly as it was reproduced. We have not changed a single feature, even including the pergola and garage, which form a part of the design and include everything in this remarkably low price. It is one of the most popular designs we have ever secured.

We were particularly fortunate in securing permission from Good Housekeeping Magazine, as ordinarily it is impossible for a manufacturer to secure a permission of this kind from any of the high-class publications.



DESCRIPTION OF ALADDIN PRIZE BUNGALOW

CAREFUL examination and study of the interior and exterior of the prize bungalow must convince you that it incorporates the most modern ideas of comfort, convenience, and design. Note the two elevations at the bottom of these pages showing the casement windows with transom, divided lights, and French doors.

The door from the living room onto the veranda has full-length glass panels corresponding to the French door itself.

This not only gives the living room an unusual amount of light but is a charming feature of the design itself.

The dormer windows in the roof give light and space to the second story and break the expanse of the roof.

The pergola, extending from the veranda covers the lane entrance, while the longer pergola at the rear affords a vine-covered walk to the garage and is a most attractive feature of the decorative plan.

The living room has beamed ceilings with convenient entrances to both the dining room and a small hall, which leads four ways, to the bath room, to each bed room, and the kitchen.

A cloak closet sets off from this hall besides the stairway. Entrance to the cellar is obtained from the kitchen, under the main stairway, and roomy pantry divides the kitchen and dining room. The dining room is very light, having a group of three windows at the end, two windows at the rear, and a French door leading to the porch.

One closet is afforded each bed room downstairs, while up stairs a sewing room and a spare room with plenty of closets and space are arranged.

The price we make here includes everything as stated in the specifications below. Includes both pergola and garage at the rear, size 16 x 24 ft.

SPECIFICATIONS

Price bungalow includes bungalow and garage, size, 16 x 24 ft.

Price, \$1,870. Cash Discount, 5%. Net Price, \$1,776.50. See Terms.

Height of ceiling, first floor, 9 ft.; second floor, 8 ft.

All lumber is selected Yellow Pine and Huron Pine.

Sill, 6 x 8 in.

Joists, 2 x 10 ft. first floor; 2 x 8 ft. second floor; studding, rafters, and ceiling joists, 2 x 4 in.

Joists, studding, and ceiling joists placed every 16 in.

Sheathing lumber.

Floor, 1-inch matched, 3 inches wide.

Bevel siding.

Patent plaster board or lath and plaster.

Windows, special size casement design and sliding sash.

Base board and all interior trim and finish clear Yellow Pine.

Porch columns and pergola columns, turned with cap and base.

Special designed Oak outside door.

Inside doors, 2 ft. 8 in. x 6 ft. 8 in.

Hardware, locks, hinges, knobs, nails, and paint for two coats inside and outside.



ALADDIN DWELLING HOUSE THE VILLA

OBERVE carefully the many desirable lineaments of this beautiful home. Character is shown in the daring handling of roof lines and dormers; yet the result is most pleasing to the eye. Heavy timbered pergola covers the porch and is, of course, meant to be vine-covered. Sleeping porch on rear, large living room, hall, dining room, and kitchen, with three bed rooms, bath and den, or sewing room, will strongly appeal to any family. The exterior has siding first story and shingles second story. Masonry not included.



Floor Plan, Style Villa

Base board and all interior finish clear Yellow Pine.
Front and rear steps.
Complete instructions and illustrations for erecting.
All hardware, locks, hinges, knobs, nails, and paint for two coats inside and outside.



SPECIFICATIONS

Size, 38 x 38 ft. Price, \$2,089. Cash Discount, 5%. Net Price, \$1,984.55. See Terms.

Height of ceilings, 9 ft. first floor; 8 ft. second floor.
All lumber selected Yellow Pine and Huron Pine.

Sill, 6 x 8 in.

Studding, 2 x 4 in. Rafter, 2 x 6 in., ceiling joists, 2 x 4 in.

Sheathing lumber.

Joists, 2 x 10 in. down and 2 x 8 in. up stairs.

Joists and studding placed every 16 in.

Flooring, 1-in., 3 inches wide.

Patent plaster board or lat and plaster.

Bevel siding first story, shingles second story.

Doors, outside, 2 ft. 8 in. x 6 ft. 8 in., inside, 2 ft. 8 in. x 6 ft. 8 in.; front door, special. Windows, 30 x 66 in., two sliding sash, double strength glass, and specials.



Floor Plan, Style Villa



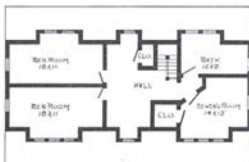
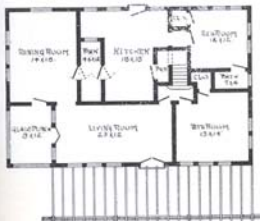
ALADDIN BUNGALOW THE ATLANTIC

THIS is an adaptation of our prize bungalow, altered to suit an individual buyer's taste. Has large living room across two-thirds of front. Glass porch, two sets of triple windows furnish front light, augmented by double window on side. Great porch runs across most of front; pergola type, with shaped front ends to rafters. Porch base finished with shingles, while side walls of bungalow are of siding. A two-story house, with plenty of light up stairs; roof raised for three dormers in front to accommodate one single window and two sets of three windows.

SPECIFICATIONS

Size, 45 x 30 ft. Price, \$2,314. Cash Discount, 5%.
Net Price, \$2,198.30. See Terms.

Height of ceilings, 9 ft. first floor; 8 ft. second floor. All lumber selected Huron Pine and Yellow Pine. Sill, 6 x 8 in. Studding and second floor ceiling joists, 2 x 4 in. Joists, 2 x 10 in. down and 2 x 10 in. up stairs. Joists and studding placed every 16 in. Flooring, 1-inch matched, 3 inches wide. Roof, 1-inch lumber, overlaid with shingles. Patent plaster board or lath and plaster. Doors, 2 ft. 8 in. x 6 ft. 8 in.; front door, upper half glass, 3 ft. x 7 ft. Window openings, casement and sliding sash, double strength glass. Base board and all interior trim and finish clear Yellow Pine. Front and rear steps. Complete instructions and illustrations for erecting. All hardware, locks, hinges, knobs, nails, and paint for two coats inside and outside.



Floor Plan, Style The Atlantic



Design No. 1 to 6

ADDITIONS TO ALADDIN HOUSES

THE additions shown on this page were designed to meet the demands which we have had in the past for additions to our dwelling houses. Several different designs are shown so the purchaser may select one that will be adapted to his requirements.

Design No. 1 to No. 6 can be used as a kitchen with pantry or as an extra bed room, as desired or will be very well adapted for an entryway with either pantry or bath.

Design No. 7 to No. 9 has an enclosed part which is suitable for a pantry or bath, and has an open porch.

Design No. 10 to No. 12 gives you an enclosed part for pantry or bath, grade cellar entrance, inside stairs leading from the kitchen and a commodious porch. Cellar, stairs and steps leading from the kitchen included in the price.

The exterior finish of these additions will be furnished to harmonize with the appearance of the house selected without extra cost, and gives the prices with and without plaster board or lath and plaster and interior finish of the enclosed part.

Style 1, size of addition, 8 x 10 ft. Price, enclosed part without lath and plaster or plaster board,	\$ 58.00
Style 1, size of addition, 8 x 10 ft. Price, with lath and plaster or plaster board,	66.00
Style 2, size of addition, 8 x 16 ft. Price, enclosed part without lath and plaster or plaster board,	74.00
Style 2, size of addition, 8 x 16 ft. Price, with lath and plaster or plaster board,	83.00
Style 3, size of addition, 10 x 16 ft. Price, enclosed part without lath and plaster or plaster board,	118.00
Style 3, size of addition, 10 x 16 ft. Price, enclosed part with lath and plaster or plaster board,	128.00
Style 4, size of addition, 10 x 18 ft. Price, enclosed part without lath and plaster or plaster board,	126.00



Design No. 7 to 9

Style 4, size of addition, 10 x 18 ft. Price, enclosed part with lath and plaster or plaster board,	\$137.00
Style 5, size of addition, 10 x 20 ft. Price, enclosed part without lath and plaster or plaster board,	134.00
Style 5, size of addition, 10 x 20 ft. Price, enclosed part with lath and plaster or plaster board,	146.00
Style 6, size of addition, 10 x 24 ft. Price, enclosed part without lath and plaster or plaster board,	148.00
Style 6, size of addition, 10 x 24 ft. Price, enclosed part with lath and plaster or plaster board,	162.00
Style 7, size over all, 6 x 14 ft.; enclosed part, 6 x 8 ft.; open part, 6 x 6 ft. Price, enclosed part without lath and plaster or plaster board,	56.00
Style 7, size over all, 6 x 14 ft.; enclosed part, 6 x 8 ft.; open part, 6 x 6 ft. Price, enclosed part with lath and plaster or plaster board,	62.00
Style 8, size over all, 8 x 16 ft.; enclosed part, 9 x 8 ft.; open part, 7 x 8 ft. Price, enclosed part without lath and plaster or plaster board,	78.00
Style 8, size over all, 8 x 16 ft.; enclosed part, 9 x 8 ft.; open part, 7 x 8 ft. Price, enclosed part with lath and plaster or plaster board,	86.00
Style 9, size over all, 10 x 18 ft.; enclosed part, 10 x 10 ft.; open part, 10 x 8 ft. Price, enclosed part without lath and plaster or plaster board,	116.00
Style 9, size over all, 10 x 18 ft.; enclosed part, 10 x 10 ft.; open part, 10 x 8 ft. Price, enclosed part with lath and plaster or plaster board,	125.00
Style 10, size over all, 8 x 16 ft.; enclosed part, 8 x 10 ft.; open part, 8 x 6 ft. Price, enclosed part without lath and plaster or plaster board,	89.00
Style 10, size over all, 8 x 16 ft.; enclosed part, 8 x 10 ft.; open part, 8 x 6 ft. Price, enclosed part with lath and plaster or plaster board,	95.00



Design No. 10 to 12

Style 11, size over all, 8 x 20 ft.; enclosed part, 8 x 10 ft.; open part, 8 x 10 ft.

Price, enclosed part without lath and plaster or plaster board, \$ 98.00

Style 11, size over all, 8 x 20 ft.; enclosed part, 8 x 10 ft.; open part, 8 x 10 ft.

Price, enclosed part with lath and plaster or plaster board, 104.00

Style 12, size over all, 10 x 20 ft.; enclosed part, 10 x 10 ft.; open part, 10 x 10 ft. Price, enclosed part without lath and plaster or plaster board, 103.00

Style 12, size over all, 10 x 20 ft.; enclosed part, 10 x 10 ft.; open part, 10 x 10 ft. Price, enclosed part with lath and plaster or plaster board, 113.00

DEPARTMENT OF SERVICE



D ID you ever really consider the wonderful difference in the meaning of the words house and home?

A house is a structure to live in.

Home — the dearest place on earth — is that structure that is a part of you — made so by its association with your family, their joys and sorrows, their hopes, aspirations, and fears. It is a refuge from the trials and struggles of the outer world. It is a visible expression of yourself, your tastes and character.

Perhaps you find it difficult to express yourself, your tastes, as you feel them in the arrangement, furnishing, and decoration of your home. You may not be sure of yourself. Right there is where our Department of Service can help.

This department is in the hands of people trained in planning and arrangement of artistic exterior and interior effects for the home—design, decoration, planning, etc. It is organized and maintained for a single purpose—to serve our customers. There is no charge for this service.

If you have a general idea of color in the exterior painting plan that you would like to follow, let the service department work out the details. In the interior finish and wall colors you may either put the responsibility entirely up to the department, or by suggesting general preferences, it will work to your suggestions and carry out the details.

By furnishing the department with the size of your grounds, sketches will be worked out for attractive planting of shrubberies, plants, trees, etc., with lists of seeds and vines.

In fact, the Department of Service will help to make your "Aladdin" house home, in every sense possible.

Example of Plan Furnished by
Landscape Branch

In seeking this service you have only to address the Department of Service, care of this company.

WHAT OWNERS OF ALADDIN HOUSES THINK OF THEM

THE accuracy of every one of the following statements is vouched for by the North American Construction Co. We do not wish people to write to Aladdin customers out of idle curiosity and have, therefore, omitted the names. However, we will, upon request, cheerfully give the name and address of any one of the following customers so that you can prove the statement by a letter or a visit to the customer:

"Port Jervis, N. Y.

"I have as cosy a place as any one could wish for (truly an Aladdin house), for it seems as if it were only yesterday that I ordered it. It is a source of delight to me and the object of admiration and surprise to my friends and neighbors. The material was all that you advertised. Local builders were surprised when told how much the house cost; could not duplicate the lumber for double the price in any of the local lumber houses.

"The carpenter had no trouble at all in fitting lumber; he simply marveled at the simplicity of putting it together. He claimed that there was studding enough in my house to supply a house again the size, so I can rest assured that I have a house that's built for strength and service. If all purchasers are as satisfied as I am, you can rest assured that the future for Aladdin houses is nothing but success."

"Hawthorne, N. J.

"In response to your letter will say that I am well pleased with your system of construction, as I estimate a saving of \$500, and should I have any more building to do in the future you will surely hear from me."

"Broken Arrow, Okla.

"I saved \$299. If I was going to build another house, I assure you that you would get my order. Yours for success."

"Plainville, Ill.

"I am well pleased with the Maples and can fully recommend it to any one wishing a house of its style. I erected it by myself and had no trouble at all, for everything went together all O. K. and there was no shortage or anything. I saved at least \$500.

"Wishing you success, I remain."

"Middletown, N. Y.

"I had a nice porch built on rear, as I had plenty of lumber and nails left over from material you sent me for my Style H-2 Aladdin house. I saved about \$800."

"Dayton, Ohio.

"In regard to the erection of your Portland house, am glad to say that I found everything as was stated. The cost of the house complete was \$956. I saved \$500, and I found this amount represented the middlemen's profit.

"Every piece of lumber was cut and sawed to fit, saving a considerable amount of time and labor in its erection. I made one mistake when I paid two experienced men four dollars each for a day's work, when two inexperienced men could have done the work just as well and would have saved me about a hundred dollars; but I am well satisfied at that, because I have a complete house for \$956.

"This method of construction I believe to be the best, cheapest, and quickest method of building houses I know of, and I say this because you get a complete house for a smaller sum than any other way of building. Please send me your new catalog, as I would like to build more of your houses."

"Chicago, Ill.

"In the Maples, I have one of the best little bungalows in the whole city of Chicago, and all who have called express the same opinion, and I should imagine all have called whom you have advised by card.

"At first we took pride in showing prospective buyers all through the house; but Mrs. ——— is not strong, and of late we have encouraged outside inspection and advised that all interior lumber and finish is even better than you guaranteed, and that your dealings with us have been very favorable. I have saved at least \$900."

" I have worked at the trade for twenty years and never saw any building go together nicer. We didn't have any cutting to do; every piece went to its place, and you sent a very good quality of lumber and plenty of it to finish the house. Saved about \$300."

" Wyoming, Del.

" I am answering your letter to let you know what it cost to erect my house:

" Wayne, Mich.

Days of erection,	12
Number men employed,	1
Cost of labor, \$3 per day; 12 days,	\$36.00

" It cost me \$400 for the house ready to move in, with the chimney, painting, freight, and all. I saved about \$200 on my house. There is nobody who could build a house like I got for the money. I priced it in my home town; they wanted \$600 to build the same house, so I saved \$200, I am very glad I took your word. Two hundred dollars looks good in my pocket.

" I am,

Your satisfied customer.

" Liverpool, N. Y.

" Yours of recent date received and in reply will say that I am highly pleased with your system of construction, as I have not only been able to secure lumber at a reduced price, but myself and one unskilled workman, after thoroughly studying your plans, found no difficulty in the erection of the house, thus saving the expense of mechanics' wages. I found no shortage of material, and everything proved to be as recommended."

" Ossining, N. Y.

" Almost every day visitors are coming to see the house, and I am more than pleased to recommend your firm and the honest and gentlemanly treatment we have had at your hands.

" Before purchasing the house of you I wrote to at least six different people who had bought your houses, in as many different parts of the U. S., asking about you. In every case they had only words of praise. Now, I shall consider it a privilege to give any who may request it our experience in buying a ready-cut house. We could not have built and bought the lumber here, so whenever we look about us we have to thank you for making it possible to own our own little home.

" A gentleman from Ossining told me we would have no trouble to get \$3,000 for it if it were there. We have a neat fence from the Republic Fence Co. of North Chicago, which, painted green, adds much to the looks. Our hipped roof porch in front adds to the looks of the house, too.

" Thanking you again, and hoping I may be able to help you in some way, I am.

" White Cloud, Kan.

" I find your house the easiest house to erect I ever saw. I never had the least bit of trouble with any part of it in any shape or form; every piece fit just like paper on the wall, and I think your method of cutting material the very best that could be got up and I think that any man who knew his letters could erect any house in your list as fast as he could drive nails. Yes, sir, I like my house just fine, and I think it a great money-saving thing."

" Denver, Iowa.

" The house is all you claim it to be. I saved \$390."

" Linden, N. J.

" Was very much pleased with all material I received from your company. I saved \$500."



SCREENS AND STORM SASH

FIRST quality screens will be furnished with any house in the catalog at the following prices, fitting each individual window, regardless of size:

Half screens, 60 cents per window. Full screens, 90 cents per window. Screen doors, extra quality, \$1.25 per door.

Storm sash of four-light glass will be furnished for any window in house, regardless of size, at the following prices:

Storm sash, 90 cents per window. Storm doors, glazed, \$1.90 per door.

CHIMNEYS

A chimney of any material can be built in any Aladdin house exactly as it would be built in any good dwelling house. It can be located at any point in house desired by you. Our houses can be heated with furnace, stove, boiler, or fireplace.

You would think it strange to see nowadays a carpenter making his own doors, making his windows, sash, porch columns, etc., instead of buying them from the sash and door factory, where they are made by machinery so much better, so much cheaper, and quicker. It was not many years ago when all these things were made by the carpenters by hand. These doors, windows, columns, etc., can be produced cheaper in the mill because of labor and time-saving machinery. Just so with the Aladdin house — the complete house. It is prepared in our mill, just as the door for your ordinary carpenter is prepared — ready to be erected, quickly, easily, and at a big saving in labor and time — which means a saving in money — your money.

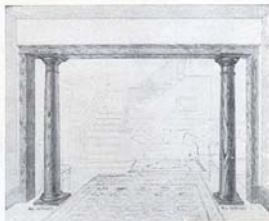
Five hundred dollars will do exactly the work of seven hundred and fifty dollars, possibly more. Five hundred dollars for an Aladdin house complete, and purchased direct from the manufacturer — or seven hundred and fifty dollars spread out thin to your lumber yard, planing mill, hardware dealer, plasterer, contractor, and carpenter — which shall it be? As profits to these different individuals — or in your own pocket.



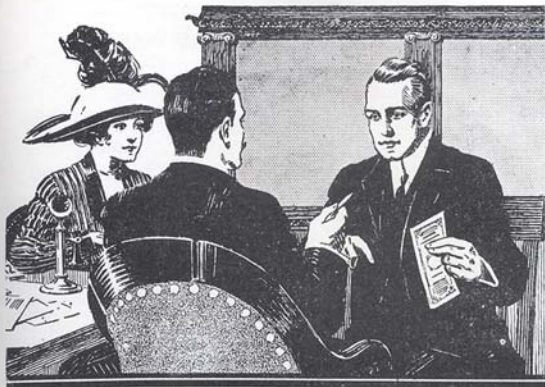
Design of Inside Doors in
all Aladdin Houses



Design of Arch



Design of Arch



“COME, LET US REASON TOGETHER”

THE Aladdin plan has appealed to you strongly — there can be no doubt about that fact.

It is altogether likely that you are enthusiastic about it.

You will probably talk to your friends about it and tell them how good it looks — tell them of the many advantages of the plan.

In talking to a friend, or asking advice from a lumberman, contractor, or architect, we suggest two things:

First: Write down each question asked of you, and which either you cannot answer, or this catalog does not answer. Make a note of any objection that may be raised to the plan, the system of construction, or the material. Pass those questions on to us. We are eager for a chance to answer them.

Second: You will find people who will be antagonistic to our plan—to us. Look for the motive behind the antagonism — you will find it. The motive in each case will be self-interest.

If a merchant, perhaps he doesn't like the mail-order business. If a contractor, he sees a possible contract lost; if a banker, he may be personally interested in a local lumber yard — you will find a motive every time.

But listen to them, make notes of their arguments, hear what they have to say, we will be only too glad to answer all questions.

In talking with others about Aladdin houses it is always better to show the catalog at the same time. Few people really understand the wonderful facts about Aladdin houses until they really see the catalog, see the high-class houses it contains and read the descriptions.

Perhaps you haven't thought of the exact similarity between the Aladdin system of construction and the modern skyscraper system of construction. They are identical.

All the steel frame work for those immense office buildings is cut to fit in the steel mills, beams fashioned, holes drilled, marked, and numbered and assembled, erected and riveted together on the job.

Will any one say that the steel building is not practical, is not a success?

And yet how much simpler is the construction of the ordinary frame house. The Aladdin system is simply exact science applied to house building. Scientific design to eliminate wasteful lengths of material being necessary to build the house.

Scientific cutting of lumber to utilize every inch in the log.

Scientific salesmanship, to eliminate unnecessary profits — to useless middlemen.

Science seeks to find the shortest route between two points — cause and effect.

Scientific business management seeks to find the lowest cost between raw material and the consumer.

The Aladdin plan has achieved this.



SUMMER COTTAGES, GARAGES, SUN PARLORS, SLEEPING PORCHES, TRELLISES, PER- GOLAS, AND ARBORS

A SPECIAL Aladdin Catalog, No. 99, is devoted exclusively to summer cottages of various sizes, prices, and designs. It also carries some very handsome garages.

This year we have added Sun Parlors, Sleeping Porches, Pergolas, Trellises, and Arbors to our line of manufacture. These latter products are the works of well-known artists, experienced in design. You will be delighted with the picturesque suggestions for improvements to your house and grounds.

If interested, you have only to send a request for this handsome book and it will be sent promptly and without cost to you. We will be glad to send it to any friend who you know will be interested.

