

ALADDIN

Sold By The
**GOLDEN
RULE**

READI-CUT HOMES





ALUMINUM PRIMING IS *Better* PRIMING



THE ALADDIN COMPANY

Founded 1906
By W. J. and O. E. SOVEREIGN
HOME OFFICES AND MILLS
BAY CITY, MICHIGAN

ALADDIN ALUMINUM PROTECTED LUMBER

Every ALADDIN Home is now
protected with a metal coat of
ALUMINUM

This Adds Years to the Life of Your Home

One of Aladdin's greatest recent advancements in Quality Construction Methods is the furnishing of a coat of aluminum for all material subject to weather. This coat of high quality aluminum priming paint is furnished for all siding and outside finish exposed to the weather. Your home will have a metal coat of protection on all exterior surfaces. This forms the strongest known protection against the ravages of weather, dampness, age or other damage. It also forms a perfect undercoat for our high quality paint. A paint job is only as good as its primer. It gives the most perfect protection to our certified and guaranteed knotless siding and knotless outside finish.

ALADDIN Homes Lead in Value, Scientific Accomplishment and True Distinction.

To own a home, having the protection, value and benefits of the latest scientific accomplishments, is a matter of pride and satisfaction.

To be one of the first in your community to own such a home is a distinction and is evidence of leadership.

The silvery flash of the Aluminum metal coat, as your home is under construction, gives notice to the world that here is a home different, sounder and more distinctive than any home around you, regardless of size. It gives notice that here is a home whose every board, which is exposed to the weather, is covered with a coat of metal protection.

The millions of tiny Aluminum flakes, by leaving together, form a continuous coat of metal protection. They keep out moisture and add years of life to the surface to which they are applied.

Copper flashing is furnished for use under the drip cap on all outside doors and windows. Copper valley flashing when required is used when wood shingles are furnished for the roof.

IMPERISHABLE COPPER and ALUMINUM Guard Your ALADDIN Home Against the Ravages of Time and Weather.

BRANCH OFFICES AND MILLS
PORTLAND, OREGON and TORONTO, CAN.

CATALOG NO. 50

All Rights Reserved
Copyright 1930

What Our 31 Years Experience Means to You When Building a New Home



O. E. SOVEREIGN, Gen. Mgr.

THE ALADDIN COMPANY was started thirty-one years ago by W. J. Sovereign and O. E. Sovereign who perfected and established the First Read-cut System of Home Building in the world.

Today, as in the past, the company is still managed and owned by these two brothers. Customers of thirty-one years ago may write to The Aladdin Company today and know that the management is unchanged, and that they are writing to and dealing with old friends.

Their vast experience in the wants and needs of homebuilders, in the choice of the best materials for their use, in the preparation and manufacture of the lumber is of tremendous value to every customer of Aladdin. The Sovereign Brothers are ready to give you their personal time and assistance to guard you from the mistakes so often made by inexperienced homebuilders. This service costs you not one cent extra. It is included as a part of every Aladdin transaction.

The Read-cut System as originated by The Aladdin Company has been approved by the United States Government, the Michigan State



W. J. SOVEREIGN, President

Government, and hundreds of big corporations by large purchases of Aladdin Houses. This company manufactured and shipped the first complete read-cut home built in the world.

The Aladdin Company owns and operates mills in Michigan and Oregon, which are the largest lumber markets in the country.

What You Get When You Buy An ALADDIN House



A careful reading of the following will give you a clear idea of the completeness of materials and equipment which are included in the price of Aladdin Houses.

You also receive our thirty-one years of home building experience to guard you against mistakes of any kind.

It has taught us the best construction methods, the best materials to use, the best way to prepare the building plans so every step of erection can be followed even though you have had no previous experience in building. And to complete our service to you, we pay the freight and guarantee that you will receive sufficient of all materials to complete your home according to the plans and specifications.

Read the Following Carefully: You Receive:

Foundation Sills cut to fit.
Floor Joists cut to fit.
Sub Floor Sheathing cut to fit.
Wall Studing cut to fit.
Wall Sheathing cut to fit.
Partition Studing cut to fit.
Ceiling Joists cut to fit.
Rafters cut to fit.
Roof Sheathing cut to fit.
Roof Ceiling cut to fit.
Building paper between sub and finished floor.
Finish Floor 25¢ Tongued and Grooved.
Building paper between wall sheathing and siding.
Siding squared ready to fit against casings and outside finish.
Cedar shingles instead of siding if preferred.

Outside finishing lumber cut ready for fitting.
Crown, bed, cove and quarter round moldings.
Water table and drip caps for exterior.
Window frames complete with inside and outside trim.
Glass in window sash ready to hang.
Door frames complete with inside and outside trim.
Doors mortised ready to receive lock sets in casings.
Baseboard and base shoe for all rooms.
For two story houses stairways, treads, risers, stringers, newel posts, balusters, molding, etc. cut to fit—boxed ready for erection.

Cellar Stairs where shown—all materials cut to fit.
Entrance steps cut to fit.
Nails of proper size.
Mortised lock sets.
Door Hinges.
Double acting door set.
Metal Door Bumpers.
Sash Weights.
Sash Pulleys.
Sash Cord.
Sash Locks.
Sash Lifts.
Copper for window and door flashing.
Slate surfaced roll roofing or slate surfaced shingles.
Valley, hip and ridge flashings as needed.
Paint—three coats.

Under coat aluminum paint. Other coats any colors desired.
Turpentine.
Putty.
Interior Stairs.
Interior Siding.
Porch joist, porch flooring, steps, columns, balusters and porch roof sheathing and ceiling cut to fit.
Foundation plans and foundation instructions.
Complete set detailed blueprints showing every step of erection.
Copyrighted book of printed instructions and illustrations describing every step in erecting and completing the house.

*"Quality is remembered long
after price is forgotten"*

No Quality Can Exceed in Value ALADDIN'S Famous DOLLAR-A-KNOT Lumber

A new standard of lumber quality has been given to the world by Aladdin's famous "Dollar-A-Knot" guaranty.

The "good enough" lumber grades, the "anything will do" grades and the multitude of substitutions for clear, knotless lumber have been shown up.

You cannot be expected to understand the complications of lumber associations' grading rules; how many circles, hearts, rings and barks make a good log nor how many knots, spots, pitch pockets or worm holes there will be to a board.

There are none of these defects in your dollar, and there should be none in what you trade your dollar for.

I'll Pay \$1.00 for Every Knot

I'll pay \$1.00 for every knot any customer can find in our Red Cedar or Redwood Siding. I stand ready to prove to you in this way that the lumber in Aladdin Ready-Cut Houses is higher in grade throughout than is regularly carried by any seller of lumber in America. Further, we guarantee that you will receive clear and knotless siding, clear and knotless flooring and clear and knotless interior finish for every Aladdin Dwelling House.

O. E. Sovereign, Gen. Mgr.
The Aladdin Company

Knotless Means Just What It Says

"A-Dollar-A-Knot." Could any guarantee be plainer or more forceful or more effective. You know a knot when you see it and you know it makes a board less valuable. And when we guarantee Aladdin lumber to be knotless, or guarantee "A-Dollar-A-Knot" for our red cedar or redwood siding, you know that your lumber is going to be the very highest grade taken from the forest.

Golden Rule Service

Every tree has some clear lumber in it. It's the best part of the tree. It is the purest part of the product. Aladdin houses are built on the highest quality and all exposed lumber is taken from the best part of the tree. Our framing lumber is straight, well seasoned and sound. Aladdin houses are built on highest quality, and Golden Rule service to the customer. Aladdin has commandeered the knotless parts of the finest trees—the unsurpassed quality of defectless lumber.

ALADDIN'S MATCHLESS GUARANTY

What Induces Us to Supply such Matchless Quality.

Aladdin believes the modest home merits the same goodness as the mansion. It should be built of material to last as long as the biggest homes. We intend to nail Aladdin quality on the highest attainable pinnacle and keep it there.

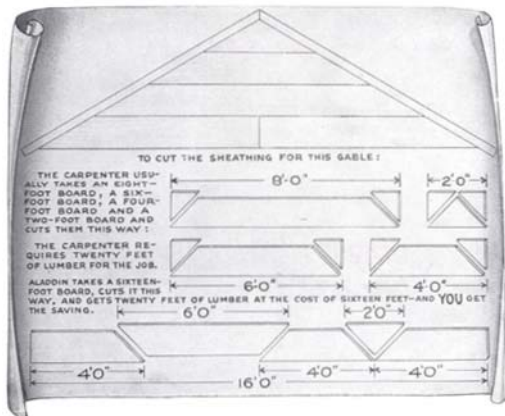
While these are excellent reasons for the careful, thinking home buyer, the real undebatable reason is summed up in the goodness, soundness and the thoroughness of the quality of Aladdin Houses.

The Service Aladdin Offers

You receive a scientifically designed home; a scientifically manufactured home; the benefit of buying power, thousands of times greater than your own. You receive the safeguards of our experience. You are guarded against costly extras. You have our help in keeping costs down. You save many days time. You save costly waste. You receive everything complete for your home in one shipment. You know exactly what your house will look like when completed. You save all architectural fees. You are assured prompt shipment and quick erection. You receive a bona-fide guarantee of complete satisfaction.



How the ALADDIN REDI-CUT System Saves You Money By Getting Twenty Feet of Lumber from a Sixteen Foot Board



Remember that the Lumber that's Wasted Costs You Just as Much as the Lumber that's Used.
ALADDIN Saves 18% Lumber Waste.

FACTORY CUTTING AND FITTING—SAVES LABOR

An Aladdin REDI-cut Home saves you from thirty to forty percent in your labor bill because the carpenter does not have to spend his time working out the construction details, and cut all the lumber by hand. Our complete drawings give him construction details that have been proven the best over a period of thirty years. When building the Aladdin Way, you save all the time used by a carpenter in measuring, cutting, trying and fitting, because all of this work has been done in our factory by modern machines. A machine cut Aladdin home is better built, stronger and more substantial and it will give you a lifetime of satisfaction.



ONE MAN EQUALS
SIX CARPENTERS

QUANTITY BUYING

Because of the tremendous amount of building materials we purchase each year, we are in a position to buy at the lowest possible prices. The large quantity purchased makes it possible for us to obtain prices far lower than any company or individual who has a demand for only a few homes each year.

When the finest grades of materials are used, you are assured of the highest kind of an investment in your home. We never, in any case, sacrifice quality for price or profit. Aladdin Certified Lumber is guaranteed to be satisfactory.

STANDARD SIZE MATERIALS SAVE WASTE

We save you eighteen percent in waste because our homes are designed to use standard sizes and lengths. Also all mill work, doors, windows, etc., are manufactured to standard sizes thus making it possible for us to produce them in tremendous quantities. Naturally with the large production and modern factory manufacturing methods, we effect a saving for you on all of the items entering into the construction of your home. All lumber used in Aladdin homes is a standard size as adopted by The National Association of Lumber Manufacturers.

Why Some Lumber Dealers And Contractors Talk Against Readi-Cut Houses

IT'S the simplest reason in the world. They have no chance to make a profit on the house you buy from The Aladdin Company. You keep the profit in your own pocket that you would ordinarily pay to them. When the local lumber dealer says, "Don't buy your lumber out of town," ask him where he buys the lumber he wants to sell you. You see he buys his lumber up here and the only money that stays in your town is his profit. Many contractors don't like readi-cut houses because they lower labor costs about one-third. They, therefore, make less money building one.



Showing Simple Plan of Laying Out Materials

One of the most amusing remarks made is that the builder of an Aladdin home will lose as much time hunting out his material and finding the right pieces as he will save by the Readi-cut System. Any thought about time lost in hunting for pieces will be found untrue when you see the simple system of laying out materials given in our Instruction Book with every home.

VOLUME—THE MAGIC WORD

The first rule in the decalogue of manufacturing is: **To lower the cost, divide the several parts of the labor employed into simple, specialized, mechanical operations.**

But this won't work without the mystic word. And that word is "VOLUME!"

Your local contractor may build ten houses a year. Could he afford to invest \$50,000 in one machine to lower his cost on the ten houses twenty per cent?

"Volume" of business makes possible the

highly specialized machinery found throughout the Aladdin mills; makes practicable the investment of \$10,000 in a single machine which will lower the cost \$5.00 on a house!

But that \$5.00 is multiplied twenty to thirty times on each house and it saves every buyer of an Aladdin from \$100 to \$200 on construction cost alone.

ALADDIN FIRE STOP CONSTRUCTION

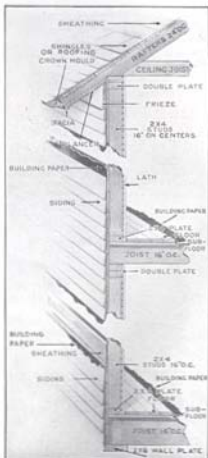
Aladdin fire stop construction is recommended by The Fire Insurance Companies and is used in all Aladdin homes. By referring to the sketch at the right, you will readily understand the advantages in our fire stop construction. The studs do not run from the foundation wall up to the attic. By using 2" x 4" plates, drafts are eliminated and fire cannot run up thru side walls.

MASONRY, CHIMNEYS and FIREPLACES

Chimneys can be located anywhere in the house you like for we do not cut our materials for these openings. If you do not want the fireplace which may be shown in the photograph and floor plan arrangement, you need not build it. Brick, stone, cement and plaster can be had in your locality as cheaply as we could furnish it. We furnish you a foundation plan which shows you exactly how to proceed to build your foundation. Any of our homes can be built on a pier or post foundation if desired.

PLANS CAN BE REVERSED

Any Aladdin Plan can be furnished reversed. A reversed plan would place all of the rooms on the opposite side of the home from that shown in the catalog plan. In a reversed plan the rooms now on the right hand side would be on the left hand side and those on the left hand side would be on the right hand side.



Aladdin Fire Stop Construction

How To Finance Your ALADDIN Home

If you are in need of help to finance your Aladdin Home, we are ready to help you.

The first thing for you to do is to select the Aladdin Home which you like best and either fill out the enclosed information card, or write us a letter about it. We will reply to your letter immediately and give you all the information you would like to have.

Aladdin is ready to give you every assistance in financing your Aladdin Home through F.H.A. or Building and Loan or through a bank.

Our specifications will be made to conform to the strictest F.H.A. requirements under the government plan.

Here are four ways to secure an Aladdin Home:

1—Cash with Order. A two percent discount will be allowed for full cash with order. Just send your check, bank draft, postal or express money order with your order.

2—Part Cash—Balance C. O. D. If you cannot send us the full cash with order, but will have the money ready when your materials arrive, send us a deposit of one-quarter or twenty-five percent and you can pay the balance thru your bank when the materials arrive. No discount is allowed under this plan.

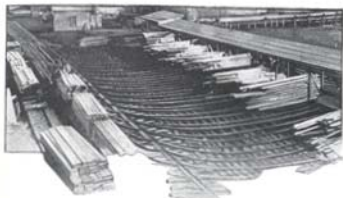
3—Deposit Money in Your Local Bank. When you have your order made out and know what the total is, deposit this amount in your local bank. Have your banker write us stating that the amount will be sent us when your materials arrive, or if you wish to inspect the materials, his letter should state that the payments will be made five days after the materials arrive. We guarantee the quality, quantity and the safe arrival of all materials to your railroad station.

4—Fire Insurance Losses. If your home has burned, and you do not wish to wait for your money from the insurance company, we will ship your home immediately if you will get a letter from your insurance company to The Aladdin Company agreeing to pay us for your materials when your insurance money is available.

ALADDIN'S Service to the Homebuilder

ARCHITECTURAL PLAN SERVICE

This catalog contains plans and designs that are the best that home planning experts and building engineers know how to design. In our plans every inch of available floor space is used to advantage. Because we standardize on the homes shown in our catalog, we can make hundreds of blueprints from one set of drawings, thus making it possible for us to give you this plan service absolutely free with your home. Should the design you select require slight changes, we will, if practical to do so, make them for you at actual cost.



Loading Yard of the ALADDIN Mill Railroad that Transports Lumber from the Yards to the Mill

QUICK SHIPMENT

We can ship any regular home in this catalog within five days after we receive your order. The average time required for delivery after leaving the factory is from three to five days. We prefer to be given a little more time if convenient to you.

COMPLETE IN ONE CAR

All homes and summer cottages are shipped complete at one time in a sealed box car from our mill at Bay City, Michigan, or Portland, Oregon, whichever is nearest to you. We send complete instructions for unloading the car so everything can be placed in convenient piles on your lot.



LATEST METHODS in Home Building

*Gone Are the Ancient Hand-Saw Ways
of Building Homes*

**Alert Home Builders Profit by Newest,
Up-to-the-Minute Construction Efficiency**

**READ HERE HOW TO CONTROL
YOUR BUILDING COSTS**

WASTE can and does influence the cost of everything you buy. This is especially true of home building.

Waste consumes your dollars and gives nothing in return. Aladdin proves to you that the Readi-cut System will save about \$18 out of each \$100 on your lumber costs.

Aladdin proves to you that the Readi-cut System will save you about \$30 out of each \$100 labor cost.

When the customer buys direct from the manufacturer there are no middlemen's cost and profits in the price he pays.

You can buy your house direct from the manufacturer. You can save the costs and profits of middlemen. You can save from \$200 to \$1,000 on the materials. This is your good money that would otherwise go into the pockets of middlemen.

Why shouldn't you save these profits, like thousands of other homebuilders have been doing through The Aladdin Company for the past thirty years?

You KNOW in advance what the materials for your house will cost you. You KNOW there will be no shortage of materials—nothing forgotten. You KNOW you will not be paying for more materials than will be used and that you will save the price of all "short ends" that are wasted by the old system.

You KNOW you will receive high grade lumber, millwork, hardware—Aladdin CERTIFIED materials. You KNOW everything

will be on hand when you want it—all in one shipment and all guaranteed by Aladdin. And you KNOW in advance what your house will look like and what it will be in every way.

KNOWING gives you control—mastery of your money, of materials, of labor and of **RESULTS**.

Buying an Aladdin Home is the safest, easiest and wisest way to build.

Aladdin houses are sold from this catalog and built in every State in the Union. Varying weather conditions and the personal needs of the builder can easily be met by us with such changes in our specifications as you may wish.

ALADDIN Service Department

Aladdin Service Department will assist you with color suggestions for decorating your home both outside and inside. Write us about it.



Interior on left shows our attractive Virginia home while that on the right illustrates our Madison.





THE MADISON — A True American Home —

Price Given
On Enclosed
Price List

And We Pay
The Freight

It would be hard to find a more charming home than the Madison. The roof lines are especially well proportioned. Many letters have been received from enthusiastic owners of this lovely home. It can be purchased in your choice of three different sizes and plan arrangements. The prices quoted are for siding or shingles on the exterior. If you wish to use shingles on the outside walls as shown in the illustration, advise us when ordering. An interior view of the Madison is shown at the bottom of Page 8. With the Madison home you receive 6" x 8" built-up girders, 2" x 8" floor joists on 16" centers a one-third pitch. Asphalt strip shingles are furnished for the roof at the quoted prices. Complete detail specifications mailed on request.



PLAN B

Plan "B," a perfect two bedroom arrangement that will go on a 40-foot lot. Big value for every invested dollar is surely represented here.

With all Madison plans we have arranged for a vestibule at the front giving space for coats as shown in plans below. A French door is furnished between the living room and vestibule and the outside door is a circle top door same as we show for our Stratford and University homes. This vestibule arrangement is included in the prices quoted for the Madison home.

The Construction Used in an ALADDIN HOME Is the Same as That Used in the Best Architect-Designed, Contractor-Built House Erected Anywhere



PLAN C

Plan "C" is size 36 x 24 feet over all. A wonderful 22-foot living room and large dining room feature this plan.

—
SAVE
WASTE
—
SAVE
TIME
—
SAVE
MONEY
—



PLAN D

A beautiful three bedroom home, size 36 x 24 feet over all. Many buyers tell us they have saved a good thousand dollars or more on this house.



THE COLONIAL — Designed for Economy —

Price Given
On Enclosed
Price List

And We Pay
The Freight

This lovely home of true Colonial inspiration is commemorative of the early years of the last century when simplicity and economy were so important to home builders. It avoids decorative frills while abounding in vitality and form.

We have shown two interior arrangements, a choice between a home with basement and one without. Plan No. 1 has a generous sized living room with space well located for heater or stove. The kitchen provides adequate

location for breakfast room set or dining table, and ample space for cabinets, stove and sink. Two bedrooms, bath room and three closets complete the plan.

Plan No. 2 incorporates all of the above features but in addition, a cellar stairs is shown to basement. Should a stairway be desired to attic, it can be furnished on request by omitting the linen closet, and the stairs will lead up from the hall.

Detail specifications mailed on request.



PLAN No. 1



PLAN No. 2



THE GEORGIAN—A Popular Brick Veneer—

Price Given
On Enclosed
Price List

And We Pay
The Freight

An important factor in the important matter of choosing a new home is the selection of a design that will wear well through the years. There are several types of architecture whose excellent proportions, true harmony of detail and particularly, adherence to detail, have carried them successfully through many generations. Such is that represented by the Georgian shown on this page. Its chief motif is drawn from the severe Colonial times when simplicity was considered among the chief virtues. And simplicity in such cases adds high values for it likewise achieves economy of cost and maximum space and convenience. The Georgian's glory is the fascinating design of its front entrance. Two fluted pilasters border the door which is surmounted by a truly proportioned gable, with projecting moulds and dentals. The door itself is in perfect harmony with the whole.

The Georgian interior presents a study in living perfection. Not a single desirable feature of the modern home is missing. Every desirable thing is present. A charming entrance hall greets the visitor, with arched entrance to living room and direct access to the kitchen. Semi-open stairway inconspicuously decorates this room. A cloak closet is located at just the right spot. Four windows give generous light and air to the living room, which is joined to dining room with a curved arch. Grade cellar entrance completes the downstairs facilities. The second floor presents three fine bedrooms, all with two exposures and splendid closets. The bath is of generous dimensions. The Georgian is priced for use of brick veneer on the outside walls. We will be glad to quote on furnishing wide siding if you prefer a siding exterior. Complete detail specifications sent on request.

Manheim, Pa.

Dear Sirs:

I have been recommending your homes and wish you would send catalogs to the names I am enclosing. I have many callers to see my home which we are enjoying. We feel as though it were a \$10,000 home.

Jeremiah Earhart.



FIRST FLOOR—THE GEORGIAN



SECOND FLOOR—THE GEORGIAN



THE POPLAR—A Quaint Colonial Bungalow—

Price Given
On Enclosed
Price List

And We Pay
The Freight

A true Colonial atmosphere is present in the design of this delightful bungalow. You will be proud of the genuinely honest construction, sturdy timbers and beautiful interior woodwork. Originality is expressed in the roof lines. Exposed rafter ends lend a touch of individuality while the general proportions of the structure are most harmonious. Four plans of the Poplar are shown below. In some of the plans a door is shown in the side of the living room in order to give access to the pergola porch. In other plans a window is shown. In any of the plans you can have either a door or window depending upon whether or not you wish to order the pergola porch. There is no charge for this change from door to window or window to door. The 14' x 8' pergola porch has weather tight roof. It is priced separately so it can be purchased with your home or not, as you prefer. When the width of the building lot prevents using the porch at the

side of the house as pictured, it is often built on to the front of the house. This arrangement also provides a very attractive appearance.

Ceiling height 8 feet. The roof has a one-quarter pitch. Complete detail specifications mailed on request.



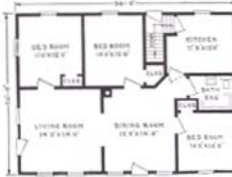
PLAN C



PLAN G



PLAN D



PLAN F

Auburn, Calif.

Dear Sirs:

I will be glad to tell others about my Aladdin home. We are pleased in every way with the house and the way it went together. I have assured myself that I have saved between \$800 and \$1000 by not having a contractor. I expect to build another of your houses to rent.

S. P. Campbell.



THE SHELBURNE—Fascinating in Detail—

Price Given
On Enclosed
Price List

And We Pay
The Freight

The Shelburne was first erected in Bay City and opened to the public by Aladdin as a Model Home. Public approval was instant and unanimous and confirmed the good judgment of our designers. It is modeled along ultra modern lines, strong colors and contrast in the chimney, enlivening the picture from the approach. An intriguing front door, with circle top and embellished with large antique hammered hinges adding distinction to the entrance. The interior presents facilities of every nature for a family of six. The living room has three exposures, being 26 feet in depth by 15 feet in width. Curved arches lead to dining room and hallway, where you enter the downstairs suite of bedroom and toilet. Note the light, airy kitchen. Semi-open stairway leads to second floor where you find two grand bedrooms, bath, linen closet and ample clothes closets. Complete detail specifications will be sent on request.



SHELBURNE—FIRST FLOOR PLAN

Dear Sirs:

Manhattan, Mont.

Yes, you may refer anyone to us. We are very well satisfied with our home. It is located about five miles east of Manhattan, Mont.

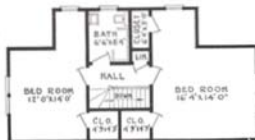
J. G. Baynes.

Troy, Ohio

Dear Sirs:

I am proud to say that I built my house without the help of a carpenter. There are not words enough to tell what I think of ready-cut material. It's the only way to build.

Walter H. Stoner.



SHELBURNE—SECOND FLOOR PLAN



THE BREWSTER—Beautiful in Its Simplicity—

Price Given
On Enclosed
Price List

And We Pay
The Freight

Supremely good taste was employed by our designers when they formulated the Brewster. It is a choice architectural gem, clean in line, employing a form of simple beauty and exquisite simplicity. It is truly a work of art yet most practical in execution for its very simplicity is reason for its astonishingly low cost.

You receive highest quality materials, lowest prices, prompt shipment and a guarantee covering quantity, quality and safe arrival.

Waste of materials is eliminated, every foot of lumber giving 100% value in space, convenience and comfort. The columned and hooded entrance incorporates a commodious vestibule. The choice of two interiors are afforded you, each with about the same facilities but differently arranged. Each has excellent living room, two bedrooms, dinette, bath and closets.

If you have a preference for shingled outside walls we can also meet your wishes. While a brick foundation is shown in the above picture, the foundation can be built of solid concrete, concrete blocks or tile. Wood shingle roof is also available on request.

The Brewster is furnished with 6" x 8" built-up girders, 2" x 8" joists on 16-inch centers and 2" x 6" rafters. Complete detail specifications will be sent on request.



Lyons, N. Y.

Gentlemen:

We will be glad to have you refer any customers you wish to us. We are pleased with our house and will show anyone thru and answer letters of inquiry. We are enclosing photographs of our home which we believe is better than the one in your catalog.

J. F. Schnabel

An Aladdin Home is Safer than a Wall Street Investment





Brewster Living Room

Above is shown a photograph of the living room of the Brewster which is described on the opposite page. Note the surprising spaciousness of the lovely room afforded in this modest sized Aladdin home. The two mullion windows are well proportioned and give generous light and air. Below at the left is shown the cozy dining alcove, large enough to seat six or eight people. At the right, below, is an interesting picture of the bathroom in the Shelbourne which is described on page 13. You can have just such beauty in your Aladdin home.



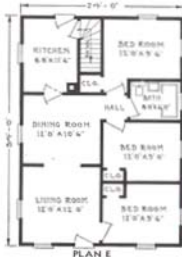


PLAN D

SAVE
WASTE

—
SAVE
TIME

—
SAVE
MONEY



PLAN E



Both plans of the Larchwood home are models of the Economy of Space in plan arrangement. The gable roof of porch gives distinctiveness to this fine home. You will notice two different sized plans are shown for the Larchwood. One plan has two bedrooms and the other plan has three bedrooms. We will welcome your inquiries

THE LARCHWOOD—

Price Given
On Enclosed
Price List

— And We Pay
the Freight

about this typically American home. Complete detail specifications mailed on request.

THE CYPRESS—

Price Given
On Enclosed
Price List

— And We Pay
The Freight



Here is a little gem of a home which has been built thousands of times during the past twenty years. No greater value for your investment could be possible than is shown in the picture of the Cypress and the choice of three floor plans. Any one of these can be erected easily by inexperienced men, assisted by our easily understood drawings and instructions. Write us about the one of your choice. Complete detail specifications mailed on request.

Paying Cash Is One Big Reason for These Low Prices



PLAN B



PLAN D



PLAN F



THE HAWTHORNE—Astonishingly Priced—

Price Given
On Enclosed
Price List

And We Pay
The Freight

The Hawthorne is a fine example of the average American home. It is ideal in size, perfect in proportion—and the price is astonishingly low. All materials are of our Certified high qualities. Always remember that Aladdin guarantees that you will have sufficient material to complete your house as stated in our specifications. And this guarantee also covers safe arrival of all material in perfect condition. A noteworthy feature of the Hawthorne home is that every bedroom in all five plans is provided with a closet. The 22' x 8' porch shown in the illustration is priced separately to permit you omitting it or selecting some one of our other porches, if you prefer. If desired, the porch columns can be furnished to extend down to the porch floor, making the cement block piers unnecessary.



PLAN A

Aladdin furnishes highest quality materials, performs about one-third of the construction labor for you by machinery at the factory, quotes one low price on the entire bill of material and ships everything in one car, freight paid to your station. Satisfaction or your money back is guaranteed.

Save Waste—Save Time—Save Money



PLAN C



PLAN D



PLAN F



PLAN G

Sarasota, Fla.

Dear Sir:

My new Hamilton is nearing completion and is the talk of the town. It has proved to be a mild sensation. I am making a show place of it and thousands of tourists will see it this winter. I expect to be a steady customer of yours. You will doubtless do a sizeable business, for everyone is interested in the Aladdin way of breaking down the price fixing of the lumber associations that are throttling the building industry in Sarasota and its environs.

Fred W. Lytton.



THE HAMILTON—A Tremendously Popular Design—

Price Given
On Enclosed
Price List

And We Pay
The Freight

Many Aladdin houses have been built of brick veneer. We, of course, will quote on any design in the book, omitting siding and casings and furnishing special window and door jams. The Hamilton illustrates the attractions of the type. While the vestibule entrance shown above is of stone, it can be constructed of brick or, as is sometimes done, in wide siding. The Hamilton is a beautifully proportioned structure and will match the finest homes in any neighborhood. We will, of course, furnish this design with siding if preferred. Every modern thought is expressed in the arrangement of the interior. Note the large vestibule with cloak closet, arched opening leading from living room. Kitchen design is planned for step saving. Two splendid bedrooms are found on second floor with linen closet and bath.

We are proud to present this new Aladdin home, confident that it will give the highest satisfaction to every owner. We would like to give you more information about it if you will write us.

Sills are built up size 6" x 8", joists are 2" x 10", rafters are 2" x 6" and ceiling height 8'6" first floor and 8' second floor. Complete detail specifications will be mailed on request.



FIRST FLOOR PLAN No. 1



SECOND FLOOR PLAN No. 1



FIRST FLOOR PLAN No. 2



SECOND FLOOR PLAN No. 2



THE OAKWOOD—Sure to Please—

Price Given
On Enclosed
Price List

And We Pay
The Freight

Here is as pretty a home as you will find anywhere—modern in design and attractive in appearance. There are four plans of the Oakwood, all different in size and arrangement. In plan A of the Oakwood, the bath room would provide a roomy pantry, opening off from the kitchen, if the bath room is not desired. In plan B, the middle bedroom could be reduced in size and used for a bath room if desired. In this way the other two bedrooms could be increased in size. In Plan C the bath room can also be converted into a pantry if this change is wanted. Write us for further information concerning these or similar changes in plan arrangements. Since the Oakwood home is designed in pure Colonial architecture, the eave construction conforms to that style. The eaves of the Oakwood home are boxed and return straight to the walls of the house, adding much to the attractiveness of the exterior. With the Oakwood home you receive 6" x 6" built-up girders. The Oakwood plan A, B and C are provided with 2" x 6" floor joists on 16-inch centers. Plan K is provided with 2" x 8" floor joists on 16-inch centers.

Ceiling height 8 feet. The roof has a one-quarter pitch. Complete detail specifications mailed on request.

Webster, Mass.

Dear Sirs:

I want you to know that my Oakwood home is one of the finest homes around here and if anyone wishes to see it, I will gladly show it. We have it nearly finished now and my husband and I did all the work ourselves with one man to help nail. We did not have to hire anyone with experience, your blueprints are so clear anyone could read them.

Mrs. Adam Skrent.

**Cash Selling Cuts the Cost—Every
Dollar Brings 100 Cents Value.**



A very popular and widely copied plan designed by Aladdin. It is complete in accommodation including a well placed bath room.

Plan "B" will go on narrow lot and offers a fine arrangement for a family of six—three bedrooms, living-room, dining room and kitchen.

A thoroughly proven plan offering everything demanded for a home of five rooms and bath. It is impossible to secure greater utilization than is here represented.

A special feature of the Oakwood Plan "K" is the inclusion of a cellar stairs. If not wanted the space can be converted into a pantry.



THE CEDARWOOD—A Real Beauty—

Price Given
On Enclosed
Price List

And We Pay
The Freight

This home has enjoyed a continuous popularity for nearly thirty years. It is perfect in proportion and a type that will never be out of fashion. There are four plans to choose from. Plan C contains a living room, kitchen, and three bedrooms. If a dining room is desired the rear bedroom can be made into a kitchen and the outside door changed at no additional cost. Another change sometimes made in Plan C is to make a bathroom out of the middle bedroom which

slightly enlarges the front and rear bedrooms. The prices quoted are for either siding or wood shingles on the outside walls. It is necessary that you specify on your order whether siding or shingles are desired. The porch is 16' wide and 8' deep. If you do not wish to build the brick piers shown in the photograph, we can furnish full length columns to extend down to the porch floor. The porch is priced separately so you can order this porch or some other porch shown in the catalog or leave it off entirely if you so desire. The Cedarwood is furnished with 6" x 8" built-up girders, 2" x 8" floor joists on 16" centers and 2" x 4" rafters. Ceiling height 8'. The roof has a one-quarter pitch. Complete detail specifications mailed on request.

Boylston, Mass.

Gentlemen:

I will be glad to give any information regarding my experience with your Aladdin houses. I found your material for my house and everything about it just as you represented it to be—everything matched perfectly and my house is very warm and cozy in winter. Almost anyone can afford one of these homes if they try.

Mrs. Minnie Place.



PLAN A



PLAN C



PLAN D



PLAN E



THE EDGEWOOD—New England Influence—

Price Given
On Enclosed
Price List

And We Pay
The Freight



FIRST FLOOR—THE EDGEWOOD



SECOND FLOOR—THE EDGEWOOD

The best American traditions in home architecture are perfectly represented in the creation of the Edgewood. In floor plan and detail, it follows the conservative ideas of early New England settlers, whose homes, built one hundred and two hundred years ago, dot the hills and highways of the far eastern states. Embellishment of this type was limited largely to the entrance, whose detail was taken from the Doric or Ionic Architecture of the Greeks. The Edgewood is true to type. The interior arrangement presents space convenience and arrangement on a really grand scale for a home of this size. Leading from the entrance hall to the right, one enters a living room with a depth of 24 feet and exposure and light on three sides. To the left of the entrance opens up a well proportioned dining room with cloak closet, light airy kitchen and convenient dining nook. On the second floor are arranged four attractive bedrooms, each with double exposure, convenient closets and centrally arranged bathroom. It would be quite impossible to secure more living convenience for your investment, for not one inch of space in the entire home is wasted. We would like to discuss this home more in detail with you. Write us about it. Complete detail specifications mailed on request.

Liverpool, N. Y.

Dear Sirs:

You would be surprised to see how many cars stop on my highway and watch my Capitol go up. I am very proud to be the owner of two of your homes. The Birchwood could be rented a dozen times, but I will not rent it until I get in my Capitol. I am more than pleased,

Harry B. Love.



THE PILGRIM—Last Word in Design—

Price Given
On Enclosed
Price List

And We Pay
The Freight

A skillful blending of Colonial and Modern details is immediately evident in the picture of the Pilgrim shown above. The main structure is in graceful proportions, yet the usual severity of the conventional Cape Cod is softened by the unusual treatment of the entrance and the addition of an exceptionally large window in the living room. Our designers have matched the beauty of the exterior with two unusually desirable interior plans.

Plan No. 1 presents a large living room which is entered from the front vestibule, and gives access to a hall at rear,

to side entrance hall—grade cellar entrance, and to the dinette. Stairway to attic can be furnished from closet in right rear bedroom.

Plan No. 2 features three bedrooms with space for breakfast room set in kitchen. Stairway to second floor can also be furnished upon request. Our list prices do not include this stairway, windows or floor for second floor. These plans are of course designed to meet all F. H. A. construction requirements. Write for detail specifications.





THE NORFOLK — Two Interesting Plans —

Price Given
On Enclosed
Price List

And We Pay
The Freight

Highly popular in its appeal to present day home builders is the type represented by the Norfolk. And there is good reason behind this popularity. Its simplicity of design, the absence of unnecessary embellishment or furbelows, insure that no money is wasted. Every dollar expended for material and labor achieves the maximum of home comfort, convenience and utility.

Two plans are shown below to meet your particular choice of a basement, or a utility room. In both plans access to the attic is provided by an enclosed stairway. It is of course possible to finish off the attic for use as either storage or added sleeping quarters. Complete detail specifications mailed on request.



PLAN No. 1



PLAN No. 2



THE WELLINGTON—English Colonial Beauty—

Price Given
On Enclosed
Price List

And We Pay
The Freight

The Wellington is a very fine example of English Colonial Architecture. Not just another house, but a home of distinction that will do credit to any community. The exterior is a delight to the eye and the interior is ideally arranged. It can be used as a 3 or 4 bedroom home as the room marked "library" on the floor plan would make a perfect first floor bedroom, as lavatory is located next to it and door from dining room can be omitted. Another option is the Breakfast Room. This can be used as a pantry or entrance can be changed to living room and it can then be used as a study room.

The living room with its grouping of casement windows, both front and rear, actually make it a sun room and at the same time leaves wall space for the proper placing of living room furniture. If on account of location of your lot exit door to driveway should be on other side, it can be

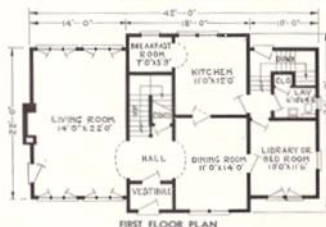
accomplished by reversing the entire floor plan. This will place the living room on the right hand side of the house. If you wish this change, please mention when ordering.

One of the very desirable features of the Wellington is the large amount of closet room. A commodious coat closet under main stairs, closet off the lavatory, four unusually large clothes closets and linen closet on second floor.

It is truly a home of beauty, comfort and convenience. A home of architectural balance with its dignified front entrance and massive roof that is good today and will be in good keeping fifty years from now.

The structural details of the Wellington are a guarantee of a permanent home. The sills are 6" x 8". Joists for first and second floors 2" x 10" on 16" centers. Height ceilings first floor 9 feet. Second floor 8 feet.

Good Materials Plus Good Construction and Correct Architecture Makes ALADDIN HOMES the Outstanding HOME VALUE of All Times





THE PLYMOUTH—A Perfect Home—

Price Given
On Enclosed
Price List

And We Pay
the Freight

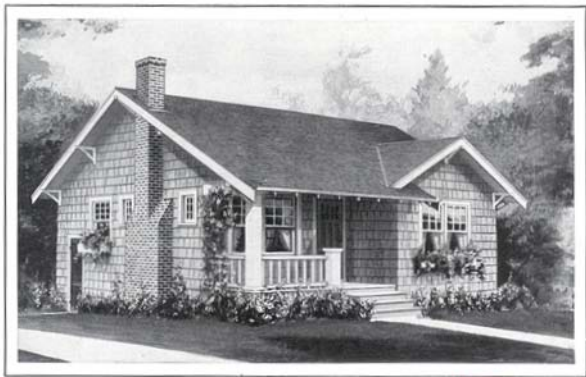


The Plymouth is often referred to as a "perfect" home because it is average in size, pleasing in appearance and convenient and complete in arrangement. While the impression is that of a story-and-a-half house the second floor rooms are square with full height side walls. Two plans of the Plymouth are shown. In both plans, closet space is ample. This is particularly true in the Number 2 plan which provides for two closets off from the large, front bedroom, a closet off from each of the other bedrooms, a linen closet off from the hall and another large closet off from the hall large enough for trunks or storage. In both plans, a French door leads to the porch at the side. The porch is priced separately and can be included with your home if desired.



Ceiling height 9 feet first floor and 8 feet second floor. The main roof has a one-quarter pitch and green, slate-surfaced asphalt strip shingles are furnished for the roof covering. Complete detail specifications furnished on request.





THE MARSHFIELD—A Snug, Distinctive Home—

Price Given
On Enclosed
Price List

And We Pay
The Freight

The Marshfield is a snug little home and the careful handling of fine details makes it a home of unusual distinction. It is compact, making it a home easy to heat and take care of. The front porch is included in the price. A fine location for a fireplace is suggested by the plans and illustration. However, we do not cut the openings for fireplaces and therefore they need not be built unless wanted. If you do not intend building the fireplace chimney, the two small windows in the end of the living room can be omitted and one full size window furnished in their place at no difference in price. The Marshfield is priced with siding or shingles on the outside walls. If you desire to shingle the outside walls as suggested in the illustration, specify them and we will furnish them for you at no additional cost. The Marshfield can be purchased in two sizes. Plan A has a conveniently located dinette, or dining alcove, off from the kitchen. A great number of small homes today are being built without a dining room and there are many good reasons for not including them. If no dining room is arranged it means a smaller home to build, to heat, to clean and maintain. It saves the cost of expensive dining room furniture. Still, many people prefer a dining room and therefore Plan B of the Marshfield is also offered. Plan B is practically the same as Plan A with the exception that a dining room is provided in place of the dinette.

The modern trend in home building has definitely turned to
Small, Convenient Houses.

Lower Investment Costs - - - Lower Maintenance Costs
and Easier Housekeeping all favor small homes.



MARSHFIELD—PLAN A

Auburn, N. Y.

Gentlemen:
We have been living in our home since October and are very much pleased with it. It is just what we have always wanted and we cannot praise it highly enough. We wish to thank you for quick shipment and service too. Had plenty of material to work with and some left over.

We have had many people ask to inspect our home and all were very much interested. We find that we saved exactly \$1400 in building this home in place of one from a local lumber dealer. The oil flooring was of a superior quality. Everyone remarked about its thickness. You may refer prospective customers to us.

Mr. and Mrs. James E. Jones



MARSHFIELD—PLAN B



THE NEWPORT—Original in Design—

Price Given
On Enclosed
Price List

And We Pay
The Freight

This quaint design is as original a home as was ever designed! The Newport stands out in a manner that commands instant attention from the seeker of a home combining convenience and practicability with individuality of design. These features are admirably and abundantly supplied in the Newport. Two plans of the Newport are presented. While both plans include a living room, dining room, two bedrooms and a bath, it is interesting to study the differences between the two plans. Plan No. 1 is a little simpler in design and a trifle smaller in size. Plan No. 2 contains all the features of the No. 1 Plan and in addition is provided with a convenient coat closet off from the dining room, a handy place for a refrigerator at the head of the cellar stairs off from the kitchen, larger bedrooms and a larger kitchen. Both plans present the same outward appearance viewed from the front or left side. However, the No. 2 Plan is provided with a similar projection on the right side to the dining room projection on the left side of both plans. This perhaps would make the No. 2 Plan the more attractive house from the exterior when viewed from the right. Both plans, including eave projection, have a total width of twenty-nine feet and therefore, either plan could be satisfactorily built on a lot 50 feet or more in width. If the fireplace is not to be built, we can omit the two small windows on each side of the fireplace chimney and furnish one full-size window in substitution at no difference in price. Also remember that if the location of your lot or your view is such that you would prefer the living room, dining room and kitchen on the right side of your home, rather than on the left side as shown, the house can be furnished in reverse plan arrangement at no additional cost. If this change is desired you have only to mention it when placing your order. The front porch shown on the plans of both homes is included in the price. The porch is furnished without the floor with the intention that you will secure material locally and build the floor of cement, brick or tile.

The roof has a one-third pitch and is furnished with green, slate surfaced asphalt strip shingles. Porch, as explained above, is included in price as are also the ornamental shutters for the front windows. Complete detail specifications mailed on request.

The roof has a one-third pitch and is furnished with green, slate surfaced asphalt strip shingles. Porch, as explained above, is included in price as are also the ornamental shutters for the front windows. Complete detail specifications mailed on request.

Robin, Idaho.

Gentlemen:

I will be very glad to show my Aladdin home to any prospective buyer you may send to see it. I am very happy with my Aladdin home and like it more each day. I feel anyone will be very pleased to have an Aladdin and they can save a lot, besides receiving better material than from local dealers. I am also pleased with the treatment received from the Aladdin Co.

Mrs. Fred Bishard.



NEWPORT PLAN No. 1



NEWPORT PLAN No. 2



THE DOVER—A New Aladdin Creation—

Price Given
On Enclosed
Price List

And We Pay
The Freight

Recent vogue in modest homes is splendidly represented by the creation of this delightfully interesting Dover. The handling of the entrance gable is in excellent proportion to the main structure, and to attain the real beauty shown in our picture, it is suggested that the lawn be terraced to a level with the entrance. Note the special grouping of windows. This feature adds much to the Dover's light, air and comfort. The specially designed circle top front door is embellished with heavy hammered iron strap hinges.

Two plans are shown below, one 24 feet wide and one 28 feet wide. The first provides an exceptionally large living room 24 feet by 12 feet, an excellent dining room, two bedrooms, bath, conveniently located kitchen and grade cellar entrance. The larger plan offers three bedrooms and the same additional accommodations as the smaller. In selecting the plan to meet your needs, you will be happy in your choice of the Dover for your home. Complete detail specifications mailed on request.

Aladdin Houses Are Sold by the Golden Rule

For thirty-one years The Golden Rule has governed the business policies of the men responsible for The Aladdin Company and its products. During all this time there has never been a Court Action started by any customer against the company. Our broad guaranty of "Satisfaction or Your Money Back" insures a happy relationship between the company and all customers.

Gouverneur, N. Y.

Gentlemen:

I am sending the name of a prospect. Would you please send him a catalog? I am hoping you will sell him a home as I like mine better all the time. If I ever build again I will certainly buy thru your company as you used me fine in every way.

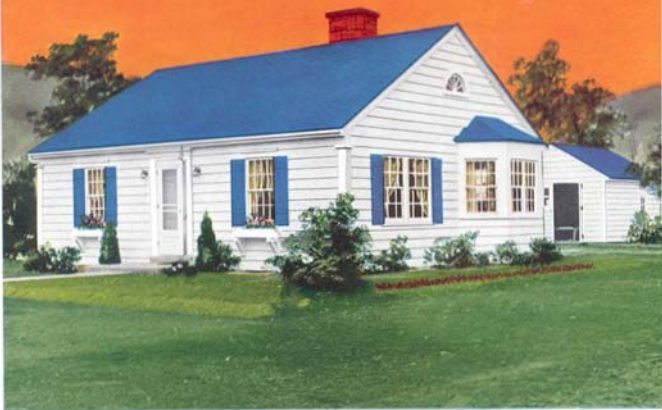
John A. Mills



THE DOVER PLAN A



THE DOVER PLAN B



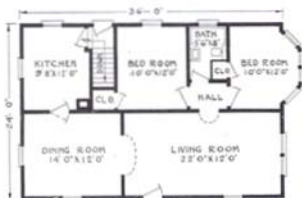
THE ROCKPORT — Cozy Design —

Price Given
On Enclosed
Price List

And We Pay
The Freight

A touch of originality is given this wholesome design by the creation of a bay window at the right, whose projecting cottage type windows harmonize splendidly with the architectural plan. Note the good looking Colonial doorway, Trimmed shutters add balance to the windows and contrast to the color scheme. Another noteworthy feature is found in the pilasters at each corner of the house. The Rockport is shown in two sizes below, each with special features to recommend it. Large living rooms are a desirable part of both plans, each has attractive dining rooms with bedrooms and baths efficiently designed. A study of Aladdin specifications will reward you with the knowledge that nowhere can be found quality to exceed that which is a part of Aladdin houses. Finer materials cannot be had for we have used the greatest care to seek out and use the very best. Send for details and give us an opportunity to prove beyond doubt the facts covering the above. Complete detail specifications mailed on request.

If the materials you receive with your home
are not all that we claim them to be in quality and quantity,
the Aladdin Company stands ready to return your money.



PLAN No. 1



PLAN No. 2



THE BEDFORD — Dignified Beauty —

Price Given
On Enclosed
Price List

And We Pay
The Freight

Embellishments of a dignified character are evident in the Bedford, yet it holds true to the Colonial inspiration. The pilastered entrance is strictly true to type, and variety is given to the facade by incorporating perpendicular batted siding. Note the overhang of the upper story. This adds an extra foot to the rooms above. A study of the floor plan of the No. 1 design discloses what approaches perfection in a home of this size. Cross ventilation and excess lighting feature every room. Seven closets are evident.



PLAN No. 1

Plan No. 2 follows the design of the above photograph, with, of course, window changes as shown on the floor plans. Two alternate first floor plans are shown—one with utility room and no basement, the other with a dining room planned where a basement is desired. Our price is the same for either plan. Write for detail specifications.



PLAN No. 2

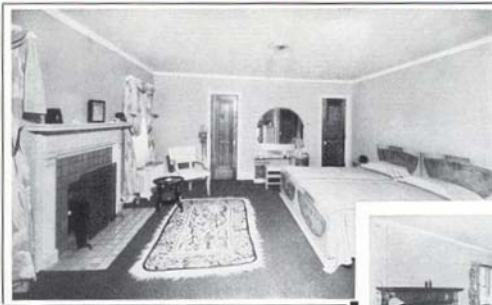


ALTERNATE FIRST FLOOR



SECOND FLOOR PLAN No. 2

An Ultra Modern Aladdin Bed Room



The Bed Room

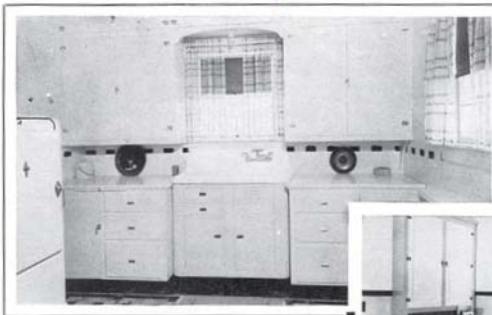
Proper ventilation and wall spacing are features that stand out by themselves in Aladdin bed rooms. Thoughtful planning in the selection of furniture and curtains and care in the arrangement of furniture makes possible such beautiful results as shown in this picture of an Aladdin bed room.

The picture at the left illustrates an ultra-modern treatment in the furnishing of our

bedrooms on the second floor were thrown into one large Masters Bedroom, with individual closets at the rear. Such changes in our regular plans can always be made at slight cost.



Conveniently Planned Kitchens



The Kitchen

From the housewife's standpoint the kitchen is the most important room in the modern home. By correct arrangement and planning the burden of kitchen work is greatly reduced in Aladdin kitchens. In all plans, excellent light and ventilation are provided.

At the left is shown a 10 x 12 ft. kitchen in one of our medium sized homes. It is light, airy, convenient and adequate for all purposes. At the bottom is shown a breakfast room addition. We will be glad to quote prices on such additions.



Beauty, Comfort and Convenience By Aladdin



THE GABLES—Quaint and Original—

Price Given
On Enclosed
Price List

And We Pay
The Freight

Unusual features distinguish this new and original home. A charming hood graces the front entrance. It is supported by well proportioned brackets and offers ample protection to the terraced steps. Roof lines, both gable and hip, are distinctive. The rear service porch is an attractive feature. Two sizes are offered to you, if you are attracted by the Gables. In both, the living room is large and given greater spaciousness by the alcove type dinette. Note that the kitchen has light and exposure on three sides. Cellar entrance is provided directly from the kitchen. Two bedrooms with ample closets, hall and bath offer every convenience and comfort. The built-in goodness, genuine quality of all materials and the beauty of this home will be a great satisfaction to every owner. Remember Aladdin's guarantee of satisfaction or your money back is your protection in building the Aladdin way. "Sold by the Golden Rule" has been tested by thousands of home builders to their lifetime gratification.



PLAN No. 1

Shipment of
any Aladdin
Home can be
made a few
days after re-
ceipt of order.



PLAN No. 2



THE VASSAR—Model Story and One-Half—

Price Given
On Enclosed
Price List

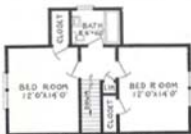
And We Pay
The Freight

The honor of being selected for picturing on the cover of this year's catalog was given to this master design—the Vassar. This is because it is so typical of 1937 demand in the modest American home. The Vassar possesses originality, character and beauty while also combining simplicity, now so much demanded in home architecture. The vestibule

entrance is surmounted by a half pitch gable roof, the front of which is embellished with artistic moldings while pilasters form the frame for the front door. This entrance gable harmonizes with the larger gable which is a harmonious background for the fireplace chimney. Mullion windows are well proportioned to exterior wall spaces. Two thoroughly modern arrangements are shown in the floor plans below. Both offer facilities for three bedrooms, while in each case the bedroom on the first floor can be adapted to use as a sitting room or library. Opportunities for later expansion by the addition of a rear room to the first floor are offered in this plan. The Vassar is finding a host of friends and will appear favorably in any neighborhood. Write us for further information. Complete detail specifications mailed on request.



1st FLOOR PLAN No. 1



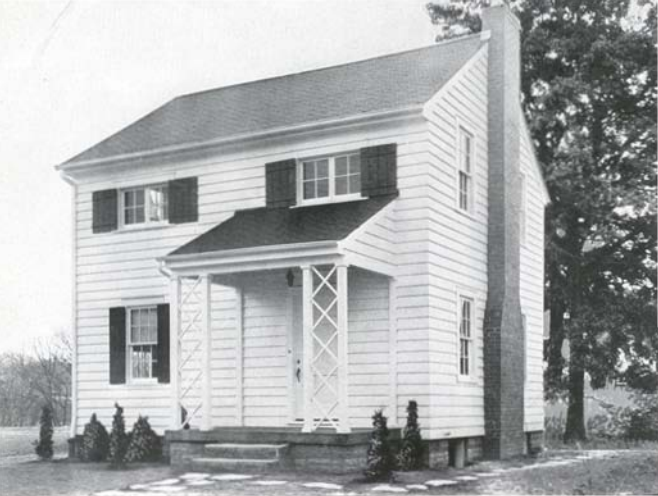
2nd FLOOR PLAN No. 1



1st FLOOR PLAN No. 2



2nd FLOOR PLAN No. 2



THE BEACON — New England Design —

Price Given
On Enclosed
Price List

And We Pay
The Freight

Good taste is expressed in the design of this perfect example of New England architecture. It would be difficult to incorporate more living accommodations and convenience in a home of this size and cost. Good proportions are evident in every part, both outside and throughout its interior. A spacious living room, airy and light, would do justice to a much larger home. Should

a third bedroom be more desirable than the dining room, a door can be furnished in place of the arch between living room and dining room, and the latter be utilized as another bedroom. We will send you, on request, a plan of our suggestions for this change. Direct entrance from kitchen to living room through an added door is a part of this change. Write us for complete detail specifications.



FIRST FLOOR



SECOND FLOOR

FINANCING YOUR ALADDIN HOME

If you wish help to finance your Aladdin Home, please refer to page 7 of this Catalog.



THE MAPLEHAVEN—A Master Design—

Price Given
On Enclosed
Price List

And We Pay
The Freight

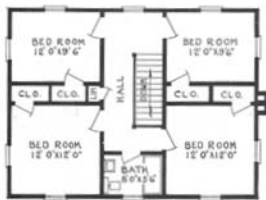
The grandeur of a white home with the sun's sharply etched shadows is beautifully pictured in the above photograph of the Maplehaven. The Maplehaven shown above is built in a beautiful residential section of Charleston, West Virginia, where it is admired by all observers. Grouped columns supporting the arched front entrance are perfectly proportioned. Paneled and glazed side lights embellish a most attractive front door design. Colonial, divided light windows are an added feature. Simplicity is the guiding motif of the whole plan. On entering this home, a generous sized hall is discovered, with semi-open stairway and large cloak closet at rear. At the right of the hall, a curved arch opens into spacious living room with three exposures. Dining room, kitchen and dinette complete the first floor facilities. Four light, airy bedrooms are afforded on the second floor, each with good closet and a conveniently located bathroom complete the arrangement. Complete detail specifications mailed on request.

Lawrence, Mass.

Gentlemen:

We are continuing to enjoy your Aladdin home very much. It is particularly attractive in its garden setting and has won much favorable comment in the press and otherwise. It has withstood two very severe winters and I can truthfully say that your houses are all that you advertise them to be.

Margaret Lind



Aladdin's
Readi-Cut
System
Saves
18% of
Usual
Lumber
Waste

SECOND FLOOR PLAN



THE HAMPSHIRE — True Cape Cod —

Price Given
On Enclosed
Price List

And We Pay
The Freight

Here is an outstanding example of pure Cape Cod. Its present popularity is a tribute to the skill and artistry of those designers of many generations ago. They produced a type that is as sound today, and will be through all the future, as it was in their time—because it is *good architecture*. And it is true to American tradition. It achieves simplicity and

directness of purpose, and utilizes all materials toward maximum home efficiency and comfort.

Both floor plans of the Hampshire will merit the closest study. The larger plan—shown in the above photograph—of course requires a suitable lot, unless a corner lot is available, when it can be built on a 50 x 100 ft. site. A fourth bedroom, over the garage, can be supplied if desired. The kitchen is designed to accommodate a breakfast room set.

The smaller plan is four feet less in width than the main structure shown in the photo above and with the garage addition removed. It would of course be possible to add such an addition at a later date. A striking advantage of the Hampshire is that from any view—front, side or rear, the proportions and detail are all good to look at—attractive. Complete detail specifications will be sent you on request.



1st FLOOR PLAN No. 1



2nd FLOOR PLAN No. 1



1st FLOOR PLAN No. 2



2nd FLOOR PLAN No. 2



THE AMHURST—Ultra-Modern Brick—

Price Given
on Enclosed
Price List

And We Pay
The Freight

We present here a sturdy conservative American type of home that is finding great popularity at the present. In form and detail, it will always remain attractive, substantial and wholesomely livable. The three gables facing the front are excellently proportioned, decorative and of real utility. Note the front entrance, approached by a convenient terrace, while the door is bordered with cut stone and slightly recessed. The interior of the Amhurst offers a world of attractions to the careful student of plan arrangement. Eight rooms and bath afford every luxury and necessity to be found in the very finest homes. From the cloak closet in the vestibule through the living room to the dining facilities, including dining room, kitchen and breakfast room, the arrangement is most studiously conceived for convenience. From the hall at rear, entrance is to be had to downstairs bedroom, lavatory and stairway. The second floor is arranged with owner's suite, including a most desirable sitting room and double closets. The third bedroom also has two generous sized closets and linen closet and bath are of convenient access. The Amhurst will lend charm and dignity in company with the largest homes and will be a never-ending source of pleasure and pride to its owner.



AMHURST—FIRST FLOOR PLAN



AMHURST—
SECOND FLOOR PLAN

Aladdin Brick Veneer

Any Aladdin house shown in brick veneer can also be had with exterior walls of siding if preferred. Write us on this subject if you desire brick veneer or siding for any design.

Sterling, Illinois

Dear Sirs:

I would be just too glad to grant you permission to send any prospective customers to me or write me regarding our Aladdin home which we are enjoying so much at present. It is almost finished and I have done all the work myself.

Harold L. Heller.

Real Aladdin Living Room Comfort



The Living Room

Aladdin interiors are planned by experts who appreciate the priceless value of a happy, contented home life. The living room is the very center of the home—a gathering place where idle hours become golden hours of rest and relaxation. You, too, will enjoy the comforts and luxury of an Aladdin living room.

Large Cheerful Dining Rooms



The Dining Room

Simplicity and good taste are outstanding features of Aladdin dining rooms. Correct proportions and correct wall spacing with the proper arrangement of doors and windows set a definite standard equaled only in the more expensive homes.

Expert Planning Makes Convenient Interiors



THE CONCORD—One of Aladdin's Newest—

Price Given
On Enclosed
Price List

And We Pay
The Freight

Distinction is given this charming design by an entrance at once original and appealing. Pillars grace the gabled vestibule while an arched ceiling adds a new touch to the design. Narrow side lights on each side of the front door afford light to the vestibule. The main structure of the Concord is beautifully proportioned. Besides a splendidly spacious living room, the first floor contains a suite including bedroom, lavatory, linen closet, and clothes closet. These are entered from the separate hall from which the stairway also leads to the second floor. Grade cellar entrance occupies the space under the main stairway. All four downstairs rooms have double exposure for light and air. The fireplace may be built in as shown or omitted if desired. On the second floor is found two well planned bedrooms, bathroom and four closets. Always keep in mind the high quality of materials built into all Aladdin Houses and that this quality can be had at such great economies only from The Aladdin Company. The Read-cut System backed by volume production is the reason. Our Golden Rule Service and money back guarantee are your protection. Complete detail specifications mailed on request.

Shipment of
any Aladdin
Home can be
made a few
days after re-
ceipt of order.



FIRST FLOOR PLAN



SECOND FLOOR PLAN



THE STRATFORD — Enduring Beauty —

Price Given
On Enclosed
Price List

And We Pay
The Freight

Modern architecture combined with skillful interior design distinguishes the Stratford—an immensely popular Aladdin home offered in two different sizes and plan arrangements. The Stratford is substantial—a lifetime home. Many distinctive touches lift the Stratford out of the ordinary. The snubbed gables—the shutters on the front windows—the gable roofed projection at the front providing for the entry and coat closet—the massive, circle top front door with heavy, ornamental hinges and Colonial style cylinder lock set—these are only a few of the many features that will appeal to you in this home. It is a home that will attract attention and cause favorable comment in any locality. At the prices quoted, siding or Cedar shingles as shown in the illustration can be furnished for the outside walls at no difference in price. The iron railing on the front terrace is included. Curved, plastered arches are suggested for the openings between the living rooms, dining rooms and entries and for the opening between the living room and hall of both plans,

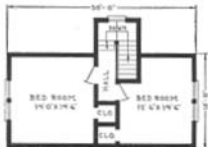
but square, cased arches can be furnished if desired at no difference in price. With the Stratford home you receive 6" x 8" built-up center girders, 2" x 10" first and 2" x 8" second floor joists on 16-inch centers and 2" x 6" rafters on 16-inch centers. Ceiling height 8'6" first floor, 8' second floor sloping to a minimum of 6' at front and rear. The roof has one-half pitch. Asphalt strip shingles are furnished for the roof covering. Complete detail specifications mailed on request.



STRATFORD No. 1—1st FLOOR PLAN



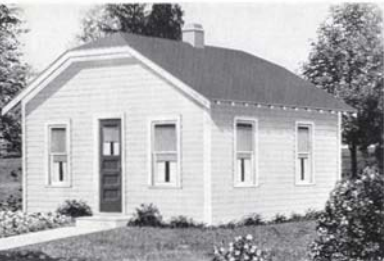
STRATFORD No. 2—1st FLOOR PLAN



STRATFORD No. 1—2nd FLOOR PLAN



STRATFORD No. 2—2nd FLOOR PLAN



Build
It Yourself

THE CONVERTIBLE

Price Given
On Enclosed
Price List

And We Pay
The Freight

There is a strong appeal in this pretty hip roof cottage. Three convenient plan arrangements offer a fine selection. The Whitehall is 24' wide and 20' deep. Ornamental shutters are furnished for the front windows as shown in the picture. If a cellar stair is desired, write for separate quotation on the cellar stair addition.

Thornton, Idaho

Gentlemen:

I have had a good many inquiries and visitors to our home, The Whitehall. We are more than satisfied with it in every way. I'll be glad to do all I can to boost the Aladdin homes to future homebuilders.

(Signed)

Myron B. Jeppson

The Convertible is a stepping stone to Homelands. It is a house designed for living quarters until a larger one is built, when it can easily be converted into a two-car garage. This is being done by thousands of people who own their own lot, either all paid for or partly paid for. The Convertible home gives one the opportunity to own a home with a minimum investment and then provides the opportunity for them to save for a larger home. Two sizes of the Convertible home are shown.



Either floor plan can be furnished in the 18' x 18' size or the 20' x 20' size.

Metcalfe, Ill.
Dear Sirs:

We are well pleased with our new home and will be glad to allow you the privilege of sending customers to us to see our Elmwood. We will be glad to show it to them.
Mrs. Elizabeth DeAtley.

THE WHITEHALL— A Splendid Model

Price Given
On Enclosed
Price List

And We Pay
The Freight

In this catalog you will find the **GREATEST HOME VALUES** ever offered in one book, **Big Production Methods and Direct Selling the Reason**





THE BROCKTON — Inexpensive — Charming —

Price Given
On Enclosed
Price List

And We Pay
The Freight

The Brockton is one of the most popular small homes of the past year. A careful study of its interior arrangement reveals the last word in comfort, convenience and efficiency. Ample wall space and cross ventilation have been accomplished in every room by our designers. Note that it contains four closets. Two plans are presented, the No. 2 Plan designed for use without a basement by in-

corporating a utility room. The No. 1 Plan shows a cellar stairs where a basement is part of the owner's wishes. A stairway leads from living room to second floor which offers a world of added space. Our price does not include flooring or partitions for the second floor but these things can be added now or later if desired. Write us for detail specifications.



PLAN No. 1



PLAN No. 2

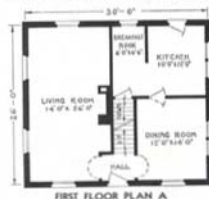


THE MARBLEHEAD—A Modified Cape Cod—

Price Given
On Enclosed
Price List

And We Pay
The Freight

The Marblehead presents a picture of dignity and simplicity in a popular type of brick veneer. Its dormered roof is perfectly proportioned and in keeping with the New England motif. It is planned to accomplish extreme economy in the use of decoration and yet it achieves true beauty. Two floor plans are illustrated below, one with two bedrooms and one with three bedrooms. Plan A has a ground width of 30 feet and a grand living room 26 feet deep with three exposures. Plan B is 36 feet wide

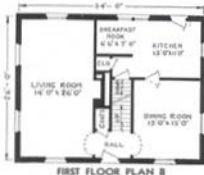


This plan incorporates three bedrooms on the second floor with unusually ample closets. Both plans have desirable breakfast nooks. The Marblehead will fit into any neighborhood to the complete satisfaction and pride of its owner. Complete detail specifications mailed on request.

Gentlemen:

I shall be glad to have you use my name as a reference for Aladdin homes. I have had a good many inquiries and visits to our home, the Whitehall C. We are more than satisfied with it in every way. I'll be glad to do all I can to boost the Aladdin homes to future home builders.

Myron B. Jeppson,
Thornton, Idaho.



Many questions regarding Aladdin homes will be found answered on pages 2, 3, 4, 5, 6, 7 and 8



THE VIRGINIA—Different-Interesting-Well Balanced— Price Given On Enclosed Price List And We Pay The Freight

The Virginia attracts instant attention because it is different, interesting and well balanced. The simplicity and economy of Colonial architecture are the keynotes of the Virginia. The house presents a cozy appearance that tells you it is more than a place to live—it is a Home. Both plans are alike in general arrangement but one contains three bedrooms and the other two bedrooms, allowing you to make your selection according to your requirements. In both plans of the Virginia the living room extends out at the side, thus giving a sun parlor effect to the home. The portion of the living room that extends out at the side is separated from the balance of the living room by a circling arch at the ceiling line. This arch does not extend down to the floor and thus it is possible to furnish the entire room as one, or to furnish the projecting portion as a sun room, if desired. You will notice

that the projecting portion of the living room is lighted by windows on three sides, a virtual sun parlor. See the colored interior photograph of the living room of the Virginia at the bottom of Page 8. The bedrooms and bath room are separated from the living quarters. Large, generous clothes closets are provided for each bedroom which add a very valuable feature to the home. Our designers have used every available inch of floor space in these plans which mean economy to the builder. The greatest width of the Virginia home is thirty feet, making it possible to build this home on a lot forty feet or more in width.



VIRGINIA PLAN No. 1

Brighton,
 Rochester, N. Y.

Dear Sirs:

In reference to your letter concerning our Aladdin Virginia home, it was very satisfactory and we would be willing to show anyone our home.

Everyone who has seen it so far has praised the design and workmanship. In building a ready cut Aladdin home, we have saved a considerable sum of money. My brother who built the home was well satisfied with the construction which saved a lot of labor and material.

John Uebelacker, Jr.

Read the dollar
 a knot guaranty
 on page 4.



VIRGINIA PLAN No. 2



THE REDWOOD—A Little Kingdom of Your Own—

Price Given
On Enclosed
Price List

And We Pay
The Freight

The Redwood is one of the prettiest small homes ever designed. It gladdens the hearts of those who are looking for a small, compact house of up-to-date appearance. It is astonishing to find so complete a home in such small compass and with so many conveniences at so low a price. And the quality of the materials that come with the Redwood is identical with that found in the largest and highest priced Aladdin home. There is only one grade in all Aladdin homes—the best. Good materials make a sturdy, lasting home and one that is always easy to sell should you want to do so. The construction used in an Aladdin home is the same as that used in the best Architect-designed, Contractor-built house erected anywhere. We are offering this excellent home at a price only made possible because of our tremendous buying power, our direct to you sales plan and our cash prices. You buy not from a retailer, not from a jobber, not from a wholesaler, but direct from the manufacturer. We make it easy for you to buy right, easy for you to build well and easy for you to own this splendid home. You can build the Redwood yourself for the materials you receive are cut to fit and we furnish drawings and pictures showing where each piece goes. We also furnish a book of instructions telling you just what to do, when to do it and how to do it. Our book of instructions also tells you about many "short cuts" that will save you time when building your home. Even women have told us that they erected their Aladdin Home or assisted in the erection.



REDWOOD No. 1



REDWOOD No. 2

A Letter from Virginia

Gentlemen:

The little house we bought from you last May is completed. Everything went together nicely. The material was much better than we could have bought here and you furnished plenty of everything. We are more than pleased with our little home. If we ever build another will certainly buy from you as we figure we saved around \$200. We thank you for your kindness and fair dealings and will do all we can in the future to boost you.

Mr. and Mrs. J. E. Dickson

(Mail address sent upon request).

Reading, Pa.

Dear Sirs:

I built our Hawthorne home with the aid of my wife, and we enjoyed it. Anyone who can read a blueprint can do this and will appreciate their homes more for having built them. One man from a lumber yard here told me they don't even build stairways to cellar in their Ten to Fourteen Thousand Dollar homes, like you supplied me. My wife, daughter and I sure feel proud of this home of ours.

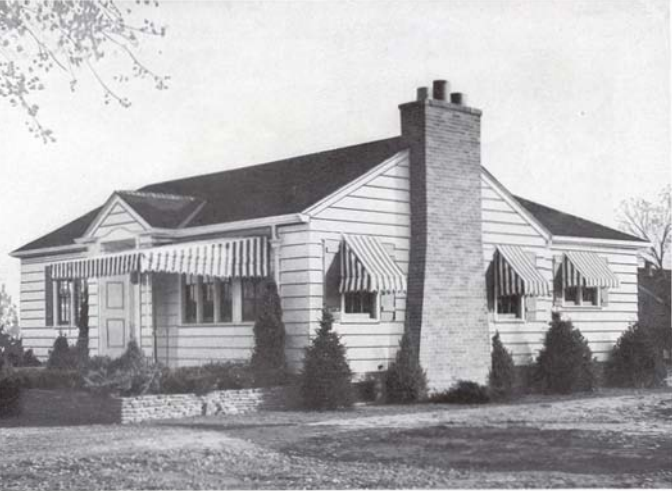
Carl C. Young.



REDWOOD No. 3



REDWOOD No. 5



THE FERNDAL — Modern Simplicity —

Price Given
On Enclosed
Price List

And We Pay
The Freight



An exquisite example of modern simplicity in home architecture is presented in this wholly new creation. It appeals instantly to the most fastidious. Originality of treatment is shown in this recessed and paneled entrance, surmounted by small well proportioned gable. A triple mullion window is observed in the front of the living room, while double mullion matches this in the front bedroom. Wide siding adds a final touch of values. Two sizes are illustrated below, one of two bedrooms and one of three. These plans merit the closest study which will result in highest approval of the skill of the designers. Thoughtful consideration has been given to the comfort and needs of the family. Well proportioned rooms, ample closet room and wall space and step saving placing of communicating rooms testify to the values of the Ferndale. Write us for additional information.



PLAN NO. 1

Indiana, Pa.

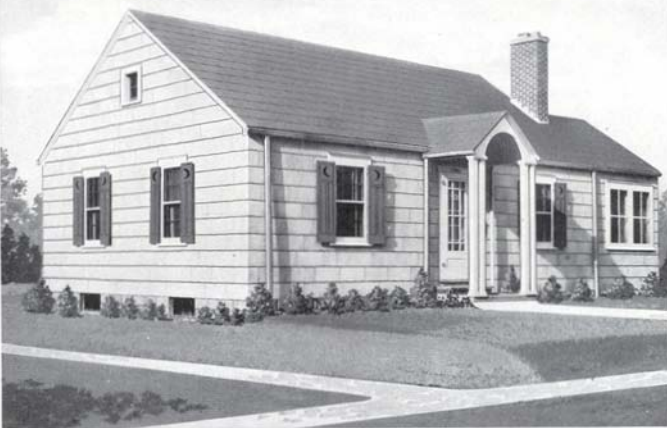
Gentlemen:

I have a mighty good house and very good looking job as I think you will agree on looking at the picture enclosed. I am not only satisfied with the materials furnished, but also with the prompt service and business dealings. I saved \$450 on house proper, quality of materials better than I had hoped for and there was not anything but what fit just tight. If I were to build again it would surely be the Aladdin Way.

Clyde Woodward.



PLAN NO. 2



THE WINSTON—Latest in Exterior—

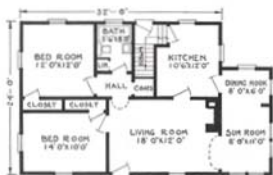
Price Given
On Enclosed
Price List

And We Pay
The Freight

One of the newest developments in plastic building materials is the Cement-Asbestos wall shingle which is pictured above on the side walls of the Winston. These shingles are 24 x 12 inches in size, fireproof and never have to be painted. We can of course furnish them in place of siding for any Aladdin house. Write for information.

The Winston is one of our newest designs and we present it in three attractive sizes. A special feature of this home is the original columned entrance, rising from a masonry terrace. A study of the three floor plans below will show you a choice of size and design that covers a wide range of investment. Plan No. 1 is 24 x 40 feet over all and includes living room 18 x 12 feet, sun room, dining nook, kitchen, grade cellar entrance, two bedrooms, bath and closets. Fireplace may be omitted if desired. Plan No. 2 will accommodate the same sized family but with less rooms. Plan No. 3 will also accommodate a family of four on a modest scale. All materials in all three of these Winston plans are of the same high quality and the sturdy construction is unchanged from that of the largest Aladdin home. Write us about the plan that appeals to you. Complete detail specifications mailed on request.

The Saving After Building a Small Home Will Add More to Your Happiness Than the Luxuries of a Big House



PLAN No. 1



PLAN No. 2



PLAN No. 3



THE BIRCHWOOD — Dream-like Perfection —

Price Given
On Enclosed
Price List

And We Pay
The Freight

The Birchwood is a home of dream-like perfection. It will measure up to your highest expectations, from the strength of its sturdy timbers to the charm and beauty of its woodwork and finish. Shrewd buyers immediately recognize the opportunity to avoid paying the top prices charged by regular dealers—an opportunity made possible by dealing direct with the Aladdin Mills. It is just like buying your materials at a special discount of twenty percent to thirty percent. Comparing the price of this attractive home with the price asked by other concerns, prove the big savings Aladdin gives you. The porch is priced separately. It can be purchased with the home or, if you prefer, it can be omitted. Perhaps

some other porch shown in this catalog would be more satisfactory to you. The wooden columns of the Birchwood porch can be furnished to rest on the porch floor at no difference in price. It would then be unnecessary for you to build the ornamental brick piers.



Winthrop, N. Y.

Dear Sirs:

I am very much pleased with my Birchwood house. The carpenter I had working on my house claimed I saved at least half on the price of labor and everything fitted fine, and the finishing material was better than I expected. I am well satisfied with everything you sent.

W. S. Keegan.

Curtis Bay, Md.

Dear Sirs:

The Aladdin home we built is located about two miles north of Odenton, Md. We are very well pleased with it and will be glad to recommend Aladdin homes to anyone who is thinking of buying or building a home. My husband is not a carpenter, yet he had no difficulty in putting up our readcut home with the aid of the complete plans we received with it.

Mrs. Lyle Fellows.



Buying All Materials From One Company Under a Strong Guarantee of Satisfaction Commands for You the Best Price and Saves Trouble.



THE MARYLAND—A New Modern Type—

Price Given
On Enclosed
Price List

And We Pay
The Freight

Appreciative students of home plans pronounce the Maryland the biggest, low cost home ever designed. To find three bedrooms in addition to living room, dining room, kitchen and bath within the compass of 26x24 ft. is astonishing. Every inch of space in the Maryland is useful. If a larger living room is desired in Plan A, the arch between the living room and dining room can be omitted or moved to the left to form a dinette. Plan B contains large living room with two generous size bedrooms on the second floor. In choosing this or any other Aladdin home, you may do so with assurance that your money will bring you the very highest quality of materials obtainable and that every representation made, is backed by The Aladdin Company's guarantee of complete satisfaction. Complete detail specifications mailed on request.



FIRST FLOOR PLAN A



SECOND FLOOR PLAN A

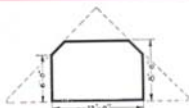


FIRST FLOOR PLAN B



SECOND FLOOR PLAN B

**You Will Start Saving
Money the Day You
Buy An Aladdin Home**



Optional Materials and Equipment

Aladdin Houses—Are priced only in double construction which is double floor and wall construction. If climatic conditions permit you to use a single floor and single outside walls, we will omit the sub-flooring, wall sheathing and building paper regularly furnished with our homes and credit you full allowance for it.

Porches—Whenever possible Aladdin porches are quoted separately to permit buying the house without the porch or to enable you selecting a different porch from that shown on the house. The front steps are included in the price of the porch.

Cellar Windows—For wall opening 3 ft. wide by 2 ft. high, complete with frame, glazed sash and hardware \$2.50 each. It is unnecessary to ship frames before the house, for by leaving openings 3'x2', the frames can be set in the foundation later.



INTERIOR DOOR

Closet Doors—Because it is more convenient to use just a cased arch for closets in smaller bedrooms, we do not include closet doors in the Cypress, Cedarwood, Elmwood, Oakwood, Redwood, Whitehall or Winston Plan No. 3. The cased openings in these homes can be artistically draped eliminating the use of closet doors which will give more space for arranging furniture. If you wish closet doors for any of the above mentioned homes, we will provide them at \$5.95 each including hardware. An illustration of the style of inside doors furnished with Aladdin homes is shown at the left.

Outside Doors—The outside front door furnished with many of our homes is a standard sash door with one light of glass about 24" square in the top. If the Aladdin home you select is provided with this design of door and you wish us to furnish any of the other

styles as shown for other homes in our catalog, write for prices.

Extra Windows—If extra windows are desired, or if you wish us to replace single windows with double windows, write for prices.

Oak Flooring—Oak flooring can be furnished in any or all rooms of any Aladdin home. If wanted, write for prices, and state in what rooms you will wish to use it.

Shingles and Asphalt Roofing—Green slate surfaced asphalt strip shingles or No. 1 Red Cedar wood shingles are furnished with some Aladdin homes. The slate surfaced shingles have a hexagonal butt and are self spacing. When roll roofing is included see separate quotation for shingles instead of roll roofing on price list attached.

Wall Shingles—No. 1 Red Cedar shingles and shingle stain can be furnished for the outside walls in place of siding at no extra cost.

Arches—Square cased openings or materials for curved plastered arches can be furnished in any of our homes where arch openings are shown in the plan.

Screens and Storm Sash—Screens and storm sash can be furnished for all outside door and window openings. Write for prices, mentioning the home selected.

Cellar Stairway Addition—If the Aladdin home you select is not provided with a cellar stair, we can furnish the stair addition as shown at the rear of the Fairfield Plan No. 1 or No. 2. Write for prices.

Kitchen Cabinets—The interior photographs of Aladdin kitchens show many attractive cabinet arrangements which can be furnished for any Aladdin home selected from this book. Write for prices.

It's Easy to Follow ALADDIN Blueprints

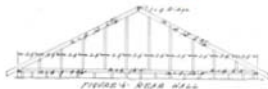


FIGURE 4- REAR HALL



FIGURE 5- REAR HALL



FIGURE 6- RIGHT HALL

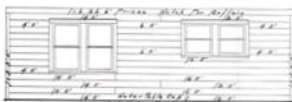


FIGURE 7- RIGHT HALL

Here we have shown in greatly reduced size, a few figures taken from a set of Aladdin Ready-cut House Plans. They show the size, length and position of every piece of material entering into the construction of the home. All materials that need mitering are mitered to the exact length and all you have to do is nail the materials in place.

"HOMEBUILDERS TO THE NATION"



THE KITCHEN

Convenient step saving kitchens are made possible in Aladdin homes by expert designers, who have made a life long study of this work. We will quote on this design of kitchen cabinet, or any other design shown in our catalog, for your Aladdin Home.



THE LIVING ROOM

Large comfortable living rooms exemplify the careful thought given your home by our designers, in locating doors and windows so that your furniture can be attractively arranged.



THE BATHROOM

Aladdin bathrooms are modern in design and planned to give you the best possible arrangement for your fixtures.



FIRST FLOOR PLAN—THE CAPITOL

SECOND FLOOR PLAN—THE CAPITOL

The Capitol is an imposing home. Large sized rooms throughout and four bedrooms with ample closet space make it a wonderful house for a large family. Some of our customers use the library as a breakfast room, opening off from the kitchen. Others have used the same space for a first floor bedroom and still others have used it for a first floor toilet with hallway connecting the living room with the kitchen. On the second floor, the sewing room is often used as a second bathroom, opening off from one of the front bedrooms. If you prefer to have windows with six square divided lights in the upper sash instead of the windows shown in the photograph, write us for prices. The front and side doors are our No. 9 doors shown on page 42. The 14' x 8' porch and the 14' x 10' porte-cochere or covered drive, are both roofed with a tight, weatherproof roof and both are priced separately so they can be purchased with the home or not, as you prefer. Complete detail specifications furnished on request.



THE CAPITOL—

Price Given
On Enclosed
Price List

And We Pay
The Freight

THE BELHAVEN—

Price Given
On Enclosed
Price List

AND WE PAY THE FREIGHT

There is plenty of style in the Belhaven home—style at low cost. It combines a fine exterior with two fine plans. The Belhaven is a home that for convenience and compactness cannot be surpassed. Little things, well planned, add much charm; such as well proportioned hood over front entrance, dormer over front windows, ornamental shutters, divided lights in windows, fifteen light front door. These are all items that add much to the value of your home at very little cost. Plan D is provided with an inside cellar stairway. If you wish to purchase the other Belhaven plan and desire a basement or cellar beneath the home, we suggest that you purchase our Cellar Stairway addition as described on page 50. It provides a practical and convenient means of reaching both the cellar and the kitchen from the outside. The Belhaven home can be built with terraced front lawn as shown or set upon a higher foundation. With the Belhaven home you receive 6' x 8' built-up center girders, 2' x 8' floor joists on 16 inch centers and 2' x 6' rafters. Ceiling height 8 feet. The roof has a one-quarter pitch. The hood over front entrance and ornamental shutters as shown are included in the price quoted for the house. Complete detail specifications are furnished on request.

Selling for Cash Makes These
Low Prices Possible



PLAN A

PLAN D





THE FAIRFIELD Bright and "Homey"

There is a charm about the Fairfield that attracts your instant attention. It is a bright and "homey" plan. The home is so distinctly attractive that it has been necessary for us to design it in two different plans;



FAIRFIELD PLAN No. 1

FAIRFIELD PLAN No. 2

one provides for a 26-foot width home and the other for a 28-foot width home. This is to adapt the house to lots of different frontage. In both of the Fairfield plans our cellar stairway addition is arranged off the rear of the kitchen and is included at the price quoted. This permits entrance direct to the kitchen or to the cellar, from the outside of the house. The porch also is an integral part of the home and is included in the price. In the No. 1 plan the living room extends across the entire front of the house. Two bedrooms are provided for in this plan. An extra bedroom 10 x 12 feet in size could be obtained if desired by taking the space from the end of the living room. This would leave the living room 16 x 12 feet in size and would give an arrange-

ment and number of rooms practically the same as in the No. 2 plan. This change can be made for you in the No. 1 plan for \$14.00 additional. Three bedrooms are arranged in the No. 2 plan. Complete detail specifications furnished on request.

These plans of the Elmwood home offer a fine choice of room arrangement in this attractive home. Two and three bedroom plans are available. Some of our customers who select the plan A have us place the bath room door in the partition between the kitchen and bath room. They then use the bath room for a pantry. Others have us provide a closed opening between the kitchen and bath room and they then use the bath room as a dining alcove. When this last described change is made we often omit the partition between the living and dining rooms, forming a living room 12' x 19' in size. Either of these changes may interest you

providing a bath room is not desired. Similar changes can be made in any Aladdin home. The 14' x 8' pergola type porch with weather proof sun is priced separately so you can purchase it with your home or not, as you prefer. Many purchase and use the Cedarwood porch on the Elmwood. With the Elmwood home you receive 6' x 8' built-up girders, 2' x 8' floor joists on 16-inch centers.

Ceiling height 8 feet. The roof has a one-quarter pitch. Complete detail specifications furnished on request.

THE ELMWOOD—

Price Given
On Enclosed
Price List

And We Pay
The Freight



ALADDIN

Readi Cut

Summer Cottages

Easy to Order--Easy to Build



The call of the wild—the urge of the great outdoors—can be answered with enthusiasm when one has an Aladdin Summer Cottage to go to.

Only high grade materials are furnished for Aladdin Summer Cottages. Clear and knotless bevel drop siding, knotless flooring, knotless partition material, knotless outside finish, etc., distinguish Aladdin Summer Cottages from the ordinary kind.

For instance, notice the style and thickness of our clear and knotless bevel drop siding as shown by full size drawing. This is unusual material, unusual high quality—and still our prices are low!

Immediately on receipt of your order we mail you a complete set of drawings, showing where every piece of material goes. You also receive a book of instructions and illustrations showing and explaining in a simple manner just how to build your cottage. Even if you are not experienced in carpenter work, **You Can Build Your Own Aladdin Cottage.**

Our price includes not only the materials but a large proportion of the labor—every piece of lumber in Aladdin Cottages is cut in our mills to its exact length, breadth and thickness—ready to nail in place on arrival.

All material for the erection and completion of your Aladdin Cottage will be on the ground at one time. Nothing forgotten nor overlooked. Summer cottages are usually built at places some distance from supply dealers. Trips back and forth are expensive. Your Aladdin Cottage arrives at destination complete—all lumber ready to nail in place—all windows, glass, doors, roofing, locks, nails, hinges, paint—in fact, everything.

In accordance with customary Summer Cottage Construction, the rooms are open to the rafters, and the studs on the inside of the outside walls are left exposed, showing the smooth interior surface of the Knotless Siding.

Any Aladdin Cottage can be shipped and delivered to you in about one week after receipt of your order. In another week your cottage can be ready to live in.

When erected, the cottage is identical to one built by a contractor except that the material and type of construction is far better than the average.

Specifications for Summer Cottages
—The Aladdin Company guarantees to furnish a sufficient quantity of materials to complete your summer cottage in accordance with the specifications listed below and further described in the reading matter concerning each cottage.

Quality of Materials—All lumber is guaranteed to be of high quality. Only Aladdin Certified Materials are furnished.

Girders or Sills—Built-up of 2" material to size specified on page showing cottage.

Floor Joists—Spaced on 24-inch centers, dressed and cut to fit. Size of joists specified on page showing cottage.

Studding—For walls, 2" x 4" placed on 24-inch centers, selected for quality and cut to exact length ready to be nailed into place. All walls have top and bottom plates which is the approved type of construction.

Wall Ties—Selected for quality, dressed and cut to exact length, ends mitered ready to nail in place.

Rafters—Placed on 24-inch centers and perfectly mitered and cut to fit. Size of rafters specified on page showing cottage.

Flooring—The flooring used in Aladdin Summer Cottages is Clear and knotless, tongued and grooved, accurately matched and machined to give a beautiful finish.

It is what is known as "inch" flooring but when machined down is actually $\frac{3}{8}$ of an inch in thickness. Cut in exact length ready to nail in place.

Siding—Clear and knotless bevel drop siding manufactured so it will have a perfectly smooth interior surface against the studs. All siding cut to exact length.

Partitions—Clear and knotless double-faced beaded ceiling held at top by grooved partition cap and secured to floor by quarter-round molding on each side. All openings cased to standard size so doors can be used if desired.

Roof Sheathing—Inch lumber to be laid tight. All sheathing dressed, cut to exact length and ready to nail in place.

Roll Roofing—Made of heavy weight felt base, saturated with asphalt and surfaced with natural green slate firmly imbedded in the heavy water-proof base.

Outside Finish—Such as corner boards, window and door frames, moldings, etc., manufactured of clear and knotless stock.

Window Sash—Manufactured of knotless stock. Glass in sash ready to hang. Windows check rail type, size of glass in each sash, 26 x 24 inches, with a few exceptions where a smaller window is required to carry out the proper effect.

Outside Doors—Clear and knotless, mortised for lock sets, glass placed in them, ready to hang.

Porches—The price quoted for each cottage includes the porch. Screens quoted separately in Price List.

Paints—Two coats furnished for exterior. Unusual care has been taken in selecting paints, as the appearance of your cottage depends to a great extent upon the quality of paint used.

Hardware—Frosted brass finish lock sets, 3 $\frac{1}{2}$ " butts for doors, spring window bolts for all check rail windows, casement locks and hinges for swinging windows, nails of all sizes in proper amounts to complete the cottage.

Blue Prints—Drawings and a book of instructions showing every step of erection are furnished so that even though you may not be a carpenter, you will know just how to erect your cottage.

Reversing Plans—Plans can be reversed without charge. This will place all rooms on opposite side of house from that shown.



FULL SIZE DETAIL OF THE CLEAR AND KNOTLESS BEVEL DROP SIDING FURNISHED

THE LONG BEACH . . .

Big, light and airy living rooms are desirable features of the three plans shown for The Long Beach. Each has, in addition, three bedrooms, toilet and kitchen.

Plan No. 3 is arranged so that upper and lower built-in berths can be installed giving a larger owner's bedroom.

This summer cottage is both sturdy and handsome and will give long satisfaction to its owner.

The sills are 4" x 6" built-up, floor joists are 2" x 6", wall studding 2" x 4" and height of partitions 7'6". See specifications for summer cottages on page 54.

Screens and other equipment are described on page 51 while prices will be found on enclosed price list.



LAKE LOUISE A woody atmosphere pervades this interesting cottage. An increasing demand for the log cabin type has caused us to present the Lake Louise this year for the first time.

The outside walls are built of special thick siding machined to give a true log effect, corners mitered and with log type porch columns.

The front porch can of course be screened, it being eight feet wide. We will quote a price on this type of siding for any of our summer cottages.

Two optional floor plans are shown and priced, each with three bedrooms.

Sills are built-up, size 4" x 6", joists are 2" x 6", rafters are 2" x 4", wall studding 2" x 4" and height of partitions is 7'6".



Troy, Ohio

Gentlemen:

The building material for the house has arrived and everything is just as advertised. Am very proud of it. Should I want to build again in the years to come it surely will be an Aladdin for I will always think of you first. I will send a list of names as soon as I can get to see them as there are several friends who want to see my house or material before they decide to build.

Walter H. Stoner

THE SHOREVIEW

The Shoreview is furnished in three popular sizes. Any one of them can be built on a very narrow lot. The Shoreview No. 1 is a snug little layout of four rooms and porch. It is conveniently arranged and good looking, too. The other arrangements are very well planned and give you the most in comfort and convenience. The sills are 4" x 6" built-up. The floor joists are 2" x 6" on 24-inch centers. The rafters are 2" x 4" on 24-inch centers and the roof has an exposed eave. The height of the interior partitions is 7' 6". See specifications page 54.



Prices Given
On Enclosed
Price List

Freight Paid Price



Pawtucket, R. I.
August 10, 1906

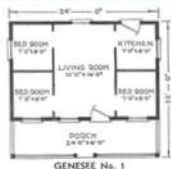
Gentlemen:
Would you kindly send me a book of your homes including summer cottages? A friend of ours has looked over ours we bought from you in 1901 and is interested. We have the Genesee No. 2 and are having had a lot of good times in it. It is located in the country on top of a hill overlooking a lake. The home came through O. K. and just as you represented.

Mrs. Wm. Bell



THE GENESEE

The Genesee is a strikingly good looking summer cottage and it is shown in three well planned arrangements. The Genesee No. 1 is 24' x 22' overall and contains a generous porch, living room, three bedrooms and kitchen. The full width of the cottage is utilized for a front porch. The Genesee No. 2 offers a unique arrangement of rooms, having living room and two bedrooms facing the front of the house. Kitchen and front and rear porches complete the plan. The Genesee No. 4 will attract you because of the wide expanse of living room across the front of the cottage. The sills are 4" x 6" built-up. The joists are 2" x 6" on 24-inch centers. The rafters are 2" x 4" on 24-inch centers. The height of the interior partitions is 7' 6". See specifications page 54.





THE SEAFORD—

Freight Paid Price

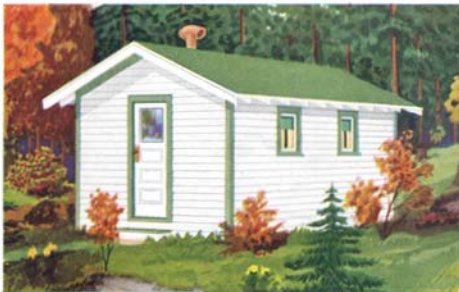
Price Given on Enclosed

Price List

Among the large types of summer homes, the Seaforth stands out for the many unusual qualities it possesses. The Seaforth No. 2 is a decidedly popular plan, a three bedroom design with a very convenient porch arranged at the side of the kitchen. The Seaforth No. 3 has an exceptionally large porch, ten feet deep, and six rooms. Remember, we can rearrange the partitions in any summer cottage to meet your needs. The Seaforth cottage has 4' x 6' built-up sills. The joists are 2' x 6' on 24-inch centers. The rafters are 2' x 4' on 24-inch centers. Roof one-quarter pitch. The height of the interior partitions is 7' 6". See Specifications Page 54.

THE HUNTER'S LODGE

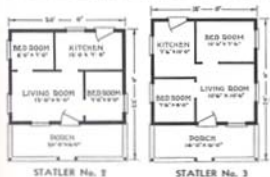
The Hunter's Lodge answers the demand for a low cost camp or "shack" in the woods. Two men can start work on the erection of the Hunter's Lodge in the morning and sleep in the completed building at night. It is a one room building and can be purchased in your choice of three sizes. The Hunter's Lodge No. 1 is 12' x 16' in size. The Hunter's Lodge No. 2 is 12' x 20' in size. No. 3, 16' x 20'. Bunks can be built up across the rear or sides or you can use double decked steel bunks or cots. We use only the best materials in Aladdin homes and summer cottages and furnish these some high quality materials for all Aladdin buildings, regardless of their size or cost. Due to the fact that the heavy, close fitting siding described on page 54 is furnished with the Hunter's Lodge, you will find the building easy to heat in the late fall months. The Hunter's Lodge contains a total of four 18" x 24" swinging casement windows, two being arranged in each side wall. A door with glass in the upper section is furnished at the front. See Specifications, page 54.



PRICES GIVEN ON
ENCLOSED PRICE LIST

THE STATLER

The Statler is a substantial, comfortable summer home, and is shown here in two different plan arrangements and sizes. The Statler No. 2 is size 20' x 22' overall having living room, two bedrooms and kitchen. The porch is 20' wide and 6' deep. This plan is one of our best sellers. The Statler No. 3 is size 18' x 24'. It is a popular type affording maximum room for its dimensions. The sills are 4' x 6' built-up. The floor joists are 2' x 6' on 24-inch centers. The rafters are 2' x 4' on 24-inch centers. The height of the interior partitions is 7' 6". See Specifications, page 54.





THE BAR HARBOR—An Ultra Modern Type—

Price Given
On Enclosed
Price List

And We Pay
The Freight

Extremely modern, but not "modernistic," the Bar Harbor presents the latest thought in summer home design. Its beauty evolves from its simplicity of form and line, yet it is as rugged as the Maine coast from where it draws its name.

Horizontal lines of the siding are accentuated by similar lines in the windows and door. The sturdy roof is in perfect harmony with this type. Two sizes are presented from which to choose. Room sizes in both plans are identical. And in both, the outstanding feature—the newest idea in summer homes, is the joining of living room and porch into one single unit.

The projecting part of the living room is entirely enclosed with full casement windows. It opens up perfectly as a porch, yet can be partially or fully enclosed in inclement weather. By this arrangement the livable spaciousness of the living room is almost doubled.

Plan No. 2 offers two bedrooms while Plan No. 1 has optional four bedrooms or three bedrooms and dining room. Should you choose Plan No. 1 and desire the rear porch and dressing room we will be glad to quote price for this latter feature.

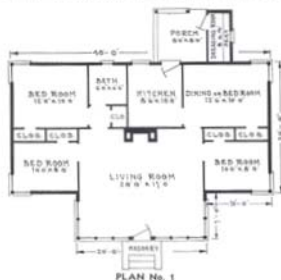
The Bar Harbor is furnished with 6" x 6" built-up sills, 2" x 8" floor joists on 24-inch centers and 2" x 4" rafters on 24-inch center. See specifications for summer cottages on Page 54.

Cicero, Ind.

Gentlemen:

Our house is not quite finished but we are getting along fine. Neighbors remark about the fine quality of material and can't see how I can get through with so little cost. They think a house like that would cost \$3000 or \$3500 and are surprised when I tell them I will get through and finish it for \$2500.

D. B. Zimmerman



Modern, efficient
manufacturing
methods, Ready-
Cut construction
and CASH Selling
result in lowest
possible prices.



ALADDIN SUMMER COTTAGES AND GARAGES

IN presenting this line of Aladdin Summer Cottages we have selected this year only those cottages which have proved themselves thoroughly practical during the past years. We have sold thousands of these designs. They can be found nestling on the banks of a thousand lakes and rivers throughout the entire country.

Three things are chiefly essential in a summer cottage—protection from the elements, a generous porch and plenty of light and air. In each cottage shown these things have been borne in mind. But always we have kept cost down. Strength has at no time been sacrificed, nor has weather tightness been overlooked. Every cottage is strong, tight and substantially built of the best materials.

A comparison of prices with what the same sized cottages can be built for through any other source will immediately show to you the remarkable saving, a saving you cannot afford to lose.

One feature in connection with the erection of your Aladdin summer cottage is of especial value. You will have every bit of material needed for the erection and **COMPLETION** of your cottage **ON THE GROUND AT ONE TIME**. Nothing will be forgotten or overlooked. Summer cottages are usually built at places some distance from supply dealers. Trips back and forth are expensive, in both time and money. Your Aladdin cottage arrives at destination **COMPLETE**. The lumber is all there, ready to nail in place—the windows, glass, doors, roofing, locks, nails, hinges, paint—in fact everything.

BUILD IT YOURSELF

Any one of The Aladdin Summer Cottages described in this book can be erected by you without previous experience. The materials are cut to fit in our mills ready for nailing in place, and you will be assisted by complete detailed blue prints and pictures. When erected the cottage is identical to one built by a contractor except that the material is far better than the average. Aladdin cottages are not sectional in any sense. They cannot be taken apart, or moved except as you would tear apart any dwelling house, or except as you could move any well built frame building. Satisfaction or your money back is guaranteed to every customer.

SPECIFICATIONS

The materials furnished with all Aladdin Summer Cottages will be found listed on page 54. You will note that in accordance with usual practice and customary summer cottage construction, we do not furnish any material for lining the inside of the outside walls or the ceiling. Also, inside trim, stain and varnish is not included. Two coats of high quality paint is furnished for the exterior of all summer cottages. You have your choice of colors. Front and rear outside doors are furnished but we do not include inside doors nor front or rear steps. Due to the fact that the height above ground varies so greatly in summer cottages, it is impractical for us to include steps in our prices. We therefore furnish materials from the sills up, only.

SCREENS

Can be included with any summer cottage shipment at the prices given on the enclosed price list. These prices include galvanized wire screening for porch or porches together with the necessary material to make the porch screen frames, high quality galvanized screen doors for front and rear, full length galvanized wire screens for all windows except those opening on to screen porches and necessary hardware for all screen doors, window screens and porch screens.

PRICES ON SUMMER SCREENS GIVEN ON ENCLOSED PRICE LIST

ASPHALT STRIP SHINGLES

Almost all summer cottages and garages are built with slate-surfaced asphalt roll roofing for the roof covering. For this reason Aladdin Summer Cottages and Garages are priced with roll roofing. However, we occasionally receive a request to substitute slate-surfaced, asphalt strip shingles for the roll roofing and we therefore quote prices on making this change in our specifications. See price list. On account of the low pitched porch roof on the Asbury, Shasta, Genesee, Statler and Shoreview cottages, shingles are quoted on the main roof only, roofing remaining on the porch roofs. Asphalt strip shingles are not quoted for the roof of the La Salle garages for, due to their very low pitched roofs, roll roofing is the only practical roof covering. With the La Salle garages we furnish a special, extra heavy, deck roofing which cannot be improved upon.

FOUNDATIONS

When ordering tell us whether you will build your cottage on a post foundation or a solid wall foundation so that we may furnish you with the proper foundation plan. We do not include foundation materials with any of our summer cottages. Cedar posts can be furnished for Aladdin Summer Cottages at 80 cents each for 8-foot posts or 40 cents each for 4-foot posts.

CHANGES

Our summer cottage partitions can be moved about during construction, practically at will, making it easily possible for you to rearrange the plan or alter room sizes if you wish to do so. We can sell you extra windows, etc., to assist you in making your cottage just exactly as you want it.

COMPARE QUALITY AND CONSTRUCTION WHEN COMPARING PRICE

THE LUNA

From the standpoint of good architecture, splendid room arrangement and comfortable accommodations, the Luna is a summer home of superior qualities, yet it can be erected at a low cost. It is large enough for the average family. The space over the front porch can be used for storage as the porch is ceiled overhead. This storage space is very desirable in a summer cottage. The porch is size 22x8 ft. Plan No. 2 provides a splendid size living room, a kitchen and three good bedrooms. The dimensions of the Luna No. 2 will permit this cottage to be built on a narrow lot. The Luna No. 3 contains three bedrooms, living room, kitchen and large porch. The Luna No. 6 is a big, roomy cottage with four bedrooms, living room and kitchen. The Luna has 4x6 in. built-up sills. The Luna No. 2 and No. 3 have 2x6 in. floor joists on 24 inch centers. The Luna No. 6 has 2x8 in. floor joists on 24 inch centers. The rafters are 2x4 in. on 24 inch centers, the eaves are the exposed type. The height of the interior partitions is 7 ft. 6 in. See specifications page 54.



LUNA No. 2



LUNA No. 3



LUNA No. 6



THE ASBURY

The Asbury is a cozy summer cottage of pleasing lines. The porch can be screened-in to give an outdoor living room. The Asbury No. 1 is the smallest Aladdin cottage. It has a living room and bedroom and it's just as well built as our larger cottages. The Asbury No. 2 is 4 ft. deeper and has three rooms. It's a cute little cottage for the modest demand. Plan No. 3 size overall, 16x22 ft.

The Asbury has 4x6 in. built-up sills, the joists are 2x6 in. on 24 inch centers. The rafters are 2x4 in. on 24 inch centers. The height of interior partitions is 7 ft. 6 in. The roof has a one-quarter pitch. See specifications page 54.

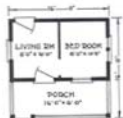
Spend the first few days of your vacation building your own Aladdin Summer Cottage. It's Fun, Easy and economical. Readcut materials and the instructions we furnish make construction fast, simple and accurate.

Shamokin, Pa.
July 13, 1936

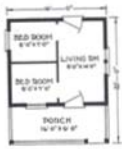
Dear Sirs:

We have given our catalog to a friend and kindly request you to send us another in case we need it. We are very much pleased with our cottage and proud to advertise your firm. It is much admired.

Leon C. Adams



ASBURY No. 1



ASBURY No. 2



ASBURY No. 3

THE OCEAN PARK

The Ocean Park is a unique design and something out of the ordinary in summer cottage architecture. Some fine features are incorporated in the four Ocean Park plan arrangements that will attract folks desiring the utmost comfort in a summer home. The main roof extends over the porch in each design, giving greater ventilation area inside and a place for storage as the porch is ceiled overhead. Plan No. 1 is a two bedroom arrangement, and is priced astonishingly low. Plan No. 2 is the same width but contains three bedrooms and rooms of larger proportions. The Plan No. 3 arrangement contains the inset porch and also two closets. Plan No. 5 is conveniently arranged, having a large living room and dining room, with three bedrooms.

Prices
Given On
Enclosed
Price List



THE SHASTA

Three sizes and plans are shown for the Shasta, one of our most popular summer cottages. Overall dimensions of Plan No. 1 are 24' x 24', porch, living room, three bedrooms and kitchen make up a very complete cottage. Plan No. 2 is 28' x 26' overall. Note the porch size, 28' x 8'. The interior affords a fine living room, three bedrooms and kitchen. Plan No. 3 is size 36' x 30' overall. A splendid summer cottage of the larger type. The sills are 4" x 6" built-up. The floor joists furnished for the Shasta No. 1 and No. 2 are 2" x 6" on 24-inch centers and for the Shasta No. 3 are 2" x 8" on 24-inch centers. The rafters are 2" x 4" on 24-inch centers. The height of the interior partitions is 8'. See specifications page 54.

See Specifications, Page 59



ALADDIN BUILDING ESTIMATES

EXPLANATION OF FIGURES—The labor figures given below have been classified according to the amount of manual work under widely varying conditions, covering a period of more than twenty years. They are, therefore, average figures, for average work, by average workmen, under average conditions. The price of labor and the cost of masonry materials are not the same in all localities. We are giving you figures from which the cost of construction can be determined fairly accurately by applying your own local prices for labor and masonry materials.

EXCAVATION—Under the heading, "3' Excavation," we give the number of cubic yards of earth necessary to remove in an excavation of that depth. One-third of that amount will be the number of cubic yards in one foot of excavation. If your excavation will be less than three feet or more than three feet you can multiply the number of cubic yards for one foot of excavation by the depth you intend excavating and the resulting figure will give you the number of cubic yards to remove in your particular case. Our figures are based on making the excavation one foot larger each way than the size of the foundation.

FOUNDATIONS—Under the heading, "16" Blocks," we give you the number of concrete blocks of that size necessary for a foundation wall 10 blocks high. As concrete blocks are 8 inches high, a 10 block wall is approximately 7 feet high. If a wall of different height is built, divide the quantities by ten and multiply by the number of blocks high your wall is to be built. If a cellar is not being built under your home, a seven foot wall will not be required. It will only be necessary

to carry your foundation down below the frost line. This is seldom more than 3 to 5 feet below ground or grade line and in many localities is considerably less. Should you use 24" blocks the quantity of blocks required will be one-third less. If a poured concrete foundation wall is to be used, you will find below the number of cubic yards of poured concrete required for each home. As the mix differs in every locality, your local mason dealer can give you the quantities of cement, sand and gravel required for this type of foundation and also quote you prices on the necessary materials for the number of cubic yards of poured concrete listed. The figures are based on a wall 8" thick, not including footings.

PLASTERING SURFACE—Under this heading we give you the number of square yards of surface in the home to be lathed and plastered, and with all openings included.

CHIMNEYS—Chimneys and fireplaces are sometimes shown on our plans to suggest a practical location. Since we do not cut the openings in our homes for them, you can change the location or omit them entirely if preferred. The amount of material required for chimneys is as follows:

One 8" x 8" flue chimney, 20 bricks to each foot of height.
Two 8" x 8" flue chimney, 20 bricks to each foot of height.
One 8" x 12" flue chimney, 35 bricks to each foot of height.
Two 8" x 12" flue chimney, 60 bricks to each foot of height.
For mortar allow 1/4 bbl. cement and 1/4 cu. yd. sand for each 1000 bricks.

NAME OF HOME	Cu. Yds. Excavation 3' Deep	16" Blocks 10 Blocks High	Cu. Yds. Poured Concrete 8" Wall	Carpenter Labor		Painting Exterior and Interior		Sq. Yds. Plastering Surface
				Men	Days	Men	Days	
Amherst	123	900	21	16	1	13	703	
Beacon	124	660	17	20	1	13	450	
Bed and No. 1	84	730	20	21	2	8	627	
Bedford No. 2	63	645	17	18	1	11	462	
Belhaven	125	730	17	14	1	8 1/2	310	
Bethesda	109	840	19	14	1	9	364	
Brewster No. 1	90	950	19	16	1	11 1/2	472	
Brewster No. 2	108	930	21	15	1	9 1/2	429	
Brookton No. 1	96	825	22	14	1	9	350	
Brookton No. 2	25	320	11	13	1	9	353	
Capital	118	720	16	22 1/2	1	10	388	
Colarwood	69	720	16	12	1	7 1/2	300	
Colonial No. 1	24	318	10	13	1	8	290	
Colonial No. 2	83	738	20	14	1	9	312	
Concord	100	1020	23	15	2	1 1/2	624	
Convertible 18"x12"	141	1410	12	1	1	1	116	
Convertible 20"x20"	49	600	13	8	1	6	179	
Cypress	57	660	15	9 1/2	1	6 1/2	243	
Dover No. 1	114	945	21	16	1	9	411	
Dover No. 2	121	1028	23	17	1	10	492	
Edgewood	82	780	17	12	1	7	287	
Elmwood	80	780	17	13	1	7	283	
Fairfield No. 1	112	1020	23	22	1	7	480	
Fairfield No. 2	120	1050	23	22	1	8	314	
Fernside No. 1	125	1050	23	16	1	9 1/2	367	
Fernside No. 2	125	1080	24	13	1	11	464	
Gables No. 1	96	870	19	8	1	8	315	
Gables No. 2	100	900	20	14	1	9	378	
Georgian	81	760	17	18	1	10	383	
Hamilton No. 1	106	1020	23	19	1	12 1/2	517	
Hamilton No. 2	92	855	19	21	1	6	710	
Hampshire No. 1	98	820	22	21	1	13	500	
Hampshire No. 2	123	1250	25	26	2	12	1020	
Hawthorne	111	930	21	19	1	9	415	
Larchwood B	92	940	19	14 1/2	1	9	423	
Larchwood E	97	870	19	15	1	10	433	
Madison B	98	915	20	14	1	8	401	
Madison C	115	1005	22	16 1/2	1	11	429	
Madison D	118	1050	23	17 1/2	1	12	494	
Maplehurst	98	825	18	12	1	7	284	
Marblehead A	100	850	19	16	1	6	345	
Marblehead B	112	915	20	24	1	8 1/2	495	
Marshallfield A	89	730	17	15 1/2	1	10	398	
Marshallfield B	110	900	20	17 1/2	1	11	458	
Maryland	81	730	16	16	1	11	500	
Newport No. 1	116	900	22	19	1	12	432	
Newport No. 2	123	1050	23	20	1	13	460	
Norfolk No. 1	100	825	19	14	1	9	387	
Norfolk No. 2	125	1020	23	23	1	11	478	
Oakwood A	69	720	16	12 1/2	1	8	329	
Oakwood B	63	690	15	11	1	7	255	
Oakwood C	75	760	17	13 1/2	1	8 1/2	300	
Oakwood K	77	790	17	14	1	7	277	
Pilgrim No. 1	130	1020	27	18	1	11	416	
Pilgrim No. 2	133	1050	27	17	1	11	500	
Plymouth No. 1	69	720	16	23 1/2	2	9 1/2	547	
Plymouth No. 2	81	780	17	25	2	9	609	
Poplar	111	930	21	14	1	10	416	
Redwood	84	820	14	9	1	6 1/2	238	
Rockport No. 1	113	930	21	17	1	11	542	
Rockport No. 2	121	960	21	15 1/2	1	12	415	
Shelburne	129	975	22	25	1	12	492	
Stratford No. 1	118	900	20	18	1	10 1/2	457	
Stratford No. 2	113	960	21	21	1	10	712	
Vassar	102	885	20	14	1	10	596	
Virginia	101	900	20	19	1	9	465	
Wellington	126	1005	22	26	1	14	796	
Whitehall	57	660	15	9 1/2	1	6 1/2	279	
Winston No. 1	115	915	21	14	1	8	420	
Winston No. 2	71	705	16	11 1/2	1	6	266	
Winston No. 3	96	615	14	9	1	3	202	

**BUILD IT
YOURSELF**

ALADDIN

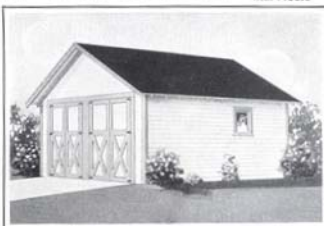
**READI-
CUT**

GARAGES

Freight Paid
when ordered
with House

Aladdin garages are made of only the best materials and when completed are sure to please the most critical person. The lumber is entirely cut-to-fit, making erection a short and easy task. Detailed drawings show where each piece of lumber is to be placed and nailed. Aladdin offers the perfect system of buying and building garages. All freight charges paid by the Aladdin Company. Safe delivery and no shortages guaranteed.

Specifications: Materials of the same high quality as used in Aladdin houses. Sills 4" x 4", studding 2" x 4" on 24-inch centers, Clear and Knotless drop siding for side walls, see illustration of siding on page 54. 2" x 4" rafters on 24-inch centers, roof sheathing laid tight. Best quality green, slate-surfaced, roll roofing. Slate surfaced asphalt strip shingles can be had in place of roll roofing at prices quoted. See Price List. Swinging doors, each pair eight feet wide and seven and one-half feet high, except Ford No. 1 doors 7'4" wide 7'3" high, Ford No. 2, 3 and 4 doors 8' wide, 7'3" high. Garages shown with solid doors can be supplied with glass top doors at \$10.00 per pair additional. Windows furnished when shown in illustration are swinging casements. Hardware for doors and windows, nails and two coats of paint for exterior. Materials Read-Cut. Drawings and instructions for building. All garages furnished without floors as most owners prefer to build floors of cinders or concrete.



THE CADILLAC

- No. 1, 18 ft. wide, 16 ft. deep.
No. 2, 18 ft. wide, 18 ft. deep.
No. 3, 18 ft. wide, 20 ft. deep.
No. 4, 20 ft. wide, 18 ft. deep.
No. 5, 20 ft. wide, 20 ft. deep.

Prices Given
On Enclosed
Price List



THE HUDSON

- No. 1, 20 ft. wide, 18 ft. deep.
No. 2, 20 ft. wide, 20 ft. deep.
No. 3 (3 Car), 26 ft. wide, 18 ft. deep.
No. 4 (3 Car), 26 ft. wide, 20 ft. deep.

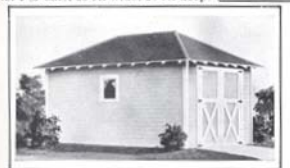
Prices Given
On Enclosed
Price List



THE LASALLE

- No. 1, 18 ft. wide, 16 ft. deep.
No. 2, 18 ft. wide, 18 ft. deep.
No. 3, 18 ft. wide, 20 ft. deep.
No. 4 (3 Car), 26 ft. wide, 18 ft. deep.
No. 5 (3 Car), 26 ft. wide, 20 ft. deep.

Prices Given
On Enclosed
Price List



THE STUDEBAKER

- No. 1, 12 ft. wide, 16 ft. deep.
No. 2, 12 ft. wide, 18 ft. deep.
No. 3, 12 ft. wide, 20 ft. deep.

Prices Given
On Enclosed
Price List



THE FORD

- No. 1, 8 ft. wide, 14 ft. deep.
No. 2, 10 ft. wide, 16 ft. deep.
No. 3, 10 ft. wide, 18 ft. deep.
No. 4, 12 ft. wide, 18 ft. deep.

Prices Given
On Enclosed
Price List

HOUSE	PAGE	HOUSE	PAGE
Amherst	37	Concord	39
Bacon	31	Convertible	41
Bedford	39	Cypress	38
Belwood	32	Dover	36
Birchwood	48	Edgewood	21
Brewster	14	Elmwood	33
Brookton	42	Fairfield	33
Camel	32	Fernside	46
Colarwood	39	Gables	32
Colonial	10	Garages	32

INDEX

HOUSE	PAGE
Gorgian	11
Hamilton	18
Hampshire	36
Hawthorne	17
Larchwood	34
Madison	9
Magdalen	35

HOUSE	PAGE	HOUSE	PAGE
Marblehead	43	Rockport	39
Marshfield	26	Shelburne	13
Maryland	49	Stratford	40
Newport	27	Summer Cottages	54-61
Norfolk	23	Vassar	33
Oakwood	19	Virginia	44
Pilgrim	22	Wellington	24
Plymouth	12	Whitcomb	41
Poplar	12	Winstan	47
Redwood	45		



Brewster Kitchen

The above photograph shows the kitchen of the Brewster which is described on page 14. Cabinet work of this type is furnished by us on special order to fit the kitchens of any Aladdin Houses. Photograph of other kitchen cabinets are also shown on pages 31 and 51.



Typical bathroom showing the attractive use of colors, the walls being either glazed tile or plaster marked off and glazed with colorful enamel.

Beautifully designed front entrance furnished with the Maplehaven, page 35, can be ordered for any Aladdin house.