



Sold By The  
**GOLDEN  
RULE**

# ALADDIN

## READI-CUT HOMES





## THE GABLES—Quaint and Original—

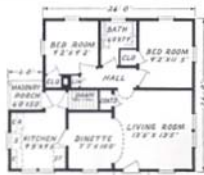
Price Given  
On Enclosed  
Price List

Unusual features distinguish this new and original home. A charming hood graces the front entrance. It is supported by well proportioned brackets and offers ample protection to the terraced steps. Roof lines, both gable and hip, are distinctive. The rear service porch is an attractive feature. Two sizes are offered to you, if you are attracted by the Gables. In both, the living room is large and given greater spaciousness by the alcove type dinette. Note that the kitchen has light and exposure on two sides. Cellar entrance is provided directly from the kitchen. Two bedrooms with ample closets, hall and bath offer every convenience and comfort. The built-in goodness, genuine quality of all materials and the beauty of this home will be a great satisfaction to every owner. Remember Aladdin's guarantee of satisfaction or your money back is your protection in building the Aladdin way. "Sold by the Golden Rule" has been tested by thousands of home builders to their lifetime gratification.



PLAN No. A

Shipment of  
any Aladdin  
Home can be  
made a few  
days after re-  
ceipt of order.



PLAN No. B

## THE ALADDIN COMPANY

Founded 1906  
By W. J. and O. E. SOVEREIGN  
HOME OFFICES AND MILLS  
BAY CITY, MICHIGAN  
CATALOG NO. 32

BRANCH OFFICES AND MILLS  
PORTLAND, OREGON  
MACON, GEORGIA  
TORONTO, CANADA

All Rights Reserved Copyright 1911 By The Aladdin Co.



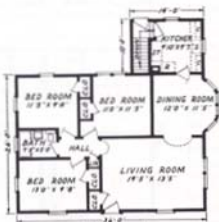
## THE ROCKPORT — Extremely Popular —

Price Given  
On Enclosed  
Price List

A touch of originality is given this wholesome design by the creation of a bay window at the right, whose projecting cottage type windows harmonize splendidly with the architectural plan. Note the good looking Colonial doorway. Trimmed shutters add balance to the windows and contrast to the color scheme. Another noteworthy feature is found in the pilasters at each corner of the house. The Rockport is shown in three sizes below, each with special features to recommend it. Large living rooms are a desirable part of all plans, each has attractive dining rooms with bedrooms and baths efficiently designed. Please note that any one of these three plans can be furnished by us to face either the wide way to the street or the narrow way to the street by transposing front door and a window in the living room. A study of Aladdin specifications will reward you with the knowledge that nowhere can be found quality to exceed that which is a part of Aladdin houses. Finer materials cannot be had for we have used the greatest care to seek out and use the very best. Send for details and give us an opportunity to prove beyond doubt the facts covering the above. Complete detail specifications mailed on request.



PLAN No. 3



PLAN No. 4

"Sold By The  
GOLDEN RULE"



PLAN No. 2



## THE PLYMOUTH—A Perfect Home—

Price Given  
On Enclosed  
Price List



FIRST FLOOR PLAN No. 3



SECOND FLOOR PLAN No. 3

The Plymouth is often referred to as a "perfect" home because it is average in size, pleasing in appearance and convenient and complete in arrangement. While the impression is that of a story-and-a-half house the second floor rooms are square with full height side walls. Two plans of the Plymouth are shown. In both plans, closet space is ample. This is particularly true in the Number 2 plan which provides for two closets off from the large, front bedroom, a closet off from each of the other bedrooms, a linen closet off from the hall and another large closet off from the hall large enough for trunks or storage. In both plans, a French door leads to the porch at the side. Ceiling height 9 feet first floor and 8 feet second floor. The main roof has a one-quarter pitch and slate-surfaced asphalt strip shingles are furnished for the roof covering. Complete detail specifications furnished on request.



FIRST FLOOR PLAN No. 2



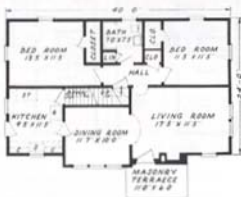
SECOND FLOOR PLAN No. 2



## THE SHELBURNE—Fascinating in Detail—

Price Given  
On Enclosed  
Price List

The Shelburne was first erected in Bay City and opened to the public by Aladdin as a Model Home. Public approval was instant and unanimous and confirmed the good judgment of our designers. It is modeled along ultra modern lines, strong colors and contrast in the chimney, enlivening the picture from the approach. An intriguing front door, with circle top and embellished with large antique hammered hinges adding distinction to the entrance. The interior presents facilities of every nature for a family of six. Curved arches lead to dining room and hallway, where you enter the downstairs suite of bedrooms and bath. Note the light, airy kitchen. Stairway leads to second floor from hall. While we have priced this home, including stairway to second floor, it is furnished without the upstairs being finished. A sub floor is however provided. We will be glad to quote you a price on the upstairs completely finished as shown in the plan at the right. Of course the upstairs can be finished off at any time in the future when it is convenient to do so. A double window is furnished in the end of the living room as shown on the floor plan.



SHELBURNE No. 5—FIRST FLOOR PLAN



SHELBURNE No. 5—SECOND FLOOR PLAN

Manhattan, Mont.

Dear Sirs:

Yes, you may refer anyone to us. We are very well satisfied with our home. It is located about five miles east of Manhattan, Mont.

J. G. Baynes.

Troy, Ohio

Dear Sirs:

I am proud to say that I built my house without the help of a carpenter. There are not words enough to tell what I think of readi-cut material. It's the only way to build.

Walter H. Stoner.

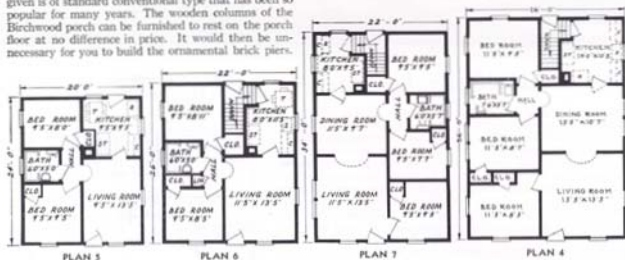




## THE BIRCHWOOD—Four Sizes—

Prices Given  
On Enclosed  
Price List

The Birchwood is a home of solid attractiveness. It will measure up to your highest expectations, from the strength of its sturdy timbers to the charm and beauty of its woodwork and finish. Shrewd buyers immediately recognize the opportunity to avoid paying the top prices charged by regular dealers—an opportunity made possible by dealing direct with the Aladdin Mills. The Birchwood is presented below in four different sizes. The exterior is identical in each case, except as to location of windows. The picture above is of Plan 3. The design of the Birchwood, with porch included in prices given is of standard conventional type that has been so popular for many years. The wooden columns of the Birchwood porch can be furnished to rest on the porch floor at no difference in price. It would then be unnecessary for you to build the ornamental brick piers.



Aladdin Industrial Housing Project

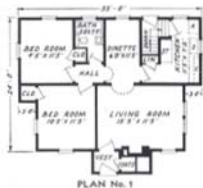
The E. I. du Pont de Nemours & Company ordered and erected over \$1,500,000 worth of Aladdin Houses. Aladdin Service met every requirement.



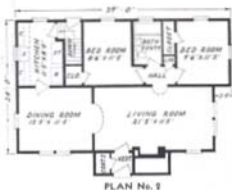
## THE MADISON—A True American Home—

Price Given  
On Enclosed  
Price List

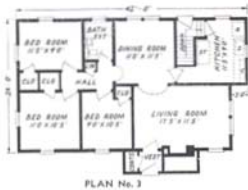
You will find this charming Madison home dotting the landscape in literally hundreds of communities. Its design is typically American and its popularity is assured. Owners of the Madison never fail to write us of their satisfaction and pleasure. The roof lines are especially interesting, while the sturdy chimney breathes hospitality. While the picture shows an open entrance, you will note the floor plans indicate a vestibule for which we furnish a beautiful circle top slab door. The inside vestibule door is a French door with divided lights. You will find three floor plan arrangements below, each studiously planned for greatest comfort, convenience and efficiency. Placement of doors and windows have been studied with furniture arrangement always in mind. In choosing the Madison you will find greater attachment and approval of your home as the future years come and go. Write us about your ideas.



The Construction Used in an ALADDIN HOME Is the Same  
as That Used in the Best Architect-Designed, Contractor-Built  
House Erected Anywhere



—  
SAVE  
WASTE  
—  
SAVE  
TIME  
—  
SAVE  
MONEY  
—





## THE VIRGINIA—Different-Interesting-Well Balanced—

Price Given  
On Enclosed  
Price List

The Virginia attracts instant attention because it is different, interesting and well balanced. The simplicity and economy of Colonial architecture are the keynotes of the Virginia. The house presents a cozy appearance that tells you it is more than a place to live—it is a Home. Both plans are alike in general arrangement but one contains three bedrooms and the other two bedrooms, allowing you to make your selection according to your requirements. In both plans of the Virginia the living room extends out at the side, thus giving a sun parlor effect to

the home. You will notice that the projecting portion of the living room is lighted by windows on three sides, a virtual sun parlor. The bedrooms and bath room are separated from the living quarters. Large, generous clothes closets are provided for each bedroom which add a very valuable feature to the home. Our designers have used every available inch of floor space in these plans which mean economy to the builder. The greatest width of the Virginia home is thirty feet, making it possible to build this home on a lot forty feet or more in width.

### The Savings After Building a Small Home Will Add More To Your Happiness Than a Big Home



VIRGINIA PLAN No. 3

Brighton,  
Rochester, N. Y.

Dear Sirs:

In reference to your letter concerning our Aladdin Virginia home, it was very satisfactory and we would be willing to show anyone our home.

Everyone who has seen it so far has praised the design and workmanship. In building a ready cut Aladdin house, we have saved a considerable sum of money. My brother who built the house was well satisfied with the construction which saved a lot of labor and material.

John Uebelacker, Jr.



VIRGINIA PLAN No. 4





## THE PILGRIM—Three Splendid Plans—

Price Given  
On Enclosed  
Price List

A skillful blending of Colonial and Modern details is immediately evident in the picture of the Pilgrim shown above. The main structure is in graceful proportions, yet the usual severity of the conventional Cape Cod is softened by the unusual treatment of the entrance and the addition of an exceptionally large window in the living room. Our designers have matched the beauty of the exterior with three unusually desirable interior plans.

All plans present large living rooms which are entered from the front vestibule.

Plan No. 2 features a library and a space for breakfast room set in kitchen. Stairway to second floor can also be furnished upon request. Plan No. 4, while somewhat smaller than the foregoing, retains all the handsome features shown in the photograph above, at much lower costs. Our list prices do not include this stairway, windows or floor for second floor. These plans are of course designed to meet all F.H.A. construction requirements. Write for detail specifications.



PLAN 4

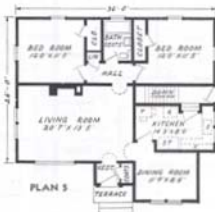


PLAN 2

Richmond, Va.  
Gentlemen:

Please send me one of your catalogs of Summer Cottages, as I am thinking about building another one on the beach. I am the owner of one of your cottages my husband purchased about fifteen years ago and have enjoyed having this cottage very much.

Mrs. T. J. Talbot



PLAN 3



## THE LYNWOOD — Beauty With Economy —

Price Given  
On Enclosed  
Price List

The Lynwood seems to breathe serenity, comfort and peace of mind. It is a dainty architectural gem, good to look at, good to live with and good to live in. It is an example of the truth that: "the savings after building a small home will add more to your happiness than the luxuries of a big house." The perpendicular siding on the front gable, the artistic columns supporting the porch roof and the six-light upper window sash are attractive touches to the exterior of the Lynwood. Study the living room in each plan below. The placing of the windows in the corner, while giving maximum light and air, afford three almost unbroken walls for piano, davenport or tables. In both plans the kitchen is most efficiently planned to conserve space and save steps. Each bed room has two walls, either of which are suitable for placing beds. Segregated hall adequately separates the bed rooms and bath from living room and kitchen. In the compass of the Lynwood's dimensions it would be impossible to create greater living space and convenience. Shall we tell you more about it?



PLAN A

Dear Sir: I shall be glad to recommend anyone to buy an Aladdin ready-cut home, as material is all as represented in catalogue. We are very much pleased with the Marshfield A plan, house is sure a beauty. We have had plenty of compliments on it. Our home does not take a back seat for any of them. A satisfied customer.

Mr. & Mrs. Harry W. Reams,  
Lima, Ohio.



PLAN B



## THE BRENTWOOD — A Notable Design —

Price Given  
On Enclosed  
Price List

Here's a home of sunshine, flowers, trees and foliage, one of Aladdin's most notable offerings to home builders. The observer has a desire to stroll up the walk and step into a home that breathes hospitality and charm.

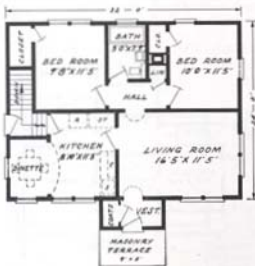
The excellent balance of the exterior is immediately apparent to the observer, the terraced entrance surmounted by a gabled vestibule and flanked by twin mullion windows.

Two sizes are shown below for the Brentwood. Each has many desirable features and each will furnish the owner

with the utmost home satisfaction.

Plan A is 32' x 24' and presents well proportioned rooms of maximum efficiency and convenience. Note alcove dinette with particularly splendid lighting.

Plan C is size 36' x 26'. Altogether the Brentwood fulfills the highest expectation of exacting home-builders. Iron railing on terrace not included. You have only to call in the Aladdin Organization for assistance in arranging financing of your home. Our facilities and experience are at your service.



PLAN A



PLAN C

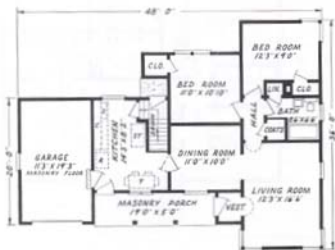


## THE ORLANDO—Of Southern Inspiration—

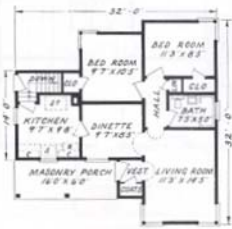
Price Given  
On Enclosed  
Price List

Our designs were inspired by a study of the latest trend in Southern and Western architecture when this attractive plan was developed. Its lines are beautifully proportioned and while it is of chaste simplicity, the contrasting highlights and shadows form a true harmony. Interesting is the contour of the roof, and perfectly balanced, too. A touch of the "modern" is manifest in the placing of the living room windows at the corners. This is most practical, for while affording the maximum of light, actual wall space is really expanded.

The interiors warrant a most careful study and you will be rewarded by the discovery of a home ideal in its convenience and charm. Each room will be found to measure up to its expected spaciousness and comfort. Ample light and ventilation have been provided. While the garage is omitted from the Orlando No. 2, the same interior conveniences are present on a slightly more modest scale. Wouldn't you like to discuss this interesting home with us? Write us about it.



The ORLANDO NO. 1



The ORLANDO NO. 2

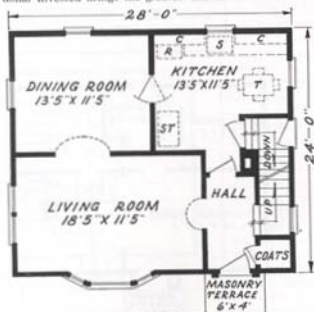


## THE ARLINGTON—A Handsome 2-Story Home—

Price Given  
On Enclosed  
Price List

Here is a New England type that has become a vogue in modest two-story architecture the past year. Its inspiration is derived from those quaint farm houses nestling in the hills of Massachusetts and Connecticut. While its return to popularity is but recent, it has been always acknowledged as sound architecture. It will be as good and salable in the future years as it has been for two hundred years past. A further recommendation is its economy. Each dollar invested brings the greatest amount of room, con-

venience and comfort. No money is wasted in unnecessary furbelows, or embellishments. The pilastered entrance is true Colonial, while the bay window is both decorative and serviceable. A study of the interior will reward you with the discovery of many conveniences thoughtfully arranged by our designers. The overhanging second floor makes possible incorporating generous sized bedrooms splendidly arranged. If you are desirous of building a two story home you could not make a wiser choice than The Arlington.



ARLINGTON—FIRST FLOOR



ARLINGTON—SECOND FLOOR





## THE WEBSTER—Grace and Beauty—

Price Given  
On Enclosed  
Price List

A spirit of friendliness and a hearty welcome greet all who approach this distinctive entrance. New England in character, The Webster will appeal to the thrifty because it offers so many satisfactory features of wholesome and complete living—at such low cost. Two plans are offered. In each plan the living room and bedrooms are of generous proportions, all rooms have cross ventilation and are well lighted. Aladdin quality materials added to efficient planning combine to create a home of high value.

Troy, Ohio.

Gentlemen:

I am enclosing two pictures of our home built in 1936, which you will recognize as Ferndale and the garage as LaSalle.

We love our home very much and are proud of it. We have had many people stop to look it over—and we have seen people stop and take pictures of it.

I would very much like to receive a copy of your new catalog and am thanking you in advance for sending it.

Louis H. Chaney.





## THE KINGSTON—For Those Who Love a Porch—

Price Given  
On Enclosed  
Price List

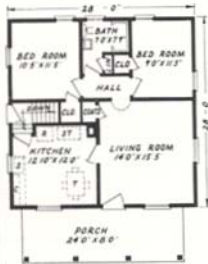
The Kingston was planned by our designers to meet the wishes of those home makers who want a generous-sized and attractive front porch. You will agree, we believe, that we have achieved a feeling of beauty, hospitality and comfort with this 8 x 24 ft. outdoor living room. Its square columns, embellished with short pillars and railing above are in architectural harmony and also give the whole picture individuality and distinction. The first model of the Kingston nestles in a grove of elms and oaks in Bay City. While both the plans below are of the same size you are offered a choice between two very attractive interior arrangements, one featuring the kitchen at the front, where many housewives prefer to have it. Each has grade cellar entrance, generous closet space and well proportioned rooms. We will be glad to give you, upon request, all further information you desire.



PLAN A

Dear Sirs:

Now that we are living in our new home, the Newport No. 2, we must write to you and tell you we are more than pleased with it and were surprised at the amount of all materials left. You may certainly use our name as an owner of an Aladdin home and we would be glad to be of any service whatever to you in showing anyone our home. It has been a surprise to all who have seen it as to convenience, room and also outside appearance. Yours, Mr. and Mrs. Frank E. Becker, High St., Pine Grove, Pa.



PLAN B



## THE WINSTON—Latest in Exterior—

Price Given  
On Enclosed  
Price List

One of the newest developments in plastic building materials is the Cement-Asbestos wall shingle which is pictured above on the side walls of the Winston. These shingles are 24 x 12 inches in size, fireproof and never have to be painted. We can of course furnish them in place of siding for any Aladdin house. Write for information.

The Winston is one of our newest designs and we present it in three attractive sizes. A special feature of this home is the original columned entrance, rising from a masonry terrace. A study of the three floor plans below will show you a choice of size and design that covers a wide range of investment. Plan No. 1 is 24 x 40 feet over all and includes large living room, sun room, dining nook, kitchen, grade cellar entrance, two bedrooms, bath and closets. Fireplace may be omitted if desired. Plans No. 4 and 5 will warrant careful study to appreciate their desirable features. All materials in all three of these Winston plans are of the same high quality and the sturdy construction is unchanged from that of the largest Aladdin home. Write us about the plan that appeals to you. Complete detail specifications mailed on request.





## THE BREWSTER—Beautiful in Its Simplicity—

Price Given  
On Enclosed  
Price List

Supremely good taste was employed by our designers when they formulated the Brewster. It is a choice architectural gem, clean in line, employing a form of simple beauty and exquisite simplicity. It is truly a work of art yet most practical in execution for its very simplicity is reason for its astonishingly low cost.

**You receive highest quality materials, lowest prices, prompt shipment and a guarantee covering quantity, quality and safe arrival.**

Waste of materials is eliminated, every foot of lumber giving 100% value in space, convenience and comfort. The columned and hooded entrance incorporates a commodious vestibule. The choice of two interiors are afforded you, each with about the same facilities but differently arranged. Each has excellent living room, two bedrooms, dinette, bath and closets.

If you have a preference for shingled outside walls we can also meet your wishes. While a concrete block foundation is shown in the above picture, the foundation can be built of solid concrete, brick or tile. Wood shingle roof is also available on request.



Gentlemen:

We will be glad to have you refer any customers you wish to us. We are pleased with our house and will show anyone thru and answer letters of inquiry. We are enclosing photographs of our home which we believe is better than the one in your catalog.

J. F. Schnabel

**An Aladdin Home is Safer than a Wall Street Investment**





## THE SUMMERSET—Typically Cape Cod—

Price Given  
On Enclosed  
Price List

Beauty and balance distinguish this perfect example of Cape Cod architecture. Thrifty New Englanders evolved a type of home in revolutionary times that matched their well known characteristics of simplicity, directness, economy and common sense. That it is sound architecture is evidenced by its return to popularity on the designing boards of the present day's leading architects. A living room 18' 5" x 13' 5"! It's of a size found in few houses twice as large as the Summerset. A dining room, kitchen and grade cellar entrance complete the perfect accommodation on the first floor. Master's bedroom matches the living room in spaciousness, and thoroughly adequate closet space is provided. Every dollar invested in this home gives magnificent values. Quality is built into every part—Aladdin Certified lumber and Aladdin Knotless finish. Complete detail specifications on request.



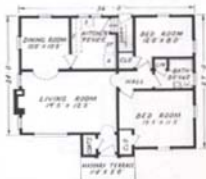




## THE BEVERLY—Marked by Grace and Beauty—

Price Given  
On Enclosed  
Price List

The recessed entrance of the Beverly, edged by fluted pilasters, and a genuine classical front door give distinction to this home. Four gables embellish the roof lines in an interesting way and an artistic touch is the substitution of smooth surfaces for the conventional siding in the gables facing the front. The cottage type window of wide expanse in the living room insures an exceptionally light and cheerful home. Below you will find a three bed room plan and a two bed room plan. Nothing has been omitted by our designers that goes to make a livable, comfortable and complete domicile. Vestibule and cloak room are desirable adjuncts to the home having permissible space for these advantages. All rooms are well proportioned for the service required of them. Kitchens of high efficiency and ample accoutrements are the result of careful planning. Should you desire The Beverly you will make a happy decision and one of great comfort and satisfaction. Write us. Every item of material furnished for the Beverly is of the very finest grade of material and is guaranteed by us to meet with your complete satisfaction.



PLAN NO. 1

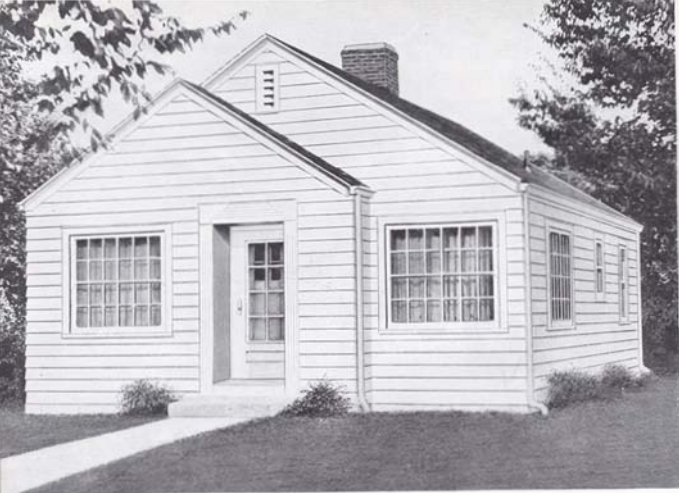
Feb. 29, 1940.

Aladdin Co., Bay City, Mich.

Dear Sir: I consider it a privilege to let you use our name. For we are deeply satisfied with all the materials supplied us by you. Our house, known as Colonial No. 2 Special is now nearing completion and we have visitors coming in from all around to inspect it. Everyone seems as well pleased with the building as we. Sincerely, F. C. Baker, Fruitland Acres, Hubbard, Ohio.



PLAN NO. 2



## THE SUNSHINE — An Honor Design —

Price Given  
On Enclosed  
Price List

New and sparkling is this latest creation of Aladdin designers. It received first honors in a recent contest. The Sunshine promises to be a first choice of many homebuilders this year, too. Wherever it has been shown, it has received high praise for exterior beauty and effective interior planning.

Three sizes are shown in the plans below. One 22'x30', one 24'x32', and one 24'x36'. Each plan offers the last degree of efficiency in arrangement and remarkable utilization of space. Observe the careful location of windows and doors to give greatest possible amount of usable wall space. Exceptional closet space is provided in each plan.

You will be permanently happy in the possession of any of the three Sunshines, because through the efficiency of Aladdin Pre-fabrication and economy of erection cost every dollar invested will give full and highest value.



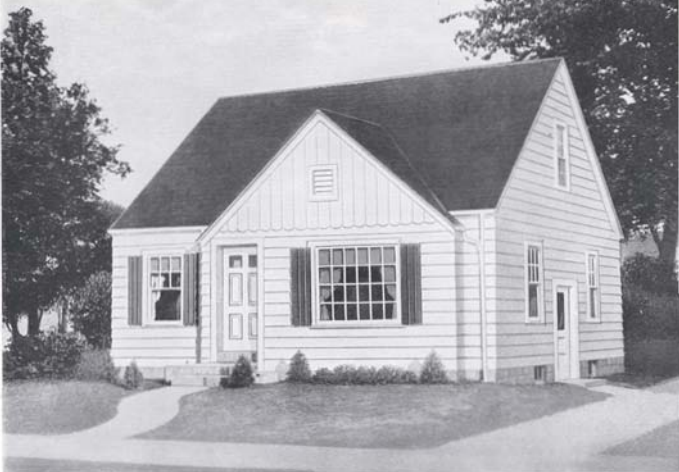
PLAN D



PLAN B



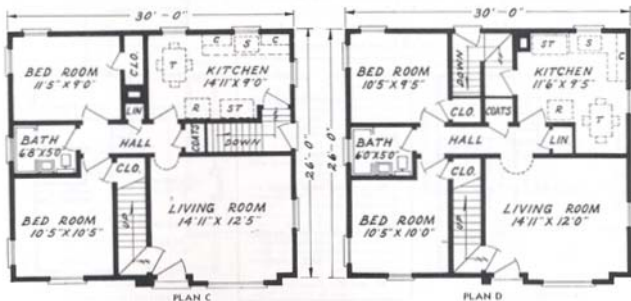
PLAN E



## THE DRESDEN—From Connecticut Hills—

Price Given  
On Enclosed  
Price List

Conservative and dignified aptly describes The Dresden, a design whose inspiration comes from the Connecticut hills. At first glance it appears to be a one-story home and its cost approximates just that. Yet provision is made for two good bedrooms on the second floor. The living room is of splendid size and well proportioned and lighted. The Dresden, as priced does not include material for finishing off the second floor but should you desire this accomplished, we will quote price on request. This arrangement adapts itself to a two-bedroom, three bedroom or four bedroom plan, and at a cost astonishingly below expectations. Complete detail specifications on request.





## THE MARSHFIELD—A Snug, Distinctive Home—

Price Given  
On Enclosed  
Price List

The Marshfield is a snug little home and the careful handling of fine details makes it a home of unusual distinction. It is compact, making it a home easy to heat and take care of. A fine location for a fireplace is suggested by the plans and illustration. The Marshfield is priced with siding or shingles on the outside walls. If you desire to shingle the outside walls, specify them and we will furnish them for you at no additional cost. The Marshfield can be purchased in two sizes. Plan C has a conveniently located dining space in the kitchen. A great number of small homes today are being built without a dining room and there are many good reasons for not including them. If no dining room is arranged it means a smaller home to build, to heat, to clean and maintain. It saves the cost of expensive dining room furniture. Still, many people prefer a dining room and therefore Plan D of the Marshfield is also offered. Plan D is practically the same as Plan C with the exception that a dining room is provided in place of the dinette.

The modern trend in home building has definitely turned to  
Small, Convenient Houses.

Lower Investment Costs - - - Lower Maintenance Costs  
and Easier Housekeeping all favor small homes.



MARSHFIELD—PLAN C

Auburn, N. Y.

Gentlemen:

We have been living in our home since October and are very much pleased with it. It is just what we have always wanted and we cannot praise it highly enough. We wish to thank you for quick shipment and service too. Had plenty of material to work with and some left over.

We have had many people ask to inspect our home and all were very much interested. We find that we saved exactly \$1,400 in building this home in place of one from a local lumber dealer. The oak flooring was of a superior quality—everyone remarked about its thickness. You may refer prospective customers to us.

Mr. and Mrs. James L. Jones



MARSHFIELD—PLAN D

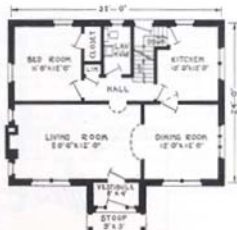


## THE CONCORD—One of Aladdin's Newest—

Price Given  
On Enclosed  
Price List

Distinction is given this charming design by an entrance at once original and appealing. Pillars grace the gabled vestibule while an arched ceiling adds a new touch to the design. Narrow side lights on each side of the front door afford light to the vestibule. The main structure of the Concord is beautifully proportioned. Besides a splendidly spacious living room, the first floor contains a suite including bedroom, lavatory, linen closet, and clothes closet. These are entered from the separate hall from which the stairway also leads to the second floor. Grade cellar entrance occupies the space under the main stairway. All four downstairs rooms have double exposure for light and air. The fireplace may be built in as shown or omitted if desired. On the second floor is found two well planned bedrooms, bathroom and four closets. Always keep in mind the high quality of materials built into all Aladdin Houses and that this quality can be had at such great economies only from The Aladdin Company. The Redit-cut System backed by volume production is the reason. Our Golden Rule Service and money back guarantee are your protection. Complete detail specifications mailed on request.

Shipment of  
any Aladdin  
Home can be  
made a few  
days after re-  
ceipt of order.



FIRST FLOOR PLAN



SECOND FLOOR PLAN





## Voluntary Appreciation of ALADDIN'S Golden Rule Business Policy

Some nine years ago Mr. Walter Fredericks of Charleston, W. Va., began buying and building Aladdin houses. Since that time, from a small beginning, he has built somewhat over two hundred of our houses in Charleston. His market runs to larger than average types, several of which are shown on this page. He has risen to a dominating position in his community as a builder of the very finest examples of modern American homes and we are indeed gratified to reproduce here a letter received at the completion of another successful and profitable business year.



WALTER FREDERICKS  
INVESTMENTS  
CHARLESTON, W. VA.

October 21, 1940.

The Aladdin Company,  
Buy City, Mich.

Gentlemen:

To your entire organization, and all who have had a part in the work of supplying labor and materials for the many Aladdin homes in 1940 myself and our organization here owe appreciation and gratitude.

First, for the uniform courtesy, fairness and prompt service received, making it possible for us to keep constantly busy every working day in 1940 in our work here, and

Secondly, by maintaining a high standard of accuracy, a high standard of quality, far beyond that which is ordinarily experienced in the usual channels of the lumber industry and in that way making our work easier and satisfactory to the ultimate owner of the home.

It is my heartfelt wish that each of you may continue to prosper and have that satisfaction of a thing well done and honestly provided for the coming year.

For ourselves, we pledge full cooperation and continued effort in the marketing, construction and sale of Aladdin Homes, along the clean cut lines we have adopted and maintained in the past years, carrying out your policy of the Golden Rule in all things pertaining to the home not only so far as materials are concerned, but the final completed product, which enables the owner to point with pride to the fact that it is an Aladdin product in all its phases.

So I say to all of you, say the best in all that may come to each, The Sovereign Brothers, Mr. White and all those many individuals whom I do not know by name may have those things nearest their heart in 1941, and may the True Christmas Spirit be with you all.

Most sincerely,

*Walter Fredericks*  
WALTER FREDERICKS.

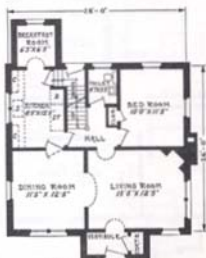


## THE HAMILTON—A Tremendously Popular Design—

Price Given  
On Enclosed  
Price List

Many Aladdin houses have been built of brick veneer. We, of course, will quote on any design in the book, omitting siding and casings and furnishing special window and door jams. The Hamilton illustrates the attractions of the type. While the vestibule entrance shown above is of stone, it can be constructed of brick or, as is sometimes done, in wide siding. The Hamilton is a beautifully proportioned structure and will match the finest homes in any neighborhood. We will, of course, furnish this design with siding if preferred. Every modern thought is expressed in the arrangement of the interior. Note the large vestibule with cloak closet, arched opening leading from living room. Kitchen design is planned for step saving. Two splendid bedrooms are found on second floor with linen closet and bath.

We are proud to present this new Aladdin home, confident that it will give the highest satisfaction to every owner. We would like to give you more information about it if you will write us. Complete detail specifications will be mailed on request.



FIRST FLOOR PLAN No. 1



SECOND FLOOR PLAN No. 1



FIRST FLOOR PLAN No. 2



SECOND FLOOR PLAN No. 2



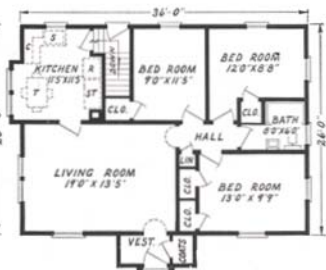
## THE BRISTOL—Modern American—

Price Given  
On Enclosed  
Price List

The Bristol is embellished with two typically Colonial features, the front entrance and the bay window in the dining room. Fluted pilasters bordering each side of the front door, are topped by a head casing designed with dentils. This beautifully proportioned ensemble is of true Colonial inspiration, and affords a genuine welcome to those who enter its portals. The Bristol was recently built by a Bay City physician, who is loud in his praises of its beauty, convenience and economy. Its interior arrangement includes every desirable feature of the ultra modern American home. It surely deserves a careful study to be fully appreciated. We will be glad to discuss with you further details of your individual wishes. Write us about the plan of your choice.



BRISTOL A



THE BRISTOL B



## THE NORFOLK — Two Interesting Plans —

Price Given  
On Enclosed  
Price List

Highly popular in its appeal to present day home builders is the type represented by the Norfolk. And there is good reason behind this popularity. Its simplicity of design, the absence of unnecessary embellishment or furbelows, insure that no money is wasted. Every dollar expended for material and labor achieves the maximum of home comfort, convenience and utility. Two plans are

shown below to meet your particular choice. In Plan No. 1 access to the attic is provided by an enclosed stairway. It is of course possible to finish off the attic for use as either storage or added sleeping quarters. Plan No. 2 includes a utility room when basement is not desired. Complete detail specifications mailed on request.



PLAN No. 1



PLAN No. 2



## THE COLONIAL — Designed for Economy — Price Given On Enclosed Price List

This lovely home follows the traditional New England feeling and is commemorative of the early years of the last century when simplicity and economy were so important to home builders. It avoids decorative frills while abounding in vitality and form.

We have shown two interior arrangements. The kitchen provides adequate location for breakfast room set or dining table, and ample space for cabinets, stove and

sink. Two bedrooms, bath room and three closets complete the plan.

Plan No. 2 incorporates all of the above features. A cellar stairs is shown to basement. Should a stairway be desired to attic, it can be furnished on request by omitting the linen closet, and the stairs will lead up from the hall.

Detail specifications mailed on request.



PLAN No. 1

Lockport, N. Y.

Dear Sirs:

I have been recommending your homes to every one I know that are interested in homes. We are very well satisfied with every single thing, the lumber was in perfect condition and plenty of it. If I were to build another house it would be Aladdin Read-Cut.

Herman Hartman



PLAN No. 2



## THE BROCKTON — Inexpensive — Charming —

Price Given  
On Enclosed  
Price List

The Brockton is one of the most popular small homes of the past year. A careful study of its interior arrangement reveals the last word in comfort, convenience and efficiency. Ample wall space and cross ventilation have been accomplished in every room by our designers. Note that it contains four closets. Two plans are presented, the

No. 3 Plan shows a cellar stairs where a basement is part of the owner's wishes. A stairway leads from living room to second floor which offers a world of added space. Our price does not include flooring or partitions for the second floor but these things can be added now or later if desired. Write us for detail specifications.

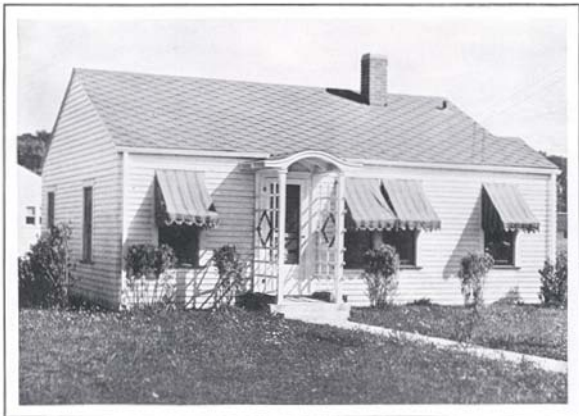


PLAN No. 3



PLAN No. 4





## THE MAPLES—Radiantly Modern—

Price Given  
On Enclosed  
Price List

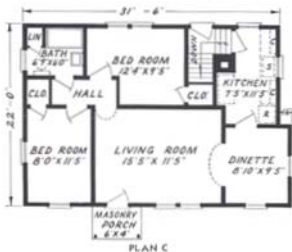
There is something about the Maples, one of Aladdin's newest creations, that seems to radiate warmth and cosiness the minute you see it. Sunshine and gladness must reign in such a household. Every facility found in more expensive homes is provided here. A generous sized living room with splendid wall space, sizable dining nook, efficient kitchen, bathroom conveniently located off from hall and adequate closets combine to make for comfort, convenience and efficiency. You will be happy in the possession of this charming home should you choose it for yourself. The modern trend is definitely toward the smaller home because you thereby achieve lower first cost, lower up-keep and easier housekeeping.

Gentlemen:

Hollandale, Miss.

Just a few lines to let you know how much we like our house that we bought from you six months ago. We are satisfied in every way. It is of sound construction and everything in it is the best. Many of our friends who have come to see it are completely sold on Aladdin Homes. I honestly believe that I saved \$1,000 by buying your home instead of building of local materials. I am enclosing a picture of my home and hope you will sell more of them.

A. S. Truitt.







### The Dining Room

Simplicity and good taste are outstanding features of Aladdin dining rooms. Correct proportions and correct wall spacing with the proper arrangement of doors and windows set a definite standard equaled only in the more expensive homes.

## Interesting Pictures of ALADDIN Interiors

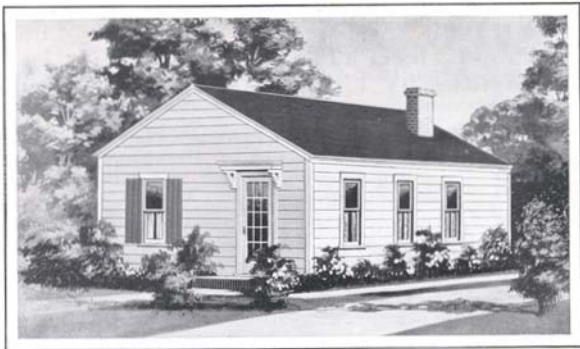
It has been said that the kitchen and bath rooms come first in the hearts of good housekeepers. And that is as it should be. For is not the kitchen especially where she rules supreme—it's her workshop. Our designers bear this ever in mind and have given to Aladdin designs the latest and best ideas ever developed.



Typical Bathroom



Efficiency Kitchen—The MARSDEN



## THE OAKWOOD—Sure to Please—

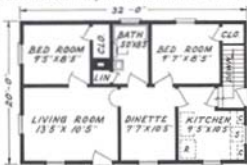
Price Given  
On Enclosed  
Price List

Here is as pretty a home as you will find anywhere—modern in design and attractive in appearance. There are six plans of the Oakwood, all different in size and arrangement. In plan A of the Oakwood, the bath room would provide a roomy pantry, opening off from the kitchen, if the bath room is not desired. In plan B, the middle bedroom

could be reduced in size and used for a bath room if desired. In this way the other two bedrooms could be increased in size. In Plan C the bath room can also be converted into a pantry if this change is wanted. Write us for further information concerning these or similar changes in plan arrangements. Since the Oakwood home is designed in pure Colonial architecture the eave construction conforms to that style.



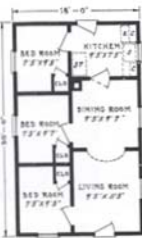
PLAN M



PLAN L



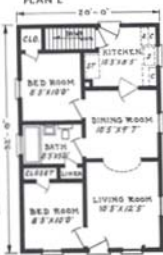
PLAN A



PLAN B



PLAN C



PLAN K

A very popular and widely copied plan designed by Aladdin. It is complete in accommodation including a well placed bath room.

Plan "B" will go on narrow lot and offers a fine arrangement for a family of six—three bedrooms, living-room, dining room and kitchen.

A thoroughly proven plan offering everything demanded for a home of five rooms and bath. It is impossible to secure greater utilization than is here represented.

A special feature of the Oakwood Plan "K" is the inclusion of a cellar stairs. If not wanted the space can be converted into a pantry.

# ALADDIN Enters Thirty-Fifth Year of Pre-Fabricating Home-Building Materials by the Read-Cut System



*The ALADDIN Organization's Long Experience Means the Perfection of Machine Production, Saving of Labor on the Job and Elimination of Waste of Materials.*

## ALADDIN SYSTEM IS BUILT ON THIS PRINCIPLE

Modern power-driven machines can do BETTER work at a lower cost than hand labor. Then every bit of work that CAN be done by machine SHOULD be so done. The steel worker with a little hack-saw trying to cut and fit the steel girders of the modern skyscrapers should be no more out of place than the modern carpenter cutting sills, joists, and rafters. The skyscraper framework is cut to fit by machines in the steel mills, marked and numbered ready for erection.

The lumber in the Aladdin houses is cut to fit by machines in the Aladdin mills, marked and numbered ready for erection. The steel system is over fifty years old—the Aladdin system over thirty-five years old.

An Aladdin Read-cut Home saves you from twenty to thirty percent in your labor bill because the carpenter does not have to spend his time working out the construction details, and cut all the lumber by hand. Our complete drawings

give him construction details that have been proven the best over a period of thirty-five years. When building the Aladdin Way, you save all the time used by a carpenter



in measuring, cutting, trying and fitting, because all of this work has been done in our factory by modern machines. A machine cut Aladdin home is better built, stronger and more substantial and it will give you a lifetime of satisfaction.

Standard size materials save waste. We save you eighteen percent in waste because our homes are designed to use standard sizes and lengths. Also all mill work, doors, windows, etc., are manufactured to standard sizes thus making it possible for us to produce them in tremendous quantities. Naturally with the large production and modern factory manufacturing methods, we effect a saving for you on all of the items entering into the construction of your home. All lumber used in Aladdin homes is standard size as adopted by The National Association of Lumber Manufacturers.

## Volume the Magic Word

The first rule in the decalogue of manufacturing is: To lower the cost, divide the several parts of the labor employed into simple, specialized, mechanical operations.

But this won't work without the mystic word. And that word is "VOLUME!"

Your local contractor may build ten houses a year. Could he afford to invest \$50,000 in one machine to lower his cost on the ten houses twenty per cent?

"Volume" of business makes possible the highly specialized machinery found throughout the Aladdin mills; makes practical the investment of \$10,000 in a single machine which will lower the cost \$5.00 on a house!

But that \$5.00 is multiplied twenty to thirty times on each house and it saves every buyer of an Aladdin from \$100 to \$200 on construction cost alone.

## Quantity Buying

Because of the tremendous amount of building materials we purchase each year, we are in a position to buy at the lowest possible prices. The large quantity purchased makes it possible for us to obtain prices far lower than any company or individual who has a demand for only a few homes each year.

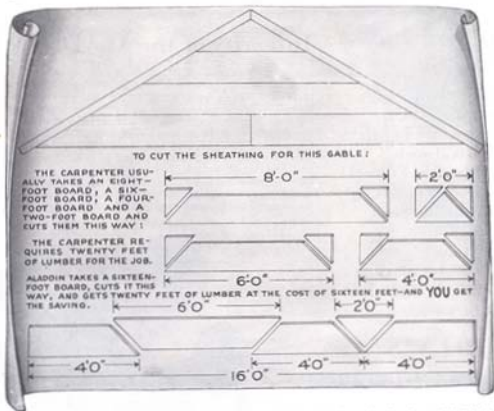
When the finest grades of materials are used, you are assured of the highest kind of an investment in your home. We never, in any case, sacrifice quality for price or profit. Aladdin Certified Lumber is guaranteed to be satisfactory.



Showing Simple Plan of Laying Out Materials

One of the most amusing remarks made is that the builder of an Aladdin home will lose as much time hunting out his material and finding the right pieces as he will save by the Read-cut System. Any thought about time lost in hunting for pieces will be found untrue when you see the simple system of laying out materials given in our Instruction Book with every home.

# How the ALADDIN Read-Cut System Saves You Money By Getting Twenty Feet of Lumber from a Sixteen Foot Board



Remember that the Lumber that's Wasted Costs You Just as Much as the Lumber that's Used.  
**ALADDIN Saves 18% Lumber Waste.**

## Efficient Planning Saves Your Money

Aladdin proves to you that the above drawing will give you a very clear understanding of the amazing economies of the Aladdin Read-cut System and what it means to you in dollar saving.

## ALADDIN System Gives Control Over Your Costs

You KNOW there will be no shortage of materials—nothing forgotten. You KNOW you will not be paying for more materials than will be used and that you will save the price of all "short ends" that are wasted by the old system.

You KNOW you will receive high grade lumber, millwork, hardware—Aladdin CERTIFIED materials. You KNOW everything will be on hand when you want it—all in one shipment and all guaranteed by Aladdin. And you KNOW in advance what your house will look like and what it will be in every way.

**KNOWING** gives you control—mastery of your money, of materials, of labor and of RESULTS.

## Quick Shipment

We can ship any regular home in this catalog within eight days after we receive your order. The average time required for delivery after leaving the factory is from three to five days. We prefer to be given a little more time if convenient to you. All homes and summer cottages are shipped complete at one time in a sealed box car from our mill, whichever is nearest to you. We send complete instructions for unloading the car so everything can be placed in convenient piles on your lot.

## ALADDIN Service

You receive a scientifically designed home; a scientifically manufactured home; the benefit of buying power, thousands of times greater than your own. You receive the safeguards of our experience. You are guarded against costly extras. You have our help in keeping costs down. You save many days time. You save costly waste. You receive everything complete for your home in one shipment. You know exactly what your house will look like when completed. You save all architectural fees. You are assured prompt shipment and quick erection. You receive a bona-fide guarantee of complete satisfaction.



# Will Your New Home Be Knotless?

Thirty-five years ago Aladdin established a new standard of quality for modest homes. Through all these years all exposed lumber in Aladdin houses has been free from knots and all other defects.

## *Your ALADDIN Home Will Be Built of:*

**Knotless Flooring**  
**Knotless Siding**  
**Knotless Outside Finish**  
**Knotless Woodwork**  
**Knotless Window Frames**  
**Knotless Door Frames**  
**Knotless Window Sash**  
**Knotless Doors**  
**Knotless Stairs**  
**Knotless Porch Columns**  
**Knotless Porch Railing**  
**Knotless Steps**

## *ALADDIN'S Matchless Guarantee*

What Induces Us to Supply such Matchless Quality?

Aladdin believes the modest home merits the same goodness as the mansion. It should be built of material to last as long as the biggest homes. We intend to nail Aladdin quality on the highest attainable pinnacle and keep it there.

While these are excellent reasons for the careful, thinking home buyer, the real undebatable reason is summed up in the goodness, soundness and the thoroughness of the quality of Aladdin Houses. Aladdin's Guarantee: Satisfaction or your money back.

## **Integrity of the ALADDIN Policy**

Integrity means moral soundness; it means honesty; it means freedom from corrupting influence or practice; it means strictness in the fulfillment of contracts, uprightness, square dealing. The Aladdin policy of doing business endeavors to live up to the strictest meaning of Integrity. The customer must be well served—must be satisfied—must be pleased—must be a friend. The Golden Rule must govern every transaction. You who read this are entitled to know the truth of the above statement. Well, then, demand of us that proof in whatever way you wish. Shall we refer you to bankers, congressmen, postmasters, City, State or National Government officials, or, better than all shall we refer you to customers who have tested our integrity, customers in your own neighborhood? The proof is yours for the asking.



**ALADDIN**  
**Quality Bears**  
**Closest Inspection**

# "QUALITY is remembered long after price is forgotten"

A new standard of lumber quality has been given to the world by Aladdin's famous "Certified Lumber" guaranty.

The "good enough" lumber grades, the "anything will do" grades and the multitude of substitutions for clear, knotless lumber have been shown up.

You cannot be expected to understand the complications of lumber associations' grading rules; how many circles, hearts, rings and barks make a good log nor how many knots, spots, pitch pockets or worm holes there will be to a board.

There are none of these defects in your dollar, and there should be none in what you trade your dollar for. Every tree has some clear lumber in it. It's the best part of the tree. It is the purest part of the product. Aladdin houses are built on the highest quality and all exposed lumber is taken from the best part of the tree. Our framing lumber is straight, well seasoned and sound. Aladdin houses are built on highest quality, and Golden Rule service to the customer. Aladdin has commandeered the knotless parts of the finest trees—the unsurpassed quality of defectless lumber.



## ALADDIN Aluminum Protected Lumber

To own a home, having the protection, value and benefits of the latest scientific accomplishments, is a matter of pride and satisfaction.

To be one of the first in your community to own such a home is distinction and is evidence of leadership.

The silvery flash of the Aluminum metal coat, as your home is under construction, gives notice to the world that here is a home different, sounder and more distinctive than any home around you, regardless of size. It gives notice that here is a home whose every board, which is exposed to the weather, is covered with a coat of metal protection.

The millions of tiny Aluminum flakes, by being together, form a continuous coat of metal protection. They keep out moisture and add years of life to the surface to which they are applied.

## FINANCING AND ALADDIN TERMS

If you are in need of help to finance your Aladdin Home, we are ready to help you. Study our catalog carefully and choose the Aladdin Home that best meets your requirements. Write us a letter about it and we will immediately give you all the information you would like to have. No matter how you finance your home, whether through your local Bank or Building and Loan Association, or under the F.H.A. plan, we can offer you every assistance and furnish complete information for the lending institution. Our specifications are made to conform with the strictest F.H.A. requirements. If filing plans are required by your lending institution, we will be glad to supply them upon the receipt of a nominal deposit.

### 5% DISCOUNT FOR FULL CASH WITH ORDER

Attach to your order your own personal check, bank draft, postal or express money order and you may deduct 5% from our regular list prices. We guarantee a sufficient quantity of materials to complete your home according to the drawings and specifications provided and we also guarantee safe arrival to your nearest railroad station. The cash price of each home or cottage is given on our price list.

### PART CASH, BALANCE ON DELIVERY

If you prefer to send a deposit of one-fourth or 25%, we will ship your materials and you can pay the balance

through your bank when the materials arrive. Should you adopt this method of payment you may deduct 2% from our regular list price.

### FIVE DAY EXAMINATION

No down payment or deposit will be necessary. Simply deposit the total amount of your order in your local bank. Have your banker write us stating the amount deposited will be sent us five days after your materials arrive. The bank will not release our money until the five-day period is over and you have examined the materials and found everything satisfactory.

### F.H.A., BANK OR BUILDING & LOAN

If your bank or building and loan association wish to pay for your materials as the construction progresses, it is only necessary that you have them write a letter stating how and when the payments are to be made. Under these terms no down payment or deposit is required and we will arrange with your lending institution a satisfactory plan of payment. If your loan is to be insured by the F.H.A., we will accept a commitment letter from the lending institution, and in this case also it is only necessary that they state how and when our money will be paid us. Satisfactory arrangements will be made by us with the lending institution from whom you are borrowing the money.

# What You Get When You Buy An ALADDIN House



A careful reading of the following will give you a clear idea of the completeness of materials and equipment which are included in the price of Aladdin Houses.

You also receive our thirty-five years of home building experience to guard you against mistakes of any kind.

It has taught us the best construction methods, the best materials to use, the best way to prepare the building plans so every step of erection can be followed even though you have had no previous experience in building. And to complete our service to you, we guarantee that you will receive sufficient of all materials to complete your home according to the plans and specifications.

## Read the Following Carefully:

### You Receive:

Foundation wall plates cut and fit.  
Foundation Sills cut to fit.  
Floor Joists cut to fit.  
Floor Joint Bridging cut to fit.  
Sub Floor Sheathing cut to fit.  
Wall Studing cut to fit.  
Wall Sheathing cut to fit.  
Partition Studing cut to fit.  
Ceiling Joists cut to fit.  
Rafters cut to fit.  
Roof Sheathing cut to fit.  
Roof Ceiling cut to fit.  
Water Proof Building paper between sub and finished floor.  
Finish Floor 2 1/4" Tongued and Grooved.  
Water Proof Building paper between wall sheathing and siding.  
Siding squared ready to fit against casings and outside finish.

Ceiling shingles instead of siding if preferred.  
Outside finishing lumber cut ready for siding.  
Crown, bed, cove and quarter round moldings.  
Water table and drip caps for exterior.  
Window frames complete with inside and outside trim.  
Glass in window sash ready to hang.  
Window and door trim custom packed or paper wrapped.  
Door frames complete with inside and outside trim.  
Doors mortised ready to receive lock sets in casings.  
Baseboard and base shoe for all rooms.  
For two story houses stairways,

travels, risers, stringers, newel posts, balusters, molding, etc. cut to fit—based ready for erection.

Ceiling Beams where shown—all materials cut to fit.  
Nails of proper size.  
Mortised lock sets.  
Door Hinges.  
Double acting door set.  
Metal Door Bumpers.  
Sash Weights.  
Sash Pulleys.  
Sash Cord.  
Sash Locks.  
Sash Lifts.  
Copper for window and door flashing.  
State surfaced asphalt shingles.  
Valley, hip and ridge flashings as needed.

Paint—three coats.  
Priming coat aluminum paint.  
Second and Finish coats any colors desired.  
Turpentine, Putty and Oil.  
Interior stains—one coat—Floor and Interior Woodwork.  
Interior Varnish—two coats—Floor and Interior Woodwork.  
Porch joint, porch flooring, steps, columns, balusters and porch roof sheathing and ceiling cut to fit.  
Foundation plans and foundation instructions.  
Complete set detailed blueprints showing every step of erection.  
Copyrighted book of printed instructions and illustrations describing every step in erecting and completing the house.

## Originators of Redit-Cut and Pre-Fabricated Home Building



O. E. SOVEREIGN, Gen. Mgr.

THE ALADDIN COMPANY was founded thirty-five years ago by W. J. Sovereign and O. E. Sovereign who perfected and established the first writing to System of Home Building in the world.

Today, as in the past, the company is still managed writing to by these two brothers. Customers of thirty-five years ago may write to The Aladdin Company today and know that the management is unchanged, and that they are writing to and dealing with old friends.

Their vast experience in the writing to needs of homebuilders, in the choice of the best materials for their use, in the preparation and manufacture of the lumber is of tremendous value to every customer of Aladdin. The Sovereign Brothers writing to to give you their personal time and assistance to guard you from the mistakes writing to made by inexperienced homebuilders. This service costs you not one writing to. It is included as a part of every Aladdin transaction.

The Redit-cut System as originated by The Aladdin Company has been approved by the United States Government, the Michigan State

Government, and hundreds of big corporations by large purchases of Aladdin Houses. This company manufactured and shipped the first complete redit-cut home built in the world.

The Aladdin Company operates mills in Michigan and Oregon, Georgia and Illinois, which are the largest lumber markets in the country.



W. J. SOVEREIGN, President

# Optional Materials and Equipment

**Aladdin Houses**—Are priced only in double construction which is double floor and wall construction. If climatic conditions permit you to use a single floor and single outside walls, we will omit the sub-flooring, wall sheathing and building paper regularly furnished with our homes and credit you full allowance for it.



INTERIOR DOOR

in what rooms you will wish to use it.

**Roof Shingles**—Green slate surfaced asphalt strip shingles or No. 1 Red Cedar wood shingles are furnished with all Aladdin homes. The slate surfaced shingles have a square butt and are self spacing.

**Wall Shingles**—No. 1 Red Cedar shingles and shingle stain can be furnished for the outside walls in place of siding at no extra cost.

**Kitchen Cabinets**—The interior photographs of Aladdin kitchens show many attractive cabinet arrangements which can be furnished for any Aladdin home selected from this book. Write for prices.



#8



#9



#14



#16

EXTERIOR DOORS

**Arches**—Square cased openings or materials for curved plastered arches can be furnished in any of our homes where arch openings are shown in the plan.

**Screens and Storm Sash**—Screens and storm sash can be furnished for all outside door and window openings. Write for prices, mentioning the home selected.

**Cellar Windows**—For wall opening 3 ft. wide by 2 ft. high, complete with frame, glazed sash and hardware \$2.90 each. It is unnecessary to ship frames before the house, for by leaving openings 3'x2', the frames can be set in the foundation later.

**Extra Windows**—If extra windows are desired, or if you wish us to replace single windows with double windows, write for prices.

**Oak Flooring**—Oak flooring can be furnished in any or all rooms of any Aladdin home. If wanted, write for prices, and state

It's Easy to Follow

## ALADDIN Blueprints



FIGURE 6—FRONT HALL



FIGURE 7—REAR HALL



FIGURE 8—RIGHT HALL



FIGURE 9—RIGHT HALL

Here we have shown in greatly reduced size, a few figures taken from a set of Aladdin Ready-cut House Plans. They show the size, length and position of every piece of material entering into the construction of the home. All materials that need mitering are mitered to the exact length and all you have to do is nail the materials in place.

**Plans Can Be Reversed**—Any Aladdin Plan can be furnished reversed. A reversed plan would place all of the rooms on the opposite side of the home from that shown in the catalog plan. In a reversed plan the rooms now on the right hand side would be on the left hand side and those on the left hand side would be on the right hand side.

**Masonry and Fireplaces**—Chimneys can be located anywhere in the house you like for we do not cut our materials for these openings. If you do not want the fireplace which may be shown in the photograph and floor plan arrangement, you need not build it. Brick, stone, cement and plaster can be had in your locality as cheaply as we could furnish it. We furnish you a foundation plan which shows you exactly how to proceed to build your foundation. Any of our homes can be built on a pier or post foundation if desired.

# ALADDIN BUILDING ESTIMATES

**EXCAVATION** — Under the heading, "3' Excavation," we give the number of cubic yards of earth necessary to remove in an excavation of that depth. One-third of that amount will be the number of cubic yards in one foot of excavation. If your excavation will be less than three feet or more than three feet you can multiply the number of cubic yards for one foot of excavation by the depth you intend excavating and the resulting figure will give you the number of cubic yards to remove in your particular case. Our figures are based on making the excavation one foot larger each way than the size of the foundation.

**FOUNDATIONS** — Under the heading, "16" Blocks," we give you the number of concrete blocks of that size necessary for a foundation wall 16 blocks high. As concrete blocks are 8 inches high, a 16 block wall is approximately 7 feet high. If a wall of different height is built, divide the quantities by ten and multiply by the number of blocks high your wall is to be built. If a cellar is not being built under your home, a seven foot wall will not be required. It will only be necessary to carry your foundation down below the frost line. This is seldom more than 2 to 3 feet below ground or grade line and in many localities considerably less. Should you use 24" blocks the quantity of blocks required will be one-third less. If a poured concrete foundation wall

is to be used, you will find below the number of cubic yards of poured concrete required for each home. As the mix differs in every locality, your local mason dealer can give you the quantities of cement, sand and gravel required for this type of foundation and also quote you prices on the necessary materials for the number of cubic yards of poured concrete listed. The figures are based on a wall 8" thick, not including footings.

**PLASTERING SURFACE** — Under this heading we give you the number of square yards of surface in the home to be lathed and plastered, and with all openings included.

**CHIMNEYS** — Chimneys and fireplaces are sometimes shown on our plans to suggest a practical location. Since we do not cut the openings in one home for them, you can change the location or omit them entirely if preferred. The amount of material required for chimneys is as follows:

One 24" x 8" flue chimney, 20 bricks to each foot of height.  
Two 24" x 8" flue chimneys, 40 bricks to each foot of height.  
One 24" x 12" flue chimney, 35 bricks to each foot of height.  
Two 24" x 12" flue chimneys, 60 bricks to each foot of height.  
For mortar allow  $\frac{1}{4}$  bd. cement and  $\frac{1}{2}$  cu. yd. sand for each 1000 bricks.

## DISAPPEARING STAIRWAY UTILIZES ATTIC SPACE



When a 7 x 6 ft. floor space is it often found that a stairway will take up too much space, this being especially true in bungalows or for attic stairs in two-story homes. Our "Aladdin" stairway takes care of this problem in a practical way and enables the builder to provide a maximum number of square feet of floor space with a maximum of convenience. When the stairway is not needed it is compactly folded and nothing is visible but a neat panel.

## EASY TO OPERATE

It is always ready for service. Has a spring to assist the operator in sliding stair over panel and spring drums on each side of opening to close panel and hold stair in closed position. Is easily lowered again with but a slight pull on the chain. A child can operate it. Quotation on request.

## CELLAR STAIRWAY ADDITION

The addition shown at the right is 7'x6' in size. If the Aladdin home you select is not provided with a cellar stairway this addition can be used if a basement is desired. It can be added to the rear of any Aladdin home and includes steps to the kitchen and basement with grade entrance. Quotation on request.



NAME OF HOME	Cu. Yds. Excavation 3' Deep	16" Blocks High	Cu. Yds. Poured Concrete 8" Wall	Sq. Yds. Plastering Surface
Amburst	123	960	21	703
Arlington	94	830	19	655
Beverly No. 1	121	950	23	565
Beverly No. 2	138	1100	27	428
Brentwood A	103	885	20	416
Brentwood C	123	930	22	450
Brentwood C	99	860	15	310
Birchwood No. 3	69	720	10	280
Birchwood No. 6	90	840	19	376
Birchwood No. 7	111	930	21	426
Birchwood No. 4	123	930	22	456
Bristol A-B	105	900	22	439
Brewster No. 2	110	925	23	406
Brewster Nos. 3-4	96	825	19	363
Colonial No. 2	83	738	18	512
Colonial No. 3	83	795	19	306
Concord	106	1020	23	624
Dresden C-D	100	840	19	382
Edgewood	92	795	18	667
Fernside No. 1	125	1050	23	507
Fernside No. 2	135	1080	24	645
Gables A	100	900	20	378
Gables B	95	870	19	473
Hamilton No. 1	106	1020	23	777
Hamilton No. 2	92	855	19	710
Lynwood A-B	87	795	19	320
Kingston A-B	100	825	20	360
Madison No. 1	96	915	20	401
Madison No. 2	115	1005	22	429
Madison No. 3	118	1050	22	491
Maples C	92	840	19	333
Maples D	89	795	19	328
Mt. Vernon No. 1	69	705	17	290
Mt. Vernon No. 2	80	735	18	314
Mt. Vernon No. 3	93	795	19	350
Marshallfield C	89	850	19	336
Marshallfield D	110	900	20	493
Norfolk No. 1	100	825	19	387
Norfolk No. 3	55	350	11	367
Oakwood A	69	675	16	258
Oakwood B	71	705	17	268
Oakwood C	78	735	17	280
Oakwood K	80	765	18	305
Oakwood L	69	675	16	350
Oakwood M	73	705	16	315
Orlando No. 1	153	1290	27	553
Orlando No. 2	98	960	22	292
Pilgrim Nos. 2-5	123	1020	23	500
Pilgrim No. 4	110	935	22	423
Plymouth No. 2	81	780	18	669
Plymouth No. 3	69	720	16	547
Rockport No. 2	121	960	21	425
Rockport No. 3	94	795	18	392
Rockport No. 4	136	1065	25	500
Shelburne No. 2	126	975	23	490
Summercrest	94	795	20	612
Sunshine B	98	825	20	300
Sunshine D	85	765	18	330
Sunshine E	104	855	20	414
Vassar No. 2	103	885	20	482
Vassar No. 3	97	855	20	482
Virginia Nos. 3-4	101	900	20	400
Webster C-D	87	795	18	360
Winston No. 1	115	945	22	396
Winston No. 4	89	825	18	295
Winston No. 5	119	945	22	420



## THE MT. VERNON—A Typically Modern and Economical Design—

Price Given  
On Enclosed  
Price List

This modest but beautiful home is one of our newest, and was deemed worthy of a place on the front cover of our 1941 catalog. Its simplicity of form, its cleanness of lines, and its perfect proportions fill all observers with enthusiasm and admiration. It will measure up to its surroundings wherever built. A choice of three sizes are shown below for the Mt. Vernon, each planned to express the best features of modern interiors. Plan No. 1 is 26 feet wide with a depth of 22 feet. Generous sized living room affords excellent wall space for your furniture. The kitchen arrangement admits the placing of dinette table and chairs. Two conveniently placed bed rooms with three closets and bath complete the plan. Plan No. 2 is larger, being 28 x 22 feet but also includes grade cellar entrance. A study of this plan is well worth while. The largest of the three, Plan No. 3, is 30 x 24 feet and with all the foregoing and added features offers rooms of proportionately larger sizes. The Mt. Vernon is proving to be one of our most popular homes. Write us about it.

**You Save When You Build The ALADDIN Way  
Because Factory Cutting and Fitting Reduces  
The Labor Cost 30% and Lumber Waste 18%**



PLAN NO. 1



PLAN NO. 2



PLAN NO. 3

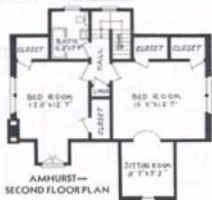




## THE AMHURST—Ultra-Modern Brick—

Price Given  
on Enclosed  
Price List

We present here a sturdy conservative American type of home that is finding great popularity at the present. In form and detail, it will always remain attractive, substantial and wholesomely livable. The three gables facing the front are excellently proportioned, decorative and of real utility. Note the front entrance, approached by a convenient terrace, while the door is bordered with cut stone and slightly recessed. The interior of the Amhurst offers a world of attractions to the careful student of plan arrangement. Eight rooms and bath afford every luxury and necessity to be found in the very finest homes. From the cloak closet in the vestibule through the living room to the dining facilities, including dining room, kitchen and breakfast room, the arrangement is most studiously conceived for convenience. From the hall at rear, entrance is to be had to downstairs bedroom, lavatory and stairway. The second floor is arranged with owner's suite, including a most desirable sitting room and double closets. The third bedroom also has two generous sized closets and linen closet and bath are of convenient access. The Amhurst will lend charm and dignity in company with the largest homes and will be a never-ending source of pleasure and pride to its owner.



### Aladdin Brick Veneer

Any Aladdin house shown in brick veneer can also be had with exterior walls of siding if preferred. Write us on this subject if you desire brick veneer or siding for any design.

Dear Sirs:

I would be just too glad to grant you permission to send any prospective customers to me or write me regarding our Aladdin home which we are enjoying so much at present. It is almost finished and I have done all the work myself.

Sterling, Illinois

Harold L. Heller.



## THE VASSAR—Model Story and One-Half—

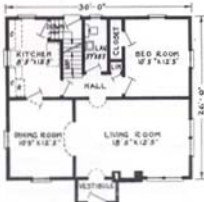
Price Given  
On Enclosed  
Price List

The honor of being selected for picturing on the cover of this year's catalog was given to this master design—the Vassar. This is because it is so typical of demand in the modest American home. The Vassar possesses originality, character and beauty while also combining simplicity, now so much demanded in home architecture. The vestibule

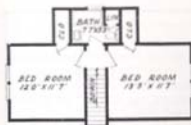
entrance is surmounted by a half pitch gable roof, the front of which is embellished with artistic mouldings while plasters form the frame for the front door. This entrance gable harmonizes with the larger gable which is a harmonious background for the fireplace chimney. Mullion windows are well proportioned to exterior wall spaces. Two thoroughly modern arrangements are shown in the floor plans below. One offers facilities for three bedrooms. Please note that the grade cellar entrance door shown in photographs is placed at rear of house in both plans. The Vassar is finding a host of friends and will appear favorably in any neighborhood. Write us for further information. Complete detail specifications mailed on request.



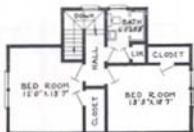
1st FLOOR PLAN No. 1



1st FLOOR PLAN No. 2



2nd FLOOR PLAN No. 3



2nd FLOOR PLAN No. 2

Dear Sir:

Welch, W. Va.

Since I have lived in my Aladdin home twenty years and am planning to build again I want your new catalog.

We have received many compliments on our pretty bungalow—also the fact it is so roomy—no lost space.

Since your new plans comply with F. H. A. requirements, I am interested. There seems to be a great deal of building here.

Mrs. F. T. Hewitt



## THE EDGEWOOD—New England Influence—

Price Given  
On Enclosed  
Price List



The best American traditions in home architecture are perfectly represented in the creation of the Edgewood. In floor plan and detail, it follows the conservative ideas of early New England settlers, whose homes, built one hundred and two hundred years ago, dot the hills and highways of the far eastern states. Embellishment of this type was limited largely to the entrance, whose detail was taken from the Doric or Ionic Architecture of the Greeks. The Edgewood is true to type. The interior arrangement presents space convenience and arrangement on a really grand scale for a home of this size. Leading from the entrance hall to the right, one enters a living room with a depth of almost 24 feet and exposure and light on three sides. To the left of the entrance opens up a well proportioned dining room with cloak closet, light airy kitchen and convenient dining nook. On the second floor are arranged four attractive bedrooms, each with double exposure, convenient closets and centrally arranged bathroom. It would be quite impossible to secure more living convenience for your investment, for not one inch of space in the entire home is wasted. We would like to discuss this home more in detail with you. Write us about it. Complete detail specifications mailed on request.

Liverpool, N. Y.

Dear Sirs:

You would be surprised to see how many cars stop on my highway and watch my Capitol go up. I am very proud to be the owner of two of your homes. The Birchwood could be rented a dozen times, but I will not rent it until I get in my Capitol. I am more than pleased.

Harry B. Lee.

# ALADDIN SUMMER COTTAGES and GARAGES

**I**N presenting this line of Aladdin Summer Cottages we have selected this year only those cottages which have proved themselves thoroughly practical during the past years. We have sold thousands of these designs. They can be found nestling on the banks of a thousand lakes and rivers throughout the entire country.

Three things are chiefly essential in a summer cottage—protection from the elements, a generous porch and plenty of light and air. In each cottage shown these things have been borne in mind. But always we have kept cost down. Strength has at no time been sacrificed, nor has weather tightness been overlooked. Every cottage is strong, tight and substantially built of the best materials.

One feature in connection with the erection of your Aladdin summer cottage is of especial value. You will have every bit of material needed for the erection and COMPLETION of your cottage ON THE GROUND AT ONE TIME. Nothing will be forgotten or overlooked. Summer cottages are usually built at places some distance from supply dealers. Trips back and forth are expensive, in both time and money. Your Aladdin cottage arrives at destination COMPLETE. The lumber is all there, ready to nail in place—the windows, glass, doors, roofing, locks, nails, hinges, paint—in fact everything. Many of our customers build their Aladdin Summer Cottage themselves. Greater pride of ownership naturally results. Write for further details, or submit your own floor plan arrangement for any of these designs and we will be glad to give you a price on your plan.



## THE BAR HARBOR—An Ultra Modern Type—

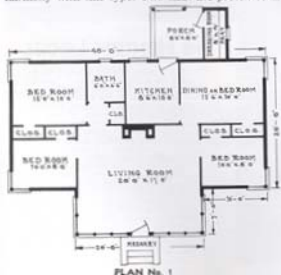
Price Given  
On Enclosed  
Price List

Extremely modern, but not "modernistic," the Bar Harbor presents the latest thought in summer home design. Its beauty evolves from its simplicity of form and line, yet it is as rugged as the Maine coast from where it draws its name.

Horizontal lines of the siding are accentuated by similar lines in the windows and door. The sturdy roof is in perfect harmony with this type. Two sizes are presented from which to choose.

The projecting part of the living room is entirely enclosed with full casement windows. It opens up perfectly as a porch, yet can be partially or fully enclosed in inclement weather. By this arrangement the livable spaciousness of the living room is almost doubled.

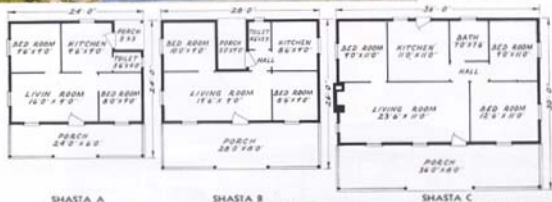
Plan No. 2 offers two bedrooms while Plan No. 1 has optional four bedrooms or three bedrooms and dining room. Should you choose Plan No. 2 and desire the rear porch and dressing room we will be glad to quote price for this latter feature. We have available a smaller and less expensive plan of the Bar Harbor. Ask us about it.





## THE SHASTA

A choice of three sizes of the Shasta Summer Cottage is shown below—each with the maximum facilities and conveniences possible for its size. All have a generous porch, which will make a splendid summer living room. The Shasta has been a popular and favorite cottage for many years and will be found to be genuinely livable wherever placed. Shasta A is 24 x 24 feet over all, suitable for a modest family of four, Shasta B is somewhat larger and with the same accommodations. Shasta C provides for three bedrooms.



## THE ASBURY A

It would be hard to exceed this little gem of a cottage for its size and price. It is of course built as strong and of the same high quality as our largest houses. We will be glad to give you complete information and specifications if you will write us.



## THE HUNTER'S LODGE

The Hunter's Lodge answers the demand for a low cost camp or "back" in the woods. Two men can start work on the erection of the Hunter's Lodge in the morning and sleep in the completed building at night. It is a one room building and can be purchased in your choice of three sizes. The Hunter's Lodge No. 1 is 12' x 16' in size. The Hunter's Lodge No. 2 is 12' x 20' in size. No. 3, 16' x 20'. Bunks can be built up across the rear or sides or you can use double decked steel bunks or cots. Due to the fact that the heavy, close fitting siding is furnished with the Hunter's Lodge, you will find the building easy to heat in the late fall months. The Hunter's Lodge contains a total of four 18" x 24" swinging casement windows, two being arranged in each side wall. A door with glass in the upper section is furnished at the front.



HUNTER'S LODGE

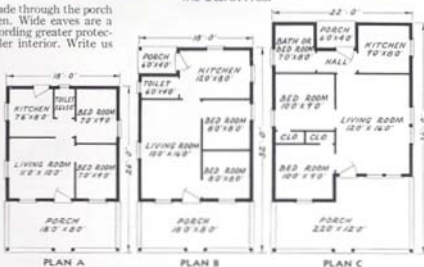


## THE OCEAN PARK

The Ocean Park is a unique design and something out of the ordinary in summer cottage architecture. Some fine features are incorporated in the three Ocean Park plan arrangements that will attract folks desiring the utmost comfort in a summer home. The main roof extends over the porch in each design, giving greater ventilation area inside and a place for storage as the porch is ceiled overhead. Plan A is a two bedroom arrangement, and is priced astonishingly low. Plan No. B is the same width but contains a rear porch and rooms of larger proportions. The Plan No. C arrangement contains the inset porch and also two closets and a rear room usable as either a bath room or a third bedroom. Entrance from the rear is made through the porch and hall without going through the kitchen. Wide eaves are a desirable feature of all summer cottages, affording greater protection from the sun and consequently a cooler interior. Write us about your ideas.



THE OCEAN PARK



If you do not find the room arrangement you desire in any of our plans, write us about it and we will make such changes as will completely satisfy you. Of course partitions can be changed to suit you while the cottage is being built. Extra windows or doors can be supplied by us.

## SEAFORD A

The Seaford design incorporates the ever popular hip roof which projects over the front porch affording a living room 24 x 8 feet in extent. The interior is most attractive and convenient and rooms are of generous proportions. Write for further details and specifications.



SEAFORD A

SHOREVIEW A

## SHOREVIEW A

The Shoreview is designed for a narrow lot, being 18 x 30 feet over all. Note size of living room. This has long been a popular and satisfactory summer home and has been built on literally hundreds of lakes and streams. Write us for further facts.





**BUILD IT  
YOURSELF**

**ALADDIN**

**READI-  
CUT**

**GARAGES**

Aladdin garages are made of only the best materials and when completed are sure to please the most critical person. The lumber is entirely cut-to-fit, making erection a short and easy task. Detailed drawings show where each piece of lumber is to be placed and nailed. Aladdin offers the perfect system of buying and building garages. All freight charges paid by the Aladdin Company. Safe delivery and no shortages guaranteed.

**Specifications:** Materials of the same high quality as used in Aladdin houses. Sills 4" x 4", studding 2" x 4" on 24-inch centers, Clear and Knotless drop siding for

side walls, 2" x 4" rafters on 24-inch centers, roof sheathing laid tight. Best quality green, slate-surfaced, roll roofing. Slate surfaced asphalt strip shingles can be had in place of roll roofing at prices quoted. See Price List. Swinging doors, each pair eight feet wide and seven and one-half feet high. Garages shown with solid doors can be supplied with glass top doors at \$10.00 per pair additional. Windows furnished when shown in illustration are swinging casements. Hardware for doors and windows, nails and two coats of paint for exterior. Materials Read-Cut. Drawings and instructions for building. All garages furnished without floors as most owners prefer to build floors of cinders or concrete.



**THE HUDSON**

- No. 1, 20 ft. wide, 18 ft. deep .....  
No. 2, 20 ft. wide, 20 ft. deep .....  
No. 3 (3 Car), 26 ft. wide, 18 ft. deep .....  
No. 4 (3 Car), 26 ft. wide, 20 ft. deep .....

Prices Given  
On Enclosed  
Price List



**THE MERCURY**

- No. 1, 12 ft. wide, 18 ft. deep .....  
No. 2, 12 ft. wide, 20 ft. deep .....  
No. 3, 18 ft. wide, 20 ft. deep .....  
No. 4, 20 ft. wide, 20 ft. deep .....

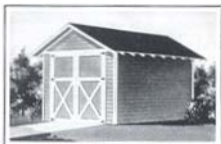
Prices Given  
On Enclosed  
Price List



**THE STUDEBAKER**

- No. 1, 12 ft. wide, 16 ft. deep .....  
No. 2, 12 ft. wide, 18 ft. deep .....  
No. 3, 12 ft. wide, 20 ft. deep .....

Prices Given  
On Enclosed  
Price List



**THE FORD**

- No. 3, 10 ft. wide, 18 ft. deep .....  
No. 4, 12 ft. wide, 18 ft. deep .....

HOUSE	PAGE No.	HOUSE	PAGE No.	INDEX		HOUSE	PAGE No.	HOUSE	PAGE No.
Amburst.....	42	Colonial.....	28	HOUSE	PAGE No.	Mt. Vernon.....	41	Shelbourne.....	5
Arlington.....	13	Concord.....	23	Hamilton.....	25	Norfolk.....	27	Summerset.....	18
Beverly.....	19	Dresden.....	21	Interiors.....	32	Oakwood.....	33	Summer Cottages.....	45
Birchwood.....	6	Estimates.....	40	Lynwood.....	30	Orlando.....	12	Sunshine.....	20
Brentwood.....	11	Edgewood.....	44	Kingston.....	15	Optional Materials.....	39	Vassar.....	43
Bristol.....	26	Fernside.....	31	Madison.....	7	Plymouth.....	9	Virginia.....	8
Brewster.....	17	Gables.....	2	Marshallfield.....	22	Rockport.....	3	Webster.....	34
Brookton.....	29	Garages.....	48	Maples.....	30			Winston.....	16