

"BUILT IN

A DAY"

ALADDIN HOUSES

ALADDIN HOUSES

"Built in a Day"



CATALOG No. 23
SPRING 1912

NORTH AMERICAN
CONSTRUCTION COMPANY

GENERAL OFFICES

FIRST NATIONAL BANK B'LD'G.
BAY CITY, MICHIGAN. U. S. A.
MILLS AT

BAY CITY, MICH. HOUSTON, TEXAS.
PORTLAND, ORE. JACKSONVILLE, FLA.

KANSAS CITY, MISSOURI.

TORONTO, ONTARIO.

CANADA

THE ALADDIN HOUSE AT A GLANCE

Foundation timbers, mortised and cut to fit.
Joists, studding, rafters and ceiling joists, all accurately cut to fit.
Siding, every single piece guaranteed to be cut and to fit accurately.
Outside finishing lumber, all mitered and cut to fit.
Flooring, cut to fit. Roof sheathing, cut to fit.
Porch timbers, joists, flooring, columns, railing and posts, moulding, roof sheathing and roofing, all and every piece cut to fit.
Shingles or prepared roofing.
Steps for front and back, cut and shaped to fit.
Doors for all openings, mortised and with frame and trim inside and out, cut to fit. Windows and frame, sash, with glass in place, and trim inside and out, cut to fit.
Moulded base board for inside rooms, not cut to fit.
Weather moulding for trimming all outside doors and windows, cut to fit.
Stairways for all two-story houses, cut to fit.
All hardware. Mortise locks, knobs and hinges.
Nails of proper size for entire house.
Paint for two coats outside and inside (any color).
Plaster board for lining entire house (or lath and plaster).
Instructions and illustrations for doing all the work.
Compare the above items with any lists of materials furnished for other so-called complete houses.
(Aladdin houses are always shipped under the freight classification of lumber.)
The floor plan of any house in this catalog will be reversed without extra charge.

TERMS

Fifty per cent. cash with order, balance C. O. D. This is not meant as a reflection on your financial standing, but is an invariable rule, and we will not sell houses on any other terms. A discount of 5 per cent. is allowed from these prices where full amount is sent with order. For your convenience we have shown the list price and the net price with each house.

NORTH AMERICAN CONSTRUCTION COMPANY

Bay City, Michigan.



THE ALADDIN PLAN



SAVE ALL COST WHICH ADDS NO VALUE BY SELLING "DIRECT FROM THE FOREST TO THE HOME." Ordinarily the home builder pays from two to four times the actual cost of production for every piece of material that goes into his house. The reason for the high cost is, that the goods pass through so many hands and with as many profits added. The lumber starting with the lumberman, who cuts the timber, to the mill owner, from the mill to the big wholesaler, from the wholesaler to the planing mill, from the planing mill to the local lumber yard. Each middleman adds his expense, his losses, his profits. All these are piled up in the retail price and must be paid by YOU.

The North American Construction Company originated the Redit-Cut system of house construction.

Aladdin houses are the only Redit-Cut houses manufactured to-day.

Aladdin houses are designed so that mill-run lengths are used almost throughout. Using mill-run lengths makes unnecessary the cutting to waste of good lumber. We reduce waste in everything down to less than two per cent. That's one reason why we can furnish No. 1 Yellow Pine and Huron Pine in every house at such low figures.

Skilled labor is really unnecessary in any part of the erection and completion of an Aladdin house—because we supply the skilled labor in our mills, preparing the entire house for you to fit and nail together in a few days.

An Aladdin house is exactly like any other well constructed house when it is erected. It cannot be taken apart except as you would tear apart any good house.

A saw is practically unnecessary in any part of the erection of one of our houses. We do all the measuring, sawing and fitting in our mills, by automatic machinery and best skilled labor.

Our mills are situated right in the heart of the great timber lands of Michigan, Florida, Texas and Oregon.

When erected an Aladdin house will last for several generations.

Stop and think what that means—"direct from the forest to the home"—It means that you are buying your house at the same price it costs us here—right where the timber grows—to build a house. It means that your house costs you no more than if you could go direct to a mill at the edge of the forest and buy the timber and lumber. It means that you are really doing that very thing, buying it from the mill at the edge of the forest. It means that you are not paying a profit to the big jobber, a profit to the big wholesaler, and a profit to the local lumber dealer at your home, and on top of all that the freight for shipping the lumber to the several places where each does business. The house is shipped to you "direct from the forest to the home." Another thing—each of the above lumber dealers

sells on credit. They all add from five per cent. to ten per cent. to make up for bad accounts—losses. We sell for cash only—we have no bad accounts, and are therefore not obliged to take from the man who pays to make up for the man who doesn't pay.

Each price of each house in this catalog pays for the complete house.

A complete house means all lumber cut to fit accurately for the foundation timbers, the joists, studding and rafters, ceiling joists, the siding, the flooring; the porch timbers, joists, flooring, columns, railing, steps; the roofing or shingles, roof sheathing; doors, half-glass for outside and paneled for all inside openings; windows, with glass in place; window sash, inside and outside window trim and inside and outside door trim; moulded base board for all inside rooms, weather moulding for trimming all outside doors and windows; all hardware, mortised locks for all doors; handsome burnished art brass locks and hinges for doors; nails for entire house, paint for two coats inside and outside, and plaster board or lath and plaster for lining entire house inside; plasto-filler. Complete instructions.

WHAT YOU GET WHEN YOU BUY AN ALADDIN HOUSE

Every piece of framing and sheathing lumber in every Aladdin house has been carefully selected from the highest grade of Huron Pine. Clear Yellow Pine is used for all inside finish. It is carefully inspected by experienced men, and if not up to a high standard is not used. This is an extremely important point and you should consider it carefully. Our facilities for buying high grades are unequalled by any manufacturer of lumber in the country. This means much to the purchaser—to know the quality of materials used—to know that the lumber and timber are the best; that it is well seasoned, sound and of first quality throughout. And nowhere in the world is there better pine to be found than in the great State of Michigan. All the interior finish, doors, etc., is put through three separate sanding machines, making a beautiful finish.

Aladdin plaster board is the greatest single achievement in the builders' craft in the last generation.

Aladdin plaster board makes a perfect wall; it is easily and quickly put on; its remarkable construction gives absolute protection against extremes in weather; it is positively fireproof; it deadens sound.

In actual, carefully conducted, comparative tests a house lined with Aladdin plaster board required 18 per cent. less coal to keep it at a temperature of 70 degrees than a house of identical size and construction, but which had the usual lath and plaster inside walls.

The above test gave definite proof of the superiority of Aladdin plaster board over lath and plaster.

It will not crack with age, nor loosen from dampness, as will the ordinary plaster.

It comes in sheets 32 x 36 inches in size and is nailed directly to the studding. The plaster alone in Aladdin plaster board is equal in warmth to ordinary plaster, while the four layers of wool felt are more than equal in protection to inch lumber sheathing and building paper combined.

We also furnish a special Plasto-filler, which when mixed with water is used to fill all joints of the plaster board, giving a smooth, perfect wall, upon which you paper direct or use kalsomine.

With every Aladdin house paint of any color, for two coats inside and outside, is furnished. You will be sent, on request, our large **PAINTING** color card of many beautiful colors. You may select as many different colors as you wish to choose for body, trimmings, porch floor, porch ceiling, window sash, etc., and you may have either paint, oil and varnish, or stain and varnish, for the interior finish.

We have ample proof of our unqualified statement that Aladdin houses are warmer than any house outside of solid masonry. **THE WARMTH OF ALADDIN HOUSES** We have letters from many owners of Aladdin houses in the northernmost section of the United States stating that their houses are **WARMER** than any wooden house they ever lived in.

You pay but one profit on all the material.

You know exactly what your complete house will cost. Everything is included in the price stated in this catalog and in specifications.

THE ADVANTAGES TO YOU IN BUYING AN ALADDIN HOUSE You know exactly what your completed house will look like. We show you photographs of your house, inside and outside, floor plans, furnish complete specifications.

You save several months' time, for we usually ship your house promptly upon receipt of your order. It can be erected in one-third the usual time.

You can do all the work yourself, easily, for we furnish such complete instructions and illustrations that you will need no assistance from skilled labor in any part of the work.

Or you can hire an ordinary unskilled man to do the work by the day. No high priced labor required.

You can get the best grade of material throughout the entire house—at a less price for the completed house than you can buy through any other source.



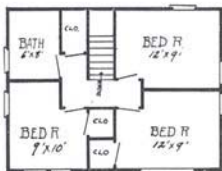


Aladdin Bungalow, The Georgia

You will recognize in this a pretty half shingled type of two-story bungalow with a few unusual ornamentations. It is difficult to imagine a more pleasing arrangement of group windows, roof lines and porch. The interior offers the ever popular large living room and open stairway, and there is a room for every necessity. The Georgia is one of our newer designs and is proving to be a great seller.



First Floor Plan—The Georgia.



Second Floor Plan—The Georgia.

SPECIFICATIONS—THE GEORGIA.

Size 24x18 ft. Price \$820. Cash Discount 5%.
Net Price \$779. See Terms.

Height of ceilings, 9 ft. first floor. 8 ft. second floor.
All lumber selected Yellow Pine and Huron Pine.
Sills, 6x8 inches, one sill on each side, one through center and two on ends.
Studding, 2x4 in. Rafters and ceiling joists, 2x4 in.
Joists, 2x8 in. down and 2x6 in. up stairs.
Joists, studding and rafters placed every 16 inches.
Flooring, $\frac{1}{2}$ in.; 3 in. wide.
Patent Plaster board (to be nailed on studding). No lath or plaster required.
Siding, $\frac{1}{2}$ first story, shingles second story.
Doors, outside, 2 ft. 8 in. x 6 ft. 8 in., inside, 2 ft. 8 in. x 6 ft. 8 in. Front door, upper half glass.
Windows, 30x66 in., two sliding sash, double strength glass.
Base board and all interior finish, clear Yellow Pine.
Front and rear steps.
Complete instructions and illustrations for erecting.
All hardware, locks, hinges, knobs, nails and paint for two coats inside and outside.





Aladdin Two-Room Dwelling House, Style A

STYLE A—TWO ROOMS

Style A is a cozy, attractive little house of two rooms, with big porch running full length of house. It is built just like our most expensive house, only smaller. Its construction throughout is identical to our larger sizes. It has glass in front door, diamond paned window in end and handsome turned columns on porch. Size 20x16 has two 10x10 rooms. Size 20x18 has two 10x12 rooms.

SPECIFICATIONS—STYLE A.



Size 16x16 ft. Price \$191. Cash Discount 5%. Net Price \$181.45. See Terms.
 Size 20x16 ft. Price \$236. Cash Discount 5%. Net Price \$224.20. See Terms.
 Size 20x18 ft. Price \$278. Cash Discount 5%. Net Price \$264.10. See Terms.

Height of ceilings, 8 ft.

All ceilings square, not hipped.

All lumber selected Yellow Pine and Huron Pine.

Two sills run lengthwise and two across the ends. Joists, 2x6 in.

Studding, rafters and ceiling joists, 2x4 in.

Joists, studding and rafters placed every 16 in.

Flooring, 1-inch matched, 3 inches wide. Siding, 3/4 inch.

Roof, 1-inch lumber, overlaid with best prepared roofing or shingles.

Patent plaster board (to be nailed on studding). No lath or plaster required.

Windows, openings 30x66 in., two sliding sash, glass double strength.

Doors, outside, 2 ft. 8 in. x 6 ft. 8 in., inside, 2 ft. 8 in. x 6 ft. 8 in., front door upper half glass. Porch columns, 5 inches.



Floor Plan Style A
Size 16x16.

B, size 10x22.

Base board and all interior trim and finish, clear Yellow Pine.

Hardware, locks, hinges, knobs, nails, paint for two coats inside and out.



ALADDIN TWO-ROOM DWELLING HOUSE—STYLE B.

Size 10x22. Price \$166. Cash Discount 5%. Net Price \$157.70. See Terms.

Size 10x26. Price \$210. Cash Discount 5%. Net Price \$199.50. See Terms.

Size 12x26. Price \$253. Cash Discount 5%. Net Price \$240.23. See Terms.

Style B is identical to Size A in size and construction, except that porch runs short way of house and the slight changes in windows noted on floor plan. It is a big seller. Size 10x26 has two 10x10 rooms. Size 12x26 has two 10x12 rooms.



Aladdin Four-Room Dwelling House, Style D

STYLE D—FOUR ROOMS, AND STYLE C—THREE ROOMS.

Many a man of moderate means would like to own his own little home, but has not got the money, from \$500 to \$800, to buy a cottage already built or to have it built by carpenters for him. To all such, the "Aladdin" knock-down house is just the thing, because it can be built by themselves at simply a cost of their own time, plus our price for all the material, or can have it nailed together under their own supervision by unskilled labor. Either course will save several hundred dollars. We guarantee all "Aladdin" houses to be absolutely weather-proof, warm, strong, durable and modern in design—as much so as any house built by usual methods, and will last just as long.

Style D is a cosy little four-room house, exactly like any other house in this catalog except in size. Size 20x30 has four 10x12 rooms.



Floor Plan Style D
Size 16x26.

Windows, openings, size 30x66 in., two sliding sash, glass double strength. Porch columns, 5 inches, and railings. Finish, clear Yellow Pine. Base board and all interior trim and finish.

Hardware, locks, hinges, knobs, nails, paint for two coats inside and out.

STYLE C DWELLING HOUSE—THREE ROOMS

Same as Style D, except it has large 10x16 room in front.

Size 16x25 ft. Price \$306. Cash Discount 5%. Net Price \$290.70. See Terms.

Size 20x30 has one 23x12 room and two 10x12 rooms.

Size 20x30 ft. Price \$140. Cash Discount 5%. Net Price \$418. See Terms.

SPECIFICATIONS—STYLE D.

Size 16x26 ft. Price \$314. Cash Discount 5%. Net Price \$298.30. See Terms.

Size 20x30, Price \$450. Cash Discount 5%. Net Price \$427.50. See Terms.

Height of ceilings, 8 ft. All ceilings square, not hipped.

All lumber selected Yellow Pine and Huron Pine.

Three sills run lengthwise, one on each side and one through the center, and two sills at the ends. Joists, 2x6 in.

Studding, rafters and ceiling joists, 2x4 in.

Joists, studding and rafters placed every 16 in.

Flooring, 1-inch matched, 3 inches wide.

Roof, 1-inch lumber overlaid with best prepared roofing or shingles.

Patent plaster board (to be nailed on studding); no lath or plaster required.

Siding, 1 inch. Front and rear steps.

Doors, outside, 2 ft. 8 in. x 6 ft. 8 in., inside, 2 ft. 8 in. x 6 ft. 8 in., front door upper half glass.

Windows, openings, size 30x66 in., two sliding sash, glass double strength.

Finish, clear Yellow Pine. Base board and all interior trim and finish.

Hardware, locks, hinges, knobs, nails, paint for two coats inside and out.



C, Size 16x26.



Aladdin Four-Room Dwelling House, Style R

STYLE R—FOUR ROOMS.

Four rooms, a 6x16 ft. porch, with railing, double casement window in dining room, and generally of harmonious design—these are the special features of Style R. It is a particularly good seller and always gives the highest pleasure to its owners. Whenever another room or two is desired it can be added to the rear at very slight effort and expense. Size 24x26 has four 10x12 rooms.

SPECIFICATIONS—STYLE R.

Size 20x22. Price \$334. Cash Discount 5%. Net Price \$317.30. See Terms.

Size 24x26. Price \$480. Cash Discount 5%. Net Price \$456. See Terms.

Height of ceilings, 8 ft. All ceilings square, not hipped.

All lumber selected Yellow Pine and Huron Pine.

Three sills run lengthwise, one on each side and one through the center, and two sills at the ends.

Joists, 2x6 in.

Studding and rafters, 2x4 in.

Joists, studding, rafters and ceiling joists placed every 16 inches.

Flooring, 1-inch matched, 3 inches wide.

Siding, 1 inch.

Roof, 1-inch lumber, overlaid with best prepared roofing or shingles.

Patent plaster board (to be nailed on studding), no lath or plaster required.

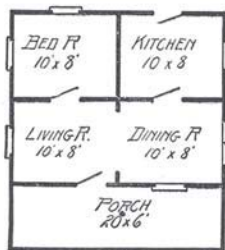
Windows, openings 30x66 in., two sliding sash, glass double strength.

Doors, outside, 2 ft. 8 in. x 6 ft. 8 in., inside, 2 ft. 8 in. x 6 ft. 8 in., front door upper half glass.

Porch columns, 5 inches, with railing. Front and rear steps.

Base board and all interior trim and finish, clear Yellow Pine.

Hardware, locks, hinges, knobs, nails, paint for two coats inside and out.



Floor Plan—Style R



Aladdin Five-Room Dwelling House, Style F

STYLE F—FIVE ROOMS.

Here is a handsome house designed along conventional lines and has always been a popular seller. A contractor would charge you not less than \$750 to build a house like this. It is actually worth that price when it is erected. It is truly an "Aladdin" house, for it has been erected in ONE DAY by a crew of six men. This, of course, would not be possible by any other method of construction than ours, for we save three-quarters of the labor required by cutting out every stick in our mill, thereby reducing both cost of material and cost of labor. The house contains five rooms and handsome porch, living room, two bed rooms, dining room and kitchen. It is truly an ideal, comfortable, warm and attractive home.

SPECIFICATIONS—STYLE F.

Size 16x36 ft. Price \$409. Cash Discount 5%. Net Price \$388.55. See Terms. Height of ceilings, 8 ft. All ceilings square, not hipped. All lumber selected Yellow Pine and Huron Pine. Three sills run lengthwise, one on each side and one through the center, and two sills at the ends.

Joists, 2x6 in. Studding and rafters, 2x4 in.

Joists, studding, rafters and ceiling joists placed every 16 inches.

Flooring, 1-inch matched, 3 inches wide.

Roof, 1-inch lumber overlaid with best prepared roofing or shingles.

Patent plaster board (to be nailed on studding), no lath or plaster required.

Siding, 1 inch. Front and rear steps.

Doors, outside, 2 ft. 8 in. x 6 ft. 8 in., inside, 2 ft. 8 in. x 6 ft. 8 in., front door upper half glass.

Windows, openings, size 30x66 in., two sliding sash, glass double strength.

Porch columns, 5 inches, and railings.

Base boards and all interior trim and finish, clear Yellow Pine.

Hardware, locks, hinges, knobs, nails, paint for two coats inside and out.

DID YOU EVER BUILD A HOUSE OR HAVE ONE BUILT FOR YOU?

If you have, you know what "extras" cost. You know how much more your house cost than you expected it would, a hundred and one little extra fittings and things that you never thought of when the estimates were made. It is just the same when a contractor builds your house, he always rings in a good bill for the "extras." THERE ARE NO EXTRAS WHEN YOU BUILD ONE OF THESE HOUSES. You know absolutely what your house costs beforehand, plus a few days of ordinary labor—skilled labor not being necessary at any stage of its construction. Everything is furnished as stated.



Floor Plan—Style F.



Aladdin Five-Room House, Style G

STYLE G—FIVE ROOMS.

Style G has been the most popular of all our designs—the demand for it is constant. This is so because of its particularly attractive appearance and its general convenience. It is particularly desirable for the country, where ground space is not so valuable in frontage, for it is thirty feet long. Its long porch, attractive glazed front door, large central living room, two bed rooms, both placed on one side of house, and dining room and kitchen on the other, make it one of the most conveniently arranged homes imaginable. It is exceptionally well designed for strength and warmth, and when erected will last as long as any wooden structure ever built. As in all other houses, every piece of lumber in entire house is dressed on four sides, paneled doors are supplied for all rooms, flooring all matched, porch roof supported by handsome turned columns. You may have your option of either floor plan shown below at same price.

SPECIFICATIONS—STYLE G

Size 22x30 ft. Price \$421. Cash Discount 5%.

Net Price \$399.95. See Terms.

Height of ceiling, 8 ft. All ceilings square, not hipped.

All lumber selected Yellow Pine and Huron Pine.

Three sills run lengthwise, one on each side and one through the center, and two sills at the ends.

Joists, 2x6 in.

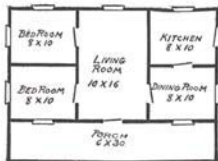
Studding, rafters and ceiling joists, 2x4 in.

Joists, studding and rafters placed every 16 in.

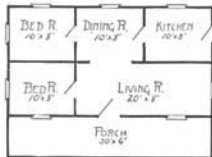
Flooring, 1-inch matched, 3 inches wide.

Siding, 1 inch.

Roof, 1-inch lumber, overlaid with best prepared roofing or shingles.



Floor Plan Style G, Size 22x30.



Windows, 30x66 in., two sliding sash, glass double strength. Patent plaster board (to be nailed on studding), no lath or plaster required.

Doors, outside, 2 ft. 8 in. x 6 ft. 8 in., inside, 2 ft. 8 in. x 6 ft. 8 in., front door upper half glass.

Porch columns, 5 inches, with railing. Front and rear steps.

Base board and all interior trim and finish, clear Yellow Pine.

Hardware, locks, hinges, knobs, nails, paint for two coats inside and out.

See Terms on Page 2.



Aladdin Five-Room Dwelling House, Style G-2

We show here two houses that you will notice to be very similar to the ever popular Style G. They are larger and offer you a selection between two floor plans, at practically the same price. It is our aim to give as large a selection as possible to conform to the tastes and needs of different people. The double casement window in the end, with diamond paned windows, the two square windows, one on each side of the front door, the large oval glass door, are all very attractive features.

SPECIFICATIONS.

Style G-2. Size 28x30. Price \$562. Cash Discount 5%. Net Price \$533.90. See Terms.

Style G-3. Size 28x30. Price \$579. Cash Discount 5%. Net Price \$550.05. See Terms.



Floor Plan G-2.

Patent plaster board (to be nailed on studding), no lath or plaster required.

Window openings 30x66 in., sliding sash, glass double strength.

Doors, outside, 2 ft. 8 in. x 6 ft. 8 in., inside, 2 ft. 8 in. x 6 ft. 8 in., front door upper half glass.

Porch columns, 6 inches, with railing.

Base board and all interior trim and finish clear Yellow Pine.

Hardware, locks, hinges, knobs, nails, paint for two coats inside and out.

Height of ceiling, 9 ft.

All ceilings square, not hipped.

All lumber selected Yellow Pine and Huron Pine.

Sills, 6x6 in.

Three sills run lengthwise, one on each side and one through the center, and two sills at the ends.

Joists, 2x6 in.

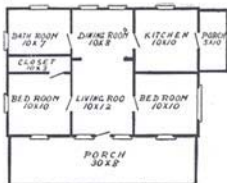
Studding, rafters and ceiling joists, 2x4 in.

Joists, studding and rafters placed every 16 in.

Flooring, 1-inch matched, 3 inches wide.

Siding, 1 inch. Steps for front and rear.

Roof, 1-inch lumber overlaid with best prepared roofing or shingles.



Floor Plan G-3.



Aladdin Five-Room Dwelling House, Style F-2

A LOW COST, ATTRACTIVE SHINGLED BUNGALOW.

Style F-2 is size 18x36 and shingled on sides and roof. The design is identical to Style F, except that it is 18 ft. wide, giving rooms size 9x10 ft. and 18x10 ft. Shingle stain of any color will be furnished for staining the shingles on the side walls. A very attractive combination is a dark brown stain with white trimmings for eaves, porch and windows. The windows will be furnished either as shown, six light or single light.

SPECIFICATIONS—STYLE F-2.

Style F-2. Size 18x36 ft. Price \$483. Cash Discount 5%. Net Price \$458.85. See Terms.



Floor Plan—Style F-2.

Height of ceilings, 8 ft. All ceilings square, not hipped.
 All lumber selected Yellow Pine and Huron Pine.
 Three sills run lengthwise, one on each side and one through the center, and two sills at the ends.
 Joists, 2x6 in. Studding, rafters and ceiling joists, 2x4 in.
 Joists, studding and rafters placed every 16 in.
 Flooring, 1-inch matched, 3 inches wide.
 Roof, 1-inch lumber, overlaid with best shingles.
 Patent plaster board (to be nailed on studding), no lath or plaster required.
 Side walls, shingles. Front and rear steps.
 Doors, outside, 2 ft. 8 in. x 6 ft. 8 in., inside, 2 ft. 8 in. x 6 ft. 8 in., front door upper half glass.
 Windows, openings 30x66 in., two sliding sash, glass double strength.
 Porch columns, 5 inches, and railings.
 Base boards and all interior trim and finish, clear Yellow Pine.
 Hardware, locks, hinges, knobs, nails, paint for two coats inside and out.



Aladdin Four-Room Dwelling House, Style H

STYLE H—FOUR ROOMS.

(Addition not included.)

This attractive house is a very popular design, and has found favor in all localities. It presents a composite and harmonious design, very attractive from the outside and exceptionally convenient interior. It is a square house, such as many people prefer, and in interior is arranged very attractively. The special design double window in dining room, with upper sash of divided glass, makes dining room very light and attractive. Arch leads from living room to dining room, closet off bed room, and pantry off of kitchen. If desired the dining room and living room will be supplied in one large 12x24 ft. room. This house would cost not less than \$1,200 if built by a contractor, and is worth that amount in any part of the United States.

SPECIFICATIONS—STYLE H.

Size 24x30 ft. Price \$516. Cash Discount 5%. Net Price \$490.20. See Terms.

Size 26x32 ft. Price \$626. Cash Discount 5%. Net Price \$594.70. See Terms.

Height of ceilings, 9 ft. All ceilings square, not hipped.

All lumber selected Huron Pine and Yellow Pine.

Sills, 6x8 in. Three sills run lengthwise, one in center and one on each side, two across ends.

Joists, 2x6 in. Studding, rafters and ceiling joists, 2x4 in. Joists, studding and rafters placed every 16 in.

Flooring, 1-inch matched, 3 inches wide. Siding, 1 inch.

Roof, 1-inch lumber, overlaid with best prepared roofing or shingles. Patent plaster board (to be nailed on studding). No lath or plaster required.

Windows, openings, 30x66 in., two sliding sash, glass double strength. Base board and all interior trim and finish, clear Yellow Pine.

Porch columns, turned 6 in., with railing.

Doors, outside, 2 ft. 8 in. x 6 ft. 8 in., front door upper half glass. Front and rear steps.

Hardware, locks, hinges, knobs, nails, paint for two coats inside and out.



Floor Plan, Style H. 24x30.



Floor Plan, Style H. 26x32.



Aladdin Dwelling House, Style JB

Style JB is a quaint and distinctive type of bungalow. It is practically the same in size and arrangement as Style J, shown on opposite page, except that it has a few embellishments in exterior design. The rafter ends under the eaves are exposed and of fancy scrolled design. A group triple window is shown in living room. Gable roof lends a pleasing appearance to front of house. The front door is of special design, having long panels and square divided lights at top.

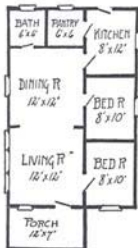
SPECIFICATIONS—STYLE J-B.

Size 20x37 ft. Price \$585. Cash Discount 5%. Net Price \$555.75. See Terms.

Size 22x37 ft. Price \$668. Cash Discount 5%. Net Price \$634.60. See Terms.

Size 24x37 ft. Price \$724. Cash Discount 5%. Net Price \$687.80. See Terms.

Height of ceilings, 9 ft. All ceilings square, not hipped. All lumber selected Huron Pine. Sills, 6x8 in. Three sills run lengthwise, one in center and one on each side, two across ends. Joists, 2x6 in. Studding and rafters, 2x4 in. Joists, studding and rafters placed every 16 in. Flooring, 1-inch matched, 3 inches wide. Siding, 1 inch. Roof, 1-inch lumber, overlaid with best prepared roofing or shingles. Patent plaster board (to be nailed on studding). No lath or plaster required. Windows, openings 30x66 in., two sliding sash, glass double strength. Base board and all interior trim and finish, clear Yellow Pine. Porch columns, 8 inches, with railing. Doors, outside, 2 ft. 8 in. x 6 ft. 8 in., inside, 2 ft. 8 in. x 6 ft. 8 in., front door upper half glass. Front and rear steps. Hardware, locks, hinges, knobs, nails, paint for two coats inside and out.



Floor Plan—Style JB.



Style JB, showing group window in living room.



Aladdin Six-Room Dwelling House, Style J

STYLE J—SIX ROOMS

A cosy, comfortable, convenient, warm home; that exactly describes this remarkable house. It is as good a building in every sense of the word for its size as money can buy, and when erected is worth \$1,400. Note the specifications below and you will see that it is designed and built exactly like any good contractor would build it. This house can be put up and completed by two inexperienced men ready to be papered and painted in one week. This is possible because every stick is cut the right size and ready to be nailed in place, and because our instructions and drawings are so complete that no fitting, figuring or fussing is necessary. Every piece in the house is marked to correspond with the drawings. Study the floor plan and see how conveniently the house is laid out. Note the arch between living room and dining room, large porch, etc.

SPECIFICATIONS—STYLE J.

Size 20x36 ft. Price \$521. Cash Discount 5%. Net Price \$494.95. See Terms.

Height of ceilings, 9 ft. All ceilings square, not hipped.

All lumber selected Yellow Pine and Huron Pine.

Sills, 6x8 in. Three sills run lengthwise, one in center and one on each side, two across ends.

Joists, 2x6 in. Studding, rafters and ceiling joists, 2x4 in.

Joists, studding and rafters placed every 16 in.

Flooring, 1-inch matched, 3 inches wide. Siding, 4 inch.

Roof, 1-inch lumber, overlaid with best prepared roofing or shingles.

Patent plaster board (to be nailed on studding). No lath or plaster required.

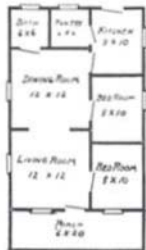
Windows, openings 30x66 in., two sliding sash, glass double strength.

Base board and all interior trim and finish, clear Yellow Pine.

Porch columns, turned 6 in., with railing.

Doors, outside, 2 ft. 8 in. x 6 ft. 8 in., inside, 2 ft. 8 in. x 6 ft. 8 in., front door upper half glass.

Hardware, locks, hinges, knobs, nails, paint for two coats inside and out.



Floor Plan Style J.



Aladdin Six-Room Dwelling House, Style J-3

This house is practically the same as that shown on the foregoing page. It is standard, one of our first designs, and has proven so popular, owing to its convenient arrangement and low price, that we have had to build it in five different sizes to meet the demands of our different customers. It evidences in a remarkable way the merit and economy of our method of construction. We show this below in four sizes.

SPECIFICATIONS.

Style J-3, 24x36 ft.	Price \$630.	Cash Discount 5%.	Net Price \$598.50.	See Terms.
Style J-2, 22x36 ft.	Price \$594.	Cash Discount 5%.	Net Price \$564.30.	See Terms.
Style J-4, 24x38 ft.	Price \$660.	Cash Discount 5%.	Net Price \$627.00.	See Terms.
Style J-5, 26x44 ft.	Price \$870.	Cash Discount 5%.	Net Price \$826.50.	See Terms.

All lumber selected Yellow Pine and Huron Pine.

Height of ceilings, 9 ft. Sills, 6x8 in.; three sills lengthwise, two across ends.

Joists, 2x6 in., studding, rafters and ceiling joists, 2x4 in.

Joists, studding and rafters placed on 16-inch centers. Flooring, 1-inch matched, 3 in. wide; siding, 1 in.

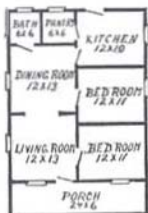
Roof, inch lumber, overlaid with best prepared roofing (or shingles).

Patent plaster board (to be nailed on studding). No lath or plaster required.

Base board and all interior trim and finish, clear Yellow Pine. Porch columns, 8 in. turned.

Windows, openings, 30x66 in., two sliding sash, glass double strength.

Doors, outside 2 ft. 8 in. x 6 ft. 8 in., inside 2 ft. 8 in. x 6 ft. 8 in., front door upper half glass. Front and rear steps. Hardware, locks, hinges, knobs, nails, paint for two coats inside and out.



Floor Plan Style J-4.



Floor Plan Style J-2



Aladdin Dwelling House, Style 200

Style 200 is positively the last word in a low cost two-story, five-room house. It is hardly possible that a two-story house could be designed to utilize its space so economically and with such good results. The living room, opening as it does into the dining room, with a wide arch, gives a great degree of roominess. A living room, dining room, kitchen and two bed rooms are secured in this design at a truly astonishing price for all the material for the complete house.

SPECIFICATIONS.

Style 200. Size 16x20 ft. Price \$525. Cash Discount 5%. Net Price \$498.75. See Terms.

All lumber selected Yellow Pine and Huron Pine.

Height of ceilings, 9 ft., first floor, 8 ft., second floor.

Sills, 6x6 in. Three sills lengthwise, two across ends.

Joists, first and second floors, 2x6 in., studding, rafters and ceiling joists, 2x4 in.

Joists, studding and rafters placed on 16-inch centers. Flooring, 1-inch matched, 3 in. wide; siding, 1 in. Roof, inch lumber, overlaid with best prepared roofing.

Patent plaster board (to be nailed on studding). No lath or plaster required.

Base board and all interior trim and finish.

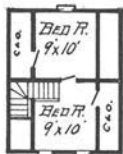
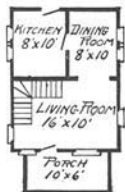
Porch columns, 6 in. turned.

Windows, openings 30x66 in., two sliding sash, double strength glass.

Doors, outside, 2 ft. 8 in. x 6 ft. 8 in., inside, 2 ft. 8 in. x 6 ft. 8 in.

Front and rear steps.

Hardware, locks, hinges, knobs, nails, paint and varnish for two coats inside and out.





Aladdin Dwelling House, Style E, Gambrel

STYLE E—FIVE ROOMS.

On a ground space of 20x20 feet this house gives more room, more comfort, more convenience than has ever before been obtained. Two stories, having two bed rooms, up stairs, each with closets; a hall, a living room, a dining room, a kitchen, an open stairway, a porch, and above all, an attractive looking house.

Note the exterior features. A broad belt across front of house; diamond paned single sash window in hall over stairway; double extended diamond paned window in dining room. The inside of the double window has wide paneled trim around whole frame. A wide window fronts the house in living room. Hand-some 8-inch turned porch column with cap and base is an attractive feature of the porch.

Style E Gambrel is also furnished with bath room on second floor. This is secured by including a dormer window on one side, taking no space from bed rooms. Price with bath room \$33.00 extra.

Two men erected and completed this house in exactly six days at Bay City. It can be done by any two men who are willing to work, assisted by our complete instructions and illustrations.

SPECIFICATIONS ALADDIN DWELLING HOUSE—STYLE E.

Size 20x20 ft. Price \$587. Cash Discount 5%. Net Price \$557.65. See Terms.

All lumber selected Yellow Pine and Huron Pine. Height of ceilings, 9 ft. first floor, 8 ft. second floor. Sills, 6x6 in.; three sills lengthwise, two across ends.

Joists, first and second floors, 2x6 in., studding, rafters and ceiling joists, 2x4 in.

Joists, studding and rafters placed on 16-inch centers.

Flooring, 1 in. matched, 3 in. wide; siding, 1 in.

Roof, inch lumber, overlaid with best prepared roofing (or shingles).

Patent plaster board (to be nailed on studding). No lath or plaster required.

Base board and all interior trim and finish. Porch column, 8 in. turned.

Windows, openings, 30x66 in., two sliding sash, double strength glass.

Doors, outside, 2 ft. 8 in. x 6 ft. 8 in., inside, 2 ft. 8 in. x 6 ft. 8 in. Front door, upper half glass.

Front and rear steps.

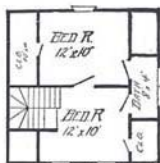
Hardware, locks, hinges, knobs, nails, paint and varnish for two coats inside and out.



Second Floor—Style E.



First Floor Plan—
Style E, Gambrel.



Style E, Gambrel, with Bathroom.



Aladdin Ten-Room Dwelling House, Style 300

The photograph, the floor plan and the price are all that need be called to your attention in showing you this remarkable Style 300. What more can be added in its favor? A ten-room house at this price! And yet if you haven't use for so many rooms we will furnish the house leaving out the partition between the two down stairs bed rooms, making a 10x16 foot living room, or if you wish at least one large bed room up stairs, we will leave out partition between any two rooms. These changes will not change the price. This house is a big seller.

SPECIFICATIONS.

Style 300. Size 30x24 ft. Price \$760. Cash Discount 5%. Net Price \$722. See Terms.

All lumber selected Yellow Pine and Huron Pine. Height of ceilings, 9 ft. first floor; 8 ft. second floor. Sills, 6x6 in.; three sills lengthwise, two across ends.

Joists, first floor 2x6 in.; second floor 2x6 in.; studding, rafters and ceiling joists, 2x4 in.

Joists, studding and rafters placed on 16-in. centers. Flooring, 1-in. matched, 3 in. wide; siding, 1 in. Roof, inch lumber, overlaid with best prepared roofing (or shingles).

Patent plaster board (to be nailed on studding). No lath or plaster required.

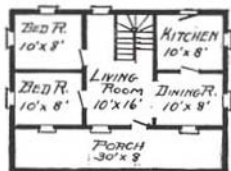
Base board and all interior trim and finish, clear Yellow Pine.

Windows, openings, 30x66 in., two sliding sash, double strength glass.

Doors, outside, 2 ft. 8 in. x 6 ft. 8 in.; inside, 2 ft. 8 in. x 6 ft. 8 in. Front door, upper half glass.

Front and rear steps.

Hardware, locks, hinges, knobs, nails, paint and varnish for two coats inside and out.



First Floor Plan—Style 300.



Second Floor Plan—Style 300.



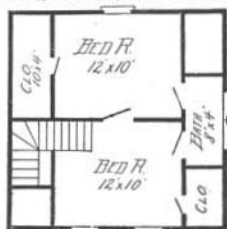
Aladdin Dwelling House, Style ES

Style ES is really a Style E Gambrel with the attractive Newport porch, although it has considerably more room than the regular E Gambrel. You will note that the porch is 32 feet long and 12 feet deep at ends. Pillared arch is furnished between living and dining room and bath room on second floor.

SPECIFICATIONS.

Style E Gambrel. Size 20x26 ft. Price \$665. Cash Discount 5%. Net Price \$631.25. See Terms.

All lumber selected Yellow Pine and Huron Pine. Height of ceilings, 9 ft. first floor; 8 ft. second floor. Sills, 6x6 in.; three sills lengthwise, two across ends. Joists, first and second floors, 2x6 in., studding, rafters and ceiling joists, 2x4 in. Joists, studding and rafters placed on 16-in. centers. Flooring, 1-in. matched, 3 in. wide; siding, 1 in. Roof, inch lumber, overlaid with best prepared roofing (or shingles).



Second Floor Plan—Style ES.



First Floor Plan—Style ES.

Patent plaster board (to be nailed on studding). No lath or plaster required. Bare board and all interior trim and finish. Porch columns, 6 in. turned. Windows, openings 30 x66 in., two sliding sash, double strength glass. Doors, outside, 2 ft. 8 in. x 6 ft. 8 in., inside, 2 ft. 8 in. x 6 ft. 8 in. Front door, upper half glass. Front and rear steps. Hardware, locks, hinges, knobs, nails, paint and varnish for two coats inside and out.



Aladdin Six-Room Dwelling House, Style FM

Style FM is slightly smaller than our Style M, taking less frontage and less depth. It is, however, a very neat six-room house. The living room is 14x18 feet, and an attractive open stairway is in the rear of this room. A 10x12 dining room and an 8x12 kitchen make up the balance of the first floor, while three bed rooms and closet are up stairs. This house can be erected by two men in eight days.

SPECIFICATIONS—STYLE FM.

Size 18x32. Price \$806. Cash Discount 5%. Net Price \$765.70. See Terms.

All lumber selected Yellow Pine and Huron Pine.

Height of ceilings, 9 ft. first floor; 8 ft. second floor.

Sills, 6x6 in.; three sills lengthwise, two across ends.

Joists, first floor, 2x6 in.; second floor, 2x6 in.; studding, rafters and ceiling joists, 2x4 in.

Joists, studding and rafters placed on 16-inch centers.

Flooring, 1 in. matched, 3 in. wide; siding, 1 in.

Roof, inch lumber, overlaid with best prepared roofing (or shingles).

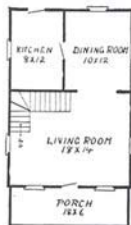
Patent plaster board (to be nailed on studding). No lath or plaster required. Base board and all interior trim and finish, clear Yellow Pine.

Window openings, 30x66 in., two sliding sash, double strength glass.

Doors, outside, 2 ft. 8 in. x 6 ft. 8 in., inside, 2 ft. 8 in. x 6 ft. 8 in. Front door, upper half glass.

Front and rear steps.

Hardware, locks, hinges, knobs, nails, paint and varnish for two coats inside and out.



First Floor Plan—Style FM.



Second Floor Plan—Style FM.

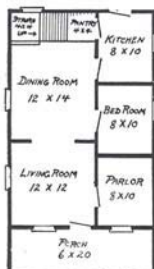


Aladdin Eight-Room Dwelling House, Style M

STYLE M—EIGHT ROOMS, TWO-STORY.

An eight-room, two-story dwelling house complete in every detail, and without any extras to buy for this price—think of it! It is absolutely impossible by any other method of construction than ours. It is only possible because of the great extent of our business, our location in the heart of the timber lands, and the automatic machinery in our plant. And because it is cut by machinery it is absolutely accurate.

Style M has a cosy parlor, large living room, large dining room with open stairway leading from it, bed room, kitchen and pantry—all down stairs. Three large bed rooms with bath room up stairs. An ideal home, perfect in design, construction and detail. The stairway has handsome post, balusters and railing, with attractive diamond paned window above it. A large porch with turned columns and railing fronts the house.



First Floor Plan—Style M.



Second Floor Plan—Style M.

SPECIFICATIONS—STYLE M.

Size 20x36 ft. Price \$897. Cash Discount 5%. Net Price \$852.15. See Terms.

Height of ceilings, 9 ft. first floor, 8 ft. second floor. All ceilings up stairs and down stairs square, not hipped. All lumber selected Yellow Pine and Huron Pine. Sills, 6x8 in. Three sills run lengthwise, one in center and one on each side, two across ends. Joists, 2x6 in. Studding, rafters, and ceiling joists, 2x4 in. Flooring, 1-inch matched, 3 inches wide. Siding, $\frac{1}{2}$ in. Roof, inch lumber, overlaid with best prepared roofing or shingles. Patent plaster board (to be nailed on studding). No lath or plaster needed. Base board and all interior trim and finish, clear Yellow Pine. Porch columns turned 8 in., with railing. Windows, 30x66 in., two sliding sash, glass double strength. Doors, outside 2 ft. 8 in. x 6 ft. 8 in., inside, 2 ft. 8 in. x 6 ft. 8 in. Front door, upper half glass. Front and rear steps. Hardware, locks, hinges, knobs, nails, paint for two coats inside and outside.



Aladdin Nine-Room Dwelling House, Style M-2

Here is a great big, square, honest dwelling house. It is strong, solid, warm, and laid out with plenty of room for every purpose. There is nothing fancy about this house. We have confined ourselves to producing comfort and convenience, and to holding the cost down to honest necessities. Consider the remarkable price for which you can secure this complete house. Look around you at any house in your neighborhood and compare this price with what you could do anywhere else for fifteen hundred dollars. There is a parlor, living room, dining room, bed room, kitchen and pantry down stairs. Up stairs are three bed rooms, bath room and three large closets.

SPECIFICATIONS—STYLE M-2.

Size 24x36. Price \$1,041. Cash Discount 5%. Net Price \$988.95. See Terms. Height of ceilings, 9 ft. first floor, 8 ft. second floor.

All ceilings up stairs and down stairs square, not hipped.

All lumber selected Yellow Pine and Huron Pine.

Sills, 6x8 in. Three sills run lengthwise, one in center and one on each side, two across ends.

Joists 2x8 in. first floor, 2x6 in. second floor. Studding, rafters and

ceiling joists, 2x4 in.

Flooring, 1-inch matched, 3 inches wide. Siding, 1 in.

Roof, inch lumber, overlaid with best prepared roofing or shingles.

Patent plaster board (to be

nailed to studding). No

lath or plaster needed. Base

board and all interior trim

and finish, clear Yellow

Pine. Porch columns

turned 8 in., with railing.

Windows, 30x66 in., two

sliding sash, glass double

strength. Doors, outside,

2 ft. 8 in. x 6 ft. 8 in.,

inside, 2 ft. 8 in. x 6 ft. 8 in.

Front door, upper half

glass. Front and rear steps.

Hardware, locks, hinges,

knobs, nails, paint for

two coats inside and

outside.



Second Floor Plan—Style M-2



First Floor Plan—Style M-2.



Aladdin Dwelling House, Style E-2

Style E-2 has appealed to many persons since we produced it. Requiring but little ground space, it affords the greatest amount of room and convenience. The exterior is decidedly attractive. Both gables are shingled with fancy or plain shingles, as preferred. Plenty of light enters every room. The hall and stairway is lighted with an attractive design semi-oval window. Every feature of this house appeals to the sense of comfort and appearance.

SPECIFICATIONS—STYLE E-2.

Size 24x24 ft. Price \$933. Cash Discount 5%. Net Price \$886.35. See Terms.

All lumber selected Yellow Pine and Huron Pine. Height of ceilings, 9 ft. first floor, 8 ft. second floor. Sills, 6x8 in.; three sills lengthwise, two across ends.

Joists, first floor 2x8 in. and second floor 2x6 in.; studding, rafters and ceiling joists, 2x4 in.

Joists, studding and rafters placed on 16-inch centers.

Flooring, 1-inch matched, 3 inches wide; siding, 1 in.

Roof, inch lumber, overlaid with best roofing (or shingles).

Patent plaster board (to be nailed on studding). No lath or plaster required.

Base board and all interior trim

and finish, clear Yellow Pine.

Porch columns, 8 in. turned.

Windows, 30x66 in., two sliding

sash, double strength glass.

Front window opening, 48x66 in.

Doors, outside, 2 ft. 8 in. x 6 ft.

8 in., inside, 2 ft. 8 in. x 6 ft.

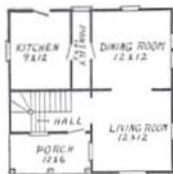
8 in. Front door, upper half

glass. Front and rear steps.

Hardware, locks, hinges, knobs,

nails, paint and varnish for

two coats inside and out.



First Floor Plan—Style E-2.



Second Floor Plan—Style E-2.



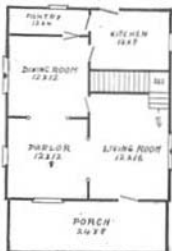
Aladdin Dwelling House, Style H-2

This is a very popular type of house in the smaller cities. It is of the half-shingled style, with a gable roof, porch and split roof dormer. It is one of the simplest and easiest to build of any of our two-story designs. All the arches are furnished with pillars as shown for the No. 1 Denver bungalow. The living room is of generous dimensions, 12x16 feet, and open stairway at the rear. Living room, parlor, dining room, kitchen and pantry are down stairs, and three bed rooms with closets and bath are up stairs.

SPECIFICATIONS—STYLE H-2.

Size 24x36 ft. Price \$1,029. Cash Discount 5%. Net Price \$977.55. See Terms.

Height of ceilings, 9 ft. first floor, 8 ft. second floor. All lumber selected Yellow Pine and Huron Pine. Sills, 6x8 inches, one sill on each side, one through center and two on ends. Studding, 2x4 in. Rafters and ceiling joists, 2x4 in. Joists, 2x8 inches down and 2x6 inches upstairs. Joists, studding and rafters placed every 16 inches. Flooring, 1-inch matched, 3 inches wide. Roof, 1-inch lumber, overlaid with shingles. Patent plaster board (to be nailed on studding). No lath or plaster required. Doors, outside, 2 ft. 8 in. x 6 ft. 8 in., inside, 2 ft. 8 in. x 6 ft. 8 in. Front door, upper half glass. Windows, 30x66 in., two sliding sash, double strength glass. Front window opening, size 48x66 in. Base board and all interior finish, clear Yellow Pine. Front and rear steps. Complete instructions and illustrations for erecting. All hardware, locks, hinges, knobs, nails and paint for two coats inside and outside.



First Floor Plan—Style H-2.



Interior Style H-2. Beamed ceiling, as shown in this photo, costs \$30.00 extra, for parlor and living room.



Second Floor Plan—Style H-2.



Aladdin Dwelling, The Suburban No. 2

The Suburban is one of the best sellers in our catalog, and one that never fails to bring us many kind words from its owners. You cannot fail to be attracted by this house, its exterior appearance and its interior arrangement. A pretty reception hall, with paneled open stairway, grouped windows in living room and dining room are desirable interior features. The roof lines of both house and porch are pleasing. Both arches are supplied with attractive columns with cap and base. We show also a slightly different floor plan below, marked "Special." This adds \$35.00 to the regular price.

SPECIFICATIONS—THE SUBURBAN.

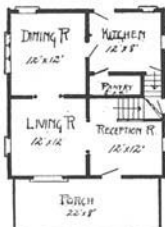
No. 2. Size 24x24 ft. Price \$1,040. Cash Discount 5%.

Net Price \$988.00. See Terms.

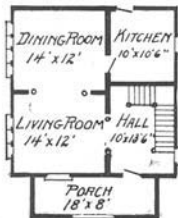
No. 3. Size 26x26 ft. Price \$1,290. Cash Discount 5%.

Net Price \$1,225.50. See Terms.

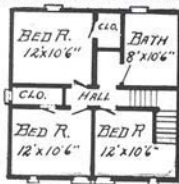
Height of ceilings, 9 ft. first floor, 8 ft. second floor. All lumber selected Yellow Pine and Huron Pine. Sills, 6x8 inches, one sill on each side, one through center and two on ends. Studding, 2x4 in. Joists, 2x8 in. down and 2x6 in. up stairs. Joists, studding and rafters placed every 16 inches. Flooring, 1-inch matched, 3 inches wide. Roof, 1-inch lumber, overlaid with shingles. Patent plaster board (to be nailed on studding). No lath or plaster required. Doors, outside, 2 ft. 8 in. x 6 ft. 8 in., inside, 2 ft. 8 in. x 6 ft. 8 in. Front door, upper half glass. Windows, 30x66 in., two sliding sash, double strength glass. One special group of four windows and one special group of three windows. Front window opening, size 54x66 in. Base boards and all interior trim and finish, clear Yellow Pine. Front and rear steps. Complete instructions and illustrations for erecting. All hardware, locks, hinges, knobs, nails and paint for two coats inside and outside.



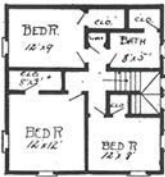
First Floor—The Suburban Special.



First Floor—The Suburban No. 2.



Second Floor—The Suburban No. 2.



Second Floor—The Suburban Special.

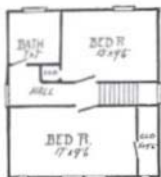


Aladdin Dwelling House, Suburban No. 1



First Floor Plan—
Suburban No. 1.

Owing to the great popularity of the Suburban we found it necessary to add this new and smaller size to enable those who want a smaller house to avail themselves of its many attractive features. From a comparison of the photographs you will see that both houses are identical, except as to size. Below you will see a photo of the interior of the Suburban and also a photo of a special rear semi-enclosed porch which may be added to either size. This rear porch is 6 x 14 ft. over all, the enclosed part or pantry being 6 x 8 ft. and the open part 6 x 6 ft. It sells at \$38.00 extra.



Second Floor Plan—Suburban
No. 1.

SPECIFICATIONS—SUBURBAN No. 1.

(Specifications same as Suburban No. 2.)

Size 20x22 ft. Price \$850. Cash Discount 5%. Net Price \$807.50. See Terms.



Special Rear Porch—The Suburban.



Interior—The Suburban.



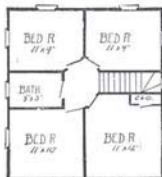
Aladdin Dwelling House, The Addison

Several different features are incorporated in the design of the Addison not shown in our many other styles. It is a big, square, sensibly designed house with finished details to lend a pleasing appearance. The porch work is especially attractive, all posts being paneled, the frieze being embellished with dentals and attractive moulding. The porch

rail may be either enclosed or open, as preferred. Light is given to the roomy attic by the neat dormer window. Wide front windows and handsome front door are noticed. Inside are shown living rooms, with open paneled stairway, dining room, pantry, kitchen and four bed rooms and bath. Closets will be added to bed rooms as desired.



First Floor Plan.



Second Floor Plan.

SPECIFICATIONS—THE ADDISON.

Size 22x32 ft. Price \$1,045. Cash Discount 5%.

Net Price \$992.75. See Terms.

Height of ceilings, 9 ft. first floor, 8 ft. second floor.

All lumber selected Yellow Pine and Huron Pine.

Sills, 6x8 inches, one sill on each side, one through center and two on ends.

Studding, 2x4 in. Rafters and ceiling joists, 2x4 inches.

Joists, 2x8 inches down and 2x6 inches up stairs.

Joists, studding and rafters placed every 16 inches.

Flooring, 1-inch matched, 3 inches wide.

Roof, 1-inch lumber, overlaid with shingles.

Patent plaster board (to be nailed on studding). No lath or plaster required.

Doors, outside, 2 ft. 8 in. x 6 ft. 8 in., inside, 2 ft. 8 in. x 6 ft. 8 in. Front door, upper half glass.

Windows, 30x66 in., two sliding sash, double strength glass. Front window openings, 48x66 in.

Base board and all interior finish, clear Yellow Pine.

Front and rear steps.

Complete instructions and illustrations for erecting.

All hardware, locks, hinges, knobs, nails and paint for two coats inside and outside.



Newel Post for Stairway.



Aladdin Dwelling, The Adams

While the Adams requires a frontage of 30 ft., it is of the always popular central hall design of interior, dividing the dining room and kitchen from the living apartments of the house. The living room may be had as shown, with the den or library at rear, or this partition may be left out and the whole made into one living room, size 12x24 ft. Direct entrance is had from kitchen into hall, while good pantry is placed conveniently behind stairway. Three bed rooms, hall, bath room and closet are shown on second floor. The house is shingled on upper story.

SPECIFICATIONS—THE ADAMS.

Size 30x24 ft. Price \$1,280. Cash Discount 3%. Net Price \$1,216. See Terms.

Height of ceiling, 9 ft. first floor, 8 ft. second floor.

All lumber selected Yellow Pine and Huron Pine.

Sills, 6x8 inches, one sill on each side, two through center and two on ends.

Studding, 2x4 in.

Joists, 2x8 in. down and 2x6 in. up stairs.

Joists, studding and rafters placed every 16 inches.

Flooring, 1-inch matched, 3 inches wide.

Roof, 1-inch lumber, overlaid with shingles.

Patent plaster board (to be nailed on studding). No lath or plaster required.

Doors, outside, 2 ft. 8 in. x 6 ft., 8 in. inside, 2 ft. 8 in. x 6 ft., 8 in.

Front door, upper half glass.

Windows, 30x66 in., two sliding sash, double strength glass.

One special three-group window. Two special two-group.

Base boards and all interior trim and finish, clear Yellow Pine.

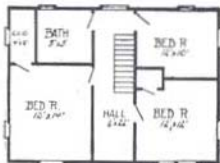
Front and rear steps.

Complete instructions and illustrations for erecting.

All hardware, locks, hinges, knobs, nails and paint for two coats inside and outside.



First Floor—The Adams.



Second Floor—The Adams.

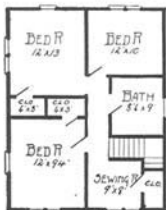


Aladdin Dwelling, The Washington

The half shingled type has become very popular recently, and the Washington is one of the best of this type. It may be built to advantage in any locality, and will appear favorably with much more expensive houses. Note the generous amount of light through large windows, good overhang of eaves, rich paneling of porch pillars, etc. While the porch is not large, it is very attractive in design. You will save from four to six hundred dollars on this house.

SPECIFICATIONS—THE WASHINGTON.

Size 24x30 ft. Price \$1,200. Cash Discount 5%. Net Price \$1,140.
See Terms.



Height of ceilings, 9 ft. first floor, 8 ft. second floor.
All lumber selected Yellow Pine and Huron Pine.
Sills, 6x8 inches, one sill on each side, one through center and two on ends. Studding, 2x4 in. Joists, 2x8 in. down and 2x6 in. up stairs.
Joists, studding and rafters placed every 16 inches.
Flooring, 1-inch matched, 3 inches wide.
Roof, 1-inch lumber, overlaid with shingles.
Patent plaster board (to be nailed on studding). No lath or plaster required.
Doors, outside, 2 ft. 8 in. x 6 ft. 8 in., inside, 2 ft. 8 in. x 6 ft. 8 in.
Front door, upper half glass.
Windows, 30x66 in., two sliding sash, double strength glass. Two special groups of three windows and two special groups of two windows.
Base boards and all interior trim and finish, clear Yellow Pine.
Front and rear steps.
Complete instructions and illustrations for erecting.
All hardware, locks, hinges, knobs, nails and paint for two coats inside and outside.



Aladdin Dwelling, The Standard

If you like a square house, the Standard will surely appeal to you as one of the handsomest you have seen. A broad belt runs around the house just under the upper windows, and the decorative plan calls for dark colored paint above this belt and light below, or the reverse. Exposed scrolled rafter ends are shown under the eaves, which flare straight out; good heavy porch pillars, large triple windows in front, full length porch railing, reaching to ground—these are each and every one distinctly desirable attractions.

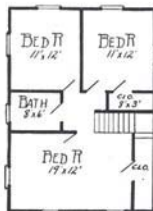
SPECIFICATIONS—THE STANDARD.

Size 22x30 ft. Price \$1,120. Cash Discount 5%. Net Price \$1,074. See Terms.

Height of ceilings, 9 ft. first floor, 8 ft. second floor.
 All lumber selected Yellow Pine and Huron Pine.
 Sills, 6x8 in., one sill on each side, one through center and two on ends.
 Studding and ceiling joists, 2x4 in.
 Joists, 2x8 in. down and 2x6 in. up stairs.
 Joists, studding and rafters placed every 16 inches.
 Flooring, 1-inch matched, 3 in. wide.
 Roof, 1-inch lumber, overlaid with shingles.
 Patent plaster board (to be nailed on studding). No lath or plaster required.
 Doors, 2 ft. 8 in. x 6 ft. 8 in. Front door, upper half glass.
 Windows, 30x66 in., two sliding sash, double strength glass.
 Base boards and all interior trim and finish, clear Yellow Pine.
 Front and rear steps.
 Complete instructions and illustrations for erecting.
 All hardware, locks, hinges, knobs, nails and paint for two coats inside and outside



First Floor Plan.



Second Floor Plan.



Aladdin Dwelling, The Hudson

No comment on our part is needed to convince you of the many attractive features of the Hudson. Every need in a modern and up-to-date home is afforded by this design, with its large living room, dining room, kitchen, pantry, hall, clothes closet, four bed rooms, bath and closets. It seems hardly possible to secure more room, more space or more convenience in 24x36 ground space. Note grade cellar entrance at side.



First Floor—The Hudson.



Second Floor—The Hudson.

SPECIFICATIONS—THE HUDSON.

Size 24x36 ft. Price \$1,100. Cash Discount 5%. Net Price \$1,045.

See Terms.

Height of ceilings, 9 ft. first floor, 8 ft. second floor.

All lumber selected Huron Pine.

Sills, 6x8 inches, one sill on each side, one through center and two on ends.

Studding and ceiling joists, 2x4 in.

Joists, 2x8 in. down and 2x6 in. up stairs.

Joists, studding and rafters placed every 16 inches.

Flooring, 1-inch matched, 3 in. wide.

Roof, 1-inch lumber, overlaid with shingles.

Patent plaster board (to be nailed on studding). No lath or plaster required.

Doors, 2 ft. 8 in. x 6 ft. 8 in.

Front door, upper half glass.

Windows, 30x66 in., two sliding sash, double strength glass.

Base boards and all interior trim and finish, clear Yellow Pine.

Front and rear steps.

Complete instructions and illustrations for erecting.

All hardware, locks, hinges, knobs, nails and paint for two coats inside and outside.



Aladdin Dwelling, The Birmingham

The Birmingham has the shingled gables with siding on first story, split roof dormer with group of four windows, especially designed: divided light windows, small windows in side of living room for over fireplace (although full sized windows will be furnished if desired). Large living room with arches from it and dining room into hall; three large bed rooms and closets and bath—all the desirable things needed to make a real home. It would be impossible to get more beauty, comfort and convenience into a house of this size.

SPECIFICATIONS—THE BIRMINGHAM.

Size 30x26 ft. Price \$1,516. Cash Discount 5%. Net Price \$1,440.20. See Terms.

Height of ceilings, 9 ft. first floor, 8 ft. second floor.
All lumber selected Yellow Pine and Huron Pine.
Sills, 6x8 in. One sill on each side, one through center and two at ends.
Studding, 2x4 in.
Rafters and ceiling joists, 2 x 6 in.
Joists, 2x8 in. down and 2x8 in. up stairs.
Joists, studding and rafters placed every 16 inches.
Flooring, 1-inch matched, 3 in. wide.
Roof, 1-inch lumber, overlaid with shingles.
Patent plaster board (to be nailed on studding). No lath or plaster required.
Doors, 2 ft. 8 in. x 6 ft. 8 in.
Front door, heavy oak, glazed.
Windows, 30x66 in., two sliding sash, double strength glass.
Front and rear steps.
Base boards and all interior trim and finish, clear Yellow Pine.
Hardware, locks, hinges, knobs, nails and paint for two coats inside and out.



First Floor Plan—The Birmingham.



Second Floor Plan—The Birmingham.



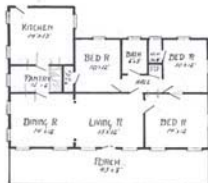
Aladdin Bungalow, The Kentucky

The place of honor is given to the Aladdin Bungalow, "The Kentucky." Is it not beauty in every line? Simplicity is the keynote, yet what could be added to improve its attractions? While it reminds one of the stately colonnades of old colonial mansions, it still retains the delightful atmosphere of modern American bungalows. The broad expanse of porch, with plain Tuscan columns and projecting eaves, successfully blends these two most desirable types without losing the dignity of the one or the cosy hominess of the other. Double front doors seem to open wide a hospitality of true American spirit. Casement windows with divided lights swing into living room, dining room and bed room from the porch. The view of the interior shown below illustrates the columned arch between living room and dining room. Note the moulded cap on the door casings; also the fine paneled doors. Both living room and dining room are unusually well lighted. The Kentucky Bungalow has made a most remarkable impression on our customers, having attained a greater degree of popularity than any design we have ever produced.

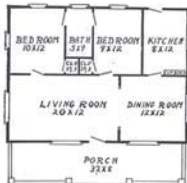
SPECIFICATIONS—THE KENTUCKY.

No. 1. Size 32x32 ft. Price \$955. Cash Discount 5%. Net Price \$907.25. See Terms.

No. 2. Size 43x32 ft. Price \$1,350. Cash Discount 5%. Net Price \$1,282.50. See Terms.



Floor Plan—The Kentucky No. 2.



Floor Plan—The Kentucky No. 1

Height of ceilings, 9 ft. All ceilings square, not hipped. All lumber selected Yellow Pine and Huron Pine. Sills, 6x8 in. Three sills run lengthwise, one in center and one on each side, two across ends. Joists, 2x8 in. Rafters, 2x6 in. Studding and ceiling joint, 2x4 in. Joists, studding and ceiling joints placed every 16 inches. Flooring, 1-inch matched, 3 in. wide. Siding, 1 in. Roof, 1-inch lumber, overlaid with best prepared roofing or shingles. Patent plaster board (to be nailed on studding). No lath or plaster required. Windows, 30x66 in. two sliding sash, glass double strength. Base board and all interior trim and finish, clear Yellow Pine. Porch columns, 10 in. Doors, outside, 2 ft. 6 in. x 6 ft. 8 in., inside, 2 ft. 6 in. x 6 ft. 8 in. Front and rear steps. Hardware, locks, hinges, knobs, nails, paint for two coats inside and out.



Interior of The Kentucky.

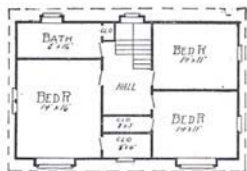


Aladdin Dwelling, The Flanders

The Flanders is a type of architecture that is becoming decidedly popular throughout the country. It is a modification of the Dutch-Colonial, rugged in outline, expressing its individuality in pleasing details, and offering the very greatest degree of room and convenience with the above features. Large living room with window seat, deep hall, attractive staircase, dining room, kitchen and pantry are on first floor, while large bed room, bath, closet, with window, and two extra bed rooms make up second floor.



First Floor—The Flanders.



Second Floor—The Flanders.

SPECIFICATIONS—THE FLANDERS.

Size 22x36 ft. Price \$1,770. Cash Discount 5%.
Net Price \$1,681.50. See Terms.

Height of ceilings, 9 ft. first floor, 8 ft. second floor.
All lumber of selected Yellow Pine and Huron Pine.
Sills, 6x8 in. One sill on each side, one through center and two at ends.

Studding, 2x4 in. Rafters and ceiling joists, 2x6 in.
Joists, 2x8 in. down, and 2x8 in. up stairs.

Joists, studding and rafters placed every 16 in.

Flooring, 1-inch matched, 3 inches wide.

Roof, 1-inch lumber, overlaid with shingles.

Patent plaster board (to be nailed on studding). No lath or plaster required.

Doors, 2 ft. 8 in. x 6 ft. 8 in.

Front door, heavy oak, glazed.

Windows, 30x66 in., two sliding sash, double strength glass. Front and rear steps.

Base boards and all interior trim and finish, clear Yellow Pine.

Hardware, locks, hinges, knobs, nails and paint for two coats inside and out.



Aladdin Two-Apartment, "The Duplex"

The Aladdin two-family house, The Duplex, is produced as the result of a large demand we have had for a double house. The double house has some very attractive features. It enables its owner to live in one part and secure a good rental from the other—and his return is consequently much greater than if he had built two separate houses. The Duplex is a big, strong, conveniently arranged house, and its completed cost will be several hundred dollars less than it could possibly be built for by any other method. Note the double front and back porches.

SPECIFICATIONS—THE DUPLEX.

Size 24x36 ft. Price \$1,150. Cash Discount 5%. Net Price \$1,092.50. See Terms.

Height of ceilings, 9 ft. first floor, 8 ft. second floor. All ceilings up stairs and down stairs square, not hipped. All lumber selected Yellow Pine and Huron Pine.

Sills, 6x8 in. Three sills run lengthwise, one in center and one on each side, two across ends.

Joists, 2x8 in. first floor; 2x8 in. second floor; studding and rafters, 2x4 in.

Flooring, 1-inch matched, 3 in. wide.

Siding, 1 in.

Roof, inch lumber, overlaid with best prepared roofing or shingles.

Patent plaster board (to be nailed on studding). No lath or plaster needed.

Base board and all interior trim and finish, clear Yellow Pine.

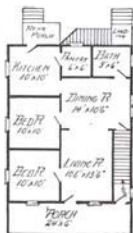
Porch columns, square, 10 in., with railing.

Windows, 30x66 in., two sliding sash, glass double strength.

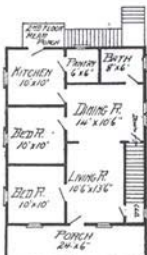
Doors, outside, 2 ft. 8 in. x 6 ft. 8 in., inside, 2 ft. 8 in. x 6 ft. 8 in. Front door, upper half glass.

Front and rear steps.

Hardware, locks, hinges, knobs, paint for two coats inside and outside.



First Floor Plan—The Duplex.



Second Floor Plan—The Duplex.

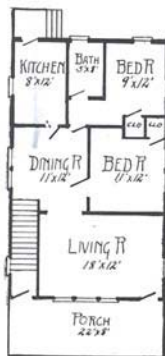


Aladdin Two-Apartment, The Pasadena

This is a type of the conventional city two-apartment house. The front of the second story is shingled and has very attractive windows across the front. The dormer window gives light and air to the attic. Separate entrances are afforded for each apartment. Large living room, dining room, two bed rooms, bath and closets give an attractive floor plan. This design has been found very practical and readily rentable in all localities. It will make an excellent investment, and should bring a high interest return at this very low price.

SPECIFICATIONS—THE PASADENA.

Size 22x44 ft. Price \$1,529. Cash Discount 5%. Net Price \$1,452.55. See Terms.



First Floor Plan.

Height of ceilings, 9 ft. first floor,
8 ft. second floor.
All ceilings up stairs and down stairs
square, not hipped.
All lumber selected Huron Pine and
Yellow Pine.
Sills, 6x8 in. Three sills run length-
wise, one in center and one on
each side, two across ends.
Joists, 2x8 in. first floor; 2x8 in. second
floor; studding and rafters, 2x4 in.
Flooring, 1-inch matched, 3 in. wide.
Siding, $\frac{1}{4}$ in.
Roof, inch lumber, overlaid with best
prepared roofing or shingles.
Patent plaster board (to be nailed on
studding). No lath or plaster
needed.
Base board and all interior trim and
finish, clear Yellow Pine.
Porch columns, 10 in., with railing.
Windows, 30x66 in., two sliding sash,
glass double strength.
Doors, outside, 2 ft. 8 in. x 6 ft. 8 in.,
inside, 2 ft. 8 in. x 6 ft. 8 in. Front
door, upper half glass.
Hardware, locks, hinges, knobs, nails,
paint for two coats inside and out-
side.



Second Floor Plan.

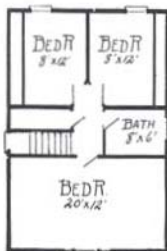


Aladdin Dwelling House, The Portland

Four gables give the Portland a surprising amount of room on its second floor. Large front room with closets, two rear bed rooms, bath and linen closet are secured with this excellent roof design. On the first floor a twenty-foot living room extends across the full front of the house, arch leads to dining room, and good kitchen, pantry and inset rear porch are arranged. Entrance to basement is had under main stairway. The porch railing is of the full length square spindle type and square columns set on pedestals. Where concrete is shown above porch floor in this picture we furnish large square pedestals. Attractive group window fronts the upper part of the house, and the gable is furnished with fancy shingles.

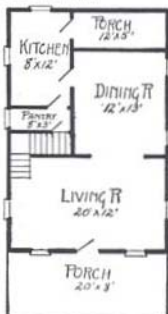
SPECIFICATIONS—THE PORTLAND.

Size 20x38 ft. Price \$780. Cash Discount 5%. Net Price \$741. See Terms.



Second Floor Plan.

Height of ceilings, 9 ft. first floor.
8 ft. second floor.
All lumber selected Yellow Pine and
Huron Pine.
Sills, 6x8 in.; one sill on each side, one
through center and two on ends.
Studding, 2x4 in.
Joists, 2x8 in. down and 2x6 in. up
stairs.
Joists, studding and rafters placed
every 16 inches.
Flooring, 1-inch matched, 3 in. wide.
Roof, 1-inch lumber, overlaid with
shingles.
Patent plaster board (to be nailed on
studding). No lath or plaster
required.
Doors, outside, 2 ft. 8 in. x 6 ft. 8 in.,
inside, 2 ft. 8 in. x 6 ft. 8 in.
Front door, upper half glass.
Windows, 30x66 in., two sliding sash,
double strength glass. One special
group of windows.
Hardware, locks, hinges, knobs, nails,
paint for two coats inside and
outside.



First Floor Plan.



Aladdin Barns

GAMBREL ROOF BARN

Three types of barns are here shown. In every case the construction of the barns and material is identical, the only difference being in size and designs. These barns have given the highest satisfaction and service on the western plains of Nebraska and Kansas, where they are subjected to the heaviest strains of wind and storms. They will stand any strains that any high class barn can be expected to withstand. The Gambrel design has side walls 14 ft. high, and the gable roof barn has side walls 16 ft. high.



Gable Design Barn.

GAMBREL DESIGN BARN.

No. 1. Size 20x30 ft. Price \$415. Add \$130 for each 10 ft. longer.

No. 2. Size 30x30 ft. Price \$500. Add \$150 for each 10 ft. longer.

5% discount from above prices for full amount with order.



Special Barn.

GABLE DESIGN BARN.

Special.	Size 16x24 ft.	Price \$318.	Cash Discount 5%.	Net Price \$302.10.	See Terms.
No. 1.	Size 20x30 ft.	Price \$356.	Cash Discount 5%.	Net Price \$338.20.	See Terms.
No. 2.	Size 22x40 ft.	Price \$502.	Cash Discount 5%.	Net Price \$476.90.	See Terms.
No. 3.	Size 30x40 ft.	Price \$599.	Cash Discount 5%.	Net Price \$569.05.	See Terms.
No. 4.	Size 30x60 ft.	Price \$775.	Cash Discount 5%.	Net Price \$736.25.	See Terms.
No. 5.	Size 40x60 ft.	Price \$981.	Cash Discount 5%.	Net Price \$931.95.	See Terms.

ALADDIN HUNTER'S LODGE.

This building is designed for settler's house, or hunter's lodge. It is built just like other houses, strong and substantial. One door in front and four windows, two on each side. Height of side wall, 7 ft. 6 inches. No plaster board with this house.

Size 12x16. Price \$104. Cash Discount 5%. Net Price \$98.80. See Terms.



Aladdin Bungalow, The Oakland

Low roof, overhanging eaves, and rugged mission lines stamp this bungalow as typical of many found in sunny Oakland, California. Note the wide front windows in both the dining room and living room. Also wide window in end of living room and high double casement window in end of dining room. Cupboard is furnished with house for the kitchen. Light, roomy bath room is conveniently placed between bed rooms. The main roof overhangs the porch.

SPECIFICATIONS—"THE OAKLAND."

Size 32x32 ft. Price \$944. Cash Discount 5%. Net Price \$896.80. See Terms.

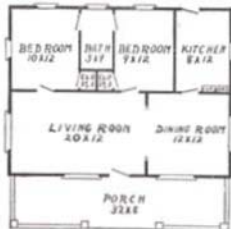
Height of ceilings, 9 ft. All ceilings square, not hipped.

All lumber selected Yellow Pine and Huron Pine.

Sills, 6x8 in. Three sills run lengthwise, one in center and one on each side, two across ends.

Joists, 2x8 in. Rafters, 2x6. Studding and ceiling joist, 2x4.

Joists, studding, rafters and ceiling joists placed every 16 in.



Floor Plan "The Oakland."

Flooring, 1-inch matched, 3 in. wide. Siding, 1 in.

Roof, 1-inch lumber, overlaid with best prepared roofing or shingles.

Patent plaster board (to be nailed on studding). No lath or plaster required.

Windows, 30x66 in., two sliding sash, glass double strength.

Base board and all interior trim and finish, clear Yellow Pine.

Porch columns, square, with railing.

Doors, outside, 2 ft. 8 in. x 6 ft. 8 in., inside, 2 ft. 8 in. x 6 ft. 8 in. Front and rear steps.

Hardware, locks, hinges, knobs, nails, paint for two coats inside and out.



Aladdin Bungalow, The Maples

The Maples typifies the bungalow spirit. Low, flat lines, wide eaves, odd windows, exposed rafter ends and simple outlines. A really ideal arrangement is shown inside. Entrance hall leads directly into living room, front bed room or bath. This plan separates bath entrance from any of the rooms usually occupied. Light is furnished to bath through frosted glass window from dining room. This window is placed high. Corner arch leads from living room to dining room. All rooms but the dining room are corner rooms, with plenty of light and air in each. The dining room has attractive wide window. Five rooms with bath, hall and porch. For No. 2 size see floor plan page 10.

SPECIFICATIONS—THE MAPLES.

No. 1. Size 30x24 ft. Price \$720. Cash Discount 5%. Net Price \$684. See Terms.
No. 2. Size 30x16 ft. Price \$520. Cash Discount 5%. Net Price \$494. See Terms.

Height of ceilings, 9 ft. All lumber selected Yellow Pine and Huron Pine.

Sills, 6x6 in. Three sills run lengthwise, one in center and one on each side, two across ends.

Joists, 2x8 in. Rafters, 2x4 in. Studding and ceiling joists placed every 16 inches.

Flooring, 1-inch matched, 3 inches wide. Siding, 1 inch.

Roof, 1-inch lumber, overlaid with best prepared roofing or shingles.

Patent plaster board (to be nailed on studding). No lath or plaster required.

Windows, 30x66 in., two sliding sash, glass double strength. Base board and all interior trim and finish, clear Yellow Pine.

Porch columns, 6 in. turned.

Doors, outside, 2 ft. 8 in. x 6 ft. 8 in., inside, 2 ft. 8 in. x 6 ft. 8 in. Front door special design, 3x7 ft. Front and rear steps.

Hardware, locks, hinges, knobs, nails, paint for two coats inside and outside.



No. 1. Size 30x24 ft.



Aladdin Bungalow, The Jackson

Individuality marks the design of this two-story bungalow. The gable roof porch, with groups of three square porch columns, split roof dormer, triple and double window groups, are each added to secure finish and harmony. Six rooms are shown in the floor plans, four down stairs and two up stairs. Entrance may be had to basement underneath main stairs, or this space may be used for pantry. Pillared arch is furnished between living room and dining room.

SPECIFICATIONS—THE JACKSON.

Size 22x20 ft. Price \$685. Cash Discount 5%. Net Price \$650.75.

See Terms.

Height of ceilings, 9 ft. and 7 ft. 6 in.

All lumber selected Yellow Pine and Huron Pine.

Sills, 6x6 in. Three sills run lengthwise, one in center and one on each side, two across ends.

Joists, 2x8 in. Rafters, 2x4 in. Studding and ceiling joists placed every 16 inches.

Flooring, 1-inch matched, 3 in. wide. Siding, $\frac{1}{2}$ in.

Roof, 1-inch lumber, overlaid with best prepared roofing or shingles.

Patent plaster board (to be nailed on studding). No lath or plaster required.

Windows, 30x66 in., two sliding sash, glass double strength.

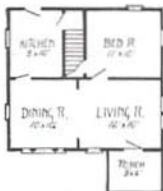
Base board and all interior trim and finish, clear Yellow Pine.

Porch columns, 6 in.

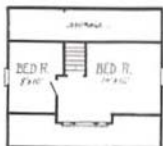
Doors, outside, 2 ft. 8 in. x 6 ft. 8 in., inside, 2 ft. 8 in. x 6 ft. 8 in.

Front door, upper half glass. Front and rear steps.

Hardware, locks, hinges, knobs, nails, paint for two coats inside and out.



First Floor Plan—The Jackson.



Second Floor Plan—The Jackson.



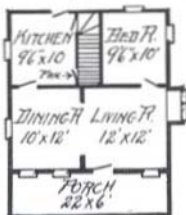
Aladdin Bungalow, The Huron

Unpretentious, yet pleasing in general outline, the Huron will be found decidedly satisfactory throughout. It is of the two-story bungalow type, giving the utility of a second story, with the usual cottage or bungalow outline. The bay window forms a cosy nook for a window seat. The porch has a solid railing, much desired by many.

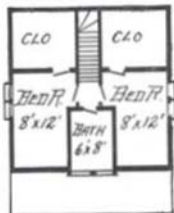
SPECIFICATIONS—THE HURON.

Size 22x28 ft. Price \$760. Cash Discount 5%. Net Price \$722.

See Terms.



First Floor Plan—The Huron.



Second Floor Plan—The Huron.

Height of ceiling, 9 ft. first floor, 8 ft. second floor.
All lumber selected Yellow Pine and Huron Pine.
Sills, 6x8 inches; one sill on each side, one through center and two at ends.

Studding, 2x4 in. Rafters, 2x4 in.

Joists, 2x8 in. down and 2x6 in. upstairs.

Joists, studding and rafters placed every 16 in.

Siding, 1 in. Flooring, 1-inch matched, 3 in. wide.

Roof, 1-inch lumber, overlaid with shingles, or roofing.

Patent plaster board (to be nailed on studding). No lath or plaster required.

Doors, outside, 2 ft. 8 in. x 6 ft. 8 in., inside, 2 ft. 8 in. x 6 ft. 8 in.

Front door, upper half glass.

Windows, 30x66 in., two sliding sash, double strength glass.

Base boards and all interior trim and finish, clear Yellow Pine.

Front and rear steps.

Complete instructions and illustrations for erecting.

All hardware, locks, hinges, knobs, nails and paint for two coats inside and outside.



Aladdin Bungalow, The Cleveland

Note the photograph of the interior as well as the exterior of this attractive design. The beamed ceilings and paneled walls are not included in the regular price as stated below. Price includes regular plaster board walls and ceilings, of course.

SPECIFICATIONS.

Size 36x26 ft. Price \$1,290. Cash Discount 5%. Net Price \$1,225.50. See Terms.

Height of ceilings, 9 ft. 6 in. All ceilings square, not hipped.

All lumber selected Yellow Pine and Huron Pine.

Sills, 6x8 in. Three sills run lengthwise, one in center and one on each side, two across ends.

Joists, studding and rafters placed every 16 inches.

Flooring, 1-inch matched, 3 in. wide. Siding, 1 in.

Roof, 1-inch lumber, overlaid with shingles.

Patent plaster board (to be nailed on studding). No lath or plaster required.

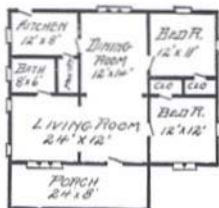
Windows, 30x66 in., two sliding sash, glass double strength.

Base board and all interior trim and finish, clear Yellow Pine.

Porch columns square, with railing.

Doors, outside, 2 ft. 8 in. x 6 ft. 8 in., inside, 2 ft. 8 in. x 6 ft. 8 in., front door special design oak.

Front and rear steps. Hardware, locks, hinges, knobs, nails, paint for two coats inside and out.



Floor Plan—The Cleveland.



Interior—The Cleveland.



Aladdin Bungalow, Style O. E. S.

STYLE O. E. S. WITH STUCCO WALLS.

This style hardly comes under the heading of a bungalow, although it incorporates some of the bungalow features. We take the opportunity here to show what we can furnish for interiors, and how careful thought and study given to the interior decorations will result in the most artistic arrangements. Go carefully over the arrangements of rooms, doors, closets, bath, etc. Every requirement for comfort and convenience is provided for.

Vestibule entrance into hall, cloak closet in hall, direct entrance into kitchen from hall, pantry between dining room and kitchen, inside grade entrance to cellar and outside. Sleeping porch over kitchen, large closet in owner's bed room. Direct entrance to bath room from owner's bed room, as well as hall, closets for both small bed rooms. All windows are casement design, opening inward.

OUTSIDE WALLS OF EITHER STUCCO, SHINGLES OR SIDING.

The price of Style O. E. S., given below, is based on siding for all walls, with shingles for roof. If stucco is desired add \$90 to price. If shingles are desired for walls add \$65 to price.



Living Room.



Dining Room.



Aladdin Bungalow, Style O. E. S.—Continued.

SPECIFICATIONS—STYLE O. E. S.

Size 36x30 ft. Price \$1,800. Cash Discount 5%. Net Price \$1,710. See Terms.

Height of ceilings, 9 ft. first floor, 8 ft. second floor. All lumber selected Huron Pine and Yellow Pine. Sills, 6x8 in., one sill on each side, two through center and two on ends.

Studding and second floor ceiling joists, 2x4 in.

Joists, 2x10 in. down and 2x8 in. up stairs.

Joists, studding and rafters placed every 16 in.

Flooring, 1-inch matched, 3 in. wide.

Roof, 1-inch lumber, overlaid with shingles.

Patent plaster board (to be nailed on studding).

No lath or plaster required.

Doors, 2 ft. 8 in. x 6 ft. 8 in.

Front door, upper half glass, 3 ft. 4 in. x 7 ft.

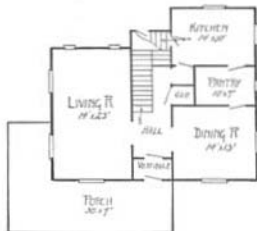
Window openings, 46x58 in., casement sash, double strength glass.

Base boards and all interior trim and finish, clear Yellow Pine.

Front and rear steps.

Complete instructions and illustrations for erecting.

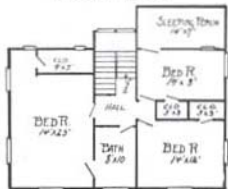
All hardware, locks, hinges, knobs, nails and paint for two coats inside and outside.



First Floor—O. E. S.



From Living Room Through Hall to Dining Room.



Second Floor—O. E. S.



Aladdin Bungalow, The Newark

Similar in design to the Denver, the Newark offers besides the choice of either one story or two stories. This bungalow is shingled on sides and roof, the shingles being furnished right to grade level, including cellar windows, foundation posts and everything needed for the foundation. The floor plans offer some attractions different from the ordinary run. The No. 2 size has dormer window both front and rear.

SPECIFICATIONS— THE NEWARK.

No. 1. Size 36x32 ft.

Price \$1,320.

Cash Discount 5%.

Net Price \$1,254.

See Terms.

No. 2. Size 36x32 ft.

Price \$1,440.

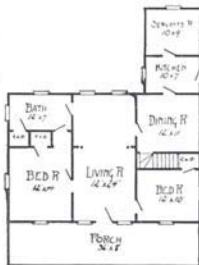
Cash Discount 5%.

Net Price \$1,368.

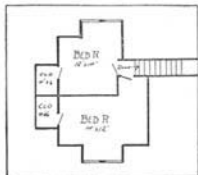
See Terms.



First Floor—Newark No. 2.



Newark No. 1.



Second Floor—Newark No. 2.



Cut Showing Roof of Newark Set Up at Mill.



Aladdin Bungalow, The Sherman

Living room, dining room, den, kitchen, pantry, two bed rooms, bath and closet are shown in the plan of this desirable bungalow. The living room is square and of good dimensions, with arch leading to dining room. Attractive group windows are furnished for living room. The arrangement of the several rooms is very convenient and handy. Divided square lights are furnished for upper sash of all windows, although they will be furnished with single large glass if preferred.

SPECIFICATIONS—THE SHERMAN.

Site 26x48 ft. Price \$1,144. Cash Discount 5%. Net Price \$1,086.80. See Terms.



Floor Plan—The Sherman.

Height of ceilings, 9 ft. All ceilings square, not hipped.
 All lumber selected Yellow Pine and Huron Pine.
 Sills, 6x8 in. Three sills run lengthwise, one in center and one on each side, two across ends.
 Joists, 2x8 in. Rafters, 2x6 in. Studding and ceiling joists, 2x4 in. Joists, studding and ceiling joists placed every 16 inches.
 Flooring, 1-inch matched, 3 in. wide. Siding, 1 in.
 Roof, 1-inch lumber, overlaid with best prepared roofing or shingles.
 Patent plaster board (to be nailed on studding). No lath or plaster required.
 Windows, 30x66 in., two sliding sash, glass double strength.
 Base board and all interior trim and finish, clear Yellow Pine.
 Porch columns, square, with railing.
 Doors, outside, 2 ft. 8 in. x 6 ft. 8 in., inside, 2 ft. 8 in. x 6 ft. 8 in. Front and rear steps.
 Hardware, locks, hinges, knobs, nails, paint for two coats inside and out.



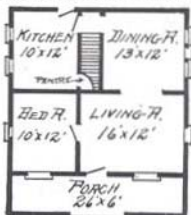
Aladdin Bungalow, The Detroit

A two-story design and yet carrying genuine bungalow lines throughout. Roomy, well arranged and very satisfactory to all owners. The price, as on our other buildings, is at least 30 per cent. lower than the same building could possibly be built by ordinary methods. Consider the advantage of knowing in advance the exact cost of all the material for the complete structure.

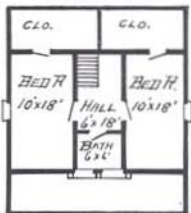
SPECIFICATIONS.

Size 26x30 ft. Price \$890. Cash Discount 5%. Net Price \$845. See Terms.

Height of ceilings, 9 ft., second floor, 8 ft.
 All lumber selected Yellow Pine and Huron Pine.
 Sills, 6x8 in. Three sills run lengthwise, one in center and one on each side, two across ends.
 Joists, 2x8 in. first floor, 2x6 in. second floor. Studding, rafters and ceiling joists, 2x4 in.
 Joists, studding and rafters placed every 16 in.
 Flooring, 1-inch matched, 3 in. wide.
 Roof, 1-inch lumber, overlaid with shingles.
 Side walls, shingles.
 Patent plaster board (to be nailed on studding). No lath or plaster required.
 Windows, 30x66 in., two sliding sash, glass double strength, also special sizes.
 Base board and all interior trim and finish, clear Yellow Pine.
 Porch columns square, with railing.
 Doors, outside, 2 ft. 8 in. x 6 ft. 8 in., inside, 2 ft. 8 in. x 6 ft. 8 in.
 Front door special design. Front and rear steps.
 Hardware, locks, hinges, knobs, nails, paint for two coats inside and outside.



First Floor—The Detroit.



Second Floor—The Detroit



Denver No. 1, Erected in a Public Park by the City of Charleston, S. C.

Aladdin Bungalow, The Denver

"THE DENVER"—FIVE ROOMS.

We believe you will agree with us in our assertion that "The Denver" is one of the prettiest little bungalows you ever saw. It is harmonious in outline, attractive to the eye, novel in design, and distinct in detail. Note the broad, sweeping roof lines, with flaring eaves. The outside window and door trim is broad at the base and tapers slightly toward the top. The entire exterior is shingled to the ground. We furnish cellar windows with this house, it being designed for a thirty-inch rise above ground. Note the interior of living room, with pillared arches.

We show two sizes of this style, size 30x28. This No. 1 size has two bed rooms, living room, dining room, bath room, kitchen and closet. The living room is separated from the dining room by a very wide arch with turned pillars at each side. While separating the two rooms, still they are so designed as to give the living room greater size than simply 10x12 feet.

No. 2 size is 36x30 feet, has the same number of rooms, but they are large in size. The living room is 12x24 foot, and there is a vestibule with pillared entrance. The arch between living room and dining room has a handsome pillar at each side with paneled base, like cut shown elsewhere in catalog.



Floor Plan "The Denver." No. 1 Size, 30x28 ft. Price \$886. Cash Discount 5%. Net Price \$841.70. See Terms.

The labor on a house of this character is ordinarily proportionately higher than in the houses of plainer design. But as we furnish this house, your labor is no higher than one of our other houses. Every piece of the roof construction is set up at our mill by experienced workmen and properly assembled. The scrolled rafter ends are carefully turned out, as is every piece in the entire house, ready to be nailed in place.



Aladdin Bungalow, The Denver

SPECIFICATIONS.

Height of ceilings, 9 ft. All ceilings square, not hipped.

All lumber selected Yellow Pine and Huron Pine.

Sills, 6x8 in. Three sills run lengthwise, one in center and one on each side, two across ends.

Joists, 2x8 in. Studding and rafters, 2x4 in.

Joists, studding, rafters and ceiling joists placed every 16 in.

Flooring, 1-inch matched, 3 in. wide. Sheathing and shingles for all sides.

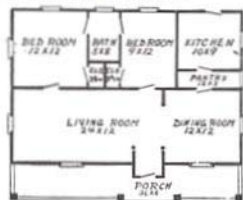
Roof, 1-inch lumber, overlaid with shingles.

Patent plaster board (to be nailed on studding). No lath or plaster required.

Windows, 30x66 in., two sliding sash, glass double strength, also special sizes. Front window openings, 54x66 in.

Base board and all interior trim and finish, clear Yellow Pine.

Porch columns, square, with railing.



Floor Plan "The Denver," No. 2 Size, 36x30 ft.

Price \$1,156. Cash Discount 5%.

Net Price \$1,098.20.

Doors, outside, 2 ft. 8 in. x 6 ft. 8 in., inside, 2 ft. 8 in. x 6 ft. 8 in., front door special design. Front and rear steps.

Hardware, locks, hinges, knobs, nails, paint for two coats inside and outside.



Column Furnished with Arches.



Aladdin Bungalow, The Springfield

The Springfield affords a generous sized living room, which is also used as a dining room; two bed rooms, each with closets; kitchen, small pantry, bath room, vestibule and eight-foot porch. Where only one bed room is needed and the owner wants a dining room, the partition dividing living room and front bed room is set over to left of vestibule, giving dining room size 10x11 in front of kitchen, and living room 14 feet x 11 feet where front bed room is shown.

SPECIFICATIONS—THE SPRINGFIELD.

Size 24x28. Price \$590. Cash Discount 5%. Net Price \$560.50. See Terms.

Height of ceilings, 9 ft. All ceilings square, not hipped.

All lumber selected Yellow Pine and Huron Pine.

Sills, 6x6 in. Three sills run lengthwise, one in center and one on each side, two across ends.



Floor Plan—The Springfield.

Joists, 2x8 in. Rafters, 2x6 in. Studding and ceiling joists placed every 16 in.

Flooring, 1-inch matched, 3 in. wide. Siding, 2 in.

Roof, 1-inch lumber, overlaid with best prepared roofing or shingles.

Patent plaster board (to be nailed on studding). No lath or plaster required.

Windows, 30x66 in., two sliding sash, glass double strength.

Base board and all interior trim and finish, clear Yellow Pine.

Porch columns, 6 in. turned.

Doors, outside, 2 ft. 8 in. x 6 ft. 8 in., inside, 2 ft. 8 in. x 6 ft. 8 in. Front door special design, 3 ft. x 7 ft. Front and rear steps.

Hardware, locks, hinges, knobs, nails, paint for two coats inside and out.



Aladdin Bungalow, The Texas

The porch of the Texas is somewhat different from most of our other designs. It commends itself as a protection from wind, rain and sun, and is especially appreciated in locations that are more or less exposed to these elements. In the arrangement of rooms we have found this type especially popular. The grouping of windows as shown above lends much to its attractiveness.

SPECIFICATIONS.

Size 36x28 ft. Price \$1,040. Cash Discount 5%. Net Price \$983.25. See Terms.

Height of ceilings, 9 ft. All ceilings square, not hipped.

All lumber selected Yellow Pine and Huron Pine.

Three sills run lengthwise, one on each side and one through the center, and two sills at the ends.

Joists, 2x8 in.

Studding, rafters and ceiling joists, 2x4 in.

Joists, studding and rafters placed every 16 in. Flooring, 1-inch matched, 3 in. wide.

Roof, 1-inch lumber, overlaid with best prepared roofing or shingles.

Patent plaster board (to be nailed on studding).

No lath or plaster required.

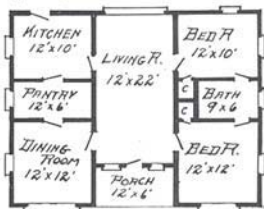
Side walls, shingles

Window openings, 30 x 66 in., two sliding sash, glass double strength. Two triple frame special and one mullion frame.

Doors, outside, 2 ft. 8 in. x 6 ft. 8 in., inside, 2 ft. 8 in. x 6 ft. 8 in., front door special design oak. Front door, 3 ft. x 7 ft.

Base boards and all interior trim and finish, clear Yellow Pine.

Hardware, locks, hinges, knobs, nails, paint for two coats inside and out.



Floor Plan—The Texas.



Aladdin Bungalow, The Newport

THE NEWPORT—STYLE S.

With 52-foot Porch.

Every feature that is demanded in a high class residence is incorporated in this handsome structure. Air and freedom, comfort and convenience—these were the points sought after and attained in the design. A 52-foot porch—16 feet deep at the ends.

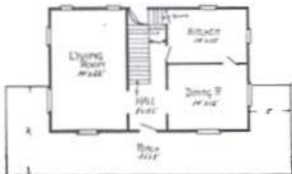
A great airy, central living room—16 feet wide, 22 feet deep and 20 feet to the peak of the beamed ceiling, in the design No. 1.

A diamond-paned dormer window throws light through the upper part of the room, and two windows in rear and two in front make the lower part very light, in addition to the small glass in the handsome front door. An attractive gallery runs around the two sides and across the front of this room, with open stairway leading to gallery at rear of room. Rear of this room is so arranged that large open fireplace may be placed if desired.

Arch leads to dining room, with kitchen in rear, and two bed rooms with bath between are on opposite side. Two light, roomy bed rooms are on second floor; this gives living room, dining room, kitchen, four bed rooms and bath. Enough for family and friends. The floor plan of Newport No. 2 explains itself.

This house erected by usual methods would cost you between \$3,000 and \$3,500. Our method of doing all the skilled labor in our mills, and by automatic machinery, saves a large proportion of the cost, aside from the fact that you buy the complete material direct from the forest.

The above cut is a photo of the Newport as furnished with shingle siding. Shingle siding adds \$48 to the regular price. The Newport is regularly furnished with our ordinary siding.



No. 2 Newport—First Floor.



No. 2 Newport—Second Floor.

Aladdin Bungalow, The Newport—Continued



Interior "The Newport," No. 1

We furnish plaster board for this entire house, making it thoroughly warm, as much so as any first-class modern dwelling. Another feature of the plaster board is its heat resistance in the summer time. The Newport will always be found cool in the hottest weather.

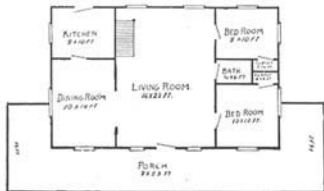
The gable roof at ends of porch, the shingled porch railing and porch gable, the handsome turned columns on porch, make it very attractive in appearance. Note the long double diamond-paned window in dining room, with swivel opening arrangement, admitting fresh air to upper part of room and light in plenty. All features of this house are in harmony.

SPECIFICATIONS—THE NEWPORT. STYLE S.

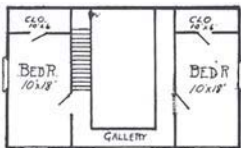
No. 1. Size 30x36 ft. Price \$1,559. Cash Discount 5%. Net Price \$1,481.15. See Terms.

No. 2. Size 30x36 ft. Price \$1,590. Cash Discount 5%. Net Price \$1,510.50. See Terms.

Height of ceilings, 9 ft. All lumber selected Yellow Pine and Huron Pine. Sills, 6x8 in. One sill on each side, one through center and two at ends. Studding, 2x4 in. Rafters and ceiling joists, 2x6 in. Joists, 2x8 in. down, and 2x6 in. up stairs. Joists, studding and rafters placed every 16 inches. Flooring, 1-inch matched, 3 in. wide. Roof, 1-inch lumber, overlaid with best prepared roofing (shingles if preferred). Patent plaster board (to be nailed on studding). No lath or plaster required. Doors, 2 ft. 8 in. x 6 ft. 8 in. Front door heavy oak, glazed, special design, size 3 ft. 4 in. x 7 ft. Windows, 30x66 in., two sliding sash, double strength glass. Front and rear steps. Base board and all interior trim and finish, clear Yellow Pine. Hardware, locks, hinges, knobs, nails and paint for two coats inside and out. Complete instructions and illustrations for erecting.



No. 1. Floor Plan "The Newport"—First Floor.



Floor Plan "The Newport"—Second Floor.



Aladdin Bungalow, The Albany

Several strikingly distinctive features will be noticed in the design of this handsome bungalow, The Albany. It is of a similar type to our Denver. Notice the construction of the porch railing—different. The exterior window and door trim tapers toward the top, the porch pillars are square and paneled, the dormer windows in roof give light and room to upstairs bedrooms. All side walls and roof are shingled.

SPECIFICATIONS—THE ALBANY.

Size 28x44 ft. Price \$1,680. Cash Discount 5%. Net Price \$1,596. See Terms.

All lumber selected Yellow Pine and Huron Pine.

Height of ceilings, 9 ft. first floor, 8 ft. second floor.

Sills, 6x8 in., three sills lengthwise, two across ends.

Joists, first floor, 2x8 in. and second floor, 2x6 in., studding and rafters, 2x4 in.

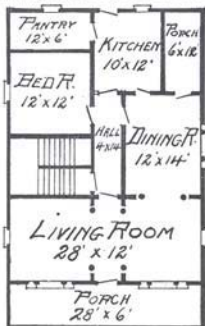
Joists, studding, rafters and ceiling joists placed on 16-in. centers.

Flooring, 1-inch matched, 3 in. wide.

Siding, shingles.

Roof, inch lumber, overlaid with best shingles.

Patent plaster board (to be nailed on studding). No lath or plaster required.



First Floor—The Albany

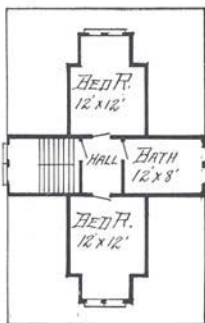
Base board and all interior trim and finish, clear Yellow Pine.

Porch columns, 10 in. square.

Windows, 30x66 in., two sliding sash, double strength glass. Two special triple frames and four special multi-lion frames.

Doors, 2 ft. 8 in. x 6 ft. 8 in. Front door, 2 ft. 10 in. x 7 ft. 8 in., oak, upper half glass.

Front and rear steps. Hardware, locks, hinges, knobs, nails, paint and varnish for two coats inside and out.



Second Floor—The Albany

Screens and Storm Sash

First quality screens will be furnished with any house in the catalog at the following prices, fitting each individual window, regardless of size:

Half screens, 60 cents per window. Full screens, 90 cents per window. Screen doors, extra quality, \$1.25 per door.

Storm sash of four-light glass will be furnished for any window in house, regardless of size, at the following prices:

Storm sash, 90 cents per window. Storm doors, glazed, \$1.90 per door.

Chimneys

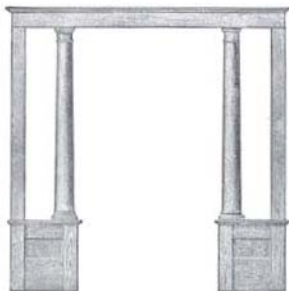
A chimney of any material can be built in any Aladdin house exactly as it would be built in any good dwelling house. It can be located at any point in house desired by you. Our houses can be heated with furnace, stove, boiler, or fireplace.

You would think it strange to see nowadays a carpenter making his own doors, making his windows, sash, porch columns, etc., instead of buying them from the sash and door factory, where they are made by machinery so much better, so much cheaper and quicker. It was not many years ago when all these things were made by the carpenters by hand. These doors, windows, columns, etc., can be produced cheaper in the mill because of labor and time-saving machinery. Just so with the Aladdin house—the complete house. It is prepared in our mill, just as the door for your ordinary carpenter is prepared—ready to be erected, quickly, easily and at a big saving in labor and time—which means a saving in money—your money.

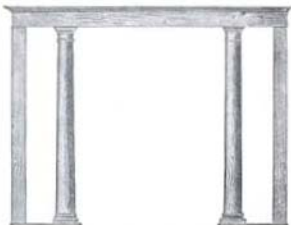
Five hundred dollars will do exactly the work of seven hundred and fifty dollars, possibly more. Five hundred dollars for an Aladdin house, complete, and purchased direct from the manufacturer—or seven hundred and fifty dollars spread out thin to your lumber yard, planing mill, hardware dealer, plasterer, contractor and carpenter—which shall it be? As profits to these different individuals!—or in your own pocket!



Design of Inside Doors in all Aladdin Houses.



Design of Arch Between Living Room and Dining Room—No. 2 Size Denver.



Design of Arch Between Living Room and Dining Room—No. 1 Size Denver.

Aladdin Summer Cottages

"Never in my life have I derived such pleasure and satisfaction from work or play as was given me from watching my ALADDIN house grow under my own hands. From a pile of lumber I fashioned a complete, sturdy house. Every step was intensely interesting; annoyance or trouble I experienced none, for every stick and board was marked and numbered and found its place perfectly. Gentlemen, I congratulate you on your wonderful system, and thank you for the pleasure and profit you have given me."—B. H. McLean, Middle Haddon, Conn.

The summer cottage is perhaps the most popular pleasure or summer recreation of today. Added to its common sense and healthful features there is the advantage of its economy, after first cost. Fresh air, outdoor life, change from monotony of home life and the pleasure of entertaining one's friends pleasantly all make for its popularity.

Many instances occur where it is desired to erect a summer home in the mountains, on the seashore or other place where material for construction cannot be had at hand, and where skilled labor must be imported. Our method of construction is ideal for instances of this kind, for we ship your complete house in one shipment, all materials being on the ground, and any ordinary labor may be utilized.

We show in the following pages a variety of designs, sizes and prices that will surely enable your ideas of a cottage to be gratified. You will note that every cottage has a commodious porch. The sizes run from two rooms up.

SUMMER COTTAGE CONSTRUCTION.

Please bear in mind that our summer cottages are constructed to last for years. They are identical to our winter construction, except that we do not supply plaster board for interior. The partitions are of fine beaded matched lumber. Every piece of lumber in the whole house is dressed on all four sides, so that the entire interior may be oiled, stained or painted if desired. In all summer cottages doors are, of course, furnished for all interior openings. We do not furnish steps for Summer Cottages or paint for inside.

Do not confuse Aladdin knock-down houses with the "Portable" kind. Aladdin houses are not portable in any sense. When erected they are exactly like any good house erected by a competent contractor. They cannot be taken apart. They are up to stay. Our summer cottages are really warm enough for occupying the year round in all except the coldest climates. Our siding is tongued and grooved, making a perfectly tight side wall, wind, rain and weatherproof.



Summer Cottage, Style GG.



Aladdin Summer Cottage, Style GW

Here is a bungalow of very plain lines, but attractive to the eye. Its simplicity makes possible the exceptionally low price at which we produce it. This house has three bed rooms, living room, dining room, bath, den and kitchen. The chimney and fireplace are, of course, optional with the purchaser. We do not furnish material for the chimney.

We guarantee that this house can be erected in one-quarter the length of time required to build it by ordinary methods. By saving three-quarters the labor and by using unskilled labor you can readily see how great is the saving for the finished structure. No architects, contractors or carpenters necessary. You can either do the work yourself, supervise the work done, or hire a handy, trustworthy man to supervise it. Our instructions and the simplicity of our method makes the work progress with ease and dispatch.

SPECIFICATIONS—STYLE GW.

Size 30x36 ft. Price \$668. Cash Discount 5%. Net Price \$634.60. See Terms.

Three sills run lengthwise, one on each side and one through the center, and two sills at the ends.

Joists, 2x6 in.

Studding and rafters, 2x4 in.

Joists, studding and rafters placed every 16 inches.

Flooring, 1-inch matched, 3 in. wide.

Siding, 1 in.

Roof, 1-inch lumber, overlaid with best prepared roofing.

Windows, 30x66 in., two sliding sash, glass double strength, also 5 ft. 2 in. x 2 ft. 8 in.

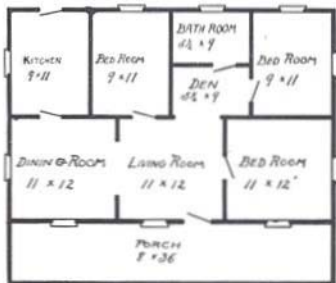
Arch openings, 6 ft. x 7 ft. 6 in. and 5 ft. x 7 ft. 6 in.

Doors, outside, 2 ft. 8 in. x 6 ft. 8 in., inside, 2 ft. 8 in. x 6 ft. 8 in., front door special design.

All lumber selected Yellow Pine and Huron Pine.

Partitions, matched ceiling.

Hardware, locks, hinges, knobs, nails, and two coats of paint for outside.



Floor Plan—Style GW.



Aladdin Five-Room Summer Cottage, Style KK.

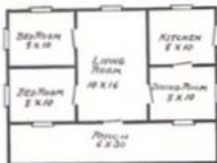
"THE RUSTIC"—STYLE KK—FIVE ROOMS.

Can you equal this in quaint design, comfort or appearance? Or in price, for a complete house? A big, roomy, shady porch, a large central living room, two bed rooms, dining room and convenient kitchen—five rooms, size 22x30 feet. This house has attracted much favorable comment wherever erected, for it is different from anything you've seen. We supply a specially designed, heavy panel front door, in harmony with general detail. The arrangement of rooms is such as we have found most popular and giving the maximum of room and convenience. We now furnish Style KK with two diamond pane windows, one on each side of front door.

When you have erected and finished any one of the Aladdin houses you will not have a shaving on the ground. This does not mean that you will have no pieces left, for we usually furnish several pieces of each size of lumber extra, but it means that you won't have to use a saw or chisel in the work. Every piece is cut perfectly to fit by us.

SPECIFICATIONS—STYLE KK.

Size 22x30 ft. Price \$411. Cash Discount 5%. Net Price \$390.45. See Terms.



Floor Plan—Style KK, Size 22x30.

Three sills run lengthwise, one on each side and one through the center, and two sills at the ends.

Joists, 2x6 in.

Scudding and rafters, 2x4 in.

Joists, studding and rafters placed every 16 inches.

Flooring, 1-inch matched. Siding, 1 inch.

Roof, 1-inch lumber, overlaid with best prepared roofing.

Windows, 30x66 in., two sliding sash, glass double strength.

Doors, outside, 2 ft. 8 in. x 6 ft. 8 in., inside, 2 ft. 8 in. x 6 ft. 8 in., front door special design.

All lumber selected Yellow Pine and Huron Pine.

Partitions, matched ceiling.

Hardware, locks, hinges, knobs, nails and two coats of paint for outside.



Aladdin Summer Cottage, Style GG.

STYLE GG—FIVE ROOMS.

The large porch running full length of Style GG has made it particularly attractive for summer or seashore use. This porch is 6x30 feet. In the center of the cottage is a large living or lounging room. The layout of the rooms in this house is particularly attractive, dining room and kitchen being on one side of house and bed rooms on the other side. Style GG never fails to give exceptional pleasure to all purchasers.

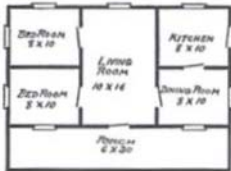
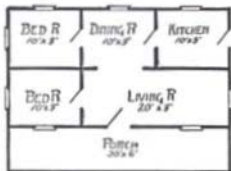
Over two hundred of these houses, Style GG, have been shipped to all parts of the country. Every purchaser has saved several hundred dollars. If it meets your requirements as to size, you cannot do better than to select it.

We also build Style GG in size 28x30, making living room 10x20 and other four rooms 10x10, with 8x30 porch.

SPECIFICATIONS—STYLE GG—SUMMER COTTAGE.

Size 22x30 ft. Price \$379. Cash Discount 5%. Net Price \$360.05. See Terms.

Size 28x30 ft. Price \$507. Cash Discount 5%. Net Price \$481.65. See Terms.



Three sills run lengthwise, one on each side and one through the center, and two sills at the ends. Studs and rafters, 2x4 in. Joists, studding and rafters placed every 16 in. Flooring, 1-inch matched. Siding, 1 in. Roof, 1-inch lumber, overlaid with best prepared roofing. Windows, 30x56 in., two sliding sash, glass double strength, also size 30x30 in., single sash. Doors, outside, 2 ft. 8 in. x 6 ft. 8 in., inside, 2 ft. 8 in. x 6 ft. 8 in., front door, upper half glass. Porch columns, 5 inches. Partitions of matched ceiling. All lumber selected Yellow Pine and Huron Pine. All hardware, locks, hinges, nails and paint for two coats outside.



Aladdin Five-Room Summer Cottage, Style FF

STYLE FF—FIVE ROOMS.

Style FF is the original design of Aladdin Summer Cottages. It is perhaps the best known design in the world, for it has been shown in the largest magazines and papers in the country. It is particularly attractive in design, convenience and comfort, and never fails to give the greatest satisfaction to owners. Large living room, two bed rooms, dining room and kitchen offer every degree of comfort and make it a complete little home.

SPECIFICATIONS—STYLE FF—SUMMER COTTAGE.

Size 16x36 ft. Price \$314. Cash Discount 5%. Net Price \$298.30. See Terms.

Size 18x36 ft. Price \$377. Cash Discount 5%. Net Price \$358.15. See Terms.



Floor Plan—Style FF.
Size 16x36.

Three sills run lengthwise, one on each side and one through the center, and two sills at the ends.

Joists, 2x6 in. Studding and rafters, 2x4 in.

Joists, studding and rafters placed every 16 in. Flooring, 1-inch matched.

Roof, 1-inch lumber, overlaid with best prepared roofing.

Siding, $\frac{1}{2}$ inch.

Windows, size 30x66 in., two sliding sash, glass double strength.

Doors, outside, 2 ft. 8 in. x 6 ft. 8 in., inside, 2 ft. 8 in. x 6 ft. 8 in., front door upper half glass.

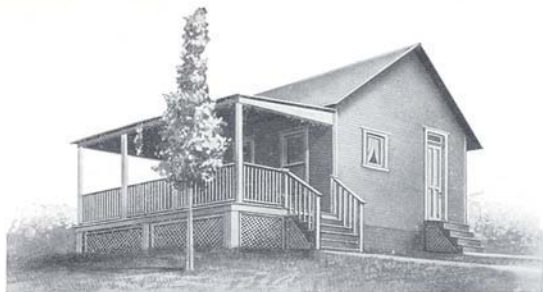
Porch columns, 5 inches.

Partitions, matched ceiling.

All lumber selected Yellow Pine and Huron Pine.

All hardware, locks, hinges, nails, and paint for two coats outside.

Remember that Aladdin houses are the original Readi-Cut houses—the first that were ever placed on the market. We spent many years to perfect our method of manufacturing houses, so that any man, without previous skill with tools, can easily erect his own home.



Aladdin Summer Cottage, "The McLean"

This house is a special one-room summer cottage, the room being 18x20 feet in size, and with a porch 10x20 feet. A chimney such as is shown may or may not be erected, as the purchaser prefers. As furnished regularly a window is set next to the chimney in the rear, where the door is shown, this being placed for a special reason of the purchaser of this cottage from which the photo was taken. If you like this house, but would wish a partition in the center, we will furnish it at a slight additional charge.

SPECIFICATIONS—THE McLEAN.

Size 20x28. Price \$271. Cash Discount 5%. Net Price \$257.45. See Terms.

(Specifications same as Style DD.)



Rear Addition on our Style H.

Additions to Rear of Aladdin Houses

Owing to the demand which we have had in the past for additions to our dwelling houses, we have found it necessary to catalog a rear addition for most of our houses. The additions can be purchased with the house, or at any future time. The prices which follow allow for one partition inside the addition, if desired. Each one of the following does not include plaster board.

Style A.....	Size of Addition	8x10 ft.—\$48.00 net
Style B.....	Size of Addition	8x10 ft.—48.00 net
Style C.....	Size of Addition	8x16 ft.—74.00 net
Style D.....	Size of Addition	8x16 ft.—74.00 net
Style F.....	Size of Addition	8x16 ft.—74.00 net
Style G.....	Size of Addition	8x16 ft.—74.00 net
Style J.....	Size of Addition	10x20 ft.—134.00 net
Style FM.....	Size of Addition	10x18 ft.—126.00 net
Style M.....	Size of Addition	10x20 ft.—134.00 net
Style H.....	Size of Addition	10x24 ft.—140.00 net
Style E.....	Size of Addition	10x20 ft.—134.00 net
Style S.....	Size of Addition	10x16 ft.—110.00 net

From the above sizes and prices you can apply an addition to any house in catalog. If an addition is desired to a house that is not an Aladdin, add 10 per cent. to the above prices.



Aladdin Four-Room Summer Cottage, Style DD

STYLE DD—FOUR ROOMS, AND STYLE CC—THREE ROOMS.

Style DD Summer Cottage may be used in several different ways, with respect to its interior. It may be used as one bed room, one sitting room, a dining room and kitchen, two bed rooms, dining room and kitchen or three bedrooms and combined dining room and kitchen. It is cosy, compact and convenient—and remarkably low priced.

SPECIFICATIONS—STYLE DD—SUMMER COTTAGE.

Size 16x26 ft. Price \$262. Cash Discount 5%. Net Price \$248.90.

Three sills run lengthwise, one on each side and one through the center, and two sills at the ends.

Studding and rafters, 2x4 in.

Joists, studding and rafters placed every 16 in. Flooring, 1-inch matched.

Roof, 1-inch lumber, overlaid with best prepared roofing. Siding, 4 in.

Windows, size 30x66 in., two sliding sash, glass double strength.

Doors, outside, 2 ft. 8 in. x 6 ft. 8 in., inside, 2 ft. 8 in. x 6 ft. 8 in.; front door, upper half glass.

Porch columns, 5 inches.



Floor Plan, Style DD.
Size 16x26.



Floor Plan—Style CC,
Size 16x26.

Partitions of matched ceiling.

All hardware, locks, hinges, knobs, nails, and paint for two coats outside.

All lumber selected Yellow Pine and Huron Pine.

STYLE CC SUMMER COTTAGE—THREE ROOMS.

Style CC gives a large 10x16 living room and a bed room 8x10 ft., and kitchen 8x10 ft. The only difference in the two styles is that one partition is left out.

STYLE CC—SUMMER COTTAGE.

Price \$258.00. Cash Discount 5%. Net Price \$245.10. See Terms.



Aladdin Two-Room Summer Cottage, Style AA

STYLE AA—TWO ROOMS.

The photograph above tells the story of the attractiveness of this little cottage as well as volumes of description. Its porch makes an excellent summer living room and the two rooms may be used for any purpose desired. Scores of these cottages have been erected all over the country and they are a continual delight to their owners. It is built just like our larger sizes, and will last just as long.



Size 16x16.

Floor Plan—Style AA.

SPECIFICATIONS—STYLE AA.

Size 16x16 ft. Price \$159. Cash Discount 5%. Net Price \$151.05.
See Terms.

Two sills run lengthwise and two across the ends. Studding and rafters, 2x4 in. Joists, studding and rafters placed every 16 inches. Flooring, 1-inch matched. Siding, 1 in. Roof, 1-inch lumber, overlaid with best prepared roofing. Windows, size 30x66 in., two sliding sash, glass double strength. Doors, outside, 2 ft. 8 in. x 6 ft. 8 in., inside, 2 ft. 8 in. x 6 ft. 8 in.; front door upper half glass. Porch columns, 5 in. Partitions of matched ceiling. All hardware, locks, hinges, knobs, nails and paint for two coats outside. All lumber selected Yellow Pine and Huron Pine.

ALADDIN TWO-ROOM SUMMER COTTAGE—STYLE BB.

Size 10x22 ft. Price \$134. Cash Discount 5%. Net Price \$127.30. See Terms.



Style BB is identical to Style AA except that the porch runs the short way of the house, and the windows are slightly different. This little cottage is wonderfully low priced, lower than it is possible to build a house even with inferior material. The price includes everything complete.



BB, Size 10x22

Aladdin Automobile Garages

ALADDIN AUTO HOUSE

No. 3 and No. 4.

No. 3 Aladdin Auto House—Size 16x20 feet. Designed for two touring cars, with ample room for accessories, tools, etc. At the price we quote it is a very remarkable house—harmonious in design, strong and substantial. You cannot equal it anywhere. Has large double paneled door in front with large window, and door and window in rear of house. Front door runs on best grade track and easily. Is perfect in every way for use in housing two touring cars.

Size 16x20 ft. Price \$212. Cash Discount 5%. Net Price \$201.40. See Terms.

No. 4 Aladdin Auto House—Size 20x20 feet, joists 2x6; three sills run lengthwise and two across ends; roof inch lumber overlaid with best prepared roofing; size of large door 8x9 feet; paneled door in rear, size 2 ft. 6 in. x 6 ft. 8 in.; windows in front and rear size 26x60 in.; two sliding sash; runway 2-inch plank. Front door on best grade tracks. Size 20x20 ft. Price \$255. Cash Discount 5%. Net Price \$242.25. See Terms.



ALADDIN AUTO HOUSE No. 1 AND No. 2.

Our Auto Garages are lower in price than you can secure a building of equal strength and appearance by any other method of construction. They are positively proof against vibration, will house a machine perfectly, no matter what its weight, and are warm and convenient. All lumber is dressed on four sides, making inside so that it may be either oiled or painted. Doors will, in all cases, admit car with top up. Any one of these houses can be erected in from one to three days by any unskilled man. Strong floor is supplied with every house.

No. 1 Aladdin Auto House—Size 10x16 ft. Designed for all sizes of runabouts. Height of walls, 8 feet; studding and rafters, 2x4 in.; two sills run lengthwise and two across ends; flooring 1-inch matched; siding, 3/4 in. tongued and grooved; roof tongued and grooved matched lumber; size of large door 8x8 ft.; runway 2-inch planks. Price includes all lumber cut to fit, all hardware, locks, nails, hinges, paint, any color, for two coats. Size 10x16 ft. Price \$95. Cash Discount 5%. Net Price \$90.25. See Terms.

No. 2 Aladdin Auto House—Size 12x20 ft. Designed for all sizes of touring cars; roomy, light and airy, with plenty of room for tools, accessories, etc. Same as above specifications, except that it has large window with glass in place, sash and trim. Size 12x20 ft. Price \$156. Cash Discount 5%. Net Price \$148.20. See Terms.

Terms—Fifty per cent. cash with order, balance C. O. D. This is not meant as a reflection on your financial standing, but is an invariable rule, and we will not sell houses on any other terms. A discount of 5 per cent. is allowed from these prices where full amount is sent with order. For your convenience we have shown the list price and the net price with each house.

References: Commercial Bank, Bay City; Bay City Bank, or any other bank in Bay City.

NORTH AMERICAN CONSTRUCTION CO., Bay City, Mich.



