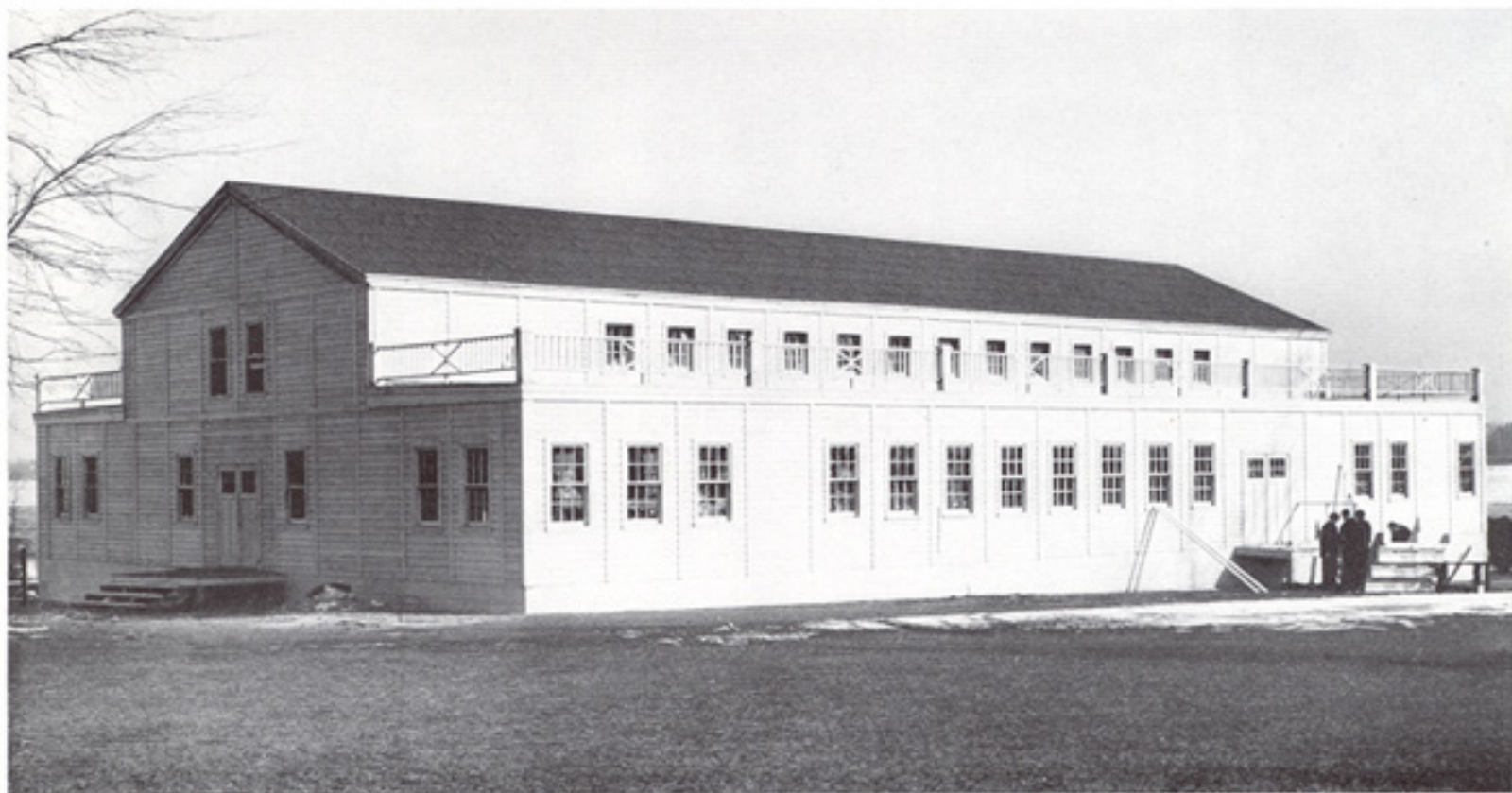
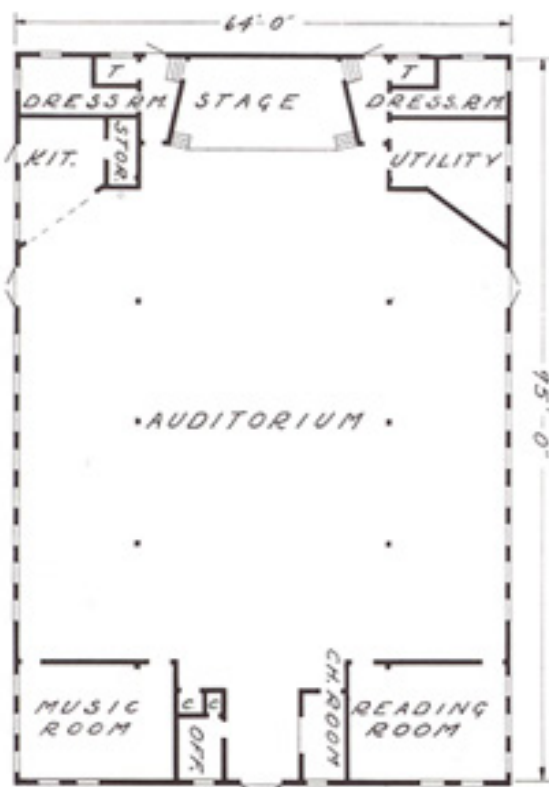


Aladdin Recreation Building, Size 64 ft. by 95 ft.



Designed for Use and Erected for the Navy



The Aladdin Recreation Building is a convincing exhibit of the ability and capacity of the Aladdin System and the Aladdin Organization to meet housing and building requirements quickly and definitely satisfactorily. This imposing structure, size 64' x 95' minimized the usual time element of a structure of this size to the surprise and satisfaction of government agencies.

Of particular value is the spacious auditorium. Its generous capacity can be given over to meetings, theatrical plays, dinners, or moving picture exhibitions. In the space over the lobby in the monitor, a movie projection booth is provided which is reached by a ladder installed in the closet at left of lobby.

In the rear end of the building, a 24' x 12' stage has connecting dressing rooms on each side.

Kitchen is also provided for food service for meetings.

On either side of the front lobby entrance, ample size music and reading rooms are provided, also office and check room opening directly on to the lobby entrance. In each unit, ample storage space is provided with an abundance of lighting and ventilation from windows on all sides of the floor and monitor sections.

The Aladdin Company is prepared to meet any service and delivery requirement in the furnishing of this structure. It can be furnished all materials ready-cut to size to be assembled and built in the field, or standardized prefabricated panels, ready to be set up and bolted in place in the field. Complete plans and standardized jigs are sufficiently flexible to permit a choice of single or double construction and shipment can be made F.O.B. The Aladdin Company plant in Bay City, Michigan or The Aladdin Company plant in Portland, Ore.

WRITE, WIRE OR PHONE FOR PRICES

THE ALADDIN COMPANY

OFFICES AND MILLS
BAY CITY, MICH.

GENERAL OFFICES
BAY CITY, MICHIGAN

OFFICES AND MILLS
PORTLAND, OREGON