

ALADDIN

Aladdin Prefabricated Buildings

for the Armed Forces have been, during the past year, shipped from our Michigan and Oregon mills to:

Alaska
Southwest Pacific
Alberta, Canada
Iceland
Africa
Michigan
Ohio
California
New Mexico
Texas

Exactng service requirements of climate, minimum weights, cubage, simplicity and speed of erection, low cost and fast delivery, have in all cases been met to the satisfaction of Government Purchasing Agencies.

Thirty-seven years experience in prefabrication of many types of buildings by The Aladdin Company insure the successful completion of all projects entrusted to the company.



THE ALADDIN COMPANY

OFFICES AND MILLS
BAY CITY, MICH.

GENERAL OFFICES
BAY CITY, MICHIGAN

OFFICES AND MILLS
PORTLAND, OREGON

Serving Our Armed Forces Through Two Wars



1917 Fort Snelling—Officers Training Camp—9,000 Men—Completed in 26 Working Days

SAVE SPACE

An Aladdin Read-cut building, when packed for export, contains approximately one-half the number of cubic feet the same building would require if prefabricated in panels.

"Ahead of Time" performance over a "two-war" span of service to the armed forces is the established record of The Aladdin Company on major war projects. In 1917, when prefabrication was a "step-child," Aladdin completed the Officers Training Camp at Fort Snelling, Minnesota in 26 working days with every detail of specifications fulfilled—"ahead of time." In 1942, Fort Brady barracks and service buildings, another project awarded Aladdin, was completed with every detail of specifications fulfilled, "ahead of time." The record is unbroken—complete training camps, service buildings, hutments for airfields, war workers housing projects, large or small—in every instance the all important "date of completion" has been met "ahead of time" to the enthusiastic satisfaction of government housing, purchasing and engineering officials. This war service experience of more than 25 years has definitely fixed the time element of Aladdin projects to a near-tangible quantity—"Ahead of Time."

SAVE TIME

Aladdin Read-cut buildings can be erected as with practically the same rapidity as prefabricated panel type buildings as we provide drawings and instructions showing every step of the erection.

1942

Fort Brady—Barracks and Service Buildings—Completed 10 Days Ahead of Time



Originators of Readi-Cut and Prefabricated Home Building

The Aladdin Company was founded thirty-seven years ago by W. J. Sovereign and O. E. Sovereign, who perfected and established the first Readi-cut System of Home Building in the world.

Today, as in the past, the company is still managed and owned by these two brothers. Customers of thirty-seven years ago may write to The Aladdin Company today and know that the management is unchanged and that they are writing to and dealing with old friends.

Their vast experience in prefabrication, in the choice of the best materials for their use, in the preparation and manufacture of the lumber is of tremendous value to every customer of Aladdin. This service is

included as a part of every Aladdin transaction.

The Aladdin System, as originated by The Aladdin Company, has been approved by the Government and hundreds of big corporations, by large purchases of Aladdin Houses. This company manufactured and shipped the first complete readi-cut home built in the world.

The Aladdin Company operates mills in Michigan and Oregon, which are among the largest lumber markets in the country.

Aladdin Barracks — Domestic and Export Service



Aladdin Barracks, size 20' x 48' are the result of collaboration on the part of government authorities to insure necessary accommodation and convenience for troops, also Aladdin engineers in designing rapidly erected demountable structures from readily available materials insuring prompt delivery.

Assembled from standard prefabricated panels, the size 20' x 48' can be increased to any desired length in multiples of 8'. To meet any requirement, three types of construction are offered—single (S) construction provides only drop siding covering on wall panel units, one inch roof sheathing on roof panel frames over which 55 lb. smooth surface roofing with cement and nails to be applied in the field, and for floor panels both joists and flooring readi-cut, to be assembled in the field; or double (D) construction with insulation board on side wall panel frame and this overlaid with drop siding giving a double thickness for side walls; 1/2-inch insulation board and one inch roof sheathing applied over roof panel frame, 55 lb. smooth surface roll roofing with cement and nails provided to be applied in the field. 1/2-inch rigid insulation sub-flooring with 1 x 4 or 1 x 6 finish flooring with building paper between (all flooring materials readi-cut to size to be assembled in panels in the field); or triple (T) construction, which is double construction as described in the foregoing with additional one-half inch insulation board furnished loose to be applied on the inside of side walls and roof panels after panels are assembled and bolted in place. Floor panels for all types of construction provide all materials—joists, and flooring—readi-cut for assembly in panels in the field to greatly minimize shipping cubage.

Side wall panels include those with doors and windows also gable panels and roof panels are completely production line built and finished at the plant before shipment, the exception being the roofing on roof panels, which is supplied in rolls and applied when the roof panels are assembled and bolted in place in the field.

Side wall panels, size 8'-0" wide x 7'-2 1/2" high have studding placed two inches or flat way to provide maximum floor space and to minimize cubage in shipping without impairing strength. Each side wall panel provides screened window with upper and lower plastic glass covered sash operated from within the building, providing ventilation as desired.

Door panel, front and rear, is 4' x 7'-2 1/2" with door, prefinished.

Gable panels are 10' x 4'-7 1/2" completely assembled at the plant.

Roof panels are 4' x 11' assembled in panels built up at the mill. 55 lb. smooth surface roofing is furnished with nails, cement and instructions for applying in the field after panels are bolted in place.

Shipments can be started within an outside span of ten days time from manufacturing jigs set up ready for production. Shipments F.O.B. The Aladdin Company plant at Bay City, Michigan or F.O.B. The Aladdin Company plant at Portland, Oregon.

Aladdin Igloo Type Barracks

In the official Navy test, Aladdin Igloo Barracks withstood a roof pressure of 83 pounds per square foot before failure as against 24 pounds pressure on a similar roof of standard metal. Thus, it has been fully approved by Navy Officials.

Flywood or pressed wood, hard board covering on both exterior and interior are interlined with blanket insulation. Can be shipped in assembled sections, nested, or all parts cut to size to be assembled in panels at destination, which minimizes cubage for export. Floor panels, to minimize shipping cubage, are furnished readi-cut for quick assembly in the field. 20' x 48' size can be increased to any desired length in multiples of 4'.

Two types are offered—Arctic and Tropic. For warmer zones, a porch roof extension of 4' is provided for both front and rear in addition to the 20' x 48' size of the enclosed structure. No projection for Northerly types. Both Arctic and Tropic types have all openings screened and windows of plastic glass. Partitions can be inserted as desired. Shipments F.O.B. The Aladdin Company plant at Bay City, Michigan or F.O.B. The Aladdin Company plant at Portland, Oregon.



Prefabricated Mobile Depot Groups — CCC Type

fully demountable



Standard 20' x 100' 7 1/4" Aladdin Barracks

A wide variety of requirements can be readily fulfilled with Aladdin Prefabricated Mobile Depot Groups. Space needs for most purposes will be found ample in the 20' x 100'-7 1/4" size. However, should space needs require additional capacity, the structure lengths can be increased as desired in multiples of 5'. Service needs too can be fulfilled with the installation of partitions as desired to accommodate any purpose. To meet specific requirements, three types of construction are offered, namely:

Single (S) construction, floor panels with joist and finish flooring side wall panels for covered with drop siding, and roof panels, covered with one inch roof sheathing at the plant and a 55 lb. smooth surface roofing in rolls furnished to be applied in the field.

Double (D) construction, provides 1/2-inch rigid insulation board under finish floor or floor panels, half inch insulation board on side wall panels under the siding, giving double thickness wall, also under roof sheathing on roof panels giving double thickness for the roof.

Triple (T) construction, which is double (D) construction as described in the foregoing, provides extra half inch insulation board furnished in standard sizes to be applied on inside wall and roof panels in the field after all panels are set up and bolted in place.

Structure is assembled from standard prefabricated production built panels. Side wall panels, both solid wall or window panels, are 5' wide x 7'-3 1/4" high. Size of sash in window panels is 2'-4" x 2'-11" hung with hinges at bottom to swing in. Galvanized wire cloth screen is nailed to outside openings and finished with a 1/2" x 1 1/2" finish mold at the mill. Front wall panels are size 7'-6" x 7'-3 1/4" high with 2'-4" x 2'-11" windows hinged at bottom to swing in, with screens attached to outside opening, with 1/2" x 1 1/2" finish mold applied at the mill. Roof panels are size 5' x 12' shipped ready to be bolted in place in the field. 55 lb. smooth surface roofing, with sufficient nails, cement and instructions are furnished in rolls to be applied in the field after panels are set in place and bolted. To minimize cubage for export, joists and flooring materials can be ready-cut to size, ready for easy, quick assembly into panels in the field. Front and rear door panels are 5' wide x 7'-3 1/4" high with doors pre-fit and shipped separately. Gable panels are 10' wide x 4'-7 1/4" with window size 2'-4" x 2'-11", hinged at bottom with transom chain and transom check. Shipped F.O.B. The Aladdin Company plant at Bay City, Michigan or F.O.B. The Aladdin Company plant at Portland, Oregon.



Complete Production Jigs for immediate production line manufacture are ready in two Aladdin plants, Bay City, Michigan and Portland, Oregon.

Building Schedule

CCC TYPE CONSTRUCTION

The following list is typical for housing 1000 enlisted men and 110 officers using standard designs of CCC portable troop housing:

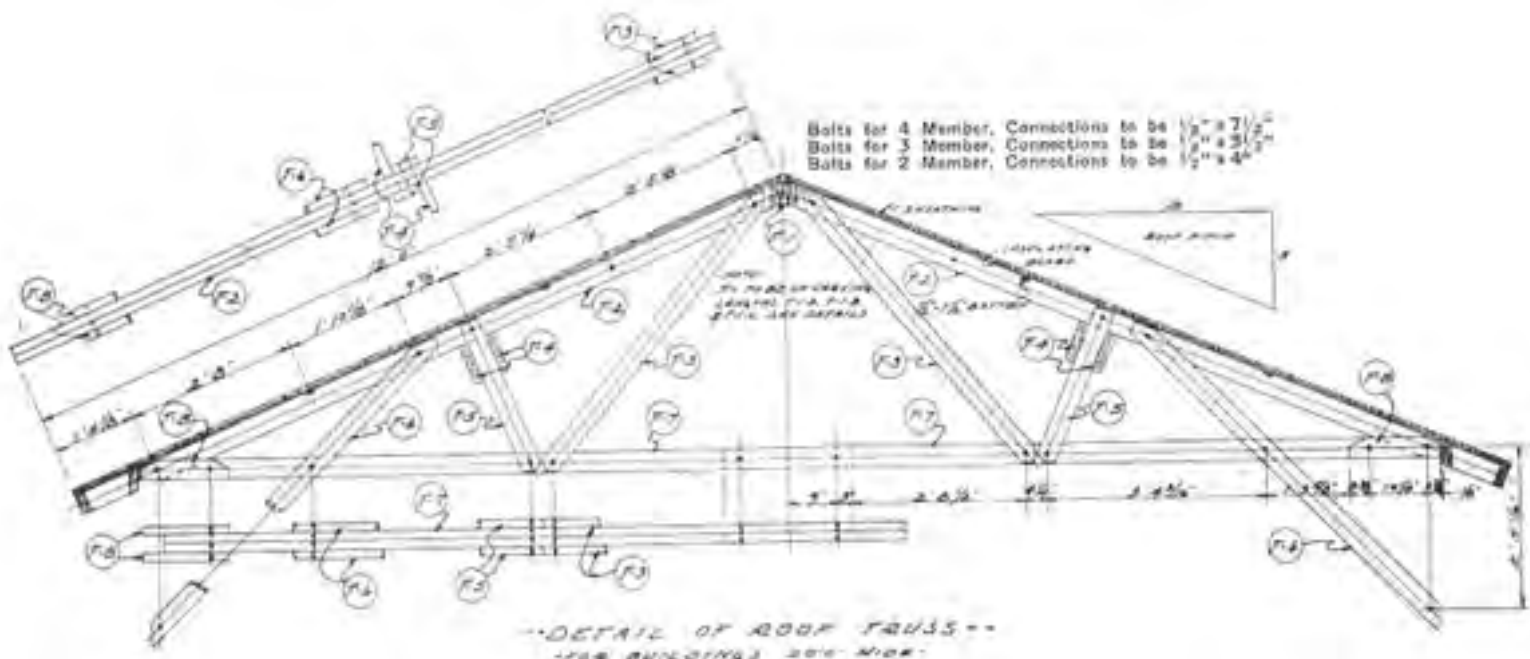
- | | |
|---|--------------------------------------|
| 2 Officers Quarters 20'x80' | 5 Latrines 20' x 25' |
| 1 Enlisted Men Mess Hall, Type A—70' x 100' | 1 Recreation Building 20' x 110' |
| 18 Standard Barracks 20' x 120' | 1 Headquarters and Storage 20' x 90' |

The following list of utility buildings would be required in addition to the above:

- | | |
|-----------------------------------|------------------------|
| 1 Headquarters Building 20' x 90' | 1 Dispensary 20' x 40' |
| 1 Fire house 20' x 80' | 1 Commissary 20' x 90' |
| 1 Guard house 20' x 40' | 1 Utility 30' x 30' |
| 1 Post Exchange 20' x 90' | 1 Garage 24' x 60' |

Hospital Unit required for 110 officers and 1000 enlisted men as follows:

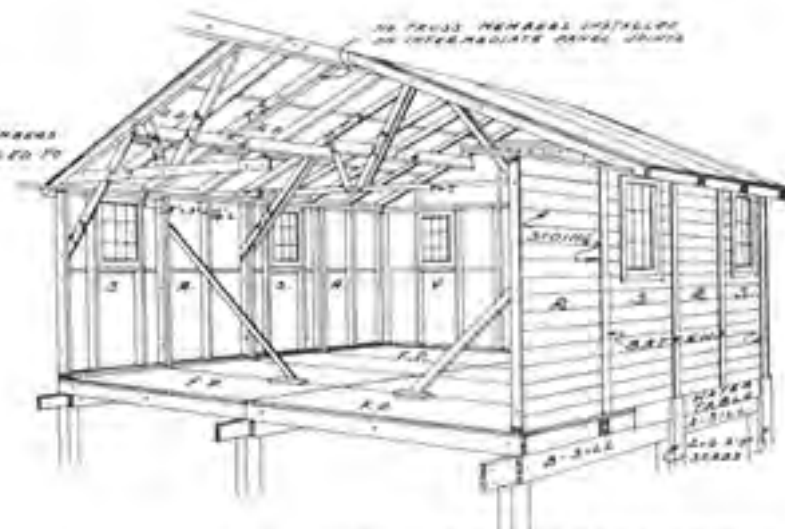
- | | |
|---|------------------------------|
| 1 Hospital Administration Bldg. 20' x 40' | 1 Hospital Mess 70' x 110' |
| 2 Wards 20' x 120' | 1 Nurses Quarters 20' x 80' |
| 1 Surgery and Supply 20' x 90' | 1 Bath and Latrine 20' x 25' |



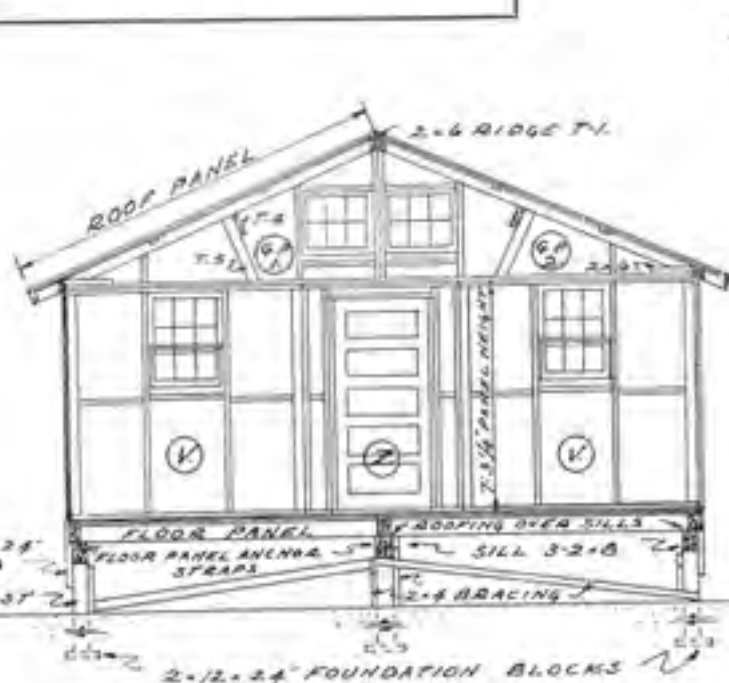
Approved Adaptable Uses

Aladdin Prefabricated Mobile Depot Groups adapted for use as follows:

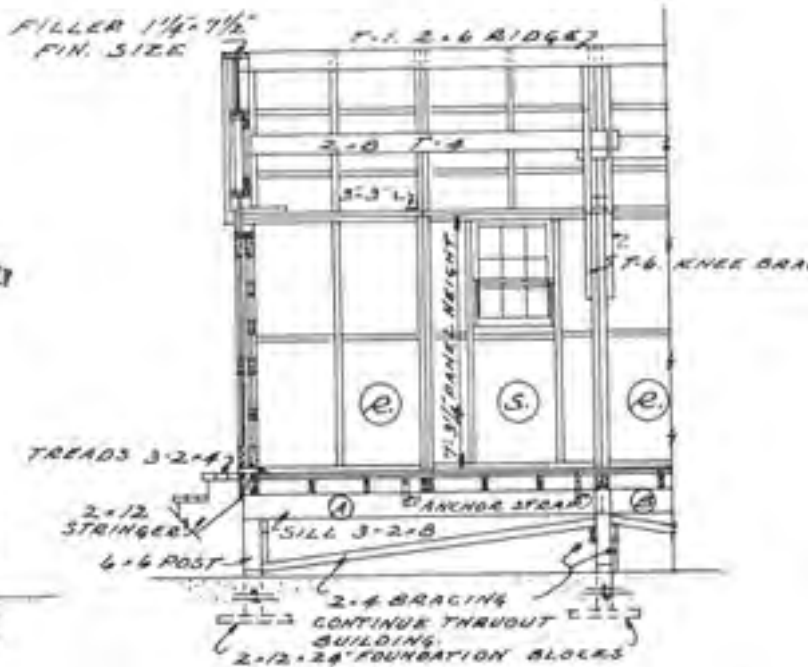
Officer Quarters	Post Exchange
Barracks, E. M.	Q. M. Warehouse
Hospital Wards	Signal Warehouse
Officers Mess	Commissary
Officers Bath & Latrine	Ordnance Warehouse
E. M. Bath & Latrine	Gas Station
E. M. Mess	Paint, Oil & Dope
Supply	Guard House
Administration	Operations
Recreation	Utility Shop
File House	Garage



SECTION SHOWING CONTINUATION OF ROOF PANELS & TRUSSES EXTERIOR SCAB & WATER TABLE.



---CROSS SECTION---



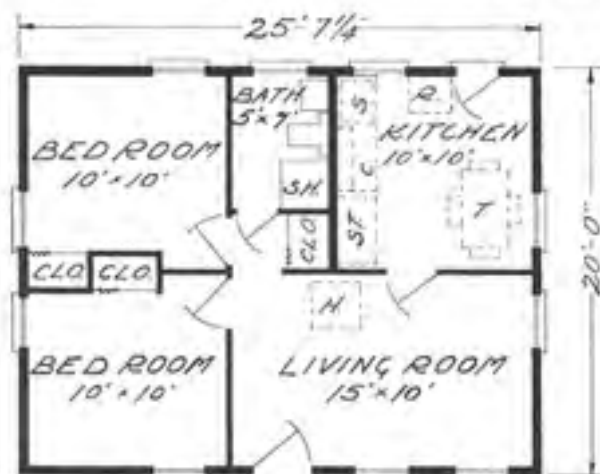
---LONGITUDINAL SECTION---

Aladdin 5-Room Prefabricated Home, 20 x 25 ft.

Note: A 2-family home, each with three bedrooms, is available from these same plans by adding a 10-foot "connector." 2-bed-room section to join two of these units alongside of each other. Complete information will be furnished on request.



This Aladdin Defense Home is a clean, trim, well balanced house containing living room, two bedrooms, bath, kitchen and three closets. Rooms are well proportioned, conveniently arranged, with ample lighting, ventilation and wall space. The design provides for plumbing for kitchen and



bath to be piped in one wall, thus lowering cost and minimizing time of installation. Provision in kitchen is made for cabinet work; sink and stove on one wall permitting placing dinette table and chairs on opposite side of the room. Space heater is located centrally between hall and kitchen doors.

Floor panels, are size 5' x 10', side wall panels are size 5' x 7'-3/4". Gable panels are 10' x 4'-7 1/4". Roof panels are size 5' x 12' with 55 lb. smooth surface roll roofing furnished in rolls, nails and cement, to be applied in the field after roof panels are set in place and bolted. Windows in sidewalls are 24" x 20" check rail with the exception of rear kitchen and bathroom windows, which are 24" x 14" check rail.

All materials for ceiling joists and partitions are furnished readi-cut with one-half inch insulation board provided for ceiling and side walls to be erected in the field.

Side wall panels furnished with 1/2-inch insulation board under drop siding, with 1/2-inch insulation board interior lining to be applied in the field. Read-cut materials for partition and ceiling joists are furnished bundled ready to be assembled in the field. Shipped F.O.B. The Aladdin Company plant in Bay City, Michigan or F.O.B. The Aladdin Company plant at Portland, Oregon.

READI-CUT MATERIALS SAVE

time and are easy to handle and transport. Skilled labor is not required as our instructions and plans list and show in position every piece of material entering into the construction of each building, thus enabling unskilled labor to erect the buildings with ease.



Aladdin 5-Man Hut Style "A"

The Aladdin Five-Man Hut Style "A" is produced from production line jigs to provide low cost, rapidly erected accommodations. Floor panels are size 4' x 16'. Side wall panels are 8' x 8' and roof panels size 4' x 9'. Floor panels are covered with 4" or 6" tongued and grooved flooring. Side walls on exterior are covered with drop siding and roof panels are formed of roof rafters covered with 1" roof sheathing, which, when set in place and bolted, are covered with 55 lb. smooth surface roofing furnished in rolls with sufficient nails and cement to be applied in the field.

Aladdin Multiple Unit Apartment Building



The Aladdin Apartment Building is a distinct service in providing living accommodations for various size families quickly and at low cost. A two family unit is shown here providing one apartment with three bedrooms, with a living room convertible into a fourth bedroom, if needed, also kitchen and bath with plentiful closet space (apartment shown at left of floor plan) and a one bedroom apartment with living room convertible into a second bedroom if necessary, also kitchen, bath and ample closet space. Should it be more practical for established needs, plans are readily changeable to provide each of these apartments with two bedrooms. All that will be necessary is to eliminate the door of the front right bedroom, shown in the left apartment on the floor plan and place it on the opposite wall to open into the apartment shown to the right of floor plan opening into living room.

This plan can be furnished in any size units, one bedroom, two bedroom or three bedroom, with an auxiliary fourth bedroom available, by converting the living room when necessary.

Present plans provide only for materials ready-cut to size and assembled or built in the field. However, by altering structural size to accommodate prefabrication standard panel units, apartments can be prefabricated if necessary.

Structure is built on either post or solid wall foundation in single or double construction. Single construction consists of finish floors laid over floor joists with drop siding for side walls applied directly to studding. Double construction consists

of 1/2-inch rigid insulation sub-floor and finish floor with building paper between on outside walls, outside wall sheathing and bevel siding with building paper between on outside walls, one-half inch insulation board furnished to line inside walls and partitions. Roof consists of roof sheathing on roof rafters covered with slate surfaced roll roofing. Insulation for ceiling and side walls is optional and can be included in quotations, if desired. Plans are ready for prompt production and shipment of any number of family units.



ANY CIVILIAN OR TROOP HOUSING DESIGNS CAN BE SUPPLIED IN EITHER PREFABRICATED PANELS OR WITH READI-CUT MATERIALS

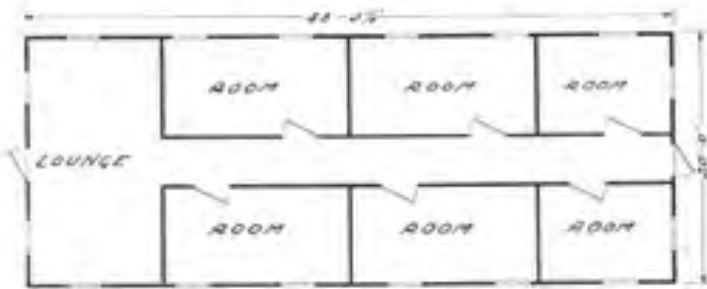
Aladdin 5-Man Hut Plywood Type

Designed for tropic temperatures, Style C is sturdily built and fully demountable with a salvage value of over 95%. Screened ventilating openings on each side are provided with shutters for shade as well as protection, when closed against inclement weather. One casement window is located in rear wall. The roof is built double having 3/4-inch fibre board, asphalt impregnated to the weather. 1/2-inch insulation board is supplied for under side of rafters. This provides 4 inch dead air space insulation against the hot sun. Screened gable louvers with inside shutter add to ventilation factors. Style—C.

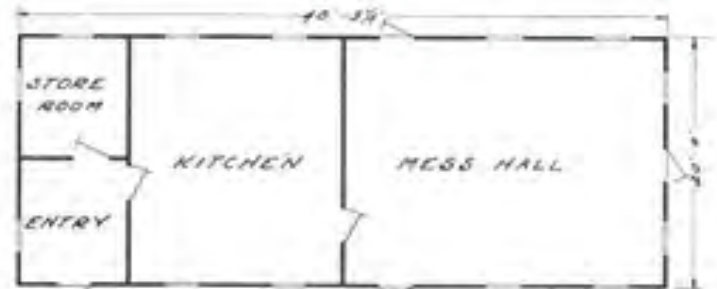


ALADDIN TROOP HOUSING

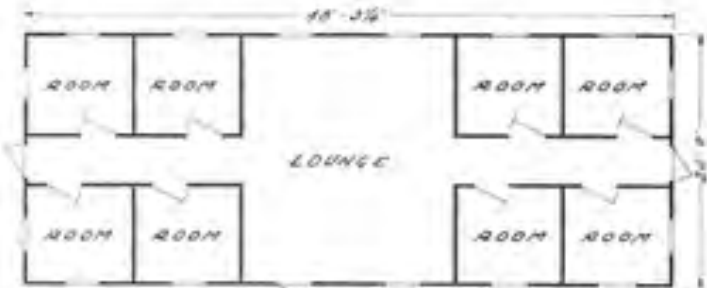
BUILDINGS FOR EVERY PURPOSE FURNISHED IN ANY SIZE
SEE PAGE 3



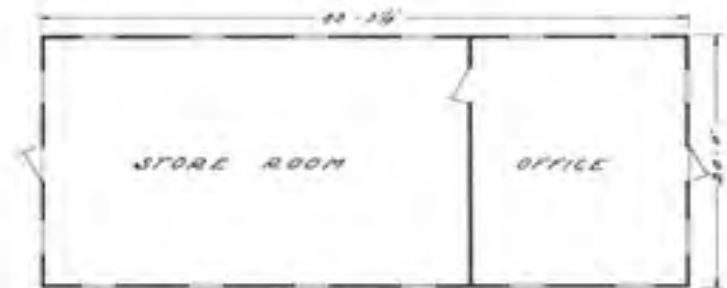
OFFICERS QUARTERS



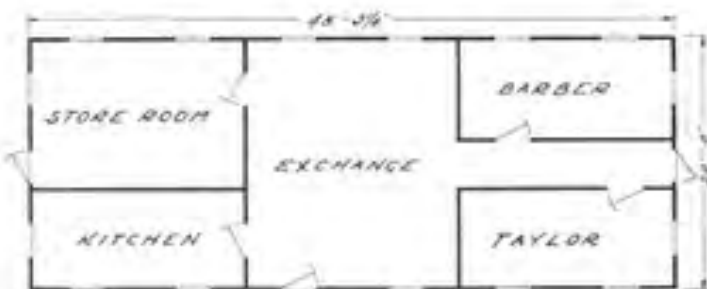
OFFICERS MESS



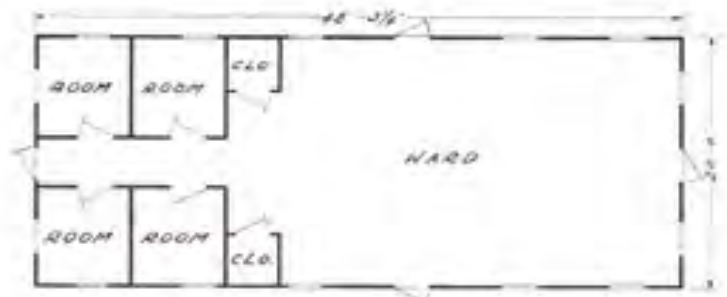
TECHNICAL SERVICE QUARTERS



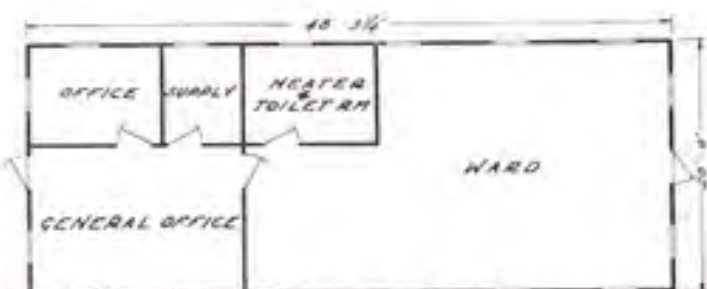
HEADQUARTERS AND STOREHOUSE



POST EXCHANGE



HOSPITAL WARD



HOSPITAL DISPENSARY



LATRINE

THE ALADDIN COMPANY

OFFICES AND MILLS
BAY CITY, MICH.

GENERAL OFFICES
BAY CITY, MICHIGAN

OFFICES AND MILLS
PORTLAND, OREGON