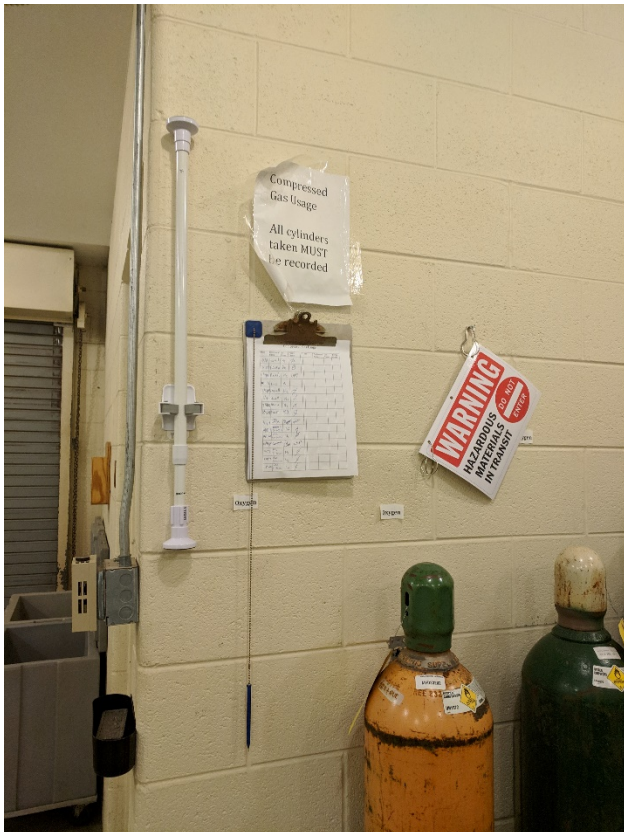


Appendix U: Elevator Transport of Cryogenic and Hazardous Materials

People should never ride in an elevator with a container of liquid nitrogen or another cryogenic material. If the elevator becomes stuck, the expanding gas from the container can displace the oxygen inside the elevator, leading to asphyxiation of the passenger. Toxic inhalation chemicals can also be deadly if a release occurs inside an elevator. Follow the procedure described below and use the provided signage when transporting cryogenic materials or toxic inhalation hazard chemicals. Never ride or allow others to ride in an elevator with cryogenics or toxic inhalation hazard chemicals. Contact the Office of Laboratory and Field Safety for more information.

1. Find a companion to assist you by receiving the elevator cargo at its destination. Transporting hazardous materials with the elevator requires two people. **Do not attempt to run up/down the stairwell to catch the elevator by yourself.** Position your companion at the elevator destination prior to loading your cargo.
2. When you are ready to transport your cargo, obtain the hazardous materials transport signage from the compressed gas storage area. Complete the transporter information section with the provided dry erase marker and attach both signs to the tension rod with the hooks.

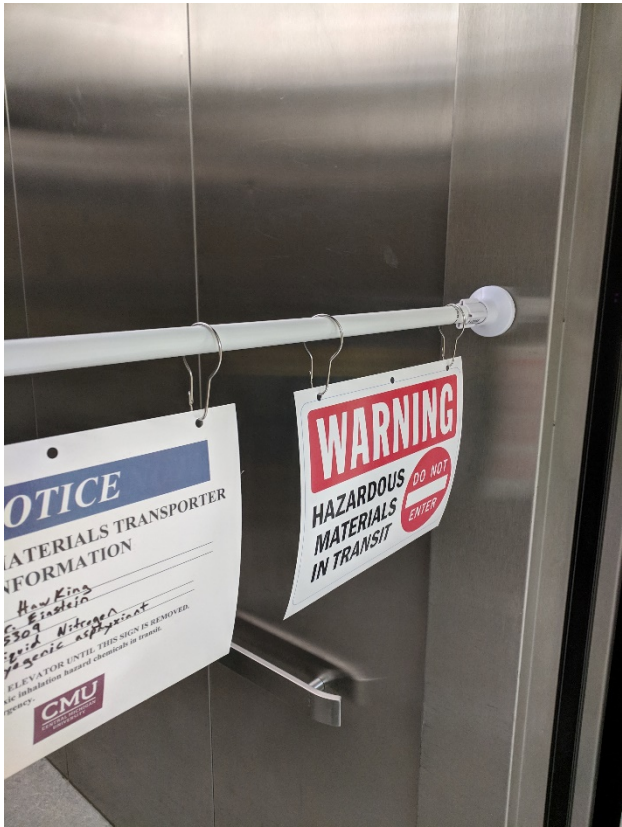
Dow Science Building Location



Biosciences Building Location



3. You can now load your cargo into the elevator. Keep the elevator door open while you post the signage across the doorway by using the tension rod. Take care not to block the door with the rod. Select your destination floor and exit the elevator. Allow the doors to close and the elevator will depart.



4. Your companion will receive the elevator at the destination and remove the signage and cargo. Confirm with the recipient that the cargo was received. Return the signage to the storage room when finished.