

# Aladdin Homes

*Built in a Day*  
Catalog No. 31

## The Aladdin Company

W. J. Sovereign - - Pres.  
O. E. Sovereign,  
Sec., Treas., Gen. Mgr.

General Offices  
Bay City Michigan

General Offices  
Southern Division  
Hattiesburg, Mississippi

**IMPORTANT:**  
Read the following introductory  
pages carefully

Cable Address: "Aladdin"  
Western Union Code

Canadian Branch:  
Canadian Aladdin Co., Ltd.  
C. P. R. Bldg., Toronto, Canada





# The Aladdin House at a Glance

- Center sill foundation timber cut to fit.  
Joists, studding, rafters, and ceiling joists all accurately cut to fit.  
Sheathing lumber cut to fit. Sub-floors cut to fit.  
Joist bridging cut to fit.  
Building paper for all dwellings for side walls and floor linings.  
All bevel siding, every single piece guaranteed to be cut and to fit accurately.  
Shingles or siding for the side walls, whichever preferred, will be furnished for any house at no additional cost.  
Outside finishing lumber, all cut to fit.  
Flooring, cut to fit. Roof sheathing, cut to fit.  
Porch timbers, joists, flooring, columns, railing and posts, roof sheathing, all and every piece cut to fit except porch rail, uncut.  
Extra Star-A-Star Cedar Shingles or prepared roofing.  
Outside steps of all dwellings cut and shaped to fit.  
All doors mortised and with frame and trim inside and out. Windows and frame, sash, and glass, and trim inside and out.  
Moulded base board for rooms, not cut to fit.  
Weather moulding for trimming all outside doors and windows, cut to fit. Crown mould, cove mould and quarter round mould, etc.  
Stairways, treads, risers, stringers, newel posts, balusters, mouldings, etc., for all two-story houses cut to fit.  
All hardware, Mortise locks, knobs, and hinges, tin flashing, hip shingles, galvanized ridge roll, window hardware, etc.  
Nails of proper size for entire house.  
Paint for two coats outside body and trim (any colors), putty, oils, stains, and varnishes.  
Lath and plaster and grounds for lining entire house.  
Complete instructions and illustrations for doing all the work.  
(Aladdin houses are always shipped under the freight classification of lumber with hardware, etc., listed under their respective classifications. See page 8.)  
The floor plan of any house in this catalog will be reversed without extra charge.

## TERMS

**T**WENTY-FIVE per cent. cash with order, balance C. O. D. This is not meant as a reflection on your financial standing, but is an invariable rule. A discount of 5% is allowed from list prices where full amount is sent with order. For your convenience, we have shown the list price and the net price with each house on price list on inside front cover catalog.

An illustration: List price of house, \$1,000, 25% cash with order—\$250, balance \$750 C. O. D., or 5% discount for sending full amount—\$50, \$50 from \$1,000—\$950, if all sent with order. You save \$50 by sending full amount with order on a \$1,000 house, other houses same in proportion. Cash discount is often large enough to pay freight charges.

## THE ALADDIN COMPANY

General Offices, Bay City, Michigan

**REFERENCES:** Any Bank in the United States, Bradstreet's or Dun's Commercial Agencies, First National Bank of Bay City, Michigan; The Chemical National Bank, New York City; The First National Bank of Chicago, and The First and Old Detroit National Bank of Detroit, First National Bank of Hattiesburg, Mississippi, Bank of Hattiesburg, Mississippi, any city official or other citizen of Bay City, and our customers.

Copyright, 1918, by The Aladdin Company, Bay City, Michigan.

Note.—This Copyright protects each and every part of this book—type matter, illustrations, and floor plans. Use by any one without specific permission is expressly forbidden. Anyone attempting to build or copy Aladdin houses with material not furnished by this company will be swiftly prosecuted to the full extent of the law.



# The ALADDIN Plan

## This is the Fourteenth Year of Aladdin Success

**A**LADDIN Read-Cut Houses—The Aladdin System of Construction—may be new to you, but the system was planned and put in operation fourteen years ago. Its merits, its wonderful simplicity, was immediately recognized by the American public. The result is that practically every year the history of the business shows a doubling and trebling in the volume and number of houses sold. You know that this wonderful growth would be impossible for any manufacturing institution, or any business house, unless customers became friends—unless real service was rendered—honest value, square business methods, and integrity prevailed.

*The United States Government has used The Aladdin Company's standard read-cut specifications in advertising for bids for the construction of houses on government projects. This is not only official endorsement of the Read-Cut system of construction, but recognition of the merit of The Aladdin Company's specifications.*

### Integrity of the Aladdin Policy

Integrity means *moral soundness*; it means *honesty*; it means *freedom from corrupting influence or practice*; it means *strictness in the fulfillment of contracts, uprightness, square dealing*. The Aladdin policy of doing business endeavors to live up to the strictest meaning of *Integrity*. The customer must be well served—must be satisfied—must be pleased—*must be a friend*. The *Golden Rule* must govern every transaction. You who read this are entitled to know the truth of the above statement. Well, then, demand of us that proof in whatever way you wish. Shall we give you bankers, congressmen, postmasters, city, State or National Government officials, or, better than all, shall we refer you to *customers who have tested our integrity*, customers in your own neighborhood? The proof is yours for the asking.

### The Aladdin System of Construction is Built on This Principle:

*Modern power-driven machines can do BETTER work at a lower cost than hand labor. Then every bit of work that CAN be done by machine SHOULD be so done.* The steel worker with a little hack-saw trying to cut and fit the steel girders of the modern skyscraper should be no more out of place than the modern carpenter cutting sills, joists, and rafters. The skyscraper framework is cut to fit by machines in the steel mills, marked and numbered ready for erection. The lumber in the Aladdin house is cut to fit by machines in the Aladdin mills, marked and numbered ready for erection. The steel system is twenty-six years old—the Aladdin system fourteen years old.

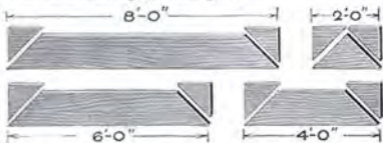


# Twenty feet of lumber from a sixteen foot board - How it's done

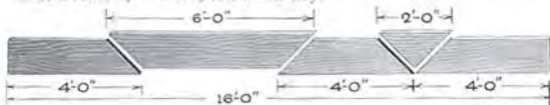


To cut the sheathing for this gable:

The carpenter usually takes an eight-foot board, a six-foot board, a four-foot board and a two-foot board and cuts them this way:



The carpenter requires twenty feet of lumber for the job. Aladdin takes a sixteen-foot board, cuts it this way:



and gets twenty feet of lumber at the cost of sixteen feet—and YOU get the saving.

**T**HE wonderful money-saving results of the Aladdin Read-Cut System will be understood after reading this page. Nowhere in the history of manufacturing or building since history began can be found an example equal to that which is a part of every day's work in the Aladdin designing rooms and in the Aladdin mills.



Machinery of the Most Modern types are used to manufacture Aladdin Homes. This machine houses and fits a staircase in less than five minutes.

*Think of taking a six-inch board sixteen feet long and getting twenty feet of six-inch board out of it!*

*Think of applying this system of saving throughout all the lumber used in building your home!*

*Think of your own good money it saves!*

To eliminate waste by scientific planning, designing, and cutting of lumber is to save your money from the waste pile.

W. J. Sovereign, president of The Aladdin Company, conceived this tremendous thought, originated, perfected, and established the system.

# WASTE- and what it means to you

*"Only Thirty-five per cent of the original tree emerges in the form of a building."*—SATURDAY EVENING POST.

**S**PECIAL investigation of waste of lumber in the construction of dwellings resulted in the following statement by a writer in the *Retail Lumberman*:

*"A safe estimate of good lumber wasted in course of construction is 25%."*

These two bare statements are quoted from such unquestionable sources to give special weight to our very conservative statement:

*You will pay for 18% waste when you build the old way.*

Eighteen per cent of your money will pay for material you don't get—eighteen dollars out of every hundred spent in your home—wasted.

When this statement was first made by us it was ridiculed by the lumbermen. The passing years have wrought changes in their ideas until now, when pinned down, they will admit that it is conservative.

*We have reduced the item of waste to approximately 2%.*

The architect, in designing a house seldom considers the subject of cutting material to waste. He lays out the dimensions of the house, places windows, doors, etc., without any thought of how the material will cut. The contractor orders so many thousand feet of siding, of flooring, of 2 x 4, of 2 x 6, etc., without any thought as to the utilization of mill-run lengths. You, of course, know that sawmills cut logs in certain lengths, 10 feet, 12 feet, 14 feet and 16 feet, and it comes through the planing mill in those same lengths. It also comes to the contractor in the same lengths. When the carpenter cuts the siding to fit between two windows, the windows may be 10 feet 1 inch apart. He has to take 14 pieces of siding each 12 feet long and cut each one of them 10 feet 1 inch, wasting 1 foot 11 inches, or about 18% of good lumber absolutely wasted. The principle is the same throughout the entire house.

This waste is eliminated by the Aladdin designers and the Aladdin Read-Cut system.

Our buyers go actually into the woods, confer with the owners and cutters of the timber and buy the right lengths that will come out of the woods, through the saw-mills and into our own mills in the right lengths. We don't take raw material in lengths and sizes as it chances to come, but as it *should come to conform to our standards*. In many instances the cross-cut saw is in the hands of the woodsman is actually directed by our needs so that no other saw is touched to the lumber at any time.

Each one of our special gang cut-off saws is designed to cut 50,000 feet of studding and joists every day. It does the work that would require a veritable army of carpenters to do, and it does it with the wonderful perfection and accuracy of high-class machinery.

You can easily imagine the dollars saved to you in the cost of your home, accomplished by this remarkable system of saving waste that reaches into the very forest and untiringly searches every item, every operation, every movement to cut out and to eliminate the waste of your money.

When the architect overlooks something or makes a mistake, you pay the bill; when the contractor overlooks something, or makes a mistake, you pay for that, too; and when the carpenter uses poor judgment, overlooks something or makes a mistake, you are the one to stand the cost of his mistake. It's always your money—not the other's.

The more brains, the more organization, the more counsel given to any matter, the less chance for mistakes, and the Aladdin Board of Seven, described on another page, is your safeguard.

"Big Ben": The most wonderful woodworking machine ever built. It does the work of 100 men every day.



# From the Pyramids to the Woolworth Building



**T**O him who says the Redi-Cut System is not possible or practicable, point to the Pyramids of Egypt, refer to Solomon's Temple as described in the Bible, or inspect Washington Monument, or the 57-story Woolworth Building in New York City. You will find that each was prepared, erected and completed by the Redi-Cut System. But it remained for W. J. Sovereign to first apply the system to *your* benefit in the building of a home. And thousands of American families scattered over this broad land will testify to its economy and practical success.

The pyramids aren't portable, the Woolworth Building is not portable, *nor are Aladdin houses portable.*

If you attempted to tear apart, or dissect an Aladdin house, the most expert contractor could not tell it from any other first class frame dwelling because *there is no difference.*

At the bottom of this page is a striking illustration of the Redi-Cut System of construction successfully used for twenty-five years in steel-building construction. Note the "studding" for the two side walls, all in position with the "joist hanger" placed. These studs are about thirty feet high. In the foreground are shown some of the rafters, with the marks and numbers indicating their respective positions—"6201-16-Col-22." There is no fitting or cutting on the ground. The sawing, measuring, and fitting were done in the steel mills in Pittsburgh. How can they

do this work? Why, the structural engineers know how. It's their particular business. It's their lifework. So it is with Aladdin Redi-Cut houses. The same *principles govern each job. It's the same system.*



Redi-Cut System of Construction.



# The Lumber We Use



**E**VERY piece of framing and sheathing lumber in every Aladdin house has been carefully selected from the highest grade. It is carefully inspected by experienced men, and if not up to a high standard is not used. This is an extremely important point and you should consider it carefully. Our facilities for buying high grades are unsurpassed by any manufacturer of lumber in the country. This means much to the purchaser—to know the quality of all materials used, to know that the lumber and timber are the best; that it is well seasoned, sound, and of first quality throughout.

All the interior finish, doors, etc., are put through three separate sanding machines, making a beautiful finish.

Scores have written, "It would have been impossible to obtain locally, finish at any price to equal that furnished in my Aladdin." [Such names and addresses gladly furnished on request.]

## What You Get When You Buy an Aladdin House

Material that is unsurpassed by any other concern in the country, and it is not only perfectly cut to fit, but cut with a view of saving all waste, which means a direct saving to you. But the saving does not stop there. We mortise all doors to receive the lock sets, all interior finish sanded, and flooring steel scraped.

Bear in mind that when you buy an Aladdin house that the foundation sill, floor joists, the sub flooring, the regular tongued and grooved flooring, the studding, the wall sheathing, the siding, the window and door frames, the outside finish, the rafters, the roof sheathing, the steps, the stairs, all porch framing, are *ready-cut*, ready to nail into place. Is it any wonder that we can save you such a big percentage of your labor cost? And then again, the enormous quantities in which we buy our building paper, lock sets, double acting door hinges, window weights, nails, paints, varnishes, oils, stains, hip shingles, tin flashing, etc., sets them down at your door for less than a hardware dealer can buy them from the jobber.

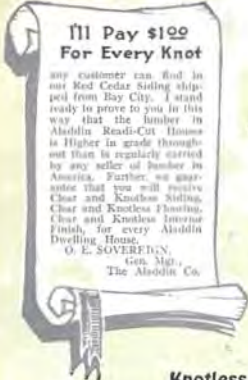
## Direct from the Forest to the Home

Stop and think what that means—"direct from the forest to you." It means that you are buying your house at the same price it costs if you lived right here—right where most of the timber grows—to build a house. It means that your house costs you no more than if you could go direct to a mill at the edge of the forest and buy the timber and lumber. It means that you are doing that very thing—buying it from the mill at the edge of the forest. It means that you are not paying a profit to the big jobber, a profit to the big wholesaler, and a profit to the local lumber dealer at your house, and, on top of all that, the freight for shipping the lumber to the several places where each does business. Another thing, each of the above lumber dealers, or middlemen,

sells on credit. They all add from 5% to 10% to make up for bad accounts — losses which are charged up in your bill. We sell for cash only—we have no bad accounts, and are, therefore, not obliged to add enough charges into your bill to make up for the man who doesn't pay.



Loading Yard of the ALADDIN Mill Railroad that Transports Lumber from the Yards to the Mill



## I'll Pay \$1.00 For Every Knot

any customer can find in our Red Cedar Siding shipped from Bay City. I stand ready to prove to you in this way that the lumber in Aladdin Read-Cut Houses is Higher in grade throughout than is regularly carried by any seller of lumber in America. Further, we guarantee that you will receive Clear and Knotless Siding, Clear and Knotless Flooring, Clear and Knotless Interior Finish, for every Aladdin Dwelling House.

O. E. SOVEREIGN,  
Gen. Mgr.,  
The Aladdin Co.

## Aladdin's Famous "Dollar-A-Knot" Guaranty

**A** NEW standard of lumber quality has been given to the world by Aladdin's famous "Dollar-A-Knot" Guaranty.

The "Good-Enough" lumber grades, the "Anything-will-do" grades and the multitudes of evasive substitutions for Clear Knotless lumber have been shown up.

You cannot be expected to fathom the intricacies of lumber associations' manual of grading rules; how many circles, hearts, rings and barks make a good log, nor how many knots, spots, pitch pockets or worm holes there will be to a board.

There are none of these defects in your dollar, and there should be none in what you trade your dollar for.

## Knotless Means Just What It Says

"A-Dollar-A-Knot!" Could any guaranty be plainer, or more forceful, or more effective? You know a knot when you see it, and you know it makes a board less valuable. And when we guarantee

Aladdin lumber to be knotless or guarantee "A-Dollar-A-Knot" for our red cedar siding, you *know* that your lumber is going to be the very *highest* grade taken from the forest.

## "Hunting for Pieces"—Contractor

Of course, the Aladdin Read-Cut System receives adverse criticism from some contractors, lumber dealers, and others. This criticism comes chiefly from those who have had no experience with, or knowledge of, Aladdin houses. Self-interest, here prompted by loss of profit, begets the antagonism.

One of the most amusing remarks made is that the builder of an Aladdin house will lose as much time hunting out his

material and finding the right piece as he will save by the Read-Cut System. Of course this remark on the face of it is an admission that time is saved by the Aladdin System. However, any thought about time lost in hunting for pieces is immediately dispelled when you see the simple system of laying out materials that accompanies the instructions for every house.

## About Freight

One of the big advantages in buying an Aladdin house is the big amount you save on the item of freight alone. Your local dealer very rarely buys his lumber from the forest. He gets it shipped to him from his wholesaler at some near-by distributing point. The wholesaler usually gets it from some other middleman, who gets it from the sawmill. Every time the lumber is moved in its zigzag course through the middlemen, the freight charges

pile up and your local dealer must add them all into the price you pay. When your Aladdin house reaches you the freight is the very lowest that is possible to move the goods to your station. We use great care in quoting the freight and great care in routing it the most direct way. It costs no more to pay the freight upon arrival of your car than to send us the money with which to prepay it.



## Aladdin Houses Sold by the Golden Rule

**T**EN years of square dealing with our customers earned for us the expression, "I know that you do business very much on the *Golden Rule* basis."

This came in the mail voluntarily from a customer who had tested our business principles over a period of several years, and who has reason to know whereof he speaks. This principle has been governing the work of this organization constantly, and it is surely gratifying to have it come to us in this way.

We have, therefore, adopted the expression and know that we have a real right to its use—as you will know when you join the big Aladdin family.

### Aladdin Lath and Plaster

Aladdin plaster is the highest grade manufactured and never fails to give the best results: a hard, smooth and lasting wall, is quick drying and impervious to moisture.

It is an improved wood fibre patent plaster. This does away with the work of preparing plaster through the old fashioned method. It not only shortens the labor but when the wall is finished it is a great deal more durable and less liable to pit. It also effects another saving, as the time required to set and dry out is much

shorter, so that the interior finish can be put on without the usual delay.

For quick work or for use in cold weather it is preferable to any other plaster, as it will set and harden much more rapidly.

### Painting

With every Aladdin house, paint of any color for two coats outside is furnished, oils, stains and varnishes or paints for inside. You will be sent, on request, our large color card of many beautiful colors. You may select as many different colors as you wish to choose for body, trimmings,

porch floor, porch ceiling, window sash, etc., and you may have either paint, oil and varnish, stain and varnish, or stain and wax, for the interior finish. Where houses are furnished with shingles for the side walls, shingle stain is furnished instead of paint.

### Masonry

Of course, all excavation and masonry work must be done on the ground. No money would be saved by including stone or brick or concrete, for every section of the country produces this material and prices vary but little. We furnish you with the foundation plan and will give you figures on the amount of material re-

quired for whatever kind of foundation material you decide to use—concrete, stone or brick. Fireplaces or chimneys may be built inside or outside and placed wherever desired or may be omitted. The opening for the chimney is not cut, so that the chimney may be omitted or its location changed from wherever it may be shown in our photographs.

### From "The Canada Lumberman"

"Year after year the price of carpenter labor has been advancing, thus making the cost of lumber higher when in position. Framing material will eventually have to come to the building trimmed to length, and I fail to understand why this fact is

not more generally realized. The piece stuff of the future will be furnished to the building ready for position. This thing of cutting and cutting with a hand-saw at the building site until it fits, is too costly."

### The United States Government

has given to The Aladdin Company the right to apply to its product (Aladdin Houses) "*Sold by the Golden Rule.*" It

has given the Company the *Exclusive Right*, backed up by all the patent laws. This recognition we are very proud of.





## The Aladdin Board of Seven

**B**EFORE this Board of Seven comes every Aladdin house for the acid test of perfection. No detail escapes the keen and searching analysis of these experts. The designer must prove his plans to the complete satisfaction of, First, the Master Designer, for accuracy; Second, the Master Builders, for practicability, strength, and structural harmony; Third, Factory Experts, for elimination of waste, standardization of lengths, and economy of costs. Unless the cost of these high-priced men's time could be spread over a hundred or more houses of each design, the cost would be prohibitive. But when they spend two or more hours' valuable time on the design, drawings, and cutting sheets of an Aladdin house, the cost is not all charged to that *one house*, but to *several hundred houses* of that *same design* sold during the year.

No other organization—but the Aladdin organization—can afford a group of high-calibered men such as this Board of Seven, because no other organization in the world produces and sells the vast number of houses and buildings produced by The Aladdin Company.

No other lumber manufacturer ever dared back his lumber with a dollar-a-knot guarantee.

This organization was called upon by the United States Government to co-operate with it in the production of an Ideal Cottage. This Cottage was erected for the Government at the Panama-Pacific International Exposition at San Francisco and was awarded the highest honor and granted a medal.

Could higher recognition be received by any institution than this which was accorded to the Aladdin organization, and to Aladdin houses?

Aladdin's Board of Seven is waiting to help *you*.





Largest conveyor of finished lumber in the world. It does the work of many men and horses.

## This Catalog Our Only Salesman

**W**ITH this catalog, you are able to keep the profits in your own pocket that you would ordinarily pay to your local dealers. Because we do not sell thru dealers, they can't add their four or five hundred dollar profits to the goods you buy from us. You *keep* this money *yourself*.

When your dealer says "Don't buy your lumber out of town," ask him where *he* buys the lumber he wants to sell you.

You see he buys his lumber up here and the only money that stays in your town is the *dealer's profit*. Wouldn't you rather have it in your pocket than in his?

This catalog makes possible this saving—and many others. Pick the house that meets *your* need, and write us. We have lots of interesting things to tell you about it.



# General Specifications

**IMPORTANT NOTE.**—The pictures shown in this catalog are all actual photographs of Aladdin houses sent to us by our customers. There are no fanciful artists' drawings, or photographs of houses not built the Aladdin way. Every house shown in this catalog is erected in Bay City, the home of Aladdin, with just two or three exceptions. This cannot be said of any other similar catalog.

No single organization in the world ever equaled the vast experience of this institution in the designing and manufacturing of houses. The shipment of thousands of houses each year and covering a period of thirteen years at this work means exact knowledge—not theory—on the subject of *material and construction*. The grades of material, the sizes of timbers, their strength, location and installation in the building are determined by well defined engineering standards and our own exact knowledge gained from years of experience.

Below are given general specifications for the construction of Aladdin houses. The exact specifications for the house of your choice are sent you without cost *just as soon as you write us* about the house you like best.

## Quantities

A binding guarantee is given to furnish sufficient material for the completion of each house in accordance with the specifications that follow.

## Condition of Material

The company pledges itself to deliver your house to you without damage in shipment, or in transit. Anything damaged on arrival will be instantly made good at our expense.

## Sizes of Timbers

All sizes of all timbers and lumber will be in accordance with well established engineering and architectural standards of safety and strength.

## Quality of Material

All lumber is guaranteed to be of the highest grades ever marketed anywhere in the world. Every Aladdin house, regardless of size or price, comes under this binding guaranty. (Exception: Sheathing lumber is a fine No. 2 quality, and far better than the accepted standard for sheathing lumber.)

## General Detail Specifications

**Foundation.**—Material for foundation is, of course, not included with Aladdin houses, as concrete, stone or brick can be secured in one locality as cheaply as in another. Complete foundation plans are furnished you with detailed instructions for buying this material and building your foundation.

**Sills.**—Center sill, or sills, are, of course, always furnished to set into your foundation of concrete, stone or brick. All sills are of a size to amply hold all strains and loads in accordance with engineering standards and good practice.

**Joists.**—All framed, dressed and cut to fit. All joists are of a size to amply hold all strains

and loads in accordance with engineering standards and good practice.

**Flooring.**—The flooring used in Aladdin Houses is clear and knotless, tongued and grooved, accurately matched. It has a beautifully figured grain. The face is steel scraped to give the very best appearance.

**Bridgings.**—Wood bridging mitred and cut to length furnished for joists of first and second stories of all dwelling houses.

**Sub-Floors** (for both first and second stories in all Aladdin dwellings).—Inch lumber, dressed, all cut to fit.

**Studding.**—Size, 2x4 inches, all framed, dressed, and cut to fit and placed on 16-inch centers.

**Wall Sheathing.**—Inch lumber, all dressed and cut to fit.



# General Specifications

**Rafters.**—Size, 2x4 and 2x6 inches, all framed, mitred and beveled, dressed and, of course, guaranteed to be perfectly cut to fit.

**Roof Sheathing.**—Inch lumber, all framed, mitred, beveled, dressed and guaranteed to be cut to fit perfectly.

**Shingles (Roof).**—Extra Star A Star Cedar.

**Building Paper.**—Pure White Fibre, tough and dense, for side walls and between sub-floors and finished floors of all Aladdin dwellings.

**Side Walls.**—Dollar-A-Knot Cedar Siding, every piece cut to fit perfectly; perfectly machined surface and without sap, stain or any defects. Holds paint perfectly. Shingles for side walls instead of siding will be furnished for any Aladdin dwellings without extra charge.

**Porch Columns.**—All Colonial columns and square columns are of clear material and built with a lock-joint.

**Outside Finish.**—All outside finish is of clear Yellow Pine or Fir (except 2-inch exposed work, which is always thoroughly sound stock).

**Window and Door Frames.**—Complete, including jams, casings, stops and sills. Built of finest stock, beautifully machined and finished.

**Window Sash.**—Of finest clear fir, I. G. molded, all edges and surfaces sanded and finished with great care.

**Doors.**—Inside doors, size 2 feet 8 inches by 6 feet 8 inches, carefully built of clear stock, all panels selected for attractive, velvety grain and beautifully finished on surfaces and edges. All doors mortised to receive lock sets. (See photographs, page 161.) All front doors of special design with glass in upper part. Double action door between kitchen and dining room.

**Stairs.**—Built from selected clear stock with especial attention to selection of grain. Newel post, molded cap and base, circle tread, steps, risers, railing and balusters carefully finished. All parts of stairs are framed, housed and machined to fit and the whole is carefully boxed by itself to insure arrival in perfect condition.

**Interior Woodwork.**—Baseboard, base shoe door and window casing all selected clear, beautifully machined and ready to receive the oils, stains and varnishes. Casings are of molded and modern back band design.

**Lock Sets.**—Frosted brass. Front door sets have night latch and two-way knobs.

**Hardware.**—Window weights, hinges, nails of all proper sizes, glass, putty, tin flashing.

**Paints.**—The highest priced paint on the market is furnished for all Aladdin homes. It is manufactured of pure white lead, and color.

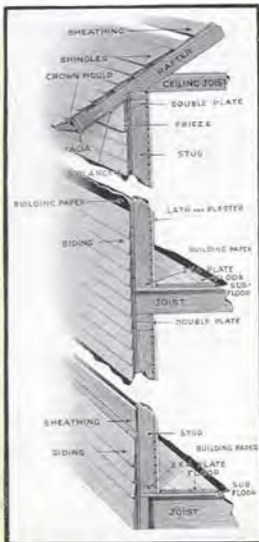
Thirty-two colors to choose from. Your selections may follow your own tastes for body, trim, porch floor, sash, steps, etc. Send for color card.

**Stains.**—The best manufactured, are supplied for inside work. You may secure any effects you desire for interior decoration. Stain and varnish, or oil and varnish if you wish to finish in the natural wood, whichever you prefer. Lattice work under porch floors and shingle stain for roofs not included in prices.

**Lath and Plaster.**—Improved Wood Fibre patent plaster. Grounds furnished for lath and plaster.

**Outside Steps.**—Steps of correct height and width for design of house. All cut to fit. Cellar stairs always included where shown on floor plan. All dimensions on floor plans are given outside to center for customers convenience. Send for foundation plan before starting your foundation.

All of which is covered by our all inclusive guaranty.



# ALADDIN SERVICE

## A COMPLETE HOME OR A COMPLETE CITY



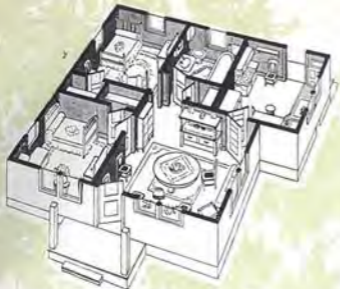
Aladdin Service is equal to any demand made of it. No matter what your requirements are—a single home or a complete city—the Aladdin organization is capable of handling it with the greatest despatch. The Aladdin Company has successfully solved the housing problems of many of the greatest corporations of the world, including the United States Government and the British Government. Aladdin literature contains descriptions and prices for complete cities of 300, 500, 1000, 2000 and 3000 population.

### **Aladdin Cities—population of 300 to 3,000**

Aladdin Cities are the result of a careful research work into the necessities of modern civic life. Every necessity which makes for health, comfort, hygiene and expansion is included in these plans. Each city is complete and specifications include complete materials for homes of different sizes, churches, schools, public service buildings, such as stores, offices, hotels, banks, etc., all materials for water and sewage distributing systems, electric service and generating plant, all materials for landscape work, gutters, curbing, sidewalks, etc.,—in short, complete materials for each city.

### **Send for Book "Industrial Housing"**

The Aladdin System means handling the erection of houses with despatch. Each price includes complete material ready-cut—a feature which eliminates the necessity for skilled help in erection. Aladdin literature contains over 100 designs of homes from cottages of two rooms to dwellings of 18 rooms, store, hotel, church, school and other types of public buildings; industrial courts showing attractive arrangements of different numbers of workmen's homes; complete cities intended for populations of from 300 to 3,000. Copies of these books will be mailed to those interested.



Floor Plan—The Everett

## The Everett

See prices on inside of front cover.

**H**APPINESS, comfort and character are portrayed in the Everett, a new Aladdin home which is fashioned on the new bungalow lines now so prevalent in California. The Everett represents the most modern science of home building and planning. In design it is strikingly attractive, rich and refined without a single trace of gaudiness. Side walls of rough cast or pebble dash cement stucco, Dutch type roof with wide eaves lend a pleasant touch to the very modest exterior of this home.

The interior is delightful. The large room at the front—a combination living room and dining room—spacious kitchen, two good-sized bedrooms, with bathroom, size 8x8 feet, make an exceptionally good plan for the bungalow home. Still another feature that proves an advantage to the housewife is the closet space. A large closet off each bedroom and linen closet near bathroom, provide more than ample closet space for the average family.

There is much information on the Everett that cannot be included here on account of limited space. It will be sent to you if you request it.

For prices refer to inside of front cover.

See terms on page 2 and general specifications on pages 12 and 13.



# The Warren

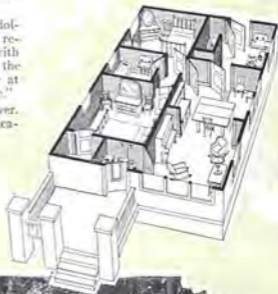
See prices on inside of front cover.

**S**TUDY the floor plan of the Warren and see if you can find an inch of waste space. It is the most practical of homes. There is much in the Warren that you cannot see at first glance. For instance, notice the short hallway inside the front door—just a dandy little place to hang the wraps of evening callers. The clothes closet built next to the hallway and opening into the bedroom is just ideal. Off the front hallway is the living room, and that it is well lighted by three windows at the front is noticed the moment you enter, and the wide arch dividing the living room from the dining room really makes them one big room. Through a door in the dining room you enter a hallway. It leads directly to the front bedroom, bathroom and back bedroom, separates living rooms from sleeping rooms so that neither one is disturbed by the other. The woodwork and floors can be finished any way you like for our beautiful Oregon Fir is unsurpassed by any kind of interior finish.

Both front and back bedrooms are compact. Now visit the home workshop—the kitchen. One can reach the dining room, basement or outdoors very easily. Now, have you found any waste space, or could you improve upon it in any way? The Warren has a great many friends. Will you be another?

"I saved four hundred and seventy-five dollars on my 'Warren,'" wrote an owner recently. "and to say that I am delighted with it, is putting it mildly. My carpenter said the material was finer than we could get here at any price, and everything went together fine."

For prices refer to inside of front cover. See Terms on page 2 and General Specifications on pages 12 and 13.

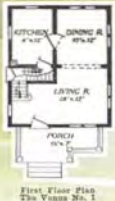






## The Venus

See prices on inside of front cover.



We were greatly pleased to receive this letter because our aim when designing this home was to make it unusually attractive.

The Venus is a type of home that appears equally as well on a narrow lot as one that has plenty of roomage.

A careful study of the exterior shows that many artistic touches have been added to get this effect. The most noticeable features are the stained windows, heavy brackets supporting the eaves, exposed rafter ends and the bracket boards over the front bedroom windows.

The porch is unique and unusual in shape with a combination gable and drop roof effect.

The interior is of unusual interest. Large living room, dining room, kitchen, three bedrooms and bath have a compact floor plan.

For prices of the Venus refer to inside of front cover. See General Specifications on pages 12 and 13. See Terms on page 2. See Interior Illustrations, page 7.

O

NE of our customers write us saying: "It has been a never-ending pleasure to me to see the effect of my Venus home on the pass-by. It continually attracts attention from people driving and walking by, many of whom stop to take a second look."



# The Pasadena

See prices on inside of front cover.

**T**HE Pasadena—the beautiful. A home of sunshine, flowers, trees and foliage. This remarkable home is Aladdin's most notable offering to home builders for 1919. Remarkable in design, remarkable in arrangement, and lastly, remarkable in cost of materials.

It represents the new thought in bungalow architecture. The departure from the rough and blunt lines to the more beautiful and substantial touches is symbolic of one's desire in a home.

California—its sunshine and flowers veiled in a blue sky—is evident in its every line. Setting, as it does, close to the ground, climbing ramblers help express the dainty and artistic feeling of this home design.

And the room arrangement is no less a success. Both plans hold a charm that is unusual—both have convenience, comfort and spaciousness that seem impossible to include in a home of these dimensions.

The cost of materials for the Pasadena, all manufactured and ready to erect, is indeed economical. Aladdin's system of building again puts the beautiful in homes within the reach of many. For prices of the Pasadena—either size—refer to inside of front cover. You will also be interested in the specifications on pages 12 and 13. See terms on page 2.



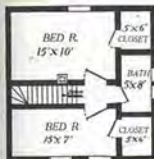


## The New Eden

See prices on inside of front cover.

**T**HIS home, the New Eden, shows the result of careful planning before building—and it is surely gratifying to its many owners among Aladdin customers. On a ground space of 20x20 feet, this home gives more room, more comfort, more convenience than has before been obtained. Two stories, having two bedrooms upstairs, a hall, a living room, a dining room, a kitchen, an open stairway, a porch, and above all, an attractive looking house. It is so well liked by its many happy owners, that it is common for them to call it the "Wonder Home" on account of its low price, abundance of space, and its convenience.

Notice the exterior. A broad belt across the front of the house divides first and second stories, giving a pleasing and harmonious effect. The half-sheltered porch is a pleasant feature and is well built for strength, attractiveness and harmony. The full length column, fronted by pedestals, makes a comfortable porch. The diamond paved window to the left of the front door gives plenty of light to the stairway and adds attractiveness to the front of the house and porch. Living room and dining room are divided by a wide arch, making them practically one room. Both rooms are well lighted and of good size. Notice the double window in the dining room. Two men can erect and complete this house in about ten days. It can be done by any two men who are willing to work, assisted by our complete instructions and illustrations. For price of the New Eden refer to inside of front cover. See General Specifications on pages 12 and 13. Detail specifications will be sent you on request. See Terms on page 2.



Second Floor—The New Eden



First Floor Plan  
The New Eden

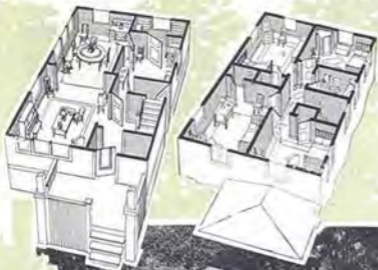
# The Standard

See prices on inside of front cover.

**Y**OU will agree with Aladdin customers and owners of the Standard in their claim that "it is the best square type house ever offered to home builders." Greatest in amount of space, best in point of design, most convenient in arrangement, and all this at a price that is much lower than it would cost you if you were able to buy thru any other source. Notice the architectural detail under the eaves, porch, and the dormer.

Close inspection of the illustration gives many pleasant surprises. The scrolled brackets which are especially machined for the Standard, add a finished touch to the sweeping eaves. Possibly you have noticed that this has been carried out on all eaves—dormer and porch included. The broad belt is also used to advantage here.

The porch, distinct in type and attractive in appearance, contributes much to the general design of the Standard. Hip roof, heavy boxing and scrolled brackets, tapering porch columns and full length spindles, all form a delightful contrast to the ordinary. Two ideas of arrangement are shown in the photographs. In the large illustration, the steps are placed at one side connecting with the walk that





*Living Room - The Standard*

leads to grade or side entrance. The small illustration shows steps at front of porch.

The inside arrangement of the Standard has appealed to many. Notice the vestibule entrance. This is a very useful feature in that it provides an excellent place for hanging wraps. Besides this, it is a valuable feature in cold weather. Thru the next door we enter what might be called a reception hall and the impression is very pleasing indeed. The handsome exposed staircase can be beautifully stained and varnished and gives one an idea of the rich effect on the interior. You will find that the living room and dining room are extra large—and that will suit you—roomy and especially well-lighted.

The kitchen in the Standard home invites efficiency methods. First, the size is ample for working to advantage. Second, no wasted steps are necessary. Pantry at the rear is but a few steps away while the dining room is but another few steps through double action door. Either the reception hall or the grade entrance leading to basement or outside may be reached directly, meaning a saving of time.

The second floor has model sleeping rooms and the arrangement with bath at the head of the hallway is perfect. Each of the four bedrooms shown on the plan are

extra large and have excellent wall space for beds, dressers, etc. Three of the bedrooms have large closet space directly adjoining—the other bedroom is provided with the convenient Aladdin closette. For complete information on the closette refer to page 106. All ceilings in bedrooms are square and not hipped. You will be greatly pleased with your new home—The Standard.

Refer to inside of front cover for price of the Standard. See General Specifications, pages 12 and 13. Complete detail specifications for the Standard will be sent on request. See Terms on page 2.



First Floor Plan  
The Standard



Second Floor Plan  
The Standard



## The Willard

See prices on inside of front cover.

**M**Y home! Delightfully attractive, substantially erected, practical in arrangement—nothing less could express the sentiments that form the tie between owner and home—the Willard. A personality that is unusual, marks the designer's work on this bungalow. It is correct in line, and harmonious in detail.

Sidewalls of stucco will please the fastidious. Stucco or pebble dash cement walls seem to challenge summer's sun and defy the winds of winter. But where shingles or bevel siding are preferred to stucco, they can be furnished in place of the stucco at the same price. And the general appearance of the Willard would be sure to please, no matter which sidewall treatment you selected. You will approve the designer's idea of a broad and roomy porch. It is partially covered, the open space which is usually planned for the spot located in the afternoon's shade, is bordered with shrubs.

Much thought was expended in planning the interior. Every room has an attraction in its careful layout for light and convenience. The living room and dining room are both at the front of the home, being divided by French doors. Butler's pantry between dining room and kitchen, is modern in thought and practical in effect. Both doors on butler's pantry are of the double action type. Large kitchen, well lighted, is another feature of the Willard. Notice the efficient layout—from the kitchen, direct access may be had to rear porch, hall leading to living room and front entrance, cellar entrance, and to butler's pantry and dining room, and this with no sacrifice of necessary wall space for stove, work-table, kitchen cabinet, etc. The hallway from living room opens onto the large bedrooms, with closets, bathroom and linen closet.

For price of the Willard, refer to inside of front cover. See General Specifications on pages 12 and 13, and Terms on page 2.



Floor Plan  
The Willard



# The Franklin

See prices on inside of front cover.

**A**RE you pleased with the lines shown in the Franklin? This home has appealed to a great many. It was first erected in Bay City, the home of Aladdin.

The excellent work of the designer is shown in the illustration. The keynote of the exterior plan is massiveness. Note the two large columns. They add strength to the front of the home and harmonize with the wide and heavy barge board. These columns are two feet square according to the plan.

Another feature that adds much to the attractiveness of the Franklin is the porch pedestals that carry the porch balusters, which you will note do not connect with the large supporting columns on the front. The pedestals—four in all—are a departure from the usual type of porch arrangement used in bungalow architecture tending to add much to the principal idea of the plan—strength.

Equal harmony is evident in the bay window in the front gable. This bay accommodates two single and one double casement windows.

And the Franklin interior has much to interest you. You notice the room arrangement. The living room and dining room will appeal to you. As the front door is swung open a feeling of comfort is evident. The wide living room offers many advantages in easy and attractive arrangements and with the fireplace at one end gives all that can be desired in living room comfort.

The dining room is separated from the living room by an arch with double French doors. This feature is proving popular and besides this is a convenience on many occasions. Another point that we desire to call to the housewives' attention is the abundance of light furnished the kitchen by a double window on one side and single window on rear. Ideal efficiency arrangements of work tables and cabinets can here be secured.

The three good sized bedrooms are also well located. Each has plenty of light and wall space. The bathroom is situated off the hall at the rear.

Although the Franklin shown here is finished in stucco, it can be furnished with shingles or siding for sidewalls at the price quoted.

Send today for complete information on the Franklin, also detailed specifications. For Price refer to inside front cover. See General Specifications on pages 12 and 13 and Terms on page 2.



Floor Plan  
The Franklin





# The Villa

See prices on inside of front cover.

It is difficult to select words suitable to describe the beauties and convenience of this thoroughly modern home. While the architectural lines are strong, yet the artist has rendered them extremely pleasing to the eye. The percola effect at the front and each side, combined with the stately columns, lends a certain dignity and grandeur that at once places The Villa in a class by itself. Like the beautiful everywhere, this house challenges the lover of the artistic and furnishes a concrete example of statchness and strength which at the same time is an embodiment of the finest culture.

On passing through the vestibuled front entrance into the large and spacious hallway, the visitor's attention is at once attracted by the beautiful and easily ascending stairs at the rear, and on each side by the double French doors leading either to the living room on the right or the large dining room on the left. Without changing one's position, there is easily visible across the living room the French doors leading to the sun parlor. This sun room extending the entire width of the house, affords by means of the casement windows a protected porch in pleasant weather or a comfortable lounging room when the elements outside so dictate. The breakfast room, ample for a small family dining room, a butler's pantry, and a conveniently arranged kitchen complete the first floor. On the second floor, opening off a central hall, are the owner's room with bath and three other corner bedrooms with closets. A large well lighted third floor furnishes, when desired, convenient space for the maid's quarters. (See interior photos of the Villa on page 68.)

The Villa shown in the illustration is located in Bay City, Michigan, but a short distance from the Aladdin Company's general offices. Interesting, indeed, would a trip of inspection of this home be to anyone contemplating its erection. The landscape work, interior decoration and other details in connection with this beautiful home, will be of great interest, and will, no doubt, offer many suggestions for your Villa home. The Aladdin Department of Service is ready to submit suggestions for landscape work, interior decoration, etc. This service has proven very popular and valuable to home builders.

There are many other features of the Villa that cannot be included here on account of limited space. On request, this information will be sent to you.

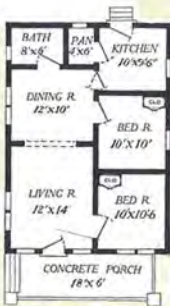
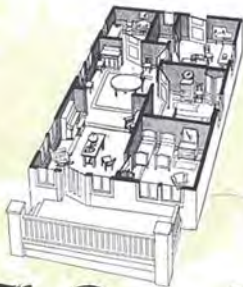
For price of the Villa refer to inside of front cover. See Terms on page 2 and General Specifications on pages 12 and 13.



Second Floor Plan—The Villa



First Floor Plan—The Villa



Floor Plan—The Raymond

## The Raymond

See prices on inside of front cover.

**F**OR compactness, convenience and modern designing, the Raymond is among the leaders. When entering the front through the attractively designed bungalow door, one is at once impressed with the roominess of this apparently small house. This long stretch of nearly 25 ft. is secured because of the wide arch separating the living and dining rooms. In this, as in all Aladdin houses, the designer has kept prominently in mind the thought of modern arrangements, which in Aladdins is only another way of saying, "doing one's work with the least possible effort."

Notice how the kitchen, apparently in the remote part of the house, is conveniently accessible to the dining room and pantry. These "step-saving arrangements" are the things that help to make "doing one's own work" a real pleasure. What housewife would not be delighted with the plan of the Raymond? Of course, the exposed rafters, casement windows and porch all contribute their part to make this little bungalow complete, attractive and modern. If desired, siding can be substituted for wall shingles without extra cost.

Refer to page 101 and note the beautiful two panel door that is furnished for all Aladdin Houses.

For Price of the Raymond refer to inside of front cover. See Terms on page 2 and General Specifications on pages 12 and 13.





# The Brentwood

See prices on inside of front cover.

**T**HIS most charming dwelling has a host of admirers. Its individuality is apparent in many ways. The broken roof, second story balcony, hooded front entrance, semi-enclosed porch, pergola porte-cochere with French doors leading to dining room, casement windows in front and full attic, form a delightfully attractive whole. The house will be furnished with either siding, shingles, or stucco exterior. The bay window projects three feet and is ten feet wide. The pergola at the side is furnished with floor, giving a side veranda instead of porte-cochere. A most unusual and distinctive idea is the little balcony with double French doors from the upper sewing room.

Note the sleeping room leading from sitting or dressing room on second floor. This gives all the advantages of the sleeping porch, with none of its inconveniences. The sleeping room has four windows. Linen closet is arranged in hall, a very large closet from the sewing room, and each bedroom has a closet. Built-in buffet in dining room affords room for dishes, linen and silver. (See interior photo, page 49.)

A Tennessee owner (name upon request) writes about his Brentwood: "My Brentwood is the admiration of the town. It was ready for plastering two weeks after the first nail was driven. I saved about \$700 with Aladdin's help." Could you wish for greater assurance of your own satisfaction than from the pen of this owner?

For prices refer to inside front cover. See Terms on page 2 and General Specifications on pages 12 and 13.



Second Floor Plan—The Brentwood



First Floor Plan—The Brentwood



# The Boulevard

See prices on inside of front cover.

**T**HE Boulevard is the wonder home to many prospective home-builders. The design in both exterior appearance and interior convenience is the result of deep thought in planning. Stop and think of it—three large bedrooms, large living room and dining room with good sized kitchen, bath and closets—and all on one floor! Of course, this number of rooms may be included in other one-story designs, but look again at the sizes of the rooms!

In point of design, The Boulevard is one of the most attractive. Designed on conservative lines, this home is marked by a number of pleasant architectural features. The dormer in the front roof gives light and air to attic and adds much to its beauty.

The porch is formed under the main roof—its wide dimensions provide comfort and add much to the general effect of this home.

A wide belt divides the siding on the first story and shingles in gable—the treatment used here is excellent, white belt, brown stained shingles and sidewalls.

The interior will appeal to every housewife who has a desire to make the home beautiful and comfortable.

The arrangement of rooms and size of each permit excellent decorations and the utmost in convenience. See Interior Illustrations page 33.

For price of The Boulevard refer to inside front cover. Study General Specifications on pages 12 and 13. Complete detail specifications will be sent you on request. See Terms on page 2.



Floor Plan  
The Boulevard



**A**s a reward for a life of thrift, a woman gained ownership to the spot of land reputed to be the center of the United States. It was well worth her time to search far and wide for a beautiful home design for this enviable location. The center of the United States—the heart of liberty—was deserving of the best. It was unnecessary to say that the home for this location must be rock-ribbed American in architecture.

In the process of elimination which was to determine the suitable design, hundreds were cast aside. Porches too small, windows too few, exteriors too plain and interiors too stuffy—was there not one home that would prove suitable? The book, *Aladdin Homes*, was consulted too, but seemed to be lost to receive consideration. Carefully the pages were turned, here and there was a home that would possibly do, until at last, the home of them all—the one that fulfilled the wishes and hopes of the owners—was found. It was the Plaza. Closer inspection proved beyond a doubt that this home above all was the one—and one only—for this location. It is a thoroughbred bungalow and bungalow architecture is American.

The very essence of American architecture makes up its attractive lines. The West is portrayed in the beautiful California pergola porch, the East in the interior of the home. The sunny South finds credit in the spacious porch, while the North has loaned the shingled sidewalls representing northern homes in the early days of American history.

Yes, the central spot of the United States—American—is crowned with the Plaza home. And this same Aladdin Home has crowned many other spots of which owners are proud.

If you are interested in making the Plaza your home, write us for the many interesting details you will need before deciding to build. See prices on inside of front cover.

You will be interested in the general specifications on pages 12 and 13. Also ask for complete detail specifications for the Plaza, which will be sent you free.



Floor Plan  
The Plaza



*The Plaza*  
See prices on inside of front cover.



**A**n interesting story is woven into the creation of the Aladdin Pomona Home. One of California's native daughters was brought by her husband as a bride to a charming little New York village to live. While she was delighted with her new surroundings, she wanted to retain some part of the feeling and atmosphere of her golden west.

With the enthusiastic support of her husband, she appealed to Aladdin to produce a home that would radiate the delightful California sunniness and typify the bungalow-craft for which the sunset country is renowned.

Aladdin could not well overlook this unusual appeal and promptly set about the work. When the sketches, drawings and plans were submitted to the young couple, they were so delighted that they christened the home The Pomona, as being a worthy representative of the delightful little California town of that name, from which the "girl from the golden west" came.

When the home was completed, a photograph was sent to Bay City and Aladdin was given permission to present it in the Aladdin Book of Homes.

You may be sure that since that time many other Aladdin customers have chosen it for their home and you will find Pomona designs nestling beneath trees and surrounded by pleasant gardens in many American communities.

If there is such a thing as personality in a home, the Pomona surely expresses the feeling in every angle and line. Bathed in a hot summer sun's rays, its wide eaves,



## *The Pomona*

See prices on inside of front cover.



shady porch and many windows offer cooling protection; or blanketed by winter's snows it nestles snugly and compact, and inviting the traveler to its protection. Walls of siding and shingles, building paper; sheathing, studding and lath and plaster are equally good non-conductors of heat and cold. Externally, many interesting ideas are worked out and each blends naturally into the whole. Observe the tapered porch pillars of the same design. The chimney outline matches this plan, as does the rafter ends and the projecting ends of belt encircling the house above the water table. Brackets supporting the eaves are shaped differently than any other bungalow you ever saw, while the porch rail is embellished by a band running midway between the upper and lower rails. Two plans are illustrated, one-story and two-story. In the one-story, the front room is adaptable to use as den or bedroom, in the latter case giving three bedrooms. Good closets are observable in both designs.

There are many other things of interest that you should know about the Pomona, particularly those noted in a recent issue of Aladdin's Magazine—a magazine for home builders.

This issue was devoted entirely to the Pomona home.

The living room, dining room, bedrooms—every part of the home possible to photograph—are pictured in this issue. Different views of the exterior and pictures of the Pomona at different stages during its erection, an article on kitchen efficiency and arrangement, and many other bits of information that you will want to have, are presented in this popular magazine number. This, with other information, will be sent to you free upon request.

For prices of the Pomona refer to inside front cover. See General Specifications on pages 12 and 13. Detail specifications for the Pomona will be sent on request. See Terms on page 2.



First Floor Plan  
The Pomona with Second Story



Second Floor Plan  
The Pomona with Second Story



Floor Plan  
The Pomona  
One-Story

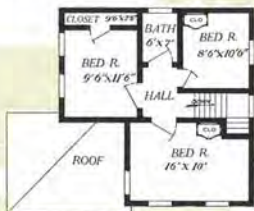


## The Michigan

See prices on inside of front cover.

**W**HY does the Michigan Aladdin Home sell as successfully each year as other Aladdin's? Why does it still remain a popular home in Aladdin's catalog after a four years' period since it was first classified? Simply because it is a conservative design of a type that has always found a number of admirers among home builders. Among the great number of people building new homes each year, a large percentage are not attracted to types decorated with embellishments and novelties that, to use their words, "come and go every year." Their preference runs to simplicity, service and durability. And to this class of buyer whose ideas are fixed on plan and type, the Michigan is dedicated, first on account of its long-standing reputation as a serviceable and always attractive type of home, and second on account of its economical cost—both in materials and erection.

Here again it is proven that the conservative is always the practical. In layout the Michigan is practically square—an admitted advantage in plan, both for economy of erection and heating. Another advantage is the comfortable rooms possible with the square type home. The front entrance from the wide porch leads to vestibule opening onto living room and dining room. A more pleasant living room arrangement is hardly







possible. Situated at the front of the house, it commands the most interesting view from three sides. The semi-open staircase is attractive in design and finish, and is conveniently located. The dining room is large and roomy, well lighted and located opposite the kitchen. From the kitchen, the grade cellar entrance leads to side door or basement.

The second floor plan illustrates hall, three good-sized bedrooms, bathroom and closets. Notice, especially, the front bedroom size, 16x10 feet.

In regard to cost of erection, the Michigan has always surprised its builders. Erected from materials completely manufactured in the Aladdin mills, it takes shape, when the work is started, in a remarkably short space of time, and records of builders show that it has been completed, ready for occupancy, in four weeks from date the work was started. The tendency of costs to vary in different communities and under different circumstances according to price of labor, etc., makes it impractical to quote here figures that would apply in all communities. However, a method of figuring costs accurately before the work is started will be sent you upon request. This will enable you to arrive at a very close figure for the completed home. Send for this information today, together with any other information you desire regarding the Michigan, and it will be sent you by return mail.

A number of very interesting letters from owners of the Aladdin Michigan home are on file in our offices. Copies will be sent to you if desired.

For price of the Michigan, refer to inside of front cover. See General Specifications on pages 12 and 13 and Terms on page 2.





## The Eleanor

See prices on inside of front cover.

**T**HE Eleanor home, built on popular California bungalow lines, is one that is adapted to all climates. It seems that the very design demands stucco or pebble dash cement sidewalls. And no better protection from winter winds and heavy frosts could be secured. It retains its wonderful weather-resisting qualities, too, in warmer climates. As you possibly know stucco seems to hold all rooms cool and pleasant in spite of a high summer's temperature.

In keeping with bungalow lines, the Eleanor is practical, but not gaudy. It blends well with the handsome surroundings of shrubs and lawns. Possibly you have noticed the roof formation. Different indeed from the customary found on the average bungalow home. The porch is formed under the main house roof—it is staunch and cozy in appearance. Have you noticed the front entrance? Another modern bungalow touch! The sidelight when placed on each side of an entrance adds impressiveness to the design, besides permitting more daylight to enter into the home.

Modern ideas are expressed on the interior of the Eleanor. Compact, cozy and convenient, the Eleanor home plan attracts the favorable attention of scrutinizing builders. The living room and dining room are ideal in location and size. Excellent wall space for furniture settings is offered in the living room. French doors divide living room from dining room—notice the casement windows in dining room—a most charming touch of beauty to a most popular spot in the home. The connecting door to the kitchen is of the double action type. You will like the arrangement of bedrooms and bath. In a minimum of space, this ideal layout permits large sized bedrooms, closets of ample size and an 8x6 foot bathroom.

For prices of the Eleanor, refer to inside front cover. See General Specifications on pages 12 and 13, and Terms on page 2.



Floor Plan—The Eleanor





Floor Plan—The Maples

## The Maples

See prices on inside of front cover.

**T**HE MAPLES is of the more conservative type of bungalow. At first glance, you will notice that simple lines are here made into a practical, substantial home. It has found great favor among Aladdin customers. The low roof, wide eaves, odd windows, exposed rafter ends and altogether attractive simplicity make a very pretty exterior without going to extremes in decoration. Much credit for the convenient arrangement of the interior is due to the fact that the house is square. Notice the manner in which the sleeping rooms occupying one side of the house are separated from the living rooms. The spacious living room at the front has an abundance of light and comfort with outside entrance, entrance to front sleeping room and wide entrance to the dining room. Dining room is easily reached from back bedroom, living room and kitchen, and is well lighted on all sides. The kitchen is placed opposite dining room with outside entrance to the rear. Owners of the Maples claim for it the most convenient and comfortable arrangement. Ask us for names of Maples owners near you and let them tell you in their own words. For price of the Maples refer to inside of front cover. See General Specifications, pages 12 and 13. Detail specifications for the Maples will be sent you on request. See Terms on page 2.





# The Kentucky

See prices on inside of front cover.

Is it not a beauty in every line? Simplicity is the keynote, yet what could be added to improve its attractions? While it reminds one of the stately colonnades of old Colonial mansions, it still retains the delightful atmosphere of modern American bungalows. The broad expanse of porch, with plain Tuscan columns and projecting eaves successfully blends these two most desirable types without losing the dignity of the one nor the cosy homeliness of the other. Double front doors seem to open wide a hospitality of true American spirit. Casement windows with divided lights swing into living room, dining room and bedroom from the porch. Both living room and dining room are unusually well lighted.

The Kentucky Bungalow has made a remarkable impression on our customers, having attained as great a degree of popularity as any design we have ever produced. You will be interested in the Interior Illustrations of the Kentucky shown on page 60 of this book.

The two views shown—living room and dining room—give a fair idea of the large amount of space provided for furniture arrangements. The owner of

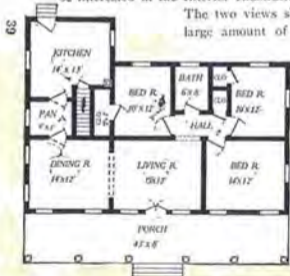
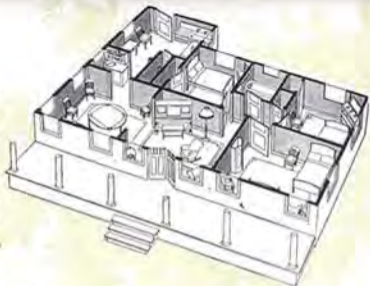
the Kentucky from which these interior views were made included a built-in buffet in the dining room. The living room is very large and surely presents an inviting appearance. The Department of Service has many excellent suggestions on file for interior decoration of the Kentucky. We will be glad to send you suggestions upon request or work out the details of your ideas if you will send them to us. The window blinds shown are included with the Kentucky.

Refer to inside of front cover for prices. Study General Specifications, pages 12 and 13. Exact detail specifications of the Kentucky will be sent upon request, which will enable you to make careful estimate on cost of erection.

Thru the many years of popularity, the Kentucky home has gained many friends until today every state in the United States, with two exceptions, claims three or more Kentucky Aladdin homes—and each owner is more than pleased with the plan and design.

Possibly there is one near you. If so, wouldn't you like to visit it? Ask for name of Kentucky owner nearest you. This will be sent to you upon request.

See Terms on page 2.



Floor Plan—The Kentucky

# The Stanhope

See prices on inside of front cover.

ARE you not pleased with the Stanhope? Can you conceive how with straight architectural lines any more pleasing or substantial style of construction could have been worked out? Notice what a strong yet artistic appearance is given the entire front by the heavy porch pedestals, square porch columns and porch rail.

How in keeping are the small lights in bungalow door and the upper divided lights in all windows. And when it comes to interior plan, it would be very difficult to work out a more convenient arrangement. The wide arch between living and dining rooms gives an appearance of one large room.

The double action door leading to a kitchen large enough, yet none too-large, completes the living part of this compact, cosy home. Three well lighted, suitable sized bedrooms give as much sleeping room as is frequently found in a much larger home. For any one desiring a six-room modern house all on one floor, the Stanhope is a great favorite. The Aladdin readi-cut system of construction offers you a big saving on this home. You are now able to dodge the high cost of building because you pay for no waste of materials or labor in erecting an Aladdin. Match this against the excessive cost of waste in building on the old-fashioned method. Then compare market prices with Aladdin prices and you will realize the big advantage offered you in the Aladdin readi-cut system. It is estimated that 18% of the materials are wasted in building on the saw-measure-on-the-ground method. This means \$18 out of every \$100 is paid for waste actually lost! The Aladdin system has reduced this waste to less than 2%—put the \$18 in your pocket. Can you afford to build on any other plan? Do you care to make this

saving? Ask us for names of customers—let them tell you in their own words. There are many owners of the Aladdin Stanhope throughout the country. Probably there is one near you. We will send you names of owners—you can pay them a visit and inspect their home and material.

For price of the Stanhope refer to inside of front cover. Study General Specifications on pages 12 and 13. Complete detail specifications will be sent you upon request. See Terms on page 2.



Floor Plan  
The Stanhope No. 2



Floor Plan  
The Stanhope No. 1





# *The Stanhope*

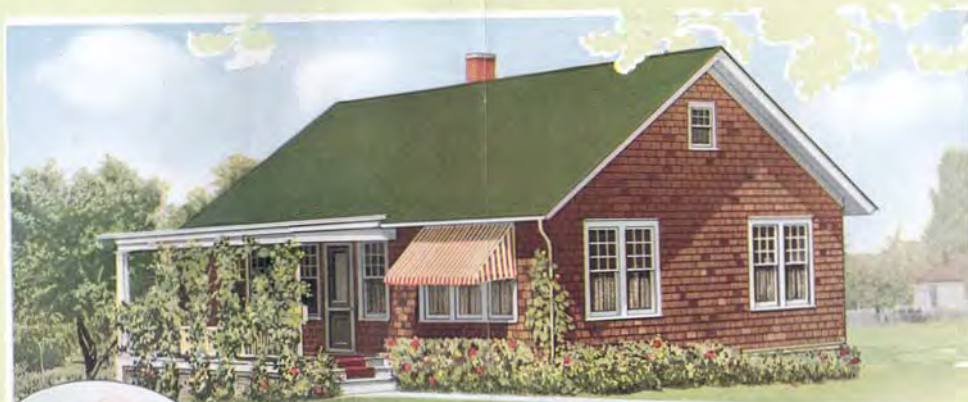
See prices on inside of front cover.

**T**HIS picture tells a better story of Aladdin Golden Rule Service than anything that could be put into words. Our good friend stands on the porch, proud of the result of his industry, appreciative of the individuality and distinction of his home and enthusiastic in his praise of Aladdin materials and service.

In his choice of an Aladdin home, the extreme simplicity of outline of the Burbank appealed to him strongly and he saw the possibilities of shingled walls in a velvety brown, a soft green roof and an edging of pure white about the windows and eaves. The partial seclusion of the commodious porch with trailing vines took his fancy. But he is especially enthusiastic over the convenience of the rooms. Three fine bedrooms, a dining-room of unusual proportions and an excellent living-room, having grouped windows, afford ample accommodations for a large family. The kitchen is lighted by two windows, has cellar stairs and outside entrance.

Beautifully finished woodwork and floors of the purest lumber complete a home to the last degree of satisfaction, and should you select a Burbank, or in fact any other Aladdin home, you can most certainly be assured of a result as admirable as is illustrated on this page. In further proof of this we will be glad to furnish you with the names of many Aladdin home owners who will testify for their satisfaction, who will tell you of the money that they have saved and will even urge you to join the big Aladdin family.

For price of the Burbank refer to inside of front cover. General Specifications of the Burbank will be found on pages 12 and 13. Detailed specifications will be sent you upon your request. See Terms on page 2.



# The Burbank

See prices on inside of front cover.





Second Floor Plan—The Carolina



First Floor Plan—The Carolina

## The Carolina

See prices on inside of front cover.

**H**ERE is a strong, substantial-looking home that impresses everyone. It has some exceptionally desirable advantages not found in any other design. In the first place, the price we have been able to place on it is truly astonishing for the conveniences included. Four good bedrooms—think of it! One bedroom is downstairs. Every bedroom has a good closet, with an especially large extra closet in the front bedroom. Two grouped windows flood the living room with light and air. Wide arch separates the dining room and living room, giving a 26-foot vista across the house. The massive roof with heavy grouped columns on porch gives a very substantial appearance. This house is certainly a credit to any owner.

The Carolina has never failed to please its owners. One owner claims a saving of \$284.00 in building the Aladdin way. These figures are the result of a comparison on bids received and give an example of the average saving for Aladdin owners. We have on file, names and addresses of many thousand Aladdin owners. There are some near you. Why not pay them a visit? Inspect their homes—the materials, etc. Then talk over with them their experiences building an Aladdin. You will enjoy this visit. Send for names of Aladdin owners near you.

For price refer to inside of front cover. See Terms on page 2 and General Specifications on pages 12 and 13.



## The Charleston

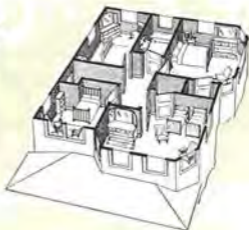
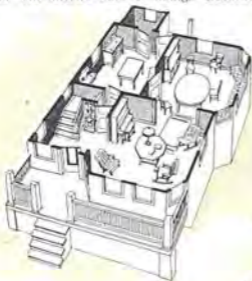
See prices on inside of front cover.

**T**HERE are many good points in the Charleston, a modern square-type design. The first noticeable feature is the deep bay windows in front, both stories, also on one side. These give free sight in all directions and ample light.

The interior arrangement is one for convenience. Front entrance is gained through a large reception hall with semi-open stairway and arched entrance to large living room. This feature has proven popular, as it can be used for one room and still retain the convenience of two.

The kitchen has proved extremely attractive to busy housewives. A rear entrance leads to the back porch, while the grade entrance at the side leads to the out doors and in-asegment, saving many steps.

Four large bedrooms and bath are arranged on the second floor—plenty of light in all. All exterior walls of siding. Beautiful Colonial columns support porch roof and





First Floor Plan—The Charleston



Second Floor Plan—The Charleston

a three-quarter length glass door adds greatly to the appearance. The Charleston is a good, substantial, roomy home.

There are a number of attractive arrangements for the Charleston interior. The room arrangement and sizes of each adapt themselves to comfortable furniture settings.

Of particular note are the attractive bay windows. These add much to the four rooms, living room and dining room on the first floor and two bedrooms on the second floor. Cozy corners for the placing of easy chairs, cushions and pillows suggest themselves and these features are popular with home-loving folks everywhere.

The Aladdin Department of Service has a number of interesting suggestions on interior decorations, etc., for the Charleston. Also a number of practical color schemes for the exterior. Send for this information today—it is free. It will enable you to plan your new home in detail.

Owners of the Aladdin Charleston home claim to save between \$300 and \$400 by building the Aladdin way.

This is due to the Aladdin Read-cut system. All the material is cut to fit in the mills and reaches you ready to be nailed in place. In this way you pay for no waste of lumber or labor—you pay for the material that is used and no more.

From careful investigation it is estimated that the average waste of good lumber when building the old-fashioned way is between 18% and 25%. Do you care to pay big prices for lumber that is wasted?

For price of the Charleston refer to inside of front cover. See Terms on page 2 and General Specifications on pages 12 and 13.



*A Corner of the Sheridan Dining Room*



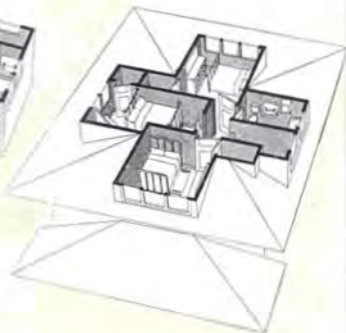
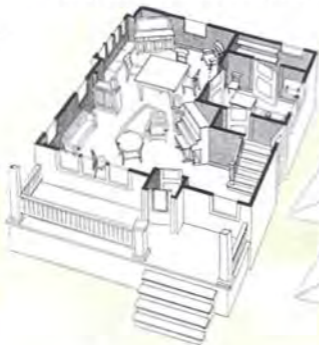
*A Corner of the Sheridan Living Room*

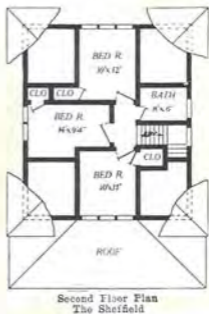


## The Sheffield

See prices on inside of front cover.

**D**o not the roof and porch lines of the Sheffield please you? The heavy overhang and Japanese roof effect give an individuality to this attractive home that invariably pleases its owner. Notice the heavy porch columns and exposed scrolled rafters. How well these carry out the general architectural lines. Ascending to the porch by the wide front steps, one is surprised with the size of the porch, 26x8 feet. An attractive front door and a French door lead into and through the vestibule to the living room. Notice the size, 26x15 feet, and the wide archway leading to the well lighted dining room. Arch A-1, page 106, is furnished for





this archway. A kitchen with pantry and stairs leading to basement and grade entrance complete the first floor. From the living room our easily ascending semi-open stairs lead to a central hall on second floor. Opening off the hallway are three bedrooms and a bath.

While this picture of the Sheffield shows the side walls with the double shingled effect, yet when desired siding without extra cost will be substituted for shingles.

For a substantial, convenient, attractive home, don't you think the Sheffield is one of the best? Refer to inside of front cover for price of the Sheffield. See Terms on page 2 and General Specifications on pages 12 and 13.





# The Lamberton

See prices on inside of front cover.

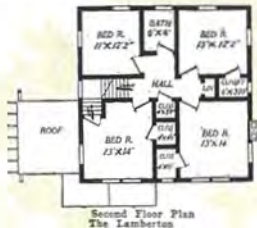
**T**HIS striking design has many delightfully original ideas. The pleasing proportion of its generous roof and the heavy timbered effects under eaves and windows, give stability and strength to the general impression. Study the hooded front entrance supported by heavy brackets. A pergola type of porch covering just fits in the right way. Also note the heavy abutment-like porch piers. The exterior is rough cast stucco but is sometimes furnished with shingled walls, the shingles to be stained a pearl gray, or left to weather.

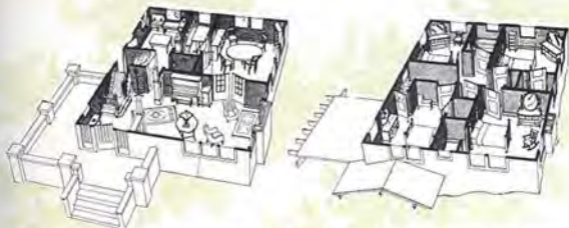
The Lamberton is a genuine American home. Its lines are American—straight, simple and massive.

Exterior trim seems to be confined to small divided lights in windows with heavy false window sills supported by brackets.

The brackets on the eaves are simple, and especially designed for this home.

Notice the front entrance—a particular feature of this home. The front door has





practically a full length glass which is divided in keeping with the general idea in the windows. The sidelights on each side of the front door are built to harmonize.

And what a splendid arrangement of rooms. The reception hall is separated from living room by a wide columned arch with bookcases built in.

The handsome staircase presents a very attractive appearance as you will note by referring to plan that a seat is arranged in front of the lower landing, the stairs being turned at the landing toward the living room.

The reception hall is well lighted. The front door and sidelights with small casement window at the side give an even light to hall and stairway.

The arched bookcase, which divides reception hall from living room, is fully described and pictured on page 106 of this book.

French doors lead from living room to dining room. A breakfast room separates dining room and kitchen. Entrance to kitchen is from either breakfast room, grade entrance or reception hall. A large cloak closet is conveniently placed. The second floor has four good, light, airy bedrooms, closets and bath. The third floor gives an attic thirty by thirty feet.

The bookcases shown in the illustration with fireplace on this page are not included with the Lamberton at the price quoted. Should you desire to include them in your home you will find them described on page 108.

Could more conveniences be offered in any home of its size than are incorporated in the Lamberton?

Price of the Lamberton is quoted on inside of front cover. See Terms on page 2 and General Specifications on pages 12 and 13.



*Living Room, Reception Hall and Staircase—The Lamberton*



*Fireplace with Bookcases—The Lamberton*





Floor Plan—The Rodney

## The Rodney

See prices on inside of front cover.

**M**ANY good American families are living happily and comfortably in Rodneys. Its four cozy rooms are all well arranged and its generous porch serves in a delightful way the outdoor pleasures of summer. A handsome front door with glass in upper part and embellished with moldings would suitably fit a more costly home. The double window in the dining room, with English sash made to swing in appeals strongly to the housewife. All upper sash are divided into small lights.

You have your choice of two sizes in the Rodney. No. 1 is 20x22<sup>1</sup>/<sub>2</sub> feet over all and has four 10x8 foot rooms. Price given on inside of front cover. No. 2 is 24x26 feet and has four 10x12 foot rooms. In both designs a wide arch separates the living room from the dining room. You will be delighted should you decide to own this cottage.

Of course, you receive our famous Dollar-A-Knot siding and all the materials entering the construction are positively the highest grades found anywhere. Frosted brass oak leaf design lock sets set off the beautifully grained doors and woodwork. In fact, you will have as finely finished a home as anyone. Two men can erect this house in four days. Most owners of the Rodney did all the work themselves, easily.

For prices on the Rodney refer to inside of front cover. See Terms on page 2 and General Specifications on pages 12 and 13.







# The Merrill

See prices on inside of front cover.

**H**AVE you ever seen a bungalow similar to The Merrill? Undoubtedly, you haven't, as it is a most recent Aladdin design—one built on both bungalow and Colonial lines.

The fact that this home is set close to the ground, built up but one story, finished with shingled sidewalls and heavy eaves supported by brackets, is an assurance of its bungalow nativity.

But here the designer sought a departure from the customary, and Colonial architectural lines were employed. Notice the front entrance with Colonial hood over front door. The side porch is also another Colonial feature which is a very desirable one.

The popularity of The Merrill is assured. Within sixty days' time after the plans were completed, and before it was given space in the Aladdin catalog, we had orders for thirty-two Merrill homes—a wonderful tribute to its practicability.

The interior of this home is one for convenience and attractiveness. The cased arch which makes a wide opening between living room and dining room, offers many opportunities for tasty decorations and arrangements. The living room on the front of the house is well lighted, has good wall space and offers the utmost in comfort to its occupants. The dining room is large, well arranged and offers the additional conveniences of the wide side porch. The plan shows three good-sized bedrooms, closets, bathrooms and kitchen with cellar entrance.

For price of the Merrill refer to inside of front cover. See General Specifications on pages 12 and 13. Complete detail specifications for The Merrill will be sent on request. See Terms on page 2.





Floor Plan—The Leota

**C**RAFTSMAN" from, door, windows grouped in pairs and side walls shingled are the particular ideas worked into The Leota. Another new thought is the side entrance to the porch. The porch posts should be very heavy and built of concrete as well as the porch floor. The interior arrangement is well illustrated by the floor plans shown above. This little gem of a bungalow will match, in both material and construction, homes of many times its cost. Beautifully grained interior wood work, frosted brass hardware fittings and the finest stains and varnishes combine to give you a most interesting bungalow. Note the windows with divided lights and the exposed rafter ends. When erected this bungalow is worth very nearly two thousand dollars, without the lot. You'll like every feature of it. The Leota is built of the same materials and in identically the same way as the Aladdin house which was erected at the Panama-Pacific International Exposition, and which was awarded the highest prize by the International Jury of Awards. It is built of the same material and in identically the same way as the homes of the President and the other officers of The Aladdin Company. The same beautiful, clear and flawless lumber, high priced paints, stains, varnishes and hardware are furnished as in all Aladdin houses. While no cellar is shown under The Leota from which this picture is taken, you can of course have a full cellar, as in any other home.

For price of the Leota refer to inside of front cover. See General Specifications on pages 12 and 13. Detail specification of the Leota will be sent on request. See Terms on page 2.



*The Leota*

See prices on inside of front cover.



Floor Plan—The Thelma

**S**TUDY the floor plan of the Thelma! Imagine furniture, carpets and curtains in place, and a happy family seated comfortably in the living room. Every room in this plan has a charm for the home loving folks. Wide, light and cheery, the living room of the Thelma is really an exception to those found in the average home. Three outside walls permit a view in front or on either side of the home.

Direct access thru arch to dining room is indeed a pleasant feature of the Thelma. And here the dining room, too, is a front room, its two front windows looking directly onto the street. The three windows assure plenty of light and cheerfulness, and the size of this room means ample space for convenience and comfort.

The two bedrooms, large in size and well located, with large kitchen off dining room, make up a very appealing home plan.

And isn't the exterior delightful? Fashioned on substantial bungalow lines, its beauty as a home is apparent in many ways.

Shingled side walls, pure white window sash and trim, wide belt at gable, suggest many color schemes.

The delightful exterior, the interior with its coziness and the low price quoted for the complete material, are your assurances of the highest satisfaction.

For prices refer to inside front cover. See terms on page 2, and general specifications on pages 12 and 13.



*The Thelma*

See prices on inside of front cover.

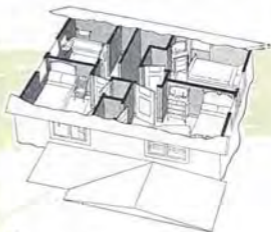


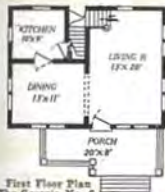
# The Georgia

See prices on inside of front cover.

**T**HE Georgia presents a most unusual combination of true bungalow and two-story house. Excellent judgment by the designers gives it character and distinction. Observe the manner in which the exterior walls are divided by a belt, apparently cutting down the height, while the lower story is sided and the upper shingled. Timber brackets balance the overhanging roof, which is splendidly proportioned. The porch is unusual in shape and type, the longitudinal section being covered by a roof that partakes of the form and pitch of the main roof, but is relieved by the jutting gable covering that section of the porch floor projecting away from the front door. Square tapering columns supported by pedestals and joined by a well designed railing complete the porch.

Note the paired casement windows which afford excellent light to the interior. The upper gable windows are given an interesting touch by the little bracket-supported hoods. Living room, dining room, kitchen, grade cellar entrance, three bedrooms, bath

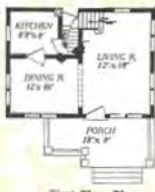




First Floor Plan  
The Georgia No. 2



Second Floor Plan  
The Georgia No. 2



First Floor Plan  
The Georgia No. 1

and closets constitute a complete housekeeping establishment. And everything about this home gives a feeling of quality and refinement. The living room occupies one end of the home, having light from three sides. The handsome stained staircase leading to second floor is placed at the far end of the room. The wall space at the left of the stairway provides an excellent space for piano or large Davenport, leaving a wide stretch of space in the balance of the room, preventing a crowded appearance. The dining room directly adjoins the living room, being separated by a wide cased arch. You will be well pleased with the dining room, as it is of good size and made pleasant by the handsome grouped casement windows on two sides.

The kitchen of the Georgia has attracted many housewives on account of its convenience. The grade cellar entrance makes it possible to enter the basement from the outside of the house without passing through the kitchen.

The pleasant and cozy rooms in the Georgia are made very attractive when finished in the beautiful Oregon Fir. This beautiful wood is furnished for interior finish in all Aladdin Homes.

One purchaser alone erected ten Georgias in 1915, an unusual tribute to its popularity.

There is much information about the Georgia home in a special issue of Aladdin's Magazine, a magazine for home builders. This entire issue of twenty pages is devoted exclusively to the Georgia home. Many photographs are shown—interior, exterior. One interesting feature that has proven very popular is a series of photographs showing different stages in the erection of the Georgia. Then, too, the housewives have taken great interest in the kitchen efficiency article for the Georgia home. A copy of this issue will be sent you free upon request.

For prices of Georgia No. 1 and Georgia No. 2 refer to inside of front cover. See General Specifications on pages 12 and 13. Detail specifications for the Georgia will be sent on request. See Terms on page 2.



Second Floor Plan  
The Georgia No. 1



Front View of Georgia



Rear View of Georgia No. 2



## The Herford

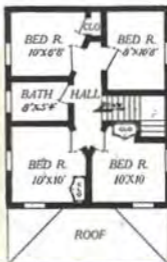
See prices on inside of front cover.

**T**HE Herford is an achievement in building a two-story, four bedroom house at a price less than fifteen hundred dollars, yet the convenience and attractive appearance of this design is not impaired in the least. It is of the ever popular square type which gives an air of size and massiveness. Although the Herford is designed along conservative lines, it is not commonplace or plain. The hip roof and broad belt dividing first and second stories are always favorable touches that are in keeping with the design. The interior of the Herford will surprise you—the fact that it is a larger home than you expect could be possible at the price, is impressed upon you when you note the number and size of rooms.

A large living room across the entire front, large square dining room and kitchen make an exceptionally convenient and roomy first floor plan. The second floor has



First Floor Plan  
The Herford



Second Floor Plan  
The Herford



four bedrooms and bath, with clothes closets. The large porch across the front and the grade cellar entrance, are features of this design seldom found in a house at this price. Handsome front door with three-quarter length glass and wide window front the house. You couldn't possibly better the design and arrangement of the Herford, try as you might, and it would be utterly impossible to find better lumber than is furnished, for it doesn't grow in any forest.

The carefully built semi-open stairway with circle first step, newel post and beautifully grained Fir lumber add a pleasing tone to the interior woodwork. All woodwork is very carefully sanded and ready to receive the stains and varnish.

See Terms on page 2 and General Specifications on pages 12 and 13.

For price refer to inside of front cover.





*Living Room - The Georgia Model*



*Dining Room - The Georgia Model*



*Dining Room - The Kentucky Model*



*Living Room - The Kentucky Model*





# The Erie

See prices on inside of front cover.

**T**HE ERIE! Isn't it a little jewel? Here is a real bargain. Here is a home that will be a great credit to you, to your building spot, to any location. How can we manufacture and sell this ideal home at this price? Here's the reason. Stop and think that your order is received today and enters the mill. Tomorrow it is rolled out of the mill yards and is on its way to you. Probably the same train has three or four more orders going in the same direction. Your house is but one of the many that leave the Aladdin mills each day, because Aladdin sells at wholesale prices and saves you the dealers' profits. Many a man of moderate means would like to own his little home, but the dealer's price is too much, and it is difficult for him to engage carpenters. To all such the Aladdin Read-Cut System is a blessing because they can build it themselves at a cost of simply their own time plus the cost of the material, or they can have it put up in a few days by day labor.



Floor Plan  
The Erie

This little home of three rooms and attractive porch is a beauty. It is warm and strong—is built of the same high grade material as the larger Aladdin houses. Two men with no previous experience, following Aladdin's instructions, can erect this house in four days' time. You will take great pride in this Aladdin home—the Erie. The Erie and Selwyn will be furnished in size 20x24 feet instead of 16x20 feet as shown in these plans at an additional cost of \$96.00 net.

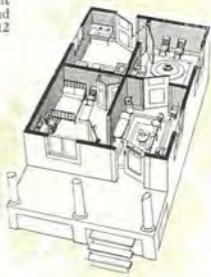
For prices refer to inside of front cover. See Terms on page 2 and General Specifications on pages 12 and 13.



Floor Plan  
The Selwyn

# The Selwyn

The Selwyn is the same as the Erie, except it has four rooms instead of three. For prices refer to inside of front cover. See Terms on page 2 and General Specifications on pages 12 and 13.



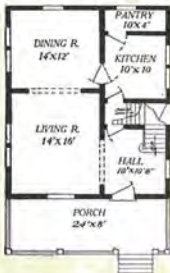


## The Hudson

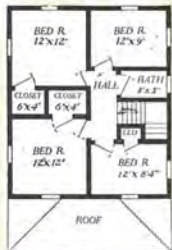
See prices on inside of front cover.

**C**AN you imagine a better utilization of space than is obtained in the plan of the Hudson? The constant thought of Aladdin designers is toward giving a maximum of convenience and comfort for the lowest possible cost. It is doubtful if this result has been exceeded by any other Aladdin house. The exterior will please you, we are sure, as this home has a greater number of admirers. The design is practical and conservative with no sign of over-trimming being evident. Simple lines in the porch construction, heavy overhead boxing, and roof are in perfect harmony with the balance of the home. The windows of both first and second story are treated somewhat differently from the average. On the first floor the windows are capped by the wide belt dividing first and second floor. The windows on the second floor line up to the trim board under eaves.





First Floor Plan—The Hudson



Second Floor Plan—The Hudson

The wide belt dividing first and second stories adds much to the general appearance of the Hudson.

Notice the hip roof dormer on the front roof. It helps break up the flat, plain roof. Study the location of rooms and the placing of doors and windows. Hudsons have been erected in many cities and towns about the country and you may be sure that each creates much favorable comment by friends and neighbors of the owners. The arches dividing hall, living room and dining room give an impression of size and space that is most desirable. The reception hall permits direct access to kitchen, living room, or second floor. Ample light for hallway and staircase is provided by full size window and three-quarter length glass in front door.

By referring to the plan you will find there is a stretch of space twenty-eight feet thru living room and dining room. The large living room, size 14x16 feet will prove interesting to you with the many possibilities for attractive furniture arrangements.

Entrance from hall to kitchen saves the housewife many steps. Four good bedrooms, closets and bath are arranged on the second floor. Four Colonial columns support the porch roof and a beautiful glass front door throws light into the hall, in addition to the side window, and the woodwork and floors are of beautiful grained lumber, which is subject to any treatment you like. To lovers of simplicity in home architecture the Hudson always appeals strongly.

We have many interesting letters from Hudson owners telling of their experiences, cost of erection, and length of time in building. We will be glad to send you copies of these letters or will send you names and addresses of owners nearest you. In this way you can write and learn at first hand of their complete satisfaction.

For prices refer to inside of front cover. See Terms on page 2. See Specifications on pages 12 and 13.



# The Princeton

See prices on inside of front cover.

**A** COSY, comfortable, convenient, warm home; that exactly describes this remarkable house. It is as good a building in every sense of the word for its size as money can buy. It is designed and built exactly like any good contractor would build it. Identically the same beautiful interior finish and knotless lumber goes into the construction of the Princeton as into our most expensive houses. It simply cannot be surpassed. This house can be put up and completed by two inexperienced men, ready to be papered and painted in about ten days. This is possible because every stick is cut the right size and ready to be nailed in place, and because our instructions and drawings are so complete that no sawing, figuring or fussing is necessary. Every piece in the house is marked to correspond with the drawings. Study the floor plan and see how conveniently the house is laid out. Note the arch between living room and dining room, large porch, the cellar entrance, etc. A careful study of the arrangement of rooms will show convenience at every point.

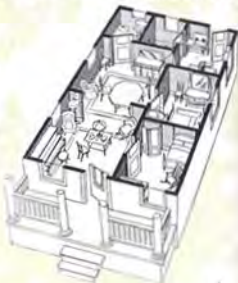
For price of the Princeton refer to inside of front cover. See Terms on page 2 and General Specifications on pages 12 and 13.



Floor Plan  
The Princeton No. 1



Floor Plan  
The Princeton No. 2

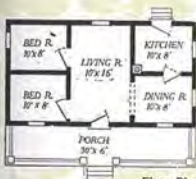


# The Gretna

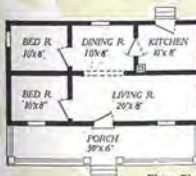
See prices on inside of front cover.

**H**ERE is a complete five-room dwelling with all the beauty of simplicity of design. It has appealed so strongly to home builders and has met their needs so satisfactorily that you will find

Gretnas scattered throughout the length and breadth of the land. It has been and is one of our very best sellers. The demand for it is constant. It is particularly desirable where ground space is not too expensive, as its width of thirty feet really requires a lot of forty feet or wider. Its long porch and sash door give charm to the exterior, while the large living room, bedrooms, dining room and kitchen furnish as convenient and desirable an interior arrangement as can be had in a home costing much more money. Throughout you have the same excellent construction that is found in every Aladdin house, yet the lines of construction are so simple that scores of Gretna owners have built their entire house without any assistance from carpenters. The Gretna is distinctly a house for the home-loving man of moderate means, because without sacrificing attractiveness, convenience, or essentials, the cost has been brought within the reach of all. Either floor plan shown will be supplied at the same price. For prices of the Gretna refer to inside front cover. See General Specifications on pages 12 and 13 and Terms on page 2.



Floor Plan  
The Gretna No. 1



Floor Plan  
The Gretna No. 2



# Department of Service- Aladdin

**D**ID you ever really consider the wonderful difference in the meaning of the words house and home?

A house is a structure to live in.

Home—the dearest place on earth—is that structure that is a part of you—made so by its association with your family, their joys and sorrows, their hopes, aspirations, and fears. It is a refuge from the trials and struggles of the outer world. It is a visible expression of yourself, your tastes and character.

*SERVICE!*—that golden touch which changes the ordinary into the artistic.—It is that which is not bounded by the sale, but is added to complete or round out the transaction.

Aladdin's interest does not stop when the order has been received—but ever bearing in mind the many nice discriminations to be made in the locating, adorning and surrounding of the home, the Department of Service was early established—to advise, direct or take full charge, as the home builders may desire, of this part of home making. As we have so often said, it is the use of such skill that changes a place to stay,—a *house*, to the dearest place on earth, a *HOME*.

Perhaps you find it difficult to express your tastes, as you feel them, when it comes



# Conducted for Home Owners

to the arrangement, furnishing, and decoration of your home. You may not be sure of yourself. Right there is where our Department of Service can help.

This department is in the hands of people trained in the planning and arrangement of artistic exterior and interior effects for the home—design, decoration, landscaping, etc. It is organized and maintained for a single purpose—to serve our customers. There is no charge for this service.

If you have a general idea of color in the exterior painting plan that you would like to follow, let the service department work out the details. In the interior finish and wall colors you may either put the responsibility entirely up to the department, or by suggesting general preferences, it will work to your suggestions and carry out the details.

By furnishing the department with the size of your grounds, sketches will be worked out for attractive planting of shrubberies, plants, trees, etc., with lists of seeds and vines.

In fact, the Department of Service will help to make your Aladdin house *home*, in every sense possible.

In seeking this service you have only to address the Department of Service, care of this company. The service this company renders its customers in decoration and planting would cost from fifty dollars to five hundred dollars if you consulted the average landscape architect. It is but one of the links in the chain that forms such a close bond between our customers and us.

## The Passing of the Pantry

Of the many conveniences efficiency has bestowed upon the housewife, the greatest and perhaps the most noticeable is the kitchen cabinet or kitchenette which replaces the old pantry. The majority of us, no doubt, can remember the old-fashioned pantry in which was stored a host of things—potatoes for the winter, preserves, fruits, barrels of flour, ice-chest, table leaves, brooms, etc.—in fact, the pantry was a sort of catch-all—a rendezvous for a large variety of articles. At times, it was so overcrowded as to make it difficult to get thru the door.

But when efficiency entered, she swept aside the old-fashioned pantry with its multitude of things, and in its place arose the bright, sanitary and convenient kitchenette, a boon to the housewife and to sanitation.

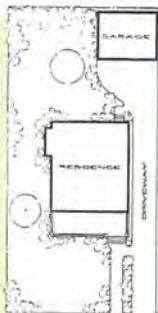
The new and modern kitchenette accomplishes fully as much, if not more, than the old pantry did. It is convenient and sanitary, takes up less space than the pantry and saves the housewife hundreds of steps each day. No longer is it necessary for her to bring supplies back and forth from the pantry to the kitchen table. She may now sit at her cabinet with its work table and have at her finger's end the materials for a meal, as there is place for all necessary utensils and raw materials, such as flour, sugar, tea and coffee, spices, canned goods, bread-box, etc. And isn't the kitchen, rather than the pantry, the proper place for the preparation of meals?

Therefore, the majority of efficient housewives of today object to the annexation of a pantry to their kitchens, preferring the advantageous kitchenette in its stead.

Thus, efficiency has completely eliminated the old-fashioned pantry and has placed before the housewife a most commendable substitute—the modern kitchenette.

Aladdin kitchens are planned expressly for efficiency and step-saving.

In line with Aladdin's usual service to the builder you can secure the co-operation of a household efficiency expert to help you arrange your kitchen. This service is free, of course, and is offered you on any home you may erect from the Aladdin catalog. Large or small, the kitchen needs much thought and that is why this added help of Aladdin's to his builders has found so much favor.



Example of Plan Furnished by Landscape Branch







# The Florence

See prices on inside of front cover.

**P**RIDE of ownership! The very attitude of every member of the family in this picture denotes pleasure and satisfaction with their home: even to the extent of painting a small, neat name, that all who pass may know. The Florence is quite extraordinary in the almost universal appeal it has on observers. It is as clean in outline as a Greek temple and surely as pleasant to look upon as any home could be. To the lover of simplicity the Florence has a strong attraction, its well balanced and commodious porch, finely proportioned roof and dormer window, wide front windows and shingled gables all being in perfect harmony. And the material from which the whole is moulded is all as perfect as can be taken out of the forest. The owner has no lingering memories of paint covered defects to spoil his pride of ownership. The siding, the trim, the shingles, and the porch work are entirely free from knots or other defects.

The interior will appeal to the housewife. It rather surprises you to learn that there are three fine bedrooms, giving a large family ample accommodations. Living room is centrally located, which is much desired by many families. The bathroom is well placed, while the kitchen is made more roomy by a light pantry. Well placed cellar stairs give access to the basement from the kitchen. Beautiful floors and woodwork distinguish all Aladdin houses and of course give the finished effect to the Florence as to all our other designs. Refer to inside of front cover for prices. See

Terms on page 2, and General Specifications on pages 12 and 13.



Floor Plan  
The  
Florence





First Floor Plan  
The Yale



Second Floor  
Plan  
The Yale



**T**HE full realization of a complete home is gratified in the Yale. The judgment of Aladdin designers has been wonderfully approved in the hundreds of sales of this design. When you fully comprehend all that it offers, you will be as enthusiastic about it as every customer who is living in it.

Harmony of design and proportion first strikes the eye. With a width of twenty feet, making it adaptable to narrow lots, it accomplished a two-story plan without its height being apparent. Four gables afford a surprising amount of room in the second story. Concrete pedestals support square porch columns and the long balusters of the porch railing are different from the usual type. A beautiful front door leads into the living room which extends full width of the house. Arched opening separates living room from dining room. See photos bottom page 63. Kitchen, cellar way and rear porch complete the first story. On the second story are found the bedrooms, bath and closet. You will be delighted by the selection of the Yale and especially the surpassing beauty of the interior woodwork which lends itself to the most interesting decorative schemes. Our Wood Stains and varnish permit your taste to be realized to the fullest extent. For price of the Yale, refer to inside of front cover. See General Specifications on pages 12 and 13. Complete detail specifications for the Yale will be sent on request. See Terms on page 2.



*The Yale*

See prices on inside of front cover.



Floor Plan  
The Sunshine

**T**HIS charming bungalow nestling in this setting of trees represents one of the best pieces of work of our master designers.

Individuality is portrayed in all its lines and it is distinctly American in character.

Extreme simplicity is the motif behind the planning of this home.

Simplicity implies character, quality and taste.

Sunshine implies cheerfulness, happiness, prosperity and light.

Could a more fitting name than "Sunshine" be given to this home?

It radiates that sweet, simple home atmosphere everyone wishes to secure in their home and to see in the homes of others.

The roof lines are particularly graceful, the main roof extending down over the porch. It being evenly balanced by a dormer of just the right proportions.

A study of the interior reveals an exceptionally well laid and thought out plan.

Light in any home is an essential feature and we have provided an abundance of it in every room. The large living room gives access to the dining room and front bedroom, as well as small clothes closet. See page 35. The opening between the living room and dining room is a prepossessing cased archway. The fireplace and outside chimney are shown in the photograph and floor plan although it is not necessary that you build these should you favor this house. The two back bedrooms have regular closets built off of them.

At the rear of the bungalow one of our regular Addition No. 4 is furnished, this providing for a combined cellar and rear entrance.

If the "Sunshine" appeals to you, write us so we can send you still further details. Refer to inside of front cover for prices. See Terms on page 2. Specifications on pages 12 and 13.



# The Sunshine

See prices on inside of front cover.





# The Colonial

See prices on inside of front cover.

**T**HIS modern home with its distinctive features has a large number of admirers. The general appearance, both design and arrangement of detail, place it in a class of its own. The general lines are taken from New England and Southern Colonial architecture, while many original ideas are added.

The windows, with divided lights and simple dormers breaking the front roof, are purely of New England origin, and are often referred to as "severe, simple and quaint."

Credit is due Southern designers for the semi-circle porch and front entrance detail. By closer inspection you will notice that the heavy front door is balanced on either side by side-lights. The detail in both door and side-lights harmonize, as both have glass in upper half. Besides the decorative value of this feature it is practical in that it provides a flood of light in the reception hall, lighting stairs and passageways. The semi-circle porch with balcony effect is supported by four large turned columns.

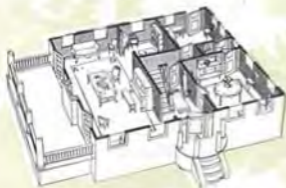
The broad and spacious side porch is also of interest. It is one of the most typical features of Colonial architecture. The balusters and rail are extended around the porch, entrance to be had from the two side doors in the living rooms on either side of the fireplace or from the steps at the side.



First Floor Plan  
The Colonial



Second Floor Plan  
The Colonial



The Colonial is shown here with terrace breaking abruptly a short distance from the front. This is another Southern feature that is proving very popular among builders of better class homes today.

The interior expresses modern ideas. The large size porch is an excellent summer season auxiliary to the living room, as both run parallel, with entrance doors on either side of the fireplace. The living room is arranged at one end of the home. The size, 15 feet wide by 30 feet long, offers many opportunities for different and tasty arrangement of furniture. The fireplace which is shown in the plan adds much to the comfort and attractiveness of the room and is well located. The library which directly adjoins living room has excellent wall space for bookcases and library furniture. The location of this room makes it suitable for either library or den. The arrangement of dining room and kitchen is ideal. The dining room at the front right corner and kitchen at the rear are divided by butler's pantry.

The kitchen in this design has received considerable thought. Notice that you are able to reach front entrance through the hall to reception hall without passing through the other rooms. Double action doors prove convenient between kitchen and dining room. From the reception hall you can pass directly into the living room or dining room or into the kitchen. Four corner bedrooms on second floor are well ventilated and easily accessible to hallway and bathroom. This home is fascinating in appearance and has much of the sought-for distinction. Of course you will want to know a great many things about the Colonial, if this handsome home appeals to you; things that there is not enough space to tell about here. Upon request we will send complete detail specifications and go into all the interesting facts. Write us about your ideas.

For Prices of Colonial refer to inside of front cover. See General Specifications on pages 12 and 15. See Terms on page 2.



*Living Room -  
The Colonial*



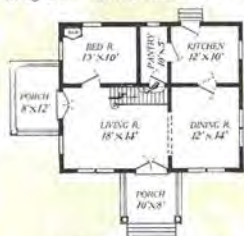
# The Strathmore

See prices on inside of front cover.

**T**HE Strathmore is different in design—it is a home of individual tastes. By noticing the photograph you will find that the special details are arranged in groups—double doors in front entrance, double windows balanced on each side, triple windows in dormer above. The double door feature owes its origin to architecture that was real popular in Colonial days. Today it is again coming into general favor in the largest and highest class homes on account of the pleasing effect it gives to both the interior and exterior of the home. The pergola porch at one side is another feature that pleases the average home-builder with modern ideas.

The interior arrangement will please you—notice the floor plan. The large living room is graced with a beautiful staircase. From the living room thru wide arch you enter the dining room with kitchen to the rear. One bedroom downstairs with three more and bath on the second floor make just an ideal home.

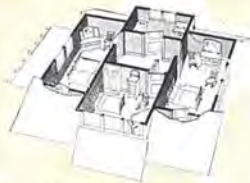
This design gives plenty of opportunity for home-loving folks to express personality and character in the decorations. This one pictured here was painted in white and trimmed in green. Excellent effects could be had by painting the house a lead gray or a yellow with white trim, or house painted in brown and trimmed with white. The living room—the one room that belongs to the entire family—could be papered or



First Floor Plan—The Strathmore



Second Floor Plan—The Strathmore



frescoed in deep brown with white ceiling. Space alongside of stairway would make a handsome setting for a davenport, wide seat, or a piano. Of course, everyone has ideas for the decoration of their new home, and to help them, the Aladdin Department of Service will gladly send many more—and this free of charge. Let us help you plan this ideal home—the Strathmore—for your home.

By referring to page 101 you will note the style of interior door that is furnished for Aladdin Homes. These doors, as well as the interior finishing material for all Aladdin houses, are made

from the most select of stock which is the beautifully grained Oregon Fir. Possibly no other wood is as attractively grained as Fir, and few other materials can be decorated as richly.

Many different stains can be used on Aladdin Fir with great success, among which are light and dark oak and dark mahogany.

Send for complete detailed specifications of the Strathmore which are sent upon request. A complete itemized list is given of everything entering into the Strathmore home.

For prices of the Strathmore refer to inside front cover. See Terms on page 2 and General Specifications on pages 12 and 13.



*Dining Room - The Dresden*



*Living Room - The Dresden*



*Interior View - The Dresden  
"Just as you step in the Dresden Door"*

# The Tucson

See prices on inside of front cover.

**W**HEN it comes to much in a small space the Tucson certainly leads. Five convenient, well lighted, attractive rooms, with good sized front porch make up this snug and cosy little home. Sash front door, semi-open stairs and wide arch between living room and dining room add materially to the attractiveness of the Tucson. Where the exterior is painted either a French gray or seal brown and trimmed with white or cream, and the beautifully grained interior fir trim is either finished with oil or stain and then varnished, the Tucson presents a fresh, attractive appearance that invariably brings pleasure and satisfaction to its owner. (Rear addition shown in photograph not included. See pages 104-105.)

The Tucson is one of the first Aladdin designs and has always proven exceptionally popular. The first year it was listed in the Aladdin catalog it was sold to four different parties who have built the Tucson again after the first one was complete.

A number of companies have erected this house in large numbers. One customer in 1913 erected sixty-four.

At the price quoted in price list you save between \$150 to \$275 on the material and erection of the Tucson. The material is prepared from carefully drawn plans—and without waste. Hence you pay for no lumber that is wasted in sawing or fitting on the ground. Your carpenters will be able to erect it much faster. This saving is also noticeable, as it usually cuts down time of erection a third.

Send for complete detailed specifications of the Tucson which will be sent to you upon request.

For Prices refer to inside front cover. See Terms on page 2 and General Specifications on pages 12 and 13.



Second Floor Plan  
The Tucson



First Floor Plan  
The Tucson







# The Winthrop

See prices on inside of front cover.

**C**AN you imagine this bungalow nesting among trees and shrubbery on your own lot? A few cobblestones are gathered from nearby fields and when bleached with brown stained shingles, natural shrubbery and a setting of velvety green, the observer is fascinated.

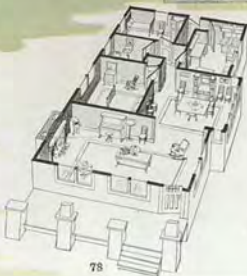
A bungalow should always be set close to the ground. When local conditions seem to make this impossible, the same results can be secured by terracing close to the building.

The Winthrop is of the pure bungalow type—low, a touch of rough stones, bracketed eave supports, heavy timber work, shingles, and broken outlines.

And as the real bungalow is always compactly and

conveniently arranged inside—you will agree that the Winthrop is typical. The large living room is lighted by three group windows and the fireplace at the end forms an inviting nook. Extra length is secured to the dining room by the interesting bay window. Lots of wall space is available in the front bedroom. The centralized hall, and entrance from dining room, kitchen, bath and bedroom is a good feature. Could a bathroom be better located than this? Can you help falling in love with this interesting bungalow?

For price of the Winthrop refer to inside of front cover. See General Specifications on pages 12 and 13. Detail Specifications for the Winthrop will be sent on request. See Terms on page 2. Masonry is not included.



Floor Plan—The Winthrop

**E**ACH year the sales of this attractive semi-bungalow far exceed the preceding year, and best of all, its rapidly increasing number of owners are invariably delighted with their new home. We wish you could read some of the entertaining letters, without solicitation, received from scores of Marsden owners. They will of course be sent on request. Just study the lines of this bungalow and note how artistically appointed is every part—the straight line dormer with exposed eaves in exact keeping with the eave of the front porch—the extended bay window with roof and brackets, looking the globe end—the windows of different sizes and styles and location—these and many other points make the exterior of the Marsden truly artistic.

In interior planning and arrangement, this modern bungalow presents what might well be said to be the last word in designing. On entering the large living room, 20x18, extending across the entire front, one is attracted by the beautiful bookcase arch separating the living and dining rooms. Beautiful in itself, yet this arch by means of its glass doors and adjustable shelves forms at once a convenient, attractive and useful piece of house furnishing. Notice the abundance of light in living and dining rooms. A well arranged kitchen with stairs leading to grade landing complete the first floor. According to the second floor by the semi-open stairs at the end of the living room, one enters a central hall from which easy access is gained to each of the three large bedrooms and the bath. Please note the clothes closet with each bedroom—a most appreciated adjunct for every sleeping room. For price of the Marsden refer to inside of front cover. See Terms on page 7 and General Specifications on pages 12 and 13.



First Floor—Marsden

Second Floor—Marsden



## The Marsden

See prices on inside of front cover.

# The Finley

See prices on inside of front cover.

**W**HILE the Finley is popular with the owner of any sized lot, yet it finds special favor in cities where lots are sometimes as narrow as 30, or even 25 feet. The Finley can be built very nicely on a 25-foot lot and still leave ample space for a walk on either side.

In the Finley the designer has followed throughout plain, straight lines, yet when painted French gray or leather brown and trimmed in white, the owner of the Finley is invariably delighted.

A large, pleasant front porch, six rooms, bath and closets are found in this remarkably low priced house. The ever popular plan is followed of a large living room across the entire front with wide archway leading to dining room. By a double-action door one enters the kitchen direct from the dining room. An attractive semi-open stairs leads from living room to second floor where there are to be found three sleeping rooms, bath and closets. Those wanting a six-room, two-story plain house are invariably pleased with the Finley.

On an average, owners of the Finley claim savings of \$200 to \$325 on their homes. These estimates include savings on cost of material, also savings on cost of labor. When you receive the material it is entirely cut-to-fit, ready for erection. You pay for only the actual material used in building your home—no more. Now, think of the good lumber that is wasted in building the old-fashioned way. And you also pay for the extra labor which is unnecessary building an Aladdin.

See Prices on inside front cover. Also Terms, page 2, and General Specifications, pages 12 and 13.



First Floor Plan  
The Finley

Second Floor Plan  
The Finley



# The Duplex

See prices on inside of front cover.

**T**HE Aladdin two-family house. The Duplex is produced as the result of a large demand we have had for a double house. The double house has some very attractive features. It enables its owner to live in one part and secure a good rental from the other, his return is consequently much greater than if he had built two separate houses. Besides this, the double or two-apartment is a necessity where ground space is costly and homes scarce. The Duplex design has none of the disagreeable features so common in two-apartment homes. Both first and second floors are complete homes in themselves with separate front and rear entrances. The floor plan gives one an idea of the convenience and comfort to be had for both occupants of the Duplex. Both floors contain living room, dining room, kitchen, two bedrooms, bath, pantry, front and rear porches. One Aladdin customer who has erected three Duplex apartment houses says the completed cost of each of his Aladdin buildings showed a net saving of \$560 each.

For Prices on the Duplex see inside front cover. See Terms, page 2, General Specifications, pages 12 and 13.



First Floor Plan  
The Duplex



Second Floor Plan  
The Duplex



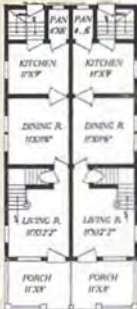
# The Devon

See prices on inside of front cover.

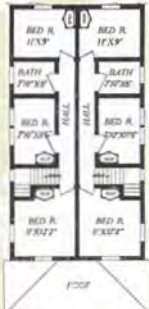
THIS plan of two apartment house is recommended in many cases on account of the width which enables you to place it on a 28-foot lot and still provide space at one side for a combination driveway and sidewalk. The plan shows living room, stairway, dining room, kitchen, grade cellar entrance and pantry on the first floor. The second floor contains three good sized bedrooms, bath and hall. This arrangement proves popular among tenants, and sufficient space is provided for the average needs. Both apartments have front porch and front

entrance and separate grade cellar entrances at the rear of the house. This apartment has proven an exceptionally popular seller and we have received many repeat orders after the first house was erected. Send for complete information on this house, also detailed specifications.

For Prices of the Devon see letter on inside front of cover. See General Specifications on pages 12 and 13. See Terms on page 2.



First Floor Plan  
The Devon



Second Floor Plan  
The Devon



# Heating Lighting and Plumbing Service for Aladdin Builders

To help you to build your home in a most economical and satisfactory manner is the desire of the Aladdin Co. Whenever the business connections of Aladdin can render you a service either in a saving of money or a better quality in the article, Aladdin is anxious that you enjoy the benefit of the same.

For many years we have helped builders save money on heating, lighting, and plumbing fixtures, and again we offer our builders this service so that they may secure equally high quality in their home accessories as the high quality of the Aladdin Home itself. And it is also possible for Aladdin builders to secure these fixtures for their new

## Electric Lighting



Fixtures

Aladdin Home at savings in price.

A special booklet has been issued illustrating different types of fixtures at different prices. A copy of same will be mailed to your home upon request.

Three types of heating plants are offered you—warm air, steam, and hot water systems. The smaller houses the Aladdin Pipeless Furnace is a most satisfactory heating system. Its first cost is less than that of a base burner. It is easily installed and has every advantage of the larger, more costly heating systems at a great saving in price. It is also a fuel saver and we recommend it after having carefully watched its performance in the homes of more than 10,000 Aladdin Home owners.

Another warm air heating system—the Pipe Furnace can be secured through Aladdin co-operation. A great number of our home owners are using it now and find it has features that are found in no other furnace.

Steam and hot water boilers that we do not hesitate recommending highly can be secured at a great saving. The booklet illustrates eight groups of electric lighting fixtures very reasonably priced. The bath-room fixtures that are shown are highest grade in quality and an excellent assortment in selection is offered to you.

This department of the Aladdin Co. is purely one of service. The Aladdin Co. is incorporated purely to help people

## Bath Room Accessories





**Pipeless Furnace**



**Warm Air  
Furnaces**



## Heating Plants



**Steam and**



**Hot Water  
Boilers**

build better homes through our system of construction. It is our conviction that our duty to you has not been fulfilled until your home is completed in a most satisfactory manner and is ready for occupancy. That is why we offer you these home-building fixtures so that you may secure as high a quality as you have purchased in an Aladdin Home and at an equal saving.

Send us a post card request for a copy of this book. It will be sent by return mail.

## Complete Bathroom Outfits



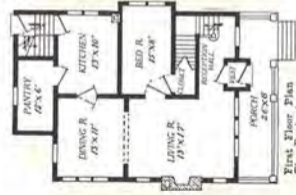


## The Rochester

**T**HERE is much to interest the home builder in the Rochester home—a very popular Aladdin design. Covering a period of five years' time since it was first included in the Aladdin Book, its popularity has been widespread. It was first erected in northern Minnesota in the spring of 1911. The owner of this Rochester is very high in his praise of the warmth of Aladdin construction and the handsome appearance of this design. Since that time, the Rochester has been erected many times in nearly every state in the Union. One state now has nineteen Rochester homes within its borders.

In design the Rochester is truly American—simple, strong and substantial. Conservative lines bespeak dignity and personality of which this design is a shining example. Its features are not composed of novelties that come and go, but are made up of the careful touches that have stood the test with home builders for many years. The Rochester has the added advantage in point of design of being square in shape, which always expresses massiveness and strength. While the exterior is simple in design, yet it is not commonplace or uninviting. The scrolled rafter ends

See prices on inside of front cover.

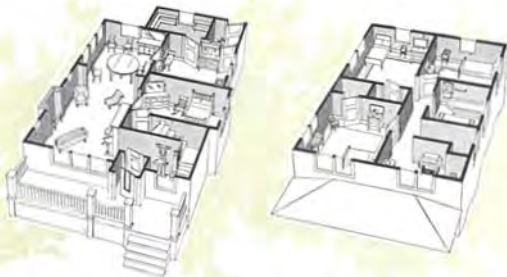


First Floor Plan  
The Rochester



Second Floor Plan—The Rochester





studding the eaves of house, dormer and porch roofs, add an artistic touch without giving it an overburdening of trimmings. Still another distinction noted in the Rochester is the window arrangement. Grouped in pairs in most cases they add strength to the design of the exterior and provide an abundance of light to all rooms on the interior.

In planning a home, the housewife, besides giving deep thought to the exterior appearance, takes a greater interest still in the interior arrangement. Housewives in general have placed their stamp of approval on the interior of the Rochester. The arrangement is ideal—convenient and comfortable, minimizing housework. Note the vestibule, large living room with cozy bedroom having projecting bay window, group window in dining room, large pantry attached to kitchen, and rear exit grade cellar entrance.

On a one-thousand dollar lot the Rochester would normally sell for at least \$5,500. You can easily comprehend the profit available to the owner should conditions arise that he would want to sell it. Owners of Aladdin houses find that the high quality of finish, material, both inside and outside, helps make quick sales when a sale is desired.

For Prices of the Rochester, refer to inside front cover. See Terms on page 2 and General Specifications on pages 12 and 13.



*Living Room and Dining Room—The Detroit*



*Living Room-The Boulevard*



*Dining Room-The Boulevard*



*Living Room-The Venus*



*Living Room and Dining Room-The Venus*

T

HERE is something very restful and satisfying in this artistic bungalow. The structural lines throughout are simple without excess adornment and in this lies the secret of its distinction.

There is a rooey front porch with the pergola roof effect terminating at one end with the steps. Except to mention the simplicity of the structural lines, it is quite impossible to intelligently define the popularity of this bungalow.

The interior of the house is planned so that the maximum of comfort may be had with the minimum of work. It is a pleasure to do housekeeping in this bungalow, as it is easy to keep the rooms clean and sweet.

The Roseland contains seven rooms conveniently arranged. The living and dining rooms are connected

by a pleasing cased archway (see Interior Illustration, page 59.) Each of the three bedrooms are furnished with closets. Should you intend to put a basement under the bungalow we would recommend using our addition No. 4 on page 105 of our catalog. Pergola roof porch is covered with matched slats, which provides shelter against rain without harming the effect of the design.

The cost of erecting the Roseland is small. When you receive the material it is all cut-to-fit ready to nail in place. All your carpenters do is the nailing—no sawing, no measuring, no cutting to fit. Besides, think of the saving in building an Aladdin—no waste material to pay for.

On file in our offices we have plans as basis for estimating costs. With this plan you will be able to arrive at an intelligent price for the Roseland home. It is impossible to give a fixed cost of erection for all localities, on account of difference in cost of labor, etc. Hence you are able to find the cost of the Roseland erected in your home town by applying local figures and using the tables shown on the Aladdin estimate sheets. A copy will be sent you upon request.

The prices refer to inside of front cover. See General Specifications on pages 12 and 13. See Terms on page 2.



SEE HOW SIMPLE AND BEAUTIFUL



The Roseland

See prices on inside of front cover.

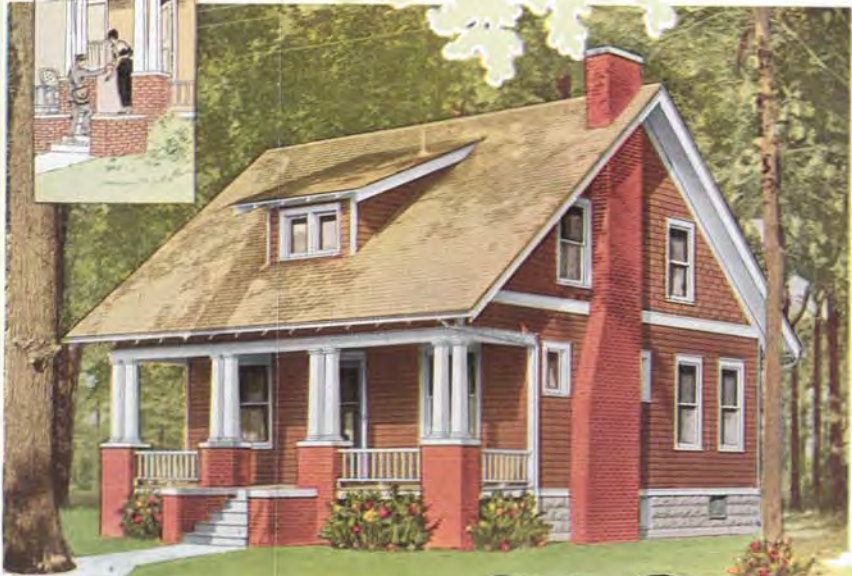
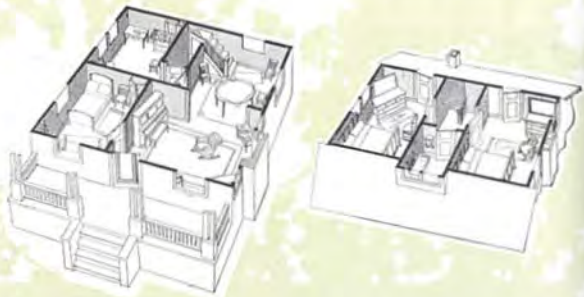
# A

N enthusiastic owner of this attractive semi-bungalow wrote saying: "The more I see the Detroit and the longer we live in it, the greater becomes our love for it. After a year, we cannot suggest how your architects could make it more attractive or your designers improve the arrangement. This I believe is exceptional, because usually after giving a house that most sure test of actually living in it, you have some improvement or changes you would make. We have none."

Who will not agree that actually living in a house is the best test? We believe that the longer you study the design and arrangement of the Detroit, the more fully you will realize why this owner has no improvements to suggest. Without being gaudy it is attractive, without being elaborate it is ample. No attempt has been made to embellish, yet you could not add anything without really destroying—in short the Detroit seems to stand complete—with nothing to add or leave off.

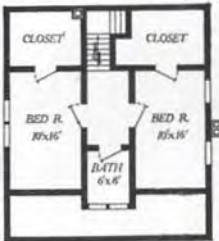
Notice how the porch extending the entire width of the house has been made not a seemingly attached part, but a real part by carrying over the main roof line, while the double porch columns seem to give just the right stability for this style of construction. Artistic grouping of different style windows; open corner, exposed rafters, straight line dormer, and an especially artistic porch rail construction seem to have nothing to be desired.

In interior arrangement the Detroit is equally pleasing. (See interior illustration on page 87.) The pleasant living room has opening off from it at the left, the downstairs sleeping room for those who wish, or the den or library for those that desire only sleeping rooms on the second floor. The well-lighted kitchen with abundant wall space is especially pleasing to the housewife. Notice the size of the bedrooms—each of which has a large clothes closet. For price refer to inside of front cover. See General Specifications pages 12 and 13. Terms on page 2.

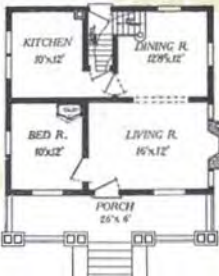


# The Detroit

See prices on inside of front cover.



Second Floor Plan—The Detroit



First Floor Plan—The Detroit

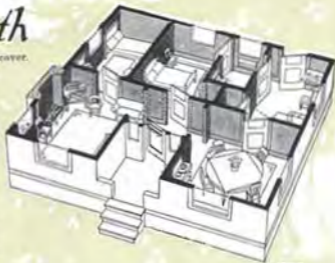
# The Plymouth

See prices on inside of front cover.

**S**IMPLE square lines have been here transformed into a charming home. The plan is quite different from anything else shown in our book, yet the arrangement of rooms, convenience and access, one room with another, is excellent. Note that the entrance hall gives access to three different rooms and is but a step from the kitchen. The living room is separated from the dining room by the hall, with a vista of two arches. Light is admitted to hall by windows on each side of front door. Two bedrooms, bath and kitchen complete this snug design. The exterior is shingled, and shows very wide eaves with exposed rafters. Although the chimney is shown on the outside of the house, it can be placed in any part of the home.

The most noticeable features to visitors of the Plymouth is the beautiful interior finish. When stained and oiled in the rich tones of oak the attractive grain in the fir finishing material contrasts handsomely with the delicate shades used for interior decoration. All the fir material used for interior finish in every Aladdin Home is carefully selected for the finest grain patterns.

For prices of the Plymouth refer to inside front cover. See General Specifications on pages 12 and 13. Detailed specifications of the Plymouth will be sent on request. See Terms on page 2.



Floor Plan—The Plymouth





## The Chester

See prices on inside of front cover.

**B**ROWN shingles trimmed with white distinguish this little home from the ordinary looking cottages found in most communities. The Chester is a trim, neat, compact and pretty bungalow. Its five rooms are nicely arranged, its porch roomy and every room is well lighted. Note the spacious, airy living room that stretches the full width of the house and gives a view in both directions as well as in front. Arch separates dining room while two bedrooms and kitchen complete the home. You are privileged to choose any colors of paint and stain for shingles and trimming for the exterior, and you can have the most modern ideas worked out in your interior decorations with the wide variety of stains, varnishes and paints illustrated on our color cards. Most owners of the Chester write us about the pleasure they derived from erecting and completing it themselves. You can do this easily. With every Aladdin House we send complete instructions and illustrations for erecting. These instructions are so carefully written that anyone not a carpenter could easily understand them. It tells you how to start the work, kinds of material to use and in most cases gives illustrations of different stages of the erection. This information is sent to you in book form—over 100 pages—and includes information on every part of the erection from the digging of foundation to the time it is ready for occupancy.

For Prices see inside front cover. See Terms on page 2 and General Specifications on pages 12 and 15.





# The Dresden

See prices on inside of front cover.

**T**HE DRESDEN will appeal to you as being an ideal home. The picture, which was taken on a midsummer's day, shows a number of features that are not found in the average home. Notice the porch—the shelter and relief it provides from the hot summer sun. Every inch of the one hundred and twenty square feet of floor space on this porch seems to hold a charm for the comfort seeker. And as much can be said of the inside of the home. Notice the picture, showing windows raised. It is possible to practically open up the home on four sides giving the utmost in ventilation, making all rooms light and airy, cool and pleasant.

Before reading further, look over the floor plan carefully. What do you think of it? Isn't it just right for convenience—doesn't it appeal to your ideas of "home?" Notice the long stretch—practically twenty-four feet—thru living room and dining room. The daylight rooms are arranged on one side of the home and possess every desired feature—plenty of light and air, spaciousness and ease in accessibility; adapted to any arrangement or setting of furniture. Plenty of space in the bed rooms with good closets in each, makes a home that will give you great satisfaction and much convenience. Your friends will agree with your judgment in selecting this home of homes—the Dresden. Turn to page 75 and notice the interesting views of the interior. For price of the Dresden refer to price list on inside of front cover. See General Specifications, pages 12 and 13. Detail specifications for the Dresden will be sent on request. See Terms on page 2.





# The Cadillac

See prices on inside of front cover.



**T**HIS bungalow is worthy of consideration because it was planned by one of our superintendents for a home of his own. It was made exactly as he planned it to suit his experienced sense, fitness and ideas. Thus an individuality was brought about that attracts the attention of every passer-by.

It is a home that is pleasant and has an abundance of space within for comfortable living and would give to anyone that possessed it a great pride of ownership.

The exterior is artistic and pleasing to the eye. The broad sweep of the roof carried out over the porch adorned with a dormer, breaking the wide expanse, is perfect in proportion and balance. The square divided lights in the upper sash of the windows lend an added charm to the exterior.

The main floor comprises a large living room entered directly from the porch. Off of this is a spacious dining room and den. Attractive French glass doors enable the owner to combine these rooms in one. The fireplace shown in the floor plan could be built in the opposite end of the living room, if desired, or could be omitted entirely.

Two bedrooms furnished with closets as well as bath and kitchen finish the floor plan. Directly at the rear of the kitchen is a very convenient and modern grade cellar entrance addition, giving access to the kitchen and cellar.

For price of the Cadillac refer to inside front cover. See General Specifications on pages 12 and 13. Detail specifications for The Cadillac will be sent upon request. See Terms on page 2.



Floor Plan  
The Cadillac





# The Edison

See prices on inside of front cover.



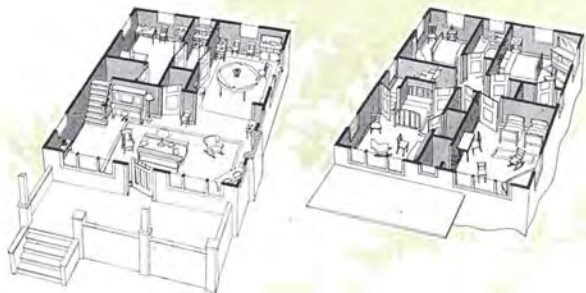
**B**EFORE reading this description, what did you think of the Edison? Well, it has impressed others the same way—as being one of the prettiest little bungalows ever built. And every owner is more pleased with the Edison after it is completed. When the beautiful lines of this home are fully realized—then it is possible to see the broad and expansive porch sweeping across the entire front of the house, also the careful formation of the roof covering the porch. And did you notice the broad eaves with exposed rafters? This feature seems to belong to this home alone. And the diamond divided lights in the upper sash are in complete harmony with the balance of the beautiful home. Study the interior, the arrangement of rooms. Isn't it ideal? The living-room and dining-room, divided by an archway, are really one big room, but still they retain the convenience of two. Each sleeping room affords plenty of air. The bathroom is well planned and is large enough for bathroom fixtures with plenty of space to spare.

For design, convenience and price, don't you think the Edison is the prettiest little bungalow you have seen? And when this bungalow is stained a dark brown and trimmed in pure white you have a most artistic and beautiful result.

For price of the Edison refer to inside of front cover. See Terms on page 1 and General Specifications on pages 12 and 13.



Floor Plan—The Edison



**D** ID you ever see a more beautiful picture of its kind than the one shown here? A mass of lights and shadows softening the greens, browns and grays of the foliage; shingles and cobbles delight the eye. You can almost feel the touch of the sunbeams patterning the lawn, and you just want to stroll up the steps and into the inviting shade of the porch. Most effectively has the pure white that borders every outline been used to contrast the deep brown of the shingled upper story.

The exterior of the Shadow Lawn is one that has appealed greatly to our customers. A slight diversion from the customary is had in the wide sided first-story with second story shingled.

Notice also the detail of the front of the Shadow Lawn. On both first and second stories grouped or triple windows are used in perfect harmony and balance.

The wide porch stretching across the front of the house is another feature that is desirable in a home of comfort.



## Shadow Lawn

See prices on inside of front cover.

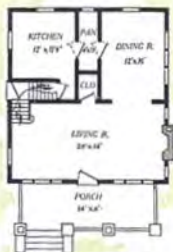


Examining further we find a living room of expansive dimensions, twenty-eight feet one way and fourteen feet the other. Matching the size of the living room is a dining room sixteen feet in depth and twelve feet broad; large enough for a real banquet. The kitchen, pantry and grade entrance occupy the other rear half.

The second story illustrates four bedrooms, bath and closets. Each bedroom is on a corner of the house giving free ventilation and an abundance of light.

The Shadow Lawn caves project four feet, rather a Swiss idea, and are supported by well proportioned brackets. The porte cochere at the left is not included in the price quoted. Should you desire it added to the home it is furnished ready-cut at the extra price of \$103.00. The Shadow Lawn is surely a home of most striking individuality.

For Price of the Shadow Lawn refer to inside of front cover. See Terms on page 2 and General Specifications on pages 12 and 13.



First Floor Plan—Shadow Lawn



Second Floor Plan—Shadow Lawn



## The Sheridan No. 2

See prices on inside of front cover.

**A**N unusually attractive exterior and a sense of roominess are features that make the Sheridan one of our most popular bungalows. The low, sloping roof, the scrolled eaves and shingled porch and step rails, together with the siding, permit a great latitude in the decorative scheme and with the use of harmonious painting and staining materials, these features can be developed in a most pleasing manner. The expansive porch, which extends across the entire front, is well shaded by the broad, overhanging roof.

The convenient and inviting arrangement of the several rooms are outlined at the left. Your attention is called to the square and good dimensions of all the rooms, especially the living room, with its attractive group windows and arch leading to the dining room. Divided square lights are furnished for upper square sash of all windows, although they will be furnished with single large glass if preferred. The kitchen is of ample size and has proven very popular among housewives. Pantry with window is situated off the kitchen. Three good sized bedrooms with closets complete the plan of the Sheridan No. 2.

See bottom of page 47 for interior photographs of the Sheridan living room and dining room.

Few moderately priced bungalows offer so many real home comforts as can be found in the Sheridan.

For Prices of the Sheridan No. 2 refer to inside front cover. See Terms on page 2 and General Specifications on pages 12 and 13.



Floor Plan—The Sheridan No. 2

# Interior Doors and Lock Sets

*Furnished with Every Aladdin Home*

THIS beautiful perfectly grained door with two panels and the five cross panel type door are furnished for every Aladdin House. A real hardwood, but softer than oak or birch. Hard enough to take a hardwood polish, but soft enough to work easily. Aladdin houses are finished better than most new houses in your neighborhood. We guarantee all your inside finish to be of exactly the same high-class material that this picture was taken from—clear lumber, beautiful grain—the best obtainable. Any stain furnished.

Here are some of the many beautiful details that are to be found in Aladdin Homes.

On careful inspection you will find that money cannot buy a better quality. Fir is distinguished for the wonderfully silky texture and softness of grain. You will never find two panels of the same design of grain and each one is an interesting study in itself.

The lock set trimmings for the interior doors are of the richest finished brushed brass.

The design on the escutcheon is an oak leaf pattern that stands in relief on the frosted background.

This beautiful lock set is made exclusively for Aladdin Houses.





## The Virginia

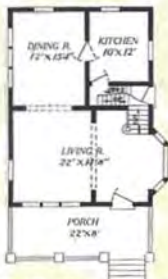
See prices on inside of front cover.

**H**ERE'S a home. From every view it breathes a welcome, inviting you into its big, strong, protecting walls to find comfort, pleasure, and satisfaction. From the front it strikes you pleasingly, and, as you approach, the impression is heightened by the finished detail of roof, eaves, columns, and porch work.

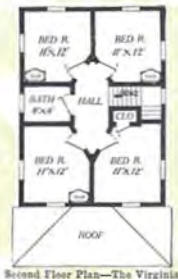
The exterior of the Virginia always pleases—the design being founded on conservative lines. The wide porch stretching across the front is always a popular feature, especially the one designed for the Virginia. Slender spindles are extended from the rail to the ground creating a very neat appearance. The bay at the side breaks the long straight sidewall, thus adding attractiveness to the exterior and providing a cosy corner for the interior. The special scrolled bracket which is used for decoration under eaves of house roof and dormer roof add a touch of beauty to the home.

The Virginia as shown here is painted gray with white trim. Many other attractive





First Floor Plan—The Virginia



Second Floor Plan—The Virginia

schemes could be used with equal or greater success. The belt dividing first and second stories suggests a dark color—possibly brown for second story and cream for first story, with white trim.

The Virginia is a popular design among Aladdin customers. It has been erected many times thruout the country. Owners are loud in their praise of it. Dr. Corn of Ohio, writes as follows: "The material was excellent and every piece fitted exactly."

Mr. J. F. Kugler of Pennsylvania, in a letter says: "I have saved between \$300 and \$500. I have a fine home—The Virginia."

Mrs. M. E. Lloyd, of Florida, who has erected two Aladdins, in a letter says: "Everything went together like clock-work. My Virginia is a fine home."

Just inspect the arrangement of the interior. A living room that stretches from the bay window on one side of the house to the other, twenty-two feet, with the dining room separated by a wide arch—a freedom and expanse usually found only in much larger houses. One of the most interesting features on the interior is the bay window. This is most usually converted into a cosy corner and fitted with window seat, sofa cushions, etc., making it the most popular spot in the home. The cosy corner in bay window and handsome open stairway make a pleasing impression on entering the home. Kitchen, four bedrooms, bath, and closets complete this beautiful home. It is built to satisfy the hardest to please. It is a continual delight to every owner.

For Price of the Virginia refer to inside of front cover. See Terms on page 2 and General Specifications on pages, 12 and 13.



Living Room and Dining Room—The Plaza

# Additions to ALADDIN Houses

Designed for use on any House

**T**HE additions shown on this page were designed to meet the demands which we have had in the past for additions to dwelling houses. Several different designs are shown so the purchaser may select one that will be best adapted to his requirements.

The exterior finish of these additions will be furnished to harmonize with the appearance of your house without extra cost. The prices are quoted with and without lath and plaster or plaster board, and interior finish of the enclosed part.

## Addition No. 1

Addition No. 1 can be used as a kitchen with pantry, or as an extra bedroom, as desired, or will be very well adapted for an entryway, with either pantry or bath.



Floor Plan  
Addition No. 1



Addition No. 1

| Size    | Net Price<br>without<br>Plastering | Net Price<br>with<br>Plastering |
|---------|------------------------------------|---------------------------------|
| 8 x 10  | \$80.00                            | \$90.00                         |
| 8 x 16  | 102.50                             | 113.75                          |
| 10 x 16 | 162.50                             | 175.00                          |
| 10 x 18 | 172.50                             | 187.50                          |
| 10 x 20 | 183.75                             | 200.00                          |
| 10 x 24 | 202.50                             | 247.50                          |

## Addition No. 2

Addition No. 2 has an enclosed part, which is suitable for a pantry or bath, and has an open porch.



Floor Plan  
Addition No. 2



Addition No. 2

| Size   | Net Price<br>without<br>Plastering | Net Price<br>with<br>Plastering |
|--|------------------------------------|---------------------------------|
| 6x14, enclosed part, 6x8<br>open part, 6x6     | \$85.00                            | \$90.00                         |
| 8x16, enclosed part, 9x8<br>open part, 7x8     |                                    |                                 |
| 10x18, enclosed part, 10x10<br>open part, 10x8 | 117.50                             | 126.25                          |
|  | 158.75                             | 171.25                          |



## Addition No. 4

Addition No. 4 is a simple enclosed, rear entrance with cellar stairs. It can, of course, be attached to any house as all material necessary to complete the addition is included. Paints for two coats of any color to match balance of house as well as nails, hardware, etc., are furnished at the price quoted. See floor plan herewith. Price, net, \$54.00.

## Addition No. 5

To meet the popular demand for sleeping porches and sun rooms, arranged for screening in summer and sash in winter, we are offering in Additions Nos. 5 and 6 two very convenient and practical designs which have found especial favor with our customers.

The Addition No. 5 is furnished in size 10x6 ft., two stories high. This size is excellently adapted for average usage. The upper porch is large enough for a double bed, or two single beds, or three cots.

The popularity of the sleeping porch needs no comment here. This makes a splendid addition to any home. Screens are furnished for all openings and screen door.

The price, net, \$125.00, includes paints for two coats outside, oils, stains, and varnishes for inside finish.

Any colors of paints can be furnished for outside body and trim to correspond with balance of house.

## Addition No. 6

Addition No. 6 is furnished in size 14x7 ft. The sleeping porch will accommodate two double beds, nicely, while below you have, in addition to the open porch, an enclosed part, size 8x7 ft., which can be used for a pantry, bath, store, or fuel room, door to open into the enclosed part, either from porch or kitchen.

Price, net, with screens for all openings and screen door, \$187.00. This price includes inside walls finished with matched material. Price also includes paints for two coats outside and oils and stains for inside finish.

Any colors of paints can be furnished to correspond with balance of house.

If enclosed part is wanted finished inside with lath and plaster, add \$15.00 to above price.

Prices on glazed sash for sleeping room to be used in winter will be furnished upon application.



Addition No. 4



Floor Plan  
Addition No. 4



Addition No. 5



Addition No. 6

# ALADDIN Colonnades and Arches



This "Homecraft" Bookcase Arch has been used in thousands of homes and in every case has given perfect satisfaction. The cases are 2½ ft. wide, the columns 8 in. square. Made of Yellow Pine, Oregon Fir or Selected Oak, sent out unfinished, but complete with hardware and leaded glass doors, as shown.

2A-1—Yellow Pine Arch .....\$37.50  
 3A-1—Selected Oak Arch ..... 40.50

If you desire only one side of the bookcase it can be furnished at the following prices. Mention side you desire—right or left of illustrations shown here.

Yellow Pine .....\$20.00  
 Selected Oak ..... 21.00  
 Side and head jambs and side and head casings are charged for extra as follows: Yellow Pine, \$2.60; Selected Oak, \$3.65.



The simplicity of the design of the Colonnade coupled with the extremely low price makes it a very popular one. Made of Yellow Pine, Oregon Fir or Red Oak, by skilled workmen. The price quoted does not include jambs or trim.

2A-60—Yellow Pine or Fir, net.....\$12.85  
 2A-62—Oak, net ..... 14.50

For Jambs and Trim add, for Yellow Pine, \$2.60; Oak, \$3.65.



A plain column Colonnade. For smaller homes or ones where extreme simplicity is desired. We furnish these made of Yellow Pine, Oregon Fir or Red Oak. Shipped in the white, that is, unfinished, from Bay City or Chicago.

2A-64—Yellow Pine or Fir, net.....\$8.00  
 2A-66—Oak, net ..... 10.00

For Jambs and Trim add, Yellow Pine, \$2.60; Oak, \$3.65.



## Aladdin Closette

Modern ideas in relation to closets are changing and while the housewife has always spoken of the need of good closet room, a little reflection will disclose the surprising fact that most closets devote nearly three-quarters of the space to doors, elbow room and ability to walk into them, and one-quarter of the space to actual storage space.

Here is a practical plan than utilizes just 4½ square feet of floor space and yet gives more hanging space and storage space than the usual four by six foot closet that occupies 24 square feet of floor space!

By the use of coat hooks, costing about 5 cents a dozen at notion stores, it is easily possible to hang twelve suits or robes in this space, each one being easily found and removed. Can greater capacity be gained in the average good sized closet? Above the large compartment is space for hats, bedding or other things of like character, and below a wide, deep space for shoes and the many other articles that may require a place out of the way.

The cabinet is six feet high and, as in many instances, it can be inset into the bedroom wall, so that it utilizes the six inches of wall thickness and really takes up but one foot of bedroom floor space!



# ALADDIN Built-in Buffets

## Homecraft Built-in Buffet

A well proportioned "Homecraft" built-in side board or buffet has been very popular wherever offered. It is 4 ft. 6 in. wide and 7 ft. high, 14 in. deep. Has a bevel plate mirror back in opening over counter shelf, four drawers and one closet space in bottom section.

- No. 2A-24—Yellow Pine, glazed, clear double strength glass ..... \$26.50  
 No. 2A-25—Yellow Pine, glazed leaded Crystal glass..... 28.75  
 No. 2A-26—Selected Oak, glazed, clear double strength glass ..... 28.50  
 No. 2A-27—Selected Oak, glazed leaded Crystal glass..... 31.50

If side casing, base blocks and cap trim, as shown are wanted, add for Yellow Pine, 70c; Oak, \$1.45.



## Aladdin Homecraft Buffets

are designed with the object of giving the most convenience combined with the most artistic effects. They are made either of clear yellow pine or oak, and are sent out by us in the white, that is, unfinished. We furnish all hardware as shown. Finished glazed with leaded glass as shown or with plain double strength glass.

Size, 6 ft. 6 in. wide by 5 ft. 6 in. high; depth, 18 in. This cabinet has three large and four small drawers and two doors, three strong shelves in each side section. Best quality bevel plate glass mirror above shelf.

- No. 2A-20—Yellow Pine, Glazed, clear double strength glass ..... \$39.75  
 No. 2A-21—Yellow Pine, Glazed, leaded Crystal glass ..... 42.75

This case when finished to conform with the other woodwork in a home will harmonize with nearly any style of furniture. Price, F. O. B. shipping point; weight, 375 lbs.

- No. 2A-22—Selected Oak, Glazed, double strength glass ..... \$41.25  
 No. 2A-23—Selected Oak, Glazed, leaded Crystal glass ..... 44.75



## Homecraft Built-in Buffet

A "Homecraft" Buffet which is just what the name indicates. The result of a Craftsman's labor. It stands 7 ft. high and is 5 ft. wide; depth, top section, 14 in.; bottom section, 18 in. Has four large linen drawers in center of base section and two smaller drawers on the sides, suitable for silverware, etc. One large and two small bevel plate mirrors in each buffet. Weight, 300 lbs.

- No. 2A-30—Yellow Pine, glazed with clear double strength glass ..... \$37.25  
 No. 2A-31—Yellow Pine, glazed with leaded Crystal glass ..... 39.00  
 No. 2A-32—Selected Oak, glazed with clear double strength glass ..... 39.75  
 No. 2A-33—Selected Oak, glazed with leaded Crystal glass ..... 41.75

If side casing, base blocks and cap trim, as shown, are wanted, add for Yellow Pine, 70c; Oak, \$1.45.



# ALADDIN Built-in Mantle Book Cases

The space next the fireplace has long been devoted to use as a convenient nook for the book shelves. Aladdin designers have struck a happy combination in the cases illustrated here. It is planned to be adaptable to a twelve or fourteen foot room as priced by the widening or narrowing of the trim boards at sides. For anything between a fourteen foot and a sixteen foot room add \$5. Note that the top of book case continues across the top of fireplace, incorporating the mantel shelf.



## Prices of Book Cases including Mantel Shelf

- No. 2A-40—As shown in photographs. Double doors, three shelves and two drawers below, one on each side, plain glass ..... \$43.50  
 No. 2A-42—Same as above, but with leaded glass..... 49.50  
 No. 2A-44—As illustrated, but without drawers below, plain glass..... 34.25  
 No. 2A-46—Same as No. 2A-44, but with leaded glass..... 40.00

All of above prices in Yellow Pine or Fir. If desired in Oak, add \$5.00

## Aladdin Bathroom Cabinet and Medicine Chest



A splendid combination for installation in your bathroom. Gives generous drawer space for linens, towels, bedding and the many bathroom accessories. Comes in combination with medicine chest and mirror door. The cabinet is 4 feet from floor to top, 12 inches deep and 26 inches wide. A cupboard, two narrow drawers and four wide drawers complete the cabinet, while the medicine chest at the top has strong plain mirror door and shelves inside. The whole combination is strongly built, neatly finished and easily installed.

2B-50—Price, complete with all hardware, Yellow Pine, \$21.50

## Aladdin Medicine Chest



A very convenient addition to any bathroom. Made to be placed in a recess in the wall, the face to come flush with the plaster. The complete chest includes all hardware, trim, mirror door, etc. This door has a 14x20 inch best quality French plate mirror. Size of recess required in wall is 20 inches wide, 26 inches high, 4½ inches deep. Has three adjustable wood shelves.

2B-55—Medicine Chest, each ..... \$4.95

# Sovereign Summer Cottages



**T**HE many pleasures and advantages of summer cottage life need no argument here. Thousands and thousands of American families enjoy this stimulating life for several weeks or months each summer.

Sovereign Read-Cut Summer Cottages are distinguished from most summer cottages by the superiority of materials and construction and, while being wonderfully low in price, give every service demanded over a long period of years. Not the least of the pleasures derived by our customers many times is that of actually erecting the cottage themselves. Their vacation is planned with the arrival of the material and the joy of creating and building *their own* cottage lends a keen appreciation to its use in future years.

The frames of all summer cottages are of good, clean No. 1 dressed lumber; of proper size and design, not greatly dissimilar to dwelling houses. The siding is practically clear Yellow Pine or Oregon Fir, tongued and grooved. The rooms are all open to the rafters, the partitions being of clear Yellow Pine or Oregon Fir. Ceiling partition lumber finished both sides. The flooring is clear Yellow Pine or Oregon Fir.

## Specifications for Sovereign Summer Cottages

The following specifications apply generally to all summer cottages, but vary slightly in some cases, according to the size of the cottage; that is, in relation to size of sills, joists, and rafters.

Foundation sills, 4 x 6 in.  
Joists, 2 x 6 in.  
Studding, 2 x 4 in.  
Rafters, 2 x 4 in.  
Siding, 3/8-in. tongued and grooved, bevel face.  
Flooring, matched.  
Partitions, matched ceiling.

Roof, sheathing 3/8 in.  
Shingles or roofing.  
Doors, windows (glazed).  
Hardware, paint for two coats outside, any color, nails, locks, hinges.  
No plaster or plaster board furnished.

## The Asbury

See prices on inside of front cover.



Floor Plan  
The Asbury

**T**HE Asbury is a cosy little summer cottage of pleasing lines—built for two. The porch can be screened in to give an outdoor living room. The front door has glass in the upper portion, giving additional light to the living room. This is one of the old original summer cottages and, has been erected in hundreds of towns and cities throughout the country. At price quoted you get nails, paints, glass—everything to complete the Asbury. See general summer cottage specifications above and Terms on page 2.



At price quoted you get nails, paints, glass—everything to complete the Asbury. See general summer cottage specifications above and Terms on page 2.



## The Genesee

**W**HEREVER erected this cottage has had the most favorable comment. You will save at

least \$150 in purchasing this cottage, and at the same time have as strongly built house as is ever erected for summer cottage purposes. Bedrooms are one side of house and dining room and kitchen on other. A splendid type of cottage. See General Specifications, page 109 and Terms on page 2.

See prices on inside of front cover.



Floor Plan—The Genesee



## The Betcone

See prices on inside of front cover.

**T**HE plan of the Betcone is a five-room cottage with ample porch. The three bedrooms are plenty large enough for a double bed

in each. The living room is also used as a dining room. Kitchen, with rear door, is at rear. Here is one of our best sellers and always gives the greatest pleasure to owners. Easily and quickly put up. See general summer cottage specifications, page 109 and Terms on page 2.



Floor Plan—The Betcone



## The Statler

See prices on inside of front cover.

**Y**OU can erect the Statler yourself this vacation. And you can do it in a few days' time and save the cost of carpenter work. Just the right size for the family

of four or five. Plenty of ventilation throughout—bedrooms plenty large enough for double bed or two cots. The porch is large and airy, affording an opportunity for out-door sleeping. Enjoy a few days' time this vacation building your own summer home. See General Specifications on page 109 and Terms on page 2.



Floor Plan  
The Statler



## The Shoreview

See prices on inside of front cov

**T**HE Shoreview is a comfortable summer home of five rooms. A good 10x16 ft. living room is located at the front. Behind the living room are two bedrooms, dining room, and

kitchen, making a most complete floor plan with the porch across the front. See General Specifications on page 109 and Terms on page 2.



Floor Plan  
The Shoreview



## The Luna

See prices on inside of front cover. **A** BUNDANT space in this trim little summer cottage. Well screened porch of good size. Three sleeping rooms, living room and kitchen on inside. You will note that it can be set

on a very narrow lot. Gives splendid satisfaction. See General Specifications, page 109, for further information. See Terms on page 2.



Floor Plan—The Luna



## The Seaford

See prices on inside of front cover. **A** COSY summer home. Plenty of space on front porch—can be used for open-air dining room or sleeping room. Three bedrooms, dining room, living room and kitchen on inside. Is really one

of the neatest cottages imaginable. See general summer cottage specifications, page 109 and Terms on page 2.



Floor Plan  
The Seaford



## The Shasta

See prices on inside of front cover. **A** BIG summer cottage at a small price. Note the 36-ft. porch running all the way across the front of the building. Another



Floor Plan—The Shasta

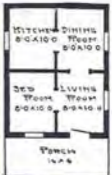
one of our pioneer designs. Always makes a good impression and saves a good deal of money. See General Specifications, page 109, and Terms on page 2.



## The Drayton

See prices on inside of front cover. **T**HE Drayton sells for a low price. When you consider that this price includes absolutely everything needed for the erection and completion of the entire building you will appreciate the surprising price. Two

bedrooms can be arranged by combining living room and dining room. See General Specifications on page 109 and Terms on page 2.



Floor Plan—The Drayton



## Aladdin Hunter's Lodge

See prices on inside of front cover. **T**HIS building is designed for settler's house or hunter's lodge. It is built just like other houses, strong and substantial. One door in front and four windows, two on each side. Height of side wall, 7 ft. 6 in. No plaster board or lath and plaster are furnished with this house at the price quoted.

Size, 12 x 16 ft. See Terms on Page 2.

# Popular ALADDIN Garages

**A**LADDIN Garages are staunchly built of the same splendid grades of material entering into the construction of our dwellings. Quick shipment, simply and easily erected, paints of colors to match your house included. A special feature is made of quick shipment. Standard material is always carried in stock so that your garage is loaded very quickly.

## The BUICK Garage

*See prices on inside of front cover.*

**A**LADDIN Garages have led the market for ten years. Staunch construction, high grade material and rock bottom prices have made an irresistible appeal upon automobile owners throughout the land. The Buick, illustrated on this page, is made in two standard sizes, the 8x14 ft. size being designed for Ford cars. It is just large enough to admit a Ford touring car with the top either up or down. Any garage of smaller dimensions will not admit the Ford car. This size sells complete with all material cut to fit, paints to match the colors of your house, hardware, locks, nails and roofing.

Size 10x16 ft. is of the same construction. This will admit a car of 110 inch wheel base.

All garages shown are furnished without floors, as practically all auto owners prefer to build floor of concrete.





## The Peerless

See prices on inside of front cover.  
Size, 20x20 ft. (two cars). One door.

See Terms on Page 2.

**D**ISTINCTIVE and attractive. The Peerless will do credit to any surroundings. It is furnished with siding half-way up and shingles on upper part of wall. Very wide eaves with supporting brackets set off building excellently. Large door with glass, together with windows on two sides, give plenty of light.



## The Maxwell

See prices on inside of front cover.

Size, 10x16 ft. See Terms on Page 2.

**A**SHINGLE-COVERED Garage that nicely matches any house. Roof extends in front to afford protection during inclement weather. Eaves have exposed rafters. Good, wide double doorway. Compact, but convenient in every respect. Plenty of light.

## The Winton

See prices on inside of front cover.

Size, 12x20 ft. See Terms on Page 2.

**T**HE Winton will take the largest car on the market, with ample room at sides for working about car and for supplies. It has swinging glass doors and one window on each side. It is of a splendid type and always looks good wherever it may be erected. Painted to match your house.



## The Packard

See prices on inside of front cover.

Size, 20x20 ft. (two cars). Two doors.

Size, 30x20 ft. (three cars). Three doors. With double sliding doors.

See Terms on Page 2.

**T**HE broken roof lines of the Packard give it an individuality immediately apparent. The building is furnished with five windows, two large glass doors and small door.

# ALADDIN Readi-cut Barns

**T**HE word Aladdin means as much to barns as it does to homes. Aladdin barns are built for strength and durability. The quality of the material is far superior to that found in the average barn.

Each Aladdin Barn is very strongly constructed, in fact, stronger than it is usual to build barns of the same size erected by usual methods. The timber

in every barn is heavier and stronger than it is really necessary to use in a building of the same size. We appreciate the great weight and strains that are put in farm barns at times, and each barn is constructed so as to stand a greater weight than it will ever be called upon to hold.

They are not only constructed of very heavy timber, but are braced and counter-braced wherever this bracing will increase the strength of the building.

Each barn has material cut to fit ready to nail in place the same as all our other regular dwellings and houses. In fact, they are better finished than it is usual to build ordinary barns throughout the country. All of the material is dressed so that the inside of each building presents a finished appearance and is not merely of rough, unfinished lumber.

We furnish all the different kinds and sizes of nails required in the erection of the building; heavy barn door tracks and rollers for the large doors to slide upon; hinges and locks for the smaller doors. The windows have the glass already in them.

We will furnish any colors of paint that you may desire for the outside of the buildings, two coats; shingles or roofing, whichever you prefer, for the roof of the building.

We have quoted the prices on the barns so that you can purchase either the barn itself, or so that you can leave out the first and second floors and the stalls, or so that you can purchase the building with the first floor added, or with the second floor added, or with both floors added. We have also quoted the price separate on the stalls, so that you can add any number of stalls you desire with the building. For example, a gambrel roof barn, size 20x40 ft., without first or second floors or mangers would cost \$245.00. First floor furnished with the barn would cost \$106.27 extra, or \$631.27 for barn and first floor complete. For a gambrel barn, size 20x40 ft., with first and adding second floors and mangers, for two stalls the cost would be \$703.51 complete.

Each barn as we furnish it, and as listed in the cost on the barns, will include a second floor at one end above the stalls. This second floor will be twelve feet long and the width of the end of the barn, and is always included in the first cost of the barn.

Many people prefer to purchase the barn without the first floor, which is really unnecessary in many cases, where hay and grain are intended to be stored into mows. Others prefer to put in either a part or the entire first floor in cement, so that we have quoted the price of the barn exclusive of both floors and stalls, and have listed separate the cost of each. This will enable you to purchase the barn itself and add either the first or second floor or any number of stalls desired.

The Aladdin Special Barn was built to meet the great demand for a barn large enough to shelter two or three horses with wagons, etc. Plenty of room on the first floor for three stalls, with a large mow on second floor for hay, straw and grain. At the price quoted, the second floor is included, but the first floor is omitted, as many owners prefer a cement or concrete first floor on account of the convenience in cleaning stalls, etc.

**SPECIFICATIONS:** Size, 16x24 ft. Price, \$375.00. Cash discount, 5%. Net price, \$356.25. See Terms on page 2.

Sills, 6x6 in. Studling, 2x4 in. Rafters, 2x4 in. Second floor joists, 2x8 in. Siding, 7/8 in., matched; roof sheathing, 1 in., dressed. Flooring, second floor, 1-in. lumber. Shingles or roofing for roof. Large door, 8 ft. 4 in. x 9 ft. 6 in. Stall door, 3 ft. 6 in. x 7 ft. 2 in. Windows, sliding sash, glass in place. Paints, any colors, two coats, outside. All hardware, nails, horseshoe tracks, hinges. At the price quoted above, second floor is included. Add \$39.42 to the above price for first floor of 2-in. planks, including first floor joists of 2x8 in.

## ALADDIN SPECIAL Barn



See prices on inside of front cover.



# The Gable Barn



**T**HE Gambrel and Gable Roof Barns are here shown. The construction and material of both barns are exactly the same, the only difference being in size and design. These barns have given the greatest satisfaction and service on the western plains of Nebraska and Kansas, where they are subjected to the heaviest strains of wind and storms. This goes to prove the great strength and stability of the construction.

## Gambrel and Gable Barn Specifications

Sills, 6 x 8 in.  
 Studding for the side walls and gables of barn, 2 x 6 in.  
 Rafters, 2 x 6 in.  
 Collar Beams, 2 x 6 in.  
 Cross braces in outside walls, 2 x 6 in.  
 Anchor brace, 2 x 6 in.  
 Plates of top walls, doubled, 2 x 6 in.  
 First floor joist, 2 x 12 in.  
 First floor flooring, 2-in. plank.  
 Second floor joists, 2 x 8 in.  
 Second floor flooring, inch lumber.  
 Stall studding, 2 x 4's.  
 Stall siding, inch lumber, dressed.  
 Mangers attached to stalls, inch lumber, dressed.  
 Feed boxes, inch lumber, dressed.  
 Roof sheathing, inch lumber, dressed.  
 Roofing or Cedar shingles for roof.  
 Siding, perpendicular barn boards or horizontal matched siding, whichever you prefer.  
 Windows, 18 x 24, glazed, glass measurement.  
 Doors, double and single.  
 Barn door tracks and rollers for sliding doors.  
 Hinges and locks for swinging doors.  
 All nails of various sizes for entire building.  
 Two coats of paint, any color desired for outside.  
 Complete instructions and illustrations for the erection.  
 Total height of side walls, 12 ft. gambrel, 15 ft. gable.

Below we have listed the prices for both designs, gambrel and gable roofs, with specifications that include either the gambrel or the gable design. The gambrel barn is illustrated at the bottom of the page.

## Gambrel and Gable Barns

Height of Side Walls of Gambrel Barn is 12 feet 0 inches, and of Gable Barn is 15 feet 0 inches. Prices Given are for Either Style. Gable Roof Barn Illustrated on Following Page.

| Size             | Price<br>Net Cash | Stall with  |              |        |
|------------------|-------------------|-------------|--------------|--------|
|                  |                   | First Floor | Second Floor | Manger |
| 16 x 24 ft.....  | \$324.00          | Extra       | Extra        | Extra  |
| 20 x 30 ft.....  | 439.00            | \$51.00     | \$15.45      | \$7.00 |
| 20 x 30 ft.....  | 439.00            | 79.72       | 30.25        | 7.00   |
| 20 x 40 ft.....  | 545.00            | 106.27      | 47.24        | 7.00   |
| 20 x 50 ft.....  | 649.00            | 132.86      | 61.30        | 7.00   |
| 20 x 60 ft.....  | 755.00            | 159.44      | 80.98        | 7.00   |
| 20 x 70 ft.....  | 861.00            | 186.00      | 97.80        | 7.00   |
| 20 x 80 ft.....  | 967.00            | 212.58      | 114.74       | 7.00   |
| 20 x 90 ft.....  | 1,075.00          | 239.06      | 131.92       | 7.00   |
| 20 x 100 ft..... | 1,380.00          | 265.65      | 148.49       | 7.00   |
| 24 x 30 ft.....  | 400.00            | 65.06       | 26.42        | 7.00   |
| 24 x 40 ft.....  | 615.00            | 127.53      | 56.00        | 7.00   |
| 24 x 50 ft.....  | 735.00            | 159.44      | 76.91        | 7.00   |
| 24 x 60 ft.....  | 854.00            | 191.41      | 97.14        | 7.00   |
| 30 x 40 ft.....  | 726.00            | 159.44      | 79.84        | 7.00   |
| 30 x 50 ft.....  | 861.00            | 190.39      | 104.58       | 7.00   |
| 30 x 60 ft.....  | 997.00            | 223.17      | 138.29       | 7.00   |
| 30 x 70 ft.....  | 1,139.00          | 279.09      | 172.04       | 7.00   |
| 30 x 80 ft.....  | 1,298.00          | 318.87      | 205.78       | 7.00   |
| 30 x 90 ft.....  | 1,462.00          | 358.73      | 224.12       | 7.00   |
| 30 x 100 ft..... | 1,588.00          | 398.39      | 257.86       | 7.00   |



# Aladdin Buffet



The Aladdin Craftsman Buffet is an original Aladdin design that has proven very popular with our home builders. In design it is possibly the most pleasing and serviceable of any offered to the home builder. Roomy and well arranged, it has four sets of shelves with a divided light glass door for each section. The lower section consists of five drawers for linen and silver. The two drawers at the bottom will please the housewife. Being especially large they provide an excellent space for tablecloths and other large pieces. The illustration here shows the Aladdin Buffet finish in Mahogany and trimmed in White Enamel. It takes an enamel finish as readily as it does the stain finish. Aladdin Buffet, size 4 ft. 6 in. by 7 ft. high by 1 ft. 6 in. deep, net ----- \$41.25

## Homecraft Kitchen Cabinets

**T**HIS Aladdin "Homecraft" kitchen cabinet is 7 ft. high and 5 ft. wide, has three drawers, a four bin and a closet in bottom section and two large glazed doors covering three shelves in top section. Top section is 12 in. deep, bottom section 16 in. deep. Complete with hardware, as shown. Sent in the white to be finished to conform with the other woodwork in the room.

No. 2-35—Yellow Pine. Weight, 325 lbs. \$35.00  
 No. 2-36—Selected Oak. Weight, 350 lbs. 57.00

**L**ARGE built-in kitchen Cabinet, width over all 6 feet, height 7 feet; depth of top section 12 in., of bottom section 16 inches. The shelf space has two shelves as shown running full width of Cabinet. Bottom section is equipped with 5 drawers, one cupboard and one large four bin.

This Cabinet is built for corner of a room with one end against the side wall.

No. 2-132—Yellow Pine ..... \$41.00  
 No. 2-134—Oak ..... 42.00



# EXACT WORDS OF OWNERS

The complete address of any Aladdin owner listed here will be sent to anyone upon request.

## Massachusetts.

I have found everything in all my dealings with you just as represented and I also know for a fact that on the lumber bill alone I saved easily \$500.00. All the lumber was there and had plenty of everything. I shall take great pleasure in showing my bungalow, the "Burbank" to others and feel ready to recommend you to all.

GEO. S. HARDY.

## Ohio.

I am very thankful to say I am well pleased with my house in every respect. We are now comfortably fixed up with all modern conveniences and you can think of us as a happy little family in a beautiful, little Aladdin bungalow. So many others could be proud owners of Aladdin homes if they only knew what a good, honest firm you are to deal with. You surely have been loyal to me in every respect and if I ever build again I will prove to you I appreciate your interest and kindness.

J. L. SANDERS.

## Indiana.

We are glad to recommend you to others, as we are so well satisfied with our house and all our dealings with you. We have had so many to admire our little cottage the "Chester" and are very proud of it. All the material was "No. 1," every piece fitted well and saved carpenters bills.

ORUS J. WHITE.

## Ohio.

We surely are pleased with our Maples Bungalow and cannot say enough to praise it. Everything fit fine and am pleased to say I saved between \$600.00 and \$700.00 in building by the readi-cut method.

PED WENT.

## Ohio.

The material in my Winthrop was just as represented and I am well pleased with it in every way. I have considered neither time nor workmanship on it and it has gone together perfectly. The painter told me that he found the joints more perfect in this house than any he has ever worked on and he has painted some of the highest priced ones in this city. I assure you that anyone who wishes to see it will be allowed that privilege. I estimate that I saved more than \$300.00 on my home. Yours truly, H. W. SIEFER.

## Oklahoma.

I am more than pleased with my "Plymouth" bungalow. The carpenters didn't use a saw in putting up the frame and everything went together perfectly. It is an ideal little home—not only a house. Everyone who has seen it praises the beautiful finishing lumber.

We only had the pleasure of living in our Aladdin three months when I was called to this city where I am teaching. I hope in the next few years I can build another Aladdin. There's a pleasure or pride which accompanies the Aladdin home that we cannot get away from. I figure I saved \$600.00 by building by this method.

THOS. R. STEMEN.

## Pennsylvania.

I think the Aladdin Read-i-cut system is the only way to build a house, because you save a lot on both labor and lumber. I saved at least \$500.00 on my house. People came to see it from a distance of 60 miles and all liked it very much. I am always glad to show it to anyone as I am proud of it.

CLAYTON W. FARBER.

## Maryland.

My Edison is completed and to say that I am pleased is putting it very mild indeed. My house is built upon a knoll and raised three feet above ground. The picture in the catalog entirely fails to do it justice. During its construction it was visited and watched by scores of people and was fairly commented upon by our local newspaper on two occasions as to its appearance and the material entering into its construction. "Edison" is the passport and all is well.

PATRICK REEDY.

## Pennsylvania.

We believe our "Maraden" is second to none; are more than satisfied both with the house and your Golden Rule business methods. We wish you increasing prosperity. If we were to build again, we would surely have another Aladdin.

J. A. Mc HUGH.

## Pennsylvania.

My experience in building my Rochester has been very beneficial to me, not only from a financial viewpoint, but from a practical side, as I have followed the mode of construction from foundation up, and tried to find the weak points with the result that I can truly say that neither my carpenters or myself can say today that there are any. The entire transaction was completed in a pleasant businesslike way and I feel assured we are mutually benefited by same. Your method of dealing with a customer makes it impossible to be anything else than genuine boosters for Aladdin.

T. J. McDERMOTT.

## New York.

Would say I am more than pleased with my Kentucky bungalow which is built on Laurel Ave. It comes up to all the requirements of my needs. A number of my friends wonder how a bungalow like it can be cut at the factory and then constructed; or as you say, Read-i-cut. But I can understand it as I am a carpenter. Am enclosing two views of my bungalow.

EDWARD C. SAYRE.

## Indiana.

I have just finished building one of your Read-i-cut houses, the Stanhope, and want to express my gratitude to you for making it possible for a poor man to have a home. Having made a personal investigation and inspection of the Read-i-cut houses of the largest mail orders in the world, I am satisfied that the Aladdin Read-i-cut material is far superior to theirs and the prices the most reasonable.

REV. C. C. CRIFE.

ORDER TO  
**THE ALADDIN COMPANY**  
 BAY CITY, MICHIGAN



Your money will be instantly returned if what you purchase from us is not found to be entirely satisfactory in every particular and exactly as represented. Safe arrival of all material is guaranteed.

*W. J. Sovereign* President  
 THE ALADDIN CO.



The following order is placed under the absolute guarantee of complete satisfaction to purchaser, which is printed above.

INSTRUCTIONS FOR SHIPPING MY HOUSE

Date \_\_\_\_\_

Ship to \_\_\_\_\_

Street \_\_\_\_\_ Town \_\_\_\_\_

County \_\_\_\_\_ State \_\_\_\_\_

Via \_\_\_\_\_ R. R. Is there a Freight Agent there? \_\_\_\_\_

ORDERED BY \_\_\_\_\_

Street \_\_\_\_\_ Town \_\_\_\_\_

County \_\_\_\_\_ State \_\_\_\_\_

Enclosed please find \$ \_\_\_\_\_ for which ship me at once

Style of House \_\_\_\_\_ Shown on Catalog Page \_\_\_\_\_

SIDING OR SHINGLES For Outside Walls \_\_\_\_\_

LATH AND PLASTER OR PLASTER BOARD For Inside Walls \_\_\_\_\_

SHINGLES OR ROOFING For Roof \_\_\_\_\_

What Kind of a Foundation will you Use? \_\_\_\_\_

Color Paint or Stain for Side Walls \_\_\_\_\_ Trim \_\_\_\_\_

Color Porch Floor \_\_\_\_\_

Inside Finish \_\_\_\_\_

# Bay City, Michigan Aladdin Town



Every house shown in the Aladdin catalog is erected in Bay City with two or three exceptions. This includes all of the largest, The Villa, The Brentwood, The Colonial and The Lamberton.

You will find whole streets of Aladdin Houses, whole subdivisions on which only Aladdin Houses are erected.

Bay City is truly called Aladdin Town, and Bay City people seem very proud of it.

A most interesting trip could be arranged visiting the Aladdin Mills and inspecting the Aladdin Homes in Bay City.

Anyone planning on coming to Bay City or vicinity is earnestly invited to call on us while here.

THE ALADDIN COMPANY.



W. L. CLEMENTS, President

A. S. BROWN, Vice President

H. S. BROWN, Vice President

J. P. BROWN, Vice President

W. H. BROWN, Cashier

W. H. BROWN, Cashier

ORGANIZED 1864

1919

## THE FIRST NATIONAL BANK

CAPITAL \$200,000.00

SURPLUS \$200,000.00

May 1, 1919

To Aladdin Customers:

We are pleased to testify to our confidence in the Aladdin Company, and to assure you that any confidence you extend them will be honorably treated.

The men behind this organization, who are perfectly responsible financially and otherwise, are all personally known to us, as is their integrity and upright business policy.

This company originated, perfected and established the Rendi-Cut system of Construction, and is the pioneer as well as the largest manufacturer of houses that we know of.

You may have full confidence that the representations of this company will be fully lived up to.

Very truly yours,

W. L. Clements  
President.



## INDEX

|                                   |             |                           |             |
|-----------------------------------|-------------|---------------------------|-------------|
| Additions .....                   | 104-105     | Leota .....               | 54          |
| Aladdin Cities.....               | 14          | Lock Sets.....            | 101         |
| Built-in Fixtures 106-107-108-116 |             | Merchandise .....         | 84-85       |
| Barns .....                       | 114-115     | Michigan .....            | 34-35       |
| Brentwood .....                   | 29          | Maples .....              | 37          |
| Boulevard .....                   | 30          | Merrill .....             | 53          |
| Burbank .....                     | 43-44       | Marsden .....             | 79-80       |
| Carolina .....                    | 45          | New Eden.....             | 21          |
| Charleston .....                  | 46-47       | Pasadena .....            | 19-20       |
| Colonial .....                    | 72-73       | Plaza .....               | 31          |
| Chester .....                     | 94          | Pomona .....              | 32-33       |
| Cadillac .....                    | 96          | Princeton .....           | 64          |
| Doors .....                       | 101         | Plymouth .....            | 93          |
| Dept. of Service.....             | 66-67-84-85 | Raymond .....             | 28          |
| Duplex Houses.....                | 82-83       | Rodney .....              | 52          |
| Duplex .....                      | 82          | Rochester .....           | 86-87       |
| Devon .....                       | 83          | Roseland .....            | 89-90       |
| Detroit .....                     | 91-92       | Sheridan .....            | 100         |
| Dresden .....                     | 95          | Summer Cottages.....      | 100-110-111 |
| Everette .....                    | 15          | Stanhope .....            | 40-41-42    |
| Eleanor .....                     | 36          | Sheffield .....           | 48-49       |
| Erie .....                        | 61          | Selwyn .....              | 61          |
| Edison .....                      | 97          | Sunshine .....            | 71          |
| Franklin .....                    | 25          | Strathmore .....          | 74-75       |
| Florence .....                    | 69          | Shadow Lawn.....          | 98-99       |
| Finley .....                      | 81          | Standard .....            | 22-23       |
| Garages .....                     | 112-113     | Theima .....              | 55          |
| Georgia .....                     | 56-57       | Tucson .....              | 76          |
| Gretna .....                      | 65          | Two-Apartment Houses..... | 82-83       |
| Herford .....                     | 58-59       | Virginia .....            | 102-103     |
| Hudson .....                      | 62-63       | Venus .....               | 17-18       |
| Introductory Pages.....           | 2-14        | Villa .....               | 26-37       |
| Industrial Housing.....           | 14          | Warren .....              | 16          |
| Interiors .....                   | 60-68-88    | Willard .....             | 24          |
| Kentucky .....                    | 38-39       | Winthrop .....            | 77-78       |
| Lamberton .....                   | 50-51       | Yale .....                | 70          |

## INDEX OF SUBJECTS

|  |             |                            |             |
|--|-------------|----------------------------|-------------|
| Additions .....                          | 104-105     | Freight .....              | 8           |
| Aladdin Cities.....                      | 14          | Furnaces .....             | 84-85       |
| Aladdin Selling Principle..              | 3           | Furniture .....            | 84-85       |
| Aladdin System of Construction .....     | 3           | Garages .....              | 112-113     |
| Arches .....                             | 106         | Industrial Housing.....    | 14          |
| Barns .....                              | 114-115     | Interiors .....            | 60-68-88    |
| Bathroom Fixtures.....                   | 84-85       | Interior Finish.....       | 9           |
| Built-in Fixtures.....                   | 106-107-108 | Lath and Plaster.....      | 9           |
| Chimneys (see Masonry).....              | 9           | Lumber .....               | 7-8         |
| Comparison with Steel Construction ..... | 6           | Masonry .....              | 9           |
| Dept. of Service.....                    | 66-67-84-85 | Materials Used.....        | 2           |
| Doors .....                              | 101         | Merchandise .....          | 84-85       |
| Electric Light Fixtures.....             | 84-85       | Reversing Floor Plans..... | 2           |
| Foundation Plans (see Masonry) .....     | 9           | Summer Cottages.....       | 100-110-111 |
|  |             | Terms .....                | 2           |
|  |             | Waste .....                | 4-5-8       |

# THE ALADDIN COMPANY

BAY CITY, MICH.

OFFICE OF  
O. E. Sovereign  
Secretary-Treasurer  
General Manager

Dear Friend:

There are many interesting things to tell you about each one of the houses illustrated in this book.

But first, you must write us which house you are interested in. Before doing this, please refer to the Index of Subjects on the back cover, as you will find reference to many interesting facts about the different houses and our system of construction.

We have spent fourteen years of study and work to make the homes shown here as nearly ideal as possible.

Aladdin houses are built in thousands of cities and towns thruout the country. Wherever you live there are sure to be enthusiastic Aladdin home owners that we will be very glad to put you in touch with.

We anticipate the pleasure of working with you to the end that your home will be completed in a way that is pleasurable and satisfactory.

Inviting an early letter, we are  
Cordially yours,

*O. E. Sovereign*

Sec'y, Treas. & Gen'l Mgr.

# Aladdin Homes



Aladdin Office  
Bay City, Mich.

Manufactured by  
*The Aladdin Co.*  
Bay City, Mich.





## Evidence of Aladdin's Leadership

Aladdin has been honored the past two or three years in different ways, but is most proud of the medals awarded by two great expositions. The Panama-Pacific International Exposition, that most wonderful of all great World's Fairs, and the Michigan Agricultural Exposition granted "Les Grandes Prix," issuing diplomas as shown in photographs. The Panama-Pacific medal was issued upon the Model Cottage which Aladdin produced and erected for Uncle Sam, while the Michigan Exposition Medal was the result of our building a Kentucky bungalow at the fair for the Northeastern Michigan Development Bureau. Official record is made in the Diploma that The Aladdin Company originated, perfected and established the Read-Cut System of Construction. These facts are quoted here merely as additional evidence of Aladdin's leadership in all things pertaining to Scientific Home Building. But the greatest test of leadership is the universal record of satisfaction to our customers.

### State of Michigan

Whereas it is the practice of the Michigan Agricultural Society to recognize and award to exhibitors of improvements both living Agricultural and Horticultural Stock and

Whereas the construction of one and several of the buildings in Detroit along the line of such improvements; and

Whereas the Aladdin House constructed by the Aladdin Company for the Northeastern Michigan Development Bureau, which house has been erected upon the grounds of the Michigan Agricultural Society, is a strong demonstration of expert and superior building by scientific practical, economical and successful construction of material in the construction of such a high standard and class and

Whereas the Aladdin Company organized, perfected and established the Read-Cut System of Construction, therefore be it

Resolved, That the Michigan Agricultural Society does hereby award to the Aladdin Company a certificate of merit consisting of a Gold Medal, serially numbered, and the same is hereby authorized.

*J. C. Aladdin*



ALADDIN  
HOMES

