

Aladdin Homes

We Pay the Freight

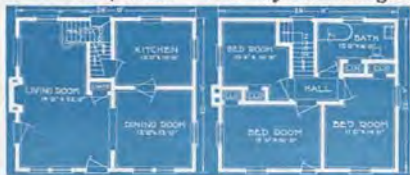
"Sold By The Golden Rule"

35



The Pilgrim—A Perfect Home—Price \$1298—We Pay the Freight

The Pilgrim is an interesting adaptation of Dutch architecture to the American Colonial type. This style has come to be the most popular for modest two story homes throughout the country. Perfect harmony is manifest in the Pilgrim. While the impression is story and a half, all ceilings first and second floor are square with full height side walls. Study the interior. A 14x22 foot living room, 12x12 ft. dining room, 12x10 kitchen, a coat closet and grade cellar entrance complete the first floor. The second floor has three bed rooms, hall, three closets, linen closet and bath. For specifications single construction, see page 16, being same as Adams. Price single construction \$1298. Double Construction Price \$1521. See double construction specifications on Page 16. Pergola porch shown in picture \$76., extra. We pay the freight.



ALADDIN Houses
Are Not Portable



The Aladdin Company offers you an opportunity to buy a complete house direct from the manufacturer saving four profits on the lumber, mill-work, hardware and labor.

Tens of Thousands of American families are living in Aladdin houses. The Aladdin System of Construction, the original Read-Cut System, was created eighteen years ago. For eighteen years this organization has devoted its energies, its brains and its experience to making home building simpler, easier and less expensive. The Savings Aladdin offers you, the Service Aladdin offers you and the safety Aladdin offers you are completely explained on pages 10 and 11 of this book.

The Columbia—A Real Gem—9 Plans—Price \$548

WE PAY THE FREIGHT



THE modest cottage is the foundation of the American Republic. The American citizen is master of himself and his destinies when he steps across the threshold of his own home. He pities the flat dweller and the renter with their multiple restrictions, confinement and tribute-paying exactions. "He owns his own home," is a recommendation for thrift, character and integrity that all the world recognizes.

Wise, therefore, is the man who arrives at this momentous decision. However modest his own home must be, "it will be mine for the happiness of my family and myself."

The Columbia breaks through the clouds of obstructions, high prices, middlemen's profits, architects and contractors' fees and opens up the big opportunity to "Start right now;" to start with less than you thought possible, to start with a most modest savings.

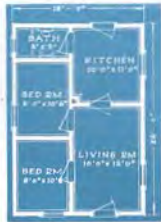
The Columbia is the foundation of the Aladdin business. That is because of the thousands of men and women who recognize it as the foundation of their home-owning ambitions. It is a place to start. Later successes may come enabling a larger and more ambitious house. But the Columbia is the starting point; it conserves expenses, inspires thrift—AND SAVES MONEY. Nine floor plans are presented. They are all priced alike—\$548—and we pay the freight. The quality of material in the Columbia is all of the same high quality as that furnished for our larger houses. Choose that which meets your needs best—and LET'S GO!



Columbia No. 8
Included in the Columbia No. 8 are 3 porch, large living room, breakfast dining room and kitchen, two bedrooms, and bath. Single room for a family of four. The porch shown above applies to Columbia No. 8.



Columbia No. 4
No. 4 is a very popular arrangement of big living room, kitchen, bath and two bedrooms. All rooms are the same size as available in these dimensions.



Columbia No. 5
The rooms in No. 5 are presented differently although of the same accommodations as shown in plan No. 4. It has found a very close fit in the hearts of the 450,000 built it.



Columbia No. 6
Columbia No. 6 gives big living room, and dining room, with two bedrooms and kitchen. This type is desirable for those who are unable to obtain water or sewerage for modern conveniences.

The Savings After Building a Small Home Will Add More to Your Happiness Than the Luxuries of a Big Home. The COLUMBIAS are Priced at \$548—and We Pay the Freight



Porch for Columbias

The porch shown in the accompanying picture will be furnished for \$90.00. It is size 14x8 ft. and price includes all materials complete.

Specifications

As in the larger plans, you may have sheathing and lath in place of siding without extra cost if you would like to stucco the outside. Shingles for the side walls like picture of Cedars, page 4, instead of siding can be had, (see page 16). The Columbia is priced at \$548, in single construction and \$658, in double construction—and we pay the freight. For double construction specifications see page 16.

Columbia—Size 18x26. (Single construction), 4x6 sills, 2x6 joists on 24 inch centers. No. 1 tongue and grooved flooring, 2x4 inch wall and partition studing on 16 inch centers. Lath for lining all walls and ceilings. No. 1 drop siding for outside walls. No. 1 outside finish, 2x4 inch ceiling joists on 16 inch centers, 2x4 inch rafters on 24 inch centers. Roof sheathing laid tight, best quality green slate surfaced roofing. Check rail windows, size of glass in each sash 26x24 in., sash glazed ready to hang. Bathroom supplied with swinging egressment, size of glass 18x24 inches. Clear interior trim. Clear 6 inch two member baseboard. Doors size 2 feet 8 inches by 6 feet 8 inches, highest quality fir. Front and rear doors upper half glazed, 6 feet by 7 feet egress arches furnished where shown in plans. Two coats of paint for exterior. Stain and varnish for interior trim and doors. All nails, mortised locksets, hinges, double acting door hinges, casement locks and hinges, and spring window bolts to complete house. Height of ceilings 8 feet. Roof 1/2 pitch. Exposed eaves 1 foot projection.



Columbia No. 2

No. 2 is another variation of this remarkable design wherein two bedrooms are included with the big living room, kitchen and bath. It is a big seller and never fails to delight its owners.



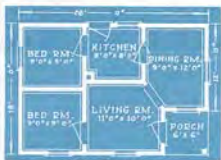
Columbia No. 1

Here is a very popular plan for a small family. It is arranged with large living room, dining room, kitchen and bath. All rooms have ample wall space.



Columbia No. 9

This plan of Columbia includes an inside cellar entrance—a complete little home having living room, dining room, bed room, kitchen and bath room.



Columbia No. 7

No. 7 illustrates another variation of the best porch on the Columbia. It also includes living room, dining room, kitchen and two bedrooms. It is a cozy little nest for a family of four.



Columbia No. 10

Columbia No. 10 is designed with inside cellar entrance and includes a two bed room plan. It can be faced either way on your lot by transposing door and window in living room.



Be it ever so humble—"it's our own"



The Cedars

THE Cedars is a beautiful bungalow, marvelously priced and remarkably designed. Five fine plans are shown below, while the photograph above illustrates the charm and home-appeal of the exterior. It is priced with siding in single construction at \$695 but sheathing and shingles will be furnished at the regular price of double construction (see page 16). The price in double construction is \$829. Porch shown in picture may be had by adding \$120 to the price. From the five floor plan arrangements you are sure to find one that exactly meets your ideas of a comfortable, convenient, sturdy home. Specification for the Cedars in single construction are shown on page 5—at bottom.

The Cedars—Plan 5

This floor plan arrangement is a highly popular one. Think of such a complete home—containing living room, dining room, kitchen, two bed rooms, bath and inside cellar entrance for the astonishingly small price of \$695. Plan No. 5 shown at the right. Remember that the price of the Cedars is freight paid to your station.



The Cedars—Plan 1

Plan 1 of the Cedars design offers a type with dining room, arched opening to living room, two bedrooms, kitchen, bath and pantry. It is a semi-cottage-style type and serves well to make a happy little home. Note the double windows in living room and dining room.



The Cedars—Plan 2

The Cedars, Plan 2, presents a type with inset front porch together with a long arrangement of rooms. Note especially the closets all such bedrooms with an extra closet from living room. Two fine bedrooms with bath between and big living room and kitchen offer every comfort.



The Cedars—Plan 3

Here is a plan for a family of six. Three bedrooms, living room, kitchen, dining alcove and bath; a snug, convenient little home as you will see. Porch size 10x12 feet will be furnished like shown in picture, for \$120.00 additional.



The Cedars—Plan 4

The Cedars, Plan 4, is produced as the result of a demand for three bedrooms, with big living room, and big kitchen. It also has double windows in the two living rooms. As mentioned above the porch shown in picture on front cover may be had by adding \$120.00 to the above price.



The Potomac—a Quaint Colonial Bungalow—Price \$997 AND WE PAY THE FREIGHT



The Potomac—Plan Q

The Potomac Style Q offers a room arrangement that gives most unusual satisfaction to all owners. Brilliant light, good air are assured from the carefully studied placing of windows. This will make a perfectly appointed home.



SERVICEABILITY, comfort, beauty—these three—if properly co-ordinated give happiness and gratification to the home owner. The Potomac is a master example of them all. Colonial atmosphere is ever appealing to the home owner for it bespeaks hospitality, generosity, old-fashioned simplicity and true goodness.

From its clean straight timber to its beautifully machined siding, and handsomely grained woodwork, it represents the very best in everything desirable in a real home. Details of the sound construction are given below. Should you prefer a shingled exterior, see page 16. Three attractive floor plan arrangements for the Potomac are shown here.

You may see shanting and lath for a stucco exterior without adding anything to the above price. Pergola type porch comes extra at \$76—size 8x14 feet. The price of the Potomac in single construction is \$997. The price in double construction is \$1166, as described on page 16.

Specifications for Potomac—See 24'x36'. (Single construction). 6x6 inch sills, 2x8 inch joists on 24 inch centers. No. 1 tongued and grooved flooring. 2x4 inch wall and partition studs on 16 inch centers. Lath for lining all walls and ceilings. No. 1 drop siding for outside walls. No. 1 outside finish. 2x4 inch ceiling joists on 16 inch centers. 2x6 inch rafters on 24 inch centers. Roof sheathing half inch. Best quality green slate surfaced roofing. Clank rail windows, size of glass in each sash 20x24 inches, sash glass ready to hang. Kitchen and bath room supplied with check rail window, size of glass in each sash 20x18 inches. Clear interior trim. Clear 6 inch two member baseboard of attractive design. Doors size 2 ft. 8 inches by 6 ft. 8 inches, highest quality fir. Front and rear doors glazed upper half. Cedar stairs furnished where shown in plans. Two coats of paint for exterior. Stain and varnish for interior trim and doors. All nails, mortised locksets, hinges, double acting floor hinges and spring window bolts to complete house. Height of ceiling 9 feet. Roof 1/2 pitch. Exposed eaves 1 foot projection.

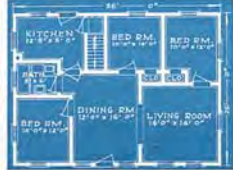
Specifications for Cedars



CEDARS—Size 22x26. (Single construction). 6x6 inch sills. 2x8 inch joists on 24 inch centers. No. 1 tongued and grooved flooring. 2x4 inch wall and partition studs on 16 inch centers. Lath for lining all walls and ceilings. No. 1 drop siding for outside walls. No. 1 outside finish. 2x4 inch ceiling joists on 16 inch centers. 2x4 rafters on 24 inch centers. Roof sheathing half inch. Best quality green slate-surfaced roofing. Clank rail windows, size of glass in each sash 20x24 inches. Bath room has swinging easement, size of glass 18x24 inches. Clear interior trim. Clear 6 inch two member baseboard. Doors size 2 feet 8 inches by 6 feet 8 inches, highest quality fir. Front and rear doors upper half glazed. 7 foot raised arch furnished where shown in plans. Two coats of paint for exterior. Stain and varnish for interior trim and doors. All nails, mortised locksets, hinges, double acting floor hinges and spring window bolts to complete house. Height of ceiling 8 feet. Roof 1/2 pitch. Exposed eaves 1 foot projection.

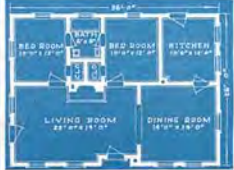
The Potomac—Plan L

This plan gives full accommodations for a family of six, having three bedrooms. A fine living room, extra large dining room, bath, kitchen and inside rear entrance complete this desirable arrangement.



The Potomac—Plan M

In Plan M we find an arrangement that has had a long period of popularity with our customers. A big living room, size 22x14 feet with fine light and convenient access to other rooms, is a delight to the family. The dining room is 14x14 feet. Other rooms are well proportioned.



The Victory An Interesting and Charming Home Astonishingly Priced at \$975. We pay the Freight



DIGNIFIED simplicity was the aim of the thoughtful designers in creating the Victory. There is spread before you on these two pages a truly remarkable selection of interesting homes. Seven arrangements of the same size structure offer you an opportunity to pick exactly what floor plan your needs demand. These plans are worthy of a very careful and painstaking study. They are the result of our experience and knowledge of 18 years in planning homes. It would be almost impossible to secure a better planned home of this size than represented among these seven plans.

Splendidly manufactured siding and flooring; clear interior wood work—that is the kind of materials Aladdin furnishes. No finer quality grows. It is beautiful in grain, strong and lasting. Highest grade paints and varnishes are also supplied. You will be assured of a high type of material and construction. The Victory can be placed on a lot as narrow as 30 feet. The complete plans and illustrations and instructions furnished with each Aladdin house guard the home builder from costly mistakes and make the work pleasant and easy.

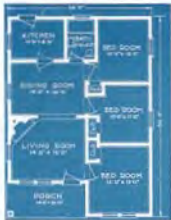


A Cozy Interior

This is how our experienced home-builder has arranged the interior. There is ample opportunity to express one's taste in this living room.

The Victory Plan W

Plan W offers you a porch, big living room and dining room, three splendid bed rooms, kitchen, bath and three bedroom closets. Note spaciousness of the carefully planned bed rooms. Doors and windows are thoughtfully considered in connection with the placement of bed and other furniture.



The Victory Plan W

Plumbing expense is held down by placement of bath room next to the kitchen. Ample wall space in kitchen gives opportunity for excellent arrangement of fixtures. Scientific design has made this a really big home at small cost.

The Victory Plan Z

This plan includes our inside cellar entrance, a feature that is of course much desired where a basement is a part of the home. Splendid living room, dining room, two bed rooms, kitchen, bath and closets complete the home.



The Victory Plan Z

ALADDIN—Homebuilder to the Nation



This is one of the most popular homes ever designed. It contains every modern convenience and is ideal in appearance, arrangement and comfort.

THE CHARM of the Dutch Colonial never fades. The early Dutch settlers along the coast of New England developed this type with its gambrel roof, shingles and broken roof lines. Aladdin designers have held true to this inspiration while actually giving full dimensions to the second floor in height, breadth and depth. No space is lost, ceiling being full height and square, yet the observer on the street gains the impression of a true gambrel type. Note the protected entrance, columned and inset—a true Colonial approach.

Examine minutely the placement of the rooms. Can you conceive a higher degree of perfection? The entrance hall with semi-open stairway and cloak closet demand your admiration the minute you enter. Arches lead to the right and left into living room and dining room. Think of the possibilities of a living room 26 feet deep and 14 feet wide! Leading from this interesting room is a library or den. On the other side of the house is found pantry separating dining room and kitchen, with rear entrance under the main stairway. There are six rooms on the second floor—and closets. It may be called a twelve-room home, and at a price that is unapproachable through any other source. The Capitol is priced in single construction at \$1932. The price in double construction is \$2254 (see page 10). Florida porch, size 8x14 feet, will be furnished by your adding \$76 to the price. If you want the 10x14 foot Puerto Cochere shown on right side of house add \$63 to price.

Specifications: Capitol—Size 36x26. (Single construction). 6x8 in. sills, 2x8 in. joists on 16 in. centers 1st and second floors. No. 1 tongued and grooved flooring, 2x4 inch wall and partition studding on 16 inch centers. Lath for lining all walls and ceilings. No. 1 drop siding for outside walls. No. 1 outside finish. 2x4 inch ceiling joists on 16 inch centers. 2x6 inch rafters on 24 inch centers. Roof sheathing laid light. Best quality green slate surfaced roofing. Casement windows, size of glass in each sash 26x28 inches, 1st floor; 20x24 inches 2nd floor. Sash glazed ready to hang. Bath room and kitchen supplied with check-rail window, size of glass in each sash 26x10 inches. Clear interior trim. Clear 6 inch trim casework baseboard. Doors size 2 feet 8 inches by 6 feet 8 inches, high quality fir. Front, rear and side doors upper half glazed. Attractive circle tread stairs as shown on plan. Cellar stairs under main stairs, 5 foot eared arch furnished where shown in plans. Two coats of paint for exterior. Stain and varnish for interior trim and doors. All nails, mortised locksets, hinges and double setting floor hinges, sash weights, sash cord, sash pulleys and sash locks to complete house. Height of ceilings 9 feet 1st floor, 8 feet 2nd floor. Ceilings on 2nd floor are full height not sloped. Roof 1/4 pitch. Bonded eaves.



Living Room—The Capitol

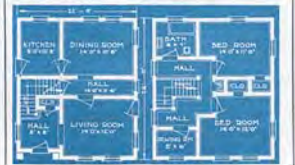
THE HOUSE THAT GROWS The Capitol No. 2

Here is an opportunity to start with a moderate size home—complete in every detail, and of excellent architectural design and later add to it to complete the larger home—the Capitol. The usual homes are not encountered when reconstructing this home as is often the case when changing or enlarging a home. The cost of the Capitol No. 2 in single construction is \$1896. Double construction cost is \$1997.



First Floor Plan—The Capitol

Second Floor Plan—The Capitol



The Liberty—A Splendid 2 Story, 7 Room Home—Price \$1068. We Pay the Freight

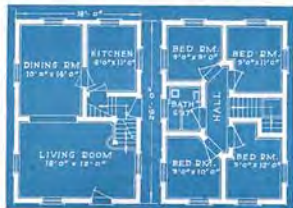


A STRONG, substantial, dignified and complete American home! Thus might be described in one sentence, the splendid Liberty. To avoid the wasting of a single penny, is a duty we all owe to our families and ourselves. To accomplish this object in the building of a home is the most laudable of all ambitions. Aladdin designers set about the task of creating a structure in which there would not be wasted one foot of material—one inch of space. Waste material, or waste space, means wasted dollars for the owner.

Examining minutely every feature of the Liberty. Clean square lines, well proportioned walls and roof, regular placement of windows, blend into perfect harmony. It pleases the eye at first impression, as well as under more continued study. Two interior arrangements are offered at the same price, one having three bed rooms and one with four bed rooms. The Liberty is priced at \$1068 for single construction and \$1252 for double construction. Porch size 16x8 feet is furnished by your adding \$123 to price. See page 16 for details double construction.

The Liberty—Plan K

For those whose necessities require four bedrooms the Liberty Plan K has been devised by our designers. Think of it! Living room, dining room, kitchen, bath and four bedrooms, all included in a house of the dimensions of the Liberty, and more remarkable still, at the price of \$1068. This home is big enough for a family of eight and offers all modern conveniences.



First Floor Plan K

Second Floor Plan K

SPECIFICATIONS

Single Construction. 2x6 inch studs. 2x4 inch joists on 16 inch centers 1st and 2nd floors. No. 1 tongue and groove flooring. 2x4 inch wall and partitions studding on 16 inch centers. Lath for lining all walls and ceilings. No. 1 drop ceiling for outside walls. No. 1 outside finish. 2x4 inch ceiling joists on 16 inch centers. 2x4 inch rafters on 24 inch centers. Hip rafters 2x4 inches. Roof sheathing 1/2 inch. Best quality green stain varnished outside. Check-all windows, size of pane in each 20x24 inches 1st floor, 20x24 inches 2nd floor. Each paneled ready to hang. Bathroom plan, each with 24x16 inches, brass interior trim. Clear 6 inch two member hardwood. Doors also 2 feet 6 inches by 6 feet 6 inches, highest quality fir. Front and rear doors upper hall placed. 7 foot yard arch. Attractive steel head main stairs. Cellar stairs under main stairs. Two coats of paint for exterior. Stain and varnish for interior trim and floors. All walls, mortised locksets, hinges, double acting flow hinges and spring window beds to complete house. Size of house 18x26 ft., Height of ceiling 9 ft., 1st floor—8 ft., 2nd floor—8 ft., 15 feet. Exposed over 1 foot projection.

The Liberty—Plan J

Plan J affords gratification to the careful and discerning observer because it illustrates a perfect example of avoidance of waste space. No unnecessary angles or projections are discoverable in the partitions dividing the rooms. Handsome semi-open staircase leads from generous living room to second floor, where are found three bedrooms, bath and splendid closets. Pantry and rear porch are valuable features of the first floor.



First Floor Plan J

Second Floor Plan J

Facts About the Aladdin Plan

THE Aladdin Plan of homebuilding has been in successful operation for eighteen years.

The whole purpose of the plan is to help builders of modest homes.

Its first object and principal benefit, is to save money for builders of modest homes.

The Aladdin Plan has saved \$200, \$300, \$500, \$800—\$1200 and even more money on the individual homes of thousands of home builders.

Our home-builder customers write us after finishing their homes and tell us these things.

They tell us how we helped them to buy their materials for less than their local lumber dealer would sell them.

They tell us how much better our lumber is than they could get from their local dealers.

They tell us how strong their homes are, how warm they are, how convenient the room arrangements are, and how pretty they look when finished.



How ALADDIN Saves You Money

The first-cut plan avoids wasting lumber when building—saves about \$18.00 out of every \$100.00 worth of lumber ordinarily used in building your home.

Nine-tenths of all lumber coming out of the forests are in 2-foot, 10-foot, 12-foot, 14-foot and 16-foot lengths. When you want to use other lengths you have to pay more money for the same quantity and quality. Aladdin designs houses to use standard lengths. That's the economy of standard parts and that's the same kind of manufacturing economy that enables automobiles to be manufactured so cheaply. And that is what enables us to put in higher quality at lower prices.

Rapid, automatic machinery handles this lumber so swiftly, so accurately and so perfectly, that one man at a machine in our mills will cut as much as nearly a hundred carpenters can in the same length of time. And you get the benefit of this saving.

The Aladdin system of cutting the lumber in the mill saves about \$30.00 out of every \$100.00 worth of carpenter labor—no against the old system of measure, try, cut and fit on the job.

Twenty Feet of Lumber From a Sixteen-Foot Board

Think of taking a six-inch board sixteen feet long and getting twenty feet of six-inch board out of it!

To eliminate waste by scientific planning, designing and cutting of lumber is to save your money from the waste pile.

W. J. Sovereign, president of The Aladdin Company, conceived this tremendous thought, originated, perfected, and established the system.



The principle has been as thoroughly established through the success of The Aladdin Company that it is now accepted and approved by lumbermen, contractors, engineers and architects.



HOME OFFICES OF THE ALADDIN COMPANY

Facts About the Aladdin Company

And these customers of ours tell us how pleased they are with all their dealings with us.

And, really, we are most pleased when they say this, for the Aladdin people are human. We are just ordinary people whose life work, life experiences are devoted to homebuilding.

devoted to making homebuilding simpler, more economical, easier and more pleasant for our customers.

Every stockholder in The Aladdin Company is a worker in the company. We are all interested in every customer and we are all interested in knowing that every customer is satisfied.

Aladdin Homes are the original and first ever sold where the materials were all prepared in the mill, cut to fit and ready to be mailed in place when the house is being built. The multi-cut house industry was founded by Aladdin—by W. J. and O. E. Sovereign and the present workers, in The Aladdin Company.

Build It Yourself We usually advise our customers to have a carpenter if possible, but we do say that any sensible man can build an Aladdin home if he follows our simple plan, instructions and detailed diagrams of erection.

Every piece of material is cut to fit, with a few exceptions. And these pieces are marked and numbered so that you know just when every piece goes where you look at the pictures and photographs we supply.

Of course if you build your own home, like so many other Aladdin customers have, you, too, will save the money you would have to pay a carpenter.

"It's just common horse sense," wrote a customer, after he had moved into his new Aladdin. "This man was so good because he built his Aladdin himself—and he was not a carpenter either."

Acid Profits of the Middlemen The Aladdin Company buys immense quantities of lumber from the forests, getting absolutely the lowest prices. You therefore buy direct, without any middlemen to add their profit to the price of your lumber, millwork and hardware.

If it any wonder our customers write us and tell us they saved \$300, \$500, \$800 and more, when we are able to avoid all these wastes that exist for the person who builds the old way?

For years many great corporations have been buying and building Aladdin homes for their employees. The United States Government and many states and cities have been our customers. These facts all prove that there is economy and satisfaction for our customers.

This Catalog Our Only Salesman

With this catalog, you are able to keep the profits in your own pocket that you ordinarily pay to your local dealers. Because we do not sell through dealers, they can't add their several hundred dollar profits to the goods you buy from us. You keep this money yourself.

When your dealer says "Don't buy your lumber out of town," ask him where he buys the lumber he wants to sell you.

You see he buys his lumber up here and the only money that stays in your town is the dealer's profit. Wouldn't you rather have it in your pocket than in his?

This catalog makes this saving—and many others.

ALADDIN Homes Not Portable

And please remember, always remember, that there is nothing "portable" about an Aladdin home. You can't take an Aladdin house down after it is built. It is designed, constructed and built just like the best architect-designed, contractor-built houses in your neighborhood. Aladdin houses are sturdy, warm and strong—real year-around homes. They have been built and lived in for years in Maine, North Dakota, Michigan, Canada—and in Alaska. The President, the General Manager and most of the executives of The Aladdin Company have been living in Aladdin homes for years.

Aladdin homes are designed to use standard lengths of lumber cut from standard lengths of logs as they come out of the forest. This saves waste of lumber; saves the \$18.00 out of every \$100.00 we speak of before.

Sturdy, Honest Lumber Makes Sturdy, Honest Homes

Early in its history, The Aladdin Company started to improve the quality of lumber that had been the custom to put into modest homes. It started to furnish beautiful, clear lumber for the doors and interior, woodwork. And ever since it has devoted its efforts to improving its quality so that the modest home should have as good quality as the biggest homes. The beautiful, velvet-grained Oregon fir and yellow pine used in Aladdin homes is the finest coming out of the forests. It takes the handsome stain, oils and varnish and holds the coloring permanently.

The joints furnished are standard high quality—the beautiful brushed brass hardware and locksets finish off the woodwork attractively. Our roofing is made by one of the largest companies in the country and is of the highest quality. Pleasure and pride can't help but come to you when you know how good a home you have built, and especially when you have secured all these good things and saved a lot of money too.

Some people will tell you not to build an Aladdin home. But most of them will be people who will lose more profit they expected to make out of you if you do. They will be people who want to sell you something, who will want to get your money. They will never be people who have built Aladdin homes.

ALADDIN Customers If you want to ask advice, it is only fair to yourself, and fair to us, to ask people who know about Aladdin homes. Can a man who hasn't built an Aladdin home know as much about it, or about us, as a man who has dealt with us? We will give you the names and addresses of many customers to write to, or call on. We wouldn't do that if we didn't know they saved money, would we? All right then, if a dealer or a contractor tells you not to build an Aladdin home, ask him for his reasons and investigate these reasons by talking with a man who has built an Aladdin home. Don't take anybody's advice, who has not actually built an Aladdin home. Get your facts from people who know.

Eighteen Years of Experience The homes shown in this book are the best we have planned in our eighteen years' experience. We have learned from furnishing homes for thousands of families, enough to make a city of a quarter of a million population. Each size has many different floor plan arrangements to suit your family and your tastes. We have designed these houses and priced them so that you can get into a home at the lowest possible cost, or you can have added values like porches, kitchen cabinets and other luxuries and necessities. You can buy as much or as little as you like. We want to satisfy you exactly.



The ALADDIN Guaranty Satisfaction, or your money back, is the standard guaranty ever written. When this guaranty is backed by a company whose assets run into the millions you are assured of absolute safety in all your dealings. The Aladdin Company guarantees your satisfaction or your money back in every transaction with us.

How Lumber is Cut to Fit

The illustration at the left demonstrates the great saving and the simple work erecting an Aladdin home. The material is cut to fit in our mills and numbered according to the blueprints which explain every step of the erection. The pieces fit together perfectly. And you save at least 18% waste lumber besides 30% to 40% of the labor of erection. Aladdin is the originator of the Resid-Cut System of construction and has saved thousands of homebuilders from \$300 to \$800 on their homes.



Summer Cottages A separate booklet is ready to be mailed to you, if you are interested in summer cottages. Aladdin Summer Cottages are single walled, exposed studding, single matched ceiling partitions, with rooms open to the rafters.



From the Pyramids to the Woolworth Building

To him who says the Resid-Cut System is not possible or impracticable, point to the Pyramids of Egypt, refer to Solomon's Temple as described in the Bible, or inspect Washington Monument, or the 57-story Woolworth Building in New York City. You will find that each was prepared, erected and completed by the Resid-Cut system. But it remained for The Aladdin Company to first apply the system to your benefit in the building of a home. And thousands of American families scattered over this broad land will testify to its economy and practical success.

The pyramids aren't portable, the Woolworth Building is not portable, nor are Aladdin homes portable.

If you attempt to tear apart, or dismantle an Aladdin home, the most expert constructor could not tell it from any first-class frame dwelling because there is no difference.

Painting You receive paint for painting the outside, two coats and stain and varnish for interior trim. You may choose natural oil and varnish, light or dark oak stain and varnish, or mahogany stain and varnish. These materials are standard high quality and make a beautifully finished job.

Masonry Chimneys and Fire Places

Chimneys can be located anywhere in the house you like, for we do not cut the masonry for these openings. If you do not want the fireplace which may be shown in the photograph, you need not build it. Of course, any excavation work and the foundation work must be done on the ground. Brick, stone and cement can be had in your locality as cheaply as we could furnish it. We furnish you a foundation plan to tell you how to proceed to build the kind of foundation you want.

Freight Exception

We pay the railroad freight on all our houses to all states, except the following: Texas, Louisiana, Oklahoma, New Mexico, Arkansas, Arizona, Nebraska, Colorado and Kansas. Write us for freight quotations on shipments to above states.

Terms and References

Aladdin homes are sold for cash only. We require the full price of the house to be sent with the order to obtain the prices quoted. If, however, you prefer to send only twenty-five per cent, or one-quarter of the price, with the order and pay the balance upon the arrival of the shipment, we will accept your order on this basis, providing you add \$10.00 to the price quoted to pay for expenses of shipping the house in this way.

NOTE—This catalog supersedes all previous catalogs, and all prices herein quoted are subject to revision April 1st, 1924, July 1st, 1924, and September 1st, 1924.

References

Any bank in the United States, Bradstreet's or Dun's commercial agencies, National City Bank of New York, with branches in all principal cities; First National Bank, Bay City; The Merchants National Bank, Wilmington, North Carolina; Northwestern National Bank, Portland, Oregon; First National Bank, Hattiesburg, Mississippi, or any city official or citizen of Bay City and our customers.

THE ALADDIN COMPANY

General Offices and Mills
BAY CITY, MICHIGAN

Copyright 1913 Branch Offices and Mills: Wilmington, N. C.,
Portland, Oregon; Toronto, Ont.

ALADDIN
WILMINGTON

315 Second Street



Showing Simple Plan of Laying Out Materials



Starting Construction First Day



Frame Work Up on Third Day



Progress of Work Seventh Day

How an ALADDIN Home Looks in Course of Construction

Of course, The Aladdin Residential System receives adverse criticism from some contractors, lumber dealers, and others. This criticism comes chiefly from those who have had no experience with, or knowledge of, Aladdin houses. Self-interest, prompted by loss of profit, begets the antagonism. One of the most amusing remarks is that the builder of an Aladdin house will lose so much time hauling out his material and fending the right piece as he will save by the Ready-Cut System. Of course this remark on the face of it is an admission that time is saved by the Aladdin System. However, any thought about time lost in hauling for pieces is immediately dispelled when you see the simple system of laying out materials that accompanies the instructions for every house, and when you understand that the length is marked on each piece of material, and that all pieces of the same length are interchangeable.



Exterior Finished On Eighteenth Day

Aladdin Achievements

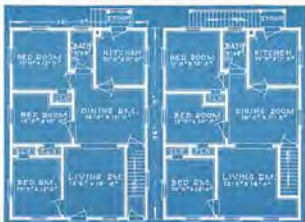
What Aladdin has done for others is important to you as indicating what we can do for you. Aladdin has built six cities. Aladdin houses received highest awards at the Panama-Pacific International Exposition (World's Fair) and Michigan State Agricultural Exposition. Selected by the United States Government to cooperate in the production of an ideal workman's cottage. Selected by State of Michigan to furnish houses for State officials. Furnished houses for the British Government. Furnished a house for the president of the Republic of Liberia, East Africa. We have furnished from one to three hundred and fifty Aladdin houses in each of the following great industrial concerns: A. D. Julliard & Co., Astor Chemical Co., Astor Explosive Co., Atlas Wood Iron & Steel Co., Atlantic Mills, Inc., Atlas Powder Co., Bristol Brass Co., Cabot and Herli Mining Co., Collier Medicine Co., Dominion Coal Co., Dow Chemical Co., Dupont Powder Co., Ford Colliers Co., H. E. Bell & W. G. Zoller, H. L. Barber & Co., Hercules Powder Co., Kent Mfg. Co., The Lukens Iron & Steel Co., M. A. Hanna Mining Co., Manchester Mfg. Co., Mark Mfg. Co., National Acme Mfg. Co., Pennsylvania Coal & Coke Corp., Pennsylvania R. R. Co., Pease Marquette R. R. Co., Pittsburg Plate Glass Co., Rich Creek Coal Co., Standard Oil Co., Standard Sigs Co., The Tule Water Pipe Co., Ltd., Valley Mould & Iron Co.

The Duplex No. 10—14 Rooms, Priced very Low—\$1765. We pay the freight

The Aladdin Duplex No. 10 presents an astonishing opportunity for profitable investment at the price quoted. This design has been erected during the past ten years in many localities and has proved to be a perfect type to meet the average demand. There are two seven-room apartment homes of most unusual attractions under this one roof. All materials as quoted in our specifications are included at the remarkable price in single construction of \$1765. If you want to include the 26x8 foot porch when this Duplex is shipped, add \$180 to above price. Shingled walls will be furnished as described on page 16. Double construction is priced at \$2065. See page 16 for details. This is a sturdy, strong and attractive design and its extremely low price together with present high rents will make a most attractive investment—a big return on the money. One of the biggest copper mines in the world purchased a number of these over ten years ago and report the highest extraction throughout all these years.



The Duplex No. 10—A fine example of modern 2-Apartment Dwelling



Duplex—First Floor

Duplex—Second Floor

Specifications

Duplex No. 10—Size 26x36. (Single construction) 6x8 cills. 2x4 inch joists on 16 inch centers—1st and 2nd floors. No. 1 tongued and grooved flooring. 2x4 inch wall partition straddling on 16 inch centers. No. 1 drop siding for outside walls. No. 1 outside finish. 2x4 inch ceiling joists on 16 inch centers. Rafters for lining all walls and ceilings. 2x6 inch rafters on 24 inch centers. Roof sheathing laid flat. Best quality green slate surfaced roofing. Check rail windows, size of glass in each sash 20x21 inches. Sash glazed ready to hang. Bath rooms supplied with check rail windows, size of glass in each sash, 26x16 inches. Clear interior trim. Clear 0 inch two member baseboard of attractive design. Doors size 2 feet 8 inches by 6 feet 8 inches, highest quality fir. Front and rear doors appear half glazed. 7 foot eared arch finishings where shown in plans. Front and rear stairs and steps as shown in plans. Two coats of paint for exterior. Stain and varnish for interior trim and doors. All nails, mortised locksets, hinges, double acting floor hinges and spring window bolts to complete. Height of ceilings 8 feet 1st and 2nd floors. Roof 3/4 pitch. Exposed eaves to 1 foot projection.

Extra Features Obtainable for ALADDIN Houses

For those Customers who wish to embellish their new homes with a few distinctive touches, we have provided a number of features, as shown here, at but slight additional costs



Sovereign Cabinet

This fine Sovereign Kitchen Cabinet has the following equipment: High-grade refrigerator-style nickel hardware. Interior of top compartments, white enameled. Drop roll curtain. Glass jar equipment consisting of swinging sugar bin with metal top and cut-off; one coffee, one tea and five spice jars. Large size tilting metal silver floor bin. Full sliding top of polished metal or white porcelain. Special bracket and block for food grinder. Sliding handed bread-board. Metal bread and cake drawer with sliding metal lid. Base

equipped is equipped with sliding metal shelf and pan rack. Base has complete 3-ply bottom with substantial built-up framework underneath. Ant-proof casters. Diet-proof lip construction on all doors and drawers. Height 70 in. Width 40 in. Depth 26 in. Crated weight, 220 pounds.

| | |
|--|---------|
| Golden oak with metal sliding top..... | \$31 00 |
| Golden oak with Porcelain sliding top..... | 33 00 |
| White enamel with Porcelain sliding top..... | 36 00 |

Price, F. O. B. Factory, Indiana

Foundation Posts

We can furnish with house shipment, foundation posts 8 feet long at \$1.00 per post.

Green Slate Surfacd Shingles

We can furnish green slate-surfaced shingles instead of the slate-surfaced roofing specified on the various houses at the following additional charge.

| | | | |
|----------------|---------|--------------------|---------|
| Columbia..... | \$28.00 | Duplex No. 10..... | \$52.00 |
| Liberty..... | 30.00 | Capitol..... | 60.00 |
| Cyclone..... | 32.00 | Pilgrim..... | 40.00 |
| Victory..... | 32.00 | Forest Hill..... | 8.00 |
| Mayflower..... | 26.00 | Ford 10x14..... | 12.00 |
| Adams..... | 35.00 | Stubbaker..... | 15.00 |
| Portonia..... | 32.00 | Lanshin..... | 24.00 |

They are made of the same high grade materials as the roofing. The size of each shingle is 8 inches wide by 12 1/2 inches long. They lay 4 inches to the weather, thereby giving you better than three thickness on your roof. We can recommend them in every way to give perfect satisfaction.

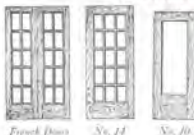
Cellar Windows

For wall opening 3 feet wide by 2 feet high, complete with frame, glazed sash and hardware..... \$5.30

For wall opening 3 feet wide by 2 feet 8 inches high, complete with frame, glazed sash and hardware..... 4.10

It is not necessary to forward the cellar frames before the house is shipped for by leaving the wall openings described above the frames can be set in after the foundation has been erected.

SPECIAL DOORS



French Doors No. 14 No. 10

Here we show two types of French doors and one type of French door for interior arch openings. Prices of these doors of course include glass together with material for finishing in accordance with that supplied with the house you purchase. Pair of French doors are priced at \$26.85. Full glass door No. 10 instead of mesh door specified furnished at additional price of \$1.25. Divided light front.

French door No. 14 and full length glass door No. 10 are each size 2 feet 8 inches x 6 feet 8 inches. The pair of French doors are each size 2 feet x 7 feet, making the pair 4 feet x 7 feet.

Kitchen Cabinet

3-C-1

The housewife to-day looks upon a kitchen cabinet as a real necessity in the home. Because of this The Aladdin Company designed a kitchen cabinet and broom closet of superior convenience. The cabinet is 5 feet wide over all and 7 feet high. The bottom section is 18 inches deep and the top section is 12 inches in depth. The broom closet is 18 inches wide and 12 inches deep. This cabinet can be shipped with your house. These kitchen cabinets are constructed of the finest Oregon fir, a very high grade lumber with a beautiful grain and shipped knocked down, unfinished. All material machined and



rated ready for assembly. Price \$20.00

The Homecraft Bookcase Arch

Has been used in thousands of homes and in every case has given perfect satisfaction. The eaves are 2 1/2 feet wide, the columns 8 inches square. Sent out complete with hardware and glass doors, as shown. Bookcase Arch 3C-6.....\$35.00



ALADDIN Medicine Chest

A very convenient addition to any bathroom. Made to be placed in a recess in the wall, the face to come flush with the plaster. Size of recess required in wall is 20 inches wide, 26 inches high, 4 1/2 inches deep. Has three adjustable wood shelves. Medicine Chest 3C-1 \$6.00



Grade Cellar Entrance No. 2

This addition size 7 feet x 6 feet is designed to afford a grade cellar entrance and can be attached to any Aladdin house. All material necessary for the complete addition is furnished together with steps to kitchen and steps to basement. Price of this addition in single construction \$51, double construction \$59.



Gable Entrance Hood

Here's an attractive little feature that may be added to either the front or rear entrance of any Aladdin house. It is of the rustic type with exposed rafters and attractive brackets. It affords excellent protection during inclement weather. This is furnished complete with any Aladdin house at a cost of \$12.



Quality Fixtures at Wholesale Prices



Bath Room Fixture
Extends 7 inches. Finished in polished nickel with white shade having clear stripes.
No. 25-1132..... \$1.40

Hall Fixture
Finished with Silhouette. Mounted in lacquered brass and black.
No. 25-1136..... \$1.40

Dining Room Fixture
Length 23 inches, spread 16 inches. Lighter and brighter than other models with ornamental shades. The shades are complete, including their glass. Finished in polished brass and black.
No. 25-1130..... \$1.75



Bed Room Fixture
Finished with Silhouette. Bath shade. Mounted in lacquered brass and black.
No. 25-1138..... \$1.50

Porch Fixture
Finished with Silhouette. Bath shade. Mounted in lacquered brass and black.
No. 25-1136..... \$1.50



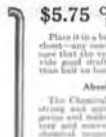
Living Room Fixture
Length 20 inches, spread 16 inches. Shades of white glass, with decorative stripes. Finished in lacquered brass and black.
No. 25-1132..... \$1.50

ALL THE ABOVE FIXTURES QUOTED WITHOUT BULBS

ALADDIN CHEMICAL CLOSET

\$5.75 Complete With Vent Pipe and Chemical

Place it in a bath or bedroom, rather than in any convenient place, rather than in any convenient place, rather than in any convenient place, rather than in any convenient place.



Grey Enamel Finish

Absolutely Odorless

The Chemical closet is practically strong and works in various directions all grades and makes the most effective and most successful. One of the most successful chemical closets ever devised according to the latest scientific methods. It is absolutely odorless, and it is the most effective and most successful chemical closet ever devised according to the latest scientific methods.

Complete Outfit Includes Toilet

Our list of toilet articles, wall reflector, toilet paper holder and set of glass of chemical closet. No. 25-1131 Aladdin Chemical closet complete outfit including toilet. No. 25-1131, P.O. B. Factory.



Bath Tub

White porcelain finished. Standard size. Finished in polished nickel. 5 feet or 6 feet long, 21 inches wide and 17 inches deep. Has 2 inch hot and cold water, 2 1/2 inch hot and cold water. Fitted with solid glass top and supply and waste, double drain, shower and other.

Kitchen Sink

Our 24 1/2 inch long sink with solid top. Finished in grey-vitreous porcelain. Available in a wide variety of styles. Complete with hot and cold pipes. No. 25-1130 Extra 1/2 inch to four..... \$10.00



Closet Combination

Has copper lined tank, highly polished, and set. Has 1/2 inch hot and cold water. Complete with solid glass top, supply and waste. Price..... \$10.00



Lavatory

A 24 1/2 inch long white porcelain finished lavatory. 12 1/2 inch wide and 17 inches deep. Has 1/2 inch hot and cold water. Complete with solid glass top, supply and waste. Price..... \$14.00



Range Boiler

Our 30 gallon galvanized range boiler. Guaranteed working pressure of 45 lbs. Construction with steel, brass and copper. No. 1123 Standard Grade..... \$12.00 No. 1123 Extra Heavy Grade..... \$14.00

NOTICE—All prices on this page F. O. B. Factory and subject to revision April 1st, July 1st, Sept. 1st.

PRICES FOR HEATING AND ELECTRIC WIRING

We list below prices on equipment you will ultimately need for your home. Types of wiring cover necessary No. 14 B. C. wire for complete installation of your electric wiring system, an well as such materials to connect a light opening in each room, front porch, back porch, etc.

| Room | Wiring | RECEIVING SYSTEM | PERCENTAGE | Hot Air Pipe |
|-------------------|---------|------------------|------------|--------------|
| The Colony No. 1 | \$15.75 | \$1.00 (5%)-15% | 100.75 | 100.75 |
| The Colony No. 2 | 12.00 | 1.00 (5%)-15% | 100.75 | 100.75 |
| The Colony No. 3 | 10.00 | 1.00 (5%)-15% | 100.75 | 100.75 |
| The Colony No. 4 | 10.00 | 1.00 (5%)-15% | 100.75 | 100.75 |
| The Colony No. 5 | 10.00 | 1.00 (5%)-15% | 100.75 | 100.75 |
| The Colony No. 6 | 10.00 | 1.00 (5%)-15% | 100.75 | 100.75 |
| The Colony No. 7 | 10.00 | 1.00 (5%)-15% | 100.75 | 100.75 |
| The Colony No. 8 | 10.00 | 1.00 (5%)-15% | 100.75 | 100.75 |
| The Colony No. 9 | 10.00 | 1.00 (5%)-15% | 100.75 | 100.75 |
| The Colony No. 10 | 10.00 | 1.00 (5%)-15% | 100.75 | 100.75 |
| The Colony No. 11 | 10.00 | 1.00 (5%)-15% | 100.75 | 100.75 |
| The Colony No. 12 | 10.00 | 1.00 (5%)-15% | 100.75 | 100.75 |
| The Colony No. 13 | 10.00 | 1.00 (5%)-15% | 100.75 | 100.75 |
| The Colony No. 14 | 10.00 | 1.00 (5%)-15% | 100.75 | 100.75 |
| The Colony No. 15 | 10.00 | 1.00 (5%)-15% | 100.75 | 100.75 |
| The Colony No. 16 | 10.00 | 1.00 (5%)-15% | 100.75 | 100.75 |
| The Colony No. 17 | 10.00 | 1.00 (5%)-15% | 100.75 | 100.75 |
| The Colony No. 18 | 10.00 | 1.00 (5%)-15% | 100.75 | 100.75 |
| The Colony No. 19 | 10.00 | 1.00 (5%)-15% | 100.75 | 100.75 |
| The Colony No. 20 | 10.00 | 1.00 (5%)-15% | 100.75 | 100.75 |
| The Colony No. 21 | 10.00 | 1.00 (5%)-15% | 100.75 | 100.75 |
| The Colony No. 22 | 10.00 | 1.00 (5%)-15% | 100.75 | 100.75 |
| The Colony No. 23 | 10.00 | 1.00 (5%)-15% | 100.75 | 100.75 |
| The Colony No. 24 | 10.00 | 1.00 (5%)-15% | 100.75 | 100.75 |
| The Colony No. 25 | 10.00 | 1.00 (5%)-15% | 100.75 | 100.75 |
| The Colony No. 26 | 10.00 | 1.00 (5%)-15% | 100.75 | 100.75 |
| The Colony No. 27 | 10.00 | 1.00 (5%)-15% | 100.75 | 100.75 |
| The Colony No. 28 | 10.00 | 1.00 (5%)-15% | 100.75 | 100.75 |
| The Colony No. 29 | 10.00 | 1.00 (5%)-15% | 100.75 | 100.75 |
| The Colony No. 30 | 10.00 | 1.00 (5%)-15% | 100.75 | 100.75 |

ALADDIN RECIRCULATING FURNACE

In Aladdin Furnaces are embodied the latest and most perfect idea of water pit heating, and built so well that you can guarantee the workings of these heaters against inferior workmanship and materials for a period of FIVE YEARS. The central grate will easily handle 100 lbs.

Get The Cost of Heating
Think of it! A complete heating plant that costs as little as a good stove and yet heats your entire home with less fuel than any other heater. It is a complete heating plant that costs as little as a good stove and yet heats your entire home with less fuel than any other heater.

How It Works
The Aladdin furnace is a complete heating plant that costs as little as a good stove and yet heats your entire home with less fuel than any other heater. It is a complete heating plant that costs as little as a good stove and yet heats your entire home with less fuel than any other heater.



Complete
Complete equipment includes boiler, pipes, flues, and vent pipe. No other work is required. The furnace is a complete heating plant that costs as little as a good stove and yet heats your entire home with less fuel than any other heater.

Ask for Catalogue Showing Other Furnaces

The Adams—A typical American Home—Price \$1230 We pay the Freight



"It is just the finest type of square house I have ever seen designed or built," is the comment made by many owners of the Adams. Can you conceive how with straight architectural lines, any more pleasing or substantial style of home of this size could have been secured? Note the exposed rafters, shingled gable, handsome porch and mottled belt at second story. A spacious living room with open stairway, well proportioned dining room and model kitchen with grade cellar entrance complete a perfect first floor. Not an inch of waste space. The second floor contains three excellent bed rooms, four closets and bath room. Price in single construction \$1230, as per specifications below. Price in double construction \$1455. If you want porch size 16x8 feet shipped with house add \$120 to price. See specifications in double construction underneath floor plans on this page.

Specifications, The Adams Size 22x26. (Single construction); 6x6 sills; 2x8 inch joists on 16 inch centers 1st and 2nd floors. No. 1 tongued and grooved flooring. 2x4 inch wall and partition studding on 15 inch centers. Lath for lining all walls and ceilings. No. 1 drop siding for outside walls. No. 1 outside finish. 2x4 inch ceiling joists on 16 inch centers. 2x4 inch rafters on 24 inch centers. Roof sheathing laid tight. Best quality green slate surfaced roofing. Check rail windows, size of glass in each sash 26x28 inches 1st floor, 26x24 2nd floor. Sash glazed ready to hang. Kitchen and bath rooms supplied with check rail window, size of glass in each sash 26x16 inches. Clear interior trim. Clear 6 inch two member baseboard. Doors size 2 feet 8 inches by 6 feet 8 inches, highest quality fir. Front and rear doors upper half glazed. 6 foot eared arch furnished where shown in plans. Attractive circle tread stairs as shown on plans. Grade entrance cellar stairs under main stairs. Two coats of paint for exterior. Stain and varnish for interior trim and doors. All nails, mortised locksets, hinges, double acting floor hinges and spring window bolts to complete house. Height of ceiling 9 feet 1st floor—8 feet 2nd floor. Roof $\frac{1}{2}$ pitch. Exposed eaves 1 foot projection.



First Floor Plan



Second Floor Plan

General Specifications Double Construction

Specifications for double construction are the same as single construction, but with the following additional materials included; Sub-floor sheathing under finished floor with building paper to be placed between the two floors. Outside wall sheathing under bevel siding with building paper to be placed between. Sash weights, sash cords, sash pulleys, sash locks for all double sliding windows. Additional nails for the above additional material.

SHINGLED WALLS

Shingled walls can not be furnished for single construction. At the double construction price we will furnish stingles for the side walls instead of siding without additional charge which includes all other features called for in double construction.

STUCCO WALLS

Sheathing and lath for stucco side walls will be furnished instead of siding for the side walls without additional charge.

Complete blue prints showing every step of erection are furnished with every order so that even though you may not be a carpenter, you will know just how to erect your house. Any of these houses will be reviewed without additional charge. The opening for fireplaces shown in some of the photographs is not set so that the chimney may be omitted or its location changed from where it is shown in the picture.

THE ALADDIN COMPANY

BAY CITY, MICHIGAN

Wilmington, No. Car., Portland, Oregon, Toronto, Ontario

HOME BUILDERS TO THE NATION