

Aladdin Homes

We Pay the Freight

"Sold By The Golden Rule"

No. 36

The Aladdin Company offers you an opportunity to buy a complete house direct from the manufacturer saving four profits on the lumber, mill-work, hardware and labor.



The Bluebird—A Home of Dream-like Perfection—Price \$799. And We Pay the Freight

Tens of Thousands of American families are living in Aladdin homes. For nineteen years this organization has devoted its energies, its brains and its experience to making home building simpler, easier and less expensive. The Savings Aladdin offers you, the Service Aladdin offers you and the Safety Aladdin offers you are completely explained on pages 14 and 15 of this book.

THE BLUEBIRD is a home of beautiful proportions, interesting detail and excellent interior arrangements. To own it insures the fullest satisfaction in everything that goes to make a real home. It will measure up to your highest expectations from the strength of its sturdy timbers to the charm and beauty of woodwork and finish. Three floor plan arrangements are shown below. They are all priced alike. The price in single construction, specifications for which are shown at the bottom of the page, is \$799. The price in double construction is \$925 and the specifications are the same as below except that the following materials are added: Sub-floor sheathing under finished floor with building paper between two floors, outside wall sheathing under bevel siding with building paper between, sash weights, cord, pulleys and locks for all double sliding windows and additional nails for this extra material. Porch size 16'x8' shown in picture may be had by adding \$108 to above price.

BLUE BIRD—(Single Construction.) Size 22x24, 4x6 inch built up sill, 2x8 inch joists on 16 inch centers. Clear 2 1/4 inch face tongue and grooved flooring. 2x4 inch wall and partitions spooling on 16 inch centers. Lath for lining all walls and ceilings. Clear A redwood bevel siding for outside walls. Clear outside finish. 2x4 inch ceiling joists on 16 inch centers. 2x4 rafters on 24 inch centers. Roof sheathing laid tight. Best quality green slate-surfaced roofing. Check rail windows and frames, size of glass in each sash 26x24 inches. Bath room and kitchen, size of glass in each sash 24x16 inches. Clear interior trim. Clear 6 inch two number base-board. Door frames and doors size 2 feet 8 inches by 6 feet 8 inches, highest quality fir. Front and rear doors upper half glazed. Cased arch furnished where shown in plan. Cellar stairs furnished where shown in plan. Two coats of paint for exterior. Stain and varnish for interior trim and doors. All nails, mortised brackets, hinges, double setting floor hangers and spring window bolts to complete house. Height of ceiling 8 feet. Roof 1/4 pitch. Exposed eaves 1 foot projection.

Blue Bird No. 1

Blue Bird No. 2

Blue Bird No. 3



The Columbia - A Real Gem — 9 Plans — Price \$498. We Pay the Freight



THIS pretty cottage offers a chance to start home ownership on the very smallest of savings. Later successes may come enabling a larger and more expensive home. But the Columbia is the starting point, conserving expenses, inspiring thrift, and saving rent.

You may choose any one of the nine floor plans shown. They are all priced alike—\$498 and we pay the freight. The Columbia is size 18x26 ft. Strong 4x6 built-up sill supports clean straight 2x6 No. 1 floor joists on 24 inch centers. Studding and ceiling joists are of splendid No. 1 2x4 stock and on 16 inch centers. Rafters of same stock on 24 inch centers. Finest grade close grained, clear tongued and grooved flooring with 2 1/4 inch face, supplied for every house. Beautiful clear A Redwood bevel siding offers indestructible protection to the home, while the exposed finish lumber such as corner boards, porch work, window and door casings are practically free from any defect such as knots, etc. No. 1 air dried lath are supplied for all walls and ceilings. Sound roof sheathing is to be laid tight. Roof is covered with best grade green slate surfaced roofing. Double sliding sash windows with clear glass, size 26x24, glazed ready to hang for all rooms except bath room, where swinging

(Continued on next page)



Columbia No. 8

Included in the Columbia No. 8 are a porch, large living room, combined dining room and kitchen, two bedrooms, and bath. Ample room for a family of four. The picture shown above applies to Columbia No. 8.



Columbia No. 4 DEC 31 1924

No. 4 is a very popular arrangement of big living room, kitchen, bath and two bedrooms. All rooms are the maximum size obtainable in these dimensions.



Columbia No. 5

The rooms in No. 5 are proportioned differently although of the same accommodations as shown in plan No. 4. It has found a warm place in the hearts of those who have built it.



Columbia No. 6

Columbia No. 6 gives big living room, and dining room, with two bedrooms and kitchen. This type is desirable for those who are unable to obtain water or sewerage for modern conveniences.

The Savings After Building a Small Home Will Add More to Your Happiness Than the Luxuries of a Big Home. The COLUMBIAS are Priced at \$498 — and We Pay the Freight



Porch for Columbias

The porch shown in the accompanying picture will be furnished for \$55.00. It is size 14x6 ft. and price includes all materials complete.

(Continued from page 9)

casement glass size 18x24 is furnished. Interior woodwork is made of clear beautiful grained stock, while all inside doors are of handsome two-panel design, size 2 ft. 8 in. by 6 ft. 8 in. Glass in upper half of front and rear doors. Cellar stairs furnished where shown in plans. Highest grade paint manufactured is supplied for two coats for outside while stain and varnish is furnished for the interior trim and doors. This quality insures perfect protection to materials and most attractive finish. Mortised locksets with brushed brass escutcheons in attractive designs come for each door in the house, except dining room door which is furnished with double acting floor hinge. Spring window bolts for all windows together with all nails necessary for constructing house are included. The height of ceilings is 8 feet and the roof has one quarter pitch. Exposed eaves are of one foot projection. The foregoing is an accurate description of the Columbia as furnished at \$498 in Single Construction. Double Construction is identical except that following materials are added: Outside wall sheathing under bevel siding with building paper between; sub-floor sheathing under finish floor with building paper between two floors. Sash weights, sash pulleys, and sash locks for all double sliding windows and additional nails for the above materials. Price of any Columbia in Double Construction is \$597.



Columbia No. 10

Columbia No. 10 is designed with inside cellar entrance and includes a two bedroom plan. It can be faced either way on your lot by transposing door and window in living room.



Columbia No. 2

No. 2 is another variation of this remarkable design wherein two bedrooms are included with the big living room, kitchen and bath. It is a big seller and never fails to delight its owners.



Columbia No. 1

Here is a very popular plan for a small family. It is arranged with large living room, dining room, kitchen, bedroom and bath. All rooms have ample wall space.



Columbia No. 9

This plan of Columbia includes an inside cellar entrance—a complete little home having living room, dining room, bedroom, kitchen and bath room.



Columbia No. 7

No. 7 illustrates another variation of the inset porch on the Columbia. It also includes living room, dining room, kitchen, and two bedrooms. It is a cozy little nest for a family of four.



Be it ever so humble—"it's our own"

The Cedars—A Real Beauty—5 Plans—Price \$648. And We Pay The Freight



THE CEDARS is a beautiful bungalow, marvelously priced and remarkably designed. The photograph above illustrates the charm and home appeal of the exterior. From the five floor plan arrangements shown here you will be sure to find one that exactly meets your ideas of a comfortable, convenient, sturdy home.

The price in single construction, specifications for which are given at the bottom of the next page, is **\$648** which includes outside walls furnished with siding instead of shingles. Shingles will be furnished at the double construction price.

The price of the Cedars in double construction is **\$769** and the specifications are the same as for single construction except that the following materials are added: Sub-floor sheathing under finish floor with building paper to be placed between the two floors, outside wall sheathing under bevel siding or shingles with building paper to be placed between, sash weights, cord, pulleys and sash locks for all double sliding windows, additional nails for the above extra materials. Porch shown in picture may be had by adding **\$108** to the price. Size of porch 16 feet by 8 feet.

The Cedars — Plan 1

Plan 1 of the Cedars design offers a type with dining room, arched opening to living room, two bedrooms, kitchen, bath and pantry. It is a much-sought after type and never fails to make a happy little home. Note the double windows in living room and dining room.



The Cedars — Plan 2

The Cedars, Plan 2, presents a type with inset front porch together with a cozy arrangement of rooms. Note especially the closets of each bedroom with an extra closet from living room. Two fine bedrooms with bath between and big living room and kitchen offer every comfort.



The Cedars — Plan 3

Here is a plan for a family of six. Three bedrooms, living room, kitchen, dining alcove and bath. A cozy, convenient little home as you will agree. Porch size 16x8 feet will be furnished like shown in picture, for **\$108.00** additional.



The Cedars — Plan 4

The Cedars, Plan 4, shown below, is produced as the result of a demand for three bedrooms, with big living room, and big kitchen. It also has double windows in the two latter rooms. As mentioned above the porch shown in picture may be had by adding **\$108.00** to the above price.



The Cedars—Plan 5

This floor plan arrangement is a highly popular one. Think of such a complete home—containing living room, dining room, kitchen, two bedrooms, bath and inside cellar entrance for the astonishingly small price of **\$648**. Plan No. 5 shown at the right. Remember that the price of the Cedars is freight paid to your station.





THE POTOMAC is a master design. Colonial atmosphere is ever appealing to the home owner for it bespeaks hospitality, generosity, old-fashioned simplicity and true goodness.

From its clean straight timbers to its beautifully machined siding, and handsomely grained woodwork it represents the very best in everything desirable in a real home. Three attractive floor plan arrangements for the Potomac are shown here. You may have sheathing and lath for a stucco exterior without adding anything to the above price. Pergola type porch comes extra at \$69.—size 8x14 feet. The price of the Potomac in single construction is \$949 as described in specifications below. The price in double construction is \$1098 with specifications the same as below except that the following materials are added: Sub-floor sheathing below finish floor with building paper between; outside wall sheathing under bevel siding with building paper between, sash weights, cords and sash locks, for all double sliding windows and extra nails for this additional material.

Specifications for Potomac

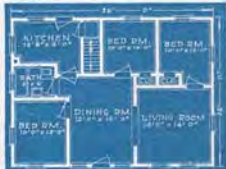
(Single Construction.) Size 36 feet by 26 feet. 6x6 inch built-up sill. 2x8 inch floor joists on 16 inch centers. Clear 2 1/4 inch face tongued and grooved flooring. 2x4 inch wall and partition studing on 16 inch centers. Lath for lining all walls and ceilings. Clear A redwood bevel siding for outside walls. Clear outside finish. 2x4 inch ceiling joists on 16 inch centers. 2x6 inch rafters on 24 inch centers. Roof sheathing laid tight. Best quality green slate surfaced roofing. Check rail windows and frames, size of glass in each sash 20x24 inches, sash glazed ready to hang. Kitchen and bath room supplied with check rail windows, size of glass in each sash 26x16 inches. Clear interior trim. Clear 6 inch two member baseboard of attractive design. Door frames and doors size 2 ft. 8 inches by 6 ft. 8 inches, highest quality fir. Front and rear doors glazed upper half, cellar stairs furnished where shown in plans. Two coats of paint for exterior. Stain and varnish for interior trim and doors. All nails, mortised locksets, hinges, double acting floor hinges and spring window bolts to complete house. Height of ceiling 8 feet. Roof 5/8 pitch. Exposed eaves 1 foot projection.

Specifications for Cedars

CEDARS—(Single Construction.) Size 22x36, 6x6 inch built-up sill. 2x8 inch joists on 16 inch centers. Clear 2 1/4 inch face tongued and grooved flooring. 2x4 inch wall and partition studing on 16 inch centers. Lath for lining all walls and ceilings. Clear A redwood bevel siding for outside walls. Clear outside finish. 2x4 inch ceiling joists on 16 inch centers. 2x4 rafters on 24 inch centers. Roof sheathing laid tight. Best quality green slate surfaced roofing. Check rail windows and frames, size of glass in each sash 20x24 inches. Bath room has swinging casement, size of glass 18x24 inches. Clear interior trim. Clear 6 inch two member baseboard. Door frames and doors size 2 feet 8 inches by 6 feet 8 inches, highest quality fir. Front and rear doors upper half glazed. Casement arch furnished where shown in plans. Two coats of paint for exterior. Stain and varnish for interior trim and doors. All nails, mortised locksets, hinges, double acting floor hinges and spring window bolts to complete house. Height of ceiling 8 feet. Roof 5/8 pitch. Exposed eaves 1 foot projection.

The Potomac—Plan L

This plan gives full accommodations for a family of six, having three bedrooms. A fine living room, extra large dining room, bath, kitchen and inside cellar entrance complete this desirable arrangement.



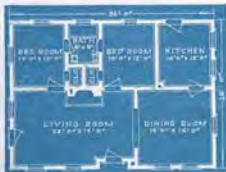
The Potomac—Plan Q

The Potomac Style Q offers a room arrangement that gives most unusual satisfaction to all owners. Splendid light and good air are secured from the carefully studded placing of windows. This will make a perfectly appointed home.



The Potomac—Plan M

In Plan M, shown below, we find an arrangement that has had a long period of popularity with our customers. A big living room, size 22x14 feet with fine light and convenient access to other rooms, is a delight to the family. The dining room is 14x14 feet. Other rooms are well proportioned.



The Victory

An Interesting and Charming Home Astonishingly Priced at

\$949.

We pay the Freight



DIGNIFIED simplicity was the aim of the thoughtful designers in creating the Victory. There is spread before you on these two pages a truly remarkable selection of interesting homes. Seven arrangements of the same size structure offer you an opportunity to pick exactly what floor plan your needs demand. These plans are worthy of a very careful and painstaking study. They are the result of our experience and knowledge of 19 years in planning homes. It would be almost impossible to secure a better planned home of this size than represented among these seven plans.

Splendidly manufactured siding and flooring; clear interior wood work—that's the kind of material Aladdin furnishes. No finer quality grows. It is beautiful in grain, strong and lasting. Highest grade paints and varnishes are also supplied. You will be assured of a high type of material and construction. The Victory can be placed on a lot as narrow as 30 feet. The complete plans and illustrations and instructions furnished with each Aladdin house guard the home builder from costly mistakes and make the work pleasant and easy.

The Victory Plan W

Plan W offers you a porch, big living room and dining room, three splendid bedrooms, kitchen, bath and three bedroom closets. Note spaciousness of the carefully planned bedrooms. Doors and windows are thoughtfully considered in connection with the placement of bed and other furniture.



The Victory Plan W

The Victory Plan Z

This plan includes our inside cellar entrance, a feature that is of course much desired where a basement is a part of the home. Splendid living room, dining room, two bedrooms, kitchen, bath and large closets complete the home.



The Victory Plan Z



A Cozy Interior

This is how one experienced home-maker has arranged the interior. There is ample opportunity to express one's taste in this roomy home.

ALADDIN—Homebuilder to the Nation

Here Are Five Other Fine Plans of the Victory to Choose From. They Are All Priced the Same—\$949., and We Pay the Freight.

THE five plans on this page, any one of which may be had at the above quoted price, are all tested plans, having been built many times. There are valuable features included in each, yet each offers a particular arrangement for a particular need. If you desire to stucco the outside of your home, we will furnish sheathing and lath for the outside walls at the price quoted above. Price in single construction \$949 as described in specifications below. Price of Victory in double construction is \$1098 and specifications are same as below except that following materials are added: Sub-floor sheathing under finished floor, with building paper to be placed between the two floors; outside wall sheathing under level siding with building paper to be placed between; sash weights, cords, pulleys and sash locks for all double sliding windows; additional nails for above extra materials.

SPECIFICATIONS FOR ALL VICTORY TYPES

Victory—(Single Construction.) Size 26x36. 6x6 inch built up sill. 2x8 inch joists on 16 inch centers. Clear 2 1/2 inch face tongue and grooved flooring. 2x4 inch wall and partition studs on 16 inch centers. Lath for lining all walls and ceilings. Clear A redwood bevel siding for outside walls. Clear outside finish. 2x4 inch ceiling joists on 16 inch centers. 2x6 inch rafters on 24 inch centers. Roof sheathing laid tight. Best quality green slate-surfaced roofing. Check rail windows and frames, size of glass in each sash 26x24 inches, sash glazed ready to hang. Bathroom supplied with check rail window, size of glass in each sash, 26x16 inches. Clear interior trim. Clear 6 inch two member baseboard of attractive design. Door frames and doors size 2 feet 8 inches by 6 feet 8 inches, highest quality fir. Front and rear doors glazed upper half. Cellar stairs furnished where shown in plans. Two coats of paint for exterior. Stain and varnish for interior trim and doors. All nails, mortised locksets, hinges, double acting floor hinges and spring window bolts to complete house. Size of house 26x36 feet. Height of ceiling 8 feet. Roof 3/4 pitch. Exposed eaves 1 foot projection.



Picture of Victory Showing Big Porch

The front porch shown in illustration above is also 24x8 feet and will be furnished at an extra cost of \$148. It is designed for use on side or front of any of these plans and the photo above gives a splendid idea of the appearance of the Victory with this attractive porch.

The Victory Plan A

Complete conveniences for a family of six are represented in the interior arrangements of the Victory Plan A. The living room has unusual wall space, and opening as it does through an arch to the dining room there is an impression of spaciousness which is the result of a depth of 24 feet. The bath is well detached, a desirable feature. Note especially the three large bedrooms, each with closet. A study of the window placements will reveal excellent light and airiness. Plan A shown at the right.



All designs shown in this catalog are priced in both single and double construction and the porches are quoted separately. We have found from our aluminum yards experience in the manufacture of window frames that a great many people desire to order the house first and then build the porch on at some future date. We have also found that some desire single construction and some double construction. Closet doors are not shown, or included in our plans as a great security against the doors swelling, but the standard openings left so they can use a certain size of closet. If closet doors are desired they can be supplied at \$5.00 each, complete with mortised lock set and hinges.

The Victory—Plan E

In the Victory Plan E within the compass of 26x36 feet there is included a 12x8 foot porch, generous sized living room and dining room, two bedrooms with unusually large closets, a check closet, fine kitchen and good bath room. The location and arrangement of the several rooms are ideal.

The Victory—Plan X

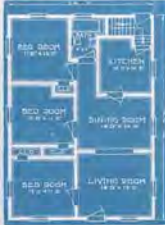
Here is a new type Victory which includes a central hall separating the rooms into two groups of three-rooms each side. The bath room is located at end of this hall. A big living room, dining room, three bedrooms, kitchen, bath, closets and inside cellar entrance make a home complete to the last detail.

The Victory—Plan Y

Here is a three bedroom Victory with grade cellar entrance. Each bedroom has closet, the big living room is separated from dining room with an arch while hall leads to bath room. This is a fine type of complete home that will give the best of satisfaction to all owners.

The Victory—Plan F

Here is a design especially presented for those who demand a spacious living room. Light and air enter from three sides as it extends for 26 feet across the entire house—big enough for a dance. This plan has been a popular one for the family of three or four and will be much admired.



The Marigold—Remarkable for its Low First Cost—Price \$825. And We Pay the Freight



THE MARIGOLD offers a story and a half home that can be built at the very lowest cost. The price quoted above provides you with the home with the first floor finished in the same way as all our other houses are furnished. The second floor is unfinished except for the floor. The Marigold can be furnished in either of the two floor plans shown below. Regardless of which plan you select it is possible for you to arrange for two extra bed rooms on the second floor. Our suggestion of a convenient and practical arrangement is shown opposite the first floor plans. When you purchase the home if you wish us to also include materials for finishing the second floor in accordance with our suggestion, we will be glad to do so for \$95 additional. The small sketch over the plan arrangement suggested for the second floor, will inform you of the ceiling height obtainable.

The price of the Marigold in Single Construction, specifications for which are listed below, is \$825. In Double Construction the price is \$945 and the specifications are the same as in single construction except that the following materials are added: Sub-flooring for first floor only with building paper to be placed between the sub-flooring and finish flooring, outside wall sheathing under bevel siding with building paper between, sash weights, cord, pulleys and locks for all double sliding windows and additional nails for extra materials. Whether you purchase in Single Construction or Double Construction, materials with which to finish the second floor in accordance with our suggestion can be furnished for \$65 additional. Purch shown in picture may be had by adding \$125. Size of Porch 20'x8'.

ALADDIN'S \$100,000.00 GUARANTY FUND

THE FIRST NATIONAL BANK
 200 1/2
 111 Broadway, New York City
 111 Broadway, New York City

THE FIRST NATIONAL BANK
 MEMBER OF FEDERAL RESERVE SYSTEM

Buy Over 7000.
 September 27, 1934.

To ALADDIN Customers:

One Hundred Thousand dollars has been deposited with us by the Aladdin Company. This is held by us as a guaranty and safeguard to protect you as follows: This bank will pay back to you any and all money you send to the Aladdin Company if you find upon arrival of your shipment that the materials are not exactly as represented. It is understood that you will notify this bank within two days after arrival of materials at your station, and at the same time notify the Aladdin Company, if you desire to have your money returned.

This One Hundred Thousand Dollars guaranty fund is deposited with us under this arrangement until January First Nineteen Hundred Twenty Six, unless further renewed on that date.

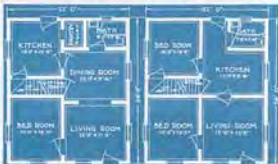
FIRST NATIONAL BANK.
 THE TRUSTS COMPANY OF N.Y.

Specifications for Marigold (Single Construction.) Size 22'x26'. 6x6 inch built up sill. 2x8 inch joists on 16 inch centers first floor, 2x6 joist on 16 inch centers second floor. Clear 2 1/4 inch face tongued and grooved flooring first and second floors. 2x4 inch wall and partition studding on 16 inch centers. Lath for lining all walls and ceilings on first floor. Clear A redwood bevel siding for outside walls. Clear outside finish, 2x4 inch rafters on 24 inch centers. Roof sheathing laid tight. Best quality green slate surfaced roofing. Check rail windows and frames, size of glass in each sash 26x24 inches, sash glazed ready to hang. Kitchen supplied with check rail window, size of glass in each sash 26x16 inches. Bath room has swinging casement window, glass size 18x24 inches. Clear interior trim. Clear 6 inch two member baseboard of attractive design. Door frames and doors, size 2' 1/2" x 8 inches by 6 ft. 8 inches, highest quality fir. Front and rear doors glazed upper half. Stairs to second floor and cellar furnished. Two coats of paint for exterior. Stain and varnish for interior trim and doors. All nails, mortised locksets, hinges, double acting floor hinges and spring window bolts to complete house. Height of ceiling 8 feet first floor. Roof 1/4 pitch. Exposed eaves 1 foot projection.



Suggested Second Floor Plan

First Floor—Plan A First Floor—Plan B





This is one of the most popular homes ever designed. It contains every modern convenience and is ideal in appearance, arrangement and comfort.

THE CHARM of the Dutch Colonial never fades. The early Dutch settlers along the coast of New England developed this type with its gambrel roof, and broken roof lines. Aladdin designers have held true to this inspiration while actually giving full dimensions to the second floor in height, breadth and depth. No space is lost, ceiling being full bright and square, yet the observer on the street gains the impression of a true gambrel type. Note the protected entrance, columned and inset—a true Colonial approach.

Examine minutely the placement of the rooms. Can you conceive a higher degree of perfection? The entrance hall with semi-open stairway and cloak closet demand your admiration the minute you enter. Arches lead to the right and left into living room and dining room. Think of the possibilities of a living room 26 feet deep and 14 feet wide! Leading from this interesting room is a library or den. On the other side of the house is found pantry separating dining room and kitchen, with cellar entrance under the main stairway. There are six rooms on the second floor—and closets. It may be called a twelve-room home, and at a price that is unapproachable through any other source. The Capitol is priced in single construction at \$1775. The price in double construction is \$2065 and the specifications are the same as for single construction except that the following materials are added: Sub-floor sheathing under finish floors with building paper between; outside wall sheathing under bevel siding with building paper between and extra nails for all additional materials. Pergola porch, size 8x14 feet, will be furnished by your adding \$69 to the price. If you want the 10x14 foot Porte Cochere shown on right side of house add \$56 to price.



Living Room—The Capitol

Specifications Capitol—(Single Construction.) Size 36x26, 6x8 in. built-up sills, 2x8 in. joists on 16 in. centers 1st and 2nd floors. Clear 2 1/4 in. face tongued and grooved flooring, 2x4 inch wall and partition studs on 16 inch centers. Lath for lining all walls and ceilings. Clear A 16 inch centers. 2x4 inch ceiling joists on 16 inch centers. 2x6 inch rafters on 24 inch centers. Roof sheathing laid tight. Best quality green slate surfaced roofing. Check rail windows and frames size of glass in each sash 26x28 inches, 1st floor; 26x24 inches 2nd floor. Sash glazed ready to hang. Bath room and kitchen supplied with check-rail window, size of glass in each sash 26x16 inches. Clear interior trim. Clear 6 inch two member baseboard. Door frame and doors size 2 feet 8 inches by 6 feet 8 inches, high quality fir. Front, rear and side doors upper half glazed. Attractive, circle tread stairs as shown on plan. Cellar stairs under main stairs. Door frame and casing arbors furnished where shown in plans. Two coats of paint for exterior. Stain and varnish for interior trim and doors. All nails, mortised locksets, hinges and double acting door hinges, sash weights, sash cord, sash pulleys and sash lugs to complete house. Height of ceilings 9 feet 1st floor, 8 feet 2nd floor. Ceilings on 2nd floor are full height not sloped. Roof 1/2 pitch. Boxed eaves, 1 foot projection.

First Floor Plan—The Capitol

Second Floor Plan—The Capitol





ASTRONG, substantial, dignified and complete American home! This might be described in one sentence, the splendid Liberty. To avoid the wasting of a single penny, is a duty we all owe to our families and ourselves. To accomplish this object in the building of a home is the most laudable of all ambitions. Aladdin designers set about the task of creating a structure in which there would not be wasted one foot of material—one inch of space. Waste material, or waste space, means wasted dollars for the owner.

Examine minutely every feature of the Liberty. Clean square lines, well proportioned walls and roof, regular placement of windows, blend into perfect harmony. It pleases the eye at first impression, as well as under more continued study. Two interior arrangements are offered at the same price, one showing three bedrooms and one with four bedrooms. The Liberty is priced at \$998 for single construction, specifications for which are shown at bottom of page, and the price for double construction is \$1165. Double construction specifications are the same as for single construction except that the following materials are added: Sub-floor sheathing under finished floors with building paper to be placed between the two floors, outside wall sheathing under bevel siding with building paper to be placed between, sash weights, cord, pulleys and sash locks for all double sliding windows, and additional nails for the above extra materials. Porch size 16x8 foot will be furnished by your adding \$115 to the price.

The Liberty—Plan J

Plan J affords gratification to the careful and discerning observer because it illustrates a perfect example of avoidance of waste space. No unnecessary angles or projections are discoverable in the partitions dividing the rooms. Handsome semi-open staircase leads from generous living room to second floor, where are found three bedrooms, bath and splendid closets. Fanny and rear porch are valuable features of the first floor.



First Floor Plan J

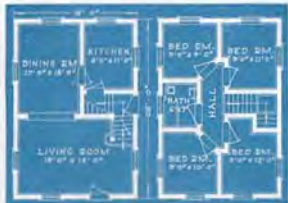
Second Floor Plan J

SPECIFICATIONS

(Single Construction.) 4x4 inch built-up sill. 2x8 inch joists on 16 inch centers 1st and 2nd floor. Clear 2 1/2 inch face, tongue and groove flooring. 2x4 inch wall and partition studs on 16 inch centers. 2x4 inch rafters on 24 inch centers. Lath for lining all walls and ceilings. Clear 2 1/2 inch outside sash weights. Clear outside brass 2x4 inch casing joints on 16 inch centers. 2x4 inch gutters on 24 inch centers. Elliptical sash. 2x8 inch. Sash sheathing laid tight. One quarter green glass (tinted) roofing. One-half inch windows and doors sash of glass in each case. 3/4 inch doors 1st floor. 2x4x12 inch 2nd floor. Beveled glass each with 2x4x12 inch. Clear interior trim. Clear 2 inch zinc-plated hardware. Door frames and sash sash 2 feet 3 inches by 4 feet 6 inches, highest quality Br. Wood and top doors brass half-glazed. Brass knobs. Attractive Coria brass main stairs. Clear white pine stairs. Two sets of solid for entrance, stairs and porch for interior trim and sash. All walls, ceilings, baseboards, doors, double acting floor joists and ceiling windows built to stronger lines. Sill of house to be 2x8 inch. Sill of porch to be 2x8 inch. Downspout 1 1/2 inch 1/2 inch.

The Liberty—Plan K

For those whose necessities require four bedrooms, the Liberty Plan K has been devised by our designers. Think of 4! Living room, dining room, kitchen, bath and four bedrooms, all included in a house of the dimensions of the Liberty, and more remarkable still, at the price of \$998. This home is big enough for a family of eight and offers all modern conveniences.



First Floor Plan K

Second Floor Plan K

The Mayflower

5 Plans—Price \$389

WE PAY THE FREIGHT

Happiness is a state of mind! Good old fashioned common sense tells us that we can be happiest in a home that is well within our means—that we can afford. The Mayflower brings this happiness to thousands of families, whose savings and income are limited. It permits the family of modest means to get into a snug, warm and strong little home at almost unbelievable little cost. Five plans of interior arrangement are offered for your choice. This little home is being put up by many owners who have had no experience in carpenter work. Our instructions, with pictures, explain every step. The price in single construction is \$389, specifications for which are shown to the left. The price in double construction is \$465, with the same specifications except that the following materials are added: Sub-floor sheathing under finished floor with building paper to be placed between the two floors, outside wall sheathing under finished siding with building paper to be placed between, sash weights, cord, pulleys and sash locks for all double sliding windows and additional nails for the above extra materials. Porch as shown sets 14 feet by 6 feet will be furnished by your siding \$47 to the price.



Specifications Mayflower (Single construction.) Size 18x18 feet. 4x6 inch built-up sill. 2x6 inch wall and partition joists on 24 inch centers. Clear 2 1/2 inch face tongue and grooved flooring; 2x4 inch lath for lining all walls and ceilings. Clear A reworked bevel siding for outside walls. Clear outside finish. 2x4 inch ceiling joists on 16 inch centers. 2x4 inch rafters on 24 inch centers. Roof sheathing laid tight. Best quality green slate surfaced roofing. Chalk-rail windows and frames size of glass in each sash 26x24 inches, sash glazed ready to hang. Kitchen, size of glass in each sash 26x16 inches. Clear interior trim. Clear 6 inch two member baseboard. Door frames and doors size 2 feet 8 inches by 6 feet 8 inches, highest quality fir. Front and rear doors upper half glazed. Cellular stairs furnished where shown on plans. Two coats of paint for exterior. Stain and varnish for interior trim and doors. All nails, mortised locksets, hinges, door and rear doors upper half glazed. Spring window bolts to complete house. Size of house 18x18 feet. Height of ceilings 8 feet. Roof 3/4 pitch. Exposed eaves 1 foot projection.



Mayflower No. 1

Mayflower No. 2

Mayflower No. 3

Mayflower No. 4

Mayflower No. 5

EXTRA FEATURES OBTAINABLE FOR ALADDIN HOUSES

For those Customers who wish to embellish their homes with a few distinctive touches, we have provided a number of features, as shown here at but slight additional costs.

FOUNDATION POSTS

We can furnish, with your house shipment, foundation posts 9 feet long at \$1.00 per post.

GREEN SLATE SURFACED SHINGLES

We can furnish green slate surfaced shingles instead of the same colored roofing specified on the various forms at the following additional charges:

Marginal	\$32.00	Shingles	\$44.00
Caps	\$8.00	Capitol	\$2.00
Liberty	\$2.00	Plym	40.00
Colony	\$2.00	Ford 1st 1/2	8.00
Victory	\$2.00	Ford 1st 1/2	12.00
Mayflower	20.00	Stutela	18.00
Adams	30.00	Lions	24.00
Putnam	32.00		

They are made of the same high grade materials as the roofs. The size of each shingle is 3 inches wide by 12 1/2 inches long. They lay 4 inches to the weather, thereby giving you better than three thickness on your roof. We can recommend them in every way to give perfect satisfaction.

CELLAR WINDOWS

For wall opening 3 feet wide by 2 feet high, complete with frame, glazed sash and hardware.

For wall opening 2 feet wide by 2 feet 8 inches high, complete with frame, glazed sash and hardware.

It is not necessary to forward the cellar frame before the house is shipped, by leaving the wall openings described above, the frames can be set in place the foundation has been erected.

SPECIAL DOORS

Here we show two types of front doors, either one of which may be substituted at an additional charge of \$4.00, for the glazed doors shown and regularly furnished in the various designs.

The No. 14 door, which is 2'9" x 6'8" in size, can also be furnished in pairs for the arch openings shown in the various designs at \$21.50 per pair. The price not only includes the doors but also the astragal for between the floors, lock set, two pairs of bolts, top and bottom bolt, and stain and varnish. When ordering special doors please specify on your order the style number of the door you desire.



GRADE CELLAR ENTRANCE NO. 2

This addition size 7 feet x 6 feet is designed to afford a grade cellar entrance and can be attached to any Aladdin house. All material necessary for the complete entrance is included together with steps to kitchen and steps to basement. Price of this addition in single construction \$78, double construction \$78.



HOMECRAFT BOOKCASE ARCH

Has been used in thousands of homes and in every case has given perfect satisfaction. The plans are 2 1/2 feet wide, the columns 8 inches square. Set in place with hardware and glass doors, as shown. Homecraft Arch, JC-6—\$69.00.



Quality Fixtures at Wholesale Prices



Sovereign Cabinet

This new Sovereign Kitchen Cabinet is a 7 ft. 6 in. kitchen cabinet with a sink and stove. It is made of heavy oak and is finished with a beautiful mahogany stain. It has a built-in sink and stove and is finished with a beautiful mahogany stain. It has a built-in sink and stove and is finished with a beautiful mahogany stain. It has a built-in sink and stove and is finished with a beautiful mahogany stain.

7 ft. 6 in. Cabinet, white oak with mahogany finish and sink and stove.....**\$19.30**
 7 ft. 6 in. Cabinet, white oak with mahogany finish and sink and stove.....**\$21.50**

\$3.00 for this Medicine Chest



We mention this the more because it is a Medicine Chest of the highest quality. It is made of heavy oak and is finished with a beautiful mahogany stain. It has a built-in sink and stove and is finished with a beautiful mahogany stain. It has a built-in sink and stove and is finished with a beautiful mahogany stain.

Medicine Chest.....**\$3.00**

Aladdin Cabinet



We are offering a Cabinet of this size at the lowest price in the city. It is made of heavy oak and is finished with a beautiful mahogany stain. It has a built-in sink and stove and is finished with a beautiful mahogany stain. It has a built-in sink and stove and is finished with a beautiful mahogany stain.

Aladdin Cabinet.....**\$16.00**

NOTICE — All Prices on this Page Are F. O. B. Factory and Subject to Revision April 1st, July 1st and Sept. 1st.



Bath Tub
 White porcelain enamel lined and finished either 3 feet or 4 1/2 feet long as desired. It is 30 inches wide and 17 inches deep. Has 1 inch oil rim and measures 22 1/2 inches from floor to rim. Fitted with special valves, waste and supply as shown, double hot-cold, stopper and chain.
 No. 27-162.....**\$33.65**



Closet
 Has copper line. Only rack. Bowl is vitreous porcelain of highest standard. Comes complete with special elbow, supply pipe and waxwork.
 No. 27-163.....**\$30.25**



Kitchen Sink
 Our 18 1/2 inch one-piece cast steel with roll rim. Laminated in pure white porcelain. Highly polished. Supplied on standard legs. Complete with nickel plated fittings as shown.
 No. 27-164.....**\$15.90**
 Extra for trim to floor.....**.30**



Lavatory
 A 12 1/2 inch white porcelain lavatory fitted with special valves. Complete with nickel plated fittings as shown.
 No. 27-172.....**\$12.50**
 Extra for trim to floor.....**.30**



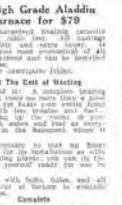
Range Boiler
 Our 12 inch galvanized range boiler. Complete with nickel plated fittings as shown.
 No. 27-173.....**\$14.25**
 Extra for trim to floor.....**.30**



Bid Water Fixture
 Complete in polished nickel with bid water fixture. No. 27-1112.....**\$11.12**
Nickel Fixture
 Complete with bid water fixture. No. 27-1113.....**\$11.13**
Bid Water Fixture
 Complete in polished nickel with bid water fixture. No. 27-1114.....**\$11.14**
Bid Water Fixture
 Complete in polished nickel with bid water fixture. No. 27-1115.....**\$11.15**
Bid Water Fixture
 Complete in polished nickel with bid water fixture. No. 27-1116.....**\$11.16**
Bid Water Fixture
 Complete in polished nickel with bid water fixture. No. 27-1117.....**\$11.17**
Bid Water Fixture
 Complete in polished nickel with bid water fixture. No. 27-1118.....**\$11.18**
Bid Water Fixture
 Complete in polished nickel with bid water fixture. No. 27-1119.....**\$11.19**
Bid Water Fixture
 Complete in polished nickel with bid water fixture. No. 27-1120.....**\$11.20**



Complete Outfit Includes:
 Bid Water Fixture.....**\$11.12**
 Bid Water Fixture.....**\$11.13**
 Bid Water Fixture.....**\$11.14**
 Bid Water Fixture.....**\$11.15**
 Bid Water Fixture.....**\$11.16**
 Bid Water Fixture.....**\$11.17**
 Bid Water Fixture.....**\$11.18**
 Bid Water Fixture.....**\$11.19**
 Bid Water Fixture.....**\$11.20**



A High Grade Aladdin Furnace for \$79
 Has guaranteed heating capacity of 12,000 cubic feet. All castings are made in our own foundry. It is finished and most economical of all heating systems and can be installed in 24 hours.
 No. 27-174.....**\$79.00**



Complete Outfit Includes:
 Bid Water Fixture.....**\$11.12**
 Bid Water Fixture.....**\$11.13**
 Bid Water Fixture.....**\$11.14**
 Bid Water Fixture.....**\$11.15**
 Bid Water Fixture.....**\$11.16**
 Bid Water Fixture.....**\$11.17**
 Bid Water Fixture.....**\$11.18**
 Bid Water Fixture.....**\$11.19**
 Bid Water Fixture.....**\$11.20**

PRICES FOR HEATING AND ELECTRIC WIRING

Home	Wiring	Aladdin Furnace	Hot Air Pipe System	Home	Wiring	Aladdin Furnace	Hot Air Pipe System
Bluebird No. 1	\$21.65	\$79.00 (37-116)	\$120.35	Victory A	\$20.50	\$79.00 (37-118)	\$111.90
Bluebird No. 2	21.10	79.00 (37-118)	121.40	Victory B	18.15	79.00 (37-118)	125.40
Bluebird No. 3	19.40	79.00 (37-118)	120.15	Victory C	16.90	79.00 (37-118)	126.20
Bluebird No. 4	15.80	79.00 (37-116)	105.00	Victory D	19.70	79.00 (37-118)	126.50
Columbia No. 1	15.80	79.00 (37-118)	105.00	Victory E	22.00	79.00 (37-118)	128.10
Columbia No. 2	16.25	79.00 (37-118)	108.90	Victory X	20.35	79.00 (37-118)	128.75
Columbia No. 3	16.00	79.00 (37-118)	106.40	Victory Y	21.45	79.00 (37-118)	132.60
Columbia No. 4	17.05	79.00 (37-118)	107.65	Margaret A	23.20	79.00 (37-118)	144.50
Columbia No. 5	17.05	79.00 (37-118)	106.40	Margaret B	21.85	79.00 (37-118)	144.50
Columbia No. 6	18.00	79.00 (37-118)	106.40	Margaret C	26.85	79.00 (37-118)	169.20
Columbia No. 7	16.00	79.00 (37-118)	106.00	Liberty	38.20	79.00 (37-118)	239.10
Columbia No. 8	16.00	79.00 (37-118)	106.00	Liberty	28.70	79.00 (37-118)	153.50
Columbia No. 9	16.70	79.00 (37-118)	106.75	Liberty B	28.05	79.00 (37-118)	159.50
Columbia No. 10	15.80	79.00 (37-116)	106.50	Mayflower No. 1	15.30	79.00 (37-118)	96.75
Columbia No. 11	19.45	79.00 (37-118)	114.20	Mayflower No. 2	13.30	79.00 (37-118)	96.75
Columbia No. 12	16.45	79.00 (37-118)	106.45	Mayflower No. 3	15.30	79.00 (37-118)	96.75
Columbia No. 13	17.60	79.00 (37-118)	108.25	Mayflower No. 4	15.30	79.00 (37-118)	96.75
Columbia No. 14	20.50	79.00 (37-118)	118.75	Mayflower No. 5	15.05	79.00 (37-118)	96.75
Columbia No. 15	18.15	79.00 (37-118)	116.50	Adams No. 1	26.05	79.00 (37-118)	169.20
Columbia No. 16	21.15	79.00 (37-118)	118.75	Adams No. 2	26.85	79.00 (37-118)	177.15

The Aladdin Plan

THE Aladdin Plan of home building has been in successful operation for nineteen years.

The whole purpose of the plan is to help builders of modest homes.

Its first object and principal benefit, is to save money for builders of modest homes.

The Aladdin Plan has saved \$100, \$300, \$500, \$800—\$1500 and even more money on the individual homes of thousands of home builders.

Our home builder customers write us after finishing their homes and tell us these things.

They tell us how we helped them to buy their materials (or less than their local lumber dealer would sell them).

They tell us how much better our lumber is than they could get from their local dealers.

They tell us how strong their homes are, how warm they are, how convenient the room arrangements are, and how pretty they look when finished.



HOME OFFICES OF THE ALADDIN COMPANY



How ALADDIN Saves You Money

Now let us tell you how we save you money.

The read-cut plan avoids wasting lumber when building—saves about \$18.00 out of every \$100.00 worth of lumber ordinarily used in building your home.

Nine-tenths of all lumber coming out of the forests are in 8-foot, 10-foot, 12-foot, 14-foot and 16-foot lengths. When you want to use other lengths you have to pay more money for the same quantity and quality. Aladdin design loves to use standard lengths. That's the economy of standard parts and that's the same kind of manufacturing economy that enables automobiles to be manufactured so cheaply. And that is what enables us to put in higher quality at lower prices.

Rapid, automatic machinery handles this lumber so swiftly, so accurately and so perfectly, that one man at a machine in our mills will cut as much as nearly a hundred carpenters can in the same length of time. And you get the benefit of this saving.

The Aladdin system of cutting the lumber in the mill saves about \$30.00 out of every \$100.00 worth of carpenter labor—as against the old system of measure, try, cut and fit on the job.

Twenty Feet of Lumber from a Sixteen-Foot Board

Think of taking a six-inch board sixteen feet long and getting twenty feet of six-inch board out of it!

Think of applying this system of saving throughout all the lumber used in building your home!

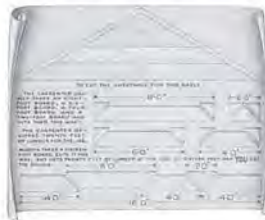
Think of your own good money it saves! Think of your money this system saves, for the board is priced to you in exactly the number of feet of lumber going into it.

To eliminate waste by scientific planning, designing and cutting of lumber is to save your money from the waste pile.

W. J. Sovereign, president of The Aladdin Company, conceived

this tremendous thought, originated, perfected, and established the system.

The principle has been so thoroughly established through the success of The Aladdin Company that it is now accepted and approved by lumbermen, contractors, engineers and scientists.



The Aladdin Company

And these customers of ours tell us how pleased they are with all their dealings with us.

And, really, we are most pleased when they say this, for the Aladdin people are human. We are just ordinary people whose life work, life experiences are devoted to home building, devoted to making home building simpler, more economical, easier and more pleasant for our customers.

Every stockholder in The Aladdin Company is a worker in the company. We are all interested in every customer and we are all interested in knowing that every customer is satisfied.

Aladdin Homes are the original and first ever sold where the materials were all prepared in the mill, cut to fit and ready to be nailed in place when the house is being built. The read-cut house industry was founded by Aladdin—by W. J. and O. E. Sovereign and the present workers, in The Aladdin Company.

The ALADDIN Guaranty

Satisfied, or your money back, is the soundest guaranty ever written. When this guaranty is backed by a company whose assets run into the millions you are assured of absolute safety in all your dealings. The Aladdin Company guarantees your satisfaction or your money back in every transaction with us.

Build It Yourself

We usually advise our customers to have a carpenter, if possible, but we say that any sensible man can build an Aladdin home if he follows our simple plain instructions and detailed blueprints of erection.

Every piece of material is cut to fit, with a few exceptions. And these pieces are marked and numbered so that you know just where every piece goes when you look at the pictures and photographs we supply.

Of course if you build your own home, like so many other Aladdin customers have, you, too, will save money; you would have to pay a carpenter.

"It's just common horse sense," wrote a customer, after he had moved into his new Aladdin. This man was so proud because he built his Aladdin himself—and he was not a carpenter either.

Avoid Profits of the Middleman

The Aladdin Company buys immense quantities of lumber from the forests, getting absolutely the lowest prices. You therefore buy direct, without any middlemen to add their profit to the price of your lumber, millwork and hardware.

If any wonder our customers write us and tell us they saved \$300, \$500, \$800 and more, when we are able to avoid all these wastes that exist for the person who builds the old way?

For years many great corporations have been buying and building Aladdin homes for their employees. The United States Government and many states and cities have been our customers. These facts all prove that there is economy and satisfaction for our customers.

This Catalogue Our Only Salesman

With this catalogue you are able to keep the profits in your own pocket! You can't get off through dealers, they can't add their several hundred dollar profits to the goods you buy from us. You have this money yours.

When your dealer says "Don't buy your lumber out of town," ask him when he buys the lumber he wants to sell you.

You see he buys his lumber out here and the only money that stays in your town is the dealer's profit. Wouldn't you rather have it in your pocket than in his?

This catalogue makes possible this saving—and many others.

ALADDIN Homes Not Portable

It is built, it is designed, constructed and built just like the best architect-designed, contractor-built houses in your neighborhood. Aladdin homes are sturdy, warm and strong—real year-round homes. They have been built and lived in by many in Maine, North Dakota, Michigan, Canada—and in Alaska. The President, the General Manager, and most of the executives of The Aladdin Company have been living in Aladdin homes for years.

Aladdin Homes are designed to use standard lengths of lumber cut from standard lengths of logs as they come out of the forest. This saves waste of lumber; saves the \$18.00 out of every \$100.00 we speak of before.



Summer Cottages A separate booklet is ready to be mailed to you, if you are interested in summer cottages. Aladdin Summer Cottages are single walled, exposed studding, single matched ceiling partitions, with rooms open to the rafters.



How Lumber is Cut to Fit

The illustration at the left demonstrates the great saving and the simple work erecting an Aladdin home. The material is cut to fit in saw mills and numbered according to the blueprints which explain every step of the erection. The pieces fit together perfectly. And you save at least 15% waste lumber besides 30% to 40% of the labor of erection. Aladdin is the originator of the Raad-Cut System of construction and has saved thousands of home builders from \$300 to \$800 on their houses.

Sturdy, Honest Lumber Makes Sturdy, Honest Homes

Early in its history, The Aladdin Company started to improve the quality of lumber that had been the custom in put into modest homes. It started to furnish beautiful, clear lumber for the doors and interior woodwork. And ever since it has devoted its efforts to improving its beliefs that the modern home should have as good quality as the highest homes. The beautiful, velvet-grained Oregon fir and yellow pine used in Aladdin homes is the finest coming out of the forests. It takes the handiest stain, silt and varnish and holds the coloring permanently.

The points furnished are standard high quality—the beautiful finished lath and wire and galvanized finish off the woodwork attractively. Our roofing is made by one of the largest companies in the country and is of the highest quality. Pleasure and pride can't help but come to you when you know how good a home you have built, and especially when you have secured all these good things and saved a lot of money too.

Some people will tell you not to build an Aladdin home. But most of them will be people who will see some profit they expected to make out of you if you do. They will be people who want to sell you something, who will want to get your money. They will never be people who have built Aladdin homes.

ALADDIN Customers If you want to ask advice, it is only fair to yourself, and fair to us, to ask people who know about Aladdin homes. Can a man who hasn't built an Aladdin house know as much about it, or about us, as a man who has dealt with us? We will give you the names and addresses of many customers to write to, or call on. We wouldn't do that if we didn't know they saved money, would we? All right then, if a dealer or a contractor tells you not to build an Aladdin house, ask him for his reasons and investigate these reasons by talking with a man who has built an Aladdin house. Don't take anybody's advice, who has not actually built an Aladdin home. Get your facts from people who know.

Nineteen Years of Experience The houses shown in this book are the best we have planned in our nineteen years' experience. We have learned from furnishing homes for thousands of families, enough to make a city of a quarter of a million population. Early on we have many different floor plan arrangements to suit your family and your tastes. We have designed these houses and priced them so that you can get into a home at the lowest possible cost, or you can have added values like porches, kitchen cabinets and other luxuries and necessities. You can buy as much or as little as you like. We want to satisfy you exactly.

Shingled Walls Shingled walls cannot be finished for slight extra cost. At the double construction price we will furnish and shingle the walls by the use of siding, without additional charge, which includes all other features called for in finish construction.

Stucco Walls Shingling and lath for stucco also walls will be furnished instead of shingling but the extra work, without additional charge.

Painting You require paint for painting the outside, two coats and water inside. We will furnish and apply the paint, and will do all lead painting, light or dark oak stain and varnish or any other finish you desire. These materials are standard high quality and make a beautifully finished job.



From the Pyramids to the Woolworth Building

To him who says the Raad-Cut System is not possible or practical, point to the Pyramids of Egypt, refer to Solomon's Temple as described in the Bible, or inspect Washington Monument, or the 57-story Woolworth Building in New York City. You will find that each was prepared, erected and completed by the Raad-Cut system. But remained for The Aladdin Company to first apply the system to your benefit in the building of a home. And thousands of American families scattered over this broad land will testify to its economy and practical success.

The pyramids aren't portable, the Woolworth Building is not portable, nor are Aladdin homes portable.

If you attempt to tear apart, or dismantle an Aladdin home, the most expert contractor could not tell it from any first-class frame dwelling because there is no difference.

Masonry Chimneys and Fire Places

Chimneys can be located anywhere in the house you like, for we do not cut the masonry for these openings. If you do not want the fireplace which may be shown in the photograph, you need not build it. Of course, any excavation work, and the foundation work must be done on the ground. Brick, stone and cement can be had in your locality as cheaply as we could furnish it. We furnish you a foundation plan to tell you how to proceed to build the kind of foundation you want.

Blue Prints

Complete blue prints showing every step of erection are furnished with every order so that even though you may not be a carpenter, you will know just how to erect your home. Any of these houses will be erected without additional charge. The opening for fireplaces shown in some of the photographs is not cut so that the chimney may be omitted, or its location changed from where it is shown in the picture.

Freight Exception

We pay the railroad freight on all our houses in all states, except the following: Texas, Louisiana, Oklahoma, New Mexico, Arkansas, Arizona, Nebraska, Colorado and Kansas. Write us for freight quotations on shipments to above states.

Terms and References

Aladdin homes are sold for cash only. We require the full price of the home to be sent with the order to obtain the prices quoted. However, you may be able to make your own terms, but we are not responsible of the price, such the order and pay the balance upon the arrival of the shipment, or will accept your order on time basis, providing you send the price quoted to pay for expenses of shipping the home in full cash.

NOTE—This listing supersedes all previous catalogs, and all prices herein quoted are subject to revision April 1st, 1922, July 1st, 1922, and September 1st, 1922.

References

Any bank in the United States, Banker's or Don's commercial interests, National City Bank of New York with branches in all principal cities; First National Bank, Bay City; The Merchants National Bank, Wilmington, North Carolina; Northwestern National Bank, Portland, Oregon; First National Bank, Hattiesburg, Mississippi; or any city official or citizen of Bay City and our customers.

THE ALADDIN COMPANY

General Offices and Mill:
BAY CITY, MICHIGAN
 Branch Offices and Mill:
 Wilmington, N. C.
 Portland, Oregon
 Everett, Wash.
 White Mountain, N.H.

Copyright 1924
 BY THE ALADDIN CO.
 111-1127, 1924

Code Address
 "ALADDIN"
 N. C. Code

The Adams—A Typical American Home—Price \$1135. We Pay the Freight



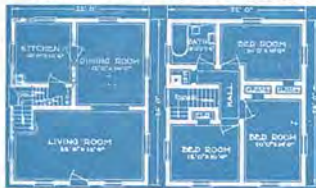
THE Adams is an American home of chaste simplicity. Straight architectural lines create a pleasing and substantial style of home, which fulfills the ideals of those home builders who rather invest their money in conveniences than embellishments. Note the exposed rafters, shingled gable and belt at second story. A spacious living room with semi-open stairway, well proportioned dining room and model kitchen with grade cellar entrance, complete the first story. The second story has three excellent bedrooms, four closets and bath. We show an optional second story which incorporates four bedrooms; either may be had at the same price. The price in single construction is \$1135 as per specifications below. The price in double construction is \$1330, with specifications same as above except the following materials are added: Sub-floor sheathing under finished floor with building paper to be placed between sash weights and building paper to be placed between, sash weights, cord, pulleys and sash locks for all double sliding windows and additional nails for the above extra material. The porch size 10x6 will be shipped if you will add \$108 to price.

construction is \$1135 as per specifications below. The price in double construction is \$1330, with specifications same as above except the following materials are added: Sub-floor sheathing under finished floor with building paper to be placed between sash weights and building paper to be placed between, sash weights, cord, pulleys and sash locks for all double sliding windows and additional nails for the above extra material. The porch size 10x6 will be shipped if you will add \$108 to price.

Specifications, The Adams (Single construction.) Size 22x26. 6x6 built up sill; 2x6 inch joists on 16 inch centers 1st and 2nd floors. Clear 2 1/2 inch baseboard, 2x4 inch wall and partition studing on 16 inch centers. 2x4 inch wall and partition studing on 16 inch centers. Best shoring laid tight. Best quality green date surfaced roofing. Check rail windows and frames, size of glass in each sash 26x28 inches 1st floor, 26x24 2nd floor. Sash glazed ready to hang. Kitchen and bath room supplied with check rail window, size of glass in each sash 26x16 inches. Clear interior trim. Clear 6 inch two member baseboard. Door frames and doors size 2 feet 8 inches by 4 feet 8 inches, highest quality fir. Front and rear doors upper half glazed. Cased arch finished where shown in plans. Attractive circle tread stairs as shown on plans. Grade entrance cellar stairs under main stairs. Two coats of paint for exterior. Stain and varnish for interior trim and doors. All nails, mortised locksets, hinges, double acting floor hinges and spring window bolts in complete house. Height of ceiling 9 feet 1st floor—8 feet 2nd floor. Roof 1/2 pitch. Exposed rafters 1 foot projection.

First Floor Plan

Second Floor Plan No. 1



Second Floor Plan No. 2



Garages as Low as \$89

The three Aladdin garages shown below cover the demand for 95 per cent of all garages built. Aladdin garages are staunchly built of sound materials. Lumber is all cut to fit. A couple of days' time will erect and finish one. Prices quoted are astonishingly low and include freight paid to your railroad station.

The Ford—Size 8x14 ft. or 10x16 ft.

The Ford illustrated below is made in two standard sizes. The 8x14 size being the smallest and will admit a Ford touring car with top strung up to down. Size 8x14 still complete for \$89. Size 10x16 is priced at \$112. Price freight paid. This will admit a car of 116 inch wheel base.

Studebaker—Size, 12x20 ft.

The Studebaker will take the largest car on the market with ample room at sides for storage and working. It has swinging doors. Always make good when erected. Paint to match your house. The Studebaker price is \$156, freight paid.



The Lincoln—Size, 20x20 ft.

Distinctive and attractive, the Lincoln size 20x20 two car garage will do credit to any surrounding. It is strong, substantial and built of best materials. Four swinging doors are provided. Price \$238, freight paid.



Specifications as follows: Sills 4"x6"; Studing, 3"x6", 2"x6" centers; Deep siding for side walls; Rafters 2"x4", 2"x4" on centers; Roof one-quarter pitch. Exposed Fives, 1 foot projection. Roof Sheathing, laid tight. Best quality green slate surfaced roofing top roof. Hardware, nails and paint for two coats on exterior. Materials well-cut and complete blue prints showing every step of erection. All garages shown are furnished without doors, so practically all sizes users prefer to build four of concrete or cinders.

Offices and Mills, Bay City, Michigan,
Wilmington, N. Car., Portland, Ore., Toronto, Ont.

THE ALADDIN COMPANY