

Aladdin Homes

We Pay the Freight

"Sold By The Golden Rule"

No. 37

The ALADDIN COMPANY through this catalog offers you an opportunity to buy a complete home direct from the manufacturers, saving four profits on the lumber, millwork, hardware and labor.

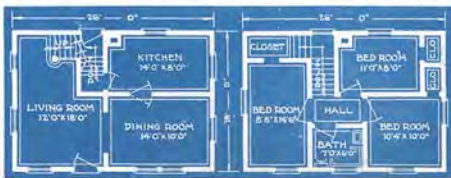


The Emerald—Six Rooms and Bath—Price \$956 And We Pay The Freight

A LITTLE gem, designed to gladden the hearts of the whole family, is pictured here—The Emerald. It is astonishing to find so complete a home, in such small compass—AND, as naturally follows—so low a price. Note the space saving arrangement of living room, dining room and kitchen—with the grade cellar entrance. They are excellently proportioned. On the second floor is revealed three fine bedrooms, each with closet, a well located bathroom and all reached from the central hall. The Emerald can be built the narrow way to the front of your lot, if desired.

The Emerald is priced at \$956 for single construction, specifications for which are shown at bottom of page, and the price for double construction is \$1099. Double construction specifications are the same as for single construction except that the following materials are added: Sub-floor sheathing under finished floors with building paper to be placed between the two floors, outside wall sheathing under bevel siding with building paper to be placed between, sash weights, cord, pulleys and sash locks for all double sliding windows, and additional nails for the above extra materials. Porch size, 12x8 feet, will be furnished by your adding \$75 to the price. We pay the freight.

Specifications, The Emerald: (Single Construction) Size 26x18. 6x6 built-up sill; 2x8 inch joists on 16 inch centers 1st and 2nd floors. Clear 2 1/2 inch face torped and grooved flooring, 2x4 inch studs for lining all walls and ceilings. Clear A redwood bevel siding for outside walls. Clear outside finish. 2x4 inch ceiling joists. 2x4 inch rafters on 24 inch centers. Roof sheathing laid tight. Best quality green slate surfaced roofing. Check rail windows and frames size of glass in each sash 26x28 inches 1st floor, 26x24 2nd floor. Sash glazed ready to hang. Clear interior trim. Clear 6 inch two member baseboard. Door frames and doors size 2 feet 8 inches by 6 feet 8 inches, highest quality fir. Front and rear doors upper half glazed. Cased openings furnished where shown in plans. Attractive circle tread stairs as shown on plans. Grade entrance cellar stairs under main stairs. Two coats of paint for exterior. Stain and varnish for interior trim and doors. All nails, mortised locksets, hinges, double acting floor hinges and spring window beds to complete house. Height of ceiling 9 feet 1st floor—8 feet 2nd floor, sloping to 6 foot 6 inches at front and rear walls. Roof 1/2 pitch. Exposed eaves 1 foot projection. Plans reversed without charge. See page 23.



The Columbia—A Real Gem—9 Plans—Price \$478 And We Pay The Freight



This pretty cottage offers a chance to start home ownership on the very smallest of savings. Later successes may come, enabling a larger and more expensive home. But the Columbia is the starting point, conserving expenses, inspiring thrift, and saving rent.

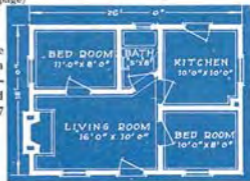
You may choose any one of the nine floor plans shown. They are all priced alike—\$478 and we pay the freight. The Columbia is size 18x26 ft. Strong 4x6 built-up sill supports clean straight 2x6 No. 1 floor joists on 24-inch centers. Studding and ceiling joists are of splendid No. 1 2x4 stock and on 16 inch centers. Rafters of same stock on 24 inch centers. Finest grade close grained, clear tongued and grooved flooring with 2 1/4 inch face, supplied for every house. Beautiful Clear A—Redwood bevel siding offers indestructible protection to the home, while the exposed finish lumber such as corner boards, porch work, window and door casings are practically free from any defect such as knots, etc. No. 1 air-

(Continued on next page)



Columbia No. 1

The porch size 14x6 feet shown in picture below may be had by adding \$47 to the price.



Columbia No. 2



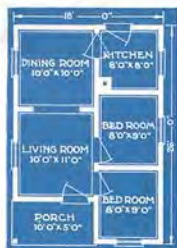
Columbia No. 9

The Savings After Building a Small Home will add more to your Happiness than the luxuries of a big home—All Columbia's \$478

dried lath are supplied for all walls and ceilings. Sound roof sheathing is to be laid tight. Roof is covered with best grade green slate surfaced roofing. Double sliding sash windows with clear glass, size 26x24, glazed ready to hang for all rooms except bath room, where swinging casement glass size 18x24 is furnished. Interior woodwork is made of clear, beautiful grained stock, while all inside doors are of handsome two-panel design, size 2 feet 8 inches by 6 feet 8 inches. Glass in upper half of front and rear doors. Clear 6 inch two member base boards. Cellar stairs furnished when shown in plans. Highest grade paint manufactured is supplied for two coats for outside while stain and varnish is furnished for the interior trim and doors. This quality insures perfect protection to materials and most attractive finish. Mortised locksets with brushed brass escutcheons in attractive designs come for each door in the house, except dining room door which is furnished with double acting floor hinge. Spring window bolts for all windows together with all nails necessary for constructing house are included. The height of ceilings is eight feet and the roof has one quarter pitch. Exposed eaves are of one foot projection. The foregoing is an accurate description of the Columbia as furnished for \$478 in Single Construction. Double Construction is identical except that following materials are added: Outside wall sheathing under bevel siding with building paper between; sub-floor sheathing under finish floor with building paper between two floors. Sash weights, sash pulleys, and sash locks for all double sliding windows and additional nails for the above materials. Price of any Columbia in Double Construction is \$559. Plans reversed without charge. See page 23.



The porch shown in the above picture of the Columbia will be furnished for \$55. It is 14x6 feet in size and the price includes all materials.



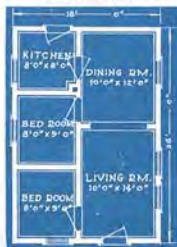
Columbia No. 3



Columbia No. 4



Columbia No. 5



Columbia No. 6



Columbia No. 8



Columbia No. 10

The Bluebird—A Home of Dream-Like Perfection—Price \$765 And We Pay The Freight



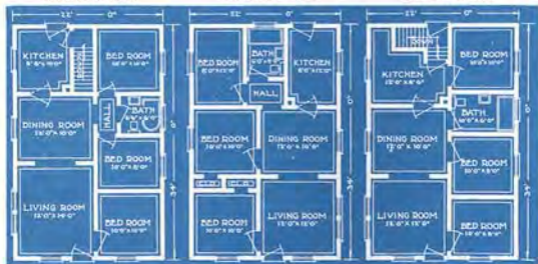
THE BLUEBIRD is a home of beautiful proportions, interesting detail and excellent interior arrangements. To own it insures the fullest satisfaction in everything that goes to make a real home. It will measure up to your highest expectations, from the strength of its sturdy timbers to the charm and beauty of woodwork and finish. Three floor plan arrangements are shown below. They are all priced alike. The price in single construction, specifications for which are shown at the bottom of the page, is \$765. The price in double construction is \$869 and the specifications are the same as below except that the following materials are added: Sub-floor sheathing under finished floor with building paper between two floors, outside wall sheathing under bevel siding with building paper between, sash weights, cord, pulleys and locks for all double sliding windows and additional nails for this extra material. Porch size 16x8 feet shown in picture may be had by adding \$99 to above prices.

Specifications, The Bluebird: BLUE BIRD—(Single Construction). Size 22x34, 6x6 inch built-up sill, 2x8 inch wall and partition studing on 16 inch centers. Clear 2 3/4 inch face tongued and grooved flooring, 2x4 inch walls. Clear outside finish. 2x4 inch ceiling joists on 16 inch centers. 2x4 rafters on 24 inch centers. Roof sheathing laid tight. Best quality green slate-surfaced roofing. Check rail windows and frames, size of glass in each sash 20x24 inches. Bath room and kitchen, size of glass, in each sash 20x16 inches. Clear interior trim. Clear 6 inch two member base-board. Door frames and doors size 2 feet 8 inches by 6 feet 8 inches, highest quality fir. Front and rear doors upper half glazed. Cased openings furnished where shown in plans. Cellar stairs furnished when shown in plans. Two coats of paint for exterior. Stain and varnish for interior trim and doors. All nails, mortised locksets, hinges, double acting floor hinges, and spring window bolts to complete house. Height of ceiling 8 feet. Roof 3/4 pitch. Exposed eaves 1 foot projection. Plans reversed without charge. See page 21.

Blue Bird No. 1

Blue Bird No. 2

Blue Bird No. 3



The Cedars—A Real Beauty—4 Plans—Price \$618 And We Pay The Freight



The Cedars is a beautiful bungalow, marvelously priced and remarkably designed. The photograph above illustrates the charm and home appeal of the exterior. From the four floor plan arrangements you will be sure to find one that exactly meets your ideas of a comfortable, convenient, sturdy home.

The price in single construction, specifications for which are given below, is \$618 which includes outside walls furnished with siding instead of shingles. Shingles will be furnished for walls, if desired, without extra cost when double construction is ordered.

The price of the Cedars in double construction is \$725 and the specifications are the same as for single

construction except that the following materials are added: Sub-floor sheathing under finish floor with building paper to be placed between the two floors, outside wall sheathing under bevel siding or shingles with building paper to be placed between, sash weights, cord, pulleys and sash locks for all double sliding windows, additional nails for the above extra materials. Porch shown in picture may be had by adding \$99 to the price. Size of porch 16 feet by 8 feet.

Cedars Plan No. 1



Cedars Plan No. 3



Cedars Plan No. 4



Cedars Plan No. 5



Specifications for Cedars

CEDARS—(Single Construction.)
 Size 28x32. 4x6 inch built-up sill, 2x6 inch joists on 16 inch centers. Clear 2 1/2 inch face tongue and groove flooring, 2x4 inch wall and partition studing on 16 inch centers. Lath for lining all walls and ceilings. Clear A redwood bevel siding for outside walls. Clear outside finish. 2x4 inch ceiling joists on 16 inch centers. 2x4 rafters on 24 inch centers. Roof sheathing laid tight. Best quality green slate surficial roofing. Chuck rail windows and frames, size of glass in each sash 20x24 inches. Bath room has swinging casement, size of glass 18x24 inches. Clear interior trim. Clear 6 inch two member baseboard. Door frames and doors size 3 feet 8 inches by 6 feet 8 inches, highest quality fir. Front and rear doors upper half glazed. Casement openings furnished where shown in plans. Two coats of paint for exterior. Stain and varnish for interior trim and doors. All nails, mortised locksets, hinges, double setting floor hinges and spring window bolts to complete house. Height of ceiling 8 feet. Roof 1/2 pitch. Exposed eaves 1 foot projection. Plans reversed without charge, see page 11.

The Victory—Astonishingly Priced—Only \$898 And We Pay The Freight



WHEN twenty years time and thought are devoted to one subject, surely you can know that the experience gained is of great value.

For twenty years the Aladdin Company has devoted all its energy toward perfecting homes. Perfection in a home means much.

It means, among other things, that the materials of which the home is constructed must be of the very highest quality.

It means that the construction used in the building of the home must give strength, sturdiness, and the ability to withstand the wear of time.

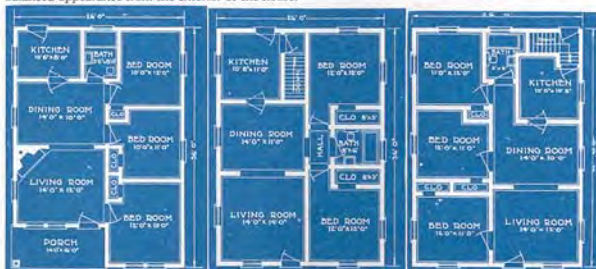
It means that the roof must be weather proof, and the paints used must be of the highest quality to give not only a well appearing home but perfect protection from the action of the weather in all seasons of the year.

The completed home must be well insulated. It should be easy to heat in winter and easy to keep cool in summer.

It means that the inside and outside doors must be so carefully located that they will be of convenient access in going from one room to another. These locations must also be studied to permit satisfactory arrangement of furniture and furnishings.

The location of windows is a problem in itself. Not only must the position of large pieces of furniture of common use in all homes be considered, but the number of windows to insure perfect ventilation cannot be lost sight of.

Windows must be properly placed to present the best appearance within a room and also to give a balanced appearance from the exterior of the house.



The Victory Plan W

The Victory Plan Z

The Victory Plan Y

It has been the ambition of Aladdin to provide all these points of perfection in a home and at the same time sell that home at a lower price than it could be purchased for from any other source.

Six arrangements of the Victory, all with the same outside dimensions, offer an opportunity to pick exactly the floor plan your needs demand. Any of these Victory homes can be had for \$898.

Another point of perfection is brought out in considering these six different plans of the Victory home. There are valuable features included in each, yet each offers a particular arrangement for a particular need. If you desire to stucco the outside of your home, we will furnish sheathing and lath for the outside walls at the price quoted above. Price in single construction \$898 as described in specifications below. Price of Victory in double construction is \$1024 and specifications are same as below except that following materials are added: Sub-floor sheathing under finished floor with building paper to be placed between the two floors; outside wall sheathing under bevel siding with building paper to be placed between; sash weights, cords, pulleys and sash locks for all double sliding windows; additional nails for above extra materials.

Specifications, The Victory: VICTORY—(Single Construction.) Size 26x36. 6x6 inch built up sill 2x8 inch joists on 16 inch centers. Clear 2 1/4 inch face tongued and grooved flooring. 2x4 inch wall and partition studding on 16 inch centers. Lath for lining all walls and ceilings. Clear A redwood bevel siding for outside walls. Clear outside finish, 2x4 in. ceiling joists on 16 in. centers. 2x6 in. rafters on 24 in. centers. Roof sheathing laid tight. Best quality green slate-surfaced roofing. Check rail windows and frames, size of glass in each sash 26x24 inches, sash glazed ready to hang. All Bathrooms also Kitchens in plans X, Y and Z supplied with check rail windows, size of glass in each sash, 26x16 inches. Clear interior trim. Clear 6 inch two member baseboard of attractive design. Door frames and doors size 2 feet 8 inches by 6 feet 8 inches, highest quality fir. Cased openings furnished where shown in plans. Front and rear doors glazed upper half. Cellar stairs furnished when shown in plans. Two coats of paint for exterior. Stain and varnish for interior trim and doors. All nails, mortised locksets, hinges, double acting floor hinges and spring window bolts to complete house. Height of ceiling 8 feet. Roof 3/4 pitch. Exposed eaves 1 foot projection. Plans reversed without extra charge, see page 23.



Picture of Victory Showing Big Porch

The front porch shown in illustration above is size 24x8 feet and will be furnished at an extra cost of \$145. It is designed for use on side or front of any of these plans and the photo above gives a splendid idea of the appearance of the Victory with this attractive porch.



A Cozy Interior

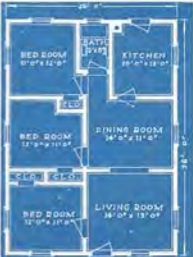
This is how one experienced home-maker has arranged the interior. There is ample opportunity to express one's taste in this roomy house.



The Victory Plan E



The Victory Plan X



The Victory Plan A

The Potomac—A Quaint Colonial Bungalow—Price \$919 And We Pay The Freight

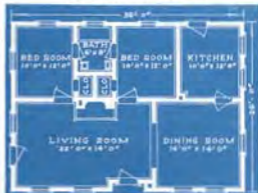


THE POTOMAC is a master design. Colonial atmosphere is ever appealing to the home owner for it bespeaks hospitality, generosity, old-fashioned simplicity and true goodness. From its clean straight timbers to its beautifully machined siding, and handsomely grained woodwork it represents the very best in everything desirable in a real home. The snubbed gable ends lend a quaint touch making the Potomac a home of distinction. Three attractive floor plan arrangements for the Potomac are shown here. Pergola type porch comes extra at \$69—size 8x14 feet. This porch has matched ceiling roof covered with sheet tin. The price of the Potomac in single construction is \$919 as described in specifications below. The price in double construction is \$1043 with specifications the same as below except that the following materials are added: Sub-floor sheathing below finish floor with building paper between; outside wall sheathing under bevel siding with building paper between, sash weights, cords and sash locks, for all double sliding windows and extra nails for this additional material.

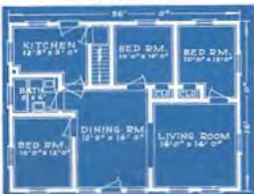
Specifications, The Potomac: (Single Construction.)

Size 30 by 26 feet. 2x4 inch built-up sill. 2x8 inch floor joists on 16 inch centers. Clear 2 1/2 inch fane tongued and grooved flooring. 2x4 inch wall and partition studs on 16 inch centers. Lath for lining all walls and ceilings. Clear A redwood bevel siding for outside walls. Clear outside finish. 2x4 inch ceiling joists on 16 inch centers. 2x6 inch rafters on 24 inch centers. Roof sheathing laid tight. Best quality green slate surfaced roofing. Check rail windows and frames, size of glass in each sash 20x24 inches, sash glazed ready to hang. Kitchen and bath room supplied with check rail window, size of glass in each sash 20x16 inches. Clear interior trim. Clear 6 inch two member baseboard of attractive design. Door frames and doors size 2 ft. 8 inches by 6 ft. 8 inches, highest quality fir. Cased openings furnished where shown in plans. Front and rear doors glazed upper half. Cellar stairs furnished where shown in plans. Two sets of stairs for exterior. Stairs and wainscots for interior trim and doors. All nails, mortised locksets, hinges, double acting hose hanger and spring window bolts to complete house. Height of ceiling 8 feet. Roof 1/2 pitch. Exposed eaves 1 foot projection. Plans reversed without charge, see page 23.

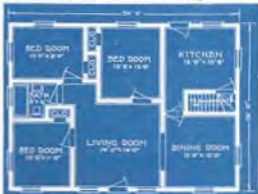
The Potomac—Plan M



The Potomac—Plan L



The Potomac—Plan Q



The Coral Gables—A New Aladdin—Price \$815 And We Pay The Freight



REFINEMENT of detail and the true simplicity of Colonial architecture distinguish this beautiful bungalow. As a home it satisfies every wish in beauty, character, comfort, convenience, and remarkable value. Three floor plans are shown, each different in size, arrangement and price. Any one of these plans can be placed, either the narrow way of your lot or the long way. One of the outside doors opening into the living room can be replaced by a window if desired at no extra cost.

The price in single construction, as described in specifications below, is \$815 for Plan No. 1, \$887 for Plan No. 2, and \$914 for Plan No. 3. The price in double construction is \$933 for Plan No. 1, \$998 for Plan No. 2, and \$1034 for Plan No. 3, with specifications the same as below, except that the following materials are added: Sub-floor sheathing below finish floor with building paper between; outside wall sheathing under bevel siding with building paper between, sash weights, cords and sash locks, for all double sliding windows and extra nails for this additional material. Porch size 12x8 feet will be furnished by your adding \$75 to the price.

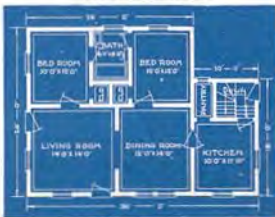
Specifications, Coral Gables: (Single Construction)

2x8 inch joists on 16 inch centers. Clear 2 3/4 inch face tongued and grooved flooring. 2x4 inch wall and partition studs on 16 inch centers. Lath for lining all walls and ceilings. Clear A reduced bevel siding for outside walls. Clear outside finish. 2x4 inch ceiling joists on 16 inch centers. 2x4 rafters on 24 inch centers furnished for Nos. 1 and 2, 2x6 rafters on 24 inch centers for No. 3. Roof sheathing laid tight. Best quality green slate surfaced roofing. Check rail windows and frames, size of glass in each sash 20x24 inches. Kitchen and bath room supplied with check rail windows, size of glass in each sash 20x16 inches. Clear interior trim. Clear 6 inch two member baseboard. Door frames and doors size 2 feet 8 inches by 6 feet 8 inches, highest quality fir. All outside doors upper half glazed. Cellar stairs furnished. Casid openings furnished where shown in plans. Two coats of paint for exterior. Stain and varnish for interior trim and doors. All nails, mortised locksets, hinges, double acting floor hinges and spring window bolts to complete house. Height of ceiling 8 feet. Roof 3/4 pitch. Exposed eaves 1 foot projection. Plans reversed without charge. See page 23.

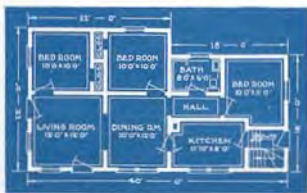
Coral Gables No. 1



Coral Gables No. 3



Coral Gables No. 2



The Liberty -- A Splendid Home -- Price \$959 And We Pay The Freight

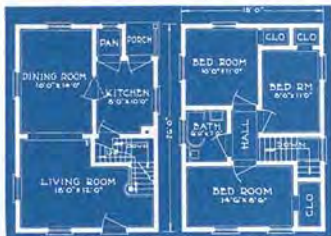


A STRONG, substantial, dignified and complete American home! This might be described, in one sentence, the splendid Liberty. To avoid the wasting of a single penny, is a duty we all owe to our families and ourselves. To accomplish this object in the building of a home is the most laudable of all ambitions. Aladdin designers set about the task of creating a structure in which there would not be wasted one foot of material—one inch of space.

Clear square lines, well proportioned walls and roof, regular placement of windows, blend into perfect harmony. Two interior arrangements are offered at the same price, one having three bedrooms and one with four bedrooms. The Liberty is priced at \$959 for single construction, specifications for which are shown at bottom of page, and the price for double construction is \$1092. Double construction specifications are the same as for single construction except that the following materials are added: Sub-floor sheathing under finished floors with building paper to be placed between the two floors, outside wall sheathing under bevel siding with building paper to be placed between, sash weights, cord, pulleys and sash locks for all double sliding windows, and additional nails for the above extra materials. Porch size 16 x 8 foot will be furnished by your adding \$112 to the price.

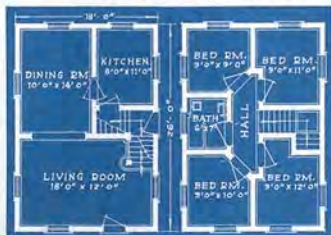
First Floor Plan J

Second Floor Plan J



First Floor Plan K

Second Floor Plan K



Specifications, The Liberty: (Single Construction.)

6 x 6 inch built-up sill. 2 x 8 inch joists on 16 inch centers first and second floors. Clear 2 1/4 inch face, tongued and grooved flooring. 2 x 4 inch wall and partition studding on 16 inch centers. Lath for lining all walls and ceilings. Clear A redwood siding for outside walls. Clear outside finish, 2x4 inch ceiling joists on 16 inch centers. 2x4 inch rafters on 24 inch centers. Hip rafters 2x6 inches. Roof sheathing laid tight. Best quality green slate surfaced roofing. Check rail windows and frames size of glass in each sash 26x28 inches 1st floor, 26x24 inches 2nd floor. Sash glazed ready to hang. Bathroom glass each sash 26x16 inches. Clear interior trim. Clear 6 inch two member baseboard. Door frames and doors size 2 feet 8 inches by 6 feet 8 inches, highest quality fir. Frost and rear doors upper half glazed. Casement openings where shown in plans. Attractive circle tread main stairs. Cellar stairs under main stairs. Two coats of paint for exterior. Stain and varnish for interior trim and doors. All nails, mortised lock-sets, hinges, double acting floor hinges and spring window bolts to complete house. Size of house 18x26 ft. Height of ceilings 9 ft. 1st floor—8 ft. 2nd floor; Hip roof 3/4 pitch. Exposed eaves 1 foot 6 inch projection. Plans reversed without charge. See page 23.

The Welland—Ideal 8 Room Home—Price \$1098 And We Pay The Freight



WE WERE inspired to develop the Welland because of the great popularity of this type on Long Island and the evident satisfaction it has given to all owners in this suburban community adjoining New York City and elsewhere. The utility of a two-story type with the beauty of the story and a half is accomplished, while holding the apparent height of the house down, through splendid handling of eaves and roof lines. If you will study the interior plans carefully you will enthusiastically approve our statement that there was never a more harmonious arrangement or a more complete attainment of convenience than is accomplished here. A spacious entrance hall with semi-open stairs, a large and well proportioned living room, an attractive dining room, an efficiently planned kitchen with entrance direct to front hall, grade cellar entrance and nook for ice box complete the first floor. On the second floor are found three light airy bedrooms, each with closet and a large bathroom. And the Welland can be built on a lot of thirty feet frontage, or less.

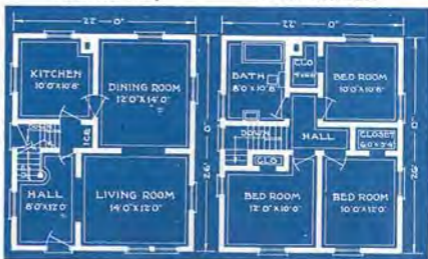
The Welland is priced at \$1098 for single construction, specifications for which are shown at bottom of page, and the price for double construction is \$1285. Double construction specifications are the same as for single construction except that the following materials are added: Sub-floor sheathing under finished floors with building paper to be placed between the two floors, outside wall sheathing under bevel siding with building paper to be placed between, sash weights, cord pulleys and sash locks for all double sliding windows, and additional nails for the above extra materials. Porch size 12x8 foot will be furnished by your adding \$75 to the price.

Specifications, The Welland: (Single construction). Size 22x26. 6x6 built up sill; 2x8 inch joists on 16 inch centers 1st and 2nd floors. Clear 2 1/4 inch face tongued and grooved flooring. 2x4 inch wall and partition studding on 16 inch centers. Lath for lining all walls and ceilings. Clear A redwood bevel siding for outside walls. Clear outside finish, 2x4 inch ceiling joists. 2x6 inch rafters on 24-inch centers. Roof sheathing laid tight. Best quality green slate surfaced roofing. Check rail windows and frames, size of

glass in each sash 26x28 inches 1st floor, 26x24 2nd floor. Sash glazed ready to hang. Kitchen and bath room supplied with check rail window, size of glass in each sash 26x16 inches. Clear interior trim. Clear 6 inch two member baseboard. Door frames and doors size 2 feet 3 inch, by 6 feet 8 inch, highest quality fir. Front and grade doors upper half glazed. Cased openings furnished where shown in plans. Attractive circle tread stairs as shown on plans. Grade entrance/cellar stairs under main stairs. Two coats of paint for exterior. Stain and varnish for interior trim and doors. All nails, mortised locksets, hinges, double acting floor hinges and spring window bolts to complete house. Height of ceiling 9 feet 1st floor—8 feet 2nd floor, sloping to 6 feet 6 inches at front and rear walls. Roof 1/4 pitch. Exposed eaves 1 foot projection. Plans reversed without charge. See page 23.

First Floor Plan

Second Floor Plan



The Adams—A Typical American Home—Price \$1089 And We Pay The Freight



THE ADAMS is an American home of chaste simplicity. Straight architectural lines create a pleasing and substantial style of home, which fulfills the needs of those home builders who would rather invest their money in conveniences than embellishments. Note the exposed rafters, shingled gable and belt at second story. A spacious living room with semi-open stairway, well proportioned dining room and model kitchen with grade cellar entrance, complete the first story. The second story has three excellent bedrooms, four closets and bath. We show an optional second story which incorporates four bedrooms; either may be had at the same price. The price in single construction is \$1089 as per specifications below. The price in double construction is \$1255, with specifications same as below except the following materials are added: Sub-floor sheathing under finished floors with building paper to be placed between two floors, outside wall sheathing under bevel siding with building paper to be placed between, sash weights, cord, pulleys and sash locks for all double sliding windows and additional nails for the above extra materials. The porch size 16x8 will be shipped if you will add \$99 to price.

Specifications, The Adams: (Single construction). Size 22x26. 6x6 built up sill. 2x6 inch joists on 16 inch centers and partition studing on 16 inch centers. 1st and 2nd floors. Clear 2 1/4 inch face tongued and grooved flooring. 2x4 inch wall and partition studs on 16 inch centers. Lath for lining all walls and ceilings. Clear A redwood bevel siding for outside walls. Clear outside finish. 2x4 inch ceiling joists on 16 inch centers. 2x4 inch rafters on 24 inch centers. Roof sheathing laid tight. Best quality green slate surfaced roofing. Check rail windows and frames, size of glass in each sash 26x28 inches 1st floor, 26x24 2nd floor. Sash glazed ready to hang. Kitchens and bathroom supplied with check rail windows, size of glass in each sash 26x16 inches. Clear traverse trim. Clear 6 inch rambler baseboard. Door frames and doors size 2 feet 8 inches by 6 feet 8 inches, highest quality fir. Front and rear doors upper half glazed. Casual openings furnished where shown in plans. Attractive outside front stairs as shown on plans. Grade entrance cellar stairs under main stairs. Two coats of paint for exterior. Stain and varnish for interior trim and doors. All nails, mortised locksets, hinges, shoulder acting floor hinges and spring window bolts to complete house. Height of ceiling 9 feet 1st floor—8 feet 2nd floor. Roof 1/2 pitch. Exposed eaves 1 foot projection. Plans reversed without charge see page 23.

First Floor Plan

Second Floor Plan No. 1

Second Floor Plan No. 2



The Pilgrim—A Perfect Home—Price \$1148 And We Pay The Freight

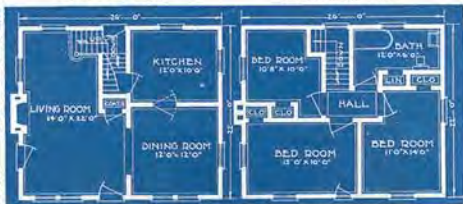


THE PILGRIM is an interesting adaptation of Dutch architecture to the American Colonial type. This style has come to be the most popular for modest two story homes all over the country. Perfect harmony is manifest in the Pilgrim. While the impression is of a story and a half house, all ceilings both first and second floors are square with full height side walls. Study the interior. A 14x22 foot living room, 12x12 foot dining room, 12x10 foot kitchen, a coat closet and grade cellar entrance complete the first floor. The second floor has three bedrooms, hall, three closets, linen closet and bath. The price of the Pilgrim in single construction, specifications for which are shown below, is \$1148. The price in double construction is \$1308 and specifications are the same as for single construction except that the following materials are added: Sub-floor sheathing under finished floors, with building paper between the two floors. Outside wall sheathing under bevel siding with building paper between, sash weights, cord, pulleys and sash locks for the double sliding windows, and additional nails for the extra materials. Pergola porch shown in the picture is roofed, giving protection and may be had at \$69 additional. Size of porch 8 feet by 14 feet.

Specifications, The Pilgrim: (Single Construction.) Size 22x26. 6x6 built-up sill; 2x8 inch joists on 16 inch centers 1st and 2nd floors. Clear 2 3/4 inch face tongued and grooved flooring. 2x4 inch wall and partition studding on 16 inch centers. Lath for lining all walls and ceilings. Clear A redwood bevel siding for outside walls. Clear outside finish. 2x4 inch ceiling joists on 16 inch centers. 2x4 inch rafters on 24 inch centers. Roof sheathing laid tight. Best quality green slate surfaced roofing. Check rail windows and frames size of glass in each sash 26x28 inches 1st floor, 26x24 2nd floor. Sash glazed ready to hang. Kitchen and bath room supplied with check rail window, size of glass in each sash 26x16 inches. Clear interior trim. Clear 6 inch two member baseboard. Door frames and doors size 2 feet 8 inches by 6 feet 8 inches, highest quality fir. Front and rear doors upper half glazed. Casement openings furnished where shown in plans. Attractive circle tread stairs as shown on plans. Grade entrance cellar stairs under main stairs. Two coats of paint for exterior, Stain and varnish for interior trim and doors. All nails, mortised locksets, hinges, double acting floor hinges and spring window bolts to complete house. Height of ceiling 9 feet 1st floor — 8 feet 2nd floor. Roof 3/4 pitch. Boxed eaves 1 foot projection. Plans reversed without charge see page 23.

First Floor Plan

Second Floor Plan



Remember Aladdin pays the freight and guarantees the safe arrival of all materials.

The Capitol—Fine Dutch Colonial Type—Price \$1695 And We Pay The Freight



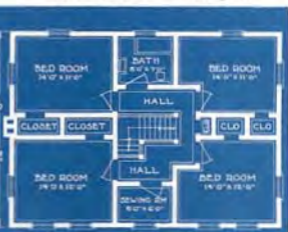
THE entrance hall with semi-open stairway and cloak closet demand your admiration the minute you enter. Arches lead to the right and left into living room and dining room. Think of the possibilities of a living room 26 feet deep and 14 feet wide! Leading from this interesting room is a library or den. On the other side of the house is found pantry separating dining room and kitchen, with cellar entrance under the main stairway. There are six rooms on the second floor—and closets. The Capitol is priced in single construction at \$1695. The price in double construction is \$1929 and the specifications are the same as for single construction except that the following materials are added: Sub-floor sheathing under finish floors with building paper between; outside wall sheathing under bevel siding with building paper between and extra nails for all additional materials. Pergola porch, with covered roof, size 8x14 feet, will be furnished by your adding \$69 to the price. If you want the 10x14 foot Porte Cochere shown on right side of house add \$58 to price.

Specifications, The Capitol: (Single Construction.) Size 36x26, 6x8 inch built-up sills, 2x8 inch joists on 16 inch centers 1st and 2nd floors. Clear 2 1/4 inch face tongued and grooved flooring, 2x4 inch wall and partition studding on 16 inch centers. Lath for lining all walls and ceilings. Clear A redwood bevel siding for outside walls. Clear outside finish, 2x4 inch ceiling joists on 16 inch centers. 2x6 inch rafters on 24 inch centers. Roof sheathing laid tight. Best quality green slate surfaced roofing. Chuck rail windows and frames size of glass in each sash 26x24 inches, 1st floor; 26x24 inches, 2nd floor. Sash glazed ready to hang. Bath room and kitchen supplied with check-rail window, size of glass in each sash, 36x16 inches. Clear interior trim. Clear 6 inch two member baseboard. Door frame and doors size 2 feet 8 inches by 6 feet 8 inches, high quality fir. Front, rear, and side doors upper half glazed. Attractive circle tread stairs as shown on plan. Cellar stairs under main stairs. Casement openings furnished where shown in plans. Two coats of paint for exterior. Stain and varnish for interior trim and doors. All nails, mortised locksets, hinges and double acting floor hinges, sash weights, sash cord, sash pulleys and sash locks to complete house. Height of eadings 9 feet 1st floor, 8 feet 2nd floor. Ceilings on 2nd floor are full height, not sloped. Roof 1/4 pitch. Boxed eaves 1 foot projection. Plans reversed without charge. See page 23.

First Floor Plan—The Capitol



Second Floor Plan—The Capitol



The Marigold — Story-and-a-Half — Price \$789 And We Pay The Freight



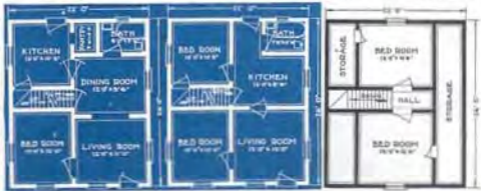
THE MARIGOLD offers a story and a half home that can be built at the very lowest cost. The price quoted above provides you with the home with the first floor finished in the same way as all our other houses are furnished. The second floor is unfinished except for the floor. The Marigold can be furnished in either of the two first floor plans shown below. Regardless of which plan you select it is possible for you to arrange for two extra bed rooms on the second floor. Our suggestion of a convenient and practical arrangement is shown opposite the first floor plans. When you purchase the home if you wish us to also include materials for finishing the second floor in accordance with our suggestion, we will be glad to do so for \$93 additional. The small sketch over the plan arrangement suggested for the second floor, will inform you of the ceiling height obtainable.

The price of the Marigold in Single Construction, specifications for which are listed below, is \$789. In Double Construction the price is \$888 and the specifications are the same as in single construction except that the following materials are added: Sub-flooring for first floor only with building paper to be placed between the sub-flooring and finish flooring, outside wall sheathing under bevel siding with building paper between, sash weights, cord, pulleys and locks for all double sliding windows and additional nails for extra materials. Whether you purchase in Single Construction or Double Construction, materials with which to finish the second floor in accordance with our suggestion can be furnished for \$93 additional. Porch shown in picture may be had by adding \$120. Size of Porch 20x8 feet.

Specifications, The Marigold: (Single Construction) Size 22x26 feet. 6x6 inch built up sill. 2x8 inch joists on 16 inch centers first floor, 2x6 joist on 16 inch centers second floor. Clear 2 1/4 inch lying all walls and ceilings on first floor. Clear A reduced bevel siding for outside walls. Clear outside finish. 2x4 inch rafters on 24 inch centers. Roof sheathing laid tight. Best quality green slate surfaced roofing. Check rail windows and frames, size of glass in each sash 18x24 inches, sash glazed ready to hang. Kitchen supplied with check rail window, size of glass in each sash 20x10 inches. Bath room has swinging casement window, glass size 18x24 inches. Clear interior trim. Clear 6 inch two member base-board of attractive design. Door frames and doors, size 2 ft. 8 inches by 6 ft. 8 inches, highest quality fir. Front and rear doors glazed upper half. Casement openings where shown in plans. Stairs to second floor and cellar furnished. Two coats of paint for exterior. Sash and springs for inside.



First Floor—Plan A First Floor—Plan B Suggested Second Floor Plan



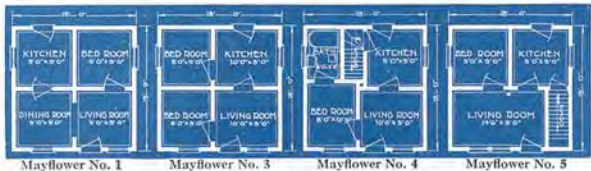
The Aladdin Co. guarantees the quantity and quality of all materials and their safe arrival at destination.



THE Mayflower brings happiness to thousands of families who do not require a larger home. Also, it permits the family of modest means to get into a snug, warm and strong little home at almost unbelievable little cost. This home is being put up by many owners who have had no experience in carpenter work. Our instructions with pictures explain every step. The Mayflower is shown below in four different plan arrangements and any one of the four plans can be furnished in your choice of three different sizes. The illustration and plans are of the 18x18 ft. Mayflower Homes. The house can also be furnished in a 22x22 ft. size or in a 26x26 ft. size. If purchased 22x22 ft. in size, each room would be two feet larger each way than as shown in our 18x18 ft. plans. If purchased 26x26 ft. in size, each room would be four feet larger each way than as shown in our 18x18 ft. plans.

The size, 18 x 18 feet, is priced at \$375 in Single Construction and at \$442 in Double Construction. The size, 22 x 22 feet, is priced at \$485 in Single Construction and at \$568 in Double Construction. The size 26 x 26 feet is priced at \$635 in Single Construction and at \$749 in Double Construction. Porch as shown, size 14 x 6 feet, will be furnished with the Mayflower in any of the three sizes by your adding \$47 to the price. Any of our larger porches shown on other homes in our catalog can be purchased in preference to the Mayflower porch if you desire and providing the width of the porch is not too great for the width of the Mayflower home in the size you have selected.

Specifications, Mayflower Single Construction, Size 18 x 18: 4x6 inch built-up sill. 2x6 inch joists on 24 inch centers. Clear tongue and grooved siding for outside walls. Clear outside finish. 2x4 inch ceiling joists on 16 inch centers. Clear A redwood bevel siding for outside walls. Clear outside finish. 2x4 inch ceiling joists on 16 inch centers. 2x4 inch rafters on 24 inch centers. Roof sheathing laid tight. Best quality green slate surfaced roofing. Check-rail windows and frames size of glass in each sash 20x24 inches, sash glazed ready to hang. Kitchen, size of glass in each sash 26x16 inches. Clear interior trim. Clear 6 inch two member baseboard. Door frames and doors size 2 feet 8 inches by 6 feet 8 inches, highest quality fir. Front and rear doors upper half glazed. Cellar stairs furnished when shown on plans. Cased openings furnished where shown on plans. Two coats of paint for exterior. Stain and varnish for interior trim and doors. All nails, mortised locksets, hinges, double acting dining room floor hinges and spring window bolts to complete house. Height of ceilings 8 feet. Roof 1/2 pitch. Exposed eaves 1 foot projection. **Size 22x22 ft.** The Specifications are the same for the 22 ft. size except sill is built up to two inches and the floor joists are 2x8 inches on 16-inch centers. **Size 26x26 ft.** Specifications for the 26 ft. size are the same as for the 22 ft. size except rafters are 2x6 inches on 24 inch centers. **Double Construction** takes the same specifications as single construction with the following additions: Sub-floor sheathing under finished floor with building paper to be placed between the two floors, outside wall sheathing under bevel siding with building paper to be placed between, sash weights, cord, pulleys and sash locks for all double sliding windows and additional nails for the above extra materials. Plans reversed without charge. See page 23.



EXTRA FEATURES OBTAINABLE FOR ALADDIN HOUSES

For those Customers who wish to embellish their homes with a few distinctive touches, we have provided a number of features, as shown here, at but slight additional costs.

HOMECRAFT BOOKCASE ARCH



Has been used in thousands of homes and in every case has given perfect satisfaction. The spans are 2 1/2 feet wide, the columns 8 inches square. Start out complete with hardware and glass doors, as shown. Bookcase Arch, 3C-6.....\$66.00

CLOSET DOORS

Closet doors are not shown, but included in our plans at a great majority feature the doors omitted, but the eared openings left so they can use a curtain on the closet. If closet doors are desired they can be supplied at \$5.65 each, complete with mortised lock set and hinges.



Picture of Inside Doors for All Aladdin Houses

SPECIAL DOORS

Here we show two types of front doors, either one of which may be substituted at an additional charge of \$4.00, for the glazed doors shown and regularly furnished in the various designs. The No. 14 door, which is 2 feet 8 inches x 6 feet 8 inches in size, can also be furnished by pairs for the arch openings shown in the various designs at \$20.00 per pair.

They are not only included in the doors, but also the integral rail between the doors, lock set, two pairs of hinges, top and bottom bolt, and stain and varnish. When ordering special doors please specify in your order the style number of the door you desire.



No. 10



No. 14

FOUNDATION POSTS

We can furnish with your house shipment, wooden foundation posts 8 feet long at \$1.00 per post, or posts 4 feet long at 50 cents per post.

GREEN SLATE SURFACED SHINGLES

We can furnish green slate surfaced shingles instead of the slate surfaced roofing specified on the various houses at the following additional charge:

Adams.....	\$36.00	Potomac.....	\$51.00
Bluebird.....	44.00	Victory.....	52.00
Capitol.....	63.00	Welfare.....	42.00
Cedar.....	32.00	GARAGES	
Columbia.....	28.00	Castile 18x16.....	15.00
Coral Gables No. 1.....	50.00	Castile 18x18.....	20.00
Coral Gables No. 2.....	54.00	Castile 18x20.....	22.00
Coral Gables No. 3.....	56.00	Ford 8x14.....	8.00
Emerald.....	38.00	Ford 10x16.....	12.00
Liberty.....	32.00	Ford 10x18.....	14.00
Marigold.....	32.00	Lincoln 20x18.....	22.00
Mayflower 18x18.....	20.00	Lincoln 20x20.....	24.00
Mayflower 22x22.....	28.00	Studebaker 12x18.....	14.00
Mayflower 26x26.....	38.00	Studebaker 12x18.....	16.00
Pilgrim.....	40.00	Studebaker 12x20.....	18.00

They are made of the same high grade materials as the roofing. The size of each shingle is 9 inches wide by 12 1/2 inches long. They lay 4 inches to the weather, thereby giving you better than three thicknesses on your roof. We can recommend them in every way to give perfect satisfaction.

CELLAR WINDOWS

For wall opening 3 feet wide by 2 feet high, complete with frame, glazed sash and hardware.....\$4.10

For wall opening 3 feet wide by 2 feet 8 inches high, complete with frame, glazed sash and hardware.....\$3.75

It is not necessary to forward the cellar frames before the house is shipped for by leaving the wall openings described above the frames can be set in after the foundation has been erected.

PORCHES INTERCHANGEABLE

As you will notice all porches are gabled separately. This is done so that if desired, the porch can be omitted or some other porch shown in the catalog used. This is possible providing the width of the porch is not too great for the width of the house ordered.

GRADE CELLAR ENTRANCE No. 2

This additional size 7x8 feet is designed to afford a grade cellar entrance and can be attached to any Aladdin house.

All material necessary for the complete addition is included together with steps to basement and steps to basement. Price of this addition in single construction \$70, double construction \$75.



LABOR ESTIMATES On the various houses shown in this catalog based on averages compiled from actual reports we have received from different parts of the country as to the time of construction:

Name of House	Carpenter Work Single Construction	Carpenter Work Double Construction	Painting Interior and Exterior	Surface to Lath
Adams	2 men 20 days	2 men 22 1/2 days	1 man 10 days	520 yds.
Blue Bird	2 men 12 days	2 men 14 days	1 man 9 1/2 days	343 yds.
Capitol	1 man 20 days	2 men 22 1/2 days	2 men 8 days	790 yds.
Cedar	2 men 10 1/2 days	2 men 12 days	1 man 6 days	265 yds.
Columbia	2 men 8 days	2 men 9 1/2 days	1 man 7 days	213 yds.
Coral Gables No. 1	2 men 12 days	2 men 13 days	1 man 6 1/2 days	360 yds.
Coral Gables No. 2	2 men 13 days	2 men 13 days	1 man 7 days	328 yds.
Coral Gables No. 3	2 men 14 days	2 men 16 days	1 man 7 days	320 yds.
Emerald	2 men 17 days	2 men 19 1/2 days	1 man 10 days	410 yds.
Liberty	2 men 17 days	2 men 19 1/2 days	1 man 9 1/2 days	424 yds.
Marigold	2 men 13 days	2 men 15 days	1 man 7 days	262 yds.
Mayflower 18x18	1 man 6 days	2 men 7 days	1 man 4 days	155 yds.
Mayflower 22x22	1 man 8 days	2 men 9 1/2 days	1 man 5 days	225 yds.
Mayflower 26x26	1 man 11 days	2 men 12 1/2 days	1 man 6 days	328 yds.
Pilgrim	2 men 21 days	2 men 23 1/2 days	1 man 10 days	515 yds.
Potomac	2 men 14 days	2 men 16 days	1 man 7 days	370 yds.
Victory	2 men 14 days	2 men 16 days	1 man 7 days	370 yds.
Welfare	2 men 19 days	2 men 21 1/2 days	1 man 10 days	450 yds.

QUALITY FIXTURES AT WHOLESALE PRICES

3A-15 Parlor Fixture

Furnished with 37-wt. nickel plated metal base. Finish of 20 small lights.

3A-15.....\$1.70

3A-16 Kitchen Fixture

Furnished in white enamel and has etched with white glass. 17" wide at bottom. Extends 17" down overall and is 6" in diameter at top.

3A-16.....\$1.40

3A-22 Bath Fixture

Furnished in white enamel and with key socket. Extends 1' out from wall and has 4 1/2" rampy metal wall.

3A-22.....\$1.10

3A-10 Living Room Fixture

A glass-light fixture furnished in Flemish brass. Extends down 17" overall from ceiling and has 16" spread. Center hole is 10 1/2" in diameter.

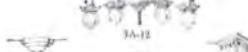
3A-10.....\$2.80



3A-10



3A-18



3A-12



3A-14

3A-16

3A-17

3A-17 Parlor Fixture

Some prefer a youth light of simple design as shown. Is furnished in brass and has four shades of blown glass. Extends down 17" and is 6 1/2" square at top.

3A-17.....\$1.80

3A-20 Chamber Fixture

Furnished in Flemish brass. Extends 2' out from wall and has oval wall plate that inclines. Also has key socket.

3A-20.....\$1.30

3A-19 Hall Fixture

Furnished in Ivory enamel. Extends down 7" overall from ceiling and has 6" spread. Can be used in either hall or chamber fixture.

3A-19.....\$1.20

3A-13 Dining Room Fixture

Furnished in Flemish brass. Is 20" long and has 16" spread. Center hole 11 1/2" in diameter with four arms branching from sides.

3A-13.....\$2.35

Prices of Fixtures Do Not Include Bulbs

PRICES ON THIS PAGE NET F. O. B. FACTORY

SOVEREIGN ALTROLA HEATER

\$52.00 FOR COAL COKE OR WOOD



Altrola price is far better in black iron finish with nickel plated trimmings as shown. It also furnishes the heater with a beautiful grained mahogany finish at extra cost as quoted below. This latter finish has everlasting yucca glass enamel applied under terrific heat, making it to become a part of the iron itself. It easily cleaned and gives better the appearance of a high grade solid of furniture.

Heats by Circulation. Altrola Heaters operate on same principle as an automobile air conditioner in other low fixtures. Cool air is drawn in at bottom and lower wing panel blows it up and down from the top money opening back through and top of heater becoming greatly heated and is discharged through upper fly wheel at top into the room at a high temperature. A water-tight completely closed circulation occurs, draught is banished in the air. In this way beautiful warm air is forced into every inch and corner of your home, insuring an even temperature throughout.

Specifications. Altrola Heaters are made in one size only and are intended for houses having just an average 5000 cubic feet of air space. Has horizontal fire front 19 inches in diameter with 10 most straight slip and handle very heavy. Body is of Aluminum, extra heavy. Grate consists of three sets of triangular bars and operated with slides through hole in ash door. Has heat door 9 1/2 x 11 inches and 1 inch reversible smoke pipe flue. Mounted on reversible legs. Requires floor space 25 x 25 inches. Height overall 49 1/2 inches. Weighs about 180 lbs. crated for shipment.

3A-222 Altrola in Black Finish.....\$52.00
3A-222M Altrola in Mahogany Finish.....79.40

ALADDIN CABINETTE

The cabinet to the right is obtained from factory completely assembled and White Enamelled all over, both inside and outside. Full post construction with three-ply paneled door, ends, back and bottom. Nickel trimmings. Anti-rust capers. Equipment includes only the four 6-inch deep shelves, door basket with hooks underneath, broom holder, hand-plate and mirror. Room enough for Hoover Electric Vacuum Cleaner, 19 inches. Width 22 1/2 inches. Depth 16 inches. Crated weight 115 lbs.

3A-24 Cabinet.....\$16.30

3A-26

CHINA

\$2.95



MEDICINE CHESTS

We show two styles of steel medicine chests; the wall type as above and a freestanding chest to the right. Both finished in White Enamel. Chest above has oval mirror 7 1/2 x 10 and glass door. Height 16 inches. Width 14 inches. Depth 8 inches. Fixture to right has 10 1/2" bevel glass mirror and two adjustable glass shelves. Requires wall mounting. 12 1/2 x 17 1/2 x 2 1/2".

3A-28 Chest \$5.85

SOVEREIGN KITCHEN CABINETS



3A-37 Kitchen Cabinet.....\$16.80

The Cabinet to the right has the following equipment: High-grade Refrigerator with metal interior. Interior of top compartment is glass enameled. Drop front curtain. Glass jar compartment consisting of swinging sugar bin with metal rim and cut-out one edge, one tea and five sugar jars. Large sliding metal silver flour bin. Full sliding top of white porcelain. Special bracket and block for food grinder, sliding hatched bread-board. Metal towel and coffee drawer with sliding metal lid. Base cupboard is equipped with sliding metal shelf and pan rack. Base has complete 1/2" bottom with substantial built-up framework underneath. Anti-rust capers. Deep-pool top construction on all doors and drawers. Height 60 in. Width 40 in. Depth 26 in. Crated weight 230 pounds.

3A-34 Cabinet, golden oak with prominent sliding top.....\$29.90

3A-35 Cabinet, white enamel with porcelain sliding top.....\$32.90



SEND FOR COMPLETE MERCHANDISE CATALOG

\$74.50

Buy This Complete Heater

Equipment includes check dial, damper, asbestos cement for cementing joints, water put, large duplex, washers, pulley, shaker handle, damper chains and wall plate.

Easy to Install An "Aladdin" is simple to install as there is no roasting up of floors, or any mutilation of walls or ceilings. Careful inspection of all castings in factory before shipment assures customer that he will have no trouble with parts not fitting. In addition to this, we send the castings with all openings and bolt holes properly cut to facilitate the work of assembling everything.

Convenience Think of it: A complete heating plant that costs no more than a good stove and yet heats your entire home evenly with less trouble and fuel—no trailing up the rooms of your home with tubes and fuel as everything is in the basement where it belongs.

Special Features With exception of grate bars we guarantee all furnace castings against defects for workmanship for five years. It has straight side fire pot to allow full grate area, other make furnaces having tapering fire pots permit less grate area and cannot be as efficient. Interchangeable grate bars. Furnace body properly proportional throughout. Register box allows for installation in basements having depth six to eight feet.

Furnace No.	3A-118	3A-120	3A-122	3A-124	3A-127
Fire Pot, Diameter	18"	20"	22"	24"	27"
Grate, Diameter	18"	20"	22"	24"	27"
Heating Capacity	12,000	10,000	17,000	10,000	40,000
Size of Register	26x26	36x30	36x30	44x34	36x36
Size of Smoke Pipe	8"	8"	8"	8"	8"
Casing, Diameter	40"	44"	48"	52"	60"
Size of Feed Door	12x15	12x14	12x14	12x13	12x14
Shipping Weight	1000	1100	1250	1700	1500
Price	\$74.50	\$81.25	\$93.60	\$107.20	\$126.75

PRICES ON THIS PAGE NET F. O. B. FACTORY



Bath Tub

White porcelain enameled lined and finished either 5 feet or 5 1/2 feet long as desired. Is 30 inches wide and 17 inches deep. Has 3 inch roll rim and measures 22 1/2 inches from floor to rim, nickel plated waste and supply as shown, double bath-cock, stopper and chain. 3A-162.....\$32.99



Closet Combination

Has one-piece lined toilet. Bowl is vitreous porcelain of siphon washdown type. Complete with nickel plated elbow, supply pipe and screws. 3A-200.....\$26.30



Kitchen Sink

Our 18x24 one-piece cast sink with roll rim. Enameled in white porcelain highly glazed. Supported on porcelain hangers. Complete with nickel plated fittings as shown. 3A-364.....\$13.50
Extra for trim to floor......90



Lavatory

A 17 x 18 white enamel finished lavatory fitted with nickel plated compression faucets, having china handles marked "Hot" and "Cold." Also trim as illustrated. 3A-272.....\$12.65
Extra for trim to floor......85



Range Boiler

Our 10 gallon galvanized range boiler, with steel tube and couplings. 3A-1122 Standard Grade.....\$12.35
3A-1123 Extra Heavy Grade..... 14.10



COMPLETE CHEMICAL CLOSET \$5.45

Place it in a spare bedroom, clothes closet—any convenient place; simply make sure that the vent pipe is arranged to provide good draft. Can be set in in less than half an hour. The Chemical we supply is exceedingly strong and quick acting; dissolves all acids and makes the closet odorless, sanitary and convenient. **Complete Outfit Includes:** Six feet of pipe, two boxes wall-board, toilet paper holder and paper of Chemical. 3A-21 Aladdin Chemical Closet. Weights 30 lbs.



Gray Enamel Finish

PRICES ON HEATING AND WIRING FOR HOMES IN THIS CATALOG

Home	Wiring	SPECIFICATIONS		Home	Wiring	Aladdin Furnace	Hot Air Pipe System
		Aladdin Furnace	Hot Air Pipe System				
Emerald	\$23.70	\$74.50	\$156.10	Victory Y	\$26.35	\$74.50	\$126.75
Columbia No. 1	15.89	74.50	105.00	Victory Z	18.20	74.50	133.40
Columbia No. 2	15.89	74.50	105.00	Potomac L	19.65	74.50	122.50
Columbia No. 3	16.09	74.50	107.30	Potomac M	18.15	74.50	119.65
Columbia No. 4	16.25	74.50	108.90	Potomac Q	20.35	74.50	122.50
Columbia No. 5	16.10	74.50	107.65	Corral Gables No. 1	21.00	74.50	116.35
Columbia No. 6	16.10	74.50	107.65	Corral Gables No. 2	22.85	74.50	129.45
Columbia No. 8	16.00	74.50	106.40	Corral Gables No. 3	18.20	74.50	117.40
Columbia No. 9	16.45	74.50	106.00	Liberty J	23.80	74.50	133.50
Columbia No. 10	16.45	74.50	106.00	Liberty K	20.15	74.50	139.80
Bluebird No. 1	19.40	74.50	120.35	Welland	25.90	74.50	158.60
Bluebird No. 2	18.80	74.50	121.60	Adams No. 1	24.70	74.50	169.20
Bluebird No. 3	18.35	74.50	120.35	Adams No. 2	26.95	74.50	176.90
Cadars No. 1	18.70	74.50	108.75	Pilgrim	24.70	74.50	169.20
Cadars No. 3	19.45	74.50	111.20	Capitol	33.80	none rec.	239.10
Cadars No. 4	16.85	74.50	106.65	Marigold A	22.80	74.50	136.50
Cadars No. 5	17.60	74.50	108.25	Marigold B	21.20	74.50	136.50
Victory A	19.80	74.50	131.90	Mayflower No. 1	15.30	74.50	96.75
Victory B	18.15	74.50	125.40	Mayflower No. 2	13.30	74.50	96.75
Victory W	19.10	74.50	130.50	Mayflower No. 3	13.30	74.50	96.75
Victory X	21.20	74.50	138.10	Mayflower No. 4	10.95	74.50	92.60

FACTS ABOUT

The Aladdin Plan

THE Aladdin Plan of home building has been in successful operation for twenty years.

The whole purpose of the plan is to help builders of modest homes.

Its first object and principal benefit, is to save money for builders of modest homes.

The Aladdin Plan has saved \$200, \$300, \$500, \$800—\$1200 and even more money on the individual homes of thousands of home builders.

Our home builder customers write us after finishing their homes and tell us these things.

They tell us how we helped them to buy their materials for less than their local lumber dealer would sell them.

They tell us how much better our lumber is than they could get from their local dealers.

They tell us how strong their homes are, how warm they are, how convenient the room arrangements are, and how pretty they look when finished.



HOME OFFICES THE ALADDIN CO.

The Aladdin Company

And these customers of ours tell us how pleased they are with all their dealings with us.

And, really, we are most pleased when they say this, for the Aladdin people are human. We are just ordinary people whose life work, life experiences are devoted to home building, devoted to making home building simpler, more economical, easier and more pleasant for our customers.

Every stockholder in The Aladdin Company is a worker in the company. We are all interested in every customer and we are all interested in knowing that every customer is satisfied.

Aladdin Homes are the original and first ever sold where the materials were all prepared in the mill, cut to fit and ready to be nailed in place when the house is being built. The ready-cut house industry was founded by Aladdin—by W. J. and O. E. Sovereign and the present workers, in The Aladdin Company.

ALADDIN'S \$100,000.00 GUARANTY FUND



THE FIRST NATIONAL BANK

Chicago, Ill.

JANUARY 1, 1916.

TO ALADDIN CUSTOMERS:

Our partners throughout the world have been delighted with us by the Aladdin Company. This is held by us as a guaranty and certificate of quality like follows:

This must still be held in the name of the Aladdin Company if you find any error of your judgment that the materials are not exactly as represented. It is understood that you will notify this bank within ten days after arrival of materials at your station, and if the same time notify the Aladdin Company, if you desire to have your money returned.

This One Hundred Thousand Dollars guaranty fund is deposited with us under this arrangement with Henry Drexel, Attorney, National Trust Company, Chicago further secured in this book.

FIRST NATIONAL BANK,

By *W. J. Sovereign*
THE ALADDIN COMPANY

Tens of Thousands of American families are living in Aladdin houses. For twenty years this organization has devoted its energies, its brains and its experience to making home building simpler, easier and less expensive. The Savings Aladdin offers you, the Service Aladdin offers you and the Safety Aladdin offers you are completely explained on pages 20, 21, 22 and 23 of this book.

The ALADDIN Guaranty: Satisfaction, or your money back, is the soundest guaranty ever written.

When this guaranty is backed by a company whose assets run into the millions you are assured of *absolute safety* in all your dealings. Aladdin guarantees the quantity and quality of all materials and their safe arrival at destination. The Aladdin Company guarantees your satisfaction or your money back in every transaction with us.

Twenty Years of Experience: The houses shown in this book are the best we have planned in our twenty years' experience.

We have learned from furnishing homes for thousands of families, enough to make a city of a quarter of a million population. Each one has more different floor plan arrangements to suit your family and your tastes. We have designed these houses and priced them so that you can get into a home at the lowest possible cost, or you can have added values like porches, larder cabinets and other luxuries and necessities. You can buy as much or as little as you like. We want to satisfy you exactly.

How ALADDIN Saves You Money

Now let us tell you how we save you money.

The ready-cut plan avoids wasting lumber when building—saves about \$18.00 out of every \$100.00 worth of lumber ordinarily used in building your home.

Nine-tenths of all lumber coming out of the forests are in 8-foot, 10-foot, 12-foot, 14-foot and 16-foot lengths. When you want to use other lengths, you have to pay more money for the same quantity and quality. Aladdin designs homes to use standard lengths. That's the economy of standard parts and that's the same kind of manufacturing economy that enables automobiles to be manufactured so cheaply. And that is what enables us to put in higher quality at lower prices.

Rapid, automatic machinery handles this lumber so swiftly, so accurately and so perfectly, that one man at a machine in our mills will cut as much as nearly a hundred carpenters can in the same length of time. And you get the benefit of this saving.

The Aladdin system of cutting the lumber in the mill saves about \$30.00 out of every \$100.00 worth of carpenter labor—as against the old system of measure, try, cut and fit on the job.

Twenty Feet of Lumber from a Sixteen-Foot Board

Think of taking a 6-inch board sixteen feet long and getting twenty feet of 6-inch board out of it!

Think of applying this system of saving throughout all the lumber used in building your home!

Think of your own good money it saves! Think of your money this system saves, for your house is priced to you in exactly the number of feet of lumber going into it.

To eliminate waste by scientific planning, designing and cutting of lumber is to save your money from the waste pile.

W. J. Sovereign, president of The Aladdin Company, conceived this tremendous thought, originated, perfected, and established the system.

The principle has been so thoroughly established through the success of The Aladdin Company, that it is now accepted and approved by lumbermen, contractors, engineers and scientists.

Sturdy, Honest Lumber Makes Sturdy, Honest Homes

furnish beautiful, clear lumber for the doors and interior woodwork. And ever since, it has devoted its efforts to improving its houses. It feels and believes that the modest home should have as good quality as the biggest homes.



The beautiful, velvety-grained Oregon fir and yellow pine used in Aladdin homes is the finest coming out of the forests. It takes the handsomest stain, oils and varnish and holds the coloring permanently.

The points furnished are standard high quality—the beautiful brushed brass hardware and locksets finish off the woodwork attractively. Our roofing is made by one of the largest companies in the country and is of the highest quality. Pleasure and pride can't help but come to you when you know how good a home you have built, and especially when you have secured all these good things and saved a lot of money too.

Some people will tell you not to build an Aladdin house. But most of them will be people who will lose some profit they expected to make out of you if you do. They will be people who want to sell you something, who will want to get your money. They will never be people who have built Aladdin homes.

How Lumber is Cut to Fit.

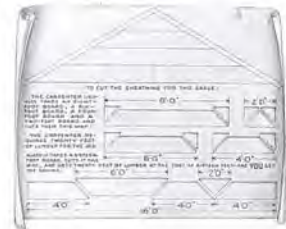
The illustration at the right demonstrates the great saving and the simple work erecting an Aladdin home. The material is cut to fit in our mills and numbered according to the blueprints which explain every step of the erection. The pieces fit together perfectly. And you save at least 18 percent waste lumber besides 30 percent to 40 percent of the labor of erection. Aladdin is the originator of the Ready-Cut System of construction and has saved thousands of builders from \$100 to \$800 on their homes.



ALADDIN Homes Not Portable

And please remember, always remember, that there is nothing "portable," nothing "sectional," nothing "fabricated" about an Aladdin home. You can't take an Aladdin house down after it is built. It is designed, constructed and built just like the best architect-designed, contractor-built houses in your neighborhood. Aladdin houses are sturdy, warm and strong—real year-round homes. They have been built and lived in for years in Maine, North Dakota, Michigan, Canada—and in Alaska. The President, the General Manager and most of the executives of The Aladdin Company have been living in Aladdin homes for years.

Aladdin houses are designed to use standard lengths of lumber cut from standard lengths of logs as they come out of the forest. This saves waste of lumber; saves the \$18.00 out of every \$100.00 we spoke of before.



From the Pyramids to the Woolworth Building

point to the Pyramids of Egypt, refer to Solomon's Temple as described in the Bible, or inspect Washington Monument,

or the 57-story Woolworth Building in New York City. You will find that each was prepared, erected and completed by the Read-Cut system. But it remained for The Aladdin Company to first apply the system to your benefit in the building of a home. And thousands of American families scattered over this broad land will testify to its economy and practical success.



The pyramids aren't portable, the Woolworth Building is not portable, nor are Aladdin houses portable.

If you attempt to tear apart, or dismantle an Aladdin house, the most expert contractor could not tell it from any first-class frame dwelling because *there is no difference.*

Build It Yourself We usually advise our customers to have a carpenter, if possible, but we do say that any sensible man can build an Aladdin home if he follows our simple, plain instructions and detailed blueprints of erection.

Every piece of material is cut to fit, with a few exceptions. And these pieces are marked and numbered so that you know just where every piece goes when you look at the pictures and photographs we supply.

Of course if you build your own house, like so many other Aladdin customers have, you, too, will save money you would have to pay a carpenter.

"It's just common horse sense," wrote a customer, after he had moved into his new Aladdin. This man was so proud because he built his Aladdin himself—and he was not a carpenter either.

ALADDIN Customers If you want to ask advice, it is only fair to yourself, and fair to us, to ask people who know about Aladdin houses. Can a man who hasn't built an Aladdin house know as much about it, or about us, as a man who has dealt with us? We will give you the names and addresses of many customers to write

to, or call on. We wouldn't do that if we didn't know they saved money, would we? All right then, if a dealer or a contractor tells you not to build an Aladdin house, ask him for his reasons and investigate these reasons by talking with a man who has built an Aladdin house. Don't take anybody's advice, who has not actually built an Aladdin house. Get your facts from people who know.

This Catalog Our Only Salesman With this catalog, you are able to keep the profits in your own pocket that you ordinarily pay to your local dealers. Because we do not sell through dealers, they can't add their several hundred dollar profits to the goods you buy from us. You keep this money yourself.

When your dealer says, "Don't buy your lumber out of town," ask him where he buys the lumber he wants to sell you.

You see, he buys his lumber up here and the only money that stays in your town is the dealer's profit. Wouldn't you rather have it in your pocket than in his?

This catalog makes possible this saving—and many others.

Avoid Profits of The Middleman The Aladdin Company buys immense quantities of lumber from the forests, getting absolutely the lowest prices. You, therefore, buy direct, without any middlemen to add their profit to the price of your lumber, millwork and hardware.

Is it any wonder our customers write us and tell us they saved \$100, \$500, \$800 and more, when we are able to avoid all these wastes that exist for the person who builds the old way?

For years many great corporations have been buying and building Aladdin houses for their employees. The United States Government and many states and cities have been our customers. These facts all prove that there is economy and satisfaction for our customers.



Hay County Savings Bank

Day City, Michigan

December 1st, 1913.

To Aladdin Customers:

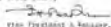
We are pleased to testify to our confidence in the Aladdin Company, and to assure you that our confidence you extend (this etc) is thoroughly justified.

The men behind this organization who are perfectly responsible financially and otherwise, are all personally known to us, as is their integrity and honest business policy.

This company originated, perfected and established the Read-Cut system of construction and is the producer as well as the largest manufacturer of houses that we know of.

You may have full confidence that the representatives of this company will be fully lived up to.

Very truly yours,


The President & Manager.

SPECIAL SUMMER COTTAGE CATALOG

A separate booklet is ready to be mailed to you, if you are interested in summer cottages. Aladdin Summer Cottages are single walled, exposed studding, single matched ceiling partitions, with rooms open to the rafters.

Masonry Chimneys and Fire Places

Chimneys can be located anywhere in the house you like, for we do not cut the materials for these openings. If you do not want the fireplace which may be shown in the photograph, you need not build it. Of course, any excavation work, and the foundation work must be done on the ground. Brick, stone and cement can be had in your locality as cheaply as we could furnish it. We furnish you a foundation plan to tell you how to proceed to build the kind of foundation you want.

Painting You receive paint for painting the outside, two coats and stain and varnish for interior trim. You may choose natural oil and varnish, light or dark oak stain and varnish or mahogany stain and varnish. These materials are standard high quality and make a beautifully finished job.

Shingled Walls Shingled walls cannot be furnished for single construction. At the double construction price, we will furnish cedar shingles for the side walls instead of siding, without additional charge, which includes all other features called for in double construction.

Stucco Walls Sheathing and lath for stucco side walls will be furnished instead of siding for the side walls without additional charge.

Blue Prints Complete blue prints showing every step of erection are furnished with every order so that even though you may not be a carpenter, you will know just how to erect your home. Any of these houses will be reversed without additional charge. The opening for fireplaces shown in some of the photographs is not cut, so that the chimney may be omitted or its location changed from where it is shown in the picture.

Freight Exception We pay the railroad freight on all our houses to all states, except the following: Texas, Louisiana, Oklahoma, New Mexico, Arkansas, Arizona, Nebraska, Colorado, North and South Dakota, and Kansas. Write us for freight quotations on shipments to above states.

All designs shown in this catalog are priced in both single and double construction and the porches are quoted separately. We have found from our twenty years experience in the manufacture of ready-cut houses, that a great many people desire to erect the house first and then build the porch on at some future date. We have also found that some desire single construction and some double construction.

Reversing Plans

Reversing Plans means changing the rooms to the opposite sides of the house. That is, all rooms now on the right hand side would be on the left hand side and all rooms now on the left would be on the right hand side. This is sometimes desirable, depending on location of your lot and direction the house will face. We will furnish all materials, so house can be erected reversed, without charge. Kindly mention when ordering if this change is desired.



Terms and References

Aladdin houses are sold for cash only. We require the full price of the house to be sent with the order to obtain the prices quoted. If, however, you prefer to send only twenty-five per cent or one-quarter of the price, with the order and pay the balance upon the arrival of the shipment, we will accept your order on this basis, providing you add \$10.00 to the price quoted to pay for expenses of shipping the house in this way.

NOTE—This catalog supersedes all previous catalogs, and all prices herein quoted are subject to revision April 5th, 1926, July 5th, 1926, and September 5th, 1926.

References Any bank in the United States, Bradstreet's or Dun's commercial agencies, National City Bank of New York with branches in all principal cities; First National Bank, Bay City; The Murchison National Bank, Wilmington, North Carolina; Northwestern National Bank, Portland, Oregon; First National Bank, Hattiesburg, Mississippi, or any city official or citizen of Bay City and our customers.

THE ALADDIN COMPANY

General Offices and Mills:
BAY CITY, MICHIGAN

Branch Offices and Mills:
Wilmington, N. C.
Portland, Oregon
Toronto, Ont.

Write nearest Mill

Copyright 1925
THE ALADDIN CO.
BAY CITY, MICHIGAN

Circle Address
"ALADDIN"
W. J. Cade

ALADDIN Money-Saving GARAGES

The Aladdin garages shown below cover the demand for 95 per cent of all garages built. Aladdin garages are staunchly built of high grade materials. Lumber is all cut to fit. A couple of days' time will erect and finish one. Prices quoted are astonishingly low and include freight paid to your railroad station.

The Lincoln

An attractive two-car garage, having four swinging doors.

- Lincoln No. 1—20 ft. wide, 18 ft. deep—
\$220 Freight Paid
 Lincoln No. 2—20 ft. wide, 20 ft. deep—
\$231 Freight Paid

The Cadillac

Same design as The Lincoln, except that it is 18 ft. wide instead of 20.

- Cadillac No. 1—18 ft. wide, 16 ft. deep—
\$193 Freight Paid
 Cadillac No. 2—18 ft. wide, 18 ft. deep—
\$204 Freight Paid
 Cadillac No. 3—18 ft. wide, 20 ft. deep—
\$218 Freight Paid



The Studebaker

The Studebaker will take the largest car on the market with ample room at sides for storage and working.

- Studebaker No. 1—12 ft. wide, 16 ft. deep—
\$133 Freight Paid
 Studebaker No. 2—12 ft. wide, 18 ft. deep—
\$143 Freight Paid
 Studebaker No. 3—12 ft. wide, 20 ft. deep—
\$153 Freight Paid

The Ford

The Ford is made in three standard sizes. The 8x14 size being the smallest and will admit a Ford touring car with top either up or down.

- Ford No. 1—8 ft. wide, 14 ft. deep, \$ 87 Freight Paid
 Ford No. 2—10 ft. wide, 16 ft. deep, . . . \$110 Freight Paid
 Ford No. 3—10 ft. wide, 18 ft. deep, . . . \$119 Freight Paid



Specifications for Aladdin Garages: Sills, 4 x 4 in.; studding, 2 x 4 in., 24 in. centers; drop siding for side walls; rafters, 2 x 4 in., 24 in. on centers; roof, one-quarter pitch; exposed eaves, one foot projection. Roof sheathing, laid tight. Best quality green slate surfaced roofing for roof. Hardware, nails and paint for two coats on exterior. Materials ready-cut and complete blue prints showing every step of erection. All garages shown are furnished without floors, as practically all auto owners prefer to build floor of concrete or cinders.

Summer Cottages from \$180 to \$745 And We Pay The Freight



The summer cottage illustrated is one of our most popular designs known as The Ocean Park and is manufactured in three sizes. The 18x26 foot size sells for \$423, the 18x30 foot size for \$473 and the 20x36 foot size for \$596. Remember we pay the freight.

Aladdin Summer Cottages are single walled, exposed studding, single matched ceiling partitions, with rooms open to the rafters.

A separate booklet is ready to be mailed to you, if you are interested in summer cottages.

THE ALADDIN COMPANY

Offices and Mills, Bay City, Michigan,
 Wilmington, N. Car., Portland, Ore., Toronto, Ont.