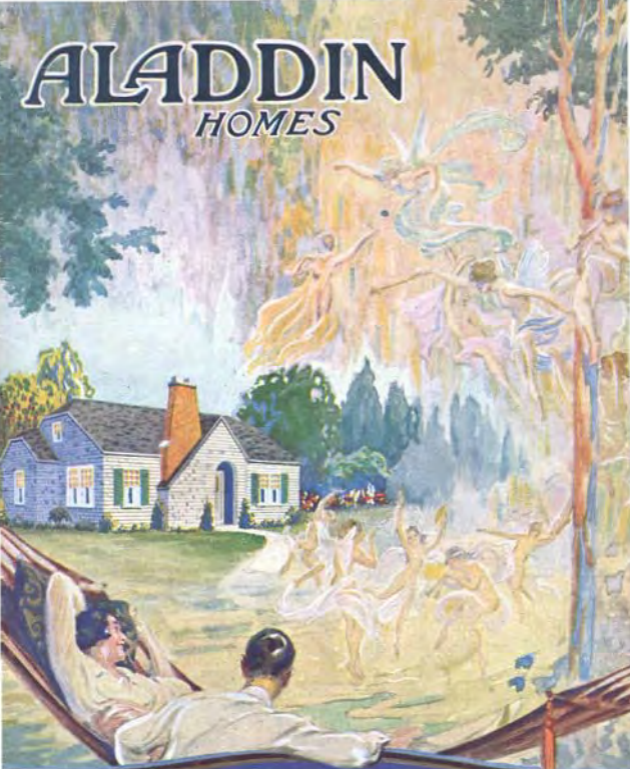


# ALADDIN

HOMES



The Golden Rule in Home Building  
presented by the Aladdin Company  
to

# ALADDIN'S \$100,000.00 GUARANTY BOND



W. L. STEPHENS, President  
A. J. HARRISON, Vice President  
C. G. BROWN, Cashier  
WALTER W. BRADY, Trust Officer & Manager

A. J. HARRISON, President  
A. J. HARRISON, Vice President  
C. G. BROWN, Cashier  
WALTER W. BRADY, Trust Officer & Manager

ORGANIZED 1884

INCORPORATED

## THE FIRST NATIONAL BANK

INCORPORATED IN MICHIGAN

RAY CITY, MICH.

January 2, 1929

To Aladdin Customers:

One Hundred Thousand Dollars has been deposited with us by the Aladdin Company. This is held by us as a guaranty and safe-guard to protect you as follows:

This bank will pay back to you any and all moneys you send to the Aladdin Company if you find upon arrival of your shipment that the materials are not exactly as represented. It is understood that you will notify this bank within two days after arrival of materials at your station, and at the same time notify the Aladdin Company, if you desire to have your money returned.

This One Hundred Thousand Dollars guaranty fund is deposited with us under this agreement until January first, Nineteen Hundred Twenty Nine, unless further renewed on that date.

FIRST NATIONAL BANK

By J. H. Harrison  
Vice President & Mgr.

### SOLD BY THE GOLDEN RULE





*Interior of Bluebird—See page 14*

# A few facts about ALADDIN

**This is the Twenty-second Year  
of Aladdin Success**

the business shows a tremendous increase in the volume and number of houses sold. You know that this wonderful growth would be impossible for any manufacturing institution, or any business house, unless customers became friends—unless real service was rendered—honest value, square business methods and integrity prevailed.

**A**LADDIN Read-Cut Houses—The Aladdin System of Construction—may be new to you, but the system was planned and put in operation over two decades ago. Its merits, and wonderful simplicity, were immediately recognized by the American public. The result is that every year the history of

*The United States Government has used The Aladdin Company's standard read-cut specifications in advertising for bids for the construction of houses on government projects. This is not only official endorsement of the Read-Cut system of construction, but recognition of the merit of The Aladdin Company's specifications.*

## **Integrity of the Aladdin Policy**

Integrity means *moral soundness*; it means *honesty*; it means *freedom from corrupting influence or practice*; it means *strictness in the fulfilment of contracts, uprightness, square dealing*. The Aladdin policy of doing business endeavors to live up to the strictest meaning of *Integrity*. The customer must be well served—must be satisfied—must be pleased—*must be a friend*. The *Golden Rule* must govern every transaction. You who read this are entitled to know the truth of the above statement. Well, then, demand of us that proof in whatever way you wish. Shall we refer you to bankers, congressmen, postmasters, City, State or National Government officials, or, better than all shall we refer you to *customers who have tested our integrity*, customers in your own neighborhood? The proof is yours for the asking.

## **The Aladdin System of Construction is Built on This Principle:**

*Modern power-driven machines can do BETTER work at a lower cost than hand labor. Then every bit of work that CAN be done by machine SHOULD be so done.* The steel worker with a little hack-saw trying to cut and fit the steel girders of the modern skyscrapers should be no more out of place than the modern carpenter cutting sills, joists, and rafters. The skyscraper framework is cut to fit by machines in the steel mills, marked and numbered ready for erection. The lumber in the Aladdin house is cut to fit by machines in the Aladdin mills, marked and numbered ready for erection. The steel system is over thirty years old—the Aladdin system over twenty years old.





Interior  
The CEDARS

What do I receive when I  
buy an ALADDIN house?

You Receive:

**Knotless**—2½" Face  
Fir flooring.

**Knotless**—Two Panel  
Doors.

**Knotless**—Bevel  
Siding.

**Knotless**—Two Mem-  
ber Base Board.

**Knotless**—Outside  
Finish.

**Knotless**—Inside  
Stairs.

**Knotless**—Two Mem-  
ber Inside Trim.

**Knotless**—Porch  
Steps.

**Knotless**—Window  
Frames.

**Knotless**—Porch  
Columns.

**Knotless**—Door  
Frames.

**Knotless**—Porch  
Railing.

**Knotless**—Window  
Sash.

**Knotless**—Porch  
Flooring.

**You Receive** high quality window glass not separate in a box but placed and puttied into the sash. The sash are ready to place in the window frames.

**You Receive** your doors mortised for the very attractive lock sets we furnish with all houses.

**You Receive** the very best read-mixed paint manufactured by the largest paint company in the country, and guaranteed by both them and us.

**You Receive** green slate surfaced roofing or shingles that will protect your home from fire and weather.

**You Receive** the same high quality materials throughout, Aladdin **CERTIFIED Lumber**, whether you buy one of the largest or one of the smallest houses we manufacture. We only carry one quality and that is the best.

**You Receive** materials manufactured ready for erection that will enable you to erect your house at a big saving in labor cost and time of erection—

**You Receive** your house from The Aladdin Company, the originators and largest manufacturers of **Ready-Cut** houses in this country.

**You Receive** the assurance and guaranty of The Aladdin Company, a two million dollar concern, that you will be more than pleased with the quality of all the materials and that there will be sufficient to complete the house according to our specifications.

**Will Your New Home Be Knotless!**



The Cedars :: A Real Beauty :: 5 Plans :: Price **\$598** And We Pay The Freight



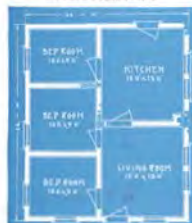
**T**HE CEDARS is a beautiful bungalow, marvelously priced and remarkably designed. The price in single construction, specifications for which are given below, is **\$598** which includes outside walls furnished with siding instead of shingles. Shingles will be furnished for walls, if desired, without extra cost when double construction is ordered. See picture of interior on page 4.

The price of the Cedars in double construction is **\$715** and the specifications are the same as for single construction except that the following materials are added: Sub-floor sheathing under finish floor with building paper to be placed between the two floors, outside wall sheathing under bevel siding or shingles with building paper to be placed between, sash weights, cord, pulleys and sash locks for all double sliding windows, additional nails for the above extra materials. Porch shown in picture may be had by adding **\$99** to the price. Size of porch 16 feet by 8 feet.

Cedars Plan No. 1



Cedars Plan No. 4



Specifications, The Cedars

**CEDARS—(Single Construction.)** Size 22x26. Sub-bath built-up gilder, 2x6-inch wall plates, 2x8-inch joists on 16-inch centers including bay joists. Cedar 2x4-inch face banded and grooved flooring, 2x4-inch wall and partition studs on 16-inch centers. Lath for lining all walls and ceilings. Clear A. pine wood bevel siding for outside walls. Clear outside finish. 2x4-inch ceiling joists on 16-inch centers. 2x4 rafters on 24-inch centers. Roof sheathing laid tight. Best quality green slate surface roofing. Check led windows and frames, size of glass in each sash 26x34 inches. Bath room has swinging egress, size of glass 18x24 inches. Clear interior trim. Clear 9-inch two member baseboard. Door frames and doors, size 2 feet 8 inches by 6 feet 8 inches, highest quality fir. Front and rear doors upper half glass. Casid sashes furnished where shown in plans. Two coats of paint for exterior. Stain and wax for interior trim and doors. All nails, standard locksets, hinges, double acting floor hinges and spring window bolts to standard home. Details of siding 3 feet. Wood 1/4 inch. Beyond window 1 foot projection. Plans revised without charge, see page 47.

Cedars Plan No. 5



Cedars Plan No. 3



Cedars Plan No. 6





**H**ERE is a home that for convenience, modern designing compactness and economy cannot be surpassed—The Maidstone. Singular taste is manifest in the planning and the finishing touches. The entrance with well proportioned hood over front door breathes hospitality. The green blinds offer a pretty touch to the front of the house. Dormer window on front roof adds grace to the whole.

Four plans are offered for your choice, each with its own special features and advantages to meet the needs of different families. Three two bed room plans, and one with three bed rooms are shown, while one plan has extra stairs off the kitchen. A Maidie's CERTIFIED lumber insures highest quality and sturdy construction for this home, which will be found warm and snug in coldest winter. The house can be built with terraced front lawn as shown, or set upon higher foundation.

The price of the Maidstone in single construction, specifications for which are given below, is \$815. The price in double construction is \$1615 and the specifications are the same as below except that the following materials are added: Sub-floor sheathing under finished floor with building paper between two floors, outside wall sheathing under bevel siding with building paper between, sash weights, cord, pulleys and locks for all double sliding windows and additional sills for this extra material.

**Maidstone Plan No. 1**



**Maidstone Plan No. 3**



**Specifications The Maidstone**

**Single Construction:** Size 22 by 28 feet. 6x6-inch built-up girder, 2x6-inch wall plates, 2x6-inch floor joists on 16-inch centers, bridging for joists, Clear 2 1/2-inch face tongue and groove flooring, 2x4-inch wall and partition studding on 16-inch centers. Lath for lining all walls and ceilings. Clear A redwood bevel siding for outside walls. Clear outside finish. 2x6-inch ceiling joists on 16-inch centers, 2x6-inch rafters on 24-inch centers. Roof sheathing laid tight. Best quality variegated clear surfaced hexagonal strip shingles. Check-rail windows and frames, size of glass in each sash 26x24 inches. Kitchen supplied with check rail window, size of glass in each sash 26x16 inches. All upper sash divided lights. Clear interior trim. Clear 6-inch two member lumberboard of attractive design. Door frames and doors size 2 feet 8 inches by 6 feet 8 inches, highest quality fir. Case openings furnished where shown in plans. French divided light front door, rear door upper half glass. Front entrance hood included in price. Also blinds as shown in illustration. Other stairs furnished when shown in plans. Two coats of paint for exterior. Sash and varnish for interior trim and doors. All sills, mortised locksets, hinges, double acting floor hinges and spring window bolts to complete house. Height of ceiling 8 feet. Main roof 1/4 pitch. Eaved roof 1 foot projection. Plans received without charge, see page 47.

**Maidstone Plan No. 2**



**Maidstone Plan No. 4**





**S**IMPLICITY and economy are the keynotes of the Virginia which is our latest design in Modern Colonial Architecture. The Virginia presents a simple cozy appearance that tells us it is more than a place to live—it is a Home.

For just a few minutes refer to the plan arrangements shown below. You will find that both plans are alike in general arrangement, but one contains three bedrooms and the other two bedrooms allowing you to make your selection according to your requirements.

The bedrooms and bathroom are separated from the living quarters. Large generous closets closets are provided for each bedroom which adds a very valuable feature to the home.

Both plans contain a large well lighted living room which is the outstanding feature of the modern home of today. The dining room and kitchen are also in keeping as to size, with the balance of the house and in winning to both arrangements you will find that they cannot be improved upon. Our designers have used every available inch of floor space in these plans which means economy to the builder.

The Virginia is priced at \$997 for Single Construction, specifications for which are shown at the bottom of the page and the price for Double Construction is \$1135. Double Construction specifications are the same as for Single Construction except that the following materials are added: 2nd-floor sheathing under finish floor with building paper to place between the two floors, outside wall sheathing under bevel siding with building paper to place between, such weights, sand, pulleys and sash locks for all double sliding windows and additional nails for the above extra materials.

### Specifications The Virginia

**Single Construction.** Size 30 by 34 feet. 6x6-inch built-up girder, 2x6 wall plates, 2x8-inch floor joists on 16-inch centers, bracing for joists. Clear 2 1/2-inch face tongued and grooved flooring. 2 1/4-inch wall and partition studs on 16-inch centers. Lath for lining all walls and ceilings. Clear A reduced level siding for outside walls. Clear outside finish. 2x4-inch ceiling joists on 16-inch centers. 2x4-inch rafters on 24-inch centers. Roof sheathing laid tight. Best quality variegated slate surfaced hexagonal strip shingles. Check rail windows and frames, size of glass in each sash 26 2/4 inches, upper sash divided lights. Kitchen and bathroom supplied with check rail window, size of glass in each sash 26x16 inches. Clear interior trim. Clear 6-inch two member baseboard of attractive design. Door frames and doors size 2 feet 8 inches by 6 feet 8 inches, highest quality fir. Ceased ceilings (finished) where shown in plans. French divided light front door. Rear door upper half glass. Front entrance hood included in price also binds as shown in illustration. Ceiling stairs. Two coats of paint for exterior. Stain and varnish for interior trim and doors. All nails, mortised locks, hinges, double acting floor hinges and spring window bolts to complete home. Height of ceiling 8 feet. Roof 1/2 pitch. Plans reversed without charge, see page 47.



Virginia Plan No. 1



Virginia Plan No. 2





**T**HIS pretty cottage offers a chance to start home ownership on the very smallest of savings. Later successes may come, enabling a larger and more expensive home. But the Columbia is the starting point, conserving expenses, inspiring thrift, and saving rent.

You may choose any one of the nine floor plans shown. They are all priced alike—\$487 and we pay the freight. The Columbia is size 18x26 feet. Specifications: 6x6 built-up girder, 2x6 wall plates, 2x6 floor joists on 16-inch centers. Studding and ceiling joists are of splendid No. 1 2x4 stock and on 16-inch centers. Rafters of same stock on 24-inch centers. Finest grade close grained, clear tongued and grooved flooring with 2 3/4-inch face, supplied for every house. Beautiful Clear A—Redwood bevel siding offers indestructible protection to the home, while the exposed finish lumber such as corner boards, porch work, window and door casings are free from any defects such as knots, etc. No. 1 air-dried lath are supplied for all walls and ceilings. Sound roof sheathing is to be laid tight. Roof is covered with best grade green slate surfaced roofing. Double sliding sash windows, size of glass in each sash 26x24 inches, for all rooms except bathroom, where swinging casement with glass size 18x24 is furnished. Interior woodwork is made of clear, beautiful grained stock, while all inside doors are of handsome two-panel design, size 2 feet 8 inches by 6 feet 8 inches. Glass in upper half of front and rear doors. Clear 6-inch two-member base boards. Cellar stairs furnished when shown in plans. Highest grade paint manufactured is supplied for two coats for outside while stain and varnish is furnished for the interior trim and doors. This quality insures perfect protection to materials and most attractive finish. Mortised locksets with brushed brass escutcheons in attractive designs come for each door in the house, except dining room door which is furnished with double acting floor hinge. Spring

*(Continued on next page)*



The porch shown in the above picture of the Columbia will be furnished for \$55. It is 14x6 feet in size and the price includes all materials.

**Columbia No. 1**



**Columbia No. 2**



**Columbia No. 9**







The porch size 14x6 feet shown in the picture above may be had for \$47. The price includes a pair of 4-foot wide steps.



Picture of the Columbia with inset porch, as shown in floor plan number 3 and 8. No additional charge for inset porch.

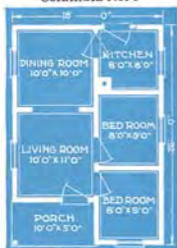
window bolts for all windows together with all nails necessary for constructing house are included. The height of ceilings is eight feet and the roof has one quarter pitch. Exposed eaves are of one foot projection. The foregoing is an accurate description of the Columbia as furnished for \$487 in Single Construction. Double Construction is identical except that following materials are added: Outside wall sheathing under bevel siding with building paper between; sub-floor sheathing under finish floor with building paper between two floors. Sash weights, sash pulleys, and sash locks for all double sliding windows; and additional nails for the above materials. Price of any Columbia in Double Construction is \$569. Plans reversed without charge. See page 47.

The porch and steps shown in the large picture at top of page 2 will be furnished for \$86. It is 16x6 feet in size.

Interior view shown at right is of Columbia No. 6 looking from rear of dining room into living room.



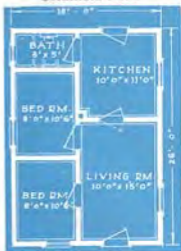
Columbia No. 3



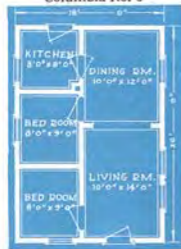
Columbia No. 4



Columbia No. 5



Columbia No. 6



Columbia No. 8



Columbia No. 10



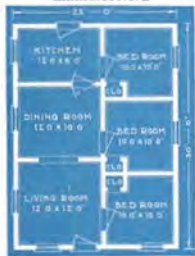


THE ELMHURST is a new Aladdin design offered because of the large demand for a home 22x30 feet in size. It is presented in four excellent floor plans. Everyone who builds the Elmhurst will be more than pleased, not only with the interior arrangement, but also with the exterior appearance. The pergola type porch is a distinctive feature. The porch has a tight weatherproof roof. Aladdin

Elmhurst No. 1



Elmhurst No. 2



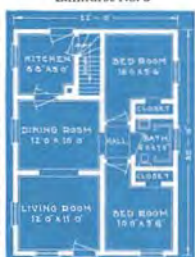
Certified Lumber insures top notch quality!

The price in single construction, specifications for which are given below, is \$696. The price in double construction is \$897 and the specifications are the same as for single construction except that the following materials are added: Sub-floor sheathing under finish floor with building paper to be placed between the two floors, outside wall sheathing under bevel siding with building paper to be placed between, sash weights, cord, pulleys and sash locks for all double sliding windows, additional nails for the above extra materials. Porch shown in picture may be had by adding \$88 to the price. Size of porch 14 feet by 8 feet.

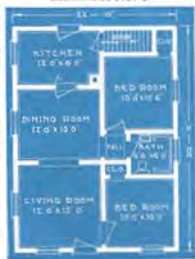
**Specifications, The Elmhurst**

ELMHURST — (Single Construction.) Size 22x30. 6x6-inch built-up girder, 2x6 wall plates, 2x8-inch joists on 16-inch centers, bridging for joists. Clear 7 1/2-inch face tongue and groove flooring, 2x4-inch wall and partition studs on 16-inch centers. Lath for lining all walls and ceilings. Clear A bevel siding for outside walls. Clear outside finish. 2x4-inch ceiling joists on 16-inch centers. 2x4 rafters on 24-inch centers. Roof sheathing laid tight. Best quality green slate surfaced roofing. Clock nail windows and frames, size of glass in each sash 26x24 inches. Kitchen and bathroom, size of glass, each sash 26x16 inches. Clear interior trim. Clear 6-inch two number baseboard. Door frames and doors, size 2 feet 8 inches by 6 feet 8 inches, highest quality fir. Front and rear doors upper half glass. Casework furnished where shown in plans. Cellar stairs furnished where shown in plans. Two coats of paint for exterior. Stain and varnish for interior trim and doors. All nails, mortised brackets, hinges, double action door hinges and spring window locks to complete house. Height of ceiling 8 feet. Roof 1/2 pitch. Exposed eaves 1 foot projection. Plans reversed without charge, see page 47.

Elmhurst No. 3



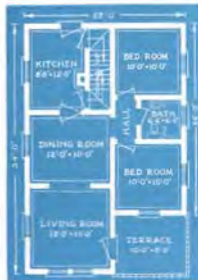
Elmhurst No. 4





HERE is presented a cottage of most effective design. Old fashioned simplicity combined with modern treatment of details are of outstanding character. The house is planned so that it can face either of two ways to the street, it being twenty-two feet one way and thirty-four feet the other. The "L" which forms the projecting part of the living room offers opportunity for a delightful little terrace of brick or stone. Hooded entrance over front door is an appealing feature, while shutters add their part to the beauty of the home. The interior is a study in efficient arrangement as practiced by skilled designers. Three sides of the living room are open to light and air. All rooms are well proportioned. Central hall gives access to both bedrooms and segregates the bathroom. Cellar stairs lead from kitchen to basement and over these are stairs leading to the attic or suggested second floor room arrangement. At the prices quoted the second floor is unfinished except for the floor. When you purchase the Roseland if you wish us to include materials for finishing the second floor in accordance with our suggestions, we will be glad to do so for \$74 additional. The small sketch at the side of the plan suggested for the second floor will inform you of the ceiling heights obtainable. Shingles as shown in above illustration can be furnished for outside walls only when double construction is ordered. The price of the Roseland in single construction, specifications for which are listed below is \$975. In double construction the price is \$1695 and the specifications are the same as in single construction except that the following materials are added: Sub-flooring for first floor only with building paper to be placed between the sub-flooring and finish flooring, outside wall sheathing under level siding or cedar shingles with building paper between, sash weights, cord, pulleys and locks for all double sliding windows and additional nails for extra materials. Whether you purchase in Single Construction or Double Construction, materials with which to finish the second floor in accordance with our suggestion can be furnished for \$74 additional.

The Roseland

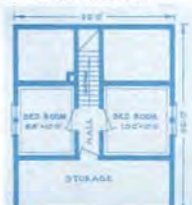


### Specifications, The Roseland

**Single Construction:** 6x6-inch built-up girders, 2x6 wall plates, 2x8-inch joists on 16-inch centers first floor, bridging for joist, 2x6 joist on 16-inch centers second floor. Clear 2 1/2-inch face tapered and grooved flooring first and second floors. 2x4-inch wall and partition studs on 16-inch centers. Lath for lathing all walls and ceilings on first floor. Clear A redwood level siding for outside walls. Clear outside finish. 2x6-inch rafters on 24-inch centers. Roof sheathing laid tight. Best quality variegated slate surfaced hexagonal strip shingles. Check tall windows and frames, size of glass in each sash 36x24 inches. Kitchen and bathroom supplied with check tall window, size of glass in each sash 36x16 inches, all upper sash divided lights. Clear interior trim. Clear 6-inch two member baseboard of attractive design. Door frames and doors, size 2 feet 8 inches by 6 feet 8 inches, highest quality fit. Front door 13 divided lights, rear door glass upper half. Casement openings where shown in plans. Stairs to second floor and cellar furnished. Two coats of paint for exterior. Stain and varnish for interior trim and doors. All nails, mortised locksets, hinges, double acting floor hinges and spring window bolts to complete house. Hraht of ceiling 8 feet first floor. Roof 1/2 pitch. Plans reversed without charge. See page 47.



### Suggested Second Floor Plan





**J**UST the prettiest little cottage in our town" remarked one of the first owners of the Larchmont in a letter written us after it had been completed. "The materials are all so wholesomely good and strong. I am just too proud of the beautiful work. Nothing so good anywhere about us." And that is very true, for only the highest quality of materials can be found in all Aladdin houses. Choice of three floor plans are found below, and each finds its admirers. They are all priced alike, and of course the price includes freight charges to your nearest railroad station. Study the different plans and select the one that most nearly meets your requirements. Aladdin guarantees your satisfaction in every particular.

The Larchmont is planned so that it can face either of two ways to the street. The price in Single Construction, specifications for which are given below, is **\$689**. The price in Double Construction is **\$799** and the specifications are the same as below except that the following materials are added: Sub-floor sheathing under finished floor with building paper between two floors, outside wall sheathing under bevel siding with building paper between, sash weights, cord, pulleys and locks for all double sliding windows and additional nails for this extra material.

### Specifications, The Larchmont

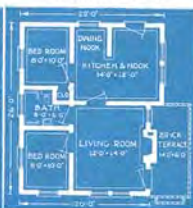
**Single Construction:** Size 26x22, 6x6-inch built-up girder, 2x6 wall plates. 2x6-inch joists on 16-inch centers. Bridging for joists. Clear 2 1/2-inch face tongued and grooved flooring. 2x4-inch wall and partition studing on 16-inch centers. Lath for lining all walls and ceilings. Clear A red-wood bevel siding for outside walls. Clear outside finish. 2x4-inch ceiling joists on 16-inch centers. 2x4 rafters on 24-inch centers. 2x6 hip rafters. Roof sheathing laid tight. Best quality variegated slate surfaced hexagonal strip shingles. Check rail windows and frames, size of glass, in

each sash 26x24 inches. Bathroom and kitchen, size of glass in each sash 26x16 inches. All upper sash divided lights. Clear interior trim. Clear 6-inch two member baseboard. Door frames and doors, size 2 feet 8 inches by 6 feet 8 inches, highest quality fir. Front door divided lights. Rear door upper half glass. Curved arches furnished where shown in plans. Two coats of paint for exterior. Stain and varnish for interior trim and doors. All nails, mortised locksets, hinges, double acting floor hinges, and spring window bolts to complete house. Height of ceiling 8 feet. Roof 1 1/2 pitch. Plans reversed without charge. See page 47.

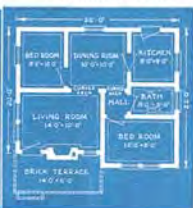
Larchmont Plan No. 1



Larchmont Plan No. 2



Larchmont Plan No. 3





**A PRIZE WINNER** designed to gladden the hearts of those who are looking for a small compact house of up-to-date appearance. It is astonishing to find so complete a home in such small compass and with so many conveniences at so low a price. The Sunbeam is made in four floor plan arrangements. They are all priced alike. The hood over front door is included in the price.

The price in single construction, specifications for which are given below, is **\$498**. The price in double construction is **\$595** and the specifications are the same as below except that the following materials are added: Sub-floor sheathing under finished floor with building paper between two floors, outside wall sheathing under bevel siding with building paper between, sash weights, cord, pulleys and locks for all double sliding windows and additional nails for this extra material.

#### Specifications, The Sunbeam

**SUNBEAM (Single Construction.)** Size 22x20. 6x6-inch built-up girder, 2x6-inch wall plates, 2x6-inch joists on 16-inch centers. Clear 2 $\frac{1}{2}$ -inch face tongued and grooved flooring. 2x4-inch wall and partition studding on 16-inch centers. Lath for lining all walls and ceilings. Clear A redwood bevel siding for outside walls. Clear outside finish. 2x4-inch ceiling joists on 16-inch centers. 2x4 rafters on 24-inch centers. Roof sheathing laid tight. Best quality green slate surfaced roofing. Check rail windows and frames, size of glass in each sash 26x24 inches. Kitchen, 26x16-inch glass in each sash. Bathroom has swinging casement, size of glass 18x24 inches. Clear interior trim. Clear 6-inch two member baseboard. Door frames and doors, size 2 feet 8 inches by 6 feet 8 inches, highest quality fir. Front and rear doors upper half glass. Cased openings finished where shown in plans. Cellar stairs furnished when shown in plans. Two coats of paint for exterior. Stain and varnish for interior trim and doors. All nails, mortised locksets, hinges, double acting floor hinges and spring window bolts to complete house. Height of ceiling, 8 feet. Roof  $\frac{1}{4}$  pitch. Exposed eaves 1 foot projection. Plans reversed without charge, see page 47.

**Sunbeam No. 1**



**Sunbeam No. 2**



**Sunbeam No. 3**



**Sunbeam No. 4**



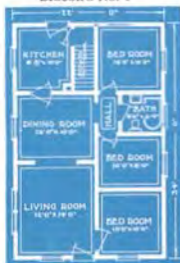
Remember Aladdin pays the freight and guarantees the quantity and quality of all materials and their safe arrival at destination.

The Savings After Building a Small Home will add more to your Happiness than the luxuries of a big home.



**T**HE BLUEBIRD is a home of beautiful proportions, interesting detail and excellent interior arrangements. To own it insures the fullest satisfaction in everything that goes to make a real home. It will measure up to your highest expectations, from the strength of its sturdy timbers to the charm and beauty of woodwork and finish. See picture of interior of the Bluebird on page 3. Four floor

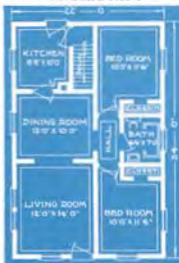
**Bluebird No. 1**



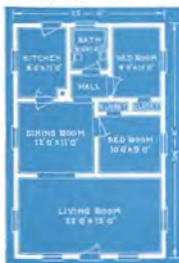
**Bluebird No. 2**



**Bluebird No. 4**



**Bluebird No. 5**



plan arrangements are shown here. They are all priced alike. The price in single construction, specifications for which are shown at the bottom of the page, is **\$765**. The price in double construction is **\$869** and the specifications are the same as below except that the following materials are added: Sub-floor sheathing under finished floor with building paper between two floors, outside wall sheathing under bevel siding with building paper between, sash weights, cord, pulleys and locks for all double sliding windows and additional nails for this extra material. Porch size 16x8 feet shown in picture may be had by adding **\$99** to above prices.

**Specifications, The Bluebird**

**BLUEBIRD**—(Single Construction.) Size 22x28, 6x6-inch built-up girder, 2x6 wall plates, 2x8-inch joists on 16-inch centers, bridging for joists. Clear 2 1/4-inch face-tongued and grooved flooring, 2x4-inch wall and partition studs on 16-inch centers. Lath for lining all walls and ceilings. Clear a redwood bevel siding for outside walls. Clear outside finish. 2x4-inch ceiling joists on 16-inch centers. 2x4 rafters on 24-inch centers. Roof sheathing 1/2-inch light. Best quality green distemper-tinted roofing. Check rail windows and frames, size of glass in each sash 20x28 inches. Blackrooms and blinds, size of glass, in each sash 20x28 inches. Clear interior trim. Clear 6-inch two-mouldy baseboard. Door frames and doors, size 2 feet 8 inches by 6 feet 8 inches, highest quality fir. Front and rear doors upper half glass. Ceilings openings furnished where shown in plans. Ceilings stairs furnished when shown in plans. Two coats of paint for exterior. Stain and varnish for interior trim and doors. All nails, mortised locksets, hinges, double acting floor hinges, and spring window bolts to complete house. Height of ceiling 8 feet. Roof 1/2 pitch. Exposed eaves 1 foot projection. Plans reversed without charge. See page 47.

Remember Aladdin pays the freight and guarantees the quantity and quality of all materials and their safe arrival at destination.



**T**HIS is the newest 1928 creation of Aladdin designers, and has been christened the Lindbergh. It would be hard to find a more charming picture of a home than is presented above. And it is just as good, just as wholesome, just as sturdy and strong, as its prototype. The Lindbergh is a pleasing combination of shingles and brick. The circular entrance with recessed entry is a fascinating characteristic. The roof lines are especially well proportioned. Plan No. 1 contains a twenty-two foot living room which gives entrance to two bed rooms and dining room. Bath room and closet separate the bed rooms. A light airy kitchen is arranged with entrance to cellar. Plan No. 2 has all the advantages of number one but with an extra bed room, three in all, at the slightly extra cost quoted below.

The Lindbergh No. 1 is **\$1075** in single construction and **\$1248** in double construction.

The Lindbergh No. 2 is **\$1143** in single construction and **\$1319** in double construction.

See specifications for single and double construction below.

In single construction the Lindbergh is furnished with clear redwood bevel siding. In double construction you may have your choice of cedar shingles or redwood siding. In erecting the house the fireplace may be omitted if desired.

#### Specifications, The Lindbergh, No. 1 & 2

**Single Construction:** 6x8-inch built-up girder, 2x6 wall plates. 2x8-inch joists on 16-inch centers, bridging for joists. Clear 2 1/4-inch face tongued and grooved flooring. 2x4-inch wall and partition studding on 16-inch centers. Lath for lining all walls and ceilings. Clear A redwood bevel siding for outside walls. Clear outside finish. 2x4-inch ceiling joists on 16-inch centers. 2x6 rafters on 24-inch centers. Roof sheathing laid tight. Best quality variegated slate surfaced hexagonal strip shingles. Check rail windows and frames, size of glass in each sash 26x24 inches. Both-room and kitchen, size of glass in each sash 26x16 inches all top sash divided lights. Blinds for front windows. Clear interior trim. Clear 6-inch two member baseboard. Door frames and doors size 2 feet 8 1/2 inches by 6 feet 8 inches, highest quality fir. French front door divided 15 lights.

(Specifications continued on page 41)

Interior View, Lindbergh No. 1



The Lindbergh No. 1



The Lindbergh No. 2





**T**HE LINDEN is a splendid design that is sure of a place among our best sellers. The photograph above illustrates the charm and home appeal of the exterior and an examination of the three floor plans will convince you of the ideal room arrangement we have obtained for this new Aladdin. From the three sizes shown you will be sure to find one that exactly meets your ideas of a comfortable, convenient, sturdy home.

The Linden No. 1 size, 24x30 feet, is \$739 in single construction and \$847 in double construction. The Linden No. 2 size, 24x32 feet, is \$779 in single construction and \$895 in double construction. The Linden No. 3 size, 24x34 feet, is \$819 in single construction and \$940 in double construction.

See specifications for single and double construction below. Porch as shown, size 12x8 feet, will be furnished with the Linden for \$89 additional or one of the other porches shown in this catalog may be selected for your home at the prices quoted for the various porches.

### Specifications, The Linden, No. 1, 2 & 3

**Single Construction:** 4x6-inch built-up girder, 2x6 wall plates, 2x8-inch joists on 16-inch centers, bridging for joists. Clear 2 1/2-inch face tongue and grooved flooring, 2x8-inch wall and partition studding on 16-inch centers. Lath for lining all walls and ceilings. Clear A redwood bevel siding for outside walls. Clear outside finish. 2x4-inch ceiling joists on 16-inch centers. 2x4 rafters on 24-inch centers. Roof sheathing laid tight. Best quality green slate-surfaced roofing. Check rail windows and frames, size of glass in each sash 26x24 inches. Bathrooms and kitchen, size of glass in each sash 26x16 inches. Clear interior trim. Clear 6-inch two member baseboard. Door frames and doors size 2 feet 8 inches by 6 feet 8 inches, highest quality fir. Front and rear doors upper half glass. Casement openings furnished where

shown in plans. Cellar stairs furnished when shown in plans. Two coats of paint for exterior. Stain and varnish for interior trim and doors. All nails, mortised locksets, hinges, double acting floor hinges, and spring window bolts to complete house. Height of ceiling 8 feet. Roof 1/2 pitch. Exposed eaves 1 foot projection.

**Double Construction** takes the same specifications as single construction with the following additions: Sub-floor sheathing under finished floor with building paper to be placed between the two floors, outside wall sheathing under bevel siding with building paper to be placed between, sash weights, cord, rollers and sash locks for all double sliding windows and additional nails for the above extra materials. Plans reversed without charge. See page 47.

Linden No. 1



Linden No. 2



Linden No. 3





The Potomac :: A Quaint Colonial Bungalow :: Price **\$919** And We Pay The Freight  
 Ready Cut

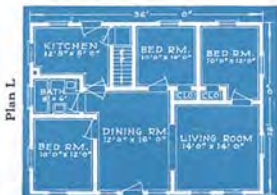
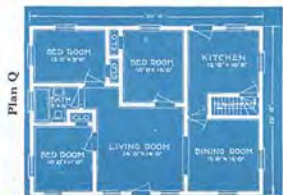


**T**HE POTOMAC is a master design. Colonial atmosphere is ever appealing to the home owner for it bespeaks hospitality, generosity, old-fashioned simplicity and true goodness. The shubbed gable ends lend a quaint touch making the Potomac a home of distinction.

The price of the Potomac in single construction is **\$919** as described in specifications below. The price in double construction is **\$1043** with specifications the same as below except that the following materials are added: Sub-floor sheathing below finish floor with building paper between; outside wall sheathing under bevel siding with building paper between, sash weights, cords and sash locks, for all double sliding windows and extra nails for this additional material. Pergola type porch comes extra **\$69**—size 8x14 feet. This porch has matched ceiling, weather-proof roof. We can also furnish the same style porch in size 8x20 feet with three columns at **\$102**.

**Specifications, The Potomac**

**Single Construction:** Size 36 by 26 feet. 6x6-inch built-up girder, 2x6 wall plates, 2x8-inch floor joists on 16-inch centers, bridging for joists. Clear 2 1/4-inch face tongued and grooved flooring. 2x4-inch wall and partition studding on 16-inch centers. Lath for lining all walls and ceilings. Clear A redwood bevel siding for outside walls. Clear outside finish. 2x4-inch ceiling joists on 16-inch centers. 2x6-inch rafters on 24-inch centers. Roof sheathing laid tight. Best quality green slate surfaced roofing. Check rail windows and frames, size of glass in each sash 26x24 inches, sash glazed ready to hang. Kitchen and bathroom supplied with check rail window, size of glass in each sash 26x16 inches. Clear interior trim. Clear 6-inch two member baseboard of attractive design. Door frames and doors size 2 feet 8 inches by 6 feet 8 inches, highest quality fir. Cased openings furnished where shown in plans. Front and rear doors glass upper half. Cellar stairs furnished when shown in plans. Two coats of paint for exterior. Stain and varnish for interior trim and doors. All nails, matched locksets, hinges, double acting floor hinges and spring window bolts to complete house. Height of ceiling 8 feet. Roof 1/2 pitch. Exposed eaves 1 foot projection. Plans reversed without charge, see page 47.





WHEN over twenty years time and thought are devoted to one subject, surely you can know that the experience gained is of great value. For over twenty years the Aladdin Company has devoted all its energy toward perfecting ready cut homes.

Perfection means, among other things, that the materials of which the home is constructed must be of the very highest quality Certified Lumber. It means that the construction used in the building of



A Victory Interior

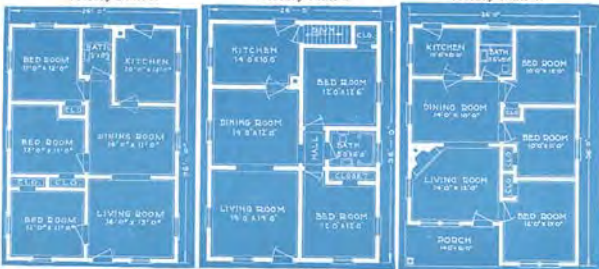
the home must give strength, sturdiness, and the ability to withstand the wear of time. It means that the roof must be weather proof, and the paints used must be of the highest quality to give not only an attractive home but perfect protection from the action of the weather in all seasons of the year. The completed home must be well insulated. It should be easy to heat in winter and easy to keep cool in summer. It means that the inside and outside doors must be so carefully located that they will be of convenient access in going from one room to another. These locations must also be studied to permit satisfactory arrangement of furniture and furnishings.

The location of windows is a problem in itself. Not only must the position of large pieces of furniture of common use in all homes be considered, but the number of windows to insure perfect ventilation cannot be lost sight of. Windows must be properly placed to present the best appearance within a room and also to give a balanced appearance from the exterior of the house. It has been the ambition of Aladdin to provide all these points of perfection in a home and at the same time sell that home at a lower price than it could be purchased for from any other source.

Victory Plan A

Victory Plan S

Victory Plan W



The price of the Victory in single construction is \$898 as described in specifications below. Price of Victory in double construction is \$1024 and specifications are same as below except that following materials are added: Sub-floor sheathing under finished floor with building paper to be placed between the two floors; outside wall sheathing under bevel siding with building paper to be placed between; sash weights, cords, pulleys and sash locks for all double sliding windows; additional nails for above extra materials.



Picture of Victory Showing Big Porch

The front porch shown in illustration above is size 24x8 feet and will be furnished at an extra cost of \$145. The photo above gives a splendid idea of the appearance of the Victory with this attractive porch.

The porch shown in the large illustration of the Victory is 22x8 feet in size and will be furnished at \$140. It may be that you will desire the 24x8-foot porch shown at the top of this page or one of the smaller porches shown in this catalog. Our object in pricing the porches separate is so you can have the porch of your choice or order without porch if you so desire.

**Specifications. The Victory:** (Single Construction.) Size 26x36. 6x6-inch built-up girder, 2x6 wall plates, 2x8-inch joists on 16-inch centers, bridging for joists. Clear 2 1/2-inch face tongued and grooved flooring. 2x4-inch wall and partition studding on 16-inch centers. Lath for lining all walls and ceilings. Clear A redwood bevel siding for outside walls. Clear outside finish. 2x4-inch ceiling joists on 16-inch centers. 2x6-inch rafters on 24-inch centers. Roof sheathing laid tight. Best quality green slate-surfaced roofing. Check rail windows and frames, size of glass in each sash 26x24 inches. Bath rooms and Kitchens supplied with check rail windows, size of glass in each sash, 26x16 inches. Clear interior trim. Clear 6-inch two-member baseboard of attractive design. Door frames and doors, size 2 feet 8 inches by 6 feet 8 inches, highest quality fir. Casel openings furnished where shown in plans. Front and rear doors upper half glass. Cellar stairs furnished when shown in plans. Two coats of paint for exterior. Stain and varnish for interior trim and doors. All nails, mortised locksets, hinges, double acting floor hinges and spring window bolts to complete house. Height of ceiling 8 feet. Roof 1/4 pitch. Exposed eaves 1 foot projection. Plans reversed without extra charge, see page 47.



Picture of Victory Plan W With Inset Porch

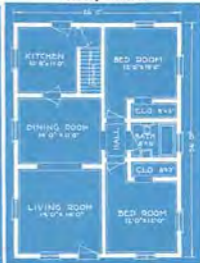
Victory Plan X



Victory Plan Y



Victory Plan Z



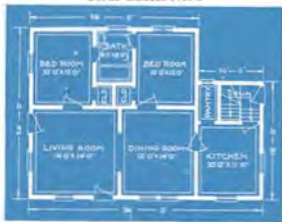


**R**EFINEMENT of detail and the true simplicity of Colonial architecture distinguish this beautiful bungalow. As a home it satisfies every wish in beauty, character, comfort, convenience and remarkable value. Three floor plans are shown, each different in size, arrangement and price. Any one of these plans can be placed, either the narrow way or the long way, according to your lot. One of the outside doors opening into the living room can be replaced by a window if desired at no extra cost. The Coral Gables No. 1 is **\$798** in Single Construction and **\$ 925** in Double Construction. The Coral Gables No. 2 is **\$879** in Single Construction and **\$ 998** in Double Construction. The Coral Gables No. 3 is **\$914** in Single Construction and **\$1034** in Double Construction.

See specifications for Single Construction below. The specifications for Double Construction are the same as below, except that the following materials are added: Sub-floor sheathing below finish floor with building paper between; outside wall sheathing under bevel siding with building paper between, sash weights, cords and sash locks, for all double sliding windows and extra nails for this additional material.

Porch size 12x8 feet will be furnished by your adding **\$75** to the price. Remember we pay the freight and furnish Aladdin Certified Lumber.

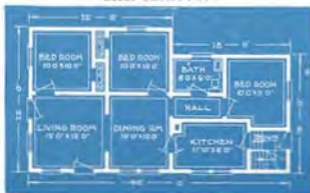
**Coral Gables No. 3**



**Specifications, Coral Gables**

**Single Construction:** 6x6-inch built-up gilder, 2x6 wall plates, 2x4-inch joists on 16-inch centers, bridging for joists. Clear 2 1/2-inch face tongued and grooved flooring, 2x4-inch wall and partition studs on 16-inch centers. Lath for lining all walls and ceilings. Clear A reduced bevel siding for outside walls. Clear outside finish, 2x4-inch ceiling joists on 16-inch centers. 2x4 rafters on 24-inch centers furnished for Nos. 1 and 2, 2x6 rafters on 24-inch centers for No. 3. Roof sheathing laid tight. Best quality green slate surfaced roofing. Check rail windows and frames, size of glass in each sash 26x24 inches. Kitchen and bathroom supplied with check rail windows, size of glass in each sash 26x16 inches. Clear interior trim. Clear 6-inch two member lumber. Door frames and doors size 2 feet 8 inches by 6 feet 8 inches, highest quality fir. All outside doors upper half glass. Cellar stairs furnished. Cased openings furnished where shown in plans. Two coats of paint for exterior. Stain and varnish for interior trim and doors. All nails, mortised locksets, hinges, double acting floor hinges and spring window bolts to complete home. Height of ceiling 8 feet. Roof 1/4 pitch. Eaved eaves 1 foot projection. Plans reversed without charge. See page 47.

**Coral Gables No. 2**



**Coral Gables No. 1**





**A**PPRECIATIVE students of home architecture all pronounce The Maryland the biggest small home ever designed. To find a three-bedroom home, which also contains living room, dining room, kitchen, cellar stairs, bathroom and closets within the compass of twenty-two by twenty-two feet is astonishing. But when in addition these advantages are created with an exterior of such great beauty, the result has been called nothing short of marvelous. You will note that the rooms are all well proportioned, of good size and generously lighted. When only one bedroom is needed it is not necessary to finish off the second floor at the present time. The Maryland is priced with second floor unfinished except for floor. Should you desire the additional rooms shown in the suggested second floor plan we will furnish the necessary materials read-cut for \$118. The price of the Maryland in single construction is \$839 and in double construction \$947. Specifications are given below. Whether you purchase in single or double construction, materials with which to finish the second floor in accordance with our suggestion can be furnished for \$118 additional. The porch is included in the prices quoted inasmuch as it is really a part of the house itself and could not be used to advantage on any other house shown in this catalog. It is designed for a cement floor and is 7 feet wide and 6 feet deep.

### The Maryland

### Specifications—The Maryland



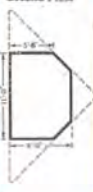
**Single Construction:** 2x4-inch built-up girder, 2x6 wall plates, 2x8-inch joists on 16-inch centers first floor, bridging for joists. 2x6 joist on 16-inch centers second floor. Clear 2 1/2-inch face tongued and grooved flooring first and second floors. 2x4-inch wall and partition studding on 16-inch centers. Lath for being all walls and ceilings on first floor. Clear A redwood level siding for outside walls. Clear outside finish. 2x4-inch rafters on 24-inch centers. Roof sheathing laid tight. Best quality variegated slate surfaced hexagonal strip shingles. Check rail windows and frames, size of glass in each sash 26x24 inches. Kitchen supplied with check rail window, size of glass in each sash 26x16 inches, all top sash divided lights. Blinds for front windows. Clear interior trim. Clear 6-inch two member baseboard of attractive design. Door frames and doors, size 2 feet 8 inches by 6 feet 8 inches, highest quality fir. Front door divided lights, rear door glass upper half. Casid opening between living room and dining room. Stairs to second floor and cellar furnished. Two coats of paint for exterior. Stain and varnish for interior trim and doors. All nails, mortised locksets, hinges, double acting floor hinges and spring window bolts to complete house. Height of ceiling 8 feet 6 inches first floor. Roof 1/2 pitch. Plans reversed without charge. See page 47.

**Double Construction** takes the same specifications as single construction with the following additions: Sub-floor sheathing for first floor only with building paper to be placed between the sub-flooring and finish flooring, outside wall sheathing under level siding with building paper to be placed between, sash weights, cord, pulleys and sash locks for all double sliding windows and additional nails for the above extra materials.

### Suggested Second Floor Plan



### Cut Shows height of walls Second Floor





**A**LADDIN designers are especially proud of the Jersey. Besides being of the very latest popular type of architecture for small homes it offers an astonishing amount of comfort and convenience in its interior arrangements. It really offers such a variety of arrangements that it will perfectly suit the needs of any family. The first floor plan as shown offers a complete home with living room, dining room, two bed rooms, bath, kitchen and stairway to attic and to basement. The house is priced this way, with second story undivided except for the floor. Should four bed rooms be desired, the second story will be furnished as shown in suggested second floor plan, and as priced below. Where only three bedrooms are necessary, and a larger living room is preferred, the partition between living room and front bedroom on first floor can be omitted giving living room 20 feet long. Note the recessed bay window fronting the living room, and entry at front door. The Jersey is a delight to every owner, and adds grace to any neighborhood.

The price of the Jersey in single construction is **\$1018** and in double construction **\$1128**. Specifications are given below. Whether you purchase in single or double construction materials with which to finish the second floor in accordance with our suggestion can be furnished for **\$92** additional.

### Specifications—The Jersey

**Single Construction:** 6-6-inch built-up girders, 2x8 wall plates, 2x8-inch joists on 16-inch centers first floor, bridging for joist, 2x6 joist on 16-inch centers second floor. Clear 2 1/2-inch face tongued and grooved flooring first and second floors. 2x4-inch wall and partition studs on 16-inch centers. Lath for lining all walls and ceilings on first floor. Clear A redwood bevel siding for outside walls. Clear outside finish. 2x4-inch rafters on 24-inch centers. Roof sheathing laid tight. Best quality variegated slate surfaced hexagonal strip shingles. Check rail windows and frames, size of glass in each sash 26x24 inches. Kitchen and bath supplied with check rail window, size of glass in each sash 26x16 inches. All upper sash divided lights. Clear interior trim. Clear 6-inch two member baseboard of attractive design. Door frames and doors, size 2 feet 8 inches by 6 feet 8 inches highest quality fir. Front door divided lights, rear door glass upper half. Cased or curved openings where shown in plans. Stairs to second floor and cellar furnished. Two coats of paint for exterior. Sash and weights for interior trim and doors. All nails, morked brackets, hinges, double acting floor hinges and spring window bolts to complete house. Height of ceiling 8 feet first floor. Roof 1/2 pitch. Plans reversed without charge. See page 47.

**Double Construction** takes the same specifications as single construction with the following additions: Sub-floor sheathing for first floor only with building paper to be placed between the sub-flooring and finish flooring, outside wall sheathing under bevel siding with building paper to be placed between, sash weights, cord, pulleys and sash locks for all double sliding windows and additional nails for the above extra materials.



Suggested Second Floor Plan





**T**HE PILGRIM is an interesting adaptation of Dutch architecture to the American Colonial type. This style has come to be the most popular for modest two story homes all over the country. Perfect harmony is manifest in the Pilgrim. While the impression is of a story and a half house, all ceilings both first and second floors are square with full height side walls. Study the interior picture on this page. A 14x22-foot living room, 12x12-foot dining room, 11x16-foot kitchen, a coat closet and grade cellar entrance complete the first floor. The second floor has three bedrooms, hall, three closets, linen closet and bath. The price of the Pilgrim in single construction, specifications for which are shown below, is \$1148. The price in double construction is \$1308 and specifications are the same as for single construction except that the following materials are added: Sub-floor sheathing under finished floors, with building paper between the two floors. Outside wall sheathing under bevel siding with building paper between, sash weights, cord, pulleys and sash locks for the double sliding windows and additional nails for the extra materials. Pergola porch shown in the picture is added, giving protection and may be had at \$99 additional. Size of porch 8 feet by 14 feet.

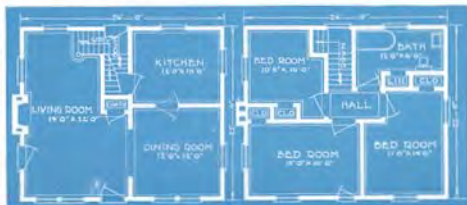
### Specifications, The Pilgrim

**Single Construction:** Size 22x26, 6x6 built-up girder, 2x6 wall plates, 2x8-inch joists on 16-inch centers 1st and 2nd floors, bridging for joists. Clear 2 1/4-inch face tongued and grooved flooring, 2x4-inch wall and partition studing on 16-inch centers. Lath for lining all walls and ceilings. Clear A redwood bevel siding for outside walls. Clear outside finish. 2x4-inch ceiling joists on 16-inch centers. 2x4-inch rafters on 24 inch centers. Roof sheathing laid tight. Best quality green slate surfaced roofing. Check rail windows and frames, size of glass in each sash 26x28 inches 1st floor, 26x24 2nd floor. Kitchen and bathroom supplied with check rail window, size of glass in each sash 26x16 inches. Clear interior trim. Clear 6-inch two member baseboard. Door frames and sashes, size 2 feet 8 inches by 6 feet 8 inches, highest quality fir. Front and rear doors upper half glass. Casement openings furnished where shown in plans. Attractive circle-tread stairs as shown on plans. Grade Entrance either stairs under main stairs. Two coats of paint for exterior. Stain and varnish for interior trim and doors. All nails, morticed locksets, hinges, double acting floor hinges and spring window bolts to complete house. Height of ceiling 9 feet 1st floor—8 feet 2nd floor. Roof 3/4 pitch. Round eaves 1 foot projection. Plans reversed without charge, see page 47.



First Floor Plan

Second Floor Plan





**T**HE ADAMS is an American home of chaste simplicity. Straight architectural lines create a pleasing and substantial style of home, which fulfills the ideals of those home builders who would rather invest their money in conveniences than embellishments. A spacious living room with semi-open stairway, well proportioned dining room and model kitchen with grade cellar entrance, complete the first story. The second story has three excellent bedrooms, four closets and bath. We show an optional second story which incorporates four bedrooms; either may be had at the same price. The price in single construction is **\$1089** as per specifications below. The price in double construction is **\$1255**, with specifications same as below except the following materials are added: Sub-floor sheathing under finished floors with building paper to be placed between two floors, outside wall sheathing under bevel siding with building paper to be placed between, sash weights, cord, pulleys and sash locks for all double sliding windows and additional nails for the above extra materials. The porch size 20x8 will be shipped if you will add **\$129** to price. **Aladdin Certified Lumber** gives highest quality to your home.

#### Specifications, The Adams

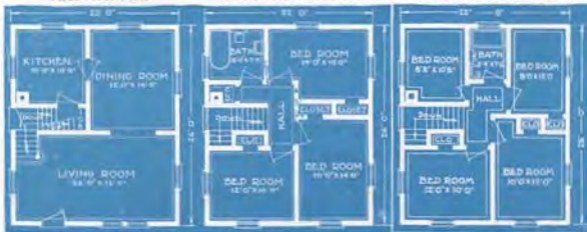
**Single Construction:** Size 22x36. 6x6 built-up girder, 2x6 wall plates, 7x8-inch joists on 16-inch centers 1st and 2nd floors, latching for joists. Clear 2 1/2-inch face tongue and grooved flooring. 2x4-inch wall and partition studing on 16-inch centers. Lath for lining all walls and ceilings. Clear A redwood level siding (or outside walls. Clear outside finish. 2x4-inch ceiling joists on 16-inch centers. 2x4-inch rafters on 24-inch centers. Roof sheathing laid tight. Best quality green slate surfaced roofing. Check rail windows and frames, size of glass in each sash 26x28 inches 1st floor, 26x24 2nd floor. Kitchen and bathroom supplied with check rail window, size of glass in each sash 26x16 inches. Clear

interior trim. Clear 6-inch two member baseboard. Door frames and doors, size 2 feet 8 inches by 6 feet 8 inches—highest quality fir. Front and grade doors upper half glazed. Casid openings furnished where shown in plans. Attractive circle tread stairs as shown on plans. Grade entrance cellar stairs under main stairs. Two coats of paint for exterior. Stain and varnish for interior trim and doors. All nails, mortised lockers, hinges, double acting floor hinges and spring window bolts to complete house. Height of ceiling 9 feet 1st floor—8 feet 2nd floor. Roof 1/2 pitch. Rafters spaced every 1 foot projection. Plans reversed without charge, see page 47.

First Floor Plan

Second Floor Plan No. 1

Second Floor Plan No. 2







**T**HE INVERNESS illustrates a most interesting treatment of roof lines, and combines a home of definite personality with one that is intensely practical. It is thoroughly modern in design, construction and appointment, and is built of our Certified Lumber, all exposed lumber inside and outside being knotless. The Inverness in single construction is supplied with red wood bevel siding for both first and second stories. In double construction you can have your choice of all siding, all shingles or first story siding and second story shingles as shown in illustration. The price of the Inverness in single construction is **\$1134** as per specifications below. The price in double construction is **\$1285** with specifications same as below except the following materials are added: Sub-floor sheathing under finished floors with building paper to be placed between the two floors, outside wall sheathing under bevel siding or shingles with building paper to be placed between, sash weights, cord, pulleys and sash locks for all double sliding windows and additional nails for the above extra materials.

Interior View of the Inverness

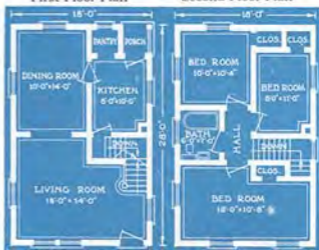


**Specifications, The Inverness**

**Single Construction:** 6x6-inch built-up girder, 2x6 wall plates, 2x8-inch joists on 16-inch centers first and second floors. Bridging for joists. Clear 2 1/4-inch face, tongued and grooved flooring. 2x4-inch wall and partition studs on 16-inch centers. Lath for lining all walls and ceilings. Clear A redwood bevel siding for outside walls. Clear outside finish. 2x4-inch ceiling joists on 16-inch centers. 2x4-inch rafters on 24-inch centers. Hip rafters 2x6-inches. Roof sheathing laid tight. Best quality variegated, slate surfaced, hexagonal strip shingles. Check rail windows and frames, size of glass in each sash 26x28 inches 1st floor, 26x24 inches 2nd floor. Bathroom size of glass each sash 26x16 inches. Clear interior trim. Clear 6-inch two member baseboard. Door frames and doors, size 2 feet 8 inches by 6 feet 8 inches, highest quality fir. Front door divided lights, rear door upper half glass. Casement openings where shown in plans. Attractive circle tread main stairs. Cellar stairs under main stairs. Two coats of paint for exterior. Stain and varnish for interior trim and doors. All nails, mortised locksets, hinges, double acting floor hinges and spring window bolts to complete house. Size of house 18x28 feet. Height of ceilings 9 feet 1st floor — 8 feet 2nd floor. Hip roof 1/2 pitch. Exposed eaves 1-foot 6-inch projection. Plans reversed without charge. See page 47.

First Floor Plan

Second Floor Plan





**WE WERE** inspired to develop the Welland because of the great popularity of this type on Long Island and the evident satisfaction it has given to all owners in this suburban community adjoining New York City and elsewhere. The utility of a two-story type with the beauty of the story and a half is accomplished, while holding the apparent height of the house down, through splendid handling of eaves and roof lines. If you will study the interior plans carefully you will enthusiastically approve our statement that there was never a more harmonious arrangement or a more complete attainment of convenience than is accomplished here. A large and well proportioned living room with semi-open stairs, an attractive dining room, an efficiently planned kitchen with grade cellar entrance and nook for ice box complete the first floor. On the second floor is found three light airy bedrooms with closets and a large bathroom. And the Welland can be built on a lot of thirty feet frontage, or less.

The Welland is priced at **\$1098** for single construction, specifications for which are shown at bottom of page, and the price for double construction is **\$1285**. Double construction specifications are the same as for single construction except that the following materials are added: Sub-floor sheathing under finished floors with building paper to be placed between the two floors, outside wall sheathing under bevel siding with building paper to be placed between, sash weights, cord, pulleys and sash locks for all double sliding windows, and additional nails for the above extra materials. Porch size 12x8 foot will be furnished by your adding **\$75** to the price. Quality is insured by Aladdin **Certified Lumber**.

### Specifications, The Welland

**Single Construction:** Size 22x26. 6x6 built-up girder. 2x6 wall plates. 2x8-inch joists on 16-inch centers 1st and 2nd floors, bridging for joists. Clear 2 1/2-inch face tongued and grooved flooring. 2x4-inch wall and partition studing on 16-inch centers. Lath for lining all walls and ceilings.

Clear A redwood bevel siding for outside walls. Clear outside finish, 2x4-inch ceiling joists. 2x6-inch rafters on 24-inch centers. Roof sheathing hid tight. Best quality green slate surfaced roofing. Check rail windows and frames, size of glass in each sash 26x28 inches 1st floor, 26x24 2nd floor.

Kitchen and bathroom supplied with check rail window, size of glass in each sash 26x16 inches. Swinging casement window in left wall front bedroom, size glass 18x24 inches. Clear interior trim. Clear 6-inch two member baseboard. Door frames and doors, size 2 feet 8 inches by 6 feet 8 inches, highest quality fir. Front and grade doors upper half glass. Casement openings furnished where shown in plans. Attractive circle tread stairs as shown on plans. Grade entrance cellar stairs under main stairs. Two coats of paint for exterior. Stain and varnish for interior trim and doors. All nails, mortised locksets, hinges, double acting floor hinges and spring window locks to complete house. Height of ceiling 9 feet 1st floor—8 feet 2nd floor, sloping to 6 feet 6 inches at front and rear walls. Roof 1/2 pitch. Exposed eaves 1 foot projection. Plans reversed without charge. See page 47.

First Floor Plan

Second Floor Plan





**T**HE MARIGOLD offers a story and a half home that can be built at the very lowest cost. The price quoted above provides you with the home with the first floor finished in the same way as all our other houses are furnished. The second floor is unfinished except for the floor. The Marigold can be furnished in either of the two first floor plans shown below. Regardless of which plan you select it is possible for you to arrange for two extra bedrooms on the second floor. Our suggestion of a convenient and practical arrangement is shown opposite the first floor plans. When you purchase the home if you wish us to also include materials for finishing the second floor in accordance with our suggestion, we will be glad to do so for \$93 additional. The small sketch over the plan arrangement suggested for the second floor, will inform you of the ceiling heights obtainable.

The price of the Marigold in Single Construction, specifications for which are listed below, is \$789. In Double Construction the price is \$889 and the specifications are the same as in single construction except that the full weight materials are added; Sub-flooring for first floor only with building paper to be placed between the sub-flooring and finish flooring, outside wall sheathing under bevel siding with building paper between, sash weights, cord, pulleys and locks for all double sliding windows and additional nails for extra materials. Whether you purchase in Single Construction or Double Construction, materials with which to finish the second floor in accordance with our suggestion can be furnished for \$93 additional. Porch shown in picture may be had by adding \$120. Size of porch, 70x8 feet.

**Specifications, The Marigold**

**Single Construction:** Size 22x26 feet. 6x6-inch built-up girders, 2x6 wall plates, 2x8-inch joists on 16-inch centers first floor, bridging for joists, 2x6 joist on 16-inch centers second floor, 2x4-inch wall and partition studing on 16-inch centers. Lath for lining all walls and ceilings on first floor. Clear A redwood bevel siding for outside walls. Clear outside finish. 2x4-inch rafters on 24-inch centers. Roof sheathing laid tight. Best quality green slate surfaced roofing. Check rail windows and frames, size of glass in each sash 26x24 inches. Kitchen supplied with check rail window, size of glass in each sash 26x16 inches. Bathroom has swinging casement window, glass size 18x24 inches. Clear interior trim. Clear 6-inch two member baseboard of attractive design. Door frames and doors, size 2 feet 8 inches by 6 feet 8

inches, highest quality fir. Front and rear doors glass upper half. Casement openings where shown in plans. Stairs to second floor and cellar furnished. Two coats of paint for exterior. Sash and varnish for interior trim and doors. All nails, mortised brackets, hinges, double acting floor hinges and spring window bolts to complete house. Height of ceiling 8 feet first floor. Roof 3/4 pitch. Exposed eaves, 1 foot projection. Plans reversed without charge. See page 47.



**First Floor—Plan A**

**First Floor—Plan B**

**Suggested Second Floor Plan**



The Capitol :: Fine Dutch Colonial Type :: Price **\$1695** And We Pay *The Freight*  
 Ready Cut



**T**HE entrance hall with semi-open stairway and cloak closet demand your admiration the minute you enter the Capitol. Arches lead to the right and left into living room and dining room. Think of the possibilities of a living room 26 feet deep and 14 feet wide! Leading from this interesting room is a library or den. On the other side of the house is found pantry separating dining room and kitchen, with cellar entrance under the main stairway. There are six rooms on the second floor—and closets. The Capitol is priced in single construction at **\$1695**. The price in double construction is **\$1929** and the specifications are the same as for single construction except that the following materials are added: Sub-floor sheathing under finish floors with building paper between; outside wall sheathing under bevel siding with building paper between and extra nails for all additional materials. Pergola porch, with covered roof, size 8x14 feet, will be furnished by your adding **\$69** to the price. If you want the 10x14-foot Porte Cochere shown on right side of house add **\$58** to price.

**Specifications, The Capitol**

**Single Construction:** Floor 3/4x26, 6x8-inch bolt-up girders, 2x6 wall plates, 2x8-inch joists on 16-inch centers 1st and 2nd floors, bridging for joists. Clear 2 1/4-inch face tongue and grooved flooring, 2x4-inch wall and partition studs on 16-inch centers. Lath for lining all walls and ceilings. Clear A redwood bevel siding for outside walls. Clear outside finish, 2x4-inch ceiling joists on 16-inch centers, 2x6-inch rafters on 24-inch centers. Roof sheathing laid tight. Best quality green slate surfaced roofing. Check rail windows and frames, six of glass in each sash 26x28 inches, 1st floor; 26x24 inches, 2nd floor. Bathroom and kitchen equipped with check rail window, six of glass in each sash, 26x16 inches. Clear interior trim. Clear 6-inch two member

baseboard. Door frame and doors, size 2 feet 8 inches by 6 feet 8 inches, high quality fir. Front, rear, and side doors upper half glass. Attractive circle tread stairs as shown on plan. Cellar stairs under main stairs. Caser openings furnished where shown in plans. Two coats of paint for exterior. Stain and varnish for interior trim and doors. All nails, mortised locksets, hinges and double acting floor hinges, sash weights, sash cord, sash pulleys and sash locks to complete house. Height of ceilings 9 feet 1st floor, 8 feet 2nd floor. Ceilings on 2nd floor are full height and sloped. Roof 1/2 pitch. Board cover 1 foot projection. Plans reversed without charge. See page 47.

**First Floor Plan—The Capitol**



**Second Floor Plan—The Capitol**





**T**HERE is a fine sense of dignity—even a note of formality—in the proportions and outline of the Norwood. It is thoroughly modern in adaptation—while gaining inspiration for its type from the half-timbered English dwelling. It constitutes an architectural background worthy of the most fastidious home builder. Yet its greatest value is the economy of cost in construction and completion

of this fine home. The interior arrangements will be found most enticing, in arrangement, in form, and in finish. An interestingly designed entry, with vestibule opening into the living room. French door opens on side porch, while archway leads to dining room. At the rear of living room is a coat closet, and stairs. The picture of the living room shown on this page is taken from the stairway, and effectively illustrates the spaciousness and beauty of this splendid room. The two French doors do much to increase its charm. Cellar stairs lead from kitchen to basement and to outside. Three bedrooms, each with closet, together with bathroom complete the second story. The Norwood is a perfect home, and will stand out attractively wherever placed. The price of the Norwood in single construction is **\$1287** and in double construction **\$1448**. Specifications for both single and double construction are given on page 41. The porch shown on the side of the Norwood is priced separately and can be furnished for **\$70**. The porch is 8x10 feet in size.

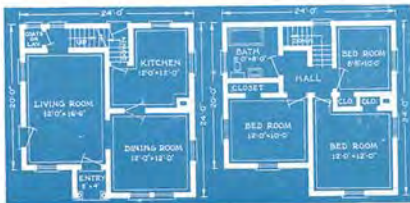
In double construction the Norwood can be furnished with red cedar shingles for the side walls in place of the bevel siding shown in the photograph at no additional cost. See specifications on page 41.

Living Room of the Norwood



First Floor Plan—  
The Norwood

Second Floor Plan—  
The Norwood





A GENUINE conception of true American simplicity in home architecture is presented in the design of the Trenton. Square plans always offer the greatest amount of room for a given size, and how would it be possible to attain more than you will find by a study of these plans. An outstanding feature of the home is the large Sun Room at the front. This opens up from the living room through an archway, and is true to its name for it has seven windows. A sun room affords the joys of light and air of summer time the whole year round. The Trenton's living room is the full width of the house, size 24x12 feet, with semi open stairway at one end, and if desired, a fire place at the other. Note the coat closet just off dining room. Cellar stairs lead from kitchen to outside door and to basement. Three well designed bedrooms, each with closet, and a bathroom on the second floor complete this perfect home. Available Certified Lumber builds in the highest quality throughout. The Trenton is priced in single construction at \$1396, see specifications below. The price in double construction is \$1596, with specifications same as above except the following materials are added: Sub-floor sheathing under finished floors with building paper to be placed between the two floors, outside wall sheathing under bevel siding with building paper to be placed between, sash weights, cord, pulleys and sash locks for all double sliding windows and additional nails for the above extra materials.

### Specifications, The Trenton

**Single Construction:** 6x8 built-up girder, 2x6 wall plates; 2x8-4-inch joists on 16-inch centers 1st and 2nd floors, Clear 2 1/2-inch face tongued and grooved flooring, 2x4-inch wall and partition studs on 16-inch centers. Lath for lining all walls and ceilings. Clear A redwood bevel siding

for outside walls. Clear outside finish. 2x4-inch ceiling joists on 16-inch centers, 2x6-inch rafters on 24-inch centers. Roof sheathing laid tight. Best quality variegated slate surfaced hexagonal strip shingles. Check rail windows and frames, size of glass in each sash 26x28 inches 1st floor, 26x24 inches

First Floor Plan—The Trenton



Second Floor Plan—The Trenton



2nd floor, and sun room. Kitchen and bathroom supplied with check rail window, size of glass in each sash 26x16 inches, all top sash divided lights. Clear interior trim. Clear 6-inch two member baseboard. Door frames and doors, size 2 feet 8 inches by 6 feet 8 inches, highest quality fit. Front door divided fifteen lights, grade door upper half glass. Cased openings furnished where shown in plans. Attractive circle tread stairs as shown on plans. Grade entrance cellar stairs under main stairs. Two coats of paint for exterior. Stain and varnish for interior trim and doors. All nails, mortised lockets, hinges, double acting floor hinges and spring window bolts incomplete house. Height of ceiling 9 feet 1st floor—8 feet 2nd floor and sun room. Roof 1/2 pitch. Board gives 1 foot projection. Plans reversed without charge, see page 47.

The Holland :: A Splendid Model :: Price **\$1589** *And We Pay The Freight*  
 Readi Cut



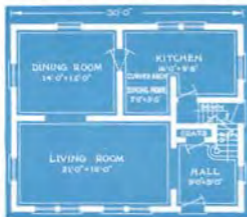
**T**HE HOLLAND is a splendidly conceived model of modern architectural tendencies worthy of the admiration of the most critical judges. Splendid indeed is the roof treatment, wherein the gambrel and gable are excellently blended. The interior is a very happy arrangement, combining comfort,

utility and convenience. The reception hall with coat room and semi-open stairs first greet the eye upon entering the Holland. Through an archway the living room opens up—a picture of which is shown on this page. This is a light and beautiful room, having two double windows in the front. The dining room is well proportioned. Provision is made for a breakfast nook, recessed from the kitchen. Door from kitchen leads to cellar and grade entrance. The second story contains four splendid bedrooms, each with closet, and a centrally located bathroom from the hall. All rooms on the second floor are full height. The Holland is a complete home and adequate for the most exacting and fastidious tastes. The price of the Holland in single construction is **\$1589** and in double construction **\$1829**. Specifications for both single and double construction are given on page 41.

Living Room of The Holland



First Floor Plan—The Holland



Second Floor Plan—The Holland





**T**HE Vermont is true to its name—sturdy construction combined with dignified simplicity. This home would be a credit in any community and could not be excelled for arrangement of rooms. Study the interior. A 12x22 foot living room, 14x12 foot dining room, 10 foot 8 inch by 10 foot kitchen, a coat closet and grade cellar entrance complete the first floor. The second floor has three bedrooms, hall, three closets, linen closet and bath. The price of the Vermont in single construction, specifications for which are given below, is **\$1235**. The price in double construction is **\$1415** and specifications are the same as for single construction except that the following materials are added: Sub-floor sheathing under finished floors, with building paper between the two floors. Outside wall sheathing under bevel siding with building paper between, sash weights, cord, pulleys and sash locks for the double sliding windows, and additional nails for the extra materials. The porch is quoted separately for the reasons given on page forty-seven of this catalog. The size of the porch shown in the picture is 22 feet by 8 feet. Has large round columns and the steps are six feet wide. This porch may be had at **\$157** additional, or one of the other porches shown in this catalog may be ordered for shipment with your home at the prices quoted for the various porches.

#### Specifications—The Vermont

**Single Construction:** Size 26x22. 6x8 built-up girder, 2x6 wall plates; 2x8-inch joists on 16-inch centers 1st and 2nd floors. Bridging for joists. Clear 2 1/4-inch face tongued and grooved flooring. 2x4-inch wall and partition studs on 16-inch centers. Lath for lining all walls and ceilings. Clear A redwood bevel siding for outside walls. Clear outside finish 2x4-inch ceiling joists on 16-inch centers. 2x6-inch rafters on 24-inch centers. Roof sheathing laid tight. Best quality variegated slate surfaced hexagonal strip shingles. Check rail windows and frames six of glass in each with 26x28 inches 1st floor, 26x24 2nd floor. Kitchen and bathroom supplied with check rail window, six of glass in each with 26x16 inches. Top sash of all windows divided lights. Blinds for

two upper windows. Clear interior trim. Clear 6-inch two member baseboard. Door frames and doors six 2 feet 8 inches by 6 feet 8 inches, highest quality fir. French divided light front door, rear door upper half glass. Casement openings furnished where shown in plans. Attractive circle tread stairs as shown on plans. Grade entrance cellar stairs under main stairs. Two coats of paint for exterior. Stain and varnish for interior trim and doors. All nails, mortised locksets, hinges, double acting floor hinges and spring window bolts to complete house. Height of ceiling 9 feet 1st floor—8 feet 2nd floor. Roof 7/12 pitch. Boxed eaves 4 foot projection. Plans reversed without charge, see page 47.

First Floor Plan

Second Floor Plan



You take absolutely no chance in dealing with **The Aladdin Company**. Our guarantee not only covers the quality and quantity of materials but also their safe arrival at your station.



**The Mayflower** :: **MADE IN 3 SIZES**  
**PRICE OF SIZE 18' x 18'** **\$382** *And We Pay The Freight*



**T**HE MAYFLOWER brings happiness to thousands of families who do not require a larger home. Also, it permits the family of modest means to get into a snug, warm and strong little home at almost unbelievable little cost. This home is being put up by many owners who have had no experience in carpenter work. Our instructions with pictures explain every step. The Mayflower is shown below in four different plan arrangements and any one of the four plans can be furnished in your choice of three different sizes. The plans are of the 18x18-foot Mayflower Homes. The house can also be furnished in a 22x22-foot size or in a 26x26-foot size. If purchased 22x22 feet in size, each room would be two feet larger each way than as shown in our 18x18-foot plans. If purchased 26x26 feet in size, each room would be four feet larger each way than as shown in our 18x18-foot plans.

The size, 18x18 feet, is priced at **\$382** in Single Construction and at **\$456** in Double Construction.  
 The size, 22x22 feet, is priced at **\$489** in Single Construction and at **\$583** in Double Construction.  
 The size, 26x26 feet, is priced at **\$635** in Single Construction and at **\$749** in Double Construction.

The illustration of the Mayflower shows it erected with a 6x1-foot entrance hood and a 6x1-foot stoop with 4-foot wide steps. The hood can be furnished for **\$13** and the stoop and steps for **\$18** or any of our larger porches shown on other homes in our catalog can be purchased in preference if you desire and providing the width of the porch is not too great for the width of the Mayflower home in the size you have selected.

**Specifications, The Mayflower**

**Single Construction, Size 18x18 Feet**

6x6-inch built-up girder, 2x6 wall plates, 2x6-inch joists on 16-inch centers. Clear tongued and grooved flooring. 2x4-inch wall and partition studding on 16-inch centers. Lath for lining all walls and ceilings. Clear A redwood bevel siding for outside walls. Clear outside finish. 2x4 inch ceiling joists on 16-inch centers. 2x4-inch rafters on 24-inch centers. Roof sheathing laid tight. Best quality green slate surfaced roofing. Check roll windows and frames, size of glass in each sash 26x24 inches. Kitchen, size of glass in each sash 26x16 inches. Clear interior trim. Clear 6-inch sub member baseboard. Door frames and doors, size 2 feet 8 inches by 6 feet 8 inches, highest quality fir. Front and rear doors upper half glass. Cellar stairs furnished when shown on plans. Cased openings furnished where shown on plans. Two coats of paint for exterior. Stain and varnish for interior trim and doors. All nails, mortised

locksets, hinges, double acting dining room floor hinges and spring window bolts to complete house. Height of ceilings 8 feet. Roof 1/2 pitch. Eaves, 1 foot projection. **Size 22x22 feet.** The Specifications are the same for the 22-foot size except the floor joists are 2x8 inches on 16-inch centers. **Size 26x26 feet.** Specifications for the 26-foot size are the same as for the 22-foot size except rafters are 2x6 inches on 24-inch centers.

**Double Construction** takes the same specifications as single construction with the following additions: Sub-floor sheathing under finished floor with building paper to be placed between the two floors, outside wall sheathing under bevel siding with building paper to be placed between, sash weights, cord, pulleys and sash locks for all double sliding windows and additional nails for the above extra materials. Plans reversed without charge. See page 47.



**Mayflower No. 1**

**Mayflower No. 3**

**Mayflower No. 4**

**Mayflower No. 5**



**DIGNITY, Strength and Beauty**—all are evident from the most casual glance of the exterior of the Nantucket. Refinement in every detail is manifest. A more careful study of the outward appearance and the interior arrangement, bears out your first impression. Two plans are presented—one of two bedrooms—the other of three. Both are complete, compact and provide more than the usual number of good features desired in a modern home. Both plans give an exceptionally large living room and a well proportioned dining room. In both plans the kitchen is large enough to accommodate all necessary fixtures and furniture and small enough to reduce the work of meal preparing and serving to the minimum. Both plans isolate the bedrooms and bathroom from the living quarters of the house. Each bedroom has its closet. In the Number Two Plan an exceptional feature, rarely obtained in a one-story home, makes it possible to go from the kitchen to the bedrooms or bath, without passing thru the living room or dining room. The porch shown in the illustration is quoted separately. The Nantucket plans are furnished in both Single and Double Construction.

The price of the Nantucket No. 1 in single construction is **\$1322** and in double construction **\$1449**. The price of the Nantucket No. 2 in single construction is **\$1699** and in double construction **\$1855**. The pergola porch size 8x14 feet can be furnished for **\$89**. Specifications for both single and double construction given below.

### Specifications, The Nantucket

**Single Construction:** 6x8 built-up gilder, 2x6 wall plates. Floor joists 2x10 on 16-inch centers. Bridging. Clear 2 1/2-inch face tongued and grooved finish flooring. 2x4-inch wall and partition studing on 16-inch centers. Lath for lining all walls and ceilings. Plaster grounds. Clear A redwood bevel siding for outside walls. Clear outside finish. 2x4-inch ceiling joists on 16-inch centers. 2x6-inch rafters on 34-inch centers. 1-inch roof sheathing. Best quality variegated slate surfaced hexagonal strip shingles or 5 to 2 red cedar shingles for roof. Check-rail windows and frames size of glass in each sash 26x28-inch. Kitchen and bathroom supplied with check-rail windows, size of glass in each sash 26x16-inch, all top sash divided lights. Clear interior trim. Clear 6-inch two-member baseboard. Door frames and doors 2 feet 8 inches by 6 feet 8 inches. Front door size 3 feet by 7 feet—divided 15 lights. Rear door upper part glass. All doors highest quality fir. Cased openings as shown in plans. Cellar stairs and grade entrance. Two coats of paint for exterior. Stain and varnish for interior trim and doors. All nails, mortised lock-set, hinges, double acting floor hinges and sash cord, weight, pulleys and sash locks for windows.

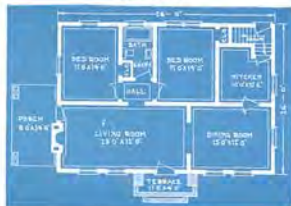
Height of ceiling 9 feet. Roof one-quarter pitch. Boxed eaves. Plans reversed without charge, see page 37.

**Double Construction** takes the same specifications as single construction with the following additions: Sub-floor sheathing under finished floor with building paper to be placed between the two floors, outside wall sheathing under bevel siding with building paper to be placed between and additional nails for the above extra materials. In double construction you can have your choice of either clear A redwood, bevel siding or extra Star-A-Star, 5 to 2 red cedar shingles for the outside walls at no difference in price.

### Plan No. 2

The Aladdin Co. guarantees the quantity and quality of all materials and their safe arrival at destination.

Plan No. 1



Plan No. 2





**T**HERE is a charm about the Fairfield that attracts your instant attention. The home is so distinctly attractive that it has been necessary for us to design it in two different plans; one provides for a 26-foot width home and the other for a 28-foot width home. This is to adapt the home to lots of different frontage. In both of the Fairfield Plans a grade entrance addition is placed off the rear of the kitchen. This permits entrance direct to the kitchen or to the cellar, from the outside of the house. This addition is really a part of the house itself and is included with the home at the price quoted. In the Number One Plan the living room extends across the entire front of the house. Two bedrooms are provided for. An extra bedroom 10x12 feet in size could be obtained in this plan if desired by taking the space from the end of the living room. This would leave the living room 16x12 feet in size and would give an arrangement and number of rooms practically the same as in the Number Two Plan. Three bedrooms are arranged in the Number Two Plan. The porch is an integral part of the home and is included in the price. The Fairfield is furnished in both single and double construction.

The price of the Fairfield No. 1 in single construction is \$1514 and in double construction \$1658.

The price of the Fairfield No. 2 in single construction is \$1587 and in double construction \$1739.

Specifications for both single and double construction are given below.

### Specifications, The Fairfield

**Single Construction:** 6x8 built-up girder, 2x6 wall plates. Floor joists 2x8 on 16-inch centers. Bridging. Clear 2 1/2-inch face tongued and grooved finish flooring. 2x4-inch wall and partition studding on 16-inch centers. Lath for lining all walls and ceilings. Plaster grounds. Clear A Redwood level siding for outside walls. Clear outside finish. 2x4-inch ceiling joists on 16-inch centers. 2x6-inch rafters on 24-inch centers. 1-inch roof sheathing. Variegated slate surfaced, hexagonal strip shingles or 5 to 2 red cedar shingles for roof. Check rail windows and frames, size of glass in each sash 26x78 inches,

Plan No. 1



Plan No. 2

kitchen and bathroom supplied with check rail windows. Size of glass in each sash 26x16 inches. Clear interior trim, clear 6-inch two-member base board. Door frames and doors 2 feet 6 inches x 6 feet 8 inches. Outside front door 3 feet x 7 feet. Front and grade doors upper part glass. All doors highest quality Fir. Cold openings where shown in plans. Cellar stairs and grade entrance. Two coats of paint for exterior. Sinks and vanities for interior trim and doors. All walls, exterior lock-ups, hinges, double acting floor hinges and sash cord, weights, pulleys and sash cords for windows. Height of ceiling 9 feet. Roof one-quarter pitch. Exposed eaves 2-foot projection. Plans reversed without charge. See page 47.

**Double Construction** takes the same specifications as single construction with the following additions: Sub-floor sheathing under finished floor with building paper to be placed between the two floors, outside wall sheathing under level siding with building paper to be placed between, and additional nails for the above extra materials. In double construction you can have your choice of either Clear A Redwood level siding or Extra Fine-A-Side, 5 to 2 Red Cedar Shingles for the outside walls of no difference in price.





**T**HIS quaint design is as original a home as was ever designed! The Newport stands out in a manner that commands instant attention from the seeker of a home combining convenience and practicability with individuality of design. These features are admirably and abundantly supplied in the Newport. Two plans of the Newport are presented. Built in either plan the same exterior is obtained as shown in our illustration. While the Number One and Number Two Plans both provide for the same number of rooms, the rooms of the Number Two home are larger, and more and larger closets are conveniently arranged. Both plans will interest you. You cannot help being particularly pleased with the east closet off from the living-room, the extra closet off from the hall and the refrigerator space outside the kitchen as the head of the cellar stairs of the Number Two Plan. The front and side porches shown on the plans of both homes are included at the price quoted. In the Number Two Plan the porch is off the right side of the home as shown in the illustration above. In the Number One Plan the porch is off the left side of the home. The porches are furnished by us without the floors with the intention that you will secure material locally and build the floors of concrete, brick or tile. The Newport is furnished in both single and double construction.

The price of the Newport No. 1 in single construction is **\$1198** and in double construction **\$1315**.

The price of the Newport No. 2 in single construction is **\$1407** and in double construction **\$1627**.

Specifications for both single and double construction are given below.

### Specifications, The Newport

**Single Construction:** 6x8 built-up gables, 2x6 wall plates. Floor joists 2x8 on 16-inch centers. Bridging. Clear 2 1/4-inch (over tongue and groove finish flooring. 2x4-inch wall and partition standing on 16-inch centers. Lath for lining all walls and ceilings. Plaster grounds. Clear A Redwood level siding for outside walls. Clear outside finish. 2x4-inch ceiling joists on 16-inch centers. 2x6-inch rafters on 24-inch centers. 1-inch roof sheathing. Variegated slate surfaced hexagonal strip shingles or 3 to 2 Red Cedar shingles for roof. Check-rail windows and frames size of glass in each sash 26x16 inches. Kitchen and bathroom supplied with check-rail windows, size of glass in each sash 26x16 inches, all top sash divided lights. Clear interior trim, clear 6-inch two-member base-board. Door frames and doors 2 feet 8 inches x 6 feet 8 inches. Outside front door 3 feet x 7 feet. Front door

divided lights. Rear door upper part glass. Small openings furnished where shown in plans. Celler stairs and grade entrance. Two coats of paint for exterior. Stain and varnish for interior trim and doors. All nails, mortised lock-sets, hinges, double acting floor hinges and sash cord, weights, pulleys and sash locks for windows. Height of ceiling 9 feet. Roof eave-counter pick. 3x6-eave. Plans reversed with best change, see page 67.

**Double Construction** takes the same specifications as single construction with the following addition: Sub-floor sheathing under finished floor with building paper to be placed between the two floors, outside wall sheathing under level siding with building paper to be placed between and additional nails for the above extra materials. In double construction you can have your choice of either Clear A Redwood level siding or Extra Star-A-Scar, 3 to 2 Red Cedar shingles for the outside walls at the difference in price.

Plan No. 1



Plan No. 2



The Carlton :: An Unusual Design :: Price **\$1512** *And We Pay The Freight*  
 Readi Cut



**T**HE CARLTON is a type of home that will be as modern and up-to-date fifty years from now as it is today. Without being gaudy it is attractive—without being elaborate it is ample. No attempt has been made to embellish the home. Nothing could be added without really destroying its beauty. In short, the Carlton seems to stand complete. The porch, as will be noted, is eight feet in depth and extends across the entire width of the house. It is roofed by a continuation of the main house roof and is included with the home at the price quoted. The interior arrangement provides all that can be desired in a home of these proportions. The First Floor, in addition to the usual living room, dining room and kitchen, includes one bedroom, opening off from the living room. The second floor has two good size bedrooms, each with a large closet and the dormer provides a large bathroom. The Carlton is furnished in both Single and Double Construction.

The price of the Carlton in Single Construction is **\$1512** and in Double Construction **\$1681**.

Specifications for both single and double construction are given below.

### Specifications, The Carlton

**Single Construction:** 6x8 built-up girder, 2x6 wall plates; 1st and 2nd floor joists 2x8 on 16-inch centers. Bridging. Clear 2 1/4-inch face tongued and grooved finish flooring. 2x4-inch wall and partition studding on 16-inch centers. Lath for lining all walls and ceilings. Plaster grounds. Clear A redwood bevel siding for outside walls. Clear outside finish. 2x4-inch ceiling joists. 2x6-inch rafters on 24-inch centers. 1-inch roof sheathing. Variegated, slate surfaced hexagonal strip shingles or 5 to 2 red cedar shingles for roof. Check-rail windows and frames, size of glass in each sash 26x28 inches 1st floor, 26x24 inches 2nd floor. Kitchen supplied with check-rail windows, size glass in each sash 26x16 inches. Bathroom windows swinging casements, glass size 18x24 inches. Clear interior trim. Clear 6-inch two-member baseboard. Door frames and doors 2 feet 8 inches by 6 feet 8 inches. Outside front door 3 feet by 7 feet. Front door three quarter length glass. Rear door upper part glass. All doors highest quality fir. Casement openings where shown in plans. Circle tread stairs as shown on plan. Cellar stairs and grade entrance under main stairs. Two coats of paint for exterior. Stain and varnish for interior trim and doors. All nails, mortised lock-sets, hinges, double acting floor hinges and sash cord, weights, pulleys and sash locks for windows. Height of ceiling 9 feet first floor, 8 feet second floor sloping to 6 feet 9 inches at extreme ends of bedrooms. Roof five-twelfths pitch. Exposed eaves 2 feet projection. Plans reversed without charge. See page 47.

**Double Construction** takes the same specifications as single construction with the following additions: Sub-floor sheathing under finished floor with building paper to be placed between the two floors, outside wall sheathing under bevel siding with building paper to be placed between and additional nails for the above extra materials. In double construction you can have your choice of either clear A redwood bevel siding or extra Star-A-Star, 5 to 2 red cedar shingles for the outside walls at no difference in price.

First Floor Plan



Second Floor Plan



The Kenmoor :: A Two-Story Bungalow :: Price **\$1885** And We Pay The Freight



WHILE distinctly a bungalow in type, the Kenmoor is a two-story house of liberal proportions. Notice the straight line dormer with exposed eaves in exact keeping with the eaves of the front porch—the extended bay window with roof and brackets, breaking the gable end. All rooms are spacious and well lighted. Ascending to the second floor by the semi-open stairs at the end of the living room you enter a central hall from which easy access is gained to each of the three large bedrooms and bath. A roomy clothes closet is provided off from each bedroom. The Kenmoor is quoted in both single and double construction. The price of the Kenmoor in single construction is **\$1885** and in double construction **\$2055**. Specifications for both single and double construction are given below.

**Specifications, The Kenmoor**

**Single Construction:** oak built-up girder, 2x6 wall plates; 1st floor joists 2x10 on 16-inch centers; 2nd floor joists 2x8 on 16-inch centers; Bridging clear 2 1/2-inch face tongue and grooved finish flooring. 2x4-inch wall and partition studding on 16-inch centers. Lath for holding all walls and ceilings. Plaster Grounds. Clear A Redwood Bevel Siding for outside walls. Clear outside finish. 2x4-inch ceiling joists; 2x8-inch rafters on 24-inch centers; 1-inch

roof sheathing; Variegated, slate surfaced, hexagonal strip shingles or 5 to 2 red cedar shingles for roof. Cluck-rail windows and frames, size of glass in each sash 26x28 inches 1st floor, 26x24 inches 2nd floor. Kitchen and bathroom supplied with check-rail windows, size of glass in each sash 26x16 inches. Side windows front and rear bedrooms swinging casements. Clear interior trim, clear 6-inch two-membered frames and doors 2 feet 8 inches by 6 feet 8 inches. Outside front door 3x7 feet, front door three quarter length glass, grade door upper part glass. All doors highest quality fir. Cased openings where shown in plans. Circle tread stairs as shown on plan. Cellar stairs and grade entrance under main stairs. Two coats of paint for exterior. Stain and Varnish for interior trim and doors. All nails, mortised lock-sets, hinges, double acting floor hinges and sash cord, weights, pulleys and sash locks for windows. Height of ceiling 9 feet first floor, 8 feet second floor sloping to 6 feet 6 inches at extreme front and rear walls. Roof over-slab pitch. Eaves over eaves 3 feet projection. Plans reversed without charge. See page 47.

**First Floor**

**Second Floor**



Remember Aladdin pays the freight and guarantees the safe arrival of all materials.

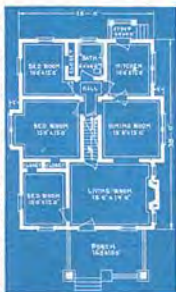
**Double Construction** takes the same specifications as single construction with the following additions: Sub-floor sheathing under finished floors with building paper to be placed between the two floors, outside wall sheathing under bevel siding with building paper to be placed between, and additional nails for the above extra materials. In double construction you can have your choice of either clear A redwood bevel siding or extra Star-A-Star, 5 to 2 red cedar shingles for the outside wall at no difference in price.

The Sherbrooke :: A Home With Appeal :: Price **\$1788** And We Pay The Freight



**T**HE SHERBROOKE is surely a home with appeal. Excellent use has been made of the best and most pleasing lines in bungalow architecture in designing this home. You are offered your choice of two plans on the Sherbrooke home, Plan Number One is a one-story house with attic space available. At the price quoted on this home we furnish flooring to cover the same area as is occupied by the second floor rooms of the Number Two Plan. The Number Two Plan has one less bedroom on the first floor but two bedrooms are arranged on the second floor. In all other respects the two plans are practically identical. To save space, the cellar stairway leads down under the stairway to the second floor. The cellar stairway is conveniently accessible from the kitchen by way of the hall. Well proportioned rooms with a great choice of furniture arrangement is just another of the many appeals the Sherbrooke will make to you. The porch roof runs back into the roof of the house, tending to create the impression that it is a part of the house itself and not a separate addition. It is included with the home at the price quoted as is also the small stoop in the rear. The Sherbrooke is furnished in both single and double construction. The price of the Sherbrooke No. 1 in single construction is **\$1788** and in double construction **\$1938**. The price of the Sherbrooke No. 2 in single construction is **\$1927** and in double construction **\$2077**. Specifications for both single and double construction are given below.

The Sherbrooke No. 1

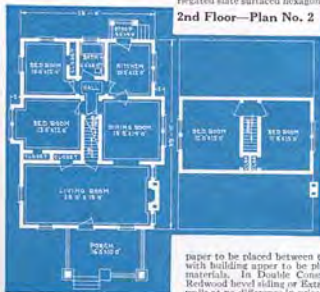


**Specifications, The Sherbrooke**

**Single Construction:** 6x8 built-up girder, 2x6 wall plates, 1st floor joists 2x10 on 16-inch centers, 2nd floor joists 2x8 on 16-inch centers. Bridging, Clear 2 1/4-inch face tongue and grooved finish flooring, 2x4-inch wall and partition studding on 16-inch centers. Lath for lining all walls and ceilings. Plaster grounds. Clear A Redwood

Bevel Siding for outside walls. Clear outside finish. 2x4-inch ceiling joists. 2x6-inch rafters on 24-inch centers, 1-inch roof sheathing. V-ripped slate surfaced hexagonal strip shingles or 5 to 2 red cedar shingles for roof.

The Sherbrooke No. 2



2nd Floor—Plan No. 2

Check-rail window frames, size of glass in each sash 26 x 28 inches 1st floor, 26x24 inches 2nd floor. Kitchen and bath-room supplied with check-rail windows, size of glass 26x16 inches. Clear interior trim. Clear 6-inch two-member base-board. Door frames and doors 2 feet 8 inches x 6 feet 8 inches. Outside front door 3 feet x 7 feet. Front door three quarters length glass. Rear door upper part glass. All doors highest quality Fir. Cased openings where shown in plans. Stairs to second floor. Cellar stairs. Stain and varnish for interior trim and doors. All nails, mortised lock-sets, hinges, double acting floor hinges and sash cord, weights, pulleys and sash locks for windows. Height of ceiling 9 feet first floor, 8 feet second floor sloping to six feet two inches at extreme front and rear walls of second floor bedrooms of Number Two Plan. Roof one-quarter pitch. Exposed eaves 3 feet projection. Plans reversed without charge. See page 47.

**Double Construction** takes the same specifications as single construction with the following additions:

Sub-floor sheathing under finished floor with building paper to be placed between the two floors, outside wall sheathing under bevel siding with building paper to be placed between, and additional nails for the above extra materials. In Double Construction you can have your choice of richer Clear A Redwood bevel siding or Extra Star-A-Star, 5 to 2 Red Cedar Shingles for the outside walls at no difference in price.

# Extra Features Obtainable for Aladdin Houses

## HOME CRAFT BOOKCASE ARCH



This home arch in combination of limes and in every case has given perfect satisfaction. The cases are 2 1/2 feet wide, the columns 4 inches apart. Set on any style with hardware and glass doors, or stone. Bookcase Arch.

3C-6.....\$66.00

## SPECIAL DOORS

The outside front door furnishes light to most of our houses in a standard with door and has one leaf of glass about 24 inches square in the top section. If the Aladdin house you desire is provided with this design of front door, it will show in the illustration of the house at the foot of the page. With such houses, if you wish either our No. 10 or No. 14 door (labeled in place of the regular outside front door, the change can be made for \$3.50 additional).



No. 14

These doors are 6 1/2 feet 8 inches high. The No. 14 door can also be furnished in larch for the inside arch openings of any house for \$18.50 per pair. This style includes not only the pair of doors but the material for between the doors, lock set, two pair of fasteners and bottom rail and stainless version. When ordering special doors please specify the style number of the door desired.



No. 10

## CLOSET DOORS

Closet doors are not shown, or included in our plans in a great majority require the doors omitted, but the exact manner they fall so they can use a curtain on the closet. If closet doors are desired they can be supplied at \$5.25 each, complete with mortise lock set and hinges.



## WE FURNISH TWO PANEL INTERIOR DOORS

Aladdin interior doors are built of Clear and Knotless Oregon Fir and are furnished in a two-panel design as shown. They are beautifully grained, particularly in the panels the beautiful grain of the wood is brought out in perfection. The construction is of the very best and the doors come to you carefully finished to a silky smooth finish. All doors are mortised to receive the lock set covers, the door furnished for use between the kitchen and dining room. Double Acting Hardware is furnished for this door, permitting it to swing both ways.

You take absolutely no chance in dealing with The Aladdin Company. Our justice not only covers the quality and quantity of materials but also their safe arrival at your station.

## ROOFING OR SHINGLES

The specifications as printed in this catalog for each Aladdin house will inform you whether green, slate surfaced, asphalt roofing or variegated, slate surfaced, hexagonal strip shingles are provided at the price quoted. The following prices will give you the additional cost of hexagonal strip shingles if desired for any house not priced with roofing.

Adams.....	\$36.00	Potomac.....	\$54.00
Bluebird.....	44.00	Sussex.....	26.00
Carroll.....	65.00	Victory.....	52.00
Colfax.....	32.00	Walden.....	42.00
Columbia.....	28.00	<b>GARAGES</b>	
Conrad Gates No. 1.....	50.00	Cadillac 18x16.....	18.00
Conrad Gates No. 2.....	54.00	Cadillac 18x18.....	20.00
Conrad Gates No. 3.....	56.00	Cadillac 18x20.....	22.00
Chambers.....	38.00	Ford 8x14.....	8.00
Linden No. 1.....	40.00	Ford 10x14.....	12.00
Linden No. 2.....	42.00	Ford 10x18.....	14.00
Linden No. 3.....	45.00	Ford 12x18.....	15.00
Maryland.....	32.00	Linden 10x18.....	22.00
Mayflower 18x18.....	20.00	Linden 20x20.....	24.00
Mayflower 21x21.....	25.00	Lincoln 12x18.....	14.00
Mayflower 26x26.....	38.00	Studebaker 12x18.....	16.00
Platinum.....	40.00	Studebaker 12x20.....	18.00

The following figures give you the amount you can deduct from the price of the Aladdin houses regularly furnished with hexagonal strip shingles, providing asphalt roll roofing is desired.

Carlton.....	\$63.00	Rowland.....	\$38.00
Fairfield No. 1.....	76.00	Sherburne No. 1.....	80.00
Valetic No. 2.....	75.00	Sherburne No. 2.....	80.00
Holland.....	52.00	Trouton.....	36.00
Inverness.....	40.00	Vermont.....	36.00
Jersey.....	40.00	Virginia.....	44.00
Kemmer.....	74.00	<b>GARAGES</b>	
Larchmont.....	28.00	Hudson 20x18.....	20.00
Lindbergh No. 1.....	48.00	Hudson 20x20.....	22.00
Lindbergh No. 2.....	50.00	Hudson 26x18.....	26.00
Malden.....	26.00	Hudson 26x20.....	28.00
Maryland.....	26.00	Oakland 15x16.....	12.00
Navasack No. 1.....	58.00	Oakland 12x18.....	14.00
Navasack No. 2.....	82.00	Oakland 13x20.....	16.00
Newport No. 1.....	50.00	Pontiac 12x16.....	12.00
Newport No. 2.....	66.00	Pontiac 12x18.....	14.00
Norwood.....	42.00	Pontiac 12x20.....	15.00

The shingles are the best quality, hexagonal butt, asphalt strip shingles. They are self-sealing. The slate surfacing is not artificially colored, but is the natural color of the variegated, blending colors.

The roofing is finished in rolls and is of the same high quality as the shingles. It gives a roof all of one color. The green slate surfacing is the natural color of the slate.

## CELLAR WINDOWS

For wall opening 3 feet wide by 2 feet high, complete with frame, glass sash and hardware..... \$3.00

For wall opening 3 feet wide by 2 feet 8 inches high, complete with frame, glass sash and hardware..... \$3.75

It is not necessary to forward the cellar window before the house is shipped, for by leaving the wall openings described above the frames can be set in after the foundation has been erected.

## GRADE CELLAR ENTRANCE No. 2

This addition size 7x5 feet is designed to afford a grade cellar entrance and can be attached to any Aladdin house. All material necessary for the complete addition is included together with steps to kitchen and access to basement. Price of this addition in single construction \$70, double construction \$75.



## FOUNDATION POSTS

We can furnish with your house shipment, wooden foundation posts 8 feet long at \$1.00 per post, or posts 4 feet long at 50 cents per post.



### Specifications—The Norwood

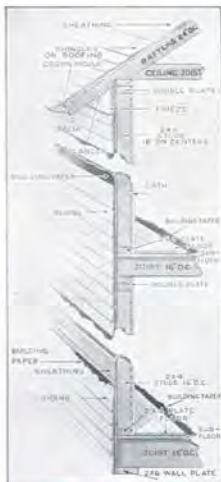
**Single Construction:** 6x8-inch built-up girder, 2x6-inch wall plates, 2x8-inch joists on 16-inch centers 1st and 2nd floors. Bridging. Clear 2 1/4-inch face tongued and grooved flooring. 2x1-inch wall and partition studs on 16-inch centers. Lath for lining all walls and ceilings. Clear A redwood bevel siding for outside walls. Clear outside finish, 2x4-inch ceiling joists, 2x6-inch rafters on 24-inch centers. Roof sheathing laid tight. Best quality variegated slate surfaced hexagonal strip shingles. Check-rail windows and frames, size of glass in each sash 26x24 inches, 1st floor and 2nd floors. Bathroom and kitchen supplied with check-rail window, size of glass in each sash, 26x16 inches, all upper sash divided lights. Blinds as shown in illustration. Clear interior trim. Clear 6-inch two member baseboard. Door frames and doors, size 2 feet 8 inches by 6 feet 8 inches, high quality fir. French doors for front and side of living room, grade door upper half glass. Stairs as shown on plan. Cellar stairs under main stairs. Cased openings furnished where shown in plans. Two coats of paint for exterior. Stain and varnish for interior trim and doors. All nails, mortised locksets, hinges and double acting floor hinges, sash weights, sash cord, sash pulleys and sash locks to complete house. Height of ceilings 8 feet 6 inches 1st floor, 8 feet 2nd floor with 5 feet 6 inches at lowest point on side walls. Main Roof 1/2 pitch. Plans reversed without charge. See page 47.

**Double Construction** takes the same specifications as single construction with the following additions: Sub-floor sheathing under finished floor with building paper to be placed between the two floors, outside wall sheathing under bevel siding with building paper to be placed between and additional nails for the above extra materials.

### Specifications—The Holland

**Single Construction:** Size 30x24. 6x8-inch built-up girder, 2x6 wall plates, 2x8-inch joists on 16-inch centers 1st and 2nd floors. Bridging. Clear 2 1/4-inch face tongued and grooved flooring. 2x4-inch wall and partition studs on 16-inch centers. Lath for lining all walls and ceilings. Clear A Redwood bevel siding for outside walls. Clear outside finish, 2x4-inch ceiling joists on 16-inch centers, 2x6-inch rafters on 24-inch centers. Roof sheathing laid tight. Best quality Variegated slate surfaced hexagonal strip shingles. Check-rail windows and frames, size of glass in each sash 26x28 inches, 1st floor. 26x24 inches, 2nd floor. Bath room and kitchen supplied with check-rail window, size of glass in each sash, 26x16 inches, all upper sash divided lights. Clear interior trim. Clear 6-inch two member baseboard. Door frames and doors, size 2 feet 8 inches by 6 feet 8 inches, high quality fir. Front door divided 15 lights, side door upper half glass. Attractive circle tread stairs as shown on plan. Cellar stairs under main stairs. Cased openings furnished where shown in plans. Two coats of paint for exterior. Stain and varnish for interior trim and doors. All nails, mortised locksets, hinges and double acting floor hinges, sash weights, sash cord, sash pulleys and sash locks to complete house. Height of ceilings 9 feet 1st floor, 8 feet 2nd floor. Ceilings on 2nd floor are full height, not sloped. Main roof 1/2 pitch. Boxed eaves. Plans reversed without charge. See page 47.

**Double Construction** takes the same specifications as single construction with the following additions: Sub-floor sheathing under finished floor with building paper to be placed between the two floors, outside wall sheathing under bevel siding with building paper to be placed between and additional nails for the above extra materials. In double construction 5 to 2 Red Cedar shingles can be had in place of bevel siding for either part or all of exterior walls.



(Continued from page 27)

rear door upper half glass. Cased openings furnished where shown in plans. Cellar stairs furnished. Two coats of paint for exterior. Stain and varnish for interior trim and doors. All nails, mortised locksets, hinges, double acting floor hinges, and spring window bolts to complete house. Height of ceiling 8 feet 6 inches. Main roof 1/2 pitch.

**Double Construction** takes the same specifications as single construction with the following additions: Sub-floor sheathing under finished floor with building paper to be placed between the two floors, outside wall sheathing under bevel siding or shingles with building paper to be placed between, sash weights, cord, pulleys, sash locks and additional nails for the above extra materials. Plans reversed without charge. See page 47.

Typical Aladdin Kitchen arranged with Aladdin equipment for our Pilgrim design. The kitchen in every Aladdin house can be made as attractive as the Pilgrim kitchen. Send for Aladdin Merchandise Catalog describing these and other fixtures.

We are sure we can save you considerable money on all items shown in our Merchandise Catalog. All fixtures described within its pages are shipped direct from the manufacturer to you. This eliminates handling costs, jobbers' profits, etc., usually included in the retailers' quotations. This saving we pass on to you.



# ALADDIN *Money Saving* GARAGES *Readi Cut*

The Aladdin garages shown on these pages cover the demand for 95 per cent of all garages built. Aladdin garages are staunchly built of high grade materials. Lumber is all cut to fit. A couple of days' time will erect and finish one. Prices quoted are astonishingly low and include freight paid to your railroad station.

## *The Ford*

The Ford is made in four standard sizes. The 5x14 size being the smallest and will admit a Ford touring car with top either up or down.

- Ford No. 1**— 8 ft. wide, 14 ft. deep...\$ 87 Freight Paid  
**Ford No. 2**—10 ft. wide, 16 ft. deep...\$107 Freight Paid  
**Ford No. 3**—10 ft. wide, 18 ft. deep...\$116 Freight Paid  
**Ford No. 4**—12 ft. wide, 18 ft. deep...\$133 Freight Paid



## *The Cadillac*

An attractive two-car garage, having four swinging doors.

- Cadillac No. 1**—  
18 ft. wide, 16 ft. deep. \$188 Freight Paid  
**Cadillac No. 2**—  
18 ft. wide, 18 ft. deep. \$199 Freight Paid  
**Cadillac No. 3**—  
18 ft. wide, 20 ft. deep. \$212 Freight Paid

## *The Lincoln*

Same design as The Cadillac, except that it is 20 feet wide instead of 18.

- Lincoln No. 1**—  
20 ft. wide, 18 ft. deep. \$214 Freight Paid  
**Lincoln No. 2**—  
20 ft. wide, 20 ft. deep. \$225 Freight Paid

## Specifications for Ford, Studebaker, Cadillac and Lincoln Garages

paint for two coats on exterior. Materials readi-cut and complete blue prints showing every step of erection. All garages shown are furnished without floors, as practically all auto owners prefer to build floor of concrete or cinders. If doors with glass in top section like shown in Pontiac are desired, in place of solid doors shown in above garages, add \$8 for each pair of doors to price of garage.

## *The Studebaker*

The Studebaker will take the largest car on the market with ample room at sides for storage and working.

- Studebaker No. 1**—  
12 ft. wide, 16 ft. deep...\$132 Freight Paid  
**Studebaker No. 2**—  
12 ft. wide, 18 ft. deep...\$141 Freight Paid  
**Studebaker No. 3**—  
12 ft. wide, 20 ft. deep...\$152 Freight Paid



Sills, 4x4 in.; studding, 2x4 in., 24-inch centers; drop siding for side walls; rafters, 2x4 in., 24 in. on centers; roof, one-quarter pitch; exposed eaves, one foot projection. Roof sheathing, laid tight. Best quality green slate surfaced roofing for roof. Hardware, nails and

## Summer Cottages from \$180 to \$745 *And We Pay The Freight*



The summer cottage illustrated is one of our most popular designs known as The Ocean Park and is manufactured in three sizes. The 18x26-foot size sells for \$423, the 18x30-foot size for \$473 and the 20x36-foot size for \$595. Remember, we pay the freight.

Aladdin Summer Cottages are single walled, exposed studding, single matched ceiling partitions, with rooms open to the rafters.

A separate booklet is ready to be mailed to you, if you are interested in summer cottages.

# You Can Build Them Yourself

## *The Pontiac*

An English Type garage that will harmonize with a great many present-day homes. The doors are 8 feet wide and are glazed ready to hang.

**Pontiac No. 1—**  
12 ft. wide, 16 ft. deep.....\$159 Freight Paid

**Pontiac No. 2—**  
12 ft. wide, 18 ft. deep.....\$169 Freight Paid

**Pontiac No. 3—**  
12 ft. wide, 20 ft. deep.....\$180 Freight Paid



## *The Oakland*

An attractive garage manufactured in three sizes to meet all requirements. Plenty of room for car and work bench.

**Oakland No. 1—**  
12 ft. wide, 16 ft. deep.....\$169 Freight Paid

**Oakland No. 2—**  
12 ft. wide, 18 ft. deep.....\$179 Freight Paid

**Oakland No. 3—**  
12 ft. wide, 20 ft. deep.....\$190 Freight Paid



## *The La Salle*

A pergola type garage that will add to the beauty of your property.

**LaSalle No. 1—**  
18 ft. wide, 16 ft. deep.....\$192 Freight Paid

**LaSalle No. 2—**  
18 ft. wide, 18 ft. deep.....\$203 Freight Paid

**LaSalle No. 3—**  
18 ft. wide, 20 ft. deep.....\$215 Freight Paid

**LaSalle No. 4—3 Car**  
26 ft. wide, 18 ft. deep.....\$269 Freight Paid

**LaSalle No. 5—3 Car**  
26 ft. wide, 20 ft. deep.....\$279 Freight Paid



## *The Hudson*

Made in both 2 and 3-car sizes. The three-car garage will of course have 3 pairs of doors.

**Hudson No. 1—**  
20 ft. wide, 18 ft. deep.....\$252 Freight Paid

**Hudson No. 2—**  
20 ft. wide, 20 ft. deep.....\$267 Freight Paid

**Hudson No. 3—3 Car**  
26 ft. wide, 18 ft. deep.....\$310 Freight Paid

**Hudson No. 4—3 Car**  
26 ft. wide, 20 ft. deep.....\$327 Freight Paid



### Specifications for Pontiac, Oakland, La Salle and Hudson Garages

Sills 4x4 inches, studding 2x4 inches, 24-inch centers, 6-inch drop siding or 8-inch bevel siding for side walls; can be constructed with bevel corners as shown or with corner boards. Rafters 2x4 inches, 24-inch centers; roof one-half pitch on all except the LaSalle which has flat roof that slopes to rear. Roof sheathing laid tight. Best quality variegated slate surfaced hexagonal strip shingles for roofs except La Salle which is supplied with slate surfaced roofing on account of construction. Swinging doors, glass in top, each pair doors eight feet wide. Windows shown are swinging casements, size of glass in sash 18x24 inches. Hardware for doors and windows, nails and paint for two coats on exterior. Materials ready-cut and complete blueprints showing every step of erection. All garages shown are furnished without floors, as practically all auto owners prefer to build floor of concrete or cinders.

# How Aladdin Saves You Money

## The Aladdin Plan

THE Aladdin Plan of home building has been in successful operation for over twenty years. The whole purpose of the plan is to help builders of modest homes.

Its first object and principal benefit, is to save money for builders of modest homes.

The Aladdin Plan has saved \$200, \$300, \$500, \$800—\$1200 and even more money on the individual homes of thousands of home builders.

Our home builder customers write us after finishing their homes and tell us these things.

They tell us how we helped them to buy their materials for less than their local lumber dealer would sell them.

They tell us how much better our certified lumber is than they could get from their local dealers.

They tell us how strong their homes are, how when they are, how convenient the room arrangements are, and how pretty they look when finished.

## The Aladdin Company

And these customers of ours tell us how pleased they are with all their dealings with us.

And, really, we are most pleased when they say this, for the Aladdin people are human. We are just ordinary people whose life work, life experiences are devoted to home building, devoted to making home building simpler, more economical, easier and more pleasant for our customers.

Every stockholder in The Aladdin Company is a worker in the company. We are all interested in every customer and we are all interested in knowing that every customer is satisfied.



HOME OFFICES THE ALADDIN CO.

Aladdin Homes are the original and first ever sold where the materials were all prepared in the mill, cut to fit and ready to be nailed in place when the house is being built. The ready-cut house industry was founded by Aladdin—by W. J. and G. E. Sovereign and the present workers, in The Aladdin Company.

ers, in The Aladdin Company.

*Tens of Thousands of American families are living in Aladdin houses. For over twenty years this organization has devoted its energies, its brains and its experience to making home building simpler, easier and less expensive. The Savings Aladdin offers you, the Service Aladdin offers you and the Safety Aladdin offers you are completely explained on pages 44, 45, 46 and 47 of this book.*

**The ALADDIN** Satisfaction, or your money back, **Guaranty** is the soundest guaranty ever written. When this guaranty is

backed by a company whose assets run into the millions you are assured of absolute safety in all your dealings. Aladdin guarantees the quantity and quality of all materials and their safe arrival at destination. The Aladdin Company guarantees you satisfaction or your money back in every transaction with us.

**Over Twenty** The houses shown in **Years of** this book are the best **Experience** we have planned in our many years of experience. We have learned from furnishing homes for thousands of families, what the majority desire and require. Most designs have several different floor plan arrangements to suit your family and your tastes. We have designed these homes and priced them so that you can get into a home at the lowest possible cost, or you can have added values like porches, kitchen cabinets and other luxuries and necessities. You can buy as much or as little as you like. We want to satisfy you exactly.

— saves about \$18.00 out of every \$100.00 worth of lumber ordinarily used in building your home. Nine-tenths of all lumber coming out of the forests are in 8-foot, 10-foot, 12-foot, 14-foot and 16-foot lengths. When you want to use other lengths, you have to pay more money for the same quantity and quality. Aladdin designs houses to use standard lengths. That's the economy of standard parts and that's the same kind of manufacturing economy that enables automobiles to be manufactured so cheaply. And that is what enables us to put in higher quality certified lumber at lower prices. Rapid, automatic machinery handles this lumber so swiftly, so accurately and so perfectly, that one man at a machine in our mills will cut as much as nearly a hundred carpenters can in the same length of time. And you get the benefit of this saving.

**How ALADDIN** Now let us tell you how we **Saves You** save you money.

**Money** The ready-cut plan avoids wasting lumber when building

— saves about \$18.00 out of every \$100.00 worth of lumber ordinarily used in building your home. Nine-tenths of all lumber coming out of the forests are in 8-foot, 10-foot, 12-foot, 14-foot and 16-foot lengths. When you want to use other lengths, you have to pay more money for the same quantity and quality. Aladdin designs houses to use standard lengths. That's the economy of standard parts and that's the same kind of manufacturing economy that enables automobiles to be manufactured so cheaply. And that is what enables us to put in higher quality certified lumber at lower prices.

Rapid, automatic machinery handles this lumber so swiftly, so accurately and so perfectly, that one man at a machine in our mills will cut as much as nearly a hundred carpenters can in the same length of time. And you get the benefit of this saving.

The Aladdin system of cutting the lumber in the mill saves about \$30.00 out of every \$100.00 worth of carpenter labor—as against the old system of measure, try, cut and fit on the job.





**Twenty Feet of Lumber from a Sixteen-Foot Board**

Think of taking a 6-inch board sixteen feet long and getting twenty feet of 6-inch board out of it!

Think of applying this system of saving throughout all the lumber used in building your house!

Think of your own good money it saves!

Think of your money this system saves, for your house is priced to you in exactly the number of feet of lumber going into it.

To eliminate waste by scientific planning, designing and cutting of lumber is to save your money from the waste pile.

W. J. Sovereign, president of The Aladdin Company, conceived this tremendous thought, originated, perfected, and established the system.

The principle has been so thoroughly established through the success of The Aladdin Company, that it is now accepted and approved by lumbermen, contractors, engineers and scientists.

**Sturdy, Honest Lumber Makes Sturdy, Honest Homes**

Early in its history, The Aladdin Company started to improve the quality of lumber that had been the custom to put into modest homes. It started to furnish beautiful, clear lumber for the doors and interior woodwork. And ever since, it has devoted its efforts to improving its houses. It feels and believes that the modest home should have as good quality as the biggest homes. The beautiful, velvety-grained Oregon fir and yellow pine used in Aladdin homes is the finest coming out of the forests. It takes the handsomest stain, oils and varnish and holds the coloring permanently. Aladdin heat seasoned certified lumber is dehydrated by the dry steam kiln process, preventing warping, swelling or shrinking.

The paints furnished are standard high quality—the beautiful brushed brass hardware and locksets finish off the woodwork attractively. Our roofing is made by one of the largest companies in the country and is of the highest quality. Pleasure and pride can't help but come to you when you know how good a home you have built, and especially when you have secured all these good things and saved a lot of money too.

Some people will tell you not to build an Aladdin house. But most of them will be people who will lose some profit they expected to make out of you if you do not buy from them. They will be people who want to sell you something, who will want to get your money. They will never be people who have built Aladdin homes.

**ALADDIN Homes Not Sectional**

And please remember, always remember, that there is nothing "portable," nothing "sectional," nothing "fabricated" about an

Aladdin home. You can't take an Aladdin house down after it is built. It is designed, constructed and built just like the best architect-designed, contractor-built homes in your neighborhood. Aladdin homes are sturdy, warm and strong—real year-around homes. They have been built and lived in for years in Maine, North Dakota, Michigan, Canada—and in Alaska. The President, the General Manager and most of the executives of The Aladdin Company have lived in Aladdin homes for years.

Aladdin homes are designed to use standard lengths of logs as they come out of the forest. This saves waste of lumber; saves the \$18.00 out of every \$100.00 on waste of labor.

**How Lumber Is Cut to Fit**

The illustration shows the great saving and the simple work of erecting an Aladdin home. The material is cut to fit in our mills and numbered

according to the blueprints which explain every step of the erection. The pieces fit together perfectly. And you save at least 18 percent waste lumber besides 30 percent to 40 percent of the labor of erection. Aladdin is the originator of the Ready-Cut System of construction and has saved thousands of



builders from \$300 to \$800 on their homes.

**Build It Yourself**

We usually advise our customers to have a carpenter, if possible, but we do say that any sensible man can build an Aladdin home if he follows our simple, plain instructions and detailed blueprints of erection.

Every piece of material is cut to fit, with a few exceptions. And these pieces are marked and numbered so that you know just where every piece goes when you look at the illustrations and instructions we supply.

Of course if you build your own house, like so many other Aladdin customers have, you, too, will save money you would have to pay a carpenter.

"It's just common horse sense," wrote a customer, after he had moved into his new Aladdin. This man was so proud because he built his Aladdin himself—and he was not a carpenter either.

**ALADDIN Customers**

If you want to ask advice, it is only fair to yourself, and fair to us, to ask people who know about Aladdin homes. Can a man who hasn't built an Aladdin house know as much about it, or about us, as a man who has dealt with us? We will give you the names and addresses of many customers to write to, or call on. We wouldn't do that if we didn't know they saved money, would we? All right then, if a dealer or a contractor tells you not to build an Aladdin house, ask him for his reasons and investigate these reasons by talking with a man who has built an Aladdin home. Don't take anybody's advice, who has not actually built an Aladdin house. Get your facts from people who know.

**From the  
Pyramids to the  
Woolworth  
Building**

To him who says the Ready-Cut System is not possible or practicable, point to the Pyramids of Egypt, refer to Solomon's Temple as described in the Bible, or inspect Washington Monument, or the 57-story Woolworth Building in New York City. You will find that each was prepared, erected and completed by the Ready-Cut system. But it remained for The Aladdin Company to first apply the system to your benefit in the building of a home. And thousands of American families scattered over this broad land will testify to its economy and practical success.



The pyramids aren't portable, the Woolworth Building is not portable, nor are Aladdin houses portable.

If you attempt to tear apart, or dismantle an Aladdin house, the most expert contractor could not tell it from any first-class frame dwelling because there is no difference except possibly in the higher quality of Aladdin certified lumber.

**Avoid Profits of  
The Middleman**

absolutely the lowest prices. You, therefore, buy direct, without any middlemen to add their profit to the price of your lumber, millwork and hardware.

Is it any wonder our customers write us and tell us they saved \$300, \$500, \$800 and more, when we are able to avoid all these wastes—wastes that exist for the person who builds the old way?

For years many great corporations have been buying and building Aladdin houses for their employees. The United States Government and many states and cities have been our customers. These facts all prove that there is economy and satisfaction for our customers.

**This Catalog Our  
Only Salesman**

With this catalog, you are able to keep the profits in your own pocket that you ordinarily pay to your local dealers. Because we do not sell through dealers, they can't add their several hundred dollar profits to the goods you buy from us. You keep this money yourself.

When your dealer says, "Don't buy your lumber out of town," ask him where he buys the lumber he wants to sell you.

You see, he buys his lumber up here and the only money that stays in your town is the dealer's profit. Wouldn't you rather have it in your pocket than in his?

This catalog makes possible this saving—and many others.

**SEND FOR COMPLETE MERCHANDISE CATALOG**

Write today for new free copy of ALADDIN BOOK of MERCHANDISE. Our WHOLESALE PRICES save you from inflated costs. Be fair to yourself and investigate the amazing values we offer the home-builder; we aim to supply you at lowest possible cost consistent with real quality merchandise.

On this page we show a few selected items but limited space prevents full descriptions. The catalog gives complete details and our prices will prove a revelation.

**INSTALL YOUR OWN HEATING  
AND PLUMBING SYSTEMS**

Be sure to consult our engineering department concerning all heating, plumbing, and lighting systems. We can furnish all materials for complete installation; save you nothing to get our estimates. Simply see for yourself how much we can save you!

Complete plans and instructions furnished for each job which you or which your own men can do the work yourself and realize a double saving.

**SATISFACTION GUARANTEED**

The name "Aladdin" has come to mean a recognized "Standard of Quality" in every household. It carries confidence to the buyer.

Our responsibility is your protection and we sincerely aim to do (once to serve our customer's in an impartial basis of "Satisfaction or Money Back." Could anything be more fair?



You cannot duplicate our price on this cabinet. Furnished in several finishes. Other cabinets also listed.



Aladdin Plumber's Fixtures meet the same high standard of quality. See our Merchandise CATALOG also shows high grade stoves, broilers, ranges, and low price heating appliances.



Plumber design light fixtures of unusual cost. Show many other designs in catalog.



**GRADE A QUALITY  
PLUMBING FIXTURES**

This is only one of our modern plumbing fixture combinations. Every fixture guaranteed high quality. We have everything necessary for the bath, kitchen or laundry.

Send  
for  
Catalog  
Today



Aladdin Indoor Closet at extremely low price. Complete and easy to install. MERCHANDISE CATALOG also shows more elaborate outfits.

**Single and Double Construction** For years we quoted our houses in Double Construction only. An increasing demand from all parts of the country for Aladdin Houses in Single Construction has now led us to quote them both ways. Regardless of what construction you decide upon the same high quality of Aladdin Certified Lumber and Materials will be furnished.

**Porch Interchangeable** As you will notice many porches are quoted separately. This is done so that if desired, the porch can be omitted or you may order some other porch shown in the catalog. This is possible providing the width of the porch is not too great for the width of the house ordered.

**Blueprints** Complete blueprints showing every step of erection are furnished with every order so that even though you may not be a carpenter, you will know just how to erect your home. A foundation plan is included showing you how to proceed in building the kind of foundation you want.

**Chimneys Fireplaces and Masonry** Chimneys or fireplaces can be located anywhere in the house you like, for we do not cut out the materials for these openings. If you do not want the fireplace which may be shown in the photograph, you need not build it. Brick, stone, cement, tile, plaster, etc., can be had in your locality as cheaply as we could furnish it. These materials are therefore not included in the prices quoted.

**Curved Arches** A curved arch can be furnished in place of any cased opening in any Aladdin home if desired, without extra cost. A curved arch is shown in interior view of Jersey home on page 22 and in interior view of Virginia home on page 7.

**Painting** You receive paint for painting the outside, two coats and stain and varnish for interior trim. You may choose natural oil and varnish, light or dark oak stain and varnish or mahogany stain and varnish. These materials are standard high quality and make a beautifully finished job.

**Shingled Walls** Shingled walls cannot be furnished for single construction. At the double construction price, we will furnish cedar shingles for the side walls instead of siding, without additional charge, which includes all other features called for in double construction.

**Stucco Walls** Sheathing and lath for stucco side walls will be furnished instead of siding for the side walls without additional charge.

**Reversing Plans** *Reversing Plans* means changing the rooms to the opposite sides of the house. That is, all rooms now on the right hand side would be on the left hand side and all rooms now on the left would be on the right hand side. This is sometimes desirable, depending on location of your lot and direction the house will face. We will furnish all materials, so house can be erected reversed, without charge. Kindly mention when ordering if this change is desired.

**Freight Exception** We pay the railroad freight on all our houses to all states, except the following: Texas, Louisiana, Florida, Oklahoma, New Mexico, Arkansas, Arizona, Nebraska, North and South Dakota, Kansas, Colorado and Wyoming. Write us for freight quotations on shipments to above states.

#### TERMS AND REFERENCES

Aladdin houses are sold for cash only. We require the full price of the house to be sent with the order to obtain the prices quoted. However, you can send only twenty-five percent or one-quarter of the price with the order and pay the balance upon the arrival of the shipment. If your order is placed on this basis you must add \$10.00 to the price to pay for the extra expense of shipping in this way. On agreement with your bank or building and loan association to pay for materials, we can ship without cash in advance.

**NOTE**—This catalog supersedes all previous catalogs, and all prices herein quoted are subject to revision May 1st, 1928, July 5th, 1928 and September 5th, 1928.

#### REFERENCES

Any bank in the United States, Broadway's or Dun's commercial agencies, National City Bank of New York, First National Bank, Bay City; The Merchants National Bank, Wilmington, N. C.; First National Bank, Portland, Ore.; First National Bank, Hattiesburg, Miss.; or any city official or citizen of Bay City and our customers.



**Bay County Savings Bank**  
INCORPORATED IN MICHIGAN  
Bay City, Michigan

January 1, 1928.

To: ALADDIN COMPANY,  
We are pleased to certify to the satisfaction of the Aladdin Company, and to advise you that any deficiencies you should have will be corrected without charge.

The Bay County Bank Incorporated was not properly incorporated financially and otherwise, and its incorporators were, in so far as their liability and rights were concerned.

This company organized, organized and withdrew the financial services of incorporation and in the absence of all the required items. Evidence of incorporation was not received.

The Bay County Bank Incorporated had the incorporation of their company will be fully paid up to.

Very truly yours,  
*R. S. Gault*  
Treasurer.

REC'D

## THE ALADDIN COMPANY

Offices and Mills, Bay City, Michigan  
Wilmington, N. Car., Portland, Ore., Toronto, Ont.

Cable Address  
"ALADDIN"  
W. U. Code

Write nearest office

Copyright 1928  
THE ALADDIN CO.  
BAY CITY, MICH.



it were only as easy to impress upon you the fact that only the **very best materials** are used in Aladdin Homes as it is to convince you of the fact that our delivered prices are exceedingly low, there would be no question about your buying an Aladdin house.

When you talk to other people, the argument is often used that at the price we quote it is impossible to deliver high grade materials. This statement is **not true**. We do deliver the high grades of materials described in our catalogs, and have written as strong a guarantee as we know how to write, in order to convince you that when we say **knotless we mean knotless**.

When anyone tries to tell you that the materials we will deliver for your house are not of a high quality, they are not stating the truth. **THEY** might not be able to deliver quality materials at the prices we quote, but **WE** do.

Quantity production and cash selling makes it possible for us to do what the other fellow can't do. We carry only one quality, and that is the **BEST**, and whether you buy the largest or the smallest house, you will receive the same guaranteed quality.



## INDEX

House	Page	House	Page	House	Page	House	Page
Adams	24	Garages	42-43	Maidstone	6	Potomac	17
Bluebird	14	Holland	31	Marigold	27	Roseland	11
Capitol	28	Inverness	25	Maryland	21	Sherbrooke	29
Carlton	37	Jersey	72	Mayflower	33	Sunbeam	33
Cadars	5	Kenmore	38	Nantucket	34	Trenton	30
Columbia	8-9	Larchmont	12	Newport	36	Vermont	32
Coral Gables	20	Lindbergh	15	Norwood	29	Victory	18-19
Elmhurst	19	Linden	16	Pilgrim	23	Virginia	7
Fairfield	35					Welland	26

**LABOR ESTIMATES** on the various houses shown in this catalog based on averages compiled from reports we have received from different parts of the country as to the time of construction:

Name of House	Carpenter Work Single Construction	Carpenter Work Double Construction	Painting Exterior and Interior	Surface to Lath
Adams	3 men 20 days	2 men 22 1/2 days	1 man 10 days	478 yds.
Bluebird	2 men 12 days	2 men 14 days	1 man 6 1/2 days	305 yds.
Capitol	3 men 20 days	3 men 23 1/2 days	2 men 8 days	710 yds.
Carlton	3 men 19 days	3 men 21 days	2 men 7 days	482 yds.
Cadars	2 men 10 1/2 days	2 men 12 days	1 man 6 days	211 yds.
Columbia	2 men 8 days	2 men 9 1/2 days	1 man 5 days	169 yds.
Coral Gables No. 1	2 men 12 days	2 men 14 days	1 man 6 1/2 days	310 yds.
Coral Gables No. 2	2 men 13 days	2 men 15 days	1 man 7 days	340 yds.
Coral Gables No. 3	2 men 14 days	2 men 16 days	1 man 7 days	378 yds.
Elmhurst	2 men 11 1/2 days	2 men 13 days	1 man 6 1/2 days	286 yds.
Fairfield No. 1	3 men 18 days	3 men 20 days	2 men 8 1/2 days	604 yds.
Fairfield No. 2	3 men 20 days	3 men 22 days	2 men 9 days	444 yds.
Holland	3 men 20 days	3 men 22 days	2 men 9 1/2 days	619 yds.
Inverness	2 men 19 days	2 men 21 days	1 man 12 days	450 yds.
Jersey	2 men 15 days	2 men 17 days	1 man 8 days	269 yds.
Kenmore	3 men 24 1/2 days	3 men 27 days	2 men 9 days	547 yds.
Larchmont	2 men 11 days	2 men 12 1/2 days	1 man 7 days	219 yds.
Lindbergh No. 1	2 men 14 days	2 men 16 1/2 days	1 man 8 1/2 days	363 yds.
Lindbergh No. 2	2 men 16 days	2 men 17 1/2 days	1 man 9 days	403 yds.
Linden No. 1	2 men 17 days	2 men 18 days	1 man 6 1/2 days	301 yds.
Linden No. 2	2 men 17 1/2 days	2 men 19 1/2 days	1 man 7 days	328 yds.
Linden No. 3	2 men 18 days	2 men 20 days	1 man 7 days	348 yds.
Maidstone	2 men 13 days	2 men 14 days	1 man 7 days	229 yds.
Marigold	2 men 14 days	2 men 15 days	1 man 7 days	238 yds.
Maryland	2 men 14 1/2 days	2 men 16 days	1 man 8 1/2 days	195 yds.
Mayflower 18x18	2 men 6 days	2 men 7 days	1 man 4 days	138 yds.
Mayflower 22x22	2 men 8 days	2 men 9 1/2 days	1 man 5 days	200 yds.
Mayflower 26x26	2 men 11 days	2 men 12 1/2 days	1 man 6 days	256 yds.
Nantucket No. 1	2 men 13 1/2 days	2 men 15 days	1 man 9 days	408 yds.
Nantucket No. 2	3 men 24 days	3 men 27 days	2 men 10 days	649 yds.
Newport No. 1	3 men 15 days	3 men 17 days	2 men 5 days	414 yds.
Newport No. 2	3 men 22 days	3 men 24 days	2 men 7 days	378 yds.
Norwood	1 man 23 days	1 man 27 days	2 men 10 days	380 yds.
Pilgrim	2 men 14 days	2 men 15 1/2 days	1 man 10 days	466 yds.
Potomac	2 men 21 days	2 men 23 1/2 days	1 man 7 days	359 yds.
Roseland	2 men 17 days	2 men 18 days	1 man 7 days	267 yds.
Sherbrooke No. 1	3 men 22 days	3 men 25 days	2 men 10 days	468 yds.
Sherbrooke No. 2	4 men 25 days	3 men 28 days	2 men 10 days	556 yds.
Sunbeam	2 men 7 1/2 days	2 men 9 days	1 man 5 days	202 yds.
Trenton	2 men 25 days	2 men 28 days	1 man 13 days	300 yds.
Vermont	2 men 21 days	2 men 23 1/2 days	1 man 11 days	378 yds.
Victory	2 men 14 days	2 men 16 days	1 man 7 days	357 yds.
Virginia	2 men 13 days	2 men 15 days	1 man 7 1/2 days	444 yds.
Welland	2 men 19 days	2 men 21 1/2 days	1 man 10 days	491 yds.

**THE ALADDIN COMPANY**

Offices and Mills, Bay City, Michigan  
Wilmington, N. Car., Portland, Ore., Toronto, Ont.