

ALADDIN

READI-CUT HOMES

30th ANNIVERSARY CATALOG

Dollar-A-Knot Guaranty

WORLD'S OLDEST AND
LARGEST
MANUFACTURERS
OF READI-CUT HOMES
SUMMER COTTAGES / GARAGES

Presented to

THE ALADDIN COMPANY

Founded by W. J. and O. E. SOVEREIGN

HOME OFFICES AND MILLS

BAY CITY, MICHIGAN

BRANCH OFFICES AND MANUFACTURING PLANTS

PORTLAND, OREGON AND TORONTO, ONTARIO, CANADA

Modern American Homes for Modern American Families

Announcing ALADDIN'S Newest Achievement!

ALUMINUM PROTECTED LUMBER

Greatest Single Advancement in Home Building Since Our Creation of the Readi-Cut System

Aladdin announces an amazing advance in house construction methods. It is surpassed in importance only by the great cost lowering achievements of the Readi-cut System itself. Your Aladdin will be sheathed with a coat of Aluminum. All siding and outside finish exposed to the weather will have a metal coat of protection. This forms the strongest known protection against the ravages of weather, dampness, age or other damage. It also forms a perfect undercoat for our high quality paint. It gives the most perfect protection to our Certified and Guaranteed Knotless Siding and Knotless Outside Finish.

To own a home, having the protection, value and benefits of the latest scientific accomplishments, is a matter of pride and satisfaction.

To be one of the first in your community to own such a home is a distinction and is evidence of leadership.

The silvery flash of the Aluminum metal coat, as your home is under construction, gives notice to the world that here is a home different, sounder and more distinctive than any home around you, regardless of size. It gives notice that here is a home whose every board, which is exposed to the weather, is covered with a coat of metal protection.

The millions of tiny Aluminum flakes, by leaping together, form a continuous coat of metal protection. They keep out moisture and add years of life to the surface to which they are applied.

The ALADDIN Company
Bay City, Mich.—Portland, Ore.
Catalog No. 48 Copyright 1936

**All Lumber Exposed
to the Weather Protected
with a Coat of ALUMINUM.**



What Our 30 Years Experience In Homebuilding Means to You When Building a New Home



O. E. Sovereign, Gen. Mgr.

THE ALADDIN COMPANY was started thirty years ago by W. J. Sovereign and O. E. Sovereign who perfected and established the First Ready-cut System of Home Building in the United States.

Today, as in the past, the company is still managed and owned by these two brothers. Customers of thirty years ago may write to The Aladdin Company today and know that the management is unchanged, and that they are writing to and dealing with old friends.

This company manufactured and shipped the first complete Ready-cut Home built in the United States. The Ready-cut System, as originated by The Aladdin Company, has been approved by large purchases by the United States Government, the Michigan State Government and hundreds of big corporations.

The Aladdin Company owns and operates mills in Michigan and Oregon, which are the largest lumber markets in the country.



W. J. Sovereign, President

NO EXTRAS TO BUY

When you purchase an Aladdin home you know exactly the cost of all lumber, hardware, doors, windows, paints, stains, varnishes and other materials as included in our specifications. You can more closely determine the completed cost of an Aladdin home, in advance, than of any other type of home.

We guarantee enough materials to complete the home according to our drawings and specifications and we further guarantee the safe arrival of all materials to your nearest railroad station. When you build an Aladdin home you do not have costly extras to pay for, after your home has been started.

BUILD THE HOME YOURSELF

Thousands of our customers, without previous building experience, have built their own Aladdin home. All you have to do is follow the complete drawings and instructions we furnish. Our drawings show every step of the erection and the position of each piece of material, in the home. These pieces are marked and numbered so that you know just where they go. You save from 30 to 40 percent in the time and labor of erecting an Aladdin home.



HOME OFFICES THE ALADDIN CO.

OUR SIX PLANS OF PAYMENT FOR YOUR HOME

1—CASH WITH ORDER

A two percent discount will be allowed for full cash with order. Just send your check, bank draft, postal or express money order with your order.

2—PART CASH—BALANCE C. O. D.

If you cannot send us the full cash with order, but will have the money ready when your materials arrive, send us a deposit of one-quarter or twenty-five percent and you can pay the balance thru your bank when the materials arrive. No discount is allowed under this plan.

3—DEPOSIT MONEY IN YOUR LOCAL BANK.

When you have your order made out and know what the total is, deposit this amount in your local bank. Have your banker write us stating that amount will be sent us when your materials arrive, or if you wish to inspect the materials, his letter should state that the payment will be made five days after the materials arrive. We guarantee the quality, quantity and the safe arrival of all materials to your railroad station.

4—BANK OR BUILDING AND LOAN.

If you are borrowing money, to build, from your local bank or building and loan association and their rules do not permit them to advance the cash so you can send it with your order, have them write us stating that the money will be paid us ninety days after your materials arrive and we will ship your home without an actual cash deposit of any kind.

5—AS CONSTRUCTION PROGRESSES.

If you are borrowing money, to build, from your local bank or building and loan association and they wish to pay us for your materials as the construction progresses just have them write us stating how and when the money will be paid.

6—FIRE INSURANCE LOSSES.

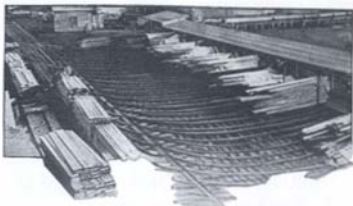
If your home has burned, and you do not wish to wait for your money from the insurance company, we will ship your home immediately if you will get a letter from your insurance company to The Aladdin Company agreeing to pay us for your materials when your insurance money is available.

BUYING AND SELLING FOR CASH IS ONE BIG REASON FOR OUR LOW PRICES

ALADDIN'S SERVICE TO THE HOMEBUILDER

ARCHITECTURAL PLAN SERVICE

This catalog contains plans and designs that are the best that home planning experts and building engineers know how to design. In our plans every inch of available floor space is used to advantage. Because we standardize on the homes shown in our catalog, we can make hundreds of blueprints from one set of drawings, thus making it possible for us to give you this plan service absolutely free with your home. Should the design you select require slight changes, we will, if practical to do so, make them for you at actual cost.



Loading Yard of the ALADDIN Mill Railroad that Transports Lumber from the Yards to the Mill

QUICK SHIPMENT

We can ship any regular home in this catalog within five days after we receive your order. The average time required for delivery after leaving the factory is from three to five days. We prefer to be given a little more time if convenient to you.

COMPLETE IN ONE CAR

All homes and summer cottages are shipped complete at one time in a sealed box car from our mill at Bay City, Michigan or Portland, Oregon, whichever is nearest to you. We send complete instructions for unloading the car so everything can be placed in convenient piles on your lot.

WHY AN ALADDIN HOME SAVES YOU MONEY

QUANTITY BUYING

Because of the tremendous amount of building materials we purchase each year, we are in a position to buy at the lowest possible prices. The large quantity purchased makes it possible for us to obtain prices far lower than any company or individual who has a demand for only a few homes each year.

When the finest grades of materials are used, you are assured of the highest kind of an investment in your home. We never, in any case, sacrifice quality for price or profit. Aladdin Certified Lumber is guaranteed to be satisfactory.

STANDARD SIZE MATERIALS SAVE WASTE

We save you eighteen percent in waste because our homes are designed to use standard sizes and lengths. Also all mill work, doors, windows, etc., are manufactured to standard sizes thus making it possible for us to produce them in tremendous quantities. Naturally with the large production and modern factory manufacturing methods, we effect a saving for you on all of the items entering into the construction of your home. All lumber used in Aladdin homes is a standard size as adopted by The National Association of Lumber Manufacturers.

YOU BUY MATERIALS DIRECT

Aladdin homes are sold direct to home builders—to you—no middlemen add their profits to the price you pay. Aladdin does not sell thru agents and, therefore, nothing has been added to Aladdin prices to take care of agents' commissions.

FACTORY CUTTING AND FITTING—SAVES LABOR

An Aladdin Readi-cut Home saves you from thirty to forty percent in your labor bill because the carpenter does not have to spend his time working out the construction details, and cut all the lumber by hand. Our complete drawings give him construction details that have been proven the best over a period of thirty years. When building the Aladdin Way, you save all the time used by a carpenter in measuring, cutting, trying and fitting, because all of this work has been done in our factory by modern machines. A machine cut Aladdin home is better built, stronger and more substantial and it will give you a lifetime of satisfaction.



ONE MAN EQUALS
SIX CARPENTERS



LOOK AT THE CONSTRUCTION

Aladdin fire stop construction is recommended by The Fire Insurance Companies and is used in all Aladdin homes. By referring to the sketch at the right, you will readily understand the advantages in our fire stop construction. The studs do not run from the foundation wall up to the attic. By using 2" x 4" plates, drafts are eliminated and fire cannot run up thru side walls.

WHY SOME DEALERS AND CONTRACTORS TALK AGAINST READI-CUT HOMES

It's the simplest reason in the world. They have no chance to make a profit on the house you buy from The Aladdin Company.



Showing Simple Plan of Laying Out Materials

You keep the profit in your own pocket that you would ordinarily pay to the local dealer. When the local dealer says, "Don't buy your lumber out of town", ask him where he buys the lumber you see here and the only money that stays in your town is his profit. Many contractors don't like readi-cut

houses because they lower labor costs about one-third. They, therefore, make less money building one.

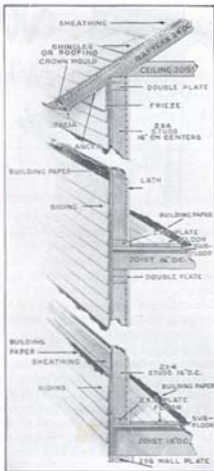
One of the most amusing remarks made is that the builder of an Aladdin home will lose as much time hunting out his material and finding the right pieces as he will save by the Read-i-cut System. Any thought about time lost in hunting for pieces will be found untrue when you see the simple system of laying out materials given in our Instruction Book with every home.

MASONRY, CHIMNEY and FIREPLACES

Chimneys can be located anywhere in the house you like for we do not cut our materials for these openings. If you do not want the fireplace which may be shown in the photograph and floor plan arrangement, you need not build it. Brick, stone, cement and plaster can be had in your locality as cheaply as we could furnish it. We furnish you a foundation plan which shows you exactly how to proceed to build your foundation. Any of our homes can be built on a pier or post foundation if desired.

PLANS CAN BE REVERSED

Any Aladdin Plan can be furnished reversed. A reversed plan would place all of the rooms on the opposite side of the home from that shown in the catalog plan. In a reversed plan the rooms now on the right hand side would be on the left hand side and those on the left hand side would be on the right hand side.



Aladdin Fire Stop Construction As in Double Construction

VISIT OUR MILLS

If you live near one of our mills, we would welcome a visit. We can show you the actual materials used in Aladdin homes and also give you all information you would like to have.

WHY WE SELL FOR CASH ONLY

Because we have found that we can be of greater service to the home builder, to you, by selling high quality materials for a low, cash price than we can by selling on Credit at a much higher price.

It is a fact that most people who buy on a Credit Payment Plan have to pay from one-quarter to one-third more than the Cash Buyer. That means the work and savings of three or four years paid out for nothing. Compare our cash prices with those offered by others who sell on a credit payment plan and you will find they are charging you heavily for the privilege. They have to do it.

The way to avoid these extra charges is to buy and build on a cash basis. If you do not have the cash on hand to pay for your home, borrow it from your bank or building and loan company and pay cash for your materials. The bank will charge you the regular rate of interest only. Your saving will amount to hundreds of dollars, the exact amount depending on the house you purchase.

ALADDIN'S GUARANTY

Satisfaction or your money back is the strongest and soundest guaranty ever written. When this guaranty is backed by a Million Dollar Corporation you are assured of absolute safety in all your dealings. We carry only one quality and that is the best and whether you buy a large or small home you receive the same guaranteed quality.



WHAT YOU GET

When You Buy An ALADDIN House

A careful reading of what follows below will give you a clear idea of the completeness of materials and equipment which are included in the price of Aladdin houses. Included in the purchase price of your house is our thirty years of home building experience—to guard you against mistakes of *any* kind. This thirty years' experience has taught us what are the best construction methods, the best materials to use and further how to help you in innumerable ways during the building of your house. Read the following thoroughly:

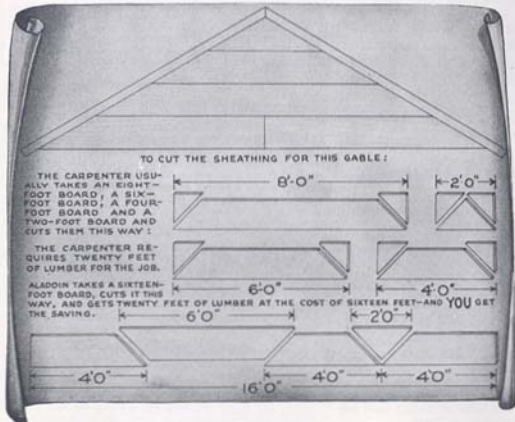
Sills cut to fit, joists, studding, rafters and ceiling joists all accurately cut to fit, sheathing lumber cut to fit, joist bridging cut to fit, building paper for all dwellings for outside walls and floor lining, siding cut to fit for Single Construction and to approximate lengths for Double Construction and to approximate lengths for Double Construction, shingles or siding for the side walls, whichever preferred, will be furnished at no additional cost. Outside finishing lumber cut ready for fitting, roof sheathing and roof ceiling cut to fit. Porch joists, porch flooring, porch columns, porch balusters and porch sheathing or roof cut to fit, porch railing uncut. Roll roofing, wood shingles or strip shingles. Outside steps of all dwellings cut to fit. All doors mortised to receive lock set, frame and trim inside and out. Windows with frame, sash and glass and trim inside and out. Mouldings and baseboard for all rooms not cut to fit. Weather moulding for trimming all

outside doors and windows cut to fit. Crown moulding, cove moulding and quarter round moulding cut to fit.

Flooring tongued and grooved. Stairways, treads, risers, stringers, newel posts, balusters, mouldings, etc., for all two story houses cut to fit. Material for cellar stairs, where shown, cut to fit. All hardware, mortise locks, knobs and hinges, tin flashing, hip shingles, galvanized ridge roll, window hardware, metal door bumpers, etc. Nails of proper sizes for entire house. Paint for three coats, outside body and trim (any color), undercoat aluminum paint. Putty, oils, stains and varnishes.

Foundation plans and foundation instructions. Complete detailed blueprint instructions cover complete house together with copy-righted book of written instructions and illustrations showing every step in erecting and completing the house.

Twenty Feet of Lumber from a Sixteen Foot Board



▲ ▲ ▲

The drawing at the left shows plainly how the Readi-cut system saves waste which saves your money. The lumber that is wasted costs just as much as the lumber that is used. This waste saving system reduces your costs about \$18.00 on every \$100.00. That is worth saving isn't it?

▼ ▼ ▼

ALADDIN'S FAMOUS DOLLAR-A-KNOT GUARANTY

A new standard of lumber quality has been given to the world by Aladdin's famous "Dollar-A-Knot" guaranty.

The "good enough" lumber grades, the "anything will do" grades and the multitude of substitutions for clear, knotless lumber have been shown up.

You cannot be expected to understand the complications of lumber associations' grading rules; how many circles, hearts, rings and barks make a good log nor how many knots, spots, pitch pockets or worm holes there will be to a board.

There are none of these defects in your dollar, and there should be none in what you trade your dollar for.

I'll Pay \$1.00 for Every Knot

I'll pay \$1.00 for every knot any customer can find in our Red Cedar or Redwood Siding. I stand ready to prove to you in this way that the lumber in Aladdin Ready-Cut Houses is higher in grade throughout than is regularly carried by any seller of lumber in America. Further, we guarantee that you will receive clear and knotless siding, clear and knotless flooring and clear and knotless interior finish for every Aladdin Dwelling House.

O. E. Sovereign, Gen. Mgr.
The Aladdin Company

Knotless Means Just What It Says

"A-Dollar-A-Knot." Could any guarantee be plainer or more forceful or more effective. You know a knot when you see it and you know it makes a board less valuable. And when we guarantee Aladdin lumber to be knotless, or guarantee "A-Dollar-A-Knot" for our red cedar or redwood siding, you know that your lumber is going to be the very highest grade taken from the forest.

Golden Rule Service

Every tree has some clear lumber in it. It's the best part of the tree. It is the purest part of the product. Aladdin houses are built on the highest quality and all exposed lumber is taken from the best part of the tree. Our framing lumber is straight, well seasoned and sound. Aladdin houses are built on highest quality, and Golden Rule service to the customer. Aladdin has commandeered the knotless parts of the finest trees—the unsurpassed quality of defectless lumber.

ALADDIN'S MATCHLESS GUARANTY

What Induces Us to Supply such Matchless Quality.

Aladdin believes the modest home merits the same goodness as the mansion. It should be built of material to last as long as the biggest homes. We intend to nail Aladdin quality on the highest attainable pinnacle and keep it there.

While these are excellent reasons for the careful, thinking home buyer, the real undebatable reason is summed up in the goodness, soundness and the thoroughness of the quality of Aladdin Houses.

The Service Aladdin Offers

You receive a scientifically designed home; a scientifically manufactured home; the benefit of buying power, thousands of times greater than your own. You receive the safeguards of our experience. You are guarded against costly extras. You have our help in keeping costs down. You save many days time. You save costly waste. You receive everything complete for your home in one shipment. You know exactly what your house will look like when completed. You save all architectural fees. You are assured prompt shipment and quick erection. You receive a bona-fide guarantee of complete satisfaction.



THE NEW ERA IN HOME BUILDING

Alert Home Builders
Profit by Newest Methods,
and Up-to-the-Minute Construction Efficiency

Gone Are the Ancient Hand Saw
Methods of Home Building



INTERIOR VIEW—THE MADISON

Read Here How to CONTROL Your Building Costs

WASTE can and does influence the cost of everything you buy. This is especially true of home building.

Waste consumes your dollars and gives nothing in return. Aladdin proves to you that the Read-cut System will save about \$18 out of each \$100 on your lumber costs.

Aladdin proves to you that the Read-cut System will save you about \$30 out of each \$100 labor cost.

When the customer buys direct from the manufacturer there are no middlemen's cost and profits in the price he pays.

You can buy your house direct from the manufacturer. You can save the costs and profits of middlemen. You can save from \$200 to \$1,000 on the materials. This is your good money that would otherwise go into the pockets of middlemen.

Why shouldn't you save these profits, like thousands of other homebuilders have been doing through The Aladdin Company for the past thirty years?

Aladdin houses are sold direct. No dealers' or jobbers' profits in the price you pay. No financing charges. We sell for cash only.

You KNOW in advance what the materials for your house will cost you. You KNOW there will be no shortage of materials—nothing forgotten. You KNOW you will not be paying for more materials than will be used and that you will save the price of all "short ends" that are wasted by the old system.

You KNOW you will receive high grade lumber, millwork, hardware—Aladdin CERTIFIED materials. You KNOW everything will be on hand when you want it—all in one shipment and all guaranteed by Aladdin. And you KNOW in advance what your house will look like and what it will be in every way.

KNOWING gives you control—mastery of your money, of materials, of labor and of RESULTS.

Buying an Aladdin Home is the safest, easiest and wisest way to build.

Aladdin houses are sold from this catalog and built in every State in the Union. Varying weather conditions and the personal needs of the builder can easily be met by us with such changes in our specifications as you may wish.

To make it easy for you to order just what you want to buy we give you separate prices in this catalog on single and double construction, porches, lath, wall board, asphalt shingles, closet doors, cellar windows, kitchen cabinets, etc. If other changes in our specifications are desired, we will be glad to have you write us about them.

More than half of our houses are sold in single construction, without any additional materials or equipment being included. If you purchase your home in accordance with these specifications, you will receive a good, strong, satisfactory home.

LUSTRAGLASS

The Ultra-Violet Ray Window Glass
THE NEW HEALTH WINDOW GLASS

The world's greatest doctors agree that ordinary window glass blocks out the Sun's health-giving, body-building Ultra Violet Rays. The Sun's pure unobstructed rays renew health, build health, aid children's growth—kill germs. Ultra Violet Ray Health Glass in windows, open the home to these healthful benefits. All Aladdin homes are now furnished with Ultra Violet Ray Health Glass for all windows.

Lustraglass is a new glass. It has no equal. It is not "ordinary window glass." Lustraglass is a perfectly flat glass of brilliant lustre, the "whitest" of all glass made for windows and transmits more daylight as well as more **ultra-violet** rays than ordinary window glass. Lustraglass has no "equal" because no other glass is just like it.

To see the different results between ordinary window glass and the new **ultra-violet** ray window glass that will be furnished with your new Aladdin Home, look at the illustration on this page.

Aladdin engineers are always looking for the best and newest ideas in home construction, therefore, Lustraglass, the new **ultra-violet** ray window glass will be supplied in your new Aladdin Home.

Spinach plant. Number 1, grown under Lustraglass, the ultra-violet ray window glass. Plant number 2, grown under ordinary window glass. Both plants exactly the same age.

This is evidence from laboratory experiments that ordinary window glass blinds the interior of your home to the valuable health giving, body building **ultra-violet** rays of sunlight.



INTERIOR VIEW—THE VIRGINIA





THE HAWTHORNE—Astonishingly Priced—

Price Given
On Enclosed
Price List

And We Pay
The Freight

The Hawthorne is a fine example of the average American home. It is ideal in size, perfect in proportion—and the price is astonishingly low. All materials are of our Certified high qualities. Always remember that Aladdin guarantees that you will have sufficient material to complete your house as stated in our specifications. And this guarantee also covers safe arrival of all material in perfect condition. A noteworthy feature of the Hawthorne home is that every bedroom in all five plans is provided with a closet. A door frame is provided for each closet opening but the door itself is not included. The numerous requests we have received for the omission of closet doors have induced us not to include them in our specifications. The openings can be artistically draped, adding color and attractiveness to the interior of the home and at the same time an economy is effected. However, if you wish doors on the closets of your home, you can

purchase them separately at \$4.80 each, including hardware, as described on Page 48. The 22' x 8' porch shown in the illustration is priced separately to permit you omitting it or selecting some one of our other porches, if you prefer. If desired, the porch columns can be furnished to extend down to the porch floor, making the cement block piers unnecessary. With the Hawthorne home you receive 6" x 8" built-up girders, 2" x 8" floor joists on 16-inch centers and 2" x 6" rafters on 24-inch centers. Ceiling height 8 feet. The roof has a one-quarter pitch. Complete detail specifications mailed on request.

Save Waste—Save Time—Save Money

When your local dealer says:
"Don't buy your lumber out of town," ask him where he buys the lumber he wants to sell you. You see he buys his lumber up here and the only money that stays in your town is HIS PROFIT.





THE NANTUCKET — A Master Design —

Price Given
On Enclosed
Price List

And We Pay
The Freight

Dignity, Strength and Beauty—all are evident from the most casual glance of the exterior of the Nantucket. Refinement in every detail is manifest. A more careful study of the outward appearance and the interior arrangement, bears out your first impression. Truly, in appearance and plan arrangement, the Nantucket is a master design. Also, it is a great satisfaction to know that the construction used in your home is not a bit and miss construction. Ample strength in all beams, girders, joists, rafters and all framing is assured. Aladdin's engineers have accurately figured the necessary requirements, and then, for good measure, have given you an even heavier construction. And you will be surprised and pleased at the high quality of all materials you receive. It is an actual fact that hundreds of our customers write us each year saying that the materials they received with their Aladdin home were of a higher quality than they could have purchased locally AT ANY PRICE. Surely such reports permit us to say that Aladdin materials are far above the average in quality. Two plans of the Nantucket are presented—one of two bedrooms—the other of three. Both are complete, compact and provide more than the usual number of good features desired in a modern home. Both plans give an exceptionally large living room and a well proportioned dining room. In both plans the kitchen is large enough to accommodate all necessary fixtures and furniture and small enough to reduce the work of meal preparing and serving to the minimum. Both plans isolate the bedrooms and bath room from the living quarters of the house. Each bedroom has its closet. In the Number Two plan an exceptional feature, rarely obtained in a one-story home, makes it possible to go from the kitchen to the bedrooms or bath, without passing thru the living room or dining room. The illustration at the top of the page shows the Number Two plan. The rear addition shown in the illustration, is of course, not included with the Number One plan. The porch is quoted separately and can be purchased with the home, or not, as you prefer. Sufficient space for second floor rooms is not available in either plan. With the Nantucket you receive 6" x 8" built-up girders, 2" x 10" floor joists on 16-inch centers and 2" x 6" rafters on 24-inch centers. Ceiling height 9 feet. Shutters for front windows included as shown in illustration. The roof has a one-quarter pitch. Asphalt strip shingles included in price. Complete detail specifications furnished on request.

Mt. Gretna, Pa.

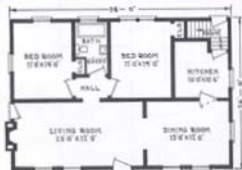
Dear Sirs:

Yesterday marked the 20th anniversary of our moving into the Aladdin house you sold us. Having been kept in point, it is today to all intents and purposes as good as the week it was built in 1913. I have lived 20 years and this Aladdin house is among the outstanding best buys of a life time.

I am sending you a photo taken only last week. At this season this mountain is a mass of blooms—dogwood, laurel, azalea, etc. At left you can make out a 20-ft. Tenon pole.

Mrs. Wittman joins me in thanking you for the favor of selling us this home in our old age—for favor we indeed consider it.

With many best wishes for your continued success, as always very truly,
W. T. W. Wittman.



PLAN No. 1

You Will Start
Saving Money
The Day You
Buy An
Aladdin Home



PLAN No. 2

Safe
Arrival of
All Materials
Guaranteed



THE PERSHING—Four Exceptional Plans—

Price Given
On Enclosed
Price List

And We Pay
The Freight

Here is one of the choicest of our new designs. It is as modern as the latest fashion magazine. New trends in home design seek the utmost in simplicity, a very suitable trend, for economy of cost accompanies it. In two of the plans below, the car room is an integral part of the structure—the last word in architectural home design. In the other two plans the car room wing becomes a part of the home room arrangements. Both two and three bedroom plans are shown for the Pershing while bath room and closets are in all plans. All four plans have generous sized living rooms. Be sure to read "What you get when you buy an Aladdin house" on page 6 so you will have a full understanding of the completeness of the materials we furnish and also the service that goes with every sale.

Write us if you have any questions about Aladdin houses. We are glad to give the fullest information. The Pershing will delight you in every way.

You will receive 6" x 8" built-up sills, 2" x 8" joists on 16-inch centers and 2" x 4" rafters. Ceiling height is 8 ft. Complete detail specifications mailed on request to you.

Using Aladdin Read-Cut Materials You Save About Thirty Percent on Labor. In Other Words, Using Aladdin Read-Cut Materials, Your Home Is Almost One-Third Constructed When the Materials Reach You.



Deerfield, N.Y.

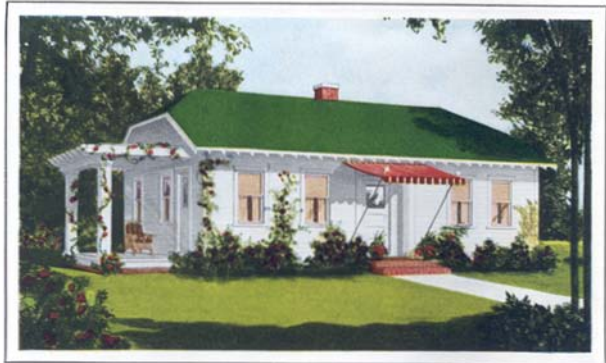
Gentlemen:

You have my permission to refer prospects to me in regard to Aladdin homes. I will be glad to show them through our home should they call.

We are very well satisfied with our home, particularly because we now own our own home and this would have been impossible without Aladdin, considering the cost of a contractor-built house of the same quality.

Wm. A. Keene





THE POPLAR—A Quaint Colonial Bungalow— Price Given On Enclosed Price List And We Pay The Freight

A true Colonial atmosphere is present in the design of this delightful bungalow. You will be proud of the genuinely honest construction, sturdy timbers and beautiful interior woodwork. Originality is expressed in the roof lines with hooded gables. Exposed rafter ends lend a touch of individuality while the general proportions of the structure are most harmonious. Four plans of the Poplar are shown below. In some of the plans a door is shown in the side of the living room in order to give access to the pergola porch. In other plans a window is shown. In any of the plans you can have either a door or a window depending upon whether or not you wish to order the pergola porch. There is no charge for this change from door to window or window to door. The 14' x 8' pergola porch has weather tight roof. It is priced separately below so it can be purchased with your home or not, as you prefer. When the width of the building lot prevents using the porch at the side of the house as pictured, it is often built on to the front of the house. This arrangement also provides a very attractive appearance. With the Poplar home you receive 6" x 8" built-up girders, 2" x 8" floor joists on 16" centers and 2" x 6" rafters on 24" centers. Ceiling height 8 feet. The roof has a one-quarter pitch.

Complete detail specifications mailed on request.

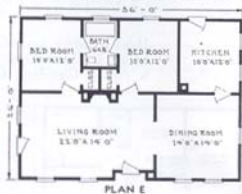


Westhampton
Beach, N. Y.
Gentlemen:

My new Aladdin Popular house is finished and I had enough of everything needed to finish it. I am satisfied in every way you treated me. I intend to build more in the near future and will sure give you a call.

G. H. Liedtke.

Dollar
A Knot
Quality





THE MAGNOLIA—A Story and a Half Home—

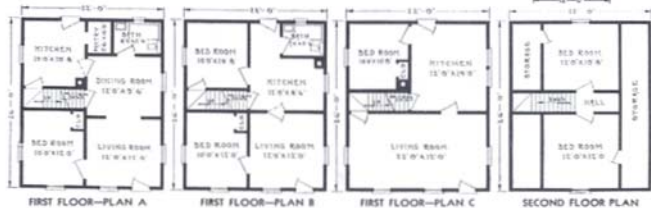
Price Given And We Pay
On Enclosed The Freight
Price List

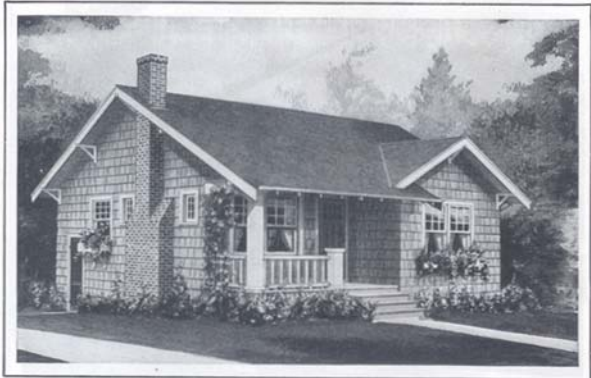
The Magnolia is of the popular story and a half type of home. Three different first floor plan arrangements are obtainable. The second floor plan is the same for all three plans. Some of our customers who select first floor plan B and do not require the bath room, use the bath room for a dining alcove or omit the bath room entirely, adding its space to the kitchen. The Magnolia plan C provides for a living room, kitchen and bedroom on the first floor, no dining room being included. Many of our customers wish to use the kitchen for a dining room and the bedroom for a kitchen. We then place the outside rear door in the rear wall of the bedroom and provide a cased arch in place of the door between the living room and new dining room, including an extra window for the rear wall of the dining room, all at no charge. If you wish us to make this change for you it is only necessary that you mention it when ordering. The 20' x 8' porch is priced separately for your convenience. It can be purchased or not, as you prefer. The wooden columns of the porch can be furnished to extend down to the porch floor if desired, making the brick piers unnecessary. With the Magnolia home you receive 6' x 8' built-up girders, 2' x 8' first and second floor joists on 16-inch centers and 2' x 4' rafters on 24-inch centers. Ceiling height 8 feet first floor. See sketch at right showing second floor ceiling heights. The roof has a one-quarter pitch. Complete detail specifications mailed on request.

Swarthmore, Pa.
Gentlemen:
Will be very glad to recommend Aladdin homes at any time as I am very much pleased with the one I bought from you.
Victor D. Shiver.

Aladdin Houses Are Sold by the Golden Rule

For thirty years The Golden Rule has governed the business policies of the men responsible for The Aladdin Company and its products. During all this time there has never been a Court Action started by any customer against the company. Our broad guaranty of "Satisfaction or Your Money Back" insures a happy relationship between the company and all customers.





THE MARSHFIELD—A Snug, Distinctive Home—

Price Given
On Enclosed
Price List

And We Pay
The Freight

The Marshfield is a snug little home and the careful handling of fine details makes it a home of unusual distinction. It is compact, making it a home easy to heat and take care of. The front porch is included in the price. A fine location for a fireplace is suggested by the plans and illustration. However, we do not cut the openings for fireplaces and therefore they need not be built unless wanted. If you do not intend building the fireplace chimney, the two small windows in the end of the living room can be omitted and one full size window furnished in their place at no difference in price. The Marshfield is priced with siding on the outside walls and built in this manner, it is just as attractive as when shingles are used. If you desire to shingle the outside walls as suggested in the illustration, shingles can be substituted for siding at no additional cost providing wall sheathing is being used. The Marshfield can be purchased in two sizes. Plan A has a conveniently located dinette, or dining alcove, off from the kitchen. A great number of small homes today are being built without a dining room and there are many good reasons for not including them. If no dining room is arranged it means a smaller home to build, to heat, to clean and maintain. It saves the cost of expensive dining room furniture. Still, many people prefer a dining room and therefore Plan B of the Marshfield is also offered. Plan B is practically the same as Plan A with the exception that a dining room is provided in place of the dinette. With the Marshfield you receive 6" x 8" built-up girders, 2" x 8" floor joists on 16-inch centers and 2" x 6" rafters on 24-inch centers. Ceiling height 9 feet. The roof has a one-quarter pitch. Complete detail specifications furnished on request.

The modern trend in home building has definitely turned to
Small, Convenient Houses.

Lower Investment Costs - - - Lower Maintenance Costs
and Easier Housekeeping all favor small homes.



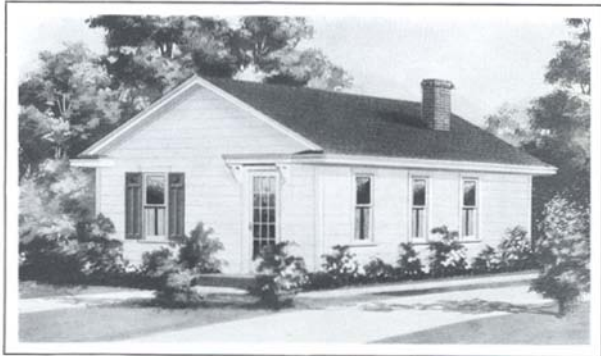
Potomac Mills, Va.
Gentlemen:

In answer to your letter I shall state that we would be delighted to give information to your prospective customers regarding our experience with the Aladdin Rent-cut System.

Many people throughout the Northern Neck of Virginia and the nearby cities have been pleased with the outside appearance of our home and came to inspect same, which has provided a source of pleasure to us to show them. Truly, our Marshfield B plan home has proven to be a comfort and joy to our living and we are always happy to tell of the many advantages in buying an Aladdin Rent-cut Home.

M. D. Heys.





THE OAKWOOD—Sure to Please—

Price Given
On Enclosed
Price List

And We Pay
The Freight

Here is as pretty a home as you will find anywhere—modern in design and attractive in appearance. There are four plans of the Oakwood, all different in size and arrangement. In plan A of the Oakwood, the bath room would provide a roomy pantry, opening off from the kitchen, if the bath room is not desired. In plan B, the middle bedroom could be reduced in size and used for a bath room if desired. In this way the other two bedrooms could be increased in size, or closets added, as preferred. In plan C the bath room can also be converted into a pantry if this change is wanted. Write us for further information concerning these or similar changes in plan arrangements. Since the Oakwood home is designed in pure Colonial architecture, the eave construction conforms to that style. The eaves of the Oakwood home are boxed and return straight to the walls of the house, adding much to the attractiveness of the exterior. With the Oakwood home you receive 6" x 6" built-up girders. The Oakwood plan A, B and C are provided with 2" x 6" floor joists on 16-inch centers. Plan K is provided with 2" x 8" floor joists on 16-inch centers. All rafters are 2" x 4" on 24-inch centers. Ceiling height 8 feet. The roof has a one-quarter pitch. Complete detail specifications mailed on request.

Cash Selling Cuts the Cost—Every
Dollar Brings 100 Cents Value.

Plattsburg, N. Y.

Dear Sirs:

Now that our home "Oakwood K" is finished and we moved in it August 3rd, I am going to tell how much we like it.

Everything was just the way you said it would be before I sent for it. Everything fitted so nicely and perfectly and you sent enough of everything, such as siding, roofing, etc., to do a good job and have some left over. Our Oakwood is built at 74 Bailey Ave. Should I build again it will certainly be an Aladdin. *Dion Sasu.*



A very popular and widely copied plan designed by Aladdin. It is complete in accommodation including a well placed bath room.

Plan "B" will go on narrow lot and offers a fine arrangement for a family of six—three bedrooms, living room, dining room and kitchen.

A thoroughly proven plan offering everything demanded for a home of five rooms and bath. It is impossible to secure greater utilization than is here represented.

A special feature of the Oakwood Plan "K" is the inclusion of a cellar stairs. If not wanted the space can be converted into a pantry.



THE CYPRESS — Economical to Buy, to Build — Price Given On Enclosed Price List — And We Pay The Freight

Here is a real gem of a home. Thousands of them have been built and they always prove satisfactory. Six different plans offer a large choice in room arrangement. Choose the one that meets your needs. Any one of these can be erected by inexperienced men easily and rapidly. We guarantee the material, guarantee safe arrival and guarantee you will be

satisfied. You take no risk, 6 ft. deep and is priced separate from the house so it can be ordered or left off or some other porch ordered in its place. Our desire is to make it easy for you to order just what you want. If you want more information before sending your order we will be glad to hear from you and answer any questions. The Cypress is furnished with 6" x 6" built-up girders, 2" x 6" floor joists on 16-inch centers and 2" x 4" rafters on 24-inch centers. Ceiling height 8 feet. The roof has a one-quarter pitch. Complete detail specifications mailed on request.



PLAN A
A great big living room is shown in this plan, together with two bedrooms, nice kitchen and bathroom.



PLAN B
The rooms in Plan "B" are proportioned differently although of the same accommodations as shown in Plan "A."



PLAN C
Notice the arch between the living room and dining room; also double window on side of living room.



PLAN D
Inside cellar stairs distinguish this plan. Every inch of space is used to good advantage.



PLAN E
Fewer rooms but bigger ones give this plan special attraction to many customers. Note the two big closets.



PLAN F
This is a one bedroom plan for a small family. All rooms are generous in size and well laid out.

Christina, Del.

Dear Sirs:

I could not praise my Cypress bungalow too much as we love ours and so does everyone else that sees it. They do not see how we got such good woodwork for so small an amount of money. Have had several offers to sell it but would not part with it for anything. I have my flowers all planted and it is a darling place to live in—just like a fairy cottage to me. Hope everyone else likes your bungalows as much as I do.

Mrs. Viola Cross.



THE CEDARWOOD—A Real Beauty—

Price Given
On Enclosed
Price List

And We Pay
The Freight

This home has enjoyed a continuous popularity for nearly twenty years. It is perfect in proportion and a type that will never be out of fashion. There are four plans to choose from. Plan "C" contains a living room, kitchen and three bedrooms. If a dining room is desired, the rear bedroom can be made into a kitchen and the outside rear door changed at no additional cost. Another change sometimes made in plan "C" is to make a bath room out of the middle bedroom, which slightly enlarges the front and rear bedrooms. The prices quoted are for siding on the exterior. In order to use shingles on the walls it is necessary to use wall sheathing under the shingles. See quotation for wall sheathing and building paper. The porch is 16 feet wide and 8 feet deep. If you do not wish to build the brick piers shown in the photograph we can furnish full length columns to extend to porch floor. Porch is priced separately so you can order this porch or

some other porch shown in the catalog or leave it off entirely if you so desire. The Cedarwood is furnished with 6" x 8" built-up girders, 2" x 8" floor joists on 16-inch centers and 2" x 4" rafters on 24-inch centers. Ceiling height 8 feet. The roof has a one-quarter pitch. Complete detail specifications mailed on request.

Cumberland, Md.

Dear Sirs:

I will be glad to give you permission to refer prospective customers to me regarding my Cedarwood Aladdin Ready-cut home. And I must say that I am well pleased with it. Everything went right to its place—didn't have any trouble whatever. Had plenty of material for everything and always some over. If I can be of any service to you, I'll be glad to do so.

G. R. Bottenfield.

A Letter From Massachusetts

Dear Sirs:

I am pleased with the treatment I received from your Company. You have been strictly fair and honest in all your dealings with us. I have already recommended your Company to some people and told them the material was all of the best grade and there was enough of everything—the quality of material and the way it fits could not be better.

MRS. C. FINNEY.





THE BEVERLY—A New Story and a Half Type—

Price Given
On Enclosed
Price List

And We Pay
The Freight

Purely American in design and uninfluenced by other schools of architecture the Beverly achieves distinction in its own right. While it is a real two story design its beautifully proportioned roof lines hold down its height in a way that is both artistic and practical. While the big chimney interestingly embellishes the front view, it may be omitted if economy must be practiced. The hood over the entrance door is of original and pleasing design. Window shutters add a colorful touch to the whole. A sensible vestibule with adjoined coat closet leads into an entrance hall. Curved arch links this with a really extensive living room.

The dinette is of ample size for the usual family but when enlarged dining facilities are required the extra wide arch permits extending table into part of living room. From the thoughtfully designed kitchen, entrance is had to the basement stairs. One downstairs bedroom and two on the second floor, with bath and clothes closets complete this most attractive home.

The purity and perfection of Aladdin Dollar-A-Knot quality materials insure the highest satisfaction and pride of ownership. A knot in a board is a defect that cannot be argued away. You do not need to paint knots and defects with shellac to hide them. There are no knots in exposed Aladdin lumber. Is it sensible to pay a higher price for poorer quality? Aladdin has a real guaranty back of its quality.

The Beverly is built with 6" x 8" built-up girders, 2" x 10" first and second floor joists on 16 inch centers and 2" x 6" rafters. Complete detail specifications sent on request.



Highland Falls, N. Y.

Dear Sirs:

Our Aladdin home that we built in 1926 is holding up fine and outside of painting we have not had one dollar's worth of repairs to make to date. If you have an extra catalog to spare I will appreciate same as I like to keep in touch with your Company and may take the notion to build another house some day. With best wishes for your continued success, I remain,

L. W. Birdsey



THE CHARLESTON—A Modified Cape Cod—

Price Given
On Enclosed
Price List

And We Pay
The Freight

The Charleston is an up-to-the-minute adaptation of colonial architecture. It is finding great popularity in the best suburban communities of the big cities and in thoroughly modern localities. Highly appealing to discriminating observers is the columned and gabled front entrance. The front door is flanked by side lights. Two groups of colonial columns lend dignity to the approach. Under its broad expanse of roof are found two spacious bedrooms, lavatory and closets. Two well proportioned dormer-windows give light and cross ventilation to the second story.

The living room has an expanse of twenty-two feet across the front of the house, with ample cloak closet. Four windows and glass front door serve this room. Arch leads to dining room from where a semi-open stairway leads above.

Two excellent bedrooms, each with closet, and both between occupy the left end of the house.

Generous sized kitchen with grade cellar stairway complete the interior accommodations.

The Charleston has 6"x8" built-up sills, 2"x10" joists, 2"x6" rafters and ceiling height of 9'. Complete detailed specifications are mailed on request.

Dear Sirs:

Hershey, Pa.

I am sending you a list of prospects whom I am quite sure are going to build in the near future. I have my cottage erected and am well pleased with both the appearance and the material used.

Harry M. Etter



SECOND FLOOR PLAN



FIRST FLOOR PLAN



THE VIRGINIA—Different—Interesting—Well Balanced—Price Given And We Pay On Enclosed Price List The Freight

The Virginia attracts instant attention because it is different, interesting and well balanced. The simplicity and economy of Colonial architecture are the keynotes of the Virginia. The house presents a cozy appearance that tells you it is more than a place to live—it is a Home. Both plans are alike in general arrangement but one contains three bedrooms and the other two bedrooms, allowing you to make your selection according to your requirements. In both plans of the Virginia the living room extends out at the side, thus giving a sun parlor effect to the home. The portion of the living room that extends out at the side is separated from the balance of the living room by a circling arch at the ceiling line. This arch does not extend down to the floor and thus it is possible to furnish the entire room as one, or to furnish the projecting portion as a sun room, if desired. You will notice

that the projecting portion of the living room is lighted by windows on three sides, a virtual sun parlor. See the colored interior photograph of the living room of the Virginia at the bottom of Page 8. The bedrooms and bath room are separated from the living quarters. Large generous clothes closets are provided for each bedroom which add a very valuable feature to the home. Our designers have used every available inch of floor space in these plans which mean economy to the builder. The greatest width of the Virginia home is thirty feet, making it possible to build this home on a lot forty feet or more in width. With the Virginia home you receive 6" x 8" built-up girders, 2" x 8" floor joists on 16-inch centers and 2" x 4" rafters on 24-inch centers. Ceiling height 8 feet. The roof has a one-third pitch. Complete detail specifications mailed on request.



Brighton,
Rochester, N. Y.

Dear Sirs:

In reference to your letter concerning our Aladdin Virginia home, it was very satisfactory and we would be willing to show anyone our home.

Everyone who has seen it so far has praised the design and workmanship. In building a ready cut Aladdin home, we have saved a considerable sum of money. My brother who built the home was well satisfied with the construction which saved a lot of labor and material.

John Webster, Jr.

Read the dollar
a knot guaranty
on page 7.





THE LARCHWOOD—Model of Space Economy—Price Given On Enclosed Price List And We Pay the Freight

All three plans of the Larchwood home are models of the Economy of Space in plan arrangement. Not an inch is wasted. The gable roofed porch gives originality and distinction to a fine home. The 12' x 8' porch is priced separately so it can be purchased with this house or with other houses shown in the catalog. The porch piers can be built of brick concrete blocks or cobble stones as shown. If desired, the wooden columns can be furnished to set down on the porch floor at no extra cost. The ornamental piers would then be unnecessary. With the Larchwood home you receive 6" x 8" built-up girders, 2" x 8" floor joists on 16-inch centers and 2" x 4" rafters on 24-inch centers. Ceiling height 8 feet. The roof has a one-quarter pitch. Complete detail specification mailed on request.

The modern trend in home building has definitely turned to small, convenient houses. Lower Investment Costs, Lower Maintenance Costs and Easier House Keeping all favor small homes.

Dear Sirs:

Canisteo, N. Y.

I want to thank you for your quick shipment, and service to me. Fourteen days after I sent you the money, the lumber was here—and such nice lumber. Everything is lovely. Am very busy with plumbers and carpenters so I can only write a few lines to you. I am very much pleased with my home.

Mrs. Horace Hoag.



PLAN C



PLAN D



PLAN E

The above plan is size 24x30 feet. A feature is the hall leading from dining-room to two bedrooms and bath. Closets are unusually large.

Larchwood "D" is size 24x32 feet and gives besides the accommodations of No. 1, larger rooms with a cellar stairs adjacent to the kitchen.

The largest size of the three plans, the Larchwood "E" includes all convenience possible in a house of this size—rooms being unusually well proportioned.



THE AVALON—Graceful and Stately—

Price Given
On Enclosed
Price List

And We Pay
The Freight

The Avalon is a graceful and stately home produced in the ever-popular Dutch Colonial type of architecture. Skillful handling of details is largely accountable for its charm. Nothing could be added to the Avalon to increase its beauty. The circling hood over the front entrance, the divided lights in the windows and front door, the shutters on the front windows, the pergola roofed sun parlor at the end of the house—these are the decorative touches that make the Avalon differently beautiful. The Avalon is priced with siding on the outside walls but is pictured with shingles used on the outside walls of the second floor. Shingled side walls can be provided without extra cost providing wall sheathing is used under them. Wall sheathing, sub floor sheathing and building paper are included with a Double Construction home. Of course, if siding only is used on the outside walls, the same color effect can be obtained as shown in our illustration by using light paint for the lower floor and dark paint for the upper. The circular hood for the front entrance reaches you completely built-up making it only necessary to set it in place. Think of the labor saving this means to you. It would take a carpenter a day to lay out, cut, measure and assemble just this one small part of the home. We cut the hood by machinery and complete it with the brackets in less than an hour. The interior of the Avalon leaves nothing to be desired in a home of this size. The center hall with the conveniently located coat closet and the stairway to the second floor, leads to the left through a square, cased opening or curved plastered arch, (whichever your prefer) to a large living room. From the living room a French door leads to a roomy sun parlor that will perhaps be the most popular room in the house. From the living room a door also leads to the rear hall. The rear hall connects the living room with the kitchen. Off from it opens a first floor toilet, a convenient closet and the door to the cellar stairs. Both the dining room and the kitchen are large and the door and window arrangement in these rooms permits perfect arrangement of fixtures and furniture. The second floor contains four large, corner bed rooms, all with three windows and all lighted on two sides. An exceptionally large closet is provided off from each bed room and a linen closet will be found in the hall. The stairwell in the second floor hall is guarded by an attractive rail, balusters and newel posts. The sun parlor pictured on the Avalon is included with the house at the price quoted as are also green, slate-surfaced asphalt strip shingles for the roof and the ornamental shutters for the front windows. With the Avalon you receive 6" x 8" built-up girders, 2" x 10" first and second floor joists on 16-inch centers and 2" x 6" rafters on 24-inch centers. Ceiling height 9 feet first floor and 8 feet second floor. The main roof has a one-quarter pitch. Complete detail specifications furnished on request.

Basnett, N. Y.

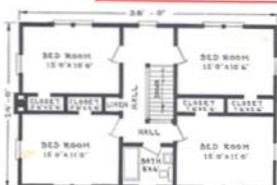
Dear Sirs:

We have been living some time in our new Avalon home and are so well pleased with it that we wish to tell you about it. There isn't one thing to it that we would want any different than it is. Before we built you know we changed the French doors into an archway and placed the chimney at the north of the house, which is a great improvement. It makes the living room just beautiful. Everyone that sees it admires it. A neighbor of ours is going to sell her lot here and as soon as she does she is going to put up one of these homes. She likes it very much. We are very well pleased with everything. I know there will be others who will put up your houses here.

Mr. and Mrs. Geo. Dilligan.



FIRST FLOOR PLAN



SECOND FLOOR PLAN



THE CAMBRIDGE—One of Aladdin's Newest—Price Given On Enclosed Price List And We Pay The Freight

New England architecture was the inspiration to our designers in developing this fascinating home. Its simplicity of form and clearness of line appeal strongly to the most fastidious. And it presents the latest and most modern thought in home building—including space as a part of the home for housing your automobile. This space is no longer called a garage, but the car room. Its entrance is enclosed with two handsome six panel doors, in harmony with the main entrance door.

Note shutters included for front windows.

The Cambridge interior includes every facility of the modern American home. Every room in the house has a double exposure—cross ventilation—seven rooms and bath.

The more carefully you study the interior details the more thoroughly you will approve its comfort, convenience and livableness.

Spacious living and dining rooms are joined by a generous arch. Coat closet is conveniently placed. Kitchen with grade cellar entrance is of most modern layout. The downstairs bedroom has the facility of toilet, which latter also opens into hall connecting to dining room and car room. The latter is a full twenty feet long.

Upstairs you will find two excellent bedrooms, each with closet while both linen closet and storage room complete this up-to-the-minute home.

The Cambridge is built with 6" x 8" built-up girders, 2" x 10" first and second floor joists on 16-inch centers and 2" x 6" rafters. Complete detail specifications sent on request.



FIRST FLOOR PLAN

A Letter from Rhode Island

North Scituate, R. I.
 Gentlemen: I have just recently completed one of your homes and am very much satisfied with it. Would you please send me your latest book on your small homes?
 THEODORE N. HOENER

Holland, Mich.
 Dear Sirs:
 I will always be pleased to show the Whitehall home of mine to anyone, as it has given me entire satisfaction and is all you claimed for it.
 I am very proud of my home.
 Wm. H. Lundie



SECOND FLOOR PLAN



THE STRATFORD — Enduring Beauty —

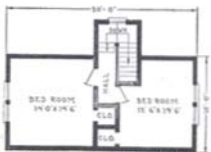
Price Given
On Enclosed
Price List

And We Pay
The Freight

Modern architecture combined with skillful interior design distinguishes the Stratford—an immensely popular Aladdin home offered in two different sizes and plan arrangements. The Stratford is substantial—a lifetime home. Many distinctive touches lift the Stratford out of the ordinary. The snubbed gables—the shutters on the front windows—the gable roofed projection at the front providing for the entry and coat closet—the massive, circle top front door with heavy, ornamental hinges and Colonial style cylinder lock set—these are only a few of the many features that will appeal to you in this home. It is a home that will attract attention and cause favorable comment in any locality. At the prices quoted, siding is furnished for the outside walls. However, if wall sheathing is purchased with the home as quoted separately, Cedar shingles as shown in the illustration can be furnished for the outside walls at no difference in price. The iron railing on the front terrace is included. Curved, plastered arches are suggested for the openings between the living rooms, dining rooms and entries and for the opening between the living room and sun room of the Number 2



STRATFORD No. 1—1st FLOOR PLAN



STRATFORD No. 1—2nd FLOOR PLAN

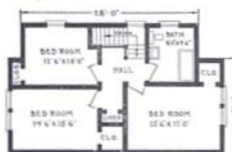
plan but square, cased arches can be furnished if desired at no difference in price. With the Stratford home you receive 6" x 8" built-up center girders, 2" x 10" first and 2" x 8" second floor joists on 16-inch centers and 2" x 6" rafters on 16-inch centers. Ceiling height 8'6" first floor, 8' second floor sloping to a minimum of 6' at front and rear. The roof has one-half pitch. Asphalt strip shingles are furnished for the roof covering. Complete detail specifications mailed on request.

ALADDIN SUPER WALL BOARD

Aladdin Super Wall Board makes an ideal inner wall in place of lath and plaster, for all rooms, walls and ceilings. It comes to you in a natural light cream surface entirely suitable without decoration for attractive appearance. Either cold water joint or ordinary joint can be used if you desire to decorate. It is a full half inch thick, strong, tough, fire-resistant and vermin-proof. Its insulating value, against heat and cold, is superior to lath and plaster as reported by the United States Bureau of Standards.



STRATFORD No. 2—1st FLOOR PLAN



STRATFORD No. 2—2nd FLOOR PLAN



THE MADISON—A True American Home— Price Given On Enclosed Price List And We Pay The Freight

It would be hard to find a more charming home than the Madison. The roof lines are especially well proportioned. Many letters have been received from enthusiastic owners of this lovely home. It can be purchased in your choice of three different sizes and plan arrangements. The prices quoted are for siding on the exterior. If you wish to use shingles on the outside walls as shown in the illustration, it will be necessary to use wall sheathing under them. With double construction we furnish wall sheathing and building paper, making it possible for you to use either siding or wood shingles on the outside walls. An interior view of the Madison is shown at the top of Page 8. With the Madison home you receive 6" x 8" built-up girders, 2" x 8" floor joists on 16" centers and 2" x 6" rafters on 24" centers. Ceiling height 8'6". The roof has a one-third pitch. Asphalt strip shingles are furnished for the roof at the quoted prices. Complete detail specifications mailed on request.



With all Madison plans we have arranged for a vestibule at the front giving space for coats as shown in plans below. A French door is furnished between the living room and vestibule and the outside door is a circle top door same as we show for our Stratford and Canterbury homes. This vestibule arrangement is included in the prices quoted for the Madison home.

Plan "A," a perfect two bedroom arrangement that will go on a 40-foot lot. Big value for every invested dollar is surely represented here.



Plan "C" is size 35 x 24 feet over all. A wonderful 22-foot living room, and large dining room feature this plan.

The Construction Used in an ALADDIN HOME Is the Same as That Used in the Best Architect-Designed, Contractor-Built House Erected Anywhere

—
SAVE
WASTE

—
SAVE
TIME

—
SAVE
MONEY



A beautiful three bedroom home, size 42 x 24 feet over all. Many buyers tell us they have saved a good thousand dollars or more on this house.



THE UNIVERSITY — Popular Everywhere — Price Given On Enclosed Price List And We Pay The Freight

This home has been extremely popular in all sections of the country. It is a typically modern plan and typically American.

The roof treatment is very interesting with its large and small gable grouping. We furnish 12-inch siding for this home, which with its mitered corners, makes a beautiful exterior.

The living room is excellently proportioned, with fireplace taking up no room inside.

Arched entrances are shown leading to living room from vestibule and dining room. The dining room projects from the side of the house, giving a size of 12' x 11' 6" in Plan 1 and 13' x 2' in Plan 2.



PLAN No. 1

Arched entrance leads to hall which separates the two bedrooms.

A modern sized and arranged kitchen has rear outside entrance as well as door to basement.

Every facility found in the most modern home has been included in The University. Three coats of paint are included, the undercoat being of Aluminum. Knottless exposed lumber is your guaranty of real lasting quality.

Write us with any questions about The University.

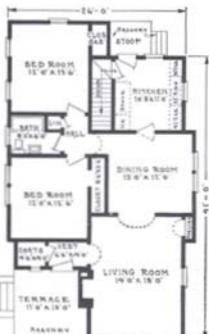
Sills are 6" x 8" built-up, joists 2" x 10", rafters 2" x 6" and ceiling height 8'6".

Complete detailed specifications will be sent on request.

Batavia, N. Y.

Gentlemen:
I am writing you to let you know I received my cottage in nice time and in good shape. I have it up and living in it for the past two weeks and indeed very much pleased with it. Everything went together so nice and plenty of everything.

John R. Fenton.



PLAN No. 2

THE FERDALE

Price Given
On Enclosed
Price List

And We Pay
The Freight

Aladdin's Readi-Cut
System Saves 18% of
Usual Lumber Waste



Built as Model Home in Detroit

An exquisite example of modern simplicity in home architecture is presented in this wholly new creation. It appeals instantly to the most fastidious. Originality of treatment is shown in this recessed and panelled entrance, surmounted by small well proportioned gable. A triple mullion window is observed in the front of the living room, while double mullion matches this in the front bedroom. Wide siding adds a final touch of values. Two sizes are illustrated below, one of two bedrooms and one of three. These plans merit the closest study which will result in highest approval of the skill of the designers. Thoughtful consideration has been given to the comfort and needs of the family. Well proportioned rooms, ample closet room and wall space and step saving placing of communicating rooms testify to the values of the Ferndale. Write us for additional information. Sills are built up of 6" x 8" timbers, joists are 2" x 8", rafters 2" x 4" and ceiling height 8'6". Complete detail specifications will be mailed on request.

Dear Sirs:

Chicago, Ill.

The home I bought of you in 1926 has been giving very good service and we are highly pleased with it. Instead of being just a summer cottage as intended, we have never missed a week end no matter how cold the weather.

We enlarged and glazed the porch three feet, making a fine sun room and built a porch across the back and glazed it, keeping one half for a bath room instead of a stoop as pictured in the Statler which we bought. You may refer prospective customers to us at any time. Our cottage is at McHenry, Ill., and is always admired as a doll house, compact and yet with every convenience, making it ideal. Please send me another catalog.

Mrs. H. C. Buttery

Read This Letter from New York

New York, N. Y.

Dear Sirs:

Mr. Cloman completed the erection of my home which I ordered from you in May. I was down to see it and I can say, with most of your satisfied patrons, that my home is the most picturesque building in the community and it is attracting the admiration of all around.

I have given my word to have my home shown to anyone wishing to see it, both the inside and outside, during my absence. As a satisfied customer I shall try to keep the Aladdin on top.

John R. Hillery



PLAN No. 1

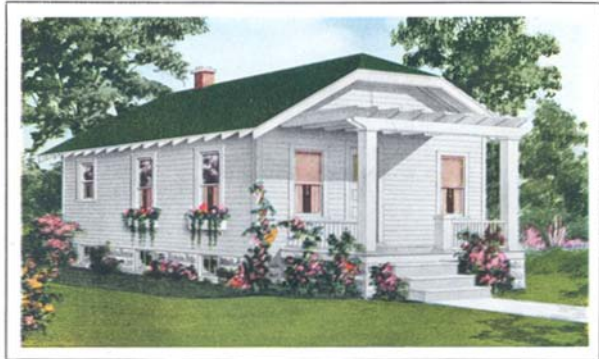
•
Easy to Buy

•
Easy to Build

•
Easy to Sell



PLAN No. 2



THE ELMWOOD—Four Ways To Build This Home

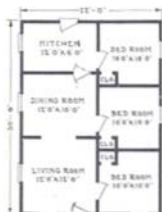
Price Given
On Enclosed
Price List

And We Pay
The Freight

Four plans of the Elmwood home offer a fine choice of room arrangement in this attractive home. Two and three bedroom plans are available. Some of our customers who select the Number 1 plan have us place the bath room door in the partition between the kitchen and bath room. They then use the bath room for a pantry. Others have us provide a cased opening between the kitchen and bath room and they then use the bath room as a dining alcove. When this last described change is made we often omit the partition between the living and dining rooms, forming a living room 12' x 19' in size. Either of these changes may interest you providing a bath room is not desired. Similar changes can be made



PLAN A



PLAN B

in any Aladdin home. The 14' x 8' pergola type porch with weather proof roof is priced separately so you can purchase it with your home or not, as you prefer. Many purchase and use the Cedarwood porch on the Elmwood. With the Elmwood home you receive 6' x 8' built-up girders, 2' x 8' floor joists on 16-inch centers and 2' x 4' rafters on 24-inch centers. Ceiling height 8 feet. The roof has a one-quarter pitch. Complete detail specifications furnished on request.

Seymour, Ind.

Dear Sirs:

Just wanted you to know how well pleased we are with the Elmwood house plan we ordered from your company. It is a nine days' wonder in this town. So many from all around here have come to see it and I think you will sell more here, as all are so favorably impressed. With the few changes I ordered I think it will make an ideal home for a small lot.

I am sure we saved \$500 at the least, besides getting in so soon. People can't realize that outside of the basement we will be getting in our new home in less than two months, with just two men doing the work who are not really carpenters. My husband is completely sold on the Aladdin Way and we want to thank you for the courteous treatment we have received from your company.

Mrs. Mary K. Becker.



PLAN C



PLAN D

The ALADDIN Company Belongs To
No Price Fixing Trade Associations,
Pays No Profits Or Commissions To
Dealers Or Agents, And Thus Insures
Full Value For Every Dollar You Spend
On Your Home.



THE FAIRFIELD—Bright and “Homey”—

Price Given
On Enclosed
Price List

And We Pay
The Freight

There is a charm about the Fairfield that attracts your instant attention. It is a bright and “homey” plan. The home is so distinctly attractive that it has been necessary for us to design it in two different plans; one provides for a 26-foot wide home and the other for a 28-foot wide home. This is to adapt the house to lots of different frontage. In both of the Fairfield plans our cellar stairway addition is arranged off the rear of the kitchen and is included at the price quoted. This permits entrance direct to the kitchen or to the cellar, from the outside of the house. The porch also is an integral part of the home and is included in the price. In the No. 1 plan the living room extends across the entire front of the house. Two bedrooms are provided for in this plan. An extra bedroom 10 x 12 feet in size could be obtained if desired by taking the space from the end of the living room. This would leave the living room 16 x 12 feet in size and would give an arrangement and number of rooms practically the same as in the No. 2 plan. This change can be made for you in the No. 1 plan for \$14.00 additional. Three bedrooms are arranged in the No. 2 plan. The fireplace in the end wall of the living room is a very cheerful feature of this home but it need not be built if not desired. If the fireplace is not used the two small windows on each side of the chimney can be omitted and one full size window furnished in substitution at no difference in price. The finely proportioned dormer in the front roof embellished by the three unusual brackets and the end of the dining room projecting out as a bay window beyond the line of the main house are outstanding touches that help to beautify this striking home. The Fairfield is a home that will give complete living satisfaction and ever increasing charm throughout the years to come. With the Fairfield home you receive 6” x 8” built-up girders, 2” x 8” floor joists on 16-inch centers and 2” x 6” rafters on 24-inch centers. Ceiling height 9 feet. The roof has a one-quarter pitch with a two-foot eave projection and asphalt strip shingles are furnished for the roof. Complete detail specifications furnished on request.



Ursine, Nevada.

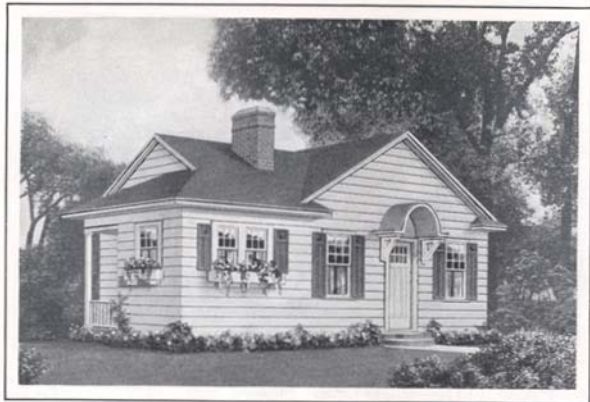
Dear Sirs:

We have your Fairfield house purchased from you last spring completed. We are well pleased with the treatment we received from your company. You have been strictly fair and honest in all our dealings with us. We have already recommended your company to several people in this community and told them the material was all of the best grade and there was enough of everything. Our carpenters claim the material was as good as they had used in years.

Edwin Lytle.

Remember that the plan arrangement of any Aladdin Home can be reversed so the rooms will come on the opposite side to that shown, if that arrangement will better suit your location.





THE GABLES — Quint and Original — Price Given On Enclosed Price List And We Pay The Freight

Unusual features distinguish this new and original home. A charming hood graces the front entrance. It is supported by well proportioned brackets and offers ample protection to the terraced steps. Roof lines, both gable and hip are distinctive. The rear service porch is an attractive feature. Two sizes are offered to you, if you are attracted by the Gables. In both, the living room is large and given greater spaciousness by the alcove type dinette. Note that the kitchen has light and exposure on three sides. Cellar entrance is provided directly from the kitchen. Two bedrooms with ample closets, hall and bath

offer every convenience and comfort. The built-in goodness, genuine quality of all materials and the beauty of this home will be a great satisfaction to every owner. Remember Aladdin's guarantee of satisfaction or your money back is your protection in building the Aladdin way. "Sold by the Golden Rule" has been tested by thousands of home builders to their life time gratification.

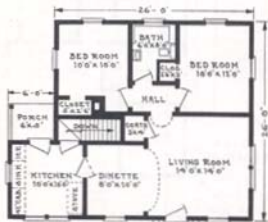
The Gables is furnished with 6" x 8" built-up sills, 2" x 8" joists and 2" x 4" and 2" x 6" rafters. Ceiling height is 8½ feet. Complete detail specifications will be furnished on request.

Mount Union, Pa.

Dear Sirs:

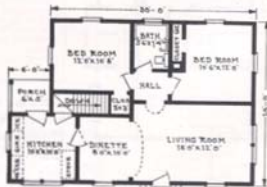
Our house is completed and we are very much pleased with it. As soon as the landscaping is done, we will send you a picture of it. If at any time a representative from your company is in this section, we would be very glad to have him stop in to see the house. Many people interested in building have been to see it and we have been very glad to recommend your company. We found everything as satisfactory as you said it would be. We would like to have you send us a new book and if you have any advertising material to be distributed, we would be glad to have some.

Mr. and Mrs. M. R. Carruthers



PLAN No. 1

Shipment of any Aladdin Home can be made a few days after receipt of order.



PLAN No. 2



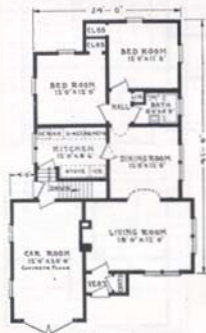
THE CANTERBURY—Last Word in Modernity—

Price Given
On Enclosed
Price List And We Pay
The Freight

A home of six gables, modern to the last degree, of rugged stability in design and practical in its livableness, the Canterbury measures up to highest American home standards. Our designers drew their inspiration from English sources in its exterior features and have perfectly adapted them to American requirements. Both front entrances are in thorough harmony in form and detail. The heavy hinges are copies of old English craftsmen while the doors themselves are taken from similar sources. All windows are of English cottage type—divided lights.

Two plans of interior are offered. Plan No. 2 is suggested where the builder does not desire to arrange a basement under house. The car room also becomes the furnace room, with space available for laundry tubs too. Naturally a substantial saving is made in completed cost by omitting basement. A careful study of this plan will show its many advantages. Plan No. 1 can be arranged for stairway to second floor with a third bedroom, hall and closet. If stairway to second floor of Plan No. 2 is desired we will be glad to suggest a stairway location.

The Canterbury is furnished with 6" x 8" built-up girders, 2" x 10" floor joists on 16-inch centers and 2" x 6" rafters on 24-inch centers. Complete detail specifications will be sent on request.



If the materials you receive with your home are not all that we claim them to be in quality and quantity, the Aladdin Company stands ready to return your money.

Windsor, N.Y.
The Aladdin Company,
Creators of Happy Homes:

We are living in our little home, though it is not entirely finished, and enjoying the beauty of everything, and the convenience, economy, warmth and brightness. I awake every morning with glad anticipation of working in the pretty cozy rooms and here the Aladdin Co. and my clever husband and son who have done nearly every bit of the work and enjoyed doing it.

We have lived in several much more costly homes, but none so really nice and so comfortable and pleasant. We thank you again for your kindness and wish you continued prosperity.

John and Nellie Eisenhart





THE WHITEHALL—A Splendid Model—

Price Given
On Enclosed
Price List

And We Pay
The Freight

There is a strong appeal in this pretty hip-roof cottage. Six convenient plan arrangements offer a fine selection. All six of the Whitehall plans are 20' x 24' in size. Three of them are arranged to face the wide way to the street and three of them face the narrow way. Ornamental shutters are furnished for the front windows of the Whitehall home. Paint colors as pictured can be furnished for the shutters or a plain color can be used if desired. If a cellar is desired under the Whitehall home, see our separate quotation on Cellar Entrance Addition on Page 48. Select the plan that suits you best and then, if you desire, write for further information. We can make shipment within a week after receipt of your order. With the Whitehall home you receive 6' x 6' built-up girders, 2' x 6' floor joists on 16" centers and 2" x 4" rafters on 24" centers. Ceiling height 8 feet. The roof has a one-quarter pitch. Brick terrace and railing at front are not included in price but if desired, the two sections of iron railing with the two iron corner posts can be furnished for \$9.00. Complete detail specifications furnished on request.

Philadelphia, Pa.

Dear Sirs:

I have just returned from spending my vacation in my Aladdin Whitehall and I want to thank you for all the help you gave me in planning same. It is a beauty—all that you claimed and more, and is really admired by all who see it. Please send me your catalog as I am now anxious to have an Aladdin garage to match my bungalow.

Miss I. B. Bookroom.





THE REDWOOD—A Little Kingdom of Your Own—

Price Given
On Enclosed
Price List

And We Pay
The Freight

The Redwood is one of the prettiest small homes ever designed. It gladdens the hearts of those who are looking for a small, compact house of up-to-date appearance. It is astonishing to find so complete a home in such small compass and with so many conveniences at so low a price. And the quality of the materials that come with the Redwood is identical with that found in the largest and highest priced Aladdin home. There is only one grade in all Aladdin homes—the best. Good materials make a sturdy, lasting home and one that is always easy to sell should you want to do so. The construction used in an Aladdin home is the same as that used in the best Architect-designed, Contractor-built house erected anywhere. We are offering this excellent home at a price only made possible because of our tremendous buying power, our direct to you sales plan and our cash prices. You buy not from a retailer, not from a jobber, not from a wholesaler, but direct from the manufacturer. We make it easy for you to buy right, easy for you to build well and easy for you to own this splendid home. You can build the Redwood yourself for the materials you receive are cut to fit and we furnish drawings and pictures showing where each piece goes. We also furnish a book of instructions telling you just what to do, when to do it and how to do it. Our book of instructions also tells you about many "short cuts" that will save you time when building your home. Even women have told us that they erected their Aladdin Home or assisted in the erection. With the Redwood home you receive 6" x 6" built-up girders, 2" x 6" floor joists on 16-inch centers and 2" x 4" rafters on 24-inch centers. Ceiling height 8 feet. The roof has a one-quarter pitch. Complete detail specifications furnished on request.



REDWOOD No. 1



REDWOOD No. 2

A Letter from Virginia

Gentlemen:

The little house we bought from you last May is completed. Everything went together nicely. The material was much better than we could have bought here and you furnished plenty of everything. We are more than pleased with our little home. If we ever build another will certainly buy from you as we figure we saved around \$300. We thank you for your kindness and fair dealings and will do all we can in the future to boost you.

Mr. and Mrs. J. E. Dickson.

(Mail address sent upon request).

Scarsdale, N. Y.

Dear Sirs:

Kindly send me a catalog. I was wondering if you wouldn't like to know about eleven years ago you sent me a little cottage and it has been very satisfactory. Of course we had to add to it, but now when everybody more or less, is feeling the depression, our little cottage on the hill is bringing in a nice little income to us. Would be delighted to look over your new catalog.

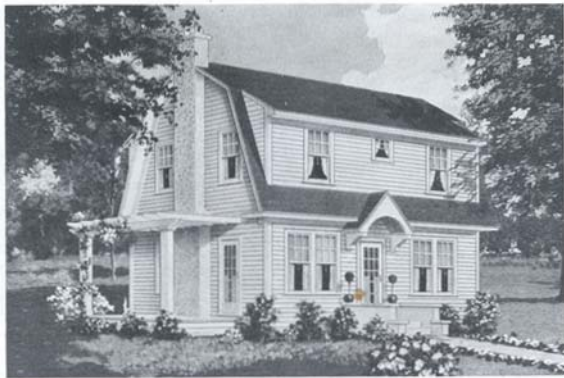
Mrs. Oscar Harmer.



REDWOOD No. 3



REDWOOD No. 4



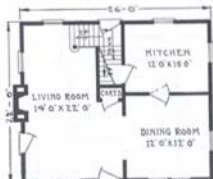
THE PLYMOUTH—A Perfect Home—

Price Given
On Enclosed
Price List

And We Pay
the Freight

The Plymouth is often referred to as a "perfect" home because it is average in size, pleasing in appearance and convenient and complete in arrangement. While the impression is that of a story-and-a-half house the second floor rooms are square with full height side walls. Two plans of the Plymouth are shown below. The larger proportions of the Number 2 plan have induced us to include more windows in the second floor bedrooms. In both plans, closet space is ample. This is particularly true in the Number 2 plan which provides for two closets off from the large, front bedroom, a closet off from each of the other bedrooms, a linen closet off from the hall and another large closet off from the hall large enough for trunks or storage. In both plans, a French door leads to the porch at the side. The porch is priced separately and can be included with your home if desired. With the Plymouth you receive 6"x8" built-up girders, 2" x 8"

first and second floor joists on 16-inch centers and 2"x4" rafters on 24-inch centers. Ceiling height 9 feet first floor and 8 feet second floor. The main roof has a one-quarter pitch and green, slate-surfaced asphalt strip shingles are furnished for the roof covering. Complete detail specifications furnished on request.



FIRST FLOOR PLAN No. 1



FIRST FLOOR PLAN No. 2



SECOND FLOOR PLAN No. 1



SECOND FLOOR PLAN No. 2

Shamokin, Pa.

Dear Sirs:

Would you please send me your new Aladdin catalog? I am sure pleased with my investment in a Plymouth some years ago. It is the best investment I could have made, and I figure I saved from \$800 to \$1000 in building it. Many people think the house doesn't have much room from looking at it outside, but when they step inside they are astonished at the amount of room and how nicely it is laid out. If I know of anyone who wants to build will let you know.

Fred Hess.



THE BROOKLINE—With Built-in Car Room—

Price Given
On Enclosed
Price List

And We Pay
The Freight

The Brookline took first prize in Aladdin's contest for the most perfect home for the Average Modern American Family. And it is a gold medal home in every sense of the word. It is early American in atmosphere, clean in form and appealing in detail. The entrance is of Colonial inspiration with its six panel door and panel embellished recesses. The center upper recessed panel is of glass with light behind it. The car room entrance doors are of matched design to the front door. Framed louver over these doors gives extra ventilation to this room.

Bay window projecting from dining room affords a window seat in that room. On entering you find the vestibule provides ample space for coats. Living room is arranged with three windows and adequate wall space and is separated from dining room by extremely wide arch.

Access to car room may be had either from the outside or from kitchen through cellar entrance. Kitchen is most efficiently laid out to save steps. Two bedrooms, bath and closets complete the Plan No. 1 while Plan No. 2 shows three bedrooms.

Remember that you receive Dollar-A-Knot quality, an exclusive guaranty of goodness only obtainable from the Aladdin Company. This same quality is furnished without exception to all Aladdin customers—small houses as well as large.

The Brookline is furnished with 6 x 8 inch built-up girders, 2 x 10 first floor joists on 16 inch centers; 2 x 6 rafters on 24 inch centers. Complete detail specifications sent on request.



PLAN No. 1

Deer Lodge, Montana.

Dear Sirs:

The material for my home is wonderful—much better than expected. We had plenty of everything and some left over and your service was very prompt. The house went together nicely and we had no trouble at all. I am well satisfied with everything.

R. M. Moore.

Housing the modern car in a built-in car room is one of the most sensible, convenient and practical results of newest home design!



PLAN No. 2



THE BELHAVEN—Plenty of Style— Price Given
On Enclosed
Price List And We Pay
The Freight

There is plenty of style in the Belhaven home—style at low cost. It combines a fine exterior with four fine plans. The Belhaven is a home that for convenience and compactness cannot be surpassed. Little things, well planned, add much charm; such as well proportioned hood over front entrance, dormer over front windows, ornamental shutters, divided lights in windows, fifteen light front door. These are all items that add much to the value of your home at very little

cost. Plan D is provided with an inside cellar stairway. If you wish to purchase one of the other Belhaven plans and desire a basement or cellar beneath the home, we suggest that you purchase our Cellar Stairway addition as described and priced on page 48. It provides a practical and convenient means of reaching both the cellar and the kitchen from the outside. The Belhaven home can be built with terraced front lawn as shown or set upon a higher foundation. With the Belhaven home you receive 6" x 8" built-up center girders, 2" x 8" floor joists on 16 inch centers and 2" x 6" rafters on 24 inch centers. Ceiling height 8 feet. The roof has a one-quarter pitch. The hood over front entrance and ornamental shutters as shown are included in the price quoted for the house. Complete detail specifications are furnished on request.



PLAN A



PLAN C



PLAN B



PLAN D

Darlington, Wis.

Dear Sirs:

Have been so busy I haven't taken time to tell you how pleased I am with my new Belhaven house. It has attracted as much attention as "The Old Curiosity Shop" because everything has been so much better than expected. You are at liberty to use my name any time because had it not been for you I could not have had my home for the money was from an estate, and all I had.

Mrs. J. F. Talbot.

**Selling for Cash Makes
These Low Prices Possible.**



THE CAPITOL—Fine Dutch Colonial Type—

Price Given
On Enclosed
Price List

And We Pay
The Freight

The Capitol is an imposing home. Large sized rooms throughout and four bedrooms with ample closet space make it a wonderful house for a large family. Some of our customers use the library as a breakfast room, opening off from the kitchen. Others have used the same space for a first floor bedroom and still others have used it for a first floor toilet with hallway connecting the living room with the kitchen. On the second floor the sewing room is often used as a second bath room, opening off from one of the front bedrooms. A square, cased opening is regularly provided between the hall and living room and between the hall and the dining room. Each opening is just the proper size for a pair of French doors. If French doors are desired they can be purchased separately as described and priced on Page 48. Another treatment, often used in present day homes is to use curved, plastered arches in place of cased openings. If you do not wish to use French doors in the openings above mentioned, curved, plastered arches can be furnished in place of the cased openings at no difference in price. Changes of this nature, to make your new home express your own individuality, are always worth considering. The 14' x 8' porch and the 14' x 10' porte cochere or covered drive, are both roofed with a tight, weather-proof roof and both are priced separately so they can be purchased with the home or not, as you prefer. With the Capitol you receive 6" x 8" built-up girders, 2" x 10" first and second floor joists on 16-inch centers and 2" x 6" rafters on 24-inch centers. Ceiling height 9 feet first floor and 8 feet throughout second floor. The roof has a one-quarter pitch and slate-surfaced asphalt strip shingles are included. Complete detail specifications furnished on request.

Coral Gables, Fla.

Dear Sirs:
It would give me pleasure to show our Aladdin Capitol home at any time. Every piece of lumber fitted perfectly and was free of knots and twists.

Everyone knows the destruction of that hurricane September 17, 1926. Houses all around me rolling like barrels, but after the storm I found I did not lose a board. Many visitors came to see it as the "Hurricane Proof Home".

If I built other houses, I certainly know by experience I will save all waste of lumber, 25% labor and at least 50% time in building an Aladdin.

Thomas Lawrence.



FIRST FLOOR PLAN—THE CAPITOL



SECOND FLOOR PLAN—THE CAPITOL



THE BREWSTER—Beautiful in Its Simplicity— Price Given
On Enclosed
Price List And We Pay
The Freight

Supremely good taste was employed by our designers when they formulated the Brewster. It is a choice architectural gem, clean in line, employing a form of simple beauty and exquisite simplicity. It is truly a work of art yet most practical in execution for its very simplicity is reason for its astonishingly low cost.

You receive highest quality materials, lowest prices, prompt shipment and a guarantee covering quantity, quality and safe arrival.

Waste of materials is eliminated, every foot of lumber giving 100% value in space, convenience and comfort. The columned and hooded entrance incorporates a commodious vestibule. The choice of two interiors are afforded you, each with about the same facilities but differently arranged. Each has excellent living room, two bedrooms, dinette, bath and closets. The Brewster can be furnished in a three bedroom plan if required. Write us with your suggestions and a plan will be sent you.

If you have a preference for shingled outside walls we can also meet your wishes. While a brick foundation is shown in the above picture, the foundation can be built of solid concrete, concrete blocks or tile. Wood shingle roof is also available on request.

The Brewster is furnished with 6" x 8" built-up girders, 2" x 8" joists on 16-inch centers and 2" x 6" rafters on 24-inch centers. Complete detail specifications will be sent on request.



Lyons, N. Y.
Gentlemen:

We will be glad to have you refer any customers you wish to us. We are pleased with our house and will show anyone thru and answer letters of inquiry. We are enclosing photographs of our home which we believe is better than the one in your catalog.

J. F. Schnabel

An Aladdin Home is Safer
than a Wall Street Investment.





THE HAMILTON—A Tremendously Popular Design—

Price Given
On Enclosed
Price List

And We Pay
The Freight

Many Aladdin houses have been built of brick veneer. We, of course, will quote on any design in the book, omitting siding and casings and furnishing special window and door jams. The Hamilton illustrates the attractions of the type. While the vestibule entrance shown above is of stone, it can be constructed of brick or, as is sometimes done, in wide siding. The Hamilton is a beautifully proportioned structure and will match the finest homes in any neighborhood. We will, of course, furnish this design with siding if preferred. Every modern thought is expressed in the arrangement of the interior. Note the large vestibule with cloak closet, arched opening leading from living room, downstairs toilet, bedroom, breakfast room and grade cellar entrance. Kitchen design is planned for step saving. Two splendid bedrooms are found on second floor with linen closet and bath. We are proud to present this new Aladdin home, confident that it will give the highest satisfaction to every owner. We would like to give you more information about it if you will write us. Sills are built up size 6" x 8", joists are 2" x 10", rafters are 2" x 6" and ceiling height 8'6" first floor and 8' second floor. Complete detail specifications will be mailed on request.

Aladdin furnishes highest quality materials, performs about one-third of the construction labor for you by machinery at the factory, quotes one low price on the entire bill of material and ships everything in one car, freight paid to your station. Satisfaction or your money back is guaranteed.

Osseo Park, N. Y.

Gentlemen:

You may refer prospective customers to me for information regarding my experiences with the Aladdin system. My dealings with you have been highly satisfactory and it would be a great pleasure for me to give my highest recommendation of your system to anyone. The address of my Aladdin home is Stamford, Vermont.

J. P. Coco.





THE BIRCHWOOD — Dream-like Perfection — Price Given On Enclosed Price List And We Pay The Freight

The Birchwood is a home of dream-like perfection. It will measure up to your highest expectations, from the strength of its sturdy timbers to the charm and beauty of its woodwork and finish. Shrewd buyers immediately recognize the opportunity to avoid paying the top prices charged by regular dealers—an opportunity made possible by dealing direct

with the Aladdin Mills. It is just like buying your materials at a special discount of twenty percent to thirty percent. Comparing the price of this attractive home with the price asked by other concerns, prove the big savings Aladdin gives you. The porch is priced separately. It can be purchased with the home or, if you prefer, it can be omitted. Perhaps some other porch shown in this catalog would be more satisfactory to you. The wooden columns of the Birchwood porch can be furnished to rest on the porch floor at no difference in price. It would then be unnecessary for you to build the ornamental brick piers. With the Birchwood house you receive 6" x 8" built-up girders, 2" x 8" floor joists on 16-inch centers and 2" x 4" rafters on 24-inch centers. Ceiling height 8 feet. The roof has a one-quarter pitch. Complete detail specifications furnished on request.



PLAN A



PLAN C



PLAN B



PLAN D

Winthrop, N. Y.

Dear Sirs:

I am very much pleased with my Birchwood house. The carpenter I had working on my house claimed I saved at least half on the price of labor and everything fitted fine, and the finishing material was better than I expected. I am well satisfied with everything you sent.

W. S. Keegan.

Buying All Materials From One Company Under a Strong Guarantee of Satisfaction Commands for You the Best Price and Saves Trouble.



THE MAPLES—Be It Ever So Humble—It's Our Own—

Price Given
On Enclosed
Price List

And We Pay
The Freight

The Maples brings happiness to thousands of families who do not require a larger home. Also, it permits the family of modest means to get into a snug, warm and strong little home at almost unbelievable low cost. There is more pleasure and satisfaction in owning a small home than living in a large rented one. At the end of the year what work you have done has been for yourself and not for the landlord. This home is being put up by many owners who have had no experience in carpenter work. Our instructions with pictures explain every step. The Maples is shown below in four different room arrangements. The plans are for the 18 x 18 foot size. The Maples can also be furnished in a 22 x 22 foot size or in a 26 x 26 foot size. If purchased in the 22 x 22 foot size each room would be two feet larger each way than shown in the plans on this page. If purchased in the 26 x 26 foot size each room would be four feet larger each way. The hood and stoop are priced separately. This permits you to purchase both of them, either of them, or omit them both if you prefer. Very often the Maples home is sold with one of our small porches included for use on the front. By quoting such items as porches, stoops, etc., separately you can make your home just as you want it and control your building costs. With the Maples home you receive 6" x 6" built-up girders, 2" x 6" floor joists on 16-inch centers for the 18' x 18' sizes and 2" x 8" floor joists on 16-inch centers for the 22' x 22' and 26' x 26' sizes. The rafters are 2" x 4" on 24-inch centers for the 18' x 18' and 22' x 22' sizes. For the 26' x 26' sizes the rafters are 2" x 6" on 24-inch centers. Ceiling height 8 feet. The roof has a one-quarter pitch. Complete detail specifications furnished on request.



A Letter from Massachusetts

Dear Sirs:

I must write you again to say how much I appreciate what you have done for me in hurrying my Aladdin home to me. Just to think in two weeks from the day I sent my order in, it was here. Everything looks so nice—doors are beautiful. And it all came so nicely, not a piece missing. Remember always, whenever I hear anybody talking of building, I shall try to influence them in all ways to send to you.

(Mail address sent upon request).

Mrs. Lillian G. Best.



Camp Crook, S. D.

Gentlemen:

I shall be glad to tell anyone of my experience in dealing with you for my new Maples home. I am more than satisfied with it. The material is much better than I had expected and the building went together nicely. You may refer prospective customers to me at any time.

R. E. Dumont.



THE CONVERTIBLE

Price Given
On Enclosed
Price List

And We Pay
The Freight

The Convertible is a stepping stone to Homeland. It is a house designed for living quarters until a larger one is built, when it can easily be converted into a two-car garage. This is being done by thousands of people who own lots, either all paid for or partly paid for. Two sizes of the Convertible are shown. Either floor plan can be furnished in the 18' x 18' size, or in the 20' x 20' size. With the Convertible home you receive 6" x 6" built-up girders, 2" x 6" floor joists on 16" centers and 2" x 4" rafters on 24" centers. Ceiling height 8 feet. The roof has a one-quarter pitch. Complete detail specifications mailed on request.

Build It Yourself



Gentlemen:

Richfield, Calif.

I wish to tell you that we received our Aladdin home all O.K. and are very proud of it. My husband and a helper put it up in eight days. Since the house went up in such short time and looks so nice, we have had lots of compliments on it. I wish to say also, that we are boosters for the Aladdin homes.

Viola M. Endicott.



PLAN 1

PLAN 2

Materials Readi-Cut—Build It Yourself
Start Now! Save Rent!



The St. Clair is a big favorite and it can be purchased in your choice of two different plan arrangements. It is low in cost although the same high quality of materials are furnished with the St. Clair as for our largest homes. Aladdin's CERTIFIED lumber insures highest quality and sturdy construction. The St. Clair will be found warm and snug in coldest winter. The inset porch is included in the price. With the St. Clair home you receive 6" x 6" built-up girders, 2" x 6" floor joists on 16" centers and 2" x 4" rafters on 24" centers. Ceiling height 8 feet. The roof has a one-quarter pitch. Complete detail specifications mailed on request.

THE ST. CLAIR

Price Given
On Enclosed
Price List

And We
Pay The
Freight

A Big Favorite

Elsmere, Delaware.

Gentlemen:

I will gladly give you permission to refer prospective customers to me. Have my home finished and am very pleased with it. It turned out much better than I expected. Anybody who wants to see it is very welcome to come.

Ludwig Schiefel



PLAN A

PLAN B

THE MARYLAND

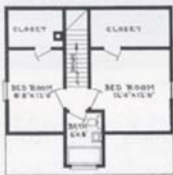
Appreciative students of home plans pronounce The Maryland the biggest low cost home ever designed. To find three bedrooms, in addition to living room, dining room, kitchen and bath within the compass of 24x24 feet is astonishing. Every inch of space in The Maryland is useful. If a larger living room is desired the arch between living room and dining room can be omitted, or moved to form a dinette.

The exterior is splendidly proportioned. This home is furnished with 6"x8" sills, 2"x8" joists, 2"x6" rafters and ceiling height is 8'6" first floor and 8' second floor. Complete detailed specifications mailed on request.

Build It Yourself



PLAN No. 1

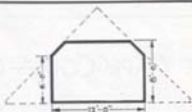


PLAN No. 2



Southburg, Conn.

Dear Sirs:
Ever since I have moved into my new home, I have been perfectly satisfied and everyone that has been to see it certainly admired its size.
Mrs. L. R. Buckingham.



THE COTTONWOOD

Price Given
On Enclosed
Price List

And We Pay
The Freight

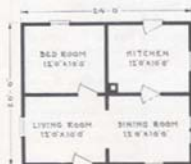
The Cottonwood home is obtainable in two different sizes. The Number 1 plan is 20' x 16' in size and the Number 2 and Number 3 plans are 24' x 20' in size. The room arrangement of plan Number 2 is exactly the same as plan Number 1. If the Number 1 size is desired with two bed rooms, we can provide the home in the same plan arrangement as the Cottonwood No. 3 for \$6.00 additional. The porch is priced separately so it can be



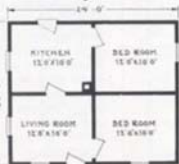
PLAN 1

ordered with the house or left off. With the Cottonwood home you receive 6' x 6' built-up girders, 2' x 6' floor joists on 16 inch centers and 2' x 4' rafters on 24 inch centers. Ceiling height 8 feet. The roof has a one-quarter pitch. Complete detail specifications mailed on request.

The Saving After Building a Small Home Will Add More to Your Happiness Than the Luxuries of a Big House



PLAN 2



PLAN 3

Many questions regarding Aladdin homes will be found answered on pages 2, 3, 4, 5, 6, 7 and 8



THE CAPE COD — Charmingly Dignified — Price Given On Enclosed Price List And We Pay The Freight

Typically New England in conception, design and atmosphere, the Cape Cod matches the finest traditions of old eastern homesteads. Like all the old houses in the land of the Pilgrims, it is free from embellishments, depending for its beauty on extremely well proportioned form and severity of line. Note the true-to-type front entrance, an important feature of all colonial designs. The gabled side porch is meant to give a view of and access to the garden or lawns.

Upon entering the front door one finds archways leading to both living room and dining room. Living room has three exposures with an unusual amount of wall space. Fireplace is designed to be recessed, saving space. The dinette can be utilized as library, den or children's play room. Dining room, kitchen and toilet complete the first floor. Masters bedroom with alcove dressing room and two good closets occupy one side of second floor while the plan is completed by two additional bedrooms, bath and closets.

The Cape Cod has 6" x 8" built-up sills, 2" x 10" joists, 2" x 6" rafters and ceiling height is 8'6" and 8'0".

Complete detail specifications mailed on request.



SECOND FLOOR PLAN



FIRST FLOOR PLAN

ALADDIN SUPER WALL BOARD

Aladdin Super Wall Board makes an ideal inner wall in place of lath and plaster, for all rooms, walls and ceilings. It comes to you in a natural light cream surface entirely suitable without decoration for attractive appearance. Either cold water paint or ordinary paint can be used if you desire to decorate. It is a full half inch thick, strong, tough, fire-resistant and verminproof. Its insulating value, against heat and cold, is superior to lath and plaster as reported by the United States Bureau of Standards.

An Ultra Modern Aladdin Bed Room



The Bed Room

Proper ventilation and wall spacing are features that stand out by themselves in Aladdin bed rooms. Thoughtful planning in the selection of furniture and curtains and care in the arrangement of furniture makes possible such beautiful results as shown in this picture of an Aladdin bed room.



Conveniently Planned Kitchens



The Kitchen

From the housewife's standpoint the kitchen is the most important room in the modern home. By correct arrangement and planning the burden of kitchen work is greatly reduced in Aladdin kitchens. In all plans, excellent light and ventilation are provided.



Beauty, Comfort and Convenience By Aladdin

Real Aladdin Living Room Comfort

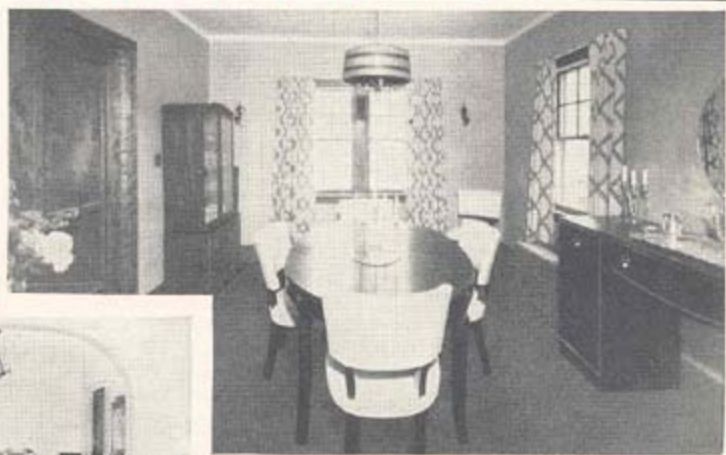


The Living Room

Aladdin interiors are planned by experts who appreciate the priceless value of a happy, contented home life. The living room is the very center of the home—a gathering place where idle hours become golden hours of rest and relaxation. You, too, will enjoy the comforts and luxury of an Aladdin living room.



Large Cheerful Dining Rooms



The Dining Room

Simplicity and good taste are outstanding features of Aladdin dining rooms. Correct proportions and correct wall spacing with the proper arrangement of doors and windows set a definite standard equaled only in the more expensive homes.



Expert Planning Makes Convenient Interiors

PRICES ON ADDITIONAL MATERIALS AND EQUIPMENT

Aladdin Houses are sold in all parts of the United States and in Foreign Countries. Your local weather conditions and personal requirements will largely determine whether you will wish to purchase with your home any materials in addition to those listed. We are prepared to furnish additional materials and equipment as described and priced below, for any home.

Porches—Whenever possible Aladdin porches are quoted separately to permit buying the house without the porch or to enable you selecting a different porch from that shown on the house. The front steps are included in the price of the porch.

Cellar Windows—For wall opening 3 ft. wide by 2 ft. high, complete with frame, glazed sash and hardware \$2.00 each. It is unnecessary to ship frames before the house, for by leaving openings 3'x2', the frames can be set in the foundation later.



INTERIOR DOOR

Closet Doors—The numerous requests we have received for the omission of closet doors have induced us not to include them in our specifications but the door frame, or cased opening is provided. These openings can be artistically draped adding color and attractiveness to the interior of the home and at the same time an economy is effected. If you wish closet doors you can purchase them separately at \$4.80 each, including hardware. An illustration of the style of inside doors furnished with all Aladdin houses is shown on this page.

Special Doors—The outside front door furnished with many of our houses is a standard sash door with one light of glass about 24 inches square in the top. If the Aladdin home you select is provided with this design of door, it will show in the illustration of the house. With such houses, if you wish our No. 14 French Door or our No. 9 or No. 10 front doors substituted, the change can be made for \$2.00 additional. The style of these special doors is shown above. French doors can also be furnished in pairs for the inside arch openings for \$14.00 per pair. This includes not only the pair of doors but the astragal between the doors, lock set, two pairs of hinges, top and bottom bolts and stain and varnish.

Sub-Flooring and Wall Sheathing—These materials together with building paper, are included in double construction price. Sub-flooring consists of inch boards cut to proper lengths to be used under the finish flooring. Building paper is included for use between the two layers of flooring. Likewise, wall sheathing is inch material cut to proper lengths for use under the siding. Building paper is included for use between the sheathing and siding. The building paper consists of two sheets of strong paper, cemented together with a layer of pure asphalt. Dampness cannot penetrate this paper. It is wind-proof, vermin-proof and durable. The nails for sub-flooring and wall sheathing are included in our price on these materials.



EXTRA ROOM ADDITION

Extra Room Addition—The addition shown at the left can be used for a bathroom; pantry, bedroom or any other purpose desired. It is 8' x 10' in size and is furnished complete with one outside door and one window. Price of addition \$77.00.

Wood Lath—Wood lath is quoted separately on the price list for each house. Our price on lath includes the lath nails and plaster-grounds. Plaster grounds are square strips, the thickness of lath and plaster to be used around all inside openings and also to back-up the base molding. They form a guide for thickness of plaster and are necessary for a smooth, satisfactory job. If you wish to line the interior of your house with wall board, note cost in price list for each house.

Extra Windows—If extra windows are desired or if you wish us to replace single windows with double windows, write for prices.

Shutters or Blinds—Furnished for windows when shown in illustration of house. Extra shutters can be furnished for any home for \$3.50 per pair, including the necessary hardware.

Screens and Storm Sash—Screens and storm sash can be furnished for outside door and window openings. Write for prices mentioning house selected and stating what windows and doors are to be equipped.

Kitchen Cabinets—Aladdin kitchen cabinets are manufactured of clear stock, every piece fitted ready to assemble. Paneled doors open to shelves above, while below, a drawer is arranged over deep cupboard space, also equipped with doors. A sliding breadboard is over drawer. All hardware nickel plated. Cabinets are furnished in the natural wood to permit finishing the same as other kitchen woodwork. Cabinets are 7 feet 9½ inches high, upper section 12 in. deep, lower section 23 in. deep. Cabinets can be furnished 2 ft. 6 in. wide for \$12.50 each or 3 ft. 6 in. wide for \$14.75 each.



KITCHEN CABINET

Oak Flooring—Oak flooring can be furnished for any or all rooms of any Aladdin home providing sub-flooring is being used. If wanted write for prices. State in just what house and in what rooms you will wish to use it.

Asphalt Shingles and Asphalt Roofing—Green slate surfaced asphalt strip shingles are furnished with some Aladdin homes. They are hexagonal butt and self spacing. When roll roofing is included, see separate quotation for shingles in price list attached. Shingle prices do not include shingles for porch roofs. Due to the lesser slope of porch roofs, roofing is usually recommended.

Wall Shingles—Red Cedar shingles can be furnished for side walls at no extra cost providing wall sheathing is used.

Foundation Posts—We can furnish with your house shipment, wooden foundation posts 8 feet long at 80 cents each, or posts 4 feet long at 40 cents each.

Curved Plastered Arches—Square, cased openings are usually furnished between the living-room and dining-room. Curved plastered arches can be substituted on request, at no difference in price.

Cellar Stairway Addition—The addition shown at the right is 7'x6' in size. If the Aladdin home you select is not provided with a cellar stairway this addition can be used if a basement is desired. It can be added to the rear of any Aladdin home and includes steps to the kitchen and basement with grade entrance. Price of addition \$61.00.

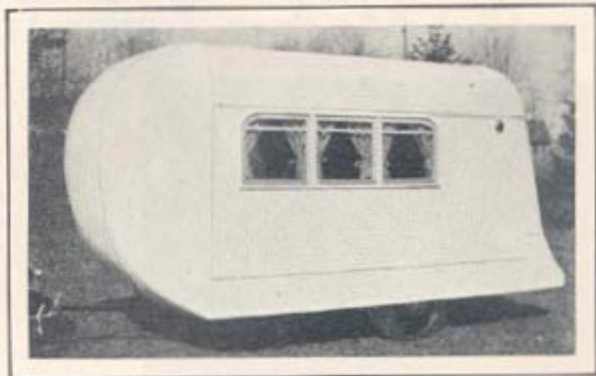


CELLAR STAIRS ADDITION

Announcing ALADDIN TRAILER HOMES

NEWEST STREAMLINED MODEL

An Aristocrat
Of Trailers



Here Is A Complete Home On Wheels

THE amazing development of house type trailers during the past two years is the natural evolution of the modern trend toward living on wheels, inspired by the automobile. The low cost of travel by automobile, as compared to other forms of transportation, has given limitless opportunities to millions of families. The circle of their travels has enlarged to the borders of the continent. The forests and streams of the north, the historic trails of the Atlantic seaboard, the tropics of Florida, and the mountains of the Pacific slope, are theirs to enjoy at a cost of a week's run over fine pavements and a few dollars for gas and oil.

And now with the coming of this newest adjunct of the automobile, "everywhere is home in an Aladdin Trailer."

The Continent is Your Playground

Fifty thousand miles of smooth pavement lead from your own door to continental Everywhere—from the Canadian provinces to Mexico City; from the Atlantic to the Pacific.

With an Aladdin Trailer Home you are the master of time, distance, place AND expense.

You have no tickets to buy, no time table to consult, no expensive hotel room and meals to endure. Your own inclination directs your every movement. During vacation, adventure beckons from a thousand distant points, while every week-end throughout the year offers fascinating travel possibilities.

Aladdin offers you a home on wheels, a summer cottage that nests beside a different lake or stream each week, the luxury of a private Pullman always at your command.

New Design—Comfort—Strength—Value

Aladdin presents an entirely new design and finish in the trailer field. Streamlining is dominating all modern industrial design, but nowhere more effectively and efficiently than in transportation fields—automobiles, trains,

airplanes, and even ocean liners. Reducing air or wind resistance in a moving vehicle reduces fuel costs, increases speed and lessens vibration.

If you will examine the exterior views of Aladdin Trailer Homes you will discover what is said to be the most perfect scientifically designed streamlining to be found on any modern vehicle. The nose, or front is the shape of a falling raindrop, offering the least known resistance to air movement. The sides are flush, smooth, with no projections to disturb the free flow of air. The compound curves and sloping back eliminate vacuum forming back-wash of air, which retards speed and wastes power and fuel.



Hauled anywhere by lightest of modern cars

See following pages

Creating a New Sensation in Modern Trailer Travel



Two Berth Model Dining Table Seats Seven



Twin Beds Made Up In Two Berth Model



Beautiful Cabinet Work—Kitchen Concealed

A Living Room on Wheels

More original in execution than the exterior are the revolutionary changes you will discover inside.

The Aladdin Trailer Home interior is as far advanced over conventional trailer design as the latest streamlined train is over the old horse car. We are not accustomed to live in a kitchen, yet most trailers are really traveling kitchens first, a too obvious bedroom next, and last and apparently least important—a living room.

Aladdin designers have reversed this inefficient, inconvenient and inartistic arrangement. The Aladdin Trailer is a traveling living room first. A beautiful, comfortable and artistic daytime davenport graces one end of the room, flanked by two upholstered wing seats. Six people can be accommodated on this built-in furniture, while the seventh has a comfortable modern chair available. The entire interior is decorated in beautiful enamel.

No crowding is evident with seven people seated—or seated and standing. The main reason is that no projecting cupboards or other impediments extend from the smooth walls at sides or rear.

A Dining Room on Wheels

With the setting up of the large rigid folding table—an instant's work—dining facilities are complete. Seven people can be seated at once without taking any floor space away from the cabinet section, giving the utmost in room and step saving convenience.

A Kitchen on Wheels

The forward end of the interior accommodates a complete kitchen unit—wholly concealed. The cabinet work is designed to harmonize with the smooth walls, yet with the removal of two covering panels the stove and sink are revealed, ready for the preparation of meals.

A Bed Room on Wheels

When retiring for the night, twin beds can be made up in three minutes, and there is left ample floor space between the beds and forward of the beds for dressing. Carefully made curtains drawn at the windows give complete privacy, while allowing adequate air circulation in conjunction with two roof ventilators.

See Prices on Enclosed Price Sheet

Product of Thirty Years Experience The Greatest Trailer Value Ever Offered

Distinctive Features

Fully streamlined . . . Lightest tractive resistance
 No vibration or road sway . . . Scientific
 distribution of weight . . . Shock-proof patented
 hitch . . . No speed limitation . . . Completely
 sealed no-draft body . . . Maximum open floor
 area . . . Maximum ventilation . . . Oversize
 wardrobe locker . . . Adequate lockers for bedding
 and linens . . . Dust-proof drawers for lingerie,
 personal linens and laundered clothes . . . Hat
 locker . . . Plate glass mirror . . . Super size scientific
 fully insulated refrigerator . . . Large ice capacity
 Vegetable locker . . . Canned goods locker
 Cabinet for table china . . . Receptacle for
 table silver . . . Cabinet for pots and pans
 Receptacle for kitchen utensils . . . Coleman
 stove, out of sight when not in use . . . Metal heating
 radiator for stove (collapsible) . . . Stainless
 aluminum sink (out of sight when not in use)
 Nickel plated water faucet over sink . . . Air
 pressure water tank filled from exterior, 18 gallon capacity
 Portable shower bath attachment
 Collapsible dinette table for seven . . . Deep coil spring
 "Velvet Rest" mattresses . . . Daytime davenport
 with cushioned back . . . Two wing seat cushions . . .
 Curtains for windows and door . . . Three 6-volt
 lighting fixtures . . . One 110-volt lighting fixture
 Wired for radio . . . Lignite floor covering . . .
 Copper wire screens . . . Violet ray window glass
 Windows slide down into walls and have non-
 rattling attachment . . . Interior lined—1 1/2-inch
 air space . . . Aluminum insulation on side walls and
 roof . . . Portable step . . . Long life enamel finish.
 Increased sleeping accommodations are obtainable
 for four persons at \$30 extra. Longitudinal seat
 berths of the Pullman type are provided, are easily
 handled and quickly changed from day to night use.



Six People Seated in Four Berth Model

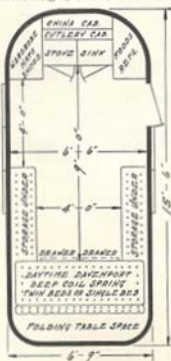


Four Berths Made Up. Note Spacious Floor Space

Specifications—Aladdin Trailer Homes

Length, 15 feet, 6 inches . . . Width overall, 6 feet, 6 inches
 Width inside, 6 feet, 6 inches . . . Overall height, 7 feet, 11 inches . . .
 Inside height, 6 feet, 1 inch . . . Height of hitch, 15 inches . . . Height of floor frame, 17 inches . . .
 Drop axle (heavy duty) . . . Demountable wheels, Chevrolet type . . . Springs, two 12-leaf; two shock absorbing levers . . .
 Axle clearance, 9 inches . . . Tires, High Speed Balloon, 5.50-17 . . . Tread, 62 inches . . . Rear light and stop light; cat's eye reflector; side running light . . . Metal side guard rail . . . Metal rear bumper . . . Chromium door lock with Yale lock in handle . . . Weight, 1,775 pounds . . . Weight on hitch, 250 pounds . . .

Because of our special design, the Aladdin Trailer Home equals any 18-foot trailer on the market . . . Close coupling—the only trailer that couples on a direct perpendicular line with the back of your car, making car and trailer one continuous unit. Specifications subject to change.



Cabinets Opened—A Complete Modern Kitchen

ALADDIN BUILDING ESTIMATES

EXPLANATION OF FIGURES—The labor figures given below have been carefully compiled from data obtained from actual work under widely varying conditions, covering a period of thirty years. They are therefore, average figures, for average work, by average workmen, under average conditions. The price of labor and the cost of masonry materials are not the same in all localities. We are giving you figures from which the cost of construction can be determined fairly accurately by applying your own local prices for labor and masonry materials.

EXCAVATION—Under the heading, "3' Excavation," we give the number of cubic yards of earth necessary to remove in an excavation of that depth. One-third of that amount will be the number of cubic yards in one foot of excavation. If your excavation will be less than three feet or more than three feet you can multiply the number of cubic yards for one foot of excavation by the depth you intend excavating and the resulting figure will give you the number of cubic yards to remove in your particular case. Our figures are based on making the excavation one foot larger each way than the size of the foundation.

FOUNDATIONS—Under the heading, "16' Blocks," we give you the number of concrete blocks of that size necessary for a foundation wall 10 Blocks high. As concrete blocks are 8 inches high, a 10 block wall is approximately 7 feet high. If a wall of

different height is built, divide the quantities by ten and multiply by the number of blocks high your wall is to be built. If a cellar is not being built under your home, a seven foot wall will not be required. It will only be necessary to carry your foundation down below the frost line. This is seldom more than 2 to 3 feet below ground or grade line and in many localities is considerably less. Should you use 21' blocks the quantity of blocks required will be one-third less.

PLASTERING SURFACE—Under this heading we give you the number of square yards of surface in the home to be lathed and plastered, and with all openings included.

CHIMNEYS—Chimneys and fireplaces are sometimes shown on our plans to suggest a practical location. Since we do not cut the openings in our homes for them, you can change the location or omit them entirely if preferred. The amount of material required for chimneys is as follows:

- One 8' x 8' flue chimney, 30 bricks to each foot of height.
- Two 8' x 8' flue chimney, 50 bricks to each foot of height.
- One 8' x 12' flue chimney, 35 bricks to each foot of height.
- Two 8' x 12' flue chimney, 60 bricks to each foot of height.

For mortar allow $\frac{1}{2}$ bbl. cement and $\frac{1}{2}$ cu. yd. sand for each 1000 bricks.

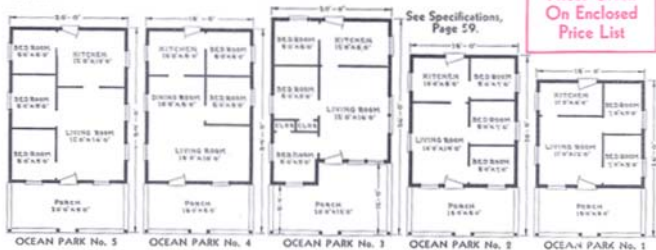
NAME OF HOME	Cu. Yds. Excavation 3' Deep	16' Blocks 10 Blocks High	Carpenter Labor Single Construction		Carpenter Labor Double Construction		Painting Exterior and Interior		Sq. Yds. Plastering Surface
			Men	Days	Men	Days	Men	Days	
Avalon	127	1080	3	23	3	25½	2	12½	872
Belhaven	75	750	12	75	11	14	8½	310	310
Beverly	101	900	10	25	10	25	9	367	367
Birchwood	90	840	12	14	11	14	8	364	364
Brewster No. 1	109	975	15	15	16	11	9	477	477
Brewster No. 2	105	900	14	15	15	11	9½	438	438
Brookline No. 1	120	1146	12	16	18	11½	11½	506	506
Brookline No. 2	128	1296	13½	17½	19½	12	12	565	565
Cambridge	105	1083	16	16	16	8	8	328	328
Canterbury No. 1	126	1203	21½	21	21	9½	9	359	359
Canterbury No. 2	123	1267	22	22	24½	9	9	345	345
Cap Cod	118	900	19	21½	21½	9½	9½	370	370
Capitol	118	900	20	22	22½	10	10	393	393
Cedarwood	125	1200	17	10½	17	7½	7½	300	300
Charleston	153	990	20	20	22½	9	9	326	326
Convertible 18'x18'	41	540	6	6	7	5	5	156	156
Convertible 20'x20'	49	600	6	8	8	6	6	179	179
Cottonwood 18'x16'	41	540	6	6	7	5	5	166	166
Cottonwood 21'x20'	57	660	8	8	9½	6	6	209	209
Cypress	57	660	8	8	9	6½	6½	243	243
Elmwood	80	780	11½	11	13	8	8	283	283
Fairfield No. 1	112	1020	19	21	21	7	7	260	260
Fairfield No. 2	120	1050	20	20	22	8	8	314	314
Ferris No. 1	125	1050	14	16	16	9½	9½	367	367
Ferris No. 2	135	1080	15	17	17	11	11	345	345
Firwood	63	690	8	8	9½	6½	6½	219	219
Gables No. 1	95	870	11	12	12	8	8	275	275
Gables No. 2	100	900	12	14	14	9	9	328	328
Hamilton	106	1020	20	22	22	7½	7½	277	277
Hawthorne	111	900	14	16	16	9	9	315	315
Larchwood	92	810	12	14	14	8	8	269	269
Larchwood "D"	92	810	13½	13½	13½	9	9	337	337
Larchwood "E"	97	870	13	15	15	10	10	323	323
Madison "A"	98	915	12	14	14	8	8	261	261
Madison "C"	115	1005	15	16½	16½	11	11	339	339
Madison "D"	118	1050	16	17½	17½	12	12	359	359
Magnolia	65	720	15	16	17	9½	9½	326	326
Maples 18'x18'	41	540	6	6	7	5	5	156	156
Maples 22'x22'	59	660	8	8	9½	6	6	209	209
Maples 26'x26'	81	780	11	12	12½	7	7	249	249
Marshfield "A"	89	750	14	15½	15½	10	10	308	308
Marshfield "B"	110	900	16	17½	17½	11	11	396	396
Maryland	70	780	16	17½	17½	11	11	360	360
Nantucket No. 1	117	930	16½	16½	18	12	12	447	447
Nantucket No. 2	138	1330	20	22	22	12	12	465	465
Oakwood "A"	69	780	12	12½	12½	8	8	259	259
Oakwood "B"	62	690	11	9½	9½	7	7	235	235
Oakwood "C"	75	750	12	13½	13½	8	8	260	260
Oakwood "D"	75	780	13½	14	14	9	9	317	317
Pershing No. 1, No. 2	80	851	11½	11	11	8	8	269	269
Pershing No. 3, No. 4	90	870	12	14	14	9	9	281	281
Plymouth No. 1	69	780	12	12½	12½	8½	8½	247	247
Plymouth No. 2	81	780	23½	23	23	7	7	269	269
Poplar	111	900	12	14	14	9	9	323	323
Redwood	54	630	7½	9	9	6½	6½	238	238
St. Clair	52	640	9	9½	9½	7	7	238	238
Stratford No. 1	101	900	16	16	18	8½	8½	307	307
Stratford No. 2	112	960	19	21	21	10	10	372	372
University	132	1110	21	21	24	8	8	312	312
Virginia	101	900	13	15	15	9	9	305	305
Whitcomb	57	690	8	9½	9½	6½	6½	239	239

THE OCEAN PARK

is an unique design and something out of the ordinary in summer cottage architecture. Some fine features are incorporated in the five Ocean Park plan arrangements that will attract folks desiring the utmost comfort in a summer home. The main roof extends over the porch in each design, giving greater ventilation area inside and a place for storage as the porch is ceiled overhead. Plan No. 1 is a two bedroom arrangement, and is priced astonishingly low. Plan No. 2 is the same width but contains three bedrooms and rooms of larger proportions. The Plan No. 3 arrangement contains the inset porch and also two closets. Plans No. 4 and No. 5 are conveniently arranged, one having a large living room and dining room, the other having three bedrooms. The sills are 4" x 6" built-up. The floor joists are 2" x 6" on 24-inch centers. The rafters are 2" x 4" on 24-inch centers. The interior partitions are 7'6" high. The roof is one-quarter pitch with exposed eaves. See specifications Page 59.

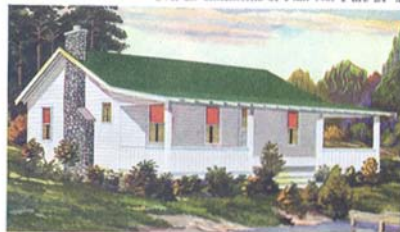


Prices Given On Enclosed Price List



THE SHASTA

Three sizes and plans are shown for the Shasta, one of our most popular summer cottages. Over-all dimensions of Plan No. 1 are 24' x 24', porch, living room, three bedrooms and kitchen make up a very complete cottage. Plan No. 2 is 28' x 26' over-all. Note the porch size 28' x 8'. The interior affords a fine living room, three bedrooms and kitchen. Plan No. 3 is size 36' x 30' over-all. A splendid summer cottage of the larger type. The sills are 4" x 6" built-up. The floor joists furnished for the Shasta No. 1 and No. 2 are 2" x 6" on 24-inch centers and for the Shasta No. 3 are 2" x 8" on 24-inch centers. The rafters are 2" x 4" on 24-inch centers. The height of the interior partitions is 8'. See specifications Page 59.



Prices Given On Enclosed Price List

See Specifications, Page 59.





THE BAR HARBOR—An Ultra Modern Type—

Price Given
On Enclosed
Price List

And We Pay
The Freight

Extremely modern, but not "modernistic," the Bar Harbor presents the latest thought in summer home design. Its beauty evolves from its simplicity of form and line, yet it is as rugged as the Maine coast from where it draws its name.

Horizontal lines of the siding are accentuated by similar lines in the windows and door. The sturdy roof is in perfect harmony with this type. Two sizes are presented from which to choose. Room sizes in both plans are identical. And in both, the outstanding feature—the newest idea in summer homes, is the joining of living room and porch into one single unit.

The projecting part of the living room is entirely enclosed with full casement windows. It opens up perfectly as a porch, yet can be partially or fully enclosed in inclement weather. By this arrangement the livable spaciousness of the living room is almost doubled.

Plan No. 2 offers two bedrooms while Plan No. 1 has optional four bedrooms or three bedrooms and dining room. Should you choose Plan No. 1 and desire the rear porch and dressing room we will be glad to quote price for this latter feature.

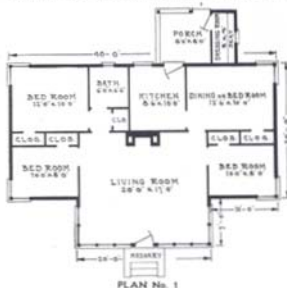
The Bar Harbor is furnished with 6" x 6" built-up sills, 2" x 8" floor joists on 24-inch centers and 2" x 4" rafters on 24-inch center. See specifications for summer cottages on Page 59.

Cicero, Ind.

Gentlemen:

Our house is not quite finished but we are getting along fine. Neighbors remark about the fine quality of material and can't see how I can get through with so little cost. They think a house like that would cost \$3000 or \$3500 and are surprised when I tell them I will get through and finish it for \$2500.

D. B. Zimmerman



Modern, efficient
manufacturing
methods, Read-
Cut construction
and CASH Selling
result in lowest
possible prices.



The Willows

This Seven Room Cottage

Price Given
On Enclosed
Price List

FREIGHT PAID

A striking feature of the Willows is the attractive balcony across the center of the interior reached by open stairway from the first floor. This gives an atmosphere of light and spaciousness to the living room and creates the feeling of a domed room. The living room is 24 feet across the front, has three exposures and is 12 feet deep. Four bedrooms are included, one on the first floor and three on the second. Kitchen and toilet complete the room plan. The porch is a veritable outdoor living room, being 24 feet by 8 feet, with solid railing.

A big dormer window in the front roof gives added light and circulation.

The Willows has been a very popular design with our customers.

Sills are 6"x8" built-up, joists are 2"x8" first floor and 2"x6" second floor, on 24" centers. The rafters are 2"x6" and 2"x4". First floor partitions are 7'6".

Prices Given On Enclosed Price List

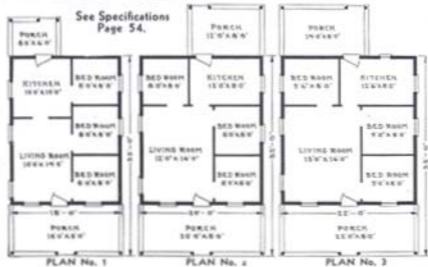


The Bay View

This beautiful little cottage will fit in any summer resort colony as it is attractive and well designed. It is offered in three different plan arrangements and sizes, each having a large porch across the front and a very convenient porch at the rear. These porches are included in the price quoted for the cottage. The materials are cut to fit thus making it possible for you to build it yourself without the slightest difficulty as thousands of other happy Aladdin home and summer cottage owners have done.

Only the best of materials are furnished with Aladdin summer cottages as you will note by referring to the specifications on Page 52. The sills, three in all, are built-up, size 4" x 6". The floor joists are 2" x 6" on 24-inch centers. Wall studding 2" x 4" on 24-inch centers. The rafters are 2" x 4" on 24-inch centers. The height of interior partitions is 7'6".

Prices Given
On Enclosed
Price List



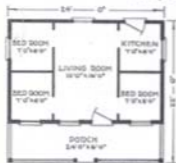
THE GENESEE

The Genesee is a strikingly good looking summer cottage and it is shown in three well planned arrangements. The Genesee No. 1 is 24' x 22' over-all and contains a generous porch, living room, three bedrooms and kitchen. You will note that there is plenty of light and air in this cottage. It has a straight gable roof with one-quarter pitch, and exposed eave projections. The full width of the cottage is utilized for a front porch. The Genesee No. 2 offers a unique arrangement of rooms having living room and two bedrooms facing the front of the house. Kitchen and front and rear porches complete the plan. The Genesee No. 4 will attract you because of the wide expanse of living room across the front of the cottage. Some builders omit the partition between the living room and dining room and then use the end of this enlarged room for dining purposes. By making this change you have a living room 30' long which of course is very desirable in a summer cottage. Three bedrooms and kitchen complete this plan arrangement. The sills are 4' x 6' built-up. The joists are 2' x 6' on 24-inch centers. The rafters are 2' x 4' on 24-inch centers. The height of the interior partitions is 7'6". See specifications Page 59.



Prices Given
On Enclosed
Price List

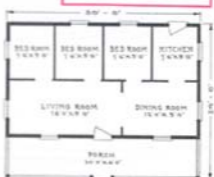
See Specifications, Page 59



GENESEE No. 1



GENESEE No. 2



GENESEE No. 4



THE SHOREVIEW Is furnished in four popular sizes. Any one of them can be built on a very narrow lot. The Shoreview No. 1 is a snug little layout of four rooms and porch. It is conveniently arranged and good looking, too. The other arrangements are very well planned and give you the most in comfort and convenience. The sills are 4' x 6' built-up. The floor joists are 2' x 6' on 24-inch centers and the roof has an exposed eave. The height of the interior partitions is 7'6". See specifications Page 59.

Easy to Buy—Easy to Build
It's Readi Cut

See
Specifications,
Page 59.

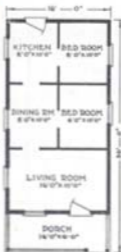
Prices Given
On Enclosed
Price List



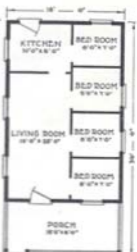
SHOREVIEW No. 1



SHOREVIEW No. 4



SHOREVIEW No. 2



SHOREVIEW No. 3

THE SEAFORD

Among the large types of summer homes, the Seaford stands out for the many unusual qualities it possesses. The Seaford Plan No. 1 has three bedrooms, living room, kitchen, and a large porch, 22' x 8', completes this fine type of summer cottage. The Seaford No. 2 is a decidedly popular plan, a three bedroom design with a very convenient porch arranged at the side of the kitchen. The Seaford No. 3 has an exceptionally large porch, ten feet deep, and six rooms. Remember, we can rearrange the partitions in any summer cottage to meet your needs. The Seaford No. 4 is now arranged with two bedrooms but if you prefer an extra bedroom the present dining room can be used as a bedroom, giving you three bedrooms in this plan arrangement, or by omitting the partition between the living room and dining room, a living room across the entire front of the cottage can be had. The Seaford No. 5 is a four bedroom plan and will accommodate eight people with permanent sleeping quarters. The Seaford Cottage has 4" x 6" built-up sills. The joists are 2" x 6" on 24-inch centers. The rafters are 2" x 4" on 24-inch centers. Roof one-quarter pitch. The height of the interior partitions is 7'6".



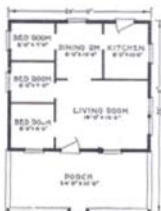
SEAFORD No. 1



SEAFORD No. 4



SEAFORD No. 2



SEAFORD No. 3



SEAFORD No. 5

See Specifications Page 59

Prices Given
On Enclosed
Price List



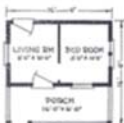
Any Aladdin Summer Cottage can be erected by you without previous experience. The materials are cut to fit in our mills ready for nailing in place, and you will be assisted by complete detailed blueprints and pictures.

Prices Given
On Enclosed
Price List

THE ASBURY

is a cozy summer cottage of pleasing lines. The porch can be screened-in to give an outdoor living room. The Asbury No. 1 is the smallest Aladdin Cottage. It has a living room and bedroom and it's just as well built as our larger cottages. The Asbury No. 2 is 4' deeper and has three rooms. It's a cute little cottage for the modest demand. Plan No. 3 size over all, 16' x 22'. The Asbury has 4" x 6" built-up sills, the joists are 2" x 6" on 24-inch centers. The rafters are 2" x 4" on 24-inch centers. The height of interior partitions is 7'6". The roof has a one-quarter pitch.

See Specifications Page 59



ASBURY No. 1



ASBURY No. 2



ASBURY No. 3

THE LONG BEACH . . .

Big, light and airy living rooms are desirable features of the three plans shown for The Long Beach. Each has, in addition, three bedrooms, toilet and kitchen.

Plan No. 3 is arranged so that upper and lower built-in berths can be installed giving a larger owner's bedroom.

This summer cottage is both sturdy and handsome and will give long satisfaction to its owner.

The sills are 4" x 6" built-up, floor joists are 2" x 6", wall studding 2" x 4" and height of partitions 7'6". See specifications for summer cottages on page 59.

Screens and other equipment are described on page 61 while prices will be found on enclosed price list.



LAKE LOUISE

A woody atmosphere pervades this interesting cottage. An increasing demand for the log cabin type has caused us to present the Lake Louise this year for the first time.

The outside walls are built of special thick siding machined to give a true log effect, corners mitered and with log type porch columns.

The front porch can of course be screened, it being eight feet wide. We will quote a price on this type of siding for any of our summer cottages.

Two optional floor plans are shown and priced, each with three bedrooms.

Sills are built-up, size 4" x 6", joists are 2" x 6", rafters are 2" x 4", wall studding 2" x 4" and height of partitions is 7'6".



Troy, Ohio

Gentlemen:

The building material for the house has arrived and everything is just as advertised. Am very proud of it. Should I want to build again in the years to come it surely will be an Aladdin for I will always think of you first. I will send a list of names as soon as I can get to see them as there are several friends who want to see my house or material before they decide to build.

Walter H. Stoner

ALADDIN

Redi Cut

Summer Cottages

Easy to Order--Easy to Build



The call of the wild—the urge of the great outdoors—can be answered with enthusiasm when one has an Aladdin Summer Cottage to go to.

Only high grade materials are furnished for Aladdin Summer Cottages. Clear and knotless bevel drop siding, knotless flooring, knotless partition material, knotless outside finish, etc., distinguish Aladdin Summer Cottages from the ordinary kind.

For instance, notice the style and thickness of our clear and knotless bevel drop siding as shown by full size drawing. This is unusual material, unusual high quality—and still our prices are low!

Immediately on receipt of your order we mail you a complete set of drawings, showing where every piece of material goes. You also receive a book of instructions and illustrations showing and explaining in a simple manner just how to build your cottage. Even if you are not experienced in carpenter work, **You Can Build Your Own Aladdin Cottage.**

Our price includes not only the materials but a large proportion of the labor—every piece of lumber in Aladdin Cottages is cut in our mills to its exact length, breadth and thickness—ready to nail in place on arrival.

All material for the erection and completion of your Aladdin Cottage will be on the ground at one time. Nothing forgotten nor overlooked. Summer cottages are usually built at places some distance from supply dealers. Trips back and forth are expensive. Your Aladdin Cottage arrives at destination complete—all lumber ready to nail in place—all windows, glass doors, roofing, locks, nails, hinges, paint—in fact, everything.

In accordance with customary Summer Cottage Construction, the rooms are open to the rafters, and the studs on the inside of the outside walls are left exposed, showing the smooth interior surface of the Knotless Siding.

Any Aladdin Cottage can be shipped and delivered to you in about one week after receipt of your order. In another week your cottage can be ready to live in.

When erected, the cottage is identical to one built by a contractor except that the material and type of construction is far better than the average.

Specifications for Summer Cottages
—The Aladdin Company guarantees to furnish a sufficient quantity of materials to complete your summer cottage in accordance with the specifications listed below and further described in the reading matter concerning each cottage.

Quality of Materials—All lumber is guaranteed to be of high quality. Only Aladdin Certified Materials are furnished.

Girders or Sills—Built-up of 2" material to size specified on page showing cottage.

Floor Joists—Spaced on 24-inch centers, dressed and cut to fit. Size of joists specified on page showing cottage.

Studding—For walls, 2" x 4" placed on 24-inch centers, selected for quality and cut to exact length ready to be nailed in place. All walls have top and bottom plates which is the approved type of construction.

Wall Ties—Selected for quality, dressed and cut to exact length, ends mitered ready to nail in place.

Rafters—Placed on 24-inch centers and perfectly mitered and cut to fit. Size of rafters specified on page showing cottage.

Flooring—The flooring used in Aladdin Summer Cottages is Clear and knotless, tongued and grooved, accurately matched and machined to give a beautiful finish.

It is what is known as "inch" flooring but when machined down is actually $\frac{3}{8}$ of an inch in thickness. Cut in exact length ready to nail in place.

Siding—Clear and knotless bevel drop siding manufactured so it will have a perfectly smooth interior surface against the studs. All siding cut to exact length.

Partitions—Clear and knotless double-faced beaded ceiling held at top by grooved partition cap and secured to floor by quarter-round molding on each side. All openings cased to standard size so doors can be used if desired.

Roof Sheathing—Inch lumber to be laid tight. All sheathing dressed, cut to exact length and ready to nail in place.

Roll Roofing—Made of heavy weight felt base, saturated with asphalt and surfaced with natural green slate firmly imbedded in the heavy water-proof base.

Outside Finish—Such as corner boards, window and door frames, moldings, etc., manufactured of clear and knotless stock.

Window Sash—Manufactured of knotless stock. Glass in sash ready to hang. Windows check rail type, size of glass in each sash, 26 x 24 inches, with a few exceptions where a smaller window is required to carry out the proper effect.

Outside Doors—Clear and knotless, mortised for lock sets, glass placed in them, ready to hang.

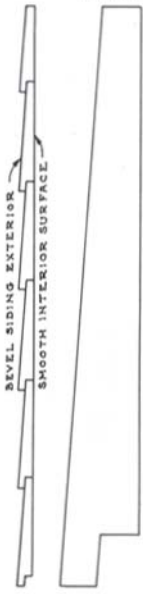
Porches—The price quoted for each cottage includes the porch. Screens quoted separately in Price List.

Paints—Furnished for exterior only. We have used unusual care in the manufacture of our paints for the appearance of your cottage depends to a great extent upon the quality of the paint.

Hardware—Frosted brass finish lock sets, $3\frac{1}{2}$ " butts for doors, spring window bolts for all check rail windows, casement locks and hinges for swinging windows, nails of all sizes in proper amounts to complete the cottage.

Blue Prints—Drawings and a book of instructions showing every step of erection are furnished so that even though you may not be a carpenter, you will know just how to erect your cottage.

Reversing Plans—Plans can be reversed without charge. This will place all rooms on opposite side of house from that shown.



FULL SIZE DETAIL OF THE CLEAR AND KNOTLESS BEVEL DROP SIDING FURNISHED

THE LUNA

From the standpoint of good architecture, splendid room arrangement and comfortable accommodations, the Luna is a summer home of superior qualities, yet it can be erected at a low cost. It is large enough for the average family. The space over the front porch can be used for storage as the porch is ceiled overhead. This storage space is very desirable in a summer cottage. Plan No. 1 has three bedrooms, big living room and kitchen. Two men have built and finished the Luna No. 1 in five days. The porch is size 22' x 8'. Plan No. 2 provides a splendid size living room, a kitchen and three good bedrooms. The dimensions of the Luna No. 2 will permit this cottage to be built on a narrow lot. The Luna No. 3 contains three bedrooms, living room, kitchen and large porch. The Luna No. 6 is a big, roomy cottage with four bedrooms, living room and kitchen. The big living room and porch permit the entertaining of many friends at one time. The Luna has 4' x 6' built-up sills. The Luna No. 1, No. 2 and No. 3 have 2' x 6' floor joists on 24-inch centers. The Luna No. 6 has 2' x 8' floor joists on 24-inch centers. The rafters are 2' x 4' on 24-inch centers, the eaves are the exposed type. The height of the interior partitions is 7'6". See specifications Page 59.



Prices Given
On Enclosed
Price List

Spend the first few days of your vacation building your own Aladdin Summer Cottage. It's Fun, Easy and economical. Readicut materials and the instructions we furnish make construction fast, simple and accurate.

See Specifications
Page 59



THE STATLER

The Statler is a substantial, comfortable summer home, and is shown here in three different plan arrangements and sizes. The Statler No. 1 is size 20' x 18' over-all having three bedrooms and combined dining room and kitchen. The Statler No. 2 is size 20' x 22' over-all having living room, two bedrooms and kitchen. The porch is 20' wide and 6' deep. This plan is one of our best sellers. The Statler No. 3 is size 18' x 24'. It is a popular type affording maximum room for its dimensions. The sills are 4' x 6' built-up. The floor joists are 2' x 6' on 24-inch centers. The rafters are 2' x 4' on 24-inch centers. The height of the interior partitions is 7'6". See specifications Page 59.

See Specifications
Page 59

Prices Given
On Enclosed
Price List



THE HUNTER'S LODGE

Freight Paid Price Price Given On Enclosed Price List

The Hunter's Lodge answers the demand for a low cost camp or "shack" in the woods. Two men can start work on the erection of the Hunter's Lodge in the morning and sleep in the completed building at night. It is a one room building and can be purchased in your choice of three sizes. The Hunter's Lodge No. 1 is 12' x 16' in size. The Hunter's Lodge No. 2 is 12' x 20' in size. No. 3, 16' x 20'. These can be built up across the rear or sides or you can use double decked steel bunks or cots. We use only the best materials in Aladdin homes and summer cottages and furnish these same high quality materials for all Aladdin buildings, regardless of their size or cost. Due to the fact that the heavy, close fitting siding described on Page 59 is furnished with the Hunter's Lodge, you will find the building easy to heat in the late fall months. The Hunter's Lodge contains a total of four 18" x 24" swinging casement windows, two being arranged in each side wall. A paneled door is furnished at the front. The specifications are listed on Page 59.



Prices Given On Enclosed Price List

ADDITIONAL MATERIALS FOR SUMMER COTTAGES AND GARAGES

Specifications listing the materials furnished with Aladdin Summer Cottages will be found on Page 59. You will note that in accordance with usual practice and customary summer cottage construction, we do not furnish any material for lining the inside of the outside walls nor do we include any inside trim, stain or varnish. Two coats of paint are of course furnished for the exterior. You can have any color desired. Front and rear outside doors are furnished but we do not include inside doors nor front or rear steps. Due to the fact that the height above ground varies so greatly in summer cottages, it is impractical for us to include steps in our prices. We therefore furnish materials from the sills up, only.

Screens: At the prices quoted for screens we can include them with any summer cottage shipment. The prices include galvanized wire screening for porch or porches together with the necessary materials to make the porch frames, high quality galvanized screen doors for front and rear, full length galvanized wire screens for all windows not opening on screened porches and necessary hardware for screen doors, window screens and porch screens.

and we therefore quote prices on making this change in our specifications. See price list.

Prices On Shingles For Summer Cottages Given On Enclosed Price List

As lumber prices go up, and they are going up every day, the Aladdin Read-Cut System becomes more important to you as a money saver. A saving of 18% on thirty-dollar lumber is \$5.40. On sixty-dollar lumber the saving is \$10.80.

On account of the low pitched porch roof on the Asbury, Bayview, Shasta, Genesee, Statler and Shoreview cottages, shingles are quoted on the main roof only, roofing remaining on the porch roofs.

Prices On Screens Given On Enclosed Price List

It is generally agreed that there will be a tremendous increase in the building of Summer Cottages. The forty-hour week affords plenty of spare time to enjoy the pleasures and benefits of Summer Cottage life.

Asphalt Strip Shingles: Almost all summer cottages and garages are built with slate-surfaced asphalt roll roofing for the roof covering. For this reason Aladdin Summer Cottages and Garages are priced with roll roofing. However, we occasionally receive a request to substitute slate-surfaced, asphalt strip shingles for the roll roofing

Prices On Shingles For Garages Given On Enclosed Price List

Asphalt strip shingles are not quoted for the roof of the La Salle garages for, due to their very low pitched roofs, roll roofing is the only practical roof covering. With the La Salle garages we furnish a special, extra heavy, deck roofing which cannot be improved upon.

Foundation Posts: Cedar posts can be furnished for Aladdin Summer Cottages at 80 cents each for 8-foot posts or 40 cents each for 4-foot posts. The length of posts necessary depends upon the height above ground the cottage will be built. If the lot slopes, it will probably be necessary to use some long posts. If you wish us to include posts with your cottage we will be glad to inform you of the number necessary.

Fourteen different designs of summer cottages are pictured in this catalog. Most of these cottages are offered in several plan arrangements, making a total of forty-three different sizes or plans for you to select from. In this large assortment of plans it is probable that you will find just exactly the room arrangement you desire. However, you will be interested in knowing that our summer cottage partitions can be moved about during construction, practically at will, making it easily possible for you to rearrange the plan or alter room sizes if you wish to do so. We can sell you extra windows, etc., to assist you in making your cottage just exactly as you want it. As an example of the changes possible, some of our customers have desired to place the outside entrance to the Hunter's Lodge in the long side of the building, facing it the wide way to the front. This change and many other similar changes can be handled without difficulty.

FREIGHT PAID ORDER BLANK

PLEASE USE THIS ORDER BLANK IN MAKING OUT YOUR ORDER

The ALADDIN Guaranty Satisfaction, or your money back, is the soundest guaranty ever written. When this guaranty is backed by a company whose assets run into the millions you are assured of **absolute safety in all your dealings**. Aladdin guarantees the quantity and quality of all materials and their safe arrival at destination. The Aladdin Company guarantees you satisfaction or your money back in every transaction with us.

The following order is placed under the absolute guarantee of complete satisfaction to the purchaser, which is printed above

The ALADDIN CO.:

Please ship _____ Plan No. _____
Give name of house, summer cottage or garage

described on page _____ of your catalog, price of which is \$ _____

Also include in my order the following:

_____ \$ _____
_____ \$ _____
_____ \$ _____
_____ \$ _____
_____ \$ _____
_____ \$ _____
_____ \$ _____

What kind of Foundation will you use? Solid Wall or Post _____

Color of Paint for Outside Walls _____

Color of Stain for Inside Finish _____

Shipping Instructions for My House

Ship to _____

Town _____ County _____ State _____

Ship on _____ R. R. _____
If no choice our Freight Dept. will select quickest route

Is there a Freight Agent there? _____

I would like my order shipped about _____

ORDERED BY _____

Street _____ Town _____

County _____ State _____

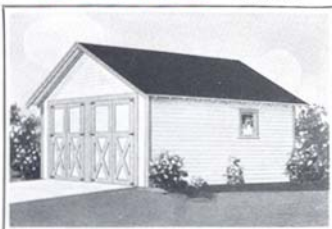
I enclose _____ for \$ _____

Check, Draft, Money Order

Remarks: _____

Aladdin garages are made of only the best materials and when completed are sure to please the most critical person. The lumber is entirely cut-to-fit, making erection a short and easy task. Detailed drawings show where each piece of lumber is to be placed and nailed. Aladdin offers the perfect system of buying and building garages. All freight charges paid by the Aladdin Company. Safe delivery and no shortages guaranteed.

Specifications: Materials of the same high quality as used in Aladdin houses. Sills 4" x 4", studding 2" x 4" on 24-inch centers. Clear and Knotless drop siding for side walls, see illustration of siding on page 59. 2" x 4" rafters on 24-inch centers, roof sheathing laid tight. Best quality green, slate-surfaced, roll roofing. Slate surfaced asphalt strip shingles can be had in place of roll roofing at prices quoted. See Price List. Swinging doors, each pair eight feet wide and seven and one-half feet high, except Ford No. 1 doors 7'4" wide 7'3" high, Ford No. 2, 3 and 4 doors 8' wide, 7'3" high. Garages shown with solid doors can be supplied with glass top doors at \$9.00 per pair additional. Windows furnished when shown in illustration are swinging casements. Hardware for doors and windows, nails and two coats of paint for exterior. Materials Read-Cut. Drawings and instructions for building. All garages furnished without floors as most owners prefer to build floors of cinders or concrete.



THE CADILLAC

- No. 1, 18 ft. wide, 16 ft. deep.
- No. 2, 18 ft. wide, 18 ft. deep.
- No. 3, 18 ft. wide, 20 ft. deep.
- No. 4, 20 ft. wide, 18 ft. deep.
- No. 5, 20 ft. wide, 20 ft. deep.

Prices Given
On Enclosed
Price List



THE HUDSON

- No. 1, 20 ft. wide, 18 ft. deep
- No. 2, 20 ft. wide, 20 ft. deep
- No. 3 (3 Car), 26 ft. wide, 18 ft. deep.
- No. 4 (3 Car), 26 ft. wide, 20 ft. deep.

Prices Given
On Enclosed
Price List



THE LASALLE

- No. 1, 18 ft. wide, 16 ft. deep
- No. 2, 18 ft. wide, 18 ft. deep
- No. 3, 18 ft. wide, 20 ft. deep
- No. 4 (3 Car), 26 ft. wide, 18 ft. deep.
- No. 5 (3 Car), 26 ft. wide, 20 ft. deep.

Prices Given
On Enclosed
Price List



THE STUDEBAKER

- No. 1, 12 ft. wide, 16 ft. deep.
- No. 2, 12 ft. wide, 18 ft. deep.
- No. 3, 12 ft. wide, 20 ft. deep.

Prices Given
On Enclosed
Price List



THE FORD

- No. 1, 8 ft. wide, 14 ft. deep.
- No. 2, 10 ft. wide, 16 ft. deep.
- No. 3, 10 ft. wide, 18 ft. deep.
- No. 4, 12 ft. wide, 18 ft. deep.

Prices Given
On Enclosed
Price List

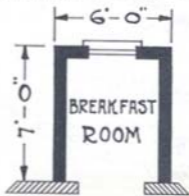
HOUSE	PAGE	HOUSE	PAGE	INDEX		HOUSE	PAGE	HOUSE	PAGE
Avalon	22	Capitol	37	House	PAGE	Madison	25	Plymouth	34
Belhaven	26	Colonial	17	House	45	Magnolia	13	Redwood	33
Beverly	18	Charleston	19	Firwood	45	Maples	41	St. Clair	42
Birchwood	40	Convertible	42	Gables	20	Maryland	11	Stratford	21
Brewster	28	Cottonwood	43	Garages	63	Newmarket	23	Summer Cottages	23-61
Browline	35	Cypress	16	Hamilton	39	Oakwood	15	Trailer	19-51
Cambridge	23	Elmwood	28	Hawthorne	9	Pershing	11	University	26
Cantebury	31	Fairfield	29	Larchwood	21	Virginia	11	Whitehall	20
Cape Cod	41	Ferndale	27			Poplar	12		22

SUGGESTIONS FOR ALADDIN INTERIORS

ALADDIN BREAKFAST ROOM ADDITION

The convenience and utility of the Breakfast Room is being increasingly recognized by modern housewives. This is true whether or not the home has a dining room. The Breakfast Room is used by the family for breakfast as well as the noon meal, and many families use it to the exclusion of the dining room, except when company is present. You will note from the floor plan that this addition is size 6 ft. by 7 ft.—ample for most families. The attractive doorway shown can be had, or changed to the conventional square shape.

The price for this addition, which is given in our price sheet, includes all materials as specified for our regular houses.



FLOOR PLAN FOR ADDITION



ALADDIN KITCHEN PLAN

A little planning on arrangement and color scheme makes possible a delightfully attractive kitchen for the housewife. The picture at the right shows a very simple and inexpensive arrangement and equipment, yet the results are surely appealing. Two regular Aladdin cabinets, such as are shown on page 48 of this catalog, have been efficiently arranged on each side of the window with sink in between. We will be glad to assist you with practical suggestions if you desire them.



AN ALADDIN BATHROOM

The colorful results shown in this beautiful Aladdin bathroom can easily be obtained by marking off keen cement to represent expensive tile and using lacquer or waterproof paint on the walls.

There are several kinds of wall boards marked like tile also obtainable inexpensively.

The floor tile effect is secured by selecting a harmoniously colored linoleum.

FREIGHT PAID PRICE LIST

FOR

Aladdin Houses

Summer Cottages and Garages

Because of advancing market prices on all building materials, prices are subject to change April 15th, July 15th, and September 15th.



Detailed Specifications for Any Home will be mailed on request
See Terms on Page Three

THE ALADDIN COMPANY

MANUFACTURERS OF ALADDIN READI-CUT HOUSES

Home Offices and Mills
BAY CITY, MICHIGAN

Branch Offices and Mills
PORTLAND, OREGON

1936

Freight Paid Price List on Aladdin Homes

HOUSES		Single Construction Freight Paid Price	Double Construction Freight Paid Price	Porch Freight Paid Price	Wood Lath Freight Paid Price	Rock-lath Freight Paid Price	Wall Board Freight Paid Price	Wood or Asphalt Strip Shingles instead of Roofing
Name of House	Page							
Avalon	22	\$2069	\$2248	included	\$95	\$197	\$284	included
Belhaven	36	766	841	included	34	68	102	35
Beverly	18	1498	1659	Rail inc.	62	123	176	included
Birchwood	40	774	852	73	40	80	117	38
Brewster	38							
No. 1	38	1028	1143	included	45	94	135	included
No. 2	38	1030	1145	included	46	96	137	included
Brookline	35							
No. 1	35	1218	1400	52	111	158	included
No. 2	35	1353	1557	61	128	183	included
Cambridge	23	1625	1810	77	160	229	included
Canterbury	31							
No. 1	31	1430	1569	Rail inc.	55	115	164	included
No. 2	31	1418	1550	Rail inc.	56	118	172	included
Cape Cod	44	1748	1907	included	83	171	244	included
Capitol	37	1790	1951	Porch 45	90	185	276	included
			Porte	Cochere 37				
Cedarwood	17							
Plans A-C	17	649	721	73	32	64	97	29
Plans D-E	17	659	731	73	32	64	97	29
Charleston	19	1821	1949	included	85	175	254	included
Convertible	42							
No. 1	42	383	430	17	34	53	17
No. 2	42	437	492	21	42	63	18
Cottonwood	43							
No. 1	43	386	428	56	17	35	51	18
Nos. 2-3	43	483	543	69	22	46	68	25
Cypress	16	498	567	60	26	52	78	26
Elmwood	28	718	789	54	37	75	110	34
Fairfield	29							
No. 1	29	1389	1524	included	52	109	155	included
No. 2	29	1455	1592	included	56	114	166	included
Ferndale	27							
No. 1	27	1175	1330	53	110	157	included
No. 2	27	1236	1398	54	112	160	included
Firwood	45	535	591	37	30	59	89	26
Gables	30							
No. 1	30	1021	1111	41	85	122	included
No. 2	30	1039	1129	41	85	122	included
Hamilton	39	1520	1547	67	136	194	included
Hawthorne	9							
Plans A-D-G	9	887	980	98	46	95	138	48
Plans C-F	9	923	1016	98	49	99	144	48

TERMS
PAGE
THREE

At These Prices We Guarantee to Deliver You

Single and Double Construction—In a single construction home the finish flooring is to be nailed directly to the floor joists and the bevel drop siding (shown on page 59) is to be nailed directly to the studding. With double construction we include sub-floor sheathing and building paper to use under the finish flooring and wall sheathing and building paper to use under the bevel siding or shingles on the outside walls. All other materials are exactly the same in either single or double construction.

Porches—Where possible, porches are priced separately so that you can purchase the home without the porch, or select a porch that is shown on some other home in the catalog. The porch price includes the complete materials,

except masonry materials.

Wood Lath—The price quoted includes the necessary wood lath and lath nails for all walls, partitions and ceilings, also plaster grounds around inside door openings and the baseboard.

Rocklath—United States Gypsum Rocklath is $\frac{3}{8}$ inches in thickness and is made in sheets 16 inches wide and 48 inches long. The Rocklath price for each home includes the necessary nails for applying it. Rocklath has reinforced folded edges for maximum strength and nail holding power and is fireproof. Plaster clings to Rocklath more tightly than to any other type of lath. The convenient size sheets makes it easy to apply and when using it for a plaster

Freight Paid Price List on Aladdin Homes

HOUSES		Single Construction Freight Paid Price	Double Construction Freight Paid Price	Porch Freight Paid Price	Wood Lath Freight Paid Price	Rock-lath Freight Paid Price	Wall Board Freight Paid Price	Wood or Asphalt Strip Shingles Instead of Roofing
Name of House	Page							
Larchwood	21							
Plan C	21	758	836	66	38	78	113	38
Plan D	21	795	877	66	41	84	123	40
Plan E	21	835	921	66	43	88	129	42
Madison	25							
Plan A	25	998	1110		42	86	126	included
Plan C	25	1098	1198		48	99	140	included
Plan D	25	1192	1292		52	109	155	included
Magnolia	13	910	1013	85	\$ 47	\$ 94	\$140	\$ 29
Maples	41							
18'x18'	41	394	434	19	19	39	58	18
22'x22'	41	519	579	19	23	48	70	25
26'x26'	41	637	724	19	31	61	91	35
Marshfield	14							
Plan A	14	1030	1135	included	43	88	129	52
Plan B	14	1181	1296	included	50	103	150	57
Maryland	43	949	1069	included	49	101	144	included
Nantucket	10							
No. 1	10	1223	1336	72	47	96	141	included
No. 2	10	1547	1675	72	67	144	210	included
Oakwood	15							
Plan A	15	563	617		30	58	88	28
Plan B	15	580	636		31	61	91	29
Plan C	15	611	663		32	65	95	31
Plan K	15	693	758		35	71	106	33
Pershing	11							
Nos. 1-2	11	812	889		39	80	116	42
Nos. 3-4	11	842	931		40	82	119	42
Plymouth	34							
No. 1	34	1233	1359	46	62	122	180	included
No. 2	34	1396	1549	46	71	144	209	included
Poplar	12							
Plans C-E	12	924	1017	46	46	95	139	48
Plans D-F	12	942	1035	46	46	95	139	48
Redwood	33	511	562		25	52	76	22
St. Clair	42	493	549	included	22	45	66	26
Stratford	24							
No. 1	24	1388	1527		64	136	200	included
No. 2	24	1597	1773		76	160	234	included
University	26							
No. 1	26	1355	1574		50	104	148	included
No. 2	26	1448	1682		54	112	160	included
Virginia	20	936	1038		44	89	129	38
Whitehall	32							
B-C-G	32	498	552		24	49	72	26
A-D-F	32	507	561		24	49	72	26

Material to Complete Your House as Specified

TERMS
PAGE
THREE

base, you are assured of the finest kind of a plaster job. Plaster grounds are included in the price quoted for Rocklath.

Wall Board—United States Gypsum Weatherwood Wall Board provides strength and high insulation value for your home. It is full 1/2 inch thick and is furnished 4 feet wide and in lengths of 8, 9, 10, 12 feet, to suit the particular home selected. Any kind of a decorative treatment can be used or it can be left in its attractive Cream color.

Roof Covering—Barrett's green, slate surfaced asphalt roof roofing is specified for many homes but if you wish shingles, we will furnish them at the separate prices quoted. If shingles for

the roof are included, we will furnish your choice of No. 1 Red Cedar or Barrett's Hexagonal Asphalt Strip Shingles. Nails, flashing, etc., are included in the price quoted for roof covering.

Freight Paid Prices—The freight paid prices quoted on this price list apply for shipment into the States of Michigan, Ohio, Pennsylvania, New York, Minnesota, Wisconsin, Iowa, Missouri, Illinois, Indiana, Kentucky, West Virginia, New Jersey, Connecticut, Massachusetts, New Hampshire, Vermont, Maine, Rhode Island, Maryland, Virginia, Tennessee, Delaware, Washington, Oregon, California, Montana, Idaho, Utah, Nevada, Wyoming, and Colorado.

Summer Cottage and Garage Prices

SUMMER COTTAGES

Name of Cottage	Page	Price of Cottage Freight Paid	Price of Screens Freight Paid	Wood or Asphalt Strip Shingles Instead of Roofing
Asbury	57			
Plan No. 1	57	\$225	\$19	\$ 9
Plan No. 2	57	268	19	14
Plan No. 3	57	288	19	17
Bar Harbor	54			
Plan No. 1	54	951	42	53
Plan No. 2	54	715	35	38
Bay View	55			
Plan No. 1	55	501	32	21
Plan No. 2	55	552	35	22
Plan No. 3	55	589	36	26
Genesee	56			
Plan No. 1	56	397	23	21
Plan No. 2	56	422	29	22
Plan No. 4	56	517	29	28
Lake Louise	58			
Plan No. 1	58	750	33	40
Plan No. 2	58	803	34	41
Long Beach	58			
Plan No. 1	58	585	27	32
Plan No. 2	58	688	30	40
Plan No. 3	58	617	31	33
Luna	60			
Plans No. 1-2	60	454	26	28
Plan No. 3	60	467	26	30
Plan No. 6	60	573	29	39
Ocean Park	53			
Plan No. 1	53	407	27	26
Plan No. 2	53	443	27	29
Plan No. 3	53	556	31	36
Plan No. 4	53	476	29	33
Plan No. 5	53	517	29	35
Seaford	57			
Plan No. 1	57	452	26	27
Plans No. 2-4	57	496	30	29
Plan No. 3	57	563	30	36
Plan No. 5	57	530	29	34
Shasta	53			
Plan No. 1	53	440	28	25
Plan No. 2	53	507	30	26
Plan No. 3	53	712	38	39
Shoreview	56			
Plan No. 1	56	298	20	15
Plan No. 2	56	434	23	26
Plan No. 3	56	479	27	28
Plan No. 4	56	379	23	22
Statler	60			
Plan No. 1	60	326	23	16
Plan No. 2	60	355	23	20
Plan No. 3	60	354	23	20
Willows	55	855	43	38

THE FREIGHT PAID PRICES QUOTED ON GARAGES APPLY ONLY WHEN PURCHASED FOR SHIPMENT WITH AN ALADDIN HOME.

GARAGES

Name of Garage	Price of Garage Freight Paid	Wood or Asphalt Strip Shingles Instead of Roofing
Cadillac		
No. 1	\$139	\$16
No. 2	147	18
No. 3	157	20
No. 4	158	20
No. 5	167	21
Ford		
No. 1	70	8
No. 2	85	12
No. 3	92	12
No. 4	104	13
Hudson		
No. 1	169	20
No. 2	179	21
No. 3	203	25
No. 4	220	27
La Salle		
No. 1	145	
No. 2	152	
No. 3	163	
No. 4	207	
No. 5	213	
Studebaker		
No. 1	104	12
No. 2	111	15
No. 3	120	15

HUNTERS' LODGE

Page 61	Freight Paid Price	Wood or Asphalt Strip Shingles
No. 1 Size 12x16	\$166	\$12
No. 2 Size 12x20	191	15
No. 3 Size 16x20	228	20

BREAKFAST ROOM ADDITION — Page 64

The Freight Paid Prices quoted on ADDITION apply only when purchased for shipment with a Home.

Addition, Size 6'x7', Single Construction	\$60
Addition, Size 6'x7', Double Construction	69
Wood Lath	2
Rocklath	7
Wall Board	9

PRICES SUBJECT TO CHANGE

We reserve the right to advance these prices on any of the following dates—April 15—July 15 or September 15.

ALADDIN TRAILER HOME

TWO BERTH MODEL

Price, Completely Equipped

F. O. B. Factory.....\$545

ALADDIN TRAILER HOME

FOUR BERTH MODEL

Price, Completely Equipped

F. O. B. Factory.....\$575