

THE CHIPPEWA MARCHING BAND

at Central Michigan University

Tuba

Audition Materials



“Play with the HEART of a true CHAMPION.”



SCHOOL OF
MUSIC

CENTRAL MICHIGAN UNIVERSITY

The Chippewa Marching Band

2024: Our 102nd Season
as the
"Spirit of the Stadium"



Greetings!

I'm excited to know of your interest in the 102nd Chippewa Marching Band! The attached materials will help you to prepare for your audition.

The enclosed technical and lyrical exercises are intended to let you demonstrate the best of your abilities. We also ask that you play at least one octave each of the "concert" B-flat, E-flat, and F major scales, and a chromatic scale.

Additionally, we ask that you perform one of the major scales while marking time. You may use any style that's familiar to you. Our style is fairly simple: Holding your instrument in a comfortable playing position, stand with your heels together, your toes comfortably apart, and your body aligned vertically from your ankles up through your knees, hips, abdominal core, and shoulders. Leaving your toes on the ground, mark time with your heels alternating from left to right, and play an octave of a concert F, B-Flat, or E-Flat scale, following the pattern below:



Mark time and play the scale of your choice once at a moderate tempo and again as quickly as is both comfortable and reasonable. As an example, 100 beats per minute and 132 beats per minute would provide a good contrast.

Please don't hesitate to contact me with any questions. Be sure to look through the general Audition information at music.cmich.edu/cmb to see how you can register for Orientation and register for your live audition or submit an audition video using YouTube.

I'm looking forward to seeing YOU at CMU!
Dr. James Batcheller, Director

Audition Music: Technical Exercise

The Girl I Left Behind Me

Tuba

The Chippewa Marching Band
Central Michigan University

Allegro (M.M. ♩ = c. 120)

The first staff of music is in bass clef, with a key signature of two flats (B-flat and E-flat) and a time signature of 2/4. It begins with a quarter rest, followed by a series of eighth and sixteenth notes. A dynamic marking of *f* (forte) is placed below the first measure. The staff concludes with a double bar line.

7

The second staff of music continues the piece from measure 7. It features a sequence of eighth and sixteenth notes, including a triplet of eighth notes in the fourth measure. The staff ends with a double bar line.

13

The third staff of music continues from measure 13. It contains eighth and sixteenth notes, with a triplet of eighth notes in the fourth measure. The piece concludes with a double bar line.

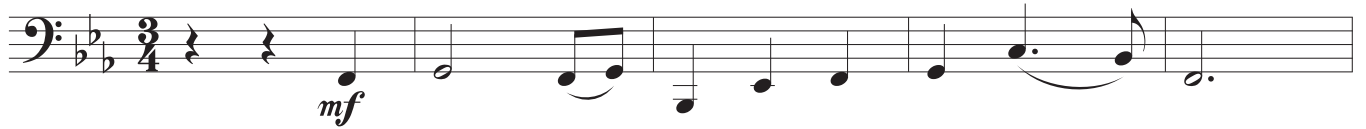
Audition Music: Lyrical Exercise

Tuba

If I Were a Blackbird

The Chippewa Marching Band
Central Michigan University

Moderato e cantabile



6



12

