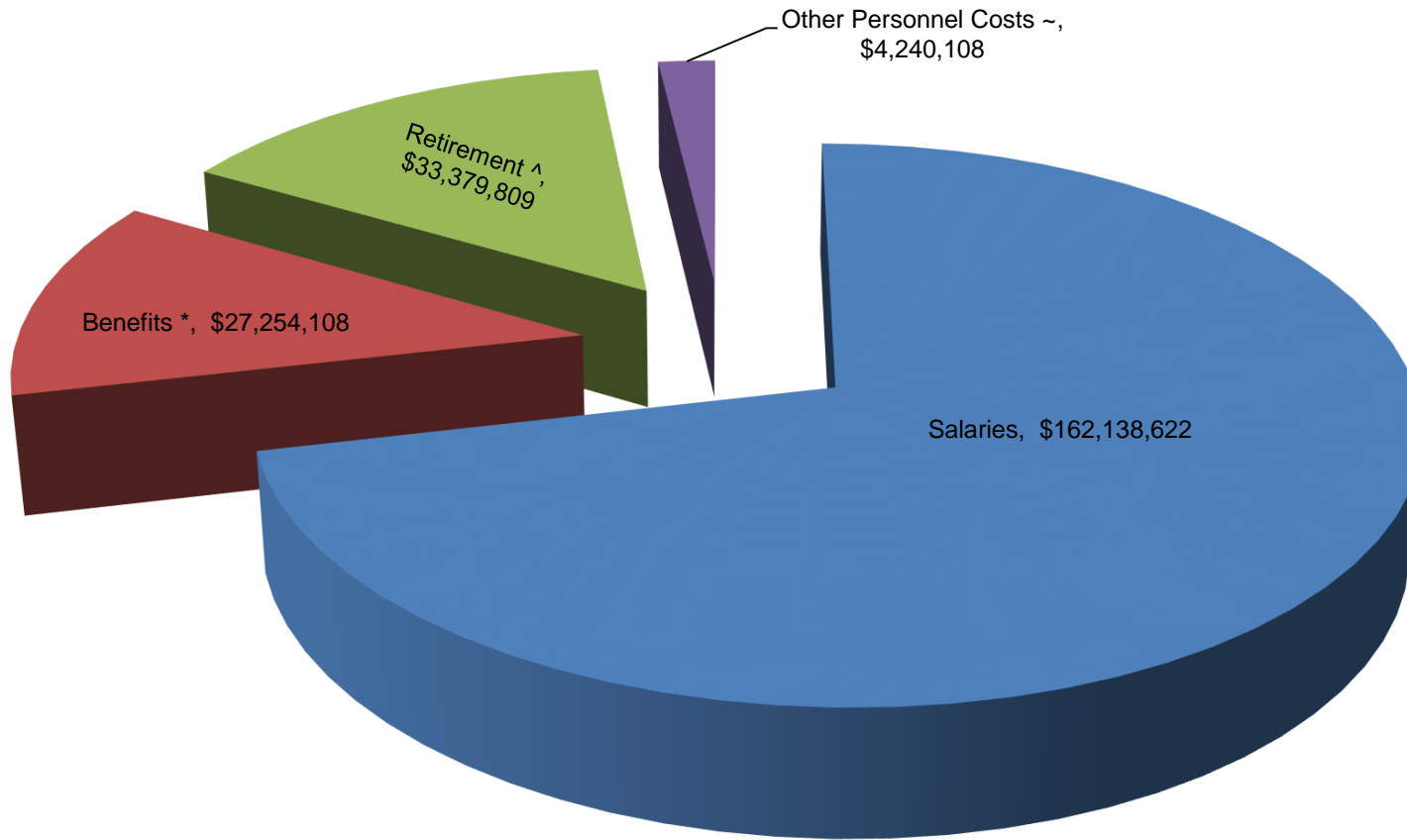


General Fund Personnel Expenditures
FY 2018-19



Source: Supplemental financial information section of the audited financial statements

* - includes health, vision, dental, life, disability, unemployment and workers compensation coverage

^ - includes retirement, social security and medicare contributions

~ - includes employee tuition benefit program

Note: Expenditures above exclude Non-Michigan general fund activity from CMU's Global Campus.